



Full wwPDB X-ray Structure Validation Report ⓘ

Apr 21, 2025 – 10:22 AM EDT

PDB ID : 7FOI / pdb_00007foi
Title : PanDDA analysis group deposition – Aar2/RNaseH in complex with fragment P08B06 from the F2X-Universal Library
Authors : Barthel, T.; Wollenhaupt, J.; Lima, G.M.A.; Wahl, M.C.; Weiss, M.S.
Deposited on : 2022-08-26
Resolution : 1.55 Å(reported)

This is a Full wwPDB X-ray Structure Validation Report for a publicly released PDB entry.

We welcome your comments at validation@mail.wwpdb.org

A user guide is available at

<https://www.wwpdb.org/validation/2017/XrayValidationReportHelp>

with specific help available everywhere you see the ⓘ symbol.

The types of validation reports are described at

<http://www.wwpdb.org/validation/2017/FAQs#types>.

The following versions of software and data (see [references ⓘ](#)) were used in the production of this report:

MolProbity : 4.02b-467
Mogul : 2022.3.0, CSD as543be (2022)
Xtriage (Phenix) : 2.0rc1
EDS : 3.0
Percentile statistics : 20231227.v01 (using entries in the PDB archive December 27th 2023)
CCP4 : 9.0.006 (Gargrove)
Density-Fitness : 1.0.12
Ideal geometry (proteins) : Engh & Huber (2001)
Ideal geometry (DNA, RNA) : Parkinson et al. (1996)
Validation Pipeline (wwPDB-VP) : 2.42

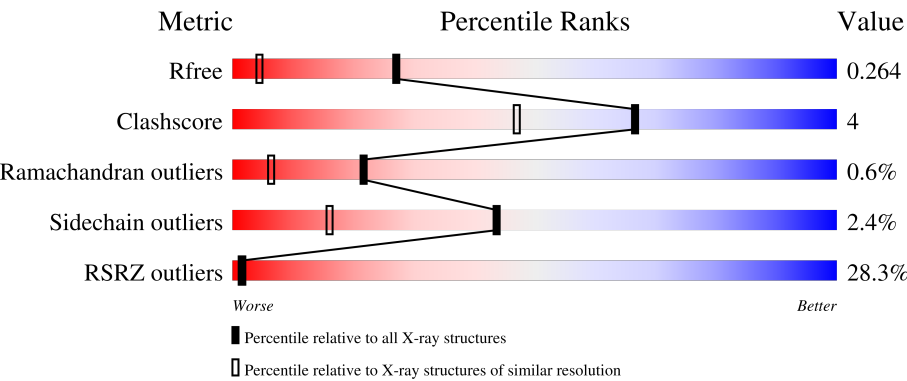
1 Overall quality at a glance i

The following experimental techniques were used to determine the structure:

X-RAY DIFFRACTION

The reported resolution of this entry is 1.55 Å.

Percentile scores (ranging between 0-100) for global validation metrics of the entry are shown in the following graphic. The table shows the number of entries on which the scores are based.



Metric	Whole archive (#Entries)	Similar resolution (#Entries, resolution range(Å))
R_{free}	164625	1935 (1.56-1.56)
Clashscore	180529	2073 (1.56-1.56)
Ramachandran outliers	177936	2037 (1.56-1.56)
Sidechain outliers	177891	2034 (1.56-1.56)
RSRZ outliers	164620	1935 (1.56-1.56)

The table below summarises the geometric issues observed across the polymeric chains and their fit to the electron density. The red, orange, yellow and green segments of the lower bar indicate the fraction of residues that contain outliers for ≥ 3 , 2, 1 and 0 types of geometric quality criteria respectively. A grey segment represents the fraction of residues that are not modelled. The numeric value for each fraction is indicated below the corresponding segment, with a dot representing fractions $\leq 5\%$. The upper red bar (where present) indicates the fraction of residues that have poor fit to the electron density. The numeric value is given above the bar.

Mol	Chain	Length	Quality of chain
1	A	258	<div><div>20%</div><div>84%</div><div>7%</div><div>8%</div></div>
2	B	308	<div><div>32%</div><div>85%</div><div>11%</div><div></div></div>

The following table lists non-polymeric compounds, carbohydrate monomers and non-standard residues in protein, DNA, RNA chains that are outliers for geometric or electron-density-fit criteria:

Mol	Type	Chain	Res	Chirality	Geometry	Clashes	Electron density
4	PGR	B	405	-	-	-	X

2 Entry composition

There are 5 unique types of molecules in this entry. The entry contains 9291 atoms, of which 4532 are hydrogens and 0 are deuteriums.

In the tables below, the ZeroOcc column contains the number of atoms modelled with zero occupancy, the AltConf column contains the number of residues with at least one atom in alternate conformation and the Trace column contains the number of residues modelled with at most 2 atoms.

- Molecule 1 is a protein called Pre-mRNA-splicing factor 8.

Mol	Chain	Residues	Atoms						ZeroOcc	AltConf	Trace
			Total	C	H	N	O	S			
1	A	237	4068	1287	2060	336	373	12	0	21	0

There are 3 discrepancies between the modelled and reference sequences:

Chain	Residue	Modelled	Actual	Comment	Reference
A	1833	GLY	-	expression tag	UNP P33334
A	1834	ALA	-	expression tag	UNP P33334
A	1835	MET	-	expression tag	UNP P33334

- Molecule 2 is a protein called A1 cistron-splicing factor AAR2.

Mol	Chain	Residues	Atoms						ZeroOcc	AltConf	Trace
			Total	C	H	N	O	S			
2	B	300	5044	1654	2464	421	485	20	11	17	0

There are 20 discrepancies between the modelled and reference sequences:

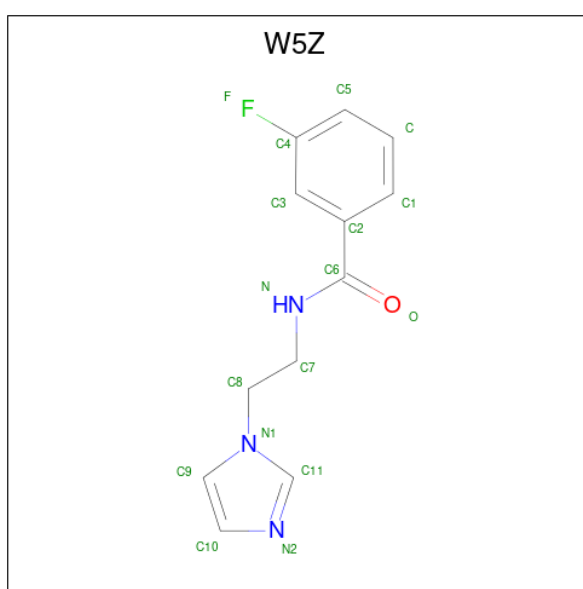
Chain	Residue	Modelled	Actual	Comment	Reference
B	-3	GLY	-	expression tag	UNP P32357
B	-2	ALA	-	expression tag	UNP P32357
B	-1	MET	-	expression tag	UNP P32357
B	0	ALA	-	expression tag	UNP P32357
B	166	SER	LEU	conflict	UNP P32357
B	167	SER	LYS	conflict	UNP P32357
B	?	-	LEU	deletion	UNP P32357
B	?	-	GLN	deletion	UNP P32357
B	?	-	LYS	deletion	UNP P32357
B	?	-	ALA	deletion	UNP P32357
B	?	-	GLY	deletion	UNP P32357
B	?	-	SER	deletion	UNP P32357
B	?	-	LYS	deletion	UNP P32357

Continued on next page...

Continued from previous page...

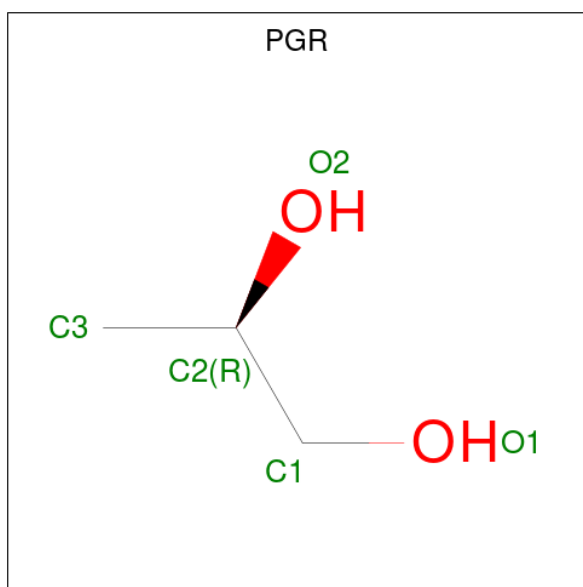
Chain	Residue	Modelled	Actual	Comment	Reference
B	?	-	MET	deletion	UNP P32357
B	?	-	GLU	deletion	UNP P32357
B	?	-	ALA	deletion	UNP P32357
B	?	-	LYS	deletion	UNP P32357
B	?	-	ASN	deletion	UNP P32357
B	?	-	GLU	deletion	UNP P32357
B	170	SER	ASP	conflict	UNP P32357

- Molecule 3 is 3-fluoro-N-[2-(1H-imidazol-1-yl)ethyl]benzamide (CCD ID: W5Z) (formula: $C_{12}H_{12}FN_3O$).



Mol	Chain	Residues	Atoms					ZeroOcc	AltConf
3	B	1	Total	C	F	N	O	0	0
			17	12	1	3	1		
3	B	1	Total	C	F	N	O	0	0
			17	12	1	3	1		
3	B	1	Total	C	F	N	O	0	0
			17	12	1	3	1		
3	B	1	Total	C	F	N	O	0	0
			17	12	1	3	1		

- Molecule 4 is R-1,2-PROPANEDIOL (CCD ID: PGR) (formula: $C_3H_8O_2$).



Mol	Chain	Residues	Atoms				ZeroOcc	AltConf
4	B	1	Total	C	H	O	0	0
			13	3	8	2		

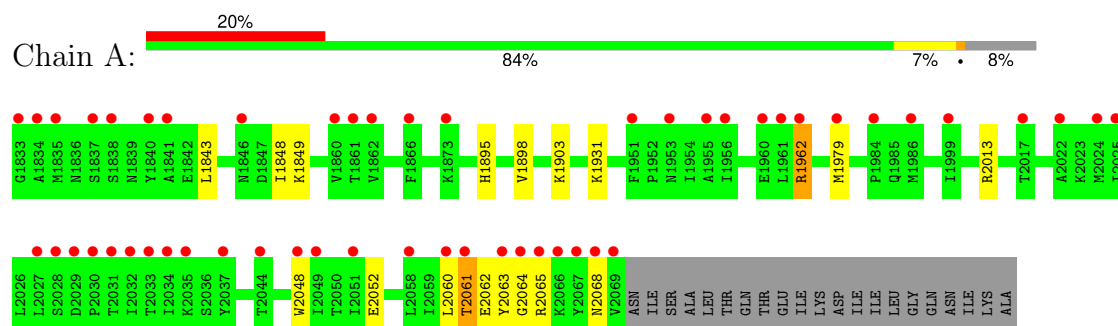
- Molecule 5 is water.

Mol	Chain	Residues	Atoms		ZeroOcc	AltConf
5	A	47	Total	O	0	0
			47	47		
5	B	51	Total	O	0	0
			51	51		

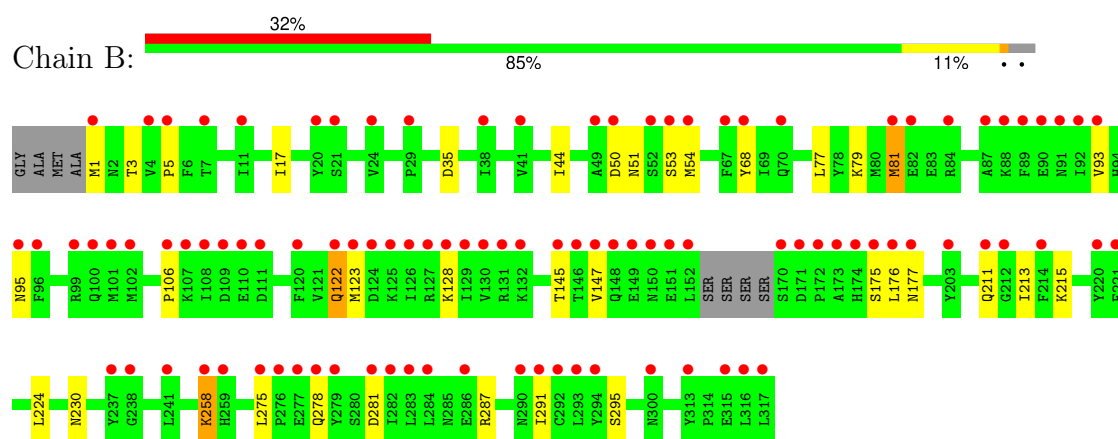
3 Residue-property plots

These plots are drawn for all protein, RNA, DNA and oligosaccharide chains in the entry. The first graphic for a chain summarises the proportions of the various outlier classes displayed in the second graphic. The second graphic shows the sequence view annotated by issues in geometry and electron density. Residues are color-coded according to the number of geometric quality criteria for which they contain at least one outlier: green = 0, yellow = 1, orange = 2 and red = 3 or more. A red dot above a residue indicates a poor fit to the electron density ($RSRZ > 2$). Stretches of 2 or more consecutive residues without any outlier are shown as a green connector. Residues present in the sample, but not in the model, are shown in grey.

• Molecule 1: Pre-mRNA-splicing factor 8



• Molecule 2: A1 cistron-splicing factor AAR2



4 Data and refinement statistics

Property	Value	Source
Space group	C 1 2 1	Depositor
Cell constants a, b, c, α , β , γ	88.76Å 82.15Å 93.69Å 90.00° 108.29° 90.00°	Depositor
Resolution (Å)	44.76 – 1.55 44.76 – 1.55	Depositor EDS
% Data completeness (in resolution range)	99.7 (44.76-1.55) 99.9 (44.76-1.55)	Depositor EDS
R_{merge}	(Not available)	Depositor
R_{sym}	(Not available)	Depositor
$\langle I/\sigma(I) \rangle$ ¹	0.97 (at 1.55Å)	Xtriage
Refinement program	PHENIX 1.17.1_3660	Depositor
R, R_{free}	0.211 , 0.249 0.247 , 0.264	Depositor DCC
R_{free} test set	2096 reflections (2.27%)	wwPDB-VP
Wilson B-factor (Å ²)	39.5	Xtriage
Anisotropy	0.363	Xtriage
Bulk solvent k_{sol} (e/Å ³), B_{sol} (Å ²)	0.41 , 42.8	EDS
L-test for twinning ²	$\langle L \rangle = 0.51$, $\langle L^2 \rangle = 0.34$	Xtriage
Estimated twinning fraction	No twinning to report.	Xtriage
F_o, F_c correlation	0.96	EDS
Total number of atoms	9291	wwPDB-VP
Average B, all atoms (Å ²)	58.0	wwPDB-VP

Xtriage's analysis on translational NCS is as follows: *The largest off-origin peak in the Patterson function is 5.87% of the height of the origin peak. No significant pseudotranslation is detected.*

¹Intensities estimated from amplitudes.

²Theoretical values of $\langle |L| \rangle$, $\langle L^2 \rangle$ for acentric reflections are 0.5, 0.333 respectively for untwinned datasets, and 0.375, 0.2 for perfectly twinned datasets.

5 Model quality

5.1 Standard geometry

Bond lengths and bond angles in the following residue types are not validated in this section: W5Z, PGR

The Z score for a bond length (or angle) is the number of standard deviations the observed value is removed from the expected value. A bond length (or angle) with $|Z| > 5$ is considered an outlier worth inspection. RMSZ is the root-mean-square of all Z scores of the bond lengths (or angles).

Mol	Chain	Bond lengths		Bond angles	
		RMSZ	$\# Z > 5$	RMSZ	$\# Z > 5$
1	A	0.52	0/2149	0.62	0/2911
2	B	0.70	5/2739 (0.2%)	0.85	3/3699 (0.1%)
All	All	0.63	5/4888 (0.1%)	0.76	3/6610 (0.0%)

Chiral center outliers are detected by calculating the chiral volume of a chiral center and verifying if the center is modelled as a planar moiety or with the opposite hand. A planarity outlier is detected by checking planarity of atoms in a peptide group, atoms in a mainchain group or atoms of a sidechain that are expected to be planar.

Mol	Chain	#Chirality outliers	#Planarity outliers
2	B	0	6

All (5) bond length outliers are listed below:

Mol	Chain	Res	Type	Atoms	Z	Observed(Å)	Ideal(Å)
2	B	5	PRO	N-CA	11.78	1.67	1.47
2	B	123[A]	MET	N-CA	5.41	1.57	1.46
2	B	123[B]	MET	N-CA	5.41	1.57	1.46
2	B	230[A]	ASN	C-O	5.32	1.33	1.23
2	B	230[B]	ASN	C-O	5.32	1.33	1.23

All (3) bond angle outliers are listed below:

Mol	Chain	Res	Type	Atoms	Z	Observed(°)	Ideal(°)
2	B	230[A]	ASN	CA-C-O	5.91	132.50	120.10
2	B	230[B]	ASN	CA-C-O	5.91	132.50	120.10
2	B	5	PRO	CA-N-CD	-5.05	104.42	111.50

There are no chirality outliers.

All (6) planarity outliers are listed below:

Mol	Chain	Res	Type	Group
2	B	122[A]	GLN	Mainchain
2	B	122[B]	GLN	Mainchain
2	B	176	LEU	Mainchain
2	B	211[A]	GLN	Mainchain
2	B	211[B]	GLN	Mainchain

5.2 Too-close contacts

In the following table, the Non-H and H(model) columns list the number of non-hydrogen atoms and hydrogen atoms in the chain respectively. The H(added) column lists the number of hydrogen atoms added and optimized by MolProbity. The Clashes column lists the number of clashes within the asymmetric unit, whereas Symm-Clashes lists symmetry-related clashes.

Mol	Chain	Non-H	H(model)	H(added)	Clashes	Symm-Clashes
1	A	2008	2060	1974	12	0
2	B	2580	2464	2398	19	0
3	B	68	0	0	3	0
4	B	5	8	8	0	0
5	A	47	0	0	2	0
5	B	51	0	0	2	0
All	All	4759	4532	4380	33	0

The all-atom clashscore is defined as the number of clashes found per 1000 atoms (including hydrogen atoms). The all-atom clashscore for this structure is 4.

All (33) close contacts within the same asymmetric unit are listed below, sorted by their clash magnitude.

Atom-1	Atom-2	Interatomic distance (Å)	Clash overlap (Å)
2:B:147:VAL:CG2	2:B:177[A]:ASN:OD1	1.91	1.18
2:B:147:VAL:HG21	2:B:177[A]:ASN:OD1	1.45	1.12
1:A:2061:THR:O	1:A:2064:GLY:N	2.17	0.77
2:B:147:VAL:HG21	2:B:177[B]:ASN:OD1	1.84	0.76
1:A:2063:TYR:O	5:A:2101:HOH:O	2.05	0.74
2:B:147:VAL:HG23	2:B:177[A]:ASN:OD1	1.89	0.69
3:B:401:W5Z:C3	3:B:401:W5Z:C8	2.79	0.60
2:B:1:MET:HB3	2:B:35:ASP:HA	1.84	0.60
1:A:1962:ARG:O	1:A:2013:ARG:NH1	2.37	0.58
2:B:258:LYS:HD2	2:B:258:LYS:H	1.71	0.55
3:B:401:W5Z:C3	3:B:401:W5Z:C7	2.85	0.55
1:A:2062:GLU:OE1	1:A:2065:ARG:NH1	2.43	0.52
2:B:77:LEU:HD21	2:B:79:LYS:HE3	1.93	0.51

Continued on next page...

Continued from previous page...

Atom-1	Atom-2	Interatomic distance (Å)	Clash overlap (Å)
1:A:1895:HIS:O	1:A:1898[A]:VAL:HG22	2.12	0.50
1:A:2064:GLY:HA2	5:A:2101:HOH:O	2.11	0.49
2:B:275:LEU:HB3	5:B:504:HOH:O	2.12	0.48
2:B:17:ILE:HD13	2:B:44[B]:ILE:CG1	2.44	0.47
1:A:1848:ILE:H	1:A:1931[A]:LYS:HZ2	1.61	0.46
2:B:287:ARG:O	2:B:291:ILE:HD13	2.15	0.46
2:B:122[A]:GLN:HA	2:B:122[A]:GLN:OE1	2.16	0.46
1:A:2060:LEU:O	1:A:2063:TYR:HB3	2.15	0.46
2:B:68:TYR:CZ	2:B:81:MET:HG2	2.50	0.46
2:B:17:ILE:HD13	2:B:44[B]:ILE:HG12	1.98	0.45
2:B:50:ASP:OD1	2:B:51:ASN:N	2.51	0.44
1:A:2064:GLY:O	1:A:2068:ASN:N	2.49	0.43
2:B:3:THR:HG21	2:B:93:VAL:HG13	2.00	0.43
2:B:224:LEU:C	2:B:224:LEU:HD23	2.40	0.42
1:A:1843:LEU:HA	1:A:1849:LYS:HD2	2.02	0.42
2:B:53:SER:O	2:B:54[A]:MET:HB3	2.20	0.41
2:B:278:GLN:HG2	5:B:515:HOH:O	2.21	0.41
2:B:68:TYR:CD2	3:B:401:W5Z:C3	3.03	0.41
1:A:2048:TRP:O	1:A:2052:GLU:HG3	2.22	0.40

There are no symmetry-related clashes.

5.3 Torsion angles [i](#)

5.3.1 Protein backbone [i](#)

In the following table, the Percentiles column shows the percent Ramachandran outliers of the chain as a percentile score with respect to all X-ray entries followed by that with respect to entries of similar resolution.

The Analysed column shows the number of residues for which the backbone conformation was analysed, and the total number of residues.

Mol	Chain	Analysed	Favoured	Allowed	Outliers	Percentiles	
1	A	258/258 (100%)	247 (96%)	10 (4%)	1 (0%)	30	13
2	B	315/308 (102%)	303 (96%)	10 (3%)	2 (1%)	22	6
All	All	573/566 (101%)	550 (96%)	20 (4%)	3 (0%)	22	8

All (3) Ramachandran outliers are listed below:

Mol	Chain	Res	Type
2	B	215	LYS
1	A	2061	THR
2	B	106	PRO

5.3.2 Protein sidechains ⓘ

In the following table, the Percentiles column shows the percent sidechain outliers of the chain as a percentile score with respect to all X-ray entries followed by that with respect to entries of similar resolution.

The Analysed column shows the number of residues for which the sidechain conformation was analysed, and the total number of residues.

Mol	Chain	Analysed	Rotameric	Outliers	Percentiles	
1	A	237/233 (102%)	232 (98%)	5 (2%)	48	20
2	B	294/284 (104%)	285 (97%)	9 (3%)	35	9
All	All	531/517 (103%)	517 (97%)	14 (3%)	44	13

All (14) residues with a non-rotameric sidechain are listed below:

Mol	Chain	Res	Type
1	A	1903	LYS
1	A	1962	ARG
1	A	1979[A]	MET
1	A	1979[B]	MET
1	A	1979[C]	MET
2	B	81	MET
2	B	95	ASN
2	B	128	LYS
2	B	145	THR
2	B	175	SER
2	B	213	ILE
2	B	258	LYS
2	B	281	ASP
2	B	295	SER

Sometimes sidechains can be flipped to improve hydrogen bonding and reduce clashes. All (2) such sidechains are listed below:

Mol	Chain	Res	Type
2	B	95	ASN
2	B	174	HIS

5.3.3 RNA ⓘ

There are no RNA molecules in this entry.

5.4 Non-standard residues in protein, DNA, RNA chains ⓘ

There are no non-standard protein/DNA/RNA residues in this entry.

5.5 Carbohydrates ⓘ

There are no oligosaccharides in this entry.

5.6 Ligand geometry ⓘ

5 ligands are modelled in this entry.

In the following table, the Counts columns list the number of bonds (or angles) for which Mogul statistics could be retrieved, the number of bonds (or angles) that are observed in the model and the number of bonds (or angles) that are defined in the Chemical Component Dictionary. The Link column lists molecule types, if any, to which the group is linked. The Z score for a bond length (or angle) is the number of standard deviations the observed value is removed from the expected value. A bond length (or angle) with $|Z| > 2$ is considered an outlier worth inspection. RMSZ is the root-mean-square of all Z scores of the bond lengths (or angles).

Mol	Type	Chain	Res	Link	Bond lengths			Bond angles		
					Counts	RMSZ	# $ Z > 2$	Counts	RMSZ	# $ Z > 2$
3	W5Z	B	403	-	17,18,18	1.47	1 (5%)	21,23,23	1.16	2 (9%)
4	PGR	B	405	-	4,4,4	0.54	0	4,4,4	0.79	0
3	W5Z	B	404	-	17,18,18	1.15	1 (5%)	21,23,23	0.76	0
3	W5Z	B	402	-	17,18,18	2.48	8 (47%)	21,23,23	1.75	6 (28%)
3	W5Z	B	401	-	17,18,18	1.96	4 (23%)	21,23,23	2.01	5 (23%)

In the following table, the Chirals column lists the number of chiral outliers, the number of chiral centers analysed, the number of these observed in the model and the number defined in the Chemical Component Dictionary. Similar counts are reported in the Torsion and Rings columns. '-' means no outliers of that kind were identified.

Mol	Type	Chain	Res	Link	Chirals	Torsions	Rings
3	W5Z	B	403	-	-	4/10/10/10	0/2/2/2
4	PGR	B	405	-	-	1/2/2/2	-
3	W5Z	B	404	-	-	0/10/10/10	0/2/2/2
3	W5Z	B	402	-	-	3/10/10/10	0/2/2/2

Continued on next page...

Continued from previous page...

Mol	Type	Chain	Res	Link	Chirals	Torsions	Rings
3	W5Z	B	401	-	-	4/10/10/10	0/2/2/2

All (14) bond length outliers are listed below:

Mol	Chain	Res	Type	Atoms	Z	Observed(Å)	Ideal(Å)
3	B	401	W5Z	C8-N1	-5.62	1.35	1.49
3	B	402	W5Z	C1-C2	-5.54	1.31	1.39
3	B	402	W5Z	C7-N	-4.79	1.35	1.46
3	B	402	W5Z	C3-C2	-3.46	1.34	1.39
3	B	401	W5Z	C3-C2	-3.20	1.34	1.39
3	B	403	W5Z	F-C4	-3.20	1.28	1.36
3	B	404	W5Z	F-C4	-3.10	1.28	1.36
3	B	401	W5Z	C6-N	2.81	1.40	1.33
3	B	402	W5Z	C3-C4	-2.80	1.33	1.37
3	B	401	W5Z	F-C4	-2.75	1.29	1.36
3	B	402	W5Z	C2-C6	-2.39	1.45	1.50
3	B	402	W5Z	C-C5	-2.36	1.34	1.38
3	B	402	W5Z	C5-C4	-2.33	1.32	1.37
3	B	402	W5Z	C-C1	-2.05	1.35	1.38

All (13) bond angle outliers are listed below:

Mol	Chain	Res	Type	Atoms	Z	Observed(°)	Ideal(°)
3	B	401	W5Z	C7-C8-N1	6.91	122.22	110.92
3	B	402	W5Z	C8-C7-N	-4.29	99.80	112.36
3	B	403	W5Z	C7-C8-N1	-3.13	105.79	110.92
3	B	402	W5Z	C-C1-C2	-3.08	117.34	120.36
3	B	401	W5Z	C7-N-C6	3.02	128.94	122.11
3	B	401	W5Z	C2-C3-C4	2.67	121.23	118.48
3	B	403	W5Z	C1-C2-C3	2.64	122.30	119.25
3	B	402	W5Z	C1-C2-C3	2.59	122.24	119.25
3	B	401	W5Z	O-C6-N	-2.53	117.66	122.59
3	B	402	W5Z	C5-C4-C3	-2.47	119.98	123.23
3	B	402	W5Z	C9-C10-N2	2.43	111.83	107.57
3	B	401	W5Z	C2-C6-N	2.39	122.08	117.12
3	B	402	W5Z	C7-C8-N1	2.17	114.46	110.92

There are no chirality outliers.

All (12) torsion outliers are listed below:

Mol	Chain	Res	Type	Atoms
3	B	401	W5Z	N-C7-C8-N1
3	B	402	W5Z	N-C7-C8-N1
3	B	401	W5Z	C2-C6-N-C7
3	B	401	W5Z	O-C6-N-C7
3	B	403	W5Z	C3-C2-C6-N
3	B	403	W5Z	C3-C2-C6-O
3	B	403	W5Z	C1-C2-C6-N
3	B	403	W5Z	C1-C2-C6-O
3	B	402	W5Z	C7-C8-N1-C9
4	B	405	PGR	O1-C1-C2-O2
3	B	402	W5Z	C7-C8-N1-C11
3	B	401	W5Z	C8-C7-N-C6

There are no ring outliers.

1 monomer is involved in 3 short contacts:

Mol	Chain	Res	Type	Clashes	Symm-Clashes
3	B	401	W5Z	3	0

5.7 Other polymers [i](#)

There are no such residues in this entry.

5.8 Polymer linkage issues [i](#)

There are no chain breaks in this entry.

6 Fit of model and data

6.1 Protein, DNA and RNA chains

In the following table, the column labelled ‘#RSRZ > 2’ contains the number (and percentage) of RSRZ outliers, followed by percent RSRZ outliers for the chain as percentile scores relative to all X-ray entries and entries of similar resolution. The OWAB column contains the minimum, median, 95th percentile and maximum values of the occupancy-weighted average B-factor per residue. The column labelled ‘Q < 0.9’ lists the number of (and percentage) of residues with an average occupancy less than 0.9.

Mol	Chain	Analysed	<RSRZ>	#RSRZ>2	OWAB(Å ²)	Q<0.9
1	A	237/258 (91%)	1.54	52 (21%) 3 3	18, 52, 94, 128	12 (5%)
2	B	300/308 (97%)	1.79	100 (33%) 1 1	18, 54, 95, 147	9 (3%)
All	All	537/566 (94%)	1.68	152 (28%) 1 1	18, 53, 94, 147	21 (3%)

All (152) RSRZ outliers are listed below:

Mol	Chain	Res	Type	RSRZ
1	A	1979[A]	MET	10.9
2	B	129	ILE	10.5
1	A	2069	VAL	9.9
2	B	152	LEU	9.4
1	A	2060	LEU	8.3
2	B	130	VAL	6.5
1	A	2061	THR	6.5
2	B	54[A]	MET	6.3
2	B	316	LEU	6.0
2	B	147	VAL	5.7
1	A	2067	TYR	5.6
2	B	128	LYS	5.5
1	A	1833	GLY	5.2
1	A	2068	ASN	5.1
2	B	174	HIS	4.9
2	B	203[A]	TYR	4.8
2	B	317	LEU	4.8
2	B	282	ILE	4.7
2	B	172	PRO	4.7
2	B	170	SER	4.6
1	A	1866	PHE	4.6
2	B	279	TYR	4.5
2	B	122[A]	GLN	4.5
2	B	177[A]	ASN	4.5

Continued on next page...

Continued from previous page...

Mol	Chain	Res	Type	RSRZ
2	B	126	ILE	4.4
1	A	2025	ILE	4.4
2	B	101	MET	4.4
1	A	2017[A]	THR	4.3
2	B	7	THR	4.2
2	B	150	ASN	4.2
2	B	149	GLU	4.2
1	A	2064	GLY	4.1
1	A	2049	ILE	4.1
2	B	96	PHE	4.1
2	B	131	ARG	4.1
1	A	2030	PRO	4.0
2	B	151	GLU	4.0
2	B	173	ALA	3.9
1	A	1862	VAL	3.9
2	B	49	ALA	3.9
2	B	124	ASP	3.8
1	A	2063	TYR	3.8
2	B	292	CYS	3.8
2	B	220	TYR	3.7
2	B	120	PHE	3.7
2	B	95	ASN	3.6
2	B	41[A]	VAL	3.6
1	A	2066	LYS	3.6
2	B	84	ARG	3.6
2	B	92	ILE	3.5
2	B	291	ILE	3.4
1	A	2065	ARG	3.4
1	A	1841	ALA	3.4
2	B	171	ASP	3.4
1	A	1840	TYR	3.4
2	B	110	GLU	3.4
1	A	1834	ALA	3.4
2	B	108	ILE	3.4
1	A	2058	LEU	3.3
2	B	123[A]	MET	3.3
2	B	125	LYS	3.3
1	A	1999	ILE	3.3
1	A	2051	ILE	3.3
2	B	237	TYR	3.3
2	B	93	VAL	3.2
2	B	214	PHE	3.2

Continued on next page...

Continued from previous page...

Mol	Chain	Res	Type	RSRZ
1	A	2027	LEU	3.2
1	A	1986	MET	3.2
1	A	2032	ILE	3.2
2	B	20	TYR	3.1
2	B	148	GLN	3.1
1	A	1860	VAL	3.1
2	B	127	ARG	3.1
2	B	87	ALA	3.1
2	B	275	LEU	3.1
2	B	145	THR	3.1
1	A	2028	SER	3.0
1	A	1961[A]	LEU	3.0
2	B	99	ARG	3.0
2	B	89	PHE	3.0
1	A	1953	ASN	2.9
2	B	29	PRO	2.9
1	A	2035	LYS	2.9
2	B	294	TYR	2.9
2	B	146	THR	2.9
2	B	88	LYS	2.8
2	B	1	MET	2.8
2	B	258	LYS	2.8
2	B	11	ILE	2.8
1	A	1960[A]	GLU	2.7
2	B	106	PRO	2.7
2	B	313	TYR	2.7
1	A	1837	SER	2.7
2	B	176	LEU	2.7
1	A	2044	THR	2.7
2	B	67	PHE	2.7
2	B	277	GLU	2.6
1	A	1962	ARG	2.6
1	A	2037	TYR	2.6
2	B	82	GLU	2.6
2	B	283	LEU	2.5
2	B	50	ASP	2.5
2	B	52	SER	2.5
1	A	2034	ILE	2.5
1	A	2031	THR	2.5
2	B	290	ASN	2.5
2	B	68	TYR	2.4
2	B	102	MET	2.4

Continued on next page...

Continued from previous page...

Mol	Chain	Res	Type	RSRZ
2	B	211[A]	GLN	2.4
2	B	221	PHE	2.4
1	A	1861	THR	2.4
1	A	1873	LYS	2.4
2	B	109	ASP	2.4
2	B	238	GLY	2.3
1	A	1835	MET	2.3
2	B	241	LEU	2.3
1	A	1984	PRO	2.3
1	A	1951	PHE	2.3
1	A	2033	THR	2.3
2	B	284	LEU	2.3
2	B	5	PRO	2.3
2	B	175	SER	2.3
2	B	70	GLN	2.2
2	B	53	SER	2.2
2	B	132	LYS	2.2
2	B	111	ASP	2.2
1	A	2022	ALA	2.2
2	B	100	GLN	2.2
2	B	212[A]	GLY	2.2
2	B	38	ILE	2.2
2	B	286	GLU	2.1
2	B	278	GLN	2.1
2	B	276	PRO	2.1
1	A	1955	ALA	2.1
1	A	2048	TRP	2.1
1	A	1838	SER	2.1
1	A	2029	ASP	2.1
2	B	81	MET	2.1
1	A	1956	ILE	2.1
1	A	1846	ASN	2.1
2	B	91	ASN	2.1
2	B	281	ASP	2.1
1	A	2024[A]	MET	2.1
2	B	300	ASN	2.1
2	B	293	LEU	2.1
2	B	21	SER	2.1
2	B	315	GLU	2.1
2	B	107	LYS	2.0
2	B	24	VAL	2.0
2	B	90	GLU	2.0

Continued on next page...

Continued from previous page...

Mol	Chain	Res	Type	RSRZ
2	B	259	HIS	2.0
2	B	4	VAL	2.0

6.2 Non-standard residues in protein, DNA, RNA chains [i](#)

There are no non-standard protein/DNA/RNA residues in this entry.

6.3 Carbohydrates [i](#)

There are no monosaccharides in this entry.

6.4 Ligands [i](#)

In the following table, the Atoms column lists the number of modelled atoms in the group and the number defined in the chemical component dictionary. The B-factors column lists the minimum, median, 95th percentile and maximum values of B factors of atoms in the group. The column labelled 'Q < 0.9' lists the number of atoms with occupancy less than 0.9.

Mol	Type	Chain	Res	Atoms	RSCC	RSR	B-factors(\AA^2)	Q<0.9
3	W5Z	B	403	17/17	0.54	0.26	20,20,20,20	17
3	W5Z	B	401	17/17	0.56	0.28	20,20,20,20	17
4	PGR	B	405	5/5	0.56	0.44	20,20,20,20	0
3	W5Z	B	404	17/17	0.57	0.33	20,20,20,20	17
3	W5Z	B	402	17/17	0.62	0.23	20,20,20,20	17

6.5 Other polymers [i](#)

There are no such residues in this entry.