



Full wwPDB X-ray Structure Validation Report ⓘ

Apr 21, 2025 – 01:13 PM EDT

PDB ID : 7FLM / pdb_00007flm
Title : PanDDA analysis group deposition – Aar2/RNaseH in complex with fragment P05F01 from the F2X-Universal Library
Authors : Barthel, T.; Wollenhaupt, J.; Lima, G.M.A.; Wahl, M.C.; Weiss, M.S.
Deposited on : 2022-08-26
Resolution : 1.55 Å(reported)

This is a Full wwPDB X-ray Structure Validation Report for a publicly released PDB entry.

We welcome your comments at validation@mail.wwpdb.org

A user guide is available at

<https://www.wwpdb.org/validation/2017/XrayValidationReportHelp>

with specific help available everywhere you see the ⓘ symbol.

The types of validation reports are described at

<http://www.wwpdb.org/validation/2017/FAQs#types>.

The following versions of software and data (see [references ⓘ](#)) were used in the production of this report:

MolProbity : 4.02b-467
Mogul : 2022.3.0, CSD as543be (2022)
Xtriage (Phenix) : 2.0rc1
EDS : 3.0
Percentile statistics : 20231227.v01 (using entries in the PDB archive December 27th 2023)
CCP4 : 9.0.006 (Gargrove)
Density-Fitness : 1.0.12
Ideal geometry (proteins) : Engh & Huber (2001)
Ideal geometry (DNA, RNA) : Parkinson et al. (1996)
Validation Pipeline (wwPDB-VP) : 2.42

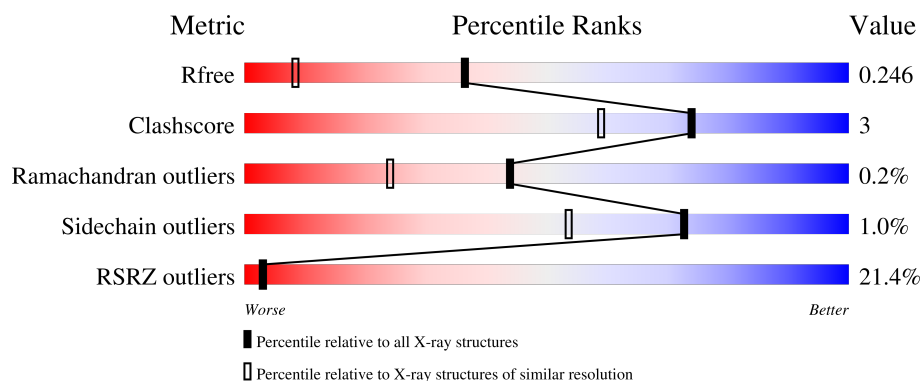
1 Overall quality at a glance

The following experimental techniques were used to determine the structure:

X-RAY DIFFRACTION

The reported resolution of this entry is 1.55 Å.

Percentile scores (ranging between 0-100) for global validation metrics of the entry are shown in the following graphic. The table shows the number of entries on which the scores are based.



Metric	Whole archive (#Entries)	Similar resolution (#Entries, resolution range(Å))
R_{free}	164625	1935 (1.56-1.56)
Clashscore	180529	2073 (1.56-1.56)
Ramachandran outliers	177936	2037 (1.56-1.56)
Sidechain outliers	177891	2034 (1.56-1.56)
RSRZ outliers	164620	1935 (1.56-1.56)

The table below summarises the geometric issues observed across the polymeric chains and their fit to the electron density. The red, orange, yellow and green segments of the lower bar indicate the fraction of residues that contain outliers for ≥ 3 , 2, 1 and 0 types of geometric quality criteria respectively. A grey segment represents the fraction of residues that are not modelled. The numeric value for each fraction is indicated below the corresponding segment, with a dot representing fractions $\leq 5\%$. The upper red bar (where present) indicates the fraction of residues that have poor fit to the electron density. The numeric value is given above the bar.

Mol	Chain	Length	Quality of chain
1	A	258	<div> <div>24%</div> <div>82%</div> <div>9%</div> <div>8%</div> </div>
2	B	308	<div> <div>18%</div> <div>90%</div> <div>7%</div> <div></div> </div>

The following table lists non-polymeric compounds, carbohydrate monomers and non-standard residues in protein, DNA, RNA chains that are outliers for geometric or electron-density-fit criteria:

Mol	Type	Chain	Res	Chirality	Geometry	Clashes	Electron density
3	VO5	A	2102	-	X	-	-

2 Entry composition

There are 4 unique types of molecules in this entry. The entry contains 9226 atoms, of which 4524 are hydrogens and 0 are deuteriums.

In the tables below, the ZeroOcc column contains the number of atoms modelled with zero occupancy, the AltConf column contains the number of residues with at least one atom in alternate conformation and the Trace column contains the number of residues modelled with at most 2 atoms.

- Molecule 1 is a protein called Pre-mRNA-splicing factor 8.

Mol	Chain	Residues	Atoms						ZeroOcc	AltConf	Trace
			Total	C	H	N	O	S			
1	A	237	4068	1287	2060	336	373	12	0	21	0

There are 3 discrepancies between the modelled and reference sequences:

Chain	Residue	Modelled	Actual	Comment	Reference
A	1833	GLY	-	expression tag	UNP P33334
A	1834	ALA	-	expression tag	UNP P33334
A	1835	MET	-	expression tag	UNP P33334

- Molecule 2 is a protein called A1 cistron-splicing factor AAR2.

Mol	Chain	Residues	Atoms						ZeroOcc	AltConf	Trace
			Total	C	H	N	O	S			
2	B	300	5044	1654	2464	421	485	20	0	17	0

There are 20 discrepancies between the modelled and reference sequences:

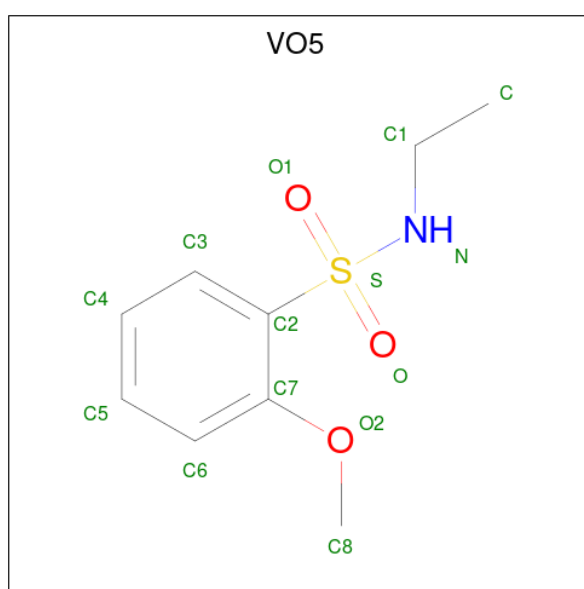
Chain	Residue	Modelled	Actual	Comment	Reference
B	-3	GLY	-	expression tag	UNP P32357
B	-2	ALA	-	expression tag	UNP P32357
B	-1	MET	-	expression tag	UNP P32357
B	0	ALA	-	expression tag	UNP P32357
B	166	SER	LEU	conflict	UNP P32357
B	167	SER	LYS	conflict	UNP P32357
B	?	-	LEU	deletion	UNP P32357
B	?	-	GLN	deletion	UNP P32357
B	?	-	LYS	deletion	UNP P32357
B	?	-	ALA	deletion	UNP P32357
B	?	-	GLY	deletion	UNP P32357
B	?	-	SER	deletion	UNP P32357
B	?	-	LYS	deletion	UNP P32357

Continued on next page...

Continued from previous page...

Chain	Residue	Modelled	Actual	Comment	Reference
B	?	-	MET	deletion	UNP P32357
B	?	-	GLU	deletion	UNP P32357
B	?	-	ALA	deletion	UNP P32357
B	?	-	LYS	deletion	UNP P32357
B	?	-	ASN	deletion	UNP P32357
B	?	-	GLU	deletion	UNP P32357
B	170	SER	ASP	conflict	UNP P32357

- Molecule 3 is N-ethyl-2-methoxybenzene-1-sulfonamide (CCD ID: VO5) (formula: $C_9H_{13}NO_3S$).



Mol	Chain	Residues	Atoms					ZeroOcc	AltConf
3	A	1	Total	C	N	O	S	0	0
			14	9	1	3	1		
3	A	1	Total	C	N	O	S	0	0
			14	9	1	3	1		

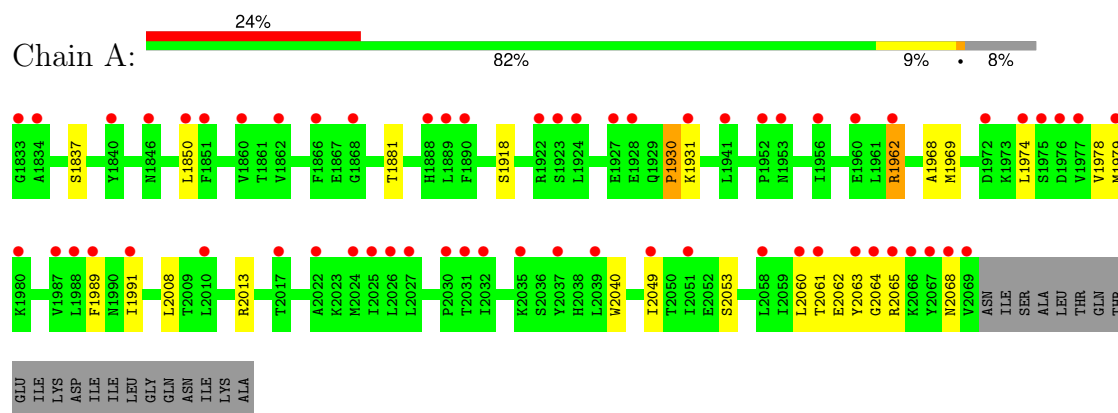
- Molecule 4 is water.

Mol	Chain	Residues	Atoms		ZeroOcc	AltConf
4	A	43	Total	O	0	0
			43	43		
4	B	43	Total	O	0	0
			43	43		

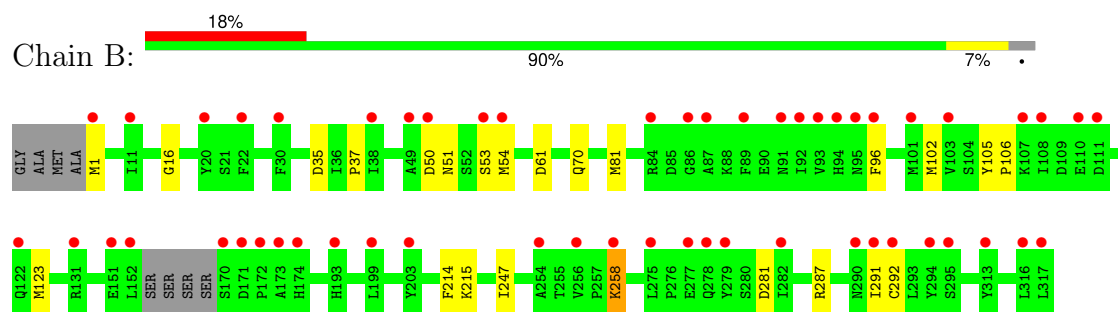
3 Residue-property plots

These plots are drawn for all protein, RNA, DNA and oligosaccharide chains in the entry. The first graphic for a chain summarises the proportions of the various outlier classes displayed in the second graphic. The second graphic shows the sequence view annotated by issues in geometry and electron density. Residues are color-coded according to the number of geometric quality criteria for which they contain at least one outlier: green = 0, yellow = 1, orange = 2 and red = 3 or more. A red dot above a residue indicates a poor fit to the electron density ($RSRZ > 2$). Stretches of 2 or more consecutive residues without any outlier are shown as a green connector. Residues present in the sample, but not in the model, are shown in grey.

• Molecule 1: Pre-mRNA-splicing factor 8



• Molecule 2: A1 cistron-splicing factor AAR2



4 Data and refinement statistics

Property	Value	Source
Space group	C 1 2 1	Depositor
Cell constants a, b, c, α , β , γ	88.64Å 82.07Å 93.58Å 90.00° 108.57° 90.00°	Depositor
Resolution (Å)	44.35 – 1.55 44.35 – 1.55	Depositor EDS
% Data completeness (in resolution range)	99.0 (44.35-1.55) 99.8 (44.35-1.55)	Depositor EDS
R_{merge}	(Not available)	Depositor
R_{sym}	(Not available)	Depositor
$\langle I/\sigma(I) \rangle$ ¹	0.96 (at 1.55Å)	Xtriage
Refinement program	PHENIX 1.17.1_3660	Depositor
R, R_{free}	0.215 , 0.232 0.240 , 0.246	Depositor DCC
R_{free} test set	2091 reflections (2.28%)	wwPDB-VP
Wilson B-factor (Å ²)	38.6	Xtriage
Anisotropy	0.375	Xtriage
Bulk solvent k_{sol} (e/Å ³), B_{sol} (Å ²)	0.41 , 46.1	EDS
L-test for twinning ²	$\langle L \rangle = 0.51$, $\langle L^2 \rangle = 0.34$	Xtriage
Estimated twinning fraction	No twinning to report.	Xtriage
F_o, F_c correlation	0.96	EDS
Total number of atoms	9226	wwPDB-VP
Average B, all atoms (Å ²)	63.0	wwPDB-VP

Xtriage's analysis on translational NCS is as follows: *The largest off-origin peak in the Patterson function is 5.38% of the height of the origin peak. No significant pseudotranslation is detected.*

¹Intensities estimated from amplitudes.

²Theoretical values of $\langle |L| \rangle$, $\langle L^2 \rangle$ for acentric reflections are 0.5, 0.333 respectively for untwinned datasets, and 0.375, 0.2 for perfectly twinned datasets.

5 Model quality

5.1 Standard geometry

Bond lengths and bond angles in the following residue types are not validated in this section: VO5

The Z score for a bond length (or angle) is the number of standard deviations the observed value is removed from the expected value. A bond length (or angle) with $|Z| > 5$ is considered an outlier worth inspection. RMSZ is the root-mean-square of all Z scores of the bond lengths (or angles).

Mol	Chain	Bond lengths		Bond angles	
		RMSZ	$\# Z > 5$	RMSZ	$\# Z > 5$
1	A	0.59	1/2149 (0.0%)	0.70	0/2911
2	B	0.54	0/2739	0.66	0/3699
All	All	0.56	1/4888 (0.0%)	0.68	0/6610

Chiral center outliers are detected by calculating the chiral volume of a chiral center and verifying if the center is modelled as a planar moiety or with the opposite hand. A planarity outlier is detected by checking planarity of atoms in a peptide group, atoms in a mainchain group or atoms of a sidechain that are expected to be planar.

Mol	Chain	#Chirality outliers	#Planarity outliers
1	A	0	10

All (1) bond length outliers are listed below:

Mol	Chain	Res	Type	Atoms	Z	Observed(Å)	Ideal(Å)
1	A	2040	TRP	C-N	9.43	1.52	1.34

There are no bond angle outliers.

There are no chirality outliers.

All (10) planarity outliers are listed below:

Mol	Chain	Res	Type	Group
1	A	1918[A]	SER	Mainchain
1	A	1930	PRO	Mainchain
1	A	1931[A]	LYS	Mainchain
1	A	1931[B]	LYS	Mainchain
1	A	1978	VAL	Mainchain
1	A	1979[A]	MET	Mainchain
1	A	1979[C]	MET	Mainchain

5.2 Too-close contacts ⓘ

In the following table, the Non-H and H(model) columns list the number of non-hydrogen atoms and hydrogen atoms in the chain respectively. The H(added) column lists the number of hydrogen atoms added and optimized by MolProbity. The Clashes column lists the number of clashes within the asymmetric unit, whereas Symm-Clashes lists symmetry-related clashes.

Mol	Chain	Non-H	H(model)	H(added)	Clashes	Symm-Clashes
1	A	2008	2060	1974	14	0
2	B	2580	2464	2396	13	0
3	A	28	0	0	0	0
4	A	43	0	0	0	0
4	B	43	0	0	0	0
All	All	4702	4524	4370	27	0

The all-atom clashscore is defined as the number of clashes found per 1000 atoms (including hydrogen atoms). The all-atom clashscore for this structure is 3.

All (27) close contacts within the same asymmetric unit are listed below, sorted by their clash magnitude.

Atom-1	Atom-2	Interatomic distance (Å)	Clash overlap (Å)
2:B:287:ARG:O	2:B:291:ILE:HD13	1.83	0.77
1:A:2061:THR:O	1:A:2064:GLY:N	2.19	0.75
2:B:50:ASP:OD1	2:B:51:ASN:N	2.29	0.65
1:A:1962:ARG:O	1:A:2013:ARG:NH1	2.29	0.65
1:A:1974:LEU:HD23	1:A:1989:PHE:CE1	2.33	0.63
1:A:1974:LEU:CD2	1:A:1989:PHE:CE1	2.87	0.58
1:A:2064:GLY:O	1:A:2068:ASN:N	2.42	0.53
1:A:1968:ALA:O	1:A:1974:LEU:HD12	2.08	0.53
1:A:2062:GLU:OE1	1:A:2065:ARG:NH1	2.43	0.51
2:B:96:PHE:HB2	2:B:102:MET:HE3	1.95	0.49
2:B:258:LYS:HD2	2:B:258:LYS:H	1.78	0.48
1:A:1969:MET:HE2	1:A:1974:LEU:HB3	1.95	0.47
2:B:37:PRO:HD3	2:B:105:TYR:CD1	2.51	0.46
2:B:1:MET:HB3	2:B:35:ASP:HA	1.97	0.46
1:A:2049:ILE:O	1:A:2053[A]:SER:OG	2.28	0.45
2:B:214:PHE:O	2:B:215:LYS:HB2	2.17	0.44
2:B:70:GLN:HB3	2:B:81:MET:HE1	1.99	0.44
2:B:51:ASN:ND2	2:B:53:SER:O	2.51	0.43
2:B:53:SER:O	2:B:54[A]:MET:HB3	2.18	0.43
2:B:247:ILE:HG22	2:B:292:CYS:SG	2.60	0.42
1:A:1850:LEU:HD12	1:A:1930:PRO:HG3	2.02	0.41
1:A:1850:LEU:HD22	1:A:1881:THR:HG22	2.03	0.41

Continued on next page...

Continued from previous page...

Atom-1	Atom-2	Interatomic distance (Å)	Clash overlap (Å)
1:A:1991:ILE:HG12	1:A:2008:LEU:CD1	2.50	0.41
1:A:2060:LEU:O	1:A:2063:TYR:HB3	2.21	0.40
1:A:1991:ILE:HG12	1:A:2008:LEU:HD13	2.04	0.40

There are no symmetry-related clashes.

5.3 Torsion angles [i](#)

5.3.1 Protein backbone [i](#)

In the following table, the Percentiles column shows the percent Ramachandran outliers of the chain as a percentile score with respect to all X-ray entries followed by that with respect to entries of similar resolution.

The Analysed column shows the number of residues for which the backbone conformation was analysed, and the total number of residues.

Mol	Chain	Analysed	Favoured	Allowed	Outliers	Percentiles	
1	A	258/258 (100%)	246 (95%)	12 (5%)	0	100	100
2	B	315/308 (102%)	302 (96%)	12 (4%)	1 (0%)	37	18
All	All	573/566 (101%)	548 (96%)	24 (4%)	1 (0%)	44	24

All (1) Ramachandran outliers are listed below:

Mol	Chain	Res	Type
2	B	106	PRO

5.3.2 Protein sidechains [i](#)

In the following table, the Percentiles column shows the percent sidechain outliers of the chain as a percentile score with respect to all X-ray entries followed by that with respect to entries of similar resolution.

The Analysed column shows the number of residues for which the sidechain conformation was analysed, and the total number of residues.

Mol	Chain	Analysed	Rotameric	Outliers	Percentiles	
1	A	237/233 (102%)	235 (99%)	2 (1%)	79	63
2	B	294/284 (104%)	290 (99%)	4 (1%)	62	37

Continued on next page...

Continued from previous page...

Mol	Chain	Analysed	Rotameric	Outliers	Percentiles	
All	All	531/517 (103%)	525 (99%)	6 (1%)	73	49

All (6) residues with a non-rotameric sidechain are listed below:

Mol	Chain	Res	Type
1	A	1837	SER
1	A	1962	ARG
2	B	123[A]	MET
2	B	123[B]	MET
2	B	258	LYS
2	B	281	ASP

Sometimes sidechains can be flipped to improve hydrogen bonding and reduce clashes. All (1) such sidechains are listed below:

Mol	Chain	Res	Type
2	B	290	ASN

5.3.3 RNA [i](#)

There are no RNA molecules in this entry.

5.4 Non-standard residues in protein, DNA, RNA chains [i](#)

There are no non-standard protein/DNA/RNA residues in this entry.

5.5 Carbohydrates [i](#)

There are no oligosaccharides in this entry.

5.6 Ligand geometry [i](#)

2 ligands are modelled in this entry.

In the following table, the Counts columns list the number of bonds (or angles) for which Mogul statistics could be retrieved, the number of bonds (or angles) that are observed in the model and the number of bonds (or angles) that are defined in the Chemical Component Dictionary. The Link column lists molecule types, if any, to which the group is linked. The Z score for a bond length (or angle) is the number of standard deviations the observed value is removed from the

expected value. A bond length (or angle) with $|Z| > 2$ is considered an outlier worth inspection. RMSZ is the root-mean-square of all Z scores of the bond lengths (or angles).

Mol	Type	Chain	Res	Link	Bond lengths			Bond angles		
					Counts	RMSZ	$\# Z > 2$	Counts	RMSZ	$\# Z > 2$
3	VO5	A	2101	-	14,14,14	3.62	4 (28%)	19,19,19	2.02	5 (26%)
3	VO5	A	2102	-	14,14,14	4.15	6 (42%)	19,19,19	3.04	11 (57%)

In the following table, the Chirals column lists the number of chiral outliers, the number of chiral centers analysed, the number of these observed in the model and the number defined in the Chemical Component Dictionary. Similar counts are reported in the Torsion and Rings columns. '-' means no outliers of that kind were identified.

Mol	Type	Chain	Res	Link	Chirals	Torsions	Rings
3	VO5	A	2101	-	-	0/12/12/12	0/1/1/1
3	VO5	A	2102	-	-	4/12/12/12	0/1/1/1

All (10) bond length outliers are listed below:

Mol	Chain	Res	Type	Atoms	Z	Observed(Å)	Ideal(Å)
3	A	2102	VO5	C2-S	-9.78	1.63	1.77
3	A	2101	VO5	C2-S	-9.07	1.64	1.77
3	A	2102	VO5	O1-S	-7.72	1.34	1.43
3	A	2102	VO5	O-S	-7.31	1.35	1.43
3	A	2101	VO5	O1-S	-6.65	1.35	1.43
3	A	2101	VO5	O-S	-6.10	1.36	1.43
3	A	2102	VO5	C3-C2	-4.42	1.33	1.39
3	A	2101	VO5	O2-C7	-3.07	1.32	1.37
3	A	2102	VO5	S-N	-2.45	1.58	1.61
3	A	2102	VO5	O2-C7	-2.29	1.33	1.37

All (16) bond angle outliers are listed below:

Mol	Chain	Res	Type	Atoms	Z	Observed(°)	Ideal(°)
3	A	2102	VO5	C3-C2-C7	-6.54	115.03	120.30
3	A	2102	VO5	C7-C2-S	5.62	127.69	120.66
3	A	2102	VO5	C2-S-N	-5.37	100.54	107.86
3	A	2101	VO5	O2-C7-C2	-4.97	112.69	116.49
3	A	2101	VO5	C3-C2-C7	-4.59	116.60	120.30
3	A	2102	VO5	C1-N-S	3.67	126.90	119.64
3	A	2102	VO5	C4-C3-C2	3.32	124.70	118.76
3	A	2101	VO5	C7-C2-S	3.08	124.51	120.66
3	A	2102	VO5	C8-O2-C7	3.01	121.93	117.51

Continued on next page...

Continued from previous page...

Mol	Chain	Res	Type	Atoms	Z	Observed(°)	Ideal(°)
3	A	2102	VO5	O-S-O1	-2.79	116.13	119.52
3	A	2102	VO5	O-S-N	2.74	111.30	107.03
3	A	2101	VO5	C6-C7-C2	2.63	123.75	119.04
3	A	2102	VO5	O1-S-C2	2.55	111.90	107.68
3	A	2102	VO5	O2-C7-C2	-2.55	114.54	116.49
3	A	2101	VO5	C1-N-S	2.30	124.20	119.64
3	A	2102	VO5	C6-C7-C2	2.10	122.80	119.04

There are no chirality outliers.

All (4) torsion outliers are listed below:

Mol	Chain	Res	Type	Atoms
3	A	2102	VO5	C1-N-S-C2
3	A	2102	VO5	C1-N-S-O1
3	A	2102	VO5	C1-N-S-O
3	A	2102	VO5	C7-C2-S-N

There are no ring outliers.

No monomer is involved in short contacts.

5.7 Other polymers [i](#)

There are no such residues in this entry.

5.8 Polymer linkage issues [i](#)

There are no chain breaks in this entry.

6 Fit of model and data

6.1 Protein, DNA and RNA chains

In the following table, the column labelled ‘#RSRZ > 2’ contains the number (and percentage) of RSRZ outliers, followed by percent RSRZ outliers for the chain as percentile scores relative to all X-ray entries and entries of similar resolution. The OWAB column contains the minimum, median, 95th percentile and maximum values of the occupancy-weighted average B-factor per residue. The column labelled ‘Q < 0.9’ lists the number of (and percentage) of residues with an average occupancy less than 0.9.

Mol	Chain	Analysed	<RSRZ>	#RSRZ>2	OWAB(Å ²)	Q<0.9
1	A	237/258 (91%)	1.51	61 (25%) 2 2	19, 55, 98, 143	12 (5%)
2	B	300/308 (97%)	1.23	54 (18%) 4 5	19, 58, 98, 123	9 (3%)
All	All	537/566 (94%)	1.35	115 (21%) 3 3	19, 57, 98, 143	21 (3%)

All (115) RSRZ outliers are listed below:

Mol	Chain	Res	Type	RSRZ
1	A	1989	PHE	9.9
1	A	2069	VAL	9.3
1	A	2037	TYR	8.0
2	B	152	LEU	7.6
1	A	1988	LEU	6.7
1	A	1987	VAL	6.5
1	A	2060	LEU	6.2
2	B	316	LEU	6.1
2	B	170	SER	5.5
1	A	2068	ASN	4.8
1	A	1979[A]	MET	4.8
2	B	54[A]	MET	4.6
2	B	279	TYR	4.6
1	A	2061	THR	4.4
2	B	317	LEU	4.4
1	A	2063	TYR	4.3
1	A	1976	ASP	4.3
2	B	101	MET	4.3
1	A	2064	GLY	4.2
1	A	1974	LEU	4.2
1	A	2017[A]	THR	4.2
1	A	1866	PHE	3.9
1	A	2067	TYR	3.9
1	A	1833	GLY	3.9

Continued on next page...

Continued from previous page...

Mol	Chain	Res	Type	RSRZ
2	B	254	ALA	3.9
2	B	108	ILE	3.8
2	B	172	PRO	3.8
1	A	1977	VAL	3.7
2	B	275	LEU	3.7
1	A	2027	LEU	3.6
1	A	2039	LEU	3.6
1	A	1975	SER	3.6
1	A	2065	ARG	3.6
2	B	203[A]	TYR	3.4
1	A	2066	LYS	3.3
2	B	292	CYS	3.3
1	A	1834	ALA	3.2
2	B	174	HIS	3.2
1	A	2030	PRO	3.1
1	A	1889	LEU	3.0
1	A	1888	HIS	3.0
2	B	111	ASP	3.0
1	A	1840	TYR	2.9
2	B	96	PHE	2.9
2	B	282	ILE	2.8
2	B	291	ILE	2.8
1	A	1850	LEU	2.7
2	B	1	MET	2.7
2	B	84	ARG	2.7
2	B	38	ILE	2.7
1	A	1962	ARG	2.7
2	B	173	ALA	2.7
1	A	1851	PHE	2.7
2	B	53	SER	2.6
2	B	49	ALA	2.6
2	B	93	VAL	2.6
2	B	256	VAL	2.6
2	B	294	TYR	2.6
2	B	290	ASN	2.6
2	B	50	ASP	2.6
1	A	1860	VAL	2.6
2	B	277	GLU	2.6
1	A	1956	ILE	2.6
2	B	89	PHE	2.5
2	B	94	HIS	2.5
2	B	122[A]	GLN	2.5

Continued on next page...

Continued from previous page...

Mol	Chain	Res	Type	RSRZ
1	A	1922	ARG	2.5
1	A	2032	ILE	2.5
1	A	1924	LEU	2.5
1	A	2058	LEU	2.5
2	B	151	GLU	2.5
1	A	2035	LYS	2.5
2	B	278	GLN	2.5
2	B	11	ILE	2.5
1	A	2022	ALA	2.5
2	B	86	GLY	2.4
2	B	87	ALA	2.4
1	A	1931[A]	LYS	2.4
1	A	1991	ILE	2.4
1	A	2025	ILE	2.4
1	A	1927	GLU	2.4
1	A	2051	ILE	2.4
2	B	313	TYR	2.4
2	B	171	ASP	2.4
1	A	2010	LEU	2.3
1	A	1868	GLY	2.3
2	B	199	LEU	2.3
2	B	131	ARG	2.3
1	A	1890	PHE	2.3
1	A	1972	ASP	2.3
2	B	107	LYS	2.3
2	B	258	LYS	2.3
2	B	91	ASN	2.2
1	A	2031	THR	2.2
2	B	110	GLU	2.2
1	A	2024[A]	MET	2.2
1	A	1960[A]	GLU	2.2
1	A	1923	SER	2.2
1	A	1980[A]	LYS	2.2
2	B	22	PHE	2.2
2	B	30	PHE	2.2
1	A	1928	GLU	2.2
2	B	20	TYR	2.2
2	B	103	VAL	2.1
1	A	1846	ASN	2.1
2	B	193	HIS	2.1
1	A	2026	LEU	2.1
1	A	2049	ILE	2.1

Continued on next page...

Continued from previous page...

Mol	Chain	Res	Type	RSRZ
2	B	295	SER	2.1
1	A	1953	ASN	2.1
2	B	95	ASN	2.1
1	A	1941	LEU	2.1
2	B	92	ILE	2.0
1	A	1952	PRO	2.0
1	A	1862	VAL	2.0

6.2 Non-standard residues in protein, DNA, RNA chains [i](#)

There are no non-standard protein/DNA/RNA residues in this entry.

6.3 Carbohydrates [i](#)

There are no monosaccharides in this entry.

6.4 Ligands [i](#)

In the following table, the Atoms column lists the number of modelled atoms in the group and the number defined in the chemical component dictionary. The B-factors column lists the minimum, median, 95th percentile and maximum values of B factors of atoms in the group. The column labelled 'Q< 0.9' lists the number of atoms with occupancy less than 0.9.

Mol	Type	Chain	Res	Atoms	RSCC	RSR	B-factors(\AA^2)	Q<0.9
3	VO5	A	2102	14/14	0.73	0.25	20,20,20,20	14
3	VO5	A	2101	14/14	0.81	0.23	20,20,20,20	14

6.5 Other polymers [i](#)

There are no such residues in this entry.