



# Full wwPDB X-ray Structure Validation Report ⓘ

Oct 13, 2024 – 02:37 am BST

PDB ID : 6FHV  
Title : Crystal structure of Penicillium oxalicum Glucoamylase  
Authors : Roth, C.; Moroz, O.V.; Ariza, A.; Friis, E.P.; Davies, G.J.; Wilson, K.S.  
Deposited on : 2018-01-15  
Resolution : 2.00 Å(reported)

This is a Full wwPDB X-ray Structure Validation Report for a publicly released PDB entry.

We welcome your comments at [validation@mail.wwpdb.org](mailto:validation@mail.wwpdb.org)

A user guide is available at

<https://www.wwpdb.org/validation/2017/XrayValidationReportHelp>

with specific help available everywhere you see the ⓘ symbol.

The types of validation reports are described at

<http://www.wwpdb.org/validation/2017/FAQs#types>.

---

The following versions of software and data (see [references ⓘ](#)) were used in the production of this report:

MolProbity	:	4.02b-467
Mogul	:	1.8.4, CSD as541be (2020)
Xtriage (Phenix)	:	1.13
EDS	:	3.0
buster-report	:	1.1.7 (2018)
Percentile statistics	:	20231227.v01 (using entries in the PDB archive December 27th 2023)
CCP4	:	9.0.003 (Gargrove)
Density-Fitness	:	1.0.11
Ideal geometry (proteins)	:	Engh & Huber (2001)
Ideal geometry (DNA, RNA)	:	Parkinson et al. (1996)
Validation Pipeline (wwPDB-VP)	:	2.39

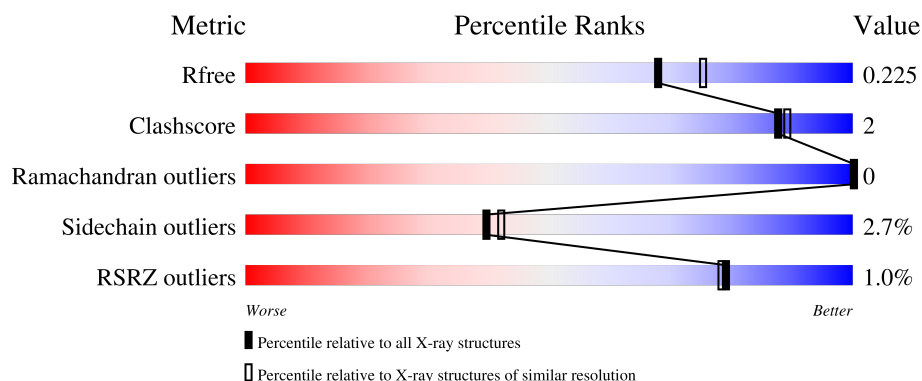
# 1 Overall quality at a glance

The following experimental techniques were used to determine the structure:

*X-RAY DIFFRACTION*

The reported resolution of this entry is 2.00 Å.

Percentile scores (ranging between 0-100) for global validation metrics of the entry are shown in the following graphic. The table shows the number of entries on which the scores are based.



Metric	Whole archive (#Entries)	Similar resolution (#Entries, resolution range(Å))
$R_{free}$	164625	9409 (2.00-2.00)
Clashscore	180529	10737 (2.00-2.00)
Ramachandran outliers	177936	10628 (2.00-2.00)
Sidechain outliers	177891	10627 (2.00-2.00)
RSRZ outliers	164620	9409 (2.00-2.00)

The table below summarises the geometric issues observed across the polymeric chains and their fit to the electron density. The red, orange, yellow and green segments of the lower bar indicate the fraction of residues that contain outliers for  $\geq 3$ , 2, 1 and 0 types of geometric quality criteria respectively. A grey segment represents the fraction of residues that are not modelled. The numeric value for each fraction is indicated below the corresponding segment, with a dot representing fractions  $\leq 5\%$ . The upper red bar (where present) indicates the fraction of residues that have poor fit to the electron density. The numeric value is given above the bar.

Mol	Chain	Length	Quality of chain
1	A	594	
2	B	2	
3	C	3	

## 2 Entry composition [i](#)

There are 8 unique types of molecules in this entry. The entry contains 4951 atoms, of which 0 are hydrogens and 0 are deuteriums.

In the tables below, the ZeroOcc column contains the number of atoms modelled with zero occupancy, the AltConf column contains the number of residues with at least one atom in alternate conformation and the Trace column contains the number of residues modelled with at most 2 atoms.

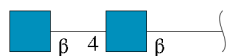
- Molecule 1 is a protein called Glucoamylase.

Mol	Chain	Residues	Atoms					ZeroOcc	AltConf	Trace
1	A	585	Total	C	N	O	S	0	2	0
			4574	2918	759	885	12			

There are 10 discrepancies between the modelled and reference sequences:

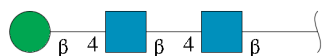
Chain	Residue	Modelled	Actual	Comment	Reference
A	74	ASN	ASP	conflict	UNP S7ZIW0
A	100	VAL	LYS	conflict	UNP S7ZIW0
A	113	ARG	GLN	conflict	UNP S7ZIW0
A	400	SER	PRO	conflict	UNP S7ZIW0
A	406	TYR	PHE	conflict	UNP S7ZIW0
A	408	LYS	SER	conflict	UNP S7ZIW0
A	415	SER	ALA	conflict	UNP S7ZIW0
A	444	ALA	THR	conflict	UNP S7ZIW0
A	508	VAL	ILE	conflict	UNP S7ZIW0
A	616	PHE	-	expression tag	UNP S7ZIW0

- Molecule 2 is an oligosaccharide called 2-acetamido-2-deoxy-beta-D-glucopyranose-(1-4)-2-acetamido-2-deoxy-beta-D-glucopyranose.



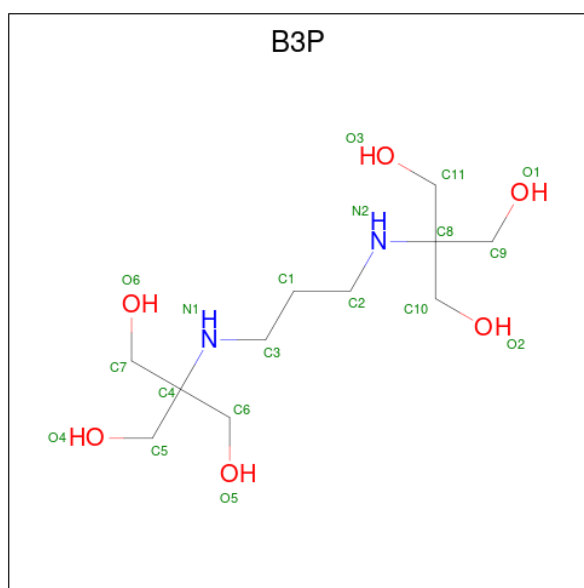
Mol	Chain	Residues	Atoms				ZeroOcc	AltConf	Trace
2	B	2	Total	C	N	O	0	0	0
			28	16	2	10			

- Molecule 3 is an oligosaccharide called beta-D-mannopyranose-(1-4)-2-acetamido-2-deoxy-beta-D-glucopyranose-(1-4)-2-acetamido-2-deoxy-beta-D-glucopyranose.



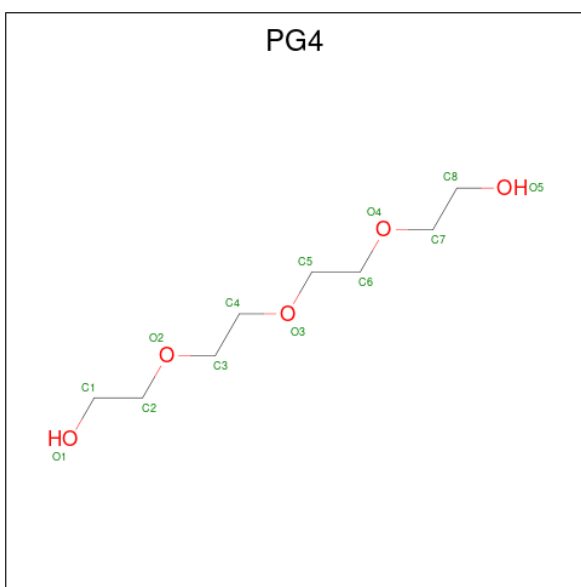
Mol	Chain	Residues	Atoms				ZeroOcc	AltConf	Trace
3	C	3	Total	C	N	O	0	0	0
			39	22	2	15			

- Molecule 4 is 2-[3-(2-HYDROXY-1,1-DIHYDROXYMETHYL-ETHYLAMINO)-PROPYL AMINO]-2-HYDROXYMETHYL-PROPANE-1,3-DIOL (three-letter code: B3P) (formula:  $C_{11}H_{26}N_2O_6$ ).



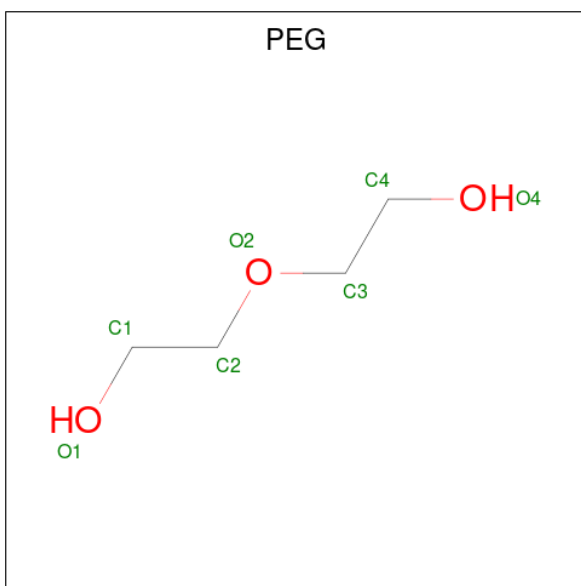
Mol	Chain	Residues	Atoms				ZeroOcc	AltConf
4	A	1	Total	C	N	O	0	0
			19	11	2	6		

- Molecule 5 is TETRAETHYLENE GLYCOL (three-letter code: PG4) (formula:  $C_8H_{18}O_5$ ).



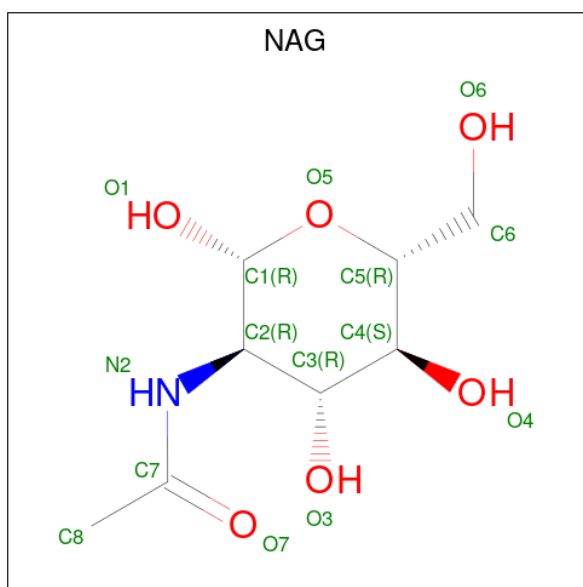
Mol	Chain	Residues	Atoms			ZeroOcc	AltConf
5	A	1	Total	C	O	0	0
			13	8	5		

- Molecule 6 is DI(HYDROXYETHYL)ETHER (three-letter code: PEG) (formula:  $C_4H_{10}O_3$ ).



Mol	Chain	Residues	Atoms			ZeroOcc	AltConf
6	A	1	Total	C	O	0	0
			7	4	3		

- Molecule 7 is 2-acetamido-2-deoxy-beta-D-glucopyranose (three-letter code: NAG) (formula:  $C_8H_{15}NO_6$ ).



Mol	Chain	Residues	Atoms				ZeroOcc	AltConf
7	A	1	Total	C	N	O	0	0
			14	8	1	5		

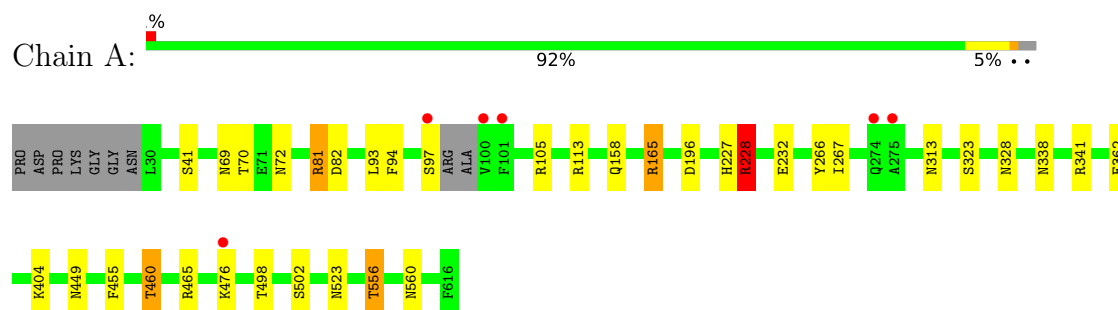
- Molecule 8 is water.

Mol	Chain	Residues	Atoms		ZeroOcc	AltConf
8	A	257	Total	O	0	0
			257	257		

### 3 Residue-property plots [i](#)

These plots are drawn for all protein, RNA, DNA and oligosaccharide chains in the entry. The first graphic for a chain summarises the proportions of the various outlier classes displayed in the second graphic. The second graphic shows the sequence view annotated by issues in geometry and electron density. Residues are color-coded according to the number of geometric quality criteria for which they contain at least one outlier: green = 0, yellow = 1, orange = 2 and red = 3 or more. A red dot above a residue indicates a poor fit to the electron density ( $RSRZ > 2$ ). Stretches of 2 or more consecutive residues without any outlier are shown as a green connector. Residues present in the sample, but not in the model, are shown in grey.

- Molecule 1: Glucoamylase



- Molecule 2: 2-acetamido-2-deoxy-beta-D-glucopyranose-(1-4)-2-acetamido-2-deoxy-beta-D-glucopyranose



- Molecule 3: beta-D-mannopyranose-(1-4)-2-acetamido-2-deoxy-beta-D-glucopyranose-(1-4)-2-acetamido-2-deoxy-beta-D-glucopyranose



## 4 Data and refinement statistics

Property	Value	Source
Space group	H 3 2	Depositor
Cell constants a, b, c, $\alpha$ , $\beta$ , $\gamma$	189.25Å 189.25Å 115.38Å 90.00° 90.00° 120.00°	Depositor
Resolution (Å)	47.00 – 2.00 47.00 – 2.00	Depositor EDS
% Data completeness (in resolution range)	99.9 (47.00-2.00) 99.9 (47.00-2.00)	Depositor EDS
$R_{merge}$	(Not available)	Depositor
$R_{sym}$	(Not available)	Depositor
$\langle I/\sigma(I) \rangle$ <sup>1</sup>	1.67 (at 2.00Å)	Xtriage
Refinement program	REFMAC 5.8.0189	Depositor
R, $R_{free}$	0.187 , 0.219 0.195 , 0.225	Depositor DCC
$R_{free}$ test set	2614 reflections (4.90%)	wwPDB-VP
Wilson B-factor (Å <sup>2</sup> )	33.1	Xtriage
Anisotropy	0.154	Xtriage
Bulk solvent $k_{sol}$ (e/Å <sup>3</sup> ), $B_{sol}$ (Å <sup>2</sup> )	0.33 , 34.8	EDS
L-test for twinning <sup>2</sup>	$\langle  L  \rangle = 0.41$ , $\langle L^2 \rangle = 0.23$	Xtriage
Estimated twinning fraction	0.096 for -2/3*h-1/3*k-4/3*l,-1/3*h-2/3*k+4/3*l,-1/3*h+1/3*k+1/3*l 0.085 for -h,1/3*h-1/3*k-4/3*l,-1/3*h-2/3*k+1/3*l 0.077 for -1/3*h+1/3*k+4/3*l,-k,2/3*h+1/3*k+1/3*l	Xtriage
$F_o, F_c$ correlation	0.95	EDS
Total number of atoms	4951	wwPDB-VP
Average B, all atoms (Å <sup>2</sup> )	37.0	wwPDB-VP

Xtriage's analysis on translational NCS is as follows: *The largest off-origin peak in the Patterson function is 3.46% of the height of the origin peak. No significant pseudotranslation is detected.*

<sup>1</sup>Intensities estimated from amplitudes.

<sup>2</sup>Theoretical values of  $\langle |L| \rangle$ ,  $\langle L^2 \rangle$  for acentric reflections are 0.5, 0.333 respectively for untwinned datasets, and 0.375, 0.2 for perfectly twinned datasets.



## 5 Model quality [i](#)

### 5.1 Standard geometry [i](#)

Bond lengths and bond angles in the following residue types are not validated in this section: B3P, BMA, PG4, PEG, NAG

The Z score for a bond length (or angle) is the number of standard deviations the observed value is removed from the expected value. A bond length (or angle) with  $|Z| > 5$  is considered an outlier worth inspection. RMSZ is the root-mean-square of all Z scores of the bond lengths (or angles).

Mol	Chain	Bond lengths		Bond angles	
		RMSZ	$\# Z  > 5$	RMSZ	$\# Z  > 5$
1	A	0.75	0/4699	0.85	11/6402 (0.2%)

There are no bond length outliers.

All (11) bond angle outliers are listed below:

Mol	Chain	Res	Type	Atoms	Z	Observed(°)	Ideal(°)
1	A	81	ARG	NE-CZ-NH2	-12.83	113.88	120.30
1	A	81	ARG	NE-CZ-NH1	10.95	125.77	120.30
1	A	165	ARG	NE-CZ-NH2	-9.18	115.71	120.30
1	A	165	ARG	NE-CZ-NH1	9.05	124.83	120.30
1	A	341	ARG	NE-CZ-NH2	-8.55	116.02	120.30
1	A	228	ARG	NE-CZ-NH1	8.40	124.50	120.30
1	A	465	ARG	NE-CZ-NH1	7.66	124.13	120.30
1	A	228	ARG	NE-CZ-NH2	-7.50	116.55	120.30
1	A	341	ARG	NE-CZ-NH1	6.42	123.51	120.30
1	A	113	ARG	NE-CZ-NH1	5.64	123.12	120.30
1	A	113	ARG	NE-CZ-NH2	-5.38	117.61	120.30

There are no chirality outliers.

There are no planarity outliers.

### 5.2 Too-close contacts [i](#)

In the following table, the Non-H and H(model) columns list the number of non-hydrogen atoms and hydrogen atoms in the chain respectively. The H(added) column lists the number of hydrogen atoms added and optimized by MolProbity. The Clashes column lists the number of clashes within the asymmetric unit, whereas Symm-Clashes lists symmetry-related clashes.

Mol	Chain	Non-H	H(model)	H(added)	Clashes	Symm-Clashes
1	A	4574	0	4384	17	0
2	B	28	0	25	0	0
3	C	39	0	34	0	0
4	A	19	0	26	0	0
5	A	13	0	18	0	0
6	A	7	0	10	0	0
7	A	14	0	13	0	0
8	A	257	0	0	2	3
All	All	4951	0	4510	17	3

The all-atom clashscore is defined as the number of clashes found per 1000 atoms (including hydrogen atoms). The all-atom clashscore for this structure is 2.

All (17) close contacts within the same asymmetric unit are listed below, sorted by their clash magnitude.

Atom-1	Atom-2	Interatomic distance (Å)	Clash overlap (Å)
1:A:328:ASN:HD21	1:A:338:ASN:H	1.31	0.75
1:A:228:ARG:HD2	1:A:232:GLU:OE2	1.91	0.71
1:A:81:ARG:HH22	1:A:158:GLN:NE2	1.91	0.68
1:A:81:ARG:HH22	1:A:158:GLN:HE21	1.50	0.60
1:A:523:ASN:HD22	1:A:560:ASN:ND2	2.00	0.59
1:A:267:ILE:H	1:A:313:ASN:HD22	1.53	0.56
1:A:94:PHE:O	1:A:105:ARG:NH1	2.40	0.55
1:A:69:ASN:ND2	1:A:449:ASN:H	2.10	0.49
1:A:556:THR:HG21	8:A:946:HOH:O	2.15	0.46
1:A:523:ASN:HD22	1:A:560:ASN:HD21	1.63	0.46
1:A:267:ILE:H	1:A:313:ASN:ND2	2.15	0.44
1:A:266:TYR:HB2	1:A:313:ASN:HD22	1.82	0.44
1:A:165:ARG:HD2	1:A:196:ASP:OD2	2.18	0.42
1:A:227:HIS:HE1	8:A:939:HOH:O	2.03	0.42
1:A:328:ASN:ND2	1:A:338:ASN:H	2.08	0.42
1:A:41:SER:HA	1:A:455:PHE:CD1	2.56	0.41
1:A:362:GLU:OE1	1:A:460:THR:CG2	2.69	0.40

All (3) symmetry-related close contacts are listed below. The label for Atom-2 includes the symmetry operator and encoded unit-cell translations to be applied.

Atom-1	Atom-2	Interatomic distance (Å)	Clash overlap (Å)
8:A:751:HOH:O	8:A:751:HOH:O[18_444]	1.16	1.04
8:A:849:HOH:O	8:A:849:HOH:O[4_554]	1.21	0.99
8:A:738:HOH:O	8:A:738:HOH:O[4_554]	1.97	0.23

## 5.3 Torsion angles

### 5.3.1 Protein backbone

In the following table, the Percentiles column shows the percent Ramachandran outliers of the chain as a percentile score with respect to all X-ray entries followed by that with respect to entries of similar resolution.

The Analysed column shows the number of residues for which the backbone conformation was analysed, and the total number of residues.

Mol	Chain	Analysed	Favoured	Allowed	Outliers	Percentiles	
1	A	583/594 (98%)	563 (97%)	20 (3%)	0	100	100

There are no Ramachandran outliers to report.

### 5.3.2 Protein sidechains

In the following table, the Percentiles column shows the percent sidechain outliers of the chain as a percentile score with respect to all X-ray entries followed by that with respect to entries of similar resolution.

The Analysed column shows the number of residues for which the sidechain conformation was analysed, and the total number of residues.

Mol	Chain	Analysed	Rotameric	Outliers	Percentiles	
1	A	490/495 (99%)	476 (97%)	14 (3%)	37	39

All (14) residues with a non-rotameric sidechain are listed below:

Mol	Chain	Res	Type
1	A	70	THR
1	A	72	ASN
1	A	82	ASP
1	A	93	LEU
1	A	97	SER
1	A	228	ARG
1	A	323	SER
1	A	404	LYS
1	A	460	THR
1	A	476[A]	LYS
1	A	476[B]	LYS
1	A	498	THR
1	A	502	SER

*Continued on next page...*

*Continued from previous page...*

Mol	Chain	Res	Type
1	A	556	THR

Sometimes sidechains can be flipped to improve hydrogen bonding and reduce clashes. All (14) such sidechains are listed below:

Mol	Chain	Res	Type
1	A	69	ASN
1	A	148	ASN
1	A	158	GLN
1	A	226	GLN
1	A	227	HIS
1	A	270	ASN
1	A	274	GLN
1	A	313	ASN
1	A	328	ASN
1	A	422	GLN
1	A	425	GLN
1	A	529	ASN
1	A	553	ASN
1	A	560	ASN

### 5.3.3 RNA ⓘ

There are no RNA molecules in this entry.

## 5.4 Non-standard residues in protein, DNA, RNA chains ⓘ

There are no non-standard protein/DNA/RNA residues in this entry.

## 5.5 Carbohydrates ⓘ

5 monosaccharides are modelled in this entry.

In the following table, the Counts columns list the number of bonds (or angles) for which Mogul statistics could be retrieved, the number of bonds (or angles) that are observed in the model and the number of bonds (or angles) that are defined in the Chemical Component Dictionary. The Link column lists molecule types, if any, to which the group is linked. The Z score for a bond length (or angle) is the number of standard deviations the observed value is removed from the expected value. A bond length (or angle) with  $|Z| > 2$  is considered an outlier worth inspection. RMSZ is the root-mean-square of all Z scores of the bond lengths (or angles).

Mol	Type	Chain	Res	Link	Bond lengths			Bond angles		
					Counts	RMSZ	# Z  > 2	Counts	RMSZ	# Z  > 2
2	NAG	B	1	2,1	14,14,15	0.40	0	17,19,21	1.28	3 (17%)
2	NAG	B	2	2	14,14,15	0.36	0	17,19,21	0.82	0
3	NAG	C	1	3,1	14,14,15	0.63	0	17,19,21	1.01	1 (5%)
3	NAG	C	2	3	14,14,15	0.44	0	17,19,21	1.28	1 (5%)
3	BMA	C	3	3	11,11,12	0.57	0	15,15,17	1.13	1 (6%)

In the following table, the Chirals column lists the number of chiral outliers, the number of chiral centers analysed, the number of these observed in the model and the number defined in the Chemical Component Dictionary. Similar counts are reported in the Torsion and Rings columns. '-' means no outliers of that kind were identified.

Mol	Type	Chain	Res	Link	Chirals	Torsions	Rings
2	NAG	B	1	2,1	-	0/6/23/26	0/1/1/1
2	NAG	B	2	2	-	1/6/23/26	0/1/1/1
3	NAG	C	1	3,1	-	0/6/23/26	0/1/1/1
3	NAG	C	2	3	-	2/6/23/26	0/1/1/1
3	BMA	C	3	3	-	0/2/19/22	0/1/1/1

There are no bond length outliers.

All (6) bond angle outliers are listed below:

Mol	Chain	Res	Type	Atoms	Z	Observed(°)	Ideal(°)
3	C	2	NAG	C8-C7-N2	3.27	121.63	116.10
2	B	1	NAG	C2-N2-C7	2.47	126.43	122.90
2	B	1	NAG	O5-C5-C6	2.27	110.76	107.20
3	C	3	BMA	O5-C5-C6	2.21	110.67	107.20
3	C	1	NAG	C1-O5-C5	2.06	114.99	112.19
2	B	1	NAG	O7-C7-N2	2.06	125.74	121.95

There are no chirality outliers.

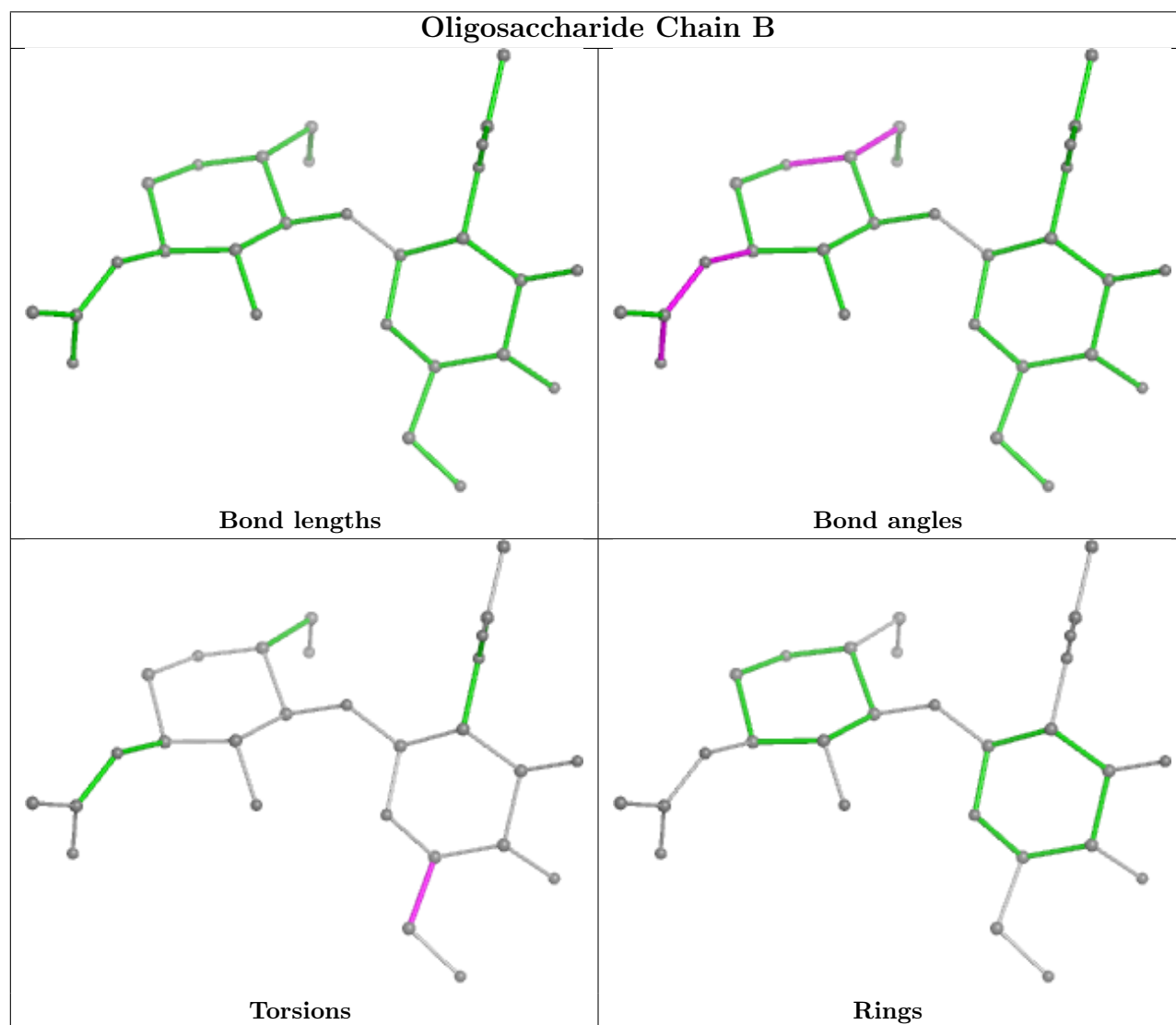
All (3) torsion outliers are listed below:

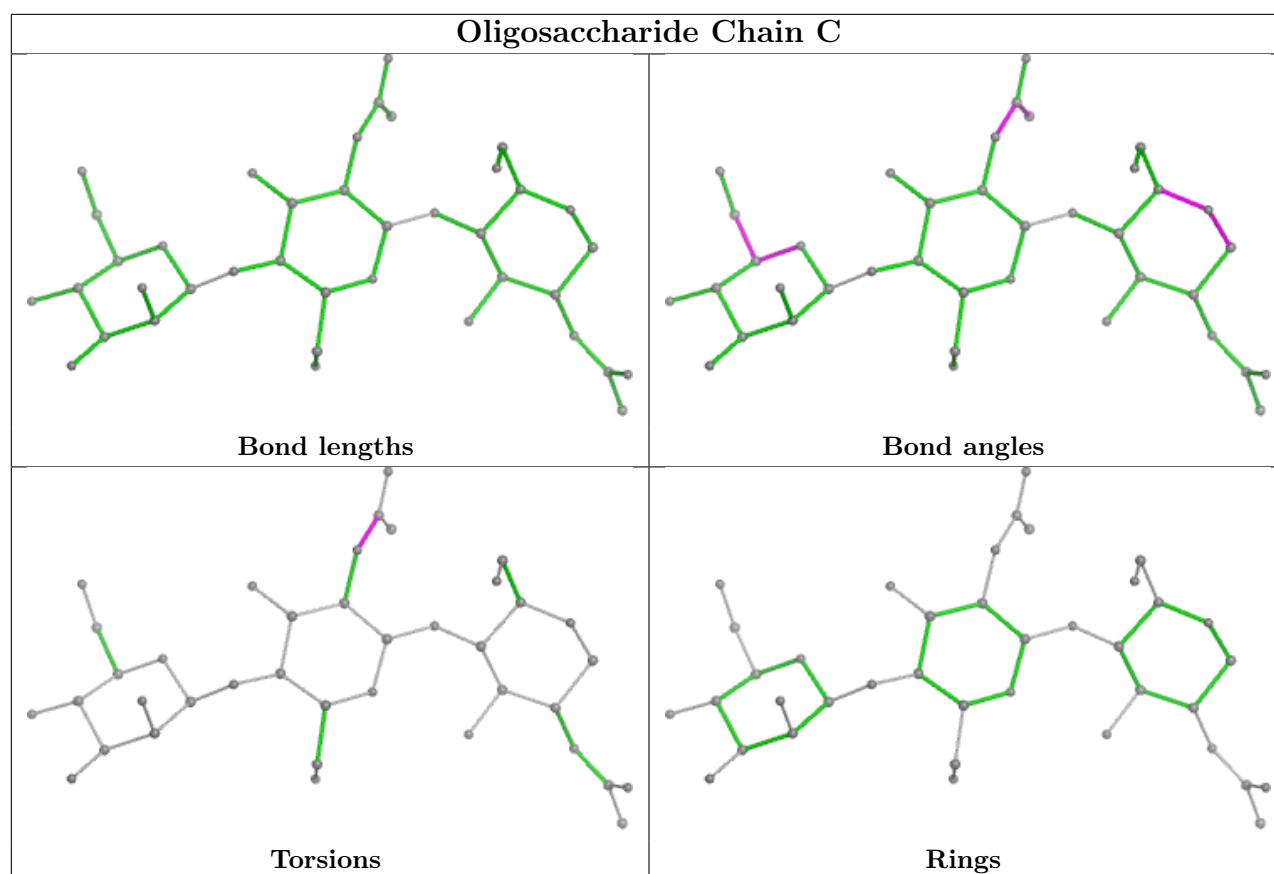
Mol	Chain	Res	Type	Atoms
3	C	2	NAG	C8-C7-N2-C2
3	C	2	NAG	O7-C7-N2-C2
2	B	2	NAG	O5-C5-C6-O6

There are no ring outliers.

No monomer is involved in short contacts.

The following is a two-dimensional graphical depiction of Mogul quality analysis of bond lengths, bond angles, torsion angles, and ring geometry for oligosaccharide.





## 5.6 Ligand geometry [i](#)

4 ligands are modelled in this entry.

In the following table, the Counts columns list the number of bonds (or angles) for which Mogul statistics could be retrieved, the number of bonds (or angles) that are observed in the model and the number of bonds (or angles) that are defined in the Chemical Component Dictionary. The Link column lists molecule types, if any, to which the group is linked. The Z score for a bond length (or angle) is the number of standard deviations the observed value is removed from the expected value. A bond length (or angle) with  $|Z| > 2$  is considered an outlier worth inspection. RMSZ is the root-mean-square of all Z scores of the bond lengths (or angles).

Mol	Type	Chain	Res	Link	Bond lengths			Bond angles		
					Counts	RMSZ	$\# Z  > 2$	Counts	RMSZ	$\# Z  > 2$
6	PEG	A	654	-	6,6,6	0.47	0	5,5,5	0.35	0
4	B3P	A	652	-	18,18,18	0.53	0	21,23,23	1.74	2 (9%)
7	NAG	A	658	1	14,14,15	0.46	0	17,19,21	1.56	4 (23%)
5	PG4	A	653	-	12,12,12	0.46	0	11,11,11	0.51	0

In the following table, the Chirals column lists the number of chiral outliers, the number of chiral centers analysed, the number of these observed in the model and the number defined in the Chemical Component Dictionary. Similar counts are reported in the Torsion and Rings columns.

'-' means no outliers of that kind were identified.

Mol	Type	Chain	Res	Link	Chirals	Torsions	Rings
6	PEG	A	654	-	-	1/4/4/4	-
4	B3P	A	652	-	-	3/28/28/28	-
7	NAG	A	658	1	-	2/6/23/26	0/1/1/1
5	PG4	A	653	-	-	2/10/10/10	-

There are no bond length outliers.

All (6) bond angle outliers are listed below:

Mol	Chain	Res	Type	Atoms	Z	Observed(°)	Ideal(°)
4	A	652	B3P	C3-N1-C4	5.33	123.64	116.08
4	A	652	B3P	C2-N2-C8	5.30	123.59	116.08
7	A	658	NAG	C8-C7-N2	3.22	121.55	116.10
7	A	658	NAG	C2-N2-C7	3.11	127.33	122.90
7	A	658	NAG	C3-C4-C5	-2.22	106.28	110.24
7	A	658	NAG	C1-C2-N2	-2.21	106.71	110.49

There are no chirality outliers.

All (8) torsion outliers are listed below:

Mol	Chain	Res	Type	Atoms
7	A	658	NAG	C8-C7-N2-C2
7	A	658	NAG	O7-C7-N2-C2
4	A	652	B3P	C2-C1-C3-N1
5	A	653	PG4	O1-C1-C2-O2
4	A	652	B3P	C1-C3-N1-C4
5	A	653	PG4	C6-C5-O3-C4
6	A	654	PEG	C4-C3-O2-C2
4	A	652	B3P	C6-C4-C5-O4

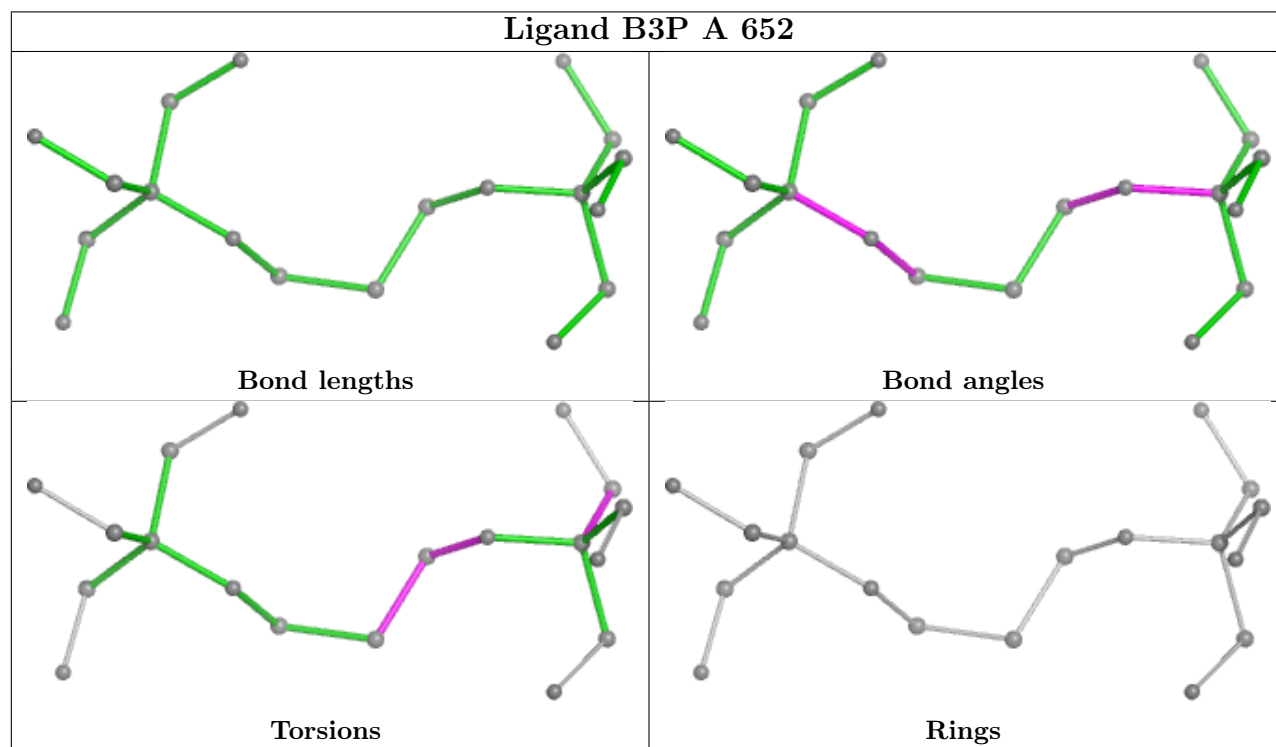
There are no ring outliers.

No monomer is involved in short contacts.

The following is a two-dimensional graphical depiction of Mogul quality analysis of bond lengths, bond angles, torsion angles, and ring geometry for all instances of the Ligand of Interest. In addition, ligands with molecular weight > 250 and outliers as shown on the validation Tables will also be included. For torsion angles, if less than 5% of the Mogul distribution of torsion angles is within 10 degrees of the torsion angle in question, then that torsion angle is considered an outlier. Any bond that is central to one or more torsion angles identified as an outlier by Mogul will be highlighted in the graph. For rings, the root-mean-square deviation (RMSD) between the ring in question and similar rings identified by Mogul is calculated over all ring torsion angles. If the



average RMSD is greater than 60 degrees and the minimal RMSD between the ring in question and any Mogul-identified rings is also greater than 60 degrees, then that ring is considered an outlier. The outliers are highlighted in purple. The color gray indicates Mogul did not find sufficient equivalents in the CSD to analyse the geometry.



## 5.7 Other polymers [i](#)

There are no such residues in this entry.

## 5.8 Polymer linkage issues [i](#)

There are no chain breaks in this entry.

## 6 Fit of model and data [i](#)

### 6.1 Protein, DNA and RNA chains [i](#)

In the following table, the column labelled ‘#RSRZ> 2’ contains the number (and percentage) of RSRZ outliers, followed by percent RSRZ outliers for the chain as percentile scores relative to all X-ray entries and entries of similar resolution. The OWAB column contains the minimum, median, 95<sup>th</sup> percentile and maximum values of the occupancy-weighted average B-factor per residue. The column labelled ‘Q< 0.9’ lists the number of (and percentage) of residues with an average occupancy less than 0.9.

Mol	Chain	Analysed	<RSRZ>	#RSRZ>2	OWAB(Å <sup>2</sup> )	Q<0.9
1	A	585/594 (98%)	-0.35	6 (1%) 79 78	14, 35, 55, 84	2 (0%)

All (6) RSRZ outliers are listed below:

Mol	Chain	Res	Type	RSRZ
1	A	100	VAL	4.8
1	A	274	GLN	3.0
1	A	97	SER	2.9
1	A	275	ALA	2.9
1	A	101	PHE	2.5
1	A	476[A]	LYS	2.4

### 6.2 Non-standard residues in protein, DNA, RNA chains [i](#)

There are no non-standard protein/DNA/RNA residues in this entry.

### 6.3 Carbohydrates [i](#)

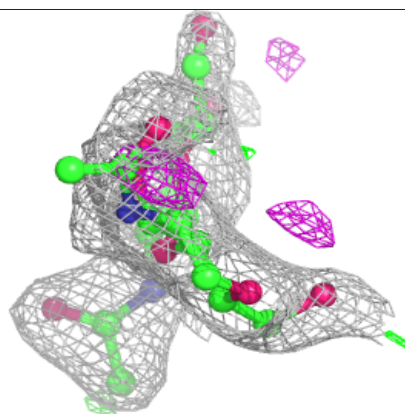
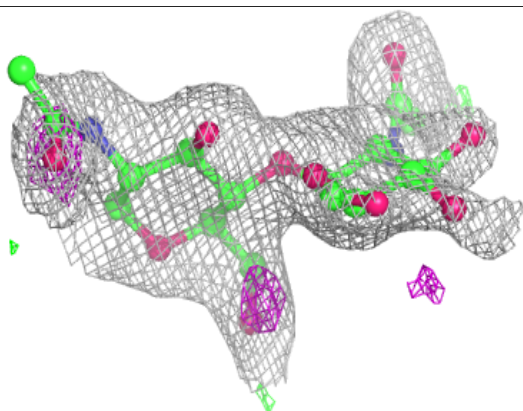
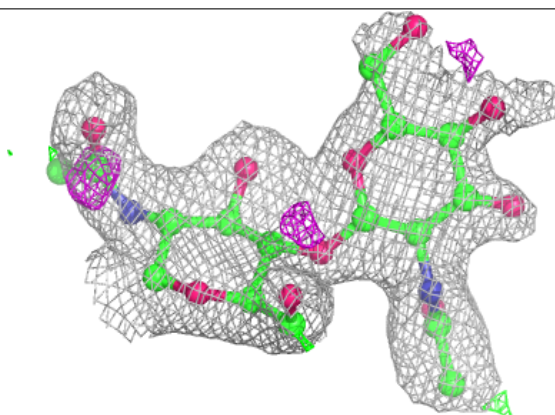
In the following table, the Atoms column lists the number of modelled atoms in the group and the number defined in the chemical component dictionary. The B-factors column lists the minimum, median, 95<sup>th</sup> percentile and maximum values of B factors of atoms in the group. The column labelled ‘Q< 0.9’ lists the number of atoms with occupancy less than 0.9.

Mol	Type	Chain	Res	Atoms	RSCC	RSR	B-factors(Å <sup>2</sup> )	Q<0.9
2	NAG	B	2	14/15	0.77	0.12	54,62,69,71	0
3	BMA	C	3	11/12	0.82	0.12	53,56,61,65	0
2	NAG	B	1	14/15	0.92	0.09	40,47,53,54	0
3	NAG	C	2	14/15	0.93	0.08	32,36,45,46	0
3	NAG	C	1	14/15	0.97	0.05	24,26,29,30	0

The following is a graphical depiction of the model fit to experimental electron density for oligosaccharide. Each fit is shown from different orientation to approximate a three-dimensional view.

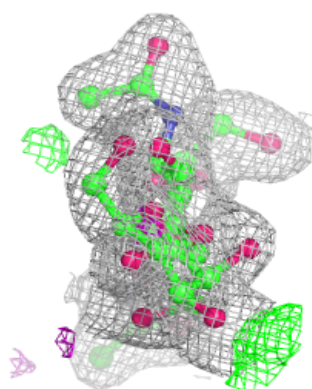
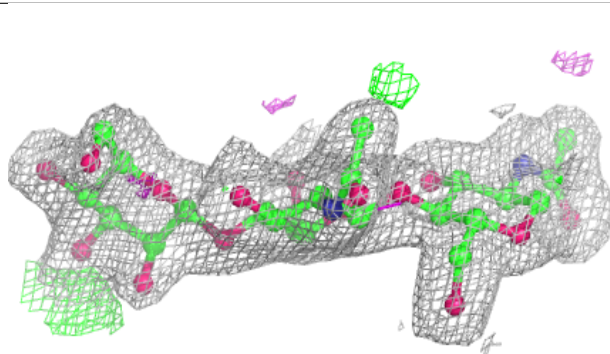
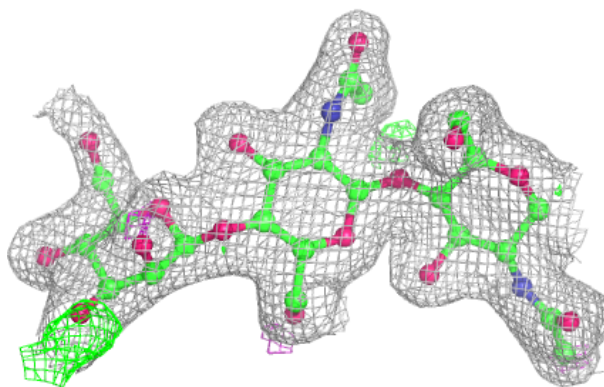
**Electron density around Chain B:**

$2mF_o-DF_c$  (at 0.7 rmsd) in gray  
 $mF_o-DF_c$  (at 3 rmsd) in purple (negative)  
and green (positive)



**Electron density around Chain C:**

$2mF_o-DF_c$  (at 0.7 rmsd) in gray  
 $mF_o-DF_c$  (at 3 rmsd) in purple (negative)  
and green (positive)

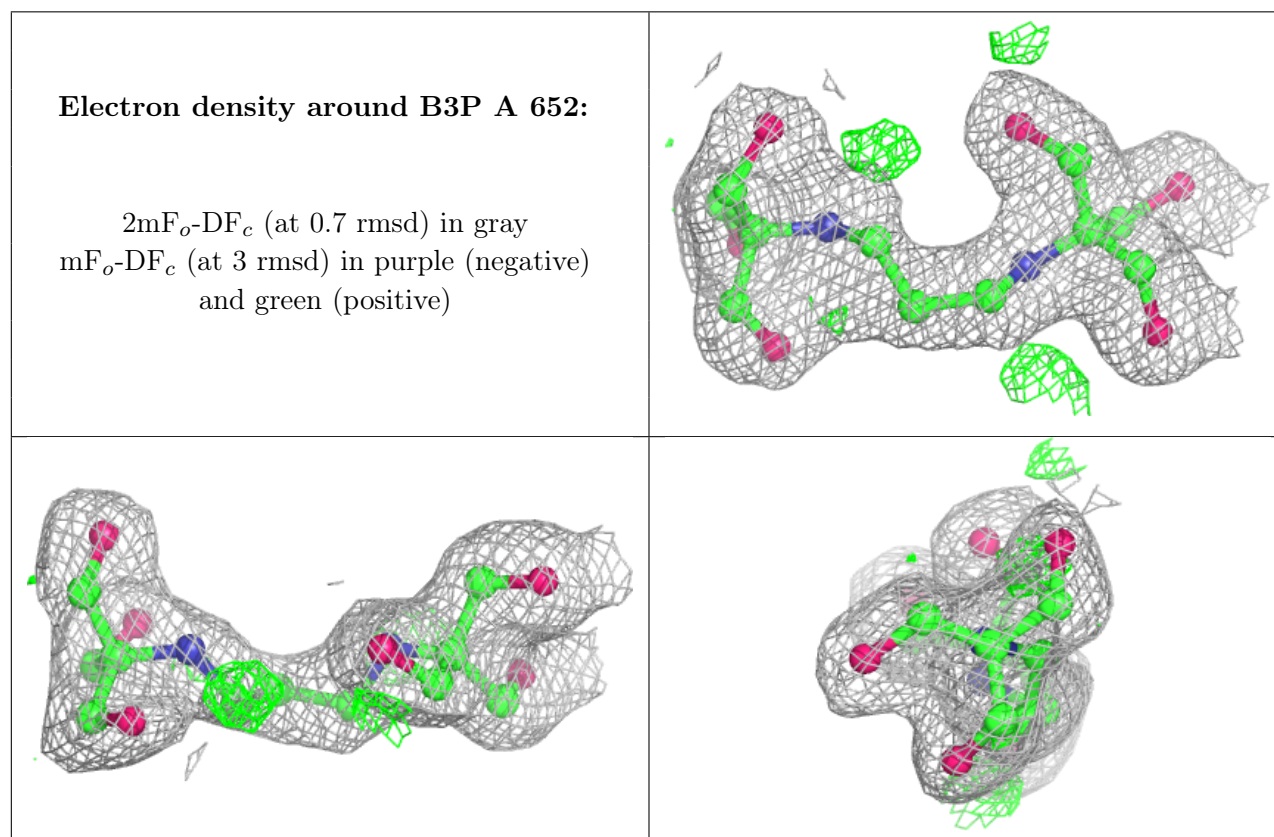


## 6.4 Ligands [i](#)

In the following table, the Atoms column lists the number of modelled atoms in the group and the number defined in the chemical component dictionary. The B-factors column lists the minimum, median, 95<sup>th</sup> percentile and maximum values of B factors of atoms in the group. The column labelled 'Q<0.9' lists the number of atoms with occupancy less than 0.9.

Mol	Type	Chain	Res	Atoms	RSCC	RSR	B-factors(Å <sup>2</sup> )	Q<0.9
6	PEG	A	654	7/7	0.88	0.12	56,57,58,58	0
5	PG4	A	653	13/13	0.92	0.10	39,43,49,50	0
7	NAG	A	658	14/15	0.92	0.08	35,39,41,48	0
4	B3P	A	652	19/19	0.95	0.09	31,37,45,46	0

The following is a graphical depiction of the model fit to experimental electron density of all instances of the Ligand of Interest. In addition, ligands with molecular weight > 250 and outliers as shown on the geometry validation Tables will also be included. Each fit is shown from different orientation to approximate a three-dimensional view.



## 6.5 Other polymers [i](#)

There are no such residues in this entry.