



wwPDB X-ray Structure Validation Summary Report ⓘ

Jun 12, 2024 – 03:05 PM EDT

PDB ID : 3FAA
Title : Crystal structure of TGFbRI complexed with a 2-aminoimidazole inhibitor
Authors : Boriack-Sjodin, P.A.; Fitch, C.
Deposited on : 2008-11-16
Resolution : 3.35 Å(reported)

This is a wwPDB X-ray Structure Validation Summary Report for a publicly released PDB entry.

We welcome your comments at validation@mail.wwpdb.org

A user guide is available at

<https://www.wwpdb.org/validation/2017/XrayValidationReportHelp>

with specific help available everywhere you see the ⓘ symbol.

The types of validation reports are described at

<http://www.wwpdb.org/validation/2017/FAQs#types>.

The following versions of software and data (see [references ⓘ](#)) were used in the production of this report:

MolProbity	:	4.02b-467
Mogul	:	2022.3.0, CSD as543be (2022)
Xtriage (Phenix)	:	1.20.1
EDS	:	2.36.2
buster-report	:	1.1.7 (2018)
Percentile statistics	:	20191225.v01 (using entries in the PDB archive December 25th 2019)
Refmac	:	5.8.0158
CCP4	:	7.0.044 (Gargrove)
Ideal geometry (proteins)	:	Engh & Huber (2001)
Ideal geometry (DNA, RNA)	:	Parkinson et al. (1996)
Validation Pipeline (wwPDB-VP)	:	2.36.2

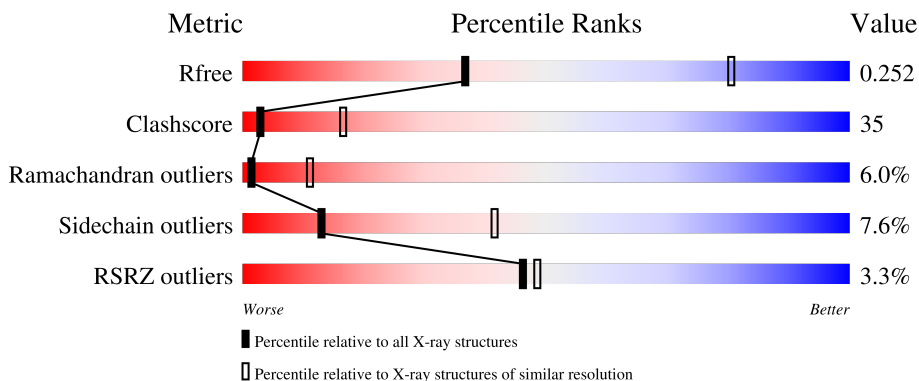
1 Overall quality at a glance

The following experimental techniques were used to determine the structure:

X-RAY DIFFRACTION

The reported resolution of this entry is 3.35 Å.

Percentile scores (ranging between 0-100) for global validation metrics of the entry are shown in the following graphic. The table shows the number of entries on which the scores are based.



Metric	Whole archive (#Entries)	Similar resolution (#Entries, resolution range(Å))
R_{free}	130704	1558 (3.42-3.30)
Clashscore	141614	1627 (3.42-3.30)
Ramachandran outliers	138981	1599 (3.42-3.30)
Sidechain outliers	138945	1598 (3.42-3.30)
RSRZ outliers	127900	1507 (3.42-3.30)

The table below summarises the geometric issues observed across the polymeric chains and their fit to the electron density. The red, orange, yellow and green segments of the lower bar indicate the fraction of residues that contain outliers for ≥ 3 , 2, 1 and 0 types of geometric quality criteria respectively. A grey segment represents the fraction of residues that are not modelled. The numeric value for each fraction is indicated below the corresponding segment, with a dot representing fractions $\leq 5\%$. The upper red bar (where present) indicates the fraction of residues that have poor fit to the electron density. The numeric value is given above the bar.

Mol	Chain	Length	Quality of chain
1	A	342	<div> <div>3%</div> <div>44%</div> <div>45%</div> <div>7%</div> <div>.</div> </div>
1	B	342	<div> <div>50%</div> <div>36%</div> <div>8%</div> <div>5%</div> </div>
1	C	342	<div> <div>12%</div> <div>32%</div> <div>56%</div> <div>8%</div> <div>.</div> </div>
1	D	342	<div> <div>%</div> <div>45%</div> <div>45%</div> <div>6%</div> <div>.</div> </div>
1	E	342	<div> <div>%</div> <div>46%</div> <div>43%</div> <div>7%</div> <div>.</div> </div>

The following table lists non-polymeric compounds, carbohydrate monomers and non-standard residues in protein, DNA, RNA chains that are outliers for geometric or electron-density-fit criteria:

Mol	Type	Chain	Res	Chirality	Geometry	Clashes	Electron density
3	PO4	A	9	-	-	X	-
3	PO4	D	13	-	-	X	-
3	PO4	E	2	-	-	X	-

2 Entry composition [i](#)

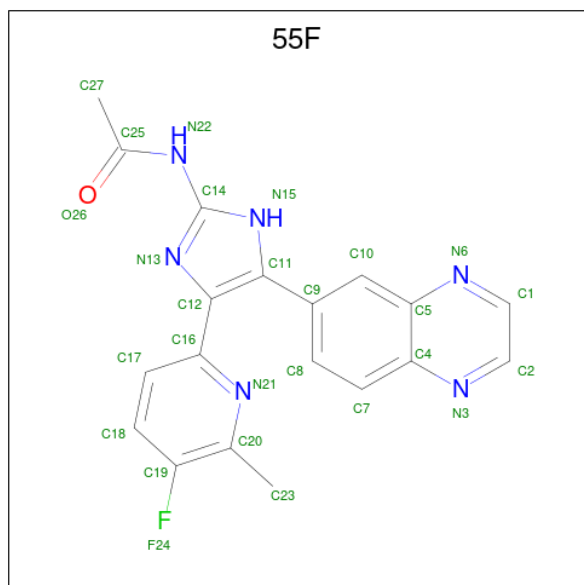
There are 3 unique types of molecules in this entry. The entry contains 13294 atoms, of which 0 are hydrogens and 0 are deuteriums.

In the tables below, the ZeroOcc column contains the number of atoms modelled with zero occupancy, the AltConf column contains the number of residues with at least one atom in alternate conformation and the Trace column contains the number of residues modelled with at most 2 atoms.

- Molecule 1 is a protein called TGF-beta receptor type-1.

Mol	Chain	Residues	Atoms					ZeroOcc	AltConf	Trace
1	A	328	Total	C	N	O	S	0	0	0
			2617	1650	469	482	16			
1	B	324	Total	C	N	O	S	0	0	0
			2590	1636	463	475	16			
1	C	330	Total	C	N	O	S	0	0	0
			2629	1658	471	484	16			
1	D	330	Total	C	N	O	S	0	0	0
			2629	1658	471	484	16			
1	E	330	Total	C	N	O	S	0	0	0
			2629	1658	471	484	16			

- Molecule 2 is N-[4-(5-fluoro-6-methylpyridin-2-yl)-5-quinoxalin-6-yl-1H-imidazol-2-yl]acetamide (three-letter code: 55F) (formula: C₁₉H₁₅FN₆O).



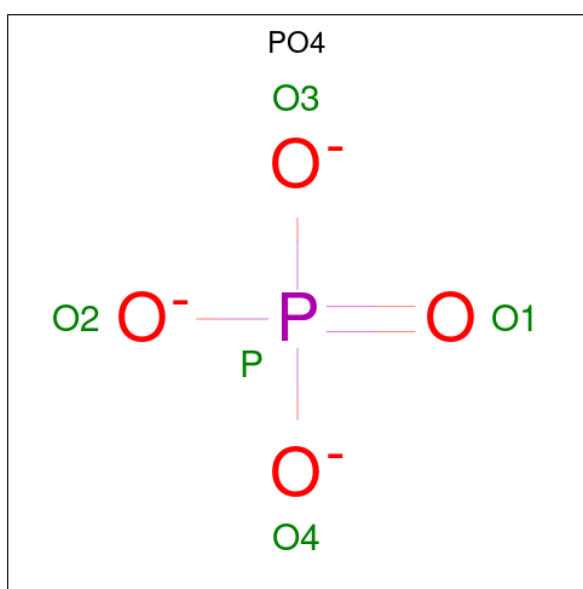
Mol	Chain	Residues	Atoms					ZeroOcc	AltConf
2	A	1	Total	C	F	N	O	0	0
			27	19	1	6	1		

Continued on next page...

Continued from previous page...

Mol	Chain	Residues	Atoms					ZeroOcc	AltConf
2	B	1	Total	C	F	N	O	0	0
			27	19	1	6	1		
2	C	1	Total	C	F	N	O	0	0
			27	19	1	6	1		
2	D	1	Total	C	F	N	O	0	0
			27	19	1	6	1		
2	E	1	Total	C	F	N	O	0	0
			27	19	1	6	1		

- Molecule 3 is PHOSPHATE ION (three-letter code: PO4) (formula: O₄P).



Mol	Chain	Residues	Atoms			ZeroOcc	AltConf
3	A	1	Total	O	P	0	0
			5	4	1		
3	A	1	Total	O	P	0	0
			5	4	1		
3	A	1	Total	O	P	0	0
			5	4	1		
3	B	1	Total	O	P	0	0
			5	4	1		
3	B	1	Total	O	P	0	0
			5	4	1		
3	B	1	Total	O	P	0	0
			5	4	1		
3	C	1	Total	O	P	0	0
			5	4	1		

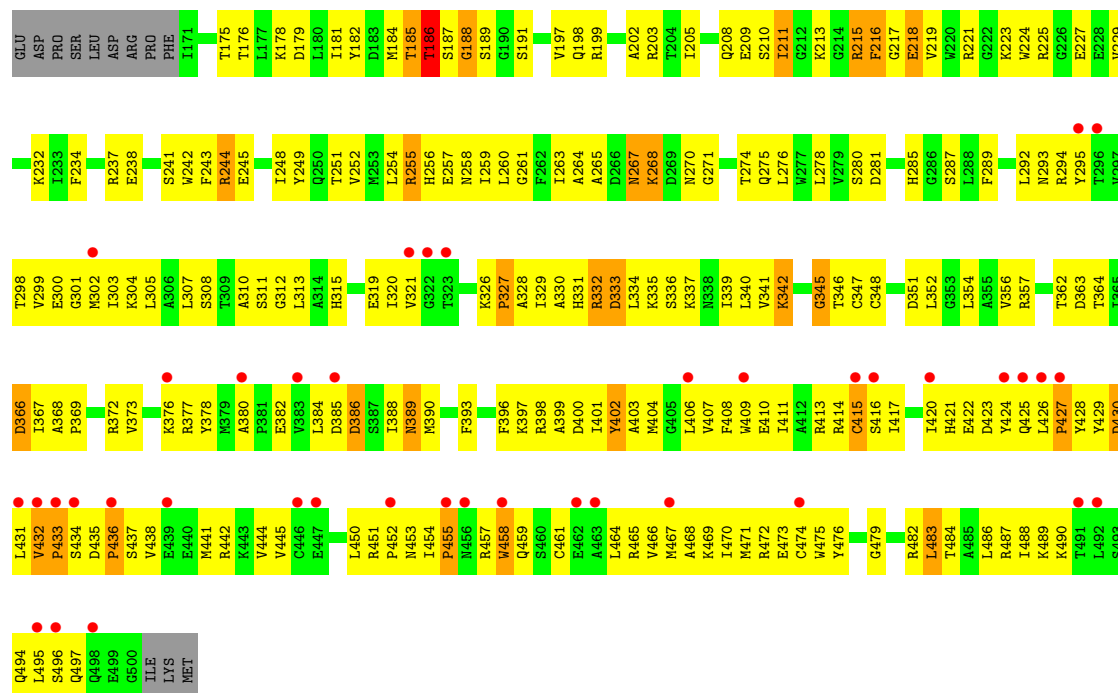
Continued on next page...

Continued from previous page...

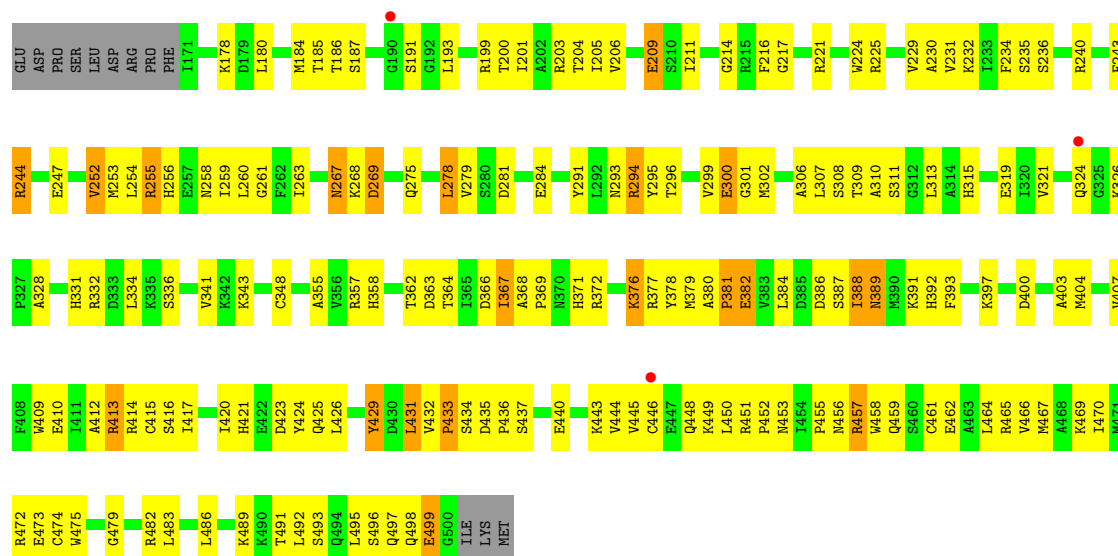
Mol	Chain	Residues	Atoms			ZeroOcc	AltConf
3	D	1	Total	O	P	0	0
			5	4	1		
3	D	1	Total	O	P	0	0
			5	4	1		
3	D	1	Total	O	P	0	0
			5	4	1		
3	E	1	Total	O	P	0	0
			5	4	1		
3	E	1	Total	O	P	0	0
			5	4	1		
3	E	1	Total	O	P	0	0
			5	4	1		



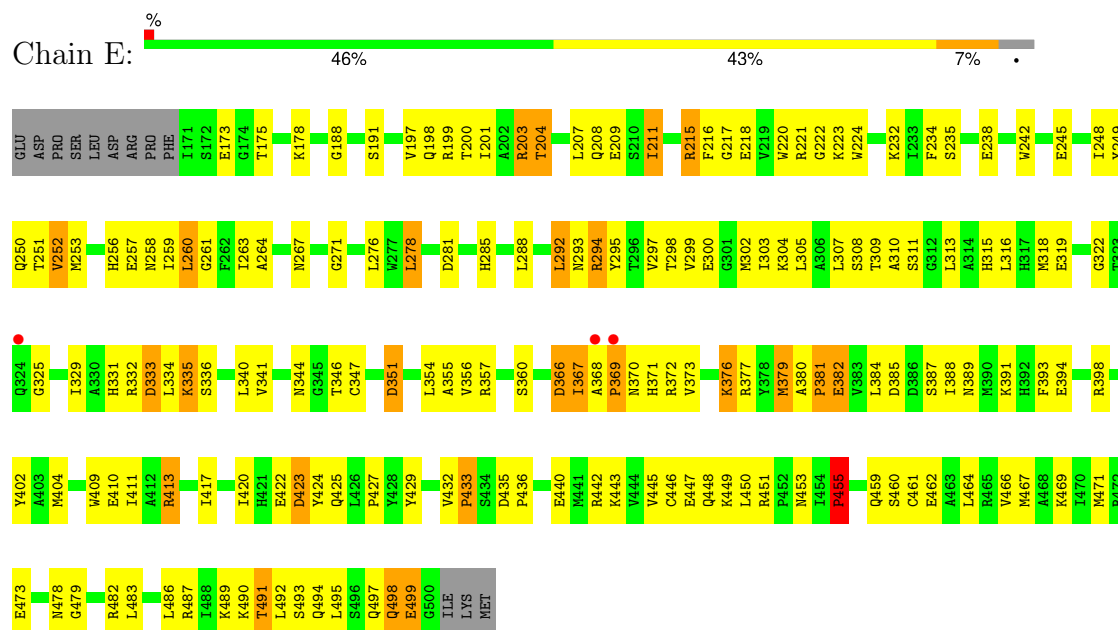
• Molecule 1: TGF-beta receptor type-1



• Molecule 1: TGF-beta receptor type-1



• Molecule 1: TGF-beta receptor type-1



4 Data and refinement statistics

Property	Value	Source
Space group	C 2 2 21	Depositor
Cell constants a, b, c, α , β , γ	174.86Å 248.85Å 138.63Å 90.00° 90.00° 90.00°	Depositor
Resolution (Å)	35.00 – 3.35 47.69 – 3.19	Depositor EDS
% Data completeness (in resolution range)	99.8 (35.00-3.35) 98.4 (47.69-3.19)	Depositor EDS
R_{merge}	0.13	Depositor
R_{sym}	(Not available)	Depositor
$\langle I/\sigma(I) \rangle$ ¹	2.09 (at 3.19Å)	Xtriage
Refinement program	CNS	Depositor
R, R_{free}	0.228 , 0.271 0.206 , 0.252	Depositor DCC
R_{free} test set	2477 reflections (4.98%)	wwPDB-VP
Wilson B-factor (Å ²)	82.5	Xtriage
Anisotropy	0.285	Xtriage
Bulk solvent k_{sol} (e/Å ³), B_{sol} (Å ²)	0.33 , 71.5	EDS
L-test for twinning ²	$\langle L \rangle = 0.49$, $\langle L^2 \rangle = 0.32$	Xtriage
Estimated twinning fraction	No twinning to report.	Xtriage
F_o, F_c correlation	0.93	EDS
Total number of atoms	13294	wwPDB-VP
Average B, all atoms (Å ²)	71.0	wwPDB-VP

Xtriage's analysis on translational NCS is as follows: *The largest off-origin peak in the Patterson function is 2.78% of the height of the origin peak. No significant pseudotranslation is detected.*

¹Intensities estimated from amplitudes.

²Theoretical values of $\langle |L| \rangle$, $\langle L^2 \rangle$ for acentric reflections are 0.5, 0.333 respectively for untwinned datasets, and 0.375, 0.2 for perfectly twinned datasets.

5 Model quality [i](#)

5.1 Standard geometry [i](#)

Bond lengths and bond angles in the following residue types are not validated in this section: 55F, PO4

The Z score for a bond length (or angle) is the number of standard deviations the observed value is removed from the expected value. A bond length (or angle) with $|Z| > 5$ is considered an outlier worth inspection. RMSZ is the root-mean-square of all Z scores of the bond lengths (or angles).

Mol	Chain	Bond lengths		Bond angles	
		RMSZ	# Z >5	RMSZ	# Z >5
1	A	0.36	0/2668	0.62	1/3600 (0.0%)
1	B	0.46	0/2640	0.66	0/3560
1	C	0.37	0/2682	0.64	0/3622
1	D	0.44	0/2682	0.67	0/3622
1	E	0.48	0/2682	0.70	0/3622
All	All	0.42	0/13354	0.66	1/18026 (0.0%)

There are no bond length outliers.

All (1) bond angle outliers are listed below:

Mol	Chain	Res	Type	Atoms	Z	Observed(°)	Ideal(°)
1	A	268	LYS	N-CA-C	5.35	125.44	111.00

There are no chirality outliers.

There are no planarity outliers.

5.2 Too-close contacts [i](#)

In the following table, the Non-H and H(model) columns list the number of non-hydrogen atoms and hydrogen atoms in the chain respectively. The H(added) column lists the number of hydrogen atoms added and optimized by MolProbity. The Clashes column lists the number of clashes within the asymmetric unit, whereas Symm-Clashes lists symmetry-related clashes.

Mol	Chain	Non-H	H(model)	H(added)	Clashes	Symm-Clashes
1	A	2617	0	2618	189	0
1	B	2590	0	2595	150	0
1	C	2629	0	2631	259	0
1	D	2629	0	2631	165	0
1	E	2629	0	2631	167	0

Continued on next page...

Continued from previous page...

Mol	Chain	Non-H	H(model)	H(added)	Clashes	Symm-Clashes
2	A	27	0	15	1	0
2	B	27	0	15	2	0
2	C	27	0	15	1	0
2	D	27	0	15	0	0
2	E	27	0	15	2	0
3	A	15	0	0	2	0
3	B	15	0	0	1	0
3	C	5	0	0	0	0
3	D	15	0	0	2	0
3	E	15	0	0	2	0
All	All	13294	0	13181	919	0

The all-atom clashscore is defined as the number of clashes found per 1000 atoms (including hydrogen atoms). The all-atom clashscore for this structure is 35.

The worst 5 of 919 close contacts within the same asymmetric unit are listed below, sorted by their clash magnitude.

Atom-1	Atom-2	Interatomic distance (Å)	Clash overlap (Å)
1:D:417:ILE:HD11	1:D:457:ARG:HH12	1.08	1.11
1:E:367:ILE:HD13	1:E:370:ASN:HD21	1.21	1.02
1:D:367:ILE:HG13	1:D:369:PRO:HD3	1.39	1.02
1:A:417:ILE:HD11	1:A:457:ARG:HH12	1.26	0.99
1:E:256:HIS:HD2	1:E:258:ASN:H	0.99	0.98

There are no symmetry-related clashes.

5.3 Torsion angles [i](#)

5.3.1 Protein backbone [i](#)

In the following table, the Percentiles column shows the percent Ramachandran outliers of the chain as a percentile score with respect to all X-ray entries followed by that with respect to entries of similar resolution.

The Analysed column shows the number of residues for which the backbone conformation was analysed, and the total number of residues.

Mol	Chain	Analysed	Favoured	Allowed	Outliers	Percentiles
1	A	324/342 (95%)	240 (74%)	61 (19%)	23 (7%)	1 8
1	B	318/342 (93%)	259 (81%)	43 (14%)	16 (5%)	2 15

Continued on next page...

Continued from previous page...

Mol	Chain	Analysed	Favoured	Allowed	Outliers	Percentiles	
1	C	328/342 (96%)	239 (73%)	61 (19%)	28 (8%)	1	5
1	D	328/342 (96%)	266 (81%)	51 (16%)	11 (3%)	3	23
1	E	328/342 (96%)	272 (83%)	37 (11%)	19 (6%)	1	12
All	All	1626/1710 (95%)	1276 (78%)	253 (16%)	97 (6%)	1	11

5 of 97 Ramachandran outliers are listed below:

Mol	Chain	Res	Type
1	A	252	VAL
1	A	447	GLU
1	B	191	SER
1	B	252	VAL
1	B	386	ASP

5.3.2 Protein sidechains ⓘ

In the following table, the Percentiles column shows the percent sidechain outliers of the chain as a percentile score with respect to all X-ray entries followed by that with respect to entries of similar resolution.

The Analysed column shows the number of residues for which the sidechain conformation was analysed, and the total number of residues.

Mol	Chain	Analysed	Rotameric	Outliers	Percentiles	
1	A	281/294 (96%)	261 (93%)	20 (7%)	14	45
1	B	278/294 (95%)	252 (91%)	26 (9%)	8	31
1	C	282/294 (96%)	266 (94%)	16 (6%)	20	52
1	D	282/294 (96%)	259 (92%)	23 (8%)	11	38
1	E	282/294 (96%)	260 (92%)	22 (8%)	12	40
All	All	1405/1470 (96%)	1298 (92%)	107 (8%)	13	41

5 of 107 residues with a non-rotameric sidechain are listed below:

Mol	Chain	Res	Type
1	C	389	ASN
1	D	294	ARG
1	E	382	GLU
1	C	415	CYS
1	D	244	ARG

Sometimes sidechains can be flipped to improve hydrogen bonding and reduce clashes. 5 of 53 such sidechains are listed below:

Mol	Chain	Res	Type
1	D	250	GLN
1	D	389	ASN
1	E	448	GLN
1	D	256	HIS
1	D	324	GLN

5.3.3 RNA [i](#)

There are no RNA molecules in this entry.

5.4 Non-standard residues in protein, DNA, RNA chains [i](#)

There are no non-standard protein/DNA/RNA residues in this entry.

5.5 Carbohydrates [i](#)

There are no monosaccharides in this entry.

5.6 Ligand geometry [i](#)

18 ligands are modelled in this entry.

In the following table, the Counts columns list the number of bonds (or angles) for which Mogul statistics could be retrieved, the number of bonds (or angles) that are observed in the model and the number of bonds (or angles) that are defined in the Chemical Component Dictionary. The Link column lists molecule types, if any, to which the group is linked. The Z score for a bond length (or angle) is the number of standard deviations the observed value is removed from the expected value. A bond length (or angle) with $|Z| > 2$ is considered an outlier worth inspection. RMSZ is the root-mean-square of all Z scores of the bond lengths (or angles).

Mol	Type	Chain	Res	Link	Bond lengths			Bond angles		
					Counts	RMSZ	$\# Z > 2$	Counts	RMSZ	$\# Z > 2$
3	PO4	B	6	-	4,4,4	1.71	1 (25%)	6,6,6	0.48	0
3	PO4	D	13	-	4,4,4	1.69	0	6,6,6	0.50	0
3	PO4	D	14	-	4,4,4	1.82	1 (25%)	6,6,6	0.46	0
2	55F	D	601	-	26,30,30	1.84	7 (26%)	27,43,43	1.35	5 (18%)
2	55F	B	601	-	26,30,30	1.78	8 (30%)	27,43,43	1.46	5 (18%)
3	PO4	E	22	-	4,4,4	1.71	0	6,6,6	0.49	0

Mol	Type	Chain	Res	Link	Bond lengths			Bond angles		
					Counts	RMSZ	# Z > 2	Counts	RMSZ	# Z > 2
3	PO4	B	12	-	4,4,4	1.81	2 (50%)	6,6,6	0.44	0
2	55F	A	601	-	26,30,30	1.77	6 (23%)	27,43,43	1.36	5 (18%)
3	PO4	D	24	-	4,4,4	1.74	1 (25%)	6,6,6	0.46	0
3	PO4	E	1	-	4,4,4	1.74	1 (25%)	6,6,6	0.49	0
2	55F	C	601	-	26,30,30	1.73	7 (26%)	27,43,43	1.38	5 (18%)
3	PO4	A	21	-	4,4,4	1.75	1 (25%)	6,6,6	0.49	0
3	PO4	A	26	-	4,4,4	1.71	1 (25%)	6,6,6	0.47	0
3	PO4	C	10	-	4,4,4	1.63	0	6,6,6	0.48	0
3	PO4	A	9	-	4,4,4	1.67	1 (25%)	6,6,6	0.48	0
3	PO4	E	2	-	4,4,4	1.75	2 (50%)	6,6,6	0.48	0
3	PO4	B	23	-	4,4,4	1.79	2 (50%)	6,6,6	0.47	0
2	55F	E	601	-	26,30,30	1.58	7 (26%)	27,43,43	1.38	5 (18%)

In the following table, the Chirals column lists the number of chiral outliers, the number of chiral centers analysed, the number of these observed in the model and the number defined in the Chemical Component Dictionary. Similar counts are reported in the Torsion and Rings columns. '-' means no outliers of that kind were identified.

Mol	Type	Chain	Res	Link	Chirals	Torsions	Rings
2	55F	D	601	-	-	0/2/12/12	0/4/4/4
2	55F	B	601	-	-	0/2/12/12	0/4/4/4
2	55F	A	601	-	-	0/2/12/12	0/4/4/4
2	55F	C	601	-	-	0/2/12/12	0/4/4/4
2	55F	E	601	-	-	0/2/12/12	0/4/4/4

The worst 5 of 48 bond length outliers are listed below:

Mol	Chain	Res	Type	Atoms	Z	Observed(Å)	Ideal(Å)
2	A	601	55F	C20-N21	5.48	1.38	1.32
2	B	601	55F	C20-N21	5.39	1.38	1.32
2	D	601	55F	C20-N21	5.27	1.38	1.32
2	C	601	55F	C20-N21	4.84	1.38	1.32
2	E	601	55F	C20-N21	4.30	1.37	1.32

The worst 5 of 25 bond angle outliers are listed below:

Mol	Chain	Res	Type	Atoms	Z	Observed(°)	Ideal(°)
2	B	601	55F	O26-C25-N22	4.42	129.12	123.06
2	E	601	55F	O26-C25-N22	4.21	128.83	123.06

Continued on next page...

Continued from previous page...

Mol	Chain	Res	Type	Atoms	Z	Observed(°)	Ideal(°)
2	C	601	55F	O26-C25-N22	4.04	128.59	123.06
2	A	601	55F	O26-C25-N22	3.96	128.49	123.06
2	D	601	55F	O26-C25-N22	3.69	128.12	123.06

There are no chirality outliers.

There are no torsion outliers.

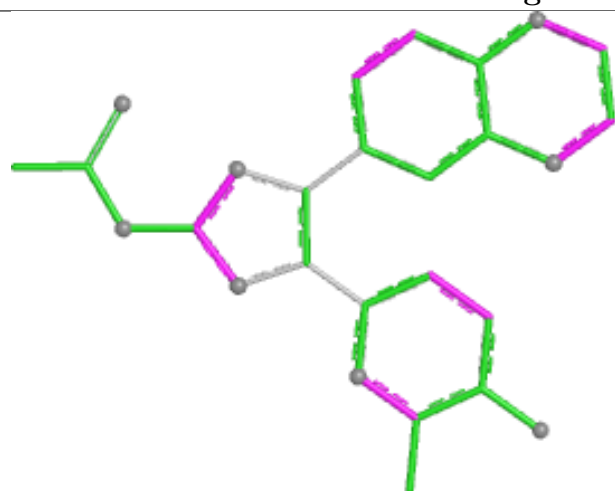
There are no ring outliers.

8 monomers are involved in 13 short contacts:

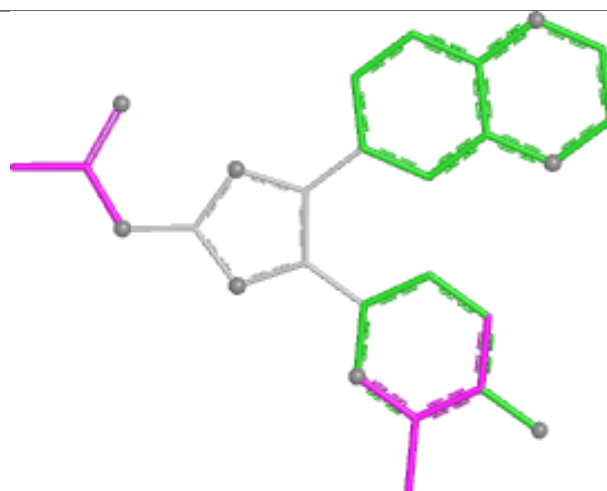
Mol	Chain	Res	Type	Clashes	Symm-Clashes
3	D	13	PO4	2	0
2	B	601	55F	2	0
2	A	601	55F	1	0
2	C	601	55F	1	0
3	A	9	PO4	2	0
3	E	2	PO4	2	0
3	B	23	PO4	1	0
2	E	601	55F	2	0

The following is a two-dimensional graphical depiction of Mogul quality analysis of bond lengths, bond angles, torsion angles, and ring geometry for all instances of the Ligand of Interest. In addition, ligands with molecular weight > 250 and outliers as shown on the validation Tables will also be included. For torsion angles, if less than 5% of the Mogul distribution of torsion angles is within 10 degrees of the torsion angle in question, then that torsion angle is considered an outlier. Any bond that is central to one or more torsion angles identified as an outlier by Mogul will be highlighted in the graph. For rings, the root-mean-square deviation (RMSD) between the ring in question and similar rings identified by Mogul is calculated over all ring torsion angles. If the average RMSD is greater than 60 degrees and the minimal RMSD between the ring in question and any Mogul-identified rings is also greater than 60 degrees, then that ring is considered an outlier. The outliers are highlighted in purple. The color gray indicates Mogul did not find sufficient equivalents in the CSD to analyse the geometry.

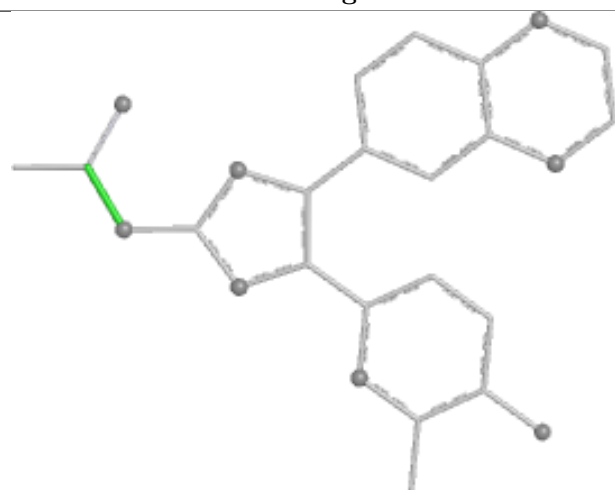
Ligand 55F D 601



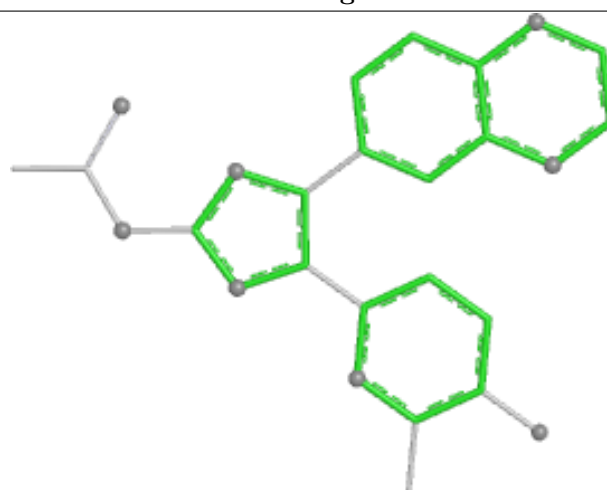
Bond lengths



Bond angles

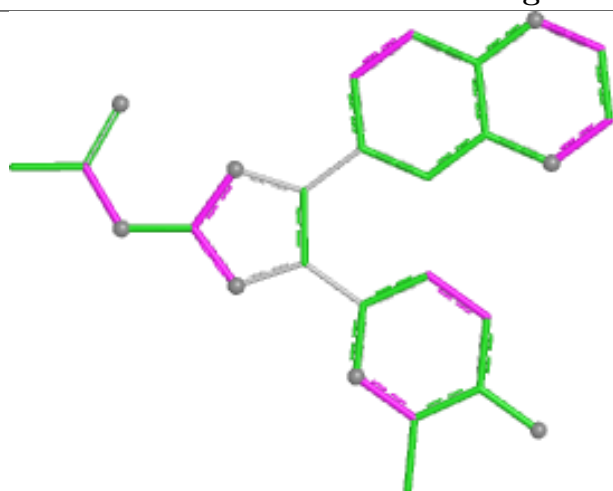


Torsions

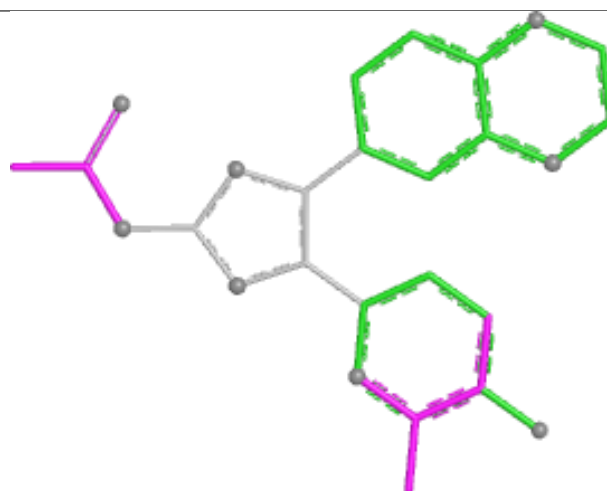


Rings

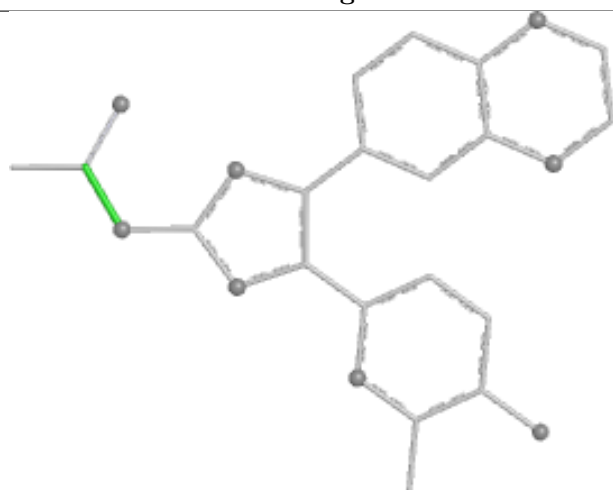
Ligand 55F B 601



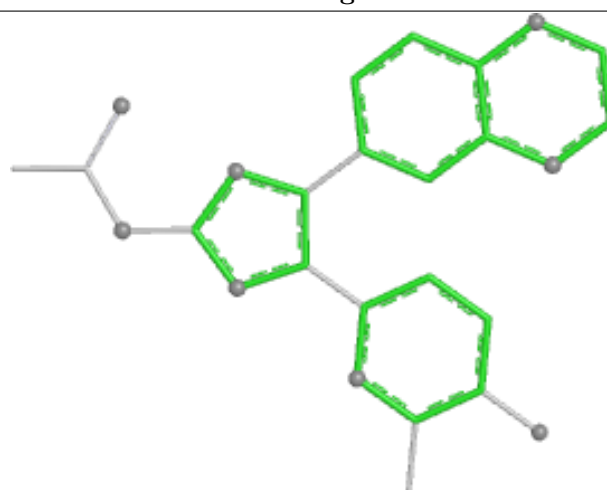
Bond lengths



Bond angles

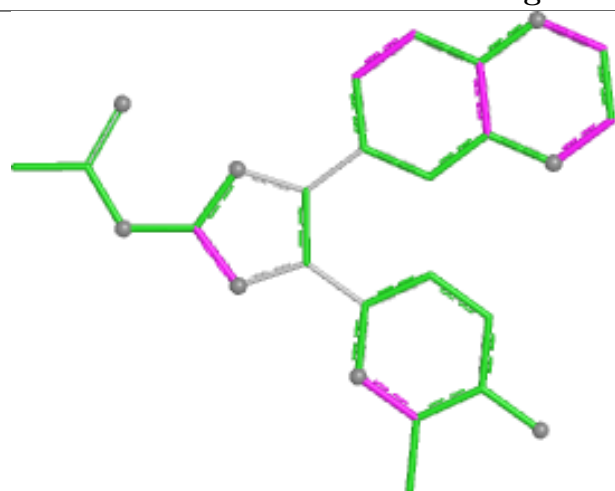


Torsions

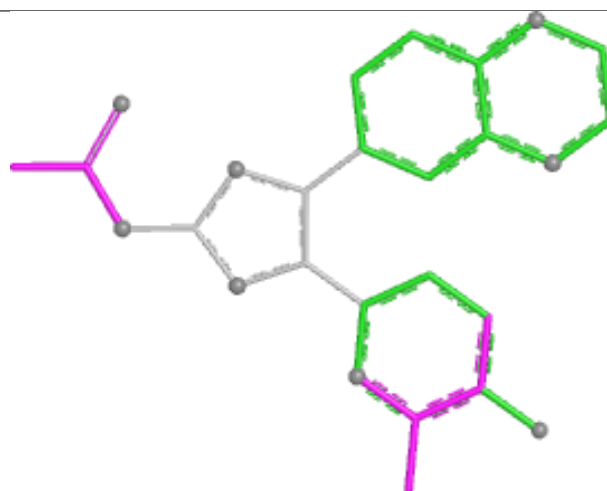


Rings

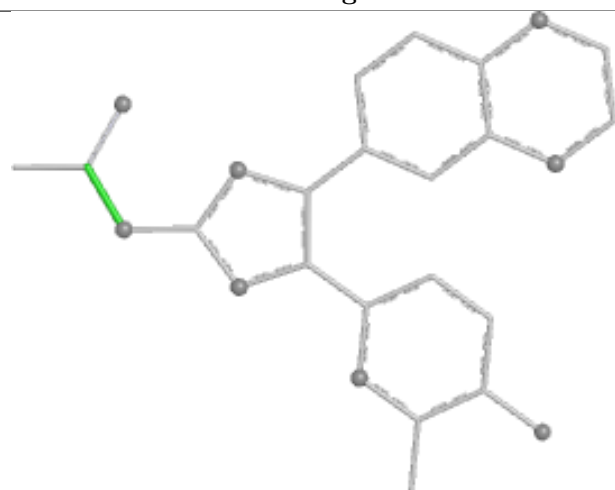
Ligand 55F A 601



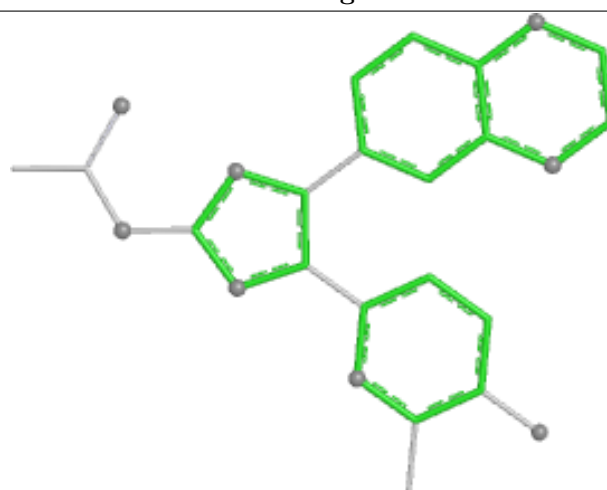
Bond lengths



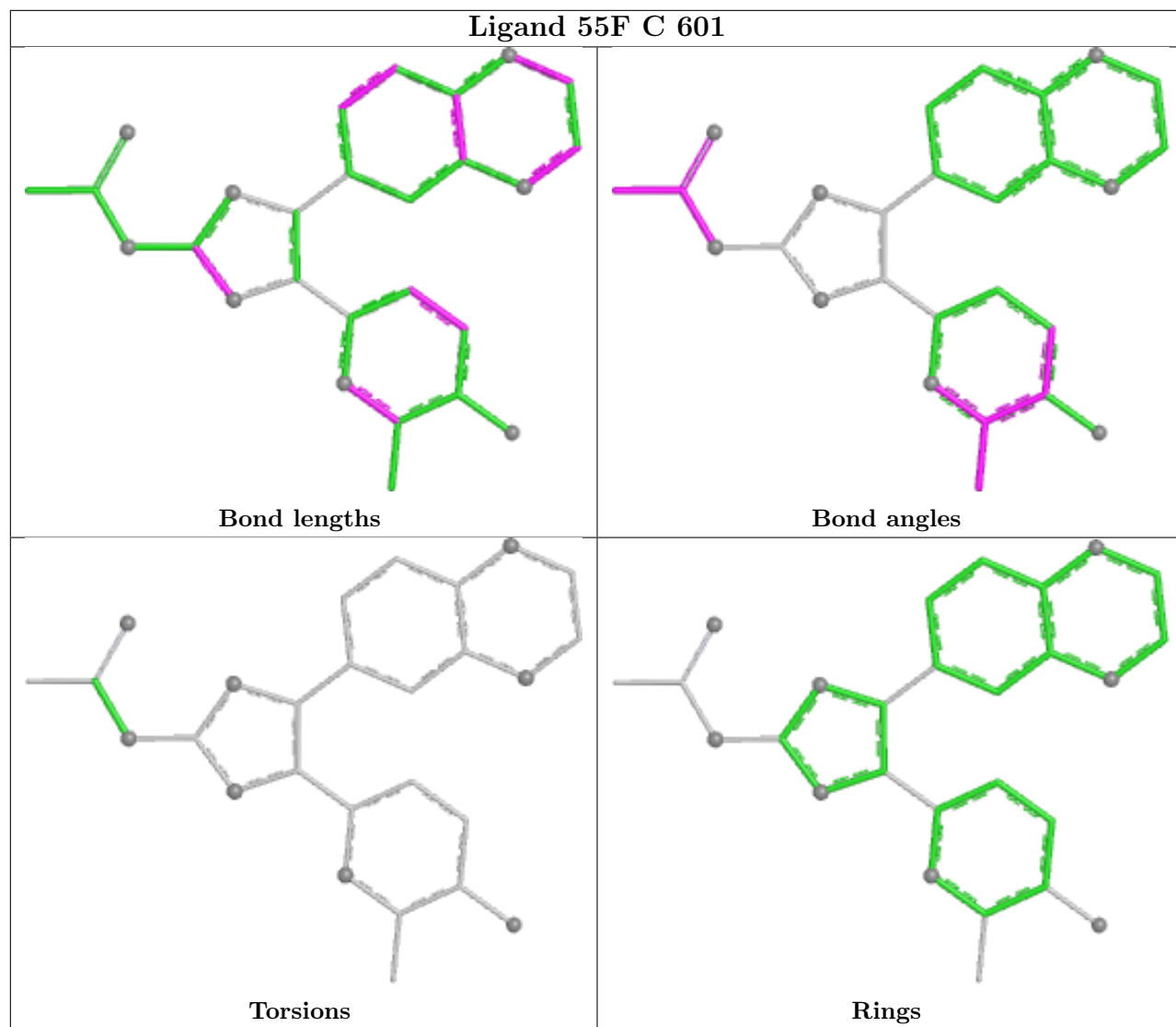
Bond angles

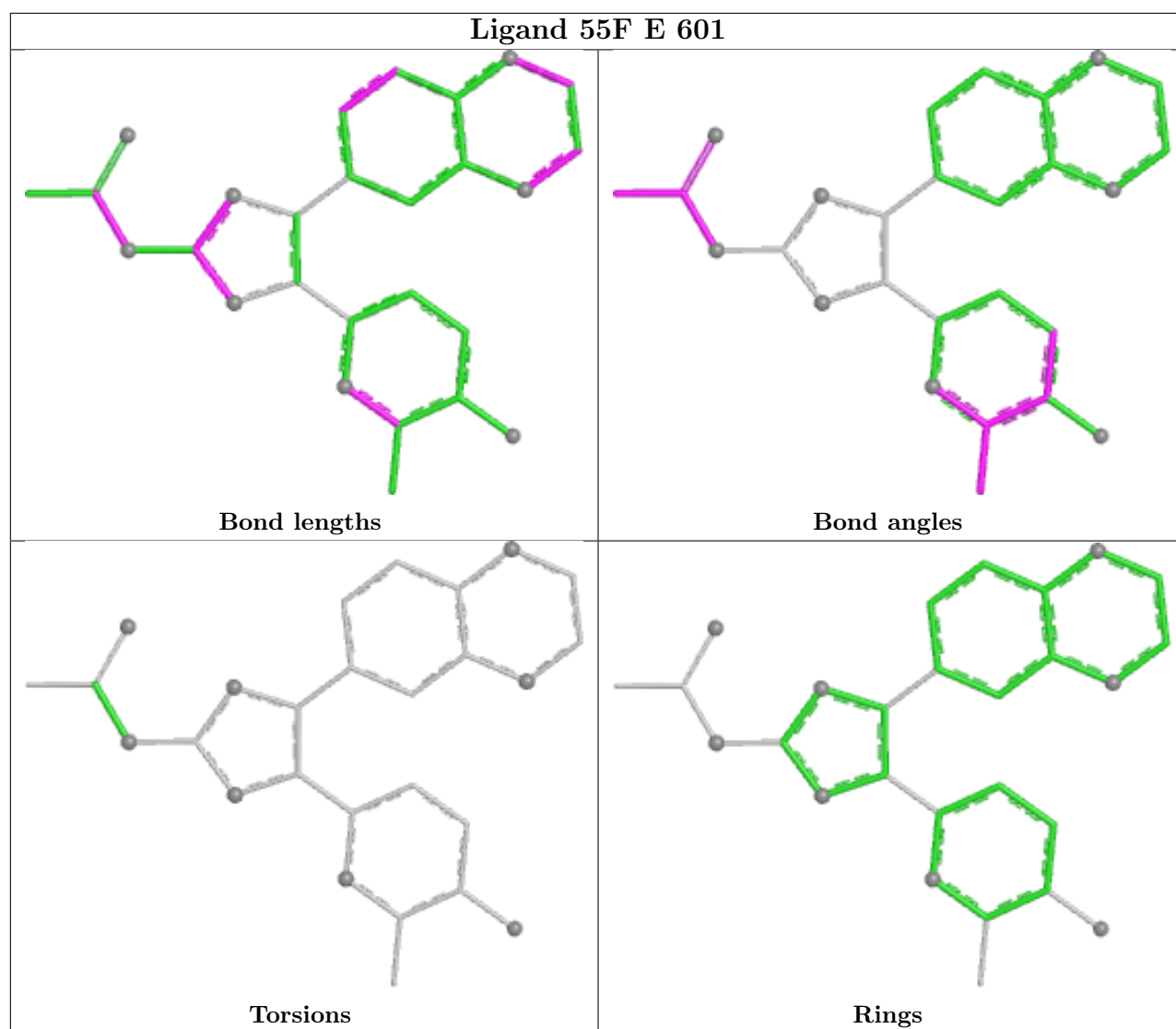


Torsions



Rings





5.7 Other polymers [i](#)

There are no such residues in this entry.

5.8 Polymer linkage issues [i](#)

There are no chain breaks in this entry.

6 Fit of model and data [i](#)

6.1 Protein, DNA and RNA chains [i](#)

In the following table, the column labelled ‘#RSRZ> 2’ contains the number (and percentage) of RSRZ outliers, followed by percent RSRZ outliers for the chain as percentile scores relative to all X-ray entries and entries of similar resolution. The OWAB column contains the minimum, median, 95th percentile and maximum values of the occupancy-weighted average B-factor per residue. The column labelled ‘Q< 0.9’ lists the number of (and percentage) of residues with an average occupancy less than 0.9.

Mol	Chain	Analysed	<RSRZ>	#RSRZ>2	OWAB(Å ²)	Q<0.9
1	A	328/342 (95%)	0.14	9 (2%) 54 57	31, 89, 131, 142	0
1	B	324/342 (94%)	-0.15	0 100 100	27, 51, 84, 105	0
1	C	330/342 (96%)	0.55	40 (12%) 4 4	28, 101, 138, 144	0
1	D	330/342 (96%)	-0.11	3 (0%) 84 87	31, 58, 97, 109	0
1	E	330/342 (96%)	-0.11	3 (0%) 84 87	26, 51, 86, 109	0
All	All	1642/1710 (96%)	0.06	55 (3%) 46 48	26, 63, 128, 144	0

The worst 5 of 55 RSRZ outliers are listed below:

Mol	Chain	Res	Type	RSRZ
1	C	491	THR	5.6
1	C	496	SER	4.9
1	C	495	LEU	4.7
1	C	322	GLY	4.4
1	E	369	PRO	4.2

6.2 Non-standard residues in protein, DNA, RNA chains [i](#)

There are no non-standard protein/DNA/RNA residues in this entry.

6.3 Carbohydrates [i](#)

There are no monosaccharides in this entry.

6.4 Ligands [i](#)

In the following table, the Atoms column lists the number of modelled atoms in the group and the number defined in the chemical component dictionary. The B-factors column lists the minimum,

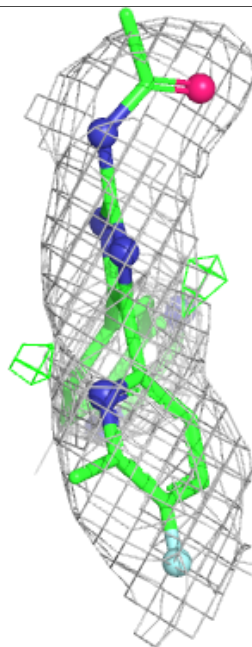
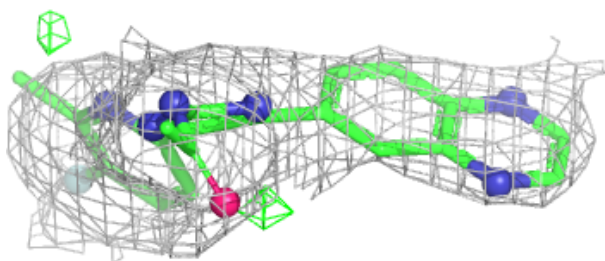
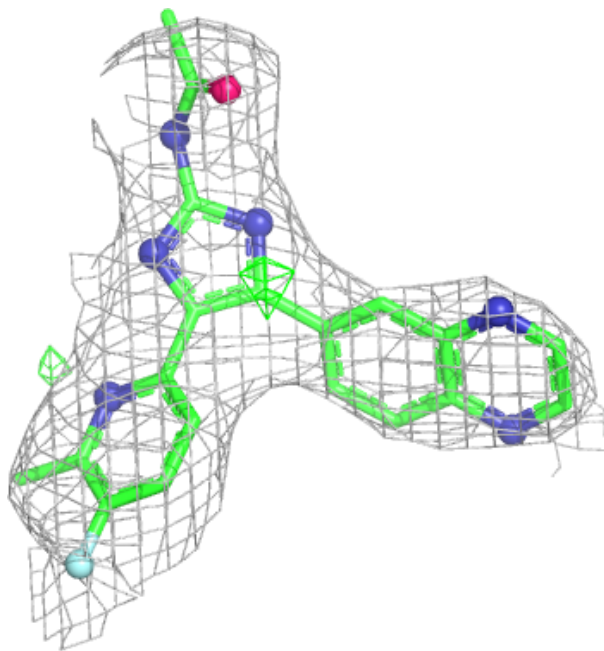
median, 95th percentile and maximum values of B factors of atoms in the group. The column labelled 'Q< 0.9' lists the number of atoms with occupancy less than 0.9.

Mol	Type	Chain	Res	Atoms	RSCC	RSR	B-factors(Å ²)	Q<0.9
3	PO4	C	10	5/5	0.87	0.30	103,104,104,105	0
3	PO4	A	9	5/5	0.88	0.17	103,103,104,104	0
3	PO4	A	21	5/5	0.91	0.20	36,36,37,38	5
2	55F	C	601	27/27	0.91	0.26	73,79,81,81	0
3	PO4	B	12	5/5	0.92	0.33	20,21,22,23	5
3	PO4	B	23	5/5	0.93	0.26	31,31,32,32	5
3	PO4	A	26	5/5	0.93	0.24	48,48,48,49	5
3	PO4	D	14	5/5	0.93	0.40	21,22,22,23	5
3	PO4	D	24	5/5	0.93	0.29	29,29,31,31	5
3	PO4	E	1	5/5	0.93	0.24	89,89,90,90	0
2	55F	A	601	27/27	0.95	0.28	46,53,65,67	0
2	55F	E	601	27/27	0.95	0.27	36,40,59,62	0
3	PO4	D	13	5/5	0.95	0.12	82,82,83,84	0
3	PO4	E	2	5/5	0.95	0.29	7,8,8,9	5
3	PO4	E	22	5/5	0.95	0.21	18,18,20,20	5
2	55F	B	601	27/27	0.96	0.23	29,39,49,52	0
2	55F	D	601	27/27	0.96	0.26	48,49,58,61	0
3	PO4	B	6	5/5	0.96	0.13	60,63,63,65	0

The following is a graphical depiction of the model fit to experimental electron density of all instances of the Ligand of Interest. In addition, ligands with molecular weight > 250 and outliers as shown on the geometry validation Tables will also be included. Each fit is shown from different orientation to approximate a three-dimensional view.

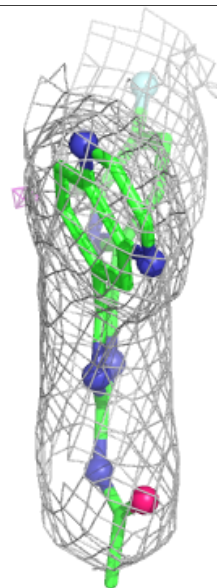
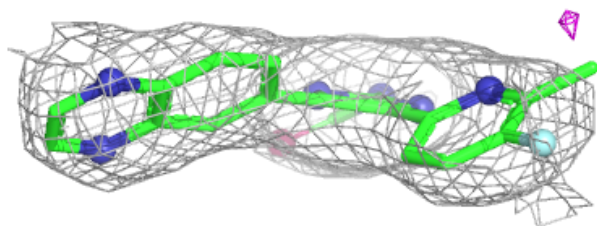
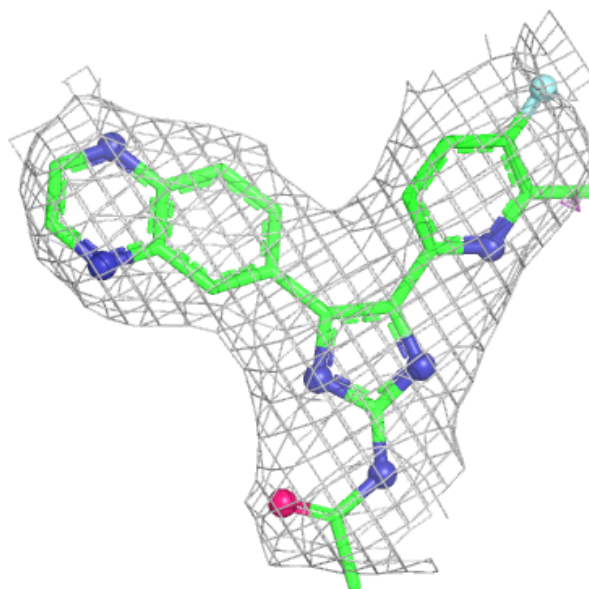
Electron density around 55F C 601:

$2mF_o-DF_c$ (at 0.7 rmsd) in gray
 mF_o-DF_c (at 3 rmsd) in purple (negative)
and green (positive)



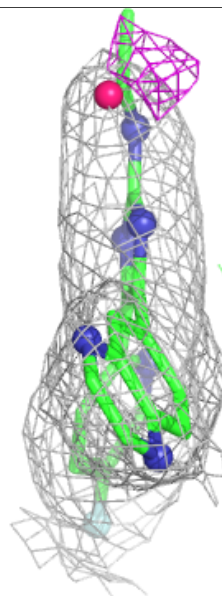
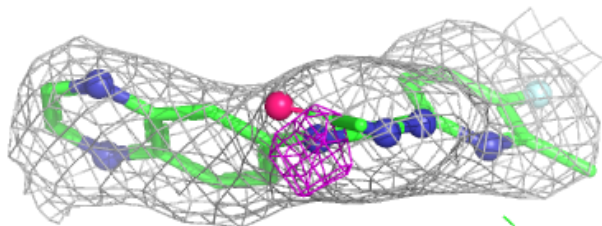
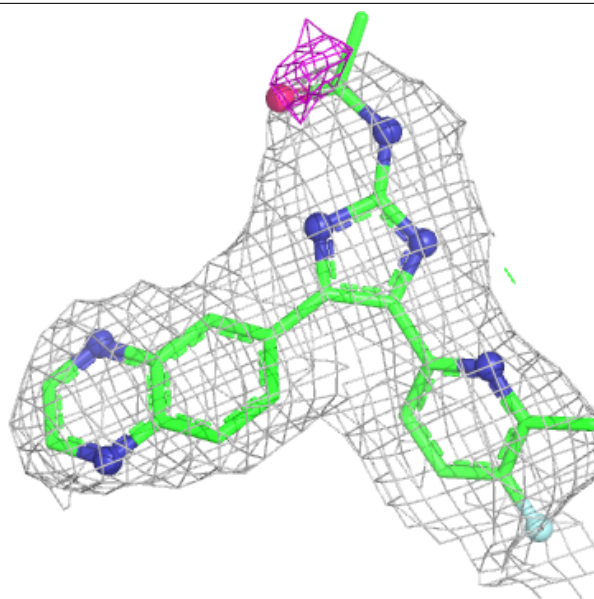
Electron density around 55F A 601:

2mF_o-DF_c (at 0.7 rmsd) in gray
mF_o-DF_c (at 3 rmsd) in purple (negative)
and green (positive)



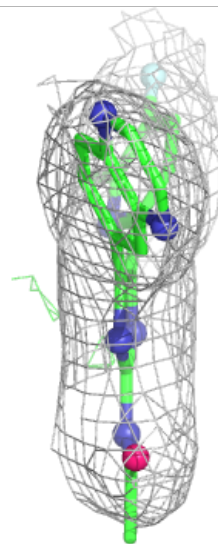
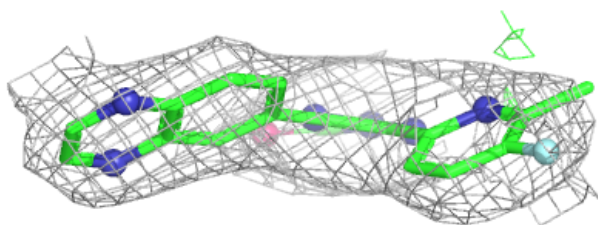
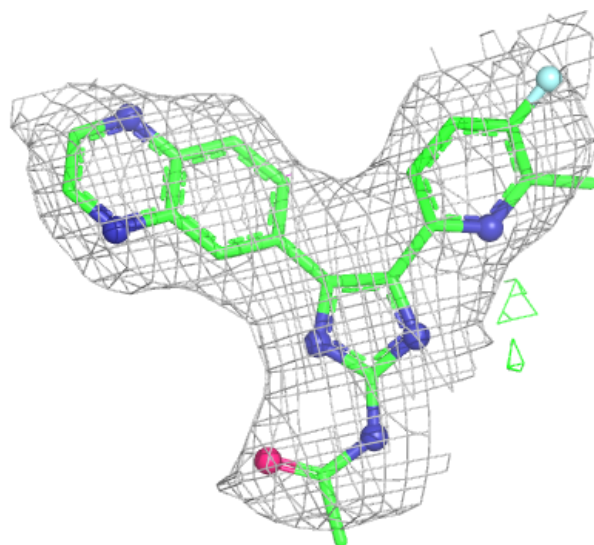
Electron density around 55F E 601:

$2mF_o-DF_c$ (at 0.7 rmsd) in gray
 mF_o-DF_c (at 3 rmsd) in purple (negative)
and green (positive)



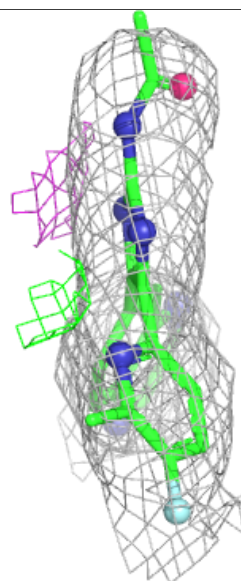
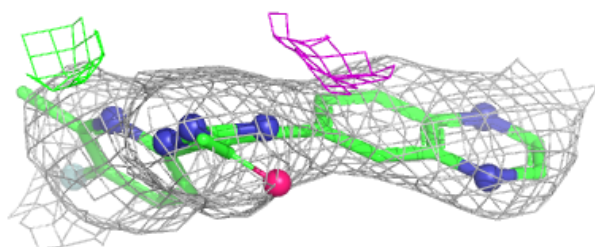
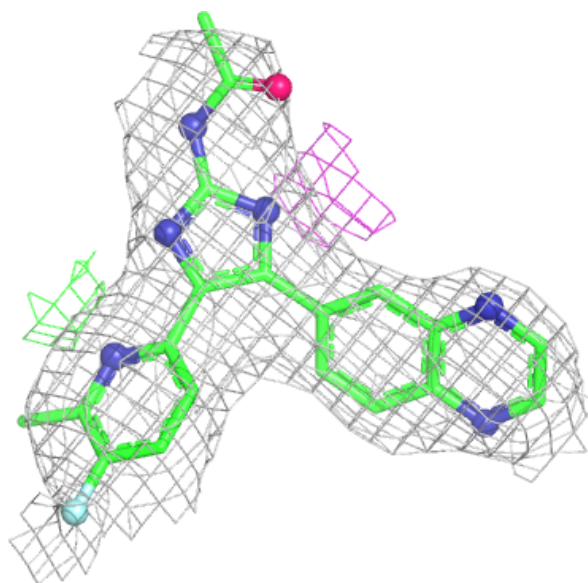
Electron density around 55F B 601:

$2mF_o-DF_c$ (at 0.7 rmsd) in gray
 mF_o-DF_c (at 3 rmsd) in purple (negative)
and green (positive)



Electron density around 55F D 601:

$2mF_o-DF_c$ (at 0.7 rmsd) in gray
 mF_o-DF_c (at 3 rmsd) in purple (negative)
and green (positive)



6.5 Other polymers ⓘ

There are no such residues in this entry.