



Full wwPDB EM Validation Report ⓘ

Nov 11, 2024 – 03:58 PM JST

PDB ID : 7F9Z
EMDB ID : EMD-31501
Title : GHRP-6-bound ghrelin receptor in complex with Gq
Authors : Wang, Y.; Zhuang, Y.; Xu, P.; Xu, H.E.; Jiang, Y.
Deposited on : 2021-07-05
Resolution : 3.20 Å(reported)

This is a Full wwPDB EM Validation Report for a publicly released PDB entry.

We welcome your comments at validation@mail.wwpdb.org

A user guide is available at

<https://www.wwpdb.org/validation/2017/EMValidationReportHelp>

with specific help available everywhere you see the ⓘ symbol.

The types of validation reports are described at

<http://www.wwpdb.org/validation/2017/FAQs#types>.

The following versions of software and data (see [references ⓘ](#)) were used in the production of this report:

EMDB validation analysis : 0.0.1.dev113
Mogul : 1.8.5 (274361), CSD as541be (2020)
MolProbity : 4.02b-467
Percentile statistics : 20231227.v01 (using entries in the PDB archive December 27th 2023)
MapQ : 1.9.13
Ideal geometry (proteins) : Engh & Huber (2001)
Ideal geometry (DNA, RNA) : Parkinson et al. (1996)
Validation Pipeline (wwPDB-VP) : 2.39

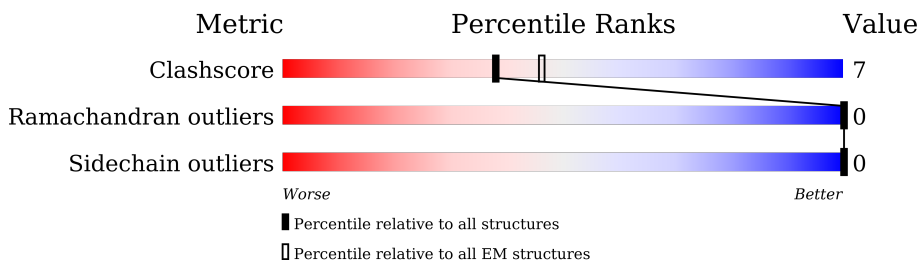
1 Overall quality at a glance

The following experimental techniques were used to determine the structure:

ELECTRON MICROSCOPY

The reported resolution of this entry is 3.20 Å.

Percentile scores (ranging between 0-100) for global validation metrics of the entry are shown in the following graphic. The table shows the number of entries on which the scores are based.



Metric	Whole archive (#Entries)	EM structures (#Entries)
Clashscore	210492	15764
Ramachandran outliers	207382	16835
Sidechain outliers	206894	16415

The table below summarises the geometric issues observed across the polymeric chains and their fit to the map. The red, orange, yellow and green segments of the bar indicate the fraction of residues that contain outliers for ≥ 3 , 2, 1 and 0 types of geometric quality criteria respectively. A grey segment represents the fraction of residues that are not modelled. The numeric value for each fraction is indicated below the corresponding segment, with a dot representing fractions $\leq 5\%$. The upper red bar (where present) indicates the fraction of residues that have poor fit to the EM map (all-atom inclusion $< 40\%$). The numeric value is given above the bar.

Mol	Chain	Length	Quality of chain
1	A	362	<div> <div>9%</div> <div>51%</div> <div>12%</div> <div>37%</div> </div>
2	B	371	<div> <div>9%</div> <div>72%</div> <div>19%</div> <div>9%</div> </div>
3	C	7	<div> <div>43%</div> <div>14%</div> <div>43%</div> <div>43%</div> </div>
4	E	304	<div> <div>13%</div> <div>66%</div> <div>10%</div> <div>24%</div> </div>
5	G	71	<div> <div>25%</div> <div>69%</div> <div>11%</div> <div>20%</div> </div>
6	N	140	<div> <div>14%</div> <div>80%</div> <div>11%</div> <div>9%</div> </div>
7	R	661	<div> <div>15%</div> <div>37%</div> <div>6%</div> <div>57%</div> </div>

2 Entry composition

There are 7 unique types of molecules in this entry. The entry contains 9982 atoms, of which 0 are hydrogens and 0 are deuteriums.

In the tables below, the AltConf column contains the number of residues with at least one atom in alternate conformation and the Trace column contains the number of residues modelled with at most 2 atoms.

- Molecule 1 is a protein called Engineered G-alpha-q.

Mol	Chain	Residues	Atoms					AltConf	Trace
1	A	228	Total	C	N	O	S	0	0
			1877	1186	334	349	8		

- Molecule 2 is a protein called Guanine nucleotide-binding protein G(I)/G(S)/G(T) subunit beta-1.

Mol	Chain	Residues	Atoms					AltConf	Trace
2	B	338	Total	C	N	O	S	0	0
			2600	1604	467	508	21		

There are 32 discrepancies between the modelled and reference sequences:

Chain	Residue	Modelled	Actual	Comment	Reference
B	-4	MET	-	initiating methionine	UNP P62873
B	-3	GLY	-	expression tag	UNP P62873
B	-2	SER	-	expression tag	UNP P62873
B	-1	LEU	-	expression tag	UNP P62873
B	0	LEU	-	expression tag	UNP P62873
B	1	GLN	-	expression tag	UNP P62873
B	341	GLY	-	expression tag	UNP P62873
B	342	SER	-	expression tag	UNP P62873
B	343	SER	-	expression tag	UNP P62873
B	344	GLY	-	expression tag	UNP P62873
B	345	GLY	-	expression tag	UNP P62873
B	346	GLY	-	expression tag	UNP P62873
B	347	GLY	-	expression tag	UNP P62873
B	348	SER	-	expression tag	UNP P62873
B	349	GLY	-	expression tag	UNP P62873
B	350	GLY	-	expression tag	UNP P62873
B	351	GLY	-	expression tag	UNP P62873
B	352	GLY	-	expression tag	UNP P62873
B	353	SER	-	expression tag	UNP P62873
B	354	SER	-	expression tag	UNP P62873

Continued on next page...

Continued from previous page...

Chain	Residue	Modelled	Actual	Comment	Reference
B	355	GLY	-	expression tag	UNP P62873
B	356	VAL	-	expression tag	UNP P62873
B	357	SER	-	expression tag	UNP P62873
B	358	GLY	-	expression tag	UNP P62873
B	359	TRP	-	expression tag	UNP P62873
B	360	ARG	-	expression tag	UNP P62873
B	361	LEU	-	expression tag	UNP P62873
B	362	PHE	-	expression tag	UNP P62873
B	363	LYS	-	expression tag	UNP P62873
B	364	LYS	-	expression tag	UNP P62873
B	365	ILE	-	expression tag	UNP P62873
B	366	SER	-	expression tag	UNP P62873

- Molecule 3 is a protein (with D amino acids) called 3-PYRIDIN-4-YL-2,4-DIHYDRO-IND ENO[1,2-C.]PYRAZOLE.

Mol	Chain	Residues	Atoms				AltConf	Trace
3	C	7	Total	C	N	O	0	1
			64	46	12	6		

- Molecule 4 is a protein called scFv16.

Mol	Chain	Residues	Atoms					AltConf	Trace
4	E	231	Total	C	N	O	S	0	0
			1777	1128	294	345	10		

- Molecule 5 is a protein called Guanine nucleotide-binding protein G(I)/G(S)/G(O) subunit gamma-2.

Mol	Chain	Residues	Atoms					AltConf	Trace
5	G	57	Total	C	N	O	S	0	0
			436	273	77	83	3		

- Molecule 6 is a protein called Nb35.

Mol	Chain	Residues	Atoms					AltConf	Trace
6	N	128	Total	C	N	O	S	0	0
			973	605	170	192	6		

- Molecule 7 is a protein called human ghrelin receptor.

Mol	Chain	Residues	Atoms					AltConf	Trace
7	R	282	Total	C	N	O	S	0	0
			2255	1508	361	370	16		

H1 W2 A3 W4 F5 K6 NH27

[illegible][illegible]

MET	LYS	THR	ILE	ASP	ALA	LEU	SER	PHE	CYS	LEU	VAL	PHE	ALA	HIS	HIS	HIS	HIS	HIS	ASP	ASP	LEU	GLU	ASP	ASN	TRP	GLU	THR	LEU	ASN	VAL	ILE	GLU	LYS	ASP	ASN	ALA	VAL	LYS	THR	LYS	MET		
ALA	ALA	LEU	ASP	ALA	GLN	LYS	LYS	PRO	PRO	LYS	GLU	GLY	ASP	LYS	SER	PRO	ASP	SER	PRO	GLU	MET	LYS	ASP	PHE	ARG	HIS	GLY	PHE	ASP	ILE	LEU	VAL	GLY	GLN	LYS	ASN	GLY	GLY	VAL	ALA	GLN	ALA	GLU



4 Experimental information

Property	Value	Source
EM reconstruction method	SINGLE PARTICLE	Depositor
Imposed symmetry	POINT, Not provided	
Number of particles used	262892	Depositor
Resolution determination method	FSC 0.143 CUT-OFF	Depositor
CTF correction method	NONE	Depositor
Microscope	FEI TITAN KRIOS	Depositor
Voltage (kV)	300	Depositor
Electron dose ($e^-/\text{\AA}^2$)	80	Depositor
Minimum defocus (nm)	500	Depositor
Maximum defocus (nm)	3000	Depositor
Magnification	Not provided	
Image detector	GATAN K3 (6k x 4k)	Depositor
Maximum map value	2.004	Depositor
Minimum map value	-0.031	Depositor
Average map value	0.003	Depositor
Map value standard deviation	0.039	Depositor
Recommended contour level	0.16	Depositor
Map size (\AA)	188.09999, 188.09999, 188.09999	wwPDB
Map dimensions	180, 180, 180	wwPDB
Map angles ($^\circ$)	90.0, 90.0, 90.0	wwPDB
Pixel spacing (\AA)	1.045, 1.045, 1.045	Depositor

5 Model quality

5.1 Standard geometry

Bond lengths and bond angles in the following residue types are not validated in this section: DAL, DHI, DLY, NH2, DPN, DTR

The Z score for a bond length (or angle) is the number of standard deviations the observed value is removed from the expected value. A bond length (or angle) with $|Z| > 5$ is considered an outlier worth inspection. RMSZ is the root-mean-square of all Z scores of the bond lengths (or angles).

Mol	Chain	Bond lengths		Bond angles	
		RMSZ	# Z >5	RMSZ	# Z >5
1	A	0.24	0/1909	0.41	0/2567
2	B	0.24	0/2647	0.46	0/3589
4	E	0.25	0/1821	0.44	0/2469
5	G	0.23	0/442	0.37	0/597
6	N	0.25	0/993	0.43	0/1345
7	R	0.24	0/2317	0.39	0/3157
All	All	0.24	0/10129	0.42	0/13724

There are no bond length outliers.

There are no bond angle outliers.

There are no chirality outliers.

There are no planarity outliers.

5.2 Too-close contacts

In the following table, the Non-H and H(model) columns list the number of non-hydrogen atoms and hydrogen atoms in the chain respectively. The H(added) column lists the number of hydrogen atoms added and optimized by MolProbity. The Clashes column lists the number of clashes within the asymmetric unit, whereas Symm-Clashes lists symmetry-related clashes.

Mol	Chain	Non-H	H(model)	H(added)	Clashes	Symm-Clashes
1	A	1877	0	1874	32	0
2	B	2600	0	2505	50	0
3	C	64	0	52	8	0
4	E	1777	0	1714	18	0
5	G	436	0	448	6	0
6	N	973	0	942	10	0
7	R	2255	0	2330	37	0
All	All	9982	0	9865	142	0

The all-atom clashscore is defined as the number of clashes found per 1000 atoms (including hydrogen atoms). The all-atom clashscore for this structure is 7.

All (142) close contacts within the same asymmetric unit are listed below, sorted by their clash magnitude.

Atom-1	Atom-2	Interatomic distance (Å)	Clash overlap (Å)
7:R:154:VAL:CG1	7:R:159:ARG:HH12	1.29	1.42
7:R:154:VAL:HG12	7:R:159:ARG:NH1	1.13	1.39
7:R:154:VAL:CG1	7:R:159:ARG:NH1	1.87	1.29
7:R:154:VAL:CB	7:R:159:ARG:NH1	2.18	1.05
7:R:154:VAL:CB	7:R:159:ARG:HH11	1.71	1.02
7:R:154:VAL:HA	7:R:159:ARG:NH1	1.87	0.88
7:R:154:VAL:HB	7:R:159:ARG:HH11	1.42	0.82
7:R:154:VAL:CA	7:R:159:ARG:NH1	2.42	0.81
4:E:39:GLN:HB3	4:E:93:MET:HB3	1.70	0.73
7:R:278:PRO:HA	7:R:281:VAL:HG12	1.71	0.72
2:B:4:LEU:HB3	2:B:8:ARG:HH12	1.53	0.72
3:C:5:DPN:H	3:C:6:DLY:HA	1.56	0.69
1:A:331:ASP:OD1	1:A:333:ARG:NH1	2.26	0.68
1:A:207:ILE:HD11	1:A:222:PHE:HB3	1.76	0.67
7:R:154:VAL:CA	7:R:159:ARG:HH11	2.06	0.67
1:A:209:GLU:OE2	1:A:211:LYS:NZ	2.28	0.67
1:A:376:PHE:HE1	7:R:149:LEU:HD22	1.61	0.64
7:R:74:LEU:O	7:R:79:ASN:ND2	2.30	0.63
1:A:239:ASN:HA	1:A:285:ILE:HD11	1.80	0.63
2:B:79:LEU:HD11	2:B:114:CYS:HB3	1.81	0.62
2:B:129:ARG:HG2	4:E:2:VAL:HG21	1.80	0.62
7:R:68:VAL:O	7:R:75:ARG:NH1	2.33	0.61
2:B:187:VAL:HA	2:B:203:ALA:HA	1.83	0.60
4:E:29:PHE:O	4:E:72:ARG:NH2	2.34	0.60
2:B:198:LEU:HB3	2:B:210:LEU:HD11	1.83	0.60
7:R:154:VAL:HG12	7:R:159:ARG:HH12	0.49	0.59
2:B:271:CYS:HB2	2:B:290:ASP:HB2	1.84	0.59
2:B:4:LEU:HB3	2:B:8:ARG:NH1	2.16	0.59
2:B:43:ILE:HD11	2:B:296:VAL:HG11	1.84	0.58
2:B:289:TYR:OH	2:B:297:TRP:NE1	2.36	0.58
2:B:210:LEU:HD23	2:B:219:ARG:HB2	1.84	0.58
3:C:2:DTR:HE1	3:C:6:DLY:HE3	1.69	0.57
2:B:165:THR:HG22	2:B:181:THR:HG22	1.86	0.57
7:R:116:CYS:HA	7:R:119:PHE:CE2	2.40	0.57
2:B:149:CYS:O	2:B:150:ARG:NH1	2.38	0.56
1:A:232:ARG:NE	2:B:228:ASP:OD2	2.36	0.56
2:B:290:ASP:OD1	2:B:314:ARG:NE	2.39	0.56

Continued on next page...

Continued from previous page...

Atom-1	Atom-2	Interatomic distance (Å)	Clash overlap (Å)
3:C:2:DTR:N	3:C:3:DAL:HB2	2.21	0.56
7:R:77:THR:HG22	7:R:160:VAL:HG21	1.88	0.56
2:B:93:ILE:HG12	2:B:133:VAL:HG21	1.89	0.55
1:A:238:PHE:HD2	1:A:241:VAL:HG21	1.71	0.55
2:B:58:ILE:O	2:B:316:SER:OG	2.24	0.55
2:B:129:ARG:HH21	4:E:197:SER:HB3	1.72	0.55
2:B:161:SER:OG	2:B:163:ASP:OD1	2.20	0.55
6:N:83:MET:HB3	6:N:86:LEU:HD21	1.88	0.55
7:R:217:SER:OG	7:R:283:ARG:NH2	2.39	0.55
2:B:294:CYS:HB2	2:B:308:LEU:HB2	1.88	0.54
1:A:388:LEU:HA	1:A:393:LEU:HB3	1.90	0.54
3:C:5:DPN:N	3:C:6:DLY:HA	2.20	0.54
4:E:180:ARG:NH1	4:E:222:GLU:O	2.41	0.54
7:R:261:THR:O	7:R:265:LEU:HG	2.08	0.53
2:B:289:TYR:HH	2:B:297:TRP:HE1	1.50	0.53
2:B:3:GLU:HA	2:B:6:GLN:NE2	2.24	0.53
2:B:124:TYR:HE1	2:B:135:VAL:HG22	1.73	0.53
7:R:153:VAL:HG23	7:R:154:VAL:HG13	1.91	0.52
2:B:79:LEU:HB2	2:B:93:ILE:HB	1.92	0.52
4:E:149:VAL:HG21	4:E:155:VAL:HG22	1.91	0.52
1:A:331:ASP:HB3	1:A:334:VAL:HG23	1.92	0.52
2:B:281:SER:HB3	5:G:48:ASP:HB2	1.91	0.52
2:B:200:VAL:HG22	2:B:234:PHE:CE1	2.44	0.51
2:B:210:LEU:HD22	2:B:255:LEU:HD22	1.93	0.51
2:B:192:LEU:HD13	2:B:199:PHE:HB3	1.92	0.51
1:A:27:GLU:OE1	2:B:89:LYS:NZ	2.42	0.51
2:B:68:ARG:HD2	2:B:85:TYR:CD2	2.46	0.51
3:C:7:NH2:N	7:R:120:GLN:HE21	2.09	0.50
4:E:140:MET:HB2	4:E:240:GLY:HA2	1.93	0.50
2:B:256:ARG:HB3	5:G:28:ILE:HB	1.94	0.50
4:E:178:LEU:HB2	4:E:188:LEU:HD11	1.94	0.49
2:B:160:SER:HB3	2:B:190:LEU:HD23	1.94	0.49
6:N:19:ARG:NH2	6:N:82:GLN:OE1	2.45	0.49
1:A:215:ASP:OD2	1:A:373:ARG:NH1	2.35	0.49
6:N:40:ALA:HB3	6:N:43:LYS:HB3	1.95	0.49
2:B:145:TYR:O	2:B:162:GLY:N	2.45	0.48
7:R:142:TYR:CG	7:R:231:LEU:HD22	2.48	0.48
1:A:50:ASN:ND2	1:A:249:ASP:OD2	2.47	0.47
1:A:217:VAL:HG21	7:R:149:LEU:HD23	1.95	0.47
3:C:4:DTR:HZ2	7:R:309:PHE:HA	1.97	0.47
4:E:20:LEU:HB2	4:E:81:LEU:HB3	1.97	0.47

Continued on next page...

Continued from previous page...

Atom-1	Atom-2	Interatomic distance (Å)	Clash overlap (Å)
5:G:18:GLN:NE2	5:G:22:GLU:OE2	2.41	0.47
6:N:29:PHE:O	6:N:72:ARG:NH2	2.48	0.46
2:B:248:ALA:HB1	2:B:269:ILE:HG22	1.97	0.46
7:R:217:SER:O	7:R:280:HIS:NE2	2.43	0.46
1:A:34:LYS:HG3	2:B:55:LEU:HG	1.96	0.46
1:A:224:VAL:O	1:A:224:VAL:HG12	2.14	0.46
1:A:248:VAL:HG22	1:A:269:ALA:HB1	1.98	0.46
1:A:39:ARG:HB2	7:R:153:VAL:HG12	1.97	0.46
6:N:52:SER:O	6:N:72:ARG:NH1	2.46	0.46
7:R:154:VAL:HG12	7:R:159:ARG:CZ	2.19	0.46
2:B:95:LEU:HD13	2:B:100:VAL:HG11	1.99	0.45
6:N:51:ILE:HG13	6:N:58:ILE:HG12	1.98	0.45
2:B:271:CYS:SG	2:B:289:TYR:HB3	2.57	0.45
4:E:100:ILE:O	4:E:105:SER:OG	2.24	0.45
7:R:130:THR:O	7:R:134:ILE:HG12	2.16	0.45
1:A:30:LEU:O	1:A:34:LYS:HB2	2.15	0.45
6:N:19:ARG:HE	6:N:80:TYR:HD2	1.64	0.45
2:B:73:ALA:HB2	2:B:103:CYS:HB3	1.98	0.44
1:A:60:MET:HG3	1:A:221:MET:HE2	1.98	0.44
1:A:342:ARG:HD2	1:A:363:PHE:CZ	2.53	0.44
2:B:320:VAL:HG22	2:B:327:VAL:HG22	2.00	0.44
2:B:256:ARG:HH12	5:G:36:ASP:HB3	1.82	0.44
2:B:112:VAL:HG13	2:B:124:TYR:HB2	1.99	0.44
1:A:289:LEU:HD13	1:A:359:CYS:SG	2.59	0.43
1:A:232:ARG:HH21	2:B:204:CYS:HB3	1.83	0.43
6:N:87:LYS:HE2	6:N:89:GLU:HB2	1.99	0.43
2:B:246:ASP:HA	2:B:272:GLY:HA3	2.00	0.43
7:R:129:ALA:O	7:R:133:THR:HG23	2.17	0.43
1:A:212:PHE:HE1	1:A:221:MET:HG3	1.83	0.43
4:E:165:LEU:HA	4:E:233:LEU:HD22	1.99	0.43
1:A:232:ARG:HD3	6:N:100:PRO:HG3	2.01	0.43
2:B:68:ARG:HD2	2:B:85:TYR:CE2	2.54	0.43
3:C:5:DPN:HB3	7:R:283:ARG:HG3	2.01	0.43
4:E:32:PHE:HD1	4:E:100:ILE:HB	1.84	0.43
7:R:76:THR:HG23	7:R:79:ASN:H	1.84	0.43
2:B:121:CYS:HB3	2:B:139:LEU:HB2	2.01	0.43
4:E:97:VAL:HG11	4:E:108:PHE:CD2	2.54	0.42
2:B:85:TYR:CZ	5:G:60:PRO:HB2	2.54	0.42
4:E:62:ASP:HA	4:E:65:LYS:HE2	2.02	0.42
7:R:76:THR:OG1	7:R:77:THR:N	2.52	0.42
7:R:57:GLY:HA3	7:R:93:PHE:HE2	1.85	0.42

Continued on next page...

Continued from previous page...

Atom-1	Atom-2	Interatomic distance (Å)	Clash overlap (Å)
4:E:20:LEU:HD12	4:E:81:LEU:HD23	2.02	0.42
5:G:33:ALA:O	5:G:37:LEU:HD23	2.20	0.42
7:R:163:VAL:HA	7:R:166:VAL:HG12	2.02	0.42
1:A:315:PHE:O	1:A:336:ARG:NH2	2.52	0.42
1:A:244:ILE:HB	1:A:287:VAL:HG12	2.02	0.42
1:A:36:VAL:HA	1:A:39:ARG:HG2	2.01	0.42
2:B:121:CYS:HB3	2:B:139:LEU:HD12	2.01	0.42
2:B:283:ARG:NE	2:B:298:ASP:OD1	2.46	0.42
2:B:57:LYS:HB2	2:B:332:TRP:CD1	2.55	0.41
1:A:230:GLU:OE2	1:A:232:ARG:NH2	2.54	0.41
1:A:384:LEU:O	1:A:388:LEU:HD13	2.20	0.41
6:N:68:PHE:CZ	6:N:83:MET:HG2	2.55	0.41
1:A:274:LYS:HB2	1:A:274:LYS:HE3	1.71	0.41
1:A:393:LEU:HD23	7:R:145:ILE:HD11	2.02	0.41
2:B:191:SER:CB	2:B:233:CYS:HA	2.51	0.41
4:E:12:VAL:HB	4:E:86:LEU:HD12	2.02	0.41
4:E:61:ALA:O	4:E:65:LYS:HG3	2.21	0.41
7:R:221:PHE:HB2	7:R:280:HIS:CE1	2.55	0.41
2:B:3:GLU:O	2:B:7:LEU:HG	2.21	0.40
4:E:61:ALA:HB3	4:E:64:VAL:HG22	2.03	0.40
7:R:106:TYR:CE1	7:R:197:GLU:HG3	2.55	0.40
1:A:292:ASN:HA	1:A:364:THR:HG23	2.04	0.40
3:C:3:DAL:O	7:R:305:ASN:ND2	2.55	0.40

There are no symmetry-related clashes.

5.3 Torsion angles [i](#)

5.3.1 Protein backbone [i](#)

In the following table, the Percentiles column shows the percent Ramachandran outliers of the chain as a percentile score with respect to all PDB entries followed by that with respect to all EM entries.

The Analysed column shows the number of residues for which the backbone conformation was analysed, and the total number of residues.

Mol	Chain	Analysed	Favoured	Allowed	Outliers	Percentiles	
1	A	222/362 (61%)	219 (99%)	3 (1%)	0	100	100
2	B	336/371 (91%)	329 (98%)	7 (2%)	0	100	100

Continued on next page...

Continued from previous page...

Mol	Chain	Analysed	Favoured	Allowed	Outliers	Percentiles	
4	E	227/304 (75%)	223 (98%)	4 (2%)	0	100	100
5	G	55/71 (78%)	55 (100%)	0	0	100	100
6	N	126/140 (90%)	122 (97%)	4 (3%)	0	100	100
7	R	278/661 (42%)	272 (98%)	6 (2%)	0	100	100
All	All	1244/1909 (65%)	1220 (98%)	24 (2%)	0	100	100

There are no Ramachandran outliers to report.

5.3.2 Protein sidechains [i](#)

In the following table, the Percentiles column shows the percent sidechain outliers of the chain as a percentile score with respect to all PDB entries followed by that with respect to all EM entries.

The Analysed column shows the number of residues for which the sidechain conformation was analysed, and the total number of residues.

Mol	Chain	Analysed	Rotameric	Outliers	Percentiles	
1	A	207/317 (65%)	207 (100%)	0	100	100
2	B	281/302 (93%)	281 (100%)	0	100	100
4	E	196/246 (80%)	196 (100%)	0	100	100
5	G	46/58 (79%)	46 (100%)	0	100	100
6	N	106/116 (91%)	106 (100%)	0	100	100
7	R	250/572 (44%)	250 (100%)	0	100	100
All	All	1086/1611 (67%)	1086 (100%)	0	100	100

There are no protein residues with a non-rotameric sidechain to report.

Sometimes sidechains can be flipped to improve hydrogen bonding and reduce clashes. All (1) such sidechains are listed below:

Mol	Chain	Res	Type
7	R	120	GLN

5.3.3 RNA [i](#)

There are no RNA molecules in this entry.

5.4 Non-standard residues in protein, DNA, RNA chains ⓘ

6 non-standard protein/DNA/RNA residues are modelled in this entry.

In the following table, the Counts columns list the number of bonds (or angles) for which Mogul statistics could be retrieved, the number of bonds (or angles) that are observed in the model and the number of bonds (or angles) that are defined in the Chemical Component Dictionary. The Link column lists molecule types, if any, to which the group is linked. The Z score for a bond length (or angle) is the number of standard deviations the observed value is removed from the expected value. A bond length (or angle) with $|Z| > 2$ is considered an outlier worth inspection. RMSZ is the root-mean-square of all Z scores of the bond lengths (or angles).

Mol	Type	Chain	Res	Link	Bond lengths			Bond angles		
					Counts	RMSZ	# $ Z > 2$	Counts	RMSZ	# $ Z > 2$
3	DTR	C	2	3	13,15,16	1.05	0	13,20,22	0.87	1 (7%)
3	DTR	C	4	3	13,15,16	0.96	1 (7%)	13,20,22	0.60	0
3	DHI	C	1	3	5,10,11	0.59	0	3,12,14	0.89	0
3	DLY	C	6	3	7,8,9	0.93	1 (14%)	3,8,10	0.35	0
3	DAL	C	3	3	3,4,5	0.29	0	2,4,6	1.24	0
3	DPN	C	5	3	10,11,12	0.53	0	10,13,15	0.47	0

In the following table, the Chirals column lists the number of chiral outliers, the number of chiral centers analysed, the number of these observed in the model and the number defined in the Chemical Component Dictionary. Similar counts are reported in the Torsion and Rings columns. '-' means no outliers of that kind were identified.

Mol	Type	Chain	Res	Link	Chirals	Torsions	Rings
3	DTR	C	2	3	-	2/4/6/8	0/2/2/2
3	DTR	C	4	3	-	1/4/6/8	0/2/2/2
3	DHI	C	1	3	-	3/5/6/8	0/1/1/1
3	DLY	C	6	3	-	2/6/7/9	-
3	DAL	C	3	3	-	0/0/2/4	-
3	DPN	C	5	3	-	1/5/6/8	0/1/1/1

All (2) bond length outliers are listed below:

Mol	Chain	Res	Type	Atoms	Z	Observed(Å)	Ideal(Å)
3	C	6	DLY	CB-CA	2.19	1.56	1.53
3	C	4	DTR	CD2-CE2	-2.12	1.36	1.42

All (1) bond angle outliers are listed below:

Mol	Chain	Res	Type	Atoms	Z	Observed(°)	Ideal(°)
3	C	2	DTR	CB-CG-CD1	-2.30	125.13	127.97

There are no chirality outliers.

All (9) torsion outliers are listed below:

Mol	Chain	Res	Type	Atoms
3	C	1	DHI	CA-CB-CG-ND1
3	C	2	DTR	N-CA-CB-CG
3	C	2	DTR	C-CA-CB-CG
3	C	6	DLY	N-CA-CB-CG
3	C	6	DLY	CE-CD-CG-CB
3	C	4	DTR	CA-CB-CG-CD1
3	C	1	DHI	N-CA-CB-CG
3	C	5	DPN	N-CA-CB-CG
3	C	1	DHI	C-CA-CB-CG

There are no ring outliers.

5 monomers are involved in 7 short contacts:

Mol	Chain	Res	Type	Clashes	Symm-Clashes
3	C	2	DTR	2	0
3	C	4	DTR	1	0
3	C	6	DLY	3	0
3	C	3	DAL	2	0
3	C	5	DPN	3	0

5.5 Carbohydrates [i](#)

There are no oligosaccharides in this entry.

5.6 Ligand geometry [i](#)

There are no ligands in this entry.

5.7 Other polymers [i](#)

There are no such residues in this entry.

5.8 Polymer linkage issues [i](#)

There are no chain breaks in this entry.

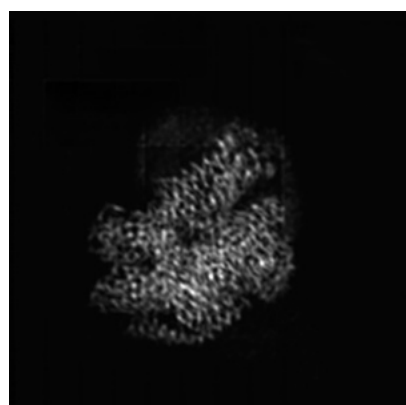
6 Map visualisation [i](#)

This section contains visualisations of the EMDB entry EMD-31501. These allow visual inspection of the internal detail of the map and identification of artifacts.

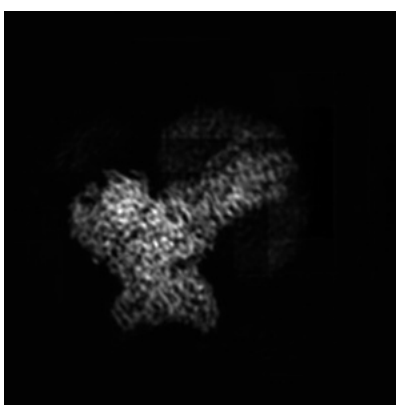
No raw map or half-maps were deposited for this entry and therefore no images, graphs, etc. pertaining to the raw map can be shown.

6.1 Orthogonal projections [i](#)

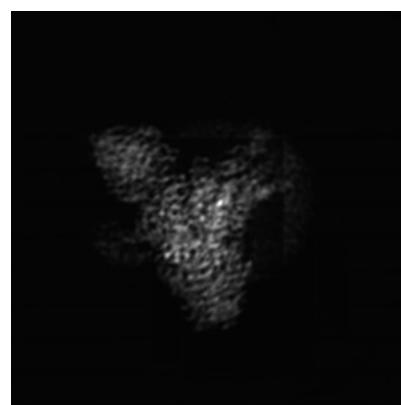
6.1.1 Primary map



X



Y

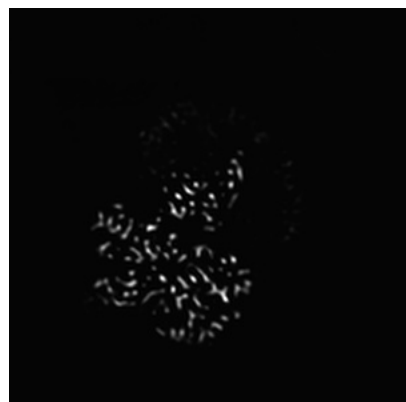


Z

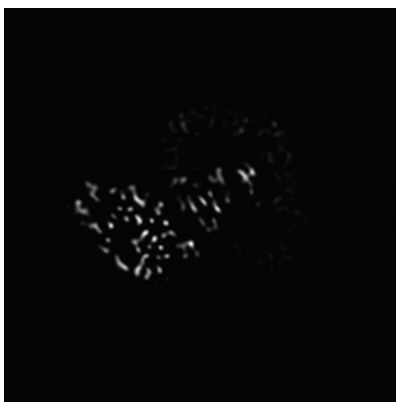
The images above show the map projected in three orthogonal directions.

6.2 Central slices [i](#)

6.2.1 Primary map



X Index: 90



Y Index: 90



Z Index: 90

The images above show central slices of the map in three orthogonal directions.

6.3 Largest variance slices [i](#)

6.3.1 Primary map



X Index: 93



Y Index: 95

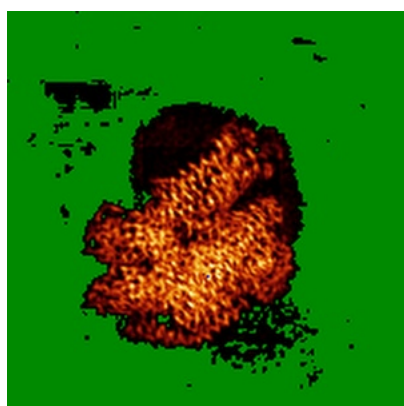


Z Index: 64

The images above show the largest variance slices of the map in three orthogonal directions.

6.4 Orthogonal standard-deviation projections (False-color) [i](#)

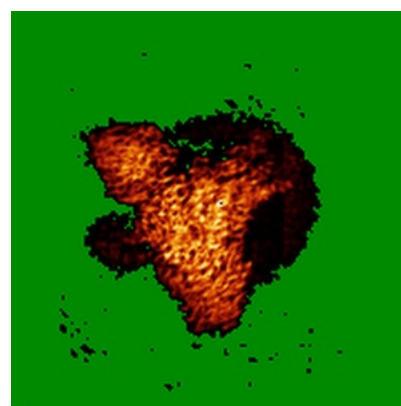
6.4.1 Primary map



X



Y

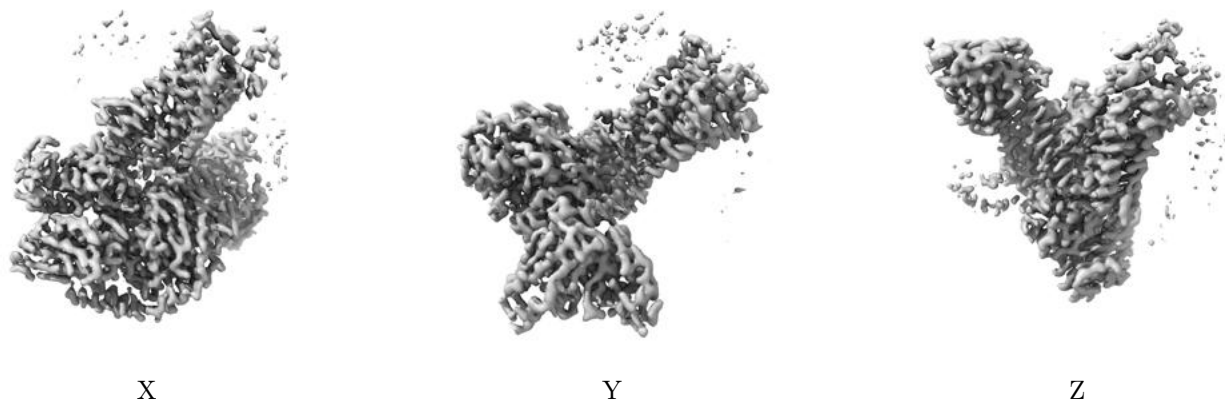


Z

The images above show the map standard deviation projections with false color in three orthogonal directions. Minimum values are shown in green, max in blue, and dark to light orange shades represent small to large values respectively.

6.5 Orthogonal surface views [i](#)

6.5.1 Primary map



The images above show the 3D surface view of the map at the recommended contour level 0.16. These images, in conjunction with the slice images, may facilitate assessment of whether an appropriate contour level has been provided.

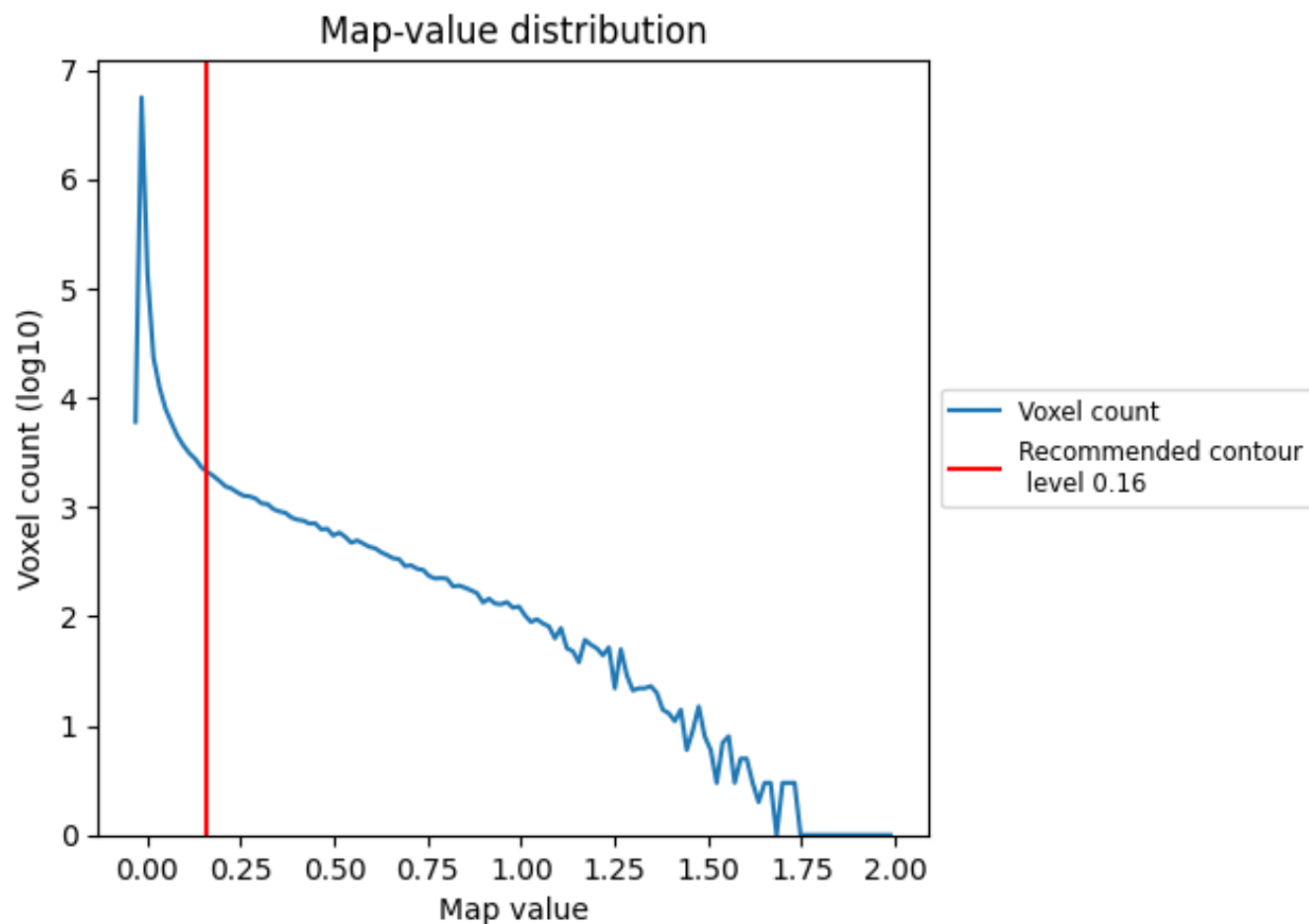
6.6 Mask visualisation [i](#)

This section was not generated. No masks/segmentation were deposited.

7 Map analysis [i](#)

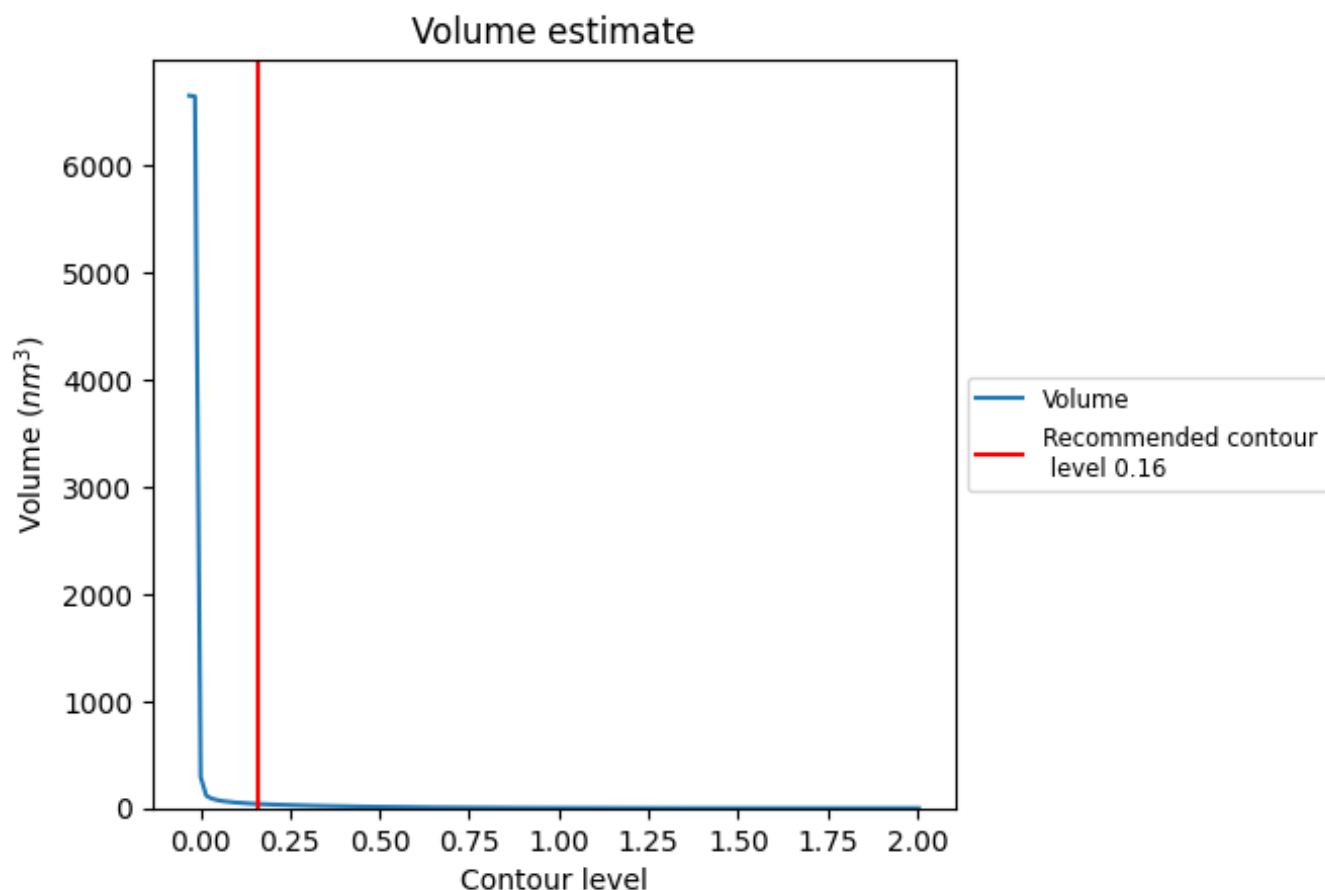
This section contains the results of statistical analysis of the map.

7.1 Map-value distribution [i](#)



The map-value distribution is plotted in 128 intervals along the x-axis. The y-axis is logarithmic. A spike in this graph at zero usually indicates that the volume has been masked.

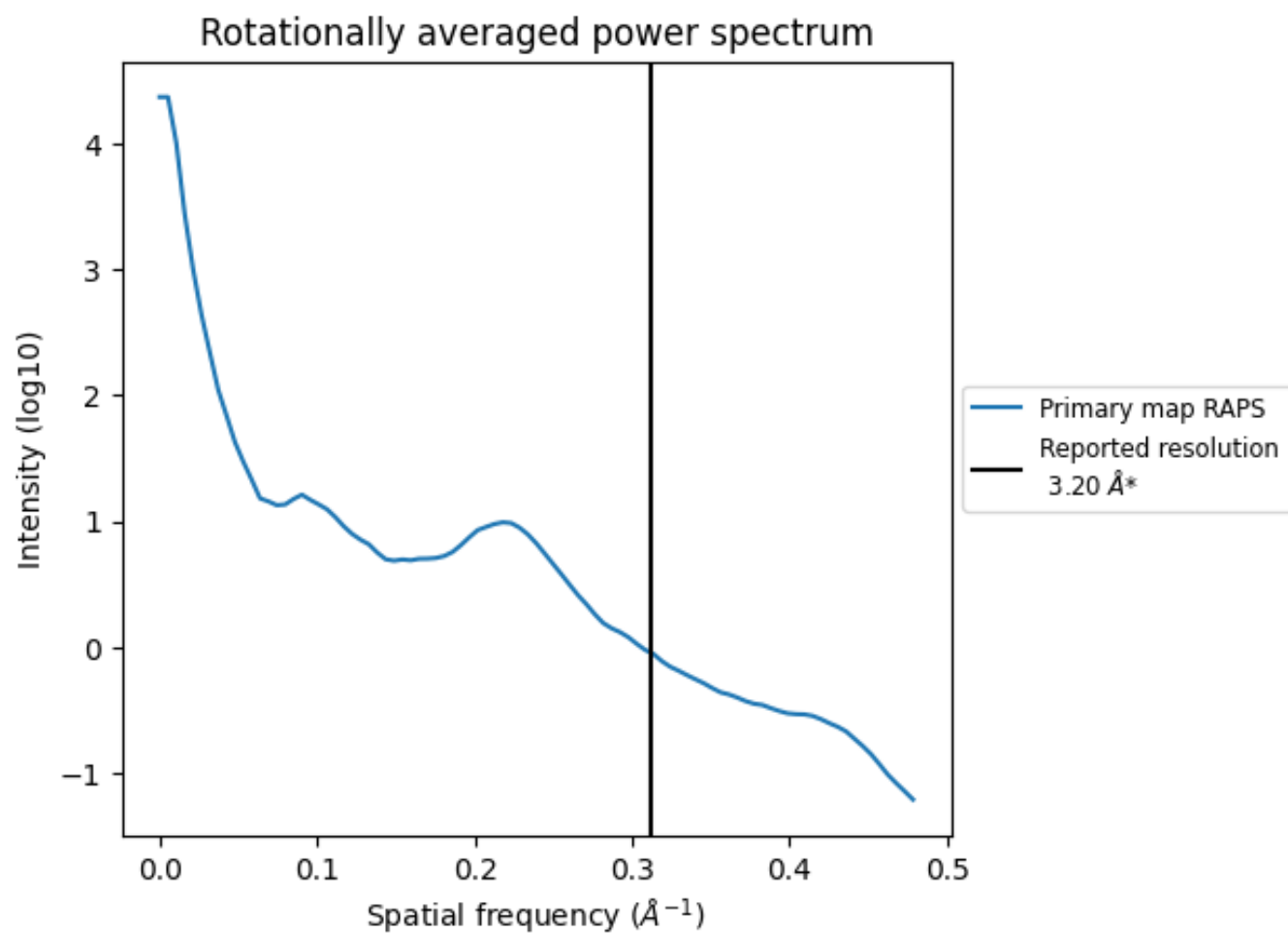
7.2 Volume estimate [i](#)



The volume at the recommended contour level is 39 nm^3 ; this corresponds to an approximate mass of 36 kDa.

The volume estimate graph shows how the enclosed volume varies with the contour level. The recommended contour level is shown as a vertical line and the intersection between the line and the curve gives the volume of the enclosed surface at the given level.

7.3 Rotationally averaged power spectrum ⓘ



*Reported resolution corresponds to spatial frequency of 0.312 Å⁻¹

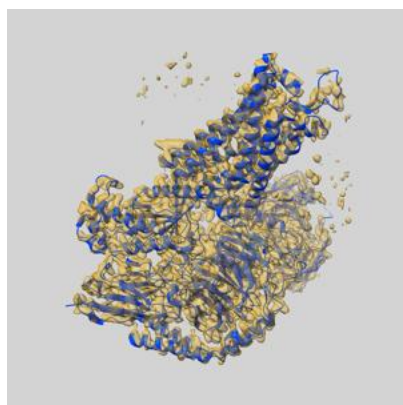
8 Fourier-Shell correlation ⓘ

This section was not generated. No FSC curve or half-maps provided.

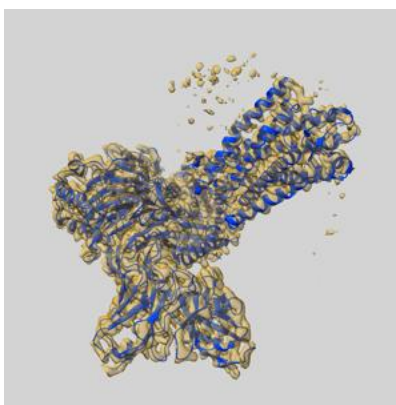
9 Map-model fit [i](#)

This section contains information regarding the fit between EMDB map EMD-31501 and PDB model 7F9Z. Per-residue inclusion information can be found in [section 3](#) on [page 6](#).

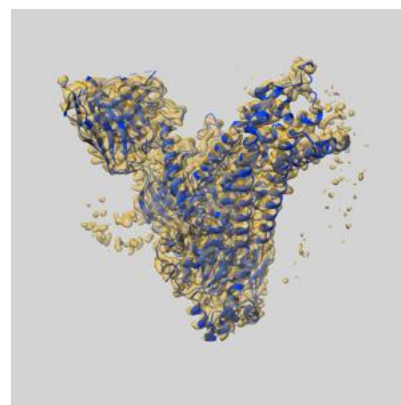
9.1 Map-model overlay [i](#)



X



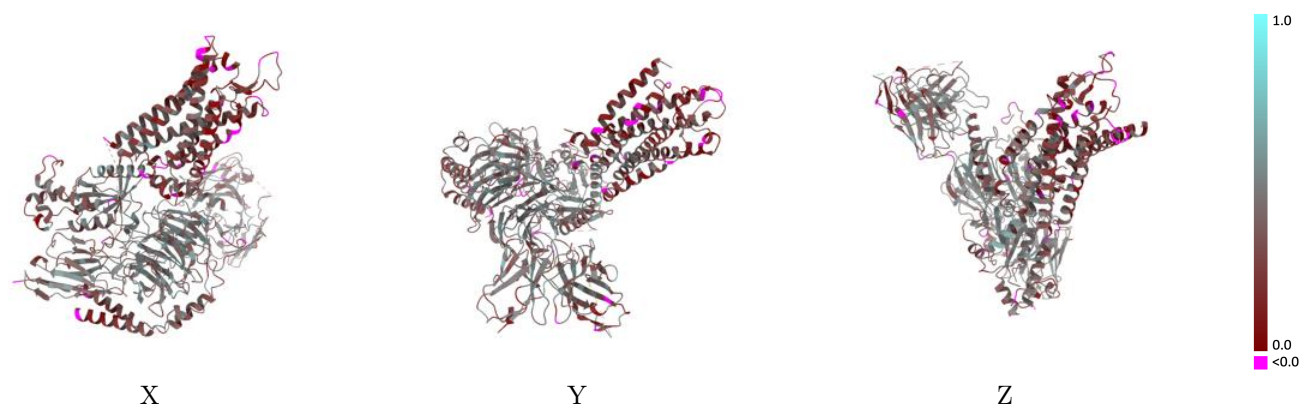
Y



Z

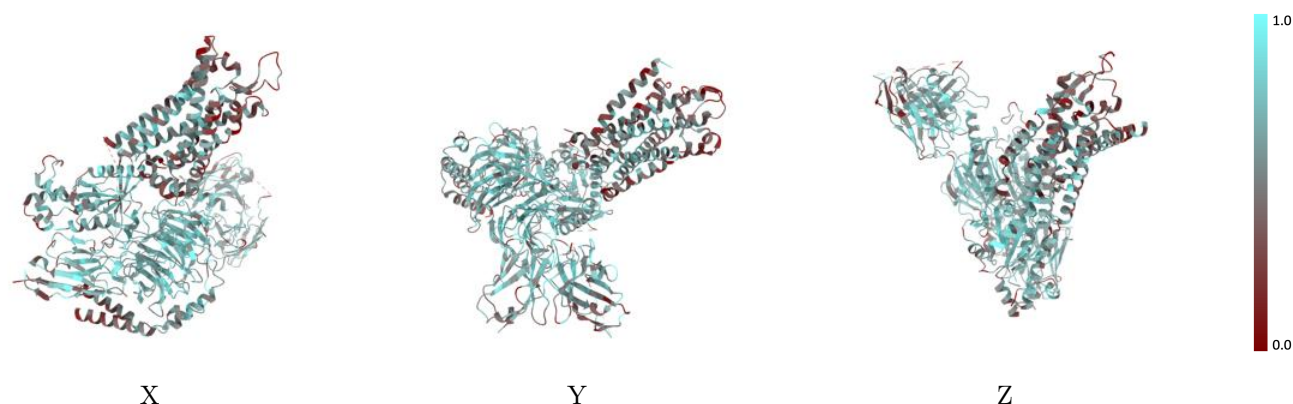
The images above show the 3D surface view of the map at the recommended contour level 0.16 at 50% transparency in yellow overlaid with a ribbon representation of the model coloured in blue. These images allow for the visual assessment of the quality of fit between the atomic model and the map.

9.2 Q-score mapped to coordinate model [i](#)



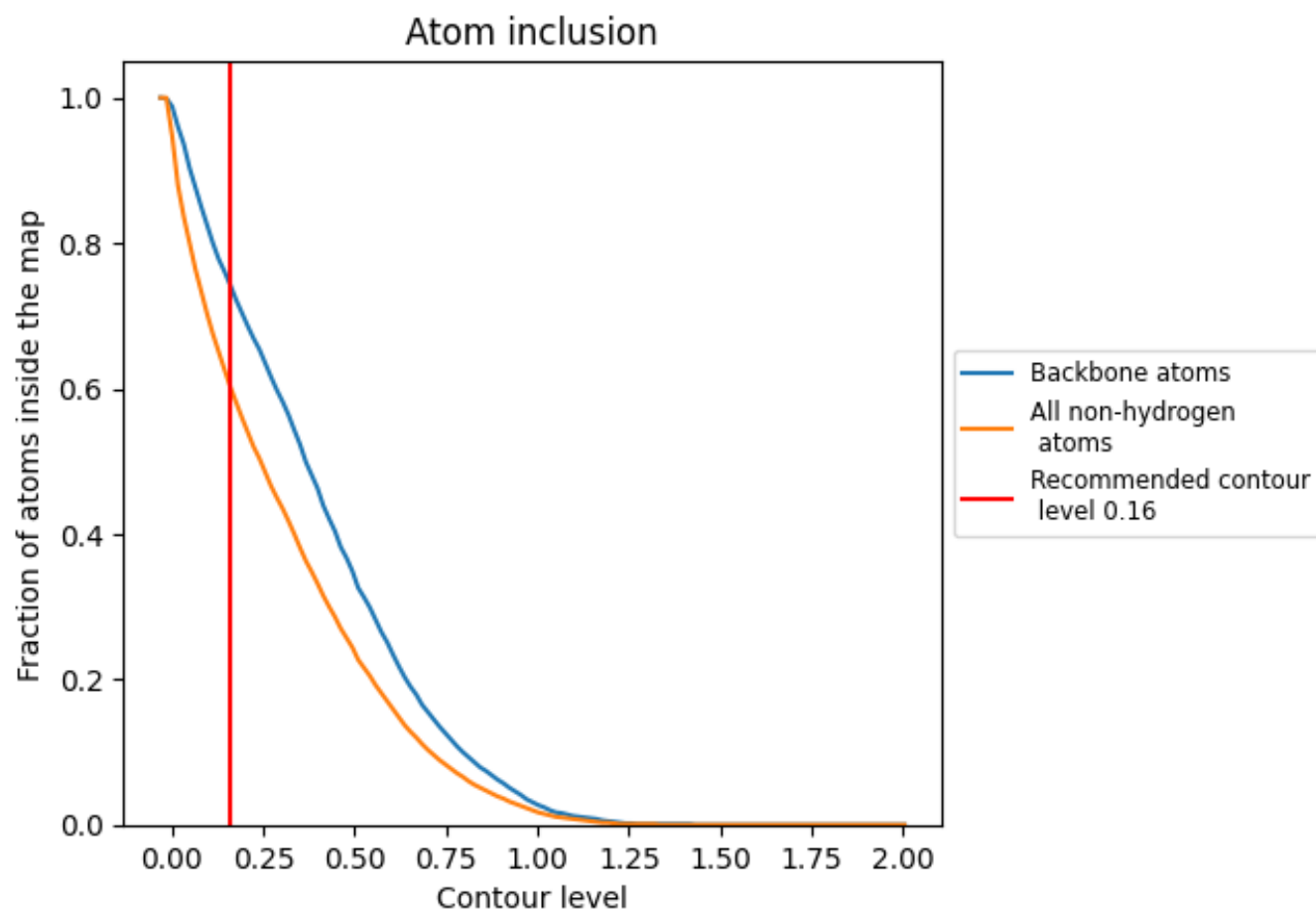
The images above show the model with each residue coloured according to its Q-score. This shows their resolvability in the map with higher Q-score values reflecting better resolvability. Please note: Q-score is calculating the resolvability of atoms, and thus high values are only expected at resolutions at which atoms can be resolved. Low Q-score values may therefore be expected for many entries.

9.3 Atom inclusion mapped to coordinate model [i](#)



The images above show the model with each residue coloured according to its atom inclusion. This shows to what extent they are inside the map at the recommended contour level (0.16).

9.4 Atom inclusion ⓘ



At the recommended contour level, 74% of all backbone atoms, 60% of all non-hydrogen atoms, are inside the map.

9.5 Map-model fit summary ⓘ

The table lists the average atom inclusion at the recommended contour level (0.16) and Q-score for the entire model and for each chain.

Chain	Atom inclusion	Q-score
All	<div><div></div>0.6020</div>	<div><div></div>0.3630</div>
A	<div><div></div>0.6430</div>	<div><div></div>0.3900</div>
B	<div><div></div>0.6830</div>	<div><div></div>0.4230</div>
C	<div><div></div>0.4840</div>	<div><div></div>0.1130</div>
E	<div><div></div>0.6110</div>	<div><div></div>0.3930</div>
G	<div><div></div>0.4750</div>	<div><div></div>0.2820</div>
N	<div><div></div>0.6370</div>	<div><div></div>0.3960</div>
R	<div><div></div>0.4830</div>	<div><div></div>0.2560</div>

1.0

0.0

<0.0