



Full wwPDB X-ray Structure Validation Report ⓘ

Nov 12, 2024 – 07:34 PM EST

PDB ID : 4F9J
Title : Structure of Escherichia coli PgaB 42-655 in complex with iron
Authors : Little, D.J.; Poloczek, J.; Whitney, J.C.; Robinson, H.; Nitz, M.; Howell, P.L.
Deposited on : 2012-05-18
Resolution : 2.10 Å(reported)

This is a Full wwPDB X-ray Structure Validation Report for a publicly released PDB entry.

We welcome your comments at validation@mail.wwpdb.org

A user guide is available at

<https://www.wwpdb.org/validation/2017/XrayValidationReportHelp>

with specific help available everywhere you see the ⓘ symbol.

The types of validation reports are described at

<http://www.wwpdb.org/validation/2017/FAQs#types>.

The following versions of software and data (see [references ⓘ](#)) were used in the production of this report:

MolProbity	:	4.02b-467
Mogul	:	2022.3.0, CSD as543be (2022)
Xtriage (Phenix)	:	1.20.1
EDS	:	3.0
Percentile statistics	:	20231227.v01 (using entries in the PDB archive December 27th 2023)
CCP4	:	9.0.003 (Gargrove)
Density-Fitness	:	1.0.11
Ideal geometry (proteins)	:	Engh & Huber (2001)
Ideal geometry (DNA, RNA)	:	Parkinson et al. (1996)
Validation Pipeline (wwPDB-VP)	:	2.39

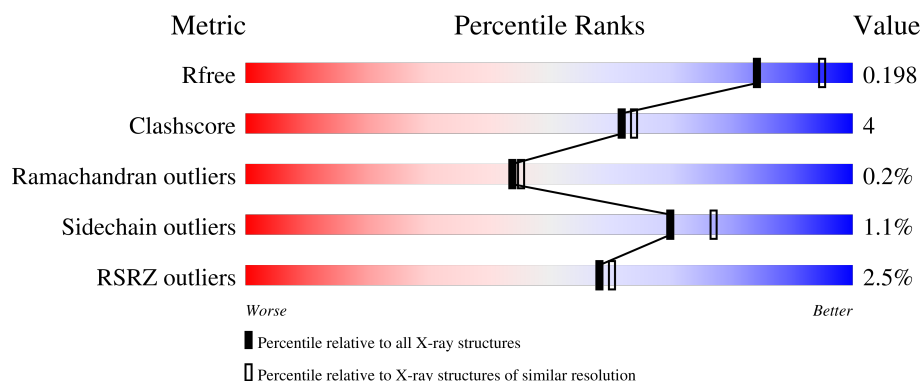
1 Overall quality at a glance

The following experimental techniques were used to determine the structure:

X-RAY DIFFRACTION

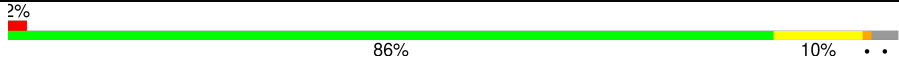

The reported resolution of this entry is 2.10 Å.

Percentile scores (ranging between 0-100) for global validation metrics of the entry are shown in the following graphic. The table shows the number of entries on which the scores are based.



Metric	Whole archive (#Entries)	Similar resolution (#Entries, resolution range(Å))
R_{free}	164625	6234 (2.10-2.10)
Clashscore	180529	6893 (2.10-2.10)
Ramachandran outliers	177936	6839 (2.10-2.10)
Sidechain outliers	177891	6840 (2.10-2.10)
RSRZ outliers	164620	6234 (2.10-2.10)

The table below summarises the geometric issues observed across the polymeric chains and their fit to the electron density. The red, orange, yellow and green segments of the lower bar indicate the fraction of residues that contain outliers for ≥ 3 , 2, 1 and 0 types of geometric quality criteria respectively. A grey segment represents the fraction of residues that are not modelled. The numeric value for each fraction is indicated below the corresponding segment, with a dot representing fractions $\leq 5\%$. The upper red bar (where present) indicates the fraction of residues that have poor fit to the electron density. The numeric value is given above the bar.

Mol	Chain	Length	Quality of chain
1	A	618	
1	B	618	

2 Entry composition

There are 6 unique types of molecules in this entry. The entry contains 10225 atoms, of which 0 are hydrogens and 0 are deuteriums.

In the tables below, the ZeroOcc column contains the number of atoms modelled with zero occupancy, the AltConf column contains the number of residues with at least one atom in alternate conformation and the Trace column contains the number of residues modelled with at most 2 atoms.

- Molecule 1 is a protein called Poly-beta-1,6-N-acetyl-D-glucosamine N-deacetylase.

Mol	Chain	Residues	Atoms					ZeroOcc	AltConf	Trace
1	A	599	Total	C	N	O	Se	0	2	0
			4764	3069	815	868	12			
1	B	599	Total	C	N	O	Se	0	1	0
			4764	3075	812	865	12			

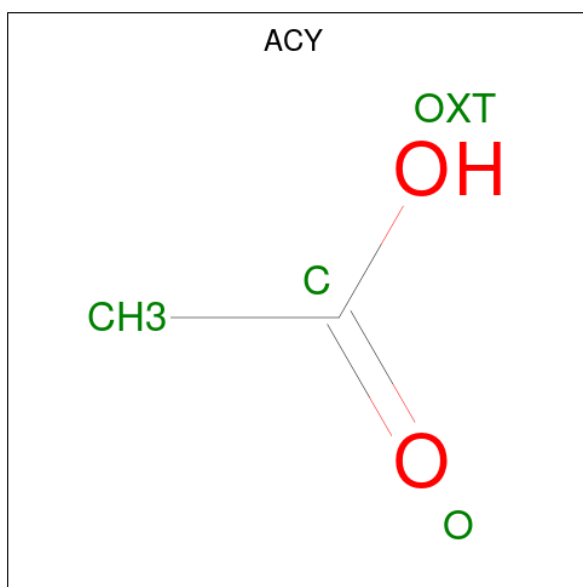
There are 8 discrepancies between the modelled and reference sequences:

Chain	Residue	Modelled	Actual	Comment	Reference
A	38	GLY	-	expression tag	UNP P75906
A	39	SER	-	expression tag	UNP P75906
A	40	HIS	-	expression tag	UNP P75906
A	41	MSE	-	expression tag	UNP P75906
B	38	GLY	-	expression tag	UNP P75906
B	39	SER	-	expression tag	UNP P75906
B	40	HIS	-	expression tag	UNP P75906
B	41	MSE	-	expression tag	UNP P75906

- Molecule 2 is FE (III) ION (three-letter code: FE) (formula: Fe).

Mol	Chain	Residues	Atoms		ZeroOcc	AltConf
2	A	1	Total	Fe	0	0
			1	1		
2	B	1	Total	Fe	0	0
			1	1		

- Molecule 3 is ACETIC ACID (three-letter code: ACY) (formula: C₂H₄O₂).

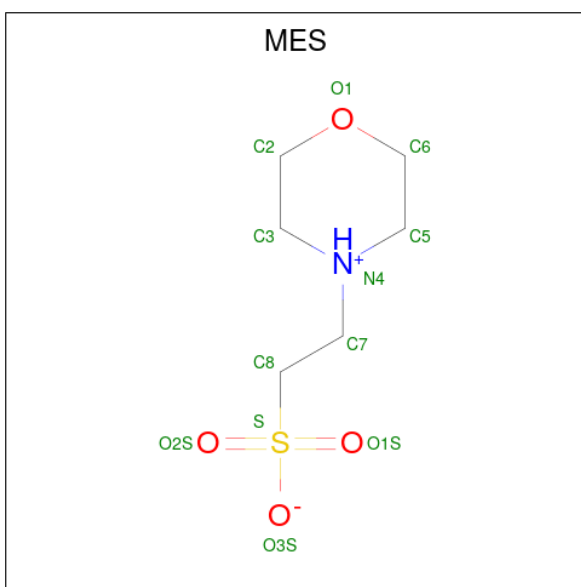


Mol	Chain	Residues	Atoms			ZeroOcc	AltConf
3	A	1	Total	C	O	0	0
			4	2	2		
3	B	1	Total	C	O	0	0
			4	2	2		

- Molecule 4 is CALCIUM ION (three-letter code: CA) (formula: Ca).

Mol	Chain	Residues	Atoms		ZeroOcc	AltConf
4	A	1	Total	Ca	0	0
			1	1		
4	B	1	Total	Ca	0	0
			1	1		

- Molecule 5 is 2-(N-MORPHOLINO)-ETHANESULFONIC ACID (three-letter code: MES) (formula: C₆H₁₃NO₄S).



Mol	Chain	Residues	Atoms					ZeroOcc	AltConf
5	A	1	Total	C	N	O	S	0	0
			12	6	1	4	1		
5	B	1	Total	C	N	O	S	0	0
			12	6	1	4	1		

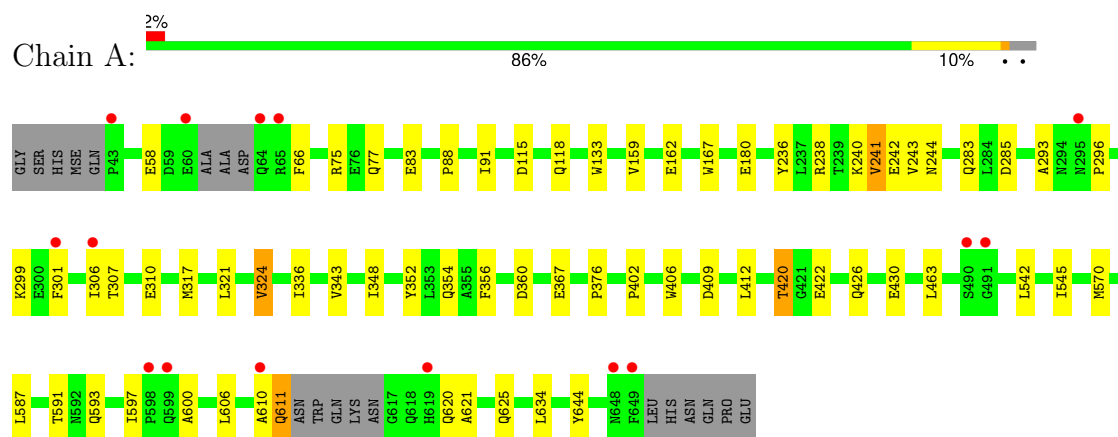
- Molecule 6 is water.

Mol	Chain	Residues	Atoms		ZeroOcc	AltConf
6	A	331	Total	O	0	0
			331	331		
6	B	330	Total	O	0	0
			330	330		

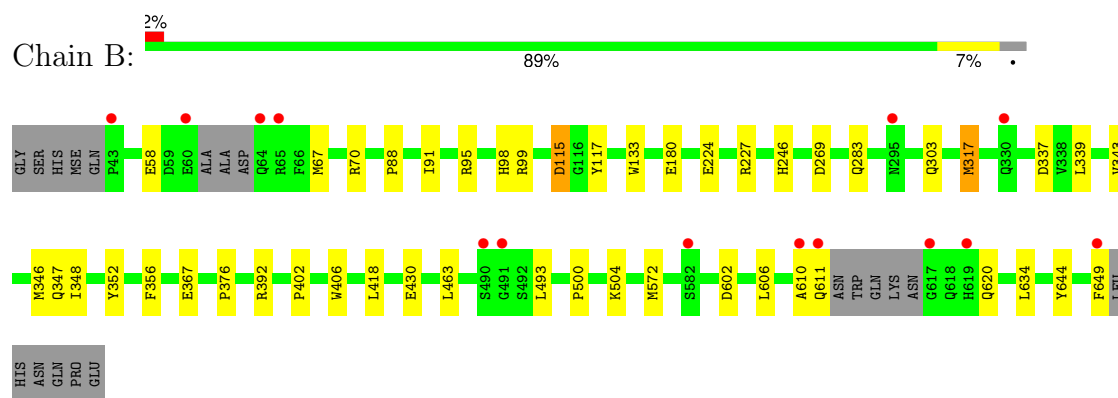
3 Residue-property plots [i](#)

These plots are drawn for all protein, RNA, DNA and oligosaccharide chains in the entry. The first graphic for a chain summarises the proportions of the various outlier classes displayed in the second graphic. The second graphic shows the sequence view annotated by issues in geometry and electron density. Residues are color-coded according to the number of geometric quality criteria for which they contain at least one outlier: green = 0, yellow = 1, orange = 2 and red = 3 or more. A red dot above a residue indicates a poor fit to the electron density ($RSRZ > 2$). Stretches of 2 or more consecutive residues without any outlier are shown as a green connector. Residues present in the sample, but not in the model, are shown in grey.

- Molecule 1: Poly-beta-1,6-N-acetyl-D-glucosamine N-deacetylase



- Molecule 1: Poly-beta-1,6-N-acetyl-D-glucosamine N-deacetylase



4 Data and refinement statistics

Property	Value	Source
Space group	P 21 21 21	Depositor
Cell constants a, b, c, α , β , γ	91.06Å 102.43Å 150.90Å 90.00° 90.00° 90.00°	Depositor
Resolution (Å)	45.53 – 2.10 45.53 – 2.10	Depositor EDS
% Data completeness (in resolution range)	97.3 (45.53-2.10) 97.4 (45.53-2.10)	Depositor EDS
R_{merge}	(Not available)	Depositor
R_{sym}	(Not available)	Depositor
$\langle I/\sigma(I) \rangle$ ¹	25.72 (at 2.10Å)	Xtriage
Refinement program	PHENIX (phenix.refine: 1.7.3_928)	Depositor
R, R_{free}	0.165 , 0.198 0.164 , 0.198	Depositor DCC
R_{free} test set	2000 reflections (2.49%)	wwPDB-VP
Wilson B-factor (Å ²)	23.9	Xtriage
Anisotropy	0.407	Xtriage
Bulk solvent k_{sol} (e/Å ³), B_{sol} (Å ²)	0.35 , 45.1	EDS
L-test for twinning ²	$\langle L \rangle = 0.47$, $\langle L^2 \rangle = 0.30$	Xtriage
Estimated twinning fraction	No twinning to report.	Xtriage
F_o, F_c correlation	0.96	EDS
Total number of atoms	10225	wwPDB-VP
Average B, all atoms (Å ²)	31.0	wwPDB-VP

Xtriage's analysis on translational NCS is as follows: *The analyses of the Patterson function reveals a significant off-origin peak that is 43.99 % of the origin peak, indicating pseudo-translational symmetry. The chance of finding a peak of this or larger height randomly in a structure without pseudo-translational symmetry is equal to 1.6287e-04. The detected translational NCS is most likely also responsible for the elevated intensity ratio.*

¹Intensities estimated from amplitudes.

²Theoretical values of $\langle |L| \rangle$, $\langle L^2 \rangle$ for acentric reflections are 0.5, 0.333 respectively for untwinned datasets, and 0.375, 0.2 for perfectly twinned datasets.

5 Model quality

5.1 Standard geometry

Bond lengths and bond angles in the following residue types are not validated in this section: ACY, FE, CA, MES

The Z score for a bond length (or angle) is the number of standard deviations the observed value is removed from the expected value. A bond length (or angle) with $|Z| > 5$ is considered an outlier worth inspection. RMSZ is the root-mean-square of all Z scores of the bond lengths (or angles).

Mol	Chain	Bond lengths		Bond angles	
		RMSZ	# Z >5	RMSZ	# Z >5
1	A	0.38	0/4888	0.51	0/6643
1	B	0.38	0/4888	0.51	0/6643
All	All	0.38	0/9776	0.51	0/13286

There are no bond length outliers.

There are no bond angle outliers.

There are no chirality outliers.

There are no planarity outliers.

5.2 Too-close contacts

In the following table, the Non-H and H(model) columns list the number of non-hydrogen atoms and hydrogen atoms in the chain respectively. The H(added) column lists the number of hydrogen atoms added and optimized by MolProbity. The Clashes column lists the number of clashes within the asymmetric unit, whereas Symm-Clashes lists symmetry-related clashes.

Mol	Chain	Non-H	H(model)	H(added)	Clashes	Symm-Clashes
1	A	4764	0	4559	43	0
1	B	4764	0	4560	32	0
2	A	1	0	0	0	0
2	B	1	0	0	0	0
3	A	4	0	3	0	0
3	B	4	0	3	0	0
4	A	1	0	0	0	0
4	B	1	0	0	0	0
5	A	12	0	12	1	0
5	B	12	0	12	1	0
6	A	331	0	0	7	1

Continued on next page...

Continued from previous page...

Mol	Chain	Non-H	H(model)	H(added)	Clashes	Symm-Clashes
6	B	330	0	0	7	1
All	All	10225	0	9149	75	1

The all-atom clashscore is defined as the number of clashes found per 1000 atoms (including hydrogen atoms). The all-atom clashscore for this structure is 4.

All (75) close contacts within the same asymmetric unit are listed below, sorted by their clash magnitude.

Atom-1	Atom-2	Interatomic distance (Å)	Clash overlap (Å)
1:A:430:GLU:OE2	6:A:1089:HOH:O	1.95	0.83
1:B:430:GLU:OE2	6:B:937:HOH:O	2.08	0.71
1:A:83:GLU:OE1	6:A:1058:HOH:O	2.08	0.70
1:B:367:GLU:OE2	6:B:1057:HOH:O	2.10	0.69
1:A:367:GLU:OE1	6:A:1101:HOH:O	2.10	0.69
1:A:420:THR:OG1	6:A:1115:HOH:O	2.11	0.67
1:A:306:ILE:O	6:A:1111:HOH:O	2.13	0.66
1:B:611:GLN:HB3	1:B:620:GLN:HE22	1.61	0.65
1:B:337:ASP:OD1	1:B:392:ARG:NH2	2.26	0.65
1:A:610:ALA:HB2	1:A:644:TYR:HB3	1.78	0.64
1:B:347:GLN:OE1	6:B:1105:HOH:O	2.16	0.62
1:B:504:LYS:NZ	6:B:996:HOH:O	2.32	0.61
1:B:95:ARG:HH22	1:B:246:HIS:CE1	2.19	0.61
1:B:224:GLU:OE2	1:B:227:ARG:NH2	2.32	0.61
1:B:98:HIS:O	6:B:994:HOH:O	2.17	0.60
1:A:367:GLU:HG2	1:A:376:PRO:HB2	1.85	0.58
1:A:542:LEU:HD12	1:A:545:ILE:HD11	1.85	0.58
1:B:610:ALA:HB2	1:B:644:TYR:HB3	1.84	0.58
1:A:75:ARG:NH1	6:A:1052:HOH:O	2.20	0.57
1:A:307:THR:HB	1:A:310:GLU:HG3	1.87	0.57
1:A:241:VAL:HG23	1:A:243:VAL:HG13	1.86	0.57
1:B:95:ARG:HH12	1:B:246:HIS:CE1	2.23	0.56
1:A:611:GLN:HG3	1:A:620:GLN:NE2	2.21	0.56
1:B:611:GLN:HB3	1:B:620:GLN:NE2	2.22	0.54
1:A:66:PHE:HZ	1:A:159:VAL:HG11	1.71	0.54
1:A:352:TYR:CD2	1:A:463:LEU:HD22	2.41	0.54
1:B:602:ASP:OD1	6:B:1018:HOH:O	2.19	0.54
1:B:343:VAL:HG13	1:B:348:ILE:HB	1.90	0.53
1:B:95:ARG:HD3	1:B:99:ARG:CZ	2.38	0.53
1:A:285:ASP:OD1	6:A:907:HOH:O	2.19	0.53
1:A:422:GLU:O	1:A:426:GLN:HG2	2.09	0.53
1:B:500:PRO:O	1:B:504:LYS:HD3	2.09	0.52

Continued on next page...

Continued from previous page...

Atom-1	Atom-2	Interatomic distance (Å)	Clash overlap (Å)
1:A:321:LEU:HA	1:A:324:VAL:HG13	1.92	0.51
1:A:606:LEU:HD23	1:A:634:LEU:HD13	1.93	0.51
1:B:367:GLU:HG2	1:B:376:PRO:HB2	1.94	0.50
1:A:621:ALA:O	1:A:625:GLN:HG2	2.12	0.49
1:A:91:ILE:HG13	1:A:180:GLU:HG2	1.95	0.49
1:A:611:GLN:HG3	1:A:620:GLN:HE22	1.77	0.48
1:A:324:VAL:HG21	1:A:336:ILE:HD11	1.95	0.48
1:B:91:ILE:HG13	1:B:180:GLU:HG2	1.96	0.47
1:B:115:ASP:HB2	1:B:117:TYR:CE2	2.49	0.47
1:A:402:PRO:HD2	1:A:406:TRP:CZ2	2.50	0.47
1:A:167:TRP:CG	1:A:240:LYS:HG2	2.50	0.47
1:B:95:ARG:HH11	1:B:269:ASP:CG	2.18	0.46
1:A:236:TYR:O	1:A:240:LYS:HB2	2.16	0.46
1:B:317:MSE:HE3	1:B:317:MSE:HB2	1.52	0.46
1:A:299:LYS:O	1:B:303:GLN:NE2	2.41	0.45
1:B:356:PHE:CD1	1:B:402:PRO:HD3	2.51	0.45
1:A:238:ARG:O	1:A:242:GLU:HA	2.16	0.45
1:A:88:PRO:HG2	1:A:133:TRP:CD2	2.52	0.44
1:B:418:LEU:HD11	1:B:493:LEU:HB3	2.00	0.43
1:A:343:VAL:HG13	1:A:348:ILE:HB	1.99	0.43
1:A:293:ALA:O	1:A:296:PRO:HD3	2.18	0.43
1:B:58:GLU:O	1:B:70:ARG:HA	2.18	0.43
1:A:409:ASP:HB3	1:A:412:LEU:HG	2.00	0.43
1:A:77:GLN:HG2	1:A:301:PHE:CG	2.53	0.42
1:B:339:LEU:HD13	1:B:649:PHE:CZ	2.54	0.42
1:A:360:ASP:OD1	1:A:360:ASP:N	2.41	0.42
1:B:352:TYR:CD2	1:B:463:LEU:HD22	2.54	0.42
1:B:606:LEU:HD23	1:B:634:LEU:HD13	2.01	0.42
1:A:354[A]:GLN:HG3	1:A:356:PHE:CE1	2.54	0.42
1:A:597:ILE:HB	1:A:600:ALA:HB2	2.00	0.42
5:B:704:MES:H31	6:B:1127:HOH:O	2.20	0.42
1:A:570:MSE:SE	5:A:704:MES:H72	2.69	0.42
1:A:587:LEU:O	1:A:591:THR:HG23	2.19	0.41
1:B:91:ILE:HG21	1:B:246:HIS:HE1	1.85	0.41
1:A:118:GLN:NE2	1:A:162:GLU:O	2.49	0.41
1:A:402:PRO:HD2	1:A:406:TRP:CH2	2.56	0.41
1:A:545:ILE:HA	1:A:593:GLN:HG3	2.03	0.41
1:A:606:LEU:HD12	1:A:606:LEU:HA	1.92	0.41
1:B:402:PRO:HD2	1:B:406:TRP:CZ2	2.55	0.41
1:A:306:ILE:HD12	1:A:306:ILE:HA	1.93	0.41
1:B:572:MSE:SE	1:B:572:MSE:H	2.54	0.41

Continued on next page...

Continued from previous page...

Atom-1	Atom-2	Interatomic distance (Å)	Clash overlap (Å)
1:B:88:PRO:HG2	1:B:133:TRP:CD2	2.56	0.41
1:A:238:ARG:HE	1:A:244:ASN:ND2	2.19	0.40

All (1) symmetry-related close contacts are listed below. The label for Atom-2 includes the symmetry operator and encoded unit-cell translations to be applied.

Atom-1	Atom-2	Interatomic distance (Å)	Clash overlap (Å)
6:A:1096:HOH:O	6:B:1087:HOH:O[2_564]	1.86	0.34

5.3 Torsion angles [i](#)

5.3.1 Protein backbone [i](#)

In the following table, the Percentiles column shows the percent Ramachandran outliers of the chain as a percentile score with respect to all X-ray entries followed by that with respect to entries of similar resolution.

The Analysed column shows the number of residues for which the backbone conformation was analysed, and the total number of residues.

Mol	Chain	Analysed	Favoured	Allowed	Outliers	Percentiles	
1	A	595/618 (96%)	582 (98%)	12 (2%)	1 (0%)	44	45
1	B	594/618 (96%)	582 (98%)	11 (2%)	1 (0%)	44	45
All	All	1189/1236 (96%)	1164 (98%)	23 (2%)	2 (0%)	44	45

All (2) Ramachandran outliers are listed below:

Mol	Chain	Res	Type
1	A	115	ASP
1	B	115	ASP

5.3.2 Protein sidechains [i](#)

In the following table, the Percentiles column shows the percent sidechain outliers of the chain as a percentile score with respect to all X-ray entries followed by that with respect to entries of similar resolution.

The Analysed column shows the number of residues for which the sidechain conformation was analysed, and the total number of residues.

Mol	Chain	Analysed	Rotameric	Outliers	Percentiles	
1	A	482/516 (93%)	475 (98%)	7 (2%)	60	67
1	B	483/516 (94%)	479 (99%)	4 (1%)	79	84
All	All	965/1032 (94%)	954 (99%)	11 (1%)	70	77

All (11) residues with a non-rotameric sidechain are listed below:

Mol	Chain	Res	Type
1	A	58	GLU
1	A	241	VAL
1	A	283	GLN
1	A	317	MSE
1	A	324	VAL
1	A	420	THR
1	A	611	GLN
1	B	67	MSE
1	B	283	GLN
1	B	317	MSE
1	B	346	MSE

Sometimes sidechains can be flipped to improve hydrogen bonding and reduce clashes. All (5) such sidechains are listed below:

Mol	Chain	Res	Type
1	A	244	ASN
1	A	611	GLN
1	A	620	GLN
1	B	611	GLN
1	B	620	GLN

5.3.3 RNA ⓘ

There are no RNA molecules in this entry.

5.4 Non-standard residues in protein, DNA, RNA chains ⓘ

There are no non-standard protein/DNA/RNA residues in this entry.

5.5 Carbohydrates ⓘ

There are no oligosaccharides in this entry.

5.6 Ligand geometry

Of 8 ligands modelled in this entry, 4 are monoatomic - leaving 4 for Mogul analysis.

In the following table, the Counts columns list the number of bonds (or angles) for which Mogul statistics could be retrieved, the number of bonds (or angles) that are observed in the model and the number of bonds (or angles) that are defined in the Chemical Component Dictionary. The Link column lists molecule types, if any, to which the group is linked. The Z score for a bond length (or angle) is the number of standard deviations the observed value is removed from the expected value. A bond length (or angle) with $|Z| > 2$ is considered an outlier worth inspection. RMSZ is the root-mean-square of all Z scores of the bond lengths (or angles).

Mol	Type	Chain	Res	Link	Bond lengths			Bond angles		
					Counts	RMSZ	# $ Z > 2$	Counts	RMSZ	# $ Z > 2$
3	ACY	A	702	2	3,3,3	0.79	0	3,3,3	0.71	0
5	MES	B	704	-	12,12,12	2.01	1 (8%)	15,16,16	1.73	2 (13%)
3	ACY	B	702	2	3,3,3	0.86	0	3,3,3	0.73	0
5	MES	A	704	-	12,12,12	2.12	1 (8%)	15,16,16	2.27	7 (46%)

In the following table, the Chirals column lists the number of chiral outliers, the number of chiral centers analysed, the number of these observed in the model and the number defined in the Chemical Component Dictionary. Similar counts are reported in the Torsion and Rings columns. '-' means no outliers of that kind were identified.

Mol	Type	Chain	Res	Link	Chirals	Torsions	Rings
5	MES	B	704	-	-	1/6/14/14	0/1/1/1
5	MES	A	704	-	-	1/6/14/14	0/1/1/1

All (2) bond length outliers are listed below:

Mol	Chain	Res	Type	Atoms	Z	Observed(Å)	Ideal(Å)
5	A	704	MES	C8-S	-7.00	1.67	1.77
5	B	704	MES	C8-S	-6.63	1.68	1.77

All (9) bond angle outliers are listed below:

Mol	Chain	Res	Type	Atoms	Z	Observed(°)	Ideal(°)
5	A	704	MES	C5-N4-C3	5.65	121.02	108.84
5	B	704	MES	C5-N4-C3	4.96	119.53	108.84
5	A	704	MES	C7-N4-C5	3.54	120.68	111.24
5	A	704	MES	C6-C5-N4	-2.71	106.00	110.12
5	B	704	MES	O3S-S-C8	2.39	110.67	106.00
5	A	704	MES	C7-N4-C3	2.28	117.31	111.24
5	A	704	MES	O2S-S-C8	2.25	110.13	106.73

Continued on next page...

Continued from previous page...

Mol	Chain	Res	Type	Atoms	Z	Observed(°)	Ideal(°)
5	A	704	MES	O3S-S-C8	2.07	110.06	106.00
5	A	704	MES	C6-O1-C2	2.04	116.46	109.88

There are no chirality outliers.

All (2) torsion outliers are listed below:

Mol	Chain	Res	Type	Atoms
5	A	704	MES	C8-C7-N4-C5
5	B	704	MES	C8-C7-N4-C5

There are no ring outliers.

2 monomers are involved in 2 short contacts:

Mol	Chain	Res	Type	Clashes	Symm-Clashes
5	B	704	MES	1	0
5	A	704	MES	1	0

5.7 Other polymers [i](#)

There are no such residues in this entry.

5.8 Polymer linkage issues [i](#)

There are no chain breaks in this entry.

6 Fit of model and data

6.1 Protein, DNA and RNA chains

In the following table, the column labelled ‘#RSRZ> 2’ contains the number (and percentage) of RSRZ outliers, followed by percent RSRZ outliers for the chain as percentile scores relative to all X-ray entries and entries of similar resolution. The OWAB column contains the minimum, median, 95th percentile and maximum values of the occupancy-weighted average B-factor per residue. The column labelled ‘Q< 0.9’ lists the number of (and percentage) of residues with an average occupancy less than 0.9.

Mol	Chain	Analysed	<RSRZ>	#RSRZ>2	OWAB(Å ²)	Q<0.9
1	A	587/618 (94%)	-0.46	15 (2%) 57 59	11, 28, 54, 74	2 (0%)
1	B	587/618 (94%)	-0.40	14 (2%) 59 61	13, 29, 56, 76	1 (0%)
All	All	1174/1236 (94%)	-0.43	29 (2%) 58 60	11, 29, 55, 76	3 (0%)

All (29) RSRZ outliers are listed below:

Mol	Chain	Res	Type	RSRZ
1	A	648	ASN	4.9
1	B	60	GLU	4.0
1	B	64	GLN	3.8
1	A	649	PHE	3.8
1	B	43	PRO	3.7
1	A	60	GLU	3.4
1	B	617	GLY	3.2
1	A	64	GLN	3.2
1	A	43	PRO	3.2
1	B	491	GLY	3.0
1	B	619	HIS	2.9
1	A	491	GLY	2.8
1	B	490	SER	2.8
1	A	610	ALA	2.7
1	B	649	PHE	2.7
1	A	65	ARG	2.7
1	B	65	ARG	2.7
1	B	330	GLN	2.6
1	B	610	ALA	2.5
1	A	599	GLN	2.5
1	A	598	PRO	2.5
1	B	582	SER	2.4
1	B	295	ASN	2.4
1	B	611	GLN	2.2

Continued on next page...

Continued from previous page...

Mol	Chain	Res	Type	RSRZ
1	A	306	ILE	2.2
1	A	490	SER	2.1
1	A	619	HIS	2.1
1	A	295	ASN	2.0
1	A	301	PHE	2.0

6.2 Non-standard residues in protein, DNA, RNA chains [i](#)

There are no non-standard protein/DNA/RNA residues in this entry.

6.3 Carbohydrates [i](#)

There are no monosaccharides in this entry.

6.4 Ligands [i](#)

In the following table, the Atoms column lists the number of modelled atoms in the group and the number defined in the chemical component dictionary. The B-factors column lists the minimum, median, 95th percentile and maximum values of B factors of atoms in the group. The column labelled 'Q< 0.9' lists the number of atoms with occupancy less than 0.9.

Mol	Type	Chain	Res	Atoms	RSCC	RSR	B-factors(\AA^2)	Q<0.9
5	MES	A	704	12/12	0.93	0.12	28,40,46,49	0
5	MES	B	704	12/12	0.95	0.09	27,31,36,37	0
3	ACY	A	702	4/4	0.96	0.07	17,21,23,27	0
4	CA	B	703	1/1	0.96	0.09	32,32,32,32	0
3	ACY	B	702	4/4	0.97	0.05	20,22,22,25	0
4	CA	A	703	1/1	0.99	0.06	28,28,28,28	0
2	FE	A	701	1/1	1.00	0.03	20,20,20,20	0
2	FE	B	701	1/1	1.00	0.03	21,21,21,21	0

6.5 Other polymers [i](#)

There are no such residues in this entry.