



# Full wwPDB X-ray Structure Validation Report ⓘ

Mar 20, 2025 – 12:51 AM EDT

PDB ID : 4F8J  
Title : The structure of an aromatic compound transport protein from Rhodopseudomonas palustris in complex with p-coumarate  
Authors : Cuff, M.E.; Mack, J.C.; Zerbs, S.; Collart, F.; Joachimiak, A.; Midwest Center for Structural Genomics (MCSG)  
Deposited on : 2012-05-17  
Resolution : 1.60 Å(reported)

This is a Full wwPDB X-ray Structure Validation Report for a publicly released PDB entry.

We welcome your comments at [validation@mail.wwpdb.org](mailto:validation@mail.wwpdb.org)

A user guide is available at

<https://www.wwpdb.org/validation/2017/XrayValidationReportHelp>

with specific help available everywhere you see the ⓘ symbol.

The types of validation reports are described at

<http://www.wwpdb.org/validation/2017/FAQs#types>.

---

The following versions of software and data (see [references ⓘ](#)) were used in the production of this report:

MolProbity : 4.02b-467  
Mogul : 2022.3.0, CSD as543be (2022)  
Xtriage (Phenix) : 1.21  
EDS : 3.0  
Percentile statistics : 20231227.v01 (using entries in the PDB archive December 27th 2023)  
CCP4 : 9.0.004 (Gargrove)  
Density-Fitness : 1.0.11  
Ideal geometry (proteins) : Engh & Huber (2001)  
Ideal geometry (DNA, RNA) : Parkinson et al. (1996)  
Validation Pipeline (wwPDB-VP) : 2.41.4

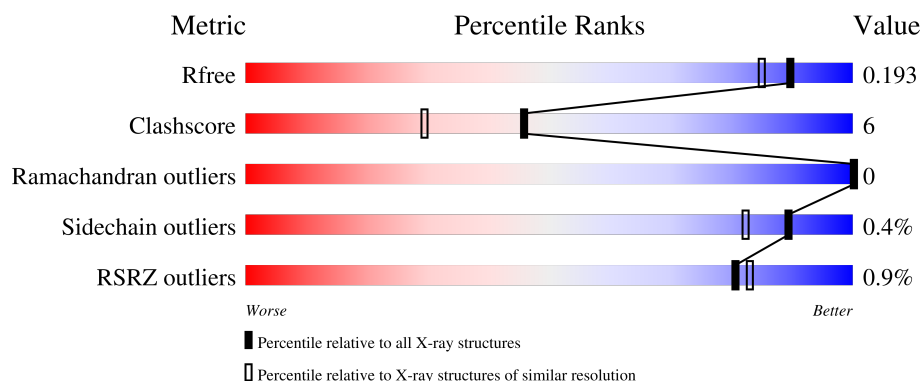
# 1 Overall quality at a glance

The following experimental techniques were used to determine the structure:

## *X-RAY DIFFRACTION*

The reported resolution of this entry is 1.60 Å.

Percentile scores (ranging between 0-100) for global validation metrics of the entry are shown in the following graphic. The table shows the number of entries on which the scores are based.



Metric	Whole archive (#Entries)	Similar resolution (#Entries, resolution range(Å))
$R_{free}$	164625	4274 (1.60-1.60)
Clashscore	180529	4682 (1.60-1.60)
Ramachandran outliers	177936	4583 (1.60-1.60)
Sidechain outliers	177891	4582 (1.60-1.60)
RSRZ outliers	164620	4272 (1.60-1.60)

The table below summarises the geometric issues observed across the polymeric chains and their fit to the electron density. The red, orange, yellow and green segments of the lower bar indicate the fraction of residues that contain outliers for  $\geq 3$ , 2, 1 and 0 types of geometric quality criteria respectively. A grey segment represents the fraction of residues that are not modelled. The numeric value for each fraction is indicated below the corresponding segment, with a dot representing fractions  $\leq 5\%$ . The upper red bar (where present) indicates the fraction of residues that have poor fit to the electron density. The numeric value is given above the bar.

Mol	Chain	Length	Quality of chain
1	A	362	

The following table lists non-polymeric compounds, carbohydrate monomers and non-standard residues in protein, DNA, RNA chains that are outliers for geometric or electron-density-fit criteria:

Mol	Type	Chain	Res	Chirality	Geometry	Clashes	Electron density
6	GOL	A	409	-	-	X	-

## 2 Entry composition [i](#)

There are 7 unique types of molecules in this entry. The entry contains 3284 atoms, of which 0 are hydrogens and 0 are deuteriums.

In the tables below, the ZeroOcc column contains the number of atoms modelled with zero occupancy, the AltConf column contains the number of residues with at least one atom in alternate conformation and the Trace column contains the number of residues modelled with at most 2 atoms.

- Molecule 1 is a protein called Putative branched-chain amino acid transport system substrate-binding protein.

Mol	Chain	Residues	Atoms					ZeroOcc	AltConf	Trace
1	A	359	Total	C	N	O	Se	0	17	0
			2832	1789	487	545	11			

There are 2 discrepancies between the modelled and reference sequences:

Chain	Residue	Modelled	Actual	Comment	Reference
A	24	SER	-	expression tag	UNP Q6N8W4
A	25	ASN	-	expression tag	UNP Q6N8W4

- Molecule 2 is SULFATE ION (three-letter code: SO4) (formula: O<sub>4</sub>S).



Mol	Chain	Residues	Atoms			ZeroOcc	AltConf
2	A	1	Total	O	S	0	0
			5	4	1		
2	A	1	Total	O	S	0	0
			5	4	1		

*Continued on next page...*

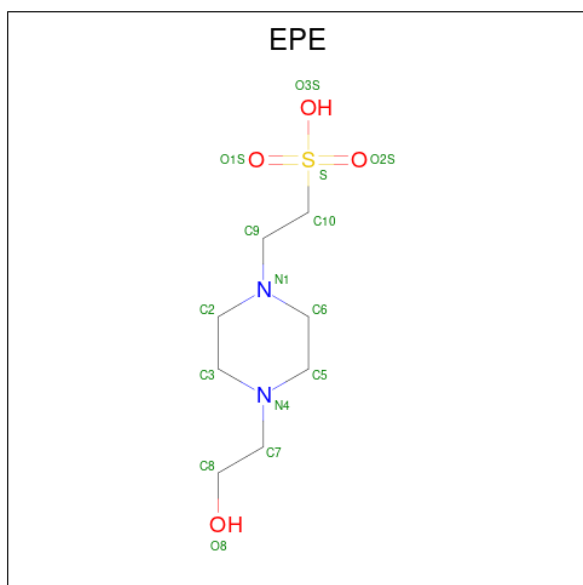
Continued from previous page...

Mol	Chain	Residues	Atoms			ZeroOcc	AltConf
2	A	1	Total	O	S	0	0
			5	4	1		
2	A	1	Total	O	S	0	0
			5	4	1		

- Molecule 3 is CHLORIDE ION (three-letter code: CL) (formula: Cl).

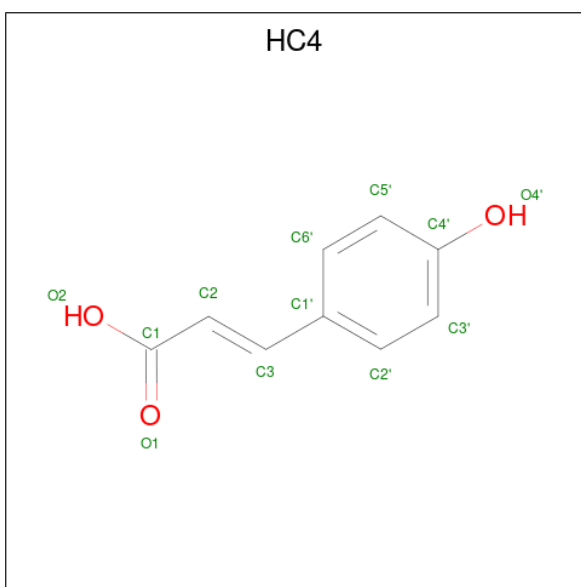
Mol	Chain	Residues	Atoms		ZeroOcc	AltConf
3	A	1	Total	Cl	0	0
			1	1		

- Molecule 4 is 4-(2-HYDROXYETHYL)-1-PIPERAZINE ETHANESULFONIC ACID (three-letter code: EPE) (formula: C<sub>8</sub>H<sub>18</sub>N<sub>2</sub>O<sub>4</sub>S).



Mol	Chain	Residues	Atoms					ZeroOcc	AltConf
4	A	1	Total	C	N	O	S	0	0
			15	8	2	4	1		

- Molecule 5 is 4'-HYDROXYCINNAMIC ACID (three-letter code: HC4) (formula: C<sub>9</sub>H<sub>8</sub>O<sub>3</sub>).



Mol	Chain	Residues	Atoms			ZeroOcc	AltConf
5	A	1	Total	C	O	0	0
			12	9	3		

- Molecule 6 is GLYCEROL (three-letter code: GOL) (formula:  $C_3H_8O_3$ ).



Mol	Chain	Residues	Atoms			ZeroOcc	AltConf
6	A	1	Total	C	O	0	0
			6	3	3		
6	A	1	Total	C	O	0	0
			6	3	3		
6	A	1	Total	C	O	0	0
			6	3	3		

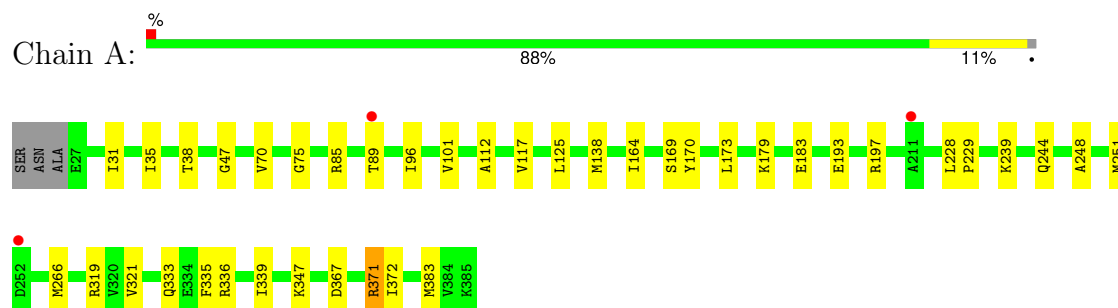
- Molecule 7 is water.

Mol	Chain	Residues	Atoms		ZeroOcc	AltConf
7	A	386	Total 386	O 386	0	0

### 3 Residue-property plots

These plots are drawn for all protein, RNA, DNA and oligosaccharide chains in the entry. The first graphic for a chain summarises the proportions of the various outlier classes displayed in the second graphic. The second graphic shows the sequence view annotated by issues in geometry and electron density. Residues are color-coded according to the number of geometric quality criteria for which they contain at least one outlier: green = 0, yellow = 1, orange = 2 and red = 3 or more. A red dot above a residue indicates a poor fit to the electron density ( $RSRZ > 2$ ). Stretches of 2 or more consecutive residues without any outlier are shown as a green connector. Residues present in the sample, but not in the model, are shown in grey.

- Molecule 1: Putative branched-chain amino acid transport system substrate-binding protein



## 4 Data and refinement statistics

Property	Value	Source
Space group	P 21 21 21	Depositor
Cell constants a, b, c, $\alpha$ , $\beta$ , $\gamma$	48.87Å 69.01Å 91.31Å 90.00° 90.00° 90.00°	Depositor
Resolution (Å)	36.55 – 1.60 36.55 – 1.60	Depositor EDS
% Data completeness (in resolution range)	99.3 (36.55-1.60) 99.3 (36.55-1.60)	Depositor EDS
$R_{merge}$	0.08	Depositor
$R_{sym}$	(Not available)	Depositor
$\langle I/\sigma(I) \rangle$ <sup>1</sup>	4.24 (at 1.60Å)	Xtriage
Refinement program	REFMAC	Depositor
R, $R_{free}$	0.157 , 0.192 0.156 , 0.193	Depositor DCC
$R_{free}$ test set	2075 reflections (5.03%)	wwPDB-VP
Wilson B-factor (Å <sup>2</sup> )	22.9	Xtriage
Anisotropy	0.100	Xtriage
Bulk solvent $k_{sol}$ (e/Å <sup>3</sup> ), $B_{sol}$ (Å <sup>2</sup> )	0.35 , 42.7	EDS
L-test for twinning <sup>2</sup>	$\langle  L  \rangle = 0.49$ , $\langle L^2 \rangle = 0.32$	Xtriage
Estimated twinning fraction	No twinning to report.	Xtriage
$F_o, F_c$ correlation	0.97	EDS
Total number of atoms	3284	wwPDB-VP
Average B, all atoms (Å <sup>2</sup> )	26.0	wwPDB-VP

Xtriage's analysis on translational NCS is as follows: *The largest off-origin peak in the Patterson function is 6.36% of the height of the origin peak. No significant pseudotranslation is detected.*

<sup>1</sup>Intensities estimated from amplitudes.

<sup>2</sup>Theoretical values of  $\langle |L| \rangle$ ,  $\langle L^2 \rangle$  for acentric reflections are 0.5, 0.333 respectively for untwinned datasets, and 0.375, 0.2 for perfectly twinned datasets.



## 5 Model quality [i](#)

### 5.1 Standard geometry [i](#)

Bond lengths and bond angles in the following residue types are not validated in this section: EPE, HC4, GOL, SO4, CL

The Z score for a bond length (or angle) is the number of standard deviations the observed value is removed from the expected value. A bond length (or angle) with  $|Z| > 5$  is considered an outlier worth inspection. RMSZ is the root-mean-square of all Z scores of the bond lengths (or angles).

Mol	Chain	Bond lengths		Bond angles	
		RMSZ	$\# Z  > 5$	RMSZ	$\# Z  > 5$
1	A	0.64	1/2878 (0.0%)	0.77	3/3887 (0.1%)

All (1) bond length outliers are listed below:

Mol	Chain	Res	Type	Atoms	Z	Observed(Å)	Ideal(Å)
1	A	138	MSE	SE-CE	-5.82	1.61	1.95

All (3) bond angle outliers are listed below:

Mol	Chain	Res	Type	Atoms	Z	Observed(°)	Ideal(°)
1	A	319	ARG	CG-CD-NE	-7.55	95.95	111.80
1	A	319	ARG	NE-CZ-NH2	-7.45	116.58	120.30
1	A	367	ASP	CB-CG-OD1	5.45	123.21	118.30

There are no chirality outliers.

There are no planarity outliers.

### 5.2 Too-close contacts [i](#)

In the following table, the Non-H and H(model) columns list the number of non-hydrogen atoms and hydrogen atoms in the chain respectively. The H(added) column lists the number of hydrogen atoms added and optimized by MolProbity. The Clashes column lists the number of clashes within the asymmetric unit, whereas Symm-Clashes lists symmetry-related clashes.

Mol	Chain	Non-H	H(model)	H(added)	Clashes	Symm-Clashes
1	A	2832	0	2858	32	0
2	A	20	0	0	0	0
3	A	1	0	0	1	0
4	A	15	0	18	0	0

*Continued on next page...*

*Continued from previous page...*

Mol	Chain	Non-H	H(model)	H(added)	Clashes	Symm-Clashes
5	A	12	0	7	1	0
6	A	18	0	24	7	0
7	A	386	0	0	6	0
All	All	3284	0	2907	33	0

The all-atom clashscore is defined as the number of clashes found per 1000 atoms (including hydrogen atoms). The all-atom clashscore for this structure is 6.

All (33) close contacts within the same asymmetric unit are listed below, sorted by their clash magnitude.

Atom-1	Atom-2	Interatomic distance (Å)	Clash overlap (Å)
1:A:75:GLY:HA3	6:A:409:GOL:H31	1.46	0.97
1:A:101:VAL:HG21	6:A:409:GOL:H11	1.66	0.76
1:A:347:LYS:HD3	7:A:849:HOH:O	1.89	0.73
1:A:197:ARG:HD3	6:A:409:GOL:H12	1.71	0.72
1:A:251:MSE:HE2	7:A:834:HOH:O	1.93	0.67
3:A:402:CL:CL	7:A:603:HOH:O	2.52	0.63
1:A:248:ALA:HB3	1:A:266[B]:MSE:SE	2.51	0.61
1:A:35[B]:ILE:CG2	1:A:70:VAL:HG22	2.32	0.60
1:A:333:GLN:OE1	1:A:336[B]:ARG:NH2	2.38	0.56
1:A:75:GLY:HA3	6:A:409:GOL:C3	2.30	0.56
1:A:96:ILE:HD11	1:A:112:ALA:HB2	1.88	0.55
1:A:35[B]:ILE:HG23	1:A:70:VAL:HA	1.88	0.55
1:A:173:LEU:HD12	7:A:786:HOH:O	2.08	0.53
1:A:117:VAL:HG22	1:A:336[A]:ARG:CZ	2.41	0.51
1:A:335:PHE:CE2	1:A:339[A]:ILE:HD11	2.47	0.50
1:A:371:ARG:HH12	6:A:410:GOL:C1	2.24	0.49
1:A:38:THR:O	1:A:47:GLY:HA3	2.13	0.48
1:A:35[B]:ILE:HG21	1:A:70:VAL:HG22	1.96	0.46
1:A:228:LEU:HB3	1:A:229:PRO:HD3	1.96	0.46
1:A:336[B]:ARG:NE	7:A:597:HOH:O	2.30	0.45
1:A:170:TYR:CE1	5:A:404:HC4:H2	2.53	0.43
1:A:31:ILE:HD13	1:A:321:VAL:HG11	2.00	0.43
1:A:85:ARG:HH11	1:A:89[A]:THR:CG2	2.32	0.42
1:A:197:ARG:CD	6:A:409:GOL:H12	2.47	0.42
1:A:169[B]:SER:HB2	6:A:405:GOL:H12	2.01	0.42
1:A:383[A]:MSE:HE2	1:A:383[A]:MSE:HB3	1.91	0.42
1:A:372:ILE:HD12	1:A:383[A]:MSE:HG3	2.01	0.42
1:A:239:LYS:HE3	7:A:824:HOH:O	2.20	0.41
1:A:164:ILE:HA	1:A:193:GLU:O	2.21	0.40
1:A:244:GLN:CB	1:A:266[B]:MSE:HE2	2.51	0.40

*Continued on next page...*

*Continued from previous page...*

Atom-1	Atom-2	Interatomic distance (Å)	Clash overlap (Å)
1:A:179:LYS:O	1:A:183:GLU:HB2	2.21	0.40

There are no symmetry-related clashes.

## 5.3 Torsion angles [i](#)

### 5.3.1 Protein backbone [i](#)

In the following table, the Percentiles column shows the percent Ramachandran outliers of the chain as a percentile score with respect to all X-ray entries followed by that with respect to entries of similar resolution.

The Analysed column shows the number of residues for which the backbone conformation was analysed, and the total number of residues.

Mol	Chain	Analysed	Favoured	Allowed	Outliers	Percentiles
1	A	374/362 (103%)	366 (98%)	8 (2%)	0	100 100

There are no Ramachandran outliers to report.

### 5.3.2 Protein sidechains [i](#)

In the following table, the Percentiles column shows the percent sidechain outliers of the chain as a percentile score with respect to all X-ray entries followed by that with respect to entries of similar resolution.

The Analysed column shows the number of residues for which the sidechain conformation was analysed, and the total number of residues.

Mol	Chain	Analysed	Rotameric	Outliers	Percentiles
1	A	300/278 (108%)	299 (100%)	1 (0%)	91 85

All (1) residues with a non-rotameric sidechain are listed below:

Mol	Chain	Res	Type
1	A	371	ARG

Sometimes sidechains can be flipped to improve hydrogen bonding and reduce clashes. There are no such sidechains identified.

### 5.3.3 RNA ⓘ

There are no RNA molecules in this entry.

## 5.4 Non-standard residues in protein, DNA, RNA chains ⓘ

There are no non-standard protein/DNA/RNA residues in this entry.

## 5.5 Carbohydrates ⓘ

There are no oligosaccharides in this entry.

## 5.6 Ligand geometry ⓘ

Of 10 ligands modelled in this entry, 1 is monoatomic - leaving 9 for Mogul analysis.

In the following table, the Counts columns list the number of bonds (or angles) for which Mogul statistics could be retrieved, the number of bonds (or angles) that are observed in the model and the number of bonds (or angles) that are defined in the Chemical Component Dictionary. The Link column lists molecule types, if any, to which the group is linked. The Z score for a bond length (or angle) is the number of standard deviations the observed value is removed from the expected value. A bond length (or angle) with  $|Z| > 2$  is considered an outlier worth inspection. RMSZ is the root-mean-square of all Z scores of the bond lengths (or angles).

Mol	Type	Chain	Res	Link	Bond lengths			Bond angles		
					Counts	RMSZ	# Z  > 2	Counts	RMSZ	# Z  > 2
6	GOL	A	409	-	5,5,5	1.87	1 (20%)	5,5,5	2.80	2 (40%)
5	HC4	A	404	-	12,12,12	0.65	0	15,15,15	1.29	2 (13%)
2	SO4	A	401	-	4,4,4	0.45	0	6,6,6	0.13	0
2	SO4	A	407	-	4,4,4	0.56	0	6,6,6	0.12	0
6	GOL	A	405	-	5,5,5	0.32	0	5,5,5	0.90	0
4	EPE	A	403	-	15,15,15	2.33	2 (13%)	19,20,20	3.84	7 (36%)
2	SO4	A	406	-	4,4,4	0.36	0	6,6,6	0.27	0
2	SO4	A	408	-	4,4,4	0.49	0	6,6,6	0.10	0
6	GOL	A	410	-	5,5,5	0.38	0	5,5,5	0.55	0

In the following table, the Chirals column lists the number of chiral outliers, the number of chiral centers analysed, the number of these observed in the model and the number defined in the Chemical Component Dictionary. Similar counts are reported in the Torsion and Rings columns. '-' means no outliers of that kind were identified.

Mol	Type	Chain	Res	Link	Chirals	Torsions	Rings
6	GOL	A	409	-	-	0/4/4/4	-

*Continued on next page...*

*Continued from previous page...*

Mol	Type	Chain	Res	Link	Chirals	Torsions	Rings
5	HC4	A	404	-	-	4/5/5/5	0/1/1/1
6	GOL	A	405	-	-	2/4/4/4	-
4	EPE	A	403	-	-	5/9/19/19	0/1/1/1
6	GOL	A	410	-	-	2/4/4/4	-

All (3) bond length outliers are listed below:

Mol	Chain	Res	Type	Atoms	Z	Observed(Å)	Ideal(Å)
4	A	403	EPE	C10-S	-7.75	1.66	1.77
4	A	403	EPE	O3S-S	3.64	1.60	1.47
6	A	409	GOL	O1-C1	2.69	1.53	1.42

All (11) bond angle outliers are listed below:

Mol	Chain	Res	Type	Atoms	Z	Observed(°)	Ideal(°)
4	A	403	EPE	O2S-S-C10	9.99	121.82	106.73
4	A	403	EPE	O3S-S-C10	-6.53	93.23	106.00
4	A	403	EPE	O3S-S-O2S	-6.50	95.13	111.40
4	A	403	EPE	O3S-S-O1S	-6.20	95.89	111.40
4	A	403	EPE	O1S-S-C10	5.85	115.57	106.73
6	A	409	GOL	O1-C1-C2	4.21	129.32	110.38
6	A	409	GOL	O3-C3-C2	3.81	127.53	110.38
4	A	403	EPE	C9-N1-C2	3.27	119.96	111.24
5	A	404	HC4	C2'-C3'-C4'	2.61	122.63	119.88
5	A	404	HC4	C5'-C6'-C1'	2.26	124.14	121.22
4	A	403	EPE	O2S-S-O1S	2.07	120.57	113.82

There are no chirality outliers.

All (13) torsion outliers are listed below:

Mol	Chain	Res	Type	Atoms
4	A	403	EPE	C10-C9-N1-C2
5	A	404	HC4	O1-C1-C2-C3
5	A	404	HC4	O2-C1-C2-C3
4	A	403	EPE	C8-C7-N4-C5
6	A	405	GOL	C1-C2-C3-O3
6	A	410	GOL	C1-C2-C3-O3
4	A	403	EPE	C10-C9-N1-C6
4	A	403	EPE	C9-C10-S-O2S
5	A	404	HC4	C6'-C1'-C3-C2

*Continued on next page...*

*Continued from previous page...*

Mol	Chain	Res	Type	Atoms
5	A	404	HC4	C2'-C1'-C3-C2
4	A	403	EPE	C8-C7-N4-C3
6	A	405	GOL	O2-C2-C3-O3
6	A	410	GOL	O2-C2-C3-O3

There are no ring outliers.

4 monomers are involved in 8 short contacts:

Mol	Chain	Res	Type	Clashes	Symm-Clashes
6	A	409	GOL	5	0
5	A	404	HC4	1	0
6	A	405	GOL	1	0
6	A	410	GOL	1	0

## 5.7 Other polymers [i](#)

There are no such residues in this entry.

## 5.8 Polymer linkage issues [i](#)

There are no chain breaks in this entry.

## 6 Fit of model and data [i](#)

### 6.1 Protein, DNA and RNA chains [i](#)

In the following table, the column labelled '#RSRZ > 2' contains the number (and percentage) of RSRZ outliers, followed by percent RSRZ outliers for the chain as percentile scores relative to all X-ray entries and entries of similar resolution. The OWAB column contains the minimum, median, 95<sup>th</sup> percentile and maximum values of the occupancy-weighted average B-factor per residue. The column labelled 'Q < 0.9' lists the number of (and percentage) of residues with an average occupancy less than 0.9.

Mol	Chain	Analysed	<RSRZ>	#RSRZ>2	OWAB(Å <sup>2</sup> )	Q<0.9
1	A	350/362 (96%)	-0.06	3 (0%) 81 83	8, 23, 35, 43	15 (4%)

All (3) RSRZ outliers are listed below:

Mol	Chain	Res	Type	RSRZ
1	A	89[A]	THR	3.2
1	A	211	ALA	2.5
1	A	252	ASP	2.4

### 6.2 Non-standard residues in protein, DNA, RNA chains [i](#)

There are no non-standard protein/DNA/RNA residues in this entry.

### 6.3 Carbohydrates [i](#)

There are no monosaccharides in this entry.

### 6.4 Ligands [i](#)

In the following table, the Atoms column lists the number of modelled atoms in the group and the number defined in the chemical component dictionary. The B-factors column lists the minimum, median, 95<sup>th</sup> percentile and maximum values of B factors of atoms in the group. The column labelled 'Q < 0.9' lists the number of atoms with occupancy less than 0.9.

Mol	Type	Chain	Res	Atoms	RSCC	RSR	B-factors(Å <sup>2</sup> )	Q<0.9
2	SO4	A	408	5/5	0.51	0.13	89,89,91,91	0
2	SO4	A	401	5/5	0.54	0.15	85,87,92,92	5
6	GOL	A	410	6/6	0.60	0.13	54,55,57,58	0
2	SO4	A	407	5/5	0.75	0.13	60,62,66,68	0

*Continued on next page...*

*Continued from previous page...*

Mol	Type	Chain	Res	Atoms	RSCC	RSR	B-factors( $\text{\AA}^2$ )	Q<0.9
6	GOL	A	409	6/6	0.78	0.18	24,31,34,40	0
6	GOL	A	405	6/6	0.82	0.10	40,45,47,47	0
4	EPE	A	403	15/15	0.85	0.18	22,30,35,39	15
2	SO4	A	406	5/5	0.90	0.10	25,28,31,31	5
5	HC4	A	404	12/12	0.96	0.06	19,20,22,25	0
3	CL	A	402	1/1	0.99	0.05	42,42,42,42	0

## 6.5 Other polymers [i](#)

There are no such residues in this entry.