



Full wwPDB EM Validation Report ⓘ

Nov 11, 2024 – 06:37 AM EST

PDB ID : 8F7T
EMDB ID : EMD-28910
Title : Glycan-Base ConC Env Trimer
Authors : Olia, A.S.; Kwong, P.D.
Deposited on : 2022-11-20
Resolution : 4.10 Å(reported)

This is a Full wwPDB EM Validation Report for a publicly released PDB entry.

We welcome your comments at validation@mail.wwpdb.org

A user guide is available at

<https://www.wwpdb.org/validation/2017/EMValidationReportHelp>

with specific help available everywhere you see the ⓘ symbol.

The types of validation reports are described at

<http://www.wwpdb.org/validation/2017/FAQs#types>.

The following versions of software and data (see [references ⓘ](#)) were used in the production of this report:

EMDB validation analysis : 0.0.1.dev113
Mogul : 2022.3.0, CSD as543be (2022)
MolProbity : 4.02b-467
Percentile statistics : 20231227.v01 (using entries in the PDB archive December 27th 2023)
MapQ : 1.9.13
Ideal geometry (proteins) : Engh & Huber (2001)
Ideal geometry (DNA, RNA) : Parkinson et al. (1996)
Validation Pipeline (wwPDB-VP) : 2.39

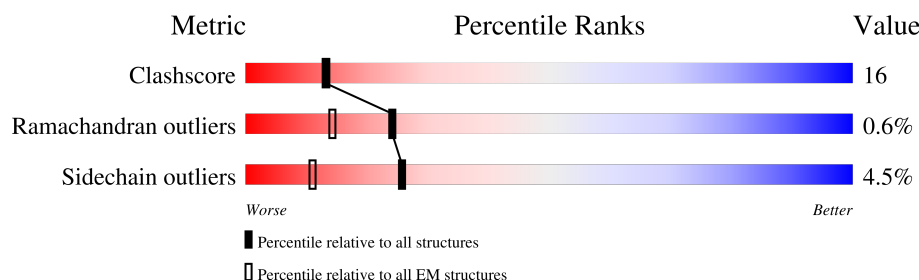
1 Overall quality at a glance

The following experimental techniques were used to determine the structure:

ELECTRON MICROSCOPY

The reported resolution of this entry is 4.10 Å.

Percentile scores (ranging between 0-100) for global validation metrics of the entry are shown in the following graphic. The table shows the number of entries on which the scores are based.




Metric	Whole archive (#Entries)	EM structures (#Entries)
Clashscore	210492	15764
Ramachandran outliers	207382	16835
Sidechain outliers	206894	16415

The table below summarises the geometric issues observed across the polymeric chains and their fit to the map. The red, orange, yellow and green segments of the bar indicate the fraction of residues that contain outliers for ≥ 3 , 2, 1 and 0 types of geometric quality criteria respectively. A grey segment represents the fraction of residues that are not modelled. The numeric value for each fraction is indicated below the corresponding segment, with a dot representing fractions $\leq 5\%$. The upper red bar (where present) indicates the fraction of residues that have poor fit to the EM map (all-atom inclusion $< 40\%$). The numeric value is given above the bar.

Mol	Chain	Length	Quality of chain
1	A	156	
1	B	156	
1	D	156	
2	C	479	
2	E	479	
2	G	479	
3	I	2	
3	K	2	

Continued on next page...

Continued from previous page...

Mol	Chain	Length	Quality of chain
3	L	2	 A horizontal bar chart showing the quality of chain L. The bar is divided into two segments: a red segment on the left and a yellow segment on the right. The red segment is labeled '50%' and the yellow segment is labeled '100%'. The total length of the bar represents 100% of the chain's quality.

2 Entry composition [i](#)

There are 4 unique types of molecules in this entry. The entry contains 13326 atoms, of which 0 are hydrogens and 0 are deuteriums.

In the tables below, the AltConf column contains the number of residues with at least one atom in alternate conformation and the Trace column contains the number of residues modelled with at most 2 atoms.

- Molecule 1 is a protein called HIV-1 Env gp41.

Mol	Chain	Residues	Atoms					AltConf	Trace
1	A	121	Total	C	N	O	S	0	0
			971	615	165	185	6		
1	B	121	Total	C	N	O	S	0	0
			971	615	165	185	6		
1	D	121	Total	C	N	O	S	0	0
			971	615	165	185	6		

- Molecule 2 is a protein called HIV-1 Env gp120.

Mol	Chain	Residues	Atoms					AltConf	Trace
2	C	426	Total	C	N	O	S	0	0
			3373	2121	588	634	30		
2	E	426	Total	C	N	O	S	0	0
			3373	2121	588	634	30		
2	G	426	Total	C	N	O	S	0	0
			3373	2121	588	634	30		

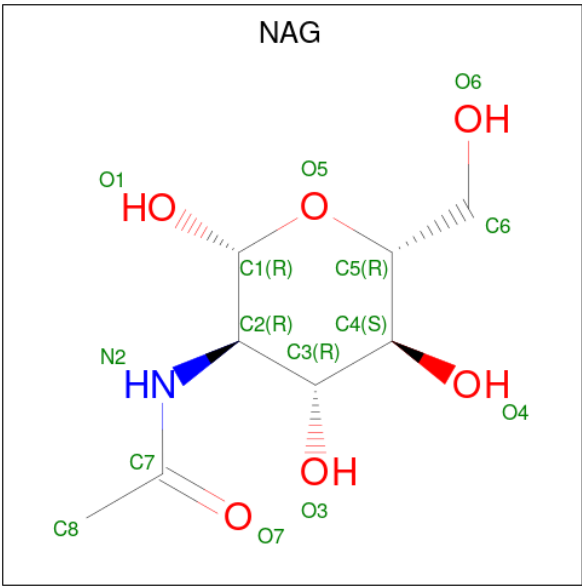
- Molecule 3 is an oligosaccharide called 2-acetamido-2-deoxy-beta-D-glucopyranose-(1-6)-2-acetamido-2-deoxy-beta-D-glucopyranose.



Mol	Chain	Residues	Atoms				AltConf	Trace
3	I	2	Total	C	N	O	0	0
			28	16	2	10		
3	K	2	Total	C	N	O	0	0
			28	16	2	10		
3	L	2	Total	C	N	O	0	0
			28	16	2	10		

- Molecule 4 is 2-acetamido-2-deoxy-beta-D-glucopyranose (three-letter code: NAG) (formula:

C₈H₁₅NO₆).



Mol	Chain	Residues	Atoms				AltConf
4	A	1	Total	C	N	O	0
			14	8	1	5	
4	B	1	Total	C	N	O	0
			14	8	1	5	
4	C	1	Total	C	N	O	0
			14	8	1	5	
4	C	1	Total	C	N	O	0
			14	8	1	5	
4	C	1	Total	C	N	O	0
			14	8	1	5	
4	C	1	Total	C	N	O	0
			14	8	1	5	
4	D	1	Total	C	N	O	0
			14	8	1	5	
4	E	1	Total	C	N	O	0
			14	8	1	5	
4	E	1	Total	C	N	O	0
			14	8	1	5	
4	E	1	Total	C	N	O	0
			14	8	1	5	
4	E	1	Total	C	N	O	0
			14	8	1	5	
4	G	1	Total	C	N	O	0
			14	8	1	5	
4	G	1	Total	C	N	O	0
			14	8	1	5	

Continued on next page...

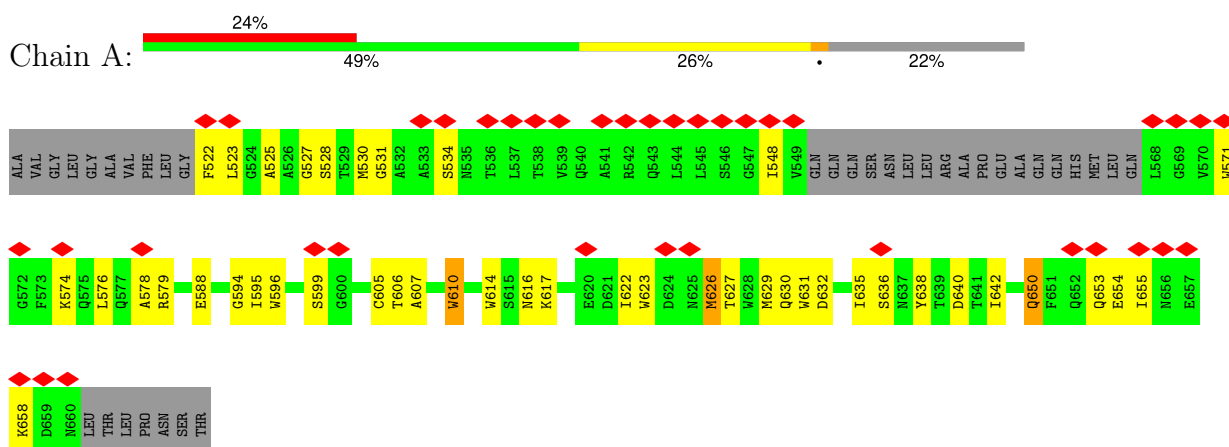
Continued from previous page...

Mol	Chain	Residues	Atoms				AltConf
4	G	1	Total	C	N	O	0
			14	8	1	5	
4	G	1	Total	C	N	O	0
			14	8	1	5	

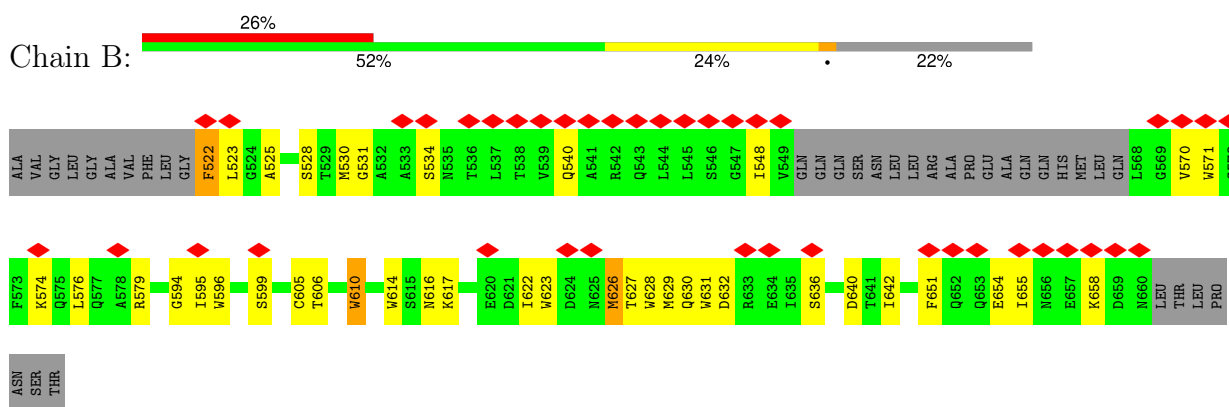
3 Residue-property plots [i](#)

These plots are drawn for all protein, RNA, DNA and oligosaccharide chains in the entry. The first graphic for a chain summarises the proportions of the various outlier classes displayed in the second graphic. The second graphic shows the sequence view annotated by issues in geometry and atom inclusion in map density. Residues are color-coded according to the number of geometric quality criteria for which they contain at least one outlier: green = 0, yellow = 1, orange = 2 and red = 3 or more. A red diamond above a residue indicates a poor fit to the EM map for this residue (all-atom inclusion < 40%). Stretches of 2 or more consecutive residues without any outlier are shown as a green connector. Residues present in the sample, but not in the model, are shown in grey.

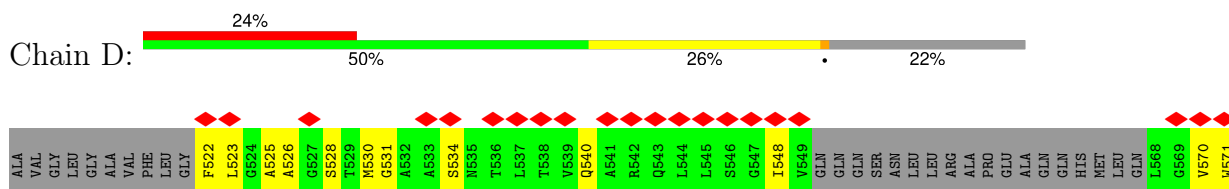
• Molecule 1: HIV-1 Env gp41

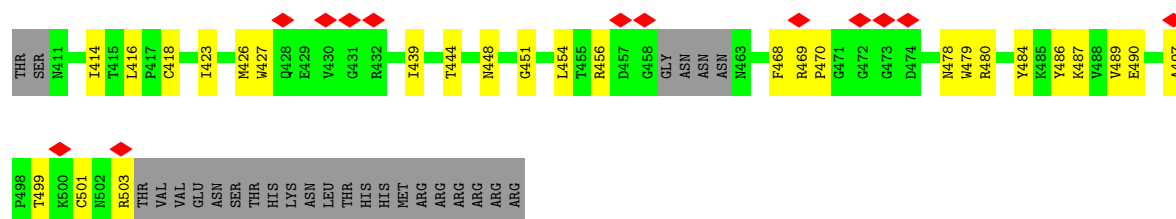


• Molecule 1: HIV-1 Env gp41

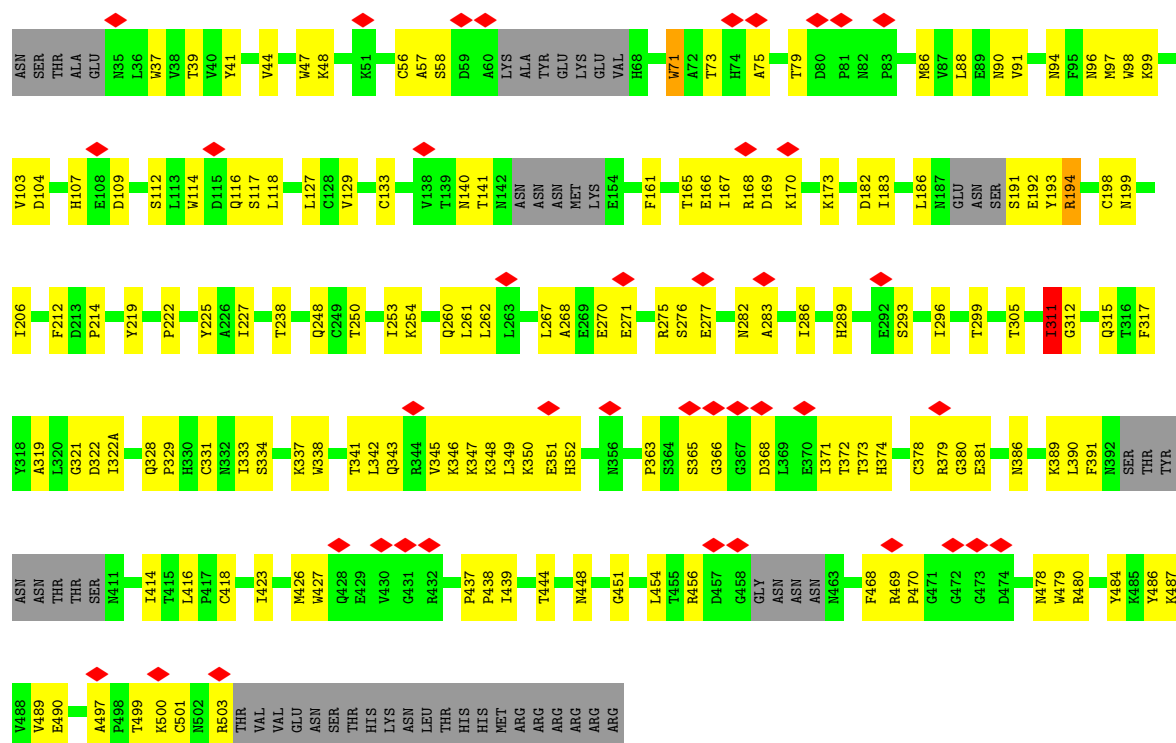


• Molecule 1: HIV-1 Env gp41





• Molecule 2: HIV-1 Env gp120



• Molecule 3: 2-acetamido-2-deoxy-beta-D-glucopyranose-(1-6)-2-acetamido-2-deoxy-beta-D-glucopyranose



• Molecule 3: 2-acetamido-2-deoxy-beta-D-glucopyranose-(1-6)-2-acetamido-2-deoxy-beta-D-glucopyranose



- Molecule 3: 2-acetamido-2-deoxy-beta-D-glucopyranose-(1-6)-2-acetamido-2-deoxy-beta-D-glucopyranose

Chain L: 



4 Experimental information

Property	Value	Source
EM reconstruction method	SINGLE PARTICLE	Depositor
Imposed symmetry	POINT, C3	Depositor
Number of particles used	12967	Depositor
Resolution determination method	FSC 0.143 CUT-OFF	Depositor
CTF correction method	PHASE FLIPPING AND AMPLITUDE CORRECTION	Depositor
Microscope	FEI TITAN KRIOS	Depositor
Voltage (kV)	300	Depositor
Electron dose ($e^-/\text{\AA}^2$)	43.54	Depositor
Minimum defocus (nm)	700	Depositor
Maximum defocus (nm)	2000	Depositor
Magnification	Not provided	
Image detector	GATAN K3 (6k x 4k)	Depositor
Maximum map value	0.263	Depositor
Minimum map value	-0.120	Depositor
Average map value	0.001	Depositor
Map value standard deviation	0.011	Depositor
Recommended contour level	0.102	Depositor
Map size (Å)	298.8, 298.8, 298.8	wwPDB
Map dimensions	360, 360, 360	wwPDB
Map angles (°)	90.0, 90.0, 90.0	wwPDB
Pixel spacing (Å)	0.83, 0.83, 0.83	Depositor

5 Model quality

5.1 Standard geometry

Bond lengths and bond angles in the following residue types are not validated in this section: NAG

The Z score for a bond length (or angle) is the number of standard deviations the observed value is removed from the expected value. A bond length (or angle) with $|Z| > 5$ is considered an outlier worth inspection. RMSZ is the root-mean-square of all Z scores of the bond lengths (or angles).

Mol	Chain	Bond lengths		Bond angles	
		RMSZ	$\# Z > 5$	RMSZ	$\# Z > 5$
1	A	0.27	0/990	0.48	0/1343
1	B	0.28	0/990	0.50	0/1343
1	D	0.28	0/990	0.50	0/1343
2	C	0.37	0/3442	0.58	1/4671 (0.0%)
2	E	0.34	0/3442	0.56	0/4671
2	G	0.34	0/3442	0.56	0/4671
All	All	0.33	0/13296	0.55	1/18042 (0.0%)

There are no bond length outliers.

All (1) bond angle outliers are listed below:

Mol	Chain	Res	Type	Atoms	Z	Observed(°)	Ideal(°)
2	C	311	ILE	N-CA-C	-5.03	97.41	111.00

There are no chirality outliers.

There are no planarity outliers.

5.2 Too-close contacts

In the following table, the Non-H and H(model) columns list the number of non-hydrogen atoms and hydrogen atoms in the chain respectively. The H(added) column lists the number of hydrogen atoms added and optimized by MolProbity. The Clashes column lists the number of clashes within the asymmetric unit, whereas Symm-Clashes lists symmetry-related clashes.

Mol	Chain	Non-H	H(model)	H(added)	Clashes	Symm-Clashes
1	A	971	0	938	52	0
1	B	971	0	938	40	0
1	D	971	0	938	36	0
2	C	3373	0	3323	123	0

Continued on next page...

Continued from previous page...

Mol	Chain	Non-H	H(model)	H(added)	Clashes	Symm-Clashes
2	E	3373	0	3323	105	0
2	G	3373	0	3323	119	0
3	I	28	0	25	2	0
3	K	28	0	25	2	0
3	L	28	0	25	2	0
4	A	14	0	13	0	0
4	B	14	0	13	0	0
4	C	56	0	52	2	0
4	D	14	0	13	0	0
4	E	56	0	52	2	0
4	G	56	0	52	2	0
All	All	13326	0	13053	423	0

The all-atom clashscore is defined as the number of clashes found per 1000 atoms (including hydrogen atoms). The all-atom clashscore for this structure is 16.

All (423) close contacts within the same asymmetric unit are listed below, sorted by their clash magnitude.

Atom-1	Atom-2	Interatomic distance (Å)	Clash overlap (Å)
2:G:311:ILE:O	2:G:315:GLN:HB2	1.21	1.31
2:G:329:PRO:HG2	2:G:418:CYS:O	1.12	1.30
2:E:311:ILE:O	2:E:315:GLN:HB2	1.24	1.30
2:C:329:PRO:CG	2:C:418:CYS:O	1.84	1.25
2:E:329:PRO:HG2	2:E:418:CYS:O	1.17	1.25
1:B:629:MET:HE1	2:G:47:TRP:CE3	1.72	1.24
2:G:329:PRO:CG	2:G:418:CYS:O	1.87	1.21
2:C:329:PRO:HG2	2:C:418:CYS:O	1.07	1.21
1:B:629:MET:HE1	2:G:47:TRP:CZ3	1.77	1.19
2:C:328:GLN:HG3	2:C:329:PRO:HD2	1.19	1.14
1:A:653:GLN:HE22	2:C:503:ARG:NH2	1.49	1.11
2:G:328:GLN:HG3	2:G:329:PRO:HD2	1.16	1.10
1:B:629:MET:CE	2:G:47:TRP:CZ3	2.32	1.10
2:E:329:PRO:CG	2:E:418:CYS:O	1.98	1.10
1:B:629:MET:CE	2:G:47:TRP:CH2	2.37	1.06
1:B:629:MET:HE1	2:G:47:TRP:CD2	1.92	1.05
1:A:629:MET:HE2	2:C:47:TRP:CZ3	1.92	1.04
1:A:629:MET:CE	2:C:47:TRP:CZ3	2.39	1.03
2:E:328:GLN:HG3	2:E:329:PRO:HD2	1.37	1.01
2:G:311:ILE:O	2:G:315:GLN:CB	2.09	0.99
2:E:311:ILE:O	2:E:315:GLN:CB	2.13	0.96
1:A:629:MET:HE1	2:C:47:TRP:CE3	2.02	0.94

Continued on next page...

Continued from previous page...

Atom-1	Atom-2	Interatomic distance (Å)	Clash overlap (Å)
1:A:629:MET:HE1	2:C:47:TRP:CD2	2.03	0.93
1:B:629:MET:HE1	2:G:47:TRP:CH2	2.04	0.89
1:B:629:MET:HE2	2:G:47:TRP:CH2	2.08	0.88
2:G:328:GLN:HG3	2:G:329:PRO:CD	2.04	0.86
2:C:328:GLN:HG3	2:C:329:PRO:CD	2.04	0.85
1:A:629:MET:CE	2:C:47:TRP:CE3	2.58	0.85
1:B:629:MET:HE2	2:G:47:TRP:CZ3	2.11	0.85
2:E:286:ILE:HB	2:E:454:LEU:O	1.78	0.84
1:A:629:MET:CE	2:C:47:TRP:CH2	2.61	0.83
2:E:330:HIS:O	2:E:330:HIS:ND1	2.12	0.83
2:C:286:ILE:HB	2:C:454:LEU:O	1.78	0.83
2:G:286:ILE:HB	2:G:454:LEU:O	1.78	0.82
1:B:629:MET:HE1	2:G:47:TRP:CE2	2.14	0.82
2:C:330:HIS:O	2:C:330:HIS:ND1	2.13	0.81
1:B:629:MET:CE	2:G:47:TRP:CZ2	2.68	0.77
1:D:548:ILE:HG13	2:E:248:GLN:HB2	1.66	0.77
2:G:293:SER:HB2	2:G:448:ASN:HB3	1.68	0.76
2:C:293:SER:HB2	2:C:448:ASN:HB3	1.68	0.75
2:C:103:VAL:HG21	2:C:480:ARG:HG2	1.68	0.75
2:G:103:VAL:HG21	2:G:480:ARG:HG2	1.68	0.75
2:E:103:VAL:HG21	2:E:480:ARG:HG2	1.68	0.75
2:E:293:SER:HB2	2:E:448:ASN:HB3	1.68	0.75
2:E:127:LEU:CD1	2:E:161:PHE:CE2	2.71	0.74
2:G:127:LEU:CD1	2:G:161:PHE:CE2	2.71	0.73
1:B:629:MET:CE	2:G:47:TRP:CE3	2.60	0.73
1:B:629:MET:HE1	2:G:47:TRP:CZ2	2.24	0.73
2:C:127:LEU:CD1	2:C:161:PHE:CE2	2.71	0.73
2:E:168:ARG:HB2	2:G:129:VAL:HG13	1.72	0.72
4:G:604:NAG:O3	4:G:604:NAG:H82	1.90	0.71
4:C:604:NAG:H82	4:C:604:NAG:O3	1.91	0.71
1:A:626:MET:SD	1:A:626:MET:N	2.64	0.70
2:E:127:LEU:HD11	2:E:161:PHE:CE2	2.26	0.70
2:C:127:LEU:HD11	2:C:161:PHE:CE2	2.27	0.70
1:A:653:GLN:NE2	2:C:503:ARG:NH2	2.32	0.70
1:A:650:GLN:O	1:A:650:GLN:NE2	2.23	0.69
4:E:604:NAG:H82	4:E:604:NAG:O3	1.91	0.69
1:B:626:MET:SD	1:B:626:MET:N	2.64	0.69
2:C:329:PRO:HG3	2:C:418:CYS:O	1.92	0.69
1:A:629:MET:HE1	2:C:47:TRP:CE2	2.26	0.69
2:G:127:LEU:HD11	2:G:161:PHE:CE2	2.26	0.68
2:C:168:ARG:HB2	2:E:129:VAL:HG13	1.77	0.67

Continued on next page...

Continued from previous page...

Atom-1	Atom-2	Interatomic distance (Å)	Clash overlap (Å)
2:E:225:TYR:HE1	2:E:490:GLU:HB3	1.59	0.67
1:A:606:THR:OG1	2:C:38:VAL:O	2.11	0.67
2:C:129:VAL:HG13	2:G:168:ARG:HB2	1.76	0.67
2:G:311:ILE:O	2:G:315:GLN:O	2.13	0.67
2:C:225:TYR:HE1	2:C:490:GLU:HB3	1.59	0.66
2:G:225:TYR:HE1	2:G:490:GLU:HB3	1.59	0.66
2:G:329:PRO:HG3	2:G:418:CYS:O	1.93	0.66
1:A:522:PHE:HD1	1:A:523:LEU:HD12	1.61	0.66
1:B:632:ASP:O	1:B:636:SER:N	2.29	0.65
2:C:98:TRP:CD1	2:C:277:GLU:HG2	2.31	0.65
2:E:98:TRP:CD1	2:E:277:GLU:HG2	2.31	0.65
1:D:605:CYS:HA	2:E:39:THR:HG22	1.78	0.65
2:G:222:PRO:HG2	2:G:225:TYR:HD2	1.62	0.65
2:C:222:PRO:HG2	2:C:225:TYR:HD2	1.62	0.65
2:E:222:PRO:HG2	2:E:225:TYR:HD2	1.62	0.65
2:G:98:TRP:CD1	2:G:277:GLU:HG2	2.31	0.65
2:G:57:ALA:HB1	2:G:79:THR:HG22	1.79	0.64
2:C:97:MET:HE2	2:C:275:ARG:HD3	1.80	0.64
1:A:548:ILE:HG13	2:C:248:GLN:HB2	1.80	0.64
1:A:653:GLN:HE22	2:C:503:ARG:HH22	1.41	0.64
2:E:98:TRP:O	2:E:99:LYS:HD2	1.98	0.64
2:G:183:ILE:HG23	2:G:193:TYR:HB3	1.80	0.64
1:A:632:ASP:O	1:A:636:SER:N	2.31	0.64
2:C:57:ALA:HB1	2:C:79:THR:HG22	1.79	0.64
2:E:183:ILE:HG23	2:E:193:TYR:HB3	1.80	0.64
2:G:97:MET:HE2	2:G:275:ARG:HD3	1.80	0.64
2:C:183:ILE:HG23	2:C:193:TYR:HB3	1.80	0.64
2:C:333:ILE:HD13	2:C:390:LEU:HD21	1.79	0.64
2:C:312:GLY:HA3	2:C:315:GLN:HG3	1.79	0.63
2:G:98:TRP:O	2:G:99:LYS:HD2	1.98	0.63
2:C:225:TYR:CE1	2:C:490:GLU:HB3	2.33	0.63
2:E:97:MET:HE2	2:E:275:ARG:HD3	1.80	0.63
2:E:57:ALA:HB1	2:E:79:THR:HG22	1.79	0.63
2:E:225:TYR:CE1	2:E:490:GLU:HB3	2.33	0.63
2:C:98:TRP:O	2:C:99:LYS:HD2	1.98	0.63
2:E:333:ILE:HD13	2:E:390:LEU:HD21	1.79	0.63
1:D:626:MET:HE1	1:D:630:GLN:HG2	1.81	0.63
2:G:225:TYR:CE1	2:G:490:GLU:HB3	2.33	0.63
2:G:333:ILE:HD13	2:G:390:LEU:HD21	1.79	0.62
1:A:605:CYS:HA	2:C:39:THR:HG22	1.82	0.61
2:G:182:ASP:OD1	2:G:423:ILE:HD12	2.01	0.60

Continued on next page...

Continued from previous page...

Atom-1	Atom-2	Interatomic distance (Å)	Clash overlap (Å)
2:E:182:ASP:OD1	2:E:423:ILE:HD12	2.01	0.60
2:C:182:ASP:OD1	2:C:423:ILE:HD12	2.01	0.60
2:E:311:ILE:O	2:E:315:GLN:O	2.20	0.60
2:C:390:LEU:HD11	2:C:416:LEU:HD11	1.83	0.60
2:E:98:TRP:CE2	2:E:277:GLU:HA	2.37	0.60
2:E:328:GLN:HG3	2:E:329:PRO:CD	2.22	0.60
1:A:607:ALA:H	2:C:503:ARG:HH21	1.50	0.59
1:A:629:MET:HE1	2:C:47:TRP:CZ3	2.23	0.59
2:G:98:TRP:CE2	2:G:277:GLU:HA	2.37	0.59
2:E:390:LEU:HD11	2:E:416:LEU:HD11	1.83	0.59
2:G:390:LEU:HD11	2:G:416:LEU:HD11	1.83	0.59
2:C:311:ILE:O	2:C:315:GLN:HB2	2.03	0.59
2:E:311:ILE:O	2:E:311:ILE:HG22	2.02	0.59
1:B:605:CYS:HA	2:G:39:THR:HG22	1.83	0.59
2:C:98:TRP:CE2	2:C:277:GLU:HA	2.37	0.59
2:G:48:LYS:HB3	2:G:490:GLU:HG3	1.85	0.59
3:K:2:NAG:H3	3:K:2:NAG:H83	1.84	0.59
2:C:41:TYR:HE1	2:C:497:ALA:HB3	1.67	0.58
2:C:311:ILE:O	2:C:311:ILE:HG22	2.03	0.58
2:G:311:ILE:O	2:G:311:ILE:HG22	2.03	0.58
2:E:41:TYR:HE1	2:E:497:ALA:HB3	1.67	0.58
1:A:530:MET:HB2	1:A:623:TRP:HA	1.85	0.58
1:A:640:ASP:N	1:A:640:ASP:OD1	2.37	0.58
2:C:48:LYS:HB3	2:C:490:GLU:HG3	1.85	0.58
3:L:2:NAG:H83	3:L:2:NAG:H3	1.85	0.58
3:I:2:NAG:H3	3:I:2:NAG:H83	1.84	0.58
2:C:282:ASN:OD1	2:C:283:ALA:N	2.37	0.57
2:E:267:LEU:HD21	2:E:293:SER:HB3	1.87	0.57
1:B:655:ILE:HD12	1:B:658:LYS:HD3	1.86	0.57
1:B:530:MET:HB2	1:B:623:TRP:HA	1.85	0.57
2:C:267:LEU:HD21	2:C:293:SER:HB3	1.87	0.57
1:D:594:GLY:HA2	1:D:599:SER:HB2	1.87	0.57
2:E:48:LYS:HB3	2:E:490:GLU:HG3	1.85	0.57
2:E:282:ASN:OD1	2:E:283:ALA:N	2.37	0.57
2:G:41:TYR:HE1	2:G:497:ALA:HB3	1.67	0.57
2:G:267:LEU:HD21	2:G:293:SER:HB3	1.87	0.57
2:G:99:LYS:HE3	2:G:99:LYS:HA	1.87	0.57
2:G:282:ASN:OD1	2:G:283:ALA:N	2.38	0.56
1:B:640:ASP:OD1	1:B:640:ASP:N	2.38	0.56
2:C:99:LYS:HA	2:C:99:LYS:HE3	1.87	0.56
1:D:632:ASP:O	1:D:636:SER:N	2.39	0.56

Continued on next page...

Continued from previous page...

Atom-1	Atom-2	Interatomic distance (Å)	Clash overlap (Å)
1:D:626:MET:CE	1:D:630:GLN:HG2	2.36	0.55
2:G:322:ASP:OD1	2:G:322(A):ILE:N	2.39	0.55
1:D:525:ALA:O	1:D:528:SER:N	2.36	0.55
2:E:56:CYS:SG	2:E:57:ALA:N	2.80	0.55
1:D:653:GLN:OE1	2:E:503:ARG:NH2	2.39	0.55
2:E:363:PRO:O	2:E:469:ARG:NH1	2.36	0.55
2:G:312:GLY:HA3	2:G:315:GLN:HG3	1.88	0.55
1:B:627:THR:OG1	1:B:630:GLN:OE1	2.25	0.55
2:E:99:LYS:HE3	2:E:99:LYS:HA	1.87	0.55
2:E:186:LEU:HD23	2:E:186:LEU:H	1.72	0.55
2:G:391:PHE:CE2	2:G:470:PRO:HG3	2.42	0.55
1:A:627:THR:OG1	1:A:630:GLN:OE1	2.24	0.55
2:E:322:ASP:OD1	2:E:322(A):ILE:N	2.39	0.55
2:G:296:ILE:HG13	2:G:333:ILE:HG13	1.90	0.54
1:D:522:PHE:HD1	1:D:523:LEU:HD12	1.73	0.54
2:E:391:PHE:CE2	2:E:470:PRO:HG3	2.42	0.54
2:C:322:ASP:OD1	2:C:322(A):ILE:N	2.39	0.54
1:D:640:ASP:OD1	1:D:640:ASP:N	2.37	0.54
2:C:56:CYS:SG	2:C:57:ALA:N	2.80	0.54
2:G:56:CYS:SG	2:G:57:ALA:N	2.80	0.54
2:C:391:PHE:CE2	2:C:470:PRO:HG3	2.42	0.54
1:A:525:ALA:O	1:A:528:SER:N	2.38	0.53
1:B:525:ALA:O	1:B:528:SER:N	2.35	0.53
2:C:331:CYS:HB2	2:C:416:LEU:HB2	1.91	0.53
2:E:296:ILE:HG13	2:E:333:ILE:HG13	1.90	0.53
2:G:186:LEU:HD23	2:G:186:LEU:H	1.72	0.53
2:C:186:LEU:H	2:C:186:LEU:HD23	1.72	0.53
2:G:363:PRO:O	2:G:469:ARG:NH1	2.36	0.53
2:C:161:PHE:O	2:C:173:LYS:O	2.27	0.53
2:C:296:ILE:HG13	2:C:333:ILE:HG13	1.90	0.53
1:A:574:LYS:NZ	2:C:109:ASP:OD2	2.36	0.53
1:D:626:MET:HE2	1:D:631:TRP:H	1.73	0.53
1:B:574:LYS:NZ	2:G:109:ASP:OD2	2.36	0.53
1:B:629:MET:CE	2:G:47:TRP:CE2	2.88	0.53
1:D:570:VAL:HG22	2:E:116:GLN:OE1	2.08	0.53
2:E:161:PHE:O	2:E:173:LYS:O	2.27	0.53
1:D:530:MET:HB3	1:D:623:TRP:HA	1.91	0.53
1:A:629:MET:HE3	2:C:47:TRP:CH2	2.41	0.52
1:B:548:ILE:HG13	2:G:248:GLN:HB2	1.90	0.52
2:G:140:ASN:OD1	2:G:141:THR:N	2.43	0.52
2:E:140:ASN:OD1	2:E:141:THR:N	2.43	0.52

Continued on next page...

Continued from previous page...

Atom-1	Atom-2	Interatomic distance (Å)	Clash overlap (Å)
2:E:165:THR:HG23	2:E:166:GLU:HG2	1.91	0.52
2:E:331:CYS:HB2	2:E:416:LEU:HB2	1.91	0.52
1:B:531:GLY:O	1:B:534:SER:OG	2.24	0.52
2:C:140:ASN:OD1	2:C:141:THR:N	2.43	0.52
1:D:531:GLY:O	1:D:534:SER:OG	2.24	0.52
2:G:161:PHE:O	2:G:173:LYS:O	2.27	0.52
1:D:654:GLU:O	1:D:658:LYS:N	2.42	0.52
2:E:39:THR:HG21	2:E:499:THR:HG22	1.92	0.52
2:E:378:CYS:SG	2:E:379:ARG:N	2.82	0.52
2:G:39:THR:HG21	2:G:499:THR:HG22	1.92	0.52
2:G:169:ASP:OD1	2:G:170:LYS:NZ	2.43	0.52
1:D:522:PHE:CZ	1:D:548:ILE:HG12	2.45	0.52
2:E:276:SER:HB2	2:E:286:ILE:HG12	1.91	0.52
2:G:262:LEU:HD12	2:G:451:GLY:HA3	1.92	0.52
2:G:276:SER:HB2	2:G:286:ILE:HG12	1.91	0.52
2:G:331:CYS:HB2	2:G:416:LEU:HB2	1.91	0.52
2:E:312:GLY:HA3	2:E:315:GLN:HG3	1.93	0.51
1:B:594:GLY:HA2	1:B:599:SER:HB2	1.92	0.51
2:C:165:THR:HG23	2:C:166:GLU:HG2	1.91	0.51
2:C:262:LEU:HD12	2:C:451:GLY:HA3	1.92	0.51
2:C:276:SER:HB2	2:C:286:ILE:HG12	1.91	0.51
2:G:47:TRP:HD1	2:G:489:VAL:HG11	1.75	0.51
2:C:39:THR:HG21	2:C:499:THR:HG22	1.92	0.51
2:C:363:PRO:O	2:C:469:ARG:NH1	2.36	0.51
2:C:378:CYS:SG	2:C:379:ARG:N	2.82	0.51
1:D:626:MET:HE2	1:D:631:TRP:N	2.26	0.51
2:G:165:THR:HG23	2:G:166:GLU:HG2	1.91	0.51
2:C:349:LEU:HD23	2:C:468:PHE:CE2	2.46	0.51
2:E:169:ASP:OD1	2:E:170:LYS:NZ	2.43	0.51
2:C:169:ASP:OD1	2:C:170:LYS:NZ	2.43	0.51
2:E:262:LEU:HD12	2:E:451:GLY:HA3	1.92	0.50
2:G:341:THR:O	2:G:345:VAL:HG12	2.12	0.50
1:B:651:PHE:HA	1:B:654:GLU:HG2	1.93	0.50
1:D:595:ILE:HG13	1:D:596:TRP:CD1	2.47	0.50
2:E:47:TRP:HD1	2:E:489:VAL:HG11	1.75	0.50
1:A:655:ILE:HD12	1:A:658:LYS:HD3	1.93	0.50
2:G:378:CYS:SG	2:G:379:ARG:N	2.82	0.50
1:B:595:ILE:HG13	1:B:596:TRP:CD1	2.47	0.50
1:D:595:ILE:O	1:D:650:GLN:HG2	2.12	0.50
2:E:341:THR:O	2:E:345:VAL:HG12	2.11	0.50
2:E:349:LEU:HD23	2:E:468:PHE:CE2	2.46	0.50

Continued on next page...

Continued from previous page...

Atom-1	Atom-2	Interatomic distance (Å)	Clash overlap (Å)
1:A:531:GLY:O	1:A:534:SER:OG	2.25	0.50
1:A:594:GLY:HA2	1:A:599:SER:HB2	1.94	0.49
2:C:47:TRP:HD1	2:C:489:VAL:HG11	1.75	0.49
2:G:349:LEU:HD23	2:G:468:PHE:CE2	2.46	0.49
1:A:650:GLN:HE21	1:A:650:GLN:C	2.13	0.49
1:A:654:GLU:O	1:A:658:LYS:N	2.45	0.49
2:C:268:ALA:HB2	2:C:289:HIS:HB3	1.95	0.49
2:C:341:THR:O	2:C:345:VAL:HG12	2.12	0.49
2:C:389:LYS:HB3	2:C:414:ILE:HD11	1.95	0.49
1:A:623:TRP:HH2	2:C:41:TYR:HH	1.59	0.49
1:B:614:TRP:CZ3	1:B:642:ILE:HG12	2.47	0.49
2:C:317:PHE:CE2	2:C:319:ALA:HB2	2.48	0.49
4:E:603:NAG:O7	4:E:603:NAG:H3	2.13	0.49
2:G:268:ALA:HB2	2:G:289:HIS:HB3	1.94	0.49
2:G:317:PHE:CE2	2:G:319:ALA:HB2	2.48	0.49
1:A:576:LEU:HD12	1:A:579:ARG:HE	1.78	0.49
2:E:389:LYS:HB3	2:E:414:ILE:HD11	1.95	0.49
2:G:389:LYS:HB3	2:G:414:ILE:HD11	1.95	0.49
2:E:97:MET:HG3	2:E:484:TYR:HB2	1.95	0.48
2:E:268:ALA:HB2	2:E:289:HIS:HB3	1.94	0.48
1:A:614:TRP:CZ3	1:A:642:ILE:HG12	2.49	0.48
2:C:312:GLY:O	2:C:315:GLN:HG2	2.13	0.48
2:E:317:PHE:CE2	2:E:319:ALA:HB2	2.48	0.48
4:C:603:NAG:O7	4:C:603:NAG:H3	2.13	0.48
1:D:617:LYS:HB3	1:D:622:ILE:HD11	1.95	0.48
4:G:603:NAG:O7	4:G:603:NAG:H3	2.13	0.48
1:A:629:MET:HE2	2:C:47:TRP:CE3	2.33	0.48
2:C:41:TYR:CE1	2:C:497:ALA:HB3	2.49	0.48
2:C:107:HIS:HB2	2:C:479:TRP:CD1	2.49	0.48
2:E:107:HIS:HB2	2:E:479:TRP:CD1	2.49	0.48
2:G:97:MET:HG3	2:G:484:TYR:HB2	1.95	0.47
2:C:305:THR:O	2:C:321:GLY:N	2.43	0.47
1:A:610:TRP:HH2	1:A:631:TRP:HZ2	1.61	0.47
1:D:626:MET:HE3	1:D:627:THR:C	2.35	0.47
1:D:655:ILE:HD12	1:D:658:LYS:HD3	1.94	0.47
2:G:39:THR:OG1	2:G:497:ALA:O	2.30	0.47
2:C:97:MET:HG3	2:C:484:TYR:HB2	1.95	0.47
2:E:194:ARG:HH21	2:E:199:ASN:HB2	1.79	0.47
1:D:526:ALA:HB2	2:E:45:PRO:HB2	1.97	0.47
2:G:107:HIS:HB2	2:G:479:TRP:CD1	2.49	0.47
1:A:629:MET:CE	2:C:47:TRP:CZ2	2.98	0.47

Continued on next page...

Continued from previous page...

Atom-1	Atom-2	Interatomic distance (Å)	Clash overlap (Å)
1:B:610:TRP:HH2	1:B:631:TRP:HZ2	1.62	0.47
2:E:227:ILE:HA	2:E:487:LYS:O	2.14	0.47
2:E:348:LYS:O	2:E:351:GLU:HB2	2.15	0.47
1:A:605:CYS:HB3	2:C:501:CYS:HB3	1.83	0.47
1:D:614:TRP:CZ3	1:D:642:ILE:HG12	2.50	0.47
2:C:348:LYS:O	2:C:351:GLU:HB2	2.15	0.47
2:G:227:ILE:HA	2:G:487:LYS:O	2.14	0.47
2:G:348:LYS:O	2:G:351:GLU:HB2	2.15	0.47
1:A:653:GLN:NE2	2:C:503:ARG:HH22	2.06	0.46
2:C:194:ARG:HH21	2:C:199:ASN:HB2	1.79	0.46
2:C:227:ILE:HA	2:C:487:LYS:O	2.14	0.46
2:G:41:TYR:CE1	2:G:497:ALA:HB3	2.49	0.46
1:B:576:LEU:HD12	1:B:579:ARG:HE	1.80	0.46
1:A:571:TRP:CZ2	2:C:113:LEU:HD11	2.51	0.46
2:G:368:ASP:O	2:G:372:THR:HG23	2.16	0.46
2:E:343:GLN:HA	2:E:346:LYS:HE2	1.98	0.46
2:E:222:PRO:HG2	2:E:225:TYR:CD2	2.49	0.46
2:G:191:SER:OG	2:G:192:GLU:N	2.49	0.46
2:G:194:ARG:HH21	2:G:199:ASN:HB2	1.79	0.46
1:A:629:MET:HE1	2:C:47:TRP:CH2	2.46	0.46
2:E:373:THR:HG22	2:E:386:ASN:HA	1.98	0.46
2:G:343:GLN:HA	2:G:346:LYS:HE2	1.98	0.46
2:C:161:PHE:CD1	2:C:161:PHE:N	2.84	0.45
2:E:191:SER:OG	2:E:192:GLU:N	2.49	0.45
2:E:368:ASP:O	2:E:372:THR:HG23	2.16	0.45
1:D:596:TRP:CD1	1:D:596:TRP:N	2.84	0.45
2:E:305:THR:O	2:E:321:GLY:N	2.43	0.45
1:B:623:TRP:HH2	2:G:41:TYR:HH	1.63	0.45
2:C:343:GLN:HA	2:C:346:LYS:HE2	1.98	0.45
2:G:373:THR:HG22	2:G:386:ASN:HA	1.98	0.45
1:D:522:PHE:HA	1:D:540:GLN:HG3	1.99	0.45
1:B:617:LYS:HB3	1:B:622:ILE:HD11	1.98	0.45
2:G:260:GLN:HB3	2:G:470:PRO:HB3	1.99	0.45
2:C:373:THR:HG22	2:C:386:ASN:HA	1.98	0.45
1:A:629:MET:HE1	2:C:47:TRP:CZ2	2.51	0.45
2:C:368:ASP:O	2:C:372:THR:HG23	2.16	0.45
2:E:260:GLN:HB3	2:E:470:PRO:HB3	1.99	0.45
2:E:58:SER:OG	2:E:73:THR:HG23	2.17	0.45
2:E:161:PHE:N	2:E:161:PHE:CD1	2.84	0.45
2:G:305:THR:O	2:G:321:GLY:N	2.43	0.45
1:A:578:ALA:HB1	2:C:222:PRO:HB3	1.99	0.45

Continued on next page...

Continued from previous page...

Atom-1	Atom-2	Interatomic distance (Å)	Clash overlap (Å)
1:B:596:TRP:CD1	1:B:596:TRP:N	2.84	0.45
2:G:312:GLY:HA3	2:G:315:GLN:CG	2.47	0.45
2:G:88:LEU:O	2:G:91:VAL:HG22	2.17	0.44
1:B:570:VAL:HG22	2:G:116:GLN:OE1	2.18	0.44
2:C:365:SER:OG	2:C:366:GLY:N	2.51	0.44
2:E:88:LEU:O	2:E:91:VAL:HG22	2.17	0.44
2:G:58:SER:OG	2:G:73:THR:HG23	2.17	0.44
1:A:595:ILE:HG13	1:A:596:TRP:CD1	2.52	0.44
1:A:617:LYS:HB3	1:A:622:ILE:HD11	1.98	0.44
2:C:47:TRP:CD1	2:C:489:VAL:HG11	2.53	0.44
2:G:365:SER:OG	2:G:366:GLY:N	2.51	0.44
2:C:260:GLN:HB3	2:C:470:PRO:HB3	1.99	0.44
2:E:41:TYR:CE1	2:E:497:ALA:HB3	2.49	0.44
2:E:260:GLN:NE2	2:E:371:ILE:O	2.51	0.44
2:E:261:LEU:HD12	2:E:374:HIS:CG	2.53	0.44
2:G:161:PHE:CD1	2:G:161:PHE:N	2.84	0.44
1:A:522:PHE:CZ	1:A:548:ILE:HG12	2.53	0.44
2:C:378:CYS:O	2:C:380:GLY:N	2.50	0.44
2:E:37:TRP:HD1	2:E:501:CYS:H	1.66	0.44
1:D:630:GLN:HA	1:D:633:ARG:HB3	2.00	0.44
2:C:260:GLN:NE2	2:C:371:ILE:O	2.51	0.43
2:C:37:TRP:HD1	2:C:501:CYS:H	1.66	0.43
2:C:58:SER:OG	2:C:73:THR:HG23	2.17	0.43
2:G:260:GLN:NE2	2:G:371:ILE:O	2.51	0.43
2:G:261:LEU:HD12	2:G:374:HIS:CG	2.53	0.43
1:B:522:PHE:CD1	1:B:523:LEU:HD12	2.53	0.43
1:B:628:TRP:CZ2	2:G:44:VAL:HG11	2.54	0.43
2:E:114:TRP:CD1	2:E:427:TRP:HH2	2.37	0.43
2:G:47:TRP:CD1	2:G:489:VAL:HG11	2.53	0.43
2:G:96:ASN:HA	2:G:238:THR:HG22	2.00	0.43
1:A:595:ILE:O	1:A:650:GLN:HG2	2.18	0.43
2:C:261:LEU:HD12	2:C:374:HIS:CG	2.53	0.43
1:D:571:TRP:CZ2	2:E:113:LEU:HD11	2.53	0.43
2:G:114:TRP:CD1	2:G:427:TRP:HH2	2.37	0.43
2:C:114:TRP:CD1	2:C:427:TRP:HH2	2.37	0.43
2:G:500:LYS:H	2:G:500:LYS:HG2	1.67	0.43
2:G:437:PRO:HA	2:G:438:PRO:HD3	1.93	0.43
2:C:105:GLN:HE21	2:C:105:GLN:HB2	1.63	0.43
2:C:191:SER:OG	2:C:192:GLU:N	2.49	0.43
3:L:1:NAG:H5	3:L:1:NAG:HN2	1.84	0.43
2:C:88:LEU:O	2:C:91:VAL:HG22	2.17	0.43

Continued on next page...

Continued from previous page...

Atom-1	Atom-2	Interatomic distance (Å)	Clash overlap (Å)
2:E:96:ASN:HA	2:E:238:THR:HG22	2.00	0.43
2:G:222:PRO:HG2	2:G:225:TYR:CD2	2.49	0.43
2:C:96:ASN:HA	2:C:238:THR:HG22	2.00	0.43
1:D:574:LYS:NZ	2:E:109:ASP:OD2	2.47	0.43
2:C:104:ASP:OD1	2:C:104:ASP:N	2.51	0.42
2:C:299:THR:OG1	2:C:444:THR:HG23	2.19	0.42
2:E:365:SER:OG	2:E:366:GLY:N	2.51	0.42
2:G:37:TRP:HD1	2:G:501:CYS:H	1.66	0.42
2:G:104:ASP:OD1	2:G:104:ASP:N	2.51	0.42
3:I:1:NAG:HN2	3:I:1:NAG:H5	1.84	0.42
1:A:571:TRP:HD1	2:C:75:ALA:HB3	1.83	0.42
2:G:299:THR:OG1	2:G:444:THR:HG23	2.20	0.42
3:K:1:NAG:HN2	3:K:1:NAG:H5	1.84	0.42
2:G:378:CYS:O	2:G:380:GLY:N	2.50	0.42
2:E:104:ASP:OD1	2:E:104:ASP:N	2.51	0.42
1:D:653:GLN:HE22	2:E:503:ARG:CZ	2.33	0.42
1:B:571:TRP:HD1	2:G:75:ALA:HB3	1.85	0.42
1:B:606:THR:HA	2:G:503:ARG:NH2	2.35	0.42
2:E:299:THR:OG1	2:E:444:THR:HG23	2.19	0.42
2:E:347:LYS:HD3	2:E:350:LYS:HE3	2.01	0.42
2:E:378:CYS:O	2:E:380:GLY:N	2.50	0.42
2:C:118:LEU:HD13	2:C:206:ILE:HG22	2.02	0.42
1:A:527:GLY:HA3	2:C:89:GLU:O	2.20	0.42
2:C:39:THR:OG1	2:C:497:ALA:O	2.30	0.42
1:D:605:CYS:HB3	2:E:501:CYS:HB3	1.86	0.42
2:G:347:LYS:HD3	2:G:350:LYS:HE3	2.01	0.42
2:C:437:PRO:HA	2:C:438:PRO:HD3	1.93	0.41
2:E:39:THR:OG1	2:E:497:ALA:O	2.30	0.41
2:E:47:TRP:CD1	2:E:489:VAL:HG11	2.53	0.41
2:G:118:LEU:HD13	2:G:206:ILE:HG22	2.02	0.41
1:D:530:MET:N	1:D:626:MET:O	2.53	0.41
1:D:582:ALA:HB1	2:E:223:ALA:HB3	2.02	0.41
2:E:71:TRP:HZ2	2:E:214:PRO:HA	1.86	0.41
2:E:118:LEU:HD13	2:E:206:ILE:HG22	2.02	0.41
2:C:51:LYS:HE2	2:C:51:LYS:HB2	1.90	0.41
2:C:71:TRP:HZ2	2:C:214:PRO:HA	1.86	0.41
2:C:347:LYS:HD3	2:C:350:LYS:HE3	2.01	0.41
2:C:500:LYS:H	2:C:500:LYS:HG2	1.67	0.41
2:G:71:TRP:HZ2	2:G:214:PRO:HA	1.86	0.41
1:A:614:TRP:CH2	1:A:642:ILE:HG12	2.56	0.41
2:C:222:PRO:HG2	2:C:225:TYR:CD2	2.49	0.41

Continued on next page...

Continued from previous page...

Atom-1	Atom-2	Interatomic distance (Å)	Clash overlap (Å)
2:E:369:LEU:HD12	2:E:369:LEU:HA	1.88	0.41
2:E:250:THR:HG22	2:E:486:TYR:CE1	2.56	0.41
1:A:610:TRP:HB2	1:A:614:TRP:CZ3	2.55	0.41
1:A:638:TYR:O	1:A:642:ILE:HG13	2.21	0.41
1:D:576:LEU:HD12	1:D:579:ARG:HE	1.85	0.41
2:E:98:TRP:CZ2	2:E:277:GLU:HA	2.56	0.41
2:G:250:THR:HG22	2:G:486:TYR:CE1	2.56	0.41
2:G:270:GLU:HB3	2:G:271:GLU:H	1.74	0.41
1:A:631:TRP:NE1	1:A:635:ILE:HD12	2.35	0.41
2:C:250:THR:HG22	2:C:486:TYR:CE1	2.56	0.41
1:B:654:GLU:HG3	1:B:655:ILE:N	2.36	0.40
2:C:342:LEU:HA	2:C:345:VAL:HG12	2.03	0.40
2:G:98:TRP:CZ2	2:G:277:GLU:HA	2.56	0.40
2:C:212:PHE:CZ	2:C:380:GLY:HA2	2.56	0.40
2:C:296:ILE:HD12	2:C:449:ILE:HD11	2.03	0.40
1:D:626:MET:HE3	1:D:627:THR:O	2.22	0.40
2:E:98:TRP:NE1	2:E:277:GLU:HA	2.35	0.40
2:E:381:GLU:OE2	2:E:439:ILE:HG12	2.22	0.40
1:B:605:CYS:HB3	2:G:501:CYS:HB3	1.90	0.40
2:C:381:GLU:OE2	2:C:439:ILE:HG12	2.21	0.40
1:D:578:ALA:HB1	2:E:222:PRO:HB3	2.04	0.40
2:G:212:PHE:CZ	2:G:380:GLY:HA2	2.56	0.40
2:G:342:LEU:HA	2:G:345:VAL:HG12	2.03	0.40
2:C:218:HIS:ND1	2:C:250:THR:O	2.55	0.40
2:E:357:LYS:HB3	2:E:357:LYS:HE2	1.80	0.40
2:G:98:TRP:NE1	2:G:277:GLU:HA	2.35	0.40
2:G:381:GLU:OE2	2:G:439:ILE:HG12	2.22	0.40
2:E:218:HIS:ND1	2:E:250:THR:O	2.55	0.40
2:E:279:LEU:HD13	2:E:279:LEU:HA	1.91	0.40
2:E:345:VAL:O	2:E:349:LEU:HD13	2.22	0.40
2:G:334:SER:HB3	2:G:337:LYS:HB2	2.04	0.40
2:G:338:TRP:HZ2	2:G:391:PHE:CE1	2.40	0.40

There are no symmetry-related clashes.

5.3 Torsion angles

5.3.1 Protein backbone

In the following table, the Percentiles column shows the percent Ramachandran outliers of the chain as a percentile score with respect to all PDB entries followed by that with respect to all EM

entries.

The Analysed column shows the number of residues for which the backbone conformation was analysed, and the total number of residues.

Mol	Chain	Analysed	Favoured	Allowed	Outliers	Percentiles	
1	A	117/156 (75%)	110 (94%)	7 (6%)	0	100	100
1	B	117/156 (75%)	110 (94%)	7 (6%)	0	100	100
1	D	117/156 (75%)	109 (93%)	8 (7%)	0	100	100
2	C	414/479 (86%)	362 (87%)	48 (12%)	4 (1%)	13	48
2	E	414/479 (86%)	363 (88%)	48 (12%)	3 (1%)	19	56
2	G	414/479 (86%)	363 (88%)	48 (12%)	3 (1%)	19	56
All	All	1593/1905 (84%)	1417 (89%)	166 (10%)	10 (1%)	24	59

All (10) Ramachandran outliers are listed below:

Mol	Chain	Res	Type
2	C	253	ILE
2	C	311	ILE
2	E	253	ILE
2	G	253	ILE
2	C	312	GLY
2	E	311	ILE
2	G	311	ILE
2	C	167	ILE
2	E	167	ILE
2	G	167	ILE

5.3.2 Protein sidechains ⓘ

In the following table, the Percentiles column shows the percent sidechain outliers of the chain as a percentile score with respect to all PDB entries followed by that with respect to all EM entries.

The Analysed column shows the number of residues for which the sidechain conformation was analysed, and the total number of residues.

Mol	Chain	Analysed	Rotameric	Outliers	Percentiles	
1	A	104/132 (79%)	99 (95%)	5 (5%)	21	45
1	B	104/132 (79%)	99 (95%)	5 (5%)	21	45
1	D	104/132 (79%)	99 (95%)	5 (5%)	21	45

Continued on next page...

Continued from previous page...

Mol	Chain	Analysed	Rotameric	Outliers	Percentiles	
2	C	388/438 (89%)	369 (95%)	19 (5%)	21	44
2	E	388/438 (89%)	371 (96%)	17 (4%)	24	47
2	G	388/438 (89%)	372 (96%)	16 (4%)	26	49
All	All	1476/1710 (86%)	1409 (96%)	67 (4%)	26	47

All (67) residues with a non-rotameric sidechain are listed below:

Mol	Chain	Res	Type
1	A	588	GLU
1	A	610	TRP
1	A	616	ASN
1	A	626	MET
1	A	650	GLN
1	B	522	PHE
1	B	540	GLN
1	B	610	TRP
1	B	616	ASN
1	B	626	MET
2	C	71	TRP
2	C	86	MET
2	C	90	ASN
2	C	94	ASN
2	C	112	SER
2	C	117	SER
2	C	133	CYS
2	C	194	ARG
2	C	198	CYS
2	C	219	TYR
2	C	254	LYS
2	C	310	ARG
2	C	311	ILE
2	C	315	GLN
2	C	330	HIS
2	C	352	HIS
2	C	426	MET
2	C	456	ARG
2	C	478	ASN
1	D	588	GLU
1	D	596	TRP
1	D	610	TRP
1	D	616	ASN

Continued on next page...

Continued from previous page...

Mol	Chain	Res	Type
1	D	650	GLN
2	E	71	TRP
2	E	86	MET
2	E	90	ASN
2	E	94	ASN
2	E	112	SER
2	E	117	SER
2	E	133	CYS
2	E	194	ARG
2	E	198	CYS
2	E	219	TYR
2	E	254	LYS
2	E	311	ILE
2	E	330	HIS
2	E	352	HIS
2	E	426	MET
2	E	456	ARG
2	E	478	ASN
2	G	71	TRP
2	G	86	MET
2	G	90	ASN
2	G	94	ASN
2	G	112	SER
2	G	117	SER
2	G	133	CYS
2	G	194	ARG
2	G	198	CYS
2	G	219	TYR
2	G	254	LYS
2	G	311	ILE
2	G	352	HIS
2	G	426	MET
2	G	456	ARG
2	G	478	ASN

Sometimes sidechains can be flipped to improve hydrogen bonding and reduce clashes. All (2) such sidechains are listed below:

Mol	Chain	Res	Type
1	A	650	GLN
1	A	653	GLN

5.3.3 RNA ⓘ

There are no RNA molecules in this entry.

5.4 Non-standard residues in protein, DNA, RNA chains ⓘ

There are no non-standard protein/DNA/RNA residues in this entry.

5.5 Carbohydrates ⓘ

6 monosaccharides are modelled in this entry.

In the following table, the Counts columns list the number of bonds (or angles) for which Mogul statistics could be retrieved, the number of bonds (or angles) that are observed in the model and the number of bonds (or angles) that are defined in the Chemical Component Dictionary. The Link column lists molecule types, if any, to which the group is linked. The Z score for a bond length (or angle) is the number of standard deviations the observed value is removed from the expected value. A bond length (or angle) with $|Z| > 2$ is considered an outlier worth inspection. RMSZ is the root-mean-square of all Z scores of the bond lengths (or angles).

Mol	Type	Chain	Res	Link	Bond lengths			Bond angles		
					Counts	RMSZ	# $ Z > 2$	Counts	RMSZ	# $ Z > 2$
3	NAG	I	1	2,3	14,14,15	0.85	1 (7%)	17,19,21	0.81	1 (5%)
3	NAG	I	2	3	14,14,15	0.52	0	17,19,21	1.34	2 (11%)
3	NAG	K	1	2,3	14,14,15	0.85	1 (7%)	17,19,21	0.80	1 (5%)
3	NAG	K	2	3	14,14,15	0.52	0	17,19,21	1.34	2 (11%)
3	NAG	L	1	2,3	14,14,15	0.86	1 (7%)	17,19,21	0.80	1 (5%)
3	NAG	L	2	3	14,14,15	0.53	0	17,19,21	1.34	2 (11%)

In the following table, the Chirals column lists the number of chiral outliers, the number of chiral centers analysed, the number of these observed in the model and the number defined in the Chemical Component Dictionary. Similar counts are reported in the Torsion and Rings columns. '-' means no outliers of that kind were identified.

Mol	Type	Chain	Res	Link	Chirals	Torsions	Rings
3	NAG	I	1	2,3	-	3/6/23/26	0/1/1/1
3	NAG	I	2	3	-	6/6/23/26	0/1/1/1
3	NAG	K	1	2,3	-	3/6/23/26	0/1/1/1
3	NAG	K	2	3	-	6/6/23/26	0/1/1/1
3	NAG	L	1	2,3	-	3/6/23/26	0/1/1/1
3	NAG	L	2	3	-	6/6/23/26	0/1/1/1

All (3) bond length outliers are listed below:

Mol	Chain	Res	Type	Atoms	Z	Observed(Å)	Ideal(Å)
3	L	1	NAG	C1-C2	2.65	1.56	1.52
3	K	1	NAG	C1-C2	2.62	1.55	1.52
3	I	1	NAG	C1-C2	2.61	1.55	1.52

All (9) bond angle outliers are listed below:

Mol	Chain	Res	Type	Atoms	Z	Observed(°)	Ideal(°)
3	I	2	NAG	C2-N2-C7	4.61	129.07	122.90
3	K	2	NAG	C2-N2-C7	4.58	129.04	122.90
3	L	2	NAG	C2-N2-C7	4.56	129.01	122.90
3	I	1	NAG	C1-O5-C5	2.47	115.49	112.19
3	L	1	NAG	C1-O5-C5	2.43	115.45	112.19
3	K	1	NAG	C1-O5-C5	2.43	115.44	112.19
3	I	2	NAG	C1-C2-N2	2.10	113.75	110.43
3	L	2	NAG	C1-C2-N2	2.09	113.72	110.43
3	K	2	NAG	C1-C2-N2	2.08	113.71	110.43

There are no chirality outliers.

All (27) torsion outliers are listed below:

Mol	Chain	Res	Type	Atoms
3	I	2	NAG	O5-C5-C6-O6
3	K	2	NAG	O5-C5-C6-O6
3	L	2	NAG	O5-C5-C6-O6
3	I	1	NAG	C8-C7-N2-C2
3	I	1	NAG	O7-C7-N2-C2
3	I	2	NAG	C8-C7-N2-C2
3	I	2	NAG	O7-C7-N2-C2
3	K	1	NAG	C8-C7-N2-C2
3	K	1	NAG	O7-C7-N2-C2
3	K	2	NAG	C8-C7-N2-C2
3	K	2	NAG	O7-C7-N2-C2
3	L	1	NAG	C8-C7-N2-C2
3	L	1	NAG	O7-C7-N2-C2
3	L	2	NAG	C8-C7-N2-C2
3	L	2	NAG	O7-C7-N2-C2
3	I	2	NAG	C4-C5-C6-O6
3	K	2	NAG	C4-C5-C6-O6
3	L	2	NAG	C4-C5-C6-O6
3	I	1	NAG	O5-C5-C6-O6
3	K	1	NAG	O5-C5-C6-O6

Continued on next page...

Continued from previous page...

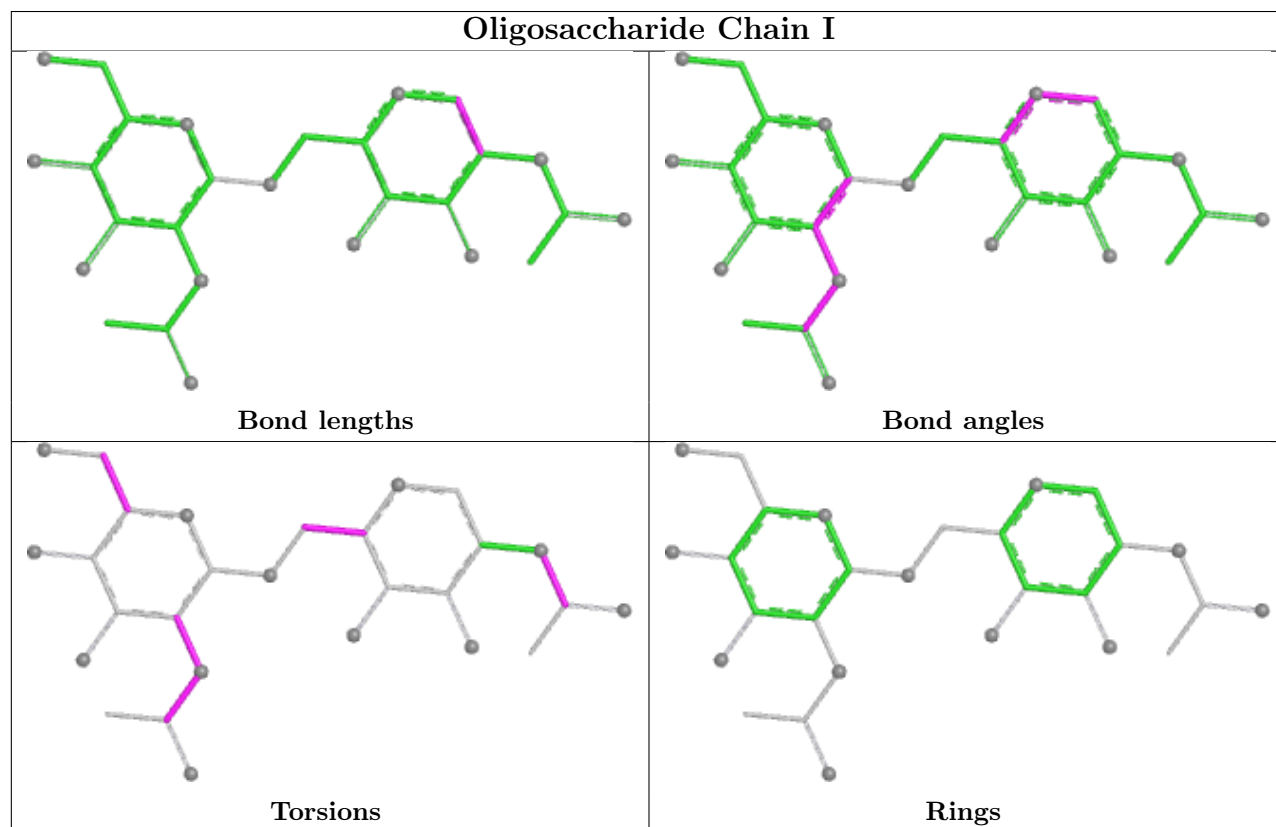
Mol	Chain	Res	Type	Atoms
3	L	1	NAG	O5-C5-C6-O6
3	I	2	NAG	C1-C2-N2-C7
3	K	2	NAG	C1-C2-N2-C7
3	L	2	NAG	C1-C2-N2-C7
3	I	2	NAG	C3-C2-N2-C7
3	K	2	NAG	C3-C2-N2-C7
3	L	2	NAG	C3-C2-N2-C7

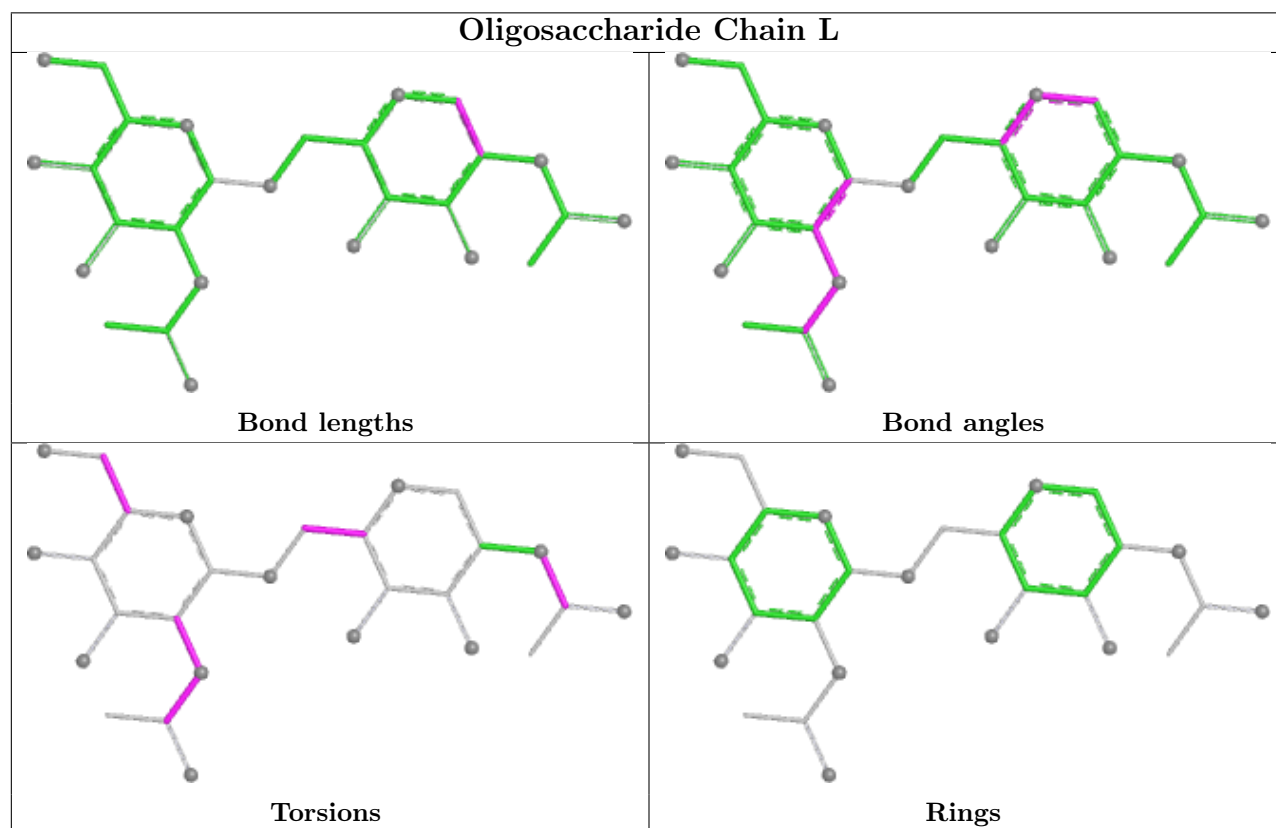
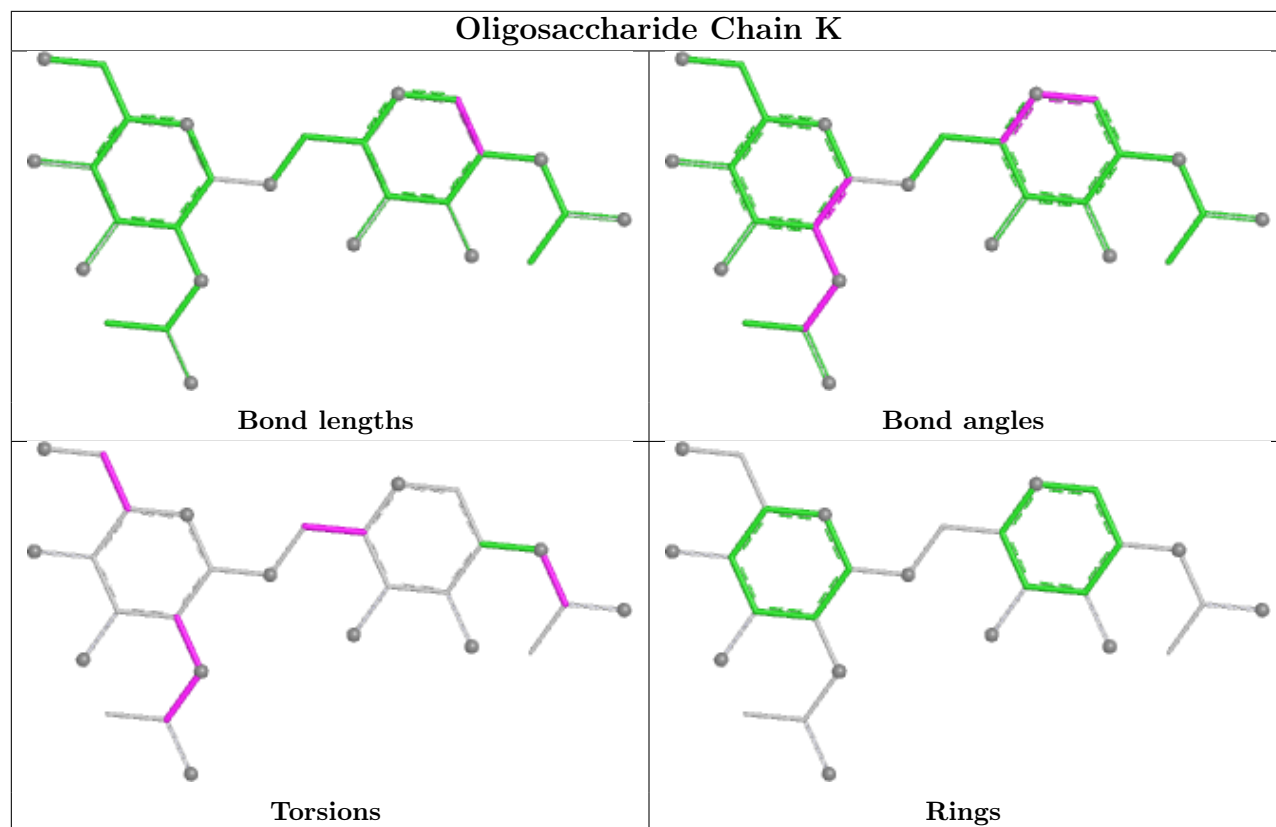
There are no ring outliers.

6 monomers are involved in 6 short contacts:

Mol	Chain	Res	Type	Clashes	Symm-Clashes
3	I	1	NAG	1	0
3	L	1	NAG	1	0
3	K	1	NAG	1	0
3	L	2	NAG	1	0
3	I	2	NAG	1	0
3	K	2	NAG	1	0

The following is a two-dimensional graphical depiction of Mogul quality analysis of bond lengths, bond angles, torsion angles, and ring geometry for oligosaccharide.





5.6 Ligand geometry

15 ligands are modelled in this entry.

In the following table, the Counts columns list the number of bonds (or angles) for which Mogul statistics could be retrieved, the number of bonds (or angles) that are observed in the model and the number of bonds (or angles) that are defined in the Chemical Component Dictionary. The Link column lists molecule types, if any, to which the group is linked. The Z score for a bond length (or angle) is the number of standard deviations the observed value is removed from the expected value. A bond length (or angle) with $|Z| > 2$ is considered an outlier worth inspection. RMSZ is the root-mean-square of all Z scores of the bond lengths (or angles).

Mol	Type	Chain	Res	Link	Bond lengths			Bond angles		
					Counts	RMSZ	# Z > 2	Counts	RMSZ	# Z > 2
4	NAG	D	701	-	14,14,15	0.38	0	17,19,21	0.69	0
4	NAG	E	602	2	14,14,15	0.17	0	17,19,21	0.39	0
4	NAG	E	601	2	14,14,15	0.27	0	17,19,21	0.48	0
4	NAG	B	701	-	14,14,15	0.38	0	17,19,21	0.70	0
4	NAG	G	603	2	14,14,15	0.52	0	17,19,21	1.40	3 (17%)
4	NAG	C	603	2	14,14,15	0.53	0	17,19,21	1.41	4 (23%)
4	NAG	C	602	2	14,14,15	0.17	0	17,19,21	0.39	0
4	NAG	E	603	2	14,14,15	0.52	0	17,19,21	1.41	4 (23%)
4	NAG	E	604	2	14,14,15	0.55	0	17,19,21	1.08	2 (11%)
4	NAG	G	601	2	14,14,15	0.27	0	17,19,21	0.48	0
4	NAG	G	604	2	14,14,15	0.54	0	17,19,21	1.08	2 (11%)
4	NAG	A	701	-	14,14,15	0.37	0	17,19,21	0.70	1 (5%)
4	NAG	C	601	2	14,14,15	0.27	0	17,19,21	0.47	0
4	NAG	G	602	2	14,14,15	0.18	0	17,19,21	0.40	0
4	NAG	C	604	2	14,14,15	0.55	0	17,19,21	1.08	2 (11%)

In the following table, the Chirals column lists the number of chiral outliers, the number of chiral centers analysed, the number of these observed in the model and the number defined in the Chemical Component Dictionary. Similar counts are reported in the Torsion and Rings columns. '-' means no outliers of that kind were identified.

Mol	Type	Chain	Res	Link	Chirals	Torsions	Rings
4	NAG	D	701	-	-	2/6/23/26	0/1/1/1
4	NAG	E	602	2	-	3/6/23/26	0/1/1/1
4	NAG	E	601	2	-	2/6/23/26	0/1/1/1
4	NAG	B	701	-	-	2/6/23/26	0/1/1/1
4	NAG	G	603	2	-	2/6/23/26	0/1/1/1
4	NAG	C	603	2	-	2/6/23/26	0/1/1/1

Continued on next page...

Continued from previous page...

Mol	Type	Chain	Res	Link	Chirals	Torsions	Rings
4	NAG	C	602	2	-	3/6/23/26	0/1/1/1
4	NAG	E	603	2	-	2/6/23/26	0/1/1/1
4	NAG	E	604	2	-	5/6/23/26	0/1/1/1
4	NAG	G	601	2	-	2/6/23/26	0/1/1/1
4	NAG	G	604	2	-	5/6/23/26	0/1/1/1
4	NAG	A	701	-	-	2/6/23/26	0/1/1/1
4	NAG	C	601	2	-	2/6/23/26	0/1/1/1
4	NAG	G	602	2	-	3/6/23/26	0/1/1/1
4	NAG	C	604	2	-	5/6/23/26	0/1/1/1

There are no bond length outliers.

All (18) bond angle outliers are listed below:

Mol	Chain	Res	Type	Atoms	Z	Observed(°)	Ideal(°)
4	E	603	NAG	O5-C1-C2	-3.03	106.61	111.29
4	G	603	NAG	O5-C1-C2	-3.02	106.62	111.29
4	C	603	NAG	O5-C1-C2	-3.00	106.64	111.29
4	E	603	NAG	C4-C3-C2	-2.41	107.48	111.02
4	G	603	NAG	C4-C3-C2	-2.39	107.51	111.02
4	E	603	NAG	C2-N2-C7	-2.39	119.69	122.90
4	C	603	NAG	C4-C3-C2	-2.39	107.51	111.02
4	C	603	NAG	C2-N2-C7	-2.35	119.76	122.90
4	G	603	NAG	C2-N2-C7	-2.33	119.77	122.90
4	C	604	NAG	C4-C3-C2	-2.25	107.73	111.02
4	G	604	NAG	C4-C3-C2	-2.23	107.76	111.02
4	E	604	NAG	C4-C3-C2	-2.19	107.81	111.02
4	A	701	NAG	C1-O5-C5	2.03	114.91	112.19
4	E	604	NAG	C2-N2-C7	-2.02	120.19	122.90
4	C	604	NAG	C2-N2-C7	-2.02	120.20	122.90
4	C	603	NAG	C1-O5-C5	-2.02	109.48	112.19
4	G	604	NAG	C2-N2-C7	-2.02	120.20	122.90
4	E	603	NAG	C1-O5-C5	-2.01	109.49	112.19

There are no chirality outliers.

All (42) torsion outliers are listed below:

Mol	Chain	Res	Type	Atoms
4	C	604	NAG	C3-C2-N2-C7
4	C	604	NAG	C8-C7-N2-C2

Continued on next page...

Continued from previous page...

Mol	Chain	Res	Type	Atoms
4	C	604	NAG	O7-C7-N2-C2
4	E	604	NAG	C3-C2-N2-C7
4	E	604	NAG	C8-C7-N2-C2
4	E	604	NAG	O7-C7-N2-C2
4	G	604	NAG	C3-C2-N2-C7
4	G	604	NAG	C8-C7-N2-C2
4	G	604	NAG	O7-C7-N2-C2
4	A	701	NAG	O5-C5-C6-O6
4	B	701	NAG	O5-C5-C6-O6
4	D	701	NAG	O5-C5-C6-O6
4	C	601	NAG	C4-C5-C6-O6
4	E	601	NAG	C4-C5-C6-O6
4	G	601	NAG	C4-C5-C6-O6
4	C	601	NAG	O5-C5-C6-O6
4	E	601	NAG	O5-C5-C6-O6
4	G	601	NAG	O5-C5-C6-O6
4	A	701	NAG	C4-C5-C6-O6
4	B	701	NAG	C4-C5-C6-O6
4	D	701	NAG	C4-C5-C6-O6
4	C	602	NAG	C8-C7-N2-C2
4	C	602	NAG	O7-C7-N2-C2
4	E	602	NAG	C8-C7-N2-C2
4	E	602	NAG	O7-C7-N2-C2
4	G	602	NAG	C8-C7-N2-C2
4	G	602	NAG	O7-C7-N2-C2
4	C	604	NAG	O5-C5-C6-O6
4	E	604	NAG	O5-C5-C6-O6
4	G	604	NAG	O5-C5-C6-O6
4	C	602	NAG	O5-C5-C6-O6
4	E	602	NAG	O5-C5-C6-O6
4	G	602	NAG	O5-C5-C6-O6
4	C	603	NAG	O5-C5-C6-O6
4	E	603	NAG	O5-C5-C6-O6
4	G	603	NAG	O5-C5-C6-O6
4	C	603	NAG	C3-C2-N2-C7
4	E	603	NAG	C3-C2-N2-C7
4	G	603	NAG	C3-C2-N2-C7
4	G	604	NAG	C4-C5-C6-O6
4	C	604	NAG	C4-C5-C6-O6
4	E	604	NAG	C4-C5-C6-O6

There are no ring outliers.

6 monomers are involved in 6 short contacts:

Mol	Chain	Res	Type	Clashes	Symm-Clashes
4	G	603	NAG	1	0
4	C	603	NAG	1	0
4	E	603	NAG	1	0
4	E	604	NAG	1	0
4	G	604	NAG	1	0
4	C	604	NAG	1	0

5.7 Other polymers [i](#)

There are no such residues in this entry.

5.8 Polymer linkage issues [i](#)

There are no chain breaks in this entry.

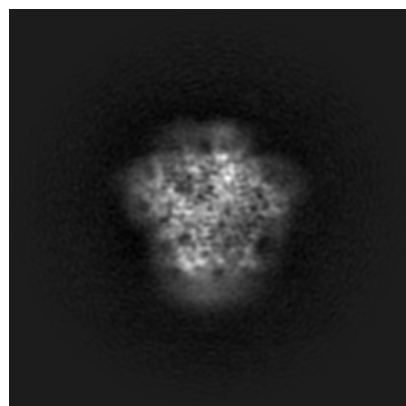
6 Map visualisation [i](#)

This section contains visualisations of the EMDB entry EMD-28910. These allow visual inspection of the internal detail of the map and identification of artifacts.

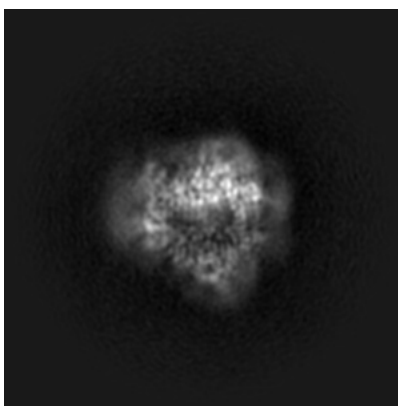
Images derived from a raw map, generated by summing the deposited half-maps, are presented below the corresponding image components of the primary map to allow further visual inspection and comparison with those of the primary map.

6.1 Orthogonal projections [i](#)

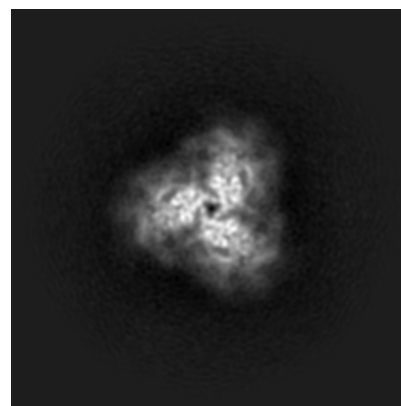
6.1.1 Primary map



X

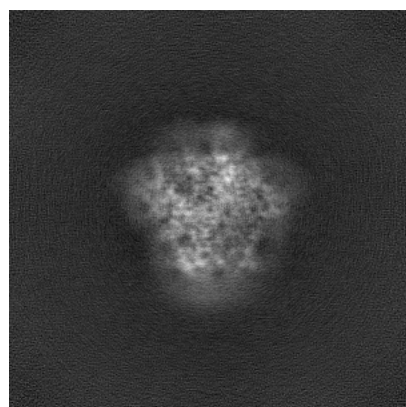


Y

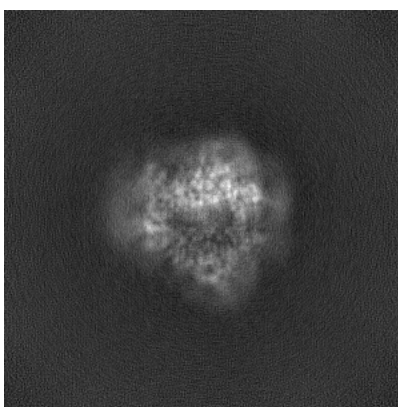


Z

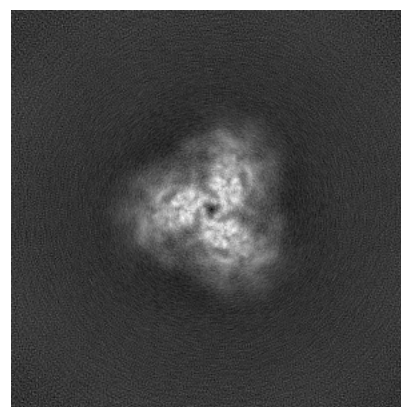
6.1.2 Raw map



X



Y

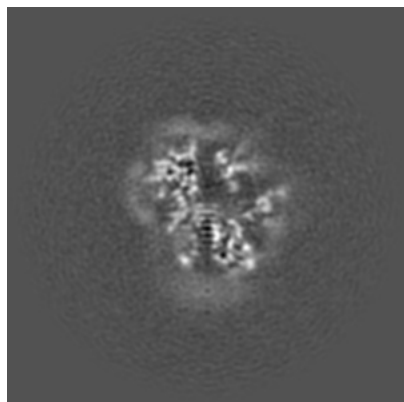


Z

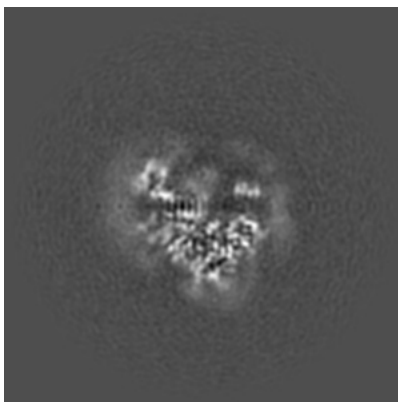
The images above show the map projected in three orthogonal directions.

6.2 Central slices [i](#)

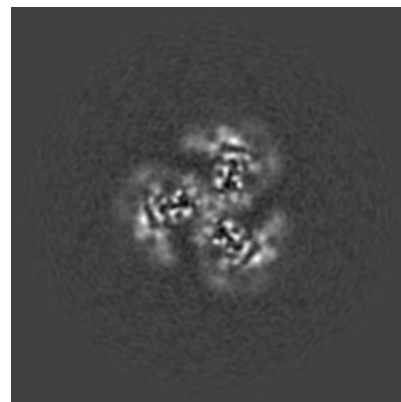
6.2.1 Primary map



X Index: 180

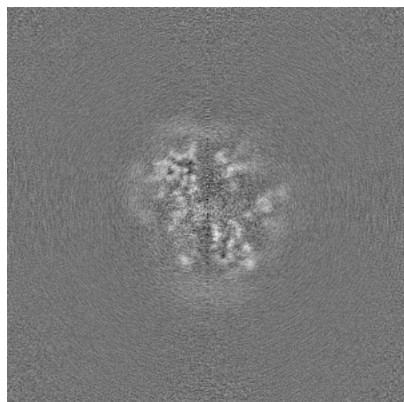


Y Index: 180

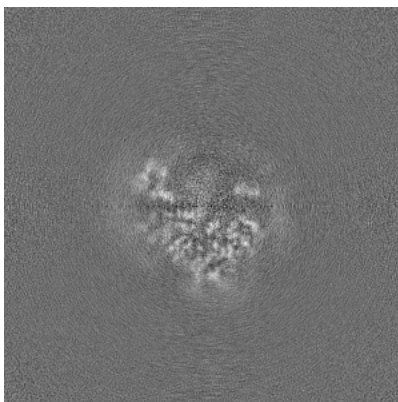


Z Index: 180

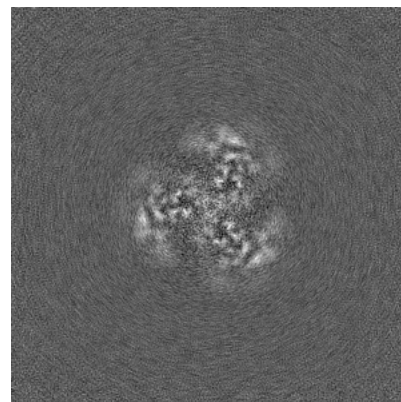
6.2.2 Raw map



X Index: 180



Y Index: 180

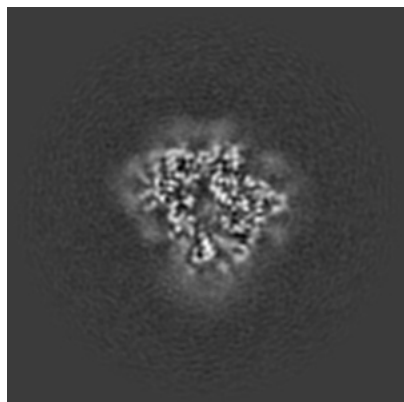


Z Index: 180

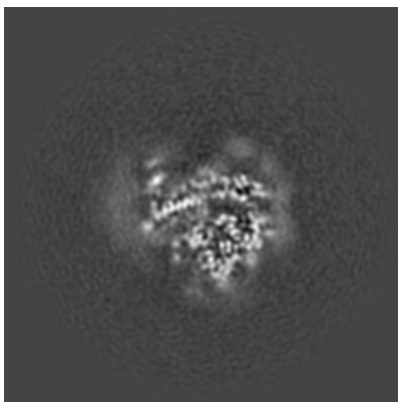
The images above show central slices of the map in three orthogonal directions.

6.3 Largest variance slices [i](#)

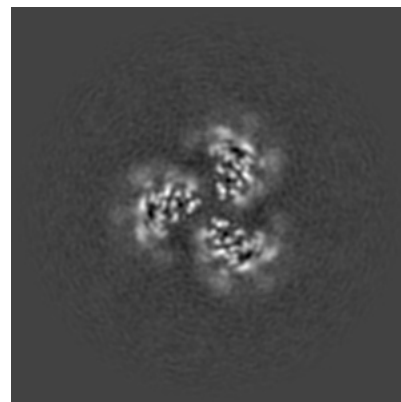
6.3.1 Primary map



X Index: 191

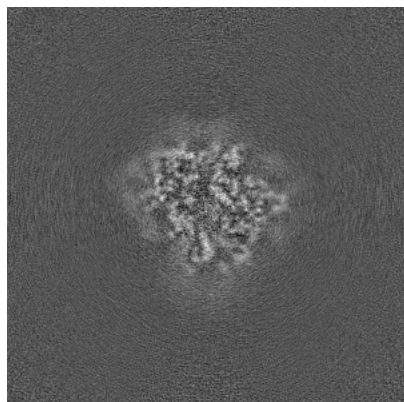


Y Index: 187

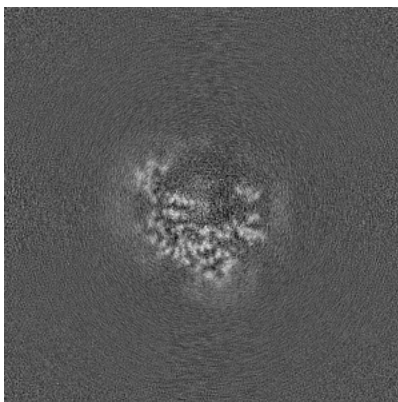


Z Index: 188

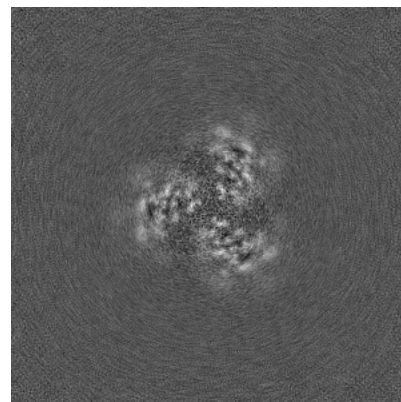
6.3.2 Raw map



X Index: 190



Y Index: 175

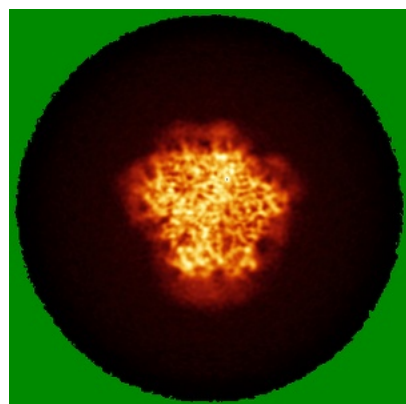


Z Index: 188

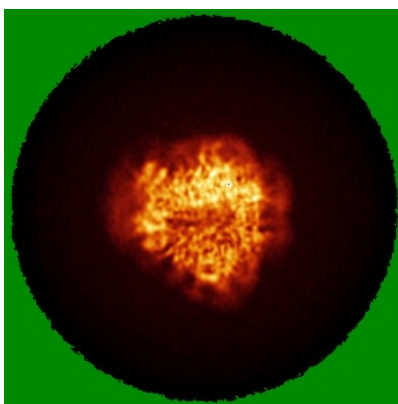
The images above show the largest variance slices of the map in three orthogonal directions.

6.4 Orthogonal standard-deviation projections (False-color) [i](#)

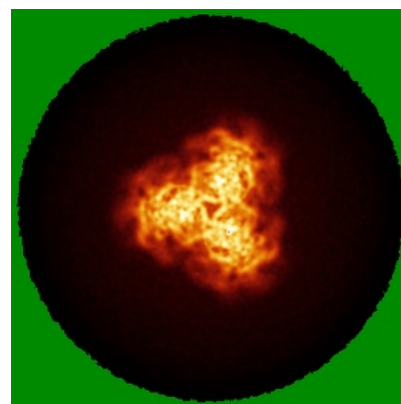
6.4.1 Primary map



X

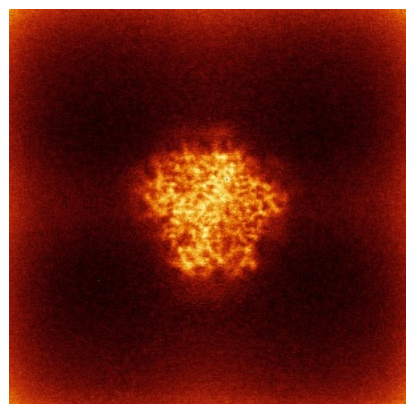


Y

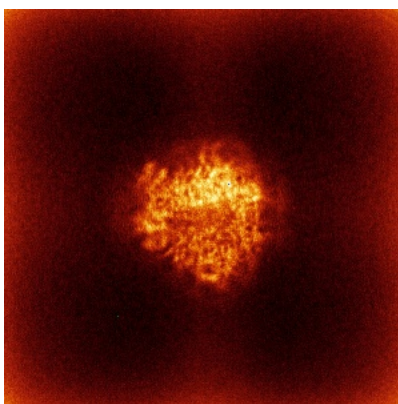


Z

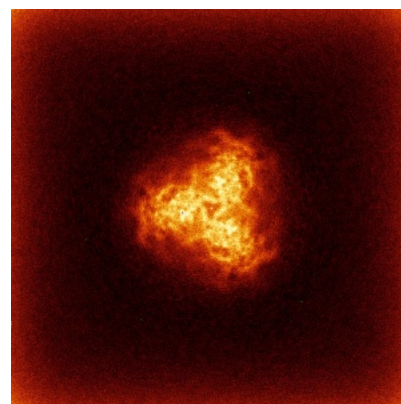
6.4.2 Raw map



X



Y

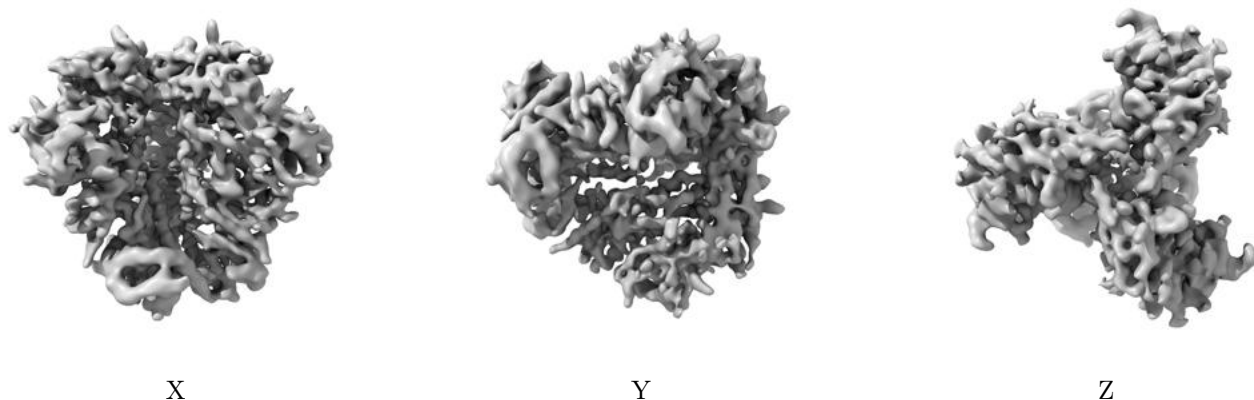


Z

The images above show the map standard deviation projections with false color in three orthogonal directions. Minimum values are shown in green, max in blue, and dark to light orange shades represent small to large values respectively.

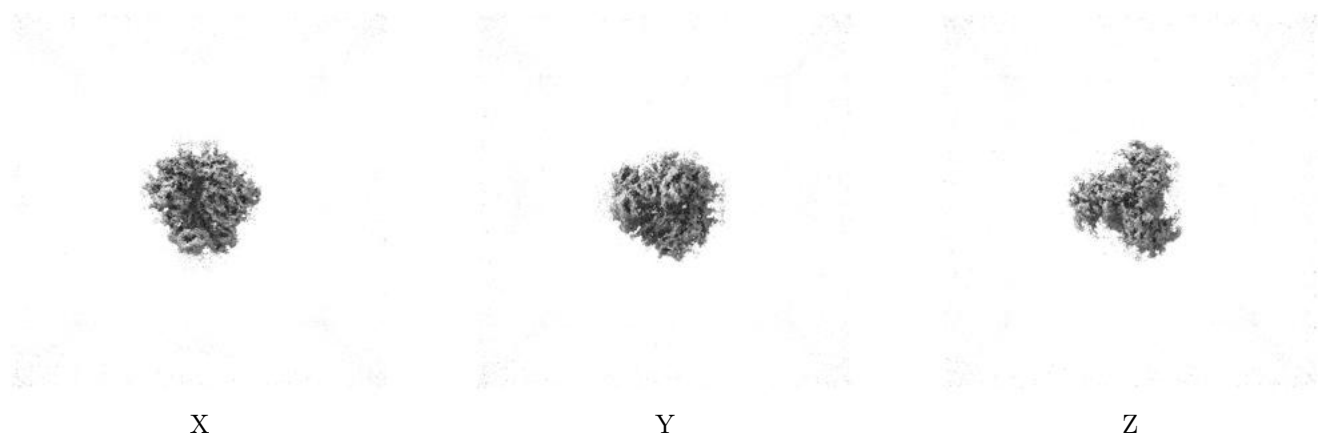
6.5 Orthogonal surface views [i](#)

6.5.1 Primary map



The images above show the 3D surface view of the map at the recommended contour level 0.102. These images, in conjunction with the slice images, may facilitate assessment of whether an appropriate contour level has been provided.

6.5.2 Raw map



These images show the 3D surface of the raw map. The raw map's contour level was selected so that its surface encloses the same volume as the primary map does at its recommended contour level.

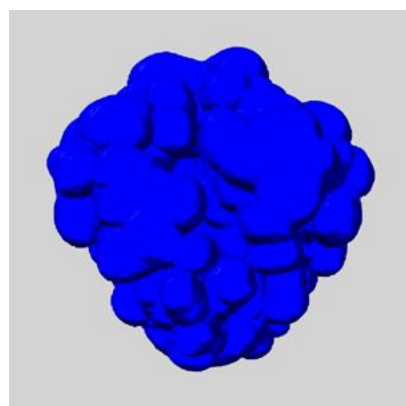
6.6 Mask visualisation [i](#)

This section shows the 3D surface view of the primary map at 50% transparency overlaid with the specified mask at 0% transparency

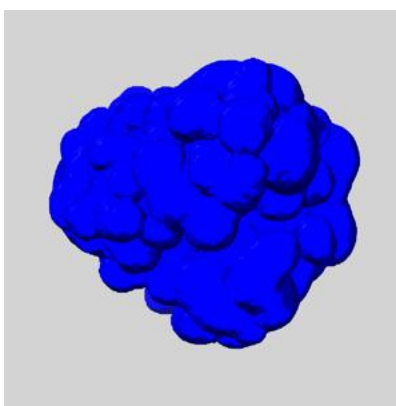
A mask typically either:

- Encompasses the whole structure
- Separates out a domain, a functional unit, a monomer or an area of interest from a larger structure

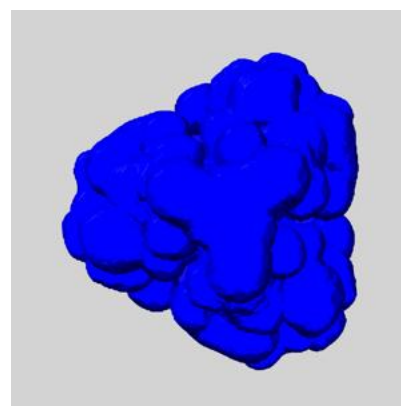
6.6.1 emd_28910_msk_1.map [i](#)



X



Y

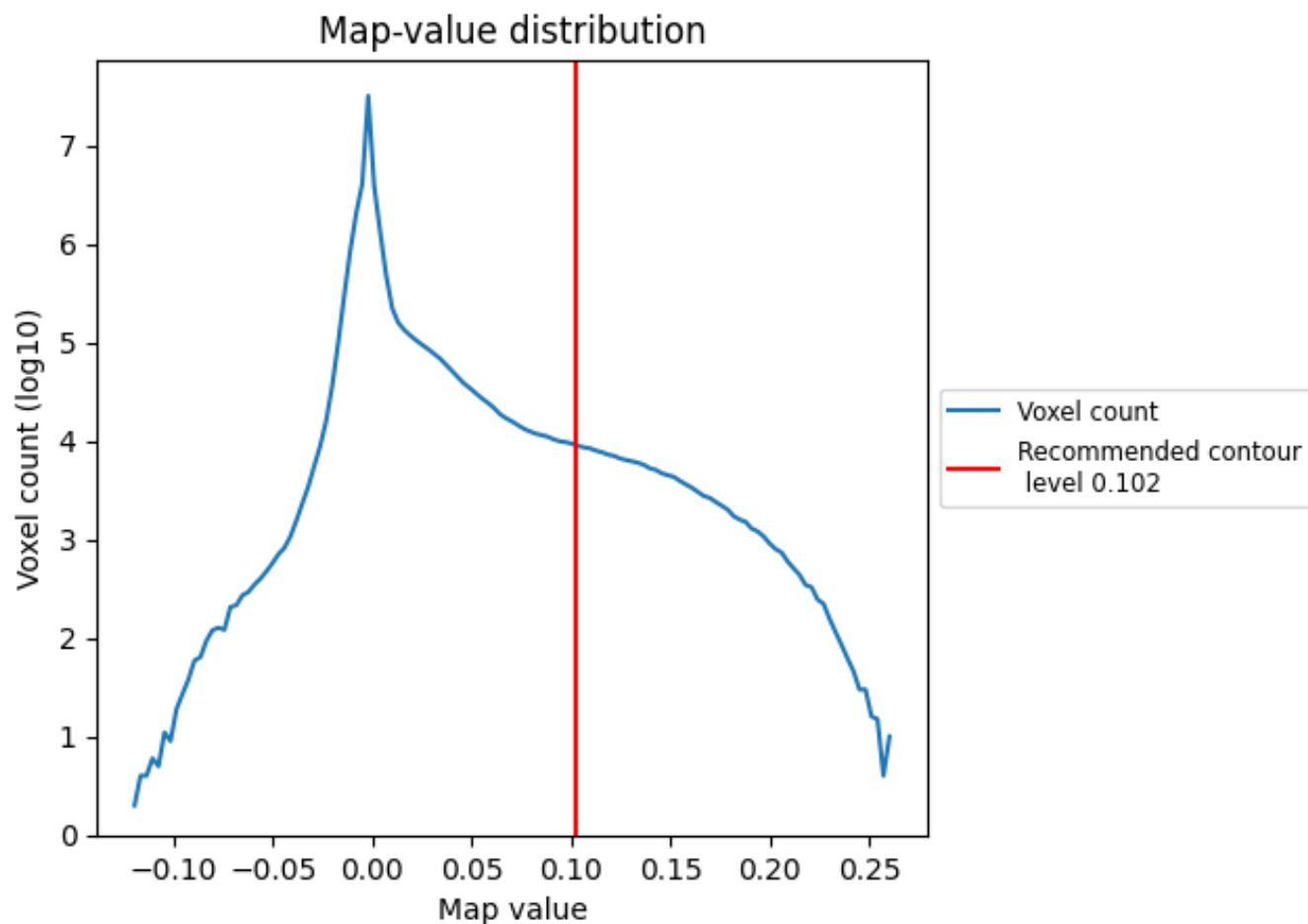


Z

7 Map analysis [i](#)

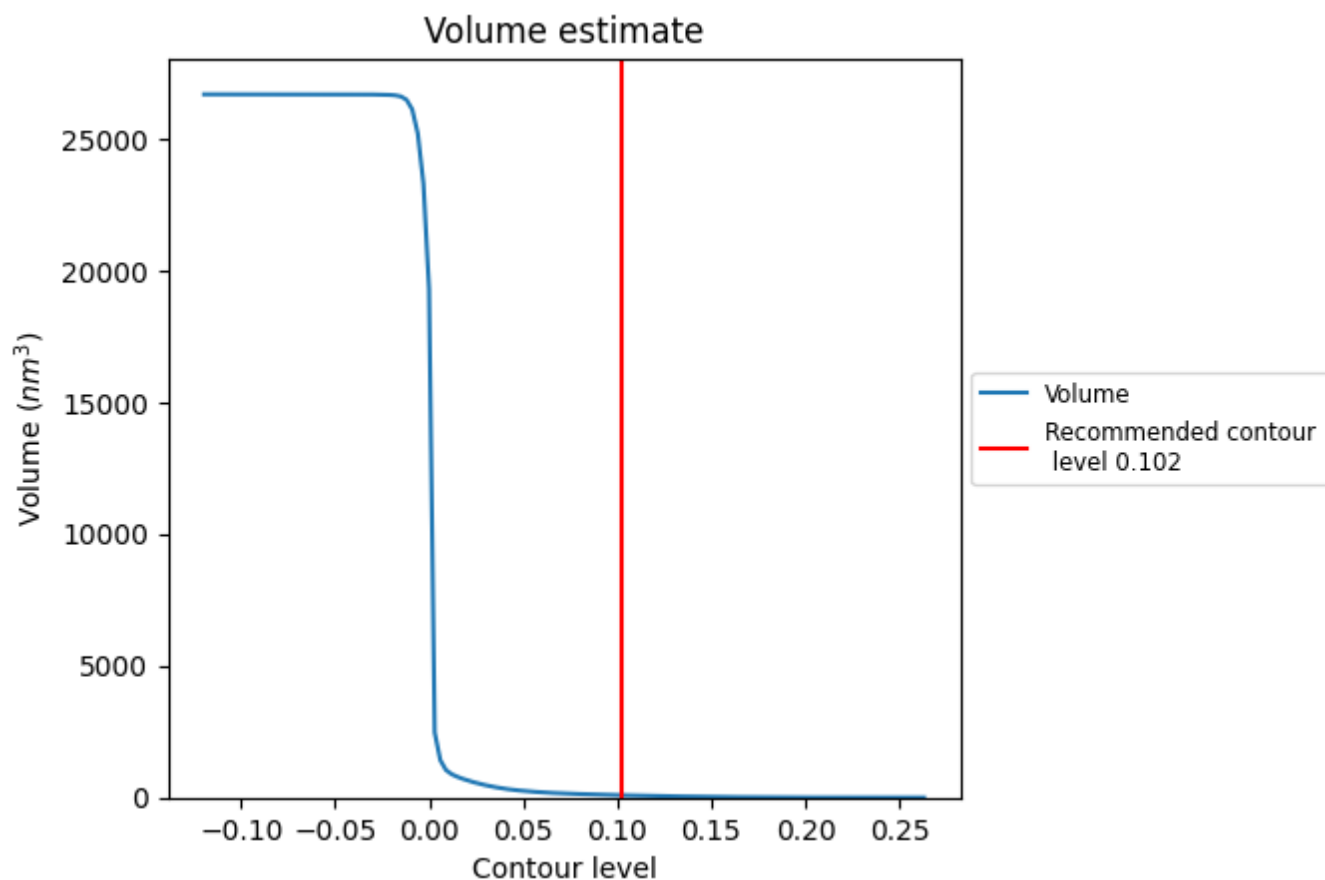
This section contains the results of statistical analysis of the map.

7.1 Map-value distribution [i](#)



The map-value distribution is plotted in 128 intervals along the x-axis. The y-axis is logarithmic. A spike in this graph at zero usually indicates that the volume has been masked.

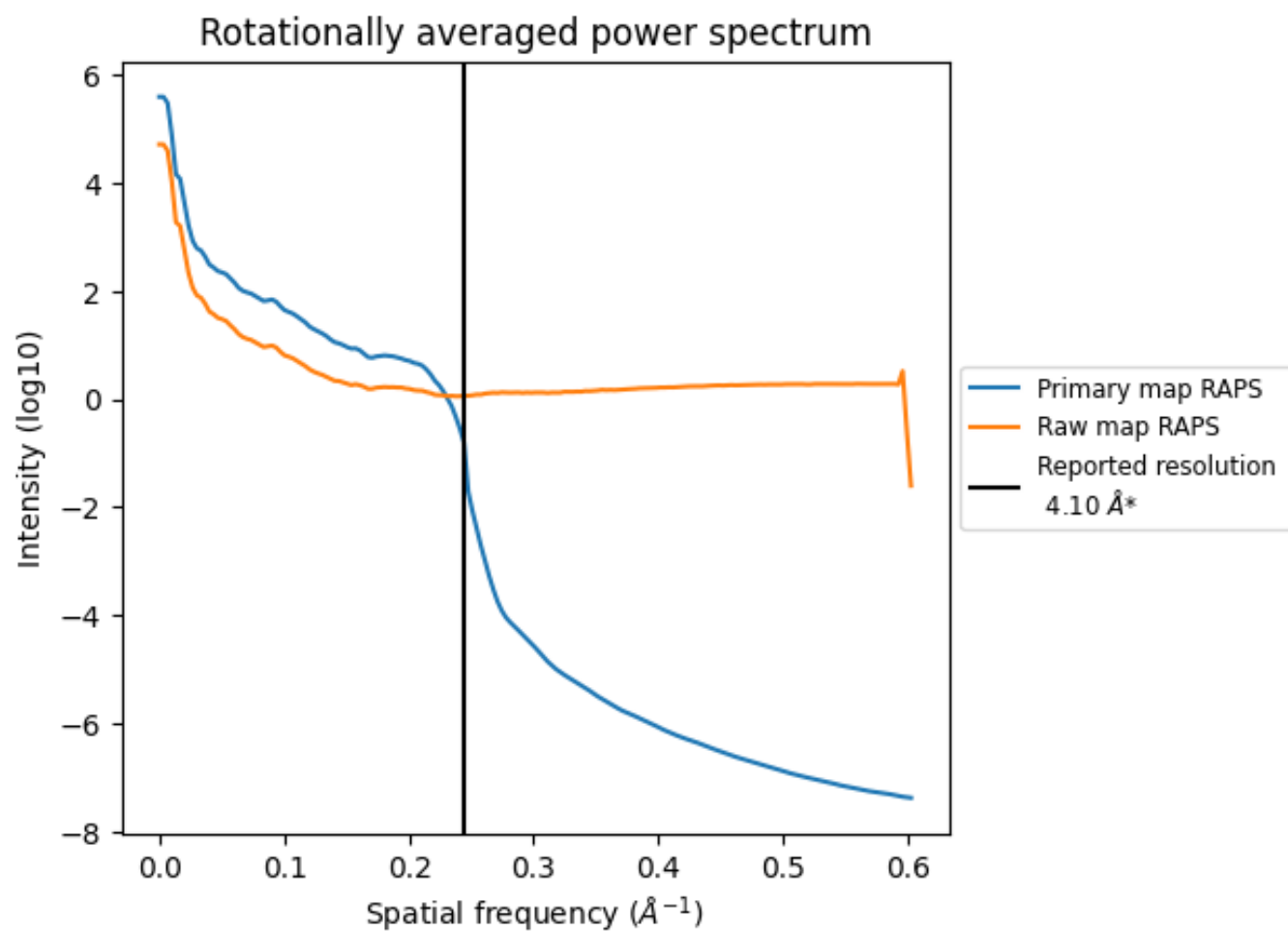
7.2 Volume estimate [i](#)



The volume at the recommended contour level is 89 nm^3 ; this corresponds to an approximate mass of 80 kDa.

The volume estimate graph shows how the enclosed volume varies with the contour level. The recommended contour level is shown as a vertical line and the intersection between the line and the curve gives the volume of the enclosed surface at the given level.

7.3 Rotationally averaged power spectrum ⓘ

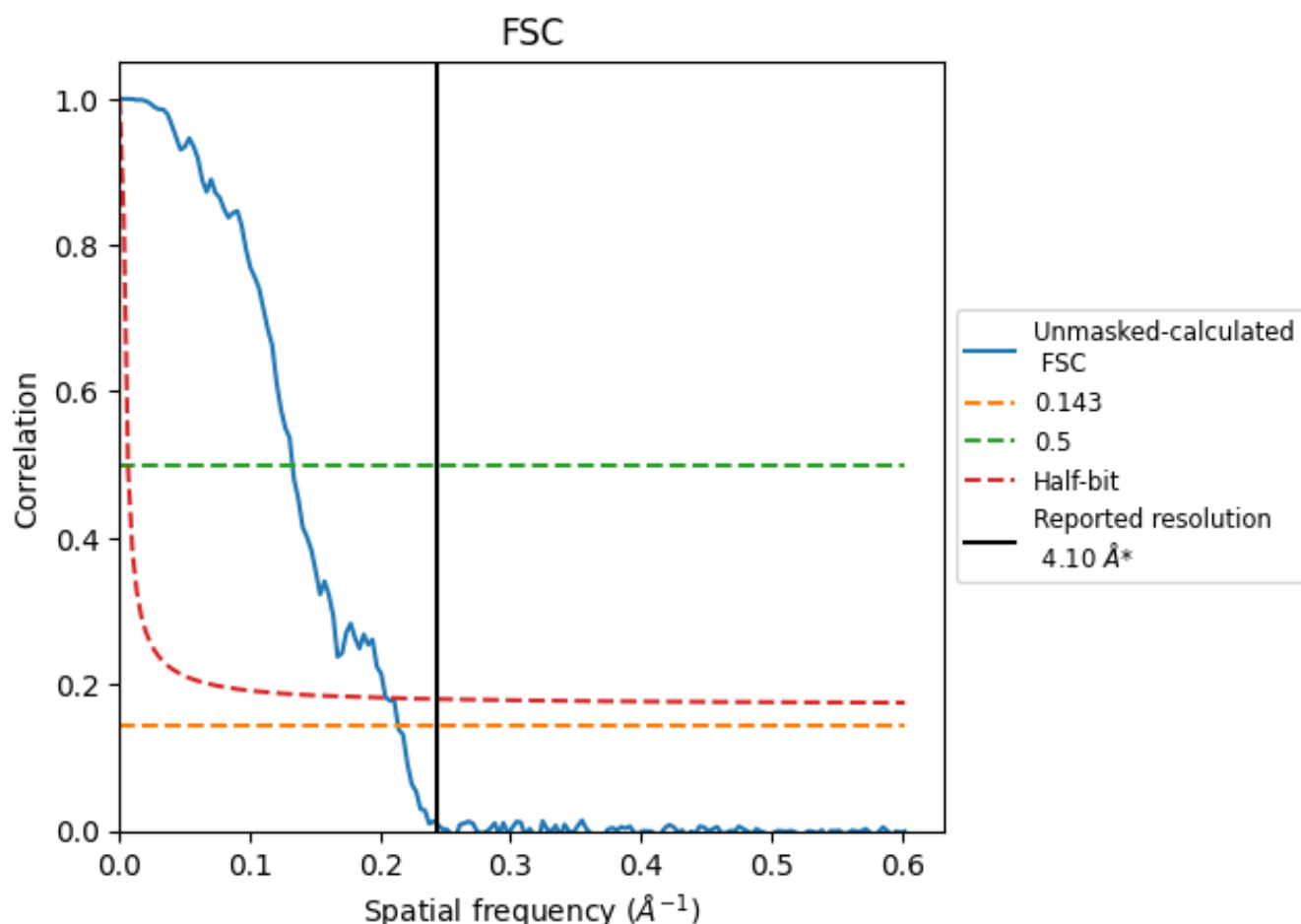


*Reported resolution corresponds to spatial frequency of 0.244 \AA^{-1}

8 Fourier-Shell correlation [i](#)

Fourier-Shell Correlation (FSC) is the most commonly used method to estimate the resolution of single-particle and subtomogram-averaged maps. The shape of the curve depends on the imposed symmetry, mask and whether or not the two 3D reconstructions used were processed from a common reference. The reported resolution is shown as a black line. A curve is displayed for the half-bit criterion in addition to lines showing the 0.143 gold standard cut-off and 0.5 cut-off.

8.1 FSC [i](#)



*Reported resolution corresponds to spatial frequency of 0.244 \AA^{-1}

8.2 Resolution estimates [i](#)

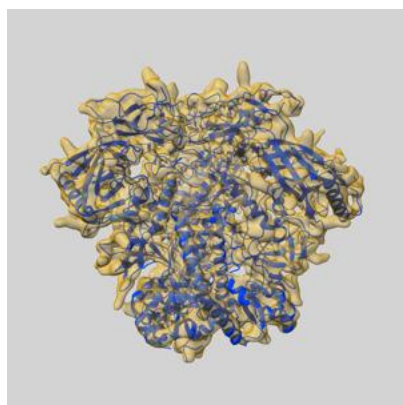
Resolution estimate (Å)	Estimation criterion (FSC cut-off)		
	0.143	0.5	Half-bit
Reported by author	4.10	-	-
Author-provided FSC curve	-	-	-
Unmasked-calculated*	4.68	7.54	4.88

*Resolution estimate based on FSC curve calculated by comparison of deposited half-maps. The value from deposited half-maps intersecting FSC 0.143 CUT-OFF 4.68 differs from the reported value 4.1 by more than 10 %

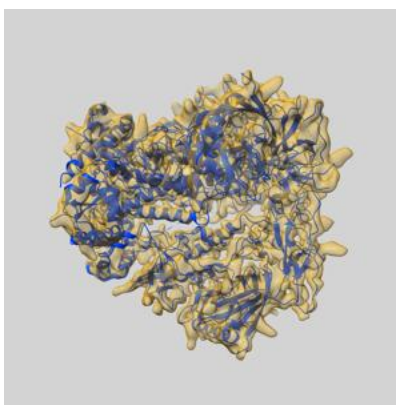
9 Map-model fit [i](#)

This section contains information regarding the fit between EMDB map EMD-28910 and PDB model 8F7T. Per-residue inclusion information can be found in section [3](#) on page [7](#).

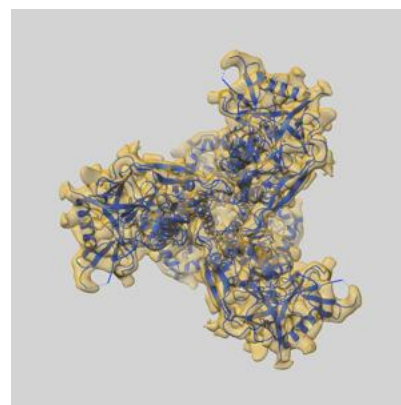
9.1 Map-model overlay [i](#)



X



Y



Z

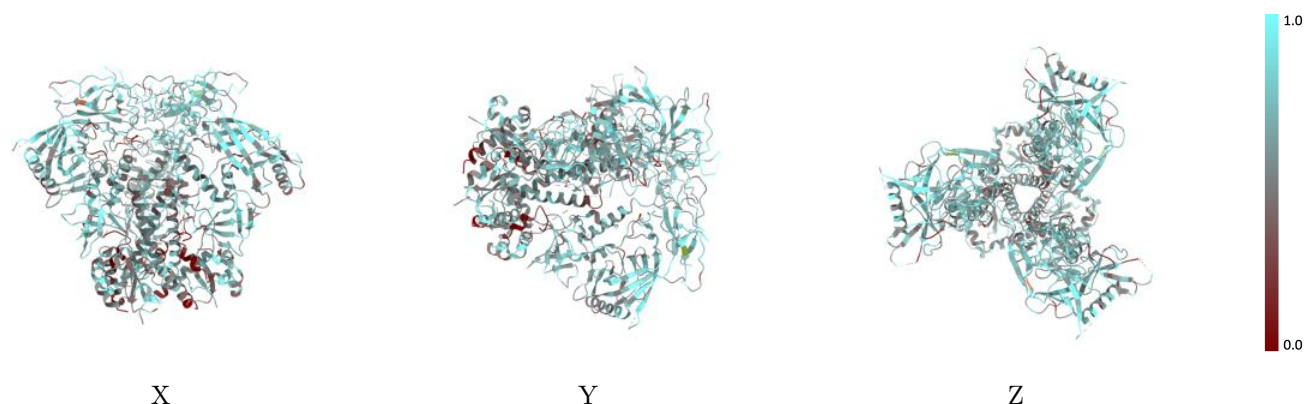
The images above show the 3D surface view of the map at the recommended contour level 0.102 at 50% transparency in yellow overlaid with a ribbon representation of the model coloured in blue. These images allow for the visual assessment of the quality of fit between the atomic model and the map.

9.2 Q-score mapped to coordinate model [i](#)



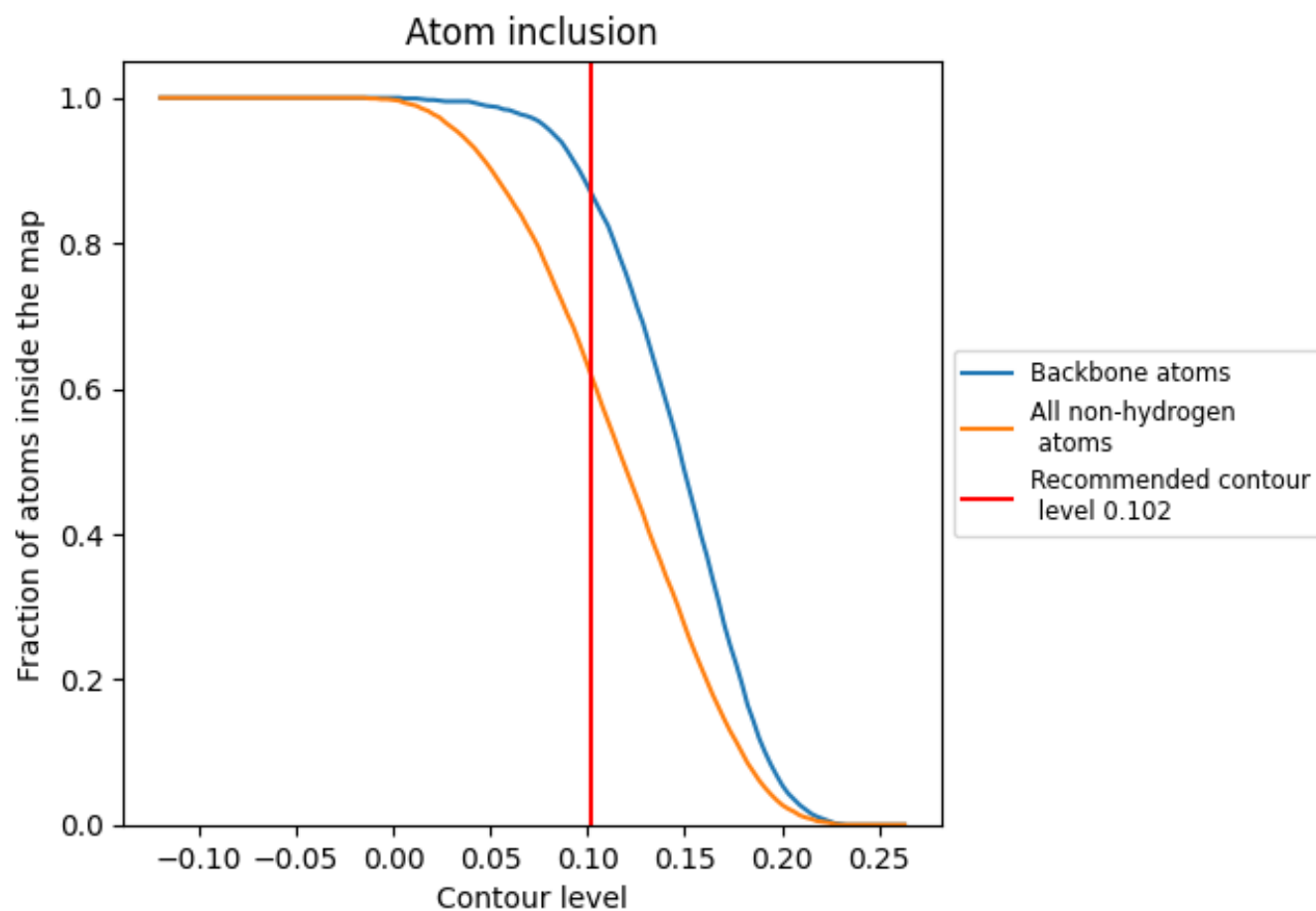
The images above show the model with each residue coloured according to its Q-score. This shows their resolvability in the map with higher Q-score values reflecting better resolvability. Please note: Q-score is calculating the resolvability of atoms, and thus high values are only expected at resolutions at which atoms can be resolved. Low Q-score values may therefore be expected for many entries.

9.3 Atom inclusion mapped to coordinate model [i](#)



The images above show the model with each residue coloured according to its atom inclusion. This shows to what extent they are inside the map at the recommended contour level (0.102).

9.4 Atom inclusion [i](#)



At the recommended contour level, 87% of all backbone atoms, 62% of all non-hydrogen atoms, are inside the map.

9.5 Map-model fit summary ⓘ

The table lists the average atom inclusion at the recommended contour level (0.102) and Q-score for the entire model and for each chain.

Chain	Atom inclusion	Q-score
All	<div></div> 0.6170	<div></div> 0.3510
A	<div></div> 0.5140	<div></div> 0.2620
B	<div></div> 0.5140	<div></div> 0.2590
C	<div></div> 0.6480	<div></div> 0.3770
D	<div></div> 0.5050	<div></div> 0.2600
E	<div></div> 0.6500	<div></div> 0.3760
G	<div></div> 0.6500	<div></div> 0.3750
I	<div></div> 0.3570	<div></div> 0.4430
K	<div></div> 0.3570	<div></div> 0.4410
L	<div></div> 0.3570	<div></div> 0.4400

1.0

0.0

<0.0