



Full wwPDB X-ray Structure Validation Report ⓘ

Jun 23, 2024 – 12:05 AM EDT

PDB ID : 6F7I
Title : human MALT1(329-728) IN COMPLEX WITH MLT-747
Authors : Renatus, M.; Renatus, M.
Deposited on : 2017-12-09
Resolution : 2.43 Å(reported)

This is a Full wwPDB X-ray Structure Validation Report for a publicly released PDB entry.

We welcome your comments at validation@mail.wwpdb.org

A user guide is available at

<https://www.wwpdb.org/validation/2017/XrayValidationReportHelp>

with specific help available everywhere you see the ⓘ symbol.

The types of validation reports are described at

<http://www.wwpdb.org/validation/2017/FAQs#types>.

The following versions of software and data (see [references ⓘ](#)) were used in the production of this report:

MolProbity	:	4.02b-467
Mogul	:	2022.3.0, CSD as543be (2022)
Xtriage (Phenix)	:	1.20.1
EDS	:	2.37.1
buster-report	:	1.1.7 (2018)
Percentile statistics	:	20191225.v01 (using entries in the PDB archive December 25th 2019)
Refmac	:	5.8.0158
CCP4	:	7.0.044 (Gargrove)
Ideal geometry (proteins)	:	Engh & Huber (2001)
Ideal geometry (DNA, RNA)	:	Parkinson et al. (1996)
Validation Pipeline (wwPDB-VP)	:	2.37.1

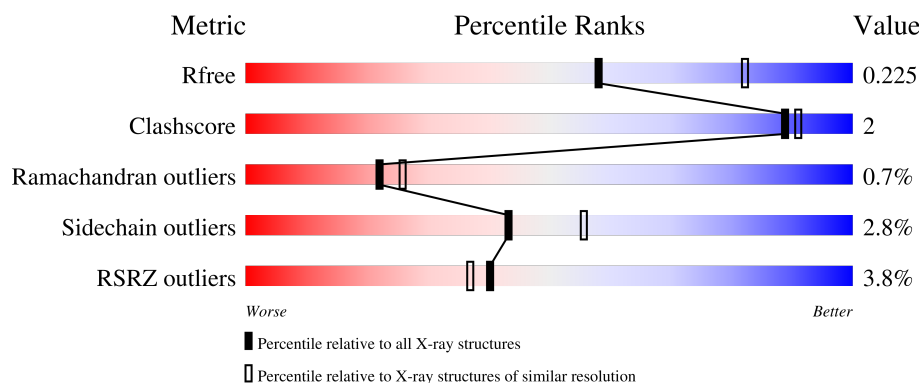
1 Overall quality at a glance

The following experimental techniques were used to determine the structure:

X-RAY DIFFRACTION

The reported resolution of this entry is 2.43 Å.

Percentile scores (ranging between 0-100) for global validation metrics of the entry are shown in the following graphic. The table shows the number of entries on which the scores are based.



Metric	Whole archive (#Entries)	Similar resolution (#Entries, resolution range(Å))
R_{free}	130704	1564 (2.46-2.42)
Clashscore	141614	1631 (2.46-2.42)
Ramachandran outliers	138981	1617 (2.46-2.42)
Sidechain outliers	138945	1617 (2.46-2.42)
RSRZ outliers	127900	1547 (2.46-2.42)

The table below summarises the geometric issues observed across the polymeric chains and their fit to the electron density. The red, orange, yellow and green segments of the lower bar indicate the fraction of residues that contain outliers for ≥ 3 , 2, 1 and 0 types of geometric quality criteria respectively. A grey segment represents the fraction of residues that are not modelled. The numeric value for each fraction is indicated below the corresponding segment, with a dot representing fractions $\leq 5\%$. The upper red bar (where present) indicates the fraction of residues that have poor fit to the electron density. The numeric value is given above the bar.

Mol	Chain	Length	Quality of chain
1	A	404	
1	B	404	

2 Entry composition

There are 5 unique types of molecules in this entry. The entry contains 5872 atoms, of which 0 are hydrogens and 0 are deuteriums.

In the tables below, the ZeroOcc column contains the number of atoms modelled with zero occupancy, the AltConf column contains the number of residues with at least one atom in alternate conformation and the Trace column contains the number of residues modelled with at most 2 atoms.

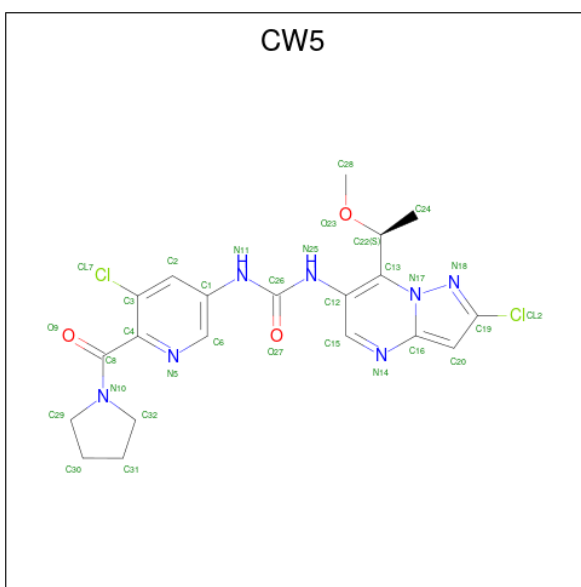
- Molecule 1 is a protein called Mucosa-associated lymphoid tissue lymphoma translocation protein 1.

Mol	Chain	Residues	Atoms					ZeroOcc	AltConf	Trace
1	A	355	Total	C	N	O	S	0	0	0
			2813	1803	455	535	20			
1	B	365	Total	C	N	O	S	0	0	0
			2892	1851	468	552	21			

There are 8 discrepancies between the modelled and reference sequences:

Chain	Residue	Modelled	Actual	Comment	Reference
A	325	GLY	-	expression tag	UNP Q9UDY8
A	326	PRO	-	expression tag	UNP Q9UDY8
A	327	GLY	-	expression tag	UNP Q9UDY8
A	328	SER	-	expression tag	UNP Q9UDY8
B	325	GLY	-	expression tag	UNP Q9UDY8
B	326	PRO	-	expression tag	UNP Q9UDY8
B	327	GLY	-	expression tag	UNP Q9UDY8
B	328	SER	-	expression tag	UNP Q9UDY8

- Molecule 2 is 1-[2-chloranyl-7-[(1 {S})-1-methoxyethyl]pyrazolo[1,5-a]pyrimidin-6-yl]-3-(5-chloranyl-6-pyrrolidin-1-ylcarbonyl-pyridin-3-yl)urea (three-letter code: CW5) (formula: C₂₀H₂₁Cl₂N₇O₃).

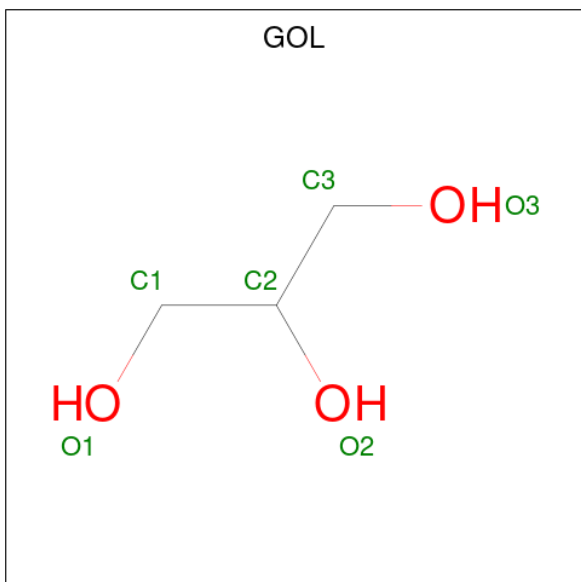


Mol	Chain	Residues	Atoms					ZeroOcc	AltConf
2	A	1	Total 32	C 20	Cl 2	N 7	O 3	0	0
2	B	1	Total 32	C 20	Cl 2	N 7	O 3	0	0

- Molecule 3 is MAGNESIUM ION (three-letter code: MG) (formula: Mg).

Mol	Chain	Residues	Atoms	ZeroOcc	AltConf
3	A	2	Total Mg 2 2	0	0

- Molecule 4 is GLYCEROL (three-letter code: GOL) (formula: $\text{C}_3\text{H}_8\text{O}_3$).



Mol	Chain	Residues	Atoms			ZeroOcc	AltConf
4	A	1	Total 6	C 3	O 3	0	0
4	B	1	Total 6	C 3	O 3	0	0

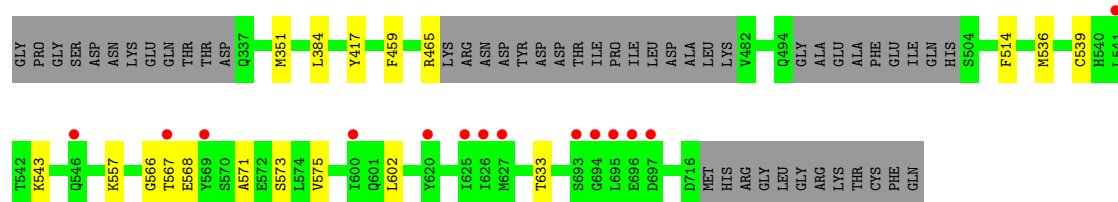
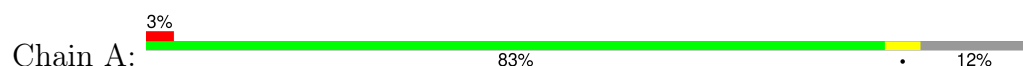
- Molecule 5 is water.

Mol	Chain	Residues	Atoms		ZeroOcc	AltConf
5	A	46	Total 46	O 46	0	0
5	B	43	Total 43	O 43	0	0

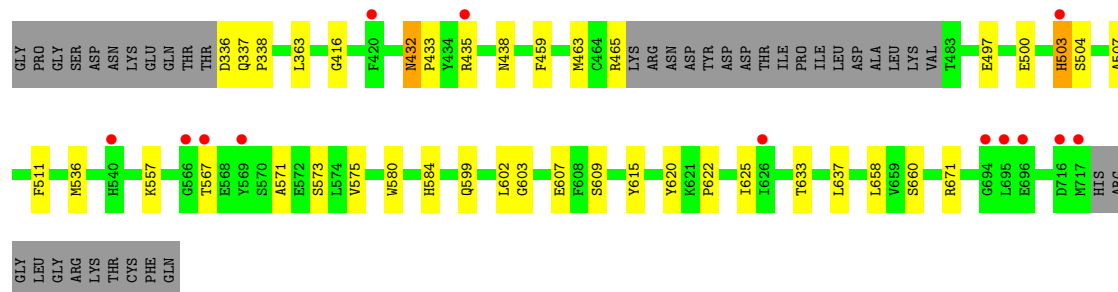
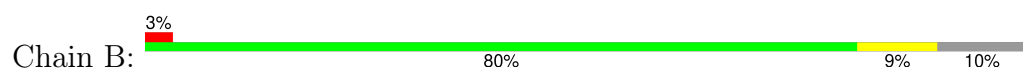
3 Residue-property plots [i](#)

These plots are drawn for all protein, RNA, DNA and oligosaccharide chains in the entry. The first graphic for a chain summarises the proportions of the various outlier classes displayed in the second graphic. The second graphic shows the sequence view annotated by issues in geometry and electron density. Residues are color-coded according to the number of geometric quality criteria for which they contain at least one outlier: green = 0, yellow = 1, orange = 2 and red = 3 or more. A red dot above a residue indicates a poor fit to the electron density ($RSRZ > 2$). Stretches of 2 or more consecutive residues without any outlier are shown as a green connector. Residues present in the sample, but not in the model, are shown in grey.

- Molecule 1: Mucosa-associated lymphoid tissue lymphoma translocation protein 1



- Molecule 1: Mucosa-associated lymphoid tissue lymphoma translocation protein 1



4 Data and refinement statistics

Property	Value	Source
Space group	P 1 21 1	Depositor
Cell constants a, b, c, α , β , γ	64.20Å 108.97Å 73.51Å 90.00° 111.79° 90.00°	Depositor
Resolution (Å)	68.26 – 2.43 68.26 – 2.43	Depositor EDS
% Data completeness (in resolution range)	99.6 (68.26-2.43) 99.6 (68.26-2.43)	Depositor EDS
R_{merge}	0.04	Depositor
R_{sym}	(Not available)	Depositor
$\langle I/\sigma(I) \rangle$ ¹	2.50 (at 2.42Å)	Xtriage
Refinement program	BUSTER 2.11.7	Depositor
R, R_{free}	0.190 , 0.218 0.194 , 0.225	Depositor DCC
R_{free} test set	1749 reflections (4.96%)	wwPDB-VP
Wilson B-factor (Å ²)	55.4	Xtriage
Anisotropy	0.338	Xtriage
Bulk solvent k_{sol} (e/Å ³), B_{sol} (Å ²)	0.34 , 50.5	EDS
L-test for twinning ²	$\langle L \rangle = 0.49$, $\langle L^2 \rangle = 0.32$	Xtriage
Estimated twinning fraction	No twinning to report.	Xtriage
F_o, F_c correlation	0.96	EDS
Total number of atoms	5872	wwPDB-VP
Average B, all atoms (Å ²)	65.0	wwPDB-VP

Xtriage's analysis on translational NCS is as follows: *The largest off-origin peak in the Patterson function is 4.54% of the height of the origin peak. No significant pseudotranslation is detected.*

¹Intensities estimated from amplitudes.

²Theoretical values of $\langle |L| \rangle$, $\langle L^2 \rangle$ for acentric reflections are 0.5, 0.333 respectively for untwinned datasets, and 0.375, 0.2 for perfectly twinned datasets.

5 Model quality

5.1 Standard geometry

Bond lengths and bond angles in the following residue types are not validated in this section: CW5, MG, GOL

The Z score for a bond length (or angle) is the number of standard deviations the observed value is removed from the expected value. A bond length (or angle) with $|Z| > 5$ is considered an outlier worth inspection. RMSZ is the root-mean-square of all Z scores of the bond lengths (or angles).

Mol	Chain	Bond lengths		Bond angles	
		RMSZ	$\# Z > 5$	RMSZ	$\# Z > 5$
1	A	0.49	0/2863	0.69	0/3870
1	B	0.49	0/2945	0.68	0/3981
All	All	0.49	0/5808	0.69	0/7851

There are no bond length outliers.

There are no bond angle outliers.

There are no chirality outliers.

There are no planarity outliers.

5.2 Too-close contacts

In the following table, the Non-H and H(model) columns list the number of non-hydrogen atoms and hydrogen atoms in the chain respectively. The H(added) column lists the number of hydrogen atoms added and optimized by MolProbity. The Clashes column lists the number of clashes within the asymmetric unit, whereas Symm-Clashes lists symmetry-related clashes.

Mol	Chain	Non-H	H(model)	H(added)	Clashes	Symm-Clashes
1	A	2813	0	2840	5	0
1	B	2892	0	2905	17	0
2	A	32	0	0	0	0
2	B	32	0	0	0	0
3	A	2	0	0	0	0
4	A	6	0	8	0	0
4	B	6	0	8	0	0
5	A	46	0	0	0	0
5	B	43	0	0	0	0
All	All	5872	0	5761	22	0

The all-atom clashscore is defined as the number of clashes found per 1000 atoms (including

hydrogen atoms). The all-atom clashscore for this structure is 2.

All (22) close contacts within the same asymmetric unit are listed below, sorted by their clash magnitude.

Atom-1	Atom-2	Interatomic distance (Å)	Clash overlap (Å)
1:B:497:GLU:HG2	1:B:500:GLU:HB2	1.75	0.67
1:B:580:TRP:O	1:B:584:HIS:HD2	1.83	0.62
1:A:514:PHE:HZ	1:A:539:CYS:HB2	1.67	0.59
1:B:435:ARG:HB2	1:B:438:ASN:ND2	2.18	0.58
1:B:571:ALA:O	1:B:575:VAL:HG23	2.06	0.55
1:A:571:ALA:O	1:A:575:VAL:HG23	2.07	0.55
1:A:514:PHE:CZ	1:A:539:CYS:HB2	2.42	0.54
1:B:584:HIS:HE1	1:B:609:SER:OG	1.90	0.53
1:B:607:GLU:CD	1:B:671:ARG:HH12	2.14	0.49
1:A:351:MET:HE1	1:A:384:LEU:HD22	1.94	0.49
1:B:363:LEU:HG	1:B:658:LEU:HD11	1.93	0.49
1:B:416:GLY:HA3	1:B:463:MET:SD	2.53	0.48
1:B:622:PRO:HD2	1:B:625:ILE:HG13	1.96	0.48
1:A:417:TYR:HA	1:A:465:ARG:NH2	2.29	0.47
1:B:432:ASN:HD22	1:B:433:PRO:HA	1.79	0.47
1:B:511:PHE:HA	1:B:536:MET:CE	2.49	0.43
1:B:504:SER:HB2	1:B:507:ALA:HB2	2.00	0.43
1:B:584:HIS:CE1	1:B:609:SER:OG	2.72	0.42
1:B:603:GLY:HA3	1:B:615:TYR:CE1	2.54	0.42
1:B:435:ARG:HB2	1:B:438:ASN:HD22	1.83	0.42
1:B:337:GLN:HA	1:B:338:PRO:HD3	1.98	0.42
1:B:599:GLN:HB2	1:B:620:TYR:HB3	2.04	0.40

There are no symmetry-related clashes.

5.3 Torsion angles [i](#)

5.3.1 Protein backbone [i](#)

In the following table, the Percentiles column shows the percent Ramachandran outliers of the chain as a percentile score with respect to all X-ray entries followed by that with respect to entries of similar resolution.

The Analysed column shows the number of residues for which the backbone conformation was analysed, and the total number of residues.

Mol	Chain	Analysed	Favoured	Allowed	Outliers	Percentiles	
1	A	349/404 (86%)	337 (97%)	10 (3%)	2 (1%)	25	29

Continued on next page...

Continued from previous page...

Mol	Chain	Analysed	Favoured	Allowed	Outliers	Percentiles	
1	B	361/404 (89%)	345 (96%)	13 (4%)	3 (1%)	19	22
All	All	710/808 (88%)	682 (96%)	23 (3%)	5 (1%)	22	26

All (5) Ramachandran outliers are listed below:

Mol	Chain	Res	Type
1	A	566	GLY
1	A	567	THR
1	B	503	HIS
1	B	567	THR
1	B	660	SER

5.3.2 Protein sidechains ⓘ

In the following table, the Percentiles column shows the percent sidechain outliers of the chain as a percentile score with respect to all X-ray entries followed by that with respect to entries of similar resolution.

The Analysed column shows the number of residues for which the sidechain conformation was analysed, and the total number of residues.

Mol	Chain	Analysed	Rotameric	Outliers	Percentiles	
1	A	316/357 (88%)	308 (98%)	8 (2%)	47	60
1	B	323/357 (90%)	313 (97%)	10 (3%)	40	52
All	All	639/714 (90%)	621 (97%)	18 (3%)	43	56

All (18) residues with a non-rotameric sidechain are listed below:

Mol	Chain	Res	Type
1	A	459	PHE
1	A	536	MET
1	A	543	LYS
1	A	557	LYS
1	A	568	GLU
1	A	573	SER
1	A	602	LEU
1	A	633	THR
1	B	336	ASP
1	B	432	ASN
1	B	459	PHE

Continued on next page...

Continued from previous page...

Mol	Chain	Res	Type
1	B	465	ARG
1	B	503	HIS
1	B	557	LYS
1	B	573	SER
1	B	602	LEU
1	B	633	THR
1	B	637	LEU

Sometimes sidechains can be flipped to improve hydrogen bonding and reduce clashes. All (9) such sidechains are listed below:

Mol	Chain	Res	Type
1	A	577	ASN
1	B	337	GLN
1	B	432	ASN
1	B	438	ASN
1	B	485	ASN
1	B	508	ASN
1	B	546	GLN
1	B	577	ASN
1	B	584	HIS

5.3.3 RNA [i](#)

There are no RNA molecules in this entry.

5.4 Non-standard residues in protein, DNA, RNA chains [i](#)

There are no non-standard protein/DNA/RNA residues in this entry.

5.5 Carbohydrates [i](#)

There are no monosaccharides in this entry.

5.6 Ligand geometry [i](#)

Of 6 ligands modelled in this entry, 2 are monoatomic - leaving 4 for Mogul analysis.

In the following table, the Counts columns list the number of bonds (or angles) for which Mogul statistics could be retrieved, the number of bonds (or angles) that are observed in the model and

the number of bonds (or angles) that are defined in the Chemical Component Dictionary. The Link column lists molecule types, if any, to which the group is linked. The Z score for a bond length (or angle) is the number of standard deviations the observed value is removed from the expected value. A bond length (or angle) with $|Z| > 2$ is considered an outlier worth inspection. RMSZ is the root-mean-square of all Z scores of the bond lengths (or angles).

Mol	Type	Chain	Res	Link	Bond lengths			Bond angles		
					Counts	RMSZ	# Z > 2	Counts	RMSZ	# Z > 2
4	GOL	A	804	-	5,5,5	0.10	0	5,5,5	0.35	0
4	GOL	B	802	-	5,5,5	0.06	0	5,5,5	0.15	0
2	CW5	A	801	-	27,35,35	2.72	7 (25%)	28,50,50	2.00	8 (28%)
2	CW5	B	801	-	27,35,35	2.55	7 (25%)	28,50,50	2.08	7 (25%)

In the following table, the Chirals column lists the number of chiral outliers, the number of chiral centers analysed, the number of these observed in the model and the number defined in the Chemical Component Dictionary. Similar counts are reported in the Torsion and Rings columns. '-' means no outliers of that kind were identified.

Mol	Type	Chain	Res	Link	Chirals	Torsions	Rings
4	GOL	A	804	-	-	0/4/4/4	-
4	GOL	B	802	-	-	2/4/4/4	-
2	CW5	A	801	-	-	0/21/29/29	0/4/4/4
2	CW5	B	801	-	-	3/21/29/29	0/4/4/4

All (14) bond length outliers are listed below:

Mol	Chain	Res	Type	Atoms	Z	Observed(Å)	Ideal(Å)
2	A	801	CW5	C16-N14	7.43	1.43	1.34
2	B	801	CW5	C16-N14	7.24	1.43	1.34
2	A	801	CW5	C15-C12	7.04	1.50	1.39
2	B	801	CW5	C15-C12	6.61	1.49	1.39
2	A	801	CW5	C20-C19	5.63	1.47	1.39
2	A	801	CW5	C19-N18	-5.24	1.26	1.34
2	B	801	CW5	C20-C19	4.97	1.46	1.39
2	B	801	CW5	C19-N18	-4.28	1.28	1.34
2	B	801	CW5	C12-N25	-3.43	1.35	1.41
2	A	801	CW5	C12-N25	-2.90	1.36	1.41
2	A	801	CW5	C15-N14	-2.90	1.26	1.31
2	B	801	CW5	C15-N14	-2.66	1.27	1.31
2	B	801	CW5	C24-C22	2.43	1.56	1.52
2	A	801	CW5	C24-C22	2.38	1.56	1.52

All (15) bond angle outliers are listed below:

Mol	Chain	Res	Type	Atoms	Z	Observed(°)	Ideal(°)
2	A	801	CW5	C1-C6-N5	-5.86	119.22	124.07
2	B	801	CW5	C1-C6-N5	-5.60	119.44	124.07
2	B	801	CW5	C12-C15-N14	-4.40	117.10	121.83
2	B	801	CW5	C32-N10-C29	3.62	116.17	111.37
2	B	801	CW5	C6-N5-C4	3.30	123.60	117.92
2	A	801	CW5	C32-N10-C29	2.96	115.29	111.37
2	B	801	CW5	C30-C29-N10	-2.95	98.47	103.44
2	B	801	CW5	C2-C3-C4	-2.95	118.90	121.88
2	A	801	CW5	C2-C3-C4	-2.93	118.91	121.88
2	A	801	CW5	C6-N5-C4	2.83	122.79	117.92
2	A	801	CW5	C30-C29-N10	-2.76	98.78	103.44
2	A	801	CW5	C12-C15-N14	-2.68	118.95	121.83
2	A	801	CW5	C2-C1-C6	2.65	120.00	118.13
2	B	801	CW5	C15-N14-C16	2.55	120.01	116.78
2	A	801	CW5	C15-N14-C16	2.18	119.54	116.78

There are no chirality outliers.

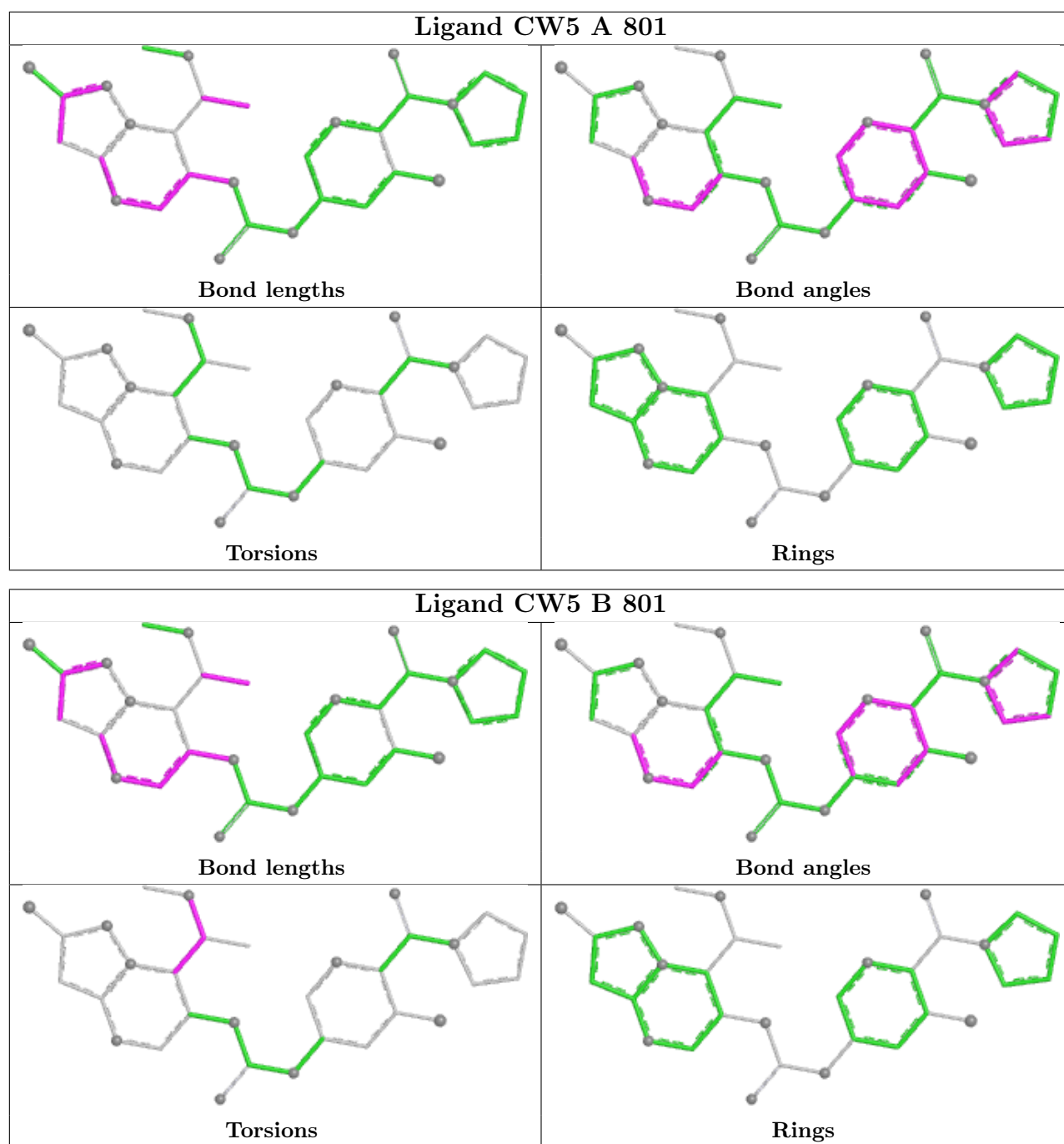
All (5) torsion outliers are listed below:

Mol	Chain	Res	Type	Atoms
2	B	801	CW5	N17-C13-C22-O23
4	B	802	GOL	O1-C1-C2-C3
4	B	802	GOL	O1-C1-C2-O2
2	B	801	CW5	C13-C22-O23-C28
2	B	801	CW5	C24-C22-O23-C28

There are no ring outliers.

No monomer is involved in short contacts.

The following is a two-dimensional graphical depiction of Mogul quality analysis of bond lengths, bond angles, torsion angles, and ring geometry for all instances of the Ligand of Interest. In addition, ligands with molecular weight > 250 and outliers as shown on the validation Tables will also be included. For torsion angles, if less than 5% of the Mogul distribution of torsion angles is within 10 degrees of the torsion angle in question, then that torsion angle is considered an outlier. Any bond that is central to one or more torsion angles identified as an outlier by Mogul will be highlighted in the graph. For rings, the root-mean-square deviation (RMSD) between the ring in question and similar rings identified by Mogul is calculated over all ring torsion angles. If the average RMSD is greater than 60 degrees and the minimal RMSD between the ring in question and any Mogul-identified rings is also greater than 60 degrees, then that ring is considered an outlier. The outliers are highlighted in purple. The color gray indicates Mogul did not find sufficient equivalents in the CSD to analyse the geometry.



5.7 Other polymers [i](#)

There are no such residues in this entry.

5.8 Polymer linkage issues [i](#)

There are no chain breaks in this entry.

6 Fit of model and data

6.1 Protein, DNA and RNA chains

In the following table, the column labelled ‘#RSRZ > 2’ contains the number (and percentage) of RSRZ outliers, followed by percent RSRZ outliers for the chain as percentile scores relative to all X-ray entries and entries of similar resolution. The OWAB column contains the minimum, median, 95th percentile and maximum values of the occupancy-weighted average B-factor per residue. The column labelled ‘Q < 0.9’ lists the number of (and percentage) of residues with an average occupancy less than 0.9.

Mol	Chain	Analysed	<RSRZ>	#RSRZ>2	OWAB(Å ²)	Q<0.9
1	A	355/404 (87%)	0.13	14 (3%) 39 36	38, 61, 107, 140	0
1	B	365/404 (90%)	0.14	13 (3%) 42 39	41, 60, 100, 119	0
All	All	720/808 (89%)	0.14	27 (3%) 40 37	38, 60, 105, 140	0

All (27) RSRZ outliers are listed below:

Mol	Chain	Res	Type	RSRZ
1	B	567	THR	7.2
1	B	420	PHE	6.5
1	B	569	TYR	5.3
1	A	626	ILE	4.3
1	A	569	TYR	4.1
1	A	695	LEU	4.1
1	A	567	THR	4.0
1	B	717	MET	3.7
1	A	696	GLU	3.5
1	B	566	GLY	3.5
1	B	626	ILE	3.4
1	B	540	HIS	3.4
1	A	546	GLN	3.4
1	A	694	GLY	3.3
1	B	696	GLU	3.2
1	A	697	ASP	3.1
1	B	503	HIS	2.8
1	A	627	MET	2.5
1	A	600	ILE	2.5
1	A	625	ILE	2.5
1	B	435	ARG	2.4
1	A	620	TYR	2.3
1	B	695	LEU	2.2
1	A	693	SER	2.2

Continued on next page...

Continued from previous page...

Mol	Chain	Res	Type	RSRZ
1	A	541	LEU	2.2
1	B	716	ASP	2.1
1	B	694	GLY	2.0

6.2 Non-standard residues in protein, DNA, RNA chains [i](#)

There are no non-standard protein/DNA/RNA residues in this entry.

6.3 Carbohydrates [i](#)

There are no monosaccharides in this entry.

6.4 Ligands [i](#)

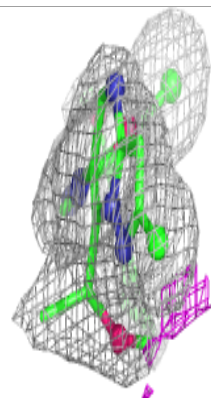
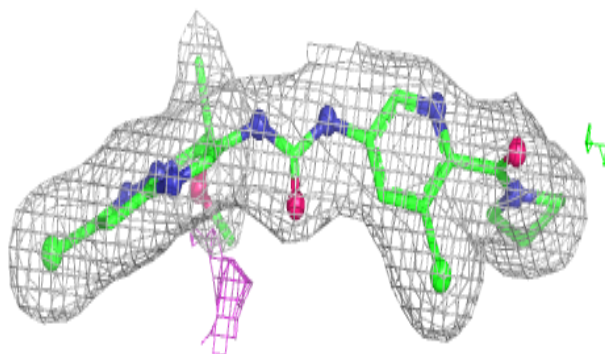
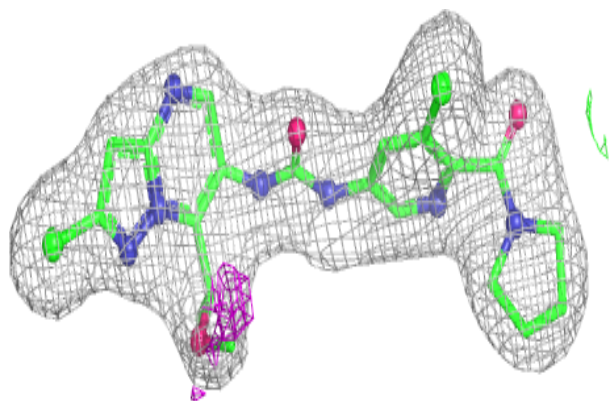
In the following table, the Atoms column lists the number of modelled atoms in the group and the number defined in the chemical component dictionary. The B-factors column lists the minimum, median, 95th percentile and maximum values of B factors of atoms in the group. The column labelled 'Q< 0.9' lists the number of atoms with occupancy less than 0.9.

Mol	Type	Chain	Res	Atoms	RSCC	RSR	B-factors(Å ²)	Q<0.9
4	GOL	B	802	6/6	0.82	0.19	78,82,83,84	0
3	MG	A	803	1/1	0.91	0.10	82,82,82,82	0
3	MG	A	802	1/1	0.94	0.12	69,69,69,69	0
4	GOL	A	804	6/6	0.95	0.17	55,65,67,70	0
2	CW5	B	801	32/32	0.98	0.14	43,48,52,53	0
2	CW5	A	801	32/32	0.99	0.15	38,45,50,52	0

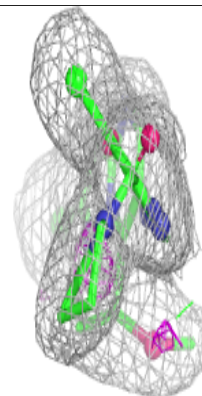
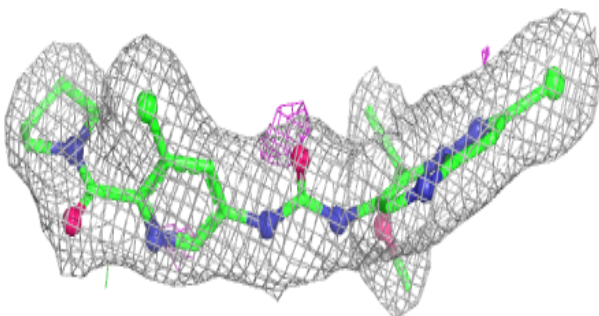
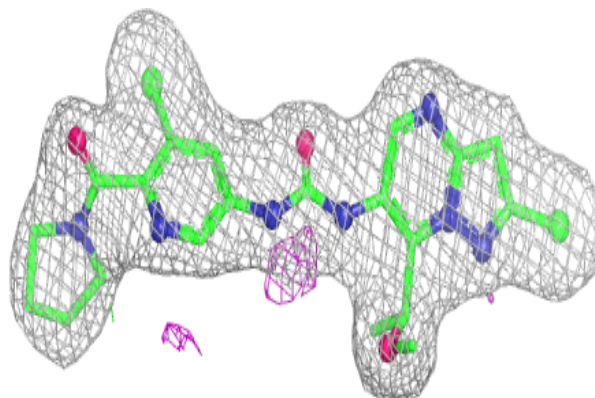
The following is a graphical depiction of the model fit to experimental electron density of all instances of the Ligand of Interest. In addition, ligands with molecular weight > 250 and outliers as shown on the geometry validation Tables will also be included. Each fit is shown from different orientation to approximate a three-dimensional view.

Electron density around CW5 B 801:

$2mF_o-DF_c$ (at 0.7 rmsd) in gray
 mF_o-DF_c (at 3 rmsd) in purple (negative)
and green (positive)

**Electron density around CW5 A 801:**

$2mF_o-DF_c$ (at 0.7 rmsd) in gray
 mF_o-DF_c (at 3 rmsd) in purple (negative)
and green (positive)



6.5 Other polymers [i](#)

There are no such residues in this entry.