



Full wwPDB EM Validation Report ⓘ

Mar 12, 2025 – 04:43 pm GMT

PDB ID : 9F3H
EMDB ID : EMD-50174
Title : Undecorated 13pf mosaic 20%E254Q - 80% E254QN microtubule from recombinant human tubulin
Authors : Estevez-Gallego, J.; Blum, T.B.; Steinmetz, M.O.; Surrey, T.
Deposited on : 2024-04-25
Resolution : 4.30 Å(reported)
Based on initial model : 7sj7

This is a Full wwPDB EM Validation Report for a publicly released PDB entry.

We welcome your comments at validation@mail.wwpdb.org

A user guide is available at

<https://www.wwpdb.org/validation/2017/EMValidationReportHelp>
with specific help available everywhere you see the ⓘ symbol.

The types of validation reports are described at

<http://www.wwpdb.org/validation/2017/FAQs#types>.

The following versions of software and data (see [references ⓘ](#)) were used in the production of this report:

EMDB validation analysis : 0.0.1.dev117
Mogul : 1.8.4, CSD as541be (2020)
MolProbity : 4.02b-467
buster-report : 1.1.7 (2018)
Percentile statistics : 20231227.v01 (using entries in the PDB archive December 27th 2023)
MapQ : 1.9.13
Ideal geometry (proteins) : Engh & Huber (2001)
Ideal geometry (DNA, RNA) : Parkinson et al. (1996)
Validation Pipeline (wwPDB-VP) : 2.41

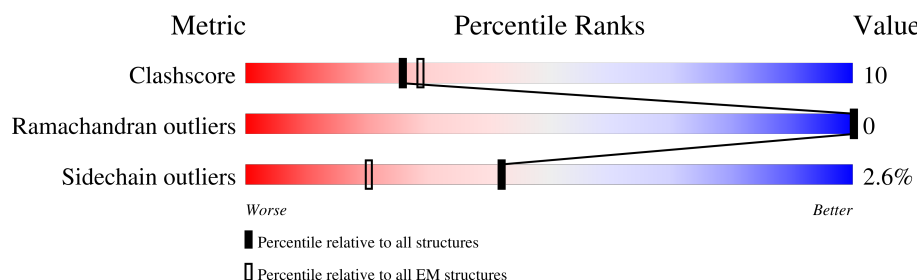
1 Overall quality at a glance

The following experimental techniques were used to determine the structure:

ELECTRON MICROSCOPY

The reported resolution of this entry is 4.30 Å.

Percentile scores (ranging between 0-100) for global validation metrics of the entry are shown in the following graphic. The table shows the number of entries on which the scores are based.



Metric	Whole archive (#Entries)	EM structures (#Entries)
Clashscore	210492	15764
Ramachandran outliers	207382	16835
Sidechain outliers	206894	16415

The table below summarises the geometric issues observed across the polymeric chains and their fit to the map. The red, orange, yellow and green segments of the bar indicate the fraction of residues that contain outliers for ≥ 3 , 2, 1 and 0 types of geometric quality criteria respectively. A grey segment represents the fraction of residues that are not modelled. The numeric value for each fraction is indicated below the corresponding segment, with a dot representing fractions $\leq 5\%$. The upper red bar (where present) indicates the fraction of residues that have poor fit to the EM map (all-atom inclusion $< 40\%$). The numeric value is given above the bar.

Mol	Chain	Length	Quality of chain
1	A	453	
1	C	453	
1	E	453	
1	G	453	
1	I	453	
1	K	453	
2	B	456	
2	D	456	

Continued on next page...

Continued from previous page...

Mol	Chain	Length	Quality of chain
2	F	456	<div><div></div><div>72%21%6%</div></div>
2	N	456	<div><div></div><div>73%21%6%</div></div>
2	P	456	<div><div></div><div>72%22%6%</div></div>
2	R	456	<div><div></div><div>74%20%6%</div></div>

2 Entry composition

There are 4 unique types of molecules in this entry. The entry contains 41100 atoms, of which 0 are hydrogens and 0 are deuteriums.

In the tables below, the AltConf column contains the number of residues with at least one atom in alternate conformation and the Trace column contains the number of residues modelled with at most 2 atoms.

- Molecule 1 is a protein called Detyrosinated tubulin alpha-1B chain.

Mol	Chain	Residues	Atoms					AltConf	Trace
1	A	435	Total	C	N	O	S	0	0
			3417	2164	585	646	22		
1	G	435	Total	C	N	O	S	0	0
			3417	2164	585	646	22		
1	C	435	Total	C	N	O	S	0	0
			3417	2164	585	646	22		
1	I	435	Total	C	N	O	S	0	0
			3417	2164	585	646	22		
1	E	435	Total	C	N	O	S	0	0
			3417	2164	585	646	22		
1	K	435	Total	C	N	O	S	0	0
			3417	2164	585	646	22		

There are 102 discrepancies between the modelled and reference sequences:

Chain	Residue	Modelled	Actual	Comment	Reference
A	40	HIS	-	linker	PDB ?
A	41	HIS	-	linker	PDB ?
A	42	HIS	-	linker	PDB ?
A	42A	HIS	-	linker	PDB ?
A	42B	HIS	-	linker	PDB ?
A	42C	HIS	-	linker	PDB ?
A	42D	GLY	-	linker	PDB ?
A	42E	GLY	-	linker	PDB ?
A	42F	GLY	-	linker	PDB ?
A	42G	HIS	-	linker	PDB ?
A	42H	HIS	-	linker	PDB ?
A	42I	HIS	-	linker	PDB ?
A	42J	PHE	-	linker	PDB ?
A	42K	ASN	-	linker	PDB ?
A	42L	THR	-	linker	PDB ?
A	42M	PHE	-	linker	PDB ?
A	254	ASN	GLU	engineered mutation	UNP P68363
G	40	HIS	-	linker	PDB ?

Continued on next page...

Continued from previous page...

Chain	Residue	Modelled	Actual	Comment	Reference
G	41	HIS	-	linker	PDB ?
G	42	HIS	-	linker	PDB ?
G	42A	HIS	-	linker	PDB ?
G	42B	HIS	-	linker	PDB ?
G	42C	HIS	-	linker	PDB ?
G	42D	GLY	-	linker	PDB ?
G	42E	GLY	-	linker	PDB ?
G	42F	GLY	-	linker	PDB ?
G	42G	HIS	-	linker	PDB ?
G	42H	HIS	-	linker	PDB ?
G	42I	HIS	-	linker	PDB ?
G	42J	PHE	-	linker	PDB ?
G	42K	ASN	-	linker	PDB ?
G	42L	THR	-	linker	PDB ?
G	42M	PHE	-	linker	PDB ?
G	254	ASN	GLU	engineered mutation	UNP P68363
C	40	HIS	-	linker	PDB ?
C	41	HIS	-	linker	PDB ?
C	42	HIS	-	linker	PDB ?
C	42A	HIS	-	linker	PDB ?
C	42B	HIS	-	linker	PDB ?
C	42C	HIS	-	linker	PDB ?
C	42D	GLY	-	linker	PDB ?
C	42E	GLY	-	linker	PDB ?
C	42F	GLY	-	linker	PDB ?
C	42G	HIS	-	linker	PDB ?
C	42H	HIS	-	linker	PDB ?
C	42I	HIS	-	linker	PDB ?
C	42J	PHE	-	linker	PDB ?
C	42K	ASN	-	linker	PDB ?
C	42L	THR	-	linker	PDB ?
C	42M	PHE	-	linker	PDB ?
C	254	ASN	GLU	engineered mutation	UNP P68363
I	40	HIS	-	linker	PDB ?
I	41	HIS	-	linker	PDB ?
I	42	HIS	-	linker	PDB ?
I	42A	HIS	-	linker	PDB ?
I	42B	HIS	-	linker	PDB ?
I	42C	HIS	-	linker	PDB ?
I	42D	GLY	-	linker	PDB ?
I	42E	GLY	-	linker	PDB ?
I	42F	GLY	-	linker	PDB ?

Continued on next page...

Continued from previous page...

Chain	Residue	Modelled	Actual	Comment	Reference
I	42G	HIS	-	linker	PDB ?
I	42H	HIS	-	linker	PDB ?
I	42I	HIS	-	linker	PDB ?
I	42J	PHE	-	linker	PDB ?
I	42K	ASN	-	linker	PDB ?
I	42L	THR	-	linker	PDB ?
I	42M	PHE	-	linker	PDB ?
I	254	ASN	GLU	engineered mutation	UNP P68363
E	40	HIS	-	linker	PDB ?
E	41	HIS	-	linker	PDB ?
E	42	HIS	-	linker	PDB ?
E	42A	HIS	-	linker	PDB ?
E	42B	HIS	-	linker	PDB ?
E	42C	HIS	-	linker	PDB ?
E	42D	GLY	-	linker	PDB ?
E	42E	GLY	-	linker	PDB ?
E	42F	GLY	-	linker	PDB ?
E	42G	HIS	-	linker	PDB ?
E	42H	HIS	-	linker	PDB ?
E	42I	HIS	-	linker	PDB ?
E	42J	PHE	-	linker	PDB ?
E	42K	ASN	-	linker	PDB ?
E	42L	THR	-	linker	PDB ?
E	42M	PHE	-	linker	PDB ?
E	254	ASN	GLU	engineered mutation	UNP P68363
K	40	HIS	-	linker	PDB ?
K	41	HIS	-	linker	PDB ?
K	42	HIS	-	linker	PDB ?
K	42A	HIS	-	linker	PDB ?
K	42B	HIS	-	linker	PDB ?
K	42C	HIS	-	linker	PDB ?
K	42D	GLY	-	linker	PDB ?
K	42E	GLY	-	linker	PDB ?
K	42F	GLY	-	linker	PDB ?
K	42G	HIS	-	linker	PDB ?
K	42H	HIS	-	linker	PDB ?
K	42I	HIS	-	linker	PDB ?
K	42J	PHE	-	linker	PDB ?
K	42K	ASN	-	linker	PDB ?
K	42L	THR	-	linker	PDB ?
K	42M	PHE	-	linker	PDB ?
K	254	ASN	GLU	engineered mutation	UNP P68363

- Molecule 2 is a protein called Tubulin beta-3 chain.

Mol	Chain	Residues	Atoms					AltConf	Trace
2	B	429	Total	C	N	O	S	0	0
			3367	2117	577	648	25		
2	N	429	Total	C	N	O	S	0	0
			3367	2117	577	648	25		
2	D	429	Total	C	N	O	S	0	0
			3367	2117	577	648	25		
2	P	429	Total	C	N	O	S	0	0
			3367	2117	577	648	25		
2	F	429	Total	C	N	O	S	0	0
			3367	2117	577	648	25		
2	R	429	Total	C	N	O	S	0	0
			3367	2117	577	648	25		

There are 36 discrepancies between the modelled and reference sequences:

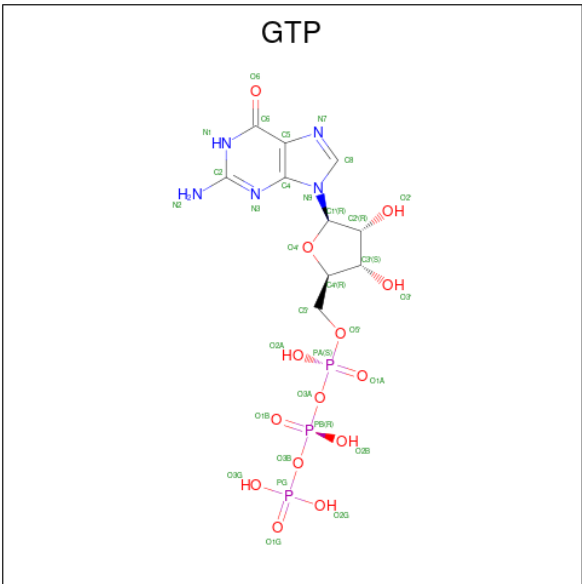
Chain	Residue	Modelled	Actual	Comment	Reference
B	451	GLU	-	expression tag	UNP Q13509
B	452	ASN	-	expression tag	UNP Q13509
B	453	LEU	-	expression tag	UNP Q13509
B	454	TYR	-	expression tag	UNP Q13509
B	455	PHE	-	expression tag	UNP Q13509
B	456	GLN	-	expression tag	UNP Q13509
N	451	GLU	-	expression tag	UNP Q13509
N	452	ASN	-	expression tag	UNP Q13509
N	453	LEU	-	expression tag	UNP Q13509
N	454	TYR	-	expression tag	UNP Q13509
N	455	PHE	-	expression tag	UNP Q13509
N	456	GLN	-	expression tag	UNP Q13509
D	451	GLU	-	expression tag	UNP Q13509
D	452	ASN	-	expression tag	UNP Q13509
D	453	LEU	-	expression tag	UNP Q13509
D	454	TYR	-	expression tag	UNP Q13509
D	455	PHE	-	expression tag	UNP Q13509
D	456	GLN	-	expression tag	UNP Q13509
P	451	GLU	-	expression tag	UNP Q13509
P	452	ASN	-	expression tag	UNP Q13509
P	453	LEU	-	expression tag	UNP Q13509
P	454	TYR	-	expression tag	UNP Q13509
P	455	PHE	-	expression tag	UNP Q13509
P	456	GLN	-	expression tag	UNP Q13509
F	451	GLU	-	expression tag	UNP Q13509
F	452	ASN	-	expression tag	UNP Q13509

Continued on next page...

Continued from previous page...

Chain	Residue	Modelled	Actual	Comment	Reference
F	453	LEU	-	expression tag	UNP Q13509
F	454	TYR	-	expression tag	UNP Q13509
F	455	PHE	-	expression tag	UNP Q13509
F	456	GLN	-	expression tag	UNP Q13509
R	451	GLU	-	expression tag	UNP Q13509
R	452	ASN	-	expression tag	UNP Q13509
R	453	LEU	-	expression tag	UNP Q13509
R	454	TYR	-	expression tag	UNP Q13509
R	455	PHE	-	expression tag	UNP Q13509
R	456	GLN	-	expression tag	UNP Q13509

- Molecule 3 is GUANOSINE-5'-TRIPHOSPHATE (three-letter code: GTP) (formula: C₁₀H₁₆N₅O₁₄P₃) (labeled as "Ligand of Interest" by depositor).



Mol	Chain	Residues	Atoms					AltConf
3	A	1	Total	C	N	O	P	0
			32	10	5	14	3	
3	B	1	Total	C	N	O	P	0
			32	10	5	14	3	
3	G	1	Total	C	N	O	P	0
			32	10	5	14	3	
3	N	1	Total	C	N	O	P	0
			32	10	5	14	3	
3	C	1	Total	C	N	O	P	0
			32	10	5	14	3	
3	D	1	Total	C	N	O	P	0
			32	10	5	14	3	

Continued on next page...

Continued from previous page...

Mol	Chain	Residues	Atoms					AltConf
3	I	1	Total	C	N	O	P	0
			32	10	5	14	3	
3	P	1	Total	C	N	O	P	0
			32	10	5	14	3	
3	E	1	Total	C	N	O	P	0
			32	10	5	14	3	
3	F	1	Total	C	N	O	P	0
			32	10	5	14	3	
3	K	1	Total	C	N	O	P	0
			32	10	5	14	3	
3	R	1	Total	C	N	O	P	0
			32	10	5	14	3	

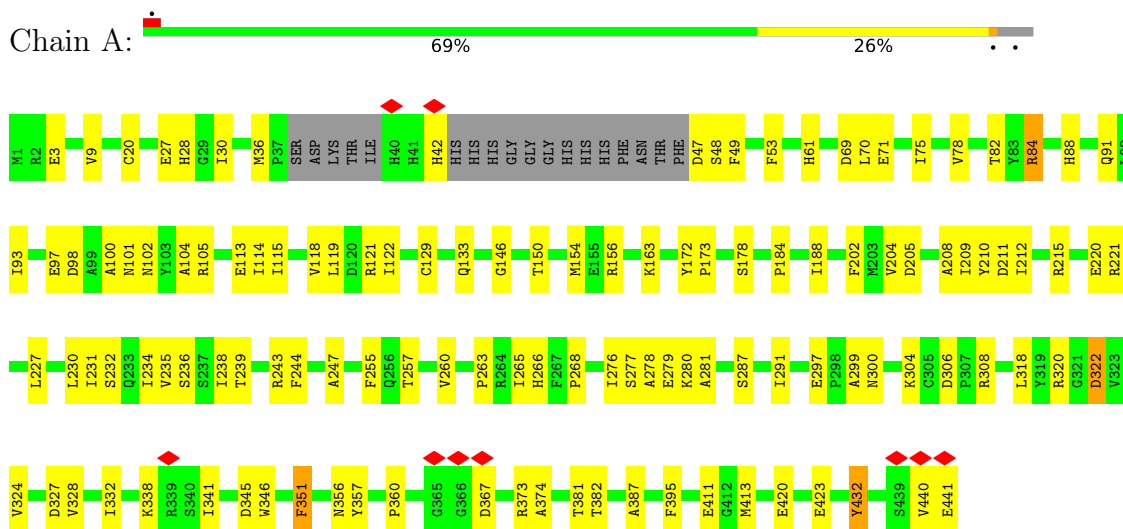
- Molecule 4 is MAGNESIUM ION (three-letter code: MG) (formula: Mg) (labeled as "Ligand of Interest" by depositor).

Mol	Chain	Residues	Atoms		AltConf
4	A	1	Total	Mg	0
			1	1	
4	B	1	Total	Mg	0
			1	1	
4	G	1	Total	Mg	0
			1	1	
4	N	1	Total	Mg	0
			1	1	
4	C	1	Total	Mg	0
			1	1	
4	D	1	Total	Mg	0
			1	1	
4	I	1	Total	Mg	0
			1	1	
4	P	1	Total	Mg	0
			1	1	
4	E	1	Total	Mg	0
			1	1	
4	F	1	Total	Mg	0
			1	1	
4	K	1	Total	Mg	0
			1	1	
4	R	1	Total	Mg	0
			1	1	

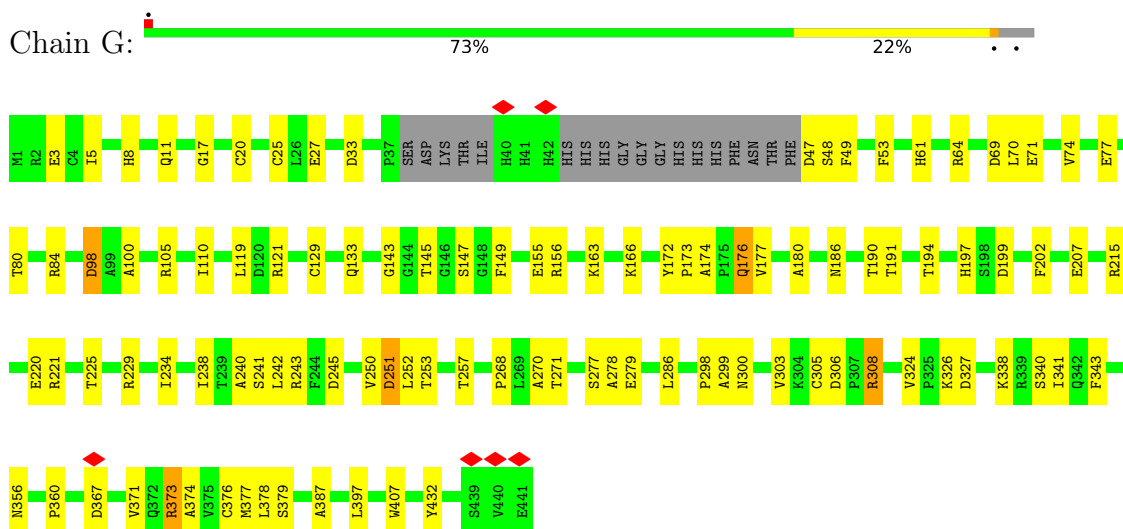
3 Residue-property plots

These plots are drawn for all protein, RNA, DNA and oligosaccharide chains in the entry. The first graphic for a chain summarises the proportions of the various outlier classes displayed in the second graphic. The second graphic shows the sequence view annotated by issues in geometry and atom inclusion in map density. Residues are color-coded according to the number of geometric quality criteria for which they contain at least one outlier: green = 0, yellow = 1, orange = 2 and red = 3 or more. A red diamond above a residue indicates a poor fit to the EM map for this residue (all-atom inclusion < 40%). Stretches of 2 or more consecutive residues without any outlier are shown as a green connector. Residues present in the sample, but not in the model, are shown in grey.

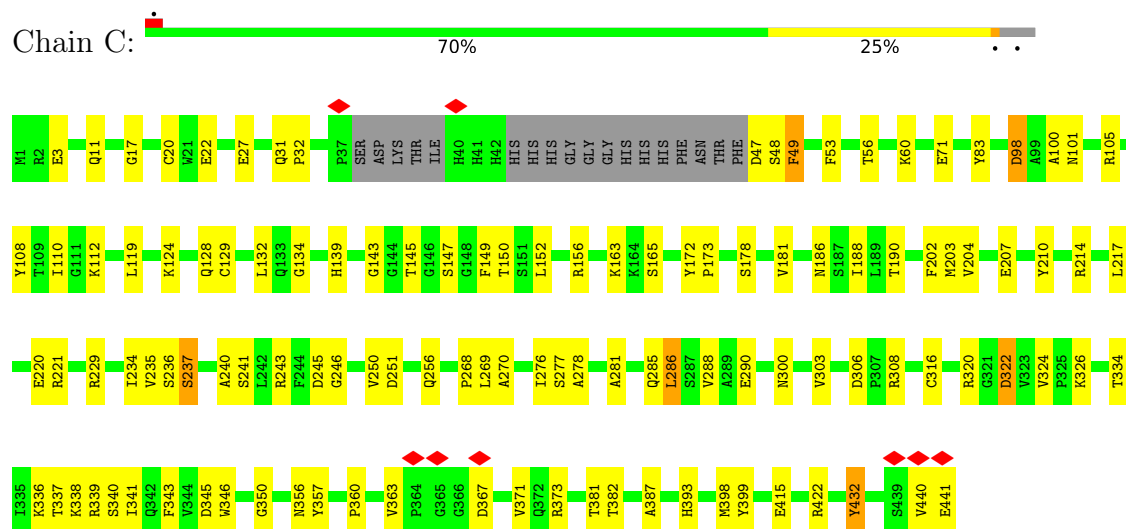
- Molecule 1: Detyrosinated tubulin alpha-1B chain



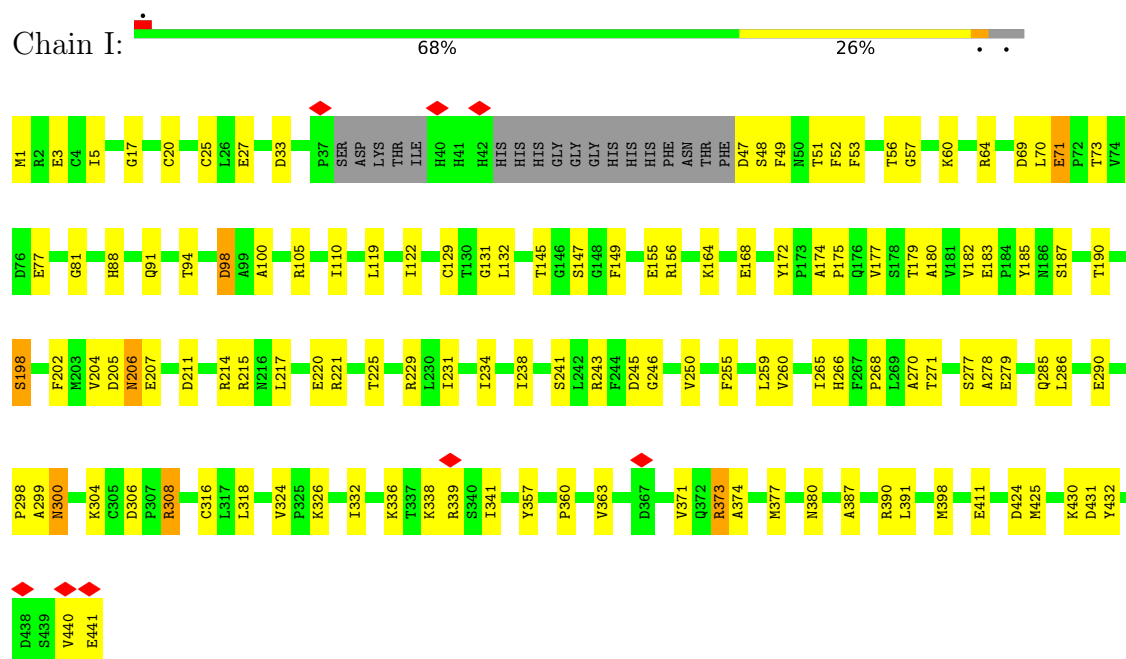
- Molecule 1: Detyrosinated tubulin alpha-1B chain



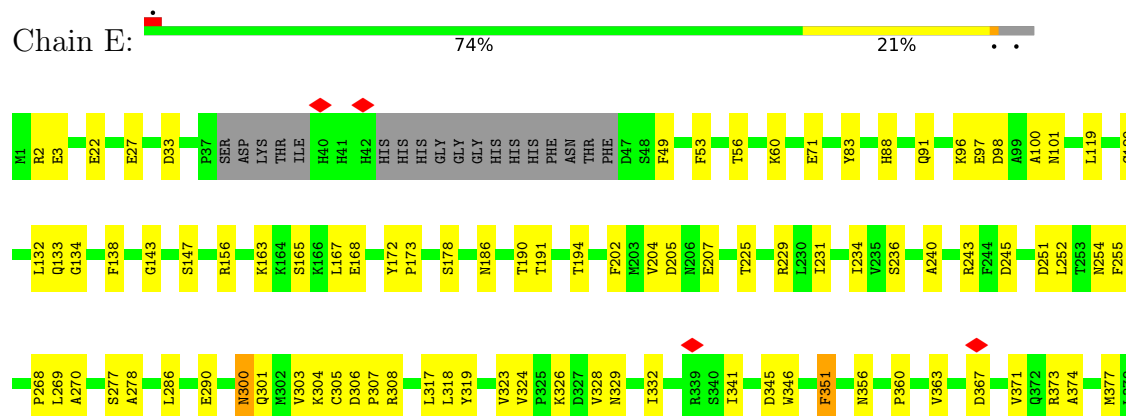
- Molecule 1: Detyrosinated tubulin alpha-1B chain



- Molecule 1: Detyrosinated tubulin alpha-1B chain

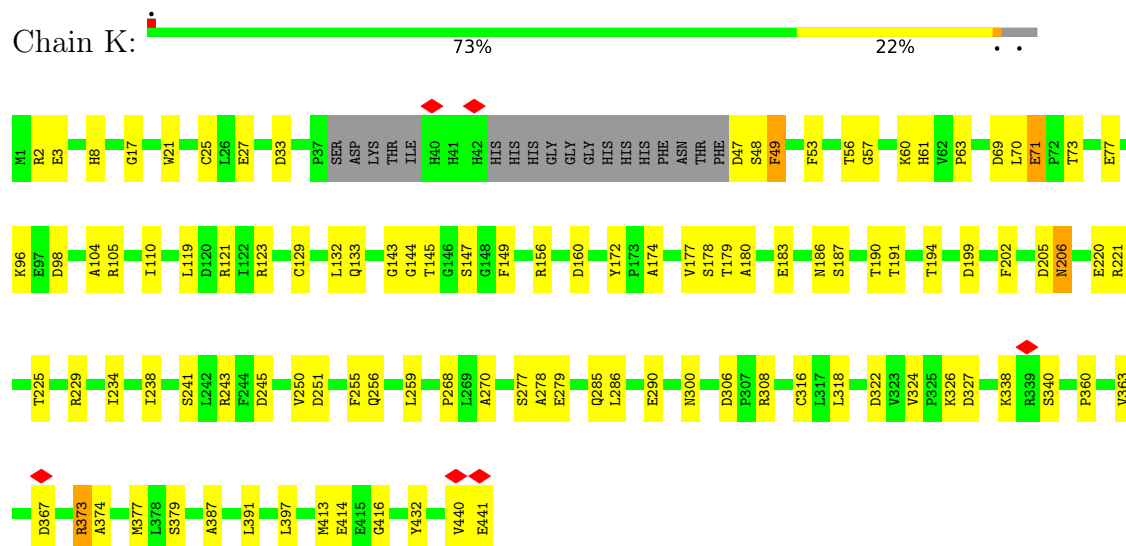


- Molecule 1: Detyrosinated tubulin alpha-1B chain

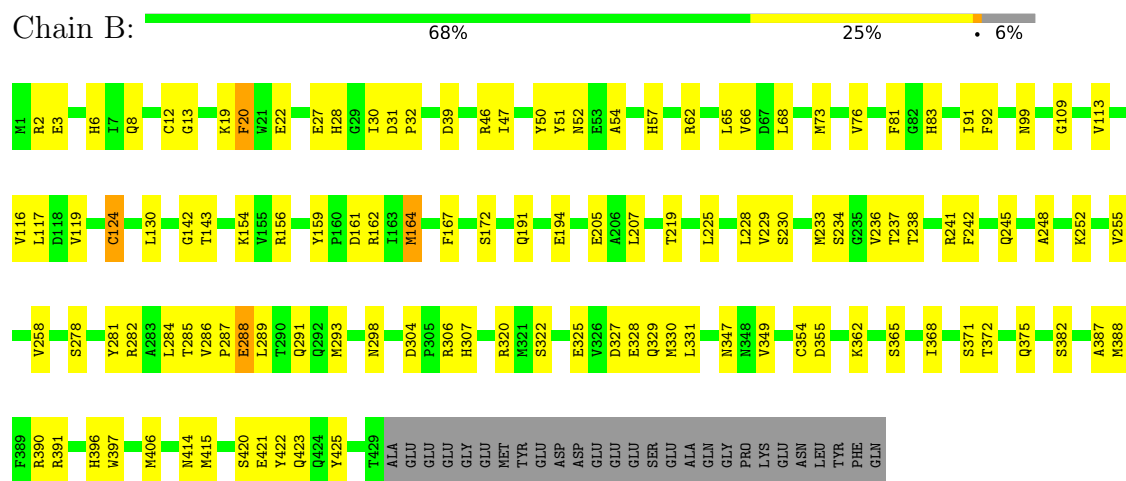


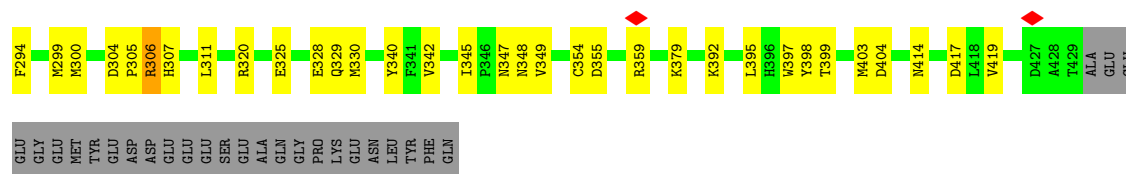


- Molecule 1: Detyrosinated tubulin alpha-1B chain



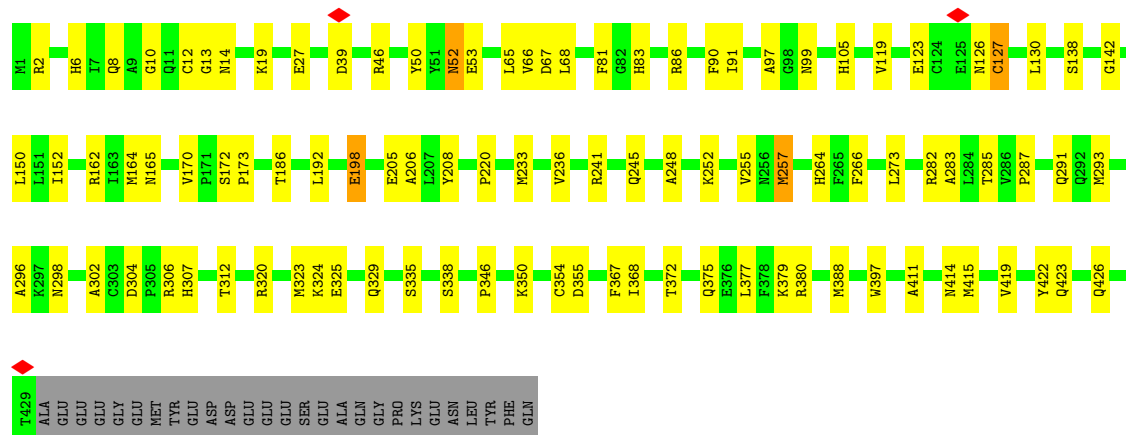
- Molecule 2: Tubulin beta-3 chain





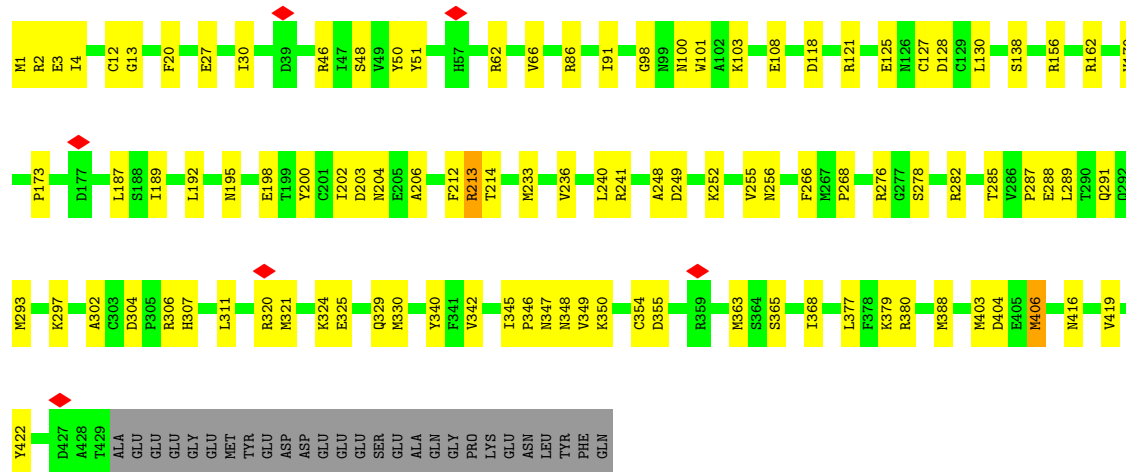
• Molecule 2: Tubulin beta-3 chain

Chain D: 72% 21% 6%



• Molecule 2: Tubulin beta-3 chain

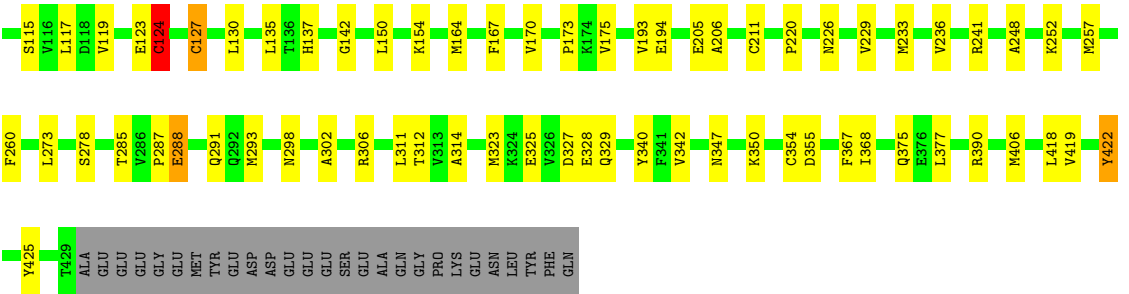
Chain P: 72% 22% 6%



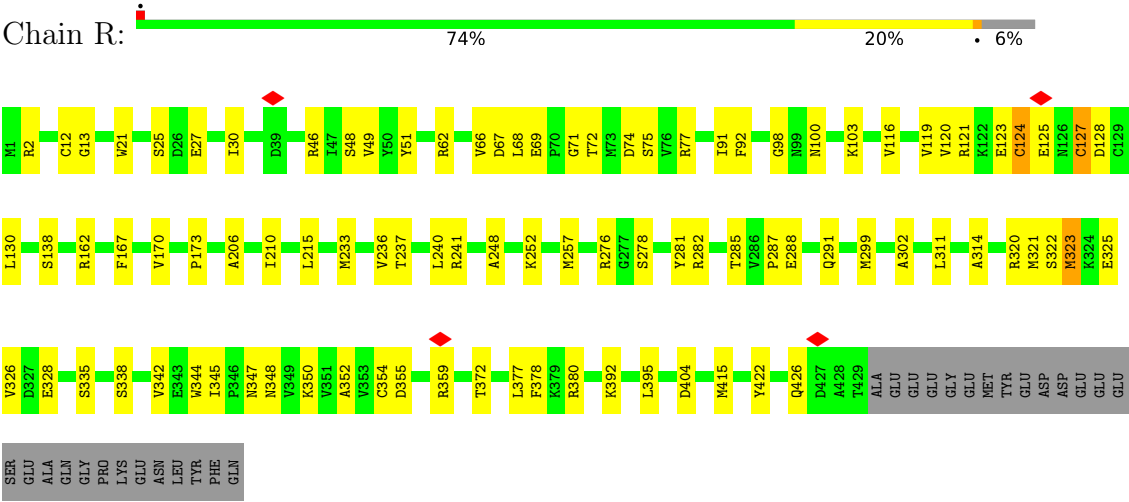
• Molecule 2: Tubulin beta-3 chain

Chain F: 72% 21% 6%





● Molecule 2: Tubulin beta-3 chain



4 Experimental information

Property	Value	Source
EM reconstruction method	HELICAL	Depositor
Imposed symmetry	HELICAL, twist=-27.6692°, rise=9.59709 Å, axial sym=C13	Depositor
Number of segments used	30691	Depositor
Resolution determination method	FSC 0.143 CUT-OFF	Depositor
CTF correction method	PHASE FLIPPING AND AMPLITUDE CORRECTION	Depositor
Microscope	TFS GLACIOS	Depositor
Voltage (kV)	200	Depositor
Electron dose ($e^-/\text{Å}^2$)	7.25	Depositor
Minimum defocus (nm)	1000	Depositor
Maximum defocus (nm)	2500	Depositor
Magnification	Not provided	
Image detector	FEI FALCON IV (4k x 4k)	Depositor
Maximum map value	0.088	Depositor
Minimum map value	-0.047	Depositor
Average map value	0.000	Depositor
Map value standard deviation	0.004	Depositor
Recommended contour level	0.01	Depositor
Map size (Å)	573.0, 573.0, 573.0	wwPDB
Map dimensions	600, 600, 600	wwPDB
Map angles (°)	90.0, 90.0, 90.0	wwPDB
Pixel spacing (Å)	0.955, 0.955, 0.955	Depositor

5 Model quality

5.1 Standard geometry

Bond lengths and bond angles in the following residue types are not validated in this section: MG, GTP

The Z score for a bond length (or angle) is the number of standard deviations the observed value is removed from the expected value. A bond length (or angle) with $|Z| > 5$ is considered an outlier worth inspection. RMSZ is the root-mean-square of all Z scores of the bond lengths (or angles).

Mol	Chain	Bond lengths		Bond angles	
		RMSZ	$\# Z > 5$	RMSZ	$\# Z > 5$
1	A	0.27	0/3496	0.50	1/4745 (0.0%)
1	C	0.26	0/3496	0.52	2/4745 (0.0%)
1	E	0.26	0/3496	0.49	0/4745
1	G	0.26	0/3496	0.49	0/4745
1	I	0.26	0/3496	0.50	0/4745
1	K	0.25	0/3496	0.50	1/4745 (0.0%)
2	B	0.27	0/3442	0.54	0/4663
2	D	0.25	0/3442	0.51	1/4663 (0.0%)
2	F	0.25	0/3442	0.52	2/4663 (0.0%)
2	N	0.25	0/3442	0.51	0/4663
2	P	0.25	0/3442	0.51	1/4663 (0.0%)
2	R	0.25	0/3442	0.53	2/4663 (0.0%)
All	All	0.26	0/41628	0.51	10/56448 (0.0%)

Chiral center outliers are detected by calculating the chiral volume of a chiral center and verifying if the center is modelled as a planar moiety or with the opposite hand. A planarity outlier is detected by checking planarity of atoms in a peptide group, atoms in a mainchain group or atoms of a sidechain that are expected to be planar.

Mol	Chain	#Chirality outliers	#Planarity outliers
2	F	0	1

There are no bond length outliers.

All (10) bond angle outliers are listed below:

Mol	Chain	Res	Type	Atoms	Z	Observed(°)	Ideal(°)
2	R	127	CYS	CA-CB-SG	8.25	128.85	114.00
1	K	322	ASP	CB-CG-OD2	6.43	124.08	118.30
2	F	124	CYS	CA-CB-SG	6.40	125.53	114.00
2	R	124	CYS	CA-CB-SG	6.35	125.42	114.00

Continued on next page...

Continued from previous page...

Mol	Chain	Res	Type	Atoms	Z	Observed(°)	Ideal(°)
1	C	286	LEU	CA-CB-CG	6.25	129.66	115.30
2	P	118	ASP	CB-CG-OD2	5.73	123.45	118.30
2	D	127	CYS	CA-CB-SG	5.68	124.22	114.00
2	F	127	CYS	CA-CB-SG	5.54	123.98	114.00
1	C	322	ASP	CB-CG-OD2	5.22	123.00	118.30
1	A	322	ASP	CB-CG-OD1	5.12	122.91	118.30

There are no chirality outliers.

All (1) planarity outliers are listed below:

Mol	Chain	Res	Type	Group
2	F	124	CYS	Peptide

5.2 Too-close contacts ⓘ

In the following table, the Non-H and H(model) columns list the number of non-hydrogen atoms and hydrogen atoms in the chain respectively. The H(added) column lists the number of hydrogen atoms added and optimized by MolProbity. The Clashes column lists the number of clashes within the asymmetric unit, whereas Symm-Clashes lists symmetry-related clashes.

Mol	Chain	Non-H	H(model)	H(added)	Clashes	Symm-Clashes
1	A	3417	0	3321	85	0
1	C	3417	0	3321	88	0
1	E	3417	0	3321	67	0
1	G	3417	0	3321	70	0
1	I	3417	0	3321	81	0
1	K	3417	0	3321	64	0
2	B	3367	0	3251	85	0
2	D	3367	0	3249	68	0
2	F	3367	0	3249	60	0
2	N	3367	0	3251	63	0
2	P	3367	0	3251	68	0
2	R	3367	0	3249	57	0
3	A	32	0	12	1	0
3	B	32	0	12	3	0
3	C	32	0	12	2	0
3	D	32	0	12	2	0
3	E	32	0	12	0	0
3	F	32	0	12	3	0
3	G	32	0	12	1	0
3	I	32	0	12	2	0

Continued on next page...

Continued from previous page...

Mol	Chain	Non-H	H(model)	H(added)	Clashes	Symm-Clashes
3	K	32	0	12	1	0
3	N	32	0	12	1	0
3	P	32	0	12	1	0
3	R	32	0	12	1	0
4	A	1	0	0	0	0
4	B	1	0	0	0	0
4	C	1	0	0	0	0
4	D	1	0	0	0	0
4	E	1	0	0	0	0
4	F	1	0	0	0	0
4	G	1	0	0	0	0
4	I	1	0	0	0	0
4	K	1	0	0	0	0
4	N	1	0	0	0	0
4	P	1	0	0	0	0
4	R	1	0	0	0	0
All	All	41100	0	39570	809	0

The all-atom clashscore is defined as the number of clashes found per 1000 atoms (including hydrogen atoms). The all-atom clashscore for this structure is 10.

All (809) close contacts within the same asymmetric unit are listed below, sorted by their clash magnitude.

Atom-1	Atom-2	Interatomic distance (Å)	Clash overlap (Å)
2:P:285:THR:HG22	2:P:287:PRO:HD2	1.47	0.93
1:A:257:THR:HA	2:B:397:TRP:HZ3	1.41	0.85
1:K:377:MET:SD	1:K:379:SER:OG	2.40	0.80
2:R:2:ARG:HH21	2:R:46:ARG:HH22	1.30	0.79
2:P:2:ARG:HH21	2:P:46:ARG:HH22	1.31	0.78
1:I:71:GLU:HB3	1:I:98:ASP:HB3	1.65	0.77
2:N:354:CYS:SG	2:N:355:ASP:N	2.57	0.76
1:A:239:THR:HG22	1:A:243:ARG:HE	1.48	0.76
2:B:293:MET:SD	2:B:365:SER:OG	2.44	0.75
2:R:354:CYS:SG	2:R:355:ASP:N	2.58	0.75
2:N:2:ARG:HH21	2:N:46:ARG:HH22	1.32	0.74
1:C:71:GLU:HB3	1:C:98:ASP:HB3	1.70	0.74
2:B:2:ARG:HH21	2:B:46:ARG:HH12	1.37	0.73
2:N:379:LYS:HE3	2:N:419:VAL:HG11	1.71	0.73
1:C:27:GLU:OE1	1:C:243:ARG:NH1	2.22	0.71
2:F:287:PRO:HA	2:F:329:GLN:HE22	1.54	0.71
1:C:3:GLU:HG3	1:C:129:CYS:HB2	1.72	0.71

Continued on next page...

Continued from previous page...

Atom-1	Atom-2	Interatomic distance (Å)	Clash overlap (Å)
1:A:3:GLU:HG3	1:A:129:CYS:HB2	1.72	0.71
2:P:48:SER:O	2:P:62:ARG:NH2	2.23	0.71
1:K:77:GLU:N	1:K:77:GLU:OE2	2.22	0.71
1:I:49:PHE:HB2	1:I:53:PHE:HB2	1.71	0.71
1:E:27:GLU:OE1	1:E:243:ARG:NH1	2.23	0.70
1:A:260:VAL:HG13	2:B:397:TRP:HH2	1.56	0.70
2:N:54:ALA:HB3	2:N:58:LYS:HB3	1.74	0.70
2:N:248:ALA:HA	2:N:252:LYS:HD3	1.74	0.70
1:C:286:LEU:HD11	1:C:371:VAL:HG23	1.74	0.69
1:K:49:PHE:HB2	1:K:53:PHE:HB2	1.74	0.69
2:P:311:LEU:HD23	2:P:342:VAL:HG21	1.74	0.69
2:B:375:GLN:HE21	2:B:423:GLN:HB2	1.57	0.68
1:C:49:PHE:HB2	1:C:53:PHE:HB2	1.76	0.68
2:N:57:HIS:O	2:N:57:HIS:ND1	2.24	0.68
1:K:229:ARG:HD2	1:K:363:VAL:HG21	1.75	0.68
2:B:354:CYS:SG	2:B:355:ASP:N	2.65	0.68
2:D:354:CYS:SG	2:D:355:ASP:N	2.66	0.68
1:E:71:GLU:HB3	1:E:98:ASP:HB3	1.75	0.68
1:I:234:ILE:HD12	1:I:270:ALA:HB1	1.75	0.67
1:C:322:ASP:OD2	1:C:373:ARG:NH1	2.28	0.67
2:N:100:ASN:HB3	2:N:103:LYS:HB2	1.76	0.67
2:D:10:GLY:O	2:D:14:ASN:ND2	2.28	0.67
1:K:3:GLU:HG3	1:K:129:CYS:HB2	1.76	0.67
1:K:324:VAL:HG12	1:K:326:LYS:H	1.60	0.67
1:K:199:ASP:OD2	1:K:256:GLN:NE2	2.27	0.67
1:I:225:THR:HG22	1:I:229:ARG:HH21	1.60	0.67
1:A:71:GLU:HB3	1:A:98:ASP:HB3	1.76	0.67
1:C:98:ASP:OD1	1:C:100:ALA:N	2.27	0.67
2:B:237:THR:HG22	2:B:241:ARG:HE	1.60	0.66
1:A:230:LEU:O	1:A:234:ILE:HD12	1.94	0.66
2:D:325:GLU:OE1	1:I:221:ARG:NH1	2.28	0.66
1:A:27:GLU:OE1	1:A:243:ARG:NH1	2.28	0.66
1:G:324:VAL:HG12	1:G:326:LYS:H	1.60	0.66
1:G:286:LEU:HD22	1:G:371:VAL:HG23	1.78	0.66
2:F:10:GLY:O	2:F:14:ASN:ND2	2.29	0.66
2:P:287:PRO:O	2:P:291:GLN:NE2	2.29	0.65
1:G:49:PHE:HB2	1:G:53:PHE:HB2	1.79	0.65
1:E:3:GLU:HG3	1:E:129:CYS:HB2	1.78	0.65
1:E:377:MET:SD	1:E:379:SER:OG	2.50	0.65
2:B:28:HIS:HD1	2:B:47:ILE:HD12	1.59	0.65
2:B:322:SER:HB2	2:B:325:GLU:OE1	1.97	0.65

Continued on next page...

Continued from previous page...

Atom-1	Atom-2	Interatomic distance (Å)	Clash overlap (Å)
2:N:12:CYS:HG	2:N:138:SER:HG	1.46	0.64
2:B:113:VAL:HA	2:B:116:VAL:HG12	1.80	0.64
2:F:354:CYS:SG	2:F:355:ASP:N	2.70	0.64
1:I:285:GLN:HE21	1:I:290:GLU:HG2	1.63	0.64
1:E:324:VAL:HG12	1:E:326:LYS:H	1.61	0.64
1:A:341:ILE:HD12	1:A:341:ILE:H	1.62	0.64
1:C:356:ASN:OD1	1:C:357:TYR:N	2.31	0.64
2:R:27:GLU:OE1	2:R:241:ARG:NH1	2.27	0.63
2:D:248:ALA:HA	2:D:252:LYS:HD3	1.80	0.63
2:P:354:CYS:SG	2:P:355:ASP:N	2.67	0.63
1:I:324:VAL:HG12	1:I:326:LYS:H	1.63	0.63
1:A:255:PHE:HZ	1:A:318:LEU:HD21	1.63	0.63
2:N:27:GLU:OE1	2:N:241:ARG:NH1	2.30	0.63
2:D:287:PRO:HA	2:D:329:GLN:HE22	1.64	0.63
1:C:147:SER:OG	1:C:190:THR:OG1	2.08	0.62
2:R:311:LEU:HD23	2:R:342:VAL:HG21	1.80	0.62
2:N:311:LEU:HD23	2:N:342:VAL:HG21	1.79	0.62
2:F:347:ASN:ND2	1:K:178:SER:OG	2.32	0.62
1:I:3:GLU:HG3	1:I:129:CYS:HB2	1.81	0.62
1:E:225:THR:HG22	1:E:229:ARG:HH21	1.63	0.62
1:K:33:ASP:O	1:K:60:LYS:NZ	2.32	0.62
2:R:285:THR:HG22	2:R:287:PRO:HD2	1.82	0.62
2:F:56:SER:O	2:F:57:HIS:ND1	2.33	0.62
1:G:241:SER:OG	1:G:250:VAL:O	2.13	0.62
1:A:440:VAL:HG22	1:A:441:GLU:HG3	1.81	0.62
1:E:229:ARG:HD2	1:E:363:VAL:HG11	1.81	0.61
2:N:320:ARG:NH2	2:N:355:ASP:OD1	2.33	0.61
1:C:172:TYR:N	1:C:204:VAL:O	2.33	0.61
1:C:285:GLN:NE2	1:C:290:GLU:OE1	2.33	0.61
1:I:205:ASP:OD1	1:I:206:ASN:N	2.33	0.61
2:F:1:MET:N	2:F:48:SER:OG	2.34	0.61
2:R:236:VAL:HG13	2:R:237:THR:HG23	1.83	0.61
1:K:143:GLY:O	1:K:186:ASN:ND2	2.34	0.61
2:B:3:GLU:OE1	2:B:62:ARG:NH2	2.33	0.60
2:P:213:ARG:NE	2:P:214:THR:OG1	2.34	0.60
1:E:269:LEU:HD11	1:E:301:GLN:HE21	1.66	0.60
2:P:293:MET:SD	2:P:365:SER:OG	2.55	0.60
2:F:170:VAL:HG21	2:F:377:LEU:HD21	1.83	0.60
1:G:143:GLY:O	1:G:186:ASN:ND2	2.33	0.60
1:G:371:VAL:HG22	1:G:373:ARG:H	1.65	0.60
2:B:30:ILE:HG13	2:B:51:TYR:HE2	1.66	0.60

Continued on next page...

Continued from previous page...

Atom-1	Atom-2	Interatomic distance (Å)	Clash overlap (Å)
1:A:244:PHE:HB2	1:A:356:ASN:HD21	1.66	0.60
1:G:119:LEU:HD11	1:G:156:ARG:HB3	1.83	0.60
1:C:256:GLN:HG2	2:D:397:TRP:HH2	1.65	0.60
1:I:241:SER:OG	1:I:250:VAL:O	2.14	0.60
1:A:346:TRP:CG	2:B:391:ARG:HG2	2.37	0.60
3:A:501:GTP:O3G	2:N:252:LYS:NZ	2.33	0.60
1:C:336:LYS:O	1:C:339:ARG:NH2	2.35	0.60
2:D:99:ASN:ND2	3:D:501:GTP:O3G	2.34	0.60
2:P:27:GLU:OE1	2:P:241:ARG:NH1	2.28	0.60
2:P:248:ALA:HA	2:P:252:LYS:HD3	1.84	0.60
2:D:173:PRO:HD2	2:D:205:GLU:OE2	2.02	0.59
1:K:277:SER:OG	1:K:278:ALA:N	2.35	0.59
1:A:322:ASP:OD1	1:A:373:ARG:NH1	2.35	0.59
2:B:331:LEU:HD21	1:G:176:GLN:HG2	1.84	0.59
1:K:191:THR:HA	1:K:194:THR:HG22	1.84	0.59
2:B:327:ASP:OD2	1:G:177:VAL:HG13	2.03	0.59
1:C:22:GLU:OE2	1:C:83:TYR:OH	2.16	0.59
1:C:241:SER:OG	1:C:250:VAL:O	2.14	0.59
1:C:398:MET:HE3	2:P:346:PRO:HD2	1.83	0.59
1:K:367:ASP:OD1	1:K:367:ASP:N	2.36	0.59
1:I:229:ARG:HD2	1:I:363:VAL:HG11	1.84	0.59
2:R:30:ILE:HG13	2:R:51:TYR:HE2	1.68	0.59
2:R:48:SER:O	2:R:62:ARG:NH2	2.36	0.59
2:B:52:ASN:OD1	2:B:62:ARG:NH2	2.36	0.59
2:N:48:SER:O	2:N:62:ARG:NH2	2.36	0.58
2:P:103:LYS:NZ	2:P:108:GLU:OE2	2.35	0.58
2:F:117:LEU:HD11	2:F:154:LYS:HB3	1.84	0.58
1:G:27:GLU:OE1	1:G:243:ARG:NH1	2.29	0.58
1:C:367:ASP:OD1	1:C:367:ASP:N	2.37	0.58
1:E:236:SER:O	1:E:243:ARG:NH2	2.37	0.58
1:G:225:THR:HG22	1:G:229:ARG:HH21	1.69	0.58
1:I:271:THR:HB	1:I:377:MET:HB3	1.86	0.58
2:P:325:GLU:OE2	2:P:325:GLU:N	2.30	0.58
2:B:252:LYS:HG3	1:G:100:ALA:HA	1.86	0.58
2:B:330:MET:HE2	2:B:349:VAL:HG22	1.86	0.58
1:G:286:LEU:HD12	1:G:373:ARG:HH21	1.68	0.58
1:K:147:SER:OG	1:K:190:THR:OG1	2.18	0.58
1:K:180:ALA:HB3	1:K:183:GLU:HG3	1.86	0.58
2:N:236:VAL:HG13	2:N:237:THR:HG23	1.86	0.58
2:F:27:GLU:OE1	2:F:241:ARG:NH1	2.31	0.58
1:G:277:SER:OG	1:G:278:ALA:N	2.37	0.58

Continued on next page...

Continued from previous page...

Atom-1	Atom-2	Interatomic distance (Å)	Clash overlap (Å)
2:N:30:ILE:HG13	2:N:51:TYR:HE2	1.69	0.58
1:C:47:ASP:OD1	1:C:48:SER:N	2.35	0.58
1:C:134:GLY:HA3	1:C:165:SER:HB2	1.86	0.58
1:C:381:THR:O	1:C:432:TYR:OH	2.20	0.57
1:C:440:VAL:HG22	1:C:441:GLU:HG3	1.86	0.57
1:A:227:LEU:O	1:A:231:ILE:HG13	2.04	0.57
2:P:12:CYS:HG	2:P:138:SER:HG	1.43	0.57
1:K:225:THR:HG22	1:K:229:ARG:HH21	1.70	0.57
2:R:12:CYS:SG	2:R:138:SER:OG	2.53	0.57
1:A:53:PHE:HB3	1:A:61:HIS:HB3	1.86	0.57
1:C:100:ALA:HA	2:P:252:LYS:HG2	1.85	0.57
1:C:119:LEU:HD11	1:C:156:ARG:HB3	1.87	0.57
1:C:234:ILE:HD12	1:C:234:ILE:H	1.68	0.57
1:C:17:GLY:HA2	1:C:20:CYS:HB3	1.84	0.57
1:A:257:THR:HA	2:B:397:TRP:CZ3	2.32	0.57
1:A:260:VAL:HG13	2:B:397:TRP:CH2	2.37	0.57
1:C:240:ALA:O	1:C:356:ASN:ND2	2.38	0.57
2:P:50:TYR:HD2	2:P:241:ARG:HD3	1.70	0.57
1:K:71:GLU:HG3	1:K:73:THR:HG22	1.85	0.57
1:G:271:THR:HB	1:G:377:MET:HB3	1.87	0.56
1:G:77:GLU:N	1:G:77:GLU:OE1	2.39	0.56
1:A:215:ARG:NH2	1:A:299:ALA:O	2.39	0.56
1:I:204:VAL:HG11	1:I:231:ILE:HD12	1.86	0.56
1:C:237:SER:OG	1:C:320:ARG:NH2	2.38	0.56
1:E:277:SER:OG	1:E:278:ALA:N	2.39	0.56
2:N:325:GLU:OE1	2:N:325:GLU:N	2.27	0.56
3:C:501:GTP:O3G	2:P:252:LYS:NZ	2.39	0.56
1:K:338:LYS:HD3	1:K:340:SER:HB3	1.87	0.56
1:E:326:LYS:HG3	2:F:220:PRO:HG2	1.88	0.56
2:F:52:ASN:OD1	2:F:62:ARG:NH2	2.38	0.56
1:I:33:ASP:O	1:I:60:LYS:NZ	2.37	0.56
2:F:325:GLU:OE2	1:K:221:ARG:NH1	2.37	0.56
2:B:284:LEU:O	2:B:362:LYS:NZ	2.35	0.56
2:P:406:MET:H	2:P:406:MET:CE	2.19	0.56
2:B:287:PRO:HB3	2:B:329:GLN:HE22	1.70	0.55
2:R:128:ASP:OD1	2:R:128:ASP:N	2.38	0.55
2:R:170:VAL:HG21	2:R:377:LEU:HD21	1.87	0.55
1:C:277:SER:OG	1:C:278:ALA:N	2.38	0.55
2:F:99:ASN:ND2	3:F:501:GTP:O3G	2.39	0.55
2:F:124:CYS:C	2:F:127:CYS:HB2	2.27	0.55
1:I:71:GLU:HG3	1:I:73:THR:HG22	1.88	0.55

Continued on next page...

Continued from previous page...

Atom-1	Atom-2	Interatomic distance (Å)	Clash overlap (Å)
1:I:202:PHE:HD1	1:I:268:PRO:HG2	1.72	0.55
1:A:328:VAL:O	1:A:332:ILE:HG12	2.07	0.55
2:D:12:CYS:SG	2:D:138:SER:OG	2.59	0.55
1:I:211:ASP:OD2	1:I:304:LYS:NZ	2.31	0.55
2:F:257:MET:SD	2:F:312:THR:OG1	2.55	0.55
1:G:338:LYS:HD3	1:G:340:SER:HB3	1.89	0.55
1:I:56:THR:OG1	1:I:57:GLY:N	2.39	0.55
2:D:282:ARG:NH1	2:D:283:ALA:O	2.40	0.55
1:E:207:GLU:OE2	1:E:304:LYS:NZ	2.29	0.55
2:F:327:ASP:OD2	1:K:177:VAL:HG13	2.06	0.55
1:A:277:SER:OG	1:A:278:ALA:N	2.40	0.54
1:G:3:GLU:HG3	1:G:129:CYS:HB2	1.89	0.54
2:N:74:ASP:OD1	2:N:74:ASP:N	2.40	0.54
1:I:77:GLU:O	1:I:81:GLY:N	2.39	0.54
1:G:245:ASP:OD1	1:G:245:ASP:N	2.40	0.54
1:I:286:LEU:O	1:I:373:ARG:NH2	2.40	0.54
1:A:360:PRO:HG3	1:A:374:ALA:HB2	1.88	0.54
1:G:306:ASP:OD1	1:G:306:ASP:N	2.40	0.54
1:E:367:ASP:OD1	1:E:367:ASP:N	2.41	0.54
2:B:420:SER:OG	2:B:421:GLU:OE2	2.25	0.54
2:D:236:VAL:HG22	2:D:368:ILE:HD11	1.89	0.54
1:A:93:ILE:HG22	1:A:114:ILE:HD11	1.90	0.54
2:B:167:PHE:CE2	2:B:233:MET:HG3	2.43	0.54
2:F:119:VAL:O	2:F:123:GLU:N	2.39	0.54
2:D:335:SER:O	2:D:338:SER:OG	2.26	0.54
1:G:367:ASP:OD1	1:G:367:ASP:N	2.35	0.53
2:R:119:VAL:O	2:R:123:GLU:N	2.41	0.53
1:C:124:LYS:NZ	1:C:128:GLN:OE1	2.41	0.53
1:E:178:SER:HB2	2:R:347:ASN:HD22	1.73	0.53
1:G:191:THR:HA	1:G:194:THR:HG22	1.90	0.53
1:G:360:PRO:HG3	1:G:374:ALA:HB2	1.90	0.53
2:N:245:GLN:HE22	2:N:320:ARG:HH22	1.55	0.53
1:K:71:GLU:HB3	1:K:98:ASP:HB3	1.89	0.53
2:P:345:ILE:HG22	2:P:348:ASN:HB3	1.90	0.53
1:E:134:GLY:HA3	1:E:165:SER:HB2	1.90	0.53
1:K:259:LEU:HD21	1:K:316:CYS:HB2	1.90	0.53
2:R:248:ALA:HA	2:R:252:LYS:HD3	1.90	0.53
1:A:47:ASP:OD1	1:A:48:SER:N	2.39	0.53
2:B:142:GLY:N	3:B:501:GTP:O1G	2.40	0.53
1:I:180:ALA:HB3	1:I:183:GLU:HG3	1.90	0.53
2:P:202:ILE:HG22	2:P:268:PRO:HG3	1.90	0.53

Continued on next page...

Continued from previous page...

Atom-1	Atom-2	Interatomic distance (Å)	Clash overlap (Å)
2:F:30:ILE:HG13	2:F:51:TYR:HE2	1.74	0.53
2:F:287:PRO:HA	2:F:329:GLN:NE2	2.22	0.53
1:A:118:VAL:O	1:A:122:ILE:HG12	2.09	0.53
1:C:220:GLU:OE1	1:C:220:GLU:N	2.29	0.53
1:A:101:ASN:OD1	2:N:252:LYS:NZ	2.34	0.53
1:A:178:SER:HB2	2:N:347:ASN:HD22	1.74	0.53
1:C:214:ARG:HH12	1:C:220:GLU:HA	1.71	0.53
1:I:147:SER:OG	1:I:190:THR:OG1	2.20	0.53
2:F:22:GLU:HA	2:F:81:PHE:HE1	1.73	0.53
1:A:260:VAL:HG21	1:A:266:HIS:HB3	1.91	0.53
1:G:174:ALA:HB1	1:G:207:GLU:HG2	1.91	0.53
1:I:430:LYS:NZ	1:I:431:ASP:OD1	2.40	0.53
2:R:322:SER:OG	2:R:325:GLU:OE1	2.27	0.52
2:B:99:ASN:ND2	3:B:501:GTP:O3G	2.43	0.52
2:N:124:CYS:HG	2:N:159:TYR:HH	1.56	0.52
1:C:246:GLY:HA2	1:C:357:TYR:HD2	1.74	0.52
1:C:324:VAL:HG12	1:C:326:LYS:H	1.74	0.52
2:P:12:CYS:SG	2:P:138:SER:OG	2.56	0.52
1:I:300:ASN:O	1:I:300:ASN:ND2	2.38	0.52
2:P:189:ILE:HA	2:P:192:LEU:HB2	1.91	0.52
1:K:56:THR:OG1	1:K:57:GLY:N	2.43	0.52
2:P:1:MET:N	2:P:3:GLU:OE2	2.41	0.52
1:K:285:GLN:HE21	1:K:290:GLU:HG2	1.74	0.52
2:R:281:TYR:HB3	2:R:282:ARG:HH11	1.74	0.52
1:G:80:THR:HA	1:G:84:ARG:HH12	1.74	0.52
1:K:119:LEU:HD11	1:K:156:ARG:HB3	1.91	0.52
1:C:181:VAL:HG23	2:P:348:ASN:HA	1.91	0.52
1:I:259:LEU:HD11	1:I:316:CYS:HB2	1.92	0.52
1:E:3:GLU:O	1:E:133:GLN:N	2.40	0.52
1:A:9:VAL:HG12	1:A:146:GLY:HA2	1.92	0.52
2:N:325:GLU:HA	2:N:328:GLU:HG2	1.92	0.52
2:P:173:PRO:HB3	2:P:380:ARG:CZ	2.40	0.52
1:A:30:ILE:HG21	1:A:53:PHE:HE2	1.75	0.52
1:K:123:ARG:NH1	1:K:160:ASP:OD2	2.43	0.52
1:C:202:PHE:HD1	1:C:268:PRO:HG2	1.75	0.52
2:D:372:THR:HG21	2:D:426:GLN:HB2	1.91	0.52
2:N:10:GLY:HA2	2:N:143:THR:HG23	1.91	0.51
2:B:347:ASN:ND2	1:G:180:ALA:O	2.44	0.51
2:N:1:MET:N	2:N:3:GLU:OE2	2.37	0.51
1:A:205:ASP:O	1:A:209:ILE:HG12	2.11	0.51
1:A:324:VAL:HB	1:A:327:ASP:OD2	2.11	0.51

Continued on next page...

Continued from previous page...

Atom-1	Atom-2	Interatomic distance (Å)	Clash overlap (Å)
2:B:6:HIS:CE1	2:B:8:GLN:HE21	2.28	0.51
2:B:22:GLU:HA	2:B:81:PHE:HE1	1.75	0.51
2:D:186:THR:HG22	2:D:411:ALA:HB1	1.92	0.51
1:C:172:TYR:CE2	1:C:387:ALA:HB1	2.45	0.51
1:I:306:ASP:OD1	1:I:306:ASP:N	2.43	0.51
2:P:404:ASP:OD1	2:P:404:ASP:N	2.42	0.51
1:E:360:PRO:HG3	1:E:374:ALA:HB2	1.92	0.51
1:E:332:ILE:HD12	1:E:351:PHE:CE2	2.45	0.51
2:B:172:SER:OG	2:B:205:GLU:OE2	2.28	0.51
1:A:297:GLU:HG2	1:A:299:ALA:H	1.76	0.51
2:B:54:ALA:HA	2:D:283:ALA:HB2	1.92	0.51
1:C:101:ASN:OD1	2:P:252:LYS:NZ	2.31	0.51
1:C:334:THR:O	1:C:337:THR:OG1	2.28	0.51
1:A:306:ASP:OD1	1:A:306:ASP:N	2.42	0.50
1:C:188:ILE:HD11	1:C:422:ARG:HA	1.93	0.50
1:C:237:SER:HA	1:C:320:ARG:HH22	1.76	0.50
1:K:202:PHE:HD1	1:K:268:PRO:HG2	1.76	0.50
1:A:220:GLU:OE2	1:A:220:GLU:N	2.32	0.50
2:B:258:VAL:O	1:G:407:TRP:NE1	2.41	0.50
2:N:345:ILE:HG22	2:N:348:ASN:HB3	1.92	0.50
1:I:182:VAL:HG22	1:I:185:TYR:HB2	1.94	0.50
2:R:335:SER:O	2:R:338:SER:OG	2.28	0.50
1:I:27:GLU:OE1	1:I:243:ARG:NH1	2.31	0.50
1:I:155:GLU:OE1	1:I:155:GLU:HA	2.11	0.50
1:K:172:TYR:CE2	1:K:387:ALA:HB1	2.45	0.50
2:B:252:LYS:NZ	3:G:501:GTP:O3G	2.40	0.50
2:F:293:MET:HE3	2:F:367:PHE:HB2	1.92	0.50
1:K:245:ASP:OD1	1:K:245:ASP:N	2.43	0.50
2:D:170:VAL:HG21	2:D:377:LEU:HD21	1.93	0.50
1:I:172:TYR:CE2	1:I:387:ALA:HB1	2.46	0.50
1:A:75:ILE:HA	1:A:78:VAL:HG12	1.94	0.50
1:C:343:PHE:HE2	1:C:350:GLY:HA3	1.76	0.50
1:C:382:THR:HA	1:C:432:TYR:HE2	1.76	0.50
2:N:12:CYS:SG	2:N:138:SER:OG	2.64	0.50
1:I:277:SER:OG	1:I:278:ALA:N	2.44	0.50
1:K:27:GLU:OE1	1:K:243:ARG:NH1	2.31	0.50
1:K:306:ASP:OD1	1:K:306:ASP:N	2.45	0.50
1:K:414:GLU:CD	1:K:416:GLY:H	2.15	0.50
2:R:74:ASP:OD2	2:R:74:ASP:N	2.44	0.50
1:G:215:ARG:NH2	1:G:299:ALA:O	2.45	0.50
1:E:191:THR:HA	1:E:194:THR:HG22	1.94	0.50

Continued on next page...

Continued from previous page...

Atom-1	Atom-2	Interatomic distance (Å)	Clash overlap (Å)
1:A:324:VAL:HG21	2:B:219:THR:HB	1.94	0.50
2:P:287:PRO:HA	2:P:329:GLN:NE2	2.27	0.50
1:K:205:ASP:OD1	1:K:206:ASN:N	2.45	0.50
1:C:371:VAL:HG22	1:C:373:ARG:H	1.77	0.49
2:P:173:PRO:HB3	2:P:380:ARG:NH1	2.27	0.49
2:F:273:LEU:HD12	2:F:298:ASN:HD21	1.76	0.49
1:K:220:GLU:OE2	1:K:220:GLU:N	2.45	0.49
1:K:360:PRO:HG3	1:K:374:ALA:HB2	1.94	0.49
1:A:235:VAL:O	1:A:238:ILE:HG22	2.13	0.49
2:N:130:LEU:HB3	2:N:162:ARG:NH1	2.27	0.49
2:D:293:MET:SD	2:D:367:PHE:HB2	2.53	0.49
1:A:381:THR:OG1	1:A:382:THR:N	2.45	0.49
2:B:371:SER:OG	2:B:372:THR:N	2.45	0.49
1:G:172:TYR:CE1	1:G:387:ALA:HB1	2.48	0.49
1:I:341:ILE:HD12	1:I:341:ILE:H	1.77	0.49
1:K:105:ARG:O	1:K:110:ILE:HG22	2.12	0.49
2:N:392:LYS:HA	2:N:395:LEU:HD21	1.93	0.49
1:I:360:PRO:HG3	1:I:374:ALA:HB2	1.94	0.49
1:E:341:ILE:HD12	1:E:341:ILE:H	1.77	0.49
2:B:278:SER:O	2:B:278:SER:OG	2.30	0.49
2:P:130:LEU:HB3	2:P:162:ARG:NH1	2.28	0.49
1:A:211:ASP:OD2	1:A:304:LYS:NZ	2.36	0.49
2:D:198:GLU:HA	2:D:264:HIS:HB2	1.93	0.49
1:E:147:SER:OG	1:E:190:THR:OG1	2.17	0.49
1:A:100:ALA:HA	2:N:252:LYS:HG2	1.93	0.49
2:B:27:GLU:OE1	2:B:241:ARG:NH1	2.44	0.49
1:I:105:ARG:O	1:I:110:ILE:HG22	2.13	0.49
1:E:345:ASP:OD1	1:E:346:TRP:N	2.46	0.49
1:K:241:SER:OG	1:K:250:VAL:O	2.16	0.49
2:R:130:LEU:HB3	2:R:162:ARG:HE	1.77	0.49
1:C:207:GLU:HA	1:C:210:TYR:CD2	2.47	0.49
2:F:287:PRO:O	2:F:291:GLN:HG2	2.13	0.49
2:B:73:MET:HA	2:B:76:VAL:HG12	1.95	0.49
1:G:147:SER:OG	1:G:190:THR:OG1	2.18	0.49
2:P:3:GLU:HB2	2:P:127:CYS:SG	2.52	0.49
2:P:101:TRP:HD1	2:P:403:MET:SD	2.36	0.49
1:E:245:ASP:OD1	1:E:245:ASP:N	2.44	0.49
2:F:236:VAL:HG22	2:F:368:ILE:HD11	1.93	0.49
2:R:173:PRO:HB3	2:R:380:ARG:CZ	2.42	0.49
1:A:27:GLU:OE2	1:A:236:SER:OG	2.27	0.49
2:B:375:GLN:NE2	2:B:423:GLN:HB2	2.27	0.49

Continued on next page...

Continued from previous page...

Atom-1	Atom-2	Interatomic distance (Å)	Clash overlap (Å)
1:I:255:PHE:HZ	1:I:318:LEU:HD21	1.77	0.49
2:P:206:ALA:HB2	2:P:302:ALA:HB2	1.94	0.49
2:B:287:PRO:CB	2:B:329:GLN:HE22	2.26	0.48
2:D:415:MET:O	2:D:419:VAL:HG12	2.12	0.48
2:F:67:ASP:OD1	2:F:68:LEU:N	2.46	0.48
1:A:3:GLU:O	1:A:133:GLN:N	2.23	0.48
1:I:174:ALA:HB3	1:I:177:VAL:O	2.14	0.48
2:P:416:ASN:HA	2:P:419:VAL:HG12	1.96	0.48
1:A:260:VAL:HG23	1:A:265:ILE:O	2.13	0.48
2:N:306:ARG:HA	2:N:340:TYR:CE1	2.48	0.48
2:D:119:VAL:O	2:D:123:GLU:N	2.45	0.48
1:I:98:ASP:OD1	1:I:100:ALA:N	2.29	0.48
1:E:172:TYR:CE1	1:E:387:ALA:HB1	2.48	0.48
2:F:229:VAL:O	2:F:233:MET:HB2	2.12	0.48
2:F:325:GLU:HA	2:F:328:GLU:HG2	1.94	0.48
1:I:75:ILE:HG13	1:I:94:THR:HG22	1.95	0.48
1:E:98:ASP:OD1	1:E:100:ALA:N	2.42	0.48
1:E:306:ASP:N	1:E:306:ASP:OD1	2.44	0.48
2:F:19:LYS:HB3	2:F:19:LYS:HE3	1.54	0.48
1:K:251:ASP:OD2	1:K:251:ASP:N	2.46	0.48
2:R:325:GLU:HA	2:R:328:GLU:HB3	1.95	0.48
2:N:132:GLY:HA2	2:N:162:ARG:HG3	1.94	0.48
2:D:245:GLN:N	2:D:245:GLN:OE1	2.46	0.48
2:D:320:ARG:HG2	2:D:320:ARG:HH11	1.79	0.48
1:E:119:LEU:HD11	1:E:156:ARG:HB3	1.96	0.48
2:R:72:THR:O	2:R:75:SER:OG	2.32	0.48
2:N:72:THR:O	2:N:75:SER:OG	2.30	0.48
2:F:311:LEU:HD23	2:F:342:VAL:HG11	1.95	0.48
2:B:238:THR:HA	2:B:241:ARG:HB2	1.95	0.48
1:I:69:ASP:OD1	1:I:70:LEU:N	2.45	0.48
1:K:234:ILE:HD13	1:K:270:ALA:HB1	1.95	0.48
2:B:124:CYS:SG	2:B:159:TYR:OH	2.60	0.48
1:G:53:PHE:HB3	1:G:61:HIS:HB3	1.94	0.48
2:P:236:VAL:HG22	2:P:368:ILE:HD11	1.95	0.48
2:F:91:ILE:HD11	2:F:119:VAL:HG21	1.96	0.48
2:N:169:VAL:HG22	2:N:202:ILE:HD11	1.96	0.48
2:N:287:PRO:HD3	2:N:329:GLN:HE22	1.79	0.48
1:C:245:ASP:OD1	1:C:245:ASP:N	2.45	0.48
2:D:205:GLU:HA	2:D:208:TYR:HB2	1.96	0.48
2:B:397:TRP:CD1	2:B:397:TRP:N	2.79	0.47
2:P:306:ARG:HA	2:P:340:TYR:HE2	1.79	0.47

Continued on next page...

Continued from previous page...

Atom-1	Atom-2	Interatomic distance (Å)	Clash overlap (Å)
1:E:49:PHE:HB2	1:E:53:PHE:HB2	1.96	0.47
2:D:66:VAL:HA	2:D:91:ILE:O	2.14	0.47
1:I:245:ASP:OD1	1:I:245:ASP:N	2.37	0.47
2:P:170:VAL:HG11	2:P:377:LEU:HD11	1.96	0.47
1:E:301:GLN:OE1	1:E:307:PRO:HD3	2.13	0.47
1:E:329:ASN:HD21	2:F:175:VAL:HG11	1.80	0.47
2:F:278:SER:OG	2:F:278:SER:O	2.31	0.47
2:R:345:ILE:HG22	2:R:348:ASN:HB3	1.96	0.47
1:E:167:LEU:HD11	1:E:252:LEU:HG	1.96	0.47
2:F:73:MET:HA	2:F:76:VAL:HG12	1.95	0.47
1:A:345:ASP:OD1	1:A:346:TRP:N	2.48	0.47
1:G:202:PHE:HD1	1:G:268:PRO:HG2	1.80	0.47
1:C:214:ARG:HE	2:P:324:LYS:HZ2	1.61	0.47
1:I:285:GLN:NE2	1:I:290:GLU:HG2	2.28	0.47
1:A:115:ILE:HA	1:A:118:VAL:HG12	1.96	0.47
1:A:202:PHE:HD1	1:A:268:PRO:HG2	1.79	0.47
1:G:145:THR:O	1:G:149:PHE:HB3	2.13	0.47
2:F:226:ASN:OD1	3:F:501:GTP:N1	2.44	0.47
1:A:332:ILE:HD12	1:A:351:PHE:CE1	2.48	0.47
2:B:91:ILE:HD11	2:B:119:VAL:HG21	1.96	0.47
1:C:172:TYR:HE2	1:C:387:ALA:HB1	1.78	0.47
2:D:142:GLY:N	3:D:501:GTP:O1G	2.32	0.47
1:E:234:ILE:HG21	1:E:270:ALA:HB1	1.96	0.47
1:A:420:GLU:HA	1:A:423:GLU:HG2	1.95	0.47
2:B:156:ARG:HH21	2:B:164:MET:HE3	1.79	0.47
1:C:22:GLU:HA	1:C:83:TYR:HE2	1.79	0.47
1:C:399:TYR:OH	1:C:415:GLU:OE2	2.31	0.47
2:D:130:LEU:HB3	2:D:162:ARG:NH1	2.29	0.47
2:F:69:GLU:HG2	2:F:71:GLY:H	1.79	0.47
1:A:172:TYR:HE2	1:A:387:ALA:HB1	1.80	0.47
2:B:387:ALA:HA	2:B:390:ARG:NH2	2.30	0.47
1:G:69:ASP:OD1	1:G:70:LEU:N	2.47	0.47
2:N:404:ASP:OD1	2:N:404:ASP:N	2.47	0.47
1:C:220:GLU:O	1:C:221:ARG:HD3	2.15	0.47
1:I:220:GLU:O	1:I:221:ARG:HD3	2.14	0.47
1:A:113:GLU:N	1:A:113:GLU:OE1	2.48	0.47
2:B:287:PRO:O	2:B:291:GLN:HG2	2.15	0.47
2:B:325:GLU:OE2	1:G:221:ARG:NH1	2.39	0.47
2:N:91:ILE:HD11	2:N:119:VAL:HG21	1.97	0.47
2:D:68:LEU:HD12	2:D:97:ALA:HB2	1.96	0.47
2:P:200:TYR:HE1	2:P:266:PHE:HD1	1.63	0.47

Continued on next page...

Continued from previous page...

Atom-1	Atom-2	Interatomic distance (Å)	Clash overlap (Å)
1:G:11:GLN:HG3	1:G:74:VAL:HG21	1.97	0.47
1:G:71:GLU:HB2	1:G:98:ASP:HB3	1.97	0.47
1:G:166:LYS:N	1:G:199:ASP:OD2	2.41	0.47
2:B:255:VAL:HG11	1:G:100:ALA:O	2.15	0.46
1:I:17:GLY:HA2	1:I:20:CYS:HB3	1.95	0.46
1:A:20:CYS:HA	1:A:232:SER:HB2	1.97	0.46
2:B:130:LEU:HB3	2:B:162:ARG:NH1	2.31	0.46
2:B:285:THR:HG23	2:B:287:PRO:HG2	1.97	0.46
1:E:440:VAL:HG22	1:E:441:GLU:HG3	1.96	0.46
1:A:208:ALA:O	1:A:212:ILE:HG12	2.15	0.46
1:G:47:ASP:OD1	1:G:48:SER:N	2.38	0.46
1:C:229:ARG:HD2	1:C:363:VAL:HG11	1.97	0.46
1:E:33:ASP:O	1:E:60:LYS:NZ	2.47	0.46
2:F:142:GLY:N	3:F:501:GTP:O1G	2.29	0.46
2:B:73:MET:HG3	2:B:92:PHE:HB3	1.97	0.46
1:C:203:MET:HA	1:C:203:MET:HE3	1.97	0.46
2:D:273:LEU:HD12	2:D:298:ASN:HD21	1.81	0.46
2:P:98:GLY:N	3:P:501:GTP:O2G	2.48	0.46
2:P:100:ASN:HB3	2:P:103:LYS:HB2	1.97	0.46
2:P:289:LEU:HD11	2:P:363:MET:HG3	1.96	0.46
2:F:135:LEU:HD22	2:F:137:HIS:HD2	1.79	0.46
1:A:88:HIS:HB3	1:A:91:GLN:OE1	2.16	0.46
2:D:252:LYS:NZ	3:I:501:GTP:O3G	2.46	0.46
1:G:33:ASP:OD1	1:G:33:ASP:N	2.46	0.46
1:G:238:ILE:HD11	1:G:378:LEU:HD21	1.98	0.46
1:G:241:SER:HA	1:G:356:ASN:HD21	1.81	0.46
1:I:215:ARG:NH2	1:I:299:ALA:O	2.49	0.46
1:E:329:ASN:ND2	2:F:175:VAL:HG11	2.31	0.46
1:C:306:ASP:N	1:C:306:ASP:OD1	2.49	0.46
1:I:1:MET:O	1:I:131:GLY:HA3	2.16	0.46
2:B:57:HIS:O	2:B:57:HIS:ND1	2.44	0.46
2:B:320:ARG:HA	2:B:320:ARG:HD3	1.82	0.46
1:G:341:ILE:HD12	1:G:343:PHE:HE1	1.81	0.46
2:D:379:LYS:HD2	2:D:419:VAL:HG21	1.98	0.46
1:K:145:THR:O	1:K:149:PHE:HB3	2.15	0.46
2:N:98:GLY:N	3:N:501:GTP:O2G	2.49	0.46
1:I:175:PRO:HG3	1:I:390:ARG:NH1	2.31	0.46
2:P:203:ASP:OD1	2:P:204:ASN:N	2.45	0.46
2:P:278:SER:O	2:P:278:SER:OG	2.32	0.46
1:E:300:ASN:O	1:E:300:ASN:ND2	2.41	0.46
2:R:21:TRP:O	2:R:25:SER:OG	2.27	0.46

Continued on next page...

Continued from previous page...

Atom-1	Atom-2	Interatomic distance (Å)	Clash overlap (Å)
2:P:30:ILE:HD13	2:P:51:TYR:CE2	2.51	0.46
2:P:297:LYS:HD2	2:P:297:LYS:O	2.15	0.46
1:K:187:SER:HB3	1:K:391:LEU:HD21	1.98	0.46
2:R:287:PRO:O	2:R:291:GLN:HG2	2.15	0.46
2:D:304:ASP:HB3	2:D:307:HIS:CD2	2.51	0.45
1:I:298:PRO:HG3	1:I:308:ARG:CZ	2.46	0.45
1:K:178:SER:OG	1:K:183:GLU:OE1	2.23	0.45
1:K:285:GLN:OE1	1:K:285:GLN:N	2.42	0.45
2:R:98:GLY:N	3:R:501:GTP:O2G	2.49	0.45
2:D:50:TYR:HD2	2:D:241:ARG:HD3	1.81	0.45
1:E:22:GLU:HA	1:E:83:TYR:HE2	1.82	0.45
2:R:30:ILE:HG13	2:R:51:TYR:CE2	2.49	0.45
1:A:184:PRO:O	1:A:188:ILE:HG22	2.16	0.45
2:P:156:ARG:HG2	2:P:195:ASN:HB2	1.98	0.45
1:K:174:ALA:HB3	1:K:177:VAL:O	2.16	0.45
2:R:210:ILE:HD11	2:R:299:MET:H	1.81	0.45
1:G:155:GLU:OE1	1:G:197:HIS:NE2	2.50	0.45
2:D:27:GLU:OE1	2:D:241:ARG:NH1	2.38	0.45
2:D:65:LEU:HD13	2:D:90:PHE:HE1	1.81	0.45
2:D:285:THR:HG23	2:D:287:PRO:HD2	1.98	0.45
2:P:256:ASN:HD22	2:P:350:LYS:HB2	1.81	0.45
2:R:91:ILE:HD11	2:R:119:VAL:HG21	1.97	0.45
1:A:247:ALA:HB2	1:A:357:TYR:HE1	1.81	0.45
1:G:5:ILE:HG22	1:G:64:ARG:HD2	1.98	0.45
1:C:27:GLU:OE2	1:C:236:SER:OG	2.35	0.45
2:D:257:MET:SD	2:D:312:THR:OG1	2.64	0.45
1:I:88:HIS:HB3	1:I:91:GLN:OE1	2.17	0.45
2:R:167:PHE:CE2	2:R:233:MET:HG3	2.51	0.45
1:G:133:GLN:NE2	1:G:252:LEU:HB2	2.32	0.45
2:N:101:TRP:CD1	2:N:187:LEU:HD13	2.52	0.45
2:N:127:CYS:SG	2:N:128:ASP:N	2.90	0.45
1:I:145:THR:HG22	3:I:501:GTP:O3B	2.17	0.45
1:K:234:ILE:O	1:K:238:ILE:HG12	2.16	0.45
1:A:255:PHE:CZ	1:A:318:LEU:HD21	2.48	0.45
2:F:124:CYS:SG	2:F:130:LEU:HD13	2.57	0.45
1:G:172:TYR:HE1	1:G:387:ALA:HB1	1.82	0.45
1:E:3:GLU:HB2	1:E:132:LEU:HA	1.99	0.45
1:A:97:GLU:N	1:A:97:GLU:OE1	2.49	0.45
1:A:150:THR:O	1:A:154:MET:HG2	2.17	0.45
1:A:220:GLU:O	1:A:221:ARG:HD3	2.17	0.45
1:A:346:TRP:CD2	2:B:391:ARG:HG2	2.52	0.45

Continued on next page...

Continued from previous page...

Atom-1	Atom-2	Interatomic distance (Å)	Clash overlap (Å)
2:B:245:GLN:OE1	2:B:320:ARG:NH1	2.50	0.45
2:D:67:ASP:OD1	2:D:68:LEU:N	2.49	0.45
1:I:440:VAL:HG12	1:I:441:GLU:HG3	1.98	0.45
2:P:252:LYS:HB3	2:P:252:LYS:HE3	1.83	0.45
1:E:255:PHE:CZ	1:E:318:LEU:HD21	2.52	0.45
1:K:255:PHE:HZ	1:K:318:LEU:HD21	1.82	0.45
2:R:278:SER:O	2:R:278:SER:OG	2.31	0.45
2:B:12:CYS:SG	2:B:13:GLY:N	2.90	0.44
2:D:324:LYS:HE2	1:I:214:ARG:HD3	1.99	0.44
1:E:371:VAL:HG22	1:E:373:ARG:H	1.81	0.44
1:K:327:ASP:OD1	1:K:327:ASP:N	2.49	0.44
2:B:66:VAL:HA	2:B:91:ILE:O	2.17	0.44
2:B:248:ALA:HA	2:B:252:LYS:HD3	1.98	0.44
2:B:282:ARG:HA	2:B:282:ARG:HD2	1.81	0.44
1:G:163:LYS:HD3	1:G:163:LYS:HA	1.73	0.44
1:C:145:THR:O	1:C:149:PHE:HB3	2.17	0.44
2:D:287:PRO:HA	2:D:329:GLN:NE2	2.30	0.44
1:E:240:ALA:O	1:E:356:ASN:ND2	2.49	0.44
1:A:265:ILE:HG23	1:A:432:TYR:CZ	2.52	0.44
2:B:27:GLU:OE2	2:B:234:SER:OG	2.35	0.44
2:N:135:LEU:HD13	2:N:152:ILE:HD11	1.98	0.44
2:D:296:ALA:H	2:D:306:ARG:HH21	1.65	0.44
1:I:246:GLY:HA2	1:I:357:TYR:HD2	1.82	0.44
1:I:265:ILE:HG22	1:I:380:ASN:HD21	1.82	0.44
2:R:12:CYS:SG	2:R:13:GLY:N	2.89	0.44
2:N:3:GLU:HB2	2:N:127:CYS:SG	2.57	0.44
1:K:47:ASP:OD1	1:K:48:SER:N	2.38	0.44
2:R:67:ASP:OD1	2:R:68:LEU:N	2.50	0.44
2:R:121:ARG:O	2:R:125:GLU:HG2	2.17	0.44
1:G:277:SER:OG	1:G:279:GLU:OE1	2.25	0.44
1:C:345:ASP:OD1	1:C:346:TRP:N	2.50	0.44
1:E:204:VAL:HG21	1:E:231:ILE:HD13	1.99	0.44
2:F:32:PRO:HG3	2:F:81:PHE:HE2	1.83	0.44
1:G:234:ILE:HG23	1:G:376:CYS:SG	2.57	0.44
1:C:341:ILE:HD11	1:C:343:PHE:HE1	1.82	0.44
2:D:282:ARG:HH11	2:D:283:ALA:H	1.65	0.44
2:R:124:CYS:HB2	2:R:127:CYS:HB2	1.45	0.44
2:D:2:ARG:HE	2:D:46:ARG:HH22	1.64	0.44
2:D:6:HIS:CE1	2:D:8:GLN:HE21	2.35	0.44
2:D:173:PRO:HB3	2:D:380:ARG:NE	2.33	0.44
1:E:286:LEU:HD11	1:E:371:VAL:HG23	1.99	0.44

Continued on next page...

Continued from previous page...

Atom-1	Atom-2	Interatomic distance (Å)	Clash overlap (Å)
1:E:401:LYS:HD3	2:R:344:TRP:CD2	2.53	0.44
1:K:286:LEU:O	1:K:373:ARG:NH2	2.50	0.44
2:R:285:THR:N	2:R:288:GLU:OE2	2.48	0.44
2:B:117:LEU:HD11	2:B:154:LYS:HB3	2.00	0.44
1:G:251:ASP:OD1	1:G:253:THR:N	2.51	0.44
2:N:304:ASP:HB3	2:N:307:HIS:CD2	2.53	0.44
2:D:350:LYS:HA	1:I:179:THR:O	2.17	0.44
1:I:47:ASP:OD1	1:I:48:SER:N	2.40	0.44
2:P:121:ARG:O	2:P:125:GLU:HG2	2.18	0.44
1:E:168:GLU:N	1:E:168:GLU:OE1	2.51	0.44
1:E:251:ASP:N	1:E:254:ASN:OD1	2.41	0.44
1:E:286:LEU:HD23	1:E:373:ARG:HH11	1.83	0.44
2:B:382:SER:HB2	2:B:415:MET:HE1	1.99	0.44
1:I:360:PRO:HG2	1:I:371:VAL:HG23	2.00	0.44
1:K:96:LYS:HD2	1:K:96:LYS:HA	1.76	0.44
2:R:276:ARG:HA	2:R:276:ARG:HD3	1.75	0.44
1:A:82:THR:HA	1:A:84:ARG:NH2	2.32	0.43
2:B:236:VAL:HG22	2:B:368:ILE:HD11	1.99	0.43
1:G:121:ARG:HA	1:G:121:ARG:HD2	1.84	0.43
1:G:215:ARG:NH2	1:G:299:ALA:HB1	2.33	0.43
2:N:299:MET:HE1	2:N:305:PRO:HG2	2.00	0.43
1:I:220:GLU:OE1	1:I:220:GLU:N	2.33	0.43
1:E:143:GLY:O	1:E:186:ASN:ND2	2.51	0.43
2:F:30:ILE:HG13	2:F:51:TYR:CE2	2.53	0.43
2:F:211:CYS:SG	2:F:220:PRO:HB3	2.58	0.43
1:A:104:ALA:HA	1:A:413:MET:HE3	2.00	0.43
2:B:68:LEU:HG	2:B:143:THR:OG1	2.18	0.43
2:N:245:GLN:N	2:N:245:GLN:OE1	2.51	0.43
1:C:207:GLU:HA	1:C:210:TYR:CE2	2.53	0.43
1:C:269:LEU:HD22	1:C:303:VAL:HG11	2.00	0.43
2:R:167:PHE:CD2	2:R:233:MET:HG3	2.52	0.43
2:N:278:SER:O	2:N:278:SER:OG	2.36	0.43
1:C:360:PRO:HG2	1:C:371:VAL:HG13	1.99	0.43
2:D:12:CYS:SG	2:D:13:GLY:N	2.92	0.43
1:I:51:THR:HG21	1:I:243:ARG:HG2	2.01	0.43
2:P:200:TYR:CE1	2:P:266:PHE:HD1	2.37	0.43
1:E:97:GLU:N	1:E:97:GLU:OE1	2.51	0.43
2:B:285:THR:OG1	2:B:287:PRO:HD2	2.18	0.43
1:G:253:THR:O	1:G:257:THR:HG22	2.18	0.43
2:N:198:GLU:OE2	2:N:200:TYR:OH	2.27	0.43
1:E:172:TYR:N	1:E:204:VAL:O	2.50	0.43

Continued on next page...

Continued from previous page...

Atom-1	Atom-2	Interatomic distance (Å)	Clash overlap (Å)
2:F:167:PHE:CD2	2:F:233:MET:HG3	2.54	0.43
2:R:77:ARG:HH22	2:R:92:PHE:HE1	1.65	0.43
1:A:49:PHE:O	1:A:53:PHE:N	2.49	0.43
1:G:3:GLU:O	1:G:133:GLN:N	2.37	0.43
1:G:242:LEU:HD11	1:G:252:LEU:HD13	1.99	0.43
2:P:12:CYS:SG	2:P:13:GLY:N	2.91	0.43
1:E:202:PHE:HD1	1:E:268:PRO:HG2	1.82	0.43
2:B:286:VAL:N	2:B:287:PRO:HD2	2.34	0.43
1:G:105:ARG:O	1:G:110:ILE:HG22	2.18	0.43
1:C:31:GLN:CD	1:C:32:PRO:HD2	2.39	0.43
1:C:236:SER:O	1:C:243:ARG:NH2	2.50	0.43
1:I:234:ILE:O	1:I:238:ILE:HG12	2.18	0.43
2:P:240:LEU:HB3	2:P:249:ASP:OD1	2.18	0.43
1:E:101:ASN:OD1	2:R:252:LYS:NZ	2.38	0.43
2:R:392:LYS:HG3	2:R:395:LEU:HD22	2.01	0.43
1:A:42:HIS:CE1	1:A:47:ASP:HA	2.54	0.43
2:B:225:LEU:O	2:B:229:VAL:HG23	2.18	0.43
1:C:100:ALA:O	2:P:255:VAL:HG11	2.19	0.43
2:D:206:ALA:HB2	2:D:302:ALA:HB2	1.99	0.43
1:A:276:ILE:HD11	1:A:281:ALA:HA	2.00	0.43
1:G:234:ILE:HG21	1:G:270:ALA:HB1	2.01	0.43
2:D:252:LYS:HG2	1:I:100:ALA:HA	2.00	0.43
2:D:346:PRO:HD2	1:I:398:MET:HG2	2.01	0.43
2:P:306:ARG:HA	2:P:340:TYR:CE2	2.54	0.43
2:P:330:MET:HE2	2:P:349:VAL:HG11	2.01	0.43
2:R:359:ARG:HA	2:R:359:ARG:HD3	1.81	0.43
2:R:372:THR:HG21	2:R:426:GLN:HB3	2.00	0.43
2:B:304:ASP:HB3	2:B:307:HIS:CE1	2.54	0.43
1:G:220:GLU:O	1:G:221:ARG:HD3	2.18	0.43
2:N:3:GLU:HG3	2:N:49:VAL:HA	2.00	0.43
2:N:359:ARG:HA	2:N:359:ARG:HD3	1.84	0.43
1:C:343:PHE:CE2	1:C:350:GLY:HA3	2.53	0.43
1:I:129:CYS:SG	1:I:132:LEU:HB2	2.59	0.43
1:I:187:SER:HB3	1:I:391:LEU:HD21	2.00	0.43
2:P:66:VAL:HA	2:P:91:ILE:O	2.19	0.43
2:P:287:PRO:HA	2:P:329:GLN:CD	2.38	0.43
2:R:100:ASN:ND2	2:R:103:LYS:HG3	2.33	0.43
1:A:163:LYS:HA	1:A:163:LYS:HD3	1.73	0.43
1:A:367:ASP:OD1	1:A:367:ASP:N	2.41	0.43
2:B:20:PHE:HA	2:B:230:SER:HB2	2.01	0.43
2:N:261:PRO:O	2:N:264:HIS:ND1	2.52	0.43

Continued on next page...

Continued from previous page...

Atom-1	Atom-2	Interatomic distance (Å)	Clash overlap (Å)
2:N:379:LYS:HA	2:N:379:LYS:HE2	2.00	0.43
1:C:56:THR:HG22	1:C:60:LYS:O	2.19	0.43
2:D:255:VAL:HG11	1:I:100:ALA:O	2.18	0.43
1:E:172:TYR:CD2	1:E:173:PRO:HD2	2.54	0.43
2:B:31:ASP:OD2	2:B:32:PRO:HD2	2.19	0.42
1:C:326:LYS:HD2	2:D:220:PRO:HD2	2.01	0.42
1:C:338:LYS:HD3	1:C:340:SER:HB2	2.01	0.42
2:D:165:ASN:OD1	2:D:198:GLU:HG2	2.18	0.42
1:I:168:GLU:OE2	1:I:198:SER:HB2	2.19	0.42
1:I:177:VAL:HB	1:I:207:GLU:HB3	2.01	0.42
1:E:172:TYR:HE1	1:E:387:ALA:HB1	1.84	0.42
1:K:129:CYS:SG	1:K:132:LEU:HB2	2.59	0.42
1:C:11:GLN:HG2	3:C:501:GTP:O2B	2.18	0.42
1:C:129:CYS:SG	1:C:132:LEU:HB2	2.58	0.42
1:C:286:LEU:O	1:C:373:ARG:NH2	2.38	0.42
1:I:122:ILE:HD13	1:I:122:ILE:HA	1.86	0.42
1:E:96:LYS:HD2	1:E:96:LYS:HA	1.84	0.42
2:N:66:VAL:HA	2:N:91:ILE:O	2.18	0.42
1:C:105:ARG:O	1:C:110:ILE:HG22	2.20	0.42
2:D:126:ASN:OD1	2:D:126:ASN:N	2.48	0.42
2:P:4:ILE:HD12	2:P:4:ILE:HA	1.82	0.42
1:E:2:ARG:HG2	1:E:133:GLN:NE2	2.35	0.42
1:K:440:VAL:HG22	1:K:441:GLU:HG3	2.00	0.42
1:A:287:SER:O	1:A:291:ILE:HG23	2.19	0.42
2:B:39:ASP:OD1	2:B:39:ASP:N	2.52	0.42
2:B:191:GLN:O	2:B:194:GLU:HG2	2.18	0.42
1:C:286:LEU:O	1:C:286:LEU:HD23	2.18	0.42
2:D:52:ASN:HD22	2:D:53:GLU:N	2.17	0.42
2:D:130:LEU:HB3	2:D:162:ARG:HH11	1.85	0.42
2:D:192:LEU:HD23	2:D:192:LEU:HA	1.88	0.42
1:I:5:ILE:HG22	1:I:64:ARG:HD3	2.02	0.42
2:P:127:CYS:SG	2:P:128:ASP:N	2.92	0.42
2:P:282:ARG:HD2	2:P:282:ARG:HA	1.72	0.42
2:P:320:ARG:HA	2:P:320:ARG:HD3	1.77	0.42
1:E:202:PHE:CD1	1:E:268:PRO:HG2	2.55	0.42
2:F:257:MET:CE	2:F:314:ALA:HB2	2.50	0.42
1:K:2:ARG:HD2	1:K:133:GLN:NE2	2.34	0.42
1:K:104:ALA:HB2	1:K:413:MET:SD	2.60	0.42
2:B:109:GLY:O	2:B:113:VAL:HG22	2.19	0.42
2:B:382:SER:HB2	2:B:415:MET:CE	2.49	0.42
1:C:152:LEU:O	1:C:156:ARG:HG2	2.18	0.42

Continued on next page...

Continued from previous page...

Atom-1	Atom-2	Interatomic distance (Å)	Clash overlap (Å)
2:P:282:ARG:NH2	2:P:288:GLU:OE1	2.52	0.42
1:K:69:ASP:OD1	1:K:70:LEU:N	2.52	0.42
1:A:102:ASN:HB3	1:A:105:ARG:HB2	2.02	0.42
1:A:210:TYR:CE1	1:A:227:LEU:HD11	2.54	0.42
2:B:288:GLU:OE1	2:B:289:LEU:N	2.53	0.42
2:P:101:TRP:CD1	2:P:187:LEU:HD13	2.54	0.42
2:F:248:ALA:HA	2:F:252:LYS:HD2	2.01	0.42
1:A:172:TYR:CD1	1:A:173:PRO:HD2	2.55	0.42
2:B:50:TYR:CE2	2:B:237:THR:HG21	2.54	0.42
2:B:161:ASP:O	2:B:162:ARG:NE	2.46	0.42
1:E:317:LEU:HD11	1:E:351:PHE:CE2	2.54	0.42
2:R:116:VAL:O	2:R:120:VAL:HG12	2.20	0.42
2:R:257:MET:HE2	2:R:314:ALA:HB2	2.01	0.42
2:D:152:ILE:HD13	2:D:152:ILE:HA	1.87	0.42
1:I:3:GLU:HB2	1:I:132:LEU:HA	2.01	0.42
1:G:172:TYR:CD2	1:G:173:PRO:HD2	2.55	0.42
1:C:276:ILE:HD11	1:C:281:ALA:HA	2.00	0.42
1:K:3:GLU:HB2	1:K:132:LEU:HA	2.00	0.42
1:K:144:GLY:N	3:K:501:GTP:O1G	2.37	0.42
2:R:404:ASP:N	2:R:404:ASP:OD1	2.51	0.42
1:A:172:TYR:N	1:A:204:VAL:O	2.48	0.42
1:A:322:ASP:OD1	1:A:322:ASP:O	2.38	0.42
2:B:281:TYR:HD2	2:F:87:PRO:HD3	1.84	0.42
1:G:174:ALA:HB3	1:G:177:VAL:O	2.19	0.42
2:N:19:LYS:HE3	2:N:22:GLU:HG2	2.02	0.42
2:N:51:TYR:CD1	2:N:51:TYR:N	2.87	0.42
2:D:39:ASP:OD1	2:D:39:ASP:N	2.53	0.42
2:D:172:SER:HG	2:D:205:GLU:CD	2.23	0.42
1:G:8:HIS:CD2	1:G:17:GLY:HA3	2.55	0.41
2:N:121:ARG:O	2:N:125:GLU:HG2	2.20	0.41
2:D:105:HIS:CD2	2:D:150:LEU:HB2	2.54	0.41
2:D:205:GLU:HA	2:D:208:TYR:CD2	2.54	0.41
1:I:105:ARG:HG3	1:I:411:GLU:HG2	2.02	0.41
2:P:379:LYS:HD2	2:P:379:LYS:HA	1.81	0.41
1:A:119:LEU:HD11	1:A:156:ARG:HG3	2.02	0.41
1:G:240:ALA:O	1:G:356:ASN:ND2	2.53	0.41
1:I:119:LEU:HD11	1:I:156:ARG:HB3	2.02	0.41
2:P:20:PHE:CE2	2:P:233:MET:HG2	2.55	0.41
1:E:319:TYR:HB3	1:E:323:VAL:HG21	2.01	0.41
1:A:277:SER:OG	1:A:279:GLU:OE1	2.26	0.41
2:N:14:ASN:OD1	2:N:14:ASN:N	2.53	0.41

Continued on next page...

Continued from previous page...

Atom-1	Atom-2	Interatomic distance (Å)	Clash overlap (Å)
2:N:203:ASP:HB3	2:N:206:ALA:HB3	2.03	0.41
1:E:393:HIS:O	1:E:393:HIS:ND1	2.53	0.41
2:F:8:GLN:NE2	2:F:65:LEU:HG	2.36	0.41
2:F:193:VAL:HG23	2:F:194:GLU:OE2	2.20	0.41
1:K:8:HIS:CD2	1:K:17:GLY:HA3	2.55	0.41
1:C:234:ILE:HG21	1:C:270:ALA:HB1	2.02	0.41
2:D:375:GLN:NE2	2:D:423:GLN:HB2	2.35	0.41
1:I:260:VAL:HG13	1:I:266:HIS:HB3	2.01	0.41
1:E:88:HIS:HB3	1:E:91:GLN:NE2	2.35	0.41
1:E:163:LYS:HA	1:E:163:LYS:HD3	1.73	0.41
2:F:173:PRO:HD2	2:F:205:GLU:OE1	2.21	0.41
2:F:375:GLN:NE2	2:F:419:VAL:O	2.48	0.41
1:A:172:TYR:CE2	1:A:387:ALA:HB1	2.55	0.41
1:G:298:PRO:HG3	1:G:308:ARG:CZ	2.51	0.41
1:C:143:GLY:O	1:C:186:ASN:ND2	2.52	0.41
1:E:56:THR:HG22	1:E:60:LYS:O	2.20	0.41
1:K:397:LEU:HD12	1:K:397:LEU:HA	1.94	0.41
2:B:143:THR:HG22	3:B:501:GTP:PG	2.60	0.41
2:B:281:TYR:CD2	2:F:87:PRO:HD3	2.56	0.41
2:N:83:HIS:O	2:N:83:HIS:ND1	2.54	0.41
2:F:350:LYS:HA	1:K:179:THR:O	2.20	0.41
2:R:320:ARG:HD3	2:R:321:MET:N	2.36	0.41
1:A:91:GLN:HE21	1:A:121:ARG:HH21	1.69	0.41
2:N:414:ASN:HA	2:N:417:ASP:HB2	2.03	0.41
1:C:163:LYS:HA	1:C:163:LYS:HD3	1.75	0.41
1:C:172:TYR:CD1	1:C:173:PRO:HD2	2.55	0.41
1:C:178:SER:CB	2:P:347:ASN:HB2	2.49	0.41
1:C:217:LEU:HD21	1:C:367:ASP:HB2	2.03	0.41
2:D:287:PRO:O	2:D:291:GLN:HG2	2.20	0.41
1:I:132:LEU:HD23	1:I:164:LYS:NZ	2.35	0.41
1:I:277:SER:OG	1:I:279:GLU:OE1	2.31	0.41
1:I:424:ASP:HB3	1:I:425:MET:HE3	2.03	0.41
2:F:206:ALA:HB2	2:F:302:ALA:HB2	2.02	0.41
2:R:69:GLU:HG3	2:R:71:GLY:H	1.86	0.41
2:B:207:LEU:HD11	2:B:228:LEU:HD12	2.01	0.41
2:N:330:MET:HG2	2:N:349:VAL:HG11	2.02	0.41
1:C:326:LYS:HD2	2:D:220:PRO:CD	2.50	0.41
2:D:282:ARG:HH11	2:D:283:ALA:N	2.19	0.41
2:F:418:LEU:O	2:F:422:TYR:HB2	2.20	0.41
2:R:350:LYS:NZ	2:R:352:ALA:HB2	2.36	0.41
2:N:43:GLN:H	2:N:43:GLN:HG2	1.70	0.41

Continued on next page...

Continued from previous page...

Atom-1	Atom-2	Interatomic distance (Å)	Clash overlap (Å)
2:N:399:THR:HA	2:N:403:MET:O	2.20	0.41
1:C:288:VAL:HG22	1:C:373:ARG:HD3	2.02	0.41
2:D:257:MET:HB3	2:D:266:PHE:CZ	2.56	0.41
1:I:338:LYS:HG3	1:I:339:ARG:H	1.85	0.41
1:E:286:LEU:HA	1:E:290:GLU:OE2	2.21	0.41
1:E:303:VAL:O	1:E:305:CYS:N	2.53	0.41
2:F:49:VAL:HG11	2:F:241:ARG:HG2	2.03	0.41
2:F:285:THR:HG22	2:F:288:GLU:HG3	2.02	0.41
2:R:215:LEU:O	2:R:215:LEU:HD23	2.21	0.41
1:G:397:LEU:HD12	1:G:397:LEU:HA	1.91	0.41
1:I:172:TYR:N	1:I:204:VAL:O	2.46	0.41
2:F:260:PHE:CZ	2:F:425:TYR:HE2	2.38	0.41
1:A:69:ASP:OD1	1:A:70:LEU:N	2.54	0.40
1:A:105:ARG:HG3	1:A:411:GLU:HG2	2.03	0.40
1:A:263:PRO:HD3	2:B:396:HIS:NE2	2.35	0.40
2:D:375:GLN:HE22	2:D:419:VAL:HG22	1.86	0.40
1:I:52:PHE:HD2	1:I:243:ARG:HD3	1.86	0.40
1:E:328:VAL:O	1:E:332:ILE:HG12	2.22	0.40
2:F:115:SER:O	2:F:119:VAL:HG23	2.21	0.40
1:K:21:TRP:CZ3	1:K:63:PRO:HB3	2.56	0.40
2:R:206:ALA:HB2	2:R:302:ALA:HB2	2.03	0.40
2:B:8:GLN:OE1	2:B:65:LEU:HG	2.21	0.40
2:B:284:LEU:HD23	2:B:284:LEU:HA	1.87	0.40
1:G:17:GLY:HA2	1:G:20:CYS:HB3	2.03	0.40
1:G:327:ASP:OD1	1:G:327:ASP:N	2.53	0.40
1:E:385:ALA:HB1	1:E:429:GLU:OE2	2.21	0.40
2:F:12:CYS:SG	2:F:13:GLY:N	2.94	0.40
1:K:53:PHE:HB3	1:K:61:HIS:HB3	2.03	0.40
2:R:49:VAL:HG21	2:R:240:LEU:HD13	2.03	0.40
2:R:323:MET:O	2:R:326:VAL:HB	2.20	0.40
2:R:378:PHE:HB3	2:R:415:MET:CE	2.51	0.40
1:A:156:ARG:HA	1:A:156:ARG:HD2	1.82	0.40
1:A:188:ILE:HG21	1:A:395:PHE:CD1	2.57	0.40
1:A:320:ARG:HG3	1:A:374:ALA:HB3	2.03	0.40
2:N:30:ILE:HG13	2:N:51:TYR:CE2	2.52	0.40
1:C:60:LYS:HB3	1:C:60:LYS:HE2	1.64	0.40
1:C:108:TYR:HA	1:C:112:LYS:NZ	2.36	0.40
1:C:139:HIS:ND1	1:C:150:THR:HG21	2.37	0.40
1:C:152:LEU:HD12	1:C:152:LEU:HA	1.97	0.40
1:K:121:ARG:HA	1:K:121:ARG:HD2	1.83	0.40
1:G:303:VAL:O	1:G:305:CYS:N	2.52	0.40

Continued on next page...

Continued from previous page...

Atom-1	Atom-2	Interatomic distance (Å)	Clash overlap (Å)
2:N:251:ARG:O	2:N:255:VAL:HG23	2.22	0.40
1:C:20:CYS:SG	1:C:235:VAL:HG11	2.61	0.40
1:C:382:THR:HA	1:C:432:TYR:CE2	2.55	0.40
2:D:320:ARG:HG2	2:D:320:ARG:NH1	2.36	0.40
1:I:145:THR:O	1:I:149:PHE:HB3	2.21	0.40
2:P:304:ASP:OD2	2:P:307:HIS:NE2	2.54	0.40
2:F:105:HIS:CD2	2:F:150:LEU:HB2	2.56	0.40
2:R:66:VAL:HA	2:R:91:ILE:O	2.21	0.40
1:A:28:HIS:NE2	1:A:243:ARG:HD2	2.37	0.40
1:G:80:THR:HA	1:G:84:ARG:NH1	2.36	0.40
1:I:217:LEU:HD23	1:I:217:LEU:O	2.21	0.40
1:I:332:ILE:O	1:I:336:LYS:NZ	2.54	0.40
1:K:277:SER:OG	1:K:279:GLU:OE1	2.25	0.40

There are no symmetry-related clashes.

5.3 Torsion angles ⓘ

5.3.1 Protein backbone ⓘ

In the following table, the Percentiles column shows the percent Ramachandran outliers of the chain as a percentile score with respect to all PDB entries followed by that with respect to all EM entries.

The Analysed column shows the number of residues for which the backbone conformation was analysed, and the total number of residues.

Mol	Chain	Analysed	Favoured	Allowed	Outliers	Percentiles	
1	A	429/453 (95%)	408 (95%)	21 (5%)	0	100	100
1	C	429/453 (95%)	415 (97%)	14 (3%)	0	100	100
1	E	429/453 (95%)	409 (95%)	20 (5%)	0	100	100
1	G	429/453 (95%)	414 (96%)	15 (4%)	0	100	100
1	I	429/453 (95%)	408 (95%)	21 (5%)	0	100	100
1	K	429/453 (95%)	414 (96%)	15 (4%)	0	100	100
2	B	427/456 (94%)	406 (95%)	21 (5%)	0	100	100
2	D	427/456 (94%)	412 (96%)	15 (4%)	0	100	100
2	F	427/456 (94%)	404 (95%)	23 (5%)	0	100	100
2	N	427/456 (94%)	409 (96%)	18 (4%)	0	100	100

Continued on next page...

Continued from previous page...

Mol	Chain	Analysed	Favoured	Allowed	Outliers	Percentiles	
2	P	427/456 (94%)	413 (97%)	14 (3%)	0	100	100
2	R	427/456 (94%)	407 (95%)	20 (5%)	0	100	100
All	All	5136/5454 (94%)	4919 (96%)	217 (4%)	0	100	100

There are no Ramachandran outliers to report.

5.3.2 Protein sidechains ⓘ

In the following table, the Percentiles column shows the percent sidechain outliers of the chain as a percentile score with respect to all PDB entries followed by that with respect to all EM entries.

The Analysed column shows the number of residues for which the sidechain conformation was analysed, and the total number of residues.

Mol	Chain	Analysed	Rotameric	Outliers	Percentiles	
1	A	369/384 (96%)	361 (98%)	8 (2%)	47	66
1	C	369/384 (96%)	360 (98%)	9 (2%)	44	64
1	E	369/384 (96%)	361 (98%)	8 (2%)	47	66
1	G	369/384 (96%)	360 (98%)	9 (2%)	44	64
1	I	369/384 (96%)	360 (98%)	9 (2%)	44	64
1	K	369/384 (96%)	361 (98%)	8 (2%)	47	66
2	B	368/392 (94%)	353 (96%)	15 (4%)	26	49
2	D	368/392 (94%)	354 (96%)	14 (4%)	28	50
2	F	368/392 (94%)	353 (96%)	15 (4%)	26	49
2	N	368/392 (94%)	357 (97%)	11 (3%)	36	57
2	P	368/392 (94%)	359 (98%)	9 (2%)	44	64
2	R	368/392 (94%)	366 (100%)	2 (0%)	86	90
All	All	4422/4656 (95%)	4305 (97%)	117 (3%)	42	61

All (117) residues with a non-rotameric sidechain are listed below:

Mol	Chain	Res	Type
1	A	36	MET
1	A	84	ARG
1	A	280	LYS
1	A	300	ASN

Continued on next page...

Continued from previous page...

Mol	Chain	Res	Type
1	A	308	ARG
1	A	338	LYS
1	A	351	PHE
1	A	432	TYR
2	B	19	LYS
2	B	20	PHE
2	B	83	HIS
2	B	124	CYS
2	B	164	MET
2	B	242	PHE
2	B	288	GLU
2	B	298	ASN
2	B	306	ARG
2	B	328	GLU
2	B	388	MET
2	B	406	MET
2	B	414	ASN
2	B	422	TYR
2	B	425	TYR
1	G	25	CYS
1	G	98	ASP
1	G	176	GLN
1	G	251	ASP
1	G	300	ASN
1	G	308	ARG
1	G	373	ARG
1	G	379	SER
1	G	432	TYR
2	N	14	ASN
2	N	57	HIS
2	N	83	HIS
2	N	165	ASN
2	N	233	MET
2	N	249	ASP
2	N	294	PHE
2	N	300	MET
2	N	306	ARG
2	N	397	TRP
2	N	398	TYR
1	C	49	PHE
1	C	98	ASP
1	C	237	SER

Continued on next page...

Continued from previous page...

Mol	Chain	Res	Type
1	C	251	ASP
1	C	300	ASN
1	C	308	ARG
1	C	316	CYS
1	C	393	HIS
1	C	432	TYR
2	D	19	LYS
2	D	52	ASN
2	D	81	PHE
2	D	83	HIS
2	D	86	ARG
2	D	127	CYS
2	D	164	MET
2	D	198	GLU
2	D	233	MET
2	D	257	MET
2	D	323	MET
2	D	388	MET
2	D	414	ASN
2	D	422	TYR
1	I	25	CYS
1	I	71	GLU
1	I	98	ASP
1	I	198	SER
1	I	206	ASN
1	I	300	ASN
1	I	308	ARG
1	I	373	ARG
1	I	432	TYR
2	P	86	ARG
2	P	198	GLU
2	P	212	PHE
2	P	213	ARG
2	P	276	ARG
2	P	321	MET
2	P	388	MET
2	P	406	MET
2	P	422	TYR
1	E	138	PHE
1	E	205	ASP
1	E	300	ASN
1	E	308	ARG

Continued on next page...

Continued from previous page...

Mol	Chain	Res	Type
1	E	351	PHE
1	E	393	HIS
1	E	430	LYS
1	E	432	TYR
2	F	19	LYS
2	F	20	PHE
2	F	50	TYR
2	F	78	SER
2	F	83	HIS
2	F	92	PHE
2	F	124	CYS
2	F	164	MET
2	F	288	GLU
2	F	306	ARG
2	F	323	MET
2	F	340	TYR
2	F	390	ARG
2	F	406	MET
2	F	422	TYR
1	K	25	CYS
1	K	49	PHE
1	K	71	GLU
1	K	206	ASN
1	K	300	ASN
1	K	308	ARG
1	K	373	ARG
1	K	432	TYR
2	R	323	MET
2	R	422	TYR

Sometimes sidechains can be flipped to improve hydrogen bonding and reduce clashes. All (13) such sidechains are listed below:

Mol	Chain	Res	Type
2	B	6	HIS
2	B	329	GLN
1	G	8	HIS
2	N	298	ASN
2	D	6	HIS
2	D	14	ASN
2	D	52	ASN
2	D	99	ASN
1	E	301	GLN

Continued on next page...

Continued from previous page...

Mol	Chain	Res	Type
2	F	14	ASN
2	F	99	ASN
2	F	347	ASN
1	K	8	HIS

5.3.3 RNA [i](#)

There are no RNA molecules in this entry.

5.4 Non-standard residues in protein, DNA, RNA chains [i](#)

There are no non-standard protein/DNA/RNA residues in this entry.

5.5 Carbohydrates [i](#)

There are no oligosaccharides in this entry.

5.6 Ligand geometry [i](#)

Of 24 ligands modelled in this entry, 12 are monoatomic - leaving 12 for Mogul analysis.

In the following table, the Counts columns list the number of bonds (or angles) for which Mogul statistics could be retrieved, the number of bonds (or angles) that are observed in the model and the number of bonds (or angles) that are defined in the Chemical Component Dictionary. The Link column lists molecule types, if any, to which the group is linked. The Z score for a bond length (or angle) is the number of standard deviations the observed value is removed from the expected value. A bond length (or angle) with $|Z| > 2$ is considered an outlier worth inspection. RMSZ is the root-mean-square of all Z scores of the bond lengths (or angles).

Mol	Type	Chain	Res	Link	Bond lengths			Bond angles		
					Counts	RMSZ	$\# Z > 2$	Counts	RMSZ	$\# Z > 2$
3	GTP	A	501	4	26,34,34	1.14	2 (7%)	32,54,54	1.58	7 (21%)
3	GTP	I	501	4	26,34,34	1.15	2 (7%)	32,54,54	1.63	7 (21%)
3	GTP	N	501	4	26,34,34	1.14	2 (7%)	32,54,54	1.60	7 (21%)
3	GTP	R	501	4	26,34,34	1.14	2 (7%)	32,54,54	1.60	7 (21%)
3	GTP	E	501	4	26,34,34	1.14	2 (7%)	32,54,54	1.63	7 (21%)
3	GTP	F	501	4	26,34,34	1.14	2 (7%)	32,54,54	1.61	7 (21%)
3	GTP	D	501	4	26,34,34	1.14	2 (7%)	32,54,54	1.59	7 (21%)
3	GTP	C	501	4	26,34,34	1.14	2 (7%)	32,54,54	1.60	7 (21%)

Mol	Type	Chain	Res	Link	Bond lengths			Bond angles		
					Counts	RMSZ	# Z > 2	Counts	RMSZ	# Z > 2
3	GTP	G	501	4	26,34,34	1.15	2 (7%)	32,54,54	1.62	7 (21%)
3	GTP	B	501	4	26,34,34	1.14	2 (7%)	32,54,54	1.58	7 (21%)
3	GTP	P	501	4	26,34,34	1.13	2 (7%)	32,54,54	1.59	7 (21%)
3	GTP	K	501	4	26,34,34	1.14	2 (7%)	32,54,54	1.65	7 (21%)

In the following table, the Chirals column lists the number of chiral outliers, the number of chiral centers analysed, the number of these observed in the model and the number defined in the Chemical Component Dictionary. Similar counts are reported in the Torsion and Rings columns. '-' means no outliers of that kind were identified.

Mol	Type	Chain	Res	Link	Chirals	Torsions	Rings
3	GTP	A	501	4	-	7/18/38/38	0/3/3/3
3	GTP	I	501	4	-	6/18/38/38	0/3/3/3
3	GTP	N	501	4	-	7/18/38/38	0/3/3/3
3	GTP	R	501	4	-	7/18/38/38	0/3/3/3
3	GTP	E	501	4	-	7/18/38/38	0/3/3/3
3	GTP	F	501	4	-	5/18/38/38	0/3/3/3
3	GTP	D	501	4	-	5/18/38/38	0/3/3/3
3	GTP	C	501	4	-	6/18/38/38	0/3/3/3
3	GTP	G	501	4	-	5/18/38/38	0/3/3/3
3	GTP	B	501	4	-	4/18/38/38	0/3/3/3
3	GTP	P	501	4	-	6/18/38/38	0/3/3/3
3	GTP	K	501	4	-	7/18/38/38	0/3/3/3

All (24) bond length outliers are listed below:

Mol	Chain	Res	Type	Atoms	Z	Observed(Å)	Ideal(Å)
3	I	501	GTP	C5-C6	-4.05	1.39	1.47
3	F	501	GTP	C5-C6	-4.05	1.39	1.47
3	G	501	GTP	C5-C6	-4.05	1.39	1.47
3	A	501	GTP	C5-C6	-4.05	1.39	1.47
3	K	501	GTP	C5-C6	-4.04	1.39	1.47
3	E	501	GTP	C5-C6	-4.04	1.39	1.47
3	N	501	GTP	C5-C6	-4.04	1.39	1.47
3	B	501	GTP	C5-C6	-4.04	1.39	1.47
3	P	501	GTP	C5-C6	-4.03	1.39	1.47
3	C	501	GTP	C5-C6	-4.03	1.39	1.47
3	D	501	GTP	C5-C6	-4.03	1.39	1.47
3	R	501	GTP	C5-C6	-4.03	1.39	1.47

Continued on next page...

Continued from previous page...

Mol	Chain	Res	Type	Atoms	Z	Observed(Å)	Ideal(Å)
3	N	501	GTP	C2-N3	2.18	1.38	1.33
3	P	501	GTP	C2-N3	2.18	1.38	1.33
3	A	501	GTP	C2-N3	2.18	1.38	1.33
3	R	501	GTP	C2-N3	2.18	1.38	1.33
3	B	501	GTP	C2-N3	2.16	1.38	1.33
3	C	501	GTP	C2-N3	2.16	1.38	1.33
3	E	501	GTP	C2-N3	2.16	1.38	1.33
3	G	501	GTP	C2-N3	2.16	1.38	1.33
3	K	501	GTP	C2-N3	2.16	1.38	1.33
3	D	501	GTP	C2-N3	2.15	1.38	1.33
3	I	501	GTP	C2-N3	2.15	1.38	1.33
3	F	501	GTP	C2-N3	2.14	1.38	1.33

All (84) bond angle outliers are listed below:

Mol	Chain	Res	Type	Atoms	Z	Observed(°)	Ideal(°)
3	K	501	GTP	PA-O3A-PB	-3.98	119.18	132.83
3	R	501	GTP	PB-O3B-PG	-3.94	119.32	132.83
3	N	501	GTP	PB-O3B-PG	-3.89	119.48	132.83
3	P	501	GTP	PB-O3B-PG	-3.86	119.57	132.83
3	I	501	GTP	PA-O3A-PB	-3.81	119.75	132.83
3	E	501	GTP	PB-O3B-PG	-3.75	119.95	132.83
3	G	501	GTP	PA-O3A-PB	-3.72	120.05	132.83
3	E	501	GTP	PA-O3A-PB	-3.71	120.11	132.83
3	B	501	GTP	PB-O3B-PG	-3.65	120.29	132.83
3	F	501	GTP	PB-O3B-PG	-3.64	120.34	132.83
3	D	501	GTP	PB-O3B-PG	-3.64	120.35	132.83
3	K	501	GTP	PB-O3B-PG	-3.63	120.39	132.83
3	A	501	GTP	PB-O3B-PG	-3.62	120.40	132.83
3	C	501	GTP	PA-O3A-PB	-3.61	120.43	132.83
3	C	501	GTP	PB-O3B-PG	-3.53	120.71	132.83
3	F	501	GTP	PA-O3A-PB	-3.51	120.77	132.83
3	I	501	GTP	PB-O3B-PG	-3.51	120.79	132.83
3	G	501	GTP	PB-O3B-PG	-3.38	121.24	132.83
3	G	501	GTP	C5-C6-N1	3.33	119.83	113.95
3	I	501	GTP	C5-C6-N1	3.30	119.78	113.95
3	K	501	GTP	C5-C6-N1	3.29	119.76	113.95
3	B	501	GTP	C5-C6-N1	3.27	119.73	113.95
3	F	501	GTP	C5-C6-N1	3.27	119.72	113.95
3	D	501	GTP	C5-C6-N1	3.27	119.72	113.95
3	C	501	GTP	C5-C6-N1	3.25	119.69	113.95
3	N	501	GTP	C5-C6-N1	3.24	119.68	113.95

Continued on next page...

Continued from previous page...

Mol	Chain	Res	Type	Atoms	Z	Observed(°)	Ideal(°)
3	E	501	GTP	C5-C6-N1	3.24	119.68	113.95
3	D	501	GTP	PA-O3A-PB	-3.24	121.71	132.83
3	A	501	GTP	C5-C6-N1	3.24	119.67	113.95
3	P	501	GTP	C5-C6-N1	3.24	119.67	113.95
3	R	501	GTP	C5-C6-N1	3.23	119.66	113.95
3	K	501	GTP	C3'-C2'-C1'	3.16	105.74	100.98
3	A	501	GTP	PA-O3A-PB	-3.16	121.97	132.83
3	I	501	GTP	C3'-C2'-C1'	3.14	105.71	100.98
3	G	501	GTP	C3'-C2'-C1'	3.13	105.70	100.98
3	E	501	GTP	C3'-C2'-C1'	3.13	105.70	100.98
3	A	501	GTP	C3'-C2'-C1'	3.12	105.67	100.98
3	N	501	GTP	C3'-C2'-C1'	3.11	105.66	100.98
3	R	501	GTP	C3'-C2'-C1'	3.11	105.65	100.98
3	B	501	GTP	C3'-C2'-C1'	3.09	105.62	100.98
3	C	501	GTP	C3'-C2'-C1'	3.07	105.61	100.98
3	P	501	GTP	C3'-C2'-C1'	3.07	105.60	100.98
3	D	501	GTP	C8-N7-C5	3.03	108.76	102.99
3	E	501	GTP	C8-N7-C5	3.02	108.74	102.99
3	C	501	GTP	C8-N7-C5	3.02	108.74	102.99
3	K	501	GTP	C8-N7-C5	3.01	108.73	102.99
3	F	501	GTP	C8-N7-C5	3.01	108.73	102.99
3	I	501	GTP	C8-N7-C5	3.01	108.72	102.99
3	B	501	GTP	C8-N7-C5	3.01	108.72	102.99
3	G	501	GTP	C2-N1-C6	-3.00	119.57	125.10
3	A	501	GTP	C8-N7-C5	3.00	108.71	102.99
3	R	501	GTP	C8-N7-C5	3.00	108.71	102.99
3	F	501	GTP	C3'-C2'-C1'	3.00	105.50	100.98
3	G	501	GTP	C8-N7-C5	3.00	108.70	102.99
3	N	501	GTP	C8-N7-C5	2.99	108.69	102.99
3	P	501	GTP	C8-N7-C5	2.99	108.68	102.99
3	D	501	GTP	C3'-C2'-C1'	2.99	105.47	100.98
3	I	501	GTP	C2-N1-C6	-2.97	119.63	125.10
3	P	501	GTP	PA-O3A-PB	-2.96	122.67	132.83
3	K	501	GTP	C2-N1-C6	-2.96	119.65	125.10
3	B	501	GTP	C2-N1-C6	-2.94	119.68	125.10
3	N	501	GTP	C2-N1-C6	-2.93	119.70	125.10
3	R	501	GTP	PA-O3A-PB	-2.93	122.78	132.83
3	D	501	GTP	C2-N1-C6	-2.92	119.71	125.10
3	A	501	GTP	C2-N1-C6	-2.92	119.71	125.10
3	C	501	GTP	C2-N1-C6	-2.92	119.72	125.10
3	E	501	GTP	C2-N1-C6	-2.92	119.72	125.10
3	P	501	GTP	C2-N1-C6	-2.92	119.73	125.10

Continued on next page...

Continued from previous page...

Mol	Chain	Res	Type	Atoms	Z	Observed(°)	Ideal(°)
3	R	501	GTP	C2-N1-C6	-2.91	119.75	125.10
3	F	501	GTP	C2-N1-C6	-2.88	119.79	125.10
3	N	501	GTP	PA-O3A-PB	-2.86	123.03	132.83
3	B	501	GTP	PA-O3A-PB	-2.83	123.10	132.83
3	P	501	GTP	O6-C6-C5	-2.15	120.17	124.37
3	N	501	GTP	O6-C6-C5	-2.14	120.19	124.37
3	R	501	GTP	O6-C6-C5	-2.12	120.22	124.37
3	G	501	GTP	O6-C6-C5	-2.12	120.24	124.37
3	A	501	GTP	O6-C6-C5	-2.11	120.26	124.37
3	B	501	GTP	O6-C6-C5	-2.10	120.26	124.37
3	I	501	GTP	O6-C6-C5	-2.10	120.27	124.37
3	E	501	GTP	O6-C6-C5	-2.10	120.28	124.37
3	K	501	GTP	O6-C6-C5	-2.09	120.28	124.37
3	D	501	GTP	O6-C6-C5	-2.09	120.29	124.37
3	C	501	GTP	O6-C6-C5	-2.09	120.30	124.37
3	F	501	GTP	O6-C6-C5	-2.07	120.33	124.37

There are no chirality outliers.

All (72) torsion outliers are listed below:

Mol	Chain	Res	Type	Atoms
3	A	501	GTP	C5'-O5'-PA-O1A
3	N	501	GTP	C5'-O5'-PA-O1A
3	N	501	GTP	C5'-O5'-PA-O2A
3	N	501	GTP	C3'-C4'-C5'-O5'
3	D	501	GTP	C3'-C4'-C5'-O5'
3	I	501	GTP	C5'-O5'-PA-O1A
3	P	501	GTP	C5'-O5'-PA-O1A
3	P	501	GTP	C5'-O5'-PA-O2A
3	P	501	GTP	C3'-C4'-C5'-O5'
3	E	501	GTP	C5'-O5'-PA-O1A
3	E	501	GTP	C5'-O5'-PA-O2A
3	F	501	GTP	C3'-C4'-C5'-O5'
3	K	501	GTP	C5'-O5'-PA-O1A
3	R	501	GTP	C5'-O5'-PA-O1A
3	R	501	GTP	C5'-O5'-PA-O2A
3	R	501	GTP	C3'-C4'-C5'-O5'
3	B	501	GTP	C3'-C4'-C5'-O5'
3	N	501	GTP	O4'-C4'-C5'-O5'
3	P	501	GTP	O4'-C4'-C5'-O5'
3	E	501	GTP	C3'-C4'-C5'-O5'
3	R	501	GTP	O4'-C4'-C5'-O5'

Continued on next page...

Continued from previous page...

Mol	Chain	Res	Type	Atoms
3	G	501	GTP	C3'-C4'-C5'-O5'
3	D	501	GTP	O4'-C4'-C5'-O5'
3	B	501	GTP	O4'-C4'-C5'-O5'
3	C	501	GTP	C3'-C4'-C5'-O5'
3	F	501	GTP	O4'-C4'-C5'-O5'
3	I	501	GTP	C3'-C4'-C5'-O5'
3	E	501	GTP	O4'-C4'-C5'-O5'
3	K	501	GTP	C3'-C4'-C5'-O5'
3	C	501	GTP	C4'-C5'-O5'-PA
3	K	501	GTP	C4'-C5'-O5'-PA
3	A	501	GTP	C5'-O5'-PA-O3A
3	I	501	GTP	C5'-O5'-PA-O3A
3	P	501	GTP	C5'-O5'-PA-O3A
3	E	501	GTP	C5'-O5'-PA-O3A
3	K	501	GTP	C5'-O5'-PA-O3A
3	B	501	GTP	PA-O3A-PB-O2B
3	G	501	GTP	PA-O3A-PB-O2B
3	N	501	GTP	PB-O3A-PA-O1A
3	C	501	GTP	PA-O3A-PB-O2B
3	E	501	GTP	C4'-C5'-O5'-PA
3	A	501	GTP	C5'-O5'-PA-O2A
3	C	501	GTP	C5'-O5'-PA-O2A
3	I	501	GTP	C5'-O5'-PA-O2A
3	F	501	GTP	C5'-O5'-PA-O2A
3	K	501	GTP	C5'-O5'-PA-O2A
3	A	501	GTP	C3'-C4'-C5'-O5'
3	G	501	GTP	O4'-C4'-C5'-O5'
3	G	501	GTP	C4'-C5'-O5'-PA
3	I	501	GTP	PA-O3A-PB-O2B
3	K	501	GTP	PA-O3A-PB-O2B
3	N	501	GTP	C4'-C5'-O5'-PA
3	I	501	GTP	C4'-C5'-O5'-PA
3	P	501	GTP	C4'-C5'-O5'-PA
3	R	501	GTP	C4'-C5'-O5'-PA
3	F	501	GTP	C4'-C5'-O5'-PA
3	D	501	GTP	PA-O3A-PB-O2B
3	R	501	GTP	PB-O3A-PA-O1A
3	C	501	GTP	O4'-C4'-C5'-O5'
3	N	501	GTP	C5'-O5'-PA-O3A
3	C	501	GTP	C5'-O5'-PA-O3A
3	F	501	GTP	C5'-O5'-PA-O3A
3	R	501	GTP	C5'-O5'-PA-O3A

Continued on next page...

Continued from previous page...

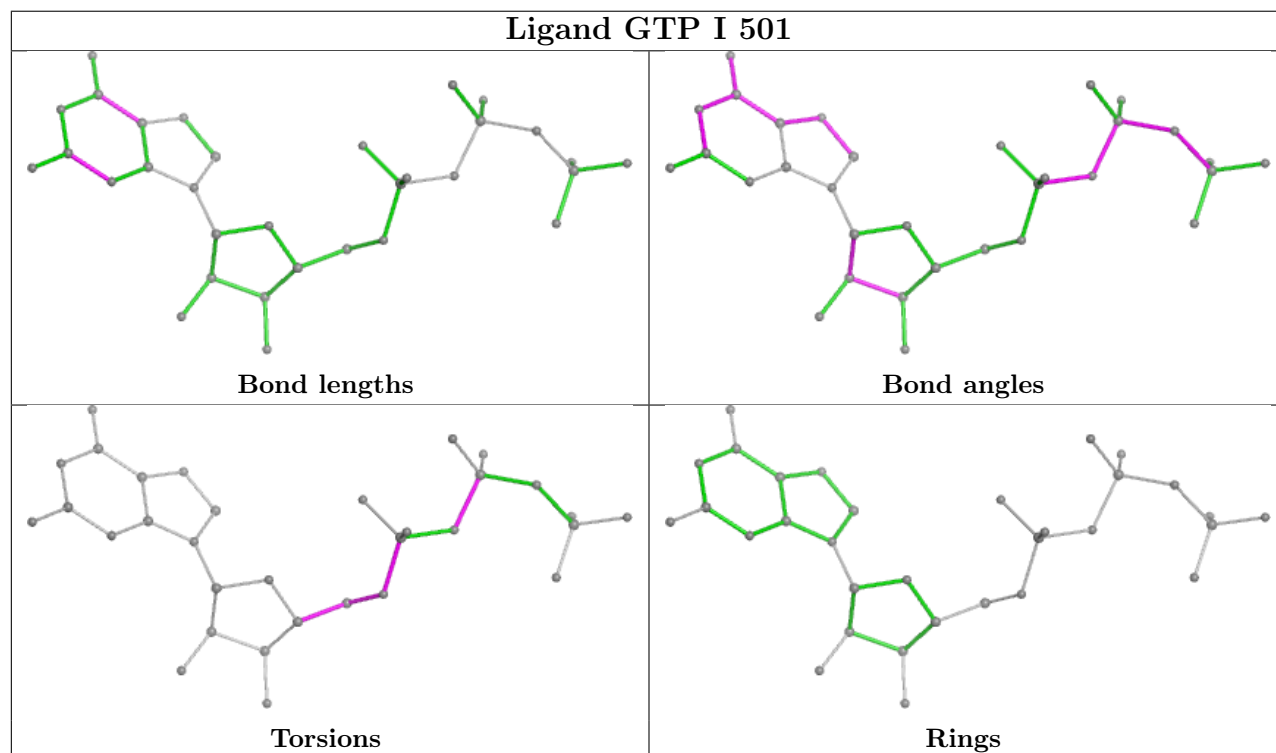
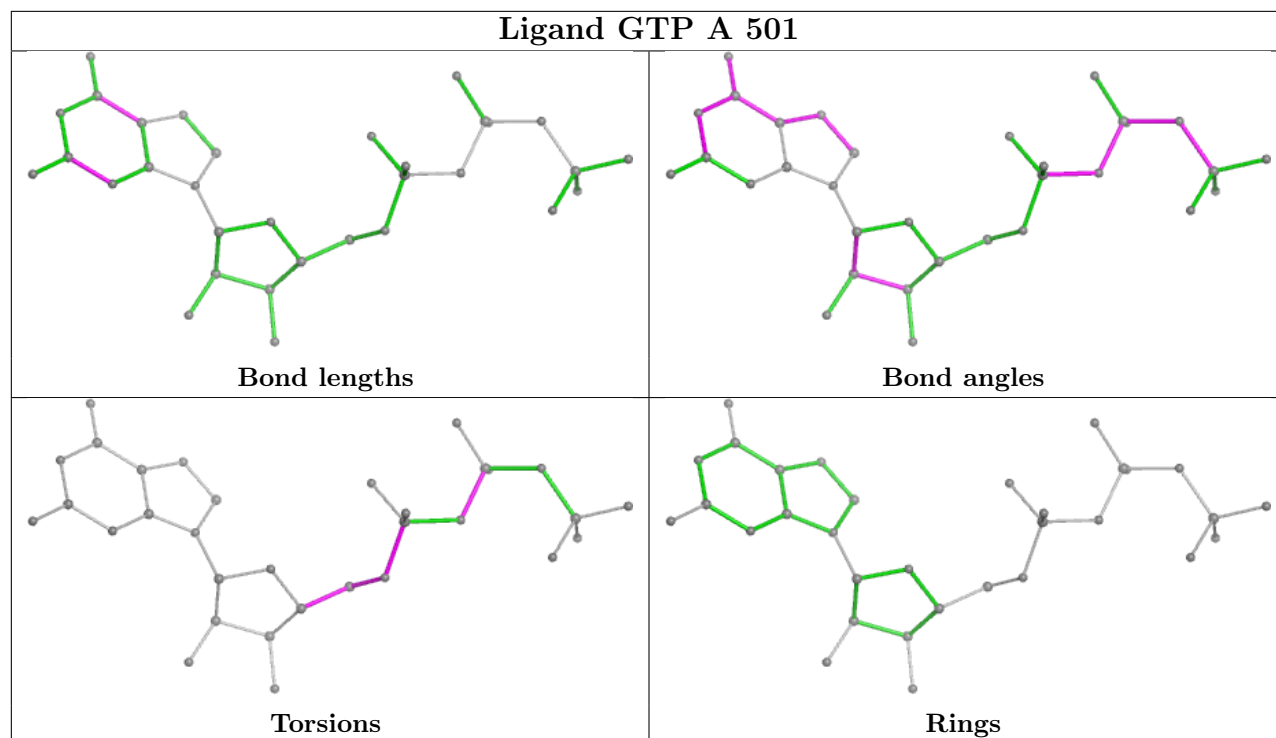
Mol	Chain	Res	Type	Atoms
3	A	501	GTP	C4'-C5'-O5'-PA
3	A	501	GTP	PA-O3A-PB-O1B
3	A	501	GTP	PA-O3A-PB-O2B
3	B	501	GTP	PA-O3A-PB-O1B
3	D	501	GTP	PA-O3A-PB-O1B
3	E	501	GTP	PA-O3A-PB-O2B
3	K	501	GTP	PA-O3A-PB-O1B
3	G	501	GTP	C5'-O5'-PA-O2A
3	D	501	GTP	C4'-C5'-O5'-PA

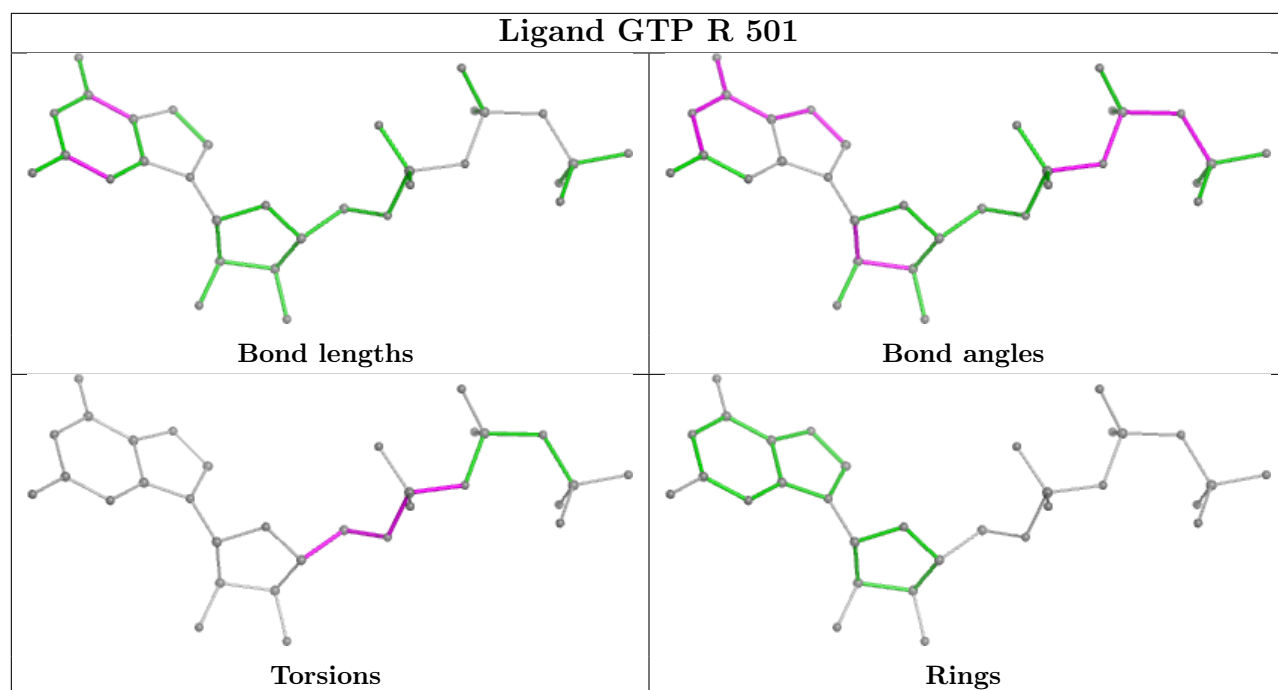
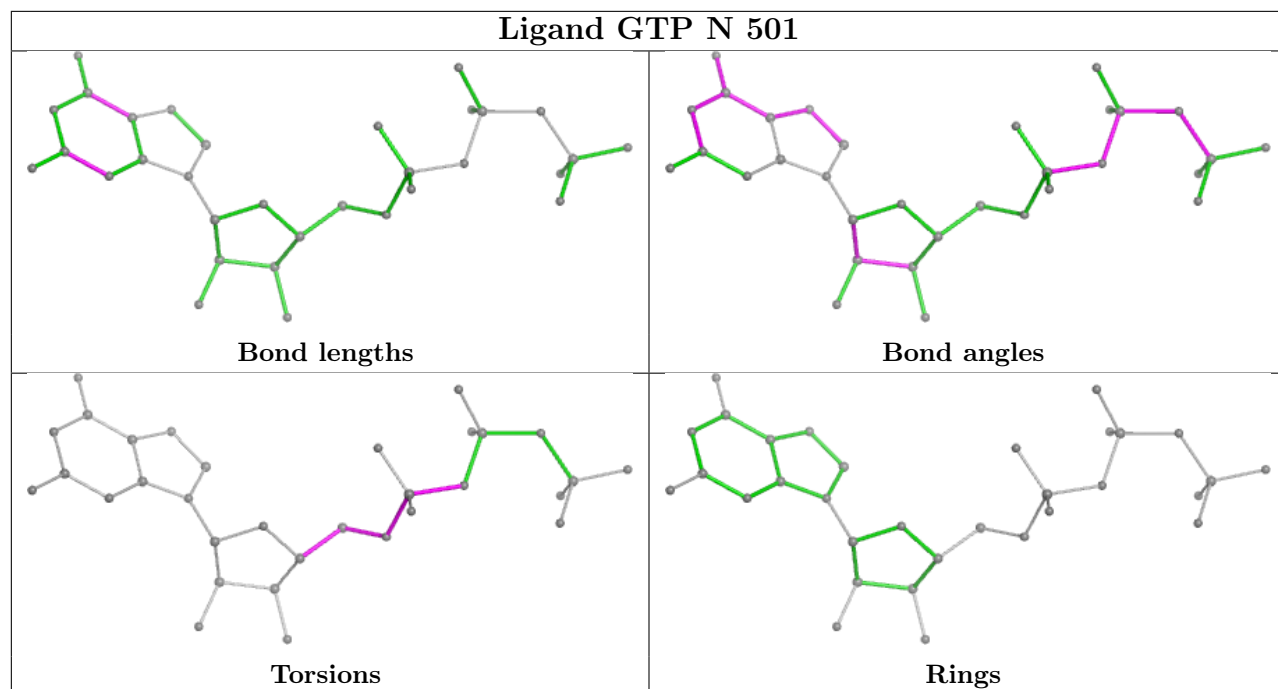
There are no ring outliers.

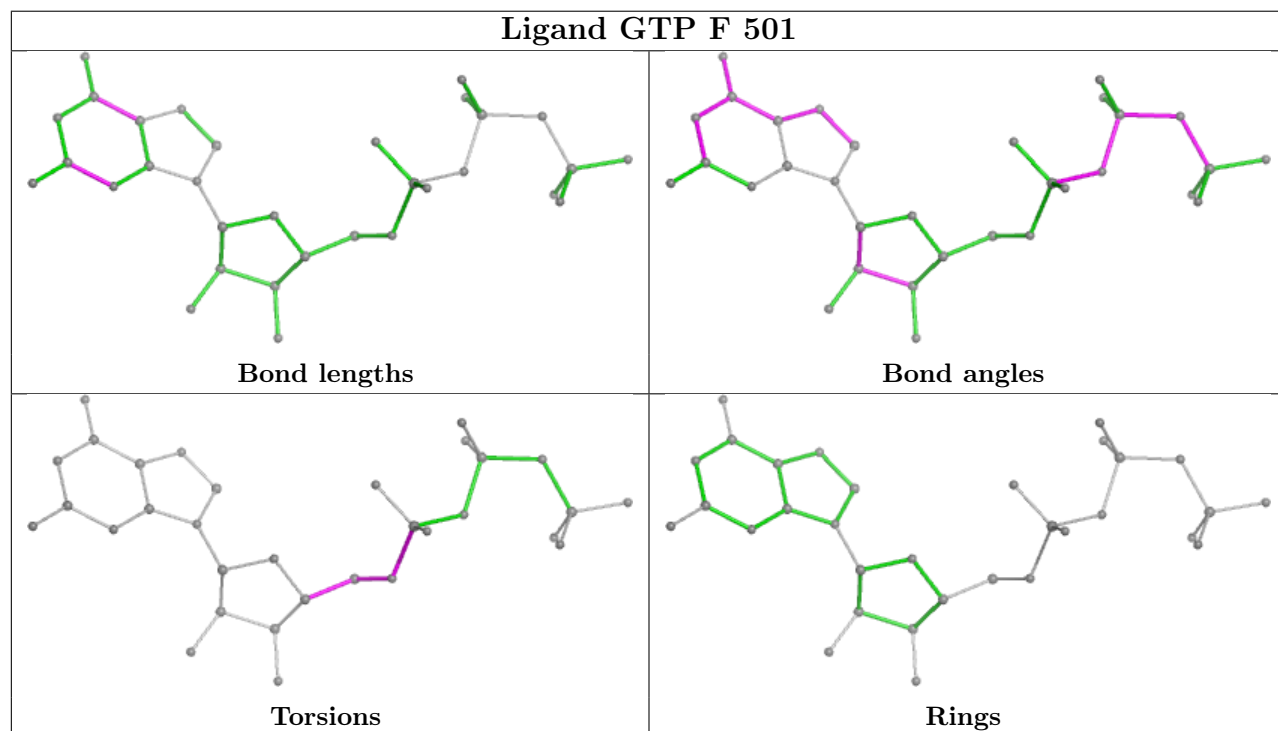
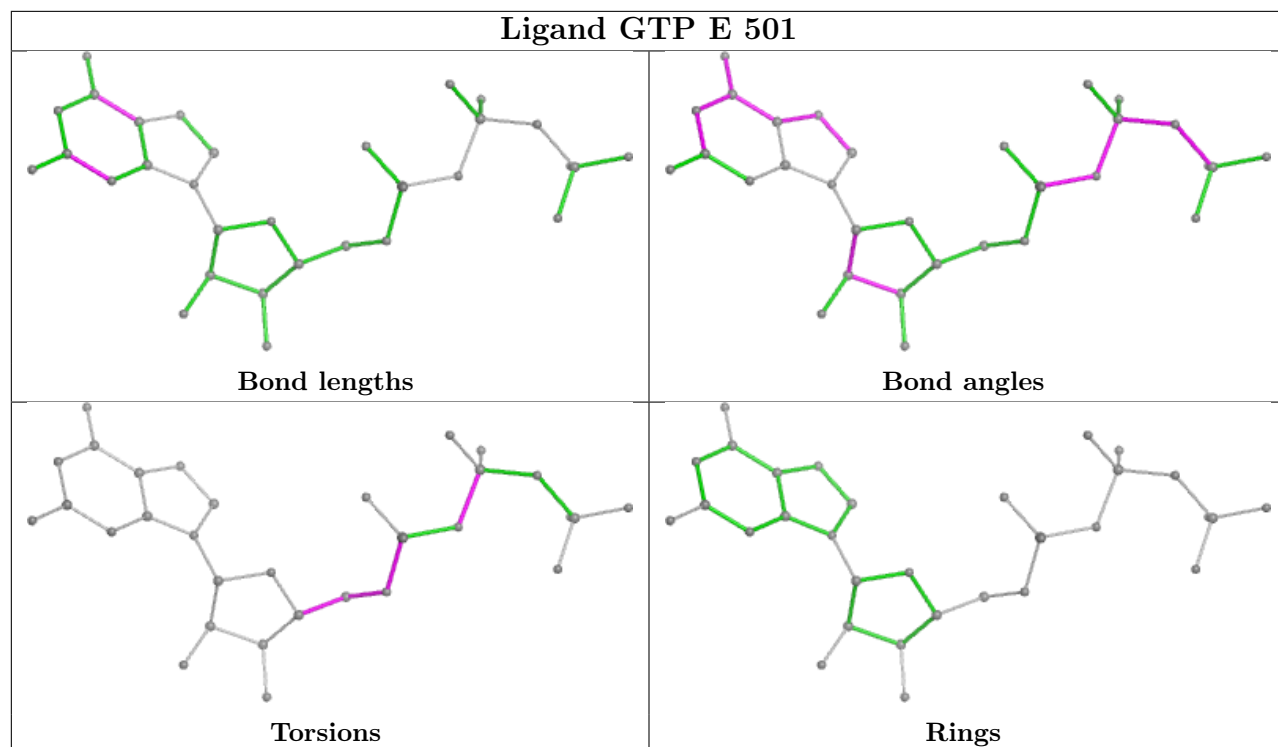
11 monomers are involved in 18 short contacts:

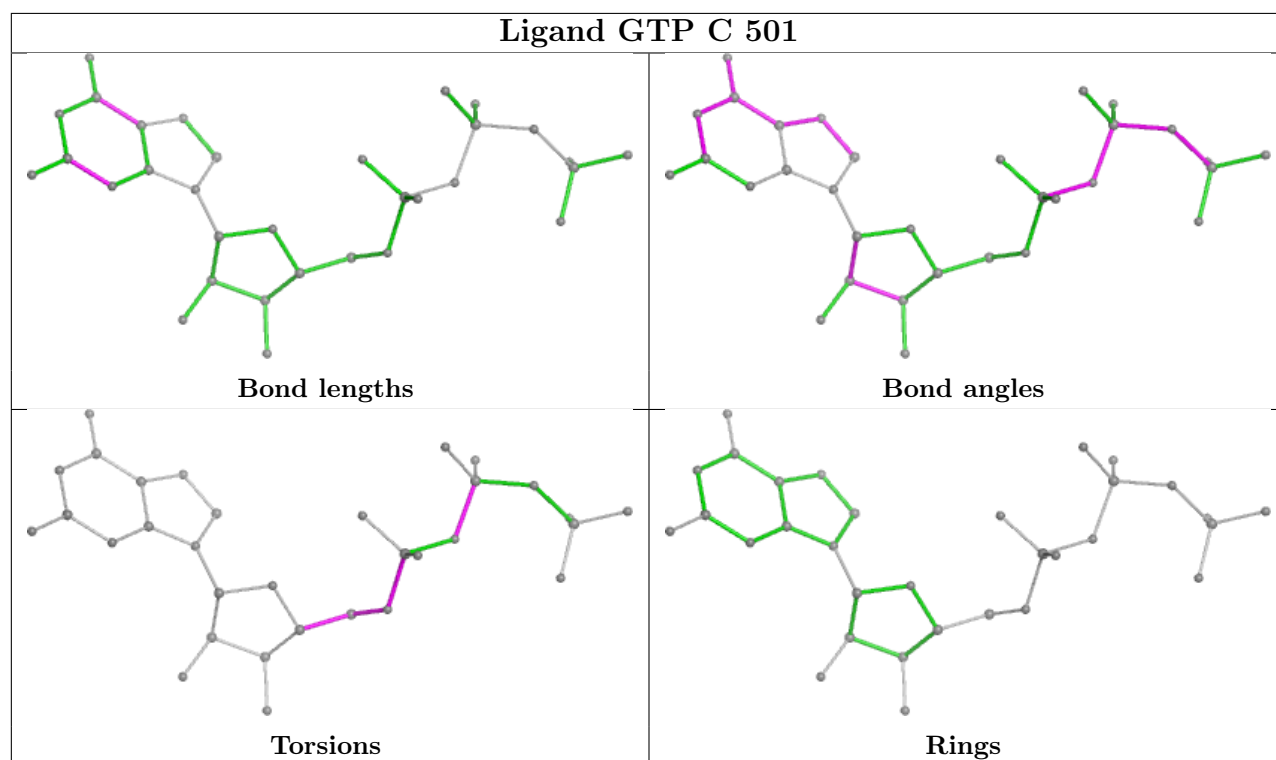
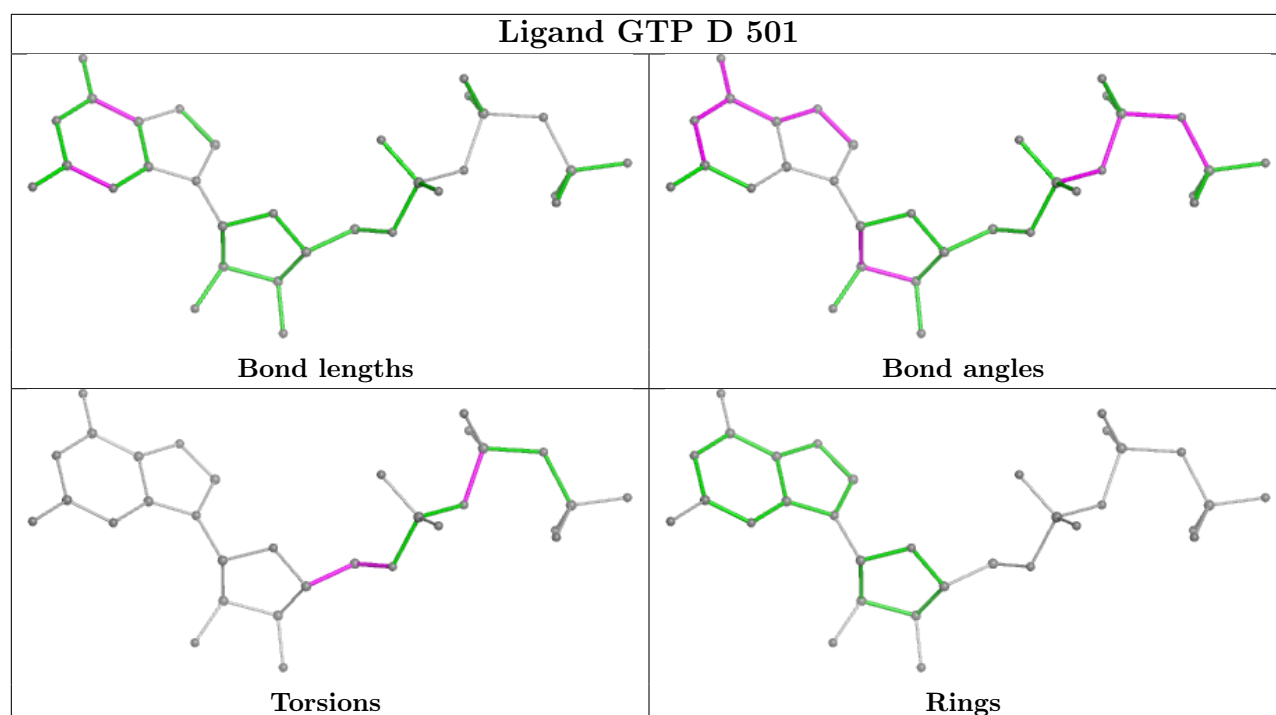
Mol	Chain	Res	Type	Clashes	Symm-Clashes
3	A	501	GTP	1	0
3	I	501	GTP	2	0
3	N	501	GTP	1	0
3	R	501	GTP	1	0
3	F	501	GTP	3	0
3	D	501	GTP	2	0
3	C	501	GTP	2	0
3	G	501	GTP	1	0
3	B	501	GTP	3	0
3	P	501	GTP	1	0
3	K	501	GTP	1	0

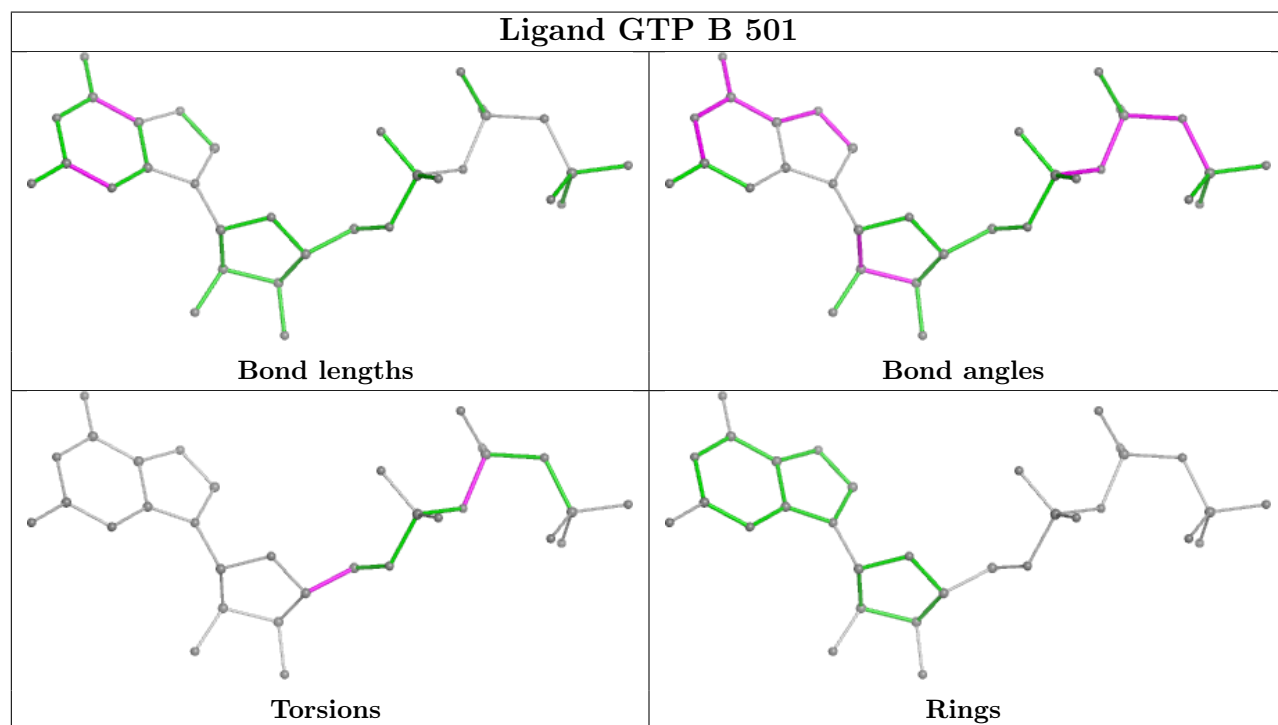
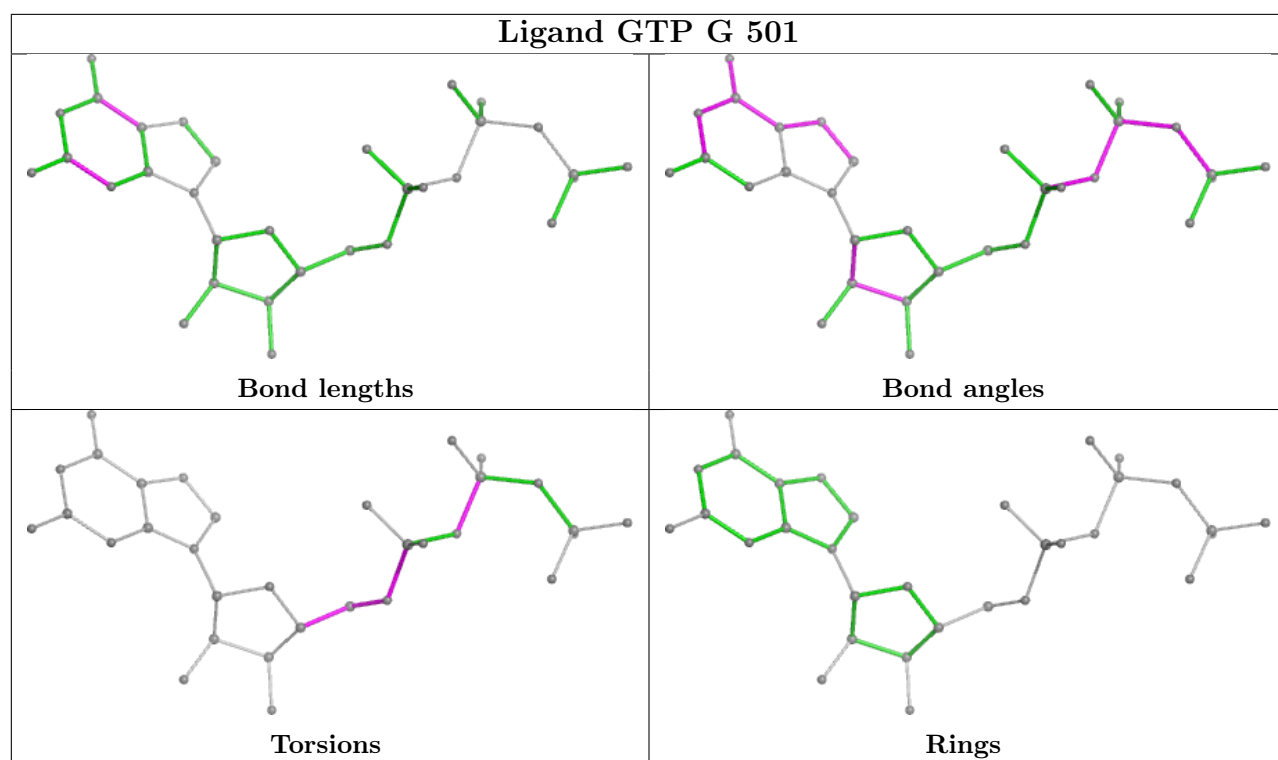
The following is a two-dimensional graphical depiction of Mogul quality analysis of bond lengths, bond angles, torsion angles, and ring geometry for all instances of the Ligand of Interest. In addition, ligands with molecular weight > 250 and outliers as shown on the validation Tables will also be included. For torsion angles, if less than 5% of the Mogul distribution of torsion angles is within 10 degrees of the torsion angle in question, then that torsion angle is considered an outlier. Any bond that is central to one or more torsion angles identified as an outlier by Mogul will be highlighted in the graph. For rings, the root-mean-square deviation (RMSD) between the ring in question and similar rings identified by Mogul is calculated over all ring torsion angles. If the average RMSD is greater than 60 degrees and the minimal RMSD between the ring in question and any Mogul-identified rings is also greater than 60 degrees, then that ring is considered an outlier. The outliers are highlighted in purple. The color gray indicates Mogul did not find sufficient equivalents in the CSD to analyse the geometry.

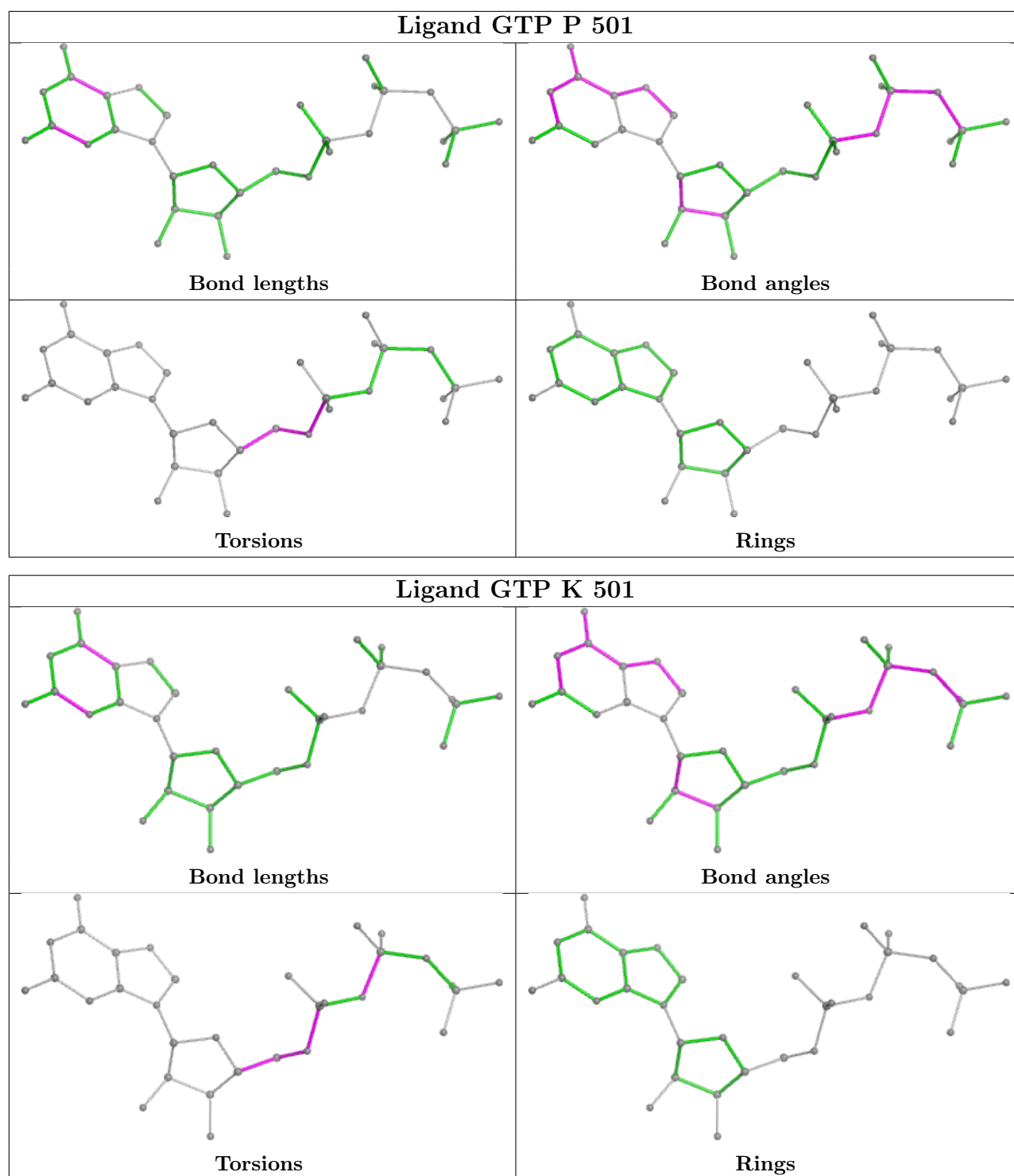












5.7 Other polymers ⓘ

There are no such residues in this entry.

5.8 Polymer linkage issues ⓘ

There are no chain breaks in this entry.

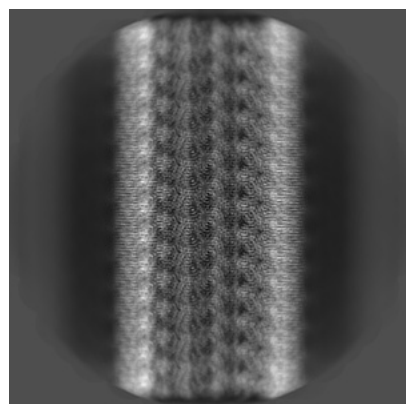
6 Map visualisation [i](#)

This section contains visualisations of the EMDB entry EMD-50174. These allow visual inspection of the internal detail of the map and identification of artifacts.

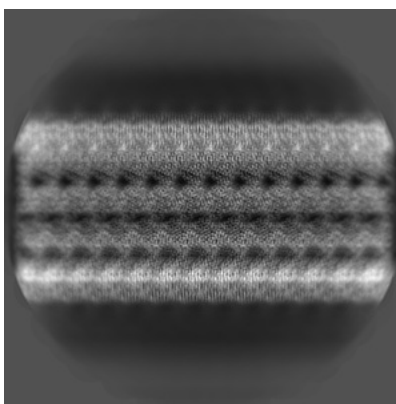
Images derived from a raw map, generated by summing the deposited half-maps, are presented below the corresponding image components of the primary map to allow further visual inspection and comparison with those of the primary map.

6.1 Orthogonal projections [i](#)

6.1.1 Primary map



X

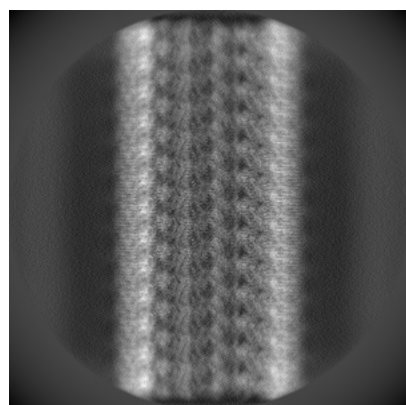


Y

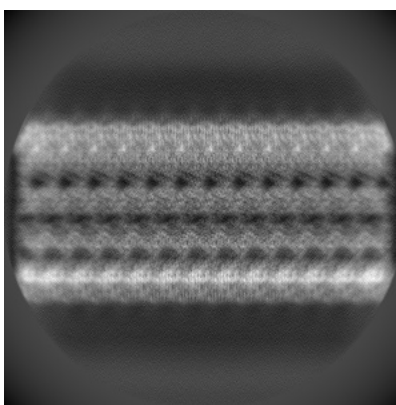


Z

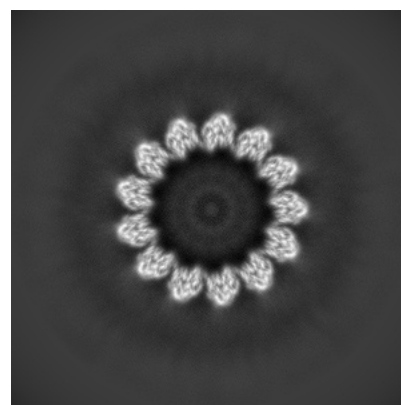
6.1.2 Raw map



X



Y

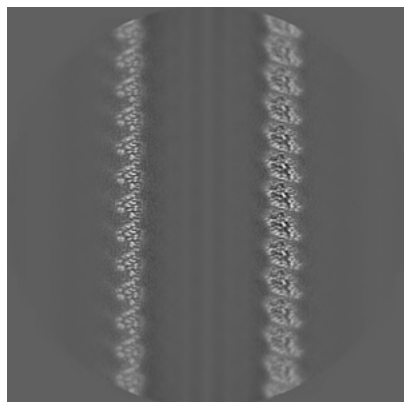


Z

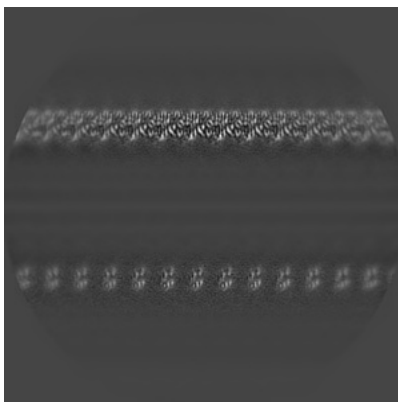
The images above show the map projected in three orthogonal directions.

6.2 Central slices [i](#)

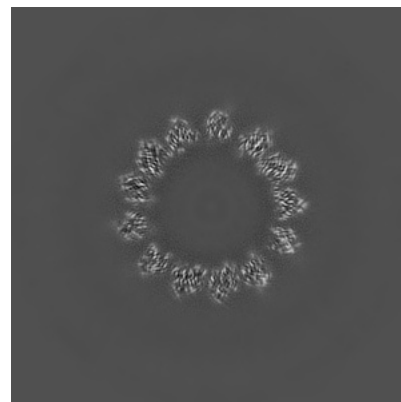
6.2.1 Primary map



X Index: 300

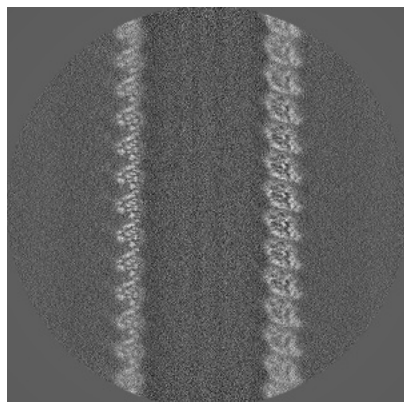


Y Index: 300

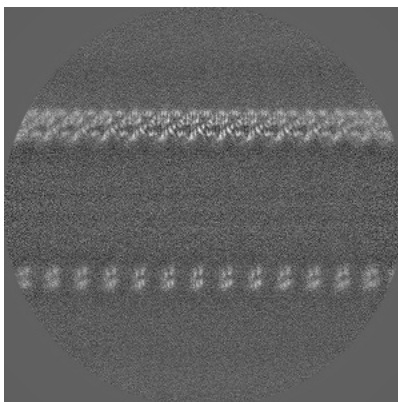


Z Index: 300

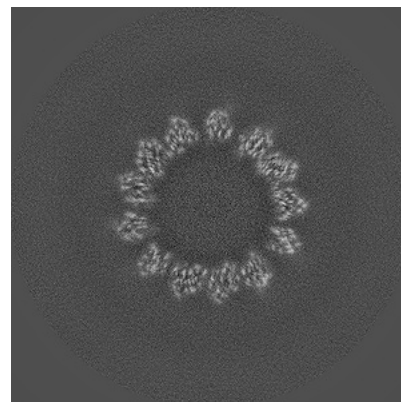
6.2.2 Raw map



X Index: 300



Y Index: 300

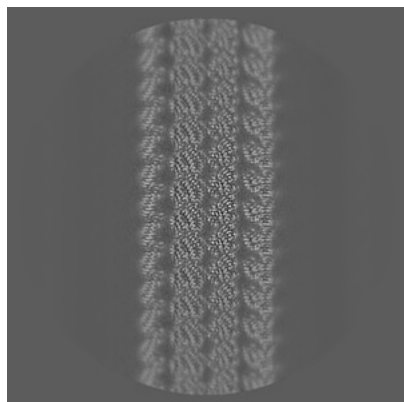


Z Index: 300

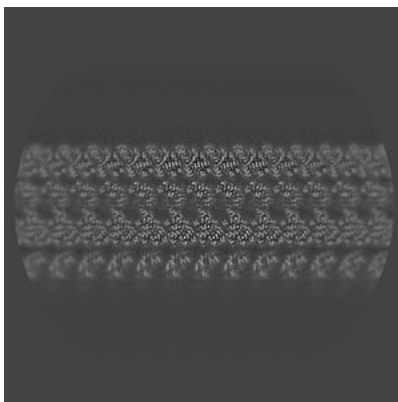
The images above show central slices of the map in three orthogonal directions.

6.3 Largest variance slices [i](#)

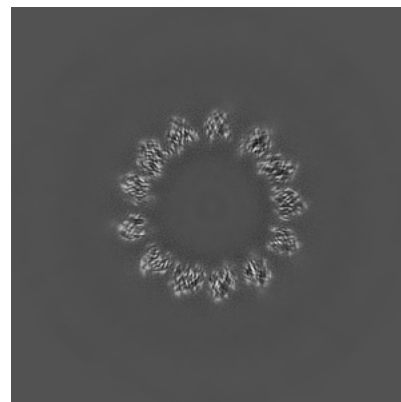
6.3.1 Primary map



X Index: 195

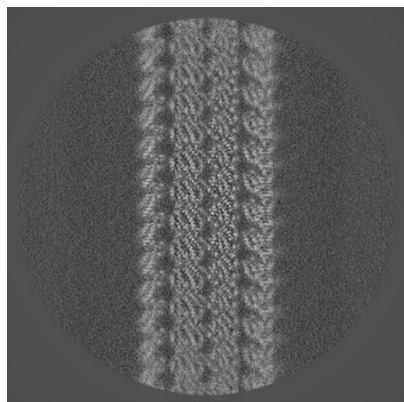


Y Index: 200

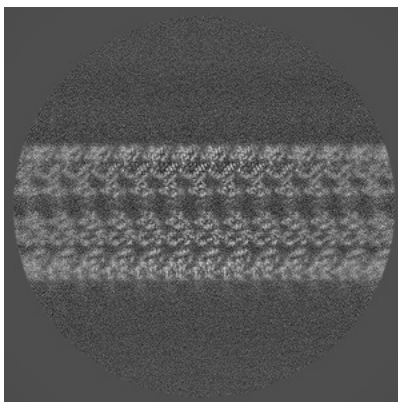


Z Index: 302

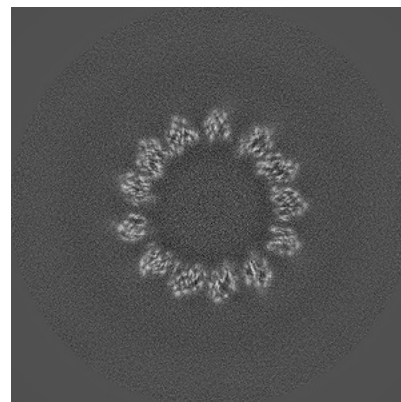
6.3.2 Raw map



X Index: 195



Y Index: 205

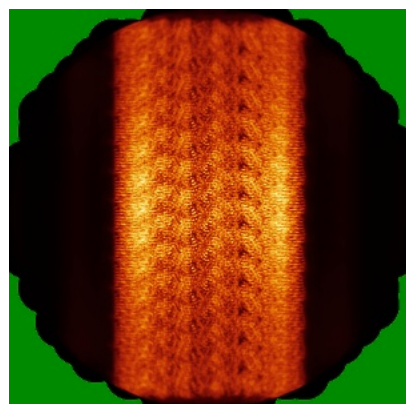


Z Index: 302

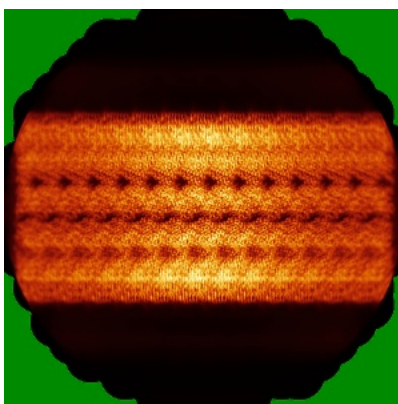
The images above show the largest variance slices of the map in three orthogonal directions.

6.4 Orthogonal standard-deviation projections (False-color) [i](#)

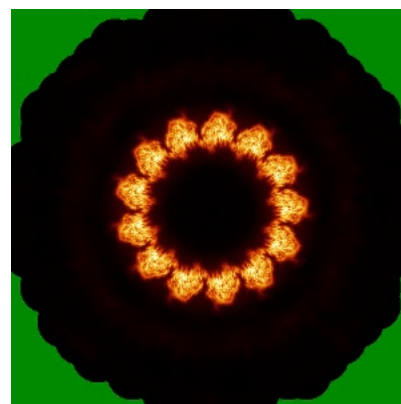
6.4.1 Primary map



X

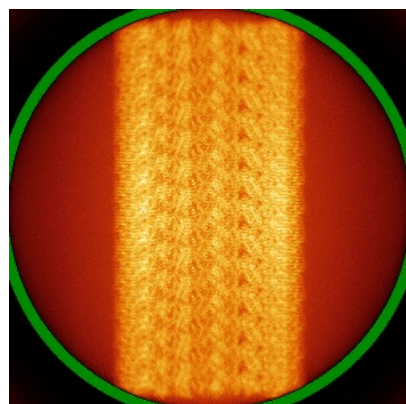


Y

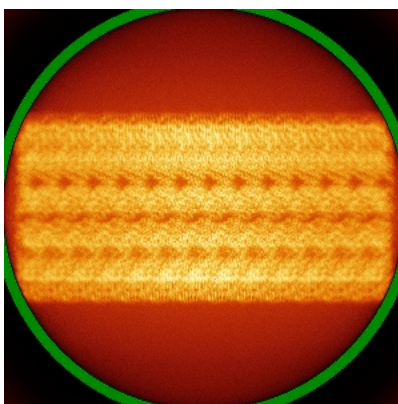


Z

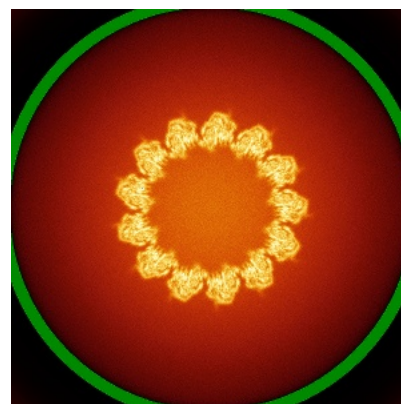
6.4.2 Raw map



X



Y

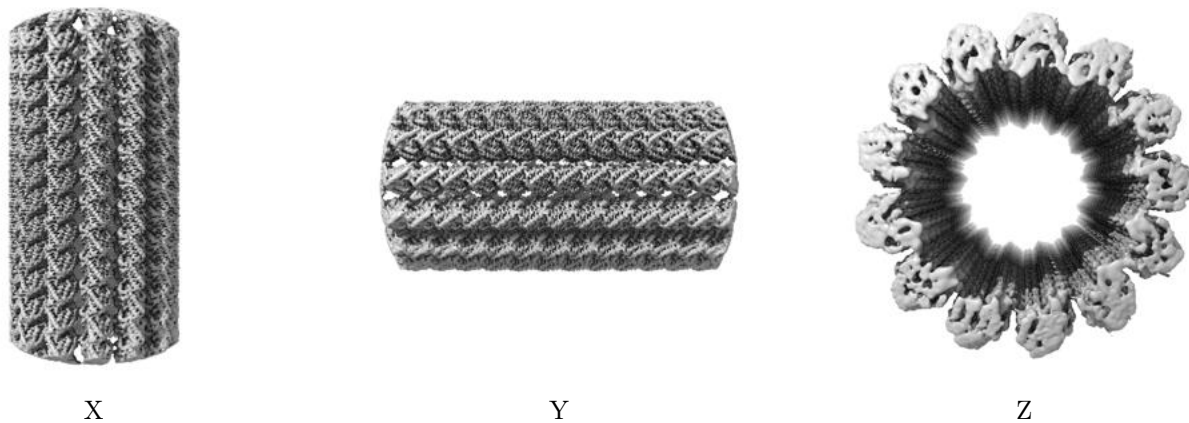


Z

The images above show the map standard deviation projections with false color in three orthogonal directions. Minimum values are shown in green, max in blue, and dark to light orange shades represent small to large values respectively.

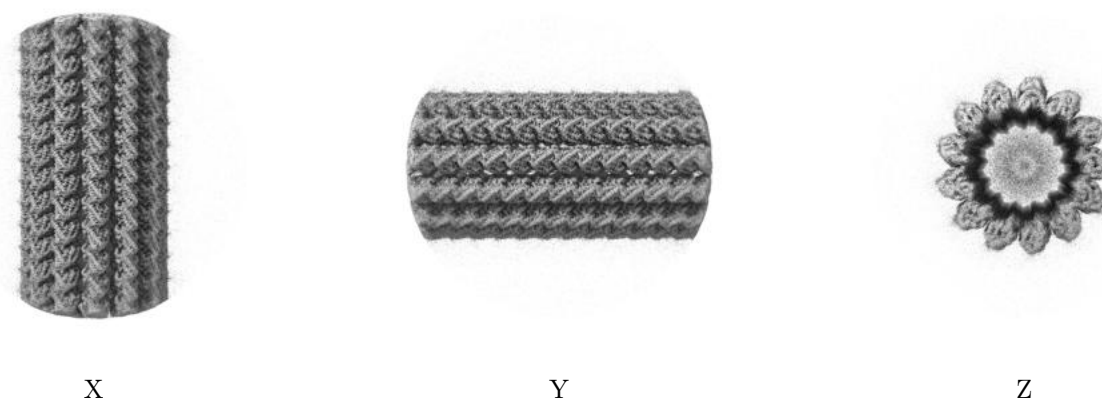
6.5 Orthogonal surface views [i](#)

6.5.1 Primary map



The images above show the 3D surface view of the map at the recommended contour level 0.01. These images, in conjunction with the slice images, may facilitate assessment of whether an appropriate contour level has been provided.

6.5.2 Raw map



These images show the 3D surface of the raw map. The raw map's contour level was selected so that its surface encloses the same volume as the primary map does at its recommended contour level.

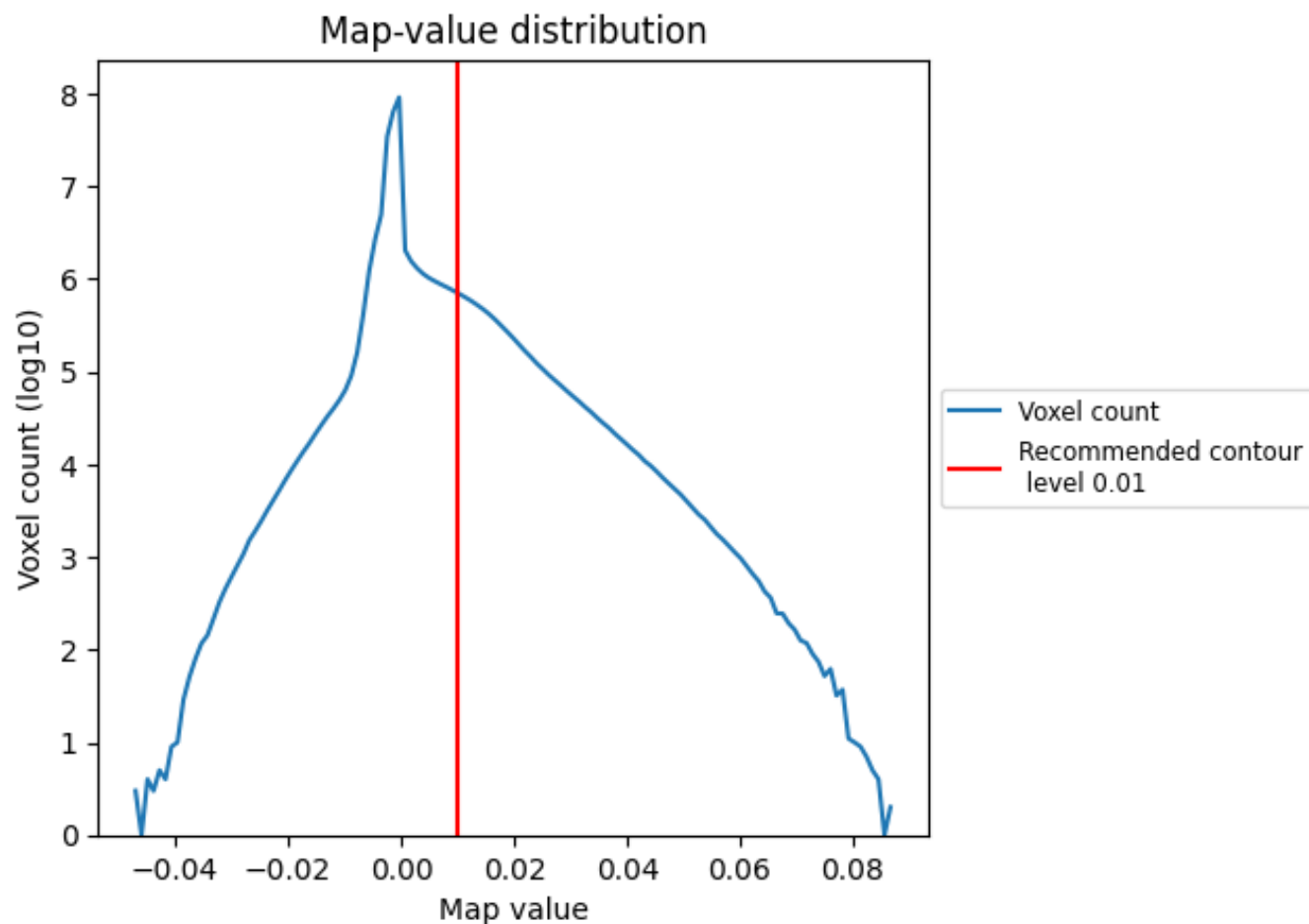
6.6 Mask visualisation [i](#)

This section was not generated. No masks/segmentation were deposited.

7 Map analysis [i](#)

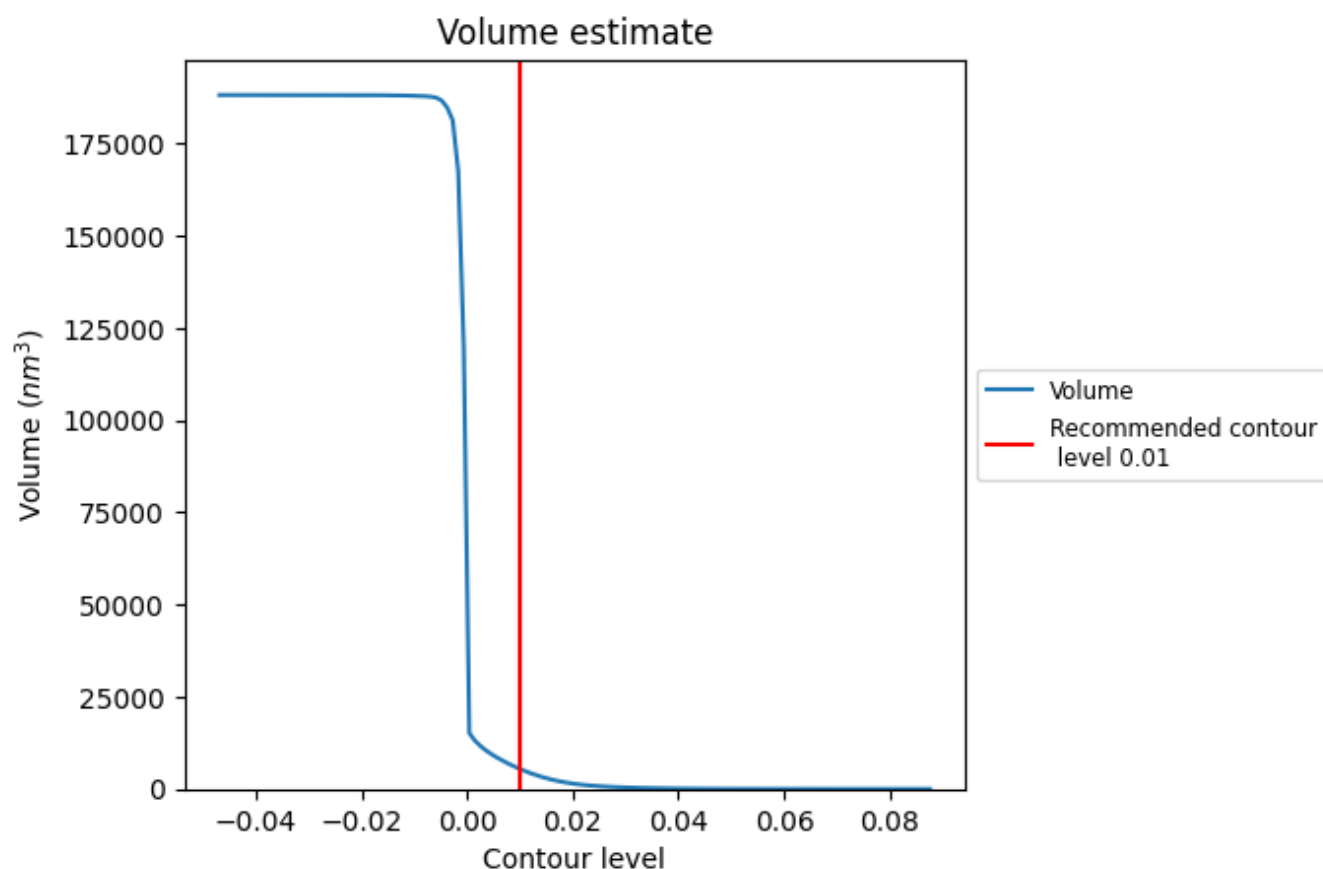
This section contains the results of statistical analysis of the map.

7.1 Map-value distribution [i](#)



The map-value distribution is plotted in 128 intervals along the x-axis. The y-axis is logarithmic. A spike in this graph at zero usually indicates that the volume has been masked.

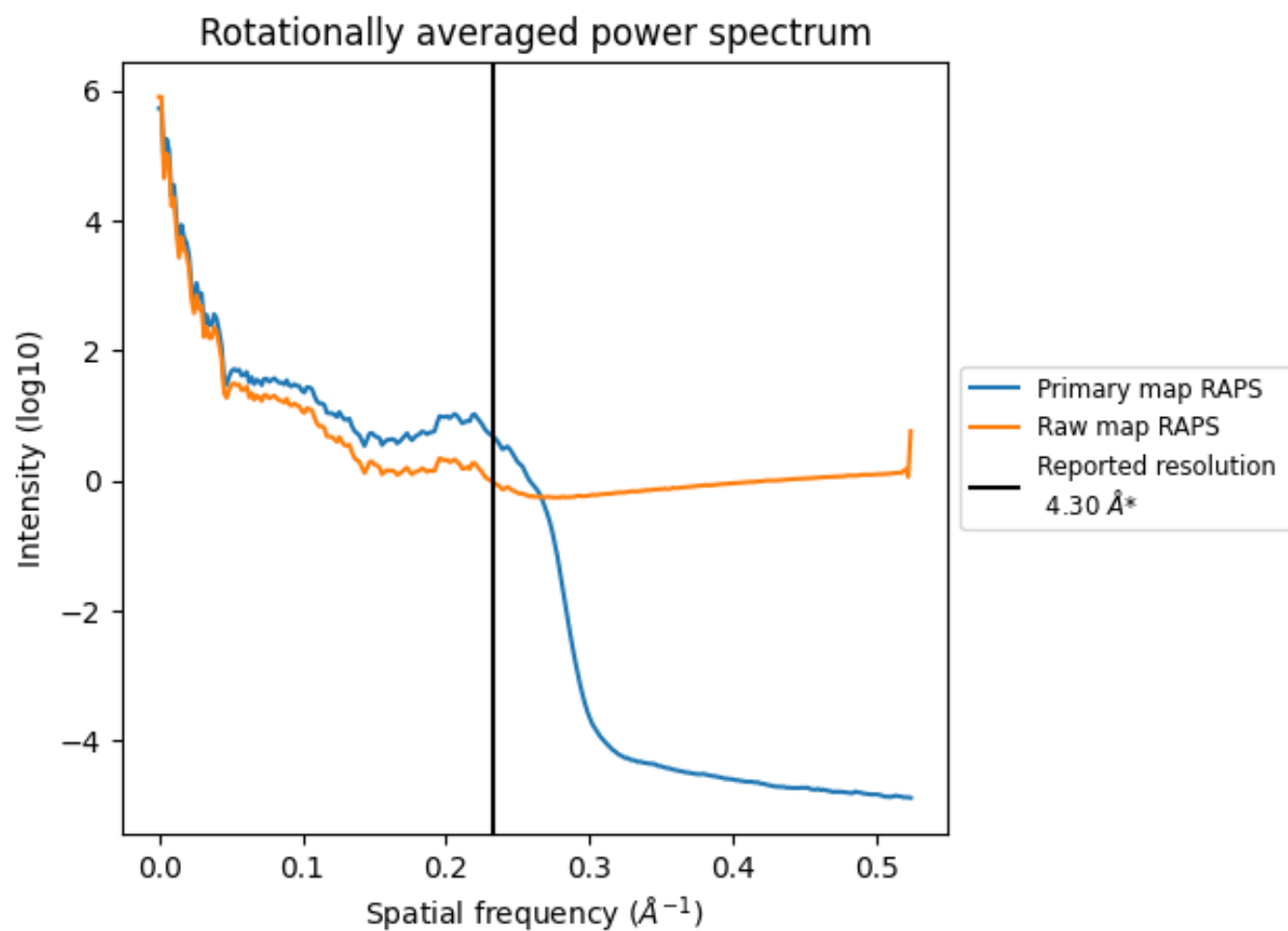
7.2 Volume estimate [i](#)



The volume at the recommended contour level is 5402 nm^3 ; this corresponds to an approximate mass of 4880 kDa.

The volume estimate graph shows how the enclosed volume varies with the contour level. The recommended contour level is shown as a vertical line and the intersection between the line and the curve gives the volume of the enclosed surface at the given level.

7.3 Rotationally averaged power spectrum ⓘ

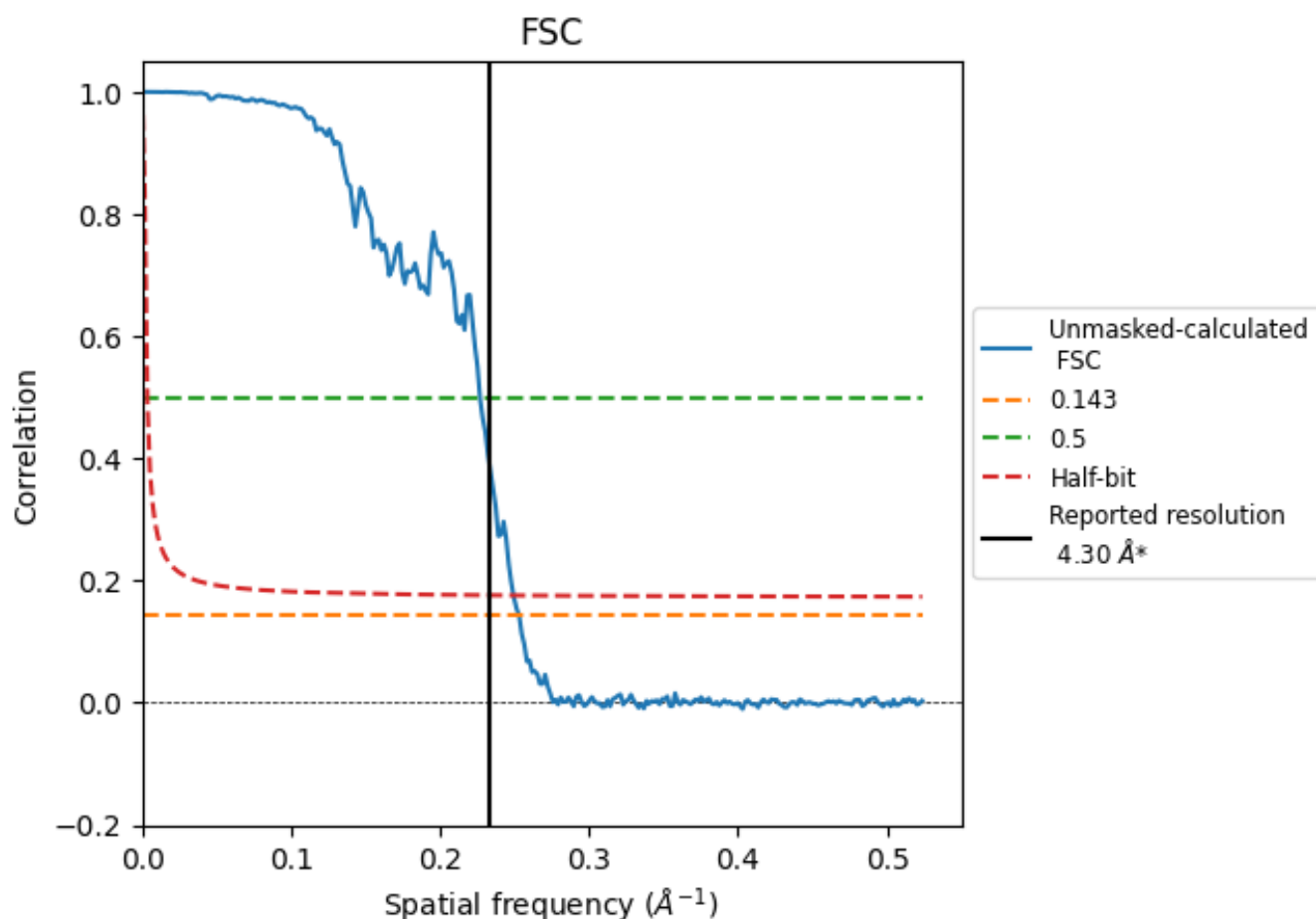


*Reported resolution corresponds to spatial frequency of 0.233 Å⁻¹

8 Fourier-Shell correlation [i](#)

Fourier-Shell Correlation (FSC) is the most commonly used method to estimate the resolution of single-particle and subtomogram-averaged maps. The shape of the curve depends on the imposed symmetry, mask and whether or not the two 3D reconstructions used were processed from a common reference. The reported resolution is shown as a black line. A curve is displayed for the half-bit criterion in addition to lines showing the 0.143 gold standard cut-off and 0.5 cut-off.

8.1 FSC [i](#)



*Reported resolution corresponds to spatial frequency of 0.233 \AA^{-1}

8.2 Resolution estimates [i](#)

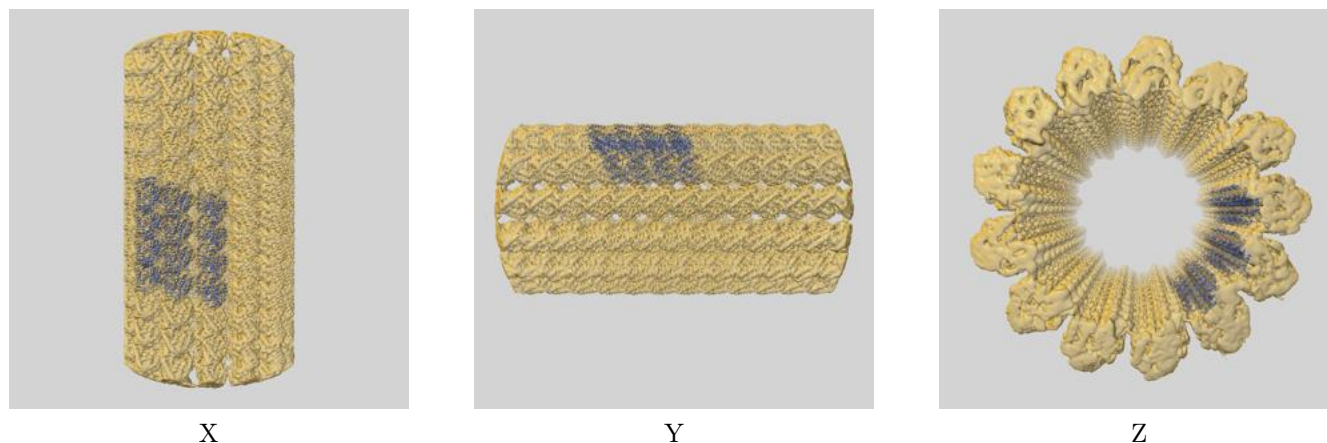
Resolution estimate (Å)	Estimation criterion (FSC cut-off)		
	0.143	0.5	Half-bit
Reported by author	4.30	-	-
Author-provided FSC curve	-	-	-
Unmasked-calculated*	3.95	4.41	4.01

*Resolution estimate based on FSC curve calculated by comparison of deposited half-maps.

9 Map-model fit [i](#)

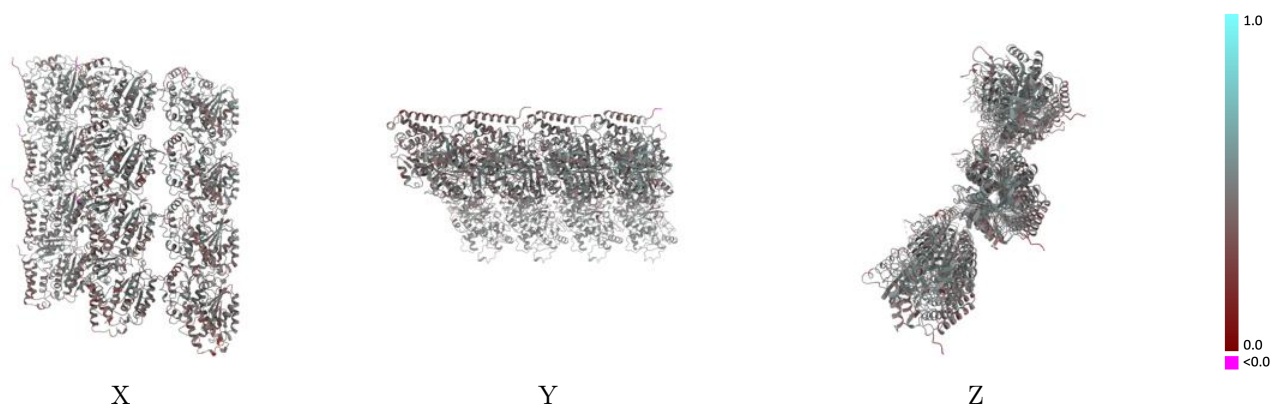
This section contains information regarding the fit between EMDB map EMD-50174 and PDB model 9F3H. Per-residue inclusion information can be found in section [3](#) on page [10](#).

9.1 Map-model overlay [i](#)



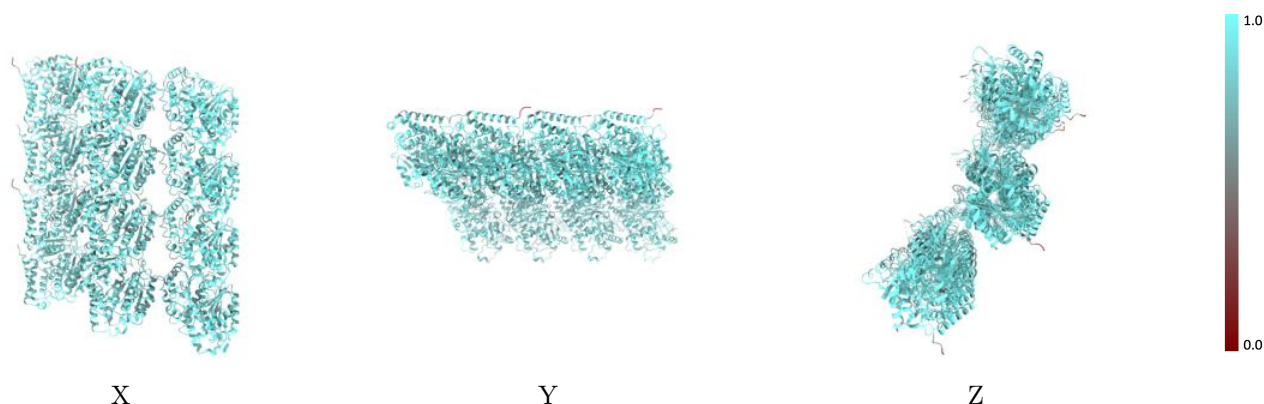
The images above show the 3D surface view of the map at the recommended contour level 0.01 at 50% transparency in yellow overlaid with a ribbon representation of the model coloured in blue. These images allow for the visual assessment of the quality of fit between the atomic model and the map.

9.2 Q-score mapped to coordinate model [i](#)



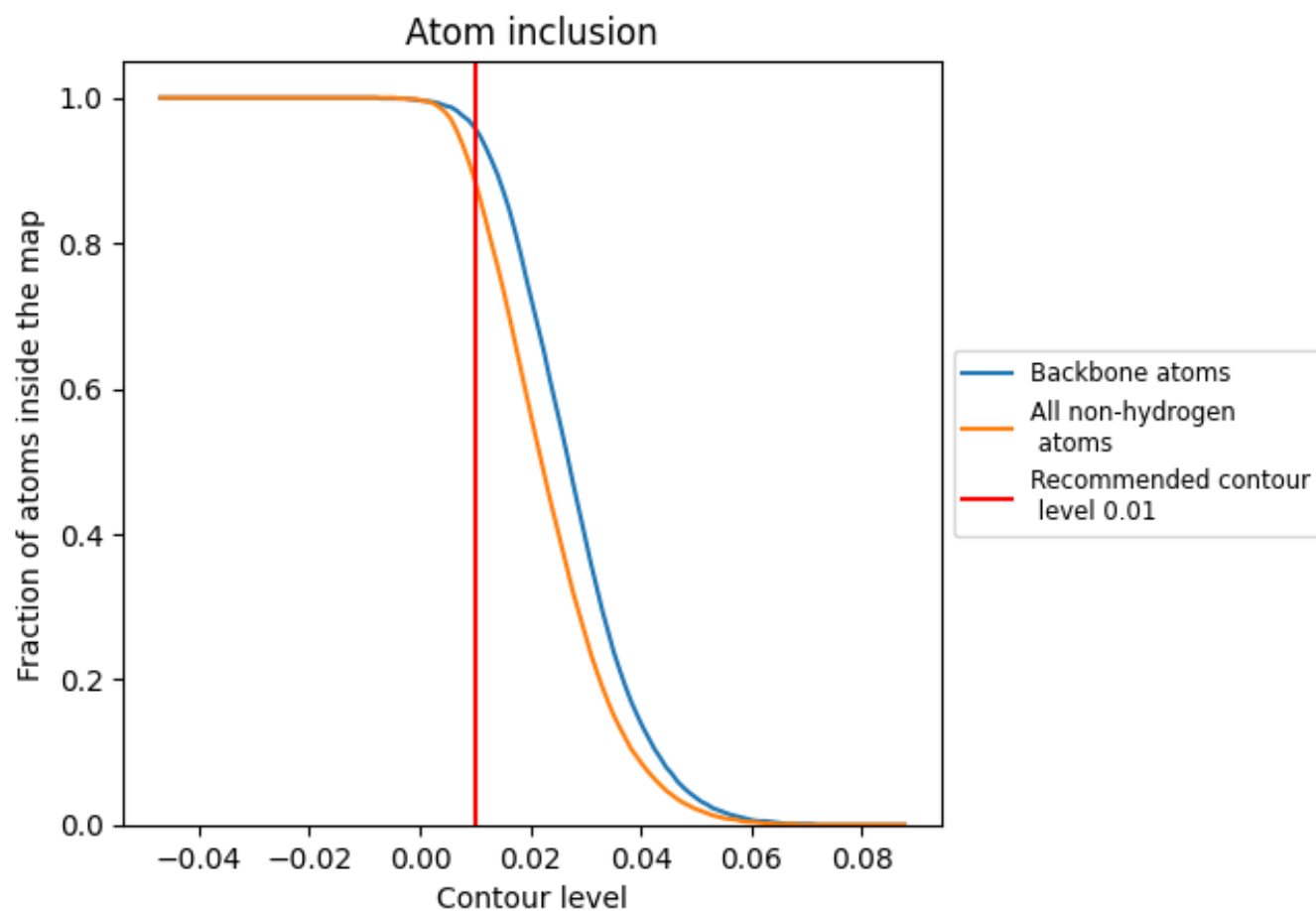
The images above show the model with each residue coloured according to its Q-score. This shows their resolvability in the map with higher Q-score values reflecting better resolvability. Please note: Q-score is calculating the resolvability of atoms, and thus high values are only expected at resolutions at which atoms can be resolved. Low Q-score values may therefore be expected for many entries.

9.3 Atom inclusion mapped to coordinate model [i](#)



The images above show the model with each residue coloured according to its atom inclusion. This shows to what extent they are inside the map at the recommended contour level (0.01).

9.4 Atom inclusion [i](#)



At the recommended contour level, 96% of all backbone atoms, 88% of all non-hydrogen atoms, are inside the map.

9.5 Map-model fit summary ⓘ

The table lists the average atom inclusion at the recommended contour level (0.01) and Q-score for the entire model and for each chain.

Chain	Atom inclusion	Q-score
All	<div><div></div></div> 0.8850	<div><div></div></div> 0.4580
A	<div><div></div></div> 0.8750	<div><div></div></div> 0.4470
B	<div><div></div></div> 0.8950	<div><div></div></div> 0.4600
C	<div><div></div></div> 0.8770	<div><div></div></div> 0.4530
D	<div><div></div></div> 0.8930	<div><div></div></div> 0.4690
E	<div><div></div></div> 0.8840	<div><div></div></div> 0.4620
F	<div><div></div></div> 0.9040	<div><div></div></div> 0.4720
G	<div><div></div></div> 0.8960	<div><div></div></div> 0.4690
I	<div><div></div></div> 0.8940	<div><div></div></div> 0.4710
K	<div><div></div></div> 0.8930	<div><div></div></div> 0.4690
N	<div><div></div></div> 0.8740	<div><div></div></div> 0.4410
P	<div><div></div></div> 0.8620	<div><div></div></div> 0.4340
R	<div><div></div></div> 0.8740	<div><div></div></div> 0.4460

