



# Full wwPDB EM Validation Report ⓘ

Oct 21, 2024 – 03:24 PM JST

PDB ID : 7F3Q  
EMDB ID : EMD-31434  
Title : SARS-CoV-2 RBD in complex with A5-10 Fab and A34-2 Fab  
Authors : Dou, Y.; Wang, X.; Liu, P.; Lu, B.; Wang, K.  
Deposited on : 2021-06-16  
Resolution : 3.30 Å(reported)

This is a Full wwPDB EM Validation Report for a publicly released PDB entry.

We welcome your comments at [validation@mail.wwpdb.org](mailto:validation@mail.wwpdb.org)

A user guide is available at

<https://www.wwpdb.org/validation/2017/EMValidationReportHelp>

with specific help available everywhere you see the ⓘ symbol.

The types of validation reports are described at

<http://www.wwpdb.org/validation/2017/FAQs#types>.

---

The following versions of software and data (see [references ⓘ](#)) were used in the production of this report:

EMDB validation analysis : 0.0.1.dev113  
Mogul : 1.8.5 (274361), CSD as541be (2020)  
MolProbity : 4.02b-467  
buster-report : 1.1.7 (2018)  
Percentile statistics : 20231227.v01 (using entries in the PDB archive December 27th 2023)  
MapQ : 1.9.13  
Ideal geometry (proteins) : Engh & Huber (2001)  
Ideal geometry (DNA, RNA) : Parkinson et al. (1996)  
Validation Pipeline (wwPDB-VP) : 2.39

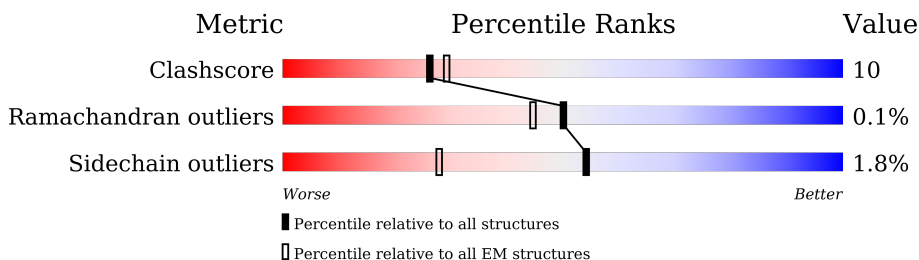
# 1 Overall quality at a glance

The following experimental techniques were used to determine the structure:

*ELECTRON MICROSCOPY*

The reported resolution of this entry is 3.30 Å.

Percentile scores (ranging between 0-100) for global validation metrics of the entry are shown in the following graphic. The table shows the number of entries on which the scores are based.



Metric	Whole archive (#Entries)	EM structures (#Entries)
Clashscore	210492	15764
Ramachandran outliers	207382	16835
Sidechain outliers	206894	16415

The table below summarises the geometric issues observed across the polymeric chains and their fit to the map. The red, orange, yellow and green segments of the bar indicate the fraction of residues that contain outliers for  $\geq 3$ , 2, 1 and 0 types of geometric quality criteria respectively. A grey segment represents the fraction of residues that are not modelled. The numeric value for each fraction is indicated below the corresponding segment, with a dot representing fractions  $\leq 5\%$ . The upper red bar (where present) indicates the fraction of residues that have poor fit to the EM map (all-atom inclusion  $< 40\%$ ). The numeric value is given above the bar.

Mol	Chain	Length	Quality of chain
1	A	1273	 12% 85%
2	H	219	 9% 80% 16%
3	L	214	 11% 81% 17%
4	C	227	 9% 78% 21%
5	B	205	 9% 73% 26%

## 2 Entry composition [i](#)

There are 7 unique types of molecules in this entry. The entry contains 8003 atoms, of which 0 are hydrogens and 0 are deuteriums.

In the tables below, the AltConf column contains the number of residues with at least one atom in alternate conformation and the Trace column contains the number of residues modelled with at most 2 atoms.

- Molecule 1 is a protein called Spike glycoprotein.

Mol	Chain	Residues	Atoms					AltConf	Trace
1	A	194	Total	C	N	O	S	0	0
			1536	984	256	288	8		

- Molecule 2 is a protein called Heavy chain of A34-2 Fab.

Mol	Chain	Residues	Atoms					AltConf	Trace
2	H	211	Total	C	N	O	S	0	0
			1594	1008	271	309	6		

- Molecule 3 is a protein called Light chain of A34-2 Fab.

Mol	Chain	Residues	Atoms					AltConf	Trace
3	L	213	Total	C	N	O	S	0	0
			1596	996	269	326	5		

- Molecule 4 is a protein called Heavy chain of A5-10 Fab.

Mol	Chain	Residues	Atoms					AltConf	Trace
4	C	227	Total	C	N	O	S	0	0
			1691	1075	277	333	6		

- Molecule 5 is a protein called Light chain of A5-10 Fab.

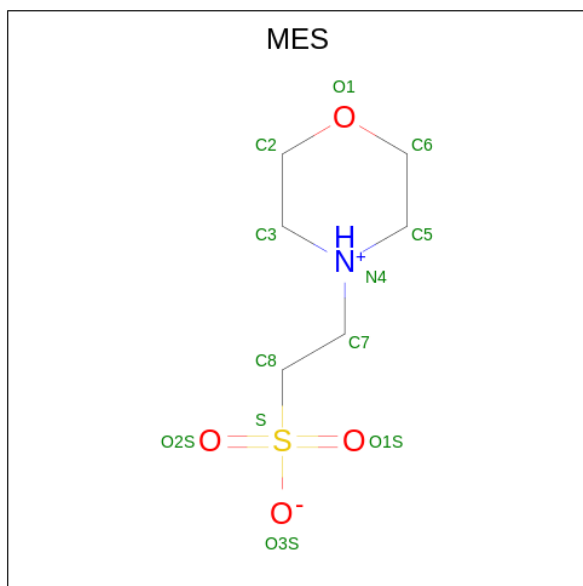
Mol	Chain	Residues	Atoms					AltConf	Trace
5	B	205	Total	C	N	O	S	0	0
			1560	978	264	313	5		

- Molecule 6 is 2-acetamido-2-deoxy-beta-D-glucopyranose (three-letter code: NAG) (formula:  $C_8H_{15}NO_6$ ) (labeled as "Ligand of Interest" by depositor).



Mol	Chain	Residues	Atoms				AltConf
6	A	1	Total	C	N	O	0
			14	8	1	5	

- Molecule 7 is 2-(N-MORPHOLINO)-ETHANESULFONIC ACID (three-letter code: MES) (formula:  $C_6H_{13}NO_4S$ ) (labeled as "Ligand of Interest" by depositor).

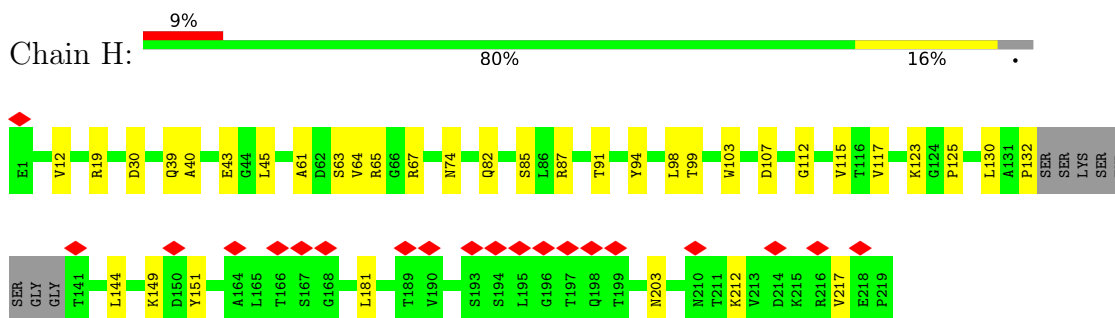


Mol	Chain	Residues	Atoms					AltConf
7	H	1	Total	C	N	O	S	0
			12	6	1	4	1	

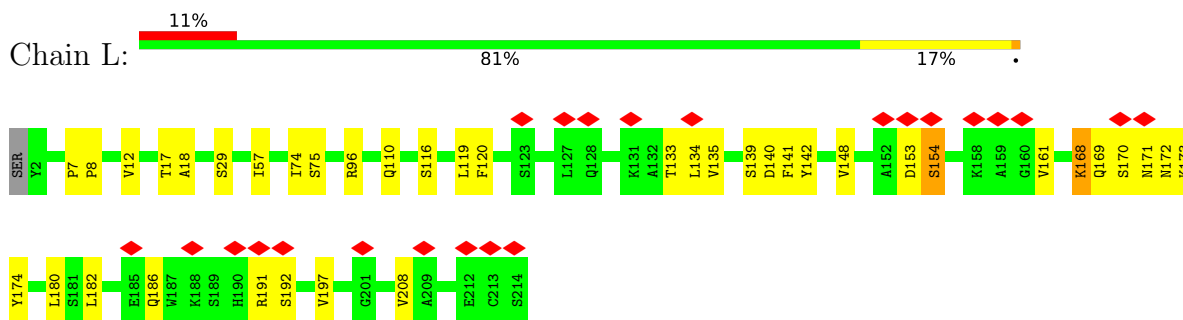




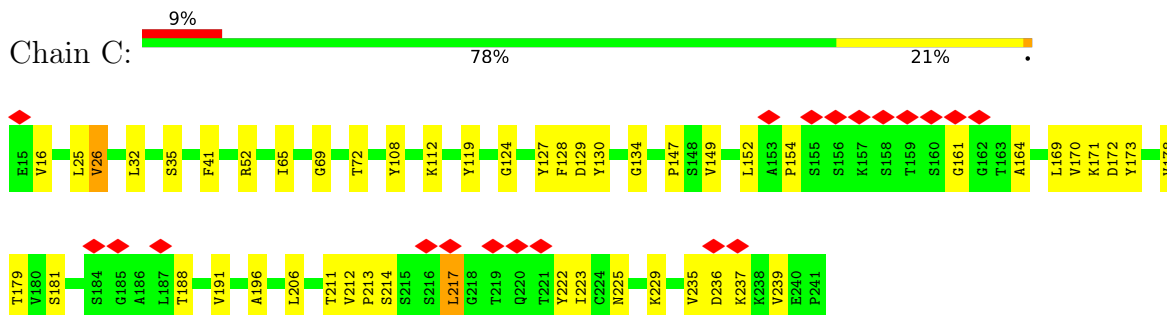
- Molecule 2: Heavy chain of A34-2 Fab



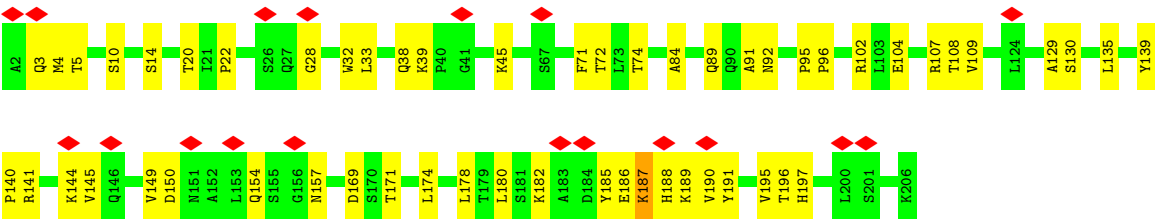
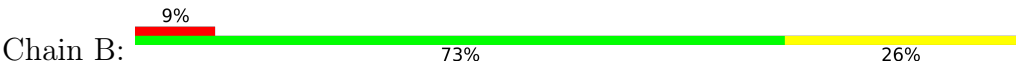
- Molecule 3: Light chain of A34-2 Fab



- Molecule 4: Heavy chain of A5-10 Fab



● Molecule 5: Light chain of A5-10 Fab



## 4 Experimental information

Property	Value	Source
EM reconstruction method	SINGLE PARTICLE	Depositor
Imposed symmetry	POINT, Not provided	
Number of particles used	401023	Depositor
Resolution determination method	FSC 0.143 CUT-OFF	Depositor
CTF correction method	PHASE FLIPPING ONLY	Depositor
Microscope	FEI TITAN KRIOS	Depositor
Voltage (kV)	300	Depositor
Electron dose ( $e^-/\text{\AA}^2$ )	50	Depositor
Minimum defocus (nm)	1500	Depositor
Maximum defocus (nm)	2500	Depositor
Magnification	Not provided	
Image detector	GATAN K3 (6k x 4k)	Depositor
Maximum map value	0.080	Depositor
Minimum map value	-0.051	Depositor
Average map value	0.001	Depositor
Map value standard deviation	0.006	Depositor
Recommended contour level	0.014	Depositor
Map size ( $\text{\AA}$ )	92.96, 84.659996, 141.93	wwPDB
Map dimensions	171, 102, 112	wwPDB
Map angles ( $^\circ$ )	90.0, 90.0, 90.0	wwPDB
Pixel spacing ( $\text{\AA}$ )	0.83, 0.83, 0.83	Depositor

## 5 Model quality

### 5.1 Standard geometry

Bond lengths and bond angles in the following residue types are not validated in this section: MES, NAG

The Z score for a bond length (or angle) is the number of standard deviations the observed value is removed from the expected value. A bond length (or angle) with  $|Z| > 5$  is considered an outlier worth inspection. RMSZ is the root-mean-square of all Z scores of the bond lengths (or angles).

Mol	Chain	Bond lengths		Bond angles	
		RMSZ	$\# Z  > 5$	RMSZ	$\# Z  > 5$
1	A	0.28	0/1579	0.50	0/2149
2	H	0.25	0/1634	0.51	0/2228
3	L	0.26	0/1637	0.48	0/2239
4	C	0.48	0/1733	0.65	1/2361 (0.0%)
5	B	0.40	0/1596	0.56	0/2170
All	All	0.35	0/8179	0.55	1/11147 (0.0%)

Chiral center outliers are detected by calculating the chiral volume of a chiral center and verifying if the center is modelled as a planar moiety or with the opposite hand. A planarity outlier is detected by checking planarity of atoms in a peptide group, atoms in a mainchain group or atoms of a sidechain that are expected to be planar.

Mol	Chain	#Chirality outliers	#Planarity outliers
3	L	0	1

There are no bond length outliers.

All (1) bond angle outliers are listed below:

Mol	Chain	Res	Type	Atoms	Z	Observed(°)	Ideal(°)
4	C	52	ARG	NE-CZ-NH2	-5.62	117.49	120.30

There are no chirality outliers.

All (1) planarity outliers are listed below:

Mol	Chain	Res	Type	Group
3	L	142	TYR	Peptide

## 5.2 Too-close contacts ⓘ

In the following table, the Non-H and H(model) columns list the number of non-hydrogen atoms and hydrogen atoms in the chain respectively. The H(added) column lists the number of hydrogen atoms added and optimized by MolProbity. The Clashes column lists the number of clashes within the asymmetric unit, whereas Symm-Clashes lists symmetry-related clashes.

Mol	Chain	Non-H	H(model)	H(added)	Clashes	Symm-Clashes
1	A	1536	0	1452	33	0
2	H	1594	0	1544	22	0
3	L	1596	0	1535	32	0
4	C	1691	0	1651	42	0
5	B	1560	0	1517	45	0
6	A	14	0	13	0	0
7	H	12	0	12	2	0
All	All	8003	0	7724	156	0

The all-atom clashscore is defined as the number of clashes found per 1000 atoms (including hydrogen atoms). The all-atom clashscore for this structure is 10.

All (156) close contacts within the same asymmetric unit are listed below, sorted by their clash magnitude.

Atom-1	Atom-2	Interatomic distance (Å)	Clash overlap (Å)
5:B:20:THR:HG22	5:B:74:THR:CG2	1.67	1.23
4:C:235:VAL:CG1	4:C:237:LYS:HE2	1.70	1.20
5:B:20:THR:CG2	5:B:74:THR:HG22	1.81	1.10
4:C:235:VAL:HG11	4:C:237:LYS:HE2	1.13	1.06
1:A:431:GLY:HA3	1:A:513:LEU:O	1.59	1.01
1:A:379:CYS:HB3	1:A:432:CYS:HA	1.50	0.93
3:L:153:ASP:O	3:L:154:SER:OG	1.85	0.92
4:C:235:VAL:HG11	4:C:237:LYS:CE	2.00	0.92
1:A:346:ARG:HE	4:C:119:TYR:HB2	1.38	0.88
5:B:20:THR:HG22	5:B:74:THR:HG22	0.87	0.84
5:B:3:GLN:HA	5:B:96:PRO:HD2	1.65	0.77
4:C:235:VAL:HG12	4:C:237:LYS:HG2	1.67	0.75
3:L:168:LYS:HG2	3:L:174:TYR:CZ	2.22	0.75
1:A:391:CYS:HA	1:A:525:CYS:HB3	1.68	0.73
4:C:149:VAL:CG1	4:C:237:LYS:HG3	2.19	0.72
4:C:213:PRO:HD2	4:C:217:LEU:HD22	1.71	0.71
4:C:235:VAL:CG1	4:C:237:LYS:CE	2.61	0.70
2:H:149:LYS:HE3	3:L:133:THR:HG21	1.74	0.69
5:B:107:ARG:NH1	5:B:108:THR:O	2.26	0.68
1:A:393:THR:HG21	1:A:518:LEU:H	1.59	0.68

*Continued on next page...*

*Continued from previous page...*

Atom-1	Atom-2	Interatomic distance (Å)	Clash overlap (Å)
5:B:144:LYS:HB2	5:B:196:THR:HB	1.74	0.68
5:B:102:ARG:NH2	5:B:141:ARG:HH21	1.93	0.67
1:A:362:VAL:HG23	1:A:526:GLY:HA3	1.75	0.66
1:A:457:ARG:NH1	1:A:467:ASP:OD2	2.29	0.66
4:C:164:ALA:HB2	4:C:214:SER:HB3	1.78	0.66
5:B:22:PRO:HA	5:B:72:THR:HG22	1.77	0.66
5:B:102:ARG:NH2	5:B:141:ARG:HE	1.97	0.63
2:H:94:TYR:O	2:H:112:GLY:HA2	1.99	0.63
3:L:169:GLN:HB3	3:L:173:LYS:O	1.99	0.63
5:B:182:LYS:HA	5:B:185:TYR:HB3	1.81	0.62
5:B:188:HIS:CD2	5:B:189:LYS:HG2	2.34	0.61
2:H:67:ARG:NH1	2:H:85:SER:O	2.33	0.61
5:B:109:VAL:HG13	5:B:140:PRO:CG	2.31	0.60
3:L:116:SER:HB2	3:L:139:SER:HB3	1.82	0.60
3:L:153:ASP:O	3:L:154:SER:CB	2.49	0.60
1:A:346:ARG:NE	4:C:119:TYR:HB2	2.15	0.60
5:B:109:VAL:HG13	5:B:140:PRO:HG2	1.83	0.60
4:C:196:ALA:HB2	4:C:206:LEU:HD23	1.83	0.59
3:L:169:GLN:HG2	3:L:171:ASN:H	1.67	0.59
2:H:123:LYS:HE3	2:H:181:LEU:HD21	1.83	0.59
4:C:149:VAL:HG11	4:C:237:LYS:HG3	1.84	0.59
1:A:443:SER:O	5:B:32:TRP:HH2	1.84	0.59
5:B:145:VAL:HG12	5:B:195:VAL:HG22	1.84	0.58
1:A:401:VAL:HG22	1:A:509:ARG:HG2	1.85	0.58
4:C:196:ALA:HA	4:C:206:LEU:HB3	1.84	0.58
5:B:154:GLN:HE21	5:B:157:ASN:HD21	1.51	0.58
2:H:125:PRO:HB3	2:H:151:TYR:HB3	1.86	0.57
5:B:4:MET:HG2	5:B:95:PRO:HB3	1.87	0.56
2:H:65:ARG:HH22	3:L:96:ARG:HH22	1.54	0.55
5:B:107:ARG:HD3	5:B:139:TYR:HB2	1.89	0.55
4:C:223:ILE:HD12	4:C:236:ASP:HB3	1.89	0.55
1:A:346:ARG:NE	4:C:119:TYR:CD2	2.75	0.55
4:C:154:PRO:HG3	4:C:239:VAL:HG12	1.89	0.54
4:C:124:GLY:O	5:B:92:ASN:ND2	2.35	0.54
5:B:135:LEU:HD11	5:B:145:VAL:HG11	1.90	0.54
3:L:140:ASP:HB3	3:L:173:LYS:HD3	1.88	0.54
5:B:39:LYS:HD3	5:B:84:ALA:HB2	1.90	0.54
3:L:140:ASP:HB3	3:L:173:LYS:CE	2.37	0.54
4:C:235:VAL:HG13	4:C:237:LYS:HE2	1.79	0.54
1:A:346:ARG:NE	4:C:119:TYR:HD2	2.05	0.53
1:A:445:VAL:HG13	5:B:28:GLY:O	2.08	0.53

*Continued on next page...*

*Continued from previous page...*

Atom-1	Atom-2	Interatomic distance (Å)	Clash overlap (Å)
4:C:65:ILE:HG13	4:C:72:THR:HG22	1.90	0.53
1:A:346:ARG:HE	4:C:119:TYR:CB	2.17	0.53
2:H:39:GLN:HB2	2:H:45:LEU:HD23	1.91	0.53
1:A:346:ARG:HG2	4:C:119:TYR:CG	2.44	0.53
2:H:203:ASN:ND2	7:H:301:MES:O3S	2.33	0.53
1:A:393:THR:HA	1:A:522:ALA:HA	1.91	0.53
1:A:403:ARG:HB3	1:A:406:GLU:HG3	1.91	0.52
2:H:212:LYS:HE2	7:H:301:MES:H31	1.90	0.52
3:L:141:PHE:O	3:L:174:TYR:N	2.30	0.52
1:A:340:GLU:N	1:A:340:GLU:OE2	2.42	0.52
5:B:169:ASP:OD1	5:B:171:THR:OG1	2.23	0.52
3:L:140:ASP:HB3	3:L:173:LYS:CD	2.40	0.52
2:H:63:SER:O	2:H:87:ARG:NH2	2.43	0.51
4:C:170:VAL:HG11	4:C:178:VAL:HG11	1.91	0.51
5:B:71:PHE:O	5:B:72:THR:CG2	2.58	0.51
1:A:346:ARG:HG2	4:C:119:TYR:CD2	2.46	0.51
5:B:102:ARG:CZ	5:B:141:ARG:HE	2.23	0.50
5:B:71:PHE:C	5:B:72:THR:HG23	2.32	0.50
2:H:91:THR:HA	2:H:115:VAL:O	2.11	0.50
4:C:108:TYR:O	4:C:134:GLY:HA2	2.11	0.50
4:C:161:GLY:O	4:C:214:SER:OG	2.30	0.50
5:B:71:PHE:O	5:B:72:THR:HG23	2.11	0.50
3:L:148:VAL:HG22	3:L:197:VAL:HG12	1.93	0.50
4:C:127:TYR:CE1	5:B:91:ALA:CB	2.95	0.50
3:L:134:LEU:HB2	3:L:180:LEU:HB3	1.93	0.50
4:C:181:SER:HB2	4:C:225:ASN:HB2	1.93	0.50
2:H:99:THR:HG21	2:H:103:TRP:HA	1.93	0.49
4:C:41:PHE:CE2	4:C:112:LYS:HD2	2.48	0.49
1:A:393:THR:OG1	1:A:516:GLU:O	2.26	0.49
2:H:19:ARG:NH1	2:H:82:GLN:OE1	2.46	0.49
5:B:130:SER:HA	5:B:178:LEU:O	2.13	0.49
1:A:418:ILE:HA	1:A:422:ASN:HB2	1.95	0.48
4:C:169:LEU:HD23	4:C:171:LYS:HB2	1.96	0.48
4:C:235:VAL:CG1	4:C:237:LYS:HG2	2.40	0.48
5:B:150:ASP:HA	5:B:190:VAL:HB	1.95	0.48
4:C:147:PRO:HB3	4:C:173:TYR:HB3	1.94	0.48
5:B:129:ALA:N	5:B:180:LEU:O	2.41	0.48
3:L:17:THR:HG22	3:L:75:SER:HA	1.95	0.48
5:B:20:THR:CG2	5:B:74:THR:CG2	2.63	0.47
5:B:144:LYS:O	5:B:195:VAL:HA	2.14	0.47
2:H:130:LEU:HD23	3:L:120:PHE:CG	2.50	0.47

*Continued on next page...*

*Continued from previous page...*

Atom-1	Atom-2	Interatomic distance (Å)	Clash overlap (Å)
3:L:12:VAL:HG21	3:L:18:ALA:HB2	1.97	0.47
5:B:187:LYS:HB3	5:B:187:LYS:HE3	1.72	0.47
1:A:442:ASP:O	1:A:448:ASN:ND2	2.44	0.46
3:L:140:ASP:HB3	3:L:173:LYS:HE2	1.96	0.46
1:A:395:VAL:HG22	1:A:515:PHE:HD1	1.80	0.46
5:B:149:VAL:HG13	5:B:191:TYR:HE1	1.80	0.46
1:A:377:PHE:CD2	1:A:434:ILE:HG12	2.51	0.46
2:H:61:ALA:HB3	2:H:64:VAL:HG22	1.96	0.46
1:A:448:ASN:HB3	1:A:497:PHE:HB2	1.97	0.46
2:H:40:ALA:HB3	2:H:43:GLU:HB2	1.97	0.45
2:H:130:LEU:HD23	3:L:120:PHE:CB	2.46	0.45
3:L:119:LEU:HD22	3:L:208:VAL:HG21	1.98	0.45
4:C:171:LYS:HG2	4:C:172:ASP:OD2	2.17	0.45
2:H:144:LEU:HB2	2:H:217:VAL:HG11	1.99	0.45
4:C:152:LEU:HD23	4:C:152:LEU:HA	1.85	0.44
1:A:354:ASN:O	1:A:398:ASP:HA	2.18	0.44
5:B:102:ARG:NH2	5:B:141:ARG:NH2	2.64	0.44
1:A:346:ARG:HE	4:C:119:TYR:HD2	1.62	0.44
1:A:386:LYS:HB2	1:A:386:LYS:HZ3	1.83	0.43
1:A:388:ASN:OD1	1:A:389:ASP:N	2.51	0.43
4:C:65:ILE:HD11	4:C:69:GLY:HA2	2.00	0.43
3:L:17:THR:HA	3:L:74:ILE:O	2.18	0.43
4:C:212:VAL:HG21	4:C:222:TYR:OH	2.18	0.43
3:L:110:GLN:HE22	3:L:172:ASN:ND2	2.16	0.43
4:C:112:LYS:O	4:C:128:PHE:HA	2.18	0.43
4:C:129:ASP:OD1	4:C:130:TYR:N	2.50	0.43
5:B:38:GLN:O	5:B:84:ALA:HB1	2.19	0.42
5:B:139:TYR:HB3	5:B:140:PRO:HD3	2.01	0.42
5:B:189:LYS:HD3	5:B:189:LYS:HA	1.85	0.42
2:H:132:PRO:HB3	2:H:144:LEU:HB3	2.00	0.42
3:L:161:VAL:HG22	3:L:180:LEU:HD13	2.01	0.42
4:C:16:VAL:HB	4:C:130:TYR:CE2	2.54	0.42
3:L:135:VAL:HG12	3:L:135:VAL:O	2.20	0.42
2:H:12:VAL:O	2:H:117:VAL:HA	2.20	0.42
3:L:169:GLN:HG2	3:L:170:SER:N	2.33	0.42
3:L:172:ASN:O	3:L:173:LYS:C	2.58	0.42
2:H:30:ASP:OD1	2:H:74:ASN:HB3	2.20	0.41
5:B:135:LEU:HB2	5:B:174:LEU:HB3	2.02	0.41
4:C:188:THR:O	4:C:191:VAL:HG22	2.19	0.41
1:A:380:TYR:HD1	3:L:29:SER:O	2.03	0.41
3:L:182:LEU:HD12	3:L:186:GLN:HB2	2.01	0.41

*Continued on next page...*

Continued from previous page...

Atom-1	Atom-2	Interatomic distance (Å)	Clash overlap (Å)
5:B:140:PRO:HD2	5:B:197:HIS:HE1	1.85	0.41
3:L:153:ASP:OD1	3:L:192:SER:N	2.53	0.41
5:B:169:ASP:O	5:B:171:THR:HG23	2.21	0.41
1:A:394:ASN:HA	1:A:524:VAL:HG21	2.03	0.41
3:L:7:PRO:HA	3:L:8:PRO:HD3	1.99	0.41
5:B:33:LEU:HD22	5:B:71:PHE:CG	2.56	0.41
2:H:98:LEU:O	2:H:107:ASP:N	2.54	0.40
3:L:153:ASP:OD2	3:L:191:ARG:N	2.45	0.40
4:C:25:LEU:HD12	4:C:26:VAL:N	2.36	0.40
1:A:443:SER:O	5:B:32:TRP:CH2	2.70	0.40
1:A:497:PHE:CE2	1:A:507:PRO:HB3	2.56	0.40
3:L:57:ILE:HD13	3:L:57:ILE:HA	1.94	0.40
5:B:135:LEU:HD13	5:B:174:LEU:HD22	2.02	0.40

There are no symmetry-related clashes.

## 5.3 Torsion angles

### 5.3.1 Protein backbone

In the following table, the Percentiles column shows the percent Ramachandran outliers of the chain as a percentile score with respect to all PDB entries followed by that with respect to all EM entries.

The Analysed column shows the number of residues for which the backbone conformation was analysed, and the total number of residues.

Mol	Chain	Analysed	Favoured	Allowed	Outliers	Percentiles	
1	A	192/1273 (15%)	182 (95%)	10 (5%)	0	100	100
2	H	207/219 (94%)	199 (96%)	8 (4%)	0	100	100
3	L	211/214 (99%)	197 (93%)	13 (6%)	1 (0%)	25	56
4	C	225/227 (99%)	211 (94%)	14 (6%)	0	100	100
5	B	203/205 (99%)	190 (94%)	13 (6%)	0	100	100
All	All	1038/2138 (49%)	979 (94%)	58 (6%)	1 (0%)	50	76

All (1) Ramachandran outliers are listed below:

Mol	Chain	Res	Type
3	L	154	SER

### 5.3.2 Protein sidechains ⓘ

In the following table, the Percentiles column shows the percent sidechain outliers of the chain as a percentile score with respect to all PDB entries followed by that with respect to all EM entries.

The Analysed column shows the number of residues for which the sidechain conformation was analysed, and the total number of residues.

Mol	Chain	Analysed	Rotameric	Outliers	Percentiles	
1	A	167/1112 (15%)	167 (100%)	0	100	100
2	H	176/182 (97%)	176 (100%)	0	100	100
3	L	180/181 (99%)	179 (99%)	1 (1%)	84	90
4	C	187/187 (100%)	180 (96%)	7 (4%)	29	56
5	B	176/176 (100%)	168 (96%)	8 (4%)	23	52
All	All	886/1838 (48%)	870 (98%)	16 (2%)	54	74

All (16) residues with a non-rotameric sidechain are listed below:

Mol	Chain	Res	Type
3	L	168	LYS
4	C	26	VAL
4	C	32	LEU
4	C	35	SER
4	C	179	THR
4	C	211	THR
4	C	217	LEU
4	C	229	LYS
5	B	5	THR
5	B	10	SER
5	B	14	SER
5	B	45	LYS
5	B	89	GLN
5	B	104	GLU
5	B	186	GLU
5	B	187	LYS

Sometimes sidechains can be flipped to improve hydrogen bonding and reduce clashes. All (7) such sidechains are listed below:

Mol	Chain	Res	Type
3	L	25	ASN
3	L	110	GLN

*Continued on next page...*

*Continued from previous page...*

Mol	Chain	Res	Type
3	L	171	ASN
3	L	186	GLN
5	B	89	GLN
5	B	123	GLN
5	B	154	GLN

### 5.3.3 RNA [i](#)

There are no RNA molecules in this entry.

## 5.4 Non-standard residues in protein, DNA, RNA chains [i](#)

There are no non-standard protein/DNA/RNA residues in this entry.

## 5.5 Carbohydrates [i](#)

There are no oligosaccharides in this entry.

## 5.6 Ligand geometry [i](#)

2 ligands are modelled in this entry.

In the following table, the Counts columns list the number of bonds (or angles) for which Mogul statistics could be retrieved, the number of bonds (or angles) that are observed in the model and the number of bonds (or angles) that are defined in the Chemical Component Dictionary. The Link column lists molecule types, if any, to which the group is linked. The Z score for a bond length (or angle) is the number of standard deviations the observed value is removed from the expected value. A bond length (or angle) with  $|Z| > 2$  is considered an outlier worth inspection. RMSZ is the root-mean-square of all Z scores of the bond lengths (or angles).

Mol	Type	Chain	Res	Link	Bond lengths			Bond angles		
					Counts	RMSZ	$\# Z  > 2$	Counts	RMSZ	$\# Z  > 2$
6	NAG	A	1301	1	14,14,15	0.22	0	17,19,21	0.42	0
7	MES	H	301	-	12,12,12	2.28	1 (8%)	14,16,16	2.07	7 (50%)

In the following table, the Chirals column lists the number of chiral outliers, the number of chiral centers analysed, the number of these observed in the model and the number defined in the Chemical Component Dictionary. Similar counts are reported in the Torsion and Rings columns. '-' means no outliers of that kind were identified.

Mol	Type	Chain	Res	Link	Chirals	Torsions	Rings
6	NAG	A	1301	1	-	0/6/23/26	0/1/1/1
7	MES	H	301	-	-	0/6/14/14	0/1/1/1

All (1) bond length outliers are listed below:

Mol	Chain	Res	Type	Atoms	Z	Observed(Å)	Ideal(Å)
7	H	301	MES	C8-S	-7.63	1.66	1.77

All (7) bond angle outliers are listed below:

Mol	Chain	Res	Type	Atoms	Z	Observed(°)	Ideal(°)
7	H	301	MES	C5-N4-C3	3.99	117.80	108.83
7	H	301	MES	C6-C5-N4	-3.19	105.27	110.10
7	H	301	MES	O3S-S-C8	2.51	109.82	105.77
7	H	301	MES	C7-N4-C5	2.45	117.49	111.23
7	H	301	MES	C7-N4-C3	2.26	117.02	111.23
7	H	301	MES	O1S-S-C8	2.10	109.45	106.92
7	H	301	MES	O2S-S-C8	2.08	109.42	106.92

There are no chirality outliers.

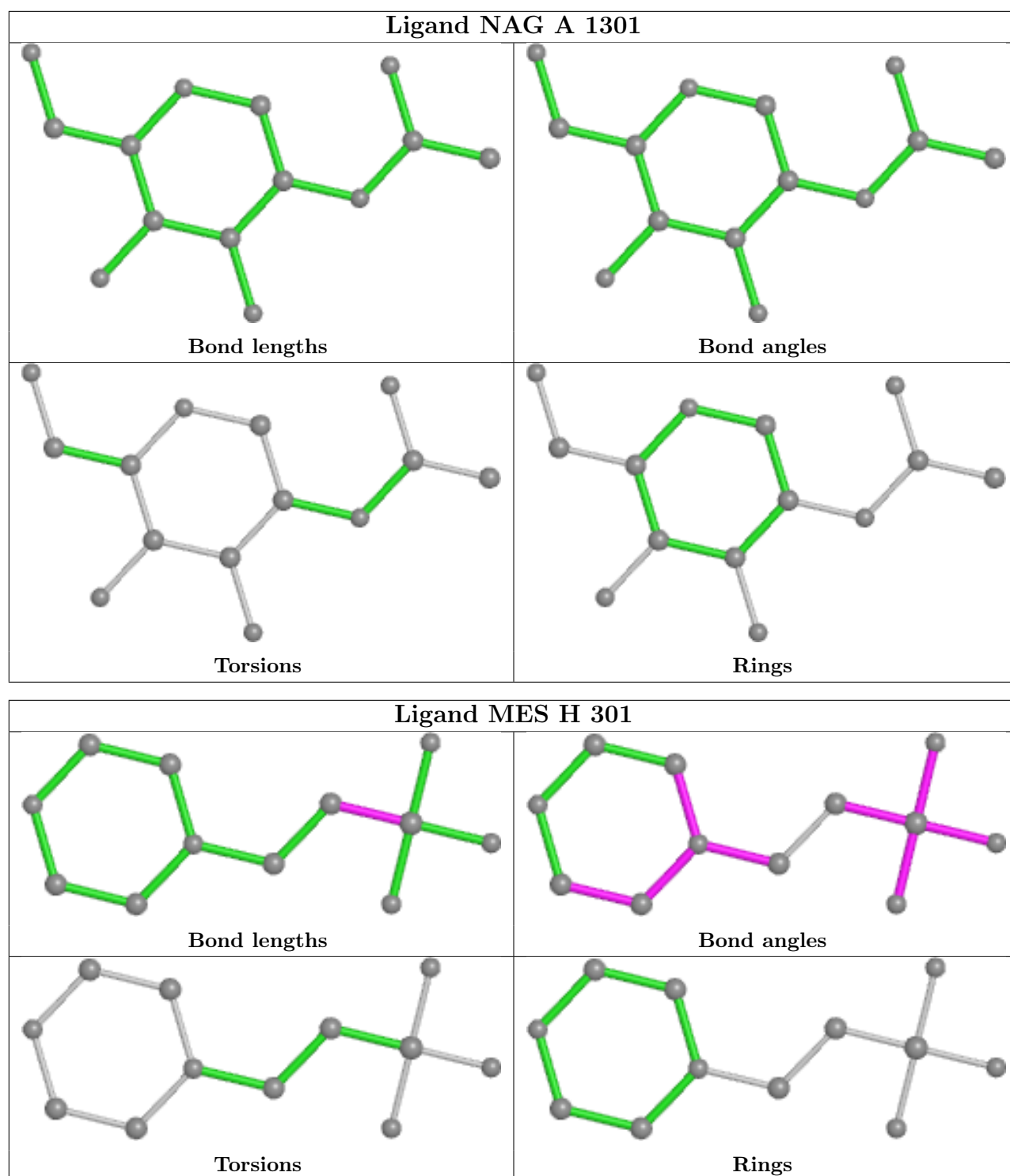
There are no torsion outliers.

There are no ring outliers.

1 monomer is involved in 2 short contacts:

Mol	Chain	Res	Type	Clashes	Symm-Clashes
7	H	301	MES	2	0

The following is a two-dimensional graphical depiction of Mogul quality analysis of bond lengths, bond angles, torsion angles, and ring geometry for all instances of the Ligand of Interest. In addition, ligands with molecular weight > 250 and outliers as shown on the validation Tables will also be included. For torsion angles, if less than 5% of the Mogul distribution of torsion angles is within 10 degrees of the torsion angle in question, then that torsion angle is considered an outlier. Any bond that is central to one or more torsion angles identified as an outlier by Mogul will be highlighted in the graph. For rings, the root-mean-square deviation (RMSD) between the ring in question and similar rings identified by Mogul is calculated over all ring torsion angles. If the average RMSD is greater than 60 degrees and the minimal RMSD between the ring in question and any Mogul-identified rings is also greater than 60 degrees, then that ring is considered an outlier. The outliers are highlighted in purple. The color gray indicates Mogul did not find sufficient equivalents in the CSD to analyse the geometry.



## 5.7 Other polymers ⓘ

There are no such residues in this entry.

## 5.8 Polymer linkage issues ⓘ

There are no chain breaks in this entry.

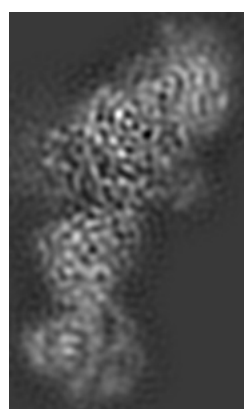
## 6 Map visualisation [i](#)

This section contains visualisations of the EMDB entry EMD-31434. These allow visual inspection of the internal detail of the map and identification of artifacts.

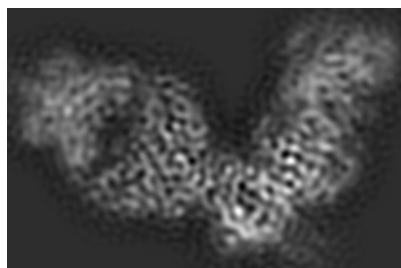
No raw map or half-maps were deposited for this entry and therefore no images, graphs, etc. pertaining to the raw map can be shown.

### 6.1 Orthogonal projections [i](#)

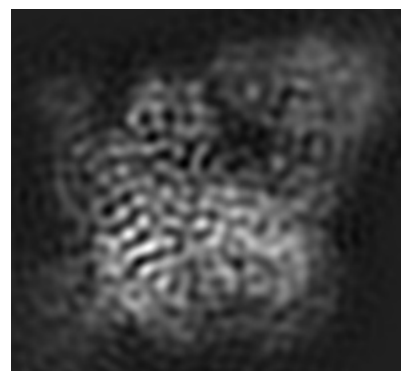
#### 6.1.1 Primary map



X



Y

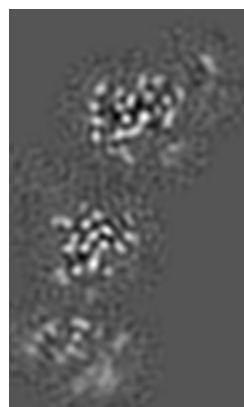


Z

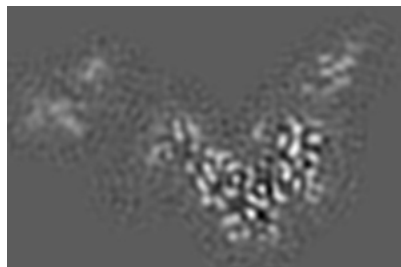
The images above show the map projected in three orthogonal directions.

### 6.2 Central slices [i](#)

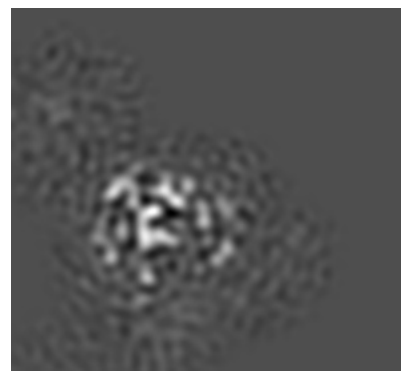
#### 6.2.1 Primary map



X Index: 56



Y Index: 51

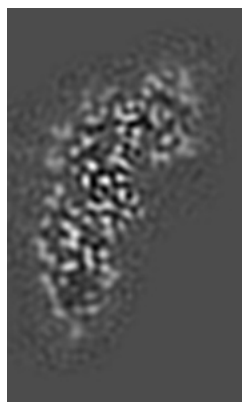


Z Index: 85

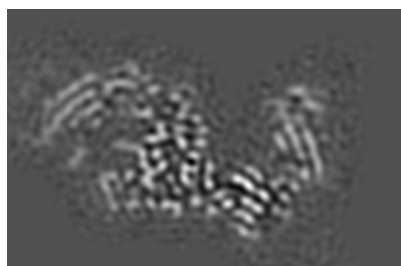
The images above show central slices of the map in three orthogonal directions.

## 6.3 Largest variance slices [i](#)

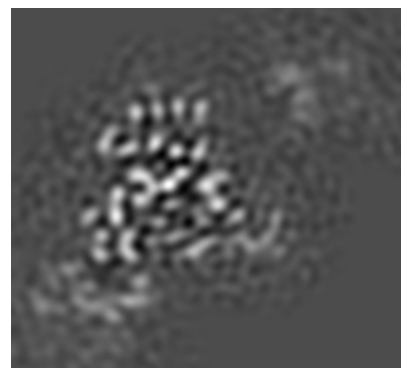
### 6.3.1 Primary map



X Index: 36



Y Index: 36

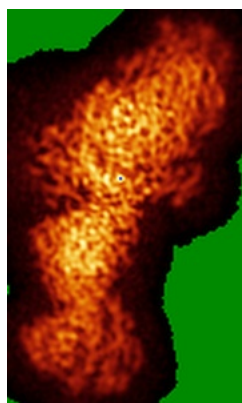


Z Index: 118

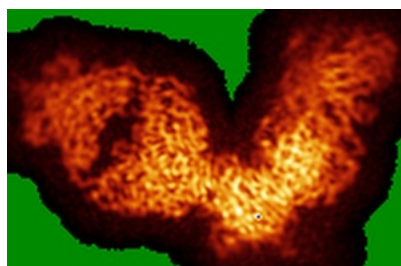
The images above show the largest variance slices of the map in three orthogonal directions.

## 6.4 Orthogonal standard-deviation projections (False-color) [i](#)

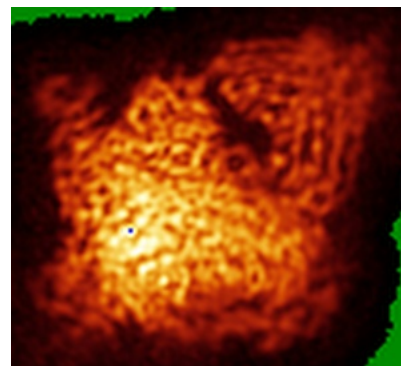
### 6.4.1 Primary map



X



Y

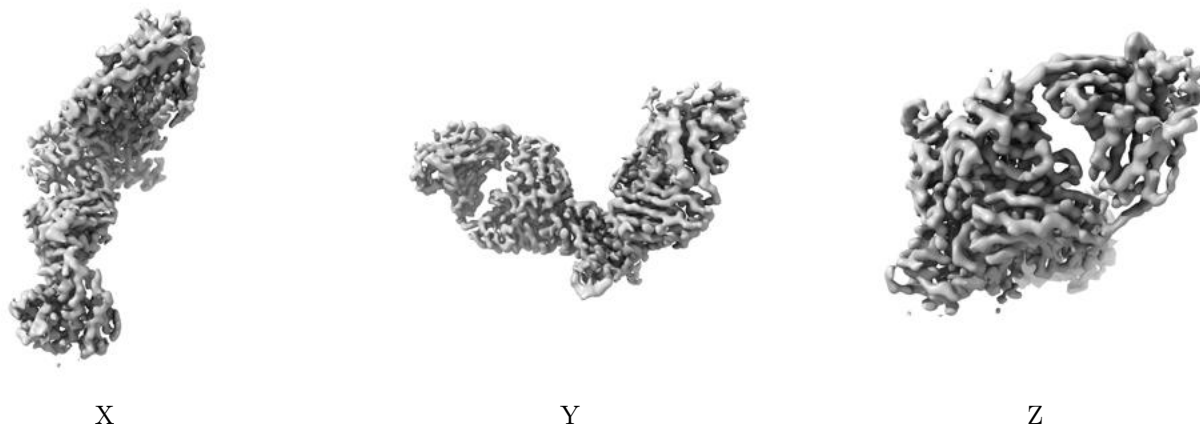


Z

The images above show the map standard deviation projections with false color in three orthogonal directions. Minimum values are shown in green, max in blue, and dark to light orange shades represent small to large values respectively.

## 6.5 Orthogonal surface views [i](#)

### 6.5.1 Primary map



The images above show the 3D surface view of the map at the recommended contour level 0.014. These images, in conjunction with the slice images, may facilitate assessment of whether an appropriate contour level has been provided.

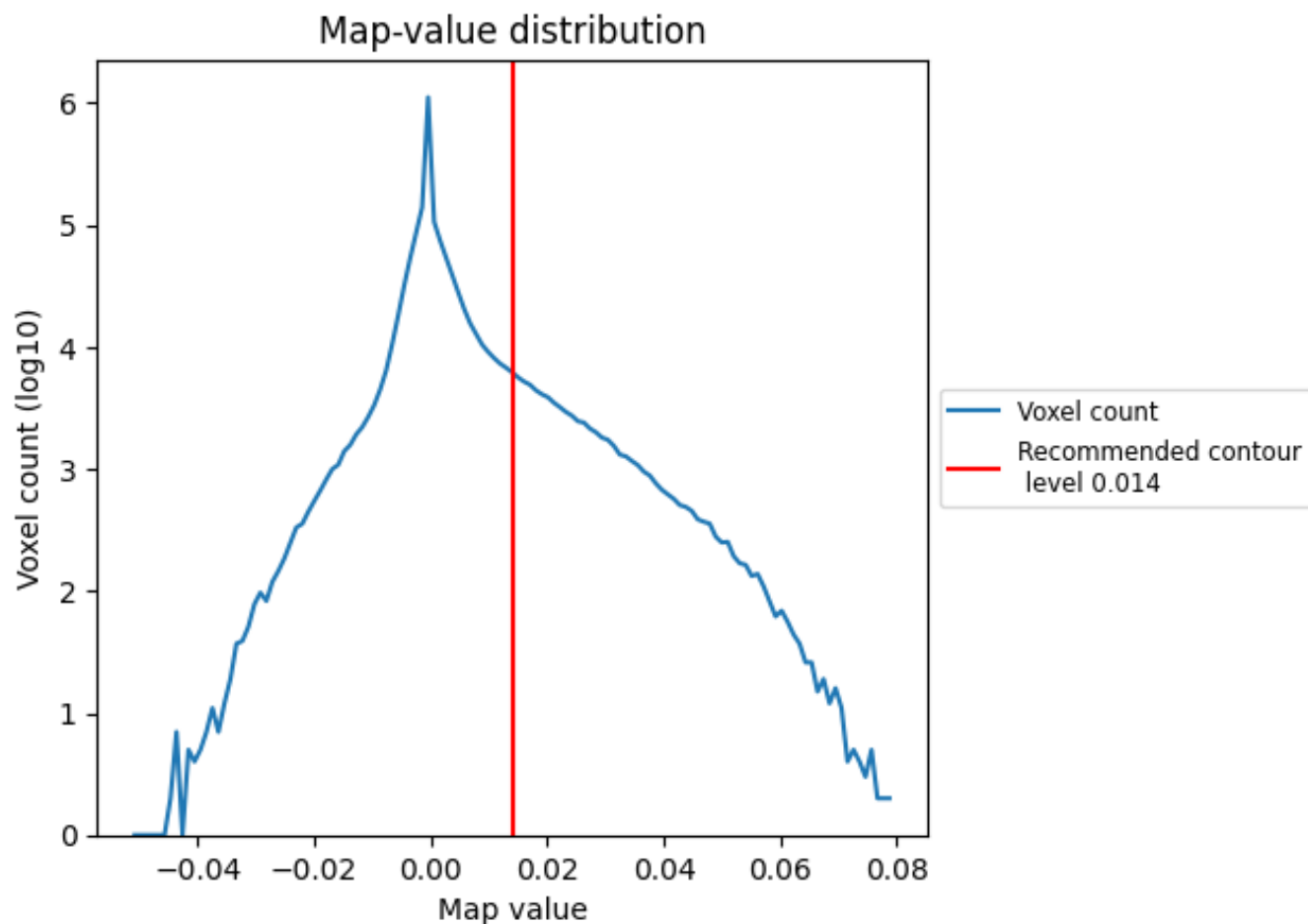
## 6.6 Mask visualisation [i](#)

This section was not generated. No masks/segmentation were deposited.

## 7 Map analysis [i](#)

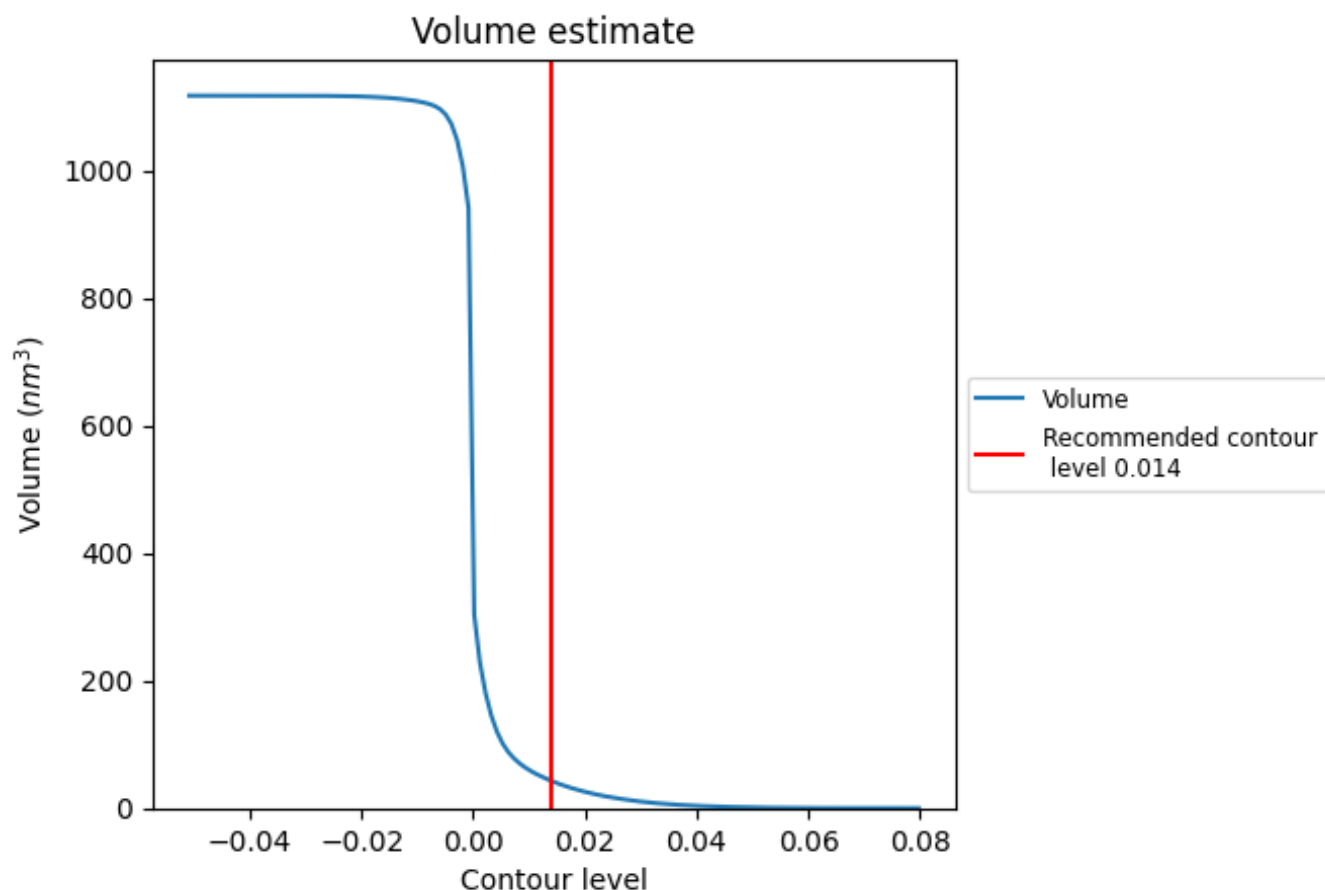
This section contains the results of statistical analysis of the map.

### 7.1 Map-value distribution [i](#)



The map-value distribution is plotted in 128 intervals along the x-axis. The y-axis is logarithmic. A spike in this graph at zero usually indicates that the volume has been masked.

## 7.2 Volume estimate [i](#)



The volume at the recommended contour level is 43 nm<sup>3</sup>; this corresponds to an approximate mass of 39 kDa.

The volume estimate graph shows how the enclosed volume varies with the contour level. The recommended contour level is shown as a vertical line and the intersection between the line and the curve gives the volume of the enclosed surface at the given level.

## 7.3 Rotationally averaged power spectrum [i](#)

This section was not generated. The rotationally averaged power spectrum is only generated for cubic maps.

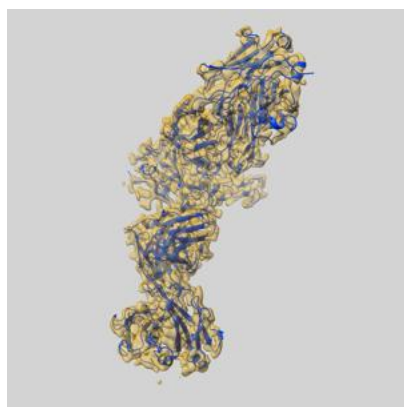
## 8 Fourier-Shell correlation ⓘ

This section was not generated. No FSC curve or half-maps provided.

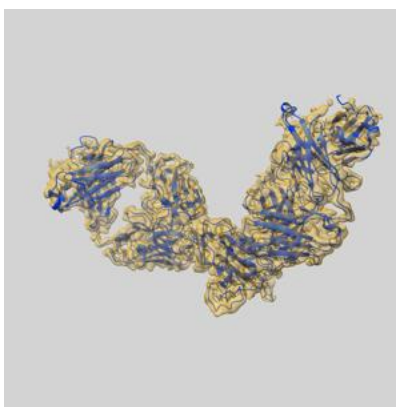
## 9 Map-model fit [i](#)

This section contains information regarding the fit between EMDB map EMD-31434 and PDB model 7F3Q. Per-residue inclusion information can be found in section [3](#) on page [5](#).

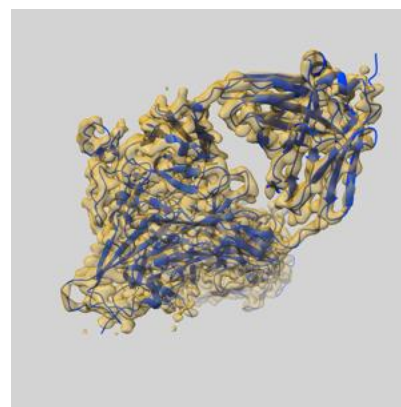
### 9.1 Map-model overlay [i](#)



X



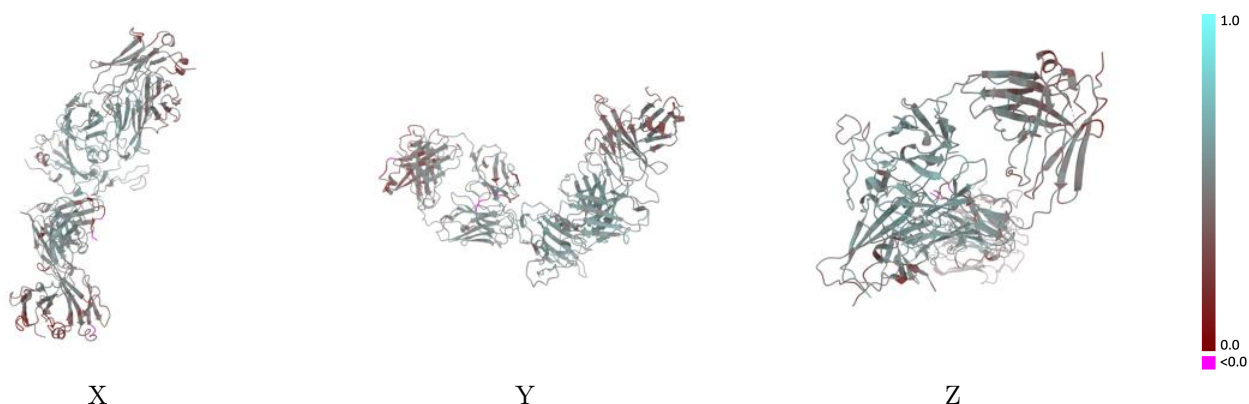
Y



Z

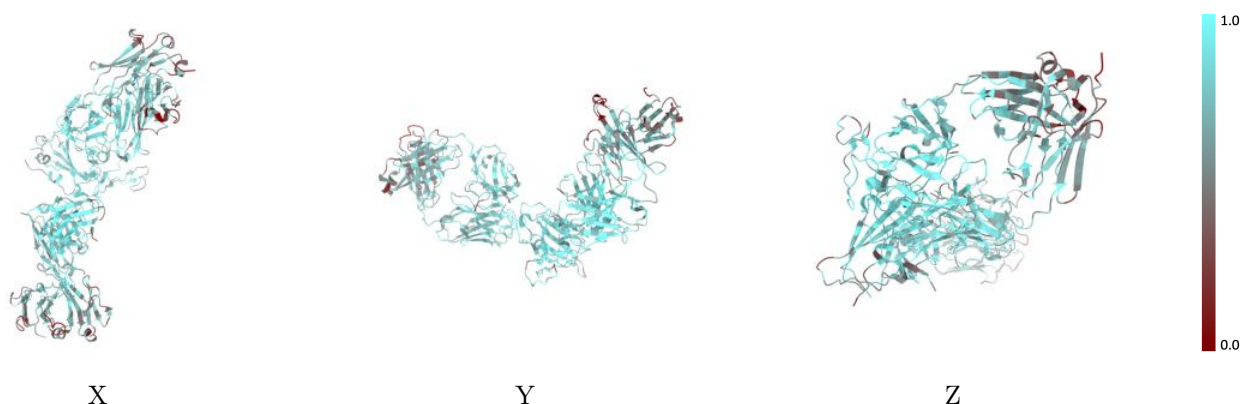
The images above show the 3D surface view of the map at the recommended contour level 0.014 at 50% transparency in yellow overlaid with a ribbon representation of the model coloured in blue. These images allow for the visual assessment of the quality of fit between the atomic model and the map.

## 9.2 Q-score mapped to coordinate model [i](#)



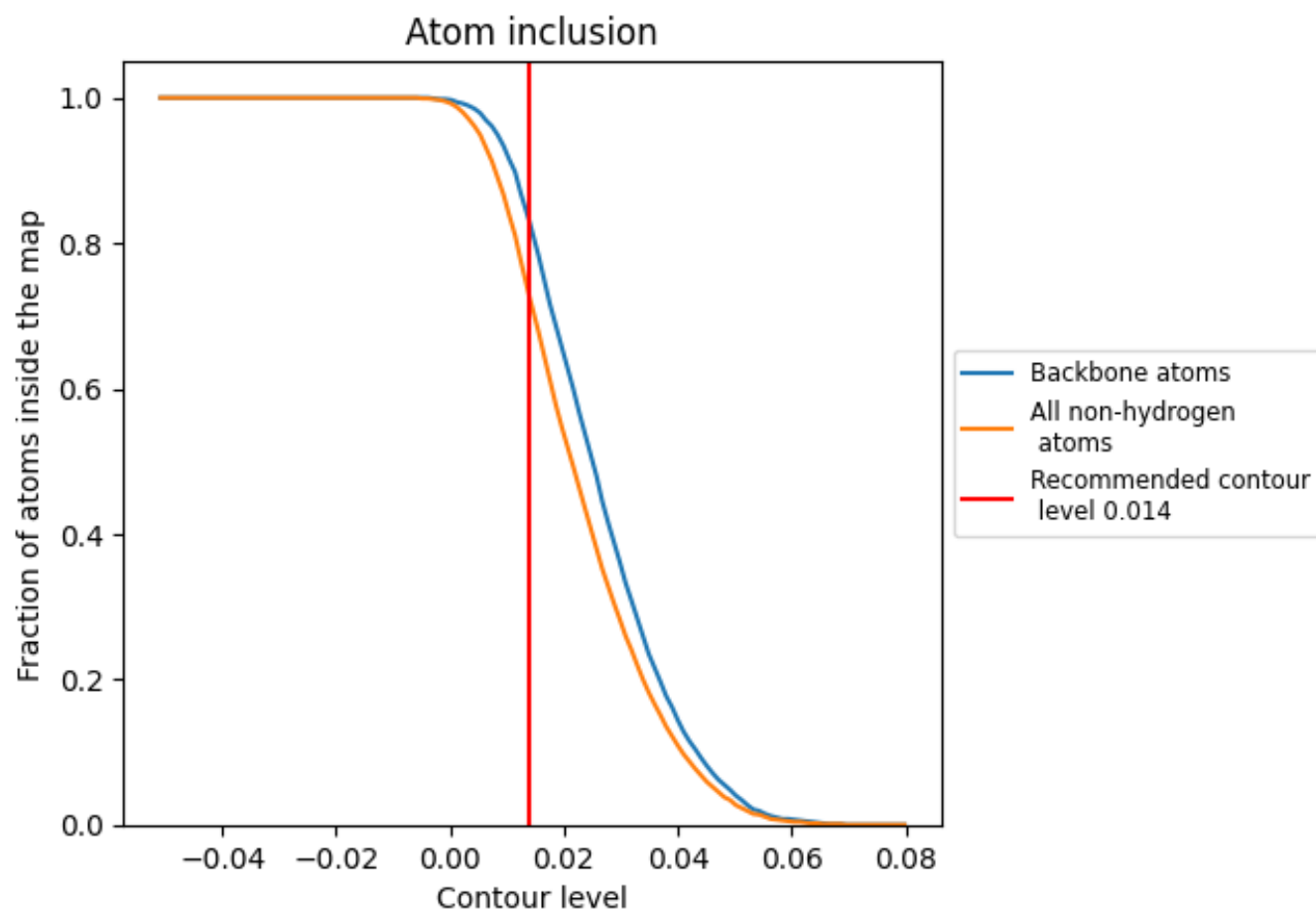
The images above show the model with each residue coloured according to its Q-score. This shows their resolvability in the map with higher Q-score values reflecting better resolvability. Please note: Q-score is calculating the resolvability of atoms, and thus high values are only expected at resolutions at which atoms can be resolved. Low Q-score values may therefore be expected for many entries.

## 9.3 Atom inclusion mapped to coordinate model [i](#)



The images above show the model with each residue coloured according to its atom inclusion. This shows to what extent they are inside the map at the recommended contour level (0.014).

## 9.4 Atom inclusion [i](#)



At the recommended contour level, 83% of all backbone atoms, 72% of all non-hydrogen atoms, are inside the map.

9.5 Map-model fit summary ⓘ

The table lists the average atom inclusion at the recommended contour level (0.014) and Q-score for the entire model and for each chain.

Chain	Atom inclusion	Q-score
All	<div></div> 0.7240	<div></div> 0.4820
A	<div></div> 0.7770	<div></div> 0.5180
B	<div></div> 0.6980	<div></div> 0.4300
C	<div></div> 0.7190	<div></div> 0.4630
H	<div></div> 0.7310	<div></div> 0.5100
L	<div></div> 0.6980	<div></div> 0.4910

