



Full wwPDB X-ray Structure Validation Report ⓘ

Jun 22, 2024 – 06:20 PM EDT

PDB ID : 6F16
Title : GLIC mutant H277Q
Authors : Hu, H.D.; Delarue, M.
Deposited on : 2017-11-21
Resolution : 2.60 Å(reported)

This is a Full wwPDB X-ray Structure Validation Report for a publicly released PDB entry.

We welcome your comments at validation@mail.wwpdb.org

A user guide is available at

<https://www.wwpdb.org/validation/2017/XrayValidationReportHelp>

with specific help available everywhere you see the ⓘ symbol.

The types of validation reports are described at

<http://www.wwpdb.org/validation/2017/FAQs#types>.

The following versions of software and data (see [references ⓘ](#)) were used in the production of this report:

MolProbity	:	4.02b-467
Mogul	:	2022.3.0, CSD as543be (2022)
Xtriage (Phenix)	:	1.20.1
EDS	:	2.37.1
buster-report	:	1.1.7 (2018)
Percentile statistics	:	20191225.v01 (using entries in the PDB archive December 25th 2019)
Refmac	:	5.8.0158
CCP4	:	7.0.044 (Gargrove)
Ideal geometry (proteins)	:	Engh & Huber (2001)
Ideal geometry (DNA, RNA)	:	Parkinson et al. (1996)
Validation Pipeline (wwPDB-VP)	:	2.37.1

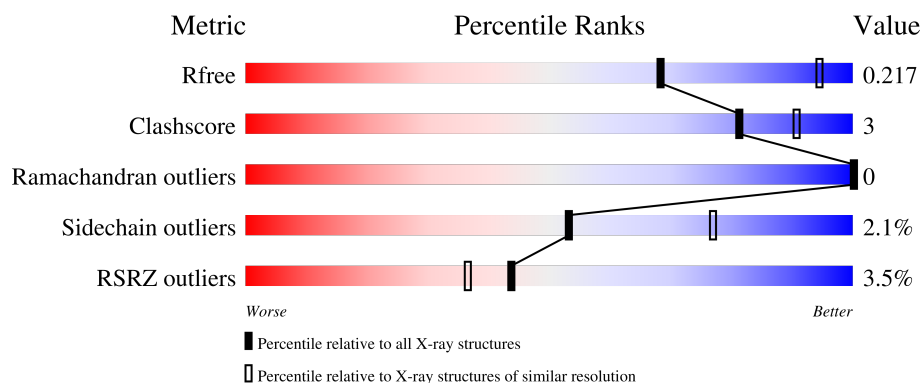
1 Overall quality at a glance

The following experimental techniques were used to determine the structure:

X-RAY DIFFRACTION

The reported resolution of this entry is 2.60 Å.

Percentile scores (ranging between 0-100) for global validation metrics of the entry are shown in the following graphic. The table shows the number of entries on which the scores are based.



Metric	Whole archive (#Entries)	Similar resolution (#Entries, resolution range(Å))
R_{free}	130704	3163 (2.60-2.60)
Clashscore	141614	3518 (2.60-2.60)
Ramachandran outliers	138981	3455 (2.60-2.60)
Sidechain outliers	138945	3455 (2.60-2.60)
RSRZ outliers	127900	3104 (2.60-2.60)

The table below summarises the geometric issues observed across the polymeric chains and their fit to the electron density. The red, orange, yellow and green segments of the lower bar indicate the fraction of residues that contain outliers for ≥ 3 , 2, 1 and 0 types of geometric quality criteria respectively. A grey segment represents the fraction of residues that are not modelled. The numeric value for each fraction is indicated below the corresponding segment, with a dot representing fractions $\leq 5\%$. The upper red bar (where present) indicates the fraction of residues that have poor fit to the electron density. The numeric value is given above the bar.

Mol	Chain	Length	Quality of chain
1	A	317	<div> <div>4%</div> <div>92%</div> <div>6%</div> </div>
1	B	317	<div> <div>3%</div> <div>92%</div> <div>6%</div> </div>
1	C	317	<div> <div>3%</div> <div>91%</div> <div>7%</div> </div>
1	D	317	<div> <div>3%</div> <div>91%</div> <div>7%</div> </div>
1	E	317	<div> <div>4%</div> <div>91%</div> <div>7%</div> </div>

2 Entry composition

There are 7 unique types of molecules in this entry. The entry contains 13162 atoms, of which 0 are hydrogens and 0 are deuteriums.

In the tables below, the ZeroOcc column contains the number of atoms modelled with zero occupancy, the AltConf column contains the number of residues with at least one atom in alternate conformation and the Trace column contains the number of residues modelled with at most 2 atoms.

- Molecule 1 is a protein called Proton-gated ion channel.

Mol	Chain	Residues	Atoms					ZeroOcc	AltConf	Trace
1	A	311	Total	C	N	O	S	0	2	0
			2535	1671	404	456	4			
1	B	311	Total	C	N	O	S	0	2	0
			2535	1671	404	456	4			
1	C	311	Total	C	N	O	S	0	2	0
			2535	1671	404	456	4			
1	D	311	Total	C	N	O	S	0	2	0
			2535	1671	404	456	4			
1	E	311	Total	C	N	O	S	0	2	0
			2535	1671	404	456	4			

There are 5 discrepancies between the modelled and reference sequences:

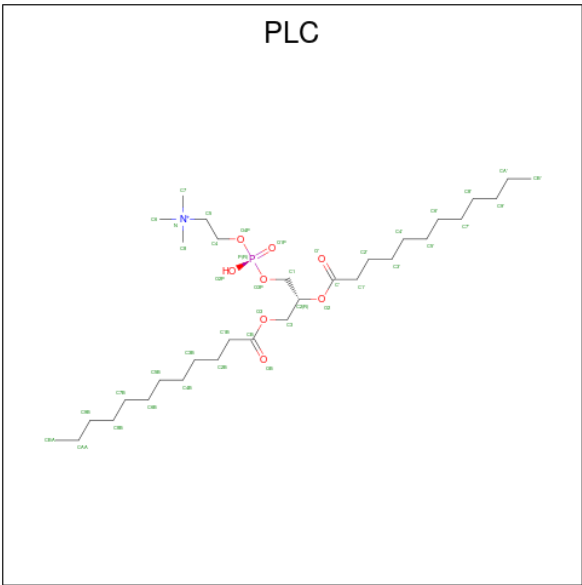
Chain	Residue	Modelled	Actual	Comment	Reference
A	277	GLN	HIS	engineered mutation	UNP Q7NDN8
B	277	GLN	HIS	engineered mutation	UNP Q7NDN8
C	277	GLN	HIS	engineered mutation	UNP Q7NDN8
D	277	GLN	HIS	engineered mutation	UNP Q7NDN8
E	277	GLN	HIS	engineered mutation	UNP Q7NDN8

- Molecule 2 is ACETATE ION (three-letter code: ACT) (formula: C₂H₃O₂).



Mol	Chain	Residues	Atoms			ZeroOcc	AltConf
2	A	1	Total	C	O	0	0
			4	2	2		
2	A	1	Total	C	O	0	0
			4	2	2		
2	A	1	Total	C	O	0	0
			4	2	2		
2	B	1	Total	C	O	0	0
			4	2	2		
2	C	1	Total	C	O	0	0
			4	2	2		
2	C	1	Total	C	O	0	0
			4	2	2		
2	C	1	Total	C	O	0	0
			4	2	2		
2	D	1	Total	C	O	0	0
			4	2	2		
2	D	1	Total	C	O	0	0
			4	2	2		
2	E	1	Total	C	O	0	0
			4	2	2		

- Molecule 3 is DIUNDECYL PHOSPHATIDYL CHOLINE (three-letter code: PLC) (formula: C₃₂H₆₅NO₈P).



Mol	Chain	Residues	Atoms	ZeroOcc	AltConf
3	A	1	Total C N O P 34 24 1 8 1	0	0
3	B	1	Total C 24 24	0	0
3	B	1	Total C N O P 34 24 1 8 1	0	0
3	C	1	Total C 24 24	0	0
3	C	1	Total C N O P 34 24 1 8 1	0	0
3	D	1	Total C 24 24	0	0
3	D	1	Total C N O P 34 24 1 8 1	0	0
3	E	1	Total C 24 24	0	0
3	E	1	Total C N O P 34 24 1 8 1	0	0
3	E	1	Total C 24 24	0	0

- Molecule 4 is CHLORIDE ION (three-letter code: CL) (formula: Cl).

Mol	Chain	Residues	Atoms	ZeroOcc	AltConf
4	A	3	Total Cl 3 3	0	0
4	B	1	Total Cl 1 1	0	0

Continued on next page...

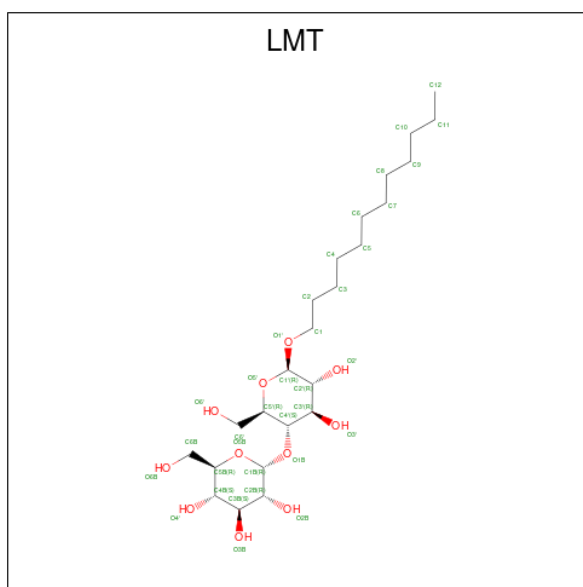
Continued from previous page...

Mol	Chain	Residues	Atoms	ZeroOcc	AltConf
4	C	1	Total Cl 1 1	0	0
4	D	1	Total Cl 1 1	0	0
4	E	1	Total Cl 1 1	0	0

- Molecule 5 is SODIUM ION (three-letter code: NA) (formula: Na).

Mol	Chain	Residues	Atoms	ZeroOcc	AltConf
5	A	1	Total Na 1 1	0	0
5	B	1	Total Na 1 1	0	0
5	C	2	Total Na 2 2	0	0
5	D	1	Total Na 1 1	0	0
5	E	1	Total Na 1 1	0	0

- Molecule 6 is DODECYL-BETA-D-MALTOSE (three-letter code: LMT) (formula: $C_{24}H_{46}O_{11}$).



Mol	Chain	Residues	Atoms	ZeroOcc	AltConf
6	A	1	Total C 12 12	0	0

Continued on next page...

Continued from previous page...

Mol	Chain	Residues	Atoms	ZeroOcc	AltConf
6	A	1	Total C 12 12	0	0
6	B	1	Total C 12 12	0	0
6	C	1	Total C 12 12	0	0
6	D	1	Total C 12 12	0	0
6	E	1	Total C 12 12	0	0

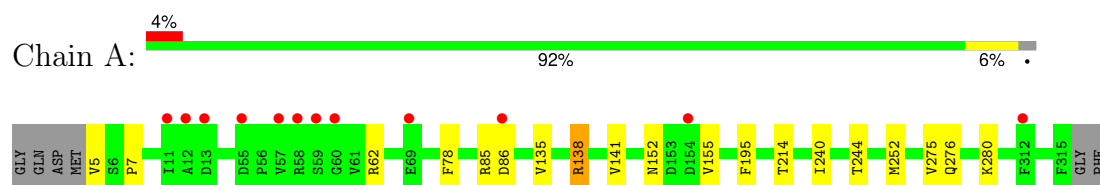
- Molecule 7 is water.

Mol	Chain	Residues	Atoms	ZeroOcc	AltConf
7	A	12	Total O 12 12	0	0
7	B	19	Total O 19 19	0	0
7	C	16	Total O 16 16	0	0
7	D	16	Total O 16 16	0	0
7	E	9	Total O 9 9	0	0

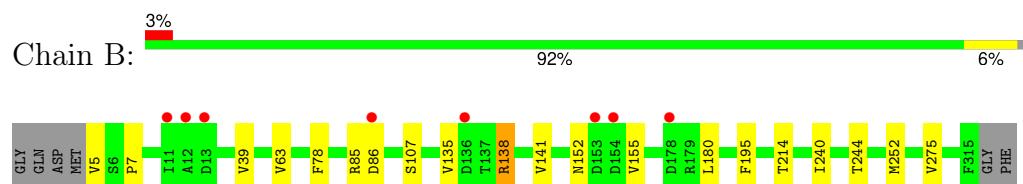
3 Residue-property plots

These plots are drawn for all protein, RNA, DNA and oligosaccharide chains in the entry. The first graphic for a chain summarises the proportions of the various outlier classes displayed in the second graphic. The second graphic shows the sequence view annotated by issues in geometry and electron density. Residues are color-coded according to the number of geometric quality criteria for which they contain at least one outlier: green = 0, yellow = 1, orange = 2 and red = 3 or more. A red dot above a residue indicates a poor fit to the electron density ($RSRZ > 2$). Stretches of 2 or more consecutive residues without any outlier are shown as a green connector. Residues present in the sample, but not in the model, are shown in grey.

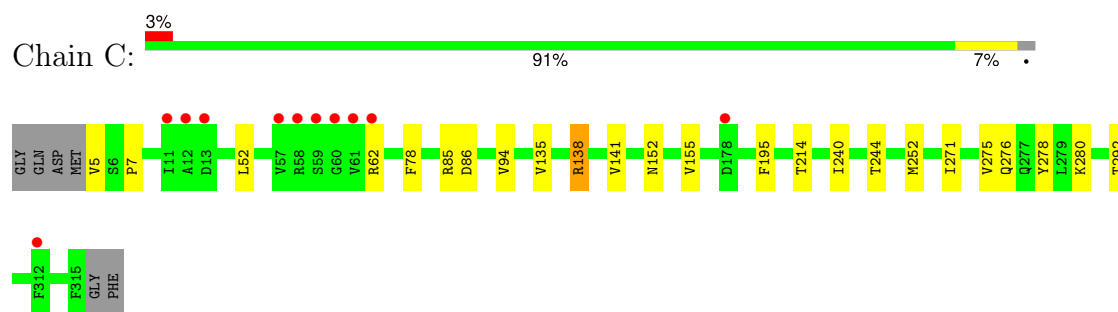
- Molecule 1: Proton-gated ion channel



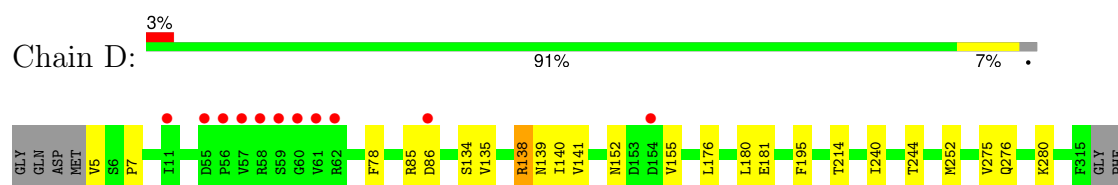
- Molecule 1: Proton-gated ion channel



- Molecule 1: Proton-gated ion channel

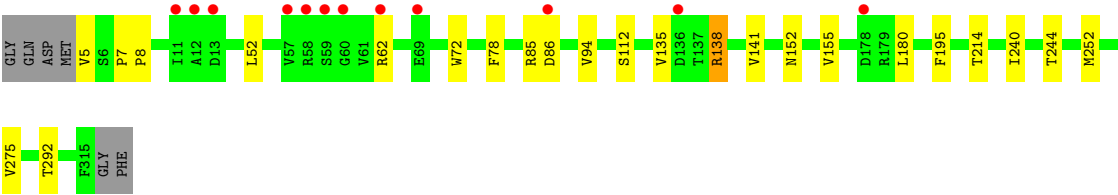


- Molecule 1: Proton-gated ion channel



- Molecule 1: Proton-gated ion channel





4 Data and refinement statistics

Property	Value	Source
Space group	C 1 2 1	Depositor
Cell constants a, b, c, α , β , γ	182.70Å 132.78Å 161.55Å 90.00° 102.96° 90.00°	Depositor
Resolution (Å)	21.30 – 2.60 21.29 – 2.60	Depositor EDS
% Data completeness (in resolution range)	82.7 (21.30-2.60) 82.7 (21.29-2.60)	Depositor EDS
R_{merge}	(Not available)	Depositor
R_{sym}	(Not available)	Depositor
$\langle I/\sigma(I) \rangle$ ¹	2.35 (at 2.60Å)	Xtriage
Refinement program	BUSTER 2.10.2	Depositor
R, R_{free}	0.201 , 0.219 0.203 , 0.217	Depositor DCC
R_{free} test set	4691 reflections (4.92%)	wwPDB-VP
Wilson B-factor (Å ²)	41.7	Xtriage
Anisotropy	0.047	Xtriage
Bulk solvent k_{sol} (e/Å ³), B_{sol} (Å ²)	0.34 , 46.0	EDS
L-test for twinning ²	$\langle L \rangle = 0.50$, $\langle L^2 \rangle = 0.33$	Xtriage
Estimated twinning fraction	No twinning to report.	Xtriage
F_o, F_c correlation	0.93	EDS
Total number of atoms	13162	wwPDB-VP
Average B, all atoms (Å ²)	42.0	wwPDB-VP

Xtriage's analysis on translational NCS is as follows: *The largest off-origin peak in the Patterson function is 3.97% of the height of the origin peak. No significant pseudotranslation is detected.*

¹Intensities estimated from amplitudes.

²Theoretical values of $\langle |L| \rangle$, $\langle L^2 \rangle$ for acentric reflections are 0.5, 0.333 respectively for untwinned datasets, and 0.375, 0.2 for perfectly twinned datasets.

5 Model quality [i](#)

5.1 Standard geometry [i](#)

Bond lengths and bond angles in the following residue types are not validated in this section: ACT, CL, PLC, LMT, NA

The Z score for a bond length (or angle) is the number of standard deviations the observed value is removed from the expected value. A bond length (or angle) with $|Z| > 5$ is considered an outlier worth inspection. RMSZ is the root-mean-square of all Z scores of the bond lengths (or angles).

Mol	Chain	Bond lengths		Bond angles	
		RMSZ	# Z >5	RMSZ	# Z >5
1	A	0.49	0/2607	0.68	0/3561
1	B	0.50	0/2608	0.69	0/3564
1	C	0.49	0/2607	0.69	0/3561
1	D	0.49	0/2607	0.69	0/3561
1	E	0.49	0/2607	0.69	0/3561
All	All	0.49	0/13036	0.69	0/17808

There are no bond length outliers.

There are no bond angle outliers.

There are no chirality outliers.

There are no planarity outliers.

5.2 Too-close contacts [i](#)

In the following table, the Non-H and H(model) columns list the number of non-hydrogen atoms and hydrogen atoms in the chain respectively. The H(added) column lists the number of hydrogen atoms added and optimized by MolProbity. The Clashes column lists the number of clashes within the asymmetric unit, whereas Symm-Clashes lists symmetry-related clashes.

Mol	Chain	Non-H	H(model)	H(added)	Clashes	Symm-Clashes
1	A	2535	0	2562	13	0
1	B	2535	0	2563	12	0
1	C	2535	0	2562	14	0
1	D	2535	0	2562	16	0
1	E	2535	0	2562	14	0
2	A	12	0	9	0	0
2	B	4	0	3	0	0
2	C	12	0	9	0	0

Continued on next page...

Continued from previous page...

Mol	Chain	Non-H	H(model)	H(added)	Clashes	Symm-Clashes
2	D	8	0	6	0	0
2	E	4	0	3	0	0
3	A	34	0	42	1	0
3	B	58	0	88	3	0
3	C	58	0	88	5	0
3	D	58	0	88	3	0
3	E	82	0	134	5	0
4	A	3	0	0	0	0
4	B	1	0	0	0	0
4	C	1	0	0	0	0
4	D	1	0	0	0	0
4	E	1	0	0	0	0
5	A	1	0	0	0	0
5	B	1	0	0	0	0
5	C	2	0	0	0	0
5	D	1	0	0	0	0
5	E	1	0	0	0	0
6	A	24	0	46	2	0
6	B	12	0	23	0	0
6	C	12	0	23	0	0
6	D	12	0	23	0	0
6	E	12	0	23	1	0
7	A	12	0	0	0	0
7	B	19	0	0	0	0
7	C	16	0	0	0	0
7	D	16	0	0	0	0
7	E	9	0	0	0	0
All	All	13162	0	13419	68	0

The all-atom clashscore is defined as the number of clashes found per 1000 atoms (including hydrogen atoms). The all-atom clashscore for this structure is 3.

All (68) close contacts within the same asymmetric unit are listed below, sorted by their clash magnitude.

Atom-1	Atom-2	Interatomic distance (Å)	Clash overlap (Å)
1:D:139:ASN:ND2	1:D:180:LEU:HD13	1.88	0.88
1:D:139:ASN:HD22	1:D:180:LEU:HD13	1.40	0.86
1:B:78:PHE:CE2	1:B:85:ARG:HD3	2.23	0.74
1:B:78:PHE:HE2	1:B:85:ARG:HD3	1.54	0.72
1:A:78:PHE:CE2	1:A:85:ARG:HD3	2.29	0.68
1:D:78:PHE:CE2	1:D:85:ARG:HD3	2.30	0.67

Continued on next page...

Continued from previous page...

Atom-1	Atom-2	Interatomic distance (Å)	Clash overlap (Å)
1:E:78:PHE:CE2	1:E:85:ARG:HD3	2.32	0.64
1:C:78:PHE:CE2	1:C:85:ARG:HD3	2.32	0.64
1:A:275:VAL:HG22	3:E:403:PLC:H8'1	1.80	0.63
1:A:78:PHE:HE2	1:A:85:ARG:HD3	1.63	0.62
1:B:7:PRO:HG3	1:B:135:VAL:HG21	1.82	0.62
1:C:275:VAL:HG22	3:C:402:PLC:H8'1	1.83	0.61
1:A:7:PRO:HG3	1:A:135:VAL:HG21	1.82	0.60
1:D:78:PHE:HE2	1:D:85:ARG:HD3	1.66	0.59
1:E:78:PHE:HE2	1:E:85:ARG:HD3	1.67	0.59
1:D:7:PRO:HG3	1:D:135:VAL:HG21	1.84	0.59
1:D:240:ILE:O	1:D:244:THR:HG23	2.03	0.58
1:C:240:ILE:O	1:C:244:THR:HG23	2.04	0.58
1:D:152:ASN:HB3	1:D:155:VAL:HG23	1.86	0.58
1:A:152:ASN:HB3	1:A:155:VAL:HG23	1.85	0.58
1:A:240:ILE:O	1:A:244:THR:HG23	2.04	0.57
1:B:240:ILE:O	1:B:244:THR:HG23	2.04	0.57
1:E:152:ASN:HB3	1:E:155:VAL:HG23	1.85	0.57
1:B:152:ASN:HB3	1:B:155:VAL:HG23	1.86	0.57
1:C:7:PRO:HG3	1:C:135:VAL:HG21	1.85	0.57
1:C:152:ASN:HB3	1:C:155:VAL:HG23	1.86	0.57
1:E:240:ILE:O	1:E:244:THR:HG23	2.05	0.57
1:C:78:PHE:HE2	1:C:85:ARG:HD3	1.69	0.56
1:E:275:VAL:HG22	3:E:401:PLC:H8'1	1.86	0.56
1:D:275:VAL:HG22	3:D:401:PLC:H8'1	1.87	0.56
1:B:275:VAL:HG22	3:B:401:PLC:H8'1	1.89	0.55
1:E:7:PRO:HG3	1:E:135:VAL:HG21	1.89	0.54
1:A:252:MET:HE2	1:E:195:PHE:HZ	1.74	0.53
1:C:52:LEU:HB3	1:C:94:VAL:HG11	1.92	0.51
1:D:135:VAL:HG23	1:D:138:ARG:H	1.76	0.50
1:A:195:PHE:HZ	1:B:252:MET:HE2	1.77	0.49
1:A:214:THR:HG22	3:B:401:PLC:H3'2	1.94	0.49
1:C:214:THR:HG22	3:D:401:PLC:H3'2	1.95	0.49
6:A:408:LMT:H62	6:A:409:LMT:H92	1.95	0.49
1:D:195:PHE:HZ	1:E:252:MET:HE2	1.77	0.49
1:E:214:THR:HG22	3:E:403:PLC:H3'2	1.95	0.48
1:D:214:THR:HG22	3:E:401:PLC:H3'2	1.94	0.48
1:A:252:MET:HE2	1:E:195:PHE:CZ	2.49	0.48
1:B:214:THR:HG22	3:C:402:PLC:H3'2	1.96	0.48
1:E:135:VAL:HG23	1:E:138:ARG:H	1.79	0.47
1:A:135:VAL:HG23	1:A:138:ARG:H	1.78	0.47
1:D:276:GLN:O	1:D:280[A]:LYS:HG3	2.14	0.47

Continued on next page...

Continued from previous page...

Atom-1	Atom-2	Interatomic distance (Å)	Clash overlap (Å)
1:D:195:PHE:CZ	1:E:252:MET:HE2	2.50	0.47
1:A:195:PHE:CZ	1:B:252:MET:HE2	2.51	0.46
1:C:135:VAL:HG23	1:C:138:ARG:H	1.81	0.45
1:B:135:VAL:HG23	1:B:138:ARG:H	1.80	0.45
1:B:195:PHE:HZ	1:C:252:MET:HE2	1.82	0.44
1:C:276:GLN:O	1:C:280[A]:LYS:HG3	2.18	0.44
1:A:276:GLN:O	1:A:280[A]:LYS:HG3	2.18	0.44
1:B:39:VAL:O	1:B:107:SER:HA	2.18	0.43
6:A:408:LMT:H61	6:E:407:LMT:H92	2.01	0.43
3:D:402:PLC:H3'2	3:D:402:PLC:H1A2	2.01	0.43
3:C:404:PLC:H1A2	3:C:404:PLC:H3'2	2.01	0.43
1:D:176:LEU:HB3	1:D:181:GLU:HG3	2.01	0.43
3:A:402:PLC:H1A2	3:A:402:PLC:H3'2	2.01	0.42
1:D:134:SER:HA	1:D:140:ILE:HD12	2.01	0.42
1:E:52:LEU:HB3	1:E:94:VAL:HG11	2.03	0.41
3:E:402:PLC:H1A2	3:E:402:PLC:H3'2	2.01	0.41
1:C:195:PHE:HZ	1:D:252:MET:HE2	1.85	0.41
1:E:8:PRO:HD3	1:E:72:TRP:CE3	2.56	0.41
3:B:402:PLC:H1A2	3:B:402:PLC:H3'2	2.02	0.40
1:C:271:ILE:HD12	3:C:402:PLC:H4'1	2.04	0.40
1:C:278:TYR:CD2	3:C:402:PLC:HT'1	2.56	0.40

There are no symmetry-related clashes.

5.3 Torsion angles [i](#)

5.3.1 Protein backbone [i](#)

In the following table, the Percentiles column shows the percent Ramachandran outliers of the chain as a percentile score with respect to all X-ray entries followed by that with respect to entries of similar resolution.

The Analysed column shows the number of residues for which the backbone conformation was analysed, and the total number of residues.

Mol	Chain	Analysed	Favoured	Allowed	Outliers	Percentiles	
1	A	309/317 (98%)	302 (98%)	7 (2%)	0	100	100
1	B	311/317 (98%)	304 (98%)	7 (2%)	0	100	100
1	C	309/317 (98%)	302 (98%)	7 (2%)	0	100	100
1	D	309/317 (98%)	302 (98%)	7 (2%)	0	100	100

Continued on next page...

Continued from previous page...

Mol	Chain	Analysed	Favoured	Allowed	Outliers	Percentiles	
1	E	309/317 (98%)	301 (97%)	8 (3%)	0	100	100
All	All	1547/1585 (98%)	1511 (98%)	36 (2%)	0	100	100

There are no Ramachandran outliers to report.

5.3.2 Protein sidechains ⓘ

In the following table, the Percentiles column shows the percent sidechain outliers of the chain as a percentile score with respect to all X-ray entries followed by that with respect to entries of similar resolution.

The Analysed column shows the number of residues for which the sidechain conformation was analysed, and the total number of residues.

Mol	Chain	Analysed	Rotameric	Outliers	Percentiles	
1	A	282/284 (99%)	277 (98%)	5 (2%)	59	80
1	B	282/284 (99%)	276 (98%)	6 (2%)	53	77
1	C	282/284 (99%)	276 (98%)	6 (2%)	53	77
1	D	282/284 (99%)	278 (99%)	4 (1%)	67	85
1	E	282/284 (99%)	274 (97%)	8 (3%)	43	69
All	All	1410/1420 (99%)	1381 (98%)	29 (2%)	53	77

All (29) residues with a non-rotameric sidechain are listed below:

Mol	Chain	Res	Type
1	A	5	VAL
1	A	62	ARG
1	A	86	ASP
1	A	138	ARG
1	A	141	VAL
1	B	5	VAL
1	B	63	VAL
1	B	86	ASP
1	B	138	ARG
1	B	141	VAL
1	B	180	LEU
1	C	5	VAL
1	C	62	ARG
1	C	86	ASP

Continued on next page...

Continued from previous page...

Mol	Chain	Res	Type
1	C	138	ARG
1	C	141	VAL
1	C	292	THR
1	D	5	VAL
1	D	86	ASP
1	D	138	ARG
1	D	141	VAL
1	E	5	VAL
1	E	62	ARG
1	E	86	ASP
1	E	112	SER
1	E	138	ARG
1	E	141	VAL
1	E	180	LEU
1	E	292	THR

Sometimes sidechains can be flipped to improve hydrogen bonding and reduce clashes. All (6) such sidechains are listed below:

Mol	Chain	Res	Type
1	A	284	GLN
1	B	284	GLN
1	C	284	GLN
1	D	139	ASN
1	D	284	GLN
1	E	284	GLN

5.3.3 RNA ⓘ

There are no RNA molecules in this entry.

5.4 Non-standard residues in protein, DNA, RNA chains ⓘ

There are no non-standard protein/DNA/RNA residues in this entry.

5.5 Carbohydrates ⓘ

There are no monosaccharides in this entry.

5.6 Ligand geometry

Of 39 ligands modelled in this entry, 13 are monoatomic - leaving 26 for Mogul analysis.

In the following table, the Counts columns list the number of bonds (or angles) for which Mogul statistics could be retrieved, the number of bonds (or angles) that are observed in the model and the number of bonds (or angles) that are defined in the Chemical Component Dictionary. The Link column lists molecule types, if any, to which the group is linked. The Z score for a bond length (or angle) is the number of standard deviations the observed value is removed from the expected value. A bond length (or angle) with $|Z| > 2$ is considered an outlier worth inspection. RMSZ is the root-mean-square of all Z scores of the bond lengths (or angles).

Mol	Type	Chain	Res	Link	Bond lengths			Bond angles		
					Counts	RMSZ	# Z > 2	Counts	RMSZ	# Z > 2
2	ACT	D	405	-	3,3,3	1.05	0	3,3,3	0.99	0
3	PLC	C	402	-	22,22,41	0.23	0	20,20,49	0.19	0
2	ACT	D	407	-	3,3,3	1.56	0	3,3,3	0.82	0
2	ACT	C	409	-	3,3,3	1.27	0	3,3,3	0.92	0
6	LMT	B	406	-	11,11,36	0.31	0	10,10,47	0.19	0
2	ACT	C	407	-	3,3,3	1.13	0	3,3,3	0.87	0
6	LMT	D	406	-	11,11,36	0.26	0	10,10,47	0.19	0
3	PLC	D	402	-	33,33,41	0.45	0	39,41,49	0.67	2 (5%)
2	ACT	A	401	-	3,3,3	1.42	0	3,3,3	0.91	0
2	ACT	E	406	-	3,3,3	1.12	0	3,3,3	1.04	0
6	LMT	A	408	-	11,11,36	0.19	0	10,10,47	0.16	0
6	LMT	E	407	-	11,11,36	0.30	0	10,10,47	0.49	0
2	ACT	A	407	-	3,3,3	1.05	0	3,3,3	1.31	0
3	PLC	A	402	-	33,33,41	0.45	0	39,41,49	0.68	2 (5%)
3	PLC	E	402	-	33,33,41	0.45	0	39,41,49	0.66	2 (5%)
3	PLC	D	401	-	22,22,41	0.21	0	20,20,49	0.21	0
3	PLC	E	403	-	22,22,41	0.22	0	20,20,49	0.22	0
6	LMT	A	409	-	11,11,36	0.24	0	10,10,47	0.26	0
3	PLC	C	404	-	33,33,41	0.47	0	39,41,49	0.67	2 (5%)
2	ACT	B	405	-	3,3,3	1.10	0	3,3,3	1.12	0
3	PLC	E	401	-	22,22,41	0.23	0	20,20,49	0.25	0
6	LMT	C	408	-	11,11,36	0.33	0	10,10,47	0.24	0
3	PLC	B	402	-	33,33,41	0.48	0	39,41,49	0.67	2 (5%)
2	ACT	C	403	-	3,3,3	1.70	1 (33%)	3,3,3	0.67	0
2	ACT	A	410	-	3,3,3	1.47	0	3,3,3	0.77	0
3	PLC	B	401	-	22,22,41	0.25	0	20,20,49	0.23	0

In the following table, the Chirals column lists the number of chiral outliers, the number of chiral centers analysed, the number of these observed in the model and the number defined in the Chemical Component Dictionary. Similar counts are reported in the Torsion and Rings columns. '-' means no outliers of that kind were identified.

Mol	Type	Chain	Res	Link	Chirals	Torsions	Rings
6	LMT	B	406	-	-	1/9/9/61	-
6	LMT	C	408	-	-	1/9/9/61	-
3	PLC	B	402	-	-	5/37/37/45	-
3	PLC	E	402	-	-	5/37/37/45	-
3	PLC	C	402	-	-	2/18/18/45	-
3	PLC	E	403	-	-	2/18/18/45	-
6	LMT	A	409	-	-	1/9/9/61	-
3	PLC	C	404	-	-	5/37/37/45	-
6	LMT	A	408	-	-	0/9/9/61	-
6	LMT	E	407	-	-	5/9/9/61	-
3	PLC	A	402	-	-	5/37/37/45	-
3	PLC	B	401	-	-	3/18/18/45	-
3	PLC	E	401	-	-	2/18/18/45	-
3	PLC	D	401	-	-	2/18/18/45	-
6	LMT	D	406	-	-	0/9/9/61	-
3	PLC	D	402	-	-	5/37/37/45	-

All (1) bond length outliers are listed below:

Mol	Chain	Res	Type	Atoms	Z	Observed(Å)	Ideal(Å)
2	C	403	ACT	O-C	2.05	1.31	1.22

All (10) bond angle outliers are listed below:

Mol	Chain	Res	Type	Atoms	Z	Observed(°)	Ideal(°)
3	C	404	PLC	P-O4P-C4	-2.19	110.81	121.26
3	A	402	PLC	P-O4P-C4	-2.19	110.85	121.26
3	B	402	PLC	P-O3P-C1	-2.16	109.00	121.35
3	B	402	PLC	P-O4P-C4	-2.15	111.04	121.26
3	D	402	PLC	P-O3P-C1	-2.13	109.15	121.35
3	A	402	PLC	P-O3P-C1	-2.12	109.18	121.35
3	C	404	PLC	P-O3P-C1	-2.12	109.18	121.35
3	E	402	PLC	P-O3P-C1	-2.12	109.21	121.35
3	E	402	PLC	P-O4P-C4	-2.12	111.18	121.26
3	D	402	PLC	P-O4P-C4	-2.11	111.21	121.26

There are no chirality outliers.

All (44) torsion outliers are listed below:

Mol	Chain	Res	Type	Atoms
3	A	402	PLC	C1-O3P-P-O1P
3	B	402	PLC	C1-O3P-P-O1P
3	C	404	PLC	C1-O3P-P-O1P
3	D	402	PLC	C1-O3P-P-O1P
3	E	402	PLC	C1-O3P-P-O1P
6	E	407	LMT	C4-C5-C6-C7
6	E	407	LMT	C5-C6-C7-C8
3	B	401	PLC	C8'-C9'-CA'-CB'
3	A	402	PLC	O3P-C1-C2-C3
3	B	402	PLC	O3P-C1-C2-C3
3	C	404	PLC	O3P-C1-C2-C3
3	D	402	PLC	O3P-C1-C2-C3
3	E	402	PLC	O3P-C1-C2-C3
3	A	402	PLC	C2B-C3B-C4B-C5B
3	D	401	PLC	C8'-C9'-CA'-CB'
3	E	401	PLC	C8'-C9'-CA'-CB'
3	E	403	PLC	C8'-C9'-CA'-CB'
3	C	402	PLC	C8'-C9'-CA'-CB'
3	B	402	PLC	C2B-C3B-C4B-C5B
3	D	402	PLC	C2B-C3B-C4B-C5B
3	E	402	PLC	C2B-C3B-C4B-C5B
3	C	404	PLC	C2B-C3B-C4B-C5B
3	B	402	PLC	O3P-C1-C2-O2
3	C	404	PLC	O3P-C1-C2-O2
3	D	402	PLC	O3P-C1-C2-O2
3	E	403	PLC	C1'-C2'-C3'-C4'
3	E	401	PLC	C1'-C2'-C3'-C4'
3	D	401	PLC	C1'-C2'-C3'-C4'
3	A	402	PLC	O4P-C4-C5-N
3	B	402	PLC	O4P-C4-C5-N
3	C	404	PLC	O4P-C4-C5-N
3	D	402	PLC	O4P-C4-C5-N
3	E	402	PLC	O4P-C4-C5-N
3	C	402	PLC	C1'-C2'-C3'-C4'
3	B	401	PLC	C1'-C2'-C3'-C4'
3	A	402	PLC	O3P-C1-C2-O2
3	E	402	PLC	O3P-C1-C2-O2
6	E	407	LMT	C3-C4-C5-C6
3	B	401	PLC	C7B-C8B-C9B-CAA
6	B	406	LMT	C6-C7-C8-C9
6	A	409	LMT	C5-C6-C7-C8
6	E	407	LMT	C11-C10-C9-C8
6	C	408	LMT	C6-C7-C8-C9

Continued on next page...

Continued from previous page...

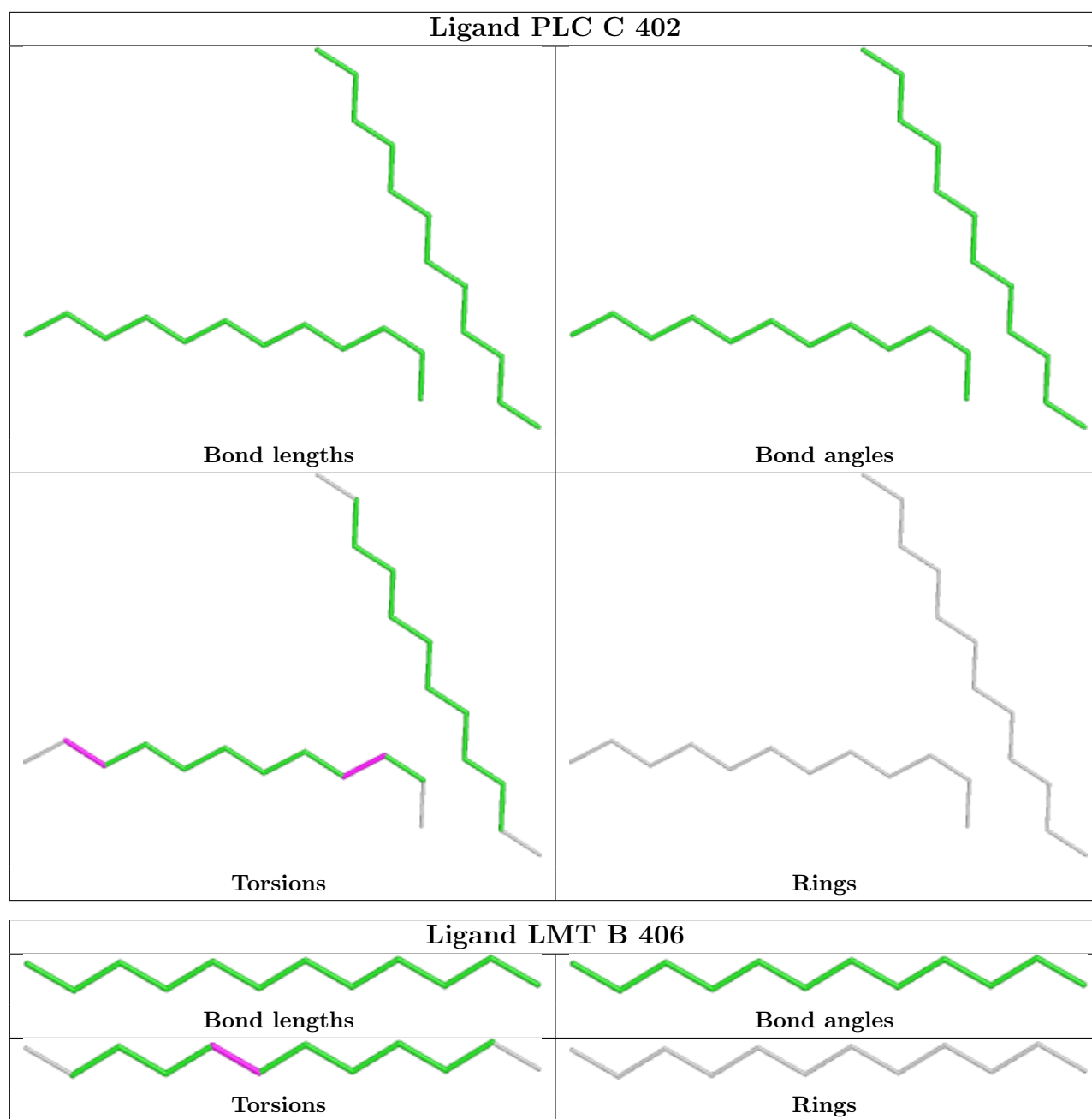
Mol	Chain	Res	Type	Atoms
6	E	407	LMT	C6-C7-C8-C9

There are no ring outliers.

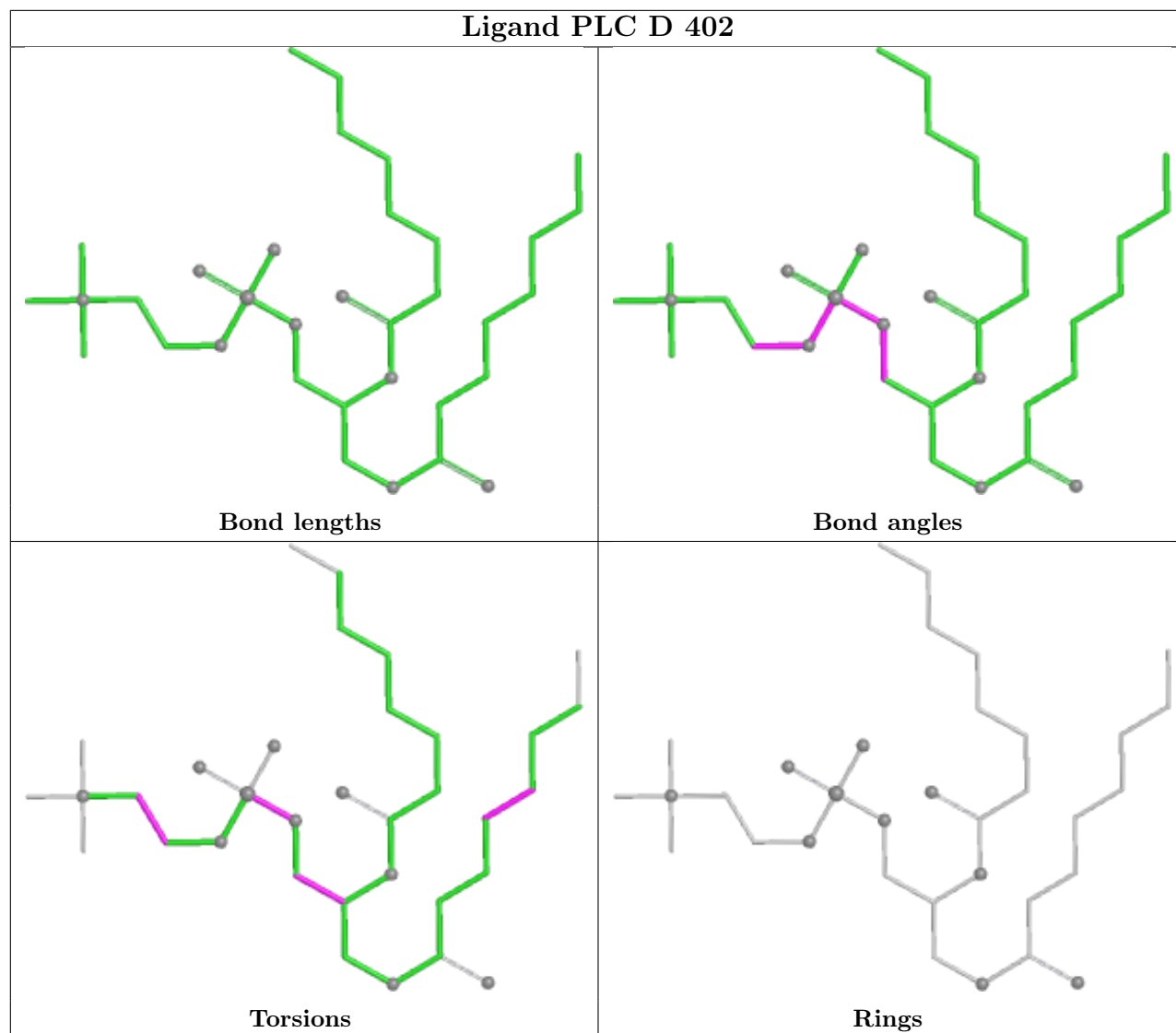
13 monomers are involved in 19 short contacts:

Mol	Chain	Res	Type	Clashes	Symm-Clashes
3	C	402	PLC	4	0
3	D	402	PLC	1	0
6	A	408	LMT	2	0
6	E	407	LMT	1	0
3	A	402	PLC	1	0
3	E	402	PLC	1	0
3	D	401	PLC	2	0
3	E	403	PLC	2	0
6	A	409	LMT	1	0
3	C	404	PLC	1	0
3	E	401	PLC	2	0
3	B	402	PLC	1	0
3	B	401	PLC	2	0

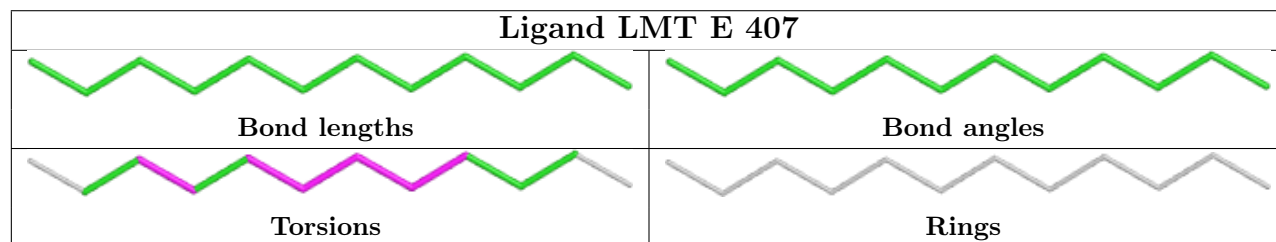
The following is a two-dimensional graphical depiction of Mogul quality analysis of bond lengths, bond angles, torsion angles, and ring geometry for all instances of the Ligand of Interest. In addition, ligands with molecular weight > 250 and outliers as shown on the validation Tables will also be included. For torsion angles, if less than 5% of the Mogul distribution of torsion angles is within 10 degrees of the torsion angle in question, then that torsion angle is considered an outlier. Any bond that is central to one or more torsion angles identified as an outlier by Mogul will be highlighted in the graph. For rings, the root-mean-square deviation (RMSD) between the ring in question and similar rings identified by Mogul is calculated over all ring torsion angles. If the average RMSD is greater than 60 degrees and the minimal RMSD between the ring in question and any Mogul-identified rings is also greater than 60 degrees, then that ring is considered an outlier. The outliers are highlighted in purple. The color gray indicates Mogul did not find sufficient equivalents in the CSD to analyse the geometry.

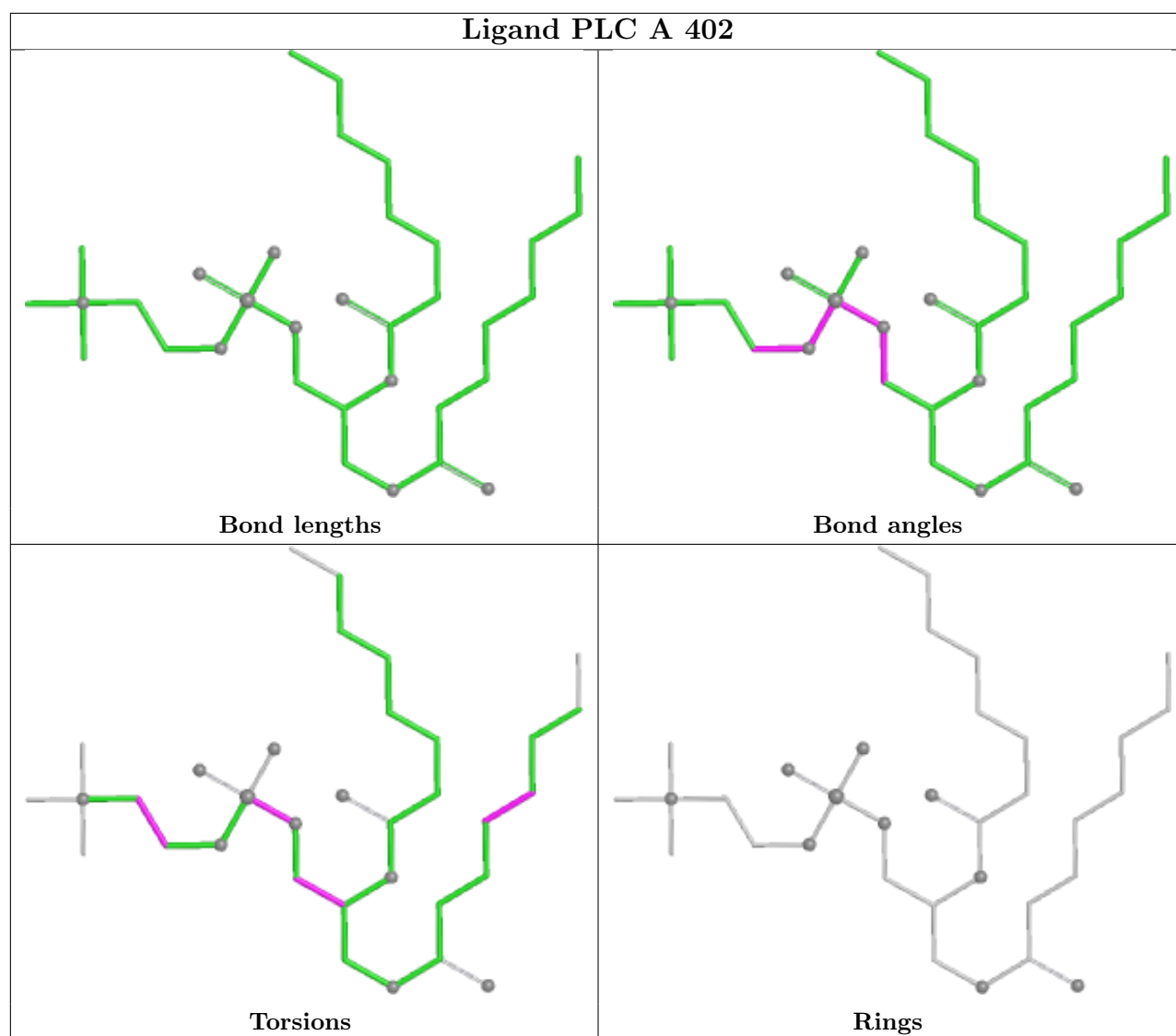


Ligand PLC D 402

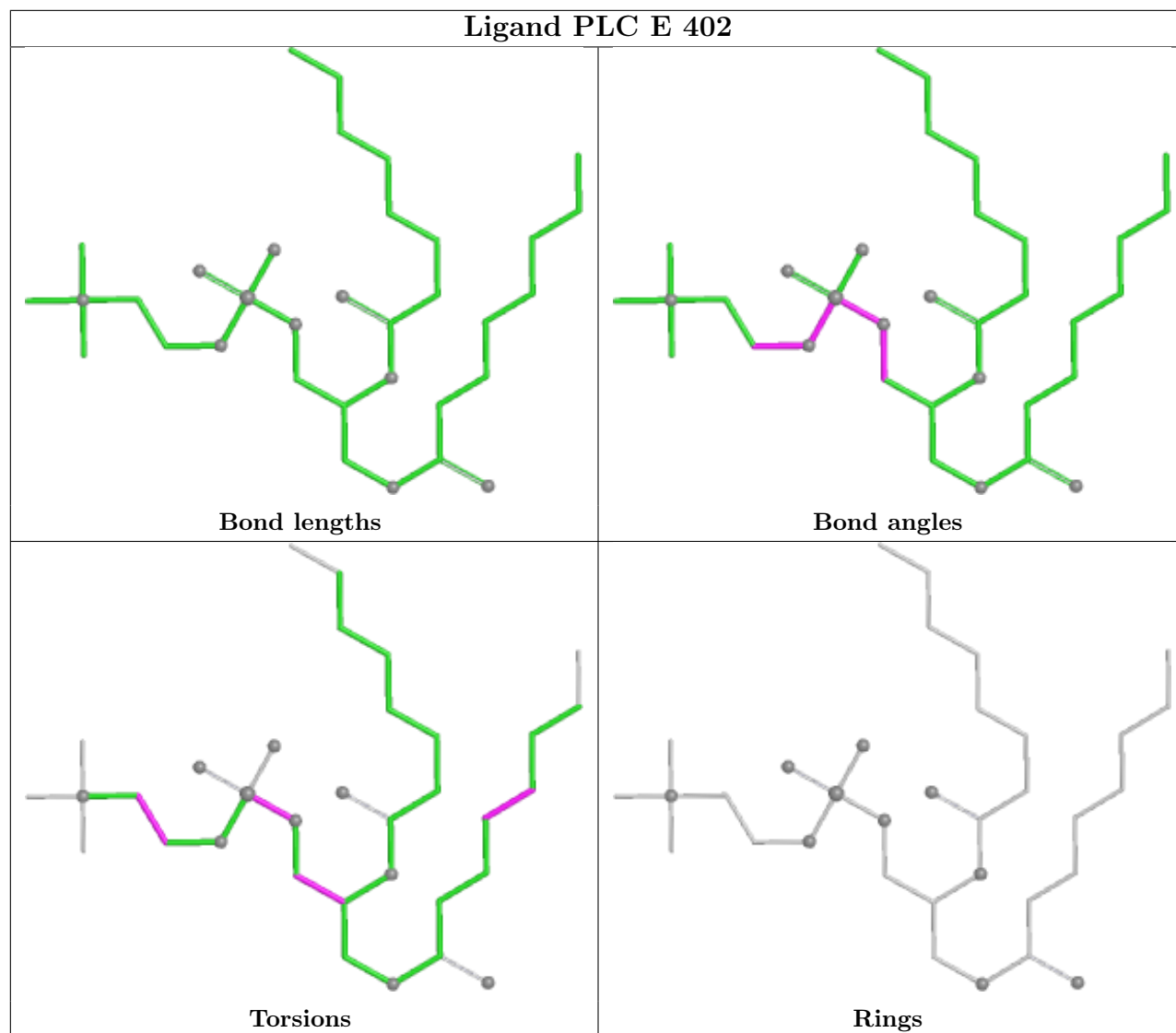


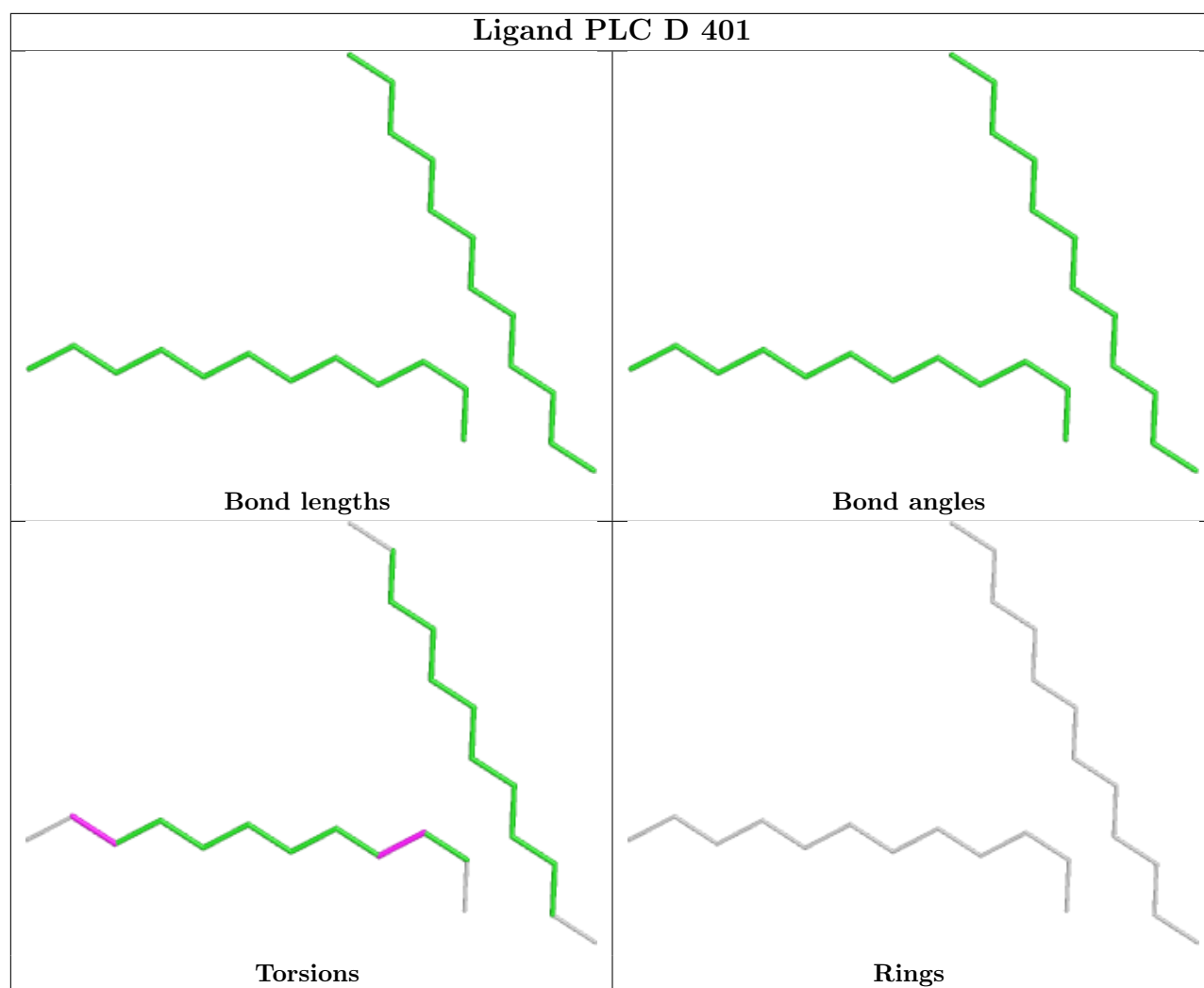
Ligand LMT E 407

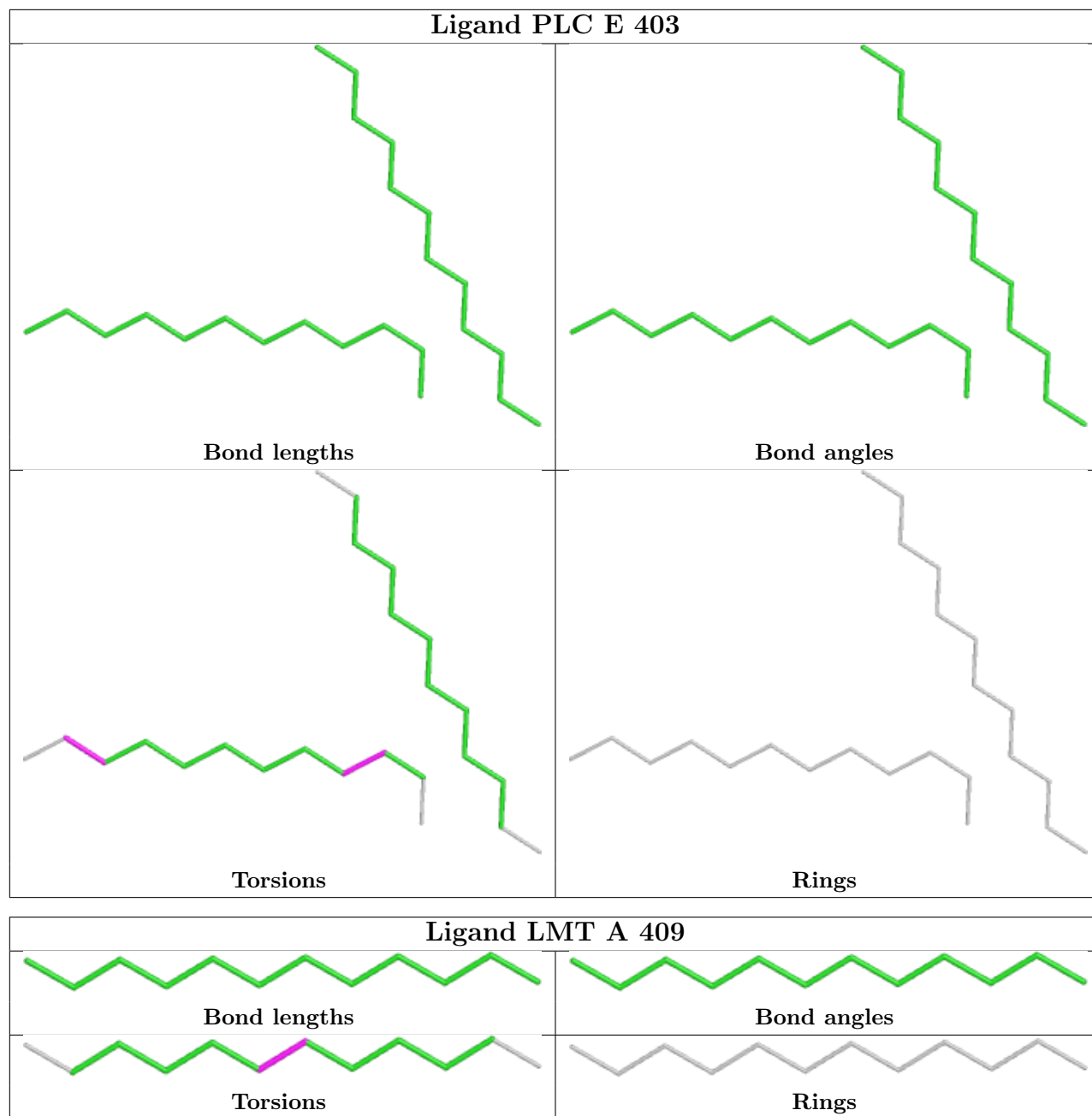




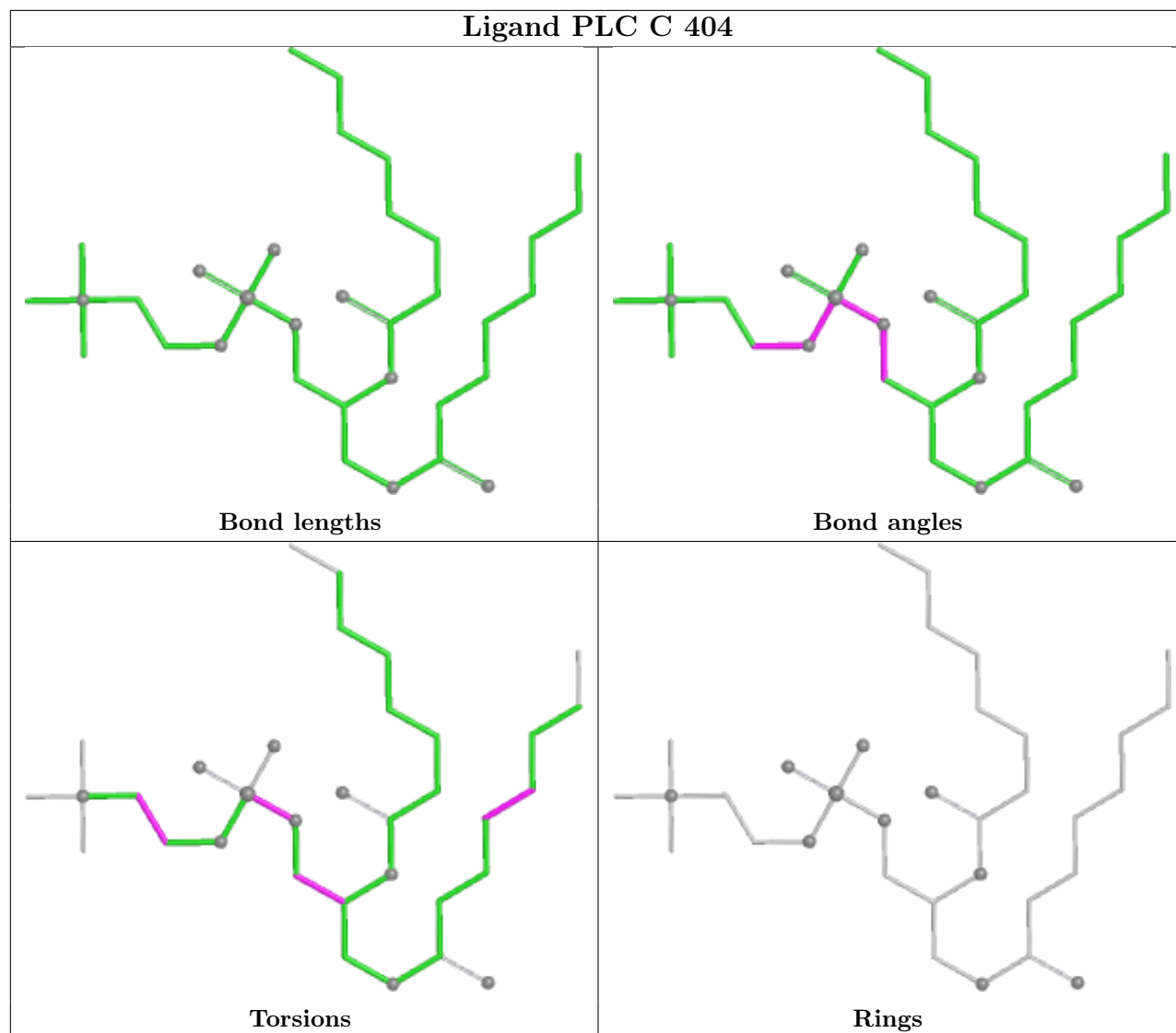
Ligand PLC E 402

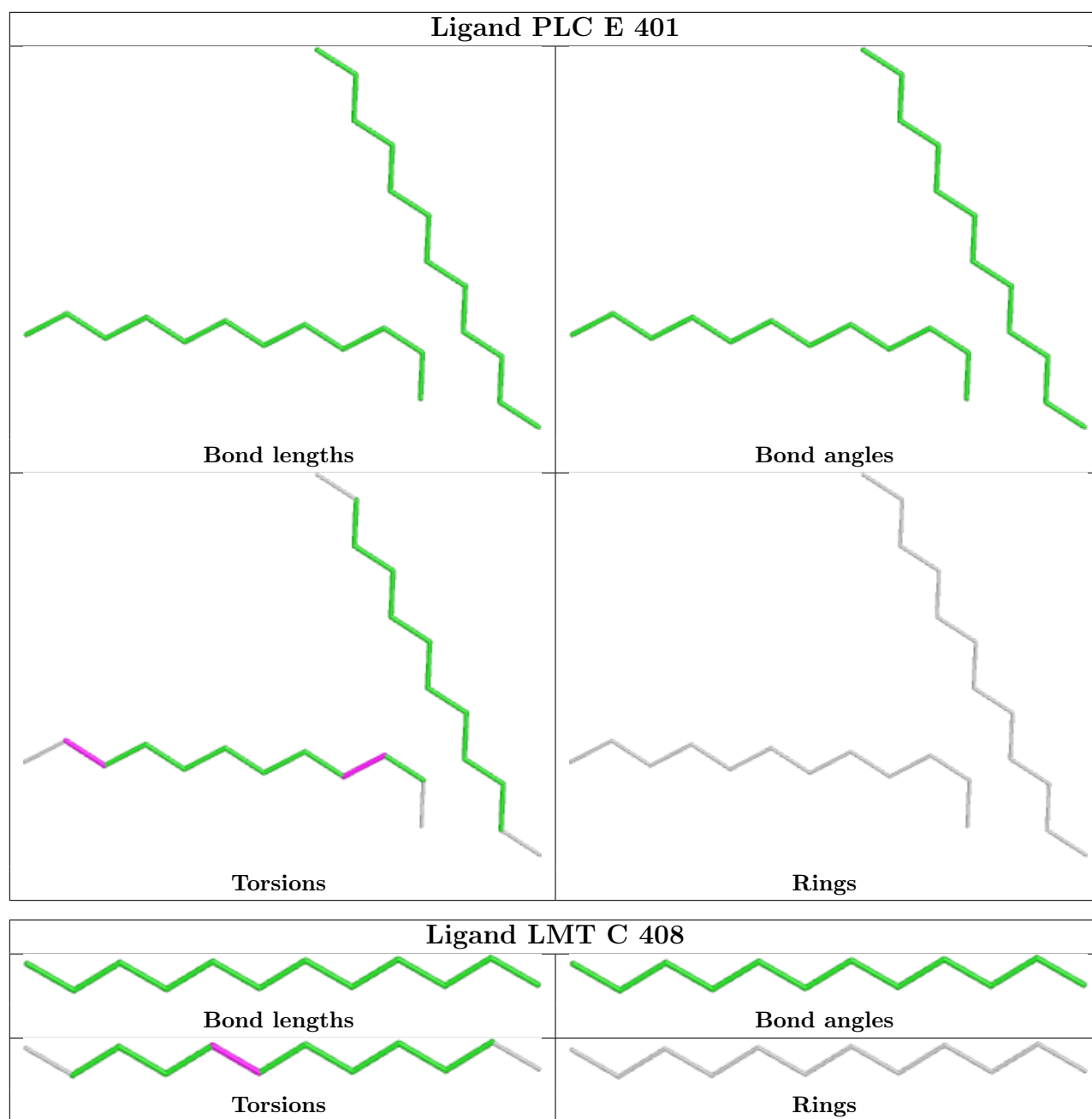


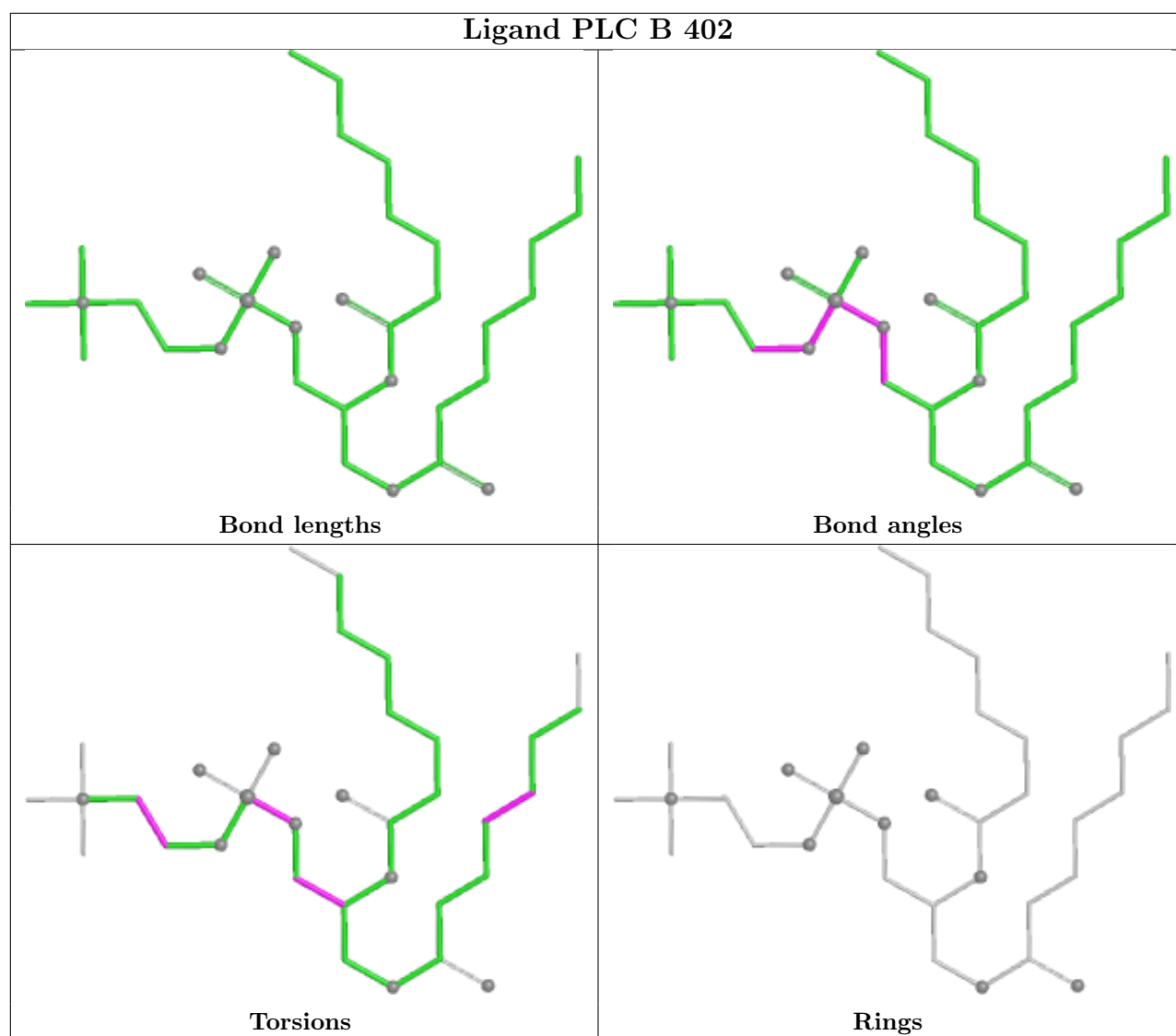


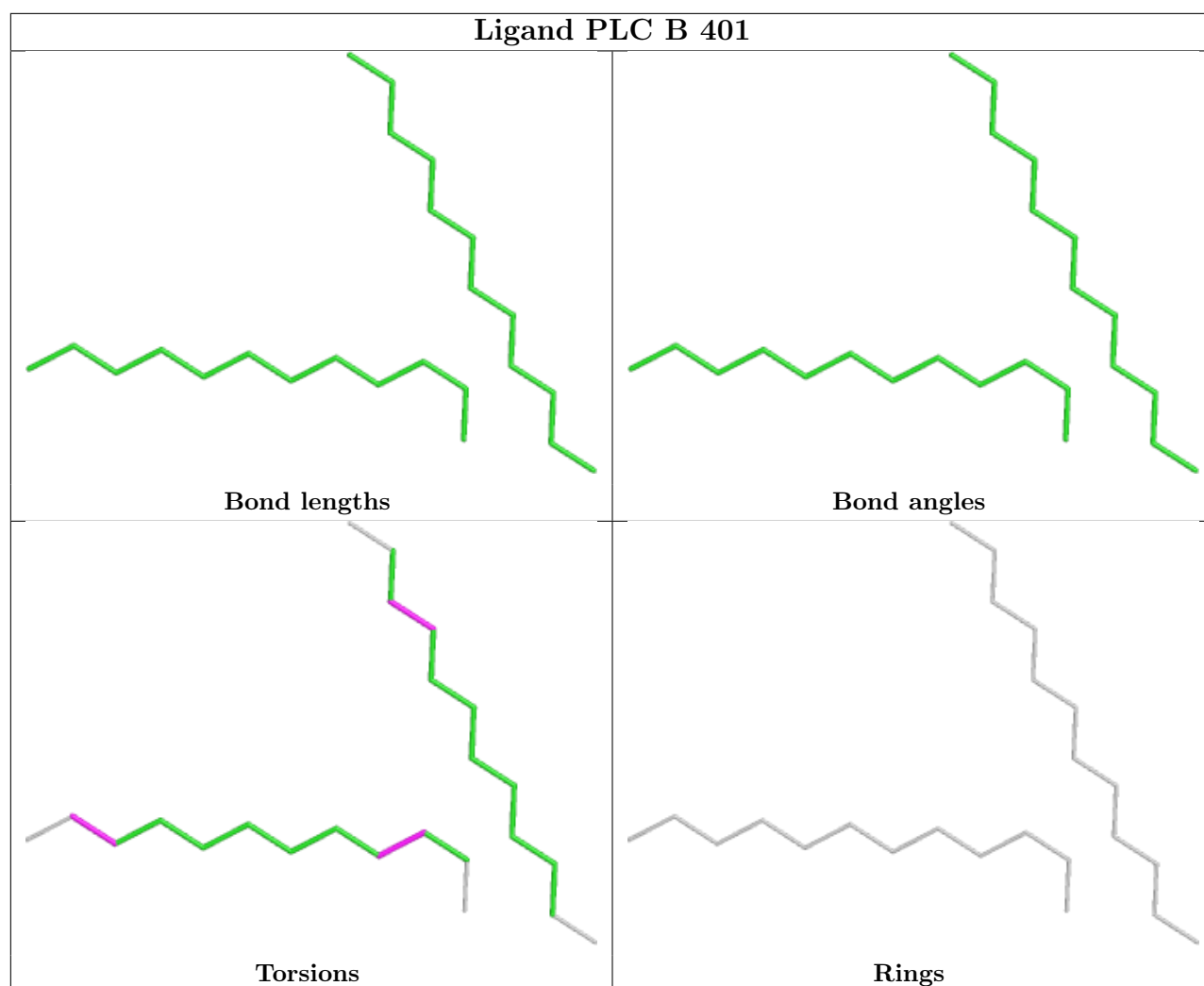


Ligand PLC C 404









5.7 Other polymers [i](#)

There are no such residues in this entry.

5.8 Polymer linkage issues [i](#)

The following chains have linkage breaks:

Mol	Chain	Number of breaks
1	A	1
1	E	1
1	D	1
1	C	1

All chain breaks are listed below:

Model	Chain	Residue-1	Atom-1	Residue-2	Atom-2	Distance (Å)
1	A	94:VAL	C	95:SER	N	2.99
1	E	94:VAL	C	95:SER	N	2.91
1	D	94:VAL	C	95:SER	N	2.90
1	C	94:VAL	C	95:SER	N	2.79

6 Fit of model and data

6.1 Protein, DNA and RNA chains

In the following table, the column labelled ‘#RSRZ > 2’ contains the number (and percentage) of RSRZ outliers, followed by percent RSRZ outliers for the chain as percentile scores relative to all X-ray entries and entries of similar resolution. The OWAB column contains the minimum, median, 95th percentile and maximum values of the occupancy-weighted average B-factor per residue. The column labelled ‘Q < 0.9’ lists the number of (and percentage) of residues with an average occupancy less than 0.9.

Mol	Chain	Analysed	<RSRZ>	#RSRZ>2	OWAB(Å ²)	Q<0.9
1	A	311/317 (98%)	-0.48	12 (3%) 39 32	21, 38, 76, 118	0
1	B	311/317 (98%)	-0.55	8 (2%) 56 50	20, 36, 67, 87	0
1	C	311/317 (98%)	-0.46	11 (3%) 44 36	23, 37, 76, 121	0
1	D	311/317 (98%)	-0.49	11 (3%) 44 36	20, 38, 76, 133	0
1	E	311/317 (98%)	-0.45	12 (3%) 39 32	23, 39, 77, 122	0
All	All	1555/1585 (98%)	-0.49	54 (3%) 44 36	20, 38, 76, 133	0

All (54) RSRZ outliers are listed below:

Mol	Chain	Res	Type	RSRZ
1	E	58	ARG	7.8
1	C	58	ARG	6.3
1	A	11	ILE	5.1
1	C	59	SER	4.6
1	C	57	VAL	4.4
1	C	13	ASP	4.1
1	A	57	VAL	4.1
1	C	60	GLY	4.0
1	C	11	ILE	4.0
1	D	57	VAL	3.8
1	D	62	ARG	3.7
1	D	59	SER	3.7
1	B	11	ILE	3.7
1	E	13	ASP	3.7
1	C	178	ASP	3.5
1	A	58	ARG	3.4
1	B	178	ASP	3.1
1	D	11	ILE	3.1
1	B	13	ASP	3.1
1	A	55	ASP	3.1

Continued on next page...

Continued from previous page...

Mol	Chain	Res	Type	RSRZ
1	D	58	ARG	3.0
1	E	136	ASP	2.9
1	C	12	ALA	2.9
1	D	154	ASP	2.9
1	A	12	ALA	2.8
1	B	136	ASP	2.8
1	A	59	SER	2.8
1	E	57	VAL	2.8
1	D	61	VAL	2.7
1	A	154	ASP	2.6
1	D	60	GLY	2.6
1	E	59	SER	2.5
1	A	69	GLU	2.5
1	B	154	ASP	2.5
1	E	69	GLU	2.5
1	D	56	PRO	2.4
1	B	12	ALA	2.4
1	B	86	ASP	2.3
1	D	86	ASP	2.3
1	D	55	ASP	2.3
1	A	86	ASP	2.3
1	E	11	ILE	2.3
1	E	60	GLY	2.3
1	C	62	ARG	2.2
1	E	86	ASP	2.2
1	C	312	PHE	2.2
1	E	178	ASP	2.2
1	A	312	PHE	2.2
1	A	60	GLY	2.1
1	C	61	VAL	2.0
1	E	62	ARG	2.0
1	E	12	ALA	2.0
1	A	13	ASP	2.0
1	B	153	ASP	2.0

6.2 Non-standard residues in protein, DNA, RNA chains ⓘ

There are no non-standard protein/DNA/RNA residues in this entry.

6.3 Carbohydrates ⓘ

There are no monosaccharides in this entry.

6.4 Ligands ⓘ

In the following table, the Atoms column lists the number of modelled atoms in the group and the number defined in the chemical component dictionary. The B-factors column lists the minimum, median, 95th percentile and maximum values of B factors of atoms in the group. The column labelled 'Q< 0.9' lists the number of atoms with occupancy less than 0.9.

Mol	Type	Chain	Res	Atoms	RSCC	RSR	B-factors(Å ²)	Q<0.9
3	PLC	C	404	34/42	0.61	0.30	39,84,119,121	0
3	PLC	B	402	34/42	0.64	0.30	44,85,124,125	0
5	NA	D	404	1/1	0.65	0.21	78,78,78,78	0
3	PLC	D	402	34/42	0.68	0.29	40,79,116,117	0
3	PLC	A	402	34/42	0.68	0.29	40,85,128,130	0
3	PLC	E	402	34/42	0.69	0.33	50,89,120,122	0
5	NA	A	406	1/1	0.73	0.17	67,67,67,67	0
3	PLC	C	402	24/42	0.76	0.31	37,51,60,61	0
5	NA	B	404	1/1	0.77	0.12	60,60,60,60	0
3	PLC	B	401	24/42	0.77	0.29	42,53,59,59	0
5	NA	C	401	1/1	0.78	0.27	69,69,69,69	0
3	PLC	D	401	24/42	0.79	0.26	41,45,52,52	0
3	PLC	E	403	24/42	0.79	0.28	40,47,51,54	0
3	PLC	E	401	24/42	0.79	0.26	35,48,54,55	0
2	ACT	C	403	4/4	0.85	0.25	60,60,60,61	0
6	LMT	C	408	12/35	0.87	0.18	17,21,36,37	0
6	LMT	E	407	12/35	0.87	0.20	21,25,44,45	0
6	LMT	B	406	12/35	0.88	0.18	20,22,38,39	0
5	NA	C	406	1/1	0.89	0.13	61,61,61,61	0
2	ACT	A	410	4/4	0.89	0.21	71,72,72,72	0
6	LMT	A	409	12/35	0.89	0.17	14,21,46,49	0
6	LMT	D	406	12/35	0.90	0.17	21,24,38,41	0
6	LMT	A	408	12/35	0.92	0.17	21,28,47,48	0
2	ACT	D	407	4/4	0.92	0.17	54,55,55,56	0
5	NA	E	405	1/1	0.92	0.10	59,59,59,59	0
2	ACT	A	401	4/4	0.94	0.15	49,50,50,50	0
2	ACT	A	407	4/4	0.95	0.14	51,52,52,54	0
4	CL	A	405	1/1	0.95	0.14	65,65,65,65	0
4	CL	E	404	1/1	0.95	0.08	50,50,50,50	0
4	CL	B	403	1/1	0.96	0.06	49,49,49,49	0
4	CL	D	403	1/1	0.96	0.07	41,41,41,41	0
2	ACT	C	407	4/4	0.96	0.16	49,50,50,53	0

Continued on next page...

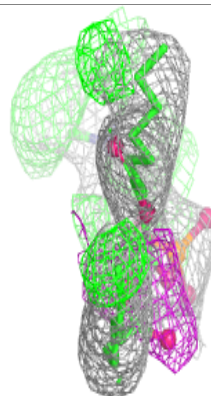
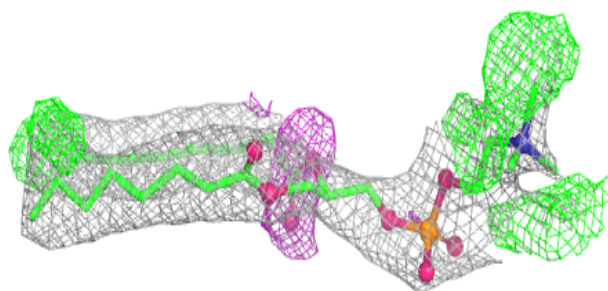
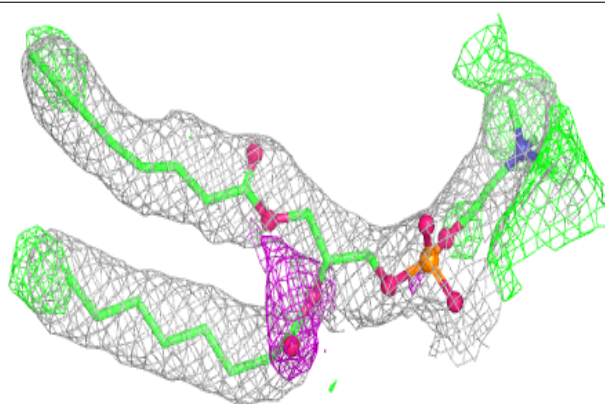
Continued from previous page...

Mol	Type	Chain	Res	Atoms	RSCC	RSR	B-factors(\AA^2)	Q<0.9
4	CL	C	405	1/1	0.97	0.06	46,46,46,46	0
4	CL	A	404	1/1	0.98	0.16	61,61,61,61	0
2	ACT	B	405	4/4	0.98	0.14	45,46,46,48	0
2	ACT	E	406	4/4	0.98	0.13	41,44,45,46	0
2	ACT	C	409	4/4	0.98	0.13	41,42,43,44	0
2	ACT	D	405	4/4	0.98	0.12	46,47,48,51	0
4	CL	A	403	1/1	0.98	0.10	37,37,37,37	0

The following is a graphical depiction of the model fit to experimental electron density of all instances of the Ligand of Interest. In addition, ligands with molecular weight > 250 and outliers as shown on the geometry validation Tables will also be included. Each fit is shown from different orientation to approximate a three-dimensional view.

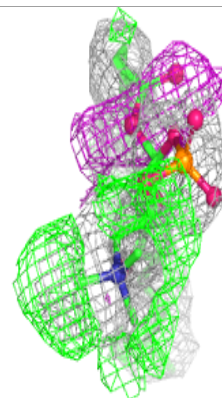
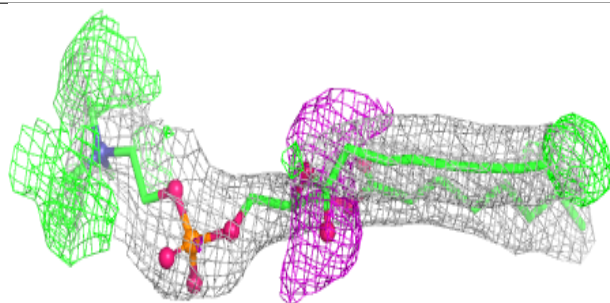
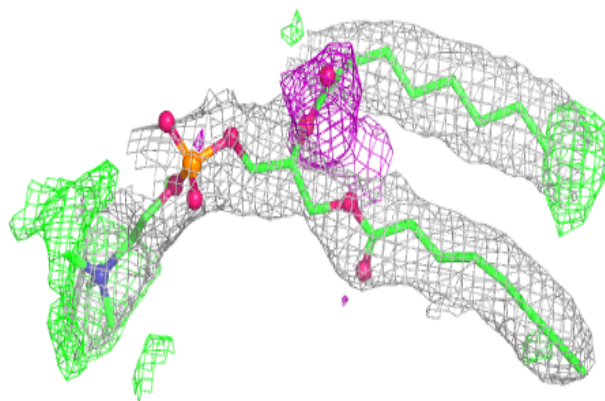
Electron density around PLC C 404:

2mF_o-DF_c (at 0.7 rmsd) in gray
mF_o-DF_c (at 3 rmsd) in purple (negative)
and green (positive)

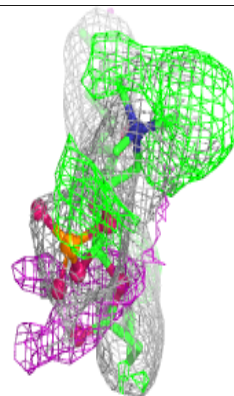
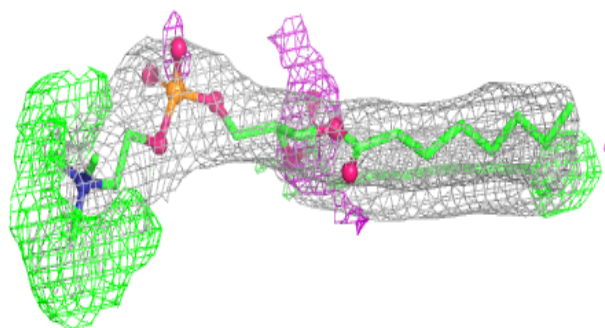
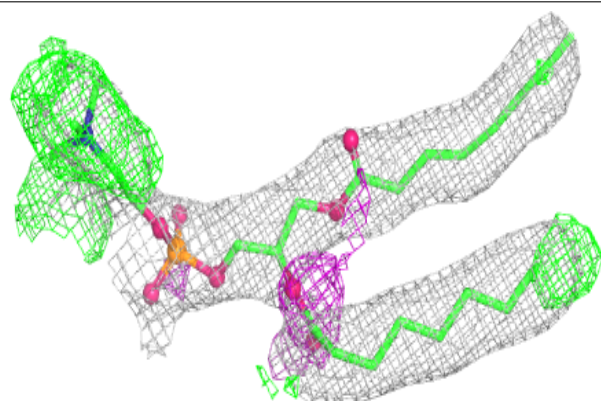


Electron density around PLC B 402:

$2mF_o-DF_c$ (at 0.7 rmsd) in gray
 mF_o-DF_c (at 3 rmsd) in purple (negative)
and green (positive)

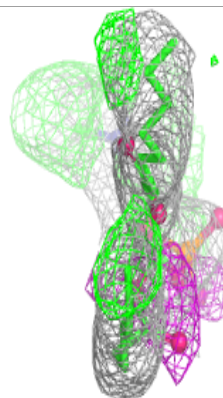
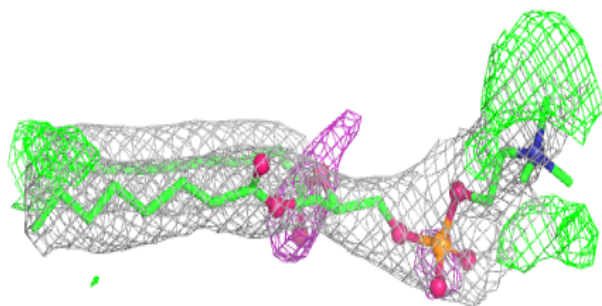
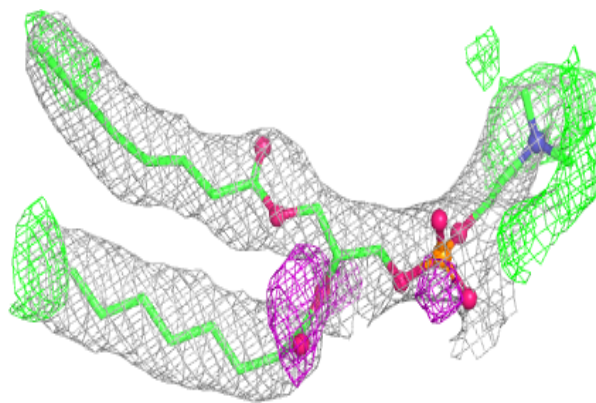
**Electron density around PLC D 402:**

$2mF_o-DF_c$ (at 0.7 rmsd) in gray
 mF_o-DF_c (at 3 rmsd) in purple (negative)
and green (positive)

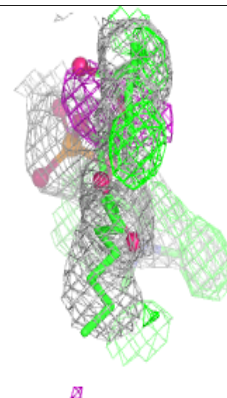
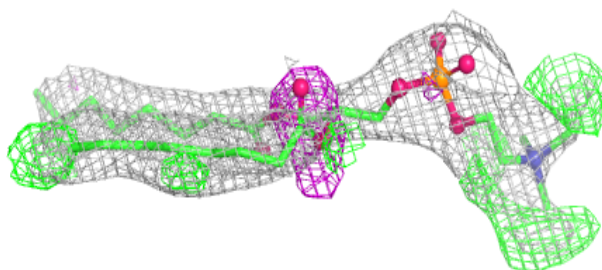
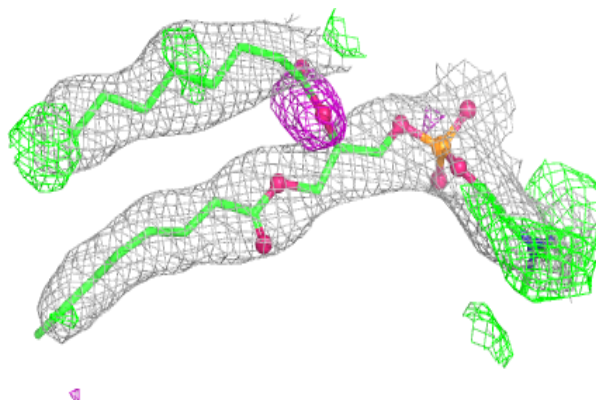


Electron density around PLC A 402:

$2mF_o-DF_c$ (at 0.7 rmsd) in gray
 mF_o-DF_c (at 3 rmsd) in purple (negative)
and green (positive)

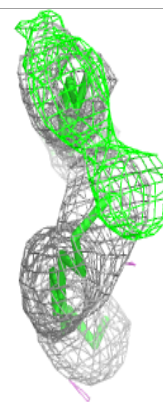
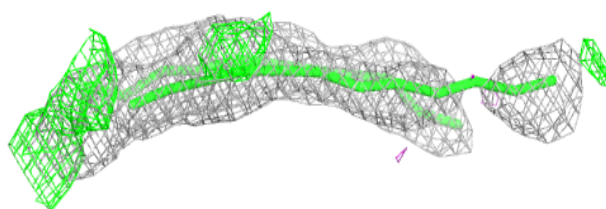
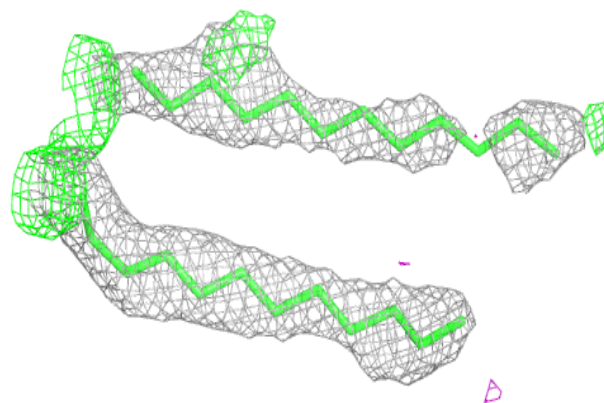
**Electron density around PLC E 402:**

$2mF_o-DF_c$ (at 0.7 rmsd) in gray
 mF_o-DF_c (at 3 rmsd) in purple (negative)
and green (positive)

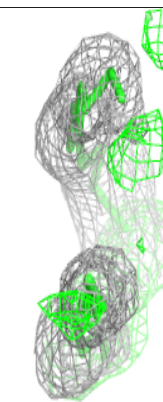
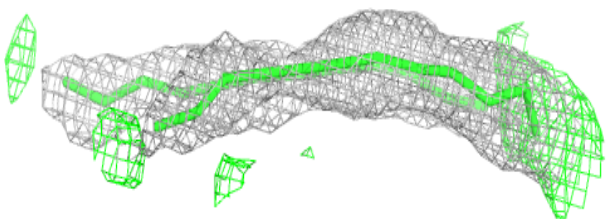
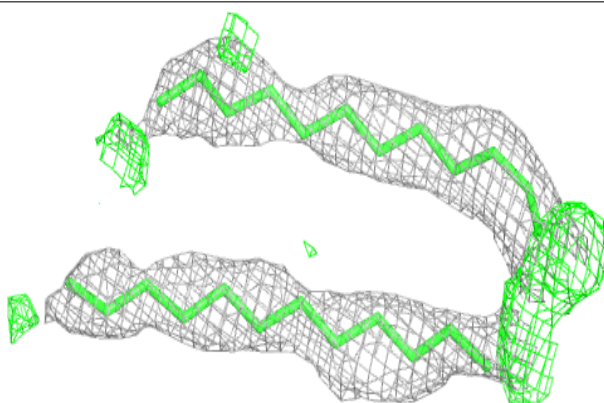


Electron density around PLC C 402:

$2mF_o-DF_c$ (at 0.7 rmsd) in gray
 mF_o-DF_c (at 3 rmsd) in purple (negative)
and green (positive)

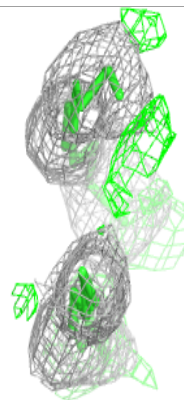
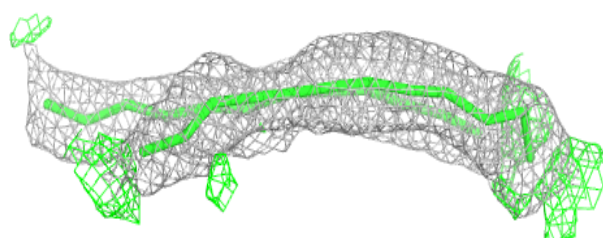
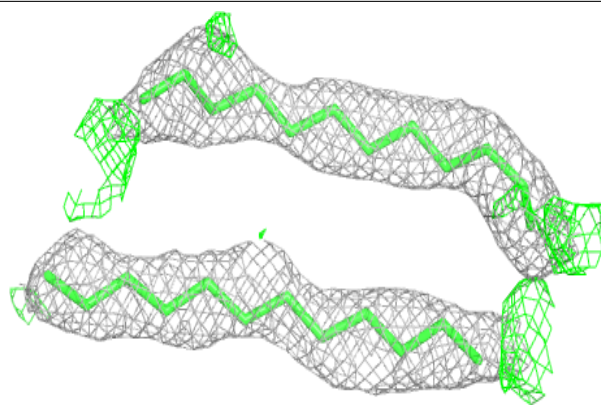
**Electron density around PLC B 401:**

$2mF_o-DF_c$ (at 0.7 rmsd) in gray
 mF_o-DF_c (at 3 rmsd) in purple (negative)
and green (positive)

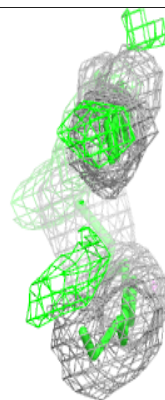
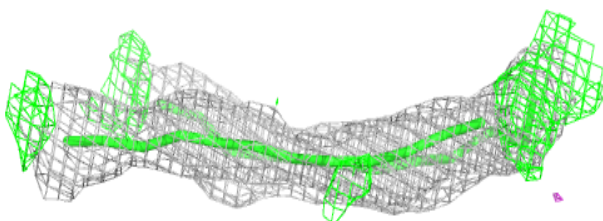
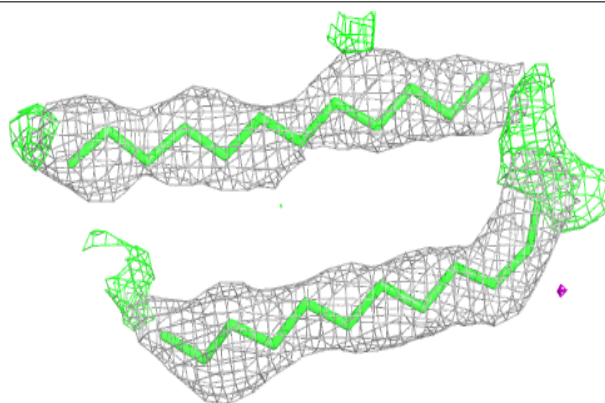


Electron density around PLC D 401:

$2mF_o-DF_c$ (at 0.7 rmsd) in gray
 mF_o-DF_c (at 3 rmsd) in purple (negative)
and green (positive)

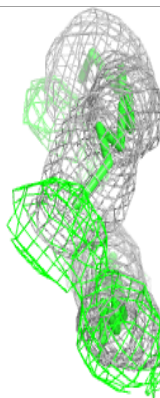
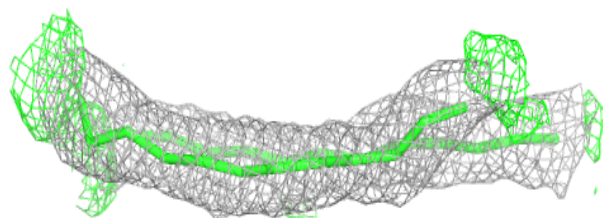
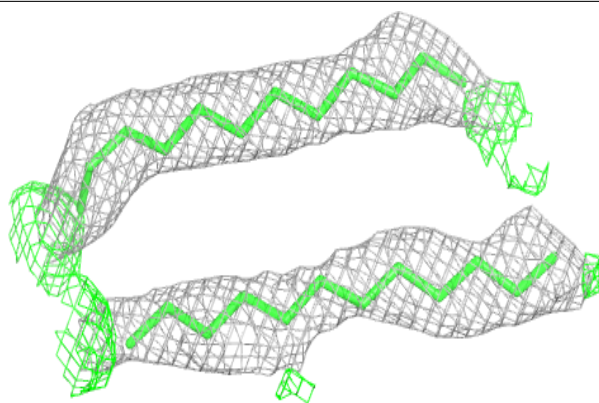
**Electron density around PLC E 403:**

$2mF_o-DF_c$ (at 0.7 rmsd) in gray
 mF_o-DF_c (at 3 rmsd) in purple (negative)
and green (positive)

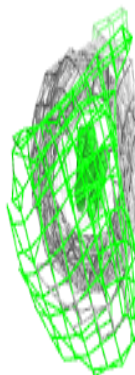
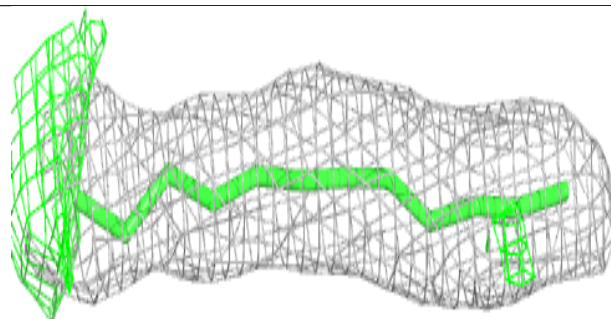
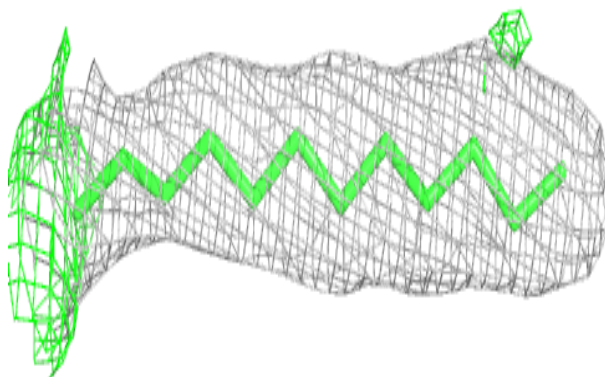


Electron density around PLC E 401:

$2mF_o-DF_c$ (at 0.7 rmsd) in gray
 mF_o-DF_c (at 3 rmsd) in purple (negative)
and green (positive)

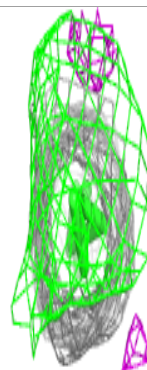
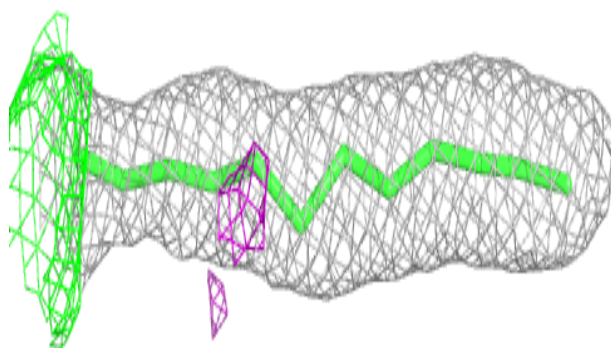
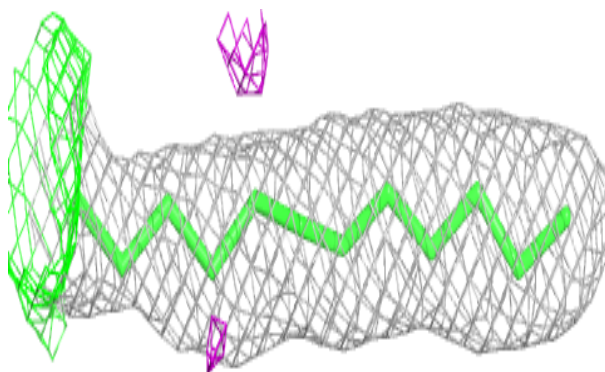
**Electron density around LMT C 408:**

$2mF_o-DF_c$ (at 0.7 rmsd) in gray
 mF_o-DF_c (at 3 rmsd) in purple (negative)
and green (positive)

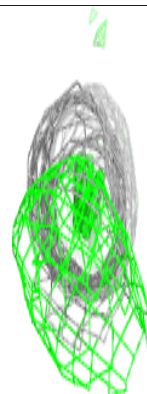
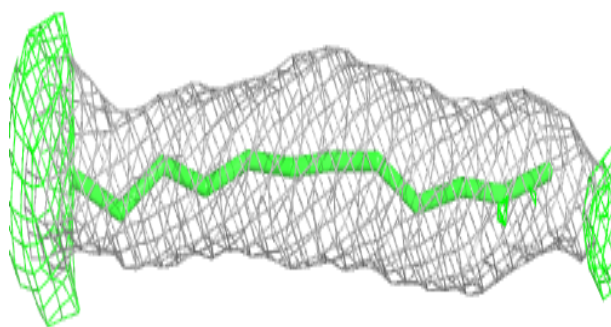
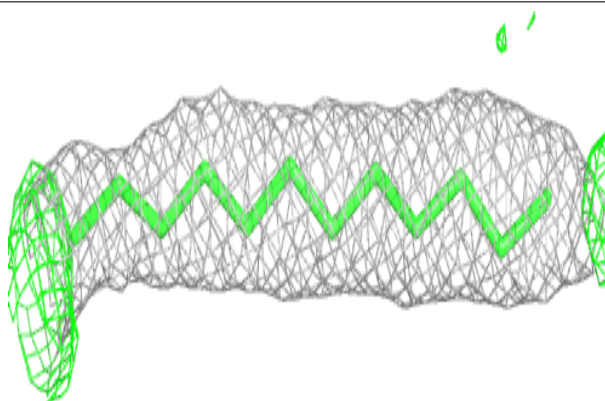


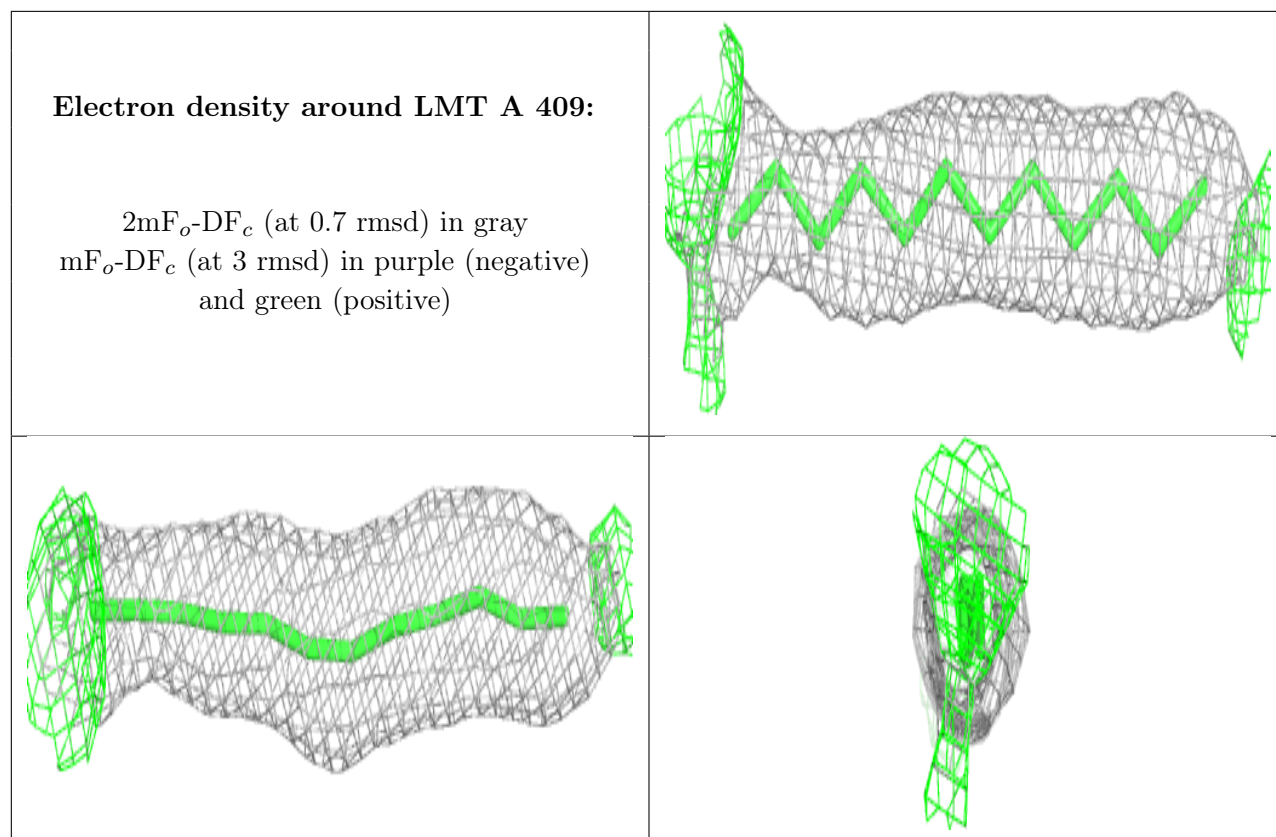
Electron density around LMT E 407:

$2mF_o-DF_c$ (at 0.7 rmsd) in gray
 mF_o-DF_c (at 3 rmsd) in purple (negative)
and green (positive)

**Electron density around LMT B 406:**

$2mF_o-DF_c$ (at 0.7 rmsd) in gray
 mF_o-DF_c (at 3 rmsd) in purple (negative)
and green (positive)





6.5 Other polymers [i](#)

There are no such residues in this entry.