



# Full wwPDB X-ray Structure Validation Report ⓘ

Nov 3, 2024 – 07:48 AM EST

PDB ID : 1ELI  
Title : COMPLEX OF MONOMERIC SARCOSINE OXIDASE WITH THE INHIBITOR PYRROLE-2-CARBOXYLATE  
Authors : Wagner, M.A.; Trickey, P.; Chen, Z.-W.; Mathews, F.S.; Jorns, M.S.  
Deposited on : 2000-03-13  
Resolution : 2.00 Å(reported)

This is a Full wwPDB X-ray Structure Validation Report for a publicly released PDB entry.

We welcome your comments at [validation@mail.wwpdb.org](mailto:validation@mail.wwpdb.org)

A user guide is available at

<https://www.wwpdb.org/validation/2017/XrayValidationReportHelp>

with specific help available everywhere you see the ⓘ symbol.

The types of validation reports are described at

<http://www.wwpdb.org/validation/2017/FAQs#types>.

---

The following versions of software and data (see [references ⓘ](#)) were used in the production of this report:

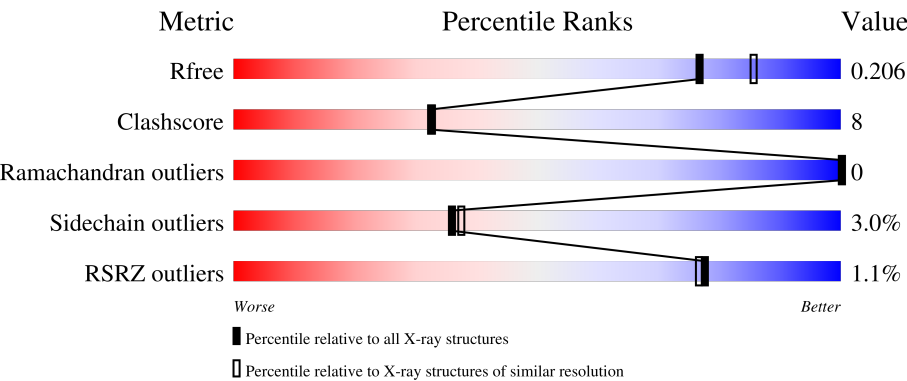
MolProbity	:	4.02b-467
Mogul	:	2022.3.0, CSD as543be (2022)
Xtriage (Phenix)	:	1.20.1
EDS	:	3.0
buster-report	:	1.1.7 (2018)
Percentile statistics	:	20231227.v01 (using entries in the PDB archive December 27th 2023)
CCP4	:	9.0.003 (Gargrove)
Density-Fitness	:	1.0.11
Ideal geometry (proteins)	:	Engh & Huber (2001)
Ideal geometry (DNA, RNA)	:	Parkinson et al. (1996)
Validation Pipeline (wwPDB-VP)	:	2.39

# 1 Overall quality at a glance i

The following experimental techniques were used to determine the structure:  
*X-RAY DIFFRACTION*

The reported resolution of this entry is 2.00 Å.

Percentile scores (ranging between 0-100) for global validation metrics of the entry are shown in the following graphic. The table shows the number of entries on which the scores are based.



Metric	Whole archive (#Entries)	Similar resolution (#Entries, resolution range(Å))
$R_{free}$	164625	9409 (2.00-2.00)
Clashscore	180529	10737 (2.00-2.00)
Ramachandran outliers	177936	10628 (2.00-2.00)
Sidechain outliers	177891	10627 (2.00-2.00)
RSRZ outliers	164620	9409 (2.00-2.00)

The table below summarises the geometric issues observed across the polymeric chains and their fit to the electron density. The red, orange, yellow and green segments of the lower bar indicate the fraction of residues that contain outliers for  $\geq 3$ , 2, 1 and 0 types of geometric quality criteria respectively. A grey segment represents the fraction of residues that are not modelled. The numeric value for each fraction is indicated below the corresponding segment, with a dot representing fractions  $\leq 5\%$ . The upper red bar (where present) indicates the fraction of residues that have poor fit to the electron density. The numeric value is given above the bar.

Mol	Chain	Length	Quality of chain
1	A	389	<div><div>%</div><div><div></div><div>86%</div><div>12%</div><div>..</div></div></div>
1	B	389	<div><div>%</div><div><div></div><div>84%</div><div>14%</div><div>..</div></div></div>

The following table lists non-polymeric compounds, carbohydrate monomers and non-standard residues in protein, DNA, RNA chains that are outliers for geometric or electron-density-fit criteria:

Mol	Type	Chain	Res	Chirality	Geometry	Clashes	Electron density
2	PO4	B	812	-	-	X	-

## 2 Entry composition

There are 6 unique types of molecules in this entry. The entry contains 6849 atoms, of which 0 are hydrogens and 0 are deuteriums.

In the tables below, the ZeroOcc column contains the number of atoms modelled with zero occupancy, the AltConf column contains the number of residues with at least one atom in alternate conformation and the Trace column contains the number of residues modelled with at most 2 atoms.

- Molecule 1 is a protein called SARCOSINE OXIDASE.

Mol	Chain	Residues	Atoms						ZeroOcc	AltConf	Trace
1	A	385	Total	C	N	O	S	Se	0	2	0
			3025	1925	510	579	4	7			
1	B	385	Total	C	N	O	S	Se	0	2	0
			3025	1925	510	579	4	7			

There are 14 discrepancies between the modelled and reference sequences:

Chain	Residue	Modelled	Actual	Comment	Reference
A	14	MSE	MET	modified residue	UNP P40859
A	16	MSE	MET	modified residue	UNP P40859
A	105	MSE	MET	modified residue	UNP P40859
A	201	MSE	MET	modified residue	UNP P40859
A	245	MSE	MET	modified residue	UNP P40859
A	302	MSE	MET	modified residue	UNP P40859
A	316	MSE	MET	modified residue	UNP P40859
B	14	MSE	MET	modified residue	UNP P40859
B	16	MSE	MET	modified residue	UNP P40859
B	105	MSE	MET	modified residue	UNP P40859
B	201	MSE	MET	modified residue	UNP P40859
B	245	MSE	MET	modified residue	UNP P40859
B	302	MSE	MET	modified residue	UNP P40859
B	316	MSE	MET	modified residue	UNP P40859

- Molecule 2 is PHOSPHATE ION (three-letter code: PO4) (formula: O<sub>4</sub>P).

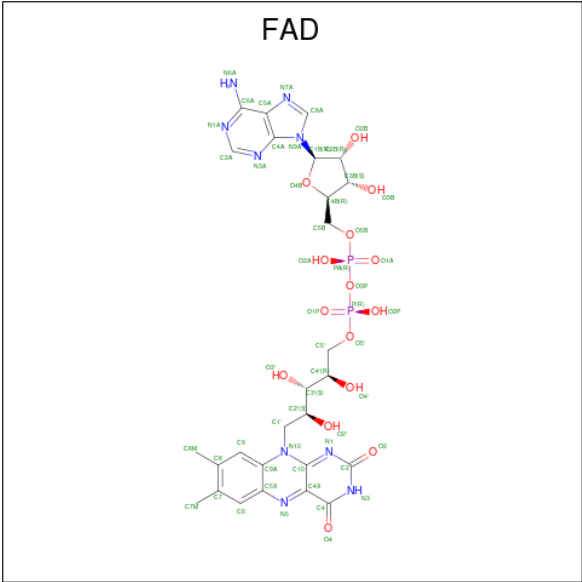


Mol	Chain	Residues	Atoms			ZeroOcc	AltConf
2	A	1	Total	O	P	0	0
			5	4	1		
2	B	1	Total	O	P	0	0
			5	4	1		
2	B	1	Total	O	P	0	0
			5	4	1		

- Molecule 3 is CHLORIDE ION (three-letter code: CL) (formula: Cl).

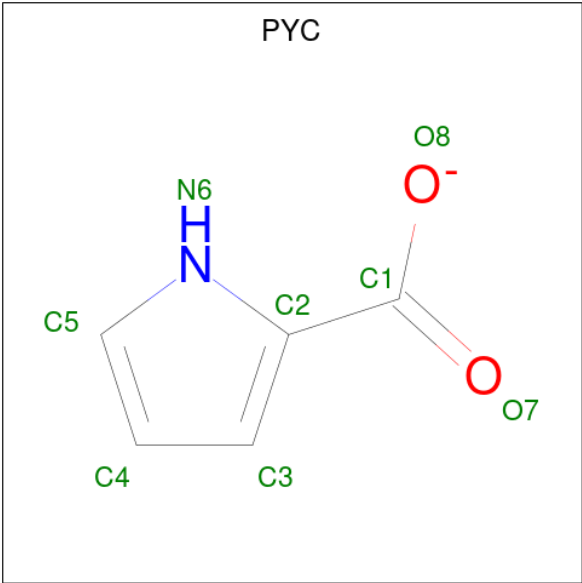
Mol	Chain	Residues	Atoms		ZeroOcc	AltConf
3	A	1	Total	Cl	0	0
			1	1		
3	B	1	Total	Cl	0	0
			1	1		

- Molecule 4 is FLAVIN-ADENINE DINUCLEOTIDE (three-letter code: FAD) (formula: C<sub>27</sub>H<sub>33</sub>N<sub>9</sub>O<sub>15</sub>P<sub>2</sub>).



Mol	Chain	Residues	Atoms					ZeroOcc	AltConf
4	A	1	Total 53	C 27	N 9	O 15	P 2	0	0
4	B	1	Total 53	C 27	N 9	O 15	P 2	0	0

- Molecule 5 is PYRROLE-2-CARBOXYLATE (three-letter code: PYC) (formula: C<sub>5</sub>H<sub>4</sub>NO<sub>2</sub>).



Mol	Chain	Residues	Atoms				ZeroOcc	AltConf
5	A	1	Total	C	N	O	0	0
			8	5	1	2		
5	B	1	Total	C	N	O	0	0
			8	5	1	2		

Continued on next page...

*Continued from previous page...*

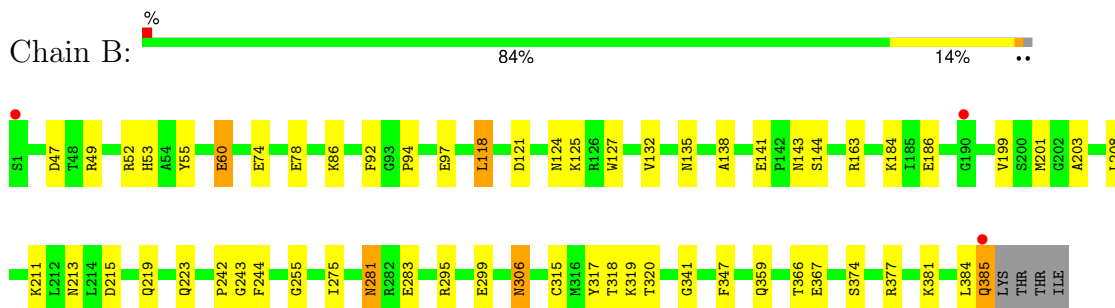
Mol	Chain	Residues	Atoms				ZeroOcc	AltConf
5	B	1	Total	C	N	O	0	0
			8	5	1	2		

- Molecule 6 is water.

Mol	Chain	Residues	Atoms		ZeroOcc	AltConf
6	A	330	Total	O	0	0
			330	330		
6	B	322	Total	O	0	0
			322	322		

i

- Molecule 1: SARCOSINE OXIDASE





## 4 Data and refinement statistics

Property	Value	Source
Space group	P 1 21 1	Depositor
Cell constants a, b, c, $\alpha$ , $\beta$ , $\gamma$	72.83Å 69.36Å 73.74Å 90.00° 94.14° 90.00°	Depositor
Resolution (Å)	500.00 – 2.00 73.55 – 2.00	Depositor EDS
% Data completeness (in resolution range)	86.9 (500.00-2.00) 87.0 (73.55-2.00)	Depositor EDS
$R_{merge}$	0.08	Depositor
$R_{sym}$	(Not available)	Depositor
$\langle I/\sigma(I) \rangle$ <sup>1</sup>	4.81 (at 2.00Å)	Xtriage
Refinement program	CNS 0.9	Depositor
R, $R_{free}$	0.163 , 0.213 0.156 , 0.206	Depositor DCC
$R_{free}$ test set	4480 reflections (10.17%)	wwPDB-VP
Wilson B-factor (Å <sup>2</sup> )	23.2	Xtriage
Anisotropy	0.583	Xtriage
Bulk solvent $k_{sol}$ (e/Å <sup>3</sup> ), $B_{sol}$ (Å <sup>2</sup> )	0.41 , 53.2	EDS
L-test for twinning <sup>2</sup>	$\langle  L  \rangle = 0.50$ , $\langle L^2 \rangle = 0.33$	Xtriage
Estimated twinning fraction	0.016 for l,-k,h	Xtriage
$F_o, F_c$ correlation	0.96	EDS
Total number of atoms	6849	wwPDB-VP
Average B, all atoms (Å <sup>2</sup> )	26.0	wwPDB-VP

Xtriage's analysis on translational NCS is as follows: *The largest off-origin peak in the Patterson function is 11.06% of the height of the origin peak. No significant pseudotranslation is detected.*

<sup>1</sup>Intensities estimated from amplitudes.

<sup>2</sup>Theoretical values of  $\langle |L| \rangle$ ,  $\langle L^2 \rangle$  for acentric reflections are 0.5, 0.333 respectively for untwinned datasets, and 0.375, 0.2 for perfectly twinned datasets.

## 5 Model quality [i](#)

### 5.1 Standard geometry [i](#)

Bond lengths and bond angles in the following residue types are not validated in this section: PO4, PYC, FAD, CL

The Z score for a bond length (or angle) is the number of standard deviations the observed value is removed from the expected value. A bond length (or angle) with  $|Z| > 5$  is considered an outlier worth inspection. RMSZ is the root-mean-square of all Z scores of the bond lengths (or angles).

Mol	Chain	Bond lengths		Bond angles	
		RMSZ	$\# Z  > 5$	RMSZ	$\# Z  > 5$
1	A	0.54	0/3093	0.74	2/4176 (0.0%)
1	B	0.54	0/3093	0.74	2/4176 (0.0%)
All	All	0.54	0/6186	0.74	4/8352 (0.0%)

There are no bond length outliers.

All (4) bond angle outliers are listed below:

Mol	Chain	Res	Type	Atoms	Z	Observed(°)	Ideal(°)
1	B	118	LEU	CA-CB-CG	6.25	129.68	115.30
1	A	243	GLY	N-CA-C	-5.75	98.73	113.10
1	B	243	GLY	N-CA-C	-5.64	98.99	113.10
1	A	118	LEU	CA-CB-CG	5.54	128.03	115.30

There are no chirality outliers.

There are no planarity outliers.

### 5.2 Too-close contacts [i](#)

In the following table, the Non-H and H(model) columns list the number of non-hydrogen atoms and hydrogen atoms in the chain respectively. The H(added) column lists the number of hydrogen atoms added and optimized by MolProbity. The Clashes column lists the number of clashes within the asymmetric unit, whereas Symm-Clashes lists symmetry-related clashes.

Mol	Chain	Non-H	H(model)	H(added)	Clashes	Symm-Clashes
1	A	3025	0	2926	44	0
1	B	3025	0	2926	51	0
2	A	5	0	0	0	0
2	B	10	0	0	6	0
3	A	1	0	0	0	0

*Continued on next page...*

*Continued from previous page...*

Mol	Chain	Non-H	H(model)	H(added)	Clashes	Symm-Clashes
3	B	1	0	0	0	0
4	A	53	0	30	3	0
4	B	53	0	29	2	0
5	A	8	0	4	3	0
5	B	16	0	8	1	0
6	A	330	0	0	5	0
6	B	322	0	0	7	0
All	All	6849	0	5923	94	0

The all-atom clashscore is defined as the number of clashes found per 1000 atoms (including hydrogen atoms). The all-atom clashscore for this structure is 8.

All (94) close contacts within the same asymmetric unit are listed below, sorted by their clash magnitude.

Atom-1	Atom-2	Interatomic distance (Å)	Clash overlap (Å)
1:B:121:ASP:OD1	1:B:125:LYS:HE2	1.77	0.85
1:A:121:ASP:OD1	1:A:125:LYS:HE2	1.80	0.82
1:B:219:GLN:HB3	6:B:1021:HOH:O	1.82	0.79
1:B:141:GLU:HG3	2:B:812:PO4:P	2.27	0.74
1:A:124:ASN:HD21	1:A:132:VAL:H	1.36	0.71
1:B:319:LYS:O	6:B:1021:HOH:O	2.08	0.71
1:A:213:ASN:ND2	1:A:385:GLN:HB2	2.06	0.70
1:B:281:ASN:HD22	1:B:283:GLU:H	1.40	0.70
1:B:124:ASN:HD21	1:B:132:VAL:H	1.40	0.69
1:A:281:ASN:HD22	1:A:283:GLU:H	1.40	0.69
1:B:295:ARG:HH11	1:B:306:ASN:ND2	1.90	0.68
1:B:213:ASN:ND2	1:B:385:GLN:HB2	2.08	0.68
1:A:213:ASN:HD22	1:A:385:GLN:HB2	1.59	0.66
1:A:295:ARG:HH11	1:A:306:ASN:ND2	1.95	0.64
1:B:213:ASN:HD22	1:B:385:GLN:HB2	1.61	0.63
1:A:141:GLU:OE1	1:A:144:SER:OG	2.17	0.61
1:B:211:LYS:HE3	6:B:1037:HOH:O	2.02	0.59
1:B:135:ASN:HD22	1:B:135:ASN:H	1.51	0.58
1:A:135:ASN:H	1:A:135:ASN:HD22	1.51	0.57
1:A:382:GLU:HB3	6:A:1126:HOH:O	2.05	0.56
1:A:124:ASN:HD21	1:A:132:VAL:HG22	1.70	0.56
1:B:124:ASN:HD21	1:B:132:VAL:HG22	1.70	0.56
1:A:215:ASP:HB2	1:A:385:GLN:OE1	2.05	0.56
1:B:141:GLU:HG3	2:B:812:PO4:O3	2.05	0.56
1:A:295:ARG:O	1:A:299:GLU:HG2	2.08	0.54
1:B:215:ASP:HB2	1:B:385:GLN:OE1	2.08	0.53

*Continued on next page...*

*Continued from previous page...*

Atom-1	Atom-2	Interatomic distance (Å)	Clash overlap (Å)
1:A:244:PHE:CZ	1:A:255:GLY:HA3	2.45	0.52
1:B:295:ARG:O	1:B:299:GLU:HG2	2.09	0.52
1:B:141:GLU:CG	2:B:812:PO4:P	2.98	0.51
1:B:60:GLU:H	1:B:60:GLU:CD	2.13	0.51
1:B:359:GLN:HE22	1:B:367:GLU:HG2	1.76	0.50
1:A:254:TYR:CG	5:A:801:PYC:H41	2.46	0.50
1:A:359:GLN:HE22	1:A:367:GLU:HG2	1.75	0.50
1:A:60:GLU:H	1:A:60:GLU:CD	2.15	0.49
1:A:359:GLN:HE22	1:A:367:GLU:H	1.58	0.49
1:A:359:GLN:NE2	1:A:367:GLU:H	2.11	0.49
1:A:74:GLU:O	1:A:78:GLU:HG3	2.12	0.49
1:B:281:ASN:ND2	1:B:283:GLU:H	2.09	0.49
1:A:254:TYR:CD2	5:A:801:PYC:H41	2.48	0.48
1:A:359:GLN:HE21	1:A:366:THR:HA	1.78	0.48
1:B:92:PHE:HB3	1:B:138:ALA:HB2	1.95	0.48
1:A:134:GLU:OE2	1:B:381:LYS:HE3	2.14	0.48
1:B:53:HIS:ND1	2:B:812:PO4:O1	2.47	0.48
1:A:163:ARG:HG3	6:A:849:HOH:O	2.13	0.48
1:A:135:ASN:H	1:A:135:ASN:ND2	2.12	0.48
1:A:281:ASN:ND2	1:A:283:GLU:H	2.08	0.48
1:B:374:SER:O	1:B:377:ARG:HG2	2.14	0.47
1:B:127:TRP:CD1	1:B:242:PRO:HD3	2.50	0.47
1:A:163:ARG:HG2	1:A:163:ARG:HH11	1.78	0.47
1:B:74:GLU:O	1:B:78:GLU:HG3	2.15	0.47
1:A:347:PHE:H	4:A:400:FAD:H2'	1.79	0.47
1:B:163:ARG:HG2	1:B:163:ARG:HH11	1.80	0.47
1:A:163:ARG:NE	6:A:849:HOH:O	2.49	0.46
1:B:359:GLN:HE22	1:B:367:GLU:H	1.62	0.46
1:B:135:ASN:H	1:B:135:ASN:ND2	2.12	0.46
1:B:359:GLN:NE2	1:B:367:GLU:H	2.13	0.46
1:B:359:GLN:HE21	1:B:366:THR:HA	1.80	0.46
1:A:52:ARG:HH21	5:A:801:PYC:C1	2.29	0.46
1:B:86:LYS:NZ	1:B:143:ASN:HD22	2.14	0.46
1:A:92:PHE:HB3	1:A:138:ALA:HB2	1.98	0.46
1:B:244:PHE:CZ	1:B:255:GLY:HA3	2.51	0.46
1:B:184:LYS:NZ	1:B:186:GLU:OE2	2.47	0.45
1:B:199:VAL:CG1	1:B:201:MSE:HE2	2.47	0.45
1:A:124:ASN:ND2	1:A:132:VAL:HG22	2.32	0.45
1:B:141:GLU:HG3	2:B:812:PO4:O2	2.17	0.45
1:B:49:ARG:HD2	4:B:400:FAD:C4X	2.47	0.45
1:A:59:ARG:HG3	6:A:886:HOH:O	2.17	0.44

*Continued on next page...*

*Continued from previous page...*

Atom-1	Atom-2	Interatomic distance (Å)	Clash overlap (Å)
1:A:274:LYS:NZ	6:A:918:HOH:O	2.40	0.43
1:A:67:ARG:HH11	1:A:70:GLU:CD	2.21	0.43
1:A:199:VAL:CG1	1:A:201:MSE:HE2	2.48	0.43
1:B:52:ARG:HH21	5:B:811:PYC:C1	2.31	0.43
1:B:94:PRO:HB2	1:B:97:GLU:HB2	2.00	0.43
1:B:381:LYS:HE2	6:B:968:HOH:O	2.19	0.43
1:A:49:ARG:HD2	4:A:400:FAD:C4X	2.49	0.43
1:B:124:ASN:ND2	1:B:132:VAL:HG22	2.33	0.43
1:B:219:GLN:N	6:B:1021:HOH:O	2.44	0.43
1:A:94:PRO:HB2	1:A:97:GLU:HB2	2.01	0.43
1:A:281:ASN:HD22	1:A:281:ASN:C	2.22	0.42
1:B:163:ARG:NE	6:B:856:HOH:O	2.53	0.42
1:B:203:ALA:HA	1:B:318:THR:OG1	2.19	0.41
1:B:347:PHE:H	4:B:400:FAD:H2'	1.85	0.41
1:B:319:LYS:HB2	6:B:1021:HOH:O	2.19	0.41
1:A:320:THR:HG23	1:A:341:GLY:HA3	2.03	0.41
1:A:347:PHE:HB2	4:A:400:FAD:H2'	2.02	0.41
1:A:53:HIS:HB2	1:A:141:GLU:OE2	2.21	0.41
1:A:203:ALA:HA	1:A:318:THR:OG1	2.21	0.41
1:B:281:ASN:HD22	1:B:281:ASN:C	2.24	0.41
1:B:141:GLU:OE2	2:B:812:PO4:O3	2.38	0.41
1:A:141:GLU:CD	1:A:144:SER:OG	2.59	0.40
1:B:275:ILE:HD12	1:B:275:ILE:C	2.42	0.40
1:B:320:THR:HG23	1:B:341:GLY:HA3	2.03	0.40
1:B:141:GLU:OE1	1:B:144:SER:OG	2.37	0.40
1:A:92:PHE:C	1:A:92:PHE:CD1	2.95	0.40
1:B:223:GLN:HG3	1:B:317:TYR:CG	2.56	0.40

There are no symmetry-related clashes.

## 5.3 Torsion angles [i](#)

### 5.3.1 Protein backbone [i](#)

In the following table, the Percentiles column shows the percent Ramachandran outliers of the chain as a percentile score with respect to all X-ray entries followed by that with respect to entries of similar resolution.

The Analysed column shows the number of residues for which the backbone conformation was analysed, and the total number of residues.

Mol	Chain	Analysed	Favoured	Allowed	Outliers	Percentiles	
1	A	385/389 (99%)	378 (98%)	7 (2%)	0	100	100
1	B	385/389 (99%)	378 (98%)	7 (2%)	0	100	100
All	All	770/778 (99%)	756 (98%)	14 (2%)	0	100	100

There are no Ramachandran outliers to report.

### 5.3.2 Protein sidechains ⓘ

In the following table, the Percentiles column shows the percent sidechain outliers of the chain as a percentile score with respect to all X-ray entries followed by that with respect to entries of similar resolution.

The Analysed column shows the number of residues for which the sidechain conformation was analysed, and the total number of residues.

Mol	Chain	Analysed	Rotameric	Outliers	Percentiles	
1	A	324/319 (102%)	315 (97%)	9 (3%)	38	40
1	B	324/319 (102%)	314 (97%)	10 (3%)	35	36
All	All	648/638 (102%)	629 (97%)	19 (3%)	36	39

All (19) residues with a non-rotameric sidechain are listed below:

Mol	Chain	Res	Type
1	A	55	TYR
1	A	60	GLU
1	A	118	LEU
1	A	135	ASN
1	A	208	LEU
1	A	281	ASN
1	A	315	CYS
1	A	384	LEU
1	A	385	GLN
1	B	47	ASP
1	B	55	TYR
1	B	60	GLU
1	B	118	LEU
1	B	208	LEU
1	B	281	ASN
1	B	306	ASN
1	B	315	CYS
1	B	384	LEU

*Continued on next page...*

*Continued from previous page...*

Mol	Chain	Res	Type
1	B	385	GLN

Sometimes sidechains can be flipped to improve hydrogen bonding and reduce clashes. All (26) such sidechains are listed below:

Mol	Chain	Res	Type
1	A	21	GLN
1	A	41	ASN
1	A	124	ASN
1	A	135	ASN
1	A	143	ASN
1	A	189	ASN
1	A	205	ASN
1	A	213	ASN
1	A	219	GLN
1	A	281	ASN
1	A	293	ASN
1	A	306	ASN
1	A	359	GLN
1	B	21	GLN
1	B	41	ASN
1	B	111	HIS
1	B	124	ASN
1	B	135	ASN
1	B	143	ASN
1	B	189	ASN
1	B	205	ASN
1	B	213	ASN
1	B	281	ASN
1	B	293	ASN
1	B	306	ASN
1	B	359	GLN

### 5.3.3 RNA ⓘ

There are no RNA molecules in this entry.

## 5.4 Non-standard residues in protein, DNA, RNA chains ⓘ

There are no non-standard protein/DNA/RNA residues in this entry.

## 5.5 Carbohydrates [i](#)

There are no oligosaccharides in this entry.

## 5.6 Ligand geometry [i](#)

Of 10 ligands modelled in this entry, 2 are monoatomic - leaving 8 for Mogul analysis.

In the following table, the Counts columns list the number of bonds (or angles) for which Mogul statistics could be retrieved, the number of bonds (or angles) that are observed in the model and the number of bonds (or angles) that are defined in the Chemical Component Dictionary. The Link column lists molecule types, if any, to which the group is linked. The Z score for a bond length (or angle) is the number of standard deviations the observed value is removed from the expected value. A bond length (or angle) with  $|Z| > 2$  is considered an outlier worth inspection. RMSZ is the root-mean-square of all Z scores of the bond lengths (or angles).

Mol	Type	Chain	Res	Link	Bond lengths			Bond angles		
					Counts	RMSZ	# Z  > 2	Counts	RMSZ	# Z  > 2
2	PO4	B	813	-	4,4,4	1.38	0	6,6,6	0.48	0
5	PYC	B	811	-	8,8,8	1.90	1 (12%)	8,10,10	1.36	1 (12%)
2	PO4	A	803	-	4,4,4	1.42	0	6,6,6	0.48	0
5	PYC	A	801	-	8,8,8	1.84	2 (25%)	8,10,10	1.48	3 (37%)
4	FAD	A	400	1	54,58,58	2.65	17 (31%)	71,89,89	1.78	16 (22%)
5	PYC	B	815	-	8,8,8	1.87	2 (25%)	8,10,10	1.39	1 (12%)
4	FAD	B	400	1	54,58,58	2.84	20 (37%)	71,89,89	1.80	17 (23%)
2	PO4	B	812	-	4,4,4	1.55	0	6,6,6	0.46	0

In the following table, the Chirals column lists the number of chiral outliers, the number of chiral centers analysed, the number of these observed in the model and the number defined in the Chemical Component Dictionary. Similar counts are reported in the Torsion and Rings columns. '-' means no outliers of that kind were identified.

Mol	Type	Chain	Res	Link	Chirals	Torsions	Rings
5	PYC	B	811	-	-	0/2/4/4	0/1/1/1
5	PYC	A	801	-	-	0/2/4/4	0/1/1/1
4	FAD	A	400	1	-	1/30/50/50	0/6/6/6
5	PYC	B	815	-	-	0/2/4/4	0/1/1/1
4	FAD	B	400	1	-	1/30/50/50	0/6/6/6

All (42) bond length outliers are listed below:

Mol	Chain	Res	Type	Atoms	Z	Observed(Å)	Ideal(Å)
4	B	400	FAD	PA-O3P	9.99	1.70	1.59

*Continued on next page...*



*Continued from previous page...*

Mol	Chain	Res	Type	Atoms	Z	Observed(Å)	Ideal(Å)
4	A	400	FAD	P-O3P	8.88	1.69	1.59
4	B	400	FAD	P-O3P	8.86	1.69	1.59
4	B	400	FAD	C4'-C3'	8.32	1.68	1.53
4	A	400	FAD	C4'-C3'	8.27	1.67	1.53
4	A	400	FAD	PA-O3P	7.91	1.68	1.59
4	B	400	FAD	C8M-C8	-5.01	1.41	1.51
4	A	400	FAD	C8M-C8	-4.70	1.42	1.51
5	B	811	PYC	C2-C1	-4.66	1.42	1.50
4	B	400	FAD	C4X-N5	4.26	1.39	1.30
5	A	801	PYC	C2-C1	-4.22	1.43	1.50
5	B	815	PYC	C2-C1	-4.18	1.43	1.50
4	A	400	FAD	C2A-N3A	4.10	1.38	1.32
4	A	400	FAD	C4X-N5	4.02	1.39	1.30
4	B	400	FAD	C2A-N3A	3.96	1.38	1.32
4	B	400	FAD	C6-C5X	3.65	1.45	1.40
4	B	400	FAD	O4'-C4'	-3.53	1.35	1.43
4	A	400	FAD	O4'-C4'	-3.03	1.37	1.43
4	A	400	FAD	C1'-N10	2.97	1.55	1.47
4	A	400	FAD	C6-C5X	2.89	1.44	1.40
4	A	400	FAD	O2'-C2'	2.88	1.49	1.43
4	B	400	FAD	C4-N3	2.83	1.44	1.38
4	A	400	FAD	C4-N3	2.82	1.44	1.38
4	A	400	FAD	C8A-N7A	-2.70	1.29	1.34
4	A	400	FAD	C1B-N9A	-2.64	1.43	1.49
4	B	400	FAD	C1'-N10	2.58	1.54	1.47
4	B	400	FAD	O2'-C2'	2.52	1.48	1.43
4	B	400	FAD	C8A-N7A	-2.52	1.30	1.34
4	B	400	FAD	P-O2P	-2.47	1.43	1.55
4	A	400	FAD	P-O2P	-2.46	1.44	1.55
4	B	400	FAD	C1B-N9A	-2.37	1.44	1.49
4	A	400	FAD	C9A-C5X	2.30	1.44	1.41
5	B	815	PYC	O8-C1	-2.28	1.23	1.30
4	B	400	FAD	C9-C8	-2.26	1.36	1.39
4	B	400	FAD	C10-N1	2.25	1.37	1.33
4	B	400	FAD	C8-C7	2.22	1.46	1.40
4	B	400	FAD	C2'-C3'	2.20	1.57	1.53
4	A	400	FAD	C8-C7	2.19	1.46	1.40
5	A	801	PYC	O8-C1	-2.12	1.24	1.30
4	B	400	FAD	C9A-N10	2.09	1.44	1.41
4	B	400	FAD	C9A-C5X	2.08	1.44	1.41
4	A	400	FAD	C9A-N10	2.00	1.44	1.41

All (38) bond angle outliers are listed below:

Mol	Chain	Res	Type	Atoms	Z	Observed(°)	Ideal(°)
4	B	400	FAD	O4B-C1B-N9A	6.84	117.81	108.75
4	A	400	FAD	O4B-C1B-N9A	6.60	117.49	108.75
4	B	400	FAD	C5'-C4'-C3'	-4.62	103.51	112.22
4	A	400	FAD	C4'-C3'-C2'	-4.51	106.06	113.57
4	A	400	FAD	C5'-C4'-C3'	-4.46	103.81	112.22
4	A	400	FAD	O4'-C4'-C5'	4.36	119.59	109.99
4	B	400	FAD	C4'-C3'-C2'	-4.17	106.63	113.57
4	B	400	FAD	O4'-C4'-C5'	4.05	118.91	109.99
4	B	400	FAD	O3P-P-O1P	-3.45	100.31	110.70
4	A	400	FAD	O3P-P-O1P	-3.11	101.36	110.70
4	B	400	FAD	O2P-P-O1P	3.11	126.90	112.44
4	B	400	FAD	O2A-PA-O3P	-3.09	98.92	107.27
4	B	400	FAD	C8M-C8-C9	-3.09	114.13	119.57
4	A	400	FAD	O2P-P-O1P	3.03	126.56	112.44
4	A	400	FAD	C8M-C8-C9	-3.02	114.25	119.57
4	A	400	FAD	O2A-PA-O3P	-2.98	99.22	107.27
4	B	400	FAD	C4-C4X-N5	-2.86	114.25	118.21
5	A	801	PYC	C5-N6-C2	2.65	111.39	104.44
4	A	400	FAD	C4-C4X-N5	-2.61	114.60	118.21
4	B	400	FAD	O4'-C4'-C3'	2.60	115.34	109.25
5	B	811	PYC	C5-N6-C2	2.42	110.78	104.44
4	A	400	FAD	N3A-C2A-N1A	-2.40	125.42	128.67
5	B	815	PYC	C5-N6-C2	2.39	110.70	104.44
4	A	400	FAD	C5X-N5-C4X	-2.33	114.32	118.09
4	B	400	FAD	O5'-C5'-C4'	-2.31	103.20	109.36
4	A	400	FAD	O2A-PA-O1A	2.30	123.14	112.44
4	B	400	FAD	O2A-PA-O1A	2.26	122.96	112.44
4	B	400	FAD	N3A-C2A-N1A	-2.24	125.63	128.67
4	B	400	FAD	C9-C8-C7	2.24	122.97	119.69
4	A	400	FAD	C1'-C2'-C3'	-2.24	103.59	109.66
4	B	400	FAD	C1'-C2'-C3'	-2.20	103.68	109.66
4	A	400	FAD	O4'-C4'-C3'	2.19	114.39	109.25
4	A	400	FAD	O5'-C5'-C4'	-2.16	103.59	109.36
4	B	400	FAD	C5X-N5-C4X	-2.11	114.68	118.09
5	A	801	PYC	C4-C5-N6	-2.09	105.84	111.28
4	A	400	FAD	C9-C8-C7	2.07	122.72	119.69
4	B	400	FAD	C4B-O4B-C1B	2.04	111.79	109.92
5	A	801	PYC	C3-C2-C1	2.01	133.81	128.10

There are no chirality outliers.

All (2) torsion outliers are listed below:

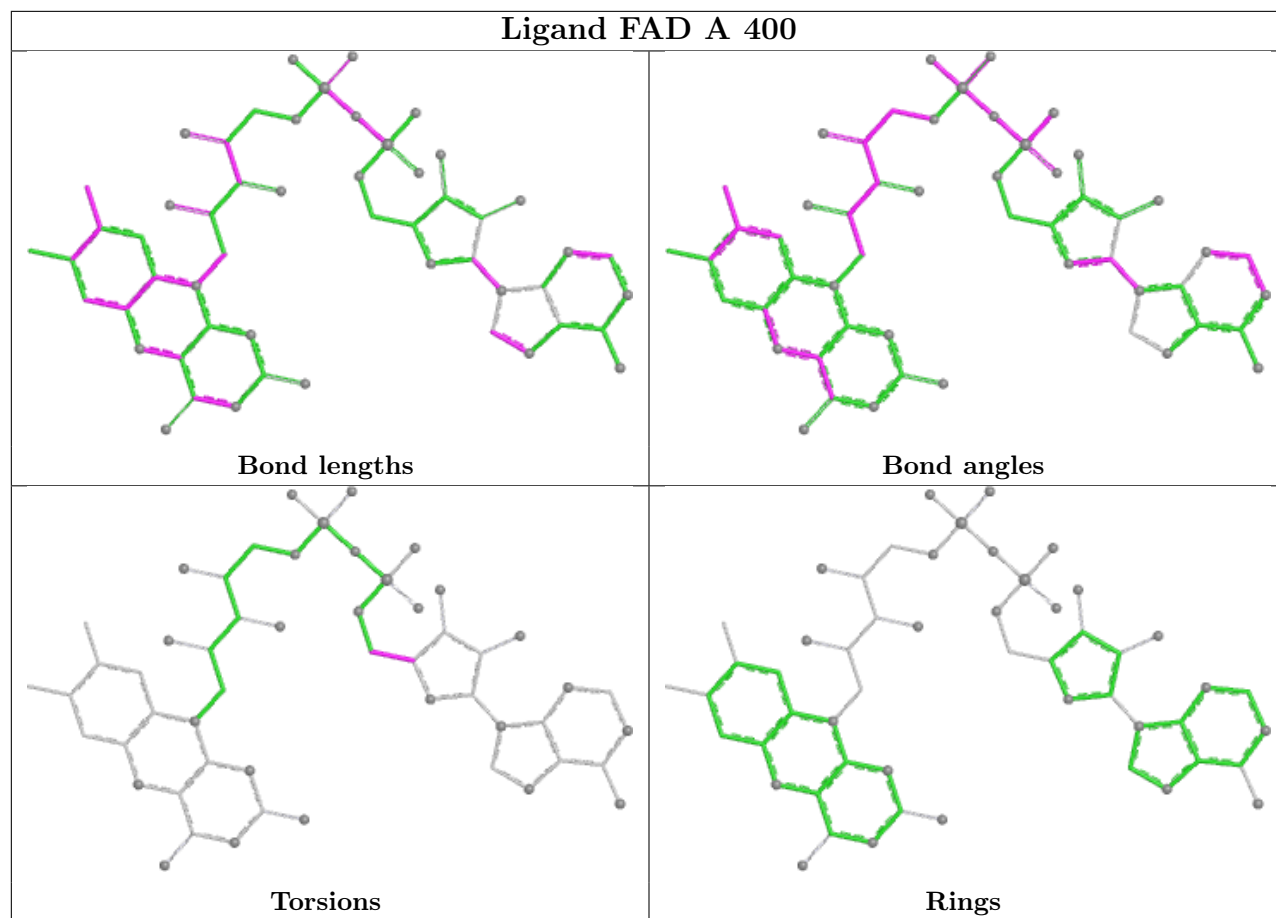
Mol	Chain	Res	Type	Atoms
4	B	400	FAD	O4B-C4B-C5B-O5B
4	A	400	FAD	O4B-C4B-C5B-O5B

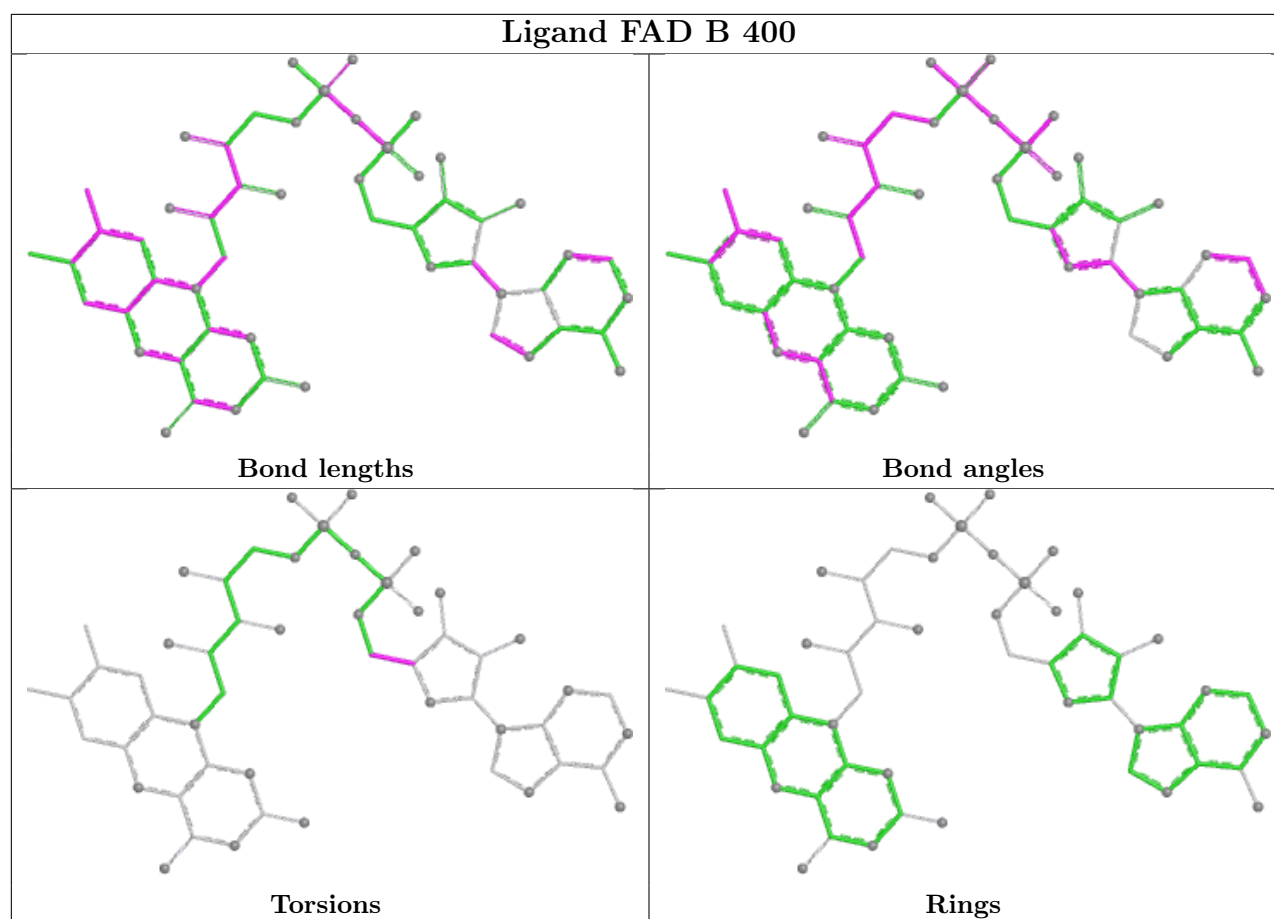
There are no ring outliers.

5 monomers are involved in 15 short contacts:

Mol	Chain	Res	Type	Clashes	Symm-Clashes
5	B	811	PYC	1	0
5	A	801	PYC	3	0
4	A	400	FAD	3	0
4	B	400	FAD	2	0
2	B	812	PO4	6	0

The following is a two-dimensional graphical depiction of Mogul quality analysis of bond lengths, bond angles, torsion angles, and ring geometry for all instances of the Ligand of Interest. In addition, ligands with molecular weight > 250 and outliers as shown on the validation Tables will also be included. For torsion angles, if less than 5% of the Mogul distribution of torsion angles is within 10 degrees of the torsion angle in question, then that torsion angle is considered an outlier. Any bond that is central to one or more torsion angles identified as an outlier by Mogul will be highlighted in the graph. For rings, the root-mean-square deviation (RMSD) between the ring in question and similar rings identified by Mogul is calculated over all ring torsion angles. If the average RMSD is greater than 60 degrees and the minimal RMSD between the ring in question and any Mogul-identified rings is also greater than 60 degrees, then that ring is considered an outlier. The outliers are highlighted in purple. The color gray indicates Mogul did not find sufficient equivalents in the CSD to analyse the geometry.





## 5.7 Other polymers [i](#)

There are no such residues in this entry.

## 5.8 Polymer linkage issues [i](#)

There are no chain breaks in this entry.

## 6 Fit of model and data [i](#)

### 6.1 Protein, DNA and RNA chains [i](#)

In the following table, the column labelled ‘#RSRZ > 2’ contains the number (and percentage) of RSRZ outliers, followed by percent RSRZ outliers for the chain as percentile scores relative to all X-ray entries and entries of similar resolution. The OWAB column contains the minimum, median, 95<sup>th</sup> percentile and maximum values of the occupancy-weighted average B-factor per residue. The column labelled ‘Q < 0.9’ lists the number of (and percentage) of residues with an average occupancy less than 0.9.

Mol	Chain	Analysed	<RSRZ>	#RSRZ>2	OWAB(Å <sup>2</sup> )	Q<0.9
1	A	378/389 (97%)	-0.56	5 (1%) 74 73	13, 24, 39, 68	2 (0%)
1	B	378/389 (97%)	-0.52	3 (0%) 82 82	12, 24, 40, 67	2 (0%)
All	All	756/778 (97%)	-0.54	8 (1%) 77 76	12, 24, 40, 68	4 (0%)

All (8) RSRZ outliers are listed below:

Mol	Chain	Res	Type	RSRZ
1	A	385	GLN	3.3
1	B	385	GLN	3.1
1	B	1	SER	2.9
1	A	2	THR	2.5
1	A	384	LEU	2.1
1	A	383	SER	2.1
1	B	190	GLY	2.0
1	A	368	HIS	2.0

### 6.2 Non-standard residues in protein, DNA, RNA chains [i](#)

There are no non-standard protein/DNA/RNA residues in this entry.

### 6.3 Carbohydrates [i](#)

There are no monosaccharides in this entry.

### 6.4 Ligands [i](#)

In the following table, the Atoms column lists the number of modelled atoms in the group and the number defined in the chemical component dictionary. The B-factors column lists the minimum,

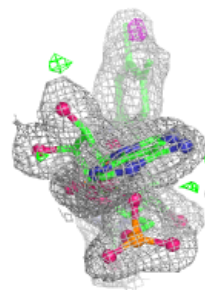
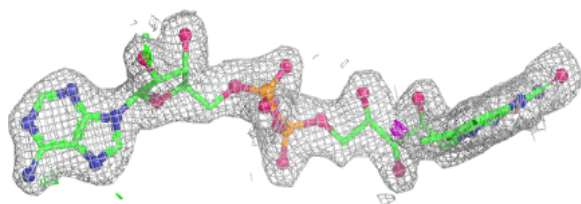
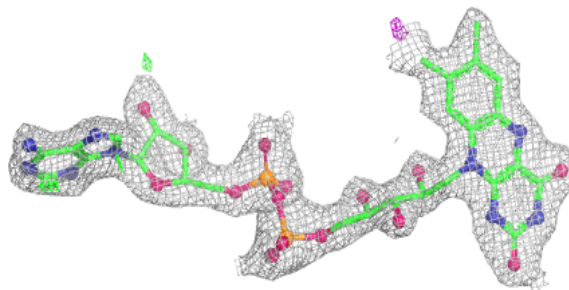
median, 95<sup>th</sup> percentile and maximum values of B factors of atoms in the group. The column labelled 'Q< 0.9' lists the number of atoms with occupancy less than 0.9.

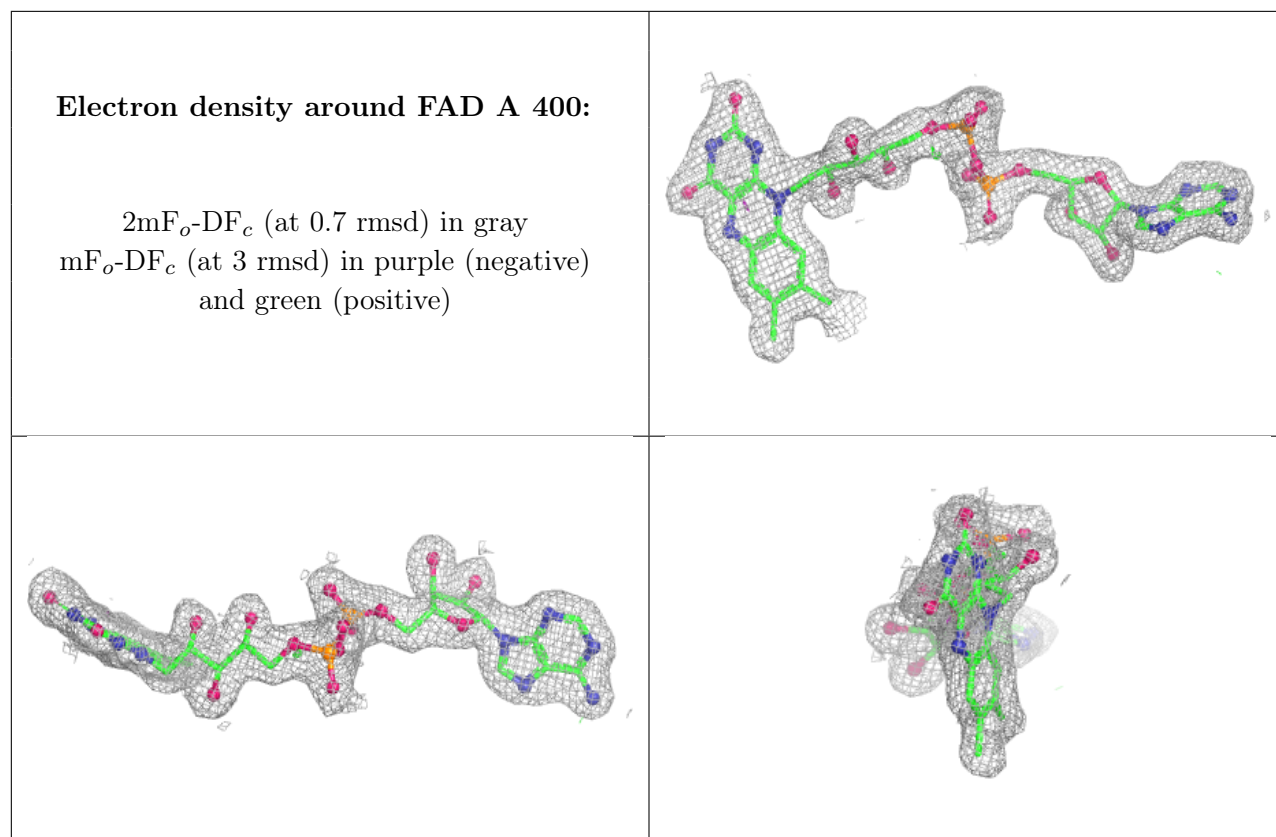
Mol	Type	Chain	Res	Atoms	RSCC	RSR	B-factors(Å <sup>2</sup> )	Q<0.9
2	PO4	A	803	5/5	0.80	0.15	46,48,50,52	0
5	PYC	B	815	8/8	0.81	0.14	41,44,44,45	0
2	PO4	B	813	5/5	0.84	0.19	45,46,49,51	0
2	PO4	B	812	5/5	0.90	0.13	43,46,47,47	0
5	PYC	B	811	8/8	0.92	0.08	25,26,27,28	0
5	PYC	A	801	8/8	0.93	0.06	20,23,26,26	0
4	FAD	B	400	53/53	0.97	0.05	14,19,23,25	0
4	FAD	A	400	53/53	0.97	0.04	13,16,20,22	0
3	CL	B	814	1/1	0.99	0.02	20,20,20,20	0
3	CL	A	804	1/1	0.99	0.02	20,20,20,20	0

The following is a graphical depiction of the model fit to experimental electron density of all instances of the Ligand of Interest. In addition, ligands with molecular weight > 250 and outliers as shown on the geometry validation Tables will also be included. Each fit is shown from different orientation to approximate a three-dimensional view.

#### Electron density around FAD B 400:

2mF<sub>o</sub>-DF<sub>c</sub> (at 0.7 rmsd) in gray  
mF<sub>o</sub>-DF<sub>c</sub> (at 3 rmsd) in purple (negative)  
and green (positive)





## 6.5 Other polymers [i](#)

There are no such residues in this entry.