



wwPDB X-ray Structure Validation Summary Report ⓘ

Sep 29, 2024 – 04:38 AM EDT

PDB ID : 1EBL
Title : THE 1.8 Å CRYSTAL STRUCTURE AND ACTIVE SITE ARCHITECTURE OF BETA-KETOACYL-[ACYL CARRIER PROTEIN] SYNTHASE III (FABH) FROM ESCHERICHIA COLI
Authors : Davies, C.; Heath, R.J.; White, S.W.; Rock, C.O.
Deposited on : 2000-01-24
Resolution : 1.80 Å(reported)

This is a wwPDB X-ray Structure Validation Summary Report for a publicly released PDB entry.

We welcome your comments at validation@mail.wwpdb.org

A user guide is available at

<https://www.wwpdb.org/validation/2017/XrayValidationReportHelp>

with specific help available everywhere you see the ⓘ symbol.

The types of validation reports are described at

<http://www.wwpdb.org/validation/2017/FAQs#types>.

The following versions of software and data (see [references ⓘ](#)) were used in the production of this report:

MolProbity	:	4.02b-467
Mogul	:	2022.3.0, CSD as543be (2022)
Xtriage (Phenix)	:	NOT EXECUTED
EDS	:	NOT EXECUTED
buster-report	:	1.1.7 (2018)
Percentile statistics	:	20231227.v01 (using entries in the PDB archive December 27th 2023)
Ideal geometry (proteins)	:	Engh & Huber (2001)
Ideal geometry (DNA, RNA)	:	Parkinson et al. (1996)
Validation Pipeline (wwPDB-VP)	:	2.39

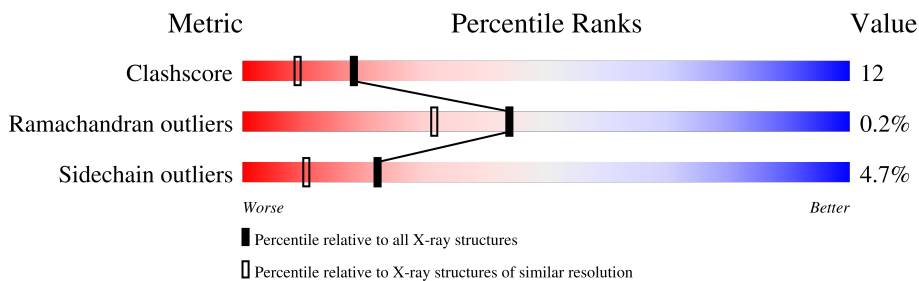
1 Overall quality at a glance

The following experimental techniques were used to determine the structure:

X-RAY DIFFRACTION

The reported resolution of this entry is 1.80 Å.



Percentile scores (ranging between 0-100) for global validation metrics of the entry are shown in the following graphic. The table shows the number of entries on which the scores are based.



Metric	Whole archive (#Entries)	Similar resolution (#Entries, resolution range(Å))
Clashscore	180529	8162 (1.80-1.80)
Ramachandran outliers	177936	8077 (1.80-1.80)
Sidechain outliers	177891	8076 (1.80-1.80)

The table below summarises the geometric issues observed across the polymeric chains and their fit to the electron density. The red, orange, yellow and green segments of the lower bar indicate the fraction of residues that contain outliers for ≥ 3 , 2, 1 and 0 types of geometric quality criteria respectively. A grey segment represents the fraction of residues that are not modelled. The numeric value for each fraction is indicated below the corresponding segment, with a dot representing fractions $\leq 5\%$.

Note EDS was not executed.

Mol	Chain	Length	Quality of chain
1	A	317	 82% 13% . .
1	B	317	 82% 15% . .

2 Entry composition

There are 3 unique types of molecules in this entry. The entry contains 5502 atoms, of which 0 are hydrogens and 0 are deuteriums.

In the tables below, the ZeroOcc column contains the number of atoms modelled with zero occupancy, the AltConf column contains the number of residues with at least one atom in alternate conformation and the Trace column contains the number of residues modelled with at most 2 atoms.

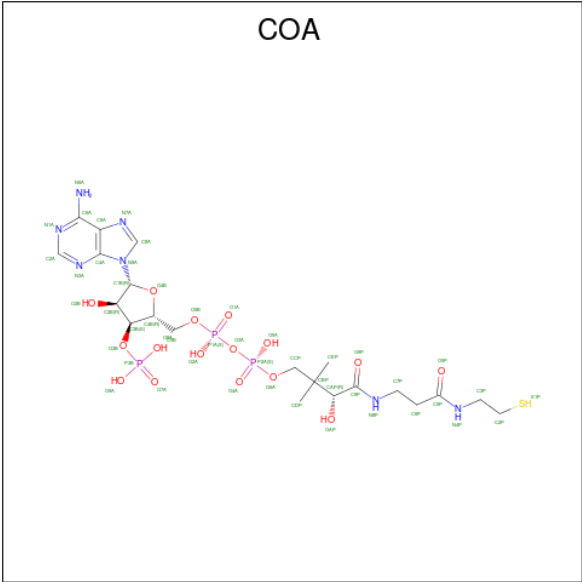
- Molecule 1 is a protein called BETA-KETOACYL-ACP SYNTHASE III.

Mol	Chain	Residues	Atoms						ZeroOcc	AltConf	Trace
1	A	317	Total	C	N	O	S	Se	0	0	0
			2351	1470	408	460	5	8			
1	B	317	Total	C	N	O	S	Se	0	0	0
			2351	1470	408	460	5	8			

There are 16 discrepancies between the modelled and reference sequences:

Chain	Residue	Modelled	Actual	Comment	Reference
A	1	MSE	MET	modified residue	UNP P0A6R0
A	25	MSE	MET	modified residue	UNP P0A6R0
A	54	MSE	MET	modified residue	UNP P0A6R0
A	65	MSE	MET	modified residue	UNP P0A6R0
A	97	MSE	MET	modified residue	UNP P0A6R0
A	207	MSE	MET	modified residue	UNP P0A6R0
A	260	MSE	MET	modified residue	UNP P0A6R0
A	262	MSE	MET	modified residue	UNP P0A6R0
B	1	MSE	MET	modified residue	UNP P0A6R0
B	25	MSE	MET	modified residue	UNP P0A6R0
B	54	MSE	MET	modified residue	UNP P0A6R0
B	65	MSE	MET	modified residue	UNP P0A6R0
B	97	MSE	MET	modified residue	UNP P0A6R0
B	207	MSE	MET	modified residue	UNP P0A6R0
B	260	MSE	MET	modified residue	UNP P0A6R0
B	262	MSE	MET	modified residue	UNP P0A6R0

- Molecule 2 is COENZYME A (three-letter code: COA) (formula: C₂₁H₃₆N₇O₁₆P₃S).



Mol	Chain	Residues	Atoms						ZeroOcc	AltConf
2	A	1	Total	C	N	O	P	S	0	0
			48	21	7	16	3	1		
2	B	1	Total	C	N	O	P	S	0	0
			48	21	7	16	3	1		

- Molecule 3 is water.

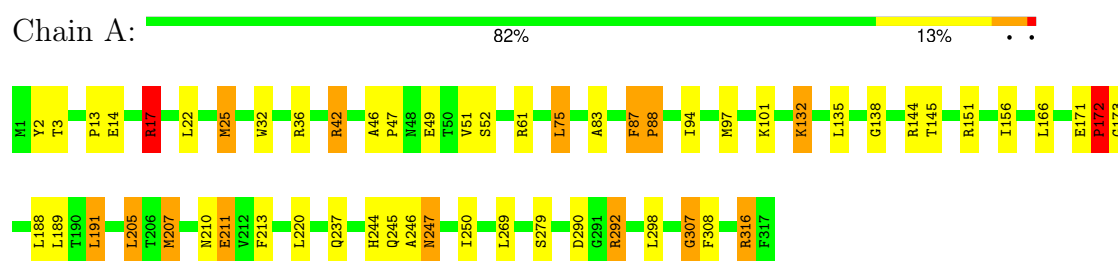
Mol	Chain	Residues	Atoms		ZeroOcc	AltConf
3	A	353	Total	O	0	0
			353	353		
3	B	351	Total	O	0	0
			351	351		

3 Residue-property plots

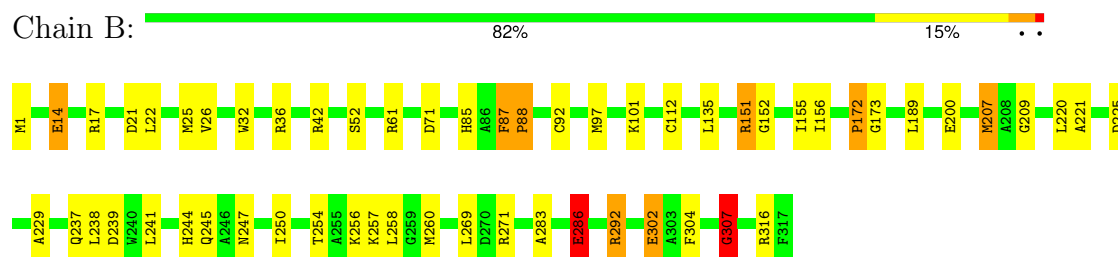
These plots are drawn for all protein, RNA, DNA and oligosaccharide chains in the entry. The first graphic for a chain summarises the proportions of the various outlier classes displayed in the second graphic. The second graphic shows the sequence view annotated by issues in geometry. Residues are color-coded according to the number of geometric quality criteria for which they contain at least one outlier: green = 0, yellow = 1, orange = 2 and red = 3 or more. Stretches of 2 or more consecutive residues without any outlier are shown as a green connector. Residues present in the sample, but not in the model, are shown in grey.

Note EDS was not executed.

• Molecule 1: BETA-KETOACYL-ACP SYNTHASE III



• Molecule 1: BETA-KETOACYL-ACP SYNTHASE III



4 Data and refinement statistics

Xtriage (Phenix) and EDS were not executed - this section is therefore incomplete.

Property	Value	Source
Space group	P 21 21 21	Depositor
Cell constants a, b, c, α , β , γ	63.13Å 64.30Å 165.92Å 90.00° 90.00° 90.00°	Depositor
Resolution (Å)	20.00 – 1.80	Depositor
% Data completeness (in resolution range)	97.2 (20.00-1.80)	Depositor
R_{merge}	0.06	Depositor
R_{sym}	(Not available)	Depositor
Refinement program	REFMAC	Depositor
R, R_{free}	0.187 , 0.225	Depositor
Estimated twinning fraction	No twinning to report.	Xtriage
Total number of atoms	5502	wwPDB-VP
Average B, all atoms (Å ²)	19.0	wwPDB-VP

5 Model quality

5.1 Standard geometry

Bond lengths and bond angles in the following residue types are not validated in this section: COA

The Z score for a bond length (or angle) is the number of standard deviations the observed value is removed from the expected value. A bond length (or angle) with $|Z| > 5$ is considered an outlier worth inspection. RMSZ is the root-mean-square of all Z scores of the bond lengths (or angles).

Mol	Chain	Bond lengths		Bond angles	
		RMSZ	$\# Z > 5$	RMSZ	$\# Z > 5$
1	A	0.53	0/2383	1.52	26/3230 (0.8%)
1	B	0.65	5/2383 (0.2%)	1.45	26/3230 (0.8%)
All	All	0.59	5/4766 (0.1%)	1.49	52/6460 (0.8%)

Chiral center outliers are detected by calculating the chiral volume of a chiral center and verifying if the center is modelled as a planar moiety or with the opposite hand. A planarity outlier is detected by checking planarity of atoms in a peptide group, atoms in a mainchain group or atoms of a sidechain that are expected to be planar.

Mol	Chain	#Chirality outliers	#Planarity outliers
1	A	0	4
1	B	0	5
All	All	0	9

All (5) bond length outliers are listed below:

Mol	Chain	Res	Type	Atoms	Z	Observed(Å)	Ideal(Å)
1	B	286	GLU	CB-CG	9.36	1.70	1.52
1	B	286	GLU	CD-OE2	-6.63	1.18	1.25
1	B	286	GLU	CG-CD	6.44	1.61	1.51
1	B	286	GLU	CD-OE1	6.34	1.32	1.25
1	B	173	GLY	N-CA	-5.67	1.37	1.46

The worst 5 of 52 bond angle outliers are listed below:

Mol	Chain	Res	Type	Atoms	Z	Observed(°)	Ideal(°)
1	A	42	ARG	CD-NE-CZ	33.11	169.95	123.60
1	A	17	ARG	CD-NE-CZ	30.66	166.52	123.60
1	B	172	PRO	C-N-CA	24.66	174.09	122.30
1	B	17	ARG	CD-NE-CZ	17.13	147.58	123.60

Continued on next page...

Continued from previous page...

Mol	Chain	Res	Type	Atoms	Z	Observed(°)	Ideal(°)
1	A	207	MSE	CA-CB-CG	16.63	141.56	113.30

There are no chirality outliers.

5 of 9 planarity outliers are listed below:

Mol	Chain	Res	Type	Group
1	A	172	PRO	Mainchain,Peptide
1	A	87	PHE	Mainchain,Peptide
1	B	172	PRO	Peptide
1	B	307	GLY	Mainchain
1	B	87	PHE	Mainchain,Peptide

5.2 Too-close contacts

In the following table, the Non-H and H(model) columns list the number of non-hydrogen atoms and hydrogen atoms in the chain respectively. The H(added) column lists the number of hydrogen atoms added and optimized by MolProbity. The Clashes column lists the number of clashes within the asymmetric unit, whereas Symm-Clashes lists symmetry-related clashes.

Mol	Chain	Non-H	H(model)	H(added)	Clashes	Symm-Clashes
1	A	2351	0	2336	47	0
1	B	2351	0	2337	50	3
2	A	48	0	30	17	0
2	B	48	0	30	16	0
3	A	353	0	0	4	1
3	B	351	0	0	14	5
All	All	5502	0	4733	113	5

The all-atom clashscore is defined as the number of clashes found per 1000 atoms (including hydrogen atoms). The all-atom clashscore for this structure is 12.

The worst 5 of 113 close contacts within the same asymmetric unit are listed below, sorted by their clash magnitude.

Atom-1	Atom-2	Interatomic distance (Å)	Clash overlap (Å)
2:B:2350:COA:C7P	2:B:2350:COA:N8P	1.70	1.51
2:A:1350:COA:N8P	2:A:1350:COA:C7P	1.75	1.47
1:B:286:GLU:CB	3:B:2473:HOH:O	1.68	1.36
1:B:286:GLU:CG	3:B:2473:HOH:O	1.68	1.33
2:B:2350:COA:N8P	2:B:2350:COA:C6P	2.04	1.21

All (5) symmetry-related close contacts are listed below. The label for Atom-2 includes the symmetry operator and encoded unit-cell translations to be applied.

Atom-1	Atom-2	Interatomic distance (Å)	Clash overlap (Å)
3:B:2483:HOH:O	3:B:2684:HOH:O[3_755]	1.60	0.60
1:B:229:ALA:N	3:B:2352:HOH:O[3_755]	1.70	0.50
1:B:229:ALA:CA	3:B:2352:HOH:O[3_755]	1.87	0.33
3:A:1644:HOH:O	3:B:2434:HOH:O[4_445]	2.08	0.12
1:B:237:GLN:OE1	3:B:2656:HOH:O[3_755]	2.10	0.10

5.3 Torsion angles [i](#)

5.3.1 Protein backbone [i](#)

In the following table, the Percentiles column shows the percent Ramachandran outliers of the chain as a percentile score with respect to all X-ray entries followed by that with respect to entries of similar resolution.

The Analysed column shows the number of residues for which the backbone conformation was analysed, and the total number of residues.

Mol	Chain	Analysed	Favoured	Allowed	Outliers	Percentiles	
1	A	315/317 (99%)	303 (96%)	11 (4%)	1 (0%)	37	25
1	B	315/317 (99%)	307 (98%)	8 (2%)	0	100	100
All	All	630/634 (99%)	610 (97%)	19 (3%)	1 (0%)	44	31

All (1) Ramachandran outliers are listed below:

Mol	Chain	Res	Type
1	A	173	GLY

5.3.2 Protein sidechains [i](#)

In the following table, the Percentiles column shows the percent sidechain outliers of the chain as a percentile score with respect to all X-ray entries followed by that with respect to entries of similar resolution.

The Analysed column shows the number of residues for which the sidechain conformation was analysed, and the total number of residues.

Mol	Chain	Analysed	Rotameric	Outliers	Percentiles	
1	A	247/239 (103%)	233 (94%)	14 (6%)	17	7

Continued on next page...

Continued from previous page...

Mol	Chain	Analysed	Rotameric	Outliers	Percentiles	
1	B	247/239 (103%)	238 (96%)	9 (4%)	30	18
All	All	494/478 (103%)	471 (95%)	23 (5%)	22	10

5 of 23 residues with a non-rotameric sidechain are listed below:

Mol	Chain	Res	Type
1	B	26	VAL
1	B	101	LYS
1	B	71	ASP
1	B	135	LEU
1	A	132	LYS

Sometimes sidechains can be flipped to improve hydrogen bonding and reduce clashes. 5 of 13 such sidechains are listed below:

Mol	Chain	Res	Type
1	A	231	ASN
1	A	244	HIS
1	B	231	ASN
1	B	85	HIS
1	B	93	GLN

5.3.3 RNA [i](#)

There are no RNA molecules in this entry.

5.4 Non-standard residues in protein, DNA, RNA chains [i](#)

There are no non-standard protein/DNA/RNA residues in this entry.

5.5 Carbohydrates [i](#)

There are no oligosaccharides in this entry.

5.6 Ligand geometry [i](#)

2 ligands are modelled in this entry.

In the following table, the Counts columns list the number of bonds (or angles) for which Mogul statistics could be retrieved, the number of bonds (or angles) that are observed in the model and

the number of bonds (or angles) that are defined in the Chemical Component Dictionary. The Link column lists molecule types, if any, to which the group is linked. The Z score for a bond length (or angle) is the number of standard deviations the observed value is removed from the expected value. A bond length (or angle) with $|Z| > 2$ is considered an outlier worth inspection. RMSZ is the root-mean-square of all Z scores of the bond lengths (or angles).

Mol	Type	Chain	Res	Link	Bond lengths			Bond angles		
					Counts	RMSZ	# Z > 2	Counts	RMSZ	# Z > 2
2	COA	B	2350	-	43,50,50	3.20	11 (25%)	56,75,75	3.14	20 (35%)
2	COA	A	1350	-	43,50,50	3.42	8 (18%)	56,75,75	2.82	18 (32%)

In the following table, the Chirals column lists the number of chiral outliers, the number of chiral centers analysed, the number of these observed in the model and the number defined in the Chemical Component Dictionary. Similar counts are reported in the Torsion and Rings columns. '-' means no outliers of that kind were identified.

Mol	Type	Chain	Res	Link	Chirals	Torsions	Rings
2	COA	B	2350	-	-	24/44/64/64	0/3/3/3
2	COA	A	1350	-	-	23/44/64/64	0/3/3/3

The worst 5 of 19 bond length outliers are listed below:

Mol	Chain	Res	Type	Atoms	Z	Observed(Å)	Ideal(Å)
2	A	1350	COA	C7P-N8P	13.18	1.75	1.46
2	A	1350	COA	P1A-O3A	12.20	1.72	1.59
2	B	2350	COA	P1A-O3A	11.61	1.72	1.59
2	B	2350	COA	C7P-N8P	10.68	1.70	1.46
2	B	2350	COA	C2P-S1P	-10.26	1.39	1.80

The worst 5 of 38 bond angle outliers are listed below:

Mol	Chain	Res	Type	Atoms	Z	Observed(°)	Ideal(°)
2	B	2350	COA	C6P-C7P-N8P	-16.30	77.31	112.00
2	A	1350	COA	C6P-C7P-N8P	-15.89	78.19	112.00
2	B	2350	COA	O5P-C5P-C6P	-5.86	111.40	122.02
2	B	2350	COA	O5P-C5P-N4P	-5.69	111.87	123.03
2	B	2350	COA	N3A-C2A-N1A	-5.18	121.64	128.67

There are no chirality outliers.

5 of 47 torsion outliers are listed below:

Mol	Chain	Res	Type	Atoms
2	A	1350	COA	C5B-O5B-P1A-O2A

Continued on next page...

Continued from previous page...

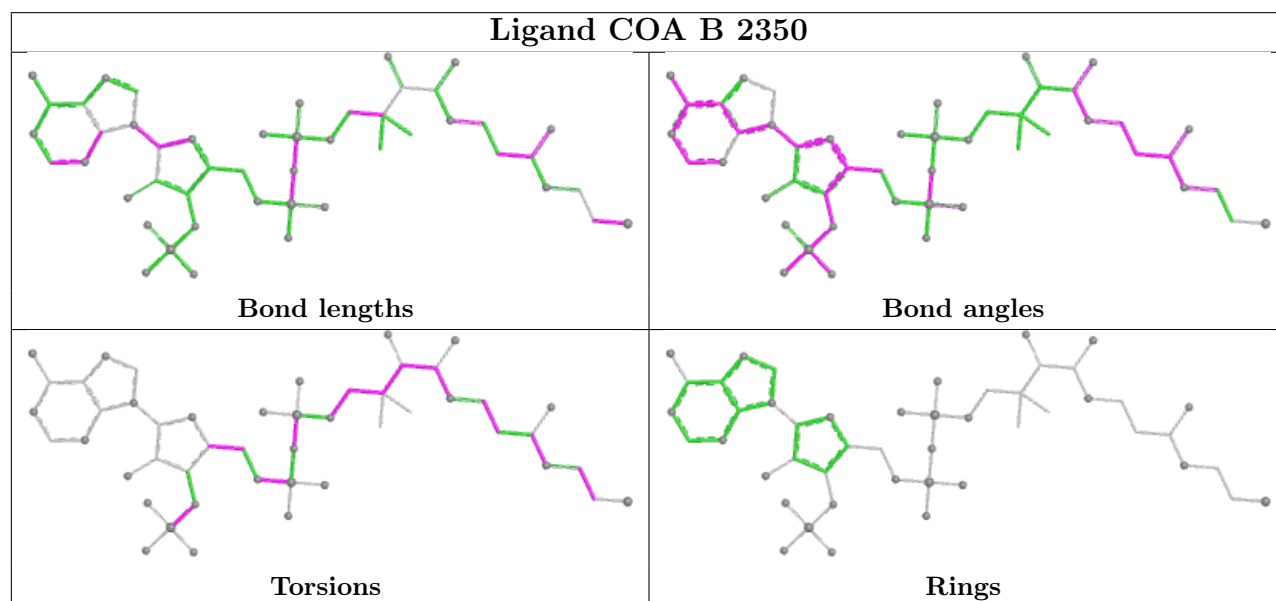
Mol	Chain	Res	Type	Atoms
2	A	1350	COA	C5B-O5B-P1A-O3A
2	A	1350	COA	CCP-O6A-P2A-O5A
2	A	1350	COA	CDP-CBP-CCP-O6A
2	A	1350	COA	OAP-CAP-CBP-CCP

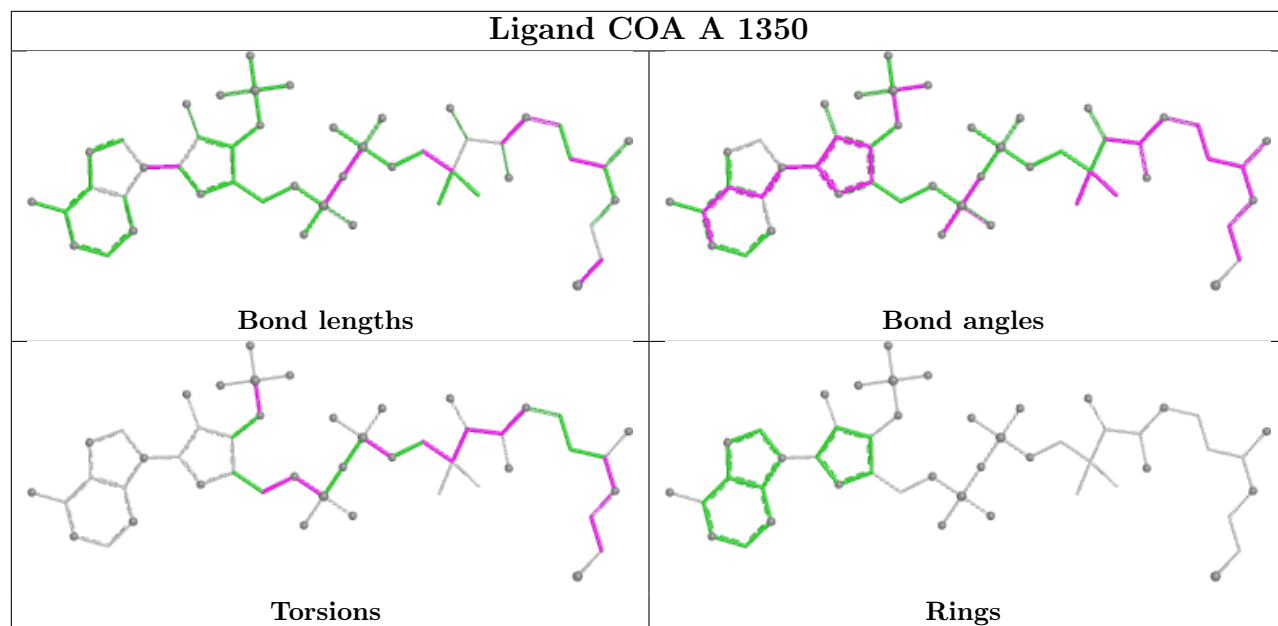
There are no ring outliers.

2 monomers are involved in 33 short contacts:

Mol	Chain	Res	Type	Clashes	Symm-Clashes
2	B	2350	COA	16	0
2	A	1350	COA	17	0

The following is a two-dimensional graphical depiction of Mogul quality analysis of bond lengths, bond angles, torsion angles, and ring geometry for all instances of the Ligand of Interest. In addition, ligands with molecular weight > 250 and outliers as shown on the validation Tables will also be included. For torsion angles, if less than 5% of the Mogul distribution of torsion angles is within 10 degrees of the torsion angle in question, then that torsion angle is considered an outlier. Any bond that is central to one or more torsion angles identified as an outlier by Mogul will be highlighted in the graph. For rings, the root-mean-square deviation (RMSD) between the ring in question and similar rings identified by Mogul is calculated over all ring torsion angles. If the average RMSD is greater than 60 degrees and the minimal RMSD between the ring in question and any Mogul-identified rings is also greater than 60 degrees, then that ring is considered an outlier. The outliers are highlighted in purple. The color gray indicates Mogul did not find sufficient equivalents in the CSD to analyse the geometry.





5.7 Other polymers [i](#)

There are no such residues in this entry.

5.8 Polymer linkage issues [i](#)

There are no chain breaks in this entry.

6 Fit of model and data [i](#)

6.1 Protein, DNA and RNA chains [i](#)

EDS was not executed - this section is therefore empty.

6.2 Non-standard residues in protein, DNA, RNA chains [i](#)

EDS was not executed - this section is therefore empty.

6.3 Carbohydrates [i](#)

EDS was not executed - this section is therefore empty.

6.4 Ligands [i](#)

EDS was not executed - this section is therefore empty.

6.5 Other polymers [i](#)

EDS was not executed - this section is therefore empty.