



Full wwPDB X-ray Structure Validation Report ⓘ

Jun 16, 2024 – 11:25 AM EDT

PDB ID : 5DXJ
Title : Crystal structure of CARM1 and sinefungin
Authors : Boriack-Sjodin, P.A.
Deposited on : 2015-09-23
Resolution : 1.95 Å(reported)

This is a Full wwPDB X-ray Structure Validation Report for a publicly released PDB entry.

We welcome your comments at validation@mail.wwpdb.org

A user guide is available at

<https://www.wwpdb.org/validation/2017/XrayValidationReportHelp>

with specific help available everywhere you see the ⓘ symbol.

The types of validation reports are described at

<http://www.wwpdb.org/validation/2017/FAQs#types>.

The following versions of software and data (see [references ⓘ](#)) were used in the production of this report:

MolProbity : 4.02b-467
Mogul : 1.8.5 (274361), CSD as541be (2020)
Xtriage (Phenix) : 1.13
EDS : 2.37.1
buster-report : 1.1.7 (2018)
Percentile statistics : 20191225.v01 (using entries in the PDB archive December 25th 2019)
Refmac : 5.8.0158
CCP4 : 7.0.044 (Gargrove)
Ideal geometry (proteins) : Engh & Huber (2001)
Ideal geometry (DNA, RNA) : Parkinson et al. (1996)
Validation Pipeline (wwPDB-VP) : 2.37.1

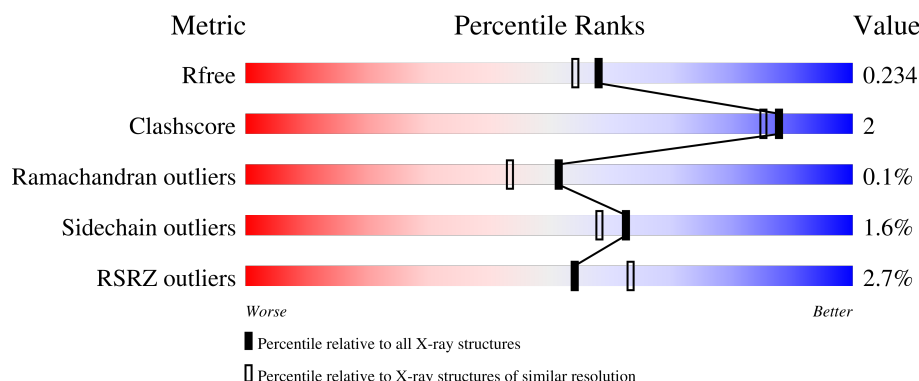
1 Overall quality at a glance

The following experimental techniques were used to determine the structure:

X-RAY DIFFRACTION

The reported resolution of this entry is 1.95 Å.

Percentile scores (ranging between 0-100) for global validation metrics of the entry are shown in the following graphic. The table shows the number of entries on which the scores are based.



Metric	Whole archive (#Entries)	Similar resolution (#Entries, resolution range(Å))
R_{free}	130704	2580 (1.96-1.96)
Clashscore	141614	2705 (1.96-1.96)
Ramachandran outliers	138981	2678 (1.96-1.96)
Sidechain outliers	138945	2678 (1.96-1.96)
RSRZ outliers	127900	2539 (1.96-1.96)

The table below summarises the geometric issues observed across the polymeric chains and their fit to the electron density. The red, orange, yellow and green segments of the lower bar indicate the fraction of residues that contain outliers for ≥ 3 , 2, 1 and 0 types of geometric quality criteria respectively. A grey segment represents the fraction of residues that are not modelled. The numeric value for each fraction is indicated below the corresponding segment, with a dot representing fractions $\leq 5\%$. The upper red bar (where present) indicates the fraction of residues that have poor fit to the electron density. The numeric value is given above the bar.

Mol	Chain	Length	Quality of chain
1	A	349	<div> <div>2%</div> <div> <div></div> <div>91%</div> <div>7%</div> </div> </div>
1	B	349	<div> <div>%</div> <div> <div></div> <div>92%</div> <div>6%</div> </div> </div>
1	C	349	<div> <div>4%</div> <div> <div></div> <div>94%</div> <div>•••</div> </div> </div>
1	D	349	<div> <div>4%</div> <div> <div></div> <div>93%</div> <div>5%</div> </div> </div>

2 Entry composition

There are 4 unique types of molecules in this entry. The entry contains 12312 atoms, of which 0 are hydrogens and 0 are deuteriums.

In the tables below, the ZeroOcc column contains the number of atoms modelled with zero occupancy, the AltConf column contains the number of residues with at least one atom in alternate conformation and the Trace column contains the number of residues modelled with at most 2 atoms.

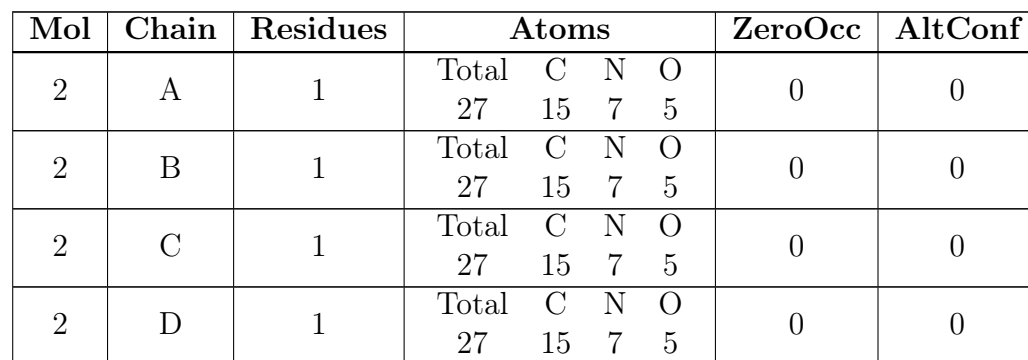
- Molecule 1 is a protein called Histone-arginine methyltransferase CARM1.

Mol	Chain	Residues	Atoms					ZeroOcc	AltConf	Trace
1	A	344	Total	C	N	O	S	0	14	0
			2869	1842	477	534	16			
1	B	344	Total	C	N	O	S	0	19	0
			2917	1880	481	539	17			
1	C	343	Total	C	N	O	S	0	7	0
			2814	1811	471	515	17			
1	D	344	Total	C	N	O	S	0	5	0
			2809	1813	464	517	15			

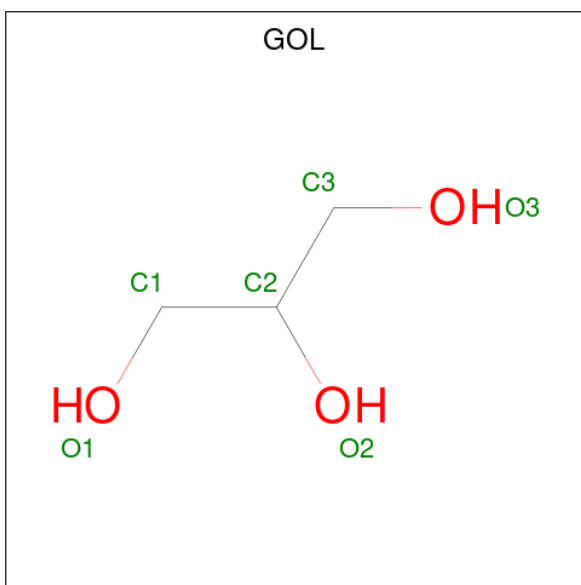
There are 12 discrepancies between the modelled and reference sequences:

Chain	Residue	Modelled	Actual	Comment	Reference
A	131	SER	-	expression tag	UNP Q86X55
A	132	ILE	-	expression tag	UNP Q86X55
A	133	ALA	-	expression tag	UNP Q86X55
B	131	SER	-	expression tag	UNP Q86X55
B	132	ILE	-	expression tag	UNP Q86X55
B	133	ALA	-	expression tag	UNP Q86X55
C	131	SER	-	expression tag	UNP Q86X55
C	132	ILE	-	expression tag	UNP Q86X55
C	133	ALA	-	expression tag	UNP Q86X55
D	131	SER	-	expression tag	UNP Q86X55
D	132	ILE	-	expression tag	UNP Q86X55
D	133	ALA	-	expression tag	UNP Q86X55

- Molecule 2 is SINEFUNGIN (three-letter code: SFG) (formula: C₁₅H₂₃N₇O₅).



- Molecule 3 is GLYCEROL (three-letter code: GOL) (formula: $C_3H_8O_3$).



Mol	Chain	Residues	Atoms			ZeroOcc	AltConf
3	A	1	Total	C	O	0	0
			6	3	3		
3	B	1	Total	C	O	0	0
			6	3	3		
3	B	1	Total	C	O	0	0
			6	3	3		
3	C	1	Total	C	O	0	0
			6	3	3		
3	D	1	Total	C	O	0	0
			6	3	3		

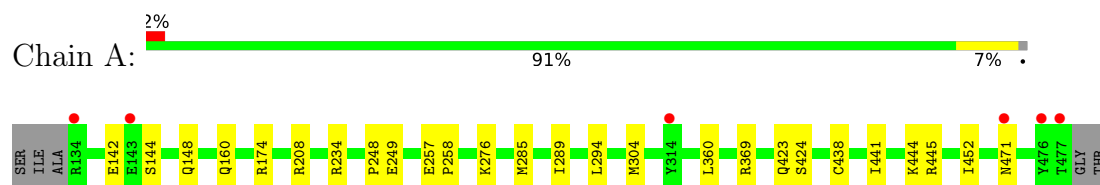
- Molecule 4 is water.

Mol	Chain	Residues	Atoms		ZeroOcc	AltConf
4	A	231	Total	O	0	0
			231	231		
4	B	239	Total	O	0	1
			240	240		
4	C	134	Total	O	0	0
			134	134		
4	D	160	Total	O	0	0
			160	160		

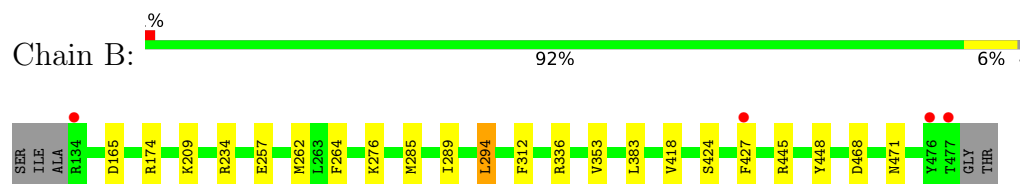
3 Residue-property plots

These plots are drawn for all protein, RNA, DNA and oligosaccharide chains in the entry. The first graphic for a chain summarises the proportions of the various outlier classes displayed in the second graphic. The second graphic shows the sequence view annotated by issues in geometry and electron density. Residues are color-coded according to the number of geometric quality criteria for which they contain at least one outlier: green = 0, yellow = 1, orange = 2 and red = 3 or more. A red dot above a residue indicates a poor fit to the electron density ($RSRZ > 2$). Stretches of 2 or more consecutive residues without any outlier are shown as a green connector. Residues present in the sample, but not in the model, are shown in grey.

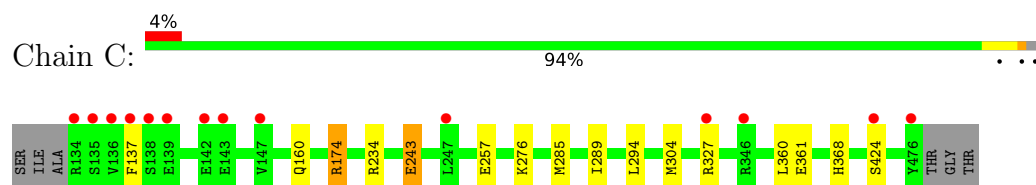
- Molecule 1: Histone-arginine methyltransferase CARM1



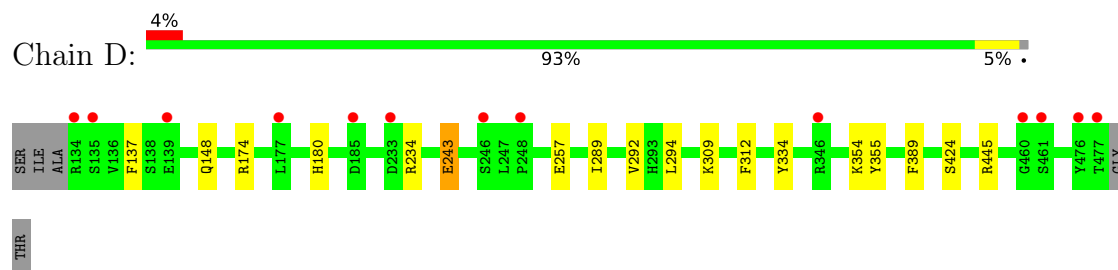
- Molecule 1: Histone-arginine methyltransferase CARM1



- Molecule 1: Histone-arginine methyltransferase CARM1



- Molecule 1: Histone-arginine methyltransferase CARM1



4 Data and refinement statistics

Property	Value	Source
Space group	P 2 ₁ 2 ₁ 2	Depositor
Cell constants a, b, c, α , β , γ	74.92Å 97.88Å 207.38Å 90.00° 90.00° 90.00°	Depositor
Resolution (Å)	50.00 – 1.95 38.11 – 1.95	Depositor EDS
% Data completeness (in resolution range)	98.8 (50.00-1.95) 98.9 (38.11-1.95)	Depositor EDS
R_{merge}	0.08	Depositor
R_{sym}	(Not available)	Depositor
$\langle I/\sigma(I) \rangle$ ¹	3.01 (at 1.95Å)	Xtriage
Refinement program	REFMAC 5.8.0107	Depositor
R, R_{free}	0.198 , 0.231 0.204 , 0.234	Depositor DCC
R_{free} test set	5555 reflections (5.02%)	wwPDB-VP
Wilson B-factor (Å ²)	27.3	Xtriage
Anisotropy	0.010	Xtriage
Bulk solvent k_{sol} (e/Å ³), B_{sol} (Å ²)	0.37 , 47.4	EDS
L-test for twinning ²	$\langle L \rangle = 0.48$, $\langle L^2 \rangle = 0.32$	Xtriage
Estimated twinning fraction	No twinning to report.	Xtriage
F_o, F_c correlation	0.95	EDS
Total number of atoms	12312	wwPDB-VP
Average B, all atoms (Å ²)	33.0	wwPDB-VP

Xtriage's analysis on translational NCS is as follows: *The analyses of the Patterson function reveals a significant off-origin peak that is 31.75 % of the origin peak, indicating pseudo-translational symmetry. The chance of finding a peak of this or larger height randomly in a structure without pseudo-translational symmetry is equal to 1.0509e-03. The detected translational NCS is most likely also responsible for the elevated intensity ratio.*

¹Intensities estimated from amplitudes.

²Theoretical values of $\langle |L| \rangle$, $\langle L^2 \rangle$ for acentric reflections are 0.5, 0.333 respectively for untwinned datasets, and 0.375, 0.2 for perfectly twinned datasets.

5 Model quality

5.1 Standard geometry

Bond lengths and bond angles in the following residue types are not validated in this section: SFG, GOL

The Z score for a bond length (or angle) is the number of standard deviations the observed value is removed from the expected value. A bond length (or angle) with $|Z| > 5$ is considered an outlier worth inspection. RMSZ is the root-mean-square of all Z scores of the bond lengths (or angles).

Mol	Chain	Bond lengths		Bond angles	
		RMSZ	$\# Z > 5$	RMSZ	$\# Z > 5$
1	A	0.57	0/2940	0.91	6/3982 (0.2%)
1	B	0.56	0/2997	0.80	7/4061 (0.2%)
1	C	0.51	0/2885	0.77	5/3906 (0.1%)
1	D	0.52	0/2881	0.78	5/3904 (0.1%)
All	All	0.54	0/11703	0.82	23/15853 (0.1%)

Chiral center outliers are detected by calculating the chiral volume of a chiral center and verifying if the center is modelled as a planar moiety or with the opposite hand. A planarity outlier is detected by checking planarity of atoms in a peptide group, atoms in a mainchain group or atoms of a sidechain that are expected to be planar.

Mol	Chain	#Chirality outliers	#Planarity outliers
1	A	0	1

There are no bond length outliers.

All (23) bond angle outliers are listed below:

Mol	Chain	Res	Type	Atoms	Z	Observed(°)	Ideal(°)
1	A	234	ARG	NE-CZ-NH2	21.46	131.03	120.30
1	A	234	ARG	NE-CZ-NH1	-19.48	110.56	120.30
1	B	294[A]	LEU	CA-CB-CG	8.83	135.61	115.30
1	B	294[B]	LEU	CA-CB-CG	8.83	135.61	115.30
1	C	174	ARG	NE-CZ-NH2	8.65	124.62	120.30
1	C	234	ARG	NE-CZ-NH2	-8.46	116.07	120.30
1	A	174	ARG	NE-CZ-NH1	-7.90	116.35	120.30
1	A	174	ARG	NE-CZ-NH2	7.84	124.22	120.30
1	C	174	ARG	NE-CZ-NH1	-7.47	116.56	120.30
1	B	234	ARG	NE-CZ-NH2	-7.39	116.60	120.30
1	D	234	ARG	NE-CZ-NH2	-7.21	116.70	120.30
1	C	234	ARG	NE-CZ-NH1	6.22	123.41	120.30

Continued on next page...

Continued from previous page...

Mol	Chain	Res	Type	Atoms	Z	Observed(°)	Ideal(°)
1	B	445	ARG	NE-CZ-NH1	6.16	123.38	120.30
1	B	234	ARG	NE-CZ-NH1	6.13	123.36	120.30
1	D	234	ARG	NE-CZ-NH1	6.00	123.30	120.30
1	D	174	ARG	NE-CZ-NH1	5.95	123.27	120.30
1	B	174	ARG	NE-CZ-NH1	5.70	123.15	120.30
1	B	165	ASP	CB-CG-OD1	5.51	123.26	118.30
1	C	327	ARG	CB-CG-CD	5.45	125.78	111.60
1	A	208	ARG	NE-CZ-NH2	5.42	123.01	120.30
1	D	174	ARG	NE-CZ-NH2	-5.27	117.66	120.30
1	D	445	ARG	NE-CZ-NH1	5.27	122.93	120.30
1	A	445	ARG	NE-CZ-NH1	5.18	122.89	120.30

There are no chirality outliers.

All (1) planarity outliers are listed below:

Mol	Chain	Res	Type	Group
1	A	248	PRO	Peptide

5.2 Too-close contacts

In the following table, the Non-H and H(model) columns list the number of non-hydrogen atoms and hydrogen atoms in the chain respectively. The H(added) column lists the number of hydrogen atoms added and optimized by MolProbity. The Clashes column lists the number of clashes within the asymmetric unit, whereas Symm-Clashes lists symmetry-related clashes.

Mol	Chain	Non-H	H(model)	H(added)	Clashes	Symm-Clashes
1	A	2869	0	2798	13	0
1	B	2917	0	2837	19	0
1	C	2814	0	2754	8	1
1	D	2809	0	2745	9	1
2	A	27	0	22	0	0
2	B	27	0	22	0	0
2	C	27	0	22	0	0
2	D	27	0	22	0	0
3	A	6	0	8	0	0
3	B	12	0	16	0	0
3	C	6	0	8	0	0
3	D	6	0	8	0	0
4	A	231	0	0	4	0
4	B	240	0	0	0	0
4	C	134	0	0	1	0

Continued on next page...

Continued from previous page...

Mol	Chain	Non-H	H(model)	H(added)	Clashes	Symm-Clashes
4	D	160	0	0	1	0
All	All	12312	0	11262	46	1

The all-atom clashscore is defined as the number of clashes found per 1000 atoms (including hydrogen atoms). The all-atom clashscore for this structure is 2.

All (46) close contacts within the same asymmetric unit are listed below, sorted by their clash magnitude.

Atom-1	Atom-2	Interatomic distance (Å)	Clash overlap (Å)
1:B:383[B]:LEU:HD11	1:B:427[B]:PHE:CE1	1.18	1.64
1:B:383[B]:LEU:CD1	1:B:427[B]:PHE:CE1	2.04	1.39
1:B:383[B]:LEU:CD1	1:B:427[B]:PHE:CD1	2.41	1.02
1:B:383[B]:LEU:HD11	1:B:427[B]:PHE:CD1	1.95	1.01
1:B:383[B]:LEU:CD1	1:B:427[B]:PHE:HE1	1.53	1.00
1:B:383[B]:LEU:HD12	1:B:427[B]:PHE:CD1	2.19	0.75
1:B:383[B]:LEU:CG	1:B:427[B]:PHE:CE1	2.70	0.74
1:D:137:PHE:HB2	1:D:243:GLU:CG	2.22	0.70
1:C:137:PHE:HB2	1:C:243:GLU:CG	2.21	0.69
1:A:471[B]:ASN:O	1:A:471[B]:ASN:CG	2.37	0.61
1:B:262[A]:MET:HE3	1:B:418:VAL:HG11	1.86	0.57
1:C:137:PHE:HB2	1:C:243:GLU:HG2	1.88	0.55
1:D:137:PHE:HB2	1:D:243:GLU:HG2	1.89	0.54
1:B:383[B]:LEU:HD12	1:B:427[B]:PHE:HD1	1.69	0.52
1:C:174:ARG:NH1	4:C:603:HOH:O	2.41	0.52
1:D:294:LEU:HG	1:D:389:PHE:CE2	2.46	0.50
1:A:249:GLU:HG3	4:A:617:HOH:O	2.11	0.50
1:C:276:LYS:HD3	1:C:285[B]:MET:SD	2.53	0.49
1:A:276:LYS:HD3	1:A:285[B]:MET:SD	2.52	0.49
1:B:262[A]:MET:CE	1:B:418:VAL:HG11	2.42	0.48
1:B:294[B]:LEU:HD22	1:B:353:VAL:O	2.13	0.48
1:A:423:GLN:HG3	4:A:615:HOH:O	2.13	0.48
1:B:336:ARG:NH2	1:B:468[B]:ASP:OD1	2.45	0.47
1:A:285[B]:MET:HG3	1:A:360:LEU:HD23	1.96	0.47
1:C:137:PHE:HB2	1:C:243:GLU:HG3	1.97	0.47
1:A:304:MET:HE1	1:C:304:MET:HE1	1.96	0.46
1:D:292:VAL:CG1	1:D:355:TYR:HB3	2.45	0.46
1:B:471[B]:ASN:O	1:B:471[B]:ASN:CG	2.52	0.46
1:A:438[B]:CYS:SG	1:A:452:ILE:HG12	2.56	0.44
1:D:180:HIS:HD2	4:D:742:HOH:O	2.00	0.44
1:A:369[B]:ARG:HG3	1:A:441:ILE:CD1	2.48	0.43
1:D:137:PHE:HB2	1:D:243:GLU:HG3	1.98	0.43

Continued on next page...

Continued from previous page...

Atom-1	Atom-2	Interatomic distance (Å)	Clash overlap (Å)
1:A:148:GLN:NE2	4:A:611:HOH:O	2.52	0.43
1:A:369[A]:ARG:HG3	1:A:441:ILE:CD1	2.49	0.43
1:D:309:LYS:HE3	1:D:334:TYR:CE1	2.54	0.43
1:C:285[B]:MET:HG3	1:C:360:LEU:HD23	2.00	0.42
1:B:276:LYS:HD3	1:B:285[B]:MET:SD	2.60	0.42
1:A:142[B]:GLU:HG2	1:A:444:LYS:HB3	2.00	0.42
1:A:369[B]:ARG:NH2	4:A:610:HOH:O	2.52	0.41
1:B:294[A]:LEU:HD12	1:B:353:VAL:HB	2.01	0.41
1:C:160:GLN:HG3	1:D:312:PHE:CD2	2.56	0.41
1:B:383[B]:LEU:HG	1:B:427[B]:PHE:CE1	2.52	0.41
1:A:160:GLN:HG3	1:B:312:PHE:CD2	2.55	0.41
1:B:336:ARG:NE	1:B:468[B]:ASP:OD2	2.54	0.40
1:D:292:VAL:HG13	1:D:355:TYR:HB3	2.02	0.40
1:B:264:PHE:HB3	1:B:448:TYR:CE1	2.56	0.40

All (1) symmetry-related close contacts are listed below. The label for Atom-2 includes the symmetry operator and encoded unit-cell translations to be applied.

Atom-1	Atom-2	Interatomic distance (Å)	Clash overlap (Å)
1:C:361:GLU:OE1	1:D:354:LYS:NZ[1_655]	2.15	0.05

5.3 Torsion angles ⓘ

5.3.1 Protein backbone ⓘ

In the following table, the Percentiles column shows the percent Ramachandran outliers of the chain as a percentile score with respect to all X-ray entries followed by that with respect to entries of similar resolution.

The Analysed column shows the number of residues for which the backbone conformation was analysed, and the total number of residues.

Mol	Chain	Analysed	Favoured	Allowed	Outliers	Percentiles	
1	A	356/349 (102%)	338 (95%)	15 (4%)	3 (1%)	19	9
1	B	361/349 (103%)	351 (97%)	10 (3%)	0	100	100
1	C	348/349 (100%)	338 (97%)	10 (3%)	0	100	100
1	D	347/349 (99%)	336 (97%)	11 (3%)	0	100	100
All	All	1412/1396 (101%)	1363 (96%)	46 (3%)	3 (0%)	51	38

All (3) Ramachandran outliers are listed below:

Mol	Chain	Res	Type
1	A	144[A]	SER
1	A	144[B]	SER
1	A	258	PRO

5.3.2 Protein sidechains ⓘ

In the following table, the Percentiles column shows the percent sidechain outliers of the chain as a percentile score with respect to all X-ray entries followed by that with respect to entries of similar resolution.

The Analysed column shows the number of residues for which the sidechain conformation was analysed, and the total number of residues.

Mol	Chain	Analysed	Rotameric	Outliers	Percentiles	
1	A	314/303 (104%)	310 (99%)	4 (1%)	69	65
1	B	319/303 (105%)	315 (99%)	4 (1%)	69	65
1	C	306/303 (101%)	300 (98%)	6 (2%)	55	48
1	D	305/303 (101%)	300 (98%)	5 (2%)	62	58
All	All	1244/1212 (103%)	1225 (98%)	19 (2%)	62	60

All (19) residues with a non-rotameric sidechain are listed below:

Mol	Chain	Res	Type
1	A	257	GLU
1	A	289	ILE
1	A	294	LEU
1	A	424	SER
1	B	209	LYS
1	B	257	GLU
1	B	289	ILE
1	B	424	SER
1	C	243	GLU
1	C	257	GLU
1	C	289	ILE
1	C	294	LEU
1	C	368	HIS
1	C	424	SER
1	D	148	GLN
1	D	243	GLU
1	D	257	GLU

Continued on next page...

Continued from previous page...

Mol	Chain	Res	Type
1	D	289	ILE
1	D	424	SER

Sometimes sidechains can be flipped to improve hydrogen bonding and reduce clashes. All (13) such sidechains are listed below:

Mol	Chain	Res	Type
1	A	148	GLN
1	A	160	GLN
1	A	164	GLN
1	B	148	GLN
1	B	178	GLN
1	B	265	ASN
1	C	158	GLN
1	C	160	GLN
1	C	178	GLN
1	C	265	ASN
1	D	148	GLN
1	D	178	GLN
1	D	265	ASN

5.3.3 RNA [i](#)

There are no RNA molecules in this entry.

5.4 Non-standard residues in protein, DNA, RNA chains [i](#)

There are no non-standard protein/DNA/RNA residues in this entry.

5.5 Carbohydrates [i](#)

There are no monosaccharides in this entry.

5.6 Ligand geometry [i](#)

9 ligands are modelled in this entry.

In the following table, the Counts columns list the number of bonds (or angles) for which Mogul statistics could be retrieved, the number of bonds (or angles) that are observed in the model and the number of bonds (or angles) that are defined in the Chemical Component Dictionary. The

Link column lists molecule types, if any, to which the group is linked. The Z score for a bond length (or angle) is the number of standard deviations the observed value is removed from the expected value. A bond length (or angle) with $|Z| > 2$ is considered an outlier worth inspection. RMSZ is the root-mean-square of all Z scores of the bond lengths (or angles).

Mol	Type	Chain	Res	Link	Bond lengths			Bond angles		
					Counts	RMSZ	# Z > 2	Counts	RMSZ	# Z > 2
2	SFG	A	501	-	25,29,29	0.97	0	23,42,42	1.54	5 (21%)
3	GOL	A	502	-	5,5,5	0.28	0	5,5,5	0.30	0
2	SFG	D	501	-	25,29,29	1.06	2 (8%)	23,42,42	1.55	3 (13%)
3	GOL	D	502	-	5,5,5	0.23	0	5,5,5	0.34	0
3	GOL	B	502	-	5,5,5	0.41	0	5,5,5	1.02	0
2	SFG	C	501	-	25,29,29	1.04	2 (8%)	23,42,42	1.46	3 (13%)
3	GOL	B	503	-	5,5,5	0.32	0	5,5,5	0.23	0
3	GOL	C	502	-	5,5,5	0.30	0	5,5,5	0.22	0
2	SFG	B	501	-	25,29,29	1.03	0	23,42,42	1.41	4 (17%)

In the following table, the Chirals column lists the number of chiral outliers, the number of chiral centers analysed, the number of these observed in the model and the number defined in the Chemical Component Dictionary. Similar counts are reported in the Torsion and Rings columns. '-' means no outliers of that kind were identified.

Mol	Type	Chain	Res	Link	Chirals	Torsions	Rings
2	SFG	A	501	-	-	2/13/33/33	0/3/3/3
3	GOL	A	502	-	-	4/4/4/4	-
2	SFG	D	501	-	-	2/13/33/33	0/3/3/3
3	GOL	D	502	-	-	0/4/4/4	-
3	GOL	B	502	-	-	0/4/4/4	-
2	SFG	C	501	-	-	2/13/33/33	0/3/3/3
3	GOL	B	503	-	-	2/4/4/4	-
3	GOL	C	502	-	-	2/4/4/4	-
2	SFG	B	501	-	-	2/13/33/33	0/3/3/3

All (4) bond length outliers are listed below:

Mol	Chain	Res	Type	Atoms	Z	Observed(Å)	Ideal(Å)
2	C	501	SFG	C2-N3	2.47	1.36	1.32
2	D	501	SFG	C5-C4	2.29	1.47	1.40
2	D	501	SFG	CD-NE	-2.10	1.39	1.46
2	C	501	SFG	C5-C4	2.09	1.46	1.40

All (15) bond angle outliers are listed below:

Mol	Chain	Res	Type	Atoms	Z	Observed(°)	Ideal(°)
2	A	501	SFG	N3-C2-N1	-4.18	122.15	128.68
2	D	501	SFG	N3-C2-N1	-4.16	122.18	128.68
2	C	501	SFG	N3-C2-N1	-3.96	122.49	128.68
2	B	501	SFG	N3-C2-N1	-3.62	123.01	128.68
2	C	501	SFG	N6-C6-N1	2.69	124.15	118.57
2	A	501	SFG	C2-N1-C6	2.49	123.02	118.75
2	B	501	SFG	C2-N1-C6	2.42	122.89	118.75
2	D	501	SFG	C2-N1-C6	2.39	122.85	118.75
2	C	501	SFG	C2-N1-C6	2.28	122.66	118.75
2	A	501	SFG	CG-CD-NE	-2.25	102.49	109.03
2	A	501	SFG	O4'-C1'-C2'	-2.18	103.73	106.93
2	B	501	SFG	N6-C6-N1	2.17	123.08	118.57
2	B	501	SFG	O4'-C1'-C2'	-2.11	103.85	106.93
2	D	501	SFG	C1'-N9-C4	-2.11	122.94	126.64
2	A	501	SFG	N6-C6-N1	2.08	122.89	118.57

There are no chirality outliers.

All (16) torsion outliers are listed below:

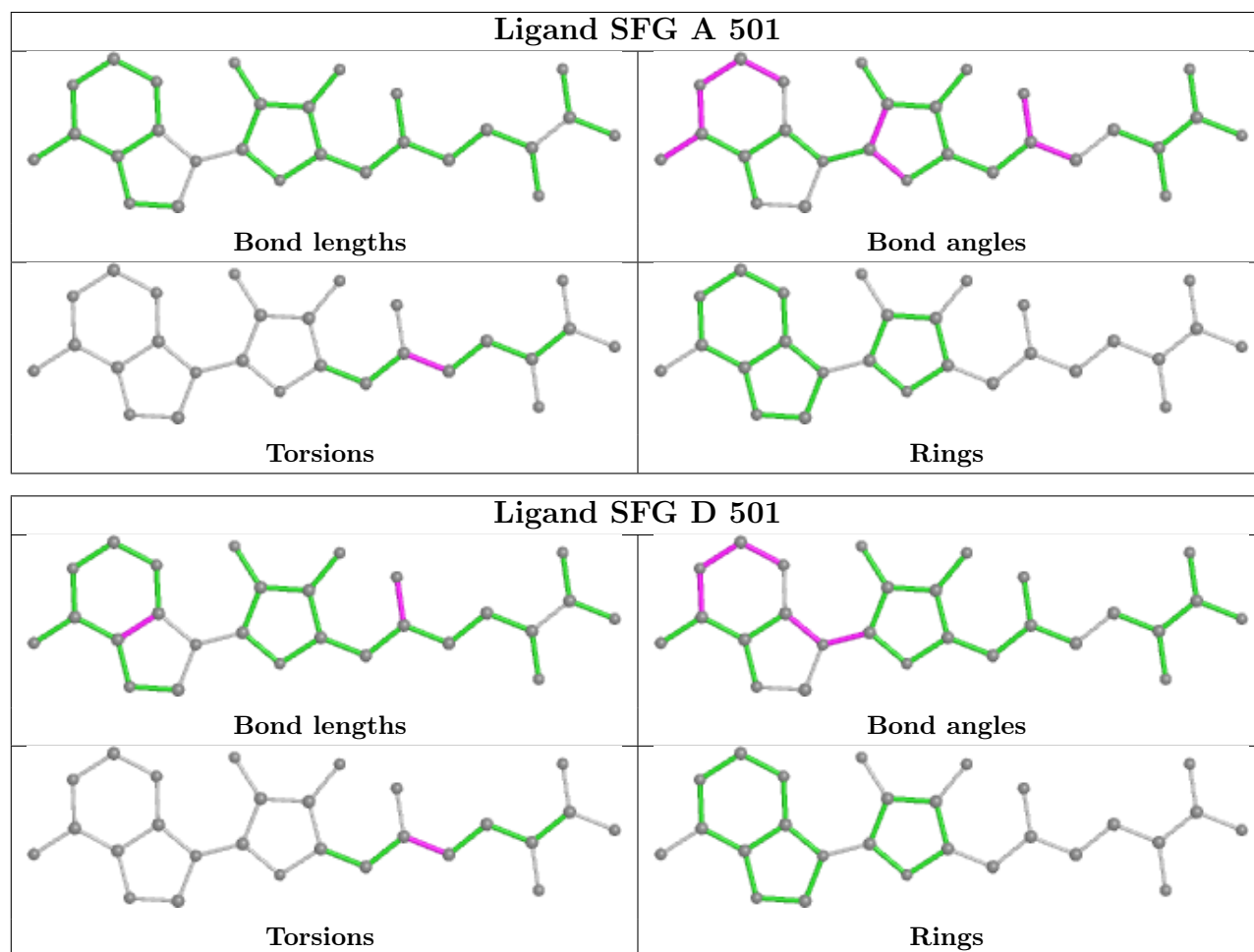
Mol	Chain	Res	Type	Atoms
2	A	501	SFG	C5'-CD-CG-CB
2	B	501	SFG	C5'-CD-CG-CB
2	C	501	SFG	NE-CD-CG-CB
2	C	501	SFG	C5'-CD-CG-CB
2	D	501	SFG	NE-CD-CG-CB
2	D	501	SFG	C5'-CD-CG-CB
3	A	502	GOL	O1-C1-C2-C3
3	B	503	GOL	C1-C2-C3-O3
3	A	502	GOL	C1-C2-C3-O3
3	A	502	GOL	O1-C1-C2-O2
3	B	503	GOL	O2-C2-C3-O3
3	C	502	GOL	O2-C2-C3-O3
2	A	501	SFG	NE-CD-CG-CB
2	B	501	SFG	NE-CD-CG-CB
3	A	502	GOL	O2-C2-C3-O3
3	C	502	GOL	C1-C2-C3-O3

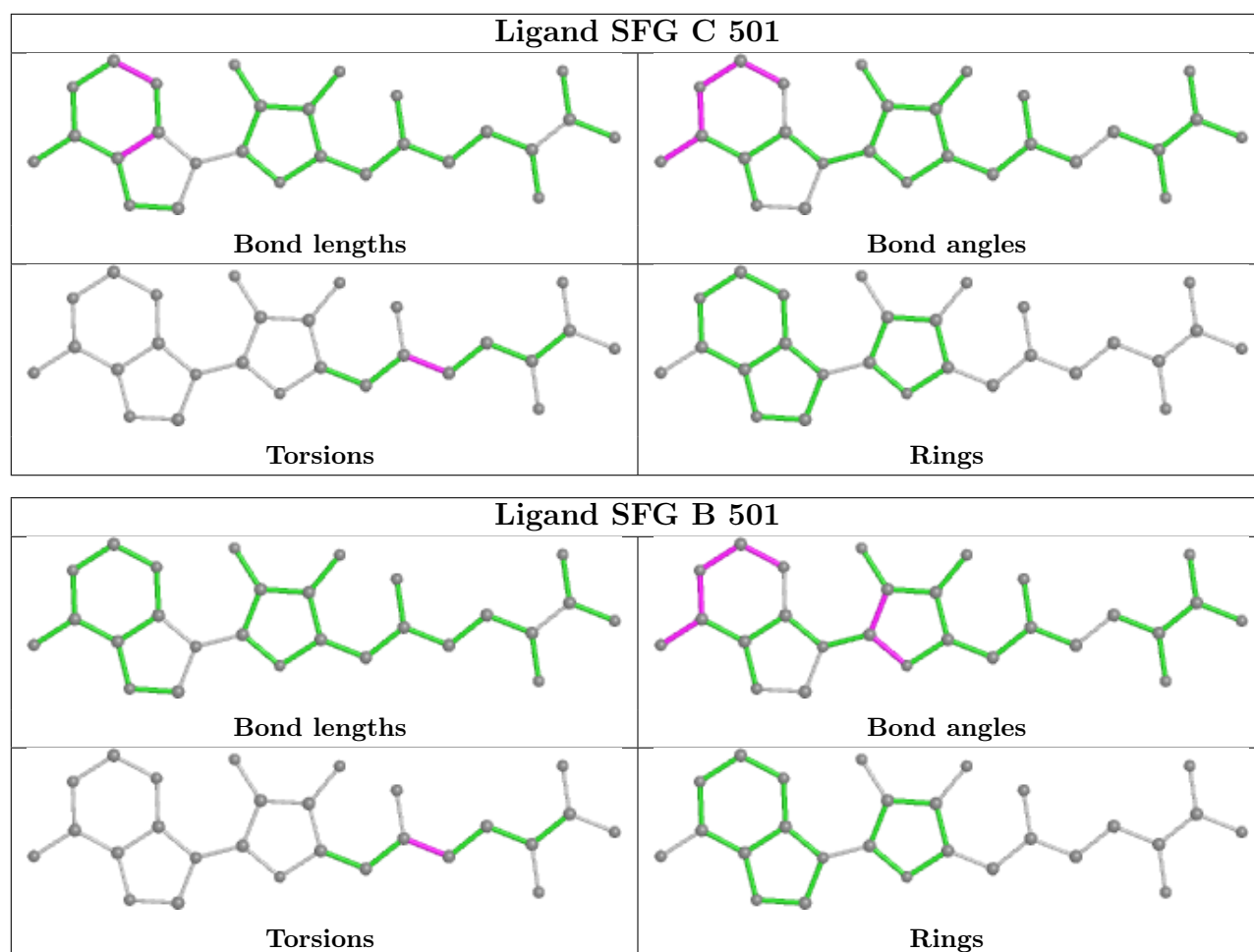
There are no ring outliers.

No monomer is involved in short contacts.

The following is a two-dimensional graphical depiction of Mogul quality analysis of bond lengths, bond angles, torsion angles, and ring geometry for all instances of the Ligand of Interest. In addition, ligands with molecular weight > 250 and outliers as shown on the validation Tables will

also be included. For torsion angles, if less than 5% of the Mogul distribution of torsion angles is within 10 degrees of the torsion angle in question, then that torsion angle is considered an outlier. Any bond that is central to one or more torsion angles identified as an outlier by Mogul will be highlighted in the graph. For rings, the root-mean-square deviation (RMSD) between the ring in question and similar rings identified by Mogul is calculated over all ring torsion angles. If the average RMSD is greater than 60 degrees and the minimal RMSD between the ring in question and any Mogul-identified rings is also greater than 60 degrees, then that ring is considered an outlier. The outliers are highlighted in purple. The color gray indicates Mogul did not find sufficient equivalents in the CSD to analyse the geometry.





5.7 Other polymers [i](#)

There are no such residues in this entry.

5.8 Polymer linkage issues [i](#)

There are no chain breaks in this entry.

6 Fit of model and data ⓘ

6.1 Protein, DNA and RNA chains ⓘ

In the following table, the column labelled ‘#RSRZ> 2’ contains the number (and percentage) of RSRZ outliers, followed by percent RSRZ outliers for the chain as percentile scores relative to all X-ray entries and entries of similar resolution. The OWAB column contains the minimum, median, 95th percentile and maximum values of the occupancy-weighted average B-factor per residue. The column labelled ‘Q< 0.9’ lists the number of (and percentage) of residues with an average occupancy less than 0.9.

Mol	Chain	Analysed	<RSRZ>	#RSRZ>2	OWAB(Å ²)	Q<0.9
1	A	344/349 (98%)	0.23	6 (1%) 70 77	18, 29, 44, 74	0
1	B	344/349 (98%)	0.02	4 (1%) 79 84	15, 25, 40, 74	0
1	C	343/349 (98%)	0.27	14 (4%) 37 46	26, 35, 52, 88	0
1	D	344/349 (98%)	0.31	13 (3%) 40 50	25, 36, 54, 90	0
All	All	1375/1396 (98%)	0.21	37 (2%) 54 63	15, 32, 49, 90	0

All (37) RSRZ outliers are listed below:

Mol	Chain	Res	Type	RSRZ
1	C	134	ARG	6.7
1	A	477	THR	6.6
1	D	134	ARG	6.5
1	D	476[A]	TYR	5.7
1	D	477	THR	4.8
1	A	134	ARG	4.0
1	C	136	VAL	4.0
1	B	477	THR	3.7
1	A	476	TYR	3.6
1	C	137	PHE	3.5
1	C	139	GLU	3.4
1	C	476	TYR	3.4
1	B	476[A]	TYR	3.3
1	C	147	VAL	3.3
1	B	134	ARG	3.2
1	C	135	SER	3.1
1	D	248	PRO	2.9
1	C	247	LEU	2.9
1	D	346	ARG	2.9
1	D	139	GLU	2.7
1	C	138	SER	2.7

Continued on next page...

Continued from previous page...

Mol	Chain	Res	Type	RSRZ
1	C	346	ARG	2.7
1	D	233	ASP	2.6
1	B	427[A]	PHE	2.5
1	A	143[A]	GLU	2.5
1	A	314	TYR	2.4
1	D	135	SER	2.4
1	D	461	SER	2.4
1	C	424	SER	2.3
1	A	471[A]	ASN	2.3
1	C	327	ARG	2.3
1	D	246	SER	2.3
1	C	143	GLU	2.3
1	D	185	ASP	2.2
1	D	177	LEU	2.2
1	D	460	GLY	2.2
1	C	142	GLU	2.0

6.2 Non-standard residues in protein, DNA, RNA chains [i](#)

There are no non-standard protein/DNA/RNA residues in this entry.

6.3 Carbohydrates [i](#)

There are no monosaccharides in this entry.

6.4 Ligands [i](#)

In the following table, the Atoms column lists the number of modelled atoms in the group and the number defined in the chemical component dictionary. The B-factors column lists the minimum, median, 95th percentile and maximum values of B factors of atoms in the group. The column labelled 'Q< 0.9' lists the number of atoms with occupancy less than 0.9.

Mol	Type	Chain	Res	Atoms	RSCC	RSR	B-factors(Å ²)	Q<0.9
3	GOL	D	502	6/6	0.83	0.31	59,62,65,66	0
3	GOL	C	502	6/6	0.88	0.12	47,54,56,58	0
3	GOL	B	502	6/6	0.89	0.27	48,48,53,62	0
3	GOL	B	503	6/6	0.89	0.11	47,49,51,52	0
3	GOL	A	502	6/6	0.90	0.11	47,48,49,49	0
2	SFG	D	501	27/27	0.93	0.12	26,30,33,34	0
2	SFG	C	501	27/27	0.93	0.10	29,31,32,33	0

Continued on next page...

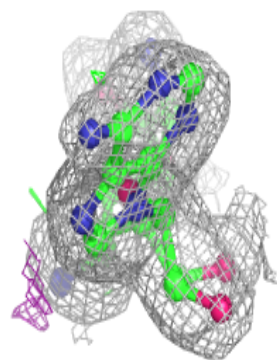
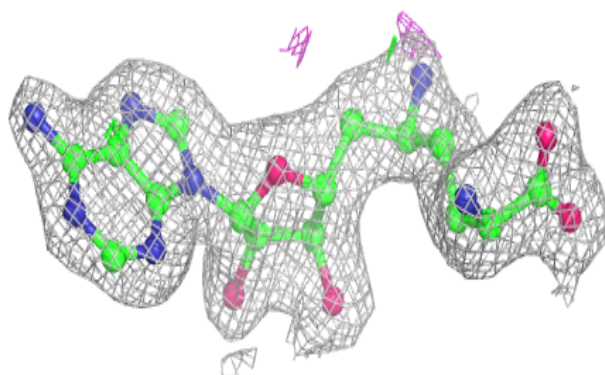
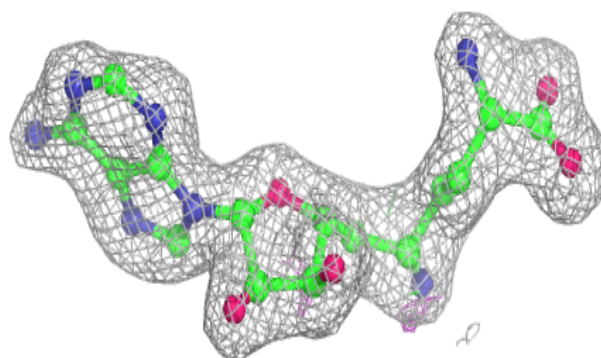
Continued from previous page...

Mol	Type	Chain	Res	Atoms	RSCC	RSR	B-factors(\AA^2)	Q<0.9
2	SFG	A	501	27/27	0.94	0.10	18,20,25,28	0
2	SFG	B	501	27/27	0.97	0.11	15,19,23,27	0

The following is a graphical depiction of the model fit to experimental electron density of all instances of the Ligand of Interest. In addition, ligands with molecular weight > 250 and outliers as shown on the geometry validation Tables will also be included. Each fit is shown from different orientation to approximate a three-dimensional view.

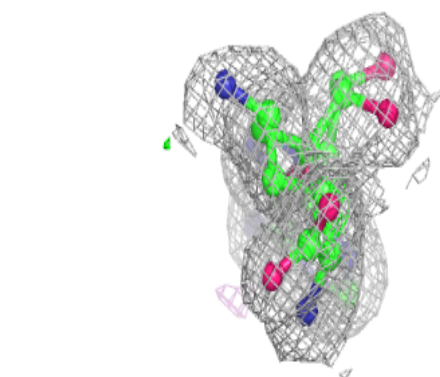
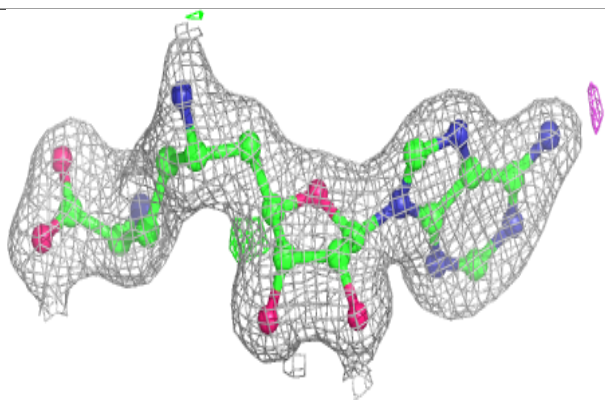
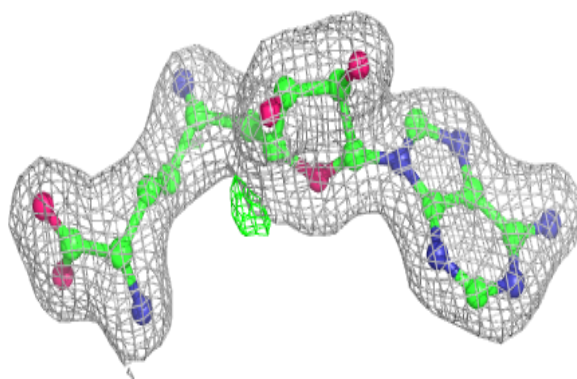
Electron density around SFG D 501:

2mF_o-DF_c (at 0.7 rmsd) in gray
mF_o-DF_c (at 3 rmsd) in purple (negative)
and green (positive)

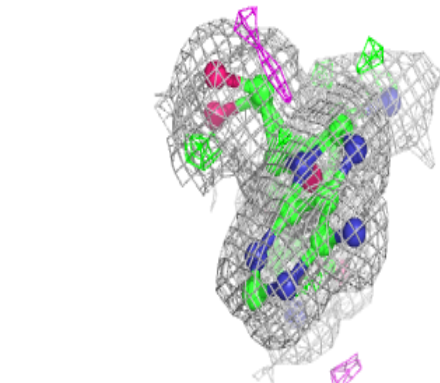
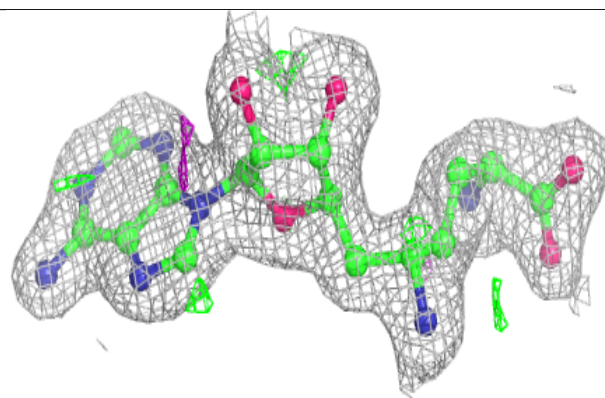
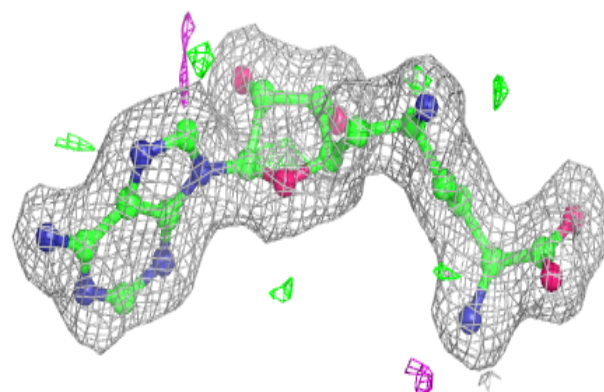


Electron density around SFG C 501:

$2mF_o-DF_c$ (at 0.7 rmsd) in gray
 mF_o-DF_c (at 3 rmsd) in purple (negative)
and green (positive)

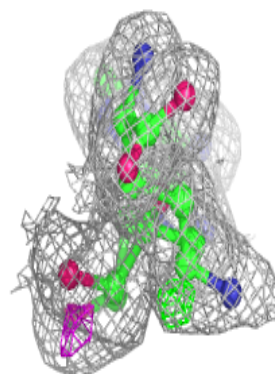
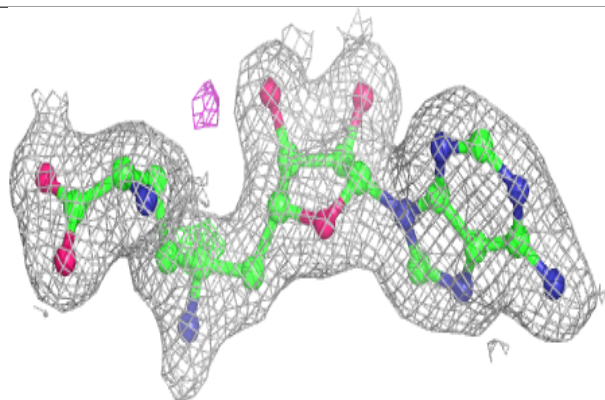
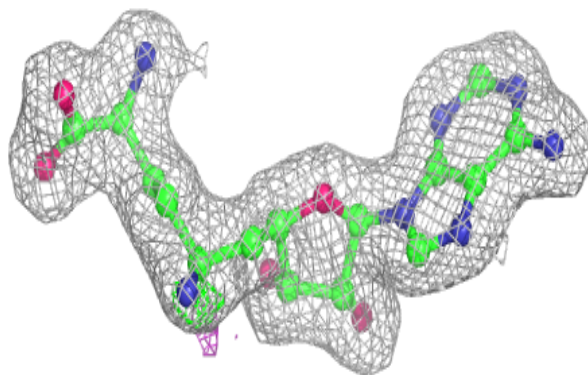
**Electron density around SFG A 501:**

$2mF_o-DF_c$ (at 0.7 rmsd) in gray
 mF_o-DF_c (at 3 rmsd) in purple (negative)
and green (positive)



Electron density around SFG B 501:

$2mF_o-DF_c$ (at 0.7 rmsd) in gray
 mF_o-DF_c (at 3 rmsd) in purple (negative)
and green (positive)



6.5 Other polymers [i](#)

There are no such residues in this entry.