



Full wwPDB X-ray Structure Validation Report ⓘ

Oct 13, 2024 – 06:52 pm BST

PDB ID : 5DIY
Title : Thermobaculum terrenum O-GlcNAc hydrolase mutant - D120N
Authors : Ostrowski, A.; Gundogdu, M.; Ferenbach, A.T.; Lebedev, A.; van Aalten, D.M.F.
Deposited on : 2015-09-01
Resolution : 2.06 Å(reported)

This is a Full wwPDB X-ray Structure Validation Report for a publicly released PDB entry.

We welcome your comments at validation@mail.wwpdb.org

A user guide is available at

<https://www.wwpdb.org/validation/2017/XrayValidationReportHelp>

with specific help available everywhere you see the ⓘ symbol.

The types of validation reports are described at

<http://www.wwpdb.org/validation/2017/FAQs#types>.

The following versions of software and data (see [references ⓘ](#)) were used in the production of this report:

MolProbity	:	4.02b-467
Mogul	:	1.8.4, CSD as541be (2020)
Xtriage (Phenix)	:	1.13
EDS	:	3.0
Percentile statistics	:	20231227.v01 (using entries in the PDB archive December 27th 2023)
CCP4	:	9.0.003 (Gargrove)
Density-Fitness	:	1.0.11
Ideal geometry (proteins)	:	Engh & Huber (2001)
Ideal geometry (DNA, RNA)	:	Parkinson et al. (1996)
Validation Pipeline (wwPDB-VP)	:	2.39

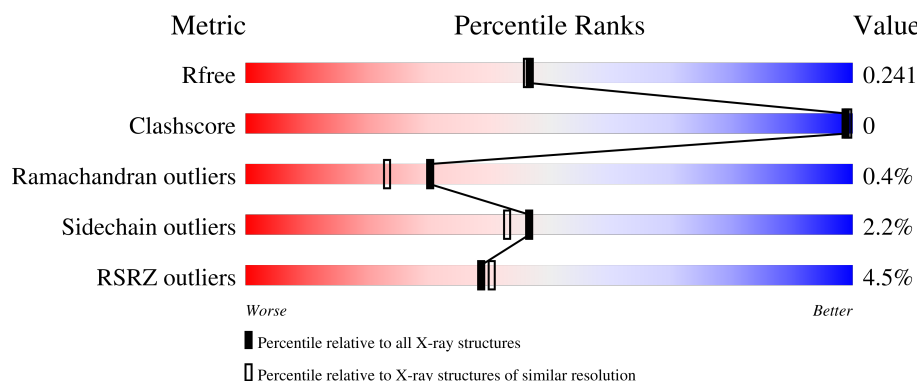
1 Overall quality at a glance

The following experimental techniques were used to determine the structure:

X-RAY DIFFRACTION

The reported resolution of this entry is 2.06 Å.

Percentile scores (ranging between 0-100) for global validation metrics of the entry are shown in the following graphic. The table shows the number of entries on which the scores are based.



Metric	Whole archive (#Entries)	Similar resolution (#Entries, resolution range(Å))
R_{free}	164625	3436 (2.08-2.04)
Clashscore	180529	3661 (2.08-2.04)
Ramachandran outliers	177936	3649 (2.08-2.04)
Sidechain outliers	177891	3649 (2.08-2.04)
RSRZ outliers	164620	3436 (2.08-2.04)

The table below summarises the geometric issues observed across the polymeric chains and their fit to the electron density. The red, orange, yellow and green segments of the lower bar indicate the fraction of residues that contain outliers for ≥ 3 , 2, 1 and 0 types of geometric quality criteria respectively. A grey segment represents the fraction of residues that are not modelled. The numeric value for each fraction is indicated below the corresponding segment, with a dot representing fractions $\leq 5\%$. The upper red bar (where present) indicates the fraction of residues that have poor fit to the electron density. The numeric value is given above the bar.

Mol	Chain	Length	Quality of chain
1	P	7	<div> <div>29%</div> <div>71%</div> <div>29%</div> </div>
1	Q	7	<div> <div>29%</div> <div>71%</div> <div>29%</div> </div>
2	A	474	<div> <div>2%</div> <div>94%</div> <div>2%</div> </div>
2	B	474	<div> <div>6%</div> <div>93%</div> <div>1%</div> </div>

2 Entry composition

There are 4 unique types of molecules in this entry. The entry contains 8034 atoms, of which 0 are hydrogens and 0 are deuteriums.

In the tables below, the ZeroOcc column contains the number of atoms modelled with zero occupancy, the AltConf column contains the number of residues with at least one atom in alternate conformation and the Trace column contains the number of residues modelled with at most 2 atoms.

- Molecule 1 is a protein called TGF-beta-activated kinase 1 and MAP3K7-binding protein 1.

Mol	Chain	Residues	Atoms				ZeroOcc	AltConf	Trace
1	P	5	Total	C	N	O	0	0	0
			38	25	5	8			
1	Q	5	Total	C	N	O	0	0	0
			38	25	5	8			

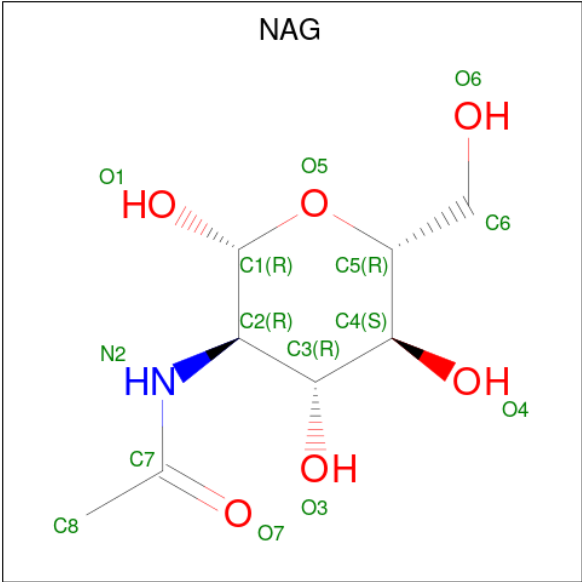
- Molecule 2 is a protein called Hyaluronidase.

Mol	Chain	Residues	Atoms					ZeroOcc	AltConf	Trace
2	A	463	Total	C	N	O	S	25	0	0
			3818	2445	635	721	17			
2	B	462	Total	C	N	O	S	54	0	0
			3815	2444	637	717	17			

There are 2 discrepancies between the modelled and reference sequences:

Chain	Residue	Modelled	Actual	Comment	Reference
A	120	ASN	ASP	conflict	UNP D1CDN2
B	120	ASN	ASP	conflict	UNP D1CDN2

- Molecule 3 is 2-acetamido-2-deoxy-beta-D-glucopyranose (three-letter code: NAG) (formula: C₈H₁₅NO₆).



Mol	Chain	Residues	Atoms				ZeroOcc	AltConf
3	P	1	Total	C	N	O	0	0
			14	8	1	5		
3	Q	1	Total	C	N	O	0	0
			14	8	1	5		

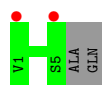
- Molecule 4 is water.

Mol	Chain	Residues	Atoms		ZeroOcc	AltConf
4	A	147	Total	O	0	0
			147	147		
4	B	150	Total	O	0	0
			150	150		

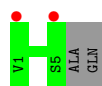
3 Residue-property plots [i](#)

These plots are drawn for all protein, RNA, DNA and oligosaccharide chains in the entry. The first graphic for a chain summarises the proportions of the various outlier classes displayed in the second graphic. The second graphic shows the sequence view annotated by issues in geometry and electron density. Residues are color-coded according to the number of geometric quality criteria for which they contain at least one outlier: green = 0, yellow = 1, orange = 2 and red = 3 or more. A red dot above a residue indicates a poor fit to the electron density ($RSRZ > 2$). Stretches of 2 or more consecutive residues without any outlier are shown as a green connector. Residues present in the sample, but not in the model, are shown in grey.

- Molecule 1: TGF-beta-activated kinase 1 and MAP3K7-binding protein 1



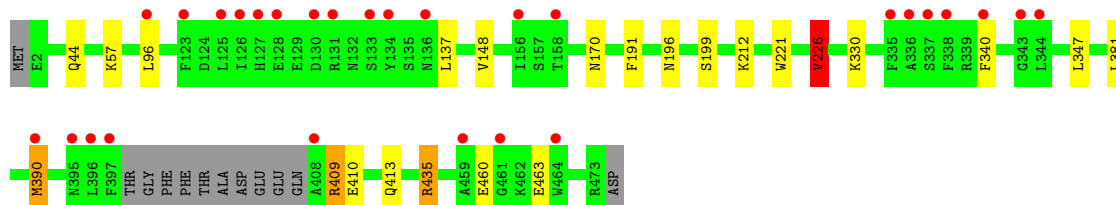
- Molecule 1: TGF-beta-activated kinase 1 and MAP3K7-binding protein 1



- Molecule 2: Hyaluronidase



- Molecule 2: Hyaluronidase



4 Data and refinement statistics

Property	Value	Source
Space group	C 1 2 1	Depositor
Cell constants a, b, c, α , β , γ	161.18Å 52.55Å 131.51Å 90.00° 122.35° 90.00°	Depositor
Resolution (Å)	49.03 – 2.06 49.03 – 2.06	Depositor EDS
% Data completeness (in resolution range)	99.5 (49.03-2.06) 99.5 (49.03-2.06)	Depositor EDS
R_{merge}	0.07	Depositor
R_{sym}	(Not available)	Depositor
$\langle I/\sigma(I) \rangle$ ¹	1.78 (at 2.07Å)	Xtriage
Refinement program	REFMAC 5.8.0103	Depositor
R, R_{free}	0.201 , 0.236 0.208 , 0.241	Depositor DCC
R_{free} test set	2923 reflections (5.06%)	wwPDB-VP
Wilson B-factor (Å ²)	29.6	Xtriage
Anisotropy	0.060	Xtriage
Bulk solvent k_{sol} (e/Å ³), B_{sol} (Å ²)	0.34 , 27.0	EDS
L-test for twinning ²	$\langle L \rangle = 0.49$, $\langle L^2 \rangle = 0.32$	Xtriage
Estimated twinning fraction	No twinning to report.	Xtriage
F_o, F_c correlation	0.95	EDS
Total number of atoms	8034	wwPDB-VP
Average B, all atoms (Å ²)	33.0	wwPDB-VP

Xtriage's analysis on translational NCS is as follows: *The largest off-origin peak in the Patterson function is 5.06% of the height of the origin peak. No significant pseudotranslation is detected.*

¹Intensities estimated from amplitudes.

²Theoretical values of $\langle |L| \rangle$, $\langle L^2 \rangle$ for acentric reflections are 0.5, 0.333 respectively for untwinned datasets, and 0.375, 0.2 for perfectly twinned datasets.

5 Model quality [i](#)

5.1 Standard geometry [i](#)

Bond lengths and bond angles in the following residue types are not validated in this section: NAG

The Z score for a bond length (or angle) is the number of standard deviations the observed value is removed from the expected value. A bond length (or angle) with $|Z| > 5$ is considered an outlier worth inspection. RMSZ is the root-mean-square of all Z scores of the bond lengths (or angles).

Mol	Chain	Bond lengths		Bond angles	
		RMSZ	$\# Z > 5$	RMSZ	$\# Z > 5$
1	P	0.56	0/39	0.49	0/53
1	Q	0.53	0/39	0.70	0/53
2	A	0.51	5/3919 (0.1%)	0.65	7/5320 (0.1%)
2	B	0.44	3/3916 (0.1%)	0.66	6/5315 (0.1%)
All	All	0.48	8/7913 (0.1%)	0.66	13/10741 (0.1%)

All (8) bond length outliers are listed below:

Mol	Chain	Res	Type	Atoms	Z	Observed(Å)	Ideal(Å)
2	A	58	GLU	CD-OE1	-10.74	1.13	1.25
2	A	65	LYS	CE-NZ	-9.95	1.24	1.49
2	A	66	GLU	CB-CG	-9.15	1.34	1.52
2	A	57	LYS	CD-CE	-7.25	1.33	1.51
2	B	410	GLU	CG-CD	-7.22	1.41	1.51
2	B	413	GLN	CB-CG	-6.31	1.35	1.52
2	B	409	ARG	CA-CB	-5.22	1.42	1.53
2	A	212	LYS	CG-CD	5.05	1.69	1.52

All (13) bond angle outliers are listed below:

Mol	Chain	Res	Type	Atoms	Z	Observed(°)	Ideal(°)
2	A	58	GLU	OE1-CD-OE2	-7.21	114.65	123.30
2	A	449	LEU	CB-CG-CD2	7.12	123.11	111.00
2	B	226	VAL	CB-CA-C	-5.88	100.22	111.40
2	A	65	LYS	CD-CE-NZ	5.82	125.09	111.70
2	A	212	LYS	CB-CG-CD	-5.64	96.94	111.60
2	B	435	ARG	NE-CZ-NH1	5.62	123.11	120.30
2	B	410	GLU	CG-CD-OE2	5.62	129.53	118.30
2	A	435	ARG	NE-CZ-NH1	5.55	123.07	120.30
2	B	410	GLU	CG-CD-OE1	-5.48	107.34	118.30

Continued on next page...

Continued from previous page...

Mol	Chain	Res	Type	Atoms	Z	Observed(°)	Ideal(°)
2	B	340	PHE	CA-CB-CG	-5.13	101.58	113.90
2	B	57	LYS	CG-CD-CE	-5.12	96.55	111.90
2	A	226	VAL	CB-CA-C	-5.02	101.86	111.40
2	A	66	GLU	CA-CB-CG	5.01	124.43	113.40

There are no chirality outliers.

There are no planarity outliers.

5.2 Too-close contacts

In the following table, the Non-H and H(model) columns list the number of non-hydrogen atoms and hydrogen atoms in the chain respectively. The H(added) column lists the number of hydrogen atoms added and optimized by MolProbity. The Clashes column lists the number of clashes within the asymmetric unit, whereas Symm-Clashes lists symmetry-related clashes.

Mol	Chain	Non-H	H(model)	H(added)	Clashes	Symm-Clashes
1	P	38	0	36	0	0
1	Q	38	0	36	0	0
2	A	3818	0	3685	2	0
2	B	3815	0	3689	4	0
3	P	14	0	13	0	0
3	Q	14	0	13	0	0
4	A	147	0	0	0	0
4	B	150	0	0	0	0
All	All	8034	0	7472	6	0

The all-atom clashscore is defined as the number of clashes found per 1000 atoms (including hydrogen atoms). The all-atom clashscore for this structure is 0.

All (6) close contacts within the same asymmetric unit are listed below, sorted by their clash magnitude.

Atom-1	Atom-2	Interatomic distance (Å)	Clash overlap (Å)
2:B:347:LEU:HD23	2:B:390:MET:HB3	1.95	0.48
2:A:388:GLN:HG3	2:A:421:TYR:CE1	2.49	0.48
2:A:393:PHE:CE2	2:A:448:VAL:HG22	2.51	0.45
2:B:191:PHE:CD1	2:B:221:TRP:HB2	2.53	0.44
2:B:96:LEU:CD1	2:B:148:VAL:HG22	2.49	0.42
2:B:196:ASN:HD22	2:B:199:SER:HA	1.84	0.42

There are no symmetry-related clashes.

5.3 Torsion angles ⓘ

5.3.1 Protein backbone ⓘ

In the following table, the Percentiles column shows the percent Ramachandran outliers of the chain as a percentile score with respect to all X-ray entries followed by that with respect to entries of similar resolution.

The Analysed column shows the number of residues for which the backbone conformation was analysed, and the total number of residues.

Mol	Chain	Analysed	Favoured	Allowed	Outliers	Percentiles	
1	P	3/7 (43%)	3 (100%)	0	0	100	100
1	Q	3/7 (43%)	3 (100%)	0	0	100	100
2	A	459/474 (97%)	449 (98%)	8 (2%)	2 (0%)	30	23
2	B	458/474 (97%)	443 (97%)	13 (3%)	2 (0%)	30	23
All	All	923/962 (96%)	898 (97%)	21 (2%)	4 (0%)	30	23

All (4) Ramachandran outliers are listed below:

Mol	Chain	Res	Type
2	A	170	ASN
2	B	170	ASN
2	A	226	VAL
2	B	226	VAL

5.3.2 Protein sidechains ⓘ

In the following table, the Percentiles column shows the percent sidechain outliers of the chain as a percentile score with respect to all X-ray entries followed by that with respect to entries of similar resolution.

The Analysed column shows the number of residues for which the sidechain conformation was analysed, and the total number of residues.

Mol	Chain	Analysed	Rotameric	Outliers	Percentiles	
1	P	5/6 (83%)	5 (100%)	0	100	100
1	Q	5/6 (83%)	5 (100%)	0	100	100
2	A	420/429 (98%)	412 (98%)	8 (2%)	52	49
2	B	419/429 (98%)	408 (97%)	11 (3%)	41	37
All	All	849/870 (98%)	830 (98%)	19 (2%)	47	43

All (19) residues with a non-rotameric sidechain are listed below:

Mol	Chain	Res	Type
2	A	59	GLU
2	A	136	ASN
2	A	137	LEU
2	A	226	VAL
2	A	267	LEU
2	A	381	LEU
2	A	410	GLU
2	A	435	ARG
2	B	44	GLN
2	B	137	LEU
2	B	212	LYS
2	B	226	VAL
2	B	330	LYS
2	B	381	LEU
2	B	390	MET
2	B	409	ARG
2	B	435	ARG
2	B	460	GLU
2	B	463	GLU

Sometimes sidechains can be flipped to improve hydrogen bonding and reduce clashes. All (9) such sidechains are listed below:

Mol	Chain	Res	Type
2	A	223	ASN
2	A	242	HIS
2	A	274	GLN
2	A	290	GLN
2	B	132	ASN
2	B	196	ASN
2	B	257	ASN
2	B	300	ASN
2	B	447	GLN

5.3.3 RNA ⓘ

There are no RNA molecules in this entry.

5.4 Non-standard residues in protein, DNA, RNA chains ⓘ

There are no non-standard protein/DNA/RNA residues in this entry.

5.5 Carbohydrates [i](#)

There are no oligosaccharides in this entry.

5.6 Ligand geometry [i](#)

2 ligands are modelled in this entry.

In the following table, the Counts columns list the number of bonds (or angles) for which Mogul statistics could be retrieved, the number of bonds (or angles) that are observed in the model and the number of bonds (or angles) that are defined in the Chemical Component Dictionary. The Link column lists molecule types, if any, to which the group is linked. The Z score for a bond length (or angle) is the number of standard deviations the observed value is removed from the expected value. A bond length (or angle) with $|Z| > 2$ is considered an outlier worth inspection. RMSZ is the root-mean-square of all Z scores of the bond lengths (or angles).

Mol	Type	Chain	Res	Link	Bond lengths			Bond angles		
					Counts	RMSZ	$\# Z > 2$	Counts	RMSZ	$\# Z > 2$
3	NAG	P	101	1	14,14,15	0.49	0	17,19,21	1.84	3 (17%)
3	NAG	Q	101	1	14,14,15	0.59	0	17,19,21	1.63	2 (11%)

In the following table, the Chirals column lists the number of chiral outliers, the number of chiral centers analysed, the number of these observed in the model and the number defined in the Chemical Component Dictionary. Similar counts are reported in the Torsion and Rings columns. '-' means no outliers of that kind were identified.

Mol	Type	Chain	Res	Link	Chirals	Torsions	Rings
3	NAG	P	101	1	-	1/6/23/26	0/1/1/1
3	NAG	Q	101	1	-	1/6/23/26	0/1/1/1

There are no bond length outliers.

All (5) bond angle outliers are listed below:

Mol	Chain	Res	Type	Atoms	Z	Observed(°)	Ideal(°)
3	P	101	NAG	C1-O5-C5	6.30	120.72	112.19
3	Q	101	NAG	C1-O5-C5	5.49	119.63	112.19
3	Q	101	NAG	O5-C1-C2	2.99	116.01	111.29
3	P	101	NAG	O5-C1-C2	2.93	115.92	111.29
3	P	101	NAG	O5-C5-C6	2.06	110.44	107.20

There are no chirality outliers.

All (2) torsion outliers are listed below:

Mol	Chain	Res	Type	Atoms
3	Q	101	NAG	C3-C2-N2-C7
3	P	101	NAG	C3-C2-N2-C7

There are no ring outliers.

No monomer is involved in short contacts.

5.7 Other polymers [i](#)

There are no such residues in this entry.

5.8 Polymer linkage issues [i](#)

There are no chain breaks in this entry.

6 Fit of model and data

6.1 Protein, DNA and RNA chains

In the following table, the column labelled ‘#RSRZ> 2’ contains the number (and percentage) of RSRZ outliers, followed by percent RSRZ outliers for the chain as percentile scores relative to all X-ray entries and entries of similar resolution. The OWAB column contains the minimum, median, 95th percentile and maximum values of the occupancy-weighted average B-factor per residue. The column labelled ‘Q< 0.9’ lists the number of (and percentage) of residues with an average occupancy less than 0.9.

Mol	Chain	Analysed	<RSRZ>	#RSRZ>2	OWAB(Å ²)	Q<0.9
1	P	5/7 (71%)	2.23	2 (40%) 1 0	33, 35, 51, 52	2 (40%)
1	Q	5/7 (71%)	2.00	2 (40%) 1 0	26, 27, 39, 42	2 (40%)
2	A	463/474 (97%)	0.06	10 (2%) 62 63	18, 31, 48, 67	10 (2%)
2	B	462/474 (97%)	0.25	28 (6%) 28 29	16, 31, 55, 71	12 (2%)
All	All	935/962 (97%)	0.18	42 (4%) 39 40	16, 31, 52, 71	26 (2%)

All (42) RSRZ outliers are listed below:

Mol	Chain	Res	Type	RSRZ
2	B	396	LEU	4.1
1	P	1	VAL	3.7
1	Q	5	SER	3.7
2	B	408	ALA	3.4
2	A	464	TRP	3.4
2	B	130	ASP	3.4
2	B	128	GLU	3.3
2	B	123	PHE	3.3
1	Q	1	VAL	3.3
2	B	134	TYR	3.3
2	B	397	PHE	3.1
2	B	126	ILE	3.0
2	B	459	ALA	3.0
2	B	125	LEU	2.8
2	A	124	ASP	2.8
2	B	340	PHE	2.7
2	B	136	ASN	2.7
2	B	96	LEU	2.7
2	B	133	SER	2.7
1	P	5	SER	2.6
2	A	410	GLU	2.5

Continued on next page...

Continued from previous page...

Mol	Chain	Res	Type	RSRZ
2	B	464	TRP	2.5
2	A	399	GLY	2.5
2	A	365	ASP	2.5
2	B	158	THR	2.4
2	B	131	ARG	2.4
2	B	343	GLY	2.4
2	B	461	GLY	2.4
2	B	390	MET	2.3
2	A	411	SER	2.3
2	B	127	HIS	2.3
2	B	395	ASN	2.3
2	B	344	LEU	2.3
2	B	337	SER	2.3
2	A	412	LEU	2.2
2	B	338	PHE	2.2
2	A	473	ARG	2.2
2	A	123	PHE	2.1
2	B	336	ALA	2.1
2	B	335	PHE	2.1
2	A	455	ILE	2.1
2	B	156	ILE	2.0

6.2 Non-standard residues in protein, DNA, RNA chains [i](#)

There are no non-standard protein/DNA/RNA residues in this entry.

6.3 Carbohydrates [i](#)

There are no monosaccharides in this entry.

6.4 Ligands [i](#)

In the following table, the Atoms column lists the number of modelled atoms in the group and the number defined in the chemical component dictionary. The B-factors column lists the minimum, median, 95th percentile and maximum values of B factors of atoms in the group. The column labelled 'Q< 0.9' lists the number of atoms with occupancy less than 0.9.

Mol	Type	Chain	Res	Atoms	RSCC	RSR	B-factors(\AA^2)	Q<0.9
3	NAG	P	101	14/15	0.94	0.07	26,28,29,30	0
3	NAG	Q	101	14/15	0.96	0.06	22,23,25,26	0

6.5 Other polymers ⓘ

There are no such residues in this entry.