



# Full wwPDB X-ray Structure Validation Report ⓘ

Jun 16, 2024 – 12:02 AM EDT

PDB ID : 2D41  
Title : X-ray crystal structure of hepatitis C virus RNA-dependent RNA polymerase in complex with non-nucleoside inhibitor  
Authors : Biswal, B.K.; Wang, M.; Cherney, M.M.; Chan, L.; Yannopoulos, C.G.; Bilimoria, D.; Bedard, J.; James, M.N.G.  
Deposited on : 2005-10-05  
Resolution : 2.10 Å(reported)

This is a Full wwPDB X-ray Structure Validation Report for a publicly released PDB entry.

We welcome your comments at [validation@mail.wwpdb.org](mailto:validation@mail.wwpdb.org)

A user guide is available at

<https://www.wwpdb.org/validation/2017/XrayValidationReportHelp>

with specific help available everywhere you see the ⓘ symbol.

The types of validation reports are described at

<http://www.wwpdb.org/validation/2017/FAQs#types>.

---

The following versions of software and data (see [references ⓘ](#)) were used in the production of this report:

MolProbity	:	4.02b-467
Mogul	:	2022.3.0, CSD as543be (2022)
Xtriage (Phenix)	:	1.20.1
EDS	:	2.37.1
buster-report	:	1.1.7 (2018)
Percentile statistics	:	20191225.v01 (using entries in the PDB archive December 25th 2019)
Refmac	:	5.8.0158
CCP4	:	7.0.044 (Gargrove)
Ideal geometry (proteins)	:	Engh & Huber (2001)
Ideal geometry (DNA, RNA)	:	Parkinson et al. (1996)
Validation Pipeline (wwPDB-VP)	:	2.37.1

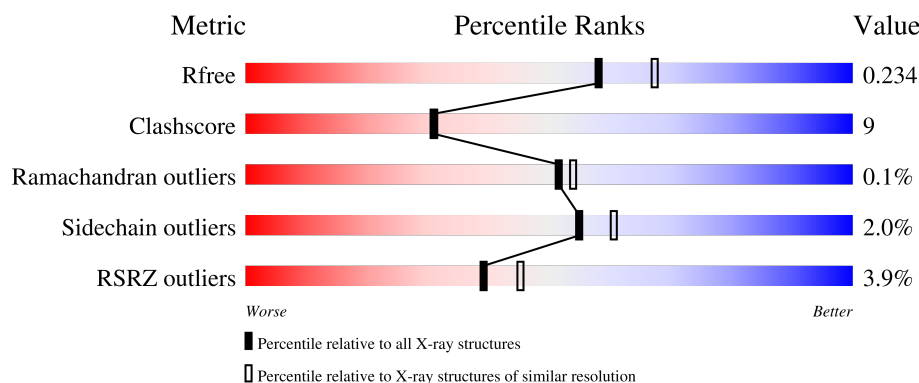
# 1 Overall quality at a glance

The following experimental techniques were used to determine the structure:

*X-RAY DIFFRACTION*

The reported resolution of this entry is 2.10 Å.

Percentile scores (ranging between 0-100) for global validation metrics of the entry are shown in the following graphic. The table shows the number of entries on which the scores are based.



Metric	Whole archive (#Entries)	Similar resolution (#Entries, resolution range(Å))
$R_{free}$	130704	5197 (2.10-2.10)
Clashscore	141614	5710 (2.10-2.10)
Ramachandran outliers	138981	5647 (2.10-2.10)
Sidechain outliers	138945	5648 (2.10-2.10)
RSRZ outliers	127900	5083 (2.10-2.10)

The table below summarises the geometric issues observed across the polymeric chains and their fit to the electron density. The red, orange, yellow and green segments of the lower bar indicate the fraction of residues that contain outliers for  $\geq 3$ , 2, 1 and 0 types of geometric quality criteria respectively. A grey segment represents the fraction of residues that are not modelled. The numeric value for each fraction is indicated below the corresponding segment, with a dot representing fractions  $\leq 5\%$ . The upper red bar (where present) indicates the fraction of residues that have poor fit to the electron density. The numeric value is given above the bar.

Mol	Chain	Length	Quality of chain
1	A	570	<div> <div>4%</div> <div>81%</div> <div>16%</div> <div>..</div> </div>
1	B	570	<div> <div>4%</div> <div>81%</div> <div>16%</div> <div>..</div> </div>

## 2 Entry composition [i](#)

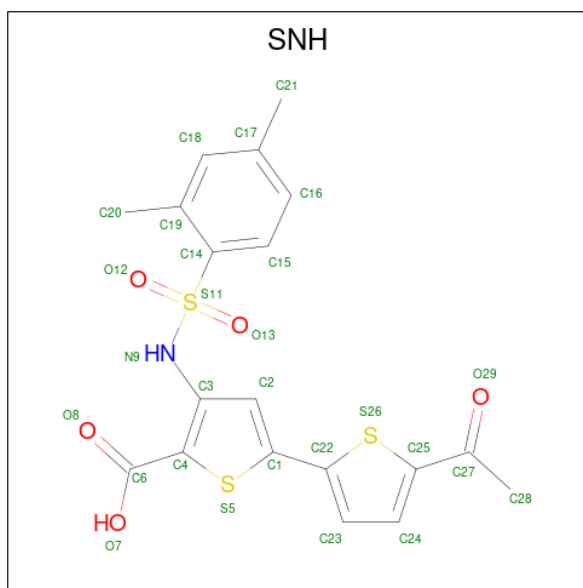
There are 3 unique types of molecules in this entry. The entry contains 9487 atoms, of which 0 are hydrogens and 0 are deuteriums.

In the tables below, the ZeroOcc column contains the number of atoms modelled with zero occupancy, the AltConf column contains the number of residues with at least one atom in alternate conformation and the Trace column contains the number of residues modelled with at most 2 atoms.

- Molecule 1 is a protein called polyprotein.

Mol	Chain	Residues	Atoms					ZeroOcc	AltConf	Trace
1	A	558	Total	C	N	O	S	0	0	0
			4340	2738	765	806	31			
1	B	558	Total	C	N	O	S	0	0	0
			4340	2738	765	806	31			

- Molecule 2 is 5'-ACETYL-4-[(2,4-DIMETHYLPHENYL)SULFONYL]AMINO}-2,2'-BITHIOPHENE-5-CARBOXYLIC ACID (three-letter code: SNH) (formula: C<sub>19</sub>H<sub>17</sub>NO<sub>5</sub>S<sub>3</sub>).



Mol	Chain	Residues	Atoms					ZeroOcc	AltConf
2	A	1	Total	C	N	O	S	0	0
			28	19	1	5	3		
2	A	1	Total	C	N	O	S	0	0
			28	19	1	5	3		
2	B	1	Total	C	N	O	S	0	0
			28	19	1	5	3		
2	B	1	Total	C	N	O	S	0	0
			28	19	1	5	3		

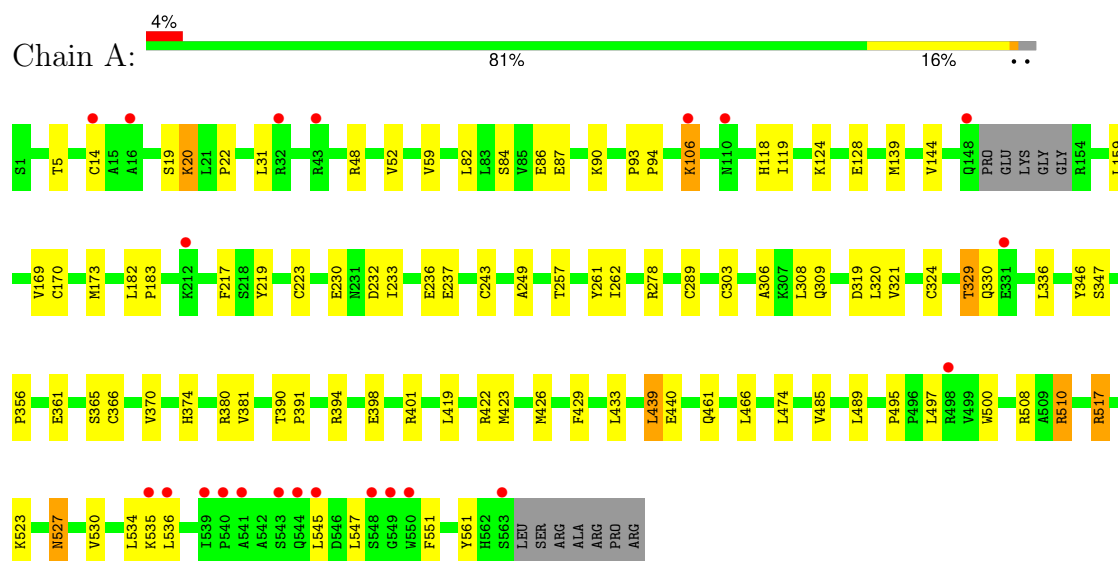
- Molecule 3 is water.

Mol	Chain	Residues	Atoms		ZeroOcc	AltConf
3	A	319	Total 319	O 319	0	0
3	B	376	Total 376	O 376	0	0

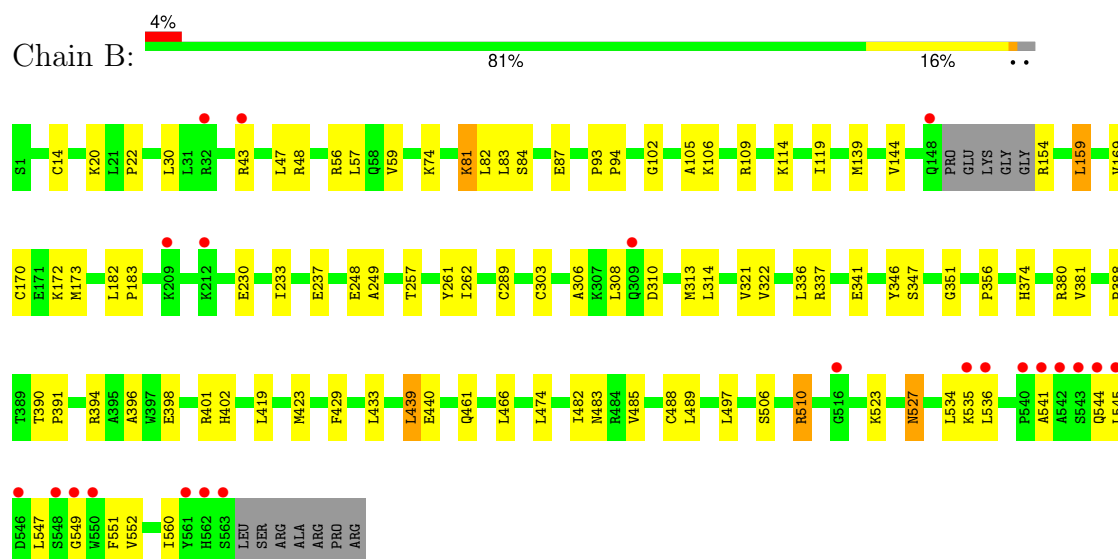
### 3 Residue-property plots [i](#)

These plots are drawn for all protein, RNA, DNA and oligosaccharide chains in the entry. The first graphic for a chain summarises the proportions of the various outlier classes displayed in the second graphic. The second graphic shows the sequence view annotated by issues in geometry and electron density. Residues are color-coded according to the number of geometric quality criteria for which they contain at least one outlier: green = 0, yellow = 1, orange = 2 and red = 3 or more. A red dot above a residue indicates a poor fit to the electron density ( $RSRZ > 2$ ). Stretches of 2 or more consecutive residues without any outlier are shown as a green connector. Residues present in the sample, but not in the model, are shown in grey.

#### • Molecule 1: polypeptide



#### • Molecule 1: polypeptide



## 4 Data and refinement statistics

Property	Value	Source
Space group	P 21 21 21	Depositor
Cell constants a, b, c, $\alpha$ , $\beta$ , $\gamma$	85.53Å 105.98Å 126.61Å 90.00° 90.00° 90.00°	Depositor
Resolution (Å)	39.66 – 2.10 39.66 – 2.10	Depositor EDS
% Data completeness (in resolution range)	(Not available) (39.66-2.10) 94.9 (39.66-2.10)	Depositor EDS
$R_{merge}$	(Not available)	Depositor
$R_{sym}$	0.07	Depositor
$\langle I/\sigma(I) \rangle$ <sup>1</sup>	3.43 (at 2.10Å)	Xtriage
Refinement program	CNS 1.1	Depositor
R, $R_{free}$	0.205 , 0.240 0.197 , 0.234	Depositor DCC
$R_{free}$ test set	3233 reflections (5.05%)	wwPDB-VP
Wilson B-factor (Å <sup>2</sup> )	24.7	Xtriage
Anisotropy	0.468	Xtriage
Bulk solvent $k_{sol}$ (e/Å <sup>3</sup> ), $B_{sol}$ (Å <sup>2</sup> )	0.37 , 56.5	EDS
L-test for twinning <sup>2</sup>	$\langle  L  \rangle = 0.49$ , $\langle L^2 \rangle = 0.32$	Xtriage
Estimated twinning fraction	No twinning to report.	Xtriage
$F_o, F_c$ correlation	0.95	EDS
Total number of atoms	9487	wwPDB-VP
Average B, all atoms (Å <sup>2</sup> )	28.0	wwPDB-VP

Xtriage's analysis on translational NCS is as follows: *The analyses of the Patterson function reveals a significant off-origin peak that is 51.79 % of the origin peak, indicating pseudo-translational symmetry. The chance of finding a peak of this or larger height randomly in a structure without pseudo-translational symmetry is equal to 5.3336e-05. The detected translational NCS is most likely also responsible for the elevated intensity ratio.*

<sup>1</sup>Intensities estimated from amplitudes.

<sup>2</sup>Theoretical values of  $\langle |L| \rangle$ ,  $\langle L^2 \rangle$  for acentric reflections are 0.5, 0.333 respectively for untwinned datasets, and 0.375, 0.2 for perfectly twinned datasets.

## 5 Model quality [i](#)

### 5.1 Standard geometry [i](#)

Bond lengths and bond angles in the following residue types are not validated in this section: SNH

The Z score for a bond length (or angle) is the number of standard deviations the observed value is removed from the expected value. A bond length (or angle) with  $|Z| > 5$  is considered an outlier worth inspection. RMSZ is the root-mean-square of all Z scores of the bond lengths (or angles).

Mol	Chain	Bond lengths		Bond angles	
		RMSZ	$\# Z  > 5$	RMSZ	$\# Z  > 5$
1	A	0.32	0/4434	0.58	0/6017
1	B	0.32	0/4434	0.58	1/6017 (0.0%)
All	All	0.32	0/8868	0.58	1/12034 (0.0%)

There are no bond length outliers.

All (1) bond angle outliers are listed below:

Mol	Chain	Res	Type	Atoms	Z	Observed(°)	Ideal(°)
1	B	351	GLY	N-CA-C	-5.39	99.63	113.10

There are no chirality outliers.

There are no planarity outliers.

### 5.2 Too-close contacts [i](#)

In the following table, the Non-H and H(model) columns list the number of non-hydrogen atoms and hydrogen atoms in the chain respectively. The H(added) column lists the number of hydrogen atoms added and optimized by MolProbity. The Clashes column lists the number of clashes within the asymmetric unit, whereas Symm-Clashes lists symmetry-related clashes.

Mol	Chain	Non-H	H(model)	H(added)	Clashes	Symm-Clashes
1	A	4340	0	4357	84	0
1	B	4340	0	4357	75	0
2	A	56	0	32	3	0
2	B	56	0	32	3	0
3	A	319	0	0	5	0
3	B	376	0	0	7	0
All	All	9487	0	8778	159	0

The all-atom clashscore is defined as the number of clashes found per 1000 atoms (including hydrogen atoms). The all-atom clashscore for this structure is 9.

All (159) close contacts within the same asymmetric unit are listed below, sorted by their clash magnitude.

Atom-1	Atom-2	Interatomic distance (Å)	Clash overlap (Å)
1:B:170:CYS:HA	1:B:173:MET:HE3	1.40	0.99
1:A:232:ASP:O	1:A:236:GLU:HG3	1.78	0.83
1:B:483:ASN:HB3	3:B:4303:HOH:O	1.80	0.81
1:A:422:ARG:HA	1:A:426:MET:HE2	1.65	0.77
1:B:94:PRO:HB3	1:B:106:LYS:NZ	2.01	0.76
1:B:314:LEU:HB3	1:B:321:VAL:CG1	2.17	0.75
1:A:423:MET:HE1	1:A:497:LEU:HD13	1.68	0.74
1:B:48:ARG:HG2	1:B:159:LEU:HD13	1.69	0.73
1:B:337:ARG:O	1:B:341:GLU:HG3	1.89	0.72
1:B:541:ALA:O	1:B:544:GLN:HG2	1.92	0.69
1:A:336:LEU:HD12	1:A:356:PRO:HD3	1.74	0.68
1:B:119:ILE:HD13	1:B:169:VAL:HG11	1.76	0.68
2:A:2001:SNH:H203	2:A:2001:SNH:H2	1.75	0.68
1:B:336:LEU:HD12	1:B:356:PRO:HD3	1.75	0.67
1:A:48:ARG:HG2	1:A:159:LEU:HD13	1.77	0.67
1:A:321:VAL:HG23	1:A:365:SER:HB3	1.75	0.67
1:B:523:LYS:HE2	1:B:534:LEU:HD23	1.78	0.66
1:A:508:ARG:NE	3:A:2107:HOH:O	2.29	0.65
1:B:423:MET:HE1	1:B:497:LEU:HD13	1.80	0.64
1:B:14:CYS:HB2	1:B:139:MET:HE3	1.78	0.64
1:A:5:THR:HG23	1:A:278:ARG:HH22	1.62	0.63
1:A:321:VAL:CG2	1:A:365:SER:HB3	2.27	0.63
1:B:14:CYS:HB2	1:B:139:MET:CE	2.30	0.62
1:B:94:PRO:HB3	1:B:106:LYS:HZ1	1.62	0.62
1:A:523:LYS:HE2	1:A:536:LEU:HD12	1.80	0.62
1:A:422:ARG:CA	1:A:426:MET:HE2	2.30	0.61
1:B:423:MET:CE	1:B:497:LEU:HD13	2.31	0.61
1:A:124:LYS:HE2	1:A:128:GLU:OE2	2.01	0.60
1:A:423:MET:CE	1:A:497:LEU:HD13	2.30	0.60
1:A:82:LEU:HD13	1:A:249:ALA:HB2	1.84	0.60
1:A:230:GLU:HG3	1:A:262:ILE:HG23	1.83	0.60
1:B:314:LEU:HB3	1:B:321:VAL:HG13	1.83	0.59
1:B:423:MET:HE1	2:B:3001:SNH:S26	2.44	0.58
1:A:508:ARG:HE	1:A:530:VAL:HG11	1.69	0.57
1:B:535:LYS:HG3	1:B:536:LEU:H	1.70	0.56
1:A:517:ARG:HG2	1:A:517:ARG:HH11	1.71	0.56
1:A:86:GLU:O	1:A:90:LYS:HG3	2.05	0.55

*Continued on next page...*



*Continued from previous page...*

Atom-1	Atom-2	Interatomic distance (Å)	Clash overlap (Å)
1:A:527:ASN:HD21	1:A:534:LEU:H	1.55	0.55
1:B:82:LEU:HD13	1:B:249:ALA:HB2	1.90	0.54
1:B:248:GLU:HB2	3:B:4355:HOH:O	2.08	0.54
1:A:22:PRO:HG2	1:A:401:ARG:HG3	1.90	0.54
1:A:466:LEU:HD22	1:A:551:PHE:HE2	1.72	0.54
1:B:94:PRO:HB3	1:B:106:LYS:HZ3	1.71	0.54
1:B:461:GLN:NE2	1:B:541:ALA:HB3	2.23	0.53
1:B:510:ARG:HG2	1:B:510:ARG:HH11	1.73	0.53
1:A:423:MET:HE2	2:A:1001:SNH:H16	1.89	0.53
1:B:381:VAL:HG11	1:B:474:LEU:CD2	2.39	0.53
1:A:19:SER:H	1:A:20:LYS:NZ	2.07	0.53
1:A:508:ARG:CZ	3:A:2107:HOH:O	2.56	0.53
1:A:510:ARG:HH11	1:A:510:ARG:HG2	1.73	0.53
1:A:422:ARG:HA	1:A:426:MET:CE	2.37	0.52
1:B:74:LYS:HE2	3:B:4108:HOH:O	2.08	0.52
1:B:172:LYS:HE3	1:B:560:ILE:HD13	1.91	0.52
1:B:390:THR:HB	1:B:391:PRO:HD3	1.92	0.52
1:A:119:ILE:HD13	1:A:169:VAL:HG11	1.91	0.52
1:A:182:LEU:HD23	1:A:182:LEU:C	2.29	0.52
1:A:461:GLN:HB2	1:A:545:LEU:HD11	1.90	0.52
1:B:84:SER:OG	1:B:87:GLU:HG3	2.10	0.52
1:B:506:SER:O	1:B:510:ARG:HD3	2.10	0.52
1:A:535:LYS:HG3	1:A:536:LEU:H	1.74	0.52
1:B:313:MET:HG2	1:B:322:VAL:HG22	1.92	0.52
1:A:230:GLU:HG3	1:A:262:ILE:CG2	2.40	0.52
1:B:182:LEU:C	1:B:182:LEU:HD23	2.30	0.51
1:A:20:LYS:HD2	1:A:20:LYS:H	1.75	0.51
1:B:81:LYS:HD2	3:B:4371:HOH:O	2.11	0.51
1:B:549:GLY:HA2	1:B:552:VAL:CG2	2.41	0.51
1:A:20:LYS:H	1:A:20:LYS:CD	2.23	0.51
1:A:535:LYS:CG	1:A:536:LEU:H	2.23	0.51
1:A:361:GLU:HG2	1:A:370:VAL:O	2.11	0.51
1:A:306:ALA:HB3	1:A:308:LEU:HD13	1.93	0.50
1:B:230:GLU:HG3	1:B:262:ILE:HG23	1.94	0.50
1:A:390:THR:HB	1:A:391:PRO:HD3	1.94	0.50
1:B:527:ASN:HD21	1:B:534:LEU:H	1.58	0.50
1:A:219:TYR:HB3	1:A:320:LEU:HD23	1.93	0.50
1:A:170:CYS:HA	1:A:173:MET:HE2	1.94	0.50
1:B:423:MET:HE2	2:B:3001:SNH:H16	1.93	0.50
1:A:84:SER:OG	1:A:87:GLU:HG3	2.12	0.49
1:A:508:ARG:NH1	1:A:523:LYS:HA	2.26	0.49

*Continued on next page...*

*Continued from previous page...*

Atom-1	Atom-2	Interatomic distance (Å)	Clash overlap (Å)
1:B:419:LEU:HD11	1:B:423:MET:HE3	1.94	0.49
1:A:237:GLU:HG3	1:A:257:THR:OG1	2.12	0.49
1:A:124:LYS:O	1:A:128:GLU:HG3	2.13	0.49
1:B:433:LEU:HB3	1:B:439:LEU:HD12	1.96	0.48
1:A:93:PRO:HG3	1:A:561:TYR:HB2	1.96	0.48
1:B:394:ARG:O	1:B:398:GLU:HG3	2.13	0.48
1:B:402:HIS:HE1	3:B:4199:HOH:O	1.97	0.48
1:B:102:GLY:O	1:B:114:LYS:HE3	2.14	0.47
1:B:466:LEU:HD22	1:B:551:PHE:HE2	1.79	0.47
1:A:182:LEU:HD12	1:A:243:CYS:SG	2.55	0.47
1:B:144:VAL:HB	1:B:394:ARG:HG2	1.94	0.47
1:A:485:VAL:O	1:A:489:LEU:HG	2.15	0.47
1:A:52:VAL:HG12	1:A:223:CYS:SG	2.55	0.47
1:B:374:HIS:HE1	1:B:380:ARG:HG3	1.80	0.47
1:B:510:ARG:HG2	1:B:510:ARG:NH1	2.31	0.46
1:B:535:LYS:HG3	1:B:536:LEU:N	2.30	0.46
1:B:22:PRO:HG2	1:B:401:ARG:HG3	1.98	0.46
1:A:433:LEU:HB3	1:A:439:LEU:HD12	1.98	0.46
1:A:510:ARG:HG2	1:A:510:ARG:NH1	2.30	0.46
1:A:523:LYS:HG3	1:A:534:LEU:HD22	1.98	0.45
1:B:230:GLU:HG3	1:B:262:ILE:CG2	2.45	0.45
1:B:346:TYR:O	1:B:347:SER:HB3	2.17	0.45
1:A:419:LEU:HD11	1:A:423:MET:HE3	1.98	0.45
1:A:20:LYS:HD2	1:A:20:LYS:N	2.31	0.45
1:A:381:VAL:HG11	1:A:474:LEU:CD2	2.47	0.45
1:A:423:MET:HE1	2:A:1001:SNH:S26	2.56	0.45
1:A:517:ARG:HG2	1:A:517:ARG:NH1	2.32	0.45
1:A:59:VAL:CG1	1:B:59:VAL:HG13	2.46	0.45
1:B:545:LEU:HB3	1:B:547:LEU:CD1	2.47	0.45
1:B:233:ILE:HD13	1:B:261:TYR:O	2.17	0.44
1:B:388:PRO:HG2	1:B:488:CYS:SG	2.57	0.44
1:B:549:GLY:HA2	1:B:552:VAL:HG21	1.99	0.44
1:A:119:ILE:CG2	1:A:173:MET:HE1	2.47	0.44
1:A:217:PHE:CD2	1:A:336:LEU:HD21	2.51	0.44
1:A:170:CYS:HA	1:A:173:MET:CE	2.47	0.44
1:A:545:LEU:HB3	1:A:547:LEU:CD1	2.48	0.44
1:B:43:ARG:HH11	1:B:43:ARG:HG3	1.81	0.44
1:B:56:ARG:O	1:B:57:LEU:HD12	2.18	0.44
1:A:139:MET:HE3	3:A:2196:HOH:O	2.17	0.44
1:A:535:LYS:HG3	1:A:536:LEU:N	2.33	0.43
1:A:422:ARG:O	1:A:426:MET:HE2	2.18	0.43

*Continued on next page...*

*Continued from previous page...*

Atom-1	Atom-2	Interatomic distance (Å)	Clash overlap (Å)
1:B:237:GLU:HG3	1:B:257:THR:OG1	2.18	0.43
1:B:535:LYS:CG	1:B:536:LEU:H	2.32	0.43
1:B:374:HIS:CE1	1:B:380:ARG:HG3	2.54	0.43
1:A:508:ARG:HH12	1:A:523:LYS:HA	1.84	0.43
1:B:154:ARG:N	3:B:4154:HOH:O	2.51	0.43
1:B:336:LEU:CD1	1:B:356:PRO:HD3	2.48	0.43
1:B:105:ALA:O	1:B:109:ARG:HG3	2.19	0.43
1:B:527:ASN:ND2	3:B:4117:HOH:O	2.52	0.43
1:A:14:CYS:HB2	1:A:139:MET:CE	2.49	0.42
1:B:429:PHE:O	1:B:433:LEU:HG	2.18	0.42
1:A:309:GLN:O	1:A:324:CYS:HB2	2.20	0.42
1:A:329:THR:HG23	1:A:330:GLN:H	1.83	0.42
1:A:535:LYS:CG	1:A:536:LEU:N	2.82	0.42
1:A:106:LYS:NZ	3:A:2266:HOH:O	2.52	0.42
1:B:482:ILE:HG23	2:B:3001:SNH:H23	2.02	0.42
1:B:527:ASN:HD21	1:B:534:LEU:N	2.17	0.42
1:B:93:PRO:HA	1:B:94:PRO:HD3	1.91	0.42
1:A:394:ARG:O	1:A:398:GLU:HG3	2.20	0.42
1:A:144:VAL:HB	1:A:394:ARG:HG2	2.00	0.42
1:A:495:PRO:HG2	1:A:500:TRP:NE1	2.35	0.41
1:B:485:VAL:O	1:B:489:LEU:HG	2.19	0.41
1:A:19:SER:H	1:A:20:LYS:HZ2	1.66	0.41
1:A:118:HIS:HE1	3:A:2132:HOH:O	2.01	0.41
1:B:523:LYS:HG3	1:B:534:LEU:HD22	2.02	0.41
1:A:93:PRO:HA	1:A:94:PRO:HD3	1.97	0.41
1:A:31:LEU:C	1:A:31:LEU:HD23	2.41	0.41
1:A:183:PRO:HG3	1:A:289:CYS:SG	2.60	0.41
1:A:319:ASP:CG	1:A:366:CYS:H	2.23	0.41
1:A:374:HIS:HE1	1:A:380:ARG:HG3	1.86	0.41
1:A:429:PHE:O	1:A:433:LEU:HG	2.21	0.41
1:B:30:LEU:HD23	1:B:396:ALA:HA	2.03	0.41
1:A:374:HIS:CE1	1:A:380:ARG:HG3	2.56	0.41
1:A:346:TYR:O	1:A:347:SER:HB3	2.21	0.41
1:B:381:VAL:HG11	1:B:474:LEU:HD21	2.02	0.41
1:A:466:LEU:CD2	1:A:551:PHE:HE2	2.34	0.41
1:A:233:ILE:HD13	1:A:261:TYR:O	2.20	0.40
1:B:183:PRO:HG3	1:B:289:CYS:SG	2.61	0.40
1:B:306:ALA:HB3	1:B:308:LEU:HD13	2.02	0.40
1:B:106:LYS:HA	1:B:106:LYS:HD3	1.90	0.40
1:B:527:ASN:HD22	1:B:527:ASN:HA	1.74	0.40

There are no symmetry-related clashes.

## 5.3 Torsion angles

### 5.3.1 Protein backbone

In the following table, the Percentiles column shows the percent Ramachandran outliers of the chain as a percentile score with respect to all X-ray entries followed by that with respect to entries of similar resolution.

The Analysed column shows the number of residues for which the backbone conformation was analysed, and the total number of residues.

Mol	Chain	Analysed	Favoured	Allowed	Outliers	Percentiles	
1	A	554/570 (97%)	539 (97%)	15 (3%)	0	100	100
1	B	554/570 (97%)	541 (98%)	12 (2%)	1 (0%)	47	49
All	All	1108/1140 (97%)	1080 (98%)	27 (2%)	1 (0%)	51	54

All (1) Ramachandran outliers are listed below:

Mol	Chain	Res	Type
1	B	310	ASP

### 5.3.2 Protein sidechains

In the following table, the Percentiles column shows the percent sidechain outliers of the chain as a percentile score with respect to all X-ray entries followed by that with respect to entries of similar resolution.

The Analysed column shows the number of residues for which the sidechain conformation was analysed, and the total number of residues.

Mol	Chain	Analysed	Rotameric	Outliers	Percentiles	
1	A	476/485 (98%)	467 (98%)	9 (2%)	57	63
1	B	476/485 (98%)	466 (98%)	10 (2%)	53	59
All	All	952/970 (98%)	933 (98%)	19 (2%)	55	60

All (19) residues with a non-rotameric sidechain are listed below:

Mol	Chain	Res	Type
1	A	20	LYS
1	A	106	LYS
1	A	303	CYS
1	A	329	THR
1	A	439	LEU

*Continued on next page...*

*Continued from previous page...*

Mol	Chain	Res	Type
1	A	440	GLU
1	A	510	ARG
1	A	517	ARG
1	A	527	ASN
1	B	20	LYS
1	B	47	LEU
1	B	81	LYS
1	B	83	LEU
1	B	159	LEU
1	B	303	CYS
1	B	439	LEU
1	B	440	GLU
1	B	510	ARG
1	B	527	ASN

Sometimes sidechains can be flipped to improve hydrogen bonding and reduce clashes. All (12) such sidechains are listed below:

Mol	Chain	Res	Type
1	A	49	GLN
1	A	273	ASN
1	A	374	HIS
1	A	514	GLN
1	A	527	ASN
1	A	544	GLN
1	B	49	GLN
1	B	273	ASN
1	B	374	HIS
1	B	461	GLN
1	B	527	ASN
1	B	544	GLN

### 5.3.3 RNA ⓘ

There are no RNA molecules in this entry.

## 5.4 Non-standard residues in protein, DNA, RNA chains ⓘ

There are no non-standard protein/DNA/RNA residues in this entry.

## 5.5 Carbohydrates [i](#)

There are no monosaccharides in this entry.

## 5.6 Ligand geometry [i](#)

4 ligands are modelled in this entry.

In the following table, the Counts columns list the number of bonds (or angles) for which Mogul statistics could be retrieved, the number of bonds (or angles) that are observed in the model and the number of bonds (or angles) that are defined in the Chemical Component Dictionary. The Link column lists molecule types, if any, to which the group is linked. The Z score for a bond length (or angle) is the number of standard deviations the observed value is removed from the expected value. A bond length (or angle) with  $|Z| > 2$  is considered an outlier worth inspection. RMSZ is the root-mean-square of all Z scores of the bond lengths (or angles).

Mol	Type	Chain	Res	Link	Bond lengths			Bond angles		
					Counts	RMSZ	# $ Z  > 2$	Counts	RMSZ	# $ Z  > 2$
2	SNH	B	3001	-	24,30,30	1.96	7 (29%)	25,45,45	1.49	3 (12%)
2	SNH	A	1001	-	24,30,30	2.09	9 (37%)	25,45,45	1.49	3 (12%)
2	SNH	A	2001	-	24,30,30	2.39	10 (41%)	25,45,45	1.84	5 (20%)
2	SNH	B	4001	-	24,30,30	3.23	9 (37%)	25,45,45	2.17	11 (44%)

In the following table, the Chirals column lists the number of chiral outliers, the number of chiral centers analysed, the number of these observed in the model and the number defined in the Chemical Component Dictionary. Similar counts are reported in the Torsion and Rings columns. '-' means no outliers of that kind were identified.

Mol	Type	Chain	Res	Link	Chirals	Torsions	Rings
2	SNH	B	3001	-	-	0/9/23/23	0/3/3/3
2	SNH	A	1001	-	-	0/9/23/23	0/3/3/3
2	SNH	A	2001	-	-	3/9/23/23	0/3/3/3
2	SNH	B	4001	-	-	1/9/23/23	0/3/3/3

All (35) bond length outliers are listed below:

Mol	Chain	Res	Type	Atoms	Z	Observed(Å)	Ideal(Å)
2	B	4001	SNH	C19-C14	7.77	1.49	1.40
2	B	4001	SNH	O13-S11	6.65	1.51	1.43
2	B	4001	SNH	C14-S11	-6.61	1.68	1.77
2	B	4001	SNH	C15-C14	6.56	1.46	1.39
2	A	1001	SNH	C2-C3	5.57	1.44	1.39
2	A	2001	SNH	C19-C14	5.09	1.46	1.40

*Continued on next page...*

*Continued from previous page...*

Mol	Chain	Res	Type	Atoms	Z	Observed(Å)	Ideal(Å)
2	A	2001	SNH	C15-C14	4.72	1.44	1.39
2	B	3001	SNH	C2-C3	4.70	1.43	1.39
2	A	2001	SNH	C14-S11	4.10	1.83	1.77
2	B	4001	SNH	C2-C3	3.99	1.43	1.39
2	A	2001	SNH	S11-N9	3.94	1.69	1.63
2	A	2001	SNH	C2-C3	3.78	1.42	1.39
2	B	4001	SNH	O12-S11	3.53	1.47	1.43
2	A	1001	SNH	S11-N9	3.35	1.68	1.63
2	B	3001	SNH	C15-C14	3.25	1.43	1.39
2	A	1001	SNH	C15-C14	3.21	1.42	1.39
2	B	3001	SNH	C19-C14	3.07	1.44	1.40
2	A	1001	SNH	C19-C14	3.04	1.44	1.40
2	B	3001	SNH	S11-N9	2.89	1.68	1.63
2	B	3001	SNH	C18-C19	2.87	1.43	1.39
2	A	1001	SNH	C18-C19	2.80	1.43	1.39
2	A	2001	SNH	C16-C15	2.66	1.43	1.38
2	A	1001	SNH	C14-S11	2.62	1.81	1.77
2	B	4001	SNH	C18-C19	2.61	1.43	1.39
2	B	3001	SNH	C14-S11	2.56	1.81	1.77
2	A	1001	SNH	C18-C17	2.54	1.43	1.39
2	A	2001	SNH	O13-S11	2.47	1.46	1.43
2	A	2001	SNH	O12-S11	2.31	1.46	1.43
2	A	2001	SNH	C18-C19	2.26	1.42	1.39
2	B	4001	SNH	C16-C15	2.21	1.42	1.38
2	B	3001	SNH	C18-C17	2.20	1.42	1.39
2	A	2001	SNH	C18-C17	2.20	1.42	1.39
2	A	1001	SNH	O13-S11	2.12	1.46	1.43
2	B	4001	SNH	C3-N9	-2.07	1.39	1.42
2	A	1001	SNH	C16-C15	2.03	1.42	1.38

All (22) bond angle outliers are listed below:

Mol	Chain	Res	Type	Atoms	Z	Observed(°)	Ideal(°)
2	A	2001	SNH	O13-S11-O12	-5.80	112.47	119.52
2	B	4001	SNH	C15-C14-C19	-5.30	116.37	121.17
2	B	4001	SNH	O13-S11-O12	-5.18	113.22	119.52
2	A	1001	SNH	O13-S11-O12	-5.11	113.32	119.52
2	B	3001	SNH	O13-S11-O12	-4.95	113.51	119.52
2	B	4001	SNH	C18-C19-C14	2.85	118.94	116.99
2	A	2001	SNH	C19-C14-S11	2.85	124.54	122.02
2	A	2001	SNH	C15-C14-C19	-2.78	118.65	121.17
2	B	4001	SNH	C14-S11-N9	-2.73	104.08	107.30

*Continued on next page...*

*Continued from previous page...*

Mol	Chain	Res	Type	Atoms	Z	Observed(°)	Ideal(°)
2	B	4001	SNH	O13-S11-N9	2.70	113.32	106.74
2	B	4001	SNH	C24-C23-C22	2.35	113.50	108.66
2	B	4001	SNH	O12-S11-C14	-2.34	103.82	107.68
2	A	2001	SNH	C24-C23-C22	2.33	113.45	108.66
2	A	1001	SNH	C24-C23-C22	2.28	113.35	108.66
2	B	4001	SNH	C20-C19-C18	-2.27	115.57	119.57
2	A	2001	SNH	O12-S11-N9	2.26	112.26	106.74
2	B	3001	SNH	C24-C23-C22	2.22	113.24	108.66
2	B	3001	SNH	C15-C14-C19	-2.17	119.20	121.17
2	B	4001	SNH	C28-C27-C25	2.17	120.33	118.25
2	B	4001	SNH	O12-S11-N9	2.05	111.73	106.74
2	A	1001	SNH	C15-C14-C19	-2.02	119.34	121.17
2	B	4001	SNH	C15-C14-S11	2.00	120.39	117.51

There are no chirality outliers.

All (4) torsion outliers are listed below:

Mol	Chain	Res	Type	Atoms
2	A	2001	SNH	C3-N9-S11-O13
2	A	2001	SNH	C3-N9-S11-O12
2	A	2001	SNH	C3-N9-S11-C14
2	B	4001	SNH	C19-C14-S11-O12

There are no ring outliers.

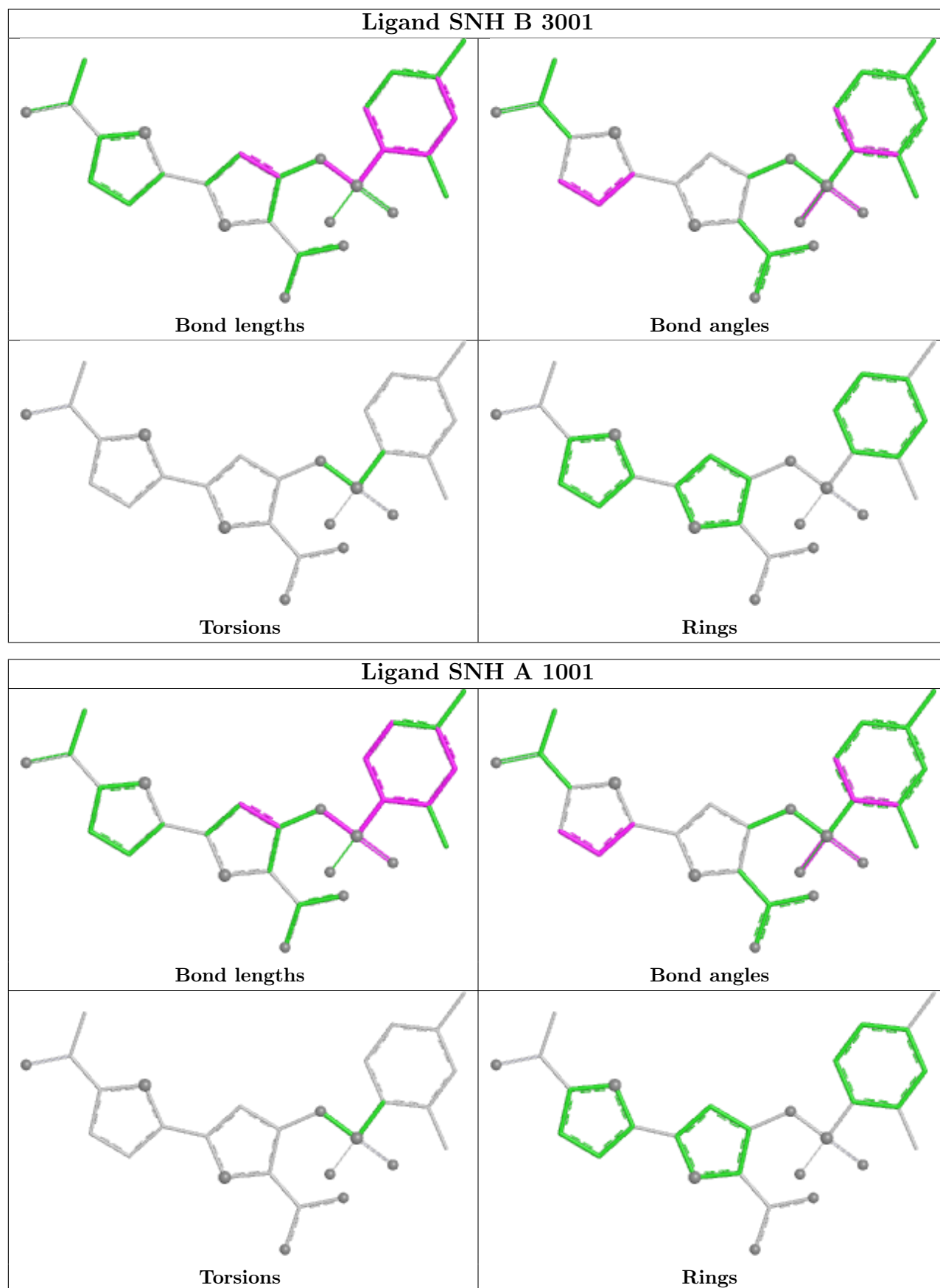
3 monomers are involved in 6 short contacts:

Mol	Chain	Res	Type	Clashes	Symm-Clashes
2	B	3001	SNH	3	0
2	A	1001	SNH	2	0
2	A	2001	SNH	1	0

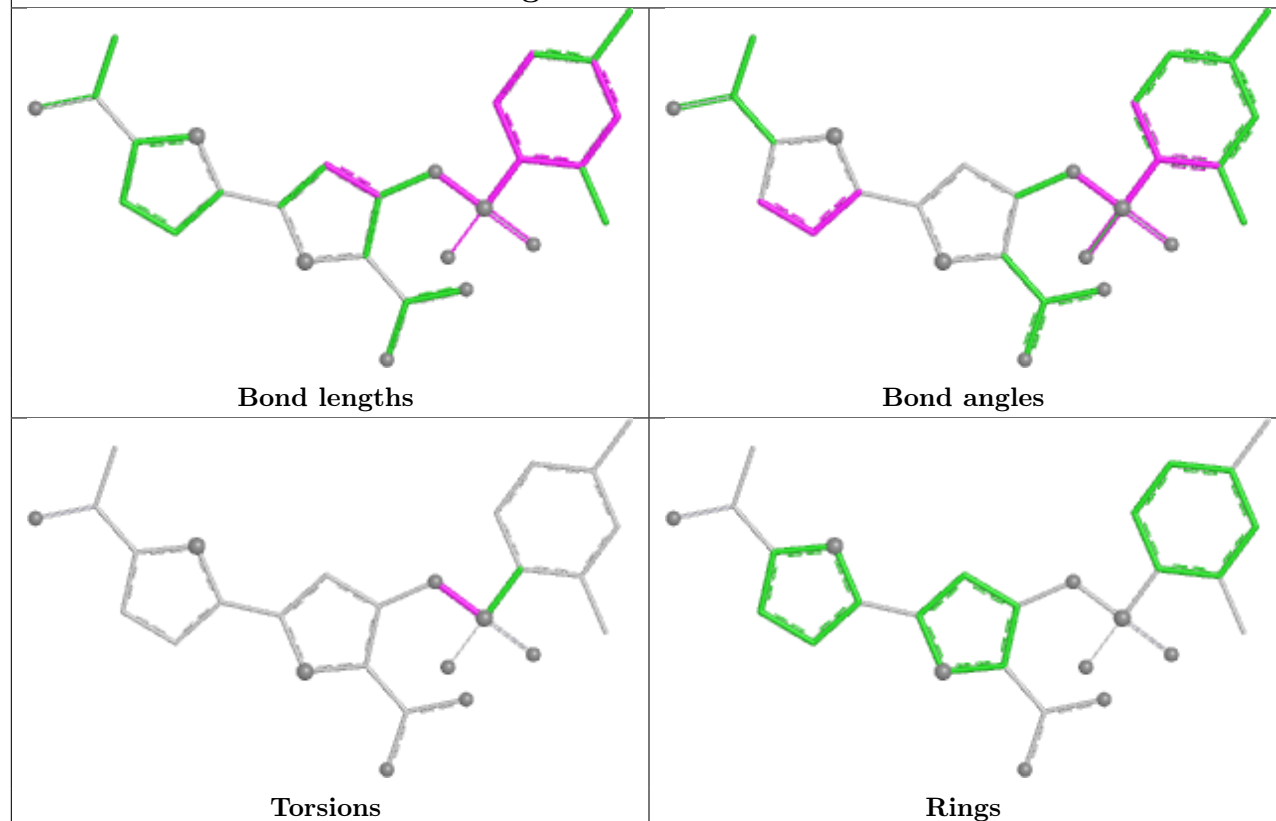
The following is a two-dimensional graphical depiction of Mogul quality analysis of bond lengths, bond angles, torsion angles, and ring geometry for all instances of the Ligand of Interest. In addition, ligands with molecular weight > 250 and outliers as shown on the validation Tables will also be included. For torsion angles, if less than 5% of the Mogul distribution of torsion angles is within 10 degrees of the torsion angle in question, then that torsion angle is considered an outlier. Any bond that is central to one or more torsion angles identified as an outlier by Mogul will be highlighted in the graph. For rings, the root-mean-square deviation (RMSD) between the ring in question and similar rings identified by Mogul is calculated over all ring torsion angles. If the average RMSD is greater than 60 degrees and the minimal RMSD between the ring in question and any Mogul-identified rings is also greater than 60 degrees, then that ring is considered an outlier. The outliers are highlighted in purple. The color gray indicates Mogul did not find sufficient



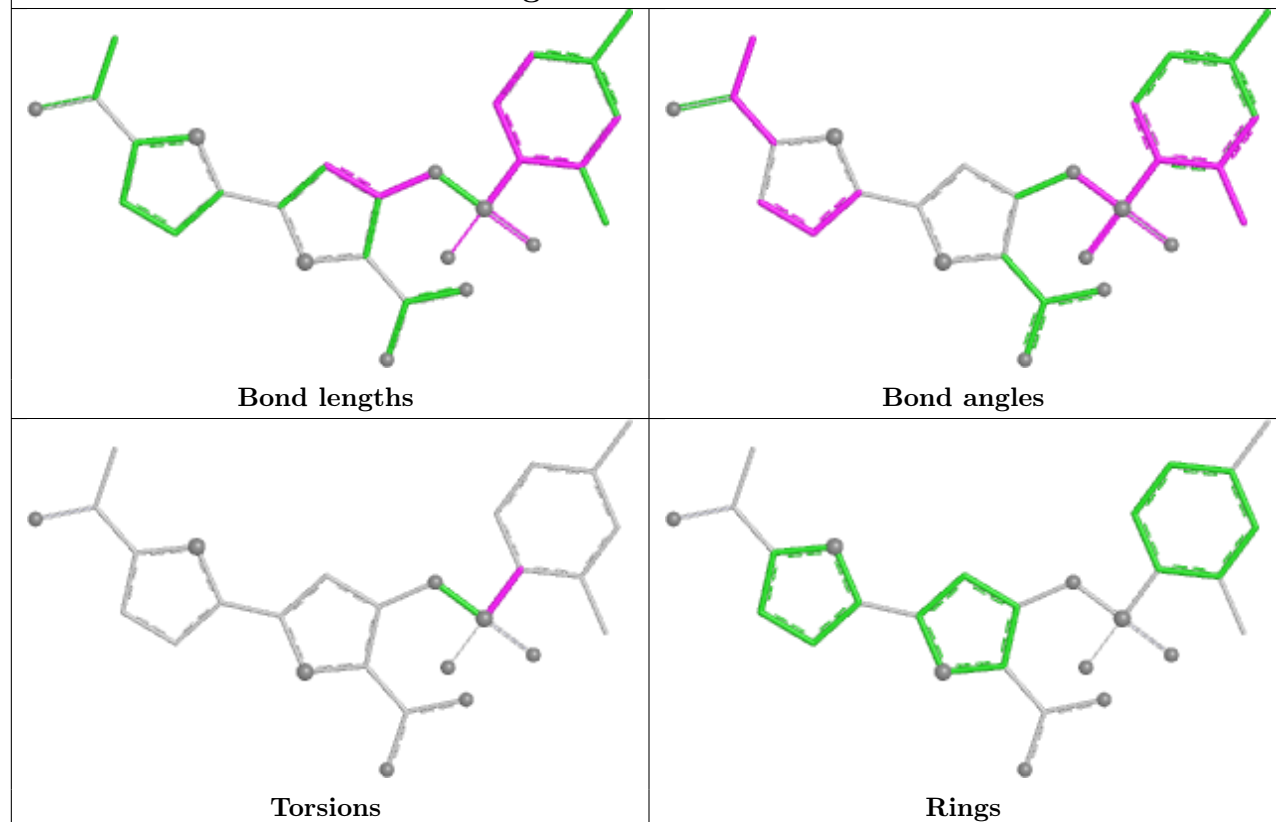
equivalents in the CSD to analyse the geometry.



## Ligand SNH A 2001



## Ligand SNH B 4001



## 5.7 Other polymers [i](#)

There are no such residues in this entry.

## 5.8 Polymer linkage issues [i](#)

There are no chain breaks in this entry.

## 6 Fit of model and data

### 6.1 Protein, DNA and RNA chains

In the following table, the column labelled ‘#RSRZ> 2’ contains the number (and percentage) of RSRZ outliers, followed by percent RSRZ outliers for the chain as percentile scores relative to all X-ray entries and entries of similar resolution. The OWAB column contains the minimum, median, 95<sup>th</sup> percentile and maximum values of the occupancy-weighted average B-factor per residue. The column labelled ‘Q< 0.9’ lists the number of (and percentage) of residues with an average occupancy less than 0.9.

Mol	Chain	Analysed	<RSRZ>	#RSRZ>2		OWAB(Å <sup>2</sup> )	Q<0.9
1	A	558/570 (97%)	0.10	22 (3%)	39 45	13, 26, 45, 72	0
1	B	558/570 (97%)	0.06	22 (3%)	39 45	14, 25, 44, 69	0
All	All	1116/1140 (97%)	0.08	44 (3%)	39 45	13, 25, 44, 72	0

All (44) RSRZ outliers are listed below:

Mol	Chain	Res	Type	RSRZ
1	B	544	GLN	5.9
1	A	544	GLN	5.9
1	A	541	ALA	5.1
1	B	541	ALA	4.9
1	B	548	SER	4.4
1	B	543	SER	4.3
1	B	563	SER	3.9
1	B	540	PRO	3.9
1	A	545	LEU	3.4
1	A	563	SER	3.3
1	B	550	TRP	3.3
1	A	535	LYS	3.2
1	B	535	LYS	3.2
1	B	546	ASP	3.2
1	A	548	SER	3.2
1	A	540	PRO	3.1
1	A	331	GLU	3.1
1	B	309	GLN	3.0
1	B	545	LEU	2.8
1	A	106	LYS	2.8
1	B	148	GLN	2.7
1	A	14	CYS	2.6
1	B	562	HIS	2.6
1	A	543	SER	2.5

*Continued on next page...*

*Continued from previous page...*

Mol	Chain	Res	Type	RSRZ
1	A	148	GLN	2.5
1	A	536	LEU	2.5
1	B	212	LYS	2.4
1	B	516	GLY	2.4
1	A	539	ILE	2.4
1	B	32	ARG	2.4
1	A	110	ASN	2.3
1	B	561	TYR	2.3
1	B	536	LEU	2.3
1	A	498	ARG	2.3
1	B	542	ALA	2.3
1	B	209	LYS	2.2
1	A	43	ARG	2.1
1	B	43	ARG	2.1
1	B	549	GLY	2.1
1	A	16	ALA	2.1
1	A	212	LYS	2.1
1	A	32	ARG	2.0
1	A	549	GLY	2.0
1	A	550	TRP	2.0

## 6.2 Non-standard residues in protein, DNA, RNA chains [i](#)

There are no non-standard protein/DNA/RNA residues in this entry.

## 6.3 Carbohydrates [i](#)

There are no monosaccharides in this entry.

## 6.4 Ligands [i](#)

In the following table, the Atoms column lists the number of modelled atoms in the group and the number defined in the chemical component dictionary. The B-factors column lists the minimum, median, 95<sup>th</sup> percentile and maximum values of B factors of atoms in the group. The column labelled 'Q< 0.9' lists the number of atoms with occupancy less than 0.9.

Mol	Type	Chain	Res	Atoms	RSCC	RSR	B-factors( $\text{\AA}^2$ )	Q<0.9
2	SNH	A	2001	28/28	0.70	0.34	62,66,78,79	0
2	SNH	B	4001	28/28	0.86	0.22	40,45,47,49	0
2	SNH	A	1001	28/28	0.96	0.11	19,26,29,32	0

*Continued on next page...*

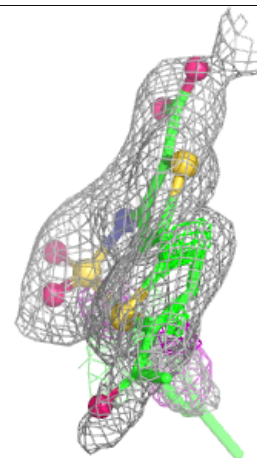
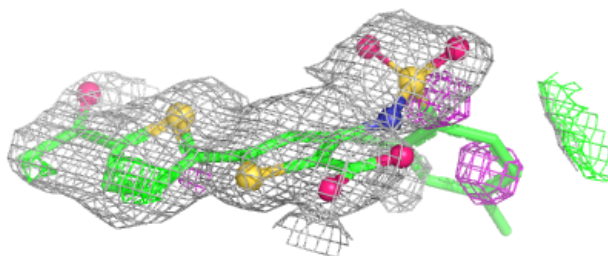
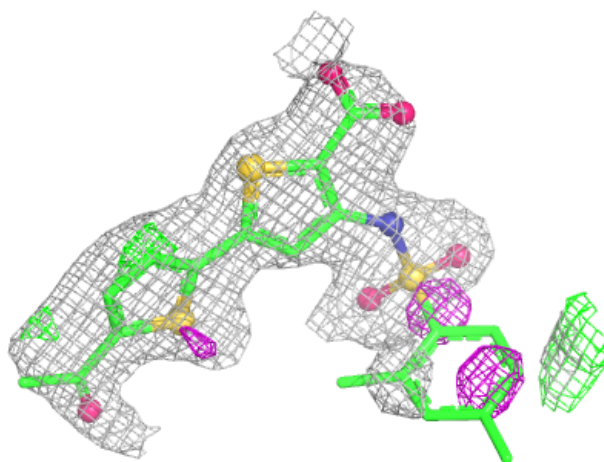
*Continued from previous page...*

Mol	Type	Chain	Res	Atoms	RSCC	RSR	B-factors( $\text{\AA}^2$ )	Q<0.9
2	SNH	B	3001	28/28	0.97	0.11	22,26,28,29	0

The following is a graphical depiction of the model fit to experimental electron density of all instances of the Ligand of Interest. In addition, ligands with molecular weight > 250 and outliers as shown on the geometry validation Tables will also be included. Each fit is shown from different orientation to approximate a three-dimensional view.

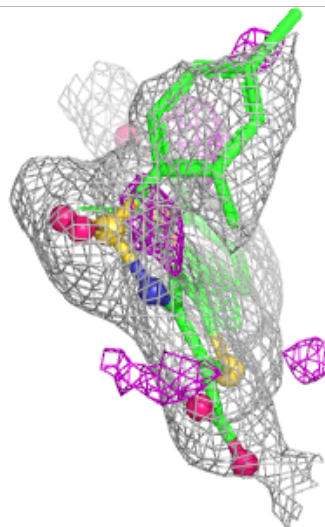
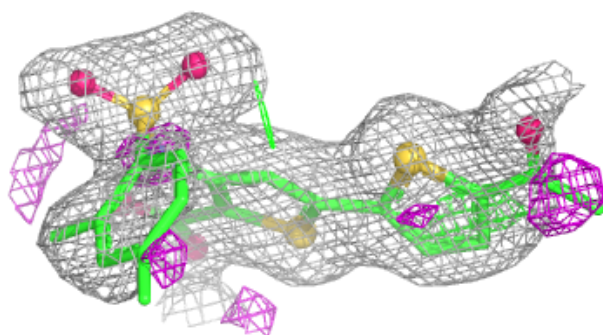
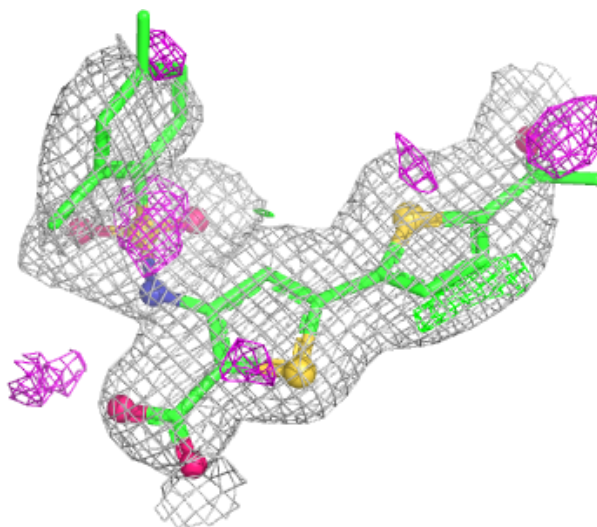
**Electron density around SNH A 2001:**

2mF<sub>o</sub>-DF<sub>c</sub> (at 0.7 rmsd) in gray  
mF<sub>o</sub>-DF<sub>c</sub> (at 3 rmsd) in purple (negative)  
and green (positive)



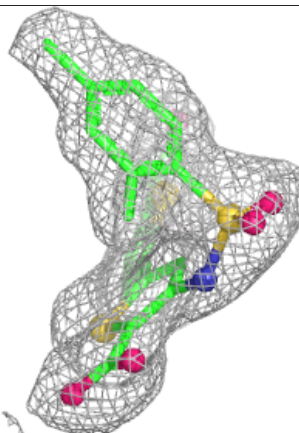
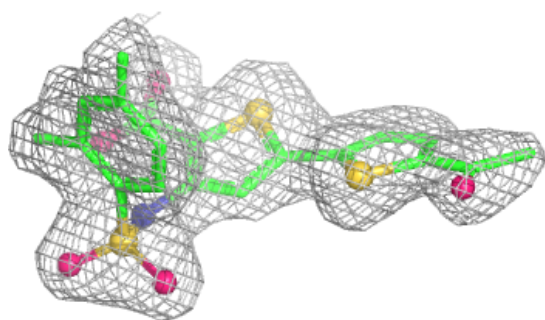
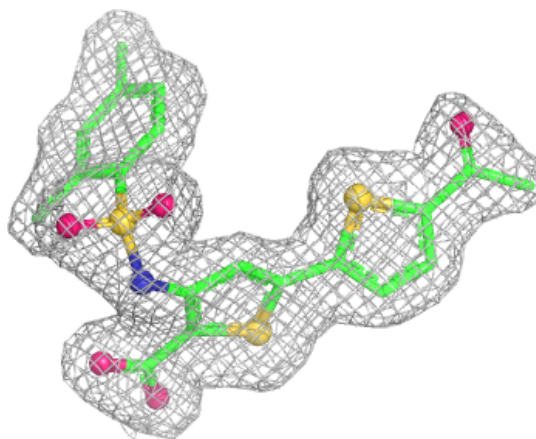
**Electron density around SNH B 4001:**

$2mF_o-DF_c$  (at 0.7 rmsd) in gray  
 $mF_o-DF_c$  (at 3 rmsd) in purple (negative)  
and green (positive)

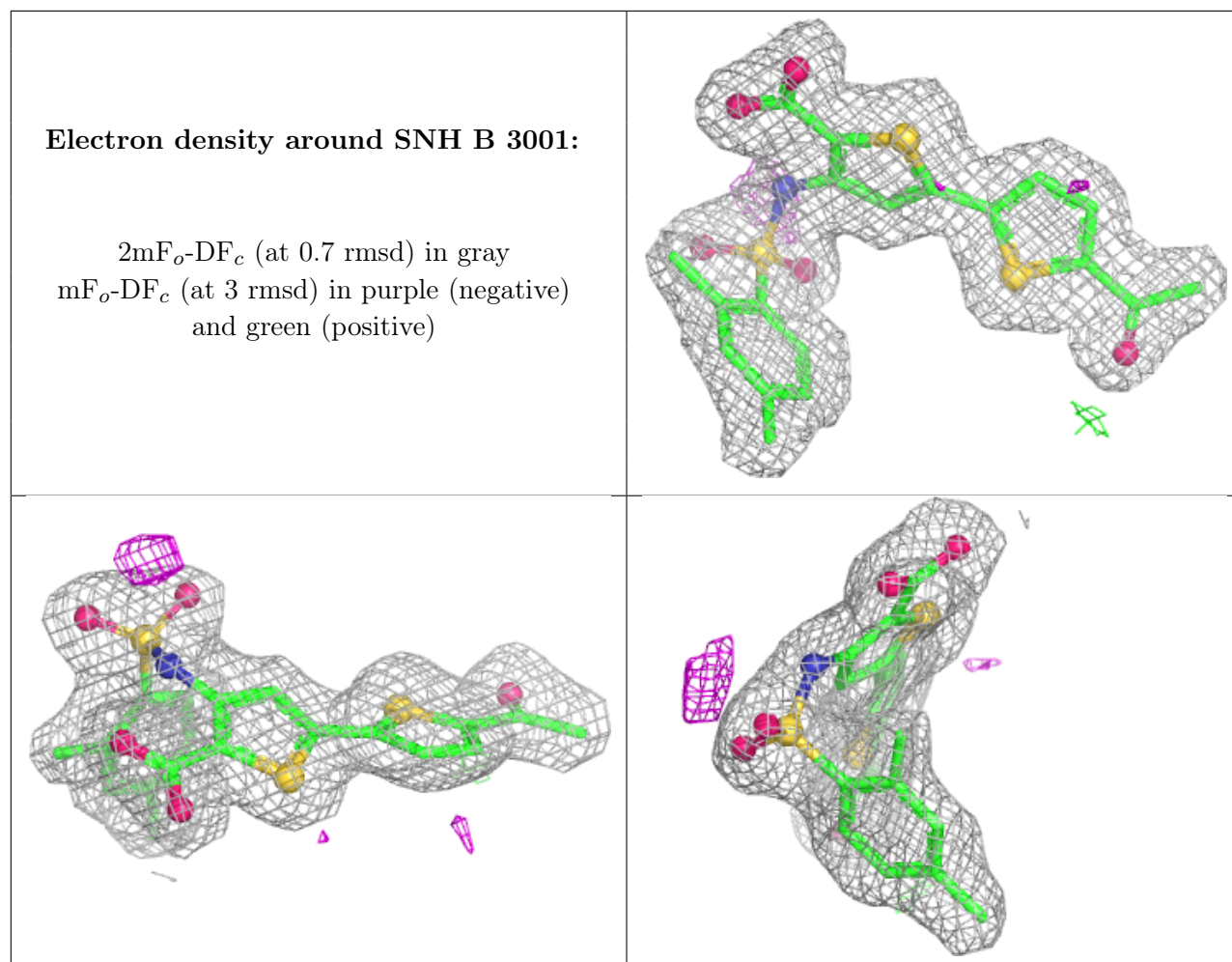


**Electron density around SNH A 1001:**

$2mF_o-DF_c$  (at 0.7 rmsd) in gray  
 $mF_o-DF_c$  (at 3 rmsd) in purple (negative)  
and green (positive)







## 6.5 Other polymers [i](#)

There are no such residues in this entry.