



# wwPDB X-ray Structure Validation Summary Report ⓘ

Oct 13, 2024 – 02:48 am BST

PDB ID : 4D39  
Title : Structure of bovine endothelial nitric oxide synthase heme domain in complex with 2-(2-(1H-imidazol-1-yl)pyrimidin-4-yl)-N-(3-cyanobenzyl) ethan-1-amine  
Authors : Li, H.; Poulos, T.L.  
Deposited on : 2014-10-20  
Resolution : 2.00 Å (reported)

This is a wwPDB X-ray Structure Validation Summary Report for a publicly released PDB entry.

We welcome your comments at [validation@mail.wwpdb.org](mailto:validation@mail.wwpdb.org)

A user guide is available at

<https://www.wwpdb.org/validation/2017/XrayValidationReportHelp>

with specific help available everywhere you see the ⓘ symbol.

The types of validation reports are described at

<http://www.wwpdb.org/validation/2017/FAQs#types>.

---

The following versions of software and data (see [references ⓘ](#)) were used in the production of this report:

MolProbity : 4.02b-467  
Mogul : 1.8.4, CSD as541be (2020)  
Xtriage (Phenix) : 1.13  
EDS : 3.0  
buster-report : 1.1.7 (2018)  
Percentile statistics : 20231227.v01 (using entries in the PDB archive December 27th 2023)  
CCP4 : 9.0.003 (Gargrove)  
Density-Fitness : 1.0.11  
Ideal geometry (proteins) : Engh & Huber (2001)  
Ideal geometry (DNA, RNA) : Parkinson et al. (1996)  
Validation Pipeline (wwPDB-VP) : 2.39

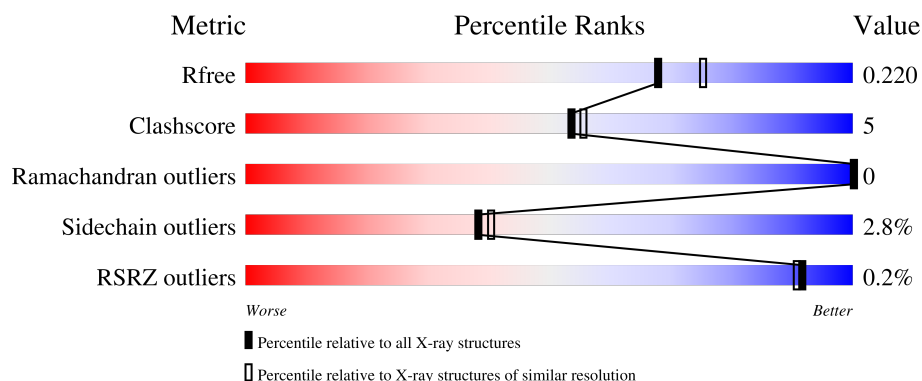
# 1 Overall quality at a glance

The following experimental techniques were used to determine the structure:

## *X-RAY DIFFRACTION*



The reported resolution of this entry is 2.00 Å.

Percentile scores (ranging between 0-100) for global validation metrics of the entry are shown in the following graphic. The table shows the number of entries on which the scores are based.



Metric	Whole archive (#Entries)	Similar resolution (#Entries, resolution range(Å))
$R_{free}$	164625	9409 (2.00-2.00)
Clashscore	180529	10737 (2.00-2.00)
Ramachandran outliers	177936	10628 (2.00-2.00)
Sidechain outliers	177891	10627 (2.00-2.00)
RSRZ outliers	164620	9409 (2.00-2.00)

The table below summarises the geometric issues observed across the polymeric chains and their fit to the electron density. The red, orange, yellow and green segments of the lower bar indicate the fraction of residues that contain outliers for  $\geq 3$ , 2, 1 and 0 types of geometric quality criteria respectively. A grey segment represents the fraction of residues that are not modelled. The numeric value for each fraction is indicated below the corresponding segment, with a dot representing fractions  $\leq 5\%$ . The upper red bar (where present) indicates the fraction of residues that have poor fit to the electron density. The numeric value is given above the bar.

Mol	Chain	Length	Quality of chain
1	A	443	 81% 9% • 9%
1	B	443	 80% 10% • 9%

The following table lists non-polymeric compounds, carbohydrate monomers and non-standard residues in protein, DNA, RNA chains that are outliers for geometric or electron-density-fit criteria:

Mol	Type	Chain	Res	Chirality	Geometry	Clashes	Electron density
7	GOL	B	880	-	-	X	-

## 2 Entry composition [i](#)

There are 9 unique types of molecules in this entry. The entry contains 7162 atoms, of which 0 are hydrogens and 0 are deuteriums.

In the tables below, the ZeroOcc column contains the number of atoms modelled with zero occupancy, the AltConf column contains the number of residues with at least one atom in alternate conformation and the Trace column contains the number of residues modelled with at most 2 atoms.

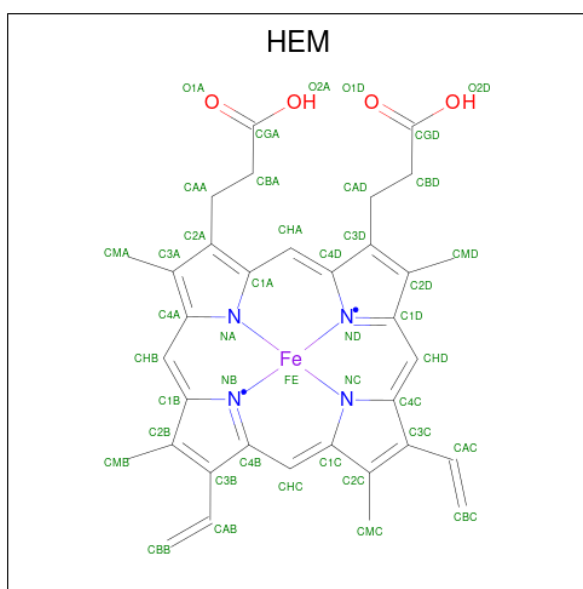
- Molecule 1 is a protein called NITRIC OXIDE SYNTHASE, ENDOTHELIAL.

Mol	Chain	Residues	Atoms						ZeroOcc	AltConf	Trace
1	A	405	Total	As	C	N	O	S	0	1	0
			3231	1	2053	569	592	16			
1	B	404	Total	As	C	N	O	S	0	0	0
			3221	1	2048	568	588	16			

There are 2 discrepancies between the modelled and reference sequences:

Chain	Residue	Modelled	Actual	Comment	Reference
A	100	ARG	CYS	SEE REMARK 999	UNP P29473
B	100	ARG	CYS	SEE REMARK 999	UNP P29473

- Molecule 2 is PROTOPORPHYRIN IX CONTAINING FE (three-letter code: HEM) (formula:  $C_{34}H_{32}FeN_4O_4$ ).



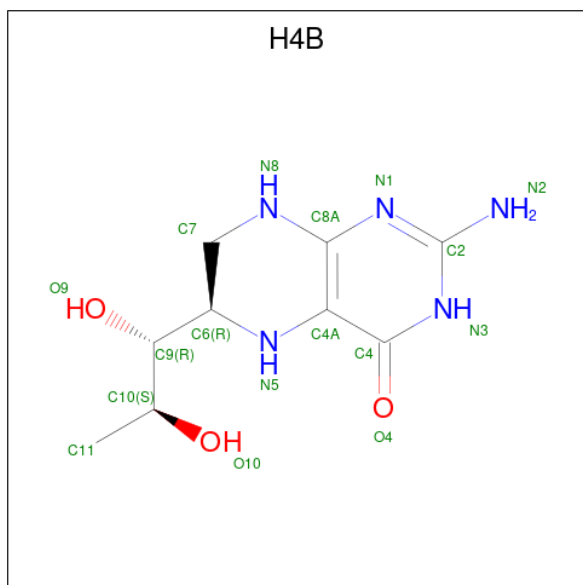
Mol	Chain	Residues	Atoms					ZeroOcc	AltConf
2	A	1	Total	C	Fe	N	O	0	0
			43	34	1	4	4		

*Continued on next page...*

Continued from previous page...

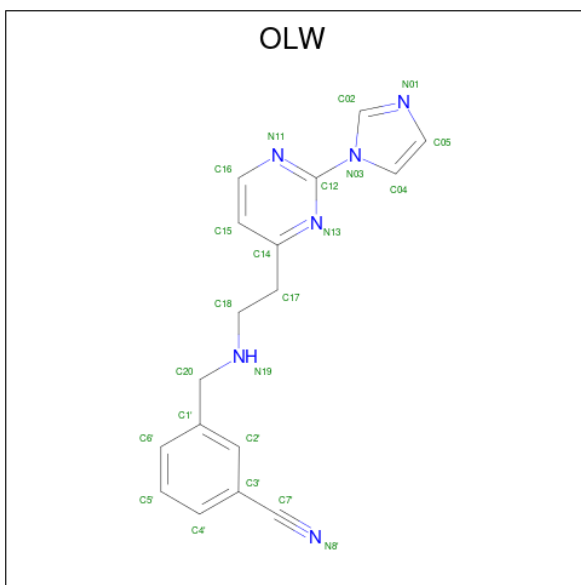
Mol	Chain	Residues	Atoms					ZeroOcc	AltConf
2	B	1	Total	C	Fe	N	O	0	0
			43	34	1	4	4		

- Molecule 3 is 5,6,7,8-TETRAHYDROBIOPTERIN (three-letter code: H4B) (formula:  $C_9H_{15}N_5O_3$ ).



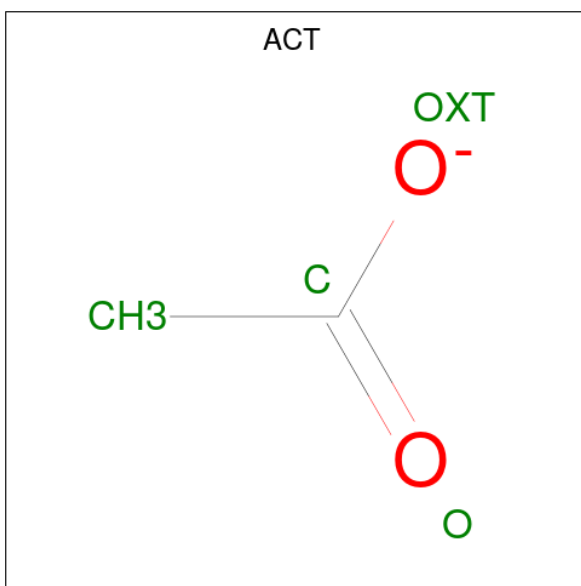
Mol	Chain	Residues	Atoms				ZeroOcc	AltConf
3	A	1	Total	C	N	O	0	0
			17	9	5	3		
3	B	1	Total	C	N	O	0	0
			17	9	5	3		

- Molecule 4 is 3-[(2-[2-(1H-imidazol-1-yl)pyrimidin-4-yl]ethyl)amino)methyl]benzonitrile (three-letter code: OLW) (formula:  $C_{17}H_{16}N_6$ ).



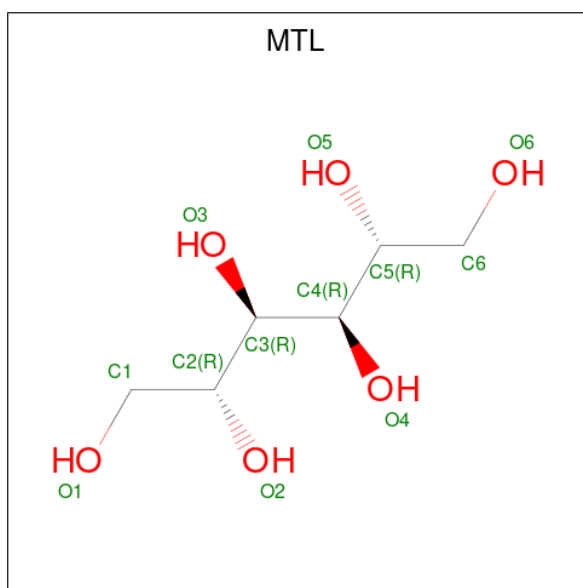
Mol	Chain	Residues	Atoms			ZeroOcc	AltConf
4	A	1	Total	C	N	0	0
			23	17	6		
4	B	1	Total	C	N	0	0
			23	17	6		

- Molecule 5 is ACETATE ION (three-letter code: ACT) (formula:  $C_2H_3O_2$ ).



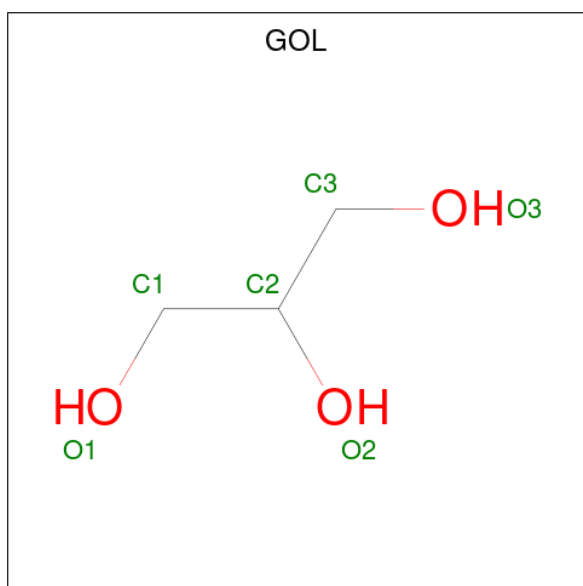
Mol	Chain	Residues	Atoms			ZeroOcc	AltConf
5	A	1	Total	C	O	0	0
			4	2	2		
5	B	1	Total	C	O	0	0
			4	2	2		

- Molecule 6 is D-MANNITOL (three-letter code: MTL) (formula:  $C_6H_{14}O_6$ ).



Mol	Chain	Residues	Atoms			ZeroOcc	AltConf
6	A	1	Total	C	O	0	0
			12	6	6		
6	B	1	Total	C	O	0	0
			12	6	6		

- Molecule 7 is GLYCEROL (three-letter code: GOL) (formula:  $C_3H_8O_3$ ).



Mol	Chain	Residues	Atoms			ZeroOcc	AltConf
7	A	1	Total	C	O	0	0
			6	3	3		

*Continued on next page...*

*Continued from previous page...*

Mol	Chain	Residues	Atoms			ZeroOcc	AltConf
7	B	1	Total	C	O	0	0
			6	3	3		

- Molecule 8 is ZINC ION (three-letter code: ZN) (formula: Zn).

Mol	Chain	Residues	Atoms		ZeroOcc	AltConf
8	A	1	Total	Zn	0	0
			1	1		

- Molecule 9 is water.

Mol	Chain	Residues	Atoms		ZeroOcc	AltConf
9	A	287	Total	O	0	0
			287	287		
9	B	212	Total	O	0	0
			212	212		





- Molecule 1: NITRIC OXIDE SYNTHASE, ENDOTHELIAL

P121	L125	L152	Q153	E154	V155	E156	R168	C186	R240	R244	I245	W246	Q249	R252	N269	V270	E271	L293	L294	P298	L328	N340	E344	R367	L378	T389	T392	W396	W449	S455	L458	E465	S472	P473																						
R476	P481	W482																																																						
ARG	ALA	PRO	ALA	ALA	THR	PRO	HIS	ASP	HIS	SER	PRO	ALA	ALA	PRO	ASN	SER	PRO	THR	LEU	THR	ARG	PRO	PRO	GLU	G67	F70	P71	R72		Y83	D84	T85		D83		R99	R100	C101	L102		L105	V106	L107	P108	R109	LYS	LEU	GLN	THR	ARG	PRO	SER	PRO	GLY	PRO	PRO

- Molecule 1: NITRIC OXIDE SYNTHASE, ENDOTHELIAL

Category	Item	Value	
Left Column	C370	0.000	
	L378	0.000	
	H423	0.000	
	W449	0.000	
	E465	0.000	
	W492	0.000	
	Right Column	K141	0.000
		R142	0.000
		E154	0.000
		V155	0.000
		E156	0.000
		L167	0.000
		R168	0.000
		G175	0.000
		W180	0.000
		W192	0.000
K218		0.000	
T231		0.000	
R236		0.000	
R240		0.000	
G241		0.000	
D242		0.000	
Q249		0.000	
R252		0.000	
Q259		0.000	
N269		0.000	
W281		0.000	
L304		0.000	
L311		0.000	
H319		0.000	
P320		0.000	
T321		0.000	
L322		0.000	
E323		0.000	
W324		0.000	
L330		0.000	
R331		0.000	
I345		0.000	
L348	0.000		
S351	0.000		
P354	0.000		
T366	0.000		
Bottom Row	ARG	0.000	
	ALA	0.000	
	PRO	0.000	
	ALA	0.000	
	PRO	0.000	
	ALA	0.000	
	THR	0.000	
	PRO	0.000	
	HIS	0.000	
	ALA	0.000	
	ASP	0.000	
	HIS	0.000	
	SER	0.000	
	PRO	0.000	
	ALA	0.000	
	PRO	0.000	
ASN	0.000		
SER	0.000		
PRO	0.000		
THR	0.000		
LEU	0.000		
THR	0.000		
ARG	0.000		
PRO	0.000		
GLU	0.000		
GLY	0.000		
PRO	0.000		
K69	0.000		
D93	0.000		
R99	0.000		
R100	0.000		
C101	0.000		
L102	0.000		
L105	0.000		
K110	0.000		
LEU	0.000		
GLN	0.000		
THR	0.000		
ARG	0.000		
PRO	0.000		
SER	0.000		
PRO	0.000		
GLY	0.000		
PRO	0.000		
P121	0.000		
A122	0.000		
E123	0.000		
Q124	0.000		
L125	0.000		
L126	0.000		
R130	0.000		

## 4 Data and refinement statistics

Property	Value	Source
Space group	P 21 21 21	Depositor
Cell constants a, b, c, $\alpha$ , $\beta$ , $\gamma$	57.76Å 106.12Å 156.31Å 90.00° 90.00° 90.00°	Depositor
Resolution (Å)	39.08 – 2.00 39.08 – 2.00	Depositor EDS
% Data completeness (in resolution range)	99.5 (39.08-2.00) 99.6 (39.08-2.00)	Depositor EDS
$R_{merge}$	0.13	Depositor
$R_{sym}$	(Not available)	Depositor
$\langle I/\sigma(I) \rangle$ <sup>1</sup>	1.29 (at 1.91Å)	Xtriage
Refinement program	PHENIX (PHENIX.REFINE)	Depositor
R, $R_{free}$	0.172 , 0.222 0.169 , 0.220	Depositor DCC
$R_{free}$ test set	3284 reflections (5.01%)	wwPDB-VP
Wilson B-factor (Å <sup>2</sup> )	36.9	Xtriage
Anisotropy	0.200	Xtriage
Bulk solvent $k_{sol}$ (e/Å <sup>3</sup> ), $B_{sol}$ (Å <sup>2</sup> )	0.36 , 44.3	EDS
L-test for twinning <sup>2</sup>	$\langle  L  \rangle = 0.48$ , $\langle L^2 \rangle = 0.31$	Xtriage
Estimated twinning fraction	No twinning to report.	Xtriage
$F_o, F_c$ correlation	0.97	EDS
Total number of atoms	7162	wwPDB-VP
Average B, all atoms (Å <sup>2</sup> )	42.0	wwPDB-VP

Xtriage's analysis on translational NCS is as follows: *The largest off-origin peak in the Patterson function is 3.36% of the height of the origin peak. No significant pseudotranslation is detected.*

<sup>1</sup>Intensities estimated from amplitudes.

<sup>2</sup>Theoretical values of  $\langle |L| \rangle$ ,  $\langle L^2 \rangle$  for acentric reflections are 0.5, 0.333 respectively for untwinned datasets, and 0.375, 0.2 for perfectly twinned datasets.

## 5 Model quality

### 5.1 Standard geometry

Bond lengths and bond angles in the following residue types are not validated in this section: H4B, HEM, CAS, GOL, OLW, ACT, MTL, ZN

The Z score for a bond length (or angle) is the number of standard deviations the observed value is removed from the expected value. A bond length (or angle) with  $|Z| > 5$  is considered an outlier worth inspection. RMSZ is the root-mean-square of all Z scores of the bond lengths (or angles).

Mol	Chain	Bond lengths		Bond angles	
		RMSZ	# Z  >5	RMSZ	# Z  >5
1	A	0.39	0/3311	0.53	0/4508
1	B	0.40	0/3300	0.53	0/4491
All	All	0.39	0/6611	0.53	0/8999

There are no bond length outliers.

There are no bond angle outliers.

There are no chirality outliers.

There are no planarity outliers.

### 5.2 Too-close contacts

In the following table, the Non-H and H(model) columns list the number of non-hydrogen atoms and hydrogen atoms in the chain respectively. The H(added) column lists the number of hydrogen atoms added and optimized by MolProbity. The Clashes column lists the number of clashes within the asymmetric unit, whereas Symm-Clashes lists symmetry-related clashes.

Mol	Chain	Non-H	H(model)	H(added)	Clashes	Symm-Clashes
1	A	3231	0	3130	30	0
1	B	3221	0	3130	29	0
2	A	43	0	30	3	0
2	B	43	0	30	2	0
3	A	17	0	15	2	0
3	B	17	0	15	1	0
4	A	23	0	16	2	0
4	B	23	0	16	5	0
5	A	4	0	3	0	0
5	B	4	0	3	0	0
6	A	12	0	14	1	0

*Continued on next page...*

*Continued from previous page...*

Mol	Chain	Non-H	H(model)	H(added)	Clashes	Symm-Clashes
6	B	12	0	14	0	0
7	A	6	0	8	2	0
7	B	6	0	8	4	0
8	A	1	0	0	0	0
9	A	287	0	0	3	0
9	B	212	0	0	2	0
All	All	7162	0	6432	63	0

The all-atom clashscore is defined as the number of clashes found per 1000 atoms (including hydrogen atoms). The all-atom clashscore for this structure is 5.

The worst 5 of 63 close contacts within the same asymmetric unit are listed below, sorted by their clash magnitude.

Atom-1	Atom-2	Interatomic distance (Å)	Clash overlap (Å)
1:B:281:TRP:HB2	1:B:304:LEU:HD21	1.77	0.67
4:B:800:OLW:H5'	7:B:880:GOL:H32	1.78	0.65
3:A:600:H4B:O4	7:A:880:GOL:O2	2.14	0.65
1:A:72:ARG:NH1	1:A:83:TYR:OH	2.31	0.64
1:A:106:VAL:HG12	1:A:107:LEU:HD12	1.82	0.62

There are no symmetry-related clashes.

## 5.3 Torsion angles [i](#)

### 5.3.1 Protein backbone [i](#)

In the following table, the Percentiles column shows the percent Ramachandran outliers of the chain as a percentile score with respect to all X-ray entries followed by that with respect to entries of similar resolution.

The Analysed column shows the number of residues for which the backbone conformation was analysed, and the total number of residues.

Mol	Chain	Analysed	Favoured	Allowed	Outliers	Percentiles	
1	A	401/443 (90%)	392 (98%)	9 (2%)	0	100	100
1	B	399/443 (90%)	391 (98%)	8 (2%)	0	100	100
All	All	800/886 (90%)	783 (98%)	17 (2%)	0	100	100

There are no Ramachandran outliers to report.

### 5.3.2 Protein sidechains ⓘ

In the following table, the Percentiles column shows the percent sidechain outliers of the chain as a percentile score with respect to all X-ray entries followed by that with respect to entries of similar resolution.

The Analysed column shows the number of residues for which the sidechain conformation was analysed, and the total number of residues.

Mol	Chain	Analysed	Rotameric	Outliers	Percentiles	
1	A	344/375 (92%)	336 (98%)	8 (2%)	45	49
1	B	343/375 (92%)	332 (97%)	11 (3%)	34	35
All	All	687/750 (92%)	668 (97%)	19 (3%)	38	40

5 of 19 residues with a non-rotameric sidechain are listed below:

Mol	Chain	Res	Type
1	B	240	ARG
1	B	331	ARG
1	B	378	LEU
1	B	330	LEU
1	B	69	LYS

Sometimes sidechains can be flipped to improve hydrogen bonding and reduce clashes. There are no such sidechains identified.

### 5.3.3 RNA ⓘ

There are no RNA molecules in this entry.

## 5.4 Non-standard residues in protein, DNA, RNA chains ⓘ

2 non-standard protein/DNA/RNA residues are modelled in this entry.

In the following table, the Counts columns list the number of bonds (or angles) for which Mogul statistics could be retrieved, the number of bonds (or angles) that are observed in the model and the number of bonds (or angles) that are defined in the Chemical Component Dictionary. The Link column lists molecule types, if any, to which the group is linked. The Z score for a bond length (or angle) is the number of standard deviations the observed value is removed from the expected value. A bond length (or angle) with  $|Z| > 2$  is considered an outlier worth inspection. RMSZ is the root-mean-square of all Z scores of the bond lengths (or angles).

Mol	Type	Chain	Res	Link	Bond lengths			Bond angles		
					Counts	RMSZ	$\# Z  > 2$	Counts	RMSZ	$\# Z  > 2$
1	CAS	B	384	1	5,8,9	1.12	0	1,9,11	0.30	0
1	CAS	A	384	1	5,8,9	1.03	0	1,9,11	0.26	0

In the following table, the Chirals column lists the number of chiral outliers, the number of chiral centers analysed, the number of these observed in the model and the number defined in the Chemical Component Dictionary. Similar counts are reported in the Torsion and Rings columns. '-' means no outliers of that kind were identified.

Mol	Type	Chain	Res	Link	Chirals	Torsions	Rings
1	CAS	B	384	1	-	0/0/7/9	-
1	CAS	A	384	1	-	0/0/7/9	-

There are no bond length outliers.

There are no bond angle outliers.

There are no chirality outliers.

There are no torsion outliers.

There are no ring outliers.

No monomer is involved in short contacts.

## 5.5 Carbohydrates [i](#)

There are no oligosaccharides in this entry.

## 5.6 Ligand geometry [i](#)

Of 13 ligands modelled in this entry, 1 is monoatomic - leaving 12 for Mogul analysis.

In the following table, the Counts columns list the number of bonds (or angles) for which Mogul statistics could be retrieved, the number of bonds (or angles) that are observed in the model and the number of bonds (or angles) that are defined in the Chemical Component Dictionary. The Link column lists molecule types, if any, to which the group is linked. The Z score for a bond length (or angle) is the number of standard deviations the observed value is removed from the expected value. A bond length (or angle) with  $|Z| > 2$  is considered an outlier worth inspection. RMSZ is the root-mean-square of all Z scores of the bond lengths (or angles).

Mol	Type	Chain	Res	Link	Bond lengths			Bond angles		
					Counts	RMSZ	$\# Z  > 2$	Counts	RMSZ	$\# Z  > 2$
3	H4B	A	600	-	16,18,18	1.00	0	11,26,26	2.62	6 (54%)
5	ACT	A	860	-	3,3,3	0.72	0	3,3,3	0.83	0

Mol	Type	Chain	Res	Link	Bond lengths			Bond angles		
					Counts	RMSZ	# Z  > 2	Counts	RMSZ	# Z  > 2
5	ACT	B	860	-	3,3,3	0.78	0	3,3,3	0.76	0
3	H4B	B	600	-	16,18,18	0.96	0	11,26,26	2.56	6 (54%)
2	HEM	B	500	1,4	41,50,50	1.84	4 (9%)	45,82,82	1.94	11 (24%)
2	HEM	A	500	1,4	41,50,50	1.91	5 (12%)	45,82,82	1.62	7 (15%)
4	OLW	B	800	2	24,25,25	1.85	5 (20%)	29,32,32	2.52	12 (41%)
6	MTL	A	870	-	11,11,11	0.40	0	14,14,14	0.70	0
7	GOL	B	880	-	5,5,5	0.32	0	5,5,5	0.40	0
7	GOL	A	880	-	5,5,5	0.35	0	5,5,5	0.54	0
4	OLW	A	800	2	24,25,25	1.92	5 (20%)	29,32,32	2.39	9 (31%)
6	MTL	B	870	-	11,11,11	0.44	0	14,14,14	0.62	0

In the following table, the Chirals column lists the number of chiral outliers, the number of chiral centers analysed, the number of these observed in the model and the number defined in the Chemical Component Dictionary. Similar counts are reported in the Torsion and Rings columns. '-' means no outliers of that kind were identified.

Mol	Type	Chain	Res	Link	Chirals	Torsions	Rings
3	H4B	A	600	-	-	0/8/17/17	0/2/2/2
3	H4B	B	600	-	-	0/8/17/17	0/2/2/2
2	HEM	B	500	1,4	-	1/12/54/54	-
2	HEM	A	500	1,4	-	1/12/54/54	-
4	OLW	B	800	2	-	0/9/13/13	0/3/3/3
6	MTL	A	870	-	-	3/16/16/16	-
7	GOL	B	880	-	-	1/4/4/4	-
7	GOL	A	880	-	-	2/4/4/4	-
4	OLW	A	800	2	-	0/9/13/13	0/3/3/3
6	MTL	B	870	-	-	2/16/16/16	-

The worst 5 of 19 bond length outliers are listed below:

Mol	Chain	Res	Type	Atoms	Z	Observed(Å)	Ideal(Å)
2	A	500	HEM	C3D-C2D	7.83	1.53	1.36
2	B	500	HEM	C3D-C2D	7.66	1.53	1.36
4	B	800	OLW	C3'-C7'	-6.76	1.29	1.44
4	A	800	OLW	C3'-C7'	-6.58	1.29	1.44
2	B	500	HEM	C3C-CAC	3.91	1.55	1.47

The worst 5 of 51 bond angle outliers are listed below:

Mol	Chain	Res	Type	Atoms	Z	Observed(°)	Ideal(°)
2	B	500	HEM	C4D-ND-C1D	6.14	111.42	105.07
2	A	500	HEM	C4D-ND-C1D	5.87	111.14	105.07
3	B	600	H4B	C8A-C4A-C4	5.76	119.68	114.57
4	A	800	OLW	C16-N11-C12	5.64	121.52	114.04
4	B	800	OLW	C16-N11-C12	5.33	121.10	114.04

There are no chirality outliers.

5 of 10 torsion outliers are listed below:

Mol	Chain	Res	Type	Atoms
7	A	880	GOL	C1-C2-C3-O3
7	A	880	GOL	O2-C2-C3-O3
6	A	870	MTL	O5-C5-C6-O6
6	A	870	MTL	C4-C5-C6-O6
6	A	870	MTL	O1-C1-C2-O2

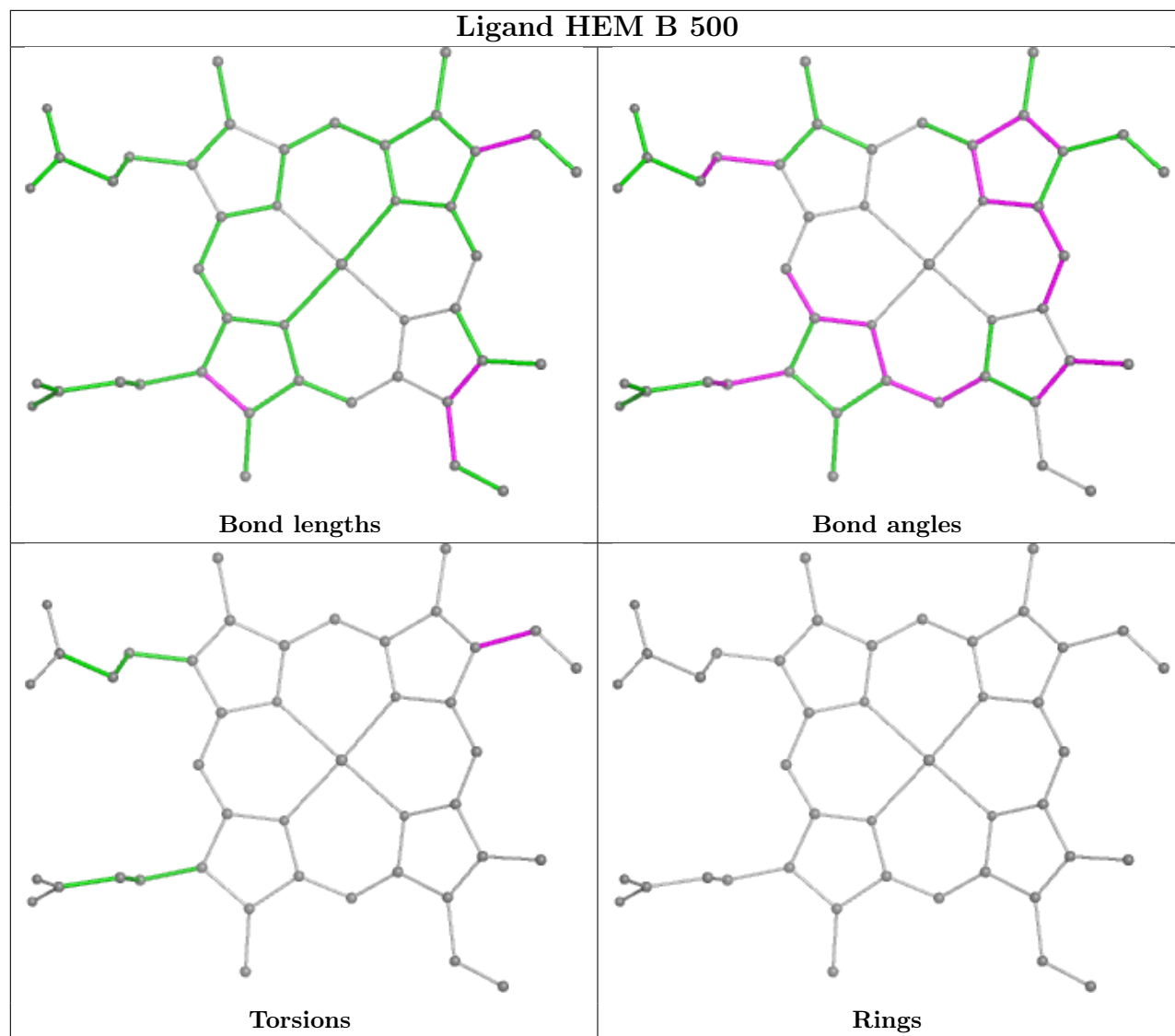
There are no ring outliers.

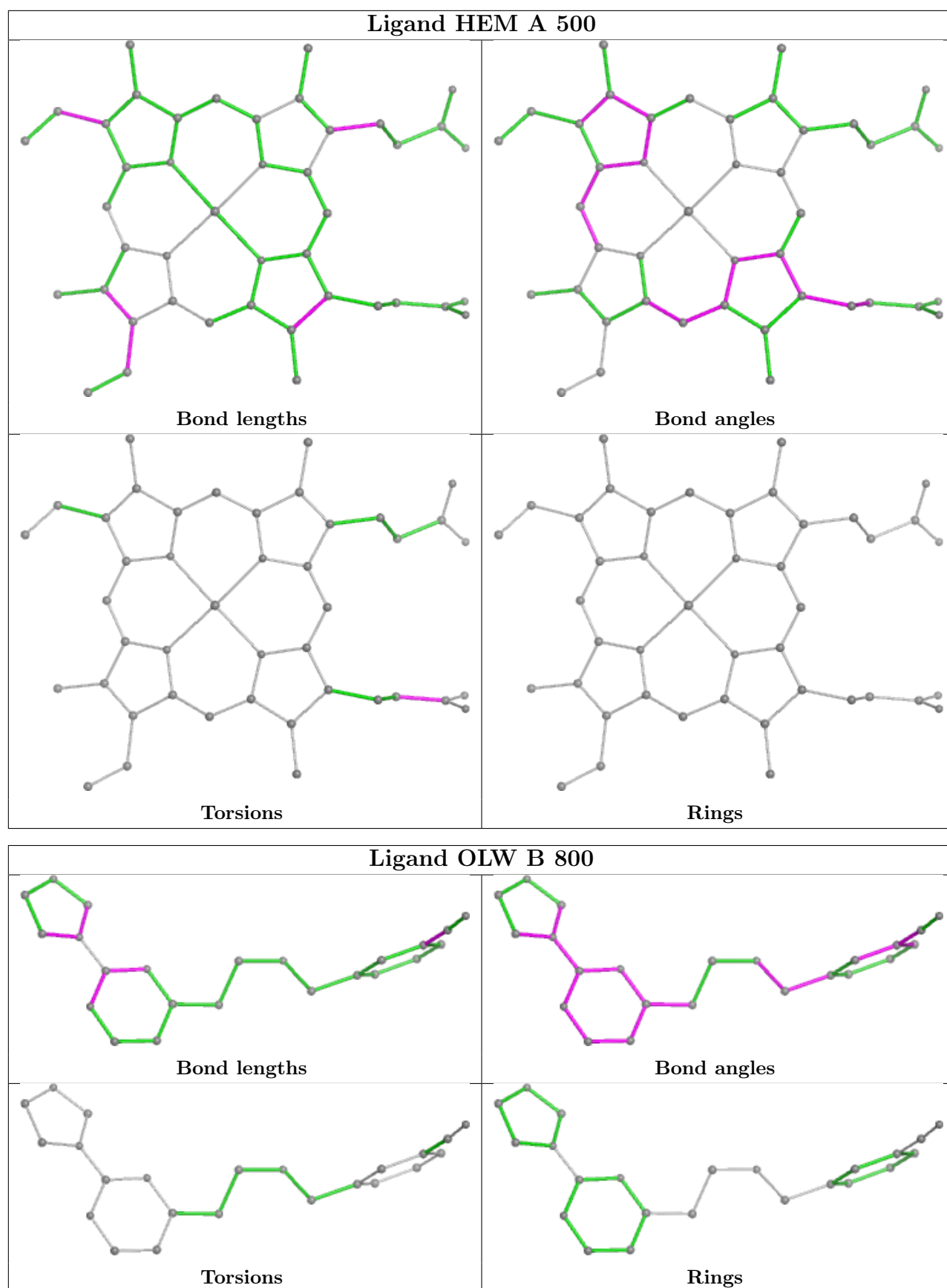
9 monomers are involved in 16 short contacts:

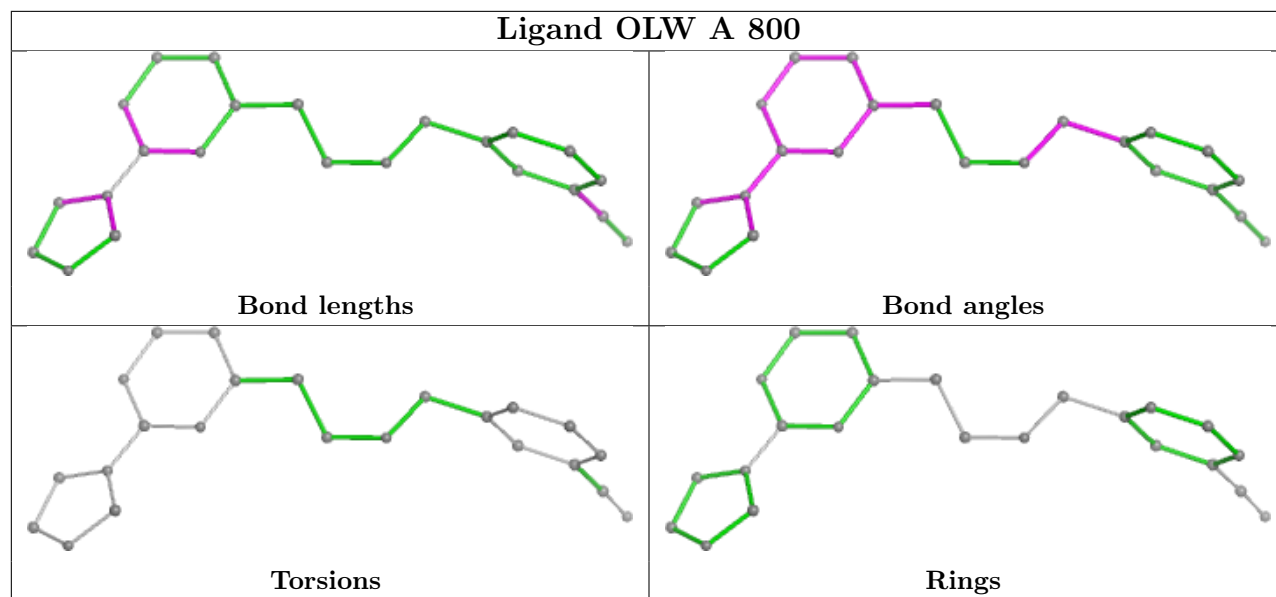
Mol	Chain	Res	Type	Clashes	Symm-Clashes
3	A	600	H4B	2	0
3	B	600	H4B	1	0
2	B	500	HEM	2	0
2	A	500	HEM	3	0
4	B	800	OLW	5	0
6	A	870	MTL	1	0
7	B	880	GOL	4	0
7	A	880	GOL	2	0
4	A	800	OLW	2	0

The following is a two-dimensional graphical depiction of Mogul quality analysis of bond lengths, bond angles, torsion angles, and ring geometry for all instances of the Ligand of Interest. In addition, ligands with molecular weight > 250 and outliers as shown on the validation Tables will also be included. For torsion angles, if less than 5% of the Mogul distribution of torsion angles is within 10 degrees of the torsion angle in question, then that torsion angle is considered an outlier. Any bond that is central to one or more torsion angles identified as an outlier by Mogul will be highlighted in the graph. For rings, the root-mean-square deviation (RMSD) between the ring in question and similar rings identified by Mogul is calculated over all ring torsion angles. If the average RMSD is greater than 60 degrees and the minimal RMSD between the ring in question and any Mogul-identified rings is also greater than 60 degrees, then that ring is considered an outlier. The outliers are highlighted in purple. The color gray indicates Mogul did not find sufficient equivalents in the CSD to analyse the geometry.









## 5.7 Other polymers [i](#)

There are no such residues in this entry.

## 5.8 Polymer linkage issues [i](#)

There are no chain breaks in this entry.

## 6 Fit of model and data [i](#)

### 6.1 Protein, DNA and RNA chains [i](#)

In the following table, the column labelled ‘#RSRZ> 2’ contains the number (and percentage) of RSRZ outliers, followed by percent RSRZ outliers for the chain as percentile scores relative to all X-ray entries and entries of similar resolution. The OWAB column contains the minimum, median, 95<sup>th</sup> percentile and maximum values of the occupancy-weighted average B-factor per residue. The column labelled ‘Q< 0.9’ lists the number of (and percentage) of residues with an average occupancy less than 0.9.

Mol	Chain	Analysed	<RSRZ>	#RSRZ>2		OWAB(Å <sup>2</sup> )	Q<0.9
1	A	404/443 (91%)	-0.58	0	100   100	17, 37, 67, 95	1 (0%)
1	B	403/443 (90%)	-0.48	2 (0%)	87   86	26, 39, 67, 102	0
All	All	807/886 (91%)	-0.53	2 (0%)	92   91	17, 38, 67, 102	1 (0%)

All (2) RSRZ outliers are listed below:

Mol	Chain	Res	Type	RSRZ
1	B	69	LYS	2.5
1	B	121	PRO	2.1

### 6.2 Non-standard residues in protein, DNA, RNA chains [i](#)

In the following table, the Atoms column lists the number of modelled atoms in the group and the number defined in the chemical component dictionary. The B-factors column lists the minimum, median, 95<sup>th</sup> percentile and maximum values of B factors of atoms in the group. The column labelled ‘Q< 0.9’ lists the number of atoms with occupancy less than 0.9.

Mol	Type	Chain	Res	Atoms	RSCC	RSR	B-factors(Å <sup>2</sup> )	Q<0.9
1	CAS	B	384	9/10	0.93	0.11	44,49,85,90	0
1	CAS	A	384	9/10	0.95	0.09	30,37,80,87	0

### 6.3 Carbohydrates [i](#)

There are no monosaccharides in this entry.

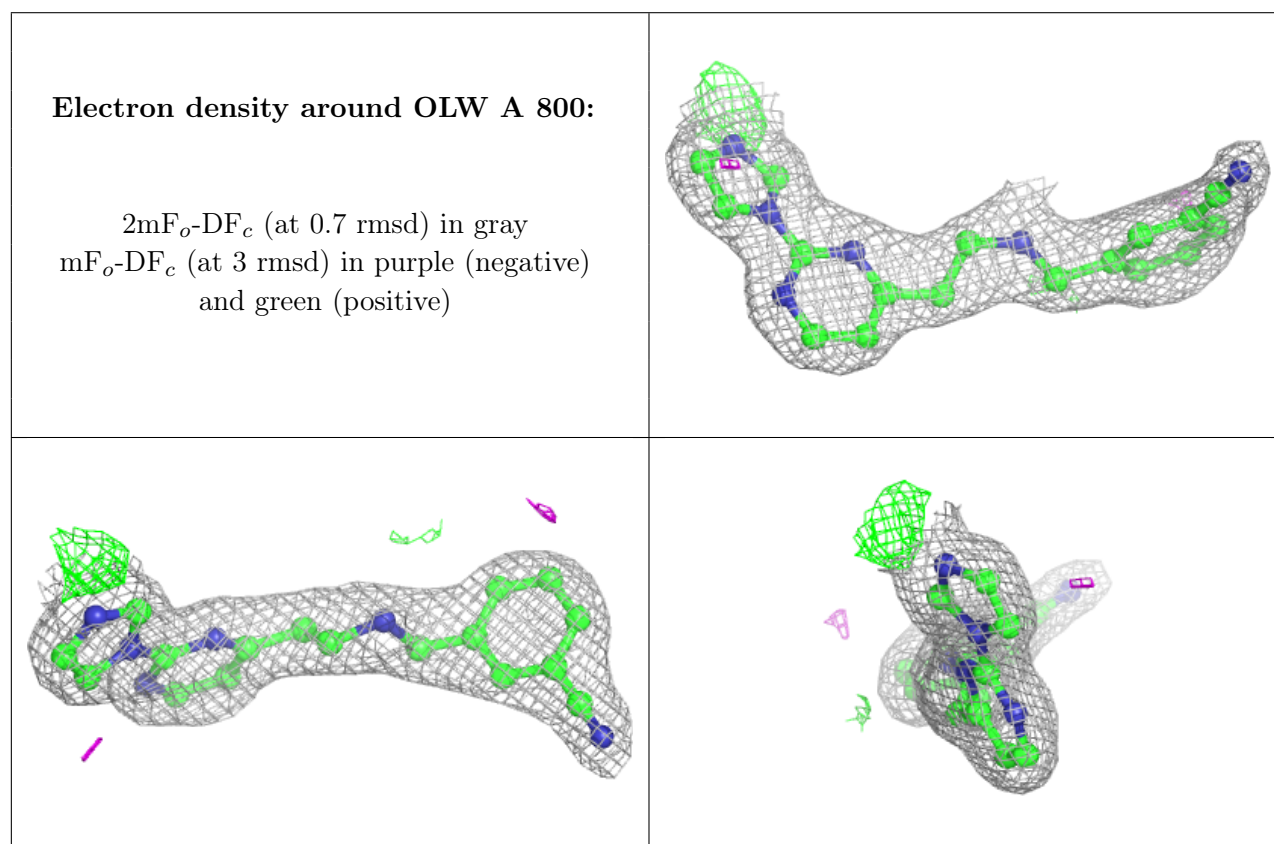
### 6.4 Ligands [i](#)

In the following table, the Atoms column lists the number of modelled atoms in the group and the number defined in the chemical component dictionary. The B-factors column lists the minimum,

median, 95<sup>th</sup> percentile and maximum values of B factors of atoms in the group. The column labelled 'Q< 0.9' lists the number of atoms with occupancy less than 0.9.

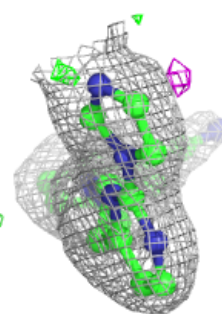
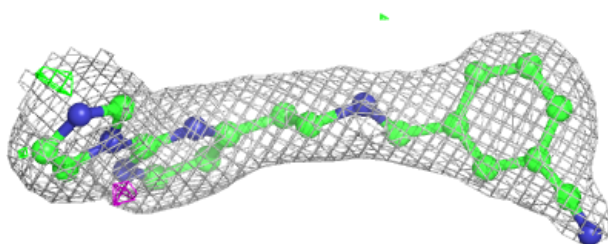
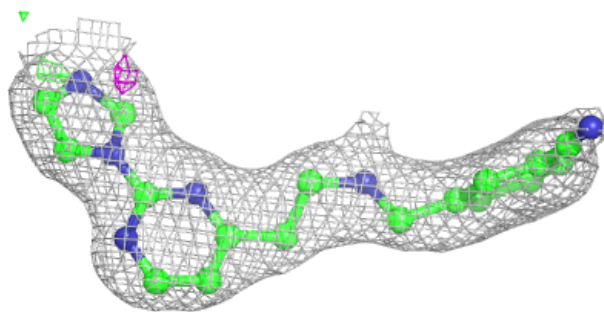
Mol	Type	Chain	Res	Atoms	RSCC	RSR	B-factors( $\text{\AA}^2$ )	Q<0.9
6	MTL	A	870	12/12	0.85	0.11	35,54,65,65	0
7	GOL	A	880	6/6	0.90	0.14	66,68,75,78	0
6	MTL	B	870	12/12	0.91	0.09	38,49,52,52	0
7	GOL	B	880	6/6	0.93	0.09	51,55,57,61	0
3	H4B	B	600	17/17	0.94	0.07	33,39,42,44	0
3	H4B	A	600	17/17	0.95	0.07	31,36,44,49	0
5	ACT	B	860	4/4	0.96	0.10	59,60,62,63	0
5	ACT	A	860	4/4	0.97	0.08	39,48,51,57	0
4	OLW	A	800	23/23	0.97	0.06	28,34,52,60	0
4	OLW	B	800	23/23	0.97	0.07	23,34,50,60	0
2	HEM	A	500	43/43	0.98	0.06	21,29,41,47	0
2	HEM	B	500	43/43	0.99	0.05	21,30,47,64	0
8	ZN	A	1483	1/1	1.00	0.03	39,39,39,39	0

The following is a graphical depiction of the model fit to experimental electron density of all instances of the Ligand of Interest. In addition, ligands with molecular weight > 250 and outliers as shown on the geometry validation Tables will also be included. Each fit is shown from different orientation to approximate a three-dimensional view.



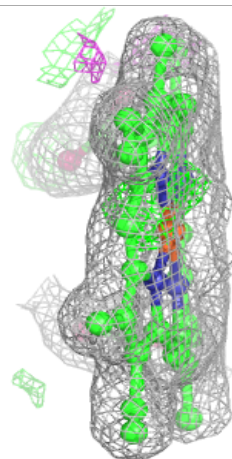
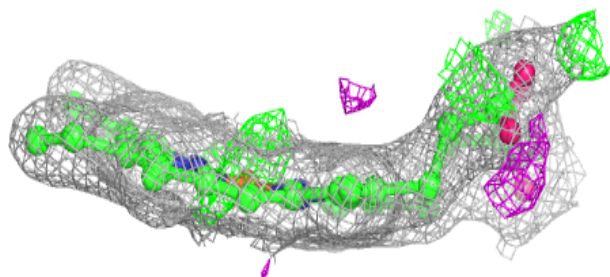
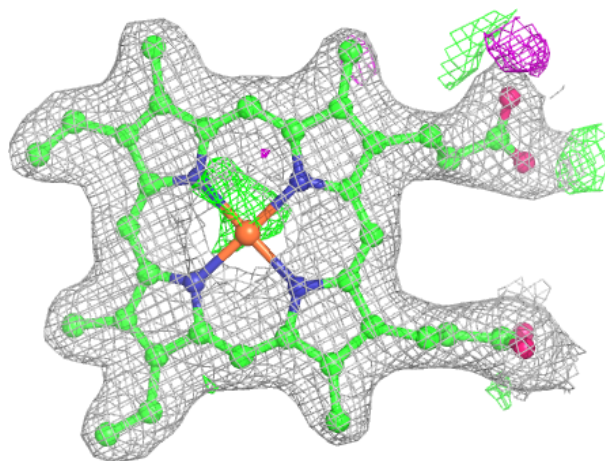
**Electron density around OLW B 800:**

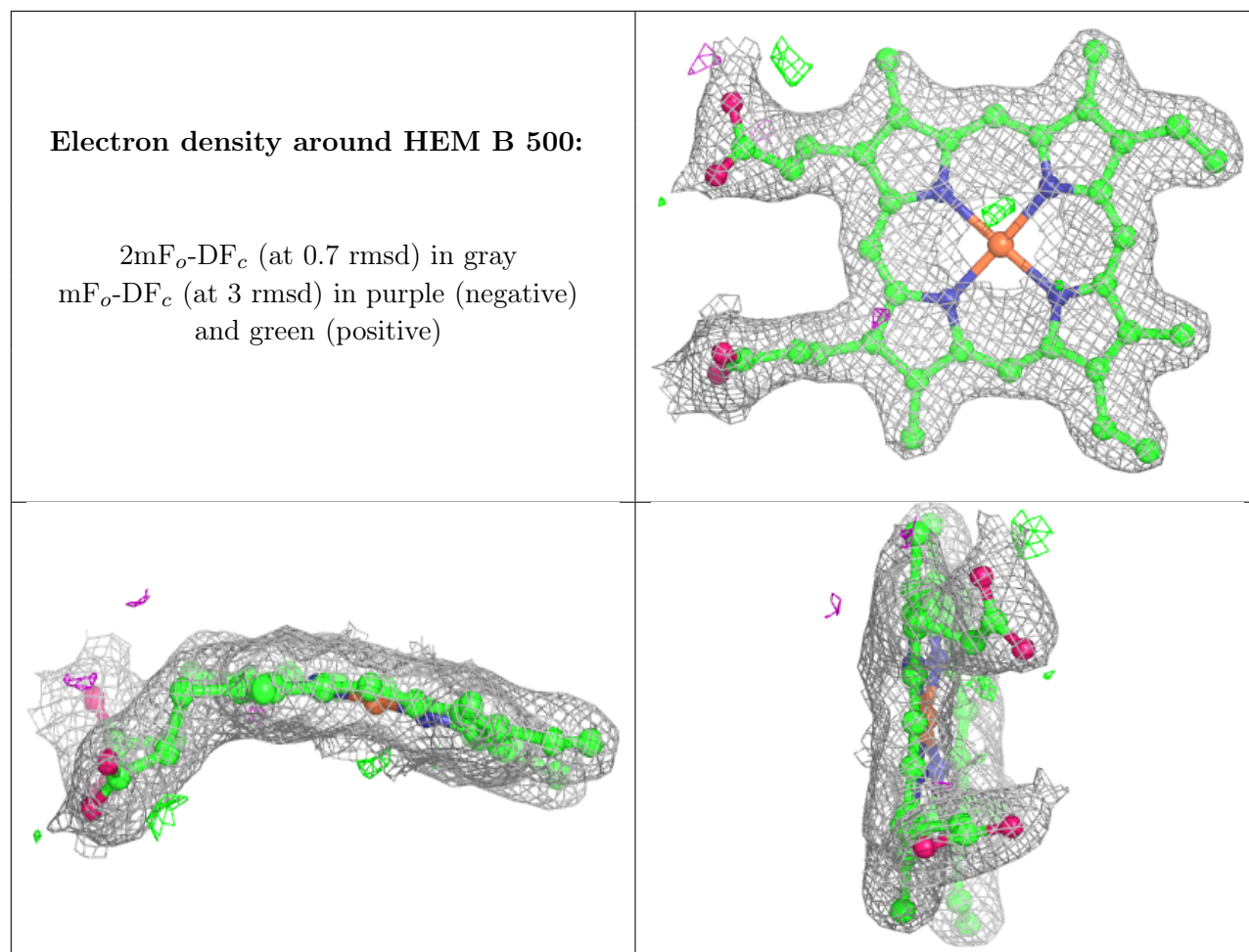
$2mF_o-DF_c$  (at 0.7 rmsd) in gray  
 $mF_o-DF_c$  (at 3 rmsd) in purple (negative)  
and green (positive)



**Electron density around HEM A 500:**

$2mF_o-DF_c$  (at 0.7 rmsd) in gray  
 $mF_o-DF_c$  (at 3 rmsd) in purple (negative)  
and green (positive)





## 6.5 Other polymers [i](#)

There are no such residues in this entry.