



Full wwPDB EM Validation Report ⓘ

Oct 14, 2024 – 08:38 AM EDT

PDB ID : 8D0Z
EMDB ID : EMD-27113
Title : S728-1157 IgG in complex with SARS-CoV-2-6P-Mut7 Spike protein (focused refinement)
Authors : Ozorowski, G.; Torres, J.L.; Ward, A.B.
Deposited on : 2022-05-26
Resolution : 3.70 Å(reported)

This is a Full wwPDB EM Validation Report for a publicly released PDB entry.

We welcome your comments at validation@mail.wwpdb.org

A user guide is available at

<https://www.wwpdb.org/validation/2017/EMValidationReportHelp>
with specific help available everywhere you see the ⓘ symbol.

The types of validation reports are described at

<http://www.wwpdb.org/validation/2017/FAQs#types>.

The following versions of software and data (see [references ⓘ](#)) were used in the production of this report:

EMDB validation analysis : 0.0.1.dev113
Mogul : 2022.3.0, CSD as543be (2022)
MolProbity : 4.02b-467
Percentile statistics : 20231227.v01 (using entries in the PDB archive December 27th 2023)
MapQ : 1.9.13
Ideal geometry (proteins) : Engh & Huber (2001)
Ideal geometry (DNA, RNA) : Parkinson et al. (1996)
Validation Pipeline (wwPDB-VP) : 2.39

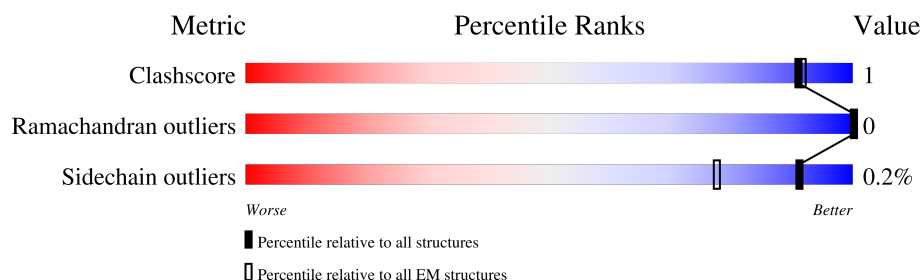
1 Overall quality at a glance

The following experimental techniques were used to determine the structure:

ELECTRON MICROSCOPY

The reported resolution of this entry is 3.70 Å.

Percentile scores (ranging between 0-100) for global validation metrics of the entry are shown in the following graphic. The table shows the number of entries on which the scores are based.



Metric	Whole archive (#Entries)	EM structures (#Entries)
Clashscore	210492	15764
Ramachandran outliers	207382	16835
Sidechain outliers	206894	16415

The table below summarises the geometric issues observed across the polymeric chains and their fit to the map. The red, orange, yellow and green segments of the bar indicate the fraction of residues that contain outliers for ≥ 3 , 2, 1 and 0 types of geometric quality criteria respectively. A grey segment represents the fraction of residues that are not modelled. The numeric value for each fraction is indicated below the corresponding segment, with a dot representing fractions $\leq 5\%$. The upper red bar (where present) indicates the fraction of residues that have poor fit to the EM map (all-atom inclusion $< 40\%$). The numeric value is given above the bar.

Mol	Chain	Length	Quality of chain
1	A	1280	
1	B	1280	
1	C	1280	
2	H	118	
3	L	104	

2 Entry composition

There are 4 unique types of molecules in this entry. The entry contains 22566 atoms, of which 0 are hydrogens and 0 are deuteriums.

In the tables below, the AltConf column contains the number of residues with at least one atom in alternate conformation and the Trace column contains the number of residues modelled with at most 2 atoms.

- Molecule 1 is a protein called Spike glycoprotein.

Mol	Chain	Residues	Atoms					AltConf	Trace
1	C	824	Total	C	N	O	S	0	0
			6425	4094	1067	1233	31		
1	A	1015	Total	C	N	O	S	0	0
			7939	5068	1321	1512	38		
1	B	820	Total	C	N	O	S	0	0
			6395	4078	1062	1226	29		

There are 249 discrepancies between the modelled and reference sequences:

Chain	Residue	Modelled	Actual	Comment	Reference
C	682	GLY	ARG	engineered mutation	UNP P0DTC2
C	683	SER	ARG	engineered mutation	UNP P0DTC2
C	685	SER	ARG	engineered mutation	UNP P0DTC2
C	705	CYS	VAL	engineered mutation	UNP P0DTC2
C	817	PRO	PHE	engineered mutation	UNP P0DTC2
C	883	CYS	THR	engineered mutation	UNP P0DTC2
C	892	PRO	ALA	engineered mutation	UNP P0DTC2
C	899	PRO	ALA	engineered mutation	UNP P0DTC2
C	942	PRO	ALA	engineered mutation	UNP P0DTC2
C	986	PRO	LYS	engineered mutation	UNP P0DTC2
C	987	PRO	VAL	engineered mutation	UNP P0DTC2
C	1209	GLY	-	expression tag	UNP P0DTC2
C	1210	SER	-	expression tag	UNP P0DTC2
C	1211	GLY	-	expression tag	UNP P0DTC2
C	1212	TYR	-	expression tag	UNP P0DTC2
C	1213	ILE	-	expression tag	UNP P0DTC2
C	1214	PRO	-	expression tag	UNP P0DTC2
C	1215	GLU	-	expression tag	UNP P0DTC2
C	1216	ALA	-	expression tag	UNP P0DTC2
C	1217	PRO	-	expression tag	UNP P0DTC2
C	1218	ARG	-	expression tag	UNP P0DTC2
C	1219	ASP	-	expression tag	UNP P0DTC2
C	1220	GLY	-	expression tag	UNP P0DTC2
C	1221	GLN	-	expression tag	UNP P0DTC2

Continued on next page...

Continued from previous page...

Chain	Residue	Modelled	Actual	Comment	Reference
C	1222	ALA	-	expression tag	UNP P0DTC2
C	1223	TYR	-	expression tag	UNP P0DTC2
C	1224	VAL	-	expression tag	UNP P0DTC2
C	1225	ARG	-	expression tag	UNP P0DTC2
C	1226	LYS	-	expression tag	UNP P0DTC2
C	1227	ASP	-	expression tag	UNP P0DTC2
C	1228	GLY	-	expression tag	UNP P0DTC2
C	1229	GLU	-	expression tag	UNP P0DTC2
C	1230	TRP	-	expression tag	UNP P0DTC2
C	1231	VAL	-	expression tag	UNP P0DTC2
C	1232	LEU	-	expression tag	UNP P0DTC2
C	1233	LEU	-	expression tag	UNP P0DTC2
C	1234	SER	-	expression tag	UNP P0DTC2
C	1235	THR	-	expression tag	UNP P0DTC2
C	1236	PHE	-	expression tag	UNP P0DTC2
C	1237	LEU	-	expression tag	UNP P0DTC2
C	1238	GLY	-	expression tag	UNP P0DTC2
C	1239	ARG	-	expression tag	UNP P0DTC2
C	1240	SER	-	expression tag	UNP P0DTC2
C	1241	LEU	-	expression tag	UNP P0DTC2
C	1242	GLU	-	expression tag	UNP P0DTC2
C	1243	VAL	-	expression tag	UNP P0DTC2
C	1244	LEU	-	expression tag	UNP P0DTC2
C	1245	PHE	-	expression tag	UNP P0DTC2
C	1246	GLN	-	expression tag	UNP P0DTC2
C	1247	GLY	-	expression tag	UNP P0DTC2
C	1248	PRO	-	expression tag	UNP P0DTC2
C	1249	GLY	-	expression tag	UNP P0DTC2
C	1250	SER	-	expression tag	UNP P0DTC2
C	1251	ALA	-	expression tag	UNP P0DTC2
C	1252	TRP	-	expression tag	UNP P0DTC2
C	1253	SER	-	expression tag	UNP P0DTC2
C	1254	HIS	-	expression tag	UNP P0DTC2
C	1255	PRO	-	expression tag	UNP P0DTC2
C	1256	GLN	-	expression tag	UNP P0DTC2
C	1257	PHE	-	expression tag	UNP P0DTC2
C	1258	GLU	-	expression tag	UNP P0DTC2
C	1259	LYS	-	expression tag	UNP P0DTC2
C	1260	GLY	-	expression tag	UNP P0DTC2
C	1261	GLY	-	expression tag	UNP P0DTC2
C	1262	GLY	-	expression tag	UNP P0DTC2
C	1263	SER	-	expression tag	UNP P0DTC2

Continued on next page...

Continued from previous page...

Chain	Residue	Modelled	Actual	Comment	Reference
C	1264	GLY	-	expression tag	UNP P0DTC2
C	1265	GLY	-	expression tag	UNP P0DTC2
C	1266	GLY	-	expression tag	UNP P0DTC2
C	1267	GLY	-	expression tag	UNP P0DTC2
C	1268	SER	-	expression tag	UNP P0DTC2
C	1269	GLY	-	expression tag	UNP P0DTC2
C	1270	GLY	-	expression tag	UNP P0DTC2
C	1271	SER	-	expression tag	UNP P0DTC2
C	1272	ALA	-	expression tag	UNP P0DTC2
C	1273	TRP	-	expression tag	UNP P0DTC2
C	1274	SER	-	expression tag	UNP P0DTC2
C	1275	HIS	-	expression tag	UNP P0DTC2
C	1276	PRO	-	expression tag	UNP P0DTC2
C	1277	GLN	-	expression tag	UNP P0DTC2
C	1278	PHE	-	expression tag	UNP P0DTC2
C	1279	GLU	-	expression tag	UNP P0DTC2
C	1280	LYS	-	expression tag	UNP P0DTC2
A	682	GLY	ARG	engineered mutation	UNP P0DTC2
A	683	SER	ARG	engineered mutation	UNP P0DTC2
A	685	SER	ARG	engineered mutation	UNP P0DTC2
A	705	CYS	VAL	engineered mutation	UNP P0DTC2
A	817	PRO	PHE	engineered mutation	UNP P0DTC2
A	883	CYS	THR	engineered mutation	UNP P0DTC2
A	892	PRO	ALA	engineered mutation	UNP P0DTC2
A	899	PRO	ALA	engineered mutation	UNP P0DTC2
A	942	PRO	ALA	engineered mutation	UNP P0DTC2
A	986	PRO	LYS	engineered mutation	UNP P0DTC2
A	987	PRO	VAL	engineered mutation	UNP P0DTC2
A	1209	GLY	-	expression tag	UNP P0DTC2
A	1210	SER	-	expression tag	UNP P0DTC2
A	1211	GLY	-	expression tag	UNP P0DTC2
A	1212	TYR	-	expression tag	UNP P0DTC2
A	1213	ILE	-	expression tag	UNP P0DTC2
A	1214	PRO	-	expression tag	UNP P0DTC2
A	1215	GLU	-	expression tag	UNP P0DTC2
A	1216	ALA	-	expression tag	UNP P0DTC2
A	1217	PRO	-	expression tag	UNP P0DTC2
A	1218	ARG	-	expression tag	UNP P0DTC2
A	1219	ASP	-	expression tag	UNP P0DTC2
A	1220	GLY	-	expression tag	UNP P0DTC2
A	1221	GLN	-	expression tag	UNP P0DTC2
A	1222	ALA	-	expression tag	UNP P0DTC2

Continued on next page...

Continued from previous page...

Chain	Residue	Modelled	Actual	Comment	Reference
A	1223	TYR	-	expression tag	UNP P0DTC2
A	1224	VAL	-	expression tag	UNP P0DTC2
A	1225	ARG	-	expression tag	UNP P0DTC2
A	1226	LYS	-	expression tag	UNP P0DTC2
A	1227	ASP	-	expression tag	UNP P0DTC2
A	1228	GLY	-	expression tag	UNP P0DTC2
A	1229	GLU	-	expression tag	UNP P0DTC2
A	1230	TRP	-	expression tag	UNP P0DTC2
A	1231	VAL	-	expression tag	UNP P0DTC2
A	1232	LEU	-	expression tag	UNP P0DTC2
A	1233	LEU	-	expression tag	UNP P0DTC2
A	1234	SER	-	expression tag	UNP P0DTC2
A	1235	THR	-	expression tag	UNP P0DTC2
A	1236	PHE	-	expression tag	UNP P0DTC2
A	1237	LEU	-	expression tag	UNP P0DTC2
A	1238	GLY	-	expression tag	UNP P0DTC2
A	1239	ARG	-	expression tag	UNP P0DTC2
A	1240	SER	-	expression tag	UNP P0DTC2
A	1241	LEU	-	expression tag	UNP P0DTC2
A	1242	GLU	-	expression tag	UNP P0DTC2
A	1243	VAL	-	expression tag	UNP P0DTC2
A	1244	LEU	-	expression tag	UNP P0DTC2
A	1245	PHE	-	expression tag	UNP P0DTC2
A	1246	GLN	-	expression tag	UNP P0DTC2
A	1247	GLY	-	expression tag	UNP P0DTC2
A	1248	PRO	-	expression tag	UNP P0DTC2
A	1249	GLY	-	expression tag	UNP P0DTC2
A	1250	SER	-	expression tag	UNP P0DTC2
A	1251	ALA	-	expression tag	UNP P0DTC2
A	1252	TRP	-	expression tag	UNP P0DTC2
A	1253	SER	-	expression tag	UNP P0DTC2
A	1254	HIS	-	expression tag	UNP P0DTC2
A	1255	PRO	-	expression tag	UNP P0DTC2
A	1256	GLN	-	expression tag	UNP P0DTC2
A	1257	PHE	-	expression tag	UNP P0DTC2
A	1258	GLU	-	expression tag	UNP P0DTC2
A	1259	LYS	-	expression tag	UNP P0DTC2
A	1260	GLY	-	expression tag	UNP P0DTC2
A	1261	GLY	-	expression tag	UNP P0DTC2
A	1262	GLY	-	expression tag	UNP P0DTC2
A	1263	SER	-	expression tag	UNP P0DTC2
A	1264	GLY	-	expression tag	UNP P0DTC2

Continued on next page...

Continued from previous page...

Chain	Residue	Modelled	Actual	Comment	Reference
A	1265	GLY	-	expression tag	UNP P0DTC2
A	1266	GLY	-	expression tag	UNP P0DTC2
A	1267	GLY	-	expression tag	UNP P0DTC2
A	1268	SER	-	expression tag	UNP P0DTC2
A	1269	GLY	-	expression tag	UNP P0DTC2
A	1270	GLY	-	expression tag	UNP P0DTC2
A	1271	SER	-	expression tag	UNP P0DTC2
A	1272	ALA	-	expression tag	UNP P0DTC2
A	1273	TRP	-	expression tag	UNP P0DTC2
A	1274	SER	-	expression tag	UNP P0DTC2
A	1275	HIS	-	expression tag	UNP P0DTC2
A	1276	PRO	-	expression tag	UNP P0DTC2
A	1277	GLN	-	expression tag	UNP P0DTC2
A	1278	PHE	-	expression tag	UNP P0DTC2
A	1279	GLU	-	expression tag	UNP P0DTC2
A	1280	LYS	-	expression tag	UNP P0DTC2
B	682	GLY	ARG	engineered mutation	UNP P0DTC2
B	683	SER	ARG	engineered mutation	UNP P0DTC2
B	685	SER	ARG	engineered mutation	UNP P0DTC2
B	705	CYS	VAL	engineered mutation	UNP P0DTC2
B	817	PRO	PHE	engineered mutation	UNP P0DTC2
B	883	CYS	THR	engineered mutation	UNP P0DTC2
B	892	PRO	ALA	engineered mutation	UNP P0DTC2
B	899	PRO	ALA	engineered mutation	UNP P0DTC2
B	942	PRO	ALA	engineered mutation	UNP P0DTC2
B	986	PRO	LYS	engineered mutation	UNP P0DTC2
B	987	PRO	VAL	engineered mutation	UNP P0DTC2
B	1209	GLY	-	expression tag	UNP P0DTC2
B	1210	SER	-	expression tag	UNP P0DTC2
B	1211	GLY	-	expression tag	UNP P0DTC2
B	1212	TYR	-	expression tag	UNP P0DTC2
B	1213	ILE	-	expression tag	UNP P0DTC2
B	1214	PRO	-	expression tag	UNP P0DTC2
B	1215	GLU	-	expression tag	UNP P0DTC2
B	1216	ALA	-	expression tag	UNP P0DTC2
B	1217	PRO	-	expression tag	UNP P0DTC2
B	1218	ARG	-	expression tag	UNP P0DTC2
B	1219	ASP	-	expression tag	UNP P0DTC2
B	1220	GLY	-	expression tag	UNP P0DTC2
B	1221	GLN	-	expression tag	UNP P0DTC2
B	1222	ALA	-	expression tag	UNP P0DTC2
B	1223	TYR	-	expression tag	UNP P0DTC2

Continued on next page...

Continued from previous page...

Chain	Residue	Modelled	Actual	Comment	Reference
B	1224	VAL	-	expression tag	UNP P0DTC2
B	1225	ARG	-	expression tag	UNP P0DTC2
B	1226	LYS	-	expression tag	UNP P0DTC2
B	1227	ASP	-	expression tag	UNP P0DTC2
B	1228	GLY	-	expression tag	UNP P0DTC2
B	1229	GLU	-	expression tag	UNP P0DTC2
B	1230	TRP	-	expression tag	UNP P0DTC2
B	1231	VAL	-	expression tag	UNP P0DTC2
B	1232	LEU	-	expression tag	UNP P0DTC2
B	1233	LEU	-	expression tag	UNP P0DTC2
B	1234	SER	-	expression tag	UNP P0DTC2
B	1235	THR	-	expression tag	UNP P0DTC2
B	1236	PHE	-	expression tag	UNP P0DTC2
B	1237	LEU	-	expression tag	UNP P0DTC2
B	1238	GLY	-	expression tag	UNP P0DTC2
B	1239	ARG	-	expression tag	UNP P0DTC2
B	1240	SER	-	expression tag	UNP P0DTC2
B	1241	LEU	-	expression tag	UNP P0DTC2
B	1242	GLU	-	expression tag	UNP P0DTC2
B	1243	VAL	-	expression tag	UNP P0DTC2
B	1244	LEU	-	expression tag	UNP P0DTC2
B	1245	PHE	-	expression tag	UNP P0DTC2
B	1246	GLN	-	expression tag	UNP P0DTC2
B	1247	GLY	-	expression tag	UNP P0DTC2
B	1248	PRO	-	expression tag	UNP P0DTC2
B	1249	GLY	-	expression tag	UNP P0DTC2
B	1250	SER	-	expression tag	UNP P0DTC2
B	1251	ALA	-	expression tag	UNP P0DTC2
B	1252	TRP	-	expression tag	UNP P0DTC2
B	1253	SER	-	expression tag	UNP P0DTC2
B	1254	HIS	-	expression tag	UNP P0DTC2
B	1255	PRO	-	expression tag	UNP P0DTC2
B	1256	GLN	-	expression tag	UNP P0DTC2
B	1257	PHE	-	expression tag	UNP P0DTC2
B	1258	GLU	-	expression tag	UNP P0DTC2
B	1259	LYS	-	expression tag	UNP P0DTC2
B	1260	GLY	-	expression tag	UNP P0DTC2
B	1261	GLY	-	expression tag	UNP P0DTC2
B	1262	GLY	-	expression tag	UNP P0DTC2
B	1263	SER	-	expression tag	UNP P0DTC2
B	1264	GLY	-	expression tag	UNP P0DTC2
B	1265	GLY	-	expression tag	UNP P0DTC2

Continued on next page...

Continued from previous page...

Chain	Residue	Modelled	Actual	Comment	Reference
B	1266	GLY	-	expression tag	UNP P0DTC2
B	1267	GLY	-	expression tag	UNP P0DTC2
B	1268	SER	-	expression tag	UNP P0DTC2
B	1269	GLY	-	expression tag	UNP P0DTC2
B	1270	GLY	-	expression tag	UNP P0DTC2
B	1271	SER	-	expression tag	UNP P0DTC2
B	1272	ALA	-	expression tag	UNP P0DTC2
B	1273	TRP	-	expression tag	UNP P0DTC2
B	1274	SER	-	expression tag	UNP P0DTC2
B	1275	HIS	-	expression tag	UNP P0DTC2
B	1276	PRO	-	expression tag	UNP P0DTC2
B	1277	GLN	-	expression tag	UNP P0DTC2
B	1278	PHE	-	expression tag	UNP P0DTC2
B	1279	GLU	-	expression tag	UNP P0DTC2
B	1280	LYS	-	expression tag	UNP P0DTC2

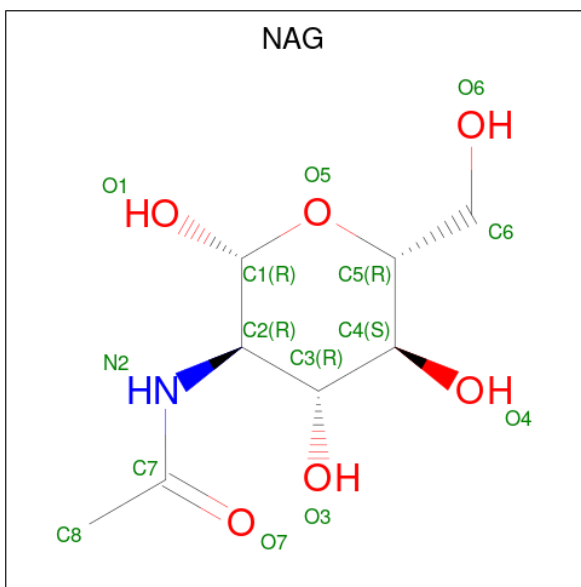
- Molecule 2 is a protein called S728-1157 Fab heavy chain variable region.

Mol	Chain	Residues	Atoms					AltConf	Trace
2	H	117	Total	C	N	O	S	0	0
			890	555	152	178	5		

- Molecule 3 is a protein called S728-1157 Fab light chain variable region.

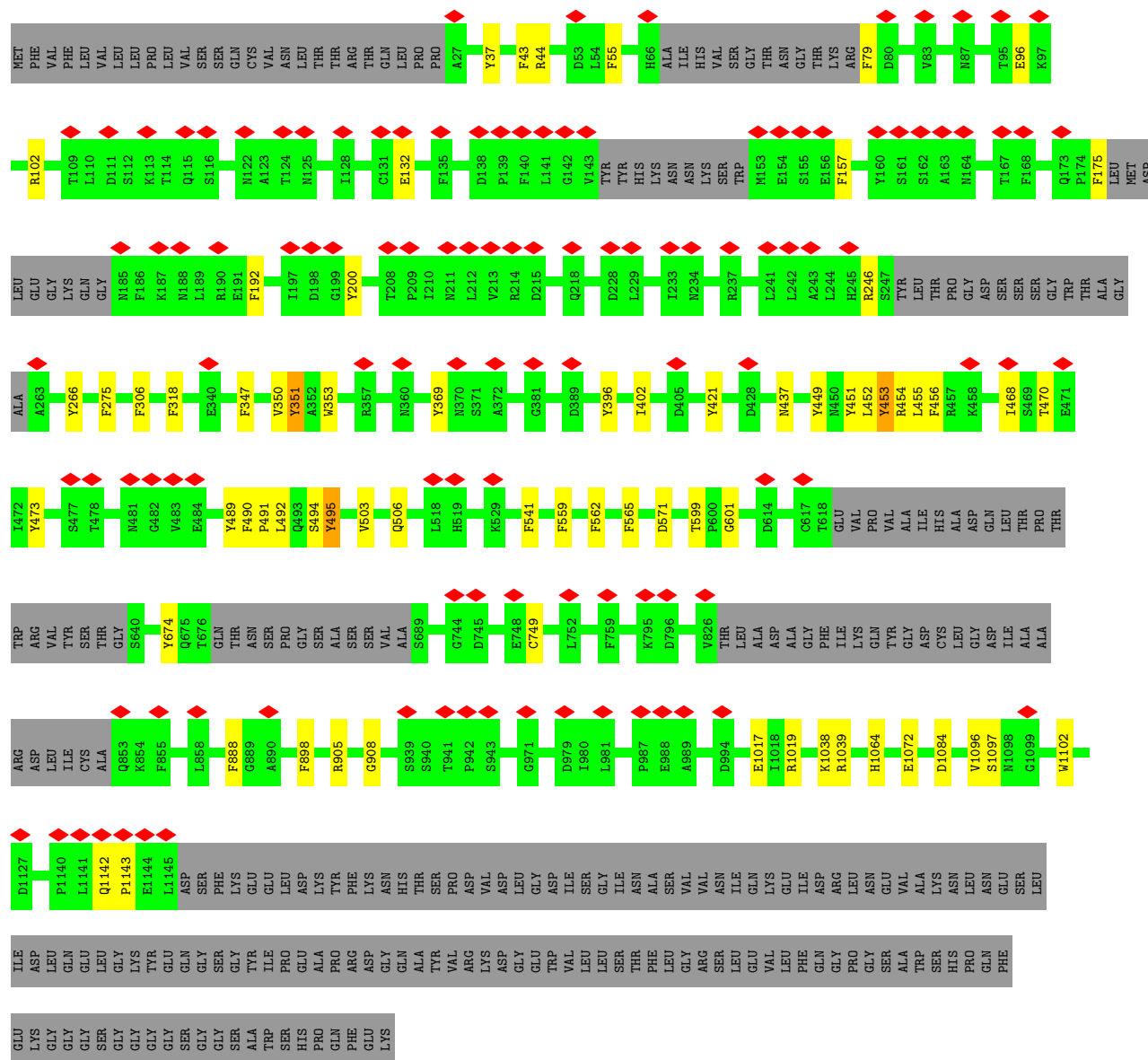
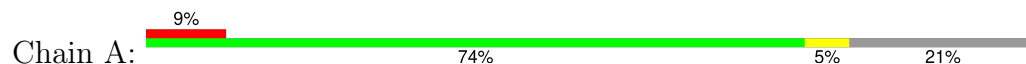
Mol	Chain	Residues	Atoms					AltConf	Trace
3	L	102	Total	C	N	O	S	0	0
			763	468	138	154	3		

- Molecule 4 is 2-acetamido-2-deoxy-beta-D-glucopyranose (three-letter code: NAG) (formula: C₈H₁₅NO₆).

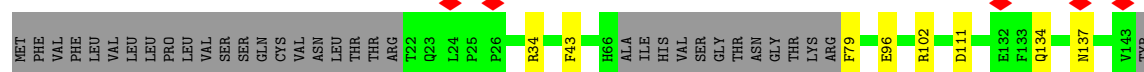


Mol	Chain	Residues	Atoms				AltConf
4	C	1	Total	C	N	O	0
			14	8	1	5	
4	C	1	Total	C	N	O	0
			14	8	1	5	
4	C	1	Total	C	N	O	0
			14	8	1	5	
4	A	1	Total	C	N	O	0
			14	8	1	5	
4	A	1	Total	C	N	O	0
			14	8	1	5	
4	A	1	Total	C	N	O	0
			14	8	1	5	
4	B	1	Total	C	N	O	0
			14	8	1	5	
4	B	1	Total	C	N	O	0
			14	8	1	5	
4	B	1	Total	C	N	O	0
			14	8	1	5	

- Molecule 1: Spike glycoprotein



- Molecule 1: Spike glycoprotein



4 Experimental information

Property	Value	Source
EM reconstruction method	SINGLE PARTICLE	Depositor
Imposed symmetry	POINT, C1	Depositor
Number of particles used	29595	Depositor
Resolution determination method	FSC 0.143 CUT-OFF	Depositor
CTF correction method	PHASE FLIPPING AND AMPLITUDE CORRECTION	Depositor
Microscope	TFS KRIOS	Depositor
Voltage (kV)	300	Depositor
Electron dose ($e^-/\text{\AA}^2$)	50	Depositor
Minimum defocus (nm)	800	Depositor
Maximum defocus (nm)	1500	Depositor
Magnification	130000	Depositor
Image detector	GATAN K2 SUMMIT (4k x 4k)	Depositor
Maximum map value	0.053	Depositor
Minimum map value	-0.023	Depositor
Average map value	0.000	Depositor
Map value standard deviation	0.002	Depositor
Recommended contour level	0.01	Depositor
Map size (Å)	468.15997, 468.15997, 468.15997	wwPDB
Map dimensions	448, 448, 448	wwPDB
Map angles (°)	90.0, 90.0, 90.0	wwPDB
Pixel spacing (Å)	1.045, 1.045, 1.045	Depositor

5 Model quality [i](#)

5.1 Standard geometry [i](#)

Bond lengths and bond angles in the following residue types are not validated in this section: NAG

The Z score for a bond length (or angle) is the number of standard deviations the observed value is removed from the expected value. A bond length (or angle) with $|Z| > 5$ is considered an outlier worth inspection. RMSZ is the root-mean-square of all Z scores of the bond lengths (or angles).

Mol	Chain	Bond lengths		Bond angles	
		RMSZ	# $ Z > 5$	RMSZ	# $ Z > 5$
1	A	1.13	36/8122 (0.4%)	0.93	17/11051 (0.2%)
1	B	1.13	22/6534 (0.3%)	0.94	19/8892 (0.2%)
1	C	1.11	21/6562 (0.3%)	0.92	16/8925 (0.2%)
2	H	1.13	3/906 (0.3%)	1.06	2/1228 (0.2%)
3	L	0.97	2/778 (0.3%)	1.00	1/1057 (0.1%)
All	All	1.12	84/22902 (0.4%)	0.94	55/31153 (0.2%)

All (84) bond length outliers are listed below:

Mol	Chain	Res	Type	Atoms	Z	Observed(Å)	Ideal(Å)
1	A	888	PHE	CB-CG	-12.30	1.30	1.51
1	C	55	PHE	CB-CG	-10.24	1.33	1.51
1	B	888	PHE	CB-CG	-9.16	1.35	1.51
1	A	55	PHE	CB-CG	-8.66	1.36	1.51
1	A	562	PHE	CB-CG	-8.54	1.36	1.51
1	A	175	PHE	CG-CD1	8.37	1.51	1.38
1	A	353	TRP	CB-CG	-7.99	1.35	1.50
1	A	749	CYS	CB-SG	-7.78	1.69	1.82
1	C	28	TYR	CG-CD2	7.76	1.49	1.39
1	C	79	PHE	CG-CD2	7.63	1.50	1.38
1	C	28	TYR	CG-CD1	7.46	1.48	1.39
1	C	28	TYR	CE2-CZ	7.32	1.48	1.38
1	B	79	PHE	CG-CD2	7.26	1.49	1.38
1	B	79	PHE	CG-CD1	7.18	1.49	1.38
1	C	175	PHE	CG-CD2	7.11	1.49	1.38
1	A	79	PHE	CG-CD2	7.06	1.49	1.38
1	A	175	PHE	CG-CD2	6.82	1.49	1.38
1	B	175	PHE	CG-CD2	6.75	1.48	1.38
1	B	671	CYS	CB-SG	-6.74	1.70	1.82
1	A	79	PHE	CG-CD1	6.62	1.48	1.38
1	A	541	PHE	CB-CG	-6.62	1.40	1.51

Continued on next page...

Continued from previous page...

Mol	Chain	Res	Type	Atoms	Z	Observed(Å)	Ideal(Å)
1	C	28	TYR	CE1-CZ	6.61	1.47	1.38
1	B	43	PHE	CB-CG	-6.57	1.40	1.51
1	C	79	PHE	CG-CD1	6.53	1.48	1.38
1	B	1103	PHE	CB-CG	-6.41	1.40	1.51
1	B	1095	PHE	CB-CG	-6.38	1.40	1.51
1	C	565	PHE	CB-CG	-6.38	1.40	1.51
1	A	1064	HIS	CB-CG	-6.35	1.38	1.50
1	A	473	TYR	CB-CG	-6.30	1.42	1.51
1	A	396	TYR	CB-CG	-6.21	1.42	1.51
1	A	898	PHE	CB-CG	-6.06	1.41	1.51
1	C	671	CYS	CB-SG	-5.97	1.72	1.81
2	H	1	GLU	CB-CG	5.79	1.63	1.52
2	H	47	TRP	CD2-CE2	-5.69	1.34	1.41
1	A	306	PHE	CB-CG	-5.69	1.41	1.51
1	B	1144	GLU	CB-CG	5.65	1.62	1.52
1	B	175	PHE	CG-CD1	5.63	1.47	1.38
1	A	266	TYR	CG-CD1	-5.62	1.31	1.39
1	C	175	PHE	CG-CD1	5.61	1.47	1.38
1	C	204	TYR	CB-CG	-5.59	1.43	1.51
1	A	175	PHE	CB-CG	5.58	1.60	1.51
1	A	449	TYR	CB-CG	-5.53	1.43	1.51
1	A	266	TYR	CD1-CE1	-5.52	1.31	1.39
1	A	1072	GLU	CD-OE1	-5.51	1.19	1.25
1	A	43	PHE	CB-CG	-5.49	1.42	1.51
1	C	175	PHE	CE2-CZ	5.48	1.47	1.37
1	A	888	PHE	CD2-CE2	-5.46	1.28	1.39
1	A	266	TYR	CB-CG	-5.46	1.43	1.51
1	B	175	PHE	CE1-CZ	5.46	1.47	1.37
1	C	79	PHE	CE1-CZ	5.45	1.47	1.37
3	L	3	GLU	CB-CG	5.41	1.62	1.52
1	B	324	GLU	CD-OE1	-5.37	1.19	1.25
1	A	132	GLU	CD-OE2	-5.35	1.19	1.25
1	B	725	GLU	CG-CD	-5.34	1.44	1.51
1	A	565	PHE	CB-CG	-5.33	1.42	1.51
1	C	1089	PHE	CB-CG	-5.33	1.42	1.51
1	A	37	TYR	CB-CG	-5.32	1.43	1.51
1	A	96	GLU	CD-OE2	-5.31	1.19	1.25
1	B	96	GLU	CD-OE2	-5.31	1.19	1.25
1	A	79	PHE	CE2-CZ	5.31	1.47	1.37
1	A	79	PHE	CE1-CZ	5.30	1.47	1.37
1	A	318	PHE	CB-CG	-5.29	1.42	1.51
3	L	36	TYR	CB-CG	-5.27	1.43	1.51

Continued on next page...

Continued from previous page...

Mol	Chain	Res	Type	Atoms	Z	Observed(Å)	Ideal(Å)
1	A	1096	VAL	CB-CG1	-5.27	1.41	1.52
1	C	204	TYR	CD2-CE2	-5.26	1.31	1.39
1	B	1096	VAL	CB-CG2	-5.25	1.41	1.52
1	C	135	PHE	CB-CG	-5.25	1.42	1.51
1	C	79	PHE	CE2-CZ	5.23	1.47	1.37
1	B	79	PHE	CE2-CZ	5.23	1.47	1.37
2	H	47	TRP	CZ3-CH2	-5.23	1.31	1.40
1	B	204	TYR	CB-CG	-5.22	1.43	1.51
1	C	1109	PHE	CB-CG	-5.22	1.42	1.51
1	A	369	TYR	CB-CG	-5.21	1.43	1.51
1	B	773	GLU	CG-CD	-5.20	1.44	1.51
1	A	157	PHE	CB-CG	-5.14	1.42	1.51
1	B	79	PHE	CB-CG	5.14	1.60	1.51
1	C	1103	PHE	CB-CG	-5.12	1.42	1.51
1	C	201	PHE	CB-CG	-5.11	1.42	1.51
1	A	306	PHE	CG-CD2	-5.10	1.31	1.38
1	B	1089	PHE	CB-CG	-5.08	1.42	1.51
1	B	168	PHE	CB-CG	-5.06	1.42	1.51
1	A	1017	GLU	CD-OE1	-5.04	1.20	1.25
1	A	192	PHE	CB-CG	-5.02	1.42	1.51
1	B	79	PHE	CE1-CZ	5.00	1.46	1.37

All (55) bond angle outliers are listed below:

Mol	Chain	Res	Type	Atoms	Z	Observed(°)	Ideal(°)
1	B	328	ARG	NE-CZ-NH2	-11.69	114.45	120.30
1	B	995	ARG	NE-CZ-NH1	9.98	125.29	120.30
1	B	328	ARG	NE-CZ-NH1	8.89	124.74	120.30
1	A	562	PHE	CB-CG-CD2	-8.80	114.64	120.80
1	B	1107	ARG	NE-CZ-NH2	-8.32	116.14	120.30
1	C	204	TYR	CB-CG-CD2	-8.26	116.04	121.00
1	B	905	ARG	NE-CZ-NH2	-8.19	116.21	120.30
1	B	995	ARG	NE-CZ-NH2	-8.08	116.26	120.30
1	A	1039	ARG	NE-CZ-NH2	-8.07	116.27	120.30
1	B	1014	ARG	NE-CZ-NH2	-7.98	116.31	120.30
1	C	905	ARG	NE-CZ-NH2	-7.89	116.35	120.30
1	B	905	ARG	NE-CZ-NH1	7.34	123.97	120.30
1	A	266	TYR	CB-CG-CD1	-7.27	116.64	121.00
1	C	905	ARG	NE-CZ-NH1	7.03	123.82	120.30
1	A	275	PHE	CB-CG-CD2	-6.93	115.95	120.80
1	A	674	TYR	CB-CG-CD1	-6.92	116.85	121.00
1	C	34	ARG	NE-CZ-NH2	-6.84	116.88	120.30

Continued on next page...

Continued from previous page...

Mol	Chain	Res	Type	Atoms	Z	Observed(°)	Ideal(°)
1	B	34	ARG	NE-CZ-NH2	-6.76	116.92	120.30
1	B	1039	ARG	NE-CZ-NH2	-6.75	116.93	120.30
1	C	275	PHE	CB-CG-CD2	-6.53	116.23	120.80
1	A	562	PHE	CB-CG-CD1	6.46	125.33	120.80
1	C	674	TYR	CB-CG-CD1	-6.35	117.19	121.00
1	C	1000	ARG	NE-CZ-NH1	6.17	123.39	120.30
1	A	44	ARG	NE-CZ-NH2	-6.07	117.27	120.30
1	B	102	ARG	NE-CZ-NH2	-6.02	117.29	120.30
1	C	102	ARG	NE-CZ-NH2	-6.01	117.29	120.30
1	B	275	PHE	CB-CG-CD1	6.01	125.01	120.80
1	B	237	ARG	NE-CZ-NH2	-6.00	117.30	120.30
1	A	347	PHE	CB-CG-CD2	-5.99	116.61	120.80
1	C	102	ARG	NE-CZ-NH1	5.93	123.27	120.30
1	B	275	PHE	CB-CG-CD2	-5.89	116.67	120.80
1	C	269	TYR	CB-CG-CD2	-5.69	117.59	121.00
1	A	275	PHE	CB-CG-CD1	5.58	124.71	120.80
1	A	102	ARG	NE-CZ-NH2	-5.51	117.55	120.30
1	A	1019	ARG	NE-CZ-NH1	5.48	123.04	120.30
1	A	200	TYR	CB-CG-CD2	-5.44	117.74	121.00
1	A	246	ARG	NE-CZ-NH2	-5.41	117.60	120.30
1	C	135	PHE	CB-CG-CD1	-5.40	117.02	120.80
1	C	577	ARG	NE-CZ-NH2	-5.39	117.60	120.30
1	A	905	ARG	NE-CZ-NH1	5.36	122.98	120.30
1	B	269	TYR	CB-CG-CD1	-5.33	117.81	121.00
1	C	38	TYR	CB-CG-CD1	-5.28	117.83	121.00
1	B	1047	TYR	CB-CG-CD2	-5.25	117.85	121.00
1	A	559	PHE	CB-CG-CD1	5.25	124.48	120.80
3	L	7	PRO	N-CA-C	-5.24	98.47	112.10
1	B	559	PHE	CB-CG-CD1	5.23	124.46	120.80
1	A	1019	ARG	NE-CZ-NH2	-5.20	117.70	120.30
1	A	905	ARG	NE-CZ-NH2	-5.17	117.72	120.30
1	C	275	PHE	CB-CG-CD1	5.15	124.41	120.80
1	C	559	PHE	CB-CG-CD1	5.11	124.38	120.80
1	B	1091	ARG	NE-CZ-NH2	5.11	122.85	120.30
2	H	67	PHE	CB-CG-CD1	5.10	124.37	120.80
1	B	1014	ARG	NE-CZ-NH1	5.02	122.81	120.30
2	H	79	TYR	CB-CG-CD2	-5.01	117.99	121.00
1	C	328	ARG	NE-CZ-NH2	-5.00	117.80	120.30

There are no chirality outliers.

There are no planarity outliers.

5.2 Too-close contacts ⓘ

In the following table, the Non-H and H(model) columns list the number of non-hydrogen atoms and hydrogen atoms in the chain respectively. The H(added) column lists the number of hydrogen atoms added and optimized by MolProbity. The Clashes column lists the number of clashes within the asymmetric unit, whereas Symm-Clashes lists symmetry-related clashes.

Mol	Chain	Non-H	H(model)	H(added)	Clashes	Symm-Clashes
1	A	7939	0	7735	26	0
1	B	6395	0	6260	10	0
1	C	6425	0	6292	5	0
2	H	890	0	857	8	0
3	L	763	0	727	24	0
4	A	56	0	52	0	0
4	B	56	0	52	0	0
4	C	42	0	39	0	0
All	All	22566	0	22014	65	0

The all-atom clashscore is defined as the number of clashes found per 1000 atoms (including hydrogen atoms). The all-atom clashscore for this structure is 1.

All (65) close contacts within the same asymmetric unit are listed below, sorted by their clash magnitude.

Atom-1	Atom-2	Interatomic distance (Å)	Clash overlap (Å)
3:L:27:ASN:ND2	3:L:31:GLN:OE1	2.12	0.81
3:L:28:VAL:HG12	3:L:30:SER:H	1.46	0.80
3:L:25:GLY:O	3:L:69:ASN:HB2	1.86	0.75
3:L:28:VAL:C	3:L:30:SER:N	2.36	0.72
1:A:503:VAL:HA	1:A:506:GLN:HG3	1.73	0.70
2:H:47:TRP:HB3	3:L:96:VAL:O	1.93	0.68
3:L:28:VAL:C	3:L:30:SER:H	2.00	0.64
3:L:28:VAL:O	3:L:31:GLN:N	2.32	0.63
3:L:28:VAL:HB	3:L:30:SER:HB3	1.80	0.62
1:A:351:TYR:O	1:A:468:ILE:HG22	1.99	0.62
3:L:5:THR:HG23	3:L:24:GLY:O	2.00	0.61
3:L:34:HIS:CE1	3:L:50:ARG:H	2.19	0.60
1:A:456:PHE:HB2	1:A:491:PRO:HA	1.85	0.59
3:L:49:TYR:HE1	3:L:54:ARG:C	2.07	0.57
1:A:437:ASN:HD21	1:A:506:GLN:NE2	2.02	0.56
1:A:470:THR:HB	1:A:490:PHE:CE1	2.41	0.56
3:L:36:TYR:OH	3:L:89:GLN:NE2	2.39	0.55
2:H:50:ILE:CD1	3:L:91:TRP:HH2	2.21	0.54
3:L:50:ARG:O	3:L:51:ASP:HB2	2.06	0.53

Continued on next page...

Continued from previous page...

Atom-1	Atom-2	Interatomic distance (Å)	Clash overlap (Å)
1:A:453:TYR:O	1:A:492:LEU:HA	2.10	0.52
1:A:495:TYR:CD2	1:A:495:TYR:N	2.78	0.52
1:C:964:LYS:NZ	1:B:571:ASP:OD2	2.38	0.51
1:A:495:TYR:H	1:A:495:TYR:HD2	1.58	0.51
1:A:350:VAL:O	1:A:351:TYR:HB3	2.09	0.51
1:B:1028:LYS:NZ	1:B:1042:PHE:O	2.44	0.51
3:L:28:VAL:HG13	3:L:68:GLY:O	2.11	0.50
1:A:421:TYR:O	1:A:454:ARG:HD2	2.11	0.50
1:A:351:TYR:O	1:A:351:TYR:CG	2.63	0.50
1:A:571:ASP:OD2	1:B:964:LYS:NZ	2.43	0.50
1:A:489:TYR:HD2	2:H:99:TYR:CE1	2.30	0.50
1:B:111:ASP:OD1	1:B:111:ASP:N	2.42	0.49
1:A:908:GLY:O	1:A:1038:LYS:NZ	2.46	0.48
3:L:25:GLY:C	3:L:27:ASN:N	2.67	0.48
1:C:1028:LYS:NZ	1:C:1042:PHE:O	2.47	0.48
1:A:451:TYR:O	1:A:494:SER:HA	2.13	0.47
3:L:90:VAL:CG1	3:L:97:ALA:HB3	2.45	0.47
1:A:1084:ASP:N	1:A:1084:ASP:OD1	2.45	0.47
1:A:490:PHE:CE2	1:A:492:LEU:HB2	2.51	0.46
1:B:557:LYS:NZ	1:B:574:ASP:OD2	2.49	0.46
1:A:490:PHE:HE2	1:A:492:LEU:HB2	1.80	0.46
1:A:452:LEU:HA	1:A:494:SER:HA	1.99	0.45
1:C:1142:GLN:N	1:C:1143:PRO:CD	2.80	0.45
2:H:97:SER:OG	2:H:98:ASP:N	2.50	0.45
2:H:61:ASP:N	2:H:61:ASP:OD1	2.47	0.44
3:L:48:ILE:HG23	3:L:52:SER:C	2.38	0.44
3:L:26:ASP:N	3:L:26:ASP:OD1	2.51	0.43
1:B:1142:GLN:N	1:B:1143:PRO:CD	2.82	0.43
1:C:599:THR:HG22	1:C:601:GLY:H	1.84	0.43
3:L:28:VAL:O	3:L:30:SER:N	2.52	0.43
2:H:47:TRP:CB	3:L:96:VAL:O	2.66	0.42
1:A:351:TYR:CE1	1:A:468:ILE:HA	2.53	0.42
2:H:47:TRP:CG	3:L:96:VAL:HB	2.54	0.42
1:A:1142:GLN:N	1:A:1143:PRO:CD	2.82	0.42
1:A:1097:SER:HB2	1:A:1102:TRP:CD2	2.54	0.42
3:L:48:ILE:HG23	3:L:52:SER:O	2.19	0.41
1:B:326:ILE:HD12	1:B:534:VAL:H	1.85	0.41
1:B:134:GLN:O	1:B:160:TYR:HB2	2.19	0.41
2:H:47:TRP:CE2	3:L:96:VAL:HG23	2.55	0.41
1:C:53:ASP:OD2	1:C:195:LYS:NZ	2.53	0.41
1:A:453:TYR:HE2	1:A:455:LEU:HD13	1.85	0.41

Continued on next page...

Continued from previous page...

Atom-1	Atom-2	Interatomic distance (Å)	Clash overlap (Å)
1:B:137:ASN:OD1	1:B:137:ASN:N	2.54	0.41
1:A:503:VAL:CA	1:A:506:GLN:HG3	2.46	0.41
1:A:350:VAL:HG11	1:A:402:ILE:HG22	2.03	0.40
1:A:599:THR:HG22	1:A:601:GLY:H	1.86	0.40
1:B:1097:SER:HB3	1:B:1102:TRP:CD2	2.56	0.40

There are no symmetry-related clashes.

5.3 Torsion angles [i](#)

5.3.1 Protein backbone [i](#)

In the following table, the Percentiles column shows the percent Ramachandran outliers of the chain as a percentile score with respect to all PDB entries followed by that with respect to all EM entries.

The Analysed column shows the number of residues for which the backbone conformation was analysed, and the total number of residues.

Mol	Chain	Analysed	Favoured	Allowed	Outliers	Percentiles	
1	A	999/1280 (78%)	968 (97%)	31 (3%)	0	100	100
1	B	802/1280 (63%)	783 (98%)	19 (2%)	0	100	100
1	C	806/1280 (63%)	784 (97%)	22 (3%)	0	100	100
2	H	115/118 (98%)	110 (96%)	5 (4%)	0	100	100
3	L	100/104 (96%)	96 (96%)	4 (4%)	0	100	100
All	All	2822/4062 (70%)	2741 (97%)	81 (3%)	0	100	100

There are no Ramachandran outliers to report.

5.3.2 Protein sidechains [i](#)

In the following table, the Percentiles column shows the percent sidechain outliers of the chain as a percentile score with respect to all PDB entries followed by that with respect to all EM entries.

The Analysed column shows the number of residues for which the sidechain conformation was analysed, and the total number of residues.

Mol	Chain	Analysed	Rotameric	Outliers	Percentiles	
1	A	892/1108 (80%)	889 (100%)	3 (0%)	91	94
1	B	725/1108 (65%)	725 (100%)	0	100	100
1	C	729/1108 (66%)	729 (100%)	0	100	100
2	H	96/97 (99%)	96 (100%)	0	100	100
3	L	82/84 (98%)	79 (96%)	3 (4%)	29	54
All	All	2524/3505 (72%)	2518 (100%)	6 (0%)	91	96

All (6) residues with a non-rotameric sidechain are listed below:

Mol	Chain	Res	Type
1	A	351	TYR
1	A	453	TYR
1	A	495	TYR
3	L	26	ASP
3	L	31	GLN
3	L	96	VAL

Sometimes sidechains can be flipped to improve hydrogen bonding and reduce clashes. All (2) such sidechains are listed below:

Mol	Chain	Res	Type
1	A	506	GLN
3	L	89	GLN

5.3.3 RNA [i](#)

There are no RNA molecules in this entry.

5.4 Non-standard residues in protein, DNA, RNA chains [i](#)

There are no non-standard protein/DNA/RNA residues in this entry.

5.5 Carbohydrates [i](#)

There are no oligosaccharides in this entry.

5.6 Ligand geometry [i](#)

11 ligands are modelled in this entry.

In the following table, the Counts columns list the number of bonds (or angles) for which Mogul statistics could be retrieved, the number of bonds (or angles) that are observed in the model and the number of bonds (or angles) that are defined in the Chemical Component Dictionary. The Link column lists molecule types, if any, to which the group is linked. The Z score for a bond length (or angle) is the number of standard deviations the observed value is removed from the expected value. A bond length (or angle) with $|Z| > 2$ is considered an outlier worth inspection. RMSZ is the root-mean-square of all Z scores of the bond lengths (or angles).

Mol	Type	Chain	Res	Link	Bond lengths			Bond angles		
					Counts	RMSZ	# $ Z > 2$	Counts	RMSZ	# $ Z > 2$
4	NAG	B	1301	1	14,14,15	2.01	4 (28%)	17,19,21	1.06	1 (5%)
4	NAG	A	1304	1	14,14,15	2.02	4 (28%)	17,19,21	0.96	1 (5%)
4	NAG	C	1302	1	14,14,15	2.05	5 (35%)	17,19,21	1.08	1 (5%)
4	NAG	B	1304	1	14,14,15	2.34	5 (35%)	17,19,21	1.04	1 (5%)
4	NAG	A	1301	1	14,14,15	2.09	5 (35%)	17,19,21	0.96	1 (5%)
4	NAG	B	1302	1	14,14,15	2.10	5 (35%)	17,19,21	0.98	1 (5%)
4	NAG	C	1303	1	14,14,15	2.22	5 (35%)	17,19,21	0.97	0
4	NAG	A	1302	1	14,14,15	2.07	4 (28%)	17,19,21	1.17	3 (17%)
4	NAG	A	1303	1	14,14,15	2.06	5 (35%)	17,19,21	1.05	1 (5%)
4	NAG	B	1303	1	14,14,15	2.17	4 (28%)	17,19,21	0.95	0
4	NAG	C	1301	1	14,14,15	2.04	4 (28%)	17,19,21	1.00	1 (5%)

In the following table, the Chirals column lists the number of chiral outliers, the number of chiral centers analysed, the number of these observed in the model and the number defined in the Chemical Component Dictionary. Similar counts are reported in the Torsion and Rings columns. '-' means no outliers of that kind were identified.

Mol	Type	Chain	Res	Link	Chirals	Torsions	Rings
4	NAG	B	1301	1	-	1/6/23/26	0/1/1/1
4	NAG	A	1304	1	-	0/6/23/26	0/1/1/1
4	NAG	C	1302	1	-	1/6/23/26	0/1/1/1
4	NAG	B	1304	1	-	0/6/23/26	0/1/1/1
4	NAG	A	1301	1	-	0/6/23/26	0/1/1/1
4	NAG	B	1302	1	-	1/6/23/26	0/1/1/1
4	NAG	C	1303	1	-	1/6/23/26	0/1/1/1
4	NAG	A	1302	1	-	0/6/23/26	0/1/1/1
4	NAG	A	1303	1	-	1/6/23/26	0/1/1/1
4	NAG	B	1303	1	-	2/6/23/26	0/1/1/1
4	NAG	C	1301	1	-	1/6/23/26	0/1/1/1

All (50) bond length outliers are listed below:

Mol	Chain	Res	Type	Atoms	Z	Observed(Å)	Ideal(Å)
4	B	1304	NAG	C1-C2	6.30	1.60	1.52
4	C	1303	NAG	C1-C2	5.83	1.60	1.52
4	B	1303	NAG	C1-C2	5.64	1.60	1.52
4	A	1301	NAG	C1-C2	5.49	1.59	1.52
4	B	1302	NAG	C1-C2	5.21	1.59	1.52
4	A	1302	NAG	C1-C2	5.18	1.59	1.52
4	A	1304	NAG	C1-C2	5.14	1.59	1.52
4	A	1303	NAG	C1-C2	5.09	1.59	1.52
4	C	1301	NAG	C1-C2	5.08	1.59	1.52
4	C	1302	NAG	C1-C2	5.03	1.59	1.52
4	B	1301	NAG	C1-C2	5.00	1.59	1.52
4	B	1303	NAG	O5-C5	3.51	1.50	1.43
4	B	1304	NAG	O5-C5	3.39	1.50	1.43
4	C	1303	NAG	O5-C5	3.27	1.49	1.43
4	B	1302	NAG	O5-C5	3.25	1.49	1.43
4	C	1301	NAG	O5-C5	3.24	1.49	1.43
4	A	1303	NAG	O5-C5	3.22	1.49	1.43
4	B	1301	NAG	O5-C5	3.20	1.49	1.43
4	C	1302	NAG	O5-C5	3.19	1.49	1.43
4	A	1304	NAG	O5-C5	3.07	1.49	1.43
4	A	1302	NAG	O5-C5	3.03	1.49	1.43
4	A	1301	NAG	O5-C5	2.88	1.49	1.43
4	C	1301	NAG	O5-C1	2.68	1.48	1.43
4	B	1303	NAG	O5-C1	2.64	1.48	1.43
4	B	1304	NAG	O5-C1	2.64	1.48	1.43
4	C	1303	NAG	O5-C1	2.64	1.48	1.43
4	A	1303	NAG	O5-C1	2.54	1.48	1.43
4	B	1302	NAG	O5-C1	2.54	1.48	1.43
4	A	1304	NAG	O5-C1	2.53	1.47	1.43
4	B	1301	NAG	O5-C1	2.50	1.47	1.43
4	B	1304	NAG	C3-C2	2.47	1.57	1.52
4	A	1302	NAG	O5-C1	2.45	1.47	1.43
4	A	1301	NAG	O5-C1	2.45	1.47	1.43
4	C	1302	NAG	O5-C1	2.45	1.47	1.43
4	A	1302	NAG	C3-C2	2.43	1.57	1.52
4	B	1302	NAG	C3-C2	2.29	1.57	1.52
4	A	1303	NAG	C3-C2	2.28	1.57	1.52
4	C	1302	NAG	C3-C2	2.27	1.57	1.52
4	C	1303	NAG	C3-C2	2.24	1.57	1.52
4	B	1303	NAG	C3-C2	2.23	1.57	1.52
4	C	1302	NAG	C4-C5	2.22	1.57	1.53
4	B	1301	NAG	C4-C5	2.18	1.57	1.53
4	B	1304	NAG	C4-C5	2.18	1.57	1.53

Continued on next page...

Continued from previous page...

Mol	Chain	Res	Type	Atoms	Z	Observed(Å)	Ideal(Å)
4	A	1304	NAG	C3-C2	2.15	1.57	1.52
4	A	1301	NAG	C3-C2	2.12	1.57	1.52
4	C	1303	NAG	C4-C5	2.11	1.57	1.53
4	B	1302	NAG	C4-C5	2.11	1.57	1.53
4	C	1301	NAG	C4-C5	2.04	1.57	1.53
4	A	1303	NAG	C4-C5	2.03	1.57	1.53
4	A	1301	NAG	C2-N2	2.03	1.49	1.46

All (11) bond angle outliers are listed below:

Mol	Chain	Res	Type	Atoms	Z	Observed(°)	Ideal(°)
4	A	1302	NAG	C8-C7-N2	2.67	120.54	116.12
4	A	1303	NAG	C8-C7-N2	2.41	120.11	116.12
4	C	1302	NAG	C8-C7-N2	2.41	120.11	116.12
4	B	1302	NAG	C8-C7-N2	2.40	120.09	116.12
4	B	1304	NAG	C8-C7-N2	2.34	120.00	116.12
4	B	1301	NAG	C8-C7-N2	2.31	119.95	116.12
4	C	1301	NAG	C8-C7-N2	2.26	119.86	116.12
4	A	1302	NAG	O7-C7-C8	-2.21	118.12	122.05
4	A	1302	NAG	C1-O5-C5	2.14	115.05	112.19
4	A	1304	NAG	C8-C7-N2	2.05	119.53	116.12
4	A	1301	NAG	C1-O5-C5	2.05	114.94	112.19

There are no chirality outliers.

All (8) torsion outliers are listed below:

Mol	Chain	Res	Type	Atoms
4	B	1303	NAG	O5-C5-C6-O6
4	B	1303	NAG	C4-C5-C6-O6
4	C	1303	NAG	O5-C5-C6-O6
4	B	1302	NAG	O5-C5-C6-O6
4	C	1301	NAG	O5-C5-C6-O6
4	B	1301	NAG	O5-C5-C6-O6
4	A	1303	NAG	O5-C5-C6-O6
4	C	1302	NAG	O5-C5-C6-O6

There are no ring outliers.

No monomer is involved in short contacts.

5.7 Other polymers

There are no such residues in this entry.

5.8 Polymer linkage issues

There are no chain breaks in this entry.

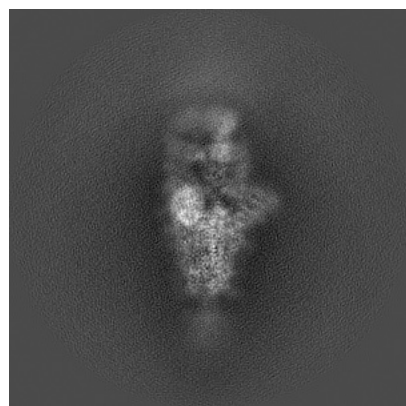
6 Map visualisation [i](#)

This section contains visualisations of the EMDB entry EMD-27113. These allow visual inspection of the internal detail of the map and identification of artifacts.

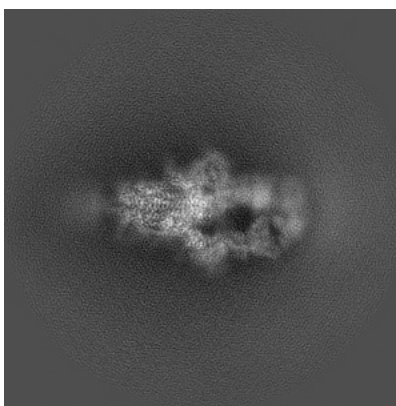
Images derived from a raw map, generated by summing the deposited half-maps, are presented below the corresponding image components of the primary map to allow further visual inspection and comparison with those of the primary map.

6.1 Orthogonal projections [i](#)

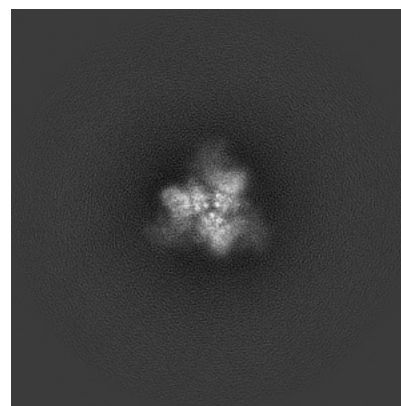
6.1.1 Primary map



X

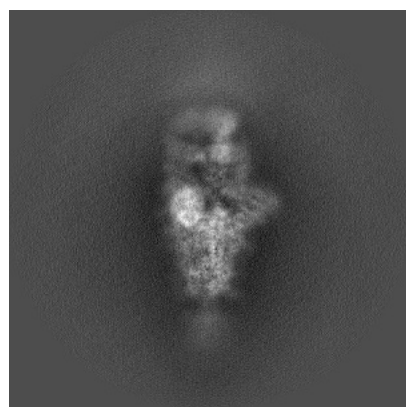


Y

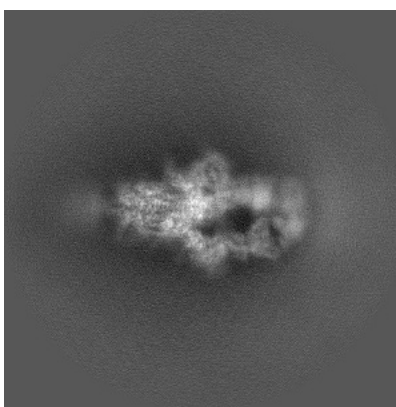


Z

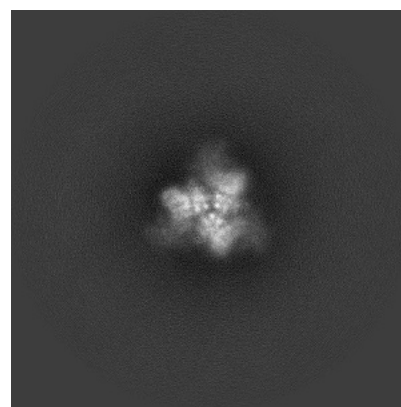
6.1.2 Raw map



X



Y



Z

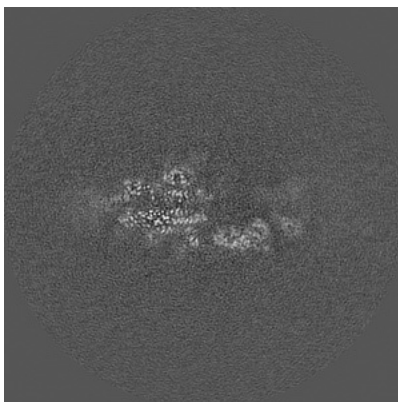
The images above show the map projected in three orthogonal directions.

6.2 Central slices [i](#)

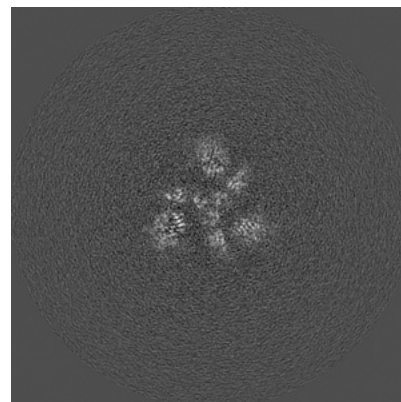
6.2.1 Primary map



X Index: 224



Y Index: 224



Z Index: 224

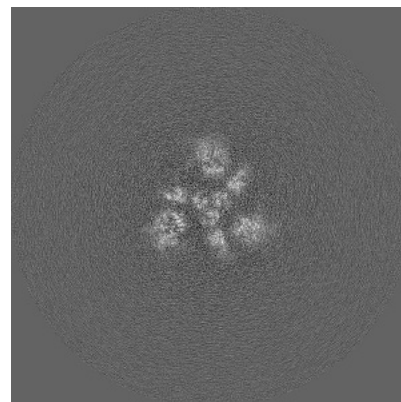
6.2.2 Raw map



X Index: 224



Y Index: 224

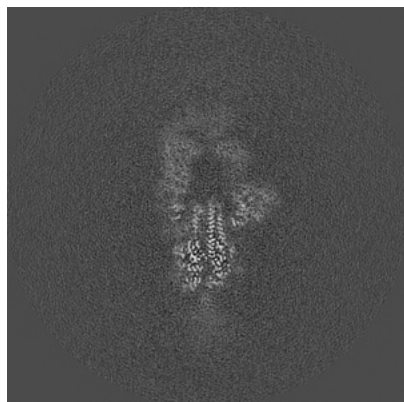


Z Index: 224

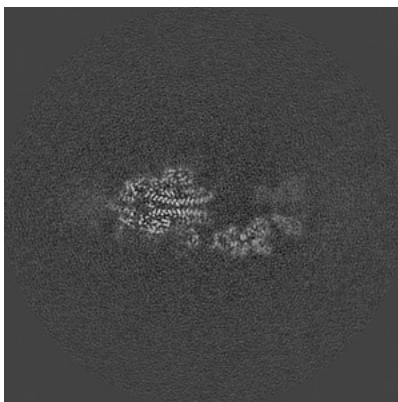
The images above show central slices of the map in three orthogonal directions.

6.3 Largest variance slices [i](#)

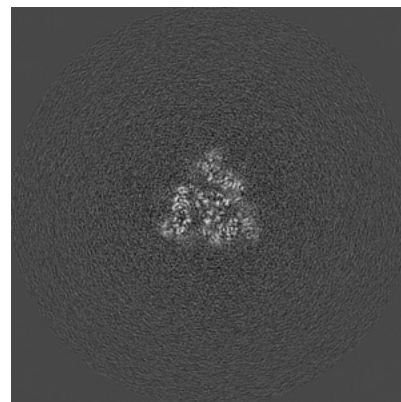
6.3.1 Primary map



X Index: 231

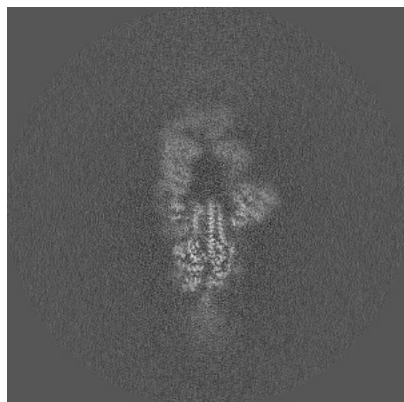


Y Index: 228



Z Index: 211

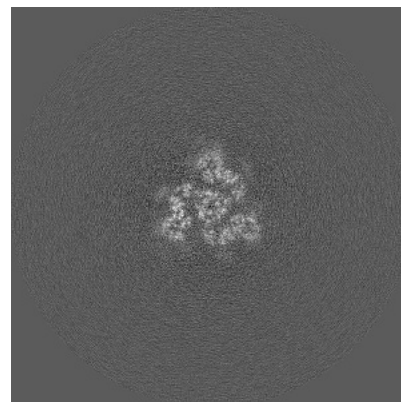
6.3.2 Raw map



X Index: 231



Y Index: 228

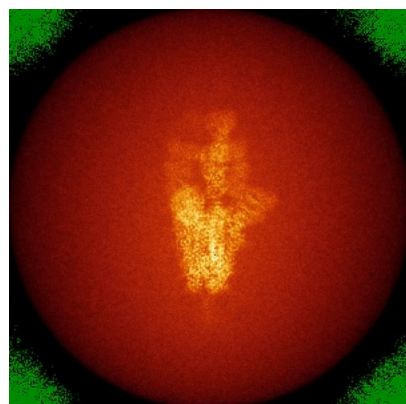


Z Index: 216

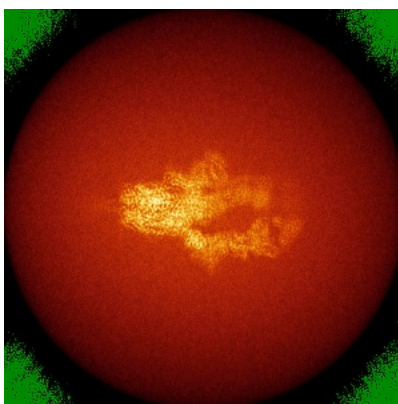
The images above show the largest variance slices of the map in three orthogonal directions.

6.4 Orthogonal standard-deviation projections (False-color) [i](#)

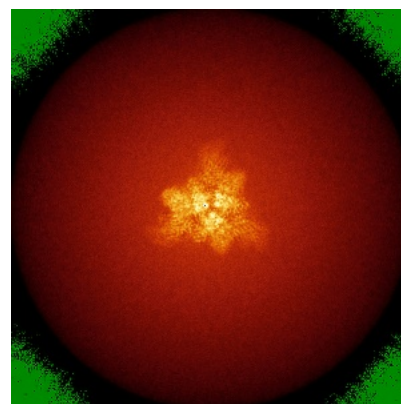
6.4.1 Primary map



X

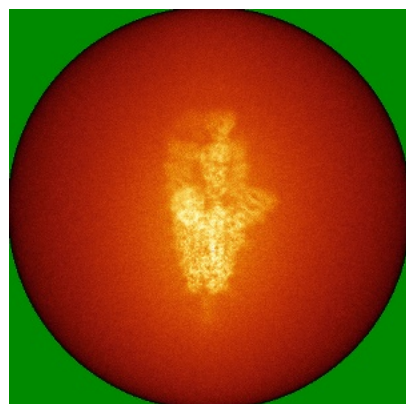


Y

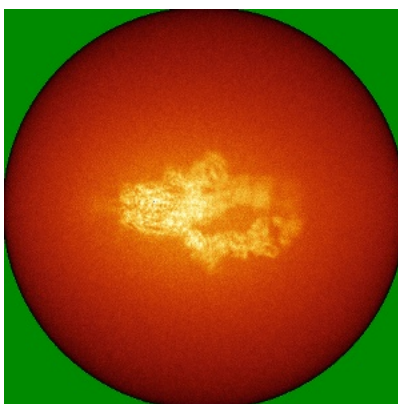


Z

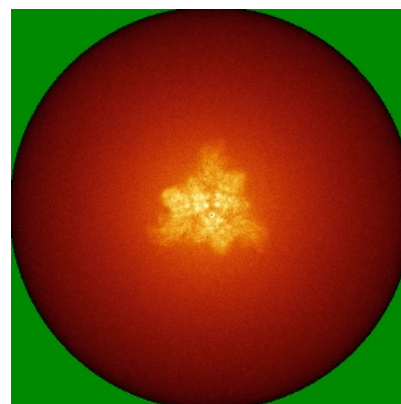
6.4.2 Raw map



X



Y

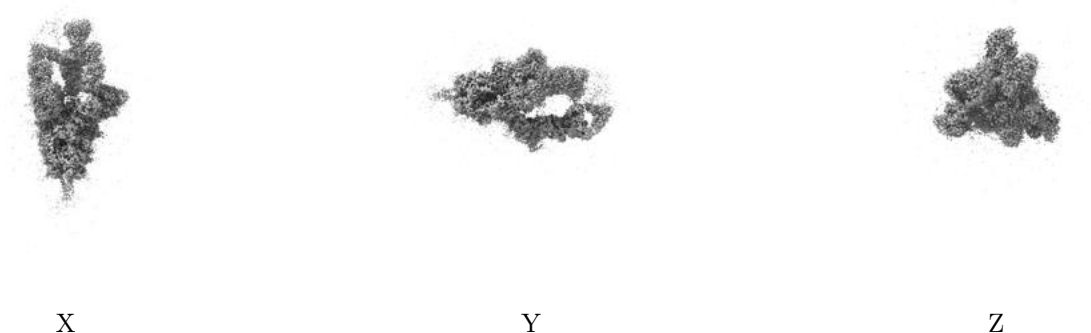


Z

The images above show the map standard deviation projections with false color in three orthogonal directions. Minimum values are shown in green, max in blue, and dark to light orange shades represent small to large values respectively.

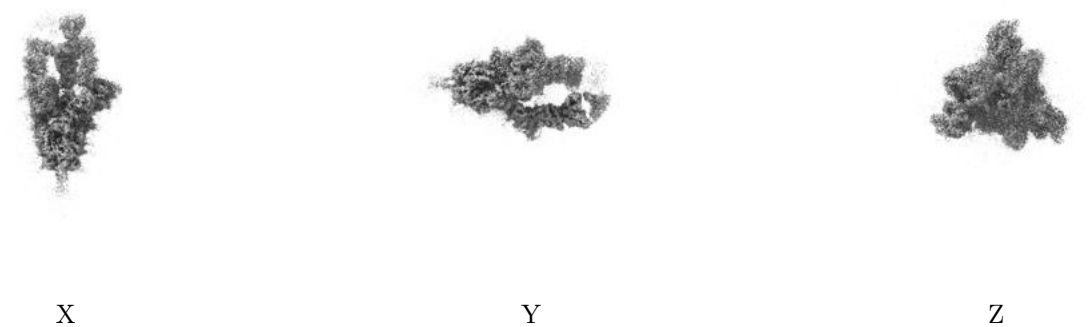
6.5 Orthogonal surface views [i](#)

6.5.1 Primary map



The images above show the 3D surface view of the map at the recommended contour level 0.01. These images, in conjunction with the slice images, may facilitate assessment of whether an appropriate contour level has been provided.

6.5.2 Raw map



These images show the 3D surface of the raw map. The raw map's contour level was selected so that its surface encloses the same volume as the primary map does at its recommended contour level.

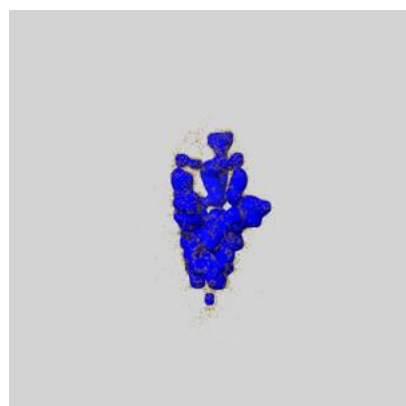
6.6 Mask visualisation [i](#)

This section shows the 3D surface view of the primary map at 50% transparency overlaid with the specified mask at 0% transparency

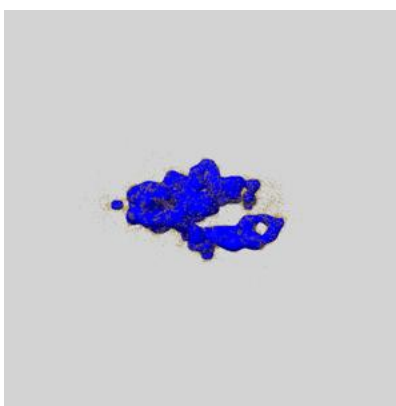
A mask typically either:

- Encompasses the whole structure
- Separates out a domain, a functional unit, a monomer or an area of interest from a larger structure

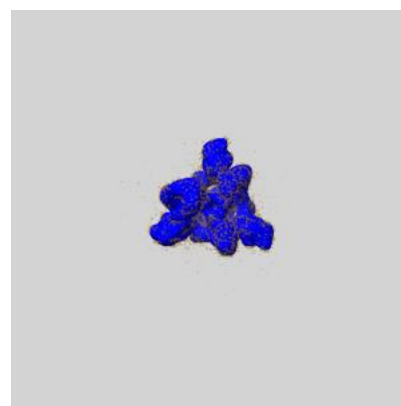
6.6.1 emd_27113_msk_1.map [i](#)



X



Y

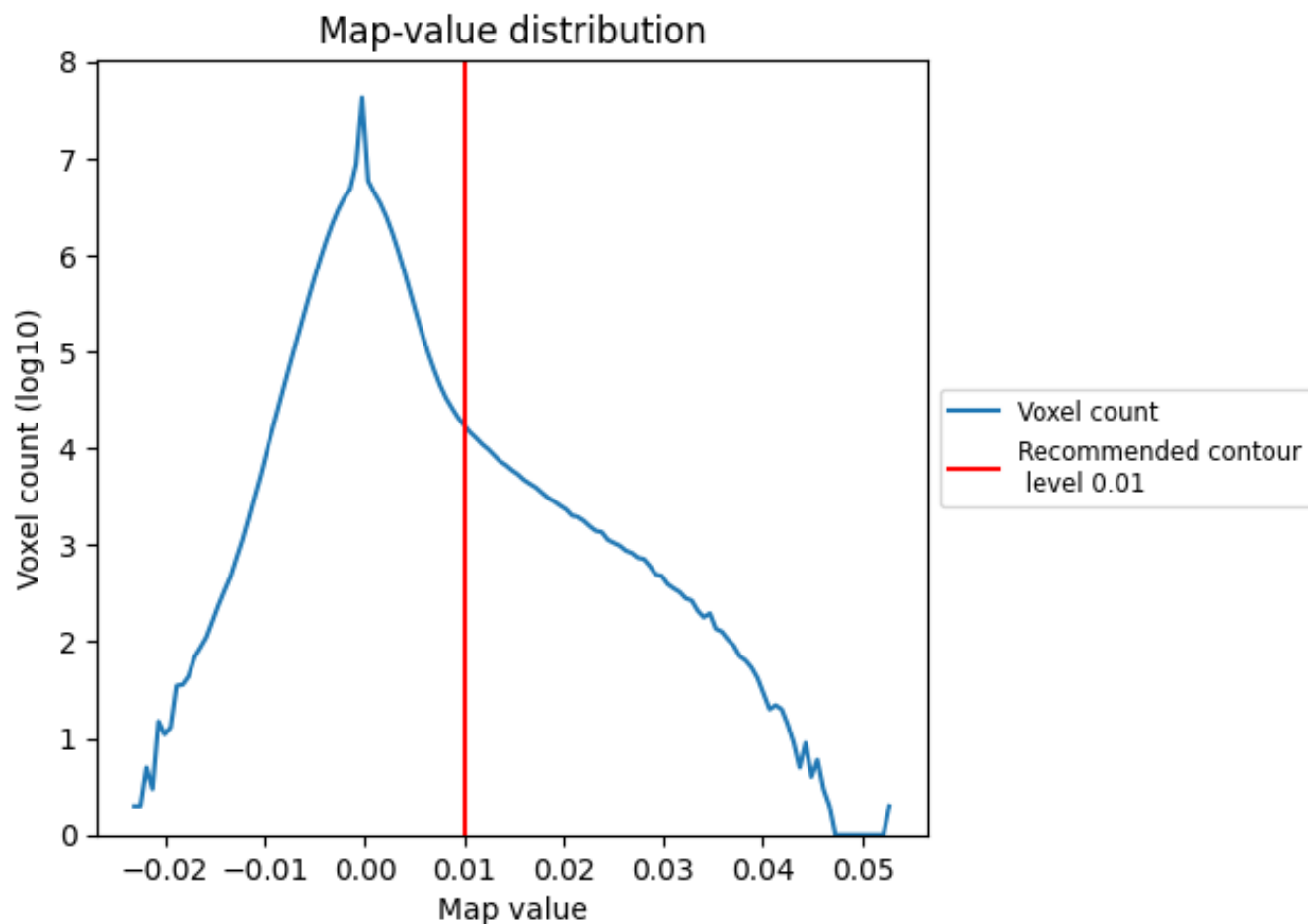


Z

7 Map analysis [i](#)

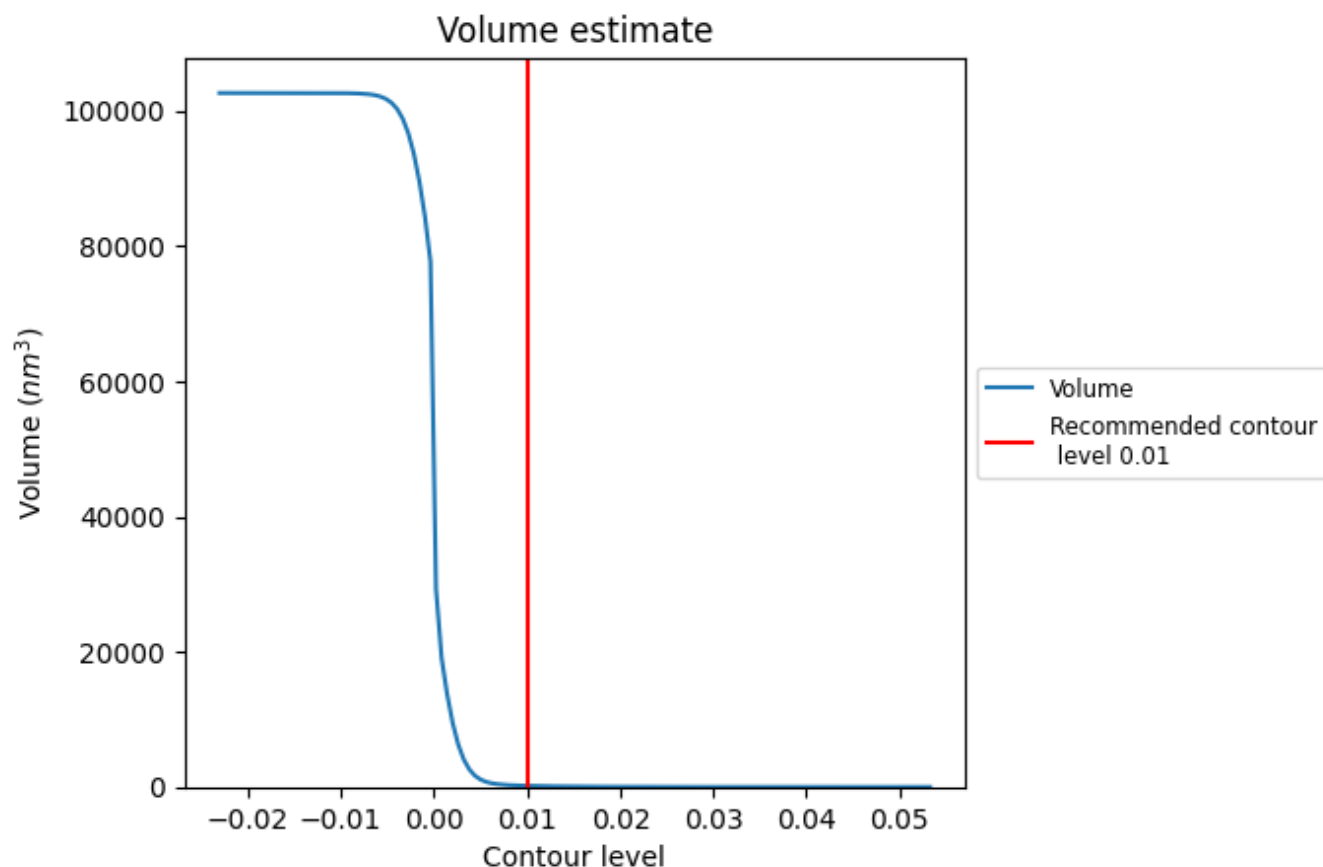
This section contains the results of statistical analysis of the map.

7.1 Map-value distribution [i](#)



The map-value distribution is plotted in 128 intervals along the x-axis. The y-axis is logarithmic. A spike in this graph at zero usually indicates that the volume has been masked.

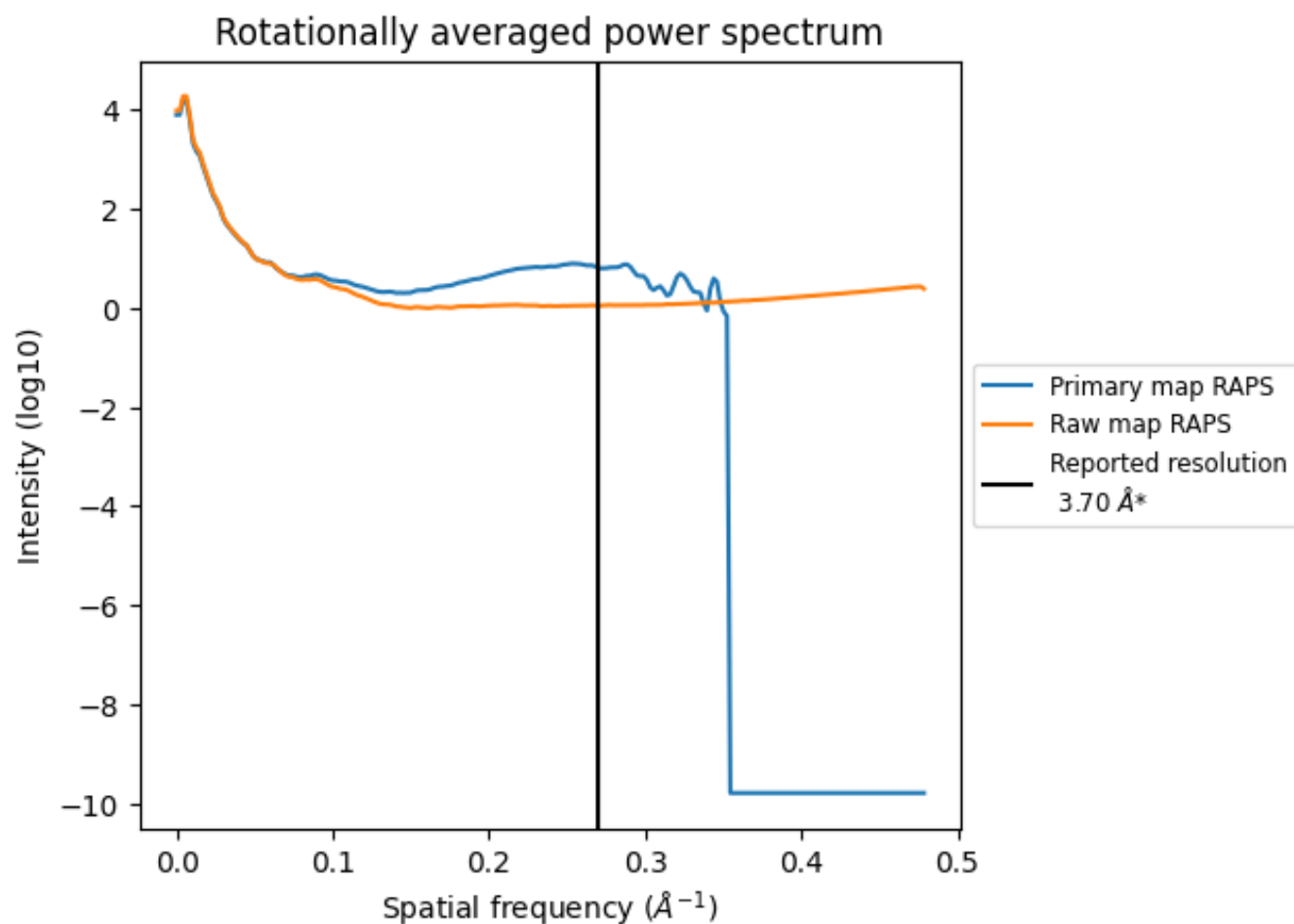
7.2 Volume estimate [i](#)



The volume at the recommended contour level is 169 nm^3 ; this corresponds to an approximate mass of 153 kDa.

The volume estimate graph shows how the enclosed volume varies with the contour level. The recommended contour level is shown as a vertical line and the intersection between the line and the curve gives the volume of the enclosed surface at the given level.

7.3 Rotationally averaged power spectrum ⓘ

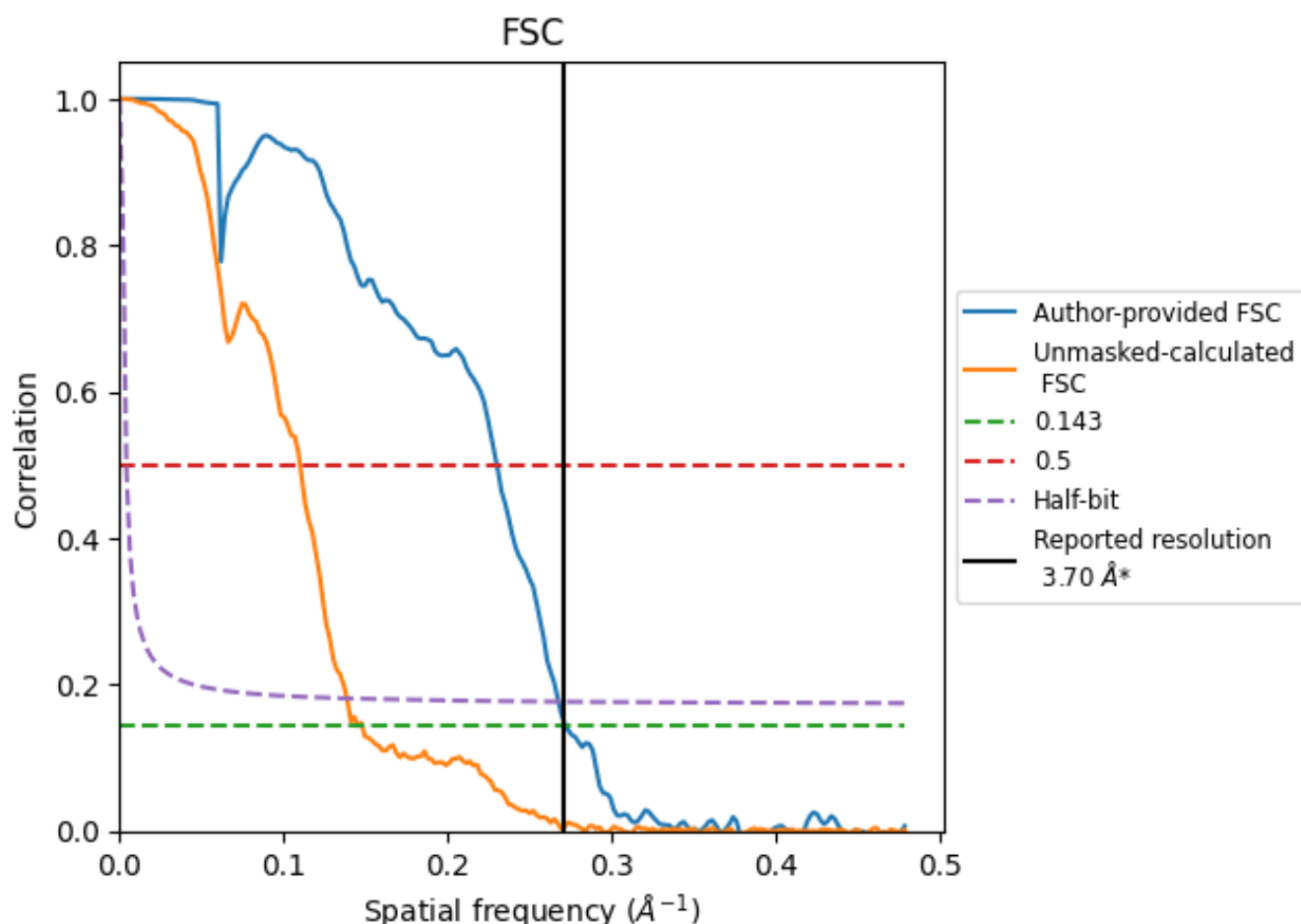


*Reported resolution corresponds to spatial frequency of 0.270 Å⁻¹

8 Fourier-Shell correlation [i](#)

Fourier-Shell Correlation (FSC) is the most commonly used method to estimate the resolution of single-particle and subtomogram-averaged maps. The shape of the curve depends on the imposed symmetry, mask and whether or not the two 3D reconstructions used were processed from a common reference. The reported resolution is shown as a black line. A curve is displayed for the half-bit criterion in addition to lines showing the 0.143 gold standard cut-off and 0.5 cut-off.

8.1 FSC [i](#)



*Reported resolution corresponds to spatial frequency of 0.270 Å⁻¹

8.2 Resolution estimates [i](#)

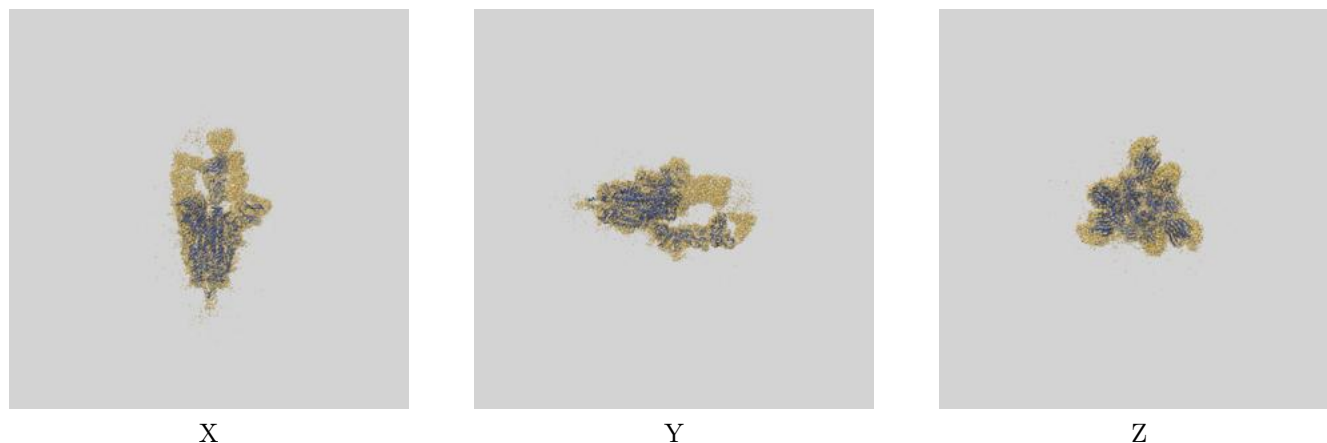
Resolution estimate (Å)	Estimation criterion (FSC cut-off)		
	0.143	0.5	Half-bit
Reported by author	3.70	-	-
Author-provided FSC curve	3.68	4.35	3.74
Unmasked-calculated*	6.89	9.09	7.21

*Resolution estimate based on FSC curve calculated by comparison of deposited half-maps. The value from deposited half-maps intersecting FSC 0.143 CUT-OFF 6.89 differs from the reported value 3.7 by more than 10 %

9 Map-model fit [i](#)

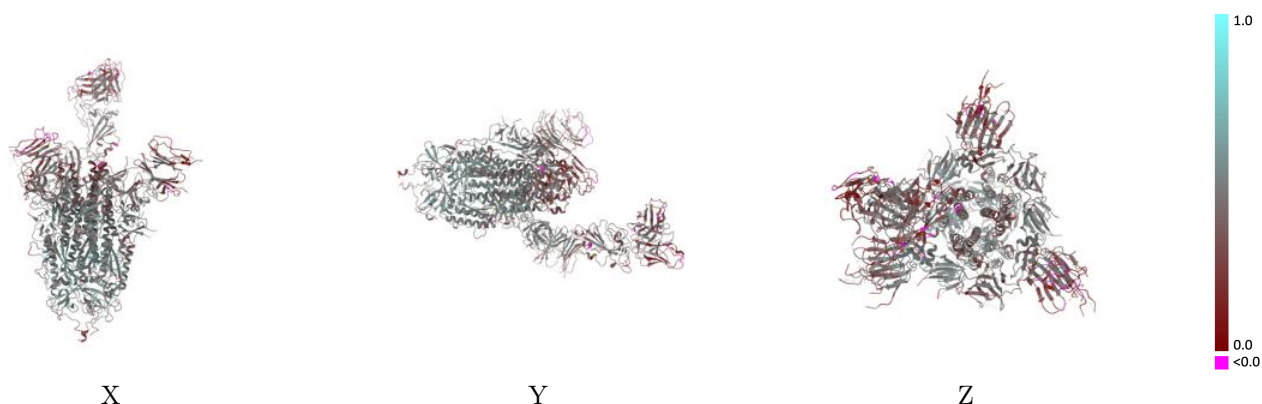
This section contains information regarding the fit between EMDB map EMD-27113 and PDB model 8D0Z. Per-residue inclusion information can be found in section [3](#) on page [11](#).

9.1 Map-model overlay [i](#)



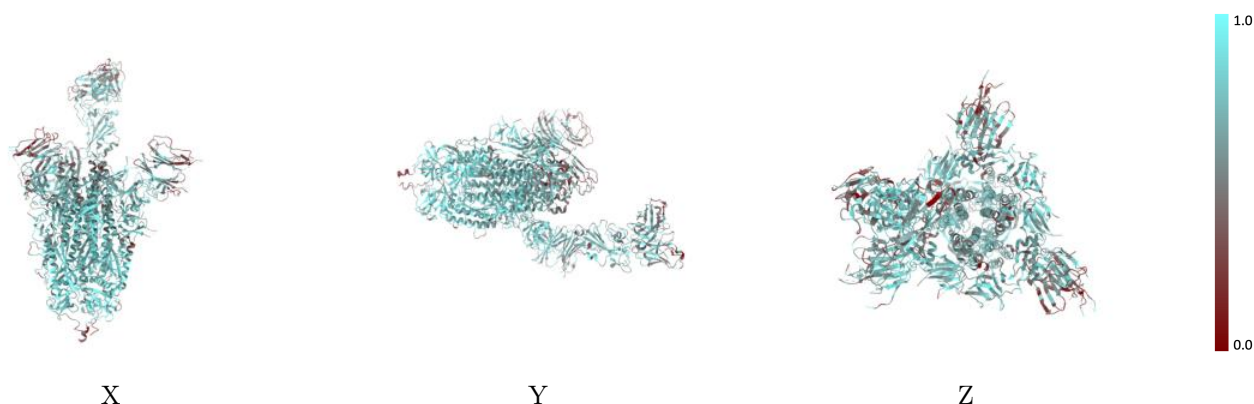
The images above show the 3D surface view of the map at the recommended contour level 0.01 at 50% transparency in yellow overlaid with a ribbon representation of the model coloured in blue. These images allow for the visual assessment of the quality of fit between the atomic model and the map.

9.2 Q-score mapped to coordinate model [i](#)



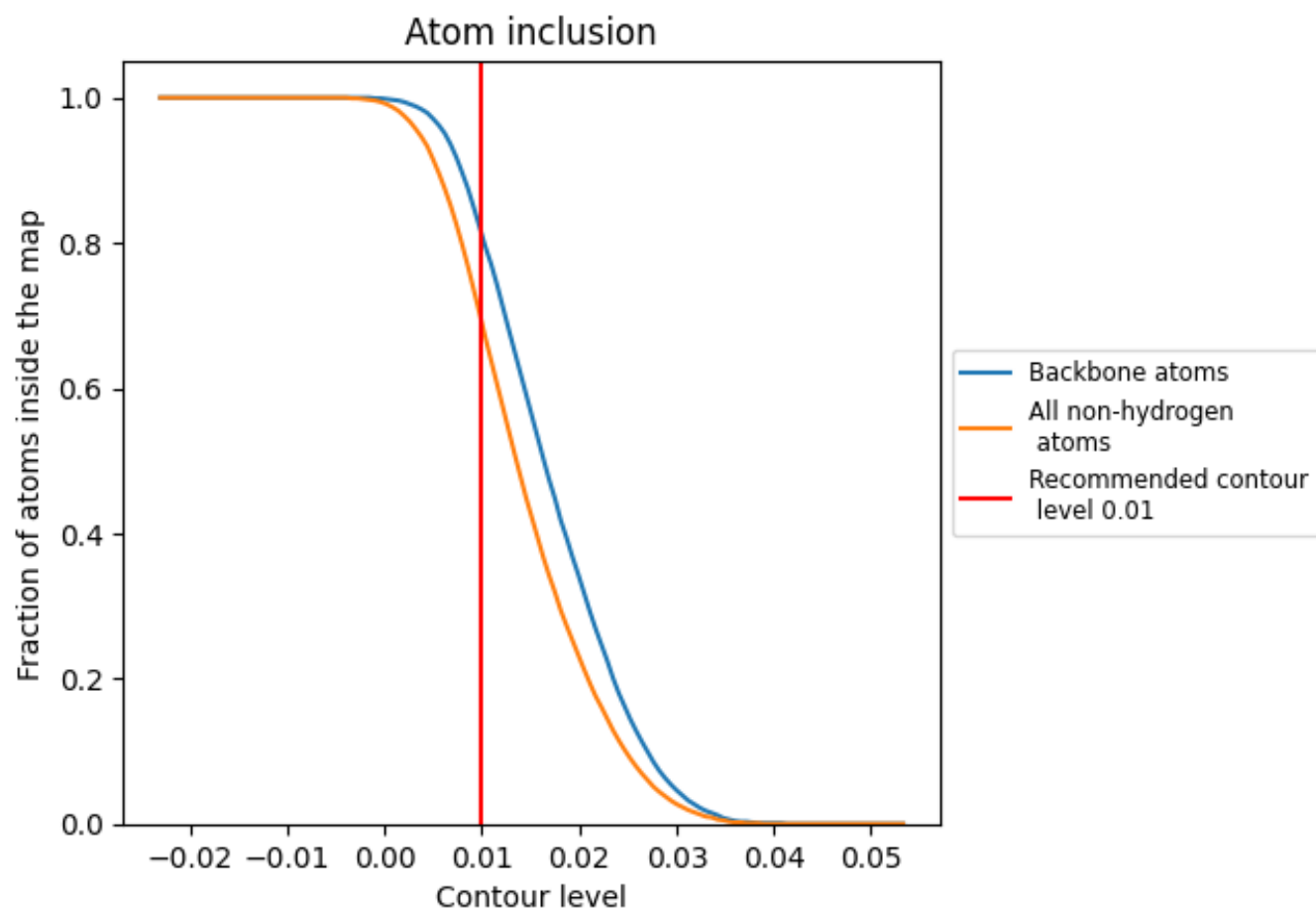
The images above show the model with each residue coloured according to its Q-score. This shows their resolvability in the map with higher Q-score values reflecting better resolvability. Please note: Q-score is calculating the resolvability of atoms, and thus high values are only expected at resolutions at which atoms can be resolved. Low Q-score values may therefore be expected for many entries.

9.3 Atom inclusion mapped to coordinate model [i](#)



The images above show the model with each residue coloured according to its atom inclusion. This shows to what extent they are inside the map at the recommended contour level (0.01).

9.4 Atom inclusion [i](#)



At the recommended contour level, 81% of all backbone atoms, 69% of all non-hydrogen atoms, are inside the map.

9.5 Map-model fit summary ⓘ

The table lists the average atom inclusion at the recommended contour level (0.01) and Q-score for the entire model and for each chain.

Chain	Atom inclusion	Q-score
All	<div></div> 0.6900	<div></div> 0.4200
A	<div></div> 0.6850	<div></div> 0.4130
B	<div></div> 0.7350	<div></div> 0.4530
C	<div></div> 0.6810	<div></div> 0.4260
H	<div></div> 0.5610	<div></div> 0.3110
L	<div></div> 0.5810	<div></div> 0.3030

