



## Full wwPDB EM Validation Report ⓘ

Feb 20, 2025 – 09:50 AM EST

PDB ID : 4D0A  
EMDB ID : EMD-2636  
Title : 3D EM map of the sodium proton antiporter MjNhaP1 from Methanocaldococcus jannaschii  
Authors : Paulino, C.; Woehlert, D.; Yildiz, O.; Kuhlbrandt, W.  
Deposited on : 2014-04-25  
Resolution : 6.00 Å(reported)

This is a Full wwPDB EM Validation Report for a publicly released PDB entry.

We welcome your comments at [validation@mail.wwpdb.org](mailto:validation@mail.wwpdb.org)

A user guide is available at

<https://www.wwpdb.org/validation/2017/EMValidationReportHelp>  
with specific help available everywhere you see the ⓘ symbol.

The types of validation reports are described at

<http://www.wwpdb.org/validation/2017/FAQs#types>.

---

The following versions of software and data (see [references ⓘ](#)) were used in the production of this report:

EMDB validation analysis : 0.0.1.dev117  
MolProbity : 4.02b-467  
Percentile statistics : 20231227.v01 (using entries in the PDB archive December 27th 2023)  
MapQ : 1.9.13  
Ideal geometry (proteins) : Engh & Huber (2001)  
Ideal geometry (DNA, RNA) : Parkinson et al. (1996)  
Validation Pipeline (wwPDB-VP) : 2.41.4



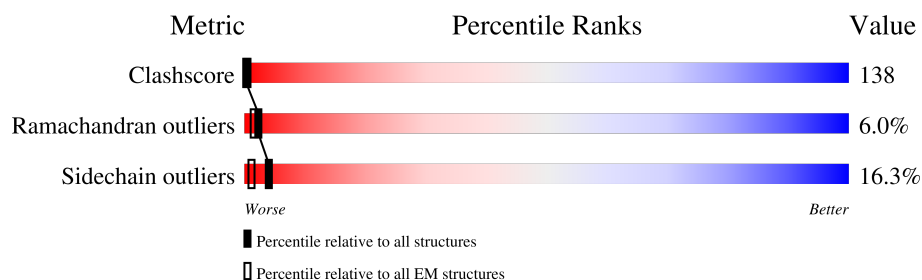
# 1 Overall quality at a glance

The following experimental techniques were used to determine the structure:

*ELECTRON CRYSTALLOGRAPHY*

The reported resolution of this entry is 6.00 Å.

Percentile scores (ranging between 0-100) for global validation metrics of the entry are shown in the following graphic. The table shows the number of entries on which the scores are based.



Metric	Whole archive (#Entries)	EM structures (#Entries)
Clashscore	210492	15764
Ramachandran outliers	207382	16835
Sidechain outliers	206894	16415

The table below summarises the geometric issues observed across the polymeric chains and their fit to the map. The red, orange, yellow and green segments of the bar indicate the fraction of residues that contain outliers for  $\geq 3$ , 2, 1 and 0 types of geometric quality criteria respectively. A grey segment represents the fraction of residues that are not modelled. The numeric value for each fraction is indicated below the corresponding segment, with a dot representing fractions  $\leq 5\%$ . The upper red bar (where present) indicates the fraction of residues that have poor fit to the EM map (all-atom inclusion  $< 40\%$ ). The numeric value is given above the bar.

Mol	Chain	Length	Quality of chain
1	B	426	



## 2 Entry composition

There is only 1 type of molecule in this entry. The entry contains 3175 atoms, of which 0 are hydrogens and 0 are deuteriums.

In the tables below, the AltConf column contains the number of residues with at least one atom in alternate conformation and the Trace column contains the number of residues modelled with at most 2 atoms.

- Molecule 1 is a protein called NA(+)/H(+) ANTIporter 1.

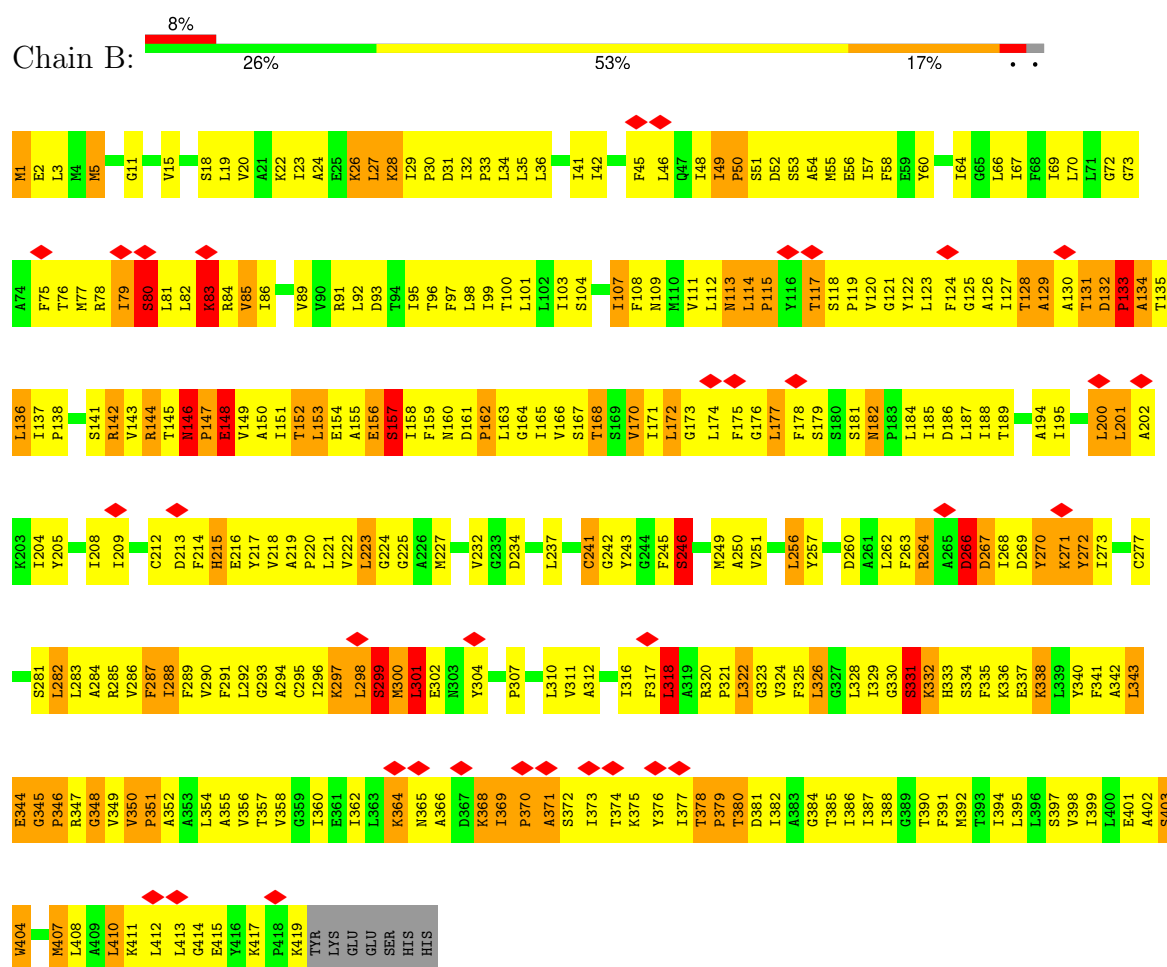
Mol	Chain	Residues	Atoms					AltConf	Trace
			Total	C	N	O	S		
1	B	419	3175	2129	479	551	16	0	0



### 3 Residue-property plots

These plots are drawn for all protein, RNA, DNA and oligosaccharide chains in the entry. The first graphic for a chain summarises the proportions of the various outlier classes displayed in the second graphic. The second graphic shows the sequence view annotated by issues in geometry and atom inclusion in map density. Residues are color-coded according to the number of geometric quality criteria for which they contain at least one outlier: green = 0, yellow = 1, orange = 2 and red = 3 or more. A red diamond above a residue indicates a poor fit to the EM map for this residue (all-atom inclusion < 40%). Stretches of 2 or more consecutive residues without any outlier are shown as a green connector. Residues present in the sample, but not in the model, are shown in grey.

#### • Molecule 1: NA(+)/H(+) ANTIPORTER 1





## 4 Experimental information

Property	Value	Source
EM reconstruction method	CRYSTALLOGRAPHY	Depositor
Imposed symmetry	2D CRYSTAL, $a$ =Not provided Å, $b$ =Not provided Å, $c$ =Not provided Å, $\gamma$ =Not provided°, space group=Not provided	Depositor
Number of images used	Not provided	
Resolution determination method	OTHER	Depositor
CTF correction method	Not provided	
Microscope	JEOL KYOTO-3000SFF	Depositor
Voltage (kV)	300	Depositor
Electron dose ( $e^-/\text{\AA}^2$ )	25	Depositor
Minimum defocus (nm)	120	Depositor
Maximum defocus (nm)	1800	Depositor
Magnification	60000	Depositor
Image detector	KODAK SO-163 FILM	Depositor
Maximum map value	361.103	Depositor
Minimum map value	-275.962	Depositor
Average map value	0.102	Depositor
Map value standard deviation	50.197	Depositor
Recommended contour level	1.8	Depositor
Map size (Å)	81.5, 103.30008, 200.0	wwPDB
Map dimensions	201, 82, 103	wwPDB
Map angles (°)	90.0, 90.0, 90.0	wwPDB
Pixel spacing (Å)	1.01875, 0.99327, 1.0	Depositor



## 5 Model quality

### 5.1 Standard geometry

The Z score for a bond length (or angle) is the number of standard deviations the observed value is removed from the expected value. A bond length (or angle) with  $|Z| > 5$  is considered an outlier worth inspection. RMSZ is the root-mean-square of all Z scores of the bond lengths (or angles).

Mol	Chain	Bond lengths		Bond angles	
		RMSZ	$\# Z  > 5$	RMSZ	$\# Z  > 5$
1	B	1.66	30/3232 (0.9%)	1.21	35/4382 (0.8%)

Chiral center outliers are detected by calculating the chiral volume of a chiral center and verifying if the center is modelled as a planar moiety or with the opposite hand. A planarity outlier is detected by checking planarity of atoms in a peptide group, atoms in a mainchain group or atoms of a sidechain that are expected to be planar.

Mol	Chain	#Chirality outliers	#Planarity outliers
1	B	0	3

All (30) bond length outliers are listed below:

Mol	Chain	Res	Type	Atoms	Z	Observed(Å)	Ideal(Å)
1	B	246	SER	C-N	-48.74	0.45	1.33
1	B	148	GLU	C-N	-29.14	0.67	1.34
1	B	83	LYS	C-N	27.12	1.96	1.34
1	B	215	HIS	C-N	-24.76	0.77	1.34
1	B	114	LEU	C-N	23.22	1.78	1.34
1	B	298	LEU	C-N	23.05	1.87	1.34
1	B	131	THR	C-N	21.86	1.84	1.34
1	B	331	SER	C-N	21.37	1.83	1.34
1	B	80	SER	C-N	-16.89	0.95	1.34
1	B	201	LEU	C-N	12.00	1.61	1.34
1	B	133	PRO	C-N	-11.77	1.06	1.34
1	B	299	SER	C-N	11.37	1.60	1.34
1	B	288	ILE	C-N	11.33	1.60	1.34
1	B	391	PHE	C-N	11.05	1.59	1.34
1	B	392	MET	C-N	-10.57	1.09	1.34
1	B	318	LEU	C-N	9.12	1.55	1.34
1	B	157	SER	C-N	-8.75	1.14	1.34
1	B	157	SER	CB-OG	-8.59	1.31	1.42
1	B	282	LEU	C-N	-8.25	1.15	1.34
1	B	188	ILE	C-N	8.07	1.52	1.34

*Continued on next page...*



*Continued from previous page...*

Mol	Chain	Res	Type	Atoms	Z	Observed(Å)	Ideal(Å)
1	B	157	SER	C-O	7.28	1.37	1.23
1	B	143	VAL	C-N	-6.38	1.19	1.34
1	B	195	ILE	C-N	6.38	1.48	1.34
1	B	223	LEU	C-N	-5.37	1.23	1.33
1	B	129	ALA	C-N	5.37	1.46	1.34
1	B	154	GLU	C-N	5.35	1.46	1.34
1	B	115	PRO	N-CD	5.25	1.55	1.47
1	B	379	PRO	N-CD	5.25	1.55	1.47
1	B	142	ARG	C-N	-5.18	1.22	1.34
1	B	162	PRO	N-CD	5.04	1.54	1.47

All (35) bond angle outliers are listed below:

Mol	Chain	Res	Type	Atoms	Z	Observed(°)	Ideal(°)
1	B	131	THR	O-C-N	25.89	164.13	122.70
1	B	80	SER	O-C-N	24.27	161.53	122.70
1	B	131	THR	CA-C-N	-19.06	75.27	117.20
1	B	131	THR	C-N-CA	-18.19	76.22	121.70
1	B	80	SER	CA-C-N	-18.15	77.28	117.20
1	B	83	LYS	O-C-N	-16.32	96.60	122.70
1	B	80	SER	C-N-CA	-15.34	83.36	121.70
1	B	299	SER	O-C-N	-14.45	99.58	122.70
1	B	246	SER	CA-C-N	-12.89	90.42	116.20
1	B	246	SER	C-N-CA	-12.78	95.47	122.30
1	B	133	PRO	CA-C-N	-10.11	94.96	117.20
1	B	392	MET	O-C-N	9.97	138.65	122.70
1	B	282	LEU	O-C-N	-9.30	107.81	122.70
1	B	392	MET	CA-C-N	-9.18	97.00	117.20
1	B	391	PHE	O-C-N	9.04	137.16	122.70
1	B	133	PRO	O-C-N	8.69	136.60	122.70
1	B	83	LYS	CA-C-N	8.65	136.24	117.20
1	B	392	MET	C-N-CA	-8.09	101.47	121.70
1	B	391	PHE	CA-C-N	-7.29	101.16	117.20
1	B	288	ILE	C-N-CA	-7.14	103.86	121.70
1	B	201	LEU	C-N-CA	-6.58	105.26	121.70
1	B	148	GLU	O-C-N	-6.54	112.24	122.70
1	B	148	GLU	C-N-CA	6.46	137.84	121.70
1	B	188	ILE	O-C-N	6.41	132.96	122.70
1	B	146	ASN	C-N-CD	6.31	141.66	128.40
1	B	182	ASN	C-N-CD	6.10	141.21	128.40
1	B	345	GLY	C-N-CD	6.07	141.15	128.40
1	B	49	ILE	C-N-CD	6.05	141.11	128.40

*Continued on next page...*



*Continued from previous page...*

Mol	Chain	Res	Type	Atoms	Z	Observed(°)	Ideal(°)
1	B	417	LYS	C-N-CD	6.04	141.09	128.40
1	B	369	ILE	C-N-CD	6.03	141.07	128.40
1	B	282	LEU	CA-C-N	5.97	130.33	117.20
1	B	301	LEU	O-C-N	-5.71	113.57	122.70
1	B	318	LEU	C-N-CA	-5.64	107.61	121.70
1	B	378	THR	C-N-CD	5.62	140.20	128.40
1	B	188	ILE	CA-C-N	-5.09	106.00	117.20

There are no chirality outliers.

All (3) planarity outliers are listed below:

Mol	Chain	Res	Type	Group
1	B	133	PRO	Mainchain
1	B	246	SER	Mainchain
1	B	299	SER	Mainchain

## 5.2 Too-close contacts ⓘ

In the following table, the Non-H and H(model) columns list the number of non-hydrogen atoms and hydrogen atoms in the chain respectively. The H(added) column lists the number of hydrogen atoms added and optimized by MolProbity. The Clashes column lists the number of clashes within the asymmetric unit, whereas Symm-Clashes lists symmetry-related clashes.

Mol	Chain	Non-H	H(model)	H(added)	Clashes	Symm-Clashes
1	B	3175	0	3364	903	43
All	All	3175	0	3364	903	43

The all-atom clashscore is defined as the number of clashes found per 1000 atoms (including hydrogen atoms). The all-atom clashscore for this structure is 138.

All (903) close contacts within the same asymmetric unit are listed below, sorted by their clash magnitude.

Atom-1	Atom-2	Interatomic distance (Å)	Clash overlap (Å)
1:B:135:THR:HG21	1:B:289:PHE:CZ	1.31	1.66
1:B:131:THR:CA	1:B:347:ARG:HB2	1.24	1.59
1:B:301:LEU:CD1	1:B:388:ILE:HD11	1.15	1.59
1:B:89:VAL:CG2	1:B:152:THR:HG22	1.20	1.57
1:B:89:VAL:HG22	1:B:152:THR:CG2	1.18	1.57
1:B:131:THR:HA	1:B:347:ARG:CB	1.32	1.55

*Continued on next page...*



*Continued from previous page...*

Atom-1	Atom-2	Interatomic distance (Å)	Clash overlap (Å)
1:B:173:GLY:HA2	1:B:177:LEU:CD2	1.09	1.53
1:B:332:LYS:HG3	1:B:333:HIS:CD2	1.44	1.52
1:B:320:ARG:CD	1:B:344:GLU:HB2	1.09	1.51
1:B:78:ARG:HD2	1:B:263:PHE:CD1	1.44	1.50
1:B:320:ARG:CD	1:B:344:GLU:CB	1.86	1.50
1:B:120:VAL:CA	1:B:175:PHE:HE2	1.05	1.46
1:B:320:ARG:NE	1:B:344:GLU:HB2	1.30	1.44
1:B:119:PRO:CB	1:B:175:PHE:HA	1.48	1.44
1:B:51:SER:CB	1:B:298:LEU:N	1.74	1.43
1:B:301:LEU:HD11	1:B:388:ILE:CD1	0.93	1.40
1:B:78:ARG:HD2	1:B:263:PHE:CG	1.58	1.39
1:B:114:LEU:C	1:B:115:PRO:N	1.78	1.37
1:B:78:ARG:NE	1:B:263:PHE:CE2	1.93	1.36
1:B:173:GLY:CA	1:B:177:LEU:CD2	2.02	1.36
1:B:85:VAL:CG2	1:B:148:GLU:HG3	1.29	1.35
1:B:51:SER:CB	1:B:298:LEU:H	1.34	1.33
1:B:153:LEU:HD11	1:B:340:TYR:CE2	1.62	1.33
1:B:89:VAL:CG2	1:B:152:THR:CG2	1.81	1.33
1:B:215:HIS:C	1:B:216:GLU:CA	1.95	1.33
1:B:120:VAL:HG11	1:B:382:ILE:CG1	1.44	1.32
1:B:131:THR:C	1:B:347:ARG:HB2	1.50	1.32
1:B:131:THR:C	1:B:132:ASP:N	1.84	1.31
1:B:347:ARG:HD3	1:B:351:PRO:CG	1.58	1.31
1:B:333:HIS:C	1:B:334:SER:HB3	1.50	1.31
1:B:301:LEU:CD1	1:B:388:ILE:CD1	1.81	1.31
1:B:331:SER:C	1:B:332:LYS:N	1.83	1.31
1:B:108:PHE:CD2	1:B:121:GLY:HA2	1.67	1.30
1:B:120:VAL:CG1	1:B:382:ILE:CG1	2.04	1.29
1:B:120:VAL:CG1	1:B:382:ILE:HG12	1.61	1.29
1:B:148:GLU:O	1:B:149:VAL:N	1.62	1.28
1:B:215:HIS:CA	1:B:216:GLU:N	1.95	1.28
1:B:320:ARG:HD3	1:B:344:GLU:CB	1.49	1.28
1:B:212:CYS:HB3	1:B:213:ASP:N	1.48	1.27
1:B:298:LEU:C	1:B:299:SER:N	1.87	1.27
1:B:148:GLU:C	1:B:149:VAL:CA	2.00	1.27
1:B:205:TYR:OH	1:B:221:LEU:HG	1.09	1.26
1:B:85:VAL:HG21	1:B:148:GLU:CG	1.65	1.26
1:B:79:ILE:O	1:B:81:LEU:N	1.69	1.24
1:B:131:THR:C	1:B:132:ASP:HA	1.57	1.24
1:B:131:THR:C	1:B:132:ASP:CA	2.06	1.24
1:B:148:GLU:CA	1:B:149:VAL:N	2.00	1.23

*Continued on next page...*



*Continued from previous page...*

Atom-1	Atom-2	Interatomic distance (Å)	Clash overlap (Å)
1:B:78:ARG:CZ	1:B:263:PHE:CZ	2.22	1.22
1:B:120:VAL:HA	1:B:175:PHE:CE2	1.35	1.22
1:B:205:TYR:CZ	1:B:221:LEU:HG	1.75	1.22
1:B:296:ILE:CG2	1:B:387:ILE:HD13	1.69	1.22
1:B:320:ARG:CG	1:B:344:GLU:HB2	1.70	1.22
1:B:158:ILE:O	1:B:162:PRO:HD3	1.36	1.22
1:B:343:LEU:O	1:B:344:GLU:O	1.55	1.22
1:B:133:PRO:HB3	1:B:157:SER:CB	1.69	1.21
1:B:153:LEU:HD21	1:B:340:TYR:OH	1.06	1.21
1:B:332:LYS:HG3	1:B:333:HIS:CG	1.66	1.20
1:B:407:MET:O	1:B:411:LYS:HB3	1.37	1.20
1:B:120:VAL:HG13	1:B:382:ILE:CG2	1.71	1.19
1:B:83:LYS:C	1:B:84:ARG:N	1.96	1.19
1:B:133:PRO:HG3	1:B:157:SER:HB2	1.19	1.19
1:B:120:VAL:CA	1:B:175:PHE:CE2	1.81	1.19
1:B:135:THR:CG2	1:B:289:PHE:CZ	2.24	1.18
1:B:89:VAL:HG22	1:B:152:THR:HG21	1.20	1.18
1:B:136:LEU:HD11	1:B:398:VAL:HG13	1.19	1.18
1:B:153:LEU:CD2	1:B:340:TYR:OH	1.92	1.17
1:B:78:ARG:CD	1:B:263:PHE:CG	2.27	1.17
1:B:114:LEU:CD2	1:B:377:ILE:HD12	1.74	1.16
1:B:335:PHE:CZ	1:B:415:GLU:OE2	1.98	1.16
1:B:133:PRO:HB3	1:B:157:SER:HB3	1.23	1.16
1:B:166:VAL:HG13	1:B:187:LEU:HD22	1.16	1.15
1:B:347:ARG:CD	1:B:351:PRO:HG2	1.74	1.15
1:B:214:PHE:HB3	1:B:217:TYR:HB2	1.17	1.15
1:B:332:LYS:CG	1:B:333:HIS:CD2	2.28	1.15
1:B:131:THR:CA	1:B:132:ASP:N	2.07	1.15
1:B:119:PRO:HB2	1:B:175:PHE:CG	1.82	1.15
1:B:119:PRO:CB	1:B:175:PHE:CA	2.24	1.14
1:B:215:HIS:O	1:B:216:GLU:N	1.80	1.14
1:B:162:PRO:HB3	1:B:249:MET:HE1	1.23	1.14
1:B:232:VAL:HG12	1:B:245:PHE:CE2	1.81	1.14
1:B:119:PRO:CG	1:B:175:PHE:HA	1.77	1.14
1:B:132:ASP:HB2	1:B:348:GLY:H	1.10	1.14
1:B:205:TYR:CE1	1:B:221:LEU:HD21	1.82	1.14
1:B:126:ALA:CB	1:B:171:ILE:HD11	1.76	1.13
1:B:133:PRO:CB	1:B:157:SER:HB3	1.77	1.13
1:B:173:GLY:HA2	1:B:177:LEU:HD23	1.14	1.13
1:B:132:ASP:HB2	1:B:348:GLY:N	1.62	1.13
1:B:335:PHE:HZ	1:B:415:GLU:OE2	1.28	1.13

*Continued on next page...*



*Continued from previous page...*

Atom-1	Atom-2	Interatomic distance (Å)	Clash overlap (Å)
1:B:287:PHE:CE1	1:B:291:PHE:CD2	2.37	1.12
1:B:119:PRO:CB	1:B:175:PHE:CG	2.32	1.12
1:B:83:LYS:O	1:B:86:ILE:CG2	1.97	1.12
1:B:232:VAL:HG12	1:B:245:PHE:HE2	1.05	1.12
1:B:292:LEU:O	1:B:295:CYS:SG	2.07	1.11
1:B:301:LEU:HD11	1:B:388:ILE:HD12	1.16	1.11
1:B:79:ILE:HG23	1:B:80:SER:N	1.65	1.10
1:B:131:THR:HA	1:B:347:ARG:HB3	1.28	1.10
1:B:300:MET:CB	1:B:301:LEU:HD13	1.71	1.10
1:B:320:ARG:NE	1:B:344:GLU:CB	2.04	1.10
1:B:162:PRO:HB3	1:B:249:MET:CE	1.81	1.10
1:B:242:GLY:N	1:B:243:TYR:N	2.00	1.10
1:B:32:ILE:HD11	1:B:136:LEU:HG	1.33	1.09
1:B:35:LEU:CD2	1:B:286:VAL:HG13	1.81	1.09
1:B:51:SER:HB3	1:B:298:LEU:H	1.01	1.09
1:B:78:ARG:NE	1:B:263:PHE:CZ	2.19	1.09
1:B:159:PHE:O	1:B:162:PRO:HD2	1.52	1.09
1:B:173:GLY:HA2	1:B:177:LEU:HD22	1.32	1.09
1:B:135:THR:HG21	1:B:289:PHE:CE2	1.87	1.09
1:B:205:TYR:OH	1:B:221:LEU:CG	2.01	1.09
1:B:214:PHE:CB	1:B:217:TYR:HB2	1.81	1.09
1:B:104:SER:HB3	1:B:125:GLY:HA2	1.25	1.08
1:B:340:TYR:O	1:B:343:LEU:HD11	1.53	1.08
1:B:120:VAL:HG13	1:B:382:ILE:HG23	1.35	1.08
1:B:296:ILE:HG22	1:B:387:ILE:CD1	1.83	1.08
1:B:237:LEU:HB3	1:B:243:TYR:O	1.54	1.07
1:B:66:LEU:CD1	1:B:349:VAL:HG12	1.84	1.07
1:B:51:SER:HB2	1:B:298:LEU:N	1.21	1.07
1:B:133:PRO:CB	1:B:157:SER:CB	2.31	1.07
1:B:332:LYS:CG	1:B:333:HIS:CG	2.36	1.07
1:B:108:PHE:CD2	1:B:124:PHE:HB3	1.89	1.07
1:B:173:GLY:HA2	1:B:177:LEU:HD21	1.12	1.07
1:B:296:ILE:HG21	1:B:387:ILE:HG21	1.35	1.07
1:B:347:ARG:HD3	1:B:351:PRO:CD	1.85	1.07
1:B:131:THR:CA	1:B:347:ARG:CB	2.03	1.06
1:B:287:PHE:HE1	1:B:291:PHE:CD2	1.72	1.06
1:B:331:SER:HB2	1:B:333:HIS:O	1.53	1.06
1:B:320:ARG:HB3	1:B:321:PRO:HD3	1.37	1.06
1:B:124:PHE:O	1:B:127:ILE:HG12	1.55	1.06
1:B:162:PRO:HA	1:B:249:MET:SD	1.94	1.06
1:B:114:LEU:HD21	1:B:377:ILE:HD12	1.11	1.05

*Continued on next page...*



*Continued from previous page...*

Atom-1	Atom-2	Interatomic distance (Å)	Clash overlap (Å)
1:B:133:PRO:HG3	1:B:157:SER:CB	1.84	1.05
1:B:132:ASP:HB2	1:B:347:ARG:HG2	1.35	1.05
1:B:78:ARG:CD	1:B:263:PHE:CD1	2.37	1.04
1:B:131:THR:HA	1:B:132:ASP:N	1.68	1.04
1:B:287:PHE:CE1	1:B:291:PHE:HD2	1.72	1.04
1:B:333:HIS:C	1:B:334:SER:CB	2.25	1.04
1:B:69:ILE:HD11	1:B:349:VAL:HG11	1.40	1.04
1:B:153:LEU:HD11	1:B:340:TYR:HE2	0.87	1.04
1:B:133:PRO:CG	1:B:157:SER:CB	2.35	1.03
1:B:78:ARG:NE	1:B:263:PHE:CD2	2.25	1.03
1:B:153:LEU:CD1	1:B:340:TYR:HE2	1.71	1.03
1:B:132:ASP:CB	1:B:347:ARG:HG2	1.89	1.03
1:B:108:PHE:HD2	1:B:121:GLY:HA2	1.00	1.02
1:B:153:LEU:HD21	1:B:340:TYR:CZ	1.94	1.02
1:B:50:PRO:HD2	1:B:53:SER:HB2	1.37	1.02
1:B:114:LEU:HD21	1:B:377:ILE:CD1	1.88	1.02
1:B:79:ILE:CG2	1:B:80:SER:H	1.70	1.02
1:B:89:VAL:HG21	1:B:152:THR:CG2	1.79	1.02
1:B:335:PHE:HZ	1:B:415:GLU:CD	1.62	1.02
1:B:300:MET:HB3	1:B:301:LEU:CD1	1.90	1.01
1:B:301:LEU:HD13	1:B:388:ILE:HD11	1.33	1.01
1:B:32:ILE:HD12	1:B:398:VAL:HG13	1.39	1.01
1:B:296:ILE:HG21	1:B:387:ILE:CG2	1.90	1.01
1:B:132:ASP:CB	1:B:348:GLY:H	1.73	1.00
1:B:200:LEU:O	1:B:204:ILE:HG12	1.58	1.00
1:B:75:PHE:CB	1:B:277:CYS:SG	2.50	1.00
1:B:333:HIS:HB2	1:B:334:SER:N	1.77	1.00
1:B:320:ARG:HG2	1:B:344:GLU:N	1.75	1.00
1:B:332:LYS:HB2	1:B:333:HIS:CG	1.95	1.00
1:B:119:PRO:HB2	1:B:175:PHE:HA	1.43	1.00
1:B:66:LEU:HD11	1:B:349:VAL:HG12	1.43	0.99
1:B:79:ILE:HG23	1:B:80:SER:H	0.85	0.99
1:B:320:ARG:HD3	1:B:344:GLU:HB3	1.42	0.99
1:B:320:ARG:NH2	1:B:344:GLU:OE1	1.95	0.99
1:B:347:ARG:HD3	1:B:351:PRO:HG2	1.00	0.99
1:B:374:THR:HG23	1:B:377:ILE:HG21	1.40	0.99
1:B:32:ILE:HD12	1:B:398:VAL:CG1	1.90	0.99
1:B:301:LEU:CD1	1:B:388:ILE:CG1	2.40	0.99
1:B:166:VAL:HG13	1:B:187:LEU:CD2	1.93	0.99
1:B:241:CYS:CB	1:B:243:TYR:HB3	1.91	0.99
1:B:119:PRO:HB3	1:B:175:PHE:CA	1.90	0.99

*Continued on next page...*



*Continued from previous page...*

Atom-1	Atom-2	Interatomic distance (Å)	Clash overlap (Å)
1:B:109:ASN:ND2	1:B:122:TYR:CE1	2.31	0.98
1:B:114:LEU:CD2	1:B:377:ILE:CD1	2.41	0.98
1:B:135:THR:CG2	1:B:289:PHE:CE2	2.44	0.98
1:B:109:ASN:OD1	1:B:121:GLY:HA3	1.63	0.98
1:B:135:THR:CG2	1:B:285:ARG:HH12	1.75	0.98
1:B:158:ILE:HG21	1:B:256:LEU:CD1	1.92	0.98
1:B:242:GLY:C	1:B:243:TYR:N	2.18	0.98
1:B:271:LYS:O	1:B:272:TYR:HB2	1.61	0.97
1:B:133:PRO:CG	1:B:157:SER:HB2	1.92	0.97
1:B:69:ILE:HD11	1:B:349:VAL:CG1	1.93	0.97
1:B:374:THR:O	1:B:379:PRO:HD3	1.64	0.97
1:B:241:CYS:HB3	1:B:243:TYR:HB3	1.47	0.96
1:B:104:SER:CB	1:B:125:GLY:HA2	1.94	0.96
1:B:377:ILE:HG13	1:B:378:THR:CA	1.95	0.96
1:B:89:VAL:HG21	1:B:152:THR:HG22	1.32	0.96
1:B:214:PHE:HB3	1:B:217:TYR:CB	1.95	0.96
1:B:345:GLY:O	1:B:397:SER:CB	2.14	0.96
1:B:300:MET:HB3	1:B:301:LEU:HD13	0.96	0.96
1:B:83:LYS:O	1:B:86:ILE:HG21	1.66	0.95
1:B:104:SER:CB	1:B:125:GLY:CA	2.43	0.95
1:B:92:LEU:CD1	1:B:341:PHE:CD2	2.47	0.95
1:B:126:ALA:HB3	1:B:171:ILE:HD11	1.42	0.95
1:B:115:PRO:HG2	1:B:118:SER:HB3	1.48	0.95
1:B:133:PRO:CG	1:B:157:SER:HB3	1.94	0.95
1:B:324:VAL:HG21	1:B:342:ALA:N	1.80	0.95
1:B:205:TYR:CZ	1:B:221:LEU:CG	2.50	0.95
1:B:109:ASN:ND2	1:B:122:TYR:HE1	1.65	0.94
1:B:160:ASN:O	1:B:163:LEU:N	1.98	0.94
1:B:126:ALA:HB3	1:B:171:ILE:CD1	1.97	0.94
1:B:320:ARG:NE	1:B:344:GLU:OE1	2.01	0.94
1:B:137:ILE:O	1:B:141:SER:OG	1.86	0.94
1:B:320:ARG:CG	1:B:344:GLU:CB	2.36	0.94
1:B:345:GLY:O	1:B:397:SER:HB2	1.67	0.93
1:B:333:HIS:CB	1:B:334:SER:N	2.31	0.93
1:B:296:ILE:HG22	1:B:387:ILE:HD13	0.92	0.92
1:B:78:ARG:CD	1:B:263:PHE:CD2	2.52	0.92
1:B:287:PHE:HE1	1:B:291:PHE:HD2	0.98	0.92
1:B:320:ARG:CZ	1:B:344:GLU:OE1	2.18	0.92
1:B:70:LEU:HD21	1:B:251:VAL:HG23	1.51	0.92
1:B:130:ALA:HB3	1:B:351:PRO:CG	2.00	0.92
1:B:70:LEU:CD2	1:B:251:VAL:HG23	1.99	0.92

*Continued on next page...*



*Continued from previous page...*

Atom-1	Atom-2	Interatomic distance (Å)	Clash overlap (Å)
1:B:35:LEU:HD21	1:B:286:VAL:HG22	1.50	0.92
1:B:79:ILE:O	1:B:81:LEU:CA	2.17	0.92
1:B:108:PHE:HD2	1:B:121:GLY:CA	1.82	0.91
1:B:119:PRO:HG3	1:B:174:LEU:O	1.70	0.91
1:B:332:LYS:CB	1:B:333:HIS:CG	2.53	0.91
1:B:205:TYR:CE1	1:B:221:LEU:CD2	2.53	0.91
1:B:301:LEU:HD12	1:B:388:ILE:HG13	1.52	0.91
1:B:126:ALA:HB1	1:B:171:ILE:HD11	1.50	0.90
1:B:153:LEU:CD1	1:B:340:TYR:CE2	2.49	0.90
1:B:166:VAL:CG1	1:B:187:LEU:HD22	2.00	0.90
1:B:158:ILE:O	1:B:162:PRO:CD	2.19	0.89
1:B:75:PHE:HB3	1:B:277:CYS:SG	2.13	0.89
1:B:104:SER:HB2	1:B:125:GLY:CA	2.03	0.89
1:B:379:PRO:O	1:B:382:ILE:N	2.06	0.89
1:B:332:LYS:HG3	1:B:333:HIS:HD2	1.29	0.89
1:B:135:THR:CG2	1:B:285:ARG:NH1	2.36	0.89
1:B:80:SER:N	1:B:260:ASP:OD1	2.02	0.89
1:B:104:SER:HB3	1:B:125:GLY:CA	2.03	0.89
1:B:119:PRO:HG2	1:B:175:PHE:HA	1.54	0.89
1:B:320:ARG:CZ	1:B:344:GLU:CD	2.41	0.89
1:B:241:CYS:HB3	1:B:243:TYR:CB	2.03	0.88
1:B:126:ALA:CB	1:B:171:ILE:CD1	2.51	0.88
1:B:153:LEU:HD21	1:B:340:TYR:HH	1.15	0.88
1:B:320:ARG:HG2	1:B:344:GLU:CB	2.02	0.88
1:B:232:VAL:CG1	1:B:245:PHE:HE2	1.86	0.88
1:B:158:ILE:HG21	1:B:256:LEU:HD12	1.53	0.88
1:B:212:CYS:CB	1:B:213:ASP:N	2.36	0.88
1:B:324:VAL:HG21	1:B:342:ALA:H	1.33	0.87
1:B:78:ARG:CZ	1:B:263:PHE:CE2	2.51	0.87
1:B:75:PHE:HB2	1:B:277:CYS:SG	2.14	0.87
1:B:320:ARG:HD3	1:B:344:GLU:CG	2.04	0.87
1:B:162:PRO:CA	1:B:249:MET:SD	2.62	0.87
1:B:376:TYR:C	1:B:378:THR:HG22	1.94	0.87
1:B:85:VAL:CG2	1:B:148:GLU:CG	2.18	0.87
1:B:145:THR:N	1:B:146:ASN:HA	1.87	0.86
1:B:320:ARG:NE	1:B:344:GLU:CG	2.37	0.86
1:B:301:LEU:HD11	1:B:388:ILE:CG1	1.99	0.86
1:B:320:ARG:HE	1:B:344:GLU:HB2	1.35	0.86
1:B:50:PRO:CD	1:B:53:SER:HB2	2.04	0.86
1:B:262:LEU:HB3	1:B:270:TYR:HE1	1.38	0.86
1:B:214:PHE:HD2	1:B:217:TYR:HB3	1.39	0.86

*Continued on next page...*



*Continued from previous page...*

Atom-1	Atom-2	Interatomic distance (Å)	Clash overlap (Å)
1:B:344:GLU:HG3	1:B:345:GLY:H	1.39	0.86
1:B:301:LEU:HD12	1:B:388:ILE:CG1	2.05	0.86
1:B:123:LEU:H	1:B:175:PHE:HZ	1.23	0.86
1:B:66:LEU:CD1	1:B:349:VAL:CG1	2.53	0.85
1:B:119:PRO:HB2	1:B:175:PHE:CD2	2.11	0.85
1:B:78:ARG:HD2	1:B:263:PHE:CE1	2.11	0.85
1:B:83:LYS:O	1:B:86:ILE:HG22	1.75	0.85
1:B:120:VAL:HG23	1:B:374:THR:HG21	1.57	0.85
1:B:285:ARG:NH2	1:B:289:PHE:HE2	1.74	0.85
1:B:377:ILE:HG13	1:B:378:THR:C	1.98	0.85
1:B:97:PHE:CE1	1:B:160:ASN:ND2	2.45	0.84
1:B:92:LEU:HD13	1:B:341:PHE:CD2	2.11	0.84
1:B:159:PHE:C	1:B:162:PRO:HD2	1.98	0.84
1:B:296:ILE:CG2	1:B:387:ILE:HG21	2.07	0.84
1:B:120:VAL:HG13	1:B:382:ILE:CG1	2.00	0.84
1:B:379:PRO:O	1:B:381:ASP:N	2.11	0.84
1:B:132:ASP:OD2	1:B:349:VAL:HB	1.76	0.84
1:B:142:ARG:NE	1:B:142:ARG:O	2.10	0.84
1:B:167:SER:O	1:B:170:VAL:HG23	1.77	0.84
1:B:93:ASP:OD2	1:B:156:GLU:HA	1.76	0.84
1:B:320:ARG:HG2	1:B:344:GLU:H	1.38	0.84
1:B:69:ILE:CD1	1:B:349:VAL:HG11	2.08	0.84
1:B:292:LEU:CD1	1:B:352:ALA:HB1	2.08	0.84
1:B:320:ARG:NE	1:B:344:GLU:CD	2.30	0.83
1:B:30:PRO:HG3	1:B:402:ALA:HB1	1.59	0.83
1:B:131:THR:C	1:B:347:ARG:CB	2.33	0.83
1:B:167:SER:O	1:B:171:ILE:HG13	1.78	0.82
1:B:32:ILE:HD12	1:B:136:LEU:CD1	2.08	0.82
1:B:130:ALA:CB	1:B:351:PRO:HG3	2.08	0.82
1:B:135:THR:HG22	1:B:285:ARG:HH12	1.43	0.82
1:B:215:HIS:C	1:B:216:GLU:N	0.77	0.82
1:B:328:LEU:HD22	1:B:338:LYS:HA	1.62	0.82
1:B:119:PRO:CB	1:B:175:PHE:CD1	2.63	0.82
1:B:130:ALA:HB3	1:B:351:PRO:HG2	1.60	0.82
1:B:172:LEU:O	1:B:177:LEU:HD22	1.79	0.82
1:B:70:LEU:CD2	1:B:251:VAL:CG2	2.57	0.82
1:B:119:PRO:HB3	1:B:175:PHE:CD1	2.15	0.81
1:B:232:VAL:CG1	1:B:245:PHE:CE2	2.62	0.81
1:B:32:ILE:HB	1:B:398:VAL:HG11	1.62	0.81
1:B:271:LYS:O	1:B:272:TYR:CB	2.28	0.81
1:B:108:PHE:CD2	1:B:124:PHE:CB	2.63	0.81

*Continued on next page...*



*Continued from previous page...*

Atom-1	Atom-2	Interatomic distance (Å)	Clash overlap (Å)
1:B:355:ALA:HB1	1:B:386:ILE:CG2	2.10	0.81
1:B:82:LEU:HA	1:B:151:ILE:HG12	1.60	0.81
1:B:374:THR:HG22	1:B:377:ILE:HG12	1.63	0.81
1:B:32:ILE:HD12	1:B:136:LEU:HD11	1.63	0.81
1:B:205:TYR:CZ	1:B:221:LEU:CD2	2.63	0.81
1:B:120:VAL:HG11	1:B:382:ILE:HG12	0.81	0.81
1:B:136:LEU:CD1	1:B:398:VAL:HG13	2.08	0.81
1:B:377:ILE:N	1:B:378:THR:HA	1.94	0.81
1:B:214:PHE:HD2	1:B:217:TYR:CB	1.93	0.80
1:B:78:ARG:HG2	1:B:263:PHE:CB	2.12	0.80
1:B:89:VAL:CG2	1:B:152:THR:HG23	2.05	0.80
1:B:119:PRO:CG	1:B:174:LEU:O	2.30	0.80
1:B:162:PRO:O	1:B:166:VAL:HG23	1.82	0.80
1:B:168:THR:CG2	1:B:354:LEU:HD13	2.12	0.79
1:B:173:GLY:CA	1:B:177:LEU:HD21	1.93	0.79
1:B:162:PRO:HB3	1:B:249:MET:SD	2.22	0.79
1:B:32:ILE:CB	1:B:398:VAL:HG11	2.13	0.79
1:B:320:ARG:CD	1:B:344:GLU:CG	2.60	0.79
1:B:147:PRO:O	1:B:149:VAL:HG23	1.81	0.79
1:B:58:PHE:CE2	1:B:292:LEU:HA	2.18	0.79
1:B:123:LEU:HD12	1:B:171:ILE:HD13	1.65	0.78
1:B:119:PRO:HD2	1:B:374:THR:OG1	1.83	0.78
1:B:166:VAL:O	1:B:170:VAL:HG22	1.82	0.78
1:B:173:GLY:CA	1:B:177:LEU:HD22	1.91	0.78
1:B:215:HIS:CB	1:B:216:GLU:N	2.46	0.78
1:B:287:PHE:CD1	1:B:291:PHE:CD2	2.70	0.78
1:B:93:ASP:CB	1:B:156:GLU:OE2	2.30	0.78
1:B:119:PRO:HB3	1:B:175:PHE:CG	2.16	0.78
1:B:162:PRO:CB	1:B:249:MET:SD	2.72	0.78
1:B:124:PHE:O	1:B:127:ILE:CG1	2.30	0.78
1:B:32:ILE:HG12	1:B:285:ARG:NH2	1.99	0.78
1:B:335:PHE:CZ	1:B:415:GLU:CD	2.48	0.78
1:B:32:ILE:CD1	1:B:136:LEU:HG	2.12	0.77
1:B:202:ALA:HB3	1:B:257:TYR:HD2	1.47	0.77
1:B:321:PRO:HA	1:B:342:ALA:HB2	1.64	0.77
1:B:89:VAL:CB	1:B:152:THR:HG22	2.12	0.77
1:B:114:LEU:HG	1:B:377:ILE:HB	1.66	0.77
1:B:130:ALA:HB3	1:B:351:PRO:HG3	1.64	0.77
1:B:320:ARG:HE	1:B:344:GLU:CB	1.91	0.77
1:B:119:PRO:HB3	1:B:175:PHE:N	1.99	0.77
1:B:158:ILE:HG21	1:B:256:LEU:HD11	1.64	0.77

*Continued on next page...*



*Continued from previous page...*

Atom-1	Atom-2	Interatomic distance (Å)	Clash overlap (Å)
1:B:135:THR:HG23	1:B:285:ARG:NH1	1.97	0.77
1:B:79:ILE:O	1:B:81:LEU:HB2	1.85	0.77
1:B:119:PRO:HB2	1:B:175:PHE:CB	2.14	0.77
1:B:114:LEU:CD2	1:B:377:ILE:HB	2.14	0.77
1:B:135:THR:HG21	1:B:289:PHE:HZ	0.96	0.77
1:B:162:PRO:CB	1:B:249:MET:CE	2.61	0.77
1:B:202:ALA:HB3	1:B:257:TYR:CD2	2.20	0.77
1:B:135:THR:CG2	1:B:289:PHE:HZ	1.80	0.76
1:B:376:TYR:O	1:B:378:THR:HG22	1.84	0.76
1:B:130:ALA:CB	1:B:351:PRO:CG	2.63	0.76
1:B:89:VAL:HG21	1:B:152:THR:HG23	1.64	0.76
1:B:133:PRO:HB3	1:B:157:SER:OG	1.86	0.76
1:B:182:ASN:OD1	1:B:185:ILE:HD13	1.86	0.76
1:B:214:PHE:CD2	1:B:217:TYR:CB	2.69	0.76
1:B:335:PHE:CZ	1:B:415:GLU:OE1	2.39	0.76
1:B:293:GLY:O	1:B:296:ILE:HG12	1.86	0.75
1:B:355:ALA:HB1	1:B:386:ILE:HG22	1.67	0.75
1:B:97:PHE:CD2	1:B:163:LEU:HD13	2.21	0.75
1:B:194:ALA:HB1	1:B:250:ALA:HA	1.67	0.75
1:B:135:THR:HG22	1:B:285:ARG:HH22	1.51	0.75
1:B:51:SER:HB2	1:B:298:LEU:CA	2.15	0.75
1:B:186:ASP:HA	1:B:189:THR:HG22	1.68	0.75
1:B:136:LEU:HD12	1:B:398:VAL:HG22	1.66	0.75
1:B:168:THR:HG21	1:B:354:LEU:HD22	1.66	0.75
1:B:120:VAL:CG2	1:B:374:THR:HG21	2.16	0.75
1:B:214:PHE:CD2	1:B:217:TYR:HB2	2.22	0.74
1:B:182:ASN:CG	1:B:185:ILE:HD13	2.05	0.74
1:B:194:ALA:HB1	1:B:250:ALA:CA	2.16	0.74
1:B:215:HIS:O	1:B:216:GLU:CA	2.24	0.74
1:B:93:ASP:HA	1:B:156:GLU:OE2	1.87	0.74
1:B:78:ARG:CG	1:B:263:PHE:CG	2.70	0.74
1:B:130:ALA:O	1:B:347:ARG:HB3	1.88	0.74
1:B:347:ARG:HD3	1:B:351:PRO:HD2	1.70	0.74
1:B:410:LEU:HD12	1:B:411:LYS:N	2.03	0.74
1:B:35:LEU:HD23	1:B:286:VAL:HG13	1.70	0.74
1:B:201:LEU:HD11	1:B:205:TYR:CE1	2.23	0.74
1:B:153:LEU:HD11	1:B:340:TYR:CZ	2.23	0.73
1:B:330:GLY:O	1:B:331:SER:O	2.05	0.73
1:B:335:PHE:CE2	1:B:415:GLU:OE2	2.42	0.73
1:B:27:LEU:HD22	1:B:29:ILE:CD1	2.19	0.73
1:B:120:VAL:C	1:B:175:PHE:CZ	2.61	0.73

*Continued on next page...*



*Continued from previous page...*

Atom-1	Atom-2	Interatomic distance (Å)	Clash overlap (Å)
1:B:79:ILE:O	1:B:81:LEU:CB	2.36	0.73
1:B:123:LEU:N	1:B:175:PHE:CZ	2.56	0.73
1:B:328:LEU:O	1:B:330:GLY:N	2.22	0.73
1:B:32:ILE:CD1	1:B:136:LEU:CD1	2.67	0.72
1:B:215:HIS:CE1	1:B:269:ASP:OD1	2.42	0.72
1:B:70:LEU:HD23	1:B:251:VAL:CG2	2.19	0.72
1:B:123:LEU:HD12	1:B:171:ILE:CD1	2.18	0.72
1:B:407:MET:O	1:B:411:LYS:CB	2.29	0.72
1:B:132:ASP:OD1	1:B:347:ARG:HG2	1.89	0.72
1:B:97:PHE:CD1	1:B:160:ASN:ND2	2.57	0.72
1:B:114:LEU:HD23	1:B:377:ILE:CD1	2.19	0.72
1:B:148:GLU:C	1:B:149:VAL:N	0.67	0.72
1:B:135:THR:O	1:B:285:ARG:NH1	2.22	0.72
1:B:205:TYR:HE2	1:B:222:VAL:HG12	1.55	0.72
1:B:292:LEU:HD11	1:B:352:ALA:HB1	1.71	0.72
1:B:379:PRO:HA	1:B:382:ILE:HG13	1.71	0.71
1:B:148:GLU:O	1:B:149:VAL:CA	2.23	0.71
1:B:237:LEU:HD22	1:B:245:PHE:CD2	2.25	0.71
1:B:324:VAL:CG2	1:B:342:ALA:N	2.53	0.71
1:B:123:LEU:HB2	1:B:175:PHE:CZ	2.26	0.71
1:B:127:ILE:O	1:B:347:ARG:NH2	2.23	0.71
1:B:69:ILE:CD1	1:B:349:VAL:CG1	2.68	0.71
1:B:93:ASP:HB2	1:B:156:GLU:OE2	1.89	0.71
1:B:135:THR:HG22	1:B:285:ARG:NH1	2.04	0.71
1:B:160:ASN:O	1:B:164:GLY:N	2.23	0.71
1:B:345:GLY:O	1:B:397:SER:OG	2.07	0.71
1:B:78:ARG:HG2	1:B:263:PHE:CG	2.26	0.70
1:B:97:PHE:CE2	1:B:163:LEU:HB3	2.25	0.70
1:B:132:ASP:CG	1:B:347:ARG:HG2	2.10	0.70
1:B:375:LYS:O	1:B:379:PRO:HD2	1.91	0.70
1:B:85:VAL:HG21	1:B:148:GLU:HG3	0.71	0.70
1:B:241:CYS:C	1:B:243:TYR:N	2.44	0.70
1:B:167:SER:HA	1:B:170:VAL:CG2	2.22	0.70
1:B:114:LEU:CG	1:B:377:ILE:HB	2.21	0.70
1:B:115:PRO:O	1:B:118:SER:OG	2.09	0.70
1:B:364:LYS:HG3	1:B:365:ASN:H	1.56	0.70
1:B:120:VAL:HG13	1:B:382:ILE:HG21	1.74	0.70
1:B:35:LEU:HD22	1:B:286:VAL:HA	1.73	0.70
1:B:66:LEU:HD11	1:B:349:VAL:CG1	2.21	0.69
1:B:269:ASP:C	1:B:270:TYR:N	2.45	0.69
1:B:127:ILE:HD13	1:B:386:ILE:HG13	1.73	0.69

*Continued on next page...*



*Continued from previous page...*

Atom-1	Atom-2	Interatomic distance (Å)	Clash overlap (Å)
1:B:145:THR:OG1	1:B:150:ALA:HB2	1.92	0.69
1:B:78:ARG:CD	1:B:263:PHE:CE1	2.72	0.69
1:B:35:LEU:HD13	1:B:289:PHE:HD2	1.58	0.69
1:B:99:ILE:O	1:B:103:ILE:HG13	1.90	0.69
1:B:120:VAL:HG13	1:B:382:ILE:CB	2.21	0.69
1:B:132:ASP:OD1	1:B:350:VAL:HG12	1.92	0.69
1:B:215:HIS:HE1	1:B:269:ASP:OD1	1.74	0.69
1:B:214:PHE:CG	1:B:217:TYR:HB2	2.27	0.69
1:B:55:MET:HE3	1:B:356:VAL:CG1	2.22	0.69
1:B:120:VAL:C	1:B:175:PHE:CE2	2.66	0.69
1:B:132:ASP:CB	1:B:347:ARG:CG	2.63	0.69
1:B:32:ILE:HD11	1:B:136:LEU:CG	2.16	0.69
1:B:394:ILE:O	1:B:398:VAL:HG23	1.92	0.69
1:B:23:ILE:O	1:B:27:LEU:HB2	1.93	0.68
1:B:262:LEU:HB3	1:B:270:TYR:CE1	2.24	0.68
1:B:377:ILE:HG13	1:B:378:THR:HA	1.73	0.68
1:B:119:PRO:CB	1:B:175:PHE:CB	2.70	0.68
1:B:335:PHE:O	1:B:336:LYS:HG2	1.94	0.68
1:B:31:ASP:OD2	1:B:285:ARG:NE	2.27	0.68
1:B:108:PHE:CE2	1:B:124:PHE:HB2	2.29	0.68
1:B:119:PRO:HB2	1:B:175:PHE:CA	2.07	0.68
1:B:298:LEU:C	1:B:298:LEU:HD13	2.14	0.68
1:B:234:ASP:OD1	1:B:246:SER:HA	1.94	0.68
1:B:168:THR:HG23	1:B:354:LEU:HD13	1.75	0.68
1:B:93:ASP:CA	1:B:156:GLU:OE2	2.42	0.67
1:B:335:PHE:HZ	1:B:415:GLU:OE1	1.72	0.67
1:B:32:ILE:HD12	1:B:398:VAL:HG11	1.76	0.67
1:B:35:LEU:HD22	1:B:286:VAL:HG13	1.76	0.67
1:B:346:PRO:HD2	1:B:347:ARG:H	1.59	0.67
1:B:292:LEU:HD13	1:B:352:ALA:HB1	1.76	0.67
1:B:135:THR:HG22	1:B:285:ARG:NH2	2.10	0.67
1:B:66:LEU:HD13	1:B:349:VAL:HG12	1.73	0.67
1:B:95:ILE:O	1:B:99:ILE:HG12	1.93	0.67
1:B:347:ARG:CD	1:B:351:PRO:CD	2.69	0.67
1:B:242:GLY:CA	1:B:243:TYR:N	2.57	0.67
1:B:112:LEU:HB3	1:B:114:LEU:HD13	1.77	0.66
1:B:109:ASN:HD22	1:B:122:TYR:HE1	1.38	0.66
1:B:347:ARG:CD	1:B:351:PRO:HD2	2.25	0.66
1:B:410:LEU:HD12	1:B:410:LEU:C	2.15	0.66
1:B:78:ARG:NH2	1:B:263:PHE:CZ	2.64	0.66
1:B:155:ALA:O	1:B:159:PHE:HB2	1.95	0.66

*Continued on next page...*



*Continued from previous page...*

Atom-1	Atom-2	Interatomic distance (Å)	Clash overlap (Å)
1:B:364:LYS:HG3	1:B:365:ASN:N	2.10	0.66
1:B:135:THR:CA	1:B:285:ARG:HH12	2.09	0.66
1:B:296:ILE:HG21	1:B:387:ILE:HG23	1.77	0.66
1:B:132:ASP:OD1	1:B:347:ARG:CG	2.44	0.66
1:B:137:ILE:HG21	1:B:153:LEU:HB3	1.77	0.66
1:B:35:LEU:CD2	1:B:286:VAL:CG1	2.68	0.66
1:B:35:LEU:HD21	1:B:286:VAL:HG13	1.77	0.65
1:B:370:PRO:O	1:B:372:SER:N	2.29	0.65
1:B:92:LEU:HD11	1:B:341:PHE:CD2	2.29	0.65
1:B:133:PRO:O	1:B:138:PRO:HD2	1.97	0.65
1:B:35:LEU:HD21	1:B:286:VAL:CG2	2.24	0.65
1:B:114:LEU:HD23	1:B:377:ILE:HD13	1.79	0.65
1:B:160:ASN:HA	1:B:163:LEU:HB2	1.78	0.65
1:B:214:PHE:C	1:B:217:TYR:H	2.00	0.65
1:B:382:ILE:O	1:B:386:ILE:HD13	1.97	0.65
1:B:108:PHE:HB2	1:B:124:PHE:CD1	2.32	0.64
1:B:31:ASP:OD1	1:B:31:ASP:N	2.28	0.64
1:B:104:SER:HB2	1:B:125:GLY:HA3	1.80	0.64
1:B:321:PRO:HA	1:B:342:ALA:CB	2.28	0.64
1:B:212:CYS:HB3	1:B:213:ASP:CA	2.25	0.64
1:B:205:TYR:HE2	1:B:222:VAL:CG1	2.10	0.64
1:B:144:ARG:NH2	1:B:144:ARG:HG3	2.11	0.64
1:B:108:PHE:CE2	1:B:124:PHE:CB	2.80	0.64
1:B:335:PHE:O	1:B:412:LEU:HD21	1.98	0.64
1:B:162:PRO:O	1:B:166:VAL:CG2	2.46	0.64
1:B:173:GLY:CA	1:B:177:LEU:HD23	1.95	0.63
1:B:320:ARG:HG2	1:B:344:GLU:CA	2.27	0.63
1:B:379:PRO:O	1:B:380:THR:C	2.36	0.63
1:B:160:ASN:C	1:B:163:LEU:H	2.01	0.63
1:B:27:LEU:HD23	1:B:29:ILE:HG12	1.78	0.63
1:B:108:PHE:O	1:B:112:LEU:HD23	1.97	0.63
1:B:347:ARG:NE	1:B:351:PRO:HG2	2.14	0.63
1:B:162:PRO:CB	1:B:249:MET:HE1	2.13	0.63
1:B:328:LEU:HD21	1:B:337:GLU:HG2	1.81	0.63
1:B:32:ILE:CD1	1:B:398:VAL:CG1	2.74	0.62
1:B:237:LEU:HD22	1:B:245:PHE:HD2	1.62	0.62
1:B:55:MET:HE2	1:B:360:ILE:CG2	2.30	0.62
1:B:89:VAL:HG22	1:B:152:THR:HG22	0.81	0.62
1:B:214:PHE:HB3	1:B:217:TYR:CA	2.30	0.62
1:B:271:LYS:O	1:B:272:TYR:CD1	2.52	0.62
1:B:36:LEU:HD13	1:B:395:LEU:HD13	1.82	0.62

*Continued on next page...*



*Continued from previous page...*

Atom-1	Atom-2	Interatomic distance (Å)	Clash overlap (Å)
1:B:108:PHE:CG	1:B:124:PHE:HB3	2.33	0.62
1:B:320:ARG:HD3	1:B:344:GLU:HG2	1.82	0.62
1:B:80:SER:CB	1:B:260:ASP:OD1	2.48	0.62
1:B:153:LEU:CG	1:B:340:TYR:OH	2.48	0.62
1:B:20:VAL:HG13	1:B:34:LEU:HD23	1.80	0.62
1:B:50:PRO:HD2	1:B:53:SER:CB	2.22	0.62
1:B:372:SER:O	1:B:373:ILE:HG13	2.00	0.62
1:B:132:ASP:CB	1:B:348:GLY:N	2.43	0.62
1:B:144:ARG:HG3	1:B:144:ARG:HH21	1.63	0.61
1:B:27:LEU:O	1:B:28:LYS:HB2	1.99	0.61
1:B:133:PRO:CD	1:B:157:SER:HB3	2.29	0.61
1:B:168:THR:HG21	1:B:354:LEU:CD2	2.30	0.61
1:B:241:CYS:CB	1:B:243:TYR:N	2.63	0.61
1:B:93:ASP:OD2	1:B:156:GLU:HG3	1.99	0.61
1:B:120:VAL:HA	1:B:175:PHE:HE2	0.45	0.61
1:B:370:PRO:C	1:B:372:SER:H	2.02	0.61
1:B:93:ASP:OD1	1:B:159:PHE:HB3	2.01	0.61
1:B:104:SER:HB2	1:B:125:GLY:C	2.21	0.61
1:B:374:THR:HG23	1:B:377:ILE:CG2	2.24	0.61
1:B:20:VAL:CG1	1:B:34:LEU:HD23	2.31	0.61
1:B:35:LEU:CD2	1:B:286:VAL:HA	2.30	0.61
1:B:48:ILE:C	1:B:49:ILE:HG13	2.19	0.61
1:B:114:LEU:HD21	1:B:377:ILE:HB	1.83	0.61
1:B:320:ARG:CG	1:B:344:GLU:H	2.11	0.61
1:B:172:LEU:O	1:B:176:GLY:O	2.17	0.61
1:B:79:ILE:HD12	1:B:256:LEU:CD2	2.31	0.61
1:B:114:LEU:HD11	1:B:377:ILE:O	2.01	0.61
1:B:320:ARG:CD	1:B:344:GLU:HB3	2.06	0.61
1:B:127:ILE:O	1:B:347:ARG:CZ	2.49	0.60
1:B:123:LEU:N	1:B:175:PHE:CE1	2.69	0.60
1:B:149:VAL:HA	1:B:152:THR:OG1	2.00	0.60
1:B:182:ASN:OD1	1:B:185:ILE:CD1	2.48	0.60
1:B:343:LEU:C	1:B:344:GLU:O	2.38	0.60
1:B:182:ASN:CG	1:B:185:ILE:CD1	2.55	0.60
1:B:320:ARG:HB3	1:B:321:PRO:CD	2.21	0.60
1:B:332:LYS:CB	1:B:333:HIS:CD2	2.80	0.60
1:B:78:ARG:NE	1:B:263:PHE:CE1	2.69	0.60
1:B:194:ALA:HB1	1:B:250:ALA:N	2.15	0.60
1:B:271:LYS:O	1:B:272:TYR:HD1	1.84	0.60
1:B:32:ILE:CG2	1:B:398:VAL:HG11	2.32	0.60
1:B:153:LEU:O	1:B:157:SER:OG	2.19	0.60

*Continued on next page...*



*Continued from previous page...*

Atom-1	Atom-2	Interatomic distance (Å)	Clash overlap (Å)
1:B:374:THR:O	1:B:374:THR:HG22	2.01	0.60
1:B:320:ARG:NH2	1:B:344:GLU:CD	2.52	0.60
1:B:390:THR:O	1:B:394:ILE:HG12	2.01	0.60
1:B:112:LEU:O	1:B:113:ASN:HB2	2.00	0.59
1:B:131:THR:C	1:B:347:ARG:CG	2.71	0.59
1:B:343:LEU:HD12	1:B:344:GLU:N	2.17	0.59
1:B:301:LEU:HD11	1:B:388:ILE:HD11	0.62	0.59
1:B:332:LYS:N	1:B:333:HIS:O	2.34	0.59
1:B:104:SER:HB3	1:B:128:THR:OG1	2.01	0.59
1:B:241:CYS:HB2	1:B:243:TYR:HB3	1.80	0.59
1:B:333:HIS:O	1:B:334:SER:HB3	1.98	0.59
1:B:32:ILE:CD1	1:B:398:VAL:HG11	2.32	0.59
1:B:374:THR:O	1:B:377:ILE:HG12	2.03	0.59
1:B:333:HIS:HB3	1:B:334:SER:N	2.17	0.59
1:B:78:ARG:HG2	1:B:263:PHE:HB2	1.85	0.59
1:B:213:ASP:C	1:B:214:PHE:N	2.56	0.59
1:B:186:ASP:HA	1:B:189:THR:CG2	2.33	0.58
1:B:267:ASP:OD1	1:B:268:ILE:N	2.37	0.58
1:B:335:PHE:O	1:B:412:LEU:CD2	2.50	0.58
1:B:366:ALA:HA	1:B:370:PRO:HB3	1.85	0.58
1:B:115:PRO:O	1:B:118:SER:CB	2.50	0.58
1:B:155:ALA:O	1:B:159:PHE:HD2	1.86	0.58
1:B:70:LEU:HD23	1:B:251:VAL:HG23	1.77	0.58
1:B:374:THR:HG22	1:B:377:ILE:CG1	2.33	0.58
1:B:73:GLY:O	1:B:76:THR:HG22	2.04	0.58
1:B:70:LEU:HD21	1:B:251:VAL:CG2	2.23	0.58
1:B:304:TYR:CE2	1:B:381:ASP:O	2.55	0.58
1:B:321:PRO:HG3	1:B:342:ALA:HB1	1.85	0.57
1:B:377:ILE:HD11	1:B:382:ILE:HD11	1.85	0.57
1:B:136:LEU:HD11	1:B:398:VAL:CG1	2.13	0.57
1:B:120:VAL:C	1:B:175:PHE:HZ	2.05	0.57
1:B:131:THR:HG21	1:B:344:GLU:OE2	2.05	0.57
1:B:304:TYR:CD2	1:B:381:ASP:O	2.58	0.57
1:B:335:PHE:H	1:B:338:LYS:CD	2.17	0.57
1:B:79:ILE:HD12	1:B:256:LEU:HD23	1.85	0.57
1:B:172:LEU:C	1:B:177:LEU:HD22	2.24	0.57
1:B:79:ILE:CG2	1:B:80:SER:N	2.41	0.57
1:B:333:HIS:C	1:B:334:SER:CA	2.72	0.57
1:B:123:LEU:HD21	1:B:358:VAL:HG11	1.86	0.57
1:B:155:ALA:O	1:B:159:PHE:CD2	2.58	0.57
1:B:335:PHE:H	1:B:338:LYS:HE2	1.70	0.57

*Continued on next page...*



*Continued from previous page...*

Atom-1	Atom-2	Interatomic distance (Å)	Clash overlap (Å)
1:B:36:LEU:HD13	1:B:395:LEU:CD1	2.35	0.56
1:B:399:ILE:O	1:B:403:SER:OG	2.23	0.56
1:B:137:ILE:CG2	1:B:153:LEU:HB3	2.34	0.56
1:B:202:ALA:CB	1:B:257:TYR:CD2	2.87	0.56
1:B:346:PRO:CD	1:B:347:ARG:H	2.18	0.56
1:B:55:MET:CE	1:B:356:VAL:CG1	2.83	0.56
1:B:119:PRO:CG	1:B:175:PHE:CA	2.69	0.56
1:B:26:LYS:O	1:B:26:LYS:HG2	2.06	0.56
1:B:304:TYR:CD2	1:B:385:THR:OG1	2.58	0.56
1:B:370:PRO:C	1:B:372:SER:N	2.59	0.56
1:B:166:VAL:CG1	1:B:187:LEU:CD2	2.72	0.56
1:B:32:ILE:HG21	1:B:398:VAL:HG21	1.88	0.56
1:B:126:ALA:HB3	1:B:171:ILE:HD13	1.84	0.56
1:B:347:ARG:CD	1:B:351:PRO:CG	2.49	0.56
1:B:155:ALA:HB1	1:B:159:PHE:CE2	2.41	0.56
1:B:160:ASN:O	1:B:163:LEU:CA	2.53	0.56
1:B:237:LEU:CD2	1:B:245:PHE:HD2	2.18	0.56
1:B:83:LYS:HA	1:B:86:ILE:HD13	1.87	0.55
1:B:307:PRO:O	1:B:311:VAL:HG23	2.07	0.55
1:B:332:LYS:HB2	1:B:333:HIS:ND1	2.20	0.55
1:B:355:ALA:HB1	1:B:386:ILE:HG21	1.86	0.55
1:B:135:THR:HG22	1:B:285:ARG:CZ	2.36	0.55
1:B:296:ILE:CG2	1:B:387:ILE:CG2	2.72	0.55
1:B:317:PHE:O	1:B:321:PRO:HG2	2.07	0.55
1:B:132:ASP:OD2	1:B:349:VAL:CB	2.50	0.55
1:B:348:GLY:HA3	1:B:394:ILE:HD11	1.88	0.55
1:B:32:ILE:HG12	1:B:285:ARG:HH22	1.71	0.55
1:B:214:PHE:CD2	1:B:217:TYR:HB3	2.29	0.55
1:B:27:LEU:CD2	1:B:29:ILE:HG12	2.37	0.55
1:B:54:ALA:C	1:B:295:CYS:HA	2.27	0.55
1:B:242:GLY:C	1:B:243:TYR:CA	2.74	0.55
1:B:144:ARG:HH21	1:B:144:ARG:CG	2.20	0.55
1:B:267:ASP:CG	1:B:268:ILE:H	2.09	0.54
1:B:80:SER:CA	1:B:260:ASP:OD1	2.55	0.54
1:B:213:ASP:C	1:B:214:PHE:HA	2.28	0.54
1:B:320:ARG:CG	1:B:344:GLU:HB3	2.31	0.54
1:B:408:LEU:HA	1:B:412:LEU:HD12	1.89	0.54
1:B:32:ILE:HG21	1:B:398:VAL:HG11	1.90	0.54
1:B:2:GLU:OE1	1:B:2:GLU:N	2.37	0.54
1:B:377:ILE:CD1	1:B:382:ILE:HD11	2.37	0.54
1:B:412:LEU:C	1:B:414:GLY:H	2.10	0.54

*Continued on next page...*



*Continued from previous page...*

Atom-1	Atom-2	Interatomic distance (Å)	Clash overlap (Å)
1:B:146:ASN:N	1:B:147:PRO:HD3	2.23	0.54
1:B:70:LEU:HD23	1:B:251:VAL:HG21	1.89	0.54
1:B:78:ARG:CG	1:B:263:PHE:CB	2.85	0.54
1:B:215:HIS:HB3	1:B:216:GLU:N	2.23	0.54
1:B:78:ARG:NH2	1:B:263:PHE:CE2	2.76	0.54
1:B:374:THR:CG2	1:B:377:ILE:HD13	2.38	0.54
1:B:30:PRO:HG3	1:B:402:ALA:CB	2.34	0.54
1:B:50:PRO:CG	1:B:53:SER:HB2	2.37	0.54
1:B:53:SER:O	1:B:57:ILE:HG13	2.08	0.54
1:B:78:ARG:CG	1:B:263:PHE:CD2	2.90	0.53
1:B:80:SER:OG	1:B:260:ASP:OD1	2.23	0.53
1:B:292:LEU:C	1:B:295:CYS:SG	2.85	0.53
1:B:89:VAL:CG1	1:B:152:THR:HG22	2.37	0.53
1:B:333:HIS:C	1:B:334:SER:N	2.62	0.53
1:B:375:LYS:O	1:B:378:THR:HB	2.08	0.53
1:B:177:LEU:HG	1:B:179:SER:O	2.09	0.53
1:B:27:LEU:HD22	1:B:29:ILE:HD13	1.90	0.53
1:B:32:ILE:CD1	1:B:136:LEU:CG	2.80	0.53
1:B:97:PHE:HE1	1:B:160:ASN:HD22	1.54	0.53
1:B:324:VAL:HG21	1:B:338:LYS:O	2.09	0.53
1:B:108:PHE:CE2	1:B:121:GLY:HA2	2.36	0.53
1:B:132:ASP:HB2	1:B:347:ARG:CG	2.08	0.53
1:B:372:SER:C	1:B:373:ILE:HG13	2.29	0.53
1:B:69:ILE:HD11	1:B:349:VAL:HG13	1.86	0.53
1:B:131:THR:CA	1:B:347:ARG:CG	2.83	0.53
1:B:92:LEU:HD11	1:B:341:PHE:CG	2.43	0.52
1:B:300:MET:CB	1:B:301:LEU:CD1	2.62	0.52
1:B:120:VAL:CG1	1:B:382:ILE:HG23	2.25	0.52
1:B:153:LEU:CD2	1:B:340:TYR:CZ	2.80	0.52
1:B:58:PHE:HE2	1:B:292:LEU:N	2.07	0.52
1:B:92:LEU:O	1:B:96:THR:HB	2.10	0.52
1:B:324:VAL:CG2	1:B:338:LYS:O	2.57	0.52
1:B:336:LYS:NZ	1:B:411:LYS:O	2.42	0.52
1:B:343:LEU:HB2	1:B:404:TRP:HZ2	1.75	0.52
1:B:27:LEU:CD2	1:B:29:ILE:CD1	2.86	0.52
1:B:96:THR:HG23	1:B:323:GLY:HA3	1.92	0.52
1:B:108:PHE:CD1	1:B:124:PHE:CG	2.98	0.52
1:B:365:ASN:OD1	1:B:368:LYS:HB3	2.10	0.52
1:B:364:LYS:CG	1:B:365:ASN:N	2.73	0.52
1:B:215:HIS:O	1:B:216:GLU:C	2.48	0.52
1:B:58:PHE:HE2	1:B:292:LEU:HA	1.74	0.52

*Continued on next page...*



*Continued from previous page...*

Atom-1	Atom-2	Interatomic distance (Å)	Clash overlap (Å)
1:B:149:VAL:HA	1:B:152:THR:HG1	1.75	0.52
1:B:205:TYR:CE2	1:B:222:VAL:HG12	2.42	0.52
1:B:262:LEU:C	1:B:270:TYR:CE1	2.81	0.51
1:B:96:THR:HG23	1:B:323:GLY:CA	2.41	0.51
1:B:119:PRO:CB	1:B:175:PHE:CD2	2.83	0.51
1:B:36:LEU:CD1	1:B:395:LEU:HD12	2.40	0.51
1:B:260:ASP:O	1:B:264:ARG:HB2	2.11	0.51
1:B:335:PHE:H	1:B:338:LYS:CE	2.23	0.51
1:B:83:LYS:HA	1:B:86:ILE:CD1	2.40	0.51
1:B:328:LEU:HD22	1:B:338:LYS:CA	2.38	0.51
1:B:78:ARG:CZ	1:B:263:PHE:CE1	2.90	0.51
1:B:108:PHE:CG	1:B:124:PHE:CD1	2.99	0.51
1:B:155:ALA:HB1	1:B:159:PHE:CD2	2.46	0.51
1:B:331:SER:C	1:B:332:LYS:CA	2.77	0.51
1:B:379:PRO:C	1:B:381:ASP:N	2.62	0.51
1:B:135:THR:HA	1:B:285:ARG:NH1	2.26	0.51
1:B:66:LEU:HD12	1:B:69:ILE:HD11	1.92	0.50
1:B:119:PRO:CA	1:B:175:PHE:CD1	2.90	0.50
1:B:178:PHE:CD1	1:B:179:SER:N	2.79	0.50
1:B:108:PHE:CG	1:B:124:PHE:CG	3.00	0.50
1:B:369:ILE:HG23	1:B:369:ILE:O	2.12	0.50
1:B:162:PRO:CG	1:B:249:MET:CE	2.89	0.50
1:B:133:PRO:CB	1:B:157:SER:HB2	2.24	0.50
1:B:159:PHE:O	1:B:163:LEU:HG	2.12	0.50
1:B:42:ILE:O	1:B:48:ILE:HB	2.12	0.50
1:B:167:SER:HA	1:B:170:VAL:HG23	1.94	0.50
1:B:42:ILE:HD11	1:B:290:VAL:HG11	1.94	0.49
1:B:158:ILE:CG2	1:B:256:LEU:HD12	2.34	0.49
1:B:410:LEU:CD1	1:B:411:LYS:N	2.74	0.49
1:B:27:LEU:CD2	1:B:29:ILE:HD13	2.42	0.49
1:B:109:ASN:ND2	1:B:122:TYR:CD1	2.68	0.49
1:B:318:LEU:O	1:B:322:LEU:HB2	2.13	0.49
1:B:374:THR:CG2	1:B:377:ILE:HG21	2.28	0.49
1:B:82:LEU:HD21	1:B:151:ILE:O	2.12	0.49
1:B:135:THR:CG2	1:B:285:ARG:CZ	2.90	0.49
1:B:162:PRO:HG3	1:B:249:MET:HE3	1.93	0.49
1:B:124:PHE:C	1:B:127:ILE:HG12	2.30	0.49
1:B:167:SER:C	1:B:170:VAL:HG23	2.33	0.49
1:B:241:CYS:CB	1:B:243:TYR:CB	2.72	0.49
1:B:58:PHE:CG	1:B:295:CYS:HB3	2.48	0.49
1:B:78:ARG:HG2	1:B:263:PHE:CD2	2.47	0.49

*Continued on next page...*



*Continued from previous page...*

Atom-1	Atom-2	Interatomic distance (Å)	Clash overlap (Å)
1:B:104:SER:CB	1:B:125:GLY:O	2.61	0.49
1:B:205:TYR:CE1	1:B:221:LEU:CG	2.92	0.49
1:B:107:ILE:O	1:B:111:VAL:HG23	2.13	0.49
1:B:131:THR:O	1:B:132:ASP:HA	2.06	0.49
1:B:285:ARG:NH2	1:B:289:PHE:CE2	2.66	0.49
1:B:78:ARG:CG	1:B:263:PHE:HB2	2.41	0.49
1:B:32:ILE:CD1	1:B:136:LEU:HD12	2.44	0.48
1:B:186:ASP:CA	1:B:189:THR:HG22	2.40	0.48
1:B:357:THR:O	1:B:360:ILE:HG13	2.14	0.48
1:B:377:ILE:N	1:B:378:THR:CA	2.73	0.48
1:B:93:ASP:OD2	1:B:156:GLU:CG	2.61	0.48
1:B:131:THR:C	1:B:347:ARG:HG3	2.33	0.48
1:B:58:PHE:HE2	1:B:292:LEU:CA	2.26	0.48
1:B:58:PHE:CD2	1:B:291:PHE:O	2.66	0.48
1:B:108:PHE:HB2	1:B:124:PHE:HD1	1.76	0.48
1:B:104:SER:C	1:B:125:GLY:HA3	2.33	0.48
1:B:58:PHE:CD2	1:B:295:CYS:HB3	2.48	0.48
1:B:300:MET:CG	1:B:301:LEU:HD13	2.39	0.48
1:B:104:SER:CB	1:B:125:GLY:HA3	2.34	0.48
1:B:322:LEU:O	1:B:326:LEU:HB2	2.14	0.48
1:B:93:ASP:O	1:B:97:PHE:HB2	2.14	0.48
1:B:284:ALA:O	1:B:288:ILE:HG13	2.14	0.48
1:B:377:ILE:HG13	1:B:378:THR:N	2.24	0.48
1:B:133:PRO:O	1:B:138:PRO:CD	2.63	0.47
1:B:343:LEU:O	1:B:344:GLU:C	2.41	0.47
1:B:30:PRO:O	1:B:33:PRO:HD2	2.15	0.47
1:B:50:PRO:HG2	1:B:53:SER:HB2	1.97	0.47
1:B:36:LEU:CD1	1:B:395:LEU:CD1	2.92	0.47
1:B:123:LEU:HA	1:B:171:ILE:HD13	1.95	0.47
1:B:209:ILE:HD11	1:B:218:VAL:CG2	2.45	0.47
1:B:287:PHE:O	1:B:291:PHE:HB2	2.14	0.47
1:B:69:ILE:HD13	1:B:288:ILE:HD12	1.95	0.47
1:B:158:ILE:CG2	1:B:256:LEU:CD1	2.80	0.47
1:B:215:HIS:C	1:B:216:GLU:C	2.71	0.47
1:B:35:LEU:HD21	1:B:286:VAL:CG1	2.43	0.47
1:B:51:SER:OG	1:B:296:ILE:O	2.26	0.47
1:B:343:LEU:CB	1:B:404:TRP:HZ2	2.28	0.47
1:B:78:ARG:HD2	1:B:270:TYR:CE2	2.35	0.47
1:B:89:VAL:CG2	1:B:152:THR:HG21	2.00	0.47
1:B:144:ARG:HB3	1:B:145:THR:N	2.30	0.47
1:B:151:ILE:HG23	1:B:152:THR:N	2.30	0.47

*Continued on next page...*



*Continued from previous page...*

Atom-1	Atom-2	Interatomic distance (Å)	Clash overlap (Å)
1:B:83:LYS:O	1:B:86:ILE:CB	2.62	0.47
1:B:119:PRO:HG2	1:B:175:PHE:CA	2.36	0.47
1:B:301:LEU:CD1	1:B:388:ILE:HG13	2.18	0.47
1:B:97:PHE:CD2	1:B:163:LEU:CD1	2.95	0.46
1:B:108:PHE:CG	1:B:124:PHE:CB	2.96	0.46
1:B:168:THR:HG21	1:B:354:LEU:HD13	1.93	0.46
1:B:374:THR:HA	1:B:377:ILE:HG23	1.97	0.46
1:B:2:GLU:HG2	1:B:5:MET:HB3	1.98	0.46
1:B:132:ASP:OD1	1:B:347:ARG:HG3	2.16	0.46
1:B:237:LEU:HD22	1:B:245:PHE:CE2	2.50	0.46
1:B:300:MET:N	1:B:301:LEU:HB2	1.80	0.46
1:B:144:ARG:CA	1:B:145:THR:N	2.78	0.46
1:B:209:ILE:HD11	1:B:218:VAL:HG21	1.97	0.46
1:B:316:ILE:O	1:B:321:PRO:HD3	2.15	0.46
1:B:340:TYR:HA	1:B:343:LEU:HD21	1.97	0.46
1:B:54:ALA:CB	1:B:294:ALA:HB1	2.46	0.46
1:B:58:PHE:CB	1:B:295:CYS:HB3	2.46	0.46
1:B:75:PHE:CG	1:B:277:CYS:SG	3.09	0.46
1:B:41:ILE:O	1:B:46:LEU:HB2	2.16	0.46
1:B:173:GLY:N	1:B:177:LEU:CD2	2.73	0.46
1:B:241:CYS:HB2	1:B:243:TYR:N	2.29	0.46
1:B:373:ILE:O	1:B:374:THR:HB	2.15	0.46
1:B:377:ILE:CG1	1:B:378:THR:HA	2.42	0.46
1:B:35:LEU:HD22	1:B:286:VAL:CA	2.43	0.46
1:B:72:GLY:HA3	1:B:281:SER:HB3	1.98	0.46
1:B:122:TYR:HB2	1:B:175:PHE:HE1	1.81	0.46
1:B:83:LYS:O	1:B:84:ARG:N	2.43	0.46
1:B:173:GLY:N	1:B:177:LEU:HD22	2.31	0.46
1:B:182:ASN:CG	1:B:185:ILE:HD12	2.33	0.46
1:B:135:THR:CA	1:B:285:ARG:NH1	2.79	0.46
1:B:153:LEU:CD2	1:B:340:TYR:HH	2.02	0.46
1:B:217:TYR:O	1:B:220:PRO:HD2	2.16	0.46
1:B:312:ALA:O	1:B:316:ILE:HG13	2.15	0.46
1:B:119:PRO:C	1:B:175:PHE:CG	2.72	0.45
1:B:127:ILE:HG13	1:B:128:THR:N	2.30	0.45
1:B:58:PHE:HD2	1:B:291:PHE:O	1.99	0.45
1:B:300:MET:SD	1:B:384:GLY:HA2	2.55	0.45
1:B:54:ALA:HB1	1:B:294:ALA:CB	2.42	0.45
1:B:69:ILE:CD1	1:B:349:VAL:HG13	2.46	0.45
1:B:161:ASP:O	1:B:165:ILE:HG13	2.16	0.45
1:B:55:MET:N	1:B:295:CYS:HA	2.32	0.45

*Continued on next page...*



*Continued from previous page...*

Atom-1	Atom-2	Interatomic distance (Å)	Clash overlap (Å)
1:B:137:ILE:HG12	1:B:153:LEU:HG	1.98	0.45
1:B:266:ASP:O	1:B:267:ASP:HB3	2.17	0.45
1:B:35:LEU:CD1	1:B:289:PHE:HD2	2.28	0.45
1:B:48:ILE:HG22	1:B:48:ILE:O	2.16	0.45
1:B:155:ALA:O	1:B:159:PHE:CB	2.62	0.45
1:B:285:ARG:HG3	1:B:286:VAL:N	2.31	0.45
1:B:104:SER:CB	1:B:125:GLY:C	2.84	0.45
1:B:148:GLU:O	1:B:151:ILE:HG22	2.16	0.45
1:B:118:SER:HA	1:B:119:PRO:HD3	1.43	0.45
1:B:395:LEU:O	1:B:399:ILE:HG13	2.17	0.45
1:B:32:ILE:HG12	1:B:285:ARG:HH21	1.76	0.45
1:B:136:LEU:CD1	1:B:398:VAL:HG22	2.42	0.45
1:B:344:GLU:HG3	1:B:345:GLY:N	2.19	0.45
1:B:173:GLY:C	1:B:177:LEU:CD2	2.80	0.44
1:B:320:ARG:CB	1:B:321:PRO:HD3	2.20	0.44
1:B:334:SER:O	1:B:335:PHE:CG	2.70	0.44
1:B:27:LEU:HD22	1:B:29:ILE:HD11	1.95	0.44
1:B:96:THR:O	1:B:100:THR:OG1	2.32	0.44
1:B:135:THR:CG2	1:B:289:PHE:HE2	2.18	0.44
1:B:219:ALA:HB3	1:B:220:PRO:HD3	1.99	0.44
1:B:135:THR:C	1:B:285:ARG:HH12	2.19	0.44
1:B:155:ALA:C	1:B:159:PHE:HD2	2.20	0.44
1:B:194:ALA:HA	1:B:250:ALA:HB2	1.99	0.44
1:B:133:PRO:O	1:B:134:ALA:C	2.55	0.44
1:B:335:PHE:O	1:B:335:PHE:CD1	2.70	0.44
1:B:355:ALA:CB	1:B:386:ILE:CG2	2.90	0.44
1:B:64:ILE:O	1:B:67:ILE:HG22	2.17	0.44
1:B:122:TYR:HB2	1:B:175:PHE:CE1	2.52	0.44
1:B:135:THR:HA	1:B:285:ARG:HH12	1.80	0.44
1:B:205:TYR:OH	1:B:221:LEU:CD1	2.64	0.44
1:B:205:TYR:HA	1:B:208:ILE:HG22	2.00	0.44
1:B:376:TYR:O	1:B:376:TYR:CG	2.70	0.44
1:B:377:ILE:HD11	1:B:382:ILE:CD1	2.48	0.44
1:B:104:SER:HB2	1:B:125:GLY:O	2.18	0.44
1:B:108:PHE:CD2	1:B:121:GLY:CA	2.61	0.44
1:B:125:GLY:O	1:B:128:THR:OG1	2.36	0.44
1:B:334:SER:O	1:B:335:PHE:CD2	2.71	0.44
1:B:35:LEU:HD21	1:B:286:VAL:CB	2.48	0.44
1:B:55:MET:SD	1:B:297:LYS:HG2	2.57	0.44
1:B:123:LEU:CB	1:B:175:PHE:CZ	2.96	0.44
1:B:104:SER:CB	1:B:128:THR:OG1	2.65	0.44

*Continued on next page...*



*Continued from previous page...*

Atom-1	Atom-2	Interatomic distance (Å)	Clash overlap (Å)
1:B:158:ILE:CG2	1:B:256:LEU:HD11	2.41	0.44
1:B:28:LYS:CE	1:B:28:LYS:HA	2.48	0.43
1:B:36:LEU:HD12	1:B:395:LEU:HD12	2.00	0.43
1:B:117:THR:O	1:B:118:SER:C	2.55	0.43
1:B:340:TYR:O	1:B:343:LEU:CD1	2.44	0.43
1:B:374:THR:CG2	1:B:377:ILE:CD1	2.96	0.43
1:B:58:PHE:CE2	1:B:292:LEU:CA	2.93	0.43
1:B:101:LEU:C	1:B:101:LEU:HD23	2.38	0.43
1:B:178:PHE:CG	1:B:179:SER:N	2.86	0.43
1:B:205:TYR:O	1:B:209:ILE:HG13	2.19	0.43
1:B:264:ARG:HD2	1:B:264:ARG:HA	1.60	0.43
1:B:362:ILE:O	1:B:366:ALA:HB2	2.18	0.43
1:B:32:ILE:HB	1:B:398:VAL:CG1	2.43	0.43
1:B:134:ALA:HA	1:B:138:PRO:HG2	2.00	0.43
1:B:55:MET:HE3	1:B:356:VAL:HG12	1.96	0.43
1:B:394:ILE:O	1:B:398:VAL:CG2	2.64	0.43
1:B:79:ILE:O	1:B:82:LEU:N	2.51	0.43
1:B:115:PRO:O	1:B:118:SER:HB3	2.17	0.43
1:B:177:LEU:HD12	1:B:179:SER:H	1.84	0.43
1:B:173:GLY:C	1:B:177:LEU:HD23	2.37	0.43
1:B:79:ILE:HD12	1:B:256:LEU:HD22	2.01	0.43
1:B:119:PRO:HB3	1:B:175:PHE:CB	2.40	0.43
1:B:162:PRO:HG3	1:B:249:MET:CE	2.49	0.43
1:B:91:ARG:HA	1:B:91:ARG:HD3	1.81	0.42
1:B:173:GLY:O	1:B:177:LEU:HD23	2.20	0.42
1:B:331:SER:CA	1:B:332:LYS:N	2.77	0.42
1:B:145:THR:HG22	1:B:147:PRO:HD2	2.02	0.42
1:B:146:ASN:N	1:B:147:PRO:CD	2.82	0.42
1:B:156:GLU:O	1:B:160:ASN:OD1	2.38	0.42
1:B:213:ASP:C	1:B:214:PHE:CA	2.88	0.42
1:B:335:PHE:N	1:B:338:LYS:CD	2.82	0.42
1:B:232:VAL:CG1	1:B:245:PHE:CZ	3.01	0.42
1:B:374:THR:CG2	1:B:377:ILE:HG12	2.42	0.42
1:B:267:ASP:CG	1:B:268:ILE:N	2.73	0.42
1:B:153:LEU:HD12	1:B:153:LEU:HA	1.83	0.42
1:B:93:ASP:OD2	1:B:156:GLU:OE2	2.38	0.41
1:B:114:LEU:HD21	1:B:377:ILE:CB	2.48	0.41
1:B:347:ARG:HH11	1:B:351:PRO:HB2	1.84	0.41
1:B:414:GLY:O	1:B:415:GLU:HG2	2.20	0.41
1:B:97:PHE:HD1	1:B:160:ASN:HD21	1.67	0.41
1:B:119:PRO:CA	1:B:175:PHE:CG	3.00	0.41

*Continued on next page...*



*Continued from previous page...*

Atom-1	Atom-2	Interatomic distance (Å)	Clash overlap (Å)
1:B:371:ALA:O	1:B:373:ILE:HG13	2.20	0.41
1:B:412:LEU:C	1:B:414:GLY:N	2.74	0.41
1:B:168:THR:HG21	1:B:354:LEU:CD1	2.49	0.41
1:B:144:ARG:HA	1:B:145:THR:N	2.36	0.41
1:B:332:LYS:CD	1:B:333:HIS:CD2	3.00	0.41
1:B:330:GLY:C	1:B:331:SER:O	2.59	0.41
1:B:410:LEU:CG	1:B:411:LYS:N	2.84	0.41
1:B:19:LEU:O	1:B:23:ILE:HG12	2.21	0.41
1:B:24:ALA:O	1:B:28:LYS:N	2.54	0.41
1:B:346:PRO:CD	1:B:347:ARG:N	2.82	0.41
1:B:350:VAL:O	1:B:352:ALA:N	2.53	0.41
1:B:374:THR:HG22	1:B:377:ILE:CD1	2.50	0.41
1:B:401:GLU:HA	1:B:404:TRP:NE1	2.36	0.41
1:B:27:LEU:HD23	1:B:29:ILE:CG1	2.46	0.41
1:B:101:LEU:HA	1:B:129:ALA:HB2	2.02	0.41
1:B:114:LEU:HD21	1:B:377:ILE:CG1	2.45	0.41
1:B:133:PRO:CG	1:B:134:ALA:N	2.78	0.41
1:B:133:PRO:C	1:B:135:THR:N	2.70	0.41
1:B:241:CYS:HB3	1:B:243:TYR:N	2.34	0.41
1:B:345:GLY:C	1:B:397:SER:HB2	2.38	0.41
1:B:214:PHE:CA	1:B:217:TYR:HB2	2.46	0.41
1:B:360:ILE:O	1:B:364:LYS:CG	2.69	0.41
1:B:51:SER:O	1:B:55:MET:HG3	2.21	0.40
1:B:168:THR:CG2	1:B:354:LEU:HD22	2.46	0.40
1:B:223:LEU:O	1:B:227:MET:HG3	2.21	0.40
1:B:282:LEU:O	1:B:283:LEU:C	2.55	0.40
1:B:177:LEU:HD13	1:B:177:LEU:HA	1.91	0.40
1:B:241:CYS:HB3	1:B:243:TYR:HB2	1.96	0.40
1:B:151:ILE:CG2	1:B:152:THR:N	2.84	0.40
1:B:332:LYS:HB2	1:B:333:HIS:CD2	2.44	0.40
1:B:335:PHE:CE1	1:B:415:GLU:OE1	2.74	0.40
1:B:335:PHE:C	1:B:336:LYS:HG2	2.41	0.40
1:B:27:LEU:CD2	1:B:29:ILE:CG1	3.00	0.40
1:B:51:SER:HA	1:B:296:ILE:O	2.22	0.40
1:B:374:THR:CG2	1:B:377:ILE:CG1	2.99	0.40
1:B:375:LYS:HA	1:B:379:PRO:HD3	2.03	0.40

All (43) symmetry-related close contacts are listed below. The label for Atom-2 includes the symmetry operator and encoded unit-cell translations to be applied.



Atom-1	Atom-2	Interatomic distance (Å)	Clash overlap (Å)
1:B:45:PHE:CD1	1:B:91:ARG:CZ[4_555]	0.47	1.73
1:B:83:LYS:CE	1:B:302:GLU:OE1[4_455]	0.69	1.51
1:B:45:PHE:CG	1:B:91:ARG:NH1[4_555]	0.88	1.32
1:B:45:PHE:CD2	1:B:91:ARG:NH1[4_555]	1.11	1.09
1:B:19:LEU:CD2	1:B:214:PHE:CZ[2_655]	1.19	1.01
1:B:45:PHE:CG	1:B:91:ARG:CZ[4_555]	1.19	1.01
1:B:45:PHE:CD1	1:B:91:ARG:NE[4_555]	1.21	0.99
1:B:22:LYS:CD	1:B:213:ASP:O[2_655]	1.37	0.83
1:B:45:PHE:CD1	1:B:91:ARG:NH2[4_555]	1.44	0.76
1:B:83:LYS:CE	1:B:302:GLU:CD[4_455]	1.49	0.71
1:B:45:PHE:CD1	1:B:91:ARG:NH1[4_555]	1.55	0.65
1:B:1:MET:SD	1:B:60:TYR:OH[2_655]	1.62	0.58
1:B:45:PHE:CG	1:B:91:ARG:NE[4_555]	1.64	0.56
1:B:45:PHE:CE1	1:B:91:ARG:CZ[4_555]	1.71	0.49
1:B:83:LYS:NZ	1:B:302:GLU:CG[4_455]	1.71	0.49
1:B:18:SER:OG	1:B:217:TYR:O[2_655]	1.73	0.47
1:B:83:LYS:CD	1:B:302:GLU:OE1[4_455]	1.74	0.46
1:B:22:LYS:CG	1:B:214:PHE:O[2_655]	1.77	0.43
1:B:1:MET:CE	1:B:60:TYR:CE1[2_655]	1.80	0.40
1:B:22:LYS:CD	1:B:213:ASP:C[2_655]	1.80	0.40
1:B:22:LYS:CG	1:B:214:PHE:CA[2_655]	1.81	0.39
1:B:83:LYS:NZ	1:B:302:GLU:OE1[4_455]	1.81	0.39
1:B:45:PHE:CE2	1:B:91:ARG:NH1[4_555]	1.84	0.36
1:B:45:PHE:CE1	1:B:91:ARG:NH2[4_555]	1.86	0.34
1:B:29:ILE:CG2	1:B:184:LEU:CD1[4_555]	1.90	0.30
1:B:45:PHE:CB	1:B:91:ARG:CD[4_555]	1.97	0.23
1:B:45:PHE:CG	1:B:91:ARG:CD[4_555]	1.97	0.23
1:B:45:PHE:CA	1:B:91:ARG:NE[4_555]	1.98	0.22
1:B:83:LYS:NZ	1:B:302:GLU:CD[4_455]	1.98	0.22
1:B:1:MET:SD	1:B:60:TYR:CZ[2_655]	1.99	0.21
1:B:22:LYS:CG	1:B:217:TYR:CD1[2_655]	1.99	0.21
1:B:22:LYS:CG	1:B:214:PHE:C[2_655]	2.00	0.20
1:B:22:LYS:CE	1:B:213:ASP:O[2_655]	2.02	0.18
1:B:22:LYS:NZ	1:B:213:ASP:O[2_655]	2.04	0.16
1:B:11:GLY:O	1:B:224:GLY:CA[2_655]	2.07	0.13
1:B:19:LEU:CD2	1:B:214:PHE:CE2[2_655]	2.07	0.13
1:B:45:PHE:CB	1:B:91:ARG:NE[4_555]	2.07	0.13
1:B:18:SER:CB	1:B:220:PRO:CB[2_655]	2.10	0.10
1:B:22:LYS:NZ	1:B:213:ASP:CB[2_655]	2.13	0.07
1:B:15:VAL:CG2	1:B:225:GLY:N[2_655]	2.14	0.06
1:B:19:LEU:CA	1:B:214:PHE:CE2[2_655]	2.14	0.06
1:B:22:LYS:CD	1:B:214:PHE:CA[2_655]	2.14	0.06

Continued on next page...



*Continued from previous page...*

Atom-1	Atom-2	Interatomic distance (Å)	Clash overlap (Å)
1:B:45:PHE:CE1	1:B:91:ARG:NH1[4_555]	2.14	0.06

## 5.3 Torsion angles [i](#)

### 5.3.1 Protein backbone [i](#)

In the following table, the Percentiles column shows the percent Ramachandran outliers of the chain as a percentile score with respect to all PDB entries followed by that with respect to all EM entries.

The Analysed column shows the number of residues for which the backbone conformation was analysed, and the total number of residues.

Mol	Chain	Analysed	Favoured	Allowed	Outliers	Percentiles	
1	B	402/426 (94%)	348 (87%)	30 (8%)	24 (6%)	<b>1</b>	<b>13</b>

All (24) Ramachandran outliers are listed below:

Mol	Chain	Res	Type
1	B	80	SER
1	B	272	TYR
1	B	299	SER
1	B	329	ILE
1	B	331	SER
1	B	344	GLU
1	B	371	ALA
1	B	380	THR
1	B	134	ALA
1	B	79	ILE
1	B	346	PRO
1	B	413	LEU
1	B	148	GLU
1	B	241	CYS
1	B	267	ASP
1	B	348	GLY
1	B	133	PRO
1	B	266	ASP
1	B	350	VAL
1	B	147	PRO
1	B	370	PRO
1	B	146	ASN

*Continued on next page...*



*Continued from previous page...*

Mol	Chain	Res	Type
1	B	50	PRO
1	B	351	PRO

### 5.3.2 Protein sidechains ⓘ

In the following table, the Percentiles column shows the percent sidechain outliers of the chain as a percentile score with respect to all PDB entries followed by that with respect to all EM entries.

The Analysed column shows the number of residues for which the sidechain conformation was analysed, and the total number of residues.

Mol	Chain	Analysed	Rotameric	Outliers	Percentiles
1	B	344/351 (98%)	288 (84%)	56 (16%)	<b>2</b> <b>10</b>

All (56) residues with a non-rotameric sidechain are listed below:

Mol	Chain	Res	Type
1	B	1	MET
1	B	3	LEU
1	B	5	MET
1	B	26	LYS
1	B	27	LEU
1	B	28	LYS
1	B	52	ASP
1	B	56	GLU
1	B	77	MET
1	B	80	SER
1	B	83	LYS
1	B	85	VAL
1	B	98	LEU
1	B	107	ILE
1	B	113	ASN
1	B	117	THR
1	B	128	THR
1	B	132	ASP
1	B	136	LEU
1	B	144	ARG
1	B	152	THR
1	B	153	LEU
1	B	156	GLU
1	B	157	SER

*Continued on next page...*



*Continued from previous page...*

Mol	Chain	Res	Type
1	B	168	THR
1	B	170	VAL
1	B	172	LEU
1	B	177	LEU
1	B	181	SER
1	B	200	LEU
1	B	256	LEU
1	B	264	ARG
1	B	266	ASP
1	B	270	TYR
1	B	271	LYS
1	B	273	ILE
1	B	287	PHE
1	B	297	LYS
1	B	300	MET
1	B	301	LEU
1	B	310	LEU
1	B	318	LEU
1	B	322	LEU
1	B	325	PHE
1	B	326	LEU
1	B	331	SER
1	B	332	LYS
1	B	338	LYS
1	B	343	LEU
1	B	364	LYS
1	B	368	LYS
1	B	403	SER
1	B	404	TRP
1	B	407	MET
1	B	410	LEU
1	B	419	LYS

Sometimes sidechains can be flipped to improve hydrogen bonding and reduce clashes. All (4) such sidechains are listed below:

Mol	Chain	Res	Type
1	B	113	ASN
1	B	160	ASN
1	B	215	HIS
1	B	333	HIS



### 5.3.3 RNA [i](#)

There are no RNA molecules in this entry.

## 5.4 Non-standard residues in protein, DNA, RNA chains [i](#)

There are no non-standard protein/DNA/RNA residues in this entry.

## 5.5 Carbohydrates [i](#)

There are no oligosaccharides in this entry.

## 5.6 Ligand geometry [i](#)

There are no ligands in this entry.

## 5.7 Other polymers [i](#)

There are no such residues in this entry.

## 5.8 Polymer linkage issues [i](#)

The following chains have linkage breaks:

Mol	Chain	Number of breaks
1	B	24

All chain breaks are listed below:

Model	Chain	Residue-1	Atom-1	Residue-2	Atom-2	Distance (Å)
1	B	212:CYS	C	213:ASP	N	3.74
1	B	214:PHE	C	215:HIS	N	3.23
1	B	144:ARG	C	145:THR	N	2.86
1	B	333:HIS	C	334:SER	N	2.62
1	B	213:ASP	C	214:PHE	N	2.56
1	B	269:ASP	C	270:TYR	N	2.45
1	B	332:LYS	C	333:HIS	N	2.35
1	B	242:GLY	C	243:TYR	N	2.18
1	B	300:MET	C	301:LEU	N	2.06
1	B	83:LYS	C	84:ARG	N	1.96
1	B	298:LEU	C	299:SER	N	1.87

*Continued on next page...*



*Continued from previous page...*

Model	Chain	Residue-1	Atom-1	Residue-2	Atom-2	Distance (Å)
1	B	131:THR	C	132:ASP	N	1.84
1	B	331:SER	C	332:LYS	N	1.83
1	B	114:LEU	C	115:PRO	N	1.78
1	B	201:LEU	C	202:ALA	N	1.61
1	B	143:VAL	C	144:ARG	N	1.19
1	B	282:LEU	C	283:LEU	N	1.15
1	B	157:SER	C	158:ILE	N	1.13
1	B	392:MET	C	393:THR	N	1.09
1	B	133:PRO	C	134:ALA	N	1.07
1	B	80:SER	C	81:LEU	N	0.95
1	B	215:HIS	C	216:GLU	N	0.77
1	B	148:GLU	C	149:VAL	N	0.67
1	B	246:SER	C	247:GLY	N	0.45



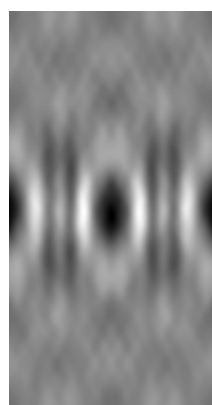
## 6 Map visualisation [i](#)

This section contains visualisations of the EMDB entry EMD-2636. These allow visual inspection of the internal detail of the map and identification of artifacts.

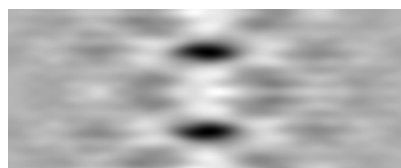
No raw map or half-maps were deposited for this entry and therefore no images, graphs, etc. pertaining to the raw map can be shown.

### 6.1 Orthogonal projections [i](#)

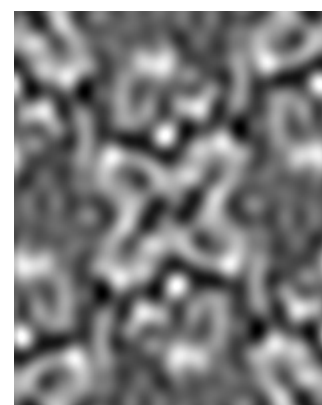
#### 6.1.1 Primary map



X



Y

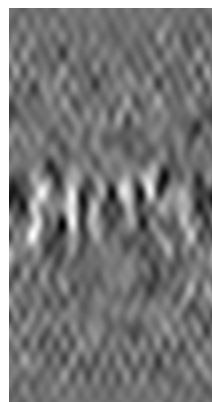


Z

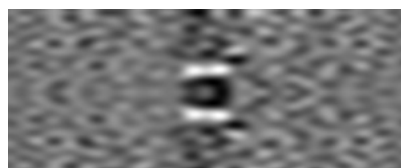
The images above show the map projected in three orthogonal directions.

### 6.2 Central slices [i](#)

#### 6.2.1 Primary map



X Index: 41



Y Index: 51



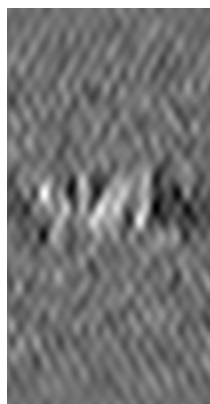
Z Index: 100



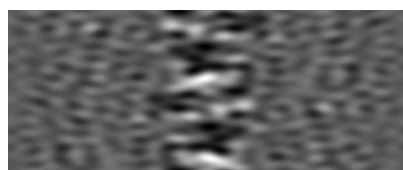
The images above show central slices of the map in three orthogonal directions.

## 6.3 Largest variance slices [i](#)

### 6.3.1 Primary map



X Index: 53



Y Index: 77

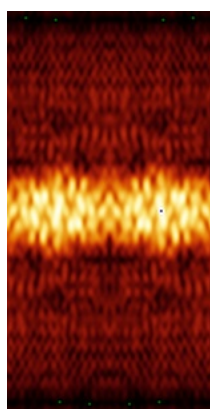


Z Index: 100

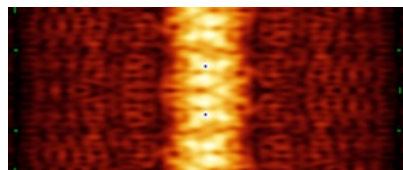
The images above show the largest variance slices of the map in three orthogonal directions.

## 6.4 Orthogonal standard-deviation projections (False-color) [i](#)

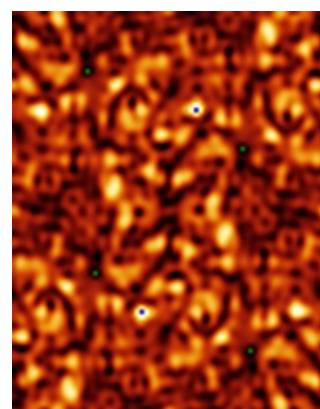
### 6.4.1 Primary map



X



Y



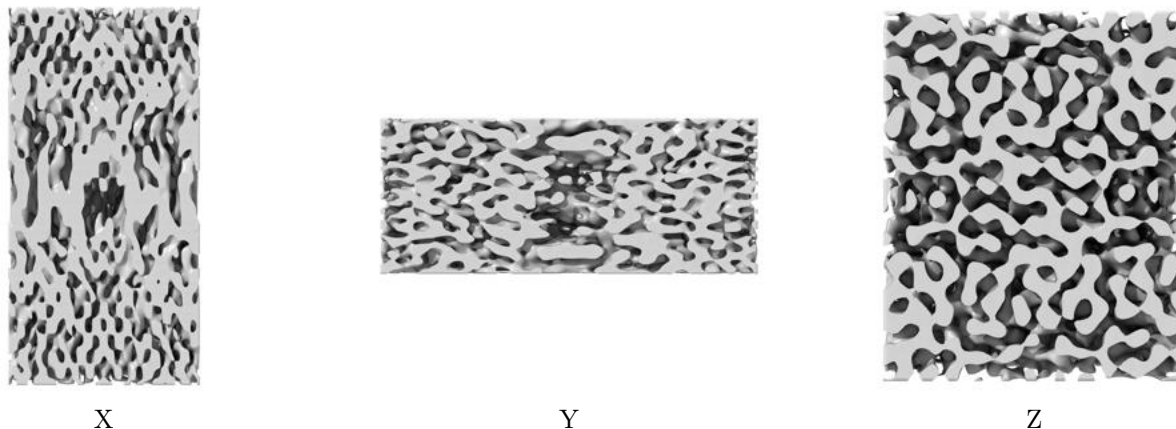
Z

The images above show the map standard deviation projections with false color in three orthogonal directions. Minimum values are shown in green, max in blue, and dark to light orange shades represent small to large values respectively.



## 6.5 Orthogonal surface views [i](#)

### 6.5.1 Primary map



The images above show the 3D surface view of the map at the recommended contour level 1.8. These images, in conjunction with the slice images, may facilitate assessment of whether an appropriate contour level has been provided.

## 6.6 Mask visualisation [i](#)

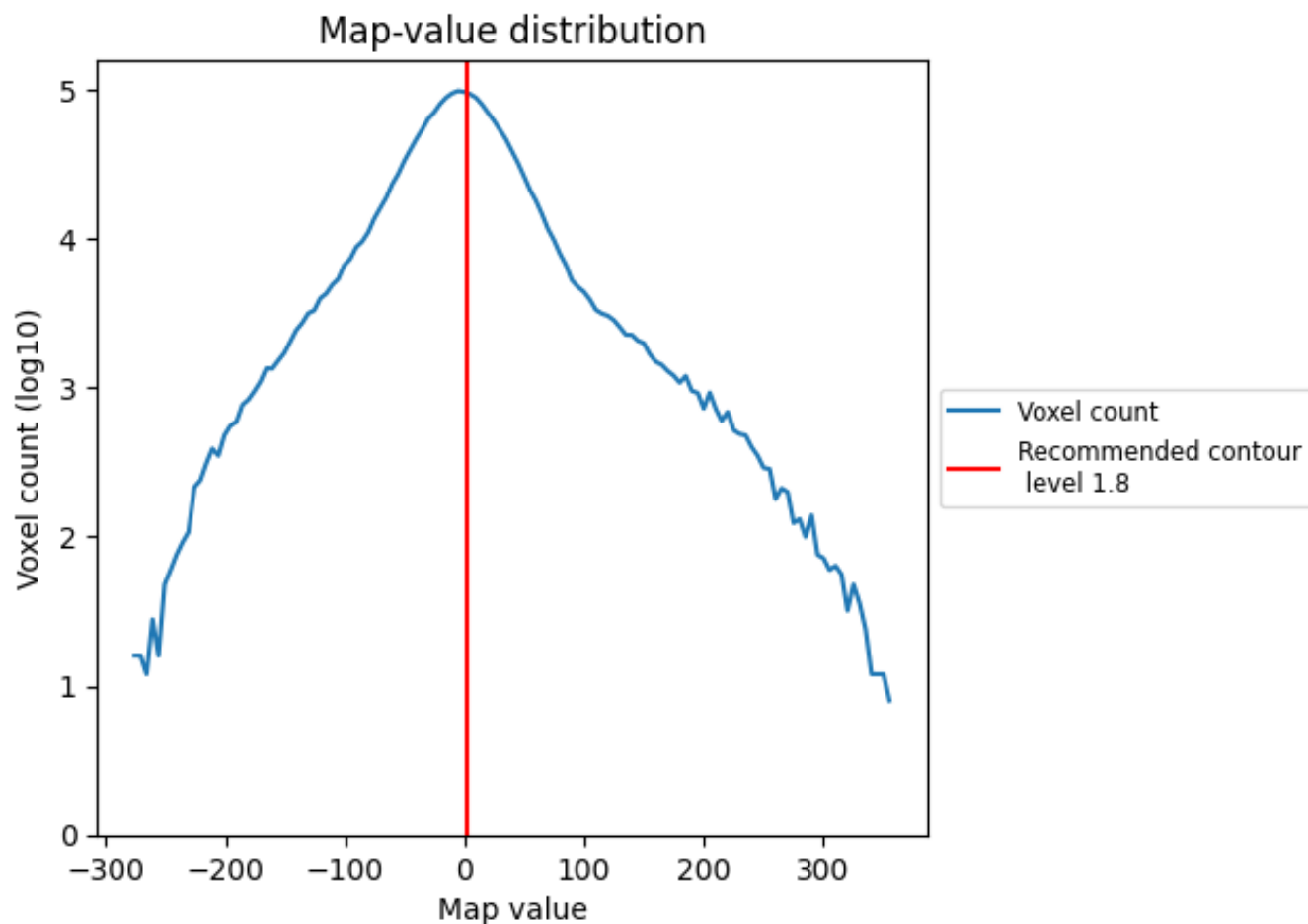
This section was not generated. No masks/segmentation were deposited.



## 7 Map analysis [i](#)

This section contains the results of statistical analysis of the map.

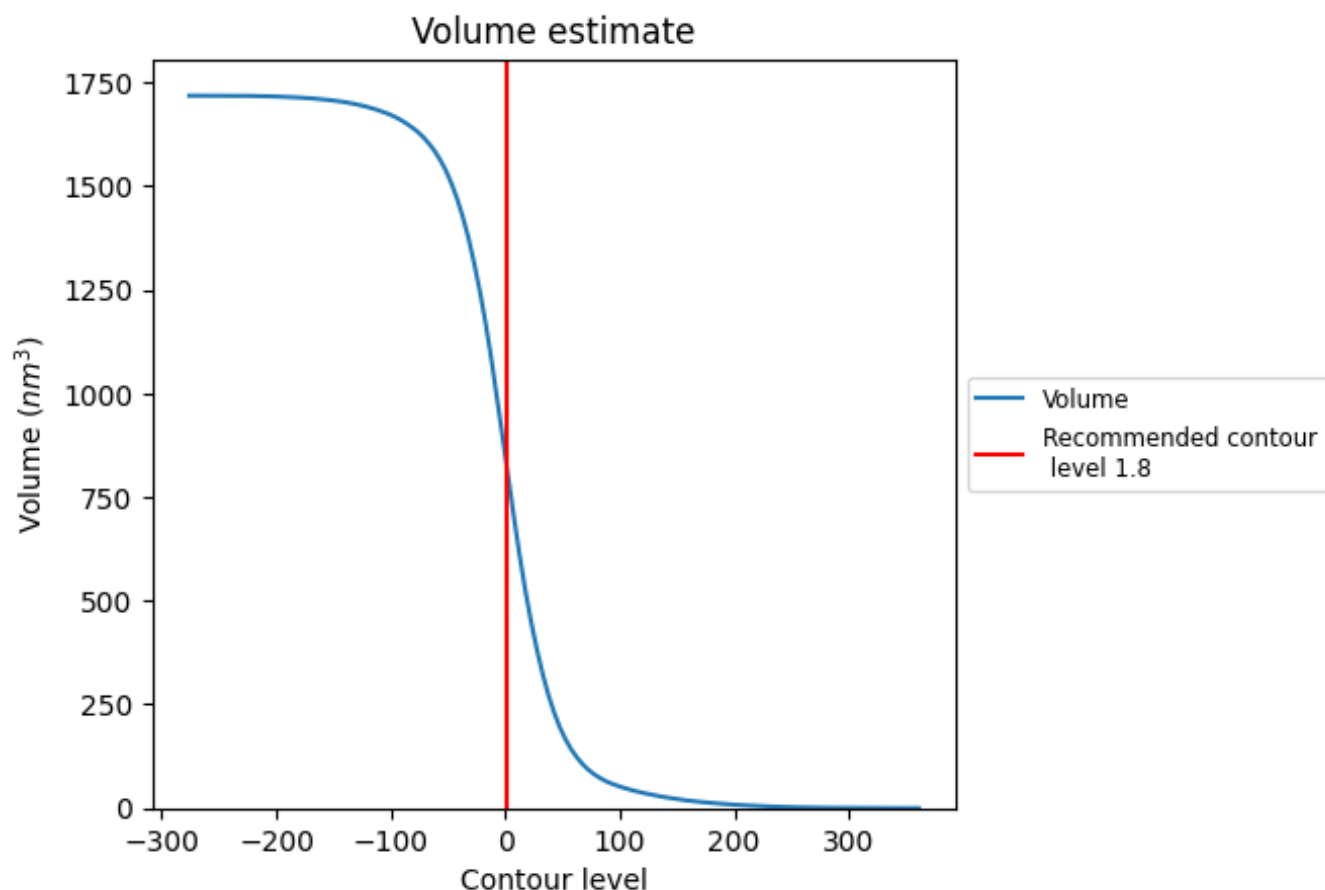
### 7.1 Map-value distribution [i](#)



The map-value distribution is plotted in 128 intervals along the x-axis. The y-axis is logarithmic. A spike in this graph at zero usually indicates that the volume has been masked.



## 7.2 Volume estimate [i](#)



The volume at the recommended contour level is 813 nm<sup>3</sup>; this corresponds to an approximate mass of 735 kDa.

The volume estimate graph shows how the enclosed volume varies with the contour level. The recommended contour level is shown as a vertical line and the intersection between the line and the curve gives the volume of the enclosed surface at the given level.

## 7.3 Rotationally averaged power spectrum [i](#)

This section was not generated. The rotationally averaged power spectrum is only generated for cubic maps.



## 8 Fourier-Shell correlation

This section was not generated. No FSC curve or half-maps provided.



## 9 Map-model fit [i](#)

This section contains information regarding the fit between EMDB map EMD-2636 and PDB model 4D0A. Per-residue inclusion information can be found in [section 3](#) on [page 4](#).

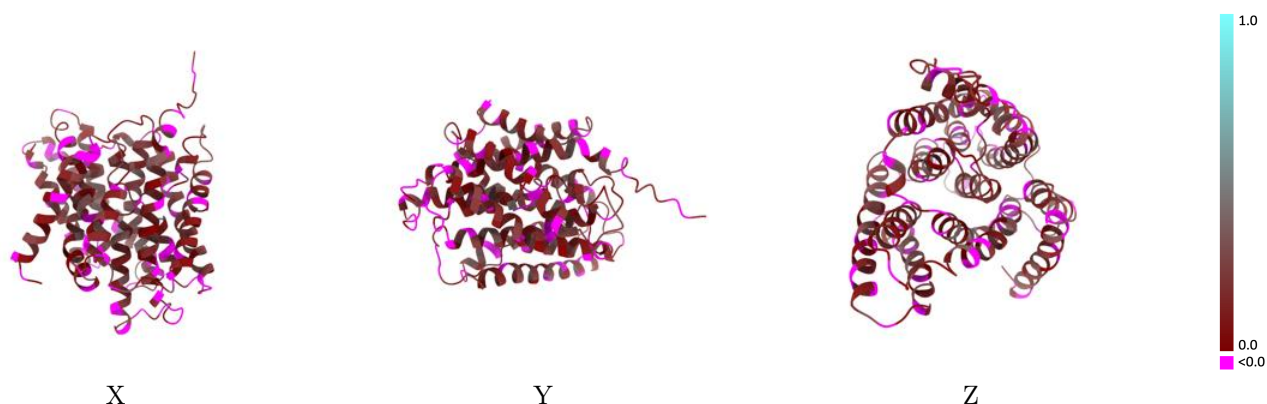
### 9.1 Map-model overlay [i](#)



The images above show the 3D surface view of the map at the recommended contour level 1.8 at 50% transparency in yellow overlaid with a ribbon representation of the model coloured in blue. These images allow for the visual assessment of the quality of fit between the atomic model and the map.

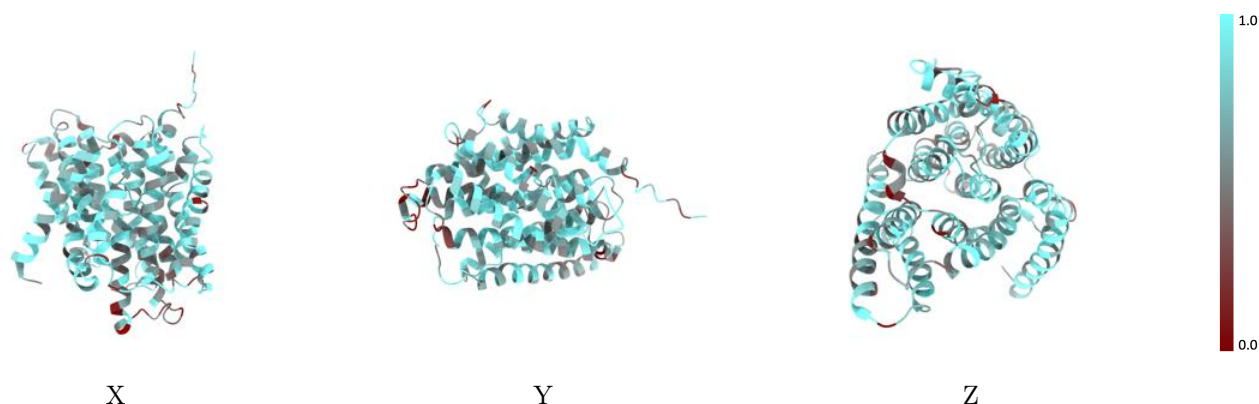


## 9.2 Q-score mapped to coordinate model [i](#)



The images above show the model with each residue coloured according to its Q-score. This shows their resolvability in the map with higher Q-score values reflecting better resolvability. Please note: Q-score is calculating the resolvability of atoms, and thus high values are only expected at resolutions at which atoms can be resolved. Low Q-score values may therefore be expected for many entries.

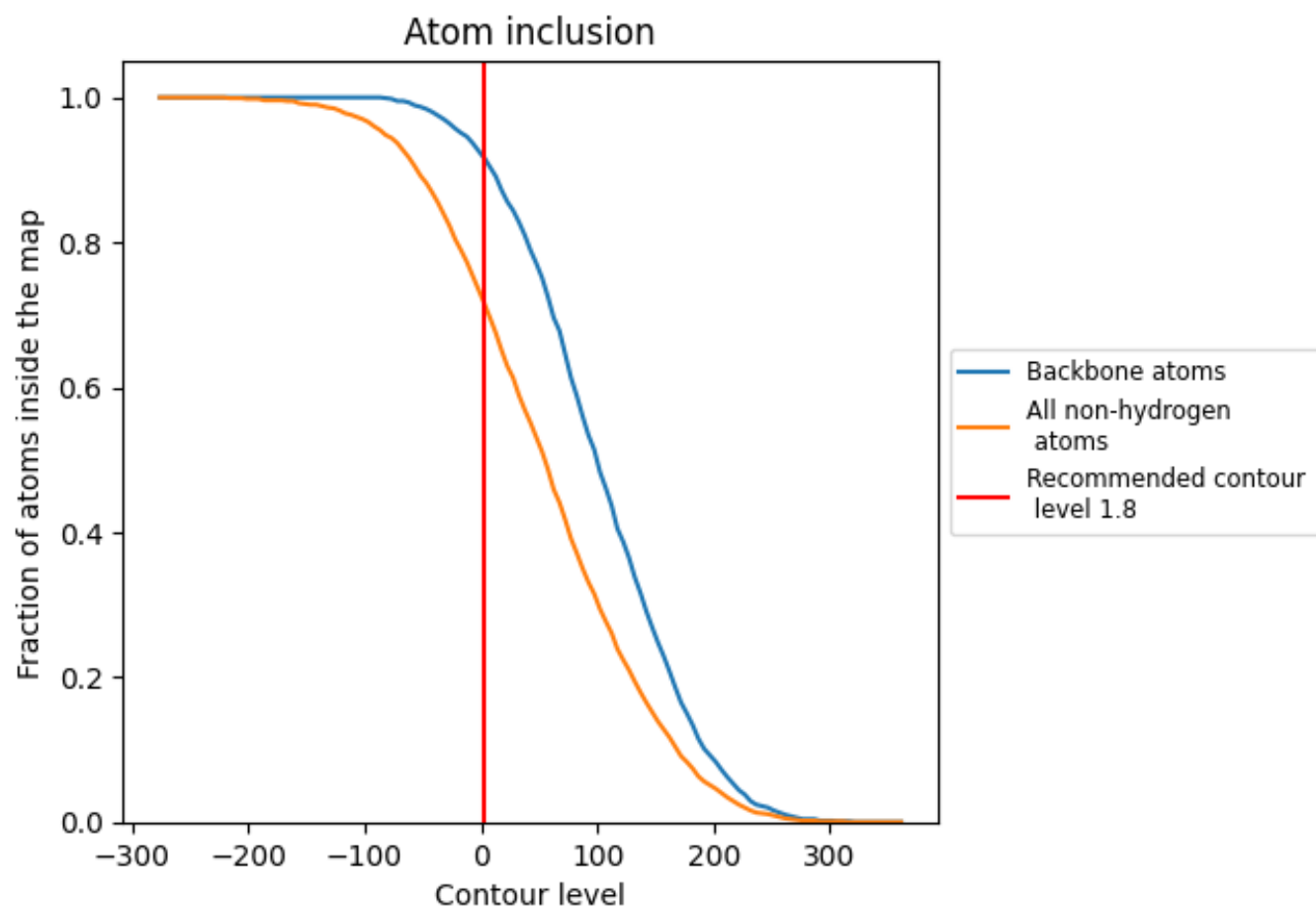
## 9.3 Atom inclusion mapped to coordinate model [i](#)



The images above show the model with each residue coloured according to its atom inclusion. This shows to what extent they are inside the map at the recommended contour level (1.8).



## 9.4 Atom inclusion [i](#)



At the recommended contour level, 92% of all backbone atoms, 72% of all non-hydrogen atoms, are inside the map.



9.5 Map-model fit summary ⓘ

The table lists the average atom inclusion at the recommended contour level (1.8) and Q-score for the entire model and for each chain.

Chain	Atom inclusion	Q-score
All	<div></div> 0.7190	<div></div> 0.1080
B	<div></div> 0.7190	<div></div> 0.1080

