



## Full wwPDB EM Validation Report ⓘ

Oct 13, 2024 – 09:13 PM EDT

PDB ID : 8CXG  
EMDB ID : EMD-27055  
Title : Structures of Zika Virus in Complex with Antibodies Targeting E Dimer Epitopes and Basis for Neutralization Efficacy  
Authors : Liu, W.; Zhang, X.K.; Gong, D.Y.; Dai, X.H.; Sharma, A.; Zhang, T.H.; Rey, F.; Zhou, Z.H.  
Deposited on : 2022-05-21  
Resolution : 3.20 Å(reported)

This is a Full wwPDB EM Validation Report for a publicly released PDB entry.

We welcome your comments at [validation@mail.wwpdb.org](mailto:validation@mail.wwpdb.org)

A user guide is available at

<https://www.wwpdb.org/validation/2017/EMValidationReportHelp>  
with specific help available everywhere you see the ⓘ symbol.

The types of validation reports are described at

<http://www.wwpdb.org/validation/2017/FAQs#types>.

---

The following versions of software and data (see [references ⓘ](#)) were used in the production of this report:

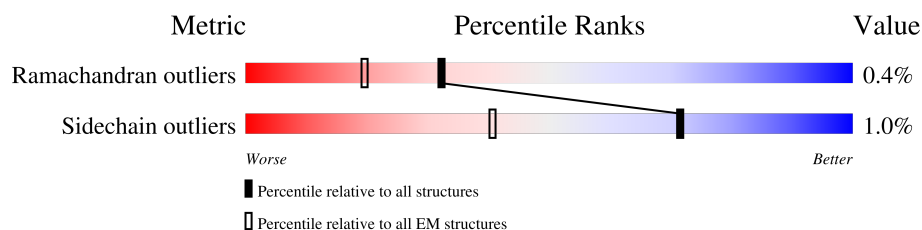
EMDB validation analysis : 0.0.1.dev113  
MolProbity : 4.02b-467  
Percentile statistics : 20231227.v01 (using entries in the PDB archive December 27th 2023)  
MapQ : 1.9.13  
Ideal geometry (proteins) : Engh & Huber (2001)  
Ideal geometry (DNA, RNA) : Parkinson et al. (1996)  
Validation Pipeline (wwPDB-VP) : 2.39

# 1 Overall quality at a glance

The following experimental techniques were used to determine the structure:  
*ELECTRON MICROSCOPY*

The reported resolution of this entry is 3.20 Å.

Percentile scores (ranging between 0-100) for global validation metrics of the entry are shown in the following graphic. The table shows the number of entries on which the scores are based.



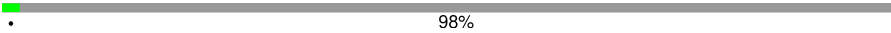
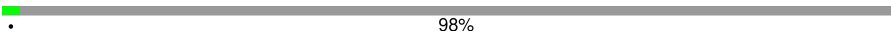
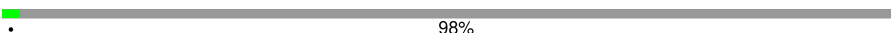
Metric	Whole archive (#Entries)	EM structures (#Entries)
Ramachandran outliers	207382	16835
Sidechain outliers	206894	16415

The table below summarises the geometric issues observed across the polymeric chains and their fit to the map. The red, orange, yellow and green segments of the bar indicate the fraction of residues that contain outliers for  $\geq 3$ , 2, 1 and 0 types of geometric quality criteria respectively. A grey segment represents the fraction of residues that are not modelled. The numeric value for each fraction is indicated below the corresponding segment, with a dot representing fractions  $\leq 5\%$ . The upper red bar (where present) indicates the fraction of residues that have poor fit to the EM map (all-atom inclusion  $< 40\%$ ). The numeric value is given above the bar.

Mol	Chain	Length	Quality of chain
1	1	122	<div> <div>99%</div> <div>99%</div> </div>
1	H	122	<div> <div>55%</div> <div>99%</div> </div>
1	h	122	<div> <div>56%</div> <div>99%</div> </div>
2	2	109	<div> <div>99%</div> <div>96%</div> </div>
2	L	109	<div> <div>55%</div> <div>98%</div> </div>
2	l	109	<div> <div>57%</div> <div>98%</div> </div>
3	A	639	<div> <div>75%</div> <div>23%</div> </div>
3	B	639	<div> <div>76%</div> <div>23%</div> </div>
3	C	639	<div> <div>78%</div> <div>22%</div> </div>

*Continued on next page...*

*Continued from previous page...*

Mol	Chain	Length	Quality of chain
4	D	3423	 98%
4	E	3423	 98%
4	F	3423	 98%

## 2 Entry composition [i](#)

There are 4 unique types of molecules in this entry. The entry contains 18381 atoms, of which 0 are hydrogens and 0 are deuteriums.

In the tables below, the AltConf column contains the number of residues with at least one atom in alternate conformation and the Trace column contains the number of residues modelled with at most 2 atoms.

- Molecule 1 is a protein called C8 scFv heavy chain.

Mol	Chain	Residues	Atoms					AltConf	Trace
1	H	121	Total	C	N	O	S	0	0
			933	591	151	186	5		
1	h	121	Total	C	N	O	S	0	0
			933	591	151	186	5		
1	1	121	Total	C	N	O	S	0	0
			933	591	151	186	5		

- Molecule 2 is a protein called C8 scFv light chain.

Mol	Chain	Residues	Atoms					AltConf	Trace
2	L	109	Total	C	N	O	S	0	0
			852	541	145	164	2		
2	1	109	Total	C	N	O	S	0	0
			852	541	145	164	2		
2	2	108	Total	C	N	O	S	0	0
			846	538	144	162	2		

- Molecule 3 is a protein called Ankyrin repeat family A protein 2,Envelope E protein.

Mol	Chain	Residues	Atoms					AltConf	Trace
3	A	492	Total	C	N	O	S	0	0
			3721	2343	645	703	30		
3	B	492	Total	C	N	O	S	0	0
			3721	2343	645	703	30		
3	C	501	Total	C	N	O	S	0	0
			3790	2384	657	718	31		

- Molecule 4 is a protein called Membrane M protein.

Mol	Chain	Residues	Atoms					AltConf	Trace
4	D	75	Total	C	N	O	S	0	0
			600	391	105	103	1		

*Continued on next page...*

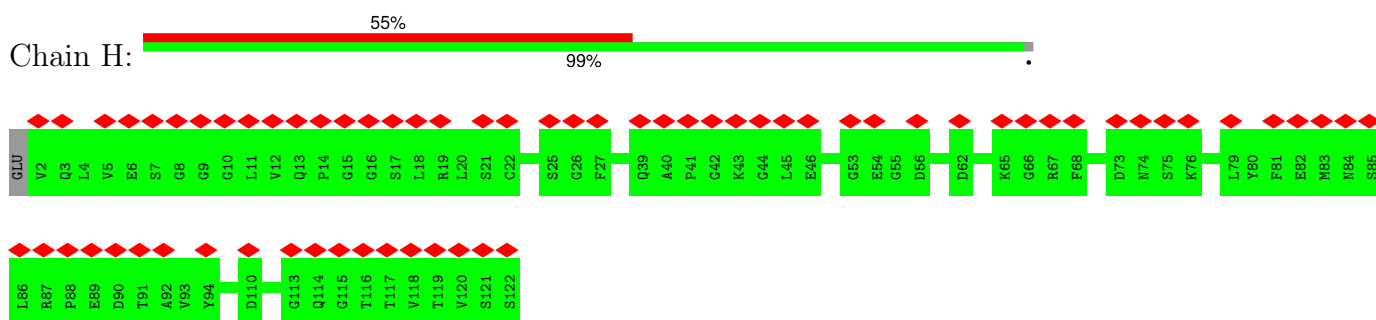
*Continued from previous page...*

Mol	Chain	Residues	Atoms					AltConf	Trace
4	E	75	Total	C	N	O	S	0	0
			600	391	105	103	1		
4	F	75	Total	C	N	O	S	0	0
			600	391	105	103	1		

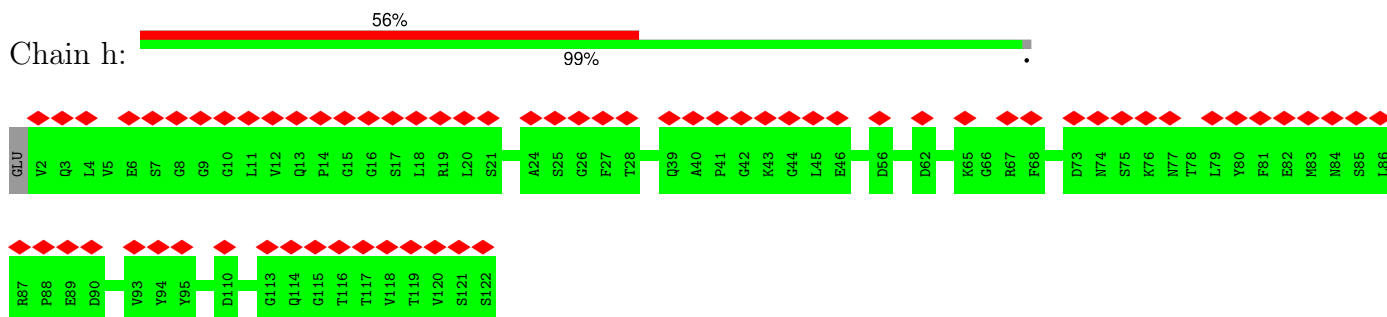
### 3 Residue-property plots [i](#)

These plots are drawn for all protein, RNA, DNA and oligosaccharide chains in the entry. The first graphic for a chain summarises the proportions of the various outlier classes displayed in the second graphic. The second graphic shows the sequence view annotated by issues in geometry and atom inclusion in map density. Residues are color-coded according to the number of geometric quality criteria for which they contain at least one outlier: green = 0, yellow = 1, orange = 2 and red = 3 or more. A red diamond above a residue indicates a poor fit to the EM map for this residue (all-atom inclusion < 40%). Stretches of 2 or more consecutive residues without any outlier are shown as a green connector. Residues present in the sample, but not in the model, are shown in grey.

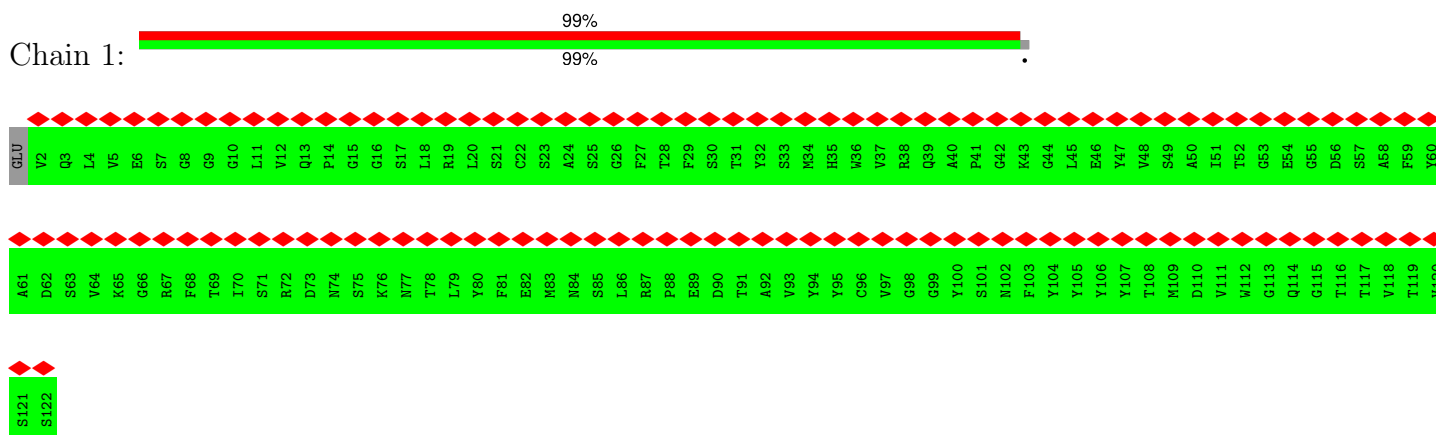
- Molecule 1: C8 scFv heavy chain



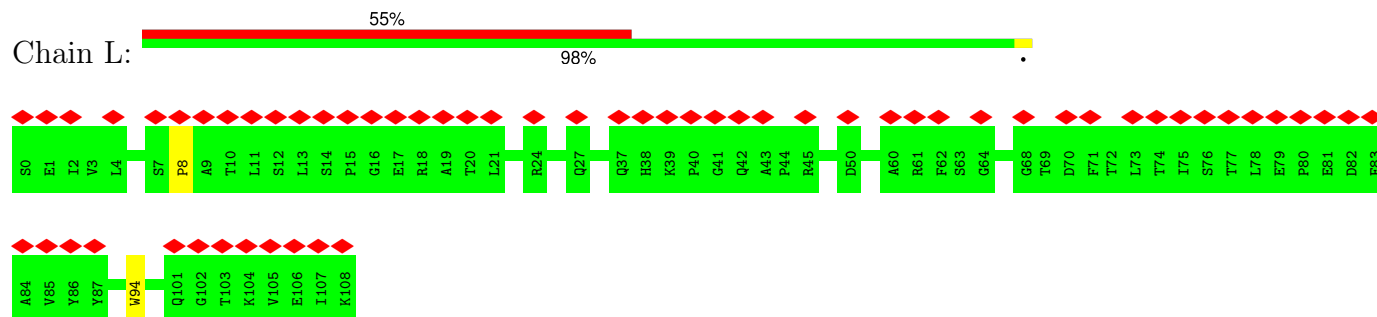
- Molecule 1: C8 scFv heavy chain



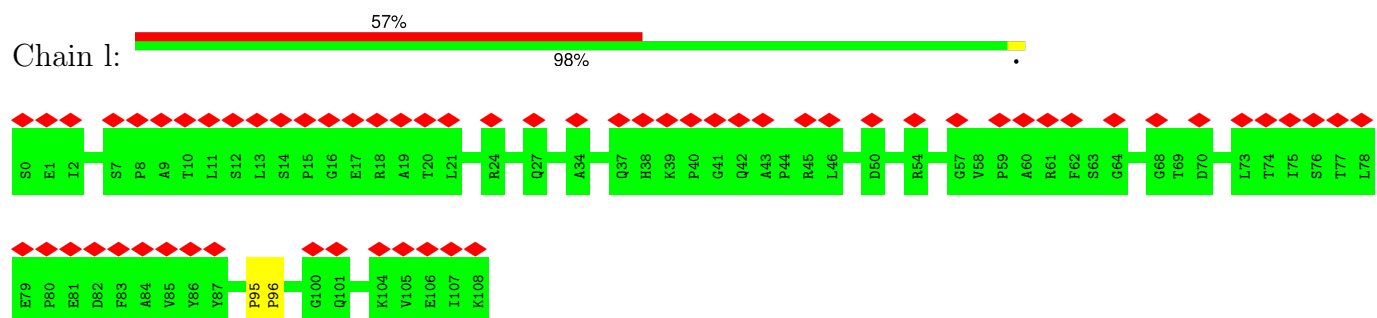
- Molecule 1: C8 scFv heavy chain



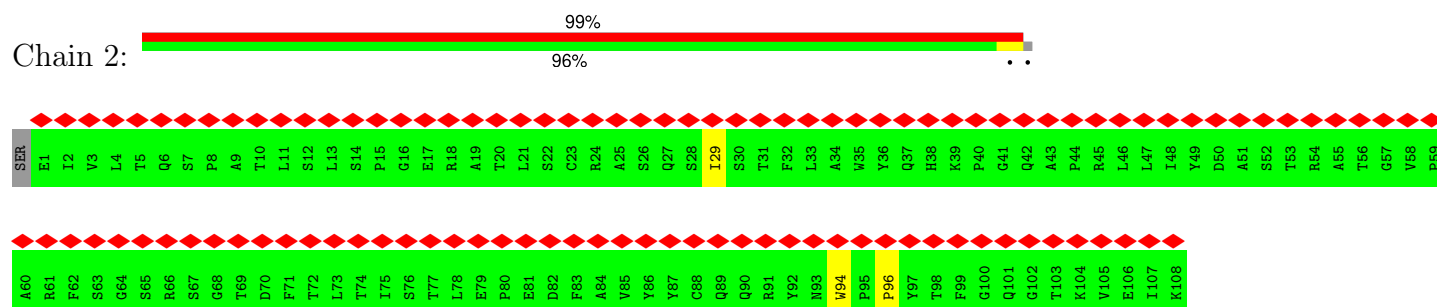
- Molecule 2: C8 scFv light chain



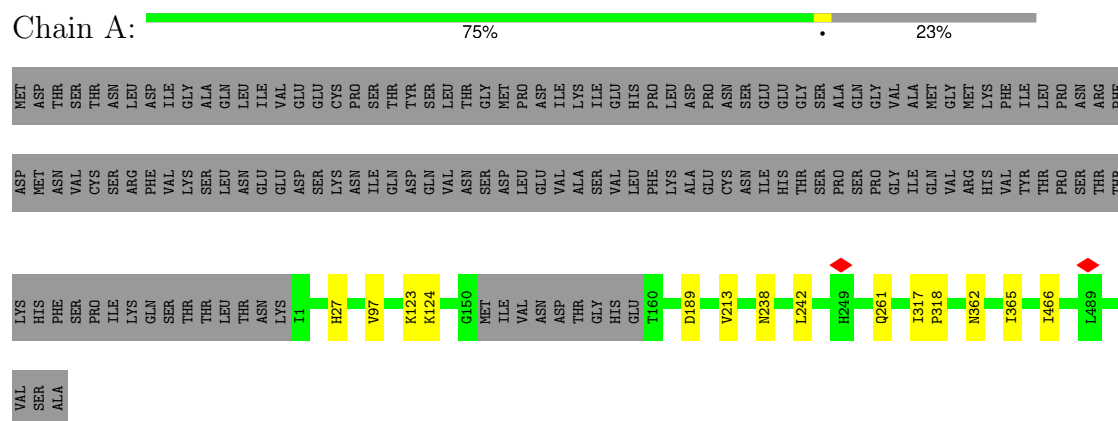
- Molecule 2: C8 scFv light chain



- Molecule 2: C8 scFv light chain

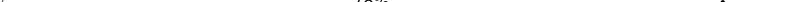


- Molecule 3: Ankyrin repeat family A protein 2,Envelope E protein



- Molecule 3: Ankyrin repeat family A protein 2,Envelope E protein

[illegible]

- Chain C:  78% 22%

[illegible]

- Chain D:  98%

[illegible]



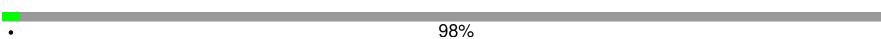




PRO	ARG	PRO	LEU	GLU	GLY
THR	HIS	ILE	ASN	ALA	PHE
GLY	GLN	ASP	THR	LEU	LEU
ARG	ASP	ARG	PHE	ILE	THR
THR	GLU	ARG	THR	ASN	GLU
TRP	ILE	ALA	LEU	GLN	ASP
SER	ILE	HIS	VAL	MET	HIS
ARG	GLY	HIS	VAL	MET	THR
THR	ARG	ALA	VAL	GLU	THR
ILE	ARG	ALA	VAL	GLU	GLY
GLY	ARG	ARG	LEU	GLN	GLY
LYS	VAL	PHE	ILE	HIS	GLU
GLY	SER	LEU	ARG	ARG	ASN
ASN	PRO	ASN	ALA	ALA	SER
GLU	GLY	ASP	MET	LEU	GLY
THR	ALA	MET	GLU	ALA	GLY
MET	GLY	GLY	ALA	LEU	GLY
THR	TRP	LYS	GLU	ALA	VAL
GLU	SER	VAL	GLU	ILE	GLU
ASN	ILE	ARG	VAL	ILE	GLY
ASP	ASP	LYS	VAL	ILE	GLY
VAL	ARG	LYS	GLU	LYS	LEU
ARG	THR	THR	MET	THR	GLY
ARG	ALA	GLN	GLN	THR	GLN
ILE	CYS	GLU	ASP	GLN	ARG
ILE	LEU	TRP	LEU	ASN	LEU
GLY	ALA	LYS	TRP	ASN	GLY
ASP	VAL	PRO	LEU	VAL	GLY
GLU	SER	SER	LEU	VAL	VAL
ILE	TYR	THR	ARG	LYS	LEU
LYS	ALA	GLY	ARG	VAL	GLU
TYR	GLN	TRP	SER	VAL	LEU
ASN	MET	ASP	GLU	ARG	GLY
ASP	TRP	ASN	LYS	PRO	MET
TYR	HIS	TRP	VAL	ALA	ARG
LEU	MET	GLU	THR	GLU	ILE
SER	LEU	GLU	THR	LYS	PRO
SER	TYR	GLU	ASN	GLY	THR
THR	ASP	VAL	TRP	GLY	GLY
GLN	PHE	PRO	LEU	LYS	GLY
VAL	HIS	PHE	GLN	THR	ARG
ARG	ARG	CYS	SER	VAL	THR
TYR	ARG	SER	ASN	MET	MET
LEU	ASP	HIS	GLY	ASP	TYR
GLY	LEU	HIS	THR	ILE	ASP
GLU	ARG	PHE	ASP	ILE	ASP
GLU	LEU	ASN	LEU	ARG	THR
GLY	MET	LYS	LEU	ARG	GLY
SER	ILE	ALA	LYS	GLN	ALA
THR	PRO	HIS	ARG	ASP	GLY
PRO	TYR	LYS	MET	GLN	TRP
GLY	LEU	ILE	ALA	ARG	THR
VAL	GLY	CYS	VAL	GLY	ASP
LEU	ARG	SER	GLY	SER	ILE
		SER	GLY	GLY	SER
		VAL	ASP	GLN	ARG
		ASP	VAL	VAL	THR
		TRP	VAL	THR	GLU
		CYS	VAL	THR	ASN
		TRP	VAL	ALA	THR

- Molecule 4: Membrane M protein

Chain E: 

[illegible]

WORLDWIDE  
PDB  
PROTEIN DATA BANK



[illegible]







ILE  
GLY  
HIS  
ARG  
PRO  
ARG  
THR  
THR  
TRP  
ALA  
GLU  
ASN  
ILE  
LYS  
ASN  
THR  
VAL  
ASN  
MET  
VAL  
ARG  
ARG  
ILE  
ILE  
GLY  
ASP  
GLU  
GLU  
LYS  
TYR  
MET  
ASP  
TYR  
LEU  
SER  
THR  
GLN  
VAL  
ARG  
TYR  
LEU  
GLY  
GLU  
GLY  
GLY  
SER  
THR  
PRO  
GLY  
VAL  
LEU

## 4 Experimental information

Property	Value	Source
EM reconstruction method	SINGLE PARTICLE	Depositor
Imposed symmetry	POINT, Not provided	
Number of particles used	1007280	Depositor
Resolution determination method	FSC 0.143 CUT-OFF	Depositor
CTF correction method	PHASE FLIPPING AND AMPLITUDE CORRECTION	Depositor
Microscope	FEI TITAN KRIOS	Depositor
Voltage (kV)	300	Depositor
Electron dose ( $e^-/\text{\AA}^2$ )	26	Depositor
Minimum defocus (nm)	1000	Depositor
Maximum defocus (nm)	4000	Depositor
Magnification	Not provided	
Image detector	GATAN K2 SUMMIT (4k x 4k)	Depositor
Maximum map value	14.196	Depositor
Minimum map value	-6.057	Depositor
Average map value	-0.000	Depositor
Map value standard deviation	1.000	Depositor
Recommended contour level	1.5	Depositor
Map size (Å)	265.0, 265.0, 265.0	wwPDB
Map dimensions	250, 250, 250	wwPDB
Map angles (°)	90.0, 90.0, 90.0	wwPDB
Pixel spacing (Å)	1.06, 1.06, 1.06	Depositor

## 5 Model quality

### 5.1 Standard geometry

The Z score for a bond length (or angle) is the number of standard deviations the observed value is removed from the expected value. A bond length (or angle) with  $|Z| > 5$  is considered an outlier worth inspection. RMSZ is the root-mean-square of all Z scores of the bond lengths (or angles).

Mol	Chain	Bond lengths		Bond angles	
		RMSZ	# Z  >5	RMSZ	# Z  >5
1	1	0.29	0/957	0.49	0/1298
1	H	0.30	0/957	0.46	0/1298
1	h	0.29	0/957	0.46	0/1298
2	2	0.29	0/869	0.55	1/1185 (0.1%)
2	L	0.35	0/875	0.48	0/1193
2	l	0.28	0/875	0.53	1/1193 (0.1%)
3	A	0.50	0/3798	0.61	2/5138 (0.0%)
3	B	0.51	0/3798	0.62	1/5138 (0.0%)
3	C	0.46	0/3869	0.58	0/5236
4	D	0.35	0/615	0.45	0/838
4	E	0.46	0/615	0.50	0/838
4	F	0.33	0/615	0.45	0/838
All	All	0.43	0/18800	0.56	5/25491 (0.0%)

Chiral center outliers are detected by calculating the chiral volume of a chiral center and verifying if the center is modelled as a planar moiety or with the opposite hand. A planarity outlier is detected by checking planarity of atoms in a peptide group, atoms in a mainchain group or atoms of a sidechain that are expected to be planar.

Mol	Chain	#Chirality outliers	#Planarity outliers
3	A	0	1

There are no bond length outliers.

All (5) bond angle outliers are listed below:

Mol	Chain	Res	Type	Atoms	Z	Observed(°)	Ideal(°)
2	2	29	ILE	N-CA-C	-5.78	95.40	111.00
2	l	95	PRO	C-N-CD	5.64	140.25	128.40
3	B	359	ILE	O-C-N	-5.35	114.14	122.70
3	A	242	LEU	CB-CG-CD2	-5.23	102.10	111.00
3	A	362	ASN	N-CA-C	-5.14	97.12	111.00

There are no chirality outliers.

All (1) planarity outliers are listed below:

Mol	Chain	Res	Type	Group
3	A	238	ASN	Mainchain

## 5.2 Too-close contacts [i](#)

Due to software issues we are unable to calculate clashes - this section is therefore empty.

## 5.3 Torsion angles [i](#)

### 5.3.1 Protein backbone [i](#)

In the following table, the Percentiles column shows the percent Ramachandran outliers of the chain as a percentile score with respect to all PDB entries followed by that with respect to all EM entries.

The Analysed column shows the number of residues for which the backbone conformation was analysed, and the total number of residues.

Mol	Chain	Analysed	Favoured	Allowed	Outliers	Percentiles	
1	1	119/122 (98%)	116 (98%)	3 (2%)	0	100	100
1	H	119/122 (98%)	118 (99%)	1 (1%)	0	100	100
1	h	119/122 (98%)	118 (99%)	1 (1%)	0	100	100
2	2	106/109 (97%)	99 (93%)	6 (6%)	1 (1%)	14	49
2	L	107/109 (98%)	100 (94%)	7 (6%)	0	100	100
2	l	107/109 (98%)	96 (90%)	10 (9%)	1 (1%)	14	49
3	A	488/639 (76%)	435 (89%)	50 (10%)	3 (1%)	22	57
3	B	488/639 (76%)	433 (89%)	51 (10%)	4 (1%)	16	51
3	C	499/639 (78%)	441 (88%)	57 (11%)	1 (0%)	44	75
4	D	73/3423 (2%)	66 (90%)	7 (10%)	0	100	100
4	E	73/3423 (2%)	66 (90%)	7 (10%)	0	100	100
4	F	73/3423 (2%)	65 (89%)	8 (11%)	0	100	100
All	All	2371/12879 (18%)	2153 (91%)	208 (9%)	10 (0%)	32	64

All (10) Ramachandran outliers are listed below:

Mol	Chain	Res	Type
3	A	317	ILE

*Continued on next page...*

*Continued from previous page...*

Mol	Chain	Res	Type
3	A	261	GLN
3	A	318	PRO
3	C	261	GLN
2	1	96	PRO
3	B	261	GLN
2	2	96	PRO
3	B	462	TRP
3	B	363	PRO
3	B	434	VAL

### 5.3.2 Protein sidechains ⓘ

In the following table, the Percentiles column shows the percent sidechain outliers of the chain as a percentile score with respect to all PDB entries followed by that with respect to all EM entries.

The Analysed column shows the number of residues for which the sidechain conformation was analysed, and the total number of residues.

Mol	Chain	Analysed	Rotameric	Outliers	Percentiles	
1	1	100/101 (99%)	100 (100%)	0	100	100
1	H	100/101 (99%)	100 (100%)	0	100	100
1	h	100/101 (99%)	100 (100%)	0	100	100
2	2	92/93 (99%)	91 (99%)	1 (1%)	70	86
2	L	93/93 (100%)	91 (98%)	2 (2%)	47	73
2	l	93/93 (100%)	93 (100%)	0	100	100
3	A	400/534 (75%)	392 (98%)	8 (2%)	50	75
3	B	400/534 (75%)	397 (99%)	3 (1%)	79	90
3	C	408/534 (76%)	404 (99%)	4 (1%)	73	87
4	D	64/2832 (2%)	63 (98%)	1 (2%)	58	79
4	E	64/2832 (2%)	64 (100%)	0	100	100
4	F	64/2832 (2%)	64 (100%)	0	100	100
All	All	1978/10680 (18%)	1959 (99%)	19 (1%)	71	87

All (19) residues with a non-rotameric sidechain are listed below:

Mol	Chain	Res	Type
2	L	8	PRO

*Continued on next page...*

*Continued from previous page...*

Mol	Chain	Res	Type
2	L	94	TRP
3	A	27	HIS
3	A	97	VAL
3	A	123	LYS
3	A	124	LYS
3	A	189	ASP
3	A	213	VAL
3	A	365	ILE
3	A	466	ILE
4	D	25	TYR
3	B	1	ILE
3	B	466	ILE
3	B	496	ILE
3	C	193	ARG
3	C	208	ASN
3	C	396	ILE
3	C	406	THR
2	2	94	TRP

Sometimes sidechains can be flipped to improve hydrogen bonding and reduce clashes. All (37) such sidechains are listed below:

Mol	Chain	Res	Type
1	H	39	GLN
2	L	42	GLN
2	L	90	GLN
3	A	103	ASN
3	A	134	ASN
3	A	148	HIS
3	A	163	ASN
3	A	344	GLN
3	A	399	HIS
4	D	7	HIS
1	h	39	GLN
2	l	38	HIS
2	l	42	GLN
3	B	77	GLN
3	B	85	GLN
3	B	103	ASN
3	B	148	HIS
3	B	238	ASN
3	B	249	HIS
3	B	266	HIS

*Continued on next page...*

*Continued from previous page...*

Mol	Chain	Res	Type
3	B	288	HIS
3	B	371	ASN
3	B	398	HIS
3	B	399	HIS
3	B	465	GLN
4	E	7	HIS
4	E	34	ASN
3	C	103	ASN
3	C	134	ASN
3	C	163	ASN
3	C	266	HIS
3	C	288	HIS
3	C	350	GLN
3	C	447	GLN
4	F	7	HIS
1	1	39	GLN
2	2	42	GLN

### 5.3.3 RNA [i](#)

There are no RNA molecules in this entry.

### 5.4 Non-standard residues in protein, DNA, RNA chains [i](#)

There are no non-standard protein/DNA/RNA residues in this entry.

### 5.5 Carbohydrates [i](#)

There are no oligosaccharides in this entry.

### 5.6 Ligand geometry [i](#)

There are no ligands in this entry.

### 5.7 Other polymers [i](#)

There are no such residues in this entry.

## 5.8 Polymer linkage issues ⓘ

There are no chain breaks in this entry.



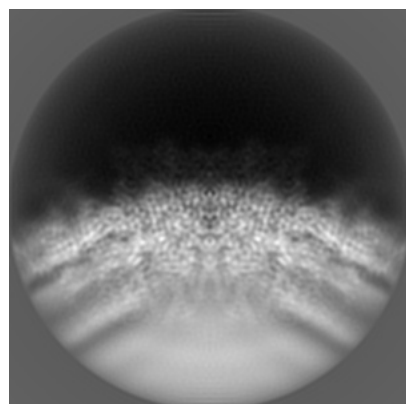
## 6 Map visualisation [i](#)

This section contains visualisations of the EMDB entry EMD-27055. These allow visual inspection of the internal detail of the map and identification of artifacts.

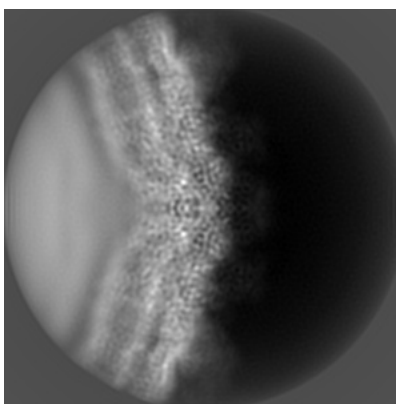
Images derived from a raw map, generated by summing the deposited half-maps, are presented below the corresponding image components of the primary map to allow further visual inspection and comparison with those of the primary map.

### 6.1 Orthogonal projections [i](#)

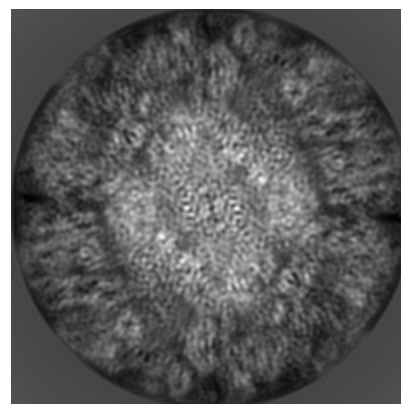
#### 6.1.1 Primary map



X

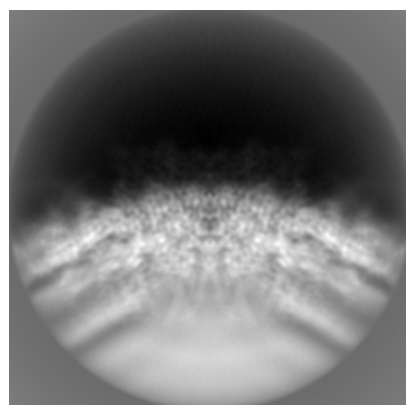


Y

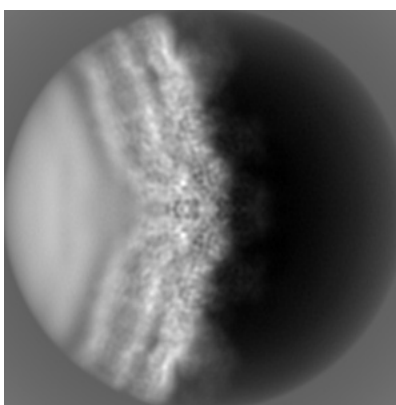


Z

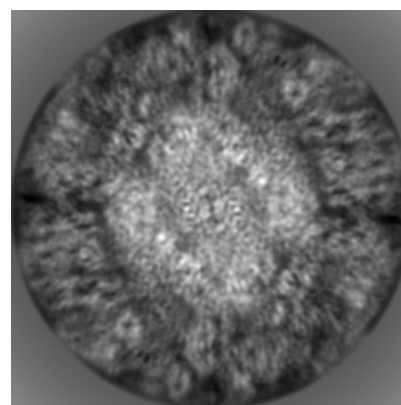
#### 6.1.2 Raw map



X



Y

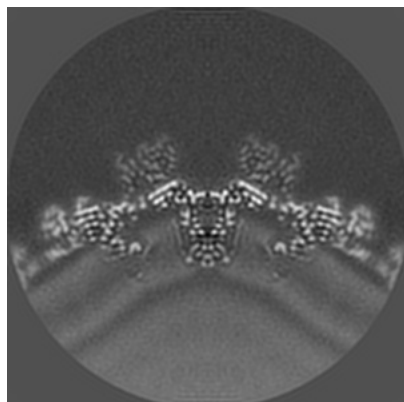


Z

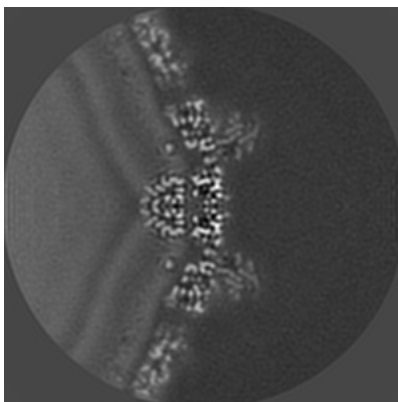
The images above show the map projected in three orthogonal directions.

## 6.2 Central slices [i](#)

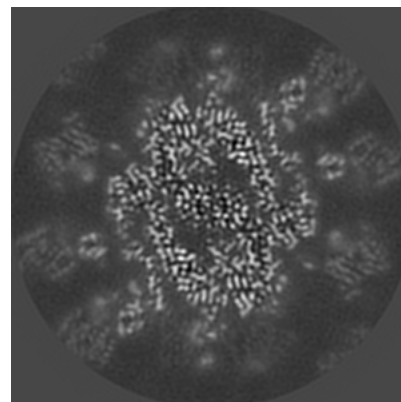
### 6.2.1 Primary map



X Index: 125

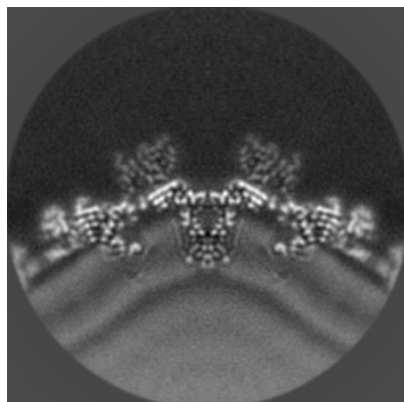


Y Index: 125

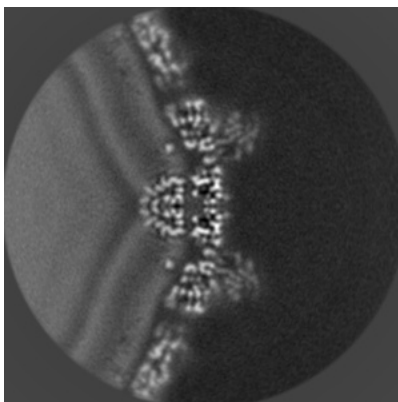


Z Index: 125

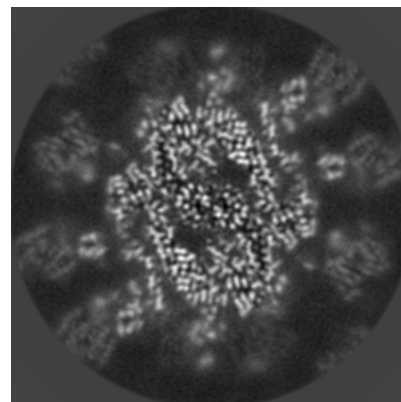
### 6.2.2 Raw map



X Index: 125



Y Index: 125

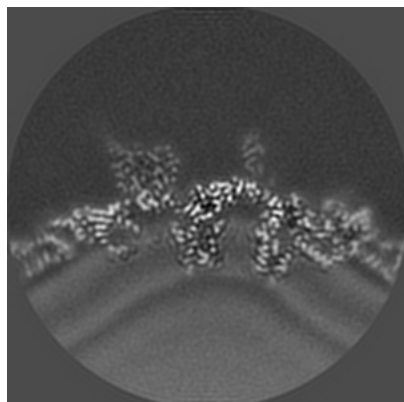


Z Index: 125

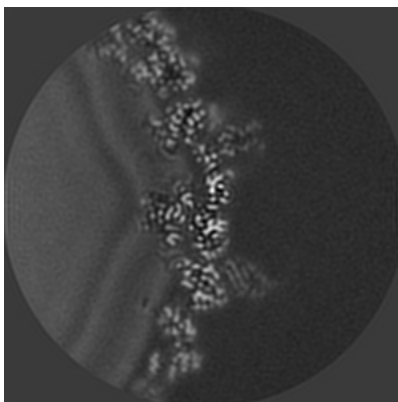
The images above show central slices of the map in three orthogonal directions.

## 6.3 Largest variance slices [i](#)

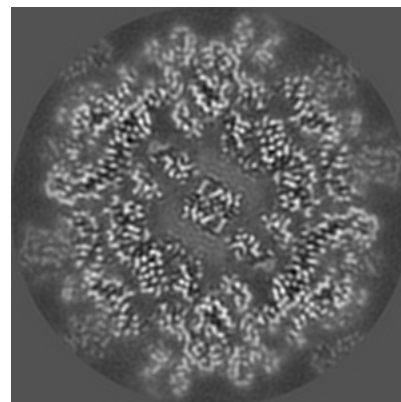
### 6.3.1 Primary map



X Index: 133

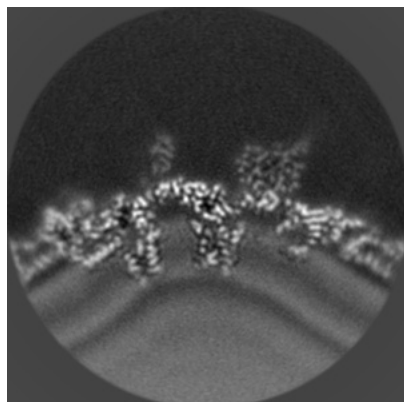


Y Index: 134

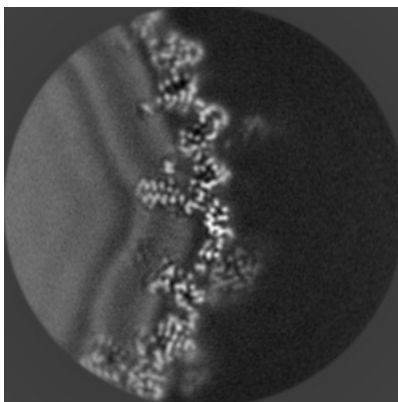


Z Index: 112

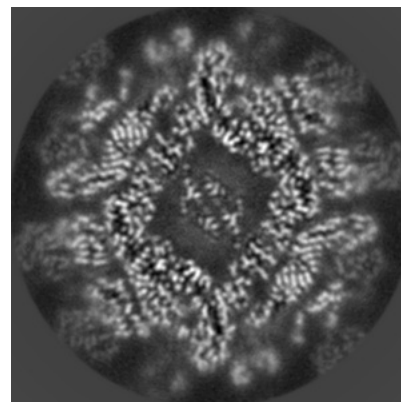
### 6.3.2 Raw map



X Index: 117



Y Index: 112

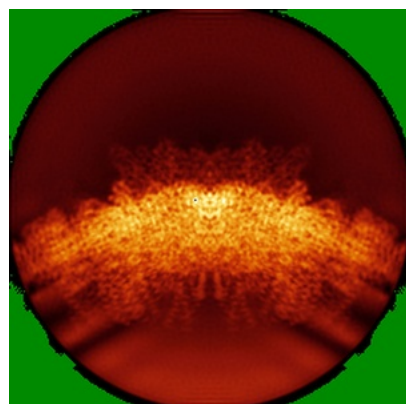


Z Index: 116

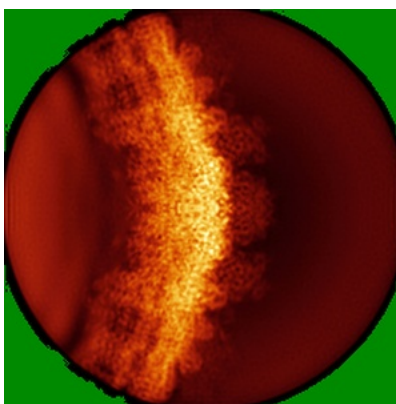
The images above show the largest variance slices of the map in three orthogonal directions.

## 6.4 Orthogonal standard-deviation projections (False-color) [i](#)

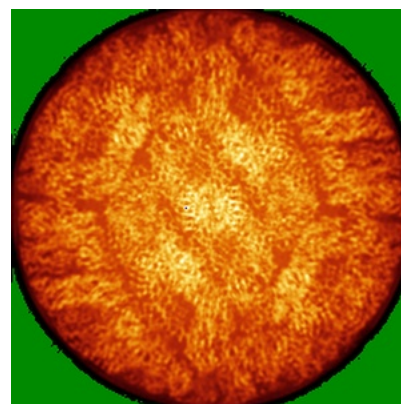
### 6.4.1 Primary map



X

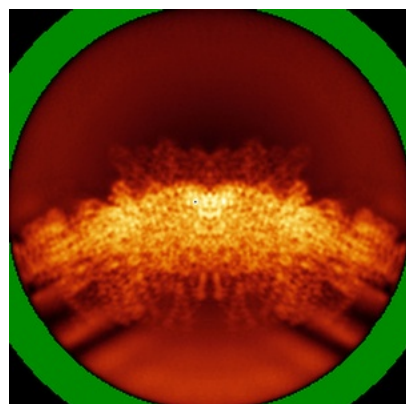


Y

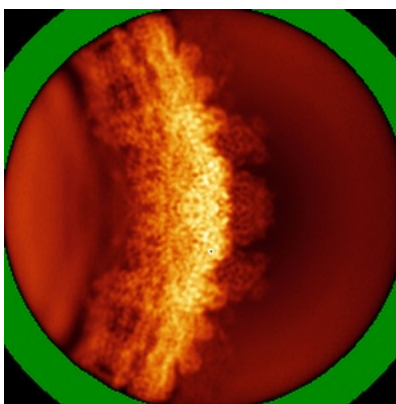


Z

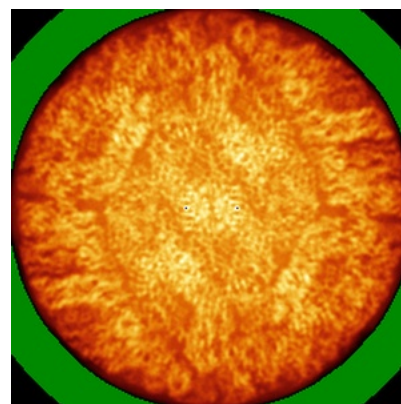
### 6.4.2 Raw map



X



Y



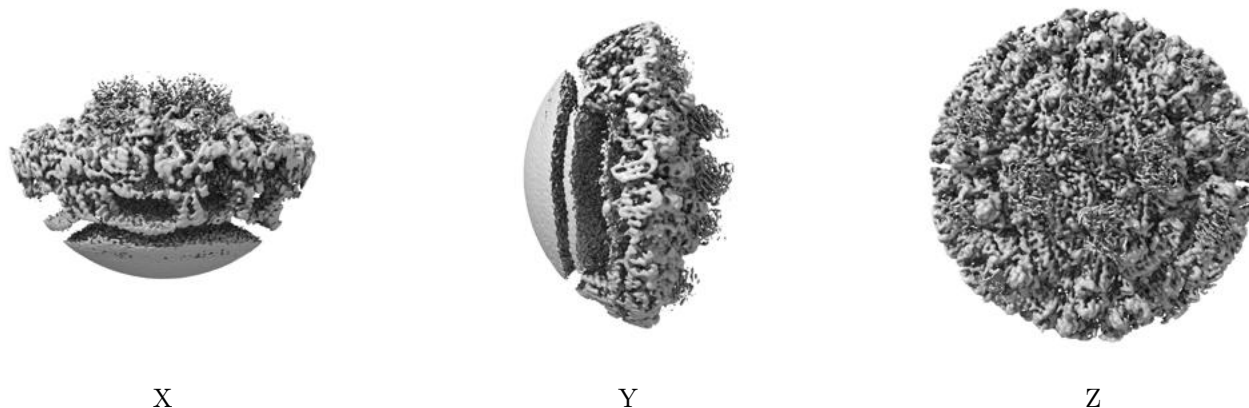
Z

The images above show the map standard deviation projections with false color in three orthogonal directions. Minimum values are shown in green, max in blue, and dark to light orange shades represent small to large values respectively.



## 6.5 Orthogonal surface views [i](#)

### 6.5.1 Primary map



The images above show the 3D surface view of the map at the recommended contour level 1.5. These images, in conjunction with the slice images, may facilitate assessment of whether an appropriate contour level has been provided.

### 6.5.2 Raw map



These images show the 3D surface of the raw map. The raw map's contour level was selected so that its surface encloses the same volume as the primary map does at its recommended contour level.

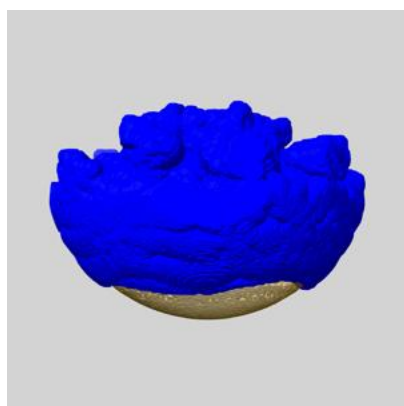
## 6.6 Mask visualisation [i](#)

This section shows the 3D surface view of the primary map at 50% transparency overlaid with the specified mask at 0% transparency

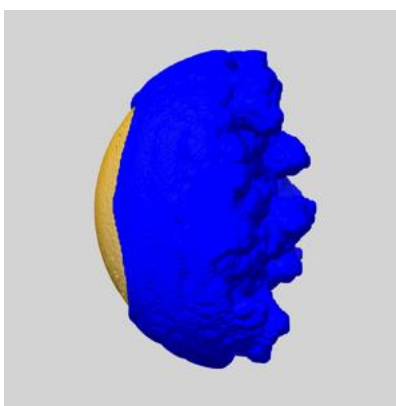
A mask typically either:

- Encompasses the whole structure
- Separates out a domain, a functional unit, a monomer or an area of interest from a larger structure

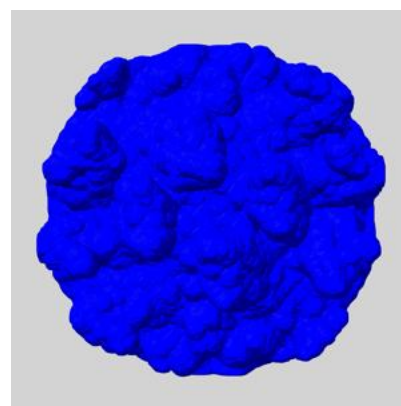
### 6.6.1 emd\_27055\_msk\_1.map [i](#)



X



Y

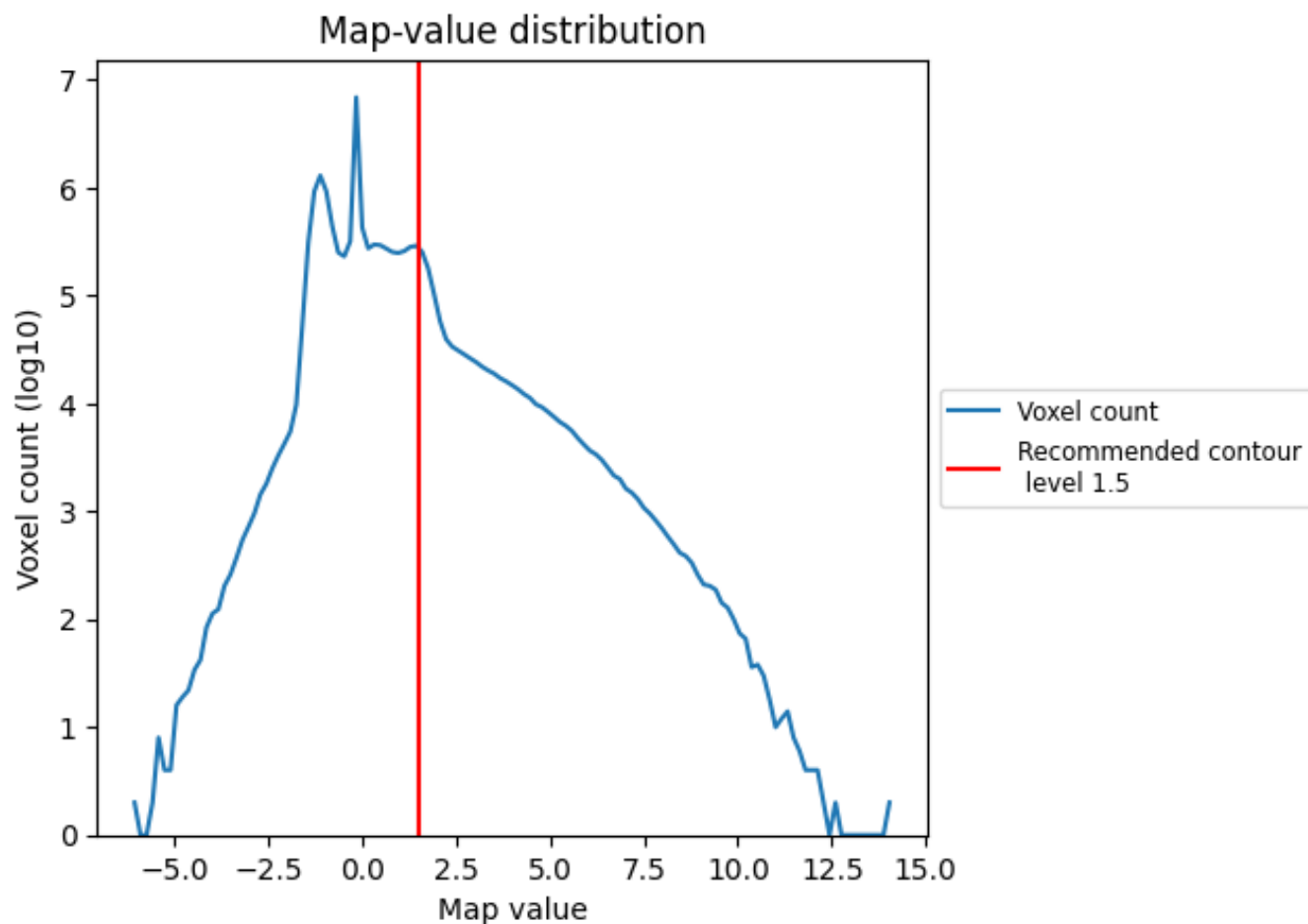


Z

## 7 Map analysis [i](#)

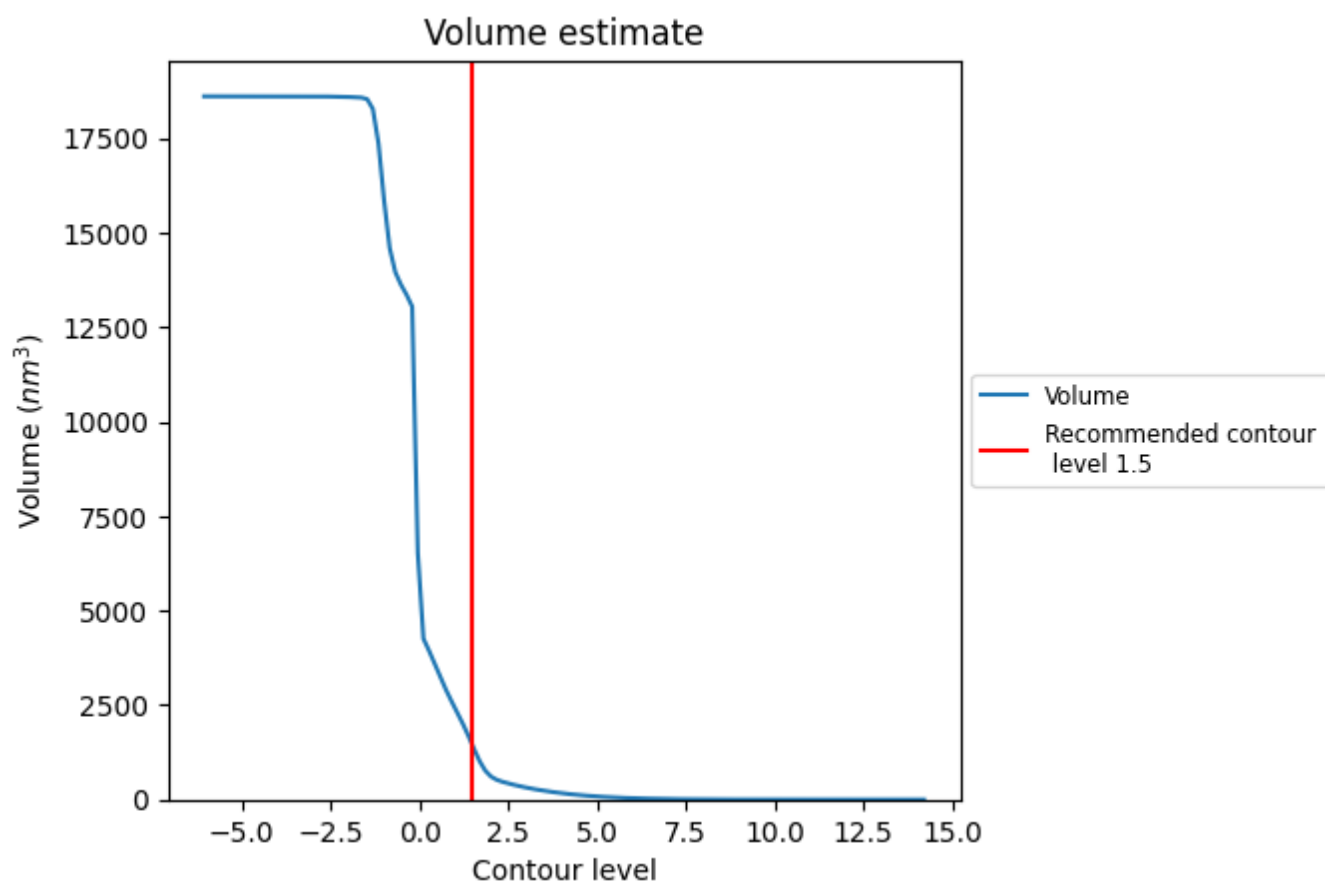
This section contains the results of statistical analysis of the map.

### 7.1 Map-value distribution [i](#)



The map-value distribution is plotted in 128 intervals along the x-axis. The y-axis is logarithmic. A spike in this graph at zero usually indicates that the volume has been masked.

## 7.2 Volume estimate [i](#)

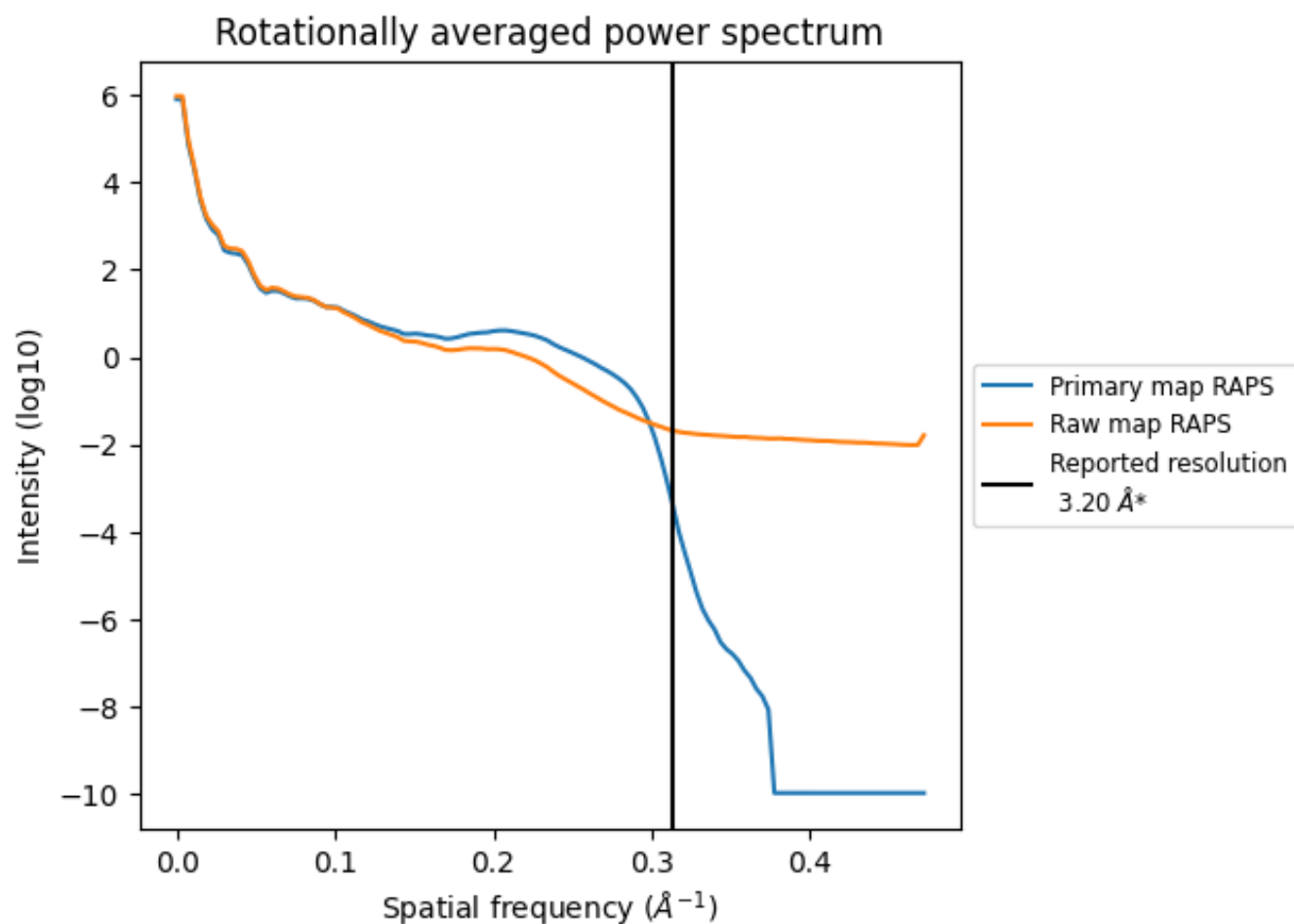


The volume at the recommended contour level is 1420 nm<sup>3</sup>; this corresponds to an approximate mass of 1283 kDa.

The volume estimate graph shows how the enclosed volume varies with the contour level. The recommended contour level is shown as a vertical line and the intersection between the line and the curve gives the volume of the enclosed surface at the given level.



### 7.3 Rotationally averaged power spectrum ⓘ

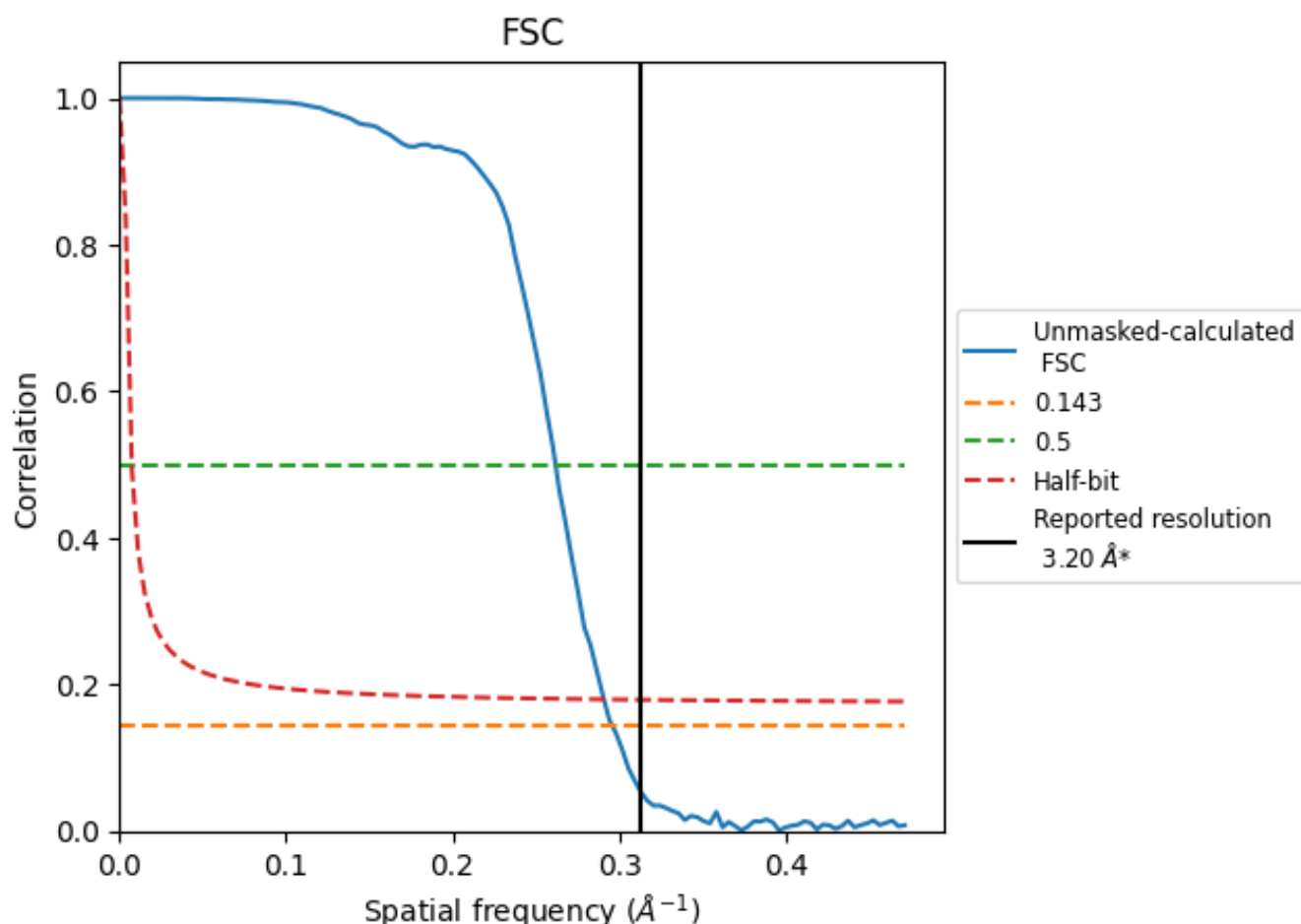


\*Reported resolution corresponds to spatial frequency of 0.312 Å<sup>-1</sup>

## 8 Fourier-Shell correlation [i](#)

Fourier-Shell Correlation (FSC) is the most commonly used method to estimate the resolution of single-particle and subtomogram-averaged maps. The shape of the curve depends on the imposed symmetry, mask and whether or not the two 3D reconstructions used were processed from a common reference. The reported resolution is shown as a black line. A curve is displayed for the half-bit criterion in addition to lines showing the 0.143 gold standard cut-off and 0.5 cut-off.

### 8.1 FSC [i](#)



\*Reported resolution corresponds to spatial frequency of 0.312 Å<sup>-1</sup>

## 8.2 Resolution estimates [i](#)

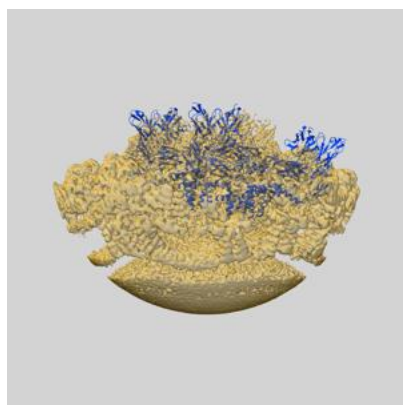
Resolution estimate (Å)	Estimation criterion (FSC cut-off)		
	0.143	0.5	Half-bit
Reported by author	3.20	-	-
Author-provided FSC curve	-	-	-
Unmasked-calculated*	3.38	3.82	3.44

\*Resolution estimate based on FSC curve calculated by comparison of deposited half-maps.

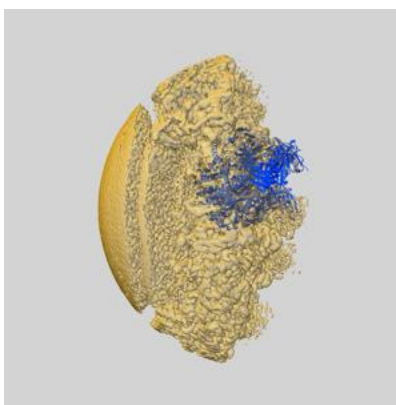
## 9 Map-model fit [i](#)

This section contains information regarding the fit between EMDB map EMD-27055 and PDB model 8CXG. Per-residue inclusion information can be found in [section 3](#) on [page 6](#).

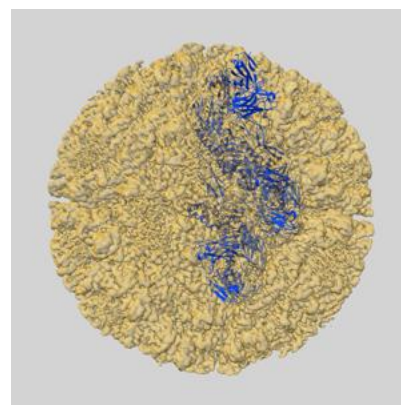
### 9.1 Map-model overlay [i](#)



X



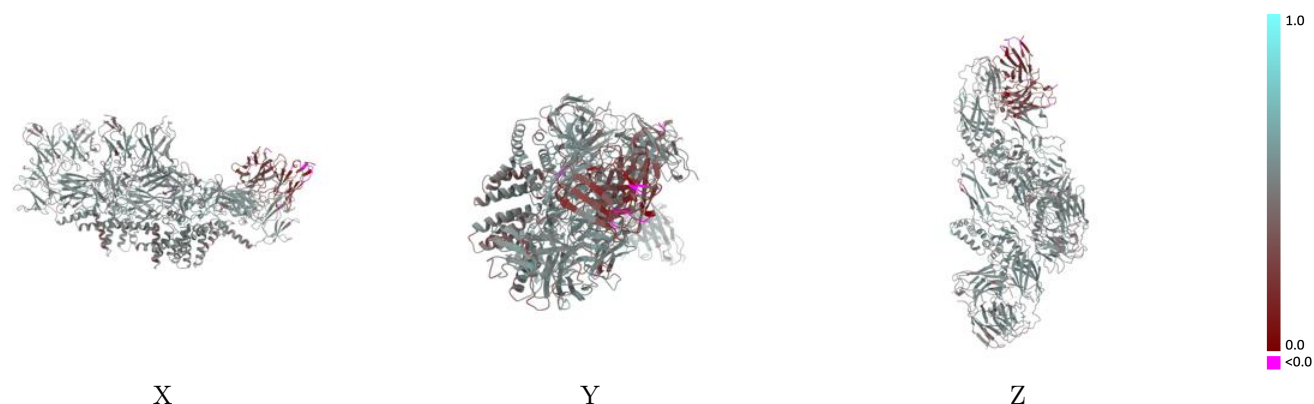
Y



Z

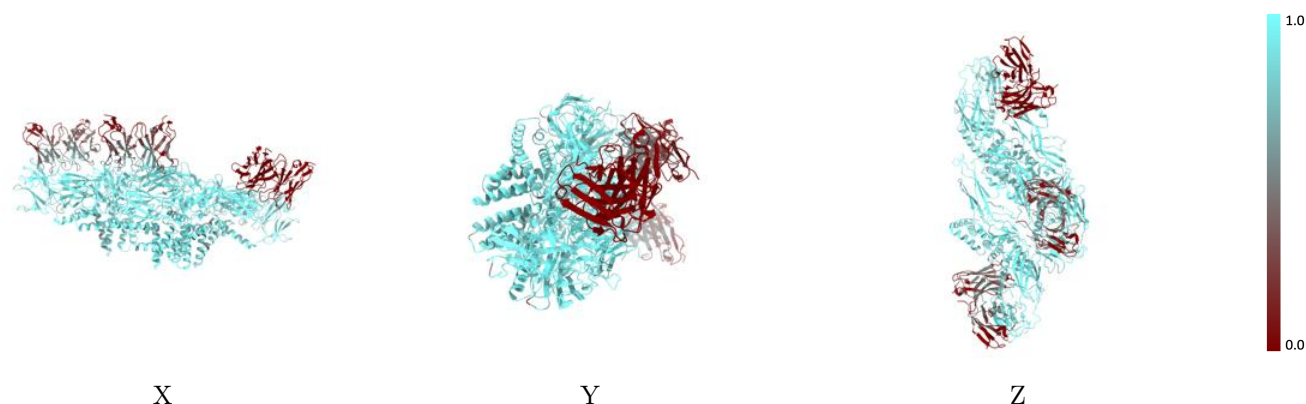
The images above show the 3D surface view of the map at the recommended contour level 1.5 at 50% transparency in yellow overlaid with a ribbon representation of the model coloured in blue. These images allow for the visual assessment of the quality of fit between the atomic model and the map.

## 9.2 Q-score mapped to coordinate model [i](#)



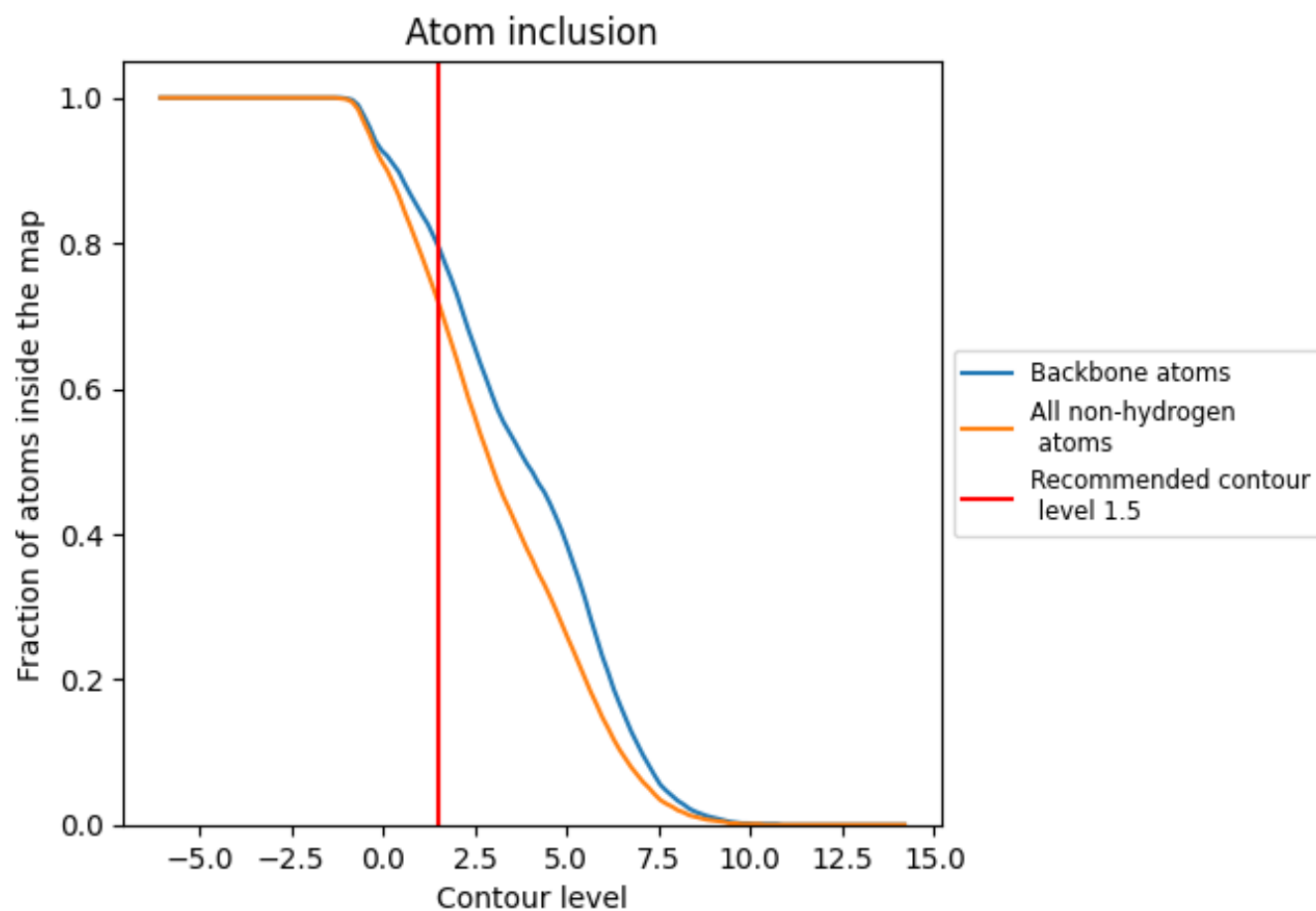
The images above show the model with each residue coloured according to its Q-score. This shows their resolvability in the map with higher Q-score values reflecting better resolvability. Please note: Q-score is calculating the resolvability of atoms, and thus high values are only expected at resolutions at which atoms can be resolved. Low Q-score values may therefore be expected for many entries.

## 9.3 Atom inclusion mapped to coordinate model [i](#)



The images above show the model with each residue coloured according to its atom inclusion. This shows to what extent they are inside the map at the recommended contour level (1.5).

## 9.4 Atom inclusion ⓘ



At the recommended contour level, 80% of all backbone atoms, 72% of all non-hydrogen atoms, are inside the map.

9.5 Map-model fit summary ⓘ

The table lists the average atom inclusion at the recommended contour level (1.5) and Q-score for the entire model and for each chain.

Chain	Atom inclusion	Q-score
All	<div></div> 0.7190	<div></div> 0.4850
1	<div></div> 0.0030	<div></div> 0.3020
2	<div></div> 0.0000	<div></div> 0.2290
A	<div></div> 0.9140	<div></div> 0.5140
B	<div></div> 0.9080	<div></div> 0.5030
C	<div></div> 0.9090	<div></div> 0.5040
D	<div></div> 0.9210	<div></div> 0.5430
E	<div></div> 0.9180	<div></div> 0.5310
F	<div></div> 0.9110	<div></div> 0.5120
H	<div></div> 0.4120	<div></div> 0.5090
L	<div></div> 0.3250	<div></div> 0.4950
h	<div></div> 0.3920	<div></div> 0.5030
l	<div></div> 0.3390	<div></div> 0.4970

1.0

0.0

<0.0