



# Full wwPDB X-ray Structure Validation Report ⓘ

Oct 28, 2024 – 02:24 pm GMT

PDB ID : 4CWY  
Title : Structure of bovine endothelial nitric oxide synthase heme domain in complex with 6-(5-(((3R,4R)-4-((6-AMINO-4-METHYLPYRIDIN-2-YL)METHYL) P YRROLIDIN-3-YL)OXY)PENTYL)-4-METHYLPYRIDIN-2-AMINE  
Authors : Li, H.; Poulos, T.L.  
Deposited on : 2014-04-03  
Resolution : 2.15 Å(reported)

This is a Full wwPDB X-ray Structure Validation Report for a publicly released PDB entry.

We welcome your comments at [validation@mail.wwpdb.org](mailto:validation@mail.wwpdb.org)

A user guide is available at

<https://www.wwpdb.org/validation/2017/XrayValidationReportHelp>

with specific help available everywhere you see the ⓘ symbol.

The types of validation reports are described at

<http://www.wwpdb.org/validation/2017/FAQs#types>.

---

The following versions of software and data (see [references ⓘ](#)) were used in the production of this report:

MolProbity	:	4.02b-467
Mogul	:	1.8.4, CSD as541be (2020)
Xtriage (Phenix)	:	1.13
EDS	:	3.0
buster-report	:	1.1.7 (2018)
Percentile statistics	:	20231227.v01 (using entries in the PDB archive December 27th 2023)
CCP4	:	9.0.003 (Gargrove)
Density-Fitness	:	1.0.11
Ideal geometry (proteins)	:	Engh & Huber (2001)
Ideal geometry (DNA, RNA)	:	Parkinson et al. (1996)
Validation Pipeline (wwPDB-VP)	:	2.39

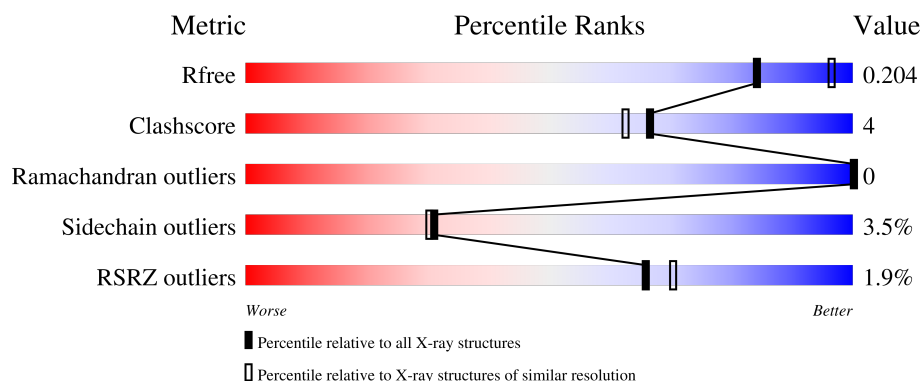
# 1 Overall quality at a glance

The following experimental techniques were used to determine the structure:

*X-RAY DIFFRACTION*

The reported resolution of this entry is 2.15 Å.

Percentile scores (ranging between 0-100) for global validation metrics of the entry are shown in the following graphic. The table shows the number of entries on which the scores are based.



Metric	Whole archive (#Entries)	Similar resolution (#Entries, resolution range(Å))
$R_{free}$	164625	1881 (2.16-2.16)
Clashscore	180529	2047 (2.16-2.16)
Ramachandran outliers	177936	2027 (2.16-2.16)
Sidechain outliers	177891	2026 (2.16-2.16)
RSRZ outliers	164620	1882 (2.16-2.16)

The table below summarises the geometric issues observed across the polymeric chains and their fit to the electron density. The red, orange, yellow and green segments of the lower bar indicate the fraction of residues that contain outliers for  $\geq 3$ , 2, 1 and 0 types of geometric quality criteria respectively. A grey segment represents the fraction of residues that are not modelled. The numeric value for each fraction is indicated below the corresponding segment, with a dot representing fractions  $\leq 5\%$ . The upper red bar (where present) indicates the fraction of residues that have poor fit to the electron density. The numeric value is given above the bar.

Mol	Chain	Length	Quality of chain
1	A	443	
1	B	443	

## 2 Entry composition [i](#)

There are 7 unique types of molecules in this entry. The entry contains 6896 atoms, of which 0 are hydrogens and 0 are deuteriums.

In the tables below, the ZeroOcc column contains the number of atoms modelled with zero occupancy, the AltConf column contains the number of residues with at least one atom in alternate conformation and the Trace column contains the number of residues modelled with at most 2 atoms.

- Molecule 1 is a protein called NITRIC OXIDE SYNTHASE, ENDOTHELIAL.

Mol	Chain	Residues	Atoms						ZeroOcc	AltConf	Trace
1	A	404	Total	As	C	N	O	S	0	0	0
			3212	1	2043	564	588	16			
1	B	402	Total	As	C	N	O	S	0	0	0
			3201	1	2036	562	586	16			

There are 2 discrepancies between the modelled and reference sequences:

Chain	Residue	Modelled	Actual	Comment	Reference
A	100	ARG	CYS	SEE REMARK 999	UNP P29473
B	100	ARG	CYS	SEE REMARK 999	UNP P29473

- Molecule 2 is PROTOPORPHYRIN IX CONTAINING FE (three-letter code: HEM) (formula:  $C_{34}H_{32}FeN_4O_4$ ).



Mol	Chain	Residues	Atoms					ZeroOcc	AltConf
2	A	1	Total	C	Fe	N	O	0	0
			43	34	1	4	4		

*Continued on next page...*

Continued from previous page...

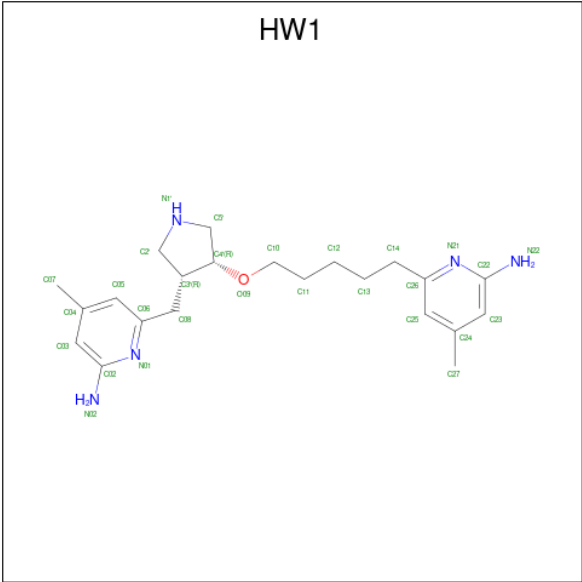
Mol	Chain	Residues	Atoms					ZeroOcc	AltConf
2	B	1	Total	C	Fe	N	O	0	0
			43	34	1	4	4		

- Molecule 3 is 5,6,7,8-TETRAHYDROBIOPTERIN (three-letter code: H4B) (formula:  $C_9H_{15}N_5O_3$ ).



Mol	Chain	Residues	Atoms				ZeroOcc	AltConf
3	A	1	Total	C	N	O	0	0
			17	9	5	3		
3	B	1	Total	C	N	O	0	0
			17	9	5	3		

- Molecule 4 is 6-[5-((3R,4R)-4-[(6-amino-4-methylpyridin-2-yl)methyl]pyrrolidin-3-yl)oxy]pentyl]-4-methylpyridin-2-amine (three-letter code: HW1) (formula:  $C_{22}H_{33}N_5O$ ).



Mol	Chain	Residues	Atoms				ZeroOcc	AltConf
4	A	1	Total	C	N	O	0	0
			28	22	5	1		
4	B	1	Total	C	N	O	0	0
			28	22	5	1		

- Molecule 5 is ACETATE ION (three-letter code: ACT) (formula: C<sub>2</sub>H<sub>3</sub>O<sub>2</sub>).



Mol	Chain	Residues	Atoms			ZeroOcc	AltConf
5	A	1	Total	C	O	0	0
			4	2	2		
5	A	1	Total	C	O	0	0
			4	2	2		

Continued on next page...

*Continued from previous page...*

Mol	Chain	Residues	Atoms			ZeroOcc	AltConf
5	B	1	Total	C	O	0	0
			4	2	2		
5	B	1	Total	C	O	0	0
			4	2	2		

- Molecule 6 is ZINC ION (three-letter code: ZN) (formula: Zn).

Mol	Chain	Residues	Atoms		ZeroOcc	AltConf
6	B	1	Total	Zn	0	0
			1	1		

- Molecule 7 is water.

Mol	Chain	Residues	Atoms		ZeroOcc	AltConf
7	A	159	Total	O	0	0
			159	159		
7	B	131	Total	O	0	0
			131	131		



## 4 Data and refinement statistics

Property	Value	Source
Space group	P 21 21 21	Depositor
Cell constants a, b, c, $\alpha$ , $\beta$ , $\gamma$	57.88Å 106.47Å 156.97Å 90.00° 90.00° 90.00°	Depositor
Resolution (Å)	39.08 – 2.15 39.08 – 2.15	Depositor EDS
% Data completeness (in resolution range)	99.4 (39.08-2.15) 99.7 (39.08-2.15)	Depositor EDS
$R_{merge}$	0.07	Depositor
$R_{sym}$	(Not available)	Depositor
$\langle I/\sigma(I) \rangle$ <sup>1</sup>	1.68 (at 2.14Å)	Xtriage
Refinement program	REFMAC 5.6.0117	Depositor
R, $R_{free}$	0.167 , 0.204 0.166 , 0.204	Depositor DCC
$R_{free}$ test set	2683 reflections (5.02%)	wwPDB-VP
Wilson B-factor (Å <sup>2</sup> )	42.0	Xtriage
Anisotropy	0.478	Xtriage
Bulk solvent $k_{sol}$ (e/Å <sup>3</sup> ), $B_{sol}$ (Å <sup>2</sup> )	0.35 , 35.1	EDS
L-test for twinning <sup>2</sup>	$\langle  L  \rangle = 0.50$ , $\langle L^2 \rangle = 0.33$	Xtriage
Estimated twinning fraction	No twinning to report.	Xtriage
$F_o, F_c$ correlation	0.97	EDS
Total number of atoms	6896	wwPDB-VP
Average B, all atoms (Å <sup>2</sup> )	50.0	wwPDB-VP

Xtriage's analysis on translational NCS is as follows: *The largest off-origin peak in the Patterson function is 3.70% of the height of the origin peak. No significant pseudotranslation is detected.*

<sup>1</sup>Intensities estimated from amplitudes.

<sup>2</sup>Theoretical values of  $\langle |L| \rangle$ ,  $\langle L^2 \rangle$  for acentric reflections are 0.5, 0.333 respectively for untwinned datasets, and 0.375, 0.2 for perfectly twinned datasets.



## 5 Model quality

### 5.1 Standard geometry

Bond lengths and bond angles in the following residue types are not validated in this section: HEM, ZN, CAS, ACT, HW1, H4B

The Z score for a bond length (or angle) is the number of standard deviations the observed value is removed from the expected value. A bond length (or angle) with  $|Z| > 5$  is considered an outlier worth inspection. RMSZ is the root-mean-square of all Z scores of the bond lengths (or angles).

Mol	Chain	Bond lengths		Bond angles	
		RMSZ	$\# Z  > 5$	RMSZ	$\# Z  > 5$
1	A	0.65	4/3292 (0.1%)	0.65	0/4483
1	B	0.64	6/3280 (0.2%)	0.63	0/4466
All	All	0.65	10/6572 (0.2%)	0.64	0/8949

All (10) bond length outliers are listed below:

Mol	Chain	Res	Type	Atoms	Z	Observed(Å)	Ideal(Å)
1	A	447	TRP	CD2-CE2	5.95	1.48	1.41
1	A	396	TRP	CD2-CE2	5.77	1.48	1.41
1	A	281	TRP	CD2-CE2	5.55	1.48	1.41
1	A	358	TRP	CD2-CE2	5.53	1.48	1.41
1	B	281	TRP	CD2-CE2	5.41	1.47	1.41
1	B	358	TRP	CD2-CE2	5.35	1.47	1.41
1	B	332	TRP	CD2-CE2	5.21	1.47	1.41
1	B	396	TRP	CD2-CE2	5.11	1.47	1.41
1	B	447	TRP	CD2-CE2	5.06	1.47	1.41
1	B	76	TRP	CD2-CE2	5.02	1.47	1.41

There are no bond angle outliers.

There are no chirality outliers.

There are no planarity outliers.

### 5.2 Too-close contacts

In the following table, the Non-H and H(model) columns list the number of non-hydrogen atoms and hydrogen atoms in the chain respectively. The H(added) column lists the number of hydrogen atoms added and optimized by MolProbity. The Clashes column lists the number of clashes within the asymmetric unit, whereas Symm-Clashes lists symmetry-related clashes.

Mol	Chain	Non-H	H(model)	H(added)	Clashes	Symm-Clashes
1	A	3212	0	3114	20	0
1	B	3201	0	3104	22	0
2	A	43	0	30	2	0
2	B	43	0	30	6	0
3	A	17	0	15	2	0
3	B	17	0	15	1	0
4	A	28	0	33	3	0
4	B	28	0	33	3	0
5	A	8	0	6	0	0
5	B	8	0	6	0	0
6	B	1	0	0	0	0
7	A	159	0	0	1	0
7	B	131	0	0	1	0
All	All	6896	0	6386	47	0

The all-atom clashscore is defined as the number of clashes found per 1000 atoms (including hydrogen atoms). The all-atom clashscore for this structure is 4.

All (47) close contacts within the same asymmetric unit are listed below, sorted by their clash magnitude.

Atom-1	Atom-2	Interatomic distance (Å)	Clash overlap (Å)
1:A:384:CAS:SG	1:A:384:CAS:AS	2.58	1.22
1:B:384:CAS:SG	1:B:384:CAS:AS	2.64	1.16
1:A:384:CAS:AS	1:A:384:CAS:CB	2.99	0.71
1:A:240:ARG:HD3	1:A:298:PRO:HB3	1.74	0.69
1:A:384:CAS:AS	1:A:384:CAS:HB2	2.59	0.62
1:B:71:PRO:HG2	1:B:84:ASP:HB3	1.82	0.62
1:B:476:ARG:NH1	7:B:2126:HOH:O	2.29	0.61
1:B:259:GLN:NE2	1:B:260:ASP:OD2	2.33	0.60
2:B:500:HEM:C1C	4:B:800:HW1:H34	2.37	0.60
1:B:233:PHE:HB3	1:B:234:PRO:CD	2.35	0.55
1:B:99:ARG:HG2	1:B:100:ARG:HD2	1.88	0.54
1:A:246:TRP:HB2	1:A:294:LEU:HB3	1.89	0.53
2:A:500:HEM:HBA2	4:A:800:HW1:H24	1.91	0.52
2:B:500:HEM:HMC1	2:B:500:HEM:HBC2	1.92	0.52
2:B:500:HEM:HBC2	2:B:500:HEM:CMC	2.40	0.52
1:A:449:TRP:HA	3:A:600:H4B:N1	2.26	0.51
1:A:240:ARG:HD3	1:A:298:PRO:CB	2.41	0.51
1:A:378:LEU:HB2	7:A:2118:HOH:O	2.10	0.51
1:B:449:TRP:HA	3:B:600:H4B:N1	2.26	0.51
1:A:370:CYS:SG	1:A:378:LEU:HD13	2.51	0.51
1:A:126:LEU:HD11	1:A:156:GLU:HA	1.94	0.50

*Continued on next page...*

*Continued from previous page...*

Atom-1	Atom-2	Interatomic distance (Å)	Clash overlap (Å)
1:A:72:ARG:HB2	1:A:83:TYR:CE1	2.50	0.46
1:A:240:ARG:HD2	1:A:241:GLY:O	2.16	0.46
1:A:102:LEU:HD11	1:B:71:PRO:HB3	1.98	0.46
1:B:178:GLN:HE22	1:B:181:ARG:HH11	1.63	0.46
1:B:358:TRP:H	2:B:500:HEM:HAB	1.82	0.45
1:B:231:THR:O	1:B:353:ALA:HA	2.16	0.45
1:B:236:ARG:HD2	1:B:242:ASP:OD1	2.17	0.45
1:A:70:PHE:HB3	1:A:84:ASP:O	2.18	0.43
1:A:472:SER:HA	1:A:473:PRO:C	2.38	0.43
1:B:337:ALA:HB2	1:B:356:SER:HB3	2.00	0.43
1:A:185:ARG:NH1	1:A:477:TYR:OH	2.51	0.43
1:B:281:TRP:HB2	1:B:304:LEU:HD21	2.00	0.42
1:B:311:LEU:HD23	1:B:311:LEU:HA	1.91	0.42
1:B:236:ARG:CD	1:B:242:ASP:OD1	2.67	0.42
1:A:338:VAL:HG23	4:A:800:HW1:H31	2.02	0.42
1:B:366:THR:O	1:B:370:CYS:HB2	2.19	0.42
1:B:481:PRO:HD2	1:B:482:TRP:CZ3	2.55	0.42
1:B:384:CAS:AS	1:B:384:CAS:CB	3.28	0.42
1:A:105:LEU:HD22	1:B:465:GLU:HB3	2.02	0.42
2:A:500:HEM:O1A	3:A:600:H4B:N3	2.49	0.42
1:A:68:PRO:HB2	1:A:70:PHE:HD1	1.85	0.41
2:B:500:HEM:HBA2	4:B:800:HW1:H24	2.03	0.41
1:B:240:ARG:HD2	1:B:241:GLY:O	2.21	0.41
1:A:392:THR:HB	1:B:423:HIS:HB2	2.03	0.40
2:B:500:HEM:NC	4:B:800:HW1:H34	2.35	0.40
4:A:800:HW1:H16	4:A:800:HW1:H19	1.80	0.40

There are no symmetry-related clashes.

## 5.3 Torsion angles

### 5.3.1 Protein backbone

In the following table, the Percentiles column shows the percent Ramachandran outliers of the chain as a percentile score with respect to all X-ray entries followed by that with respect to entries of similar resolution.

The Analysed column shows the number of residues for which the backbone conformation was analysed, and the total number of residues.

Mol	Chain	Analysed	Favoured	Allowed	Outliers	Percentiles	
1	A	399/443 (90%)	391 (98%)	8 (2%)	0	100	100
1	B	397/443 (90%)	387 (98%)	10 (2%)	0	100	100
All	All	796/886 (90%)	778 (98%)	18 (2%)	0	100	100

There are no Ramachandran outliers to report.

### 5.3.2 Protein sidechains ⓘ

In the following table, the Percentiles column shows the percent sidechain outliers of the chain as a percentile score with respect to all X-ray entries followed by that with respect to entries of similar resolution.

The Analysed column shows the number of residues for which the sidechain conformation was analysed, and the total number of residues.

Mol	Chain	Analysed	Rotameric	Outliers	Percentiles	
1	A	342/375 (91%)	331 (97%)	11 (3%)	34	34
1	B	341/375 (91%)	328 (96%)	13 (4%)	28	27
All	All	683/750 (91%)	659 (96%)	24 (4%)	31	30

All (24) residues with a non-rotameric sidechain are listed below:

Mol	Chain	Res	Type
1	A	100	ARG
1	A	102	LEU
1	A	105	LEU
1	A	123	GLU
1	A	125	LEU
1	A	293	LEU
1	A	294	LEU
1	A	328	LEU
1	A	331	ARG
1	A	378	LEU
1	A	416	LYS
1	B	92	GLN
1	B	100	ARG
1	B	102	LEU
1	B	105	LEU
1	B	149	GLU
1	B	207	GLN
1	B	223	ARG

*Continued on next page...*

*Continued from previous page...*

Mol	Chain	Res	Type
1	B	225	ASN
1	B	240	ARG
1	B	278	GLN
1	B	330	LEU
1	B	378	LEU
1	B	389	THR

Sometimes sidechains can be flipped to improve hydrogen bonding and reduce clashes. All (12) such sidechains are listed below:

Mol	Chain	Res	Type
1	A	146	GLN
1	A	191	GLN
1	A	376	ASN
1	A	413	GLN
1	A	468	ASN
1	B	178	GLN
1	B	191	GLN
1	B	222	ASN
1	B	225	ASN
1	B	278	GLN
1	B	376	ASN
1	B	405	ASN

### 5.3.3 RNA ⓘ

There are no RNA molecules in this entry.

## 5.4 Non-standard residues in protein, DNA, RNA chains ⓘ

2 non-standard protein/DNA/RNA residues are modelled in this entry.

In the following table, the Counts columns list the number of bonds (or angles) for which Mogul statistics could be retrieved, the number of bonds (or angles) that are observed in the model and the number of bonds (or angles) that are defined in the Chemical Component Dictionary. The Link column lists molecule types, if any, to which the group is linked. The Z score for a bond length (or angle) is the number of standard deviations the observed value is removed from the expected value. A bond length (or angle) with  $|Z| > 2$  is considered an outlier worth inspection. RMSZ is the root-mean-square of all Z scores of the bond lengths (or angles).

Mol	Type	Chain	Res	Link	Bond lengths			Bond angles		
					Counts	RMSZ	$\# Z  > 2$	Counts	RMSZ	$\# Z  > 2$
1	CAS	B	384	1	5,8,9	1.23	0	1,9,11	0.11	0

Mol	Type	Chain	Res	Link	Bond lengths			Bond angles		
					Counts	RMSZ	# Z  > 2	Counts	RMSZ	# Z  > 2
1	CAS	A	384	1	5,8,9	1.12	0	1,9,11	0.40	0

In the following table, the Chirals column lists the number of chiral outliers, the number of chiral centers analysed, the number of these observed in the model and the number defined in the Chemical Component Dictionary. Similar counts are reported in the Torsion and Rings columns. '-' means no outliers of that kind were identified.

Mol	Type	Chain	Res	Link	Chirals	Torsions	Rings
1	CAS	B	384	1	-	0/0/7/9	-
1	CAS	A	384	1	-	0/0/7/9	-

There are no bond length outliers.

There are no bond angle outliers.

There are no chirality outliers.

There are no torsion outliers.

There are no ring outliers.

2 monomers are involved in 5 short contacts:

Mol	Chain	Res	Type	Clashes	Symm-Clashes
1	B	384	CAS	2	0
1	A	384	CAS	3	0

## 5.5 Carbohydrates [i](#)

There are no oligosaccharides in this entry.

## 5.6 Ligand geometry [i](#)

Of 11 ligands modelled in this entry, 1 is monoatomic - leaving 10 for Mogul analysis.

In the following table, the Counts columns list the number of bonds (or angles) for which Mogul statistics could be retrieved, the number of bonds (or angles) that are observed in the model and the number of bonds (or angles) that are defined in the Chemical Component Dictionary. The Link column lists molecule types, if any, to which the group is linked. The Z score for a bond length (or angle) is the number of standard deviations the observed value is removed from the expected value. A bond length (or angle) with  $|Z| > 2$  is considered an outlier worth inspection. RMSZ is the root-mean-square of all Z scores of the bond lengths (or angles).

Mol	Type	Chain	Res	Link	Bond lengths			Bond angles		
					Counts	RMSZ	# Z  > 2	Counts	RMSZ	# Z  > 2
5	ACT	A	861	-	3,3,3	0.82	0	3,3,3	0.72	0
5	ACT	A	860	-	3,3,3	0.78	0	3,3,3	0.65	0
2	HEM	B	500	1	41,50,50	2.34	15 (36%)	45,82,82	3.14	22 (48%)
2	HEM	A	500	1	41,50,50	2.34	17 (41%)	45,82,82	3.30	23 (51%)
3	H4B	B	600	-	16,18,18	1.04	2 (12%)	11,26,26	2.50	5 (45%)
4	HW1	A	800	-	29,30,30	0.70	0	34,40,40	2.08	8 (23%)
5	ACT	B	861	-	3,3,3	0.89	0	3,3,3	0.35	0
4	HW1	B	800	-	29,30,30	0.68	0	34,40,40	2.10	9 (26%)
5	ACT	B	860	-	3,3,3	0.75	0	3,3,3	0.75	0
3	H4B	A	600	-	16,18,18	0.85	0	11,26,26	2.88	6 (54%)

In the following table, the Chirals column lists the number of chiral outliers, the number of chiral centers analysed, the number of these observed in the model and the number defined in the Chemical Component Dictionary. Similar counts are reported in the Torsion and Rings columns. '-' means no outliers of that kind were identified.

Mol	Type	Chain	Res	Link	Chirals	Torsions	Rings
2	HEM	B	500	1	-	1/12/54/54	-
2	HEM	A	500	1	-	2/12/54/54	-
3	H4B	B	600	-	-	0/8/17/17	0/2/2/2
4	HW1	A	800	-	-	2/13/23/23	0/3/3/3
4	HW1	B	800	-	-	1/13/23/23	0/3/3/3
3	H4B	A	600	-	-	0/8/17/17	0/2/2/2

All (34) bond length outliers are listed below:

Mol	Chain	Res	Type	Atoms	Z	Observed(Å)	Ideal(Å)
2	A	500	HEM	C3C-C2C	6.65	1.49	1.40
2	B	500	HEM	C3C-C2C	5.81	1.48	1.40
2	B	500	HEM	C4A-NA	4.79	1.46	1.36
2	B	500	HEM	C3D-C2D	4.49	1.46	1.36
2	A	500	HEM	C4A-NA	4.42	1.45	1.36
2	A	500	HEM	C3D-C2D	4.38	1.46	1.36
2	B	500	HEM	C1A-NA	4.17	1.44	1.36
2	A	500	HEM	CHA-C4D	4.03	1.45	1.35
2	B	500	HEM	CHB-C1B	4.02	1.45	1.35
2	A	500	HEM	C1A-NA	4.01	1.44	1.36
2	B	500	HEM	C3B-C2B	3.98	1.45	1.37
2	B	500	HEM	CHA-C4D	3.96	1.45	1.35
2	A	500	HEM	C3B-C2B	3.63	1.44	1.37

Continued on next page...

*Continued from previous page...*

Mol	Chain	Res	Type	Atoms	Z	Observed(Å)	Ideal(Å)
2	A	500	HEM	C2A-C3A	3.41	1.47	1.37
2	A	500	HEM	C1B-NB	-3.29	1.34	1.40
2	A	500	HEM	CHB-C1B	3.19	1.43	1.35
2	B	500	HEM	C1B-NB	-3.16	1.34	1.40
2	B	500	HEM	C2A-C3A	3.12	1.46	1.37
2	B	500	HEM	C2C-C1C	3.09	1.49	1.42
2	B	500	HEM	FE-ND	2.78	2.10	1.96
2	A	500	HEM	C4D-ND	-2.64	1.35	1.40
2	A	500	HEM	FE-NB	2.61	2.09	1.96
2	A	500	HEM	C2C-C1C	2.56	1.48	1.42
2	B	500	HEM	C4D-ND	-2.54	1.35	1.40
3	B	600	H4B	C4A-C4	-2.53	1.38	1.41
2	B	500	HEM	FE-NB	2.53	2.09	1.96
2	A	500	HEM	C4D-C3D	2.34	1.49	1.45
3	B	600	H4B	C7-C6	2.16	1.54	1.52
2	B	500	HEM	CHC-C4B	2.13	1.47	1.41
2	B	500	HEM	C4D-C3D	2.13	1.48	1.45
2	A	500	HEM	C1D-ND	-2.09	1.34	1.38
2	A	500	HEM	C3B-C4B	2.08	1.49	1.44
2	A	500	HEM	FE-ND	2.06	2.07	1.96
2	A	500	HEM	C1B-C2B	2.06	1.48	1.44

All (73) bond angle outliers are listed below:

Mol	Chain	Res	Type	Atoms	Z	Observed(°)	Ideal(°)
2	A	500	HEM	C3B-C2B-C1B	-9.06	99.76	106.49
2	A	500	HEM	C2B-C1B-NB	8.83	120.30	109.84
2	B	500	HEM	C3B-C2B-C1B	-7.83	100.68	106.49
2	B	500	HEM	C2D-C1D-ND	7.53	118.90	109.88
2	A	500	HEM	C2D-C1D-ND	7.18	118.49	109.88
2	B	500	HEM	CBA-CAA-C2A	-7.07	100.55	112.62
2	B	500	HEM	C2B-C1B-NB	6.62	117.68	109.84
4	B	800	HW1	C02-N01-C06	6.50	123.03	118.10
4	A	800	HW1	C02-N01-C06	6.39	122.94	118.10
2	B	500	HEM	C3D-C4D-ND	6.08	116.94	110.17
2	B	500	HEM	C1D-C2D-C3D	-5.78	100.88	106.96
2	A	500	HEM	C3D-C4D-ND	5.78	116.60	110.17
2	A	500	HEM	C1B-NB-C4B	-5.43	99.47	105.07
2	A	500	HEM	C1D-C2D-C3D	-5.28	101.41	106.96
2	B	500	HEM	C4D-ND-C1D	-5.00	99.91	105.07
2	A	500	HEM	CBA-CAA-C2A	-4.99	104.10	112.62
3	A	600	H4B	C8A-C4A-C4	4.99	119.00	114.57

*Continued on next page...*



*Continued from previous page...*

Mol	Chain	Res	Type	Atoms	Z	Observed(°)	Ideal(°)
4	A	800	HW1	C22-N21-C26	4.86	121.78	118.10
4	B	800	HW1	C22-N21-C26	4.68	121.65	118.10
2	B	500	HEM	CHD-C1D-C2D	-4.55	117.86	124.98
3	B	600	H4B	C8A-C4A-C4	4.28	118.37	114.57
2	A	500	HEM	C4D-ND-C1D	-4.22	100.71	105.07
3	A	600	H4B	C2-N3-C4	4.13	122.49	115.93
2	A	500	HEM	C4A-C3A-C2A	-3.90	104.29	107.00
3	A	600	H4B	C4-C4A-N5	3.83	122.34	119.12
4	B	800	HW1	C5'-N1'-C2'	3.80	114.40	105.42
3	A	600	H4B	N1-C2-N3	-3.70	119.62	125.42
4	A	800	HW1	C25-C26-N21	-3.65	119.03	122.90
4	A	800	HW1	C5'-N1'-C2'	3.60	113.92	105.42
2	A	500	HEM	CHD-C1D-C2D	-3.59	119.37	124.98
3	B	600	H4B	N1-C2-N3	-3.44	120.02	125.42
2	A	500	HEM	CHC-C4B-C3B	-3.32	119.48	124.57
2	A	500	HEM	CHB-C1B-C2B	-3.29	117.62	126.72
2	A	500	HEM	C4B-C3B-C2B	-3.28	104.51	107.11
3	B	600	H4B	C2-N3-C4	3.25	121.09	115.93
4	A	800	HW1	C05-C06-N01	-3.15	119.56	122.90
4	B	800	HW1	C05-C06-N01	-3.10	119.61	122.90
4	B	800	HW1	C4'-C5'-N1'	-3.05	100.09	105.20
3	B	600	H4B	C4-C4A-N5	3.03	121.66	119.12
2	B	500	HEM	CMD-C2D-C1D	3.01	129.62	125.04
2	B	500	HEM	C1B-NB-C4B	-2.98	102.00	105.07
4	A	800	HW1	C4'-C5'-N1'	-2.91	100.32	105.20
2	A	500	HEM	C4D-C3D-C2D	-2.91	102.66	106.90
2	A	500	HEM	CAD-C3D-C4D	2.81	129.57	124.66
2	B	500	HEM	C4B-C3B-C2B	-2.80	104.89	107.11
2	B	500	HEM	C4A-C3A-C2A	-2.79	105.05	107.00
2	A	500	HEM	CMB-C2B-C1B	2.77	129.26	125.04
2	B	500	HEM	CHA-C4D-C3D	-2.77	120.13	125.33
2	B	500	HEM	CHB-C1B-NB	-2.76	120.97	124.38
2	B	500	HEM	CMB-C2B-C1B	2.67	129.11	125.04
4	B	800	HW1	C25-C26-N21	-2.65	120.09	122.90
3	A	600	H4B	C2-N1-C8A	2.64	120.46	114.54
3	B	600	H4B	C2-N1-C8A	2.64	120.45	114.54
4	B	800	HW1	C14-C26-N21	2.62	119.85	115.95
2	B	500	HEM	CAD-C3D-C4D	2.55	129.12	124.66
4	A	800	HW1	C04-C05-C06	-2.53	118.66	120.32
2	A	500	HEM	O1D-CGD-CBD	-2.49	115.07	123.08
2	A	500	HEM	CMD-C2D-C1D	2.49	128.82	125.04
3	A	600	H4B	N2-C2-N1	2.48	121.11	117.25

*Continued on next page...*

*Continued from previous page...*

Mol	Chain	Res	Type	Atoms	Z	Observed(°)	Ideal(°)
2	B	500	HEM	C4D-C3D-C2D	-2.44	103.34	106.90
2	B	500	HEM	CHC-C4B-C3B	-2.42	120.86	124.57
2	A	500	HEM	CMC-C2C-C3C	2.39	129.15	124.68
2	B	500	HEM	O1D-CGD-CBD	-2.34	115.56	123.08
2	A	500	HEM	CHA-C4D-ND	-2.30	121.54	124.38
4	A	800	HW1	C06-C08-C3'	-2.24	108.17	115.55
2	A	500	HEM	O2D-CGD-CBD	2.24	121.23	114.03
2	A	500	HEM	CHA-C4D-C3D	-2.14	121.31	125.33
2	A	500	HEM	CHD-C1D-ND	-2.11	122.14	124.43
2	B	500	HEM	C4B-CHC-C1C	2.08	125.30	122.56
2	B	500	HEM	CMC-C2C-C3C	2.06	128.54	124.68
4	B	800	HW1	C04-C05-C06	-2.04	118.98	120.32
2	B	500	HEM	CAD-CBD-CGD	-2.03	109.24	113.60
4	B	800	HW1	C24-C25-C26	-2.01	119.00	120.32

There are no chirality outliers.

All (6) torsion outliers are listed below:

Mol	Chain	Res	Type	Atoms
4	A	800	HW1	C5'-C4'-O09-C10
4	B	800	HW1	C5'-C4'-O09-C10
2	B	500	HEM	C2B-C3B-CAB-CBB
2	A	500	HEM	CAD-CBD-CGD-O2D
2	A	500	HEM	CAD-CBD-CGD-O1D
4	A	800	HW1	C11-C12-C13-C14

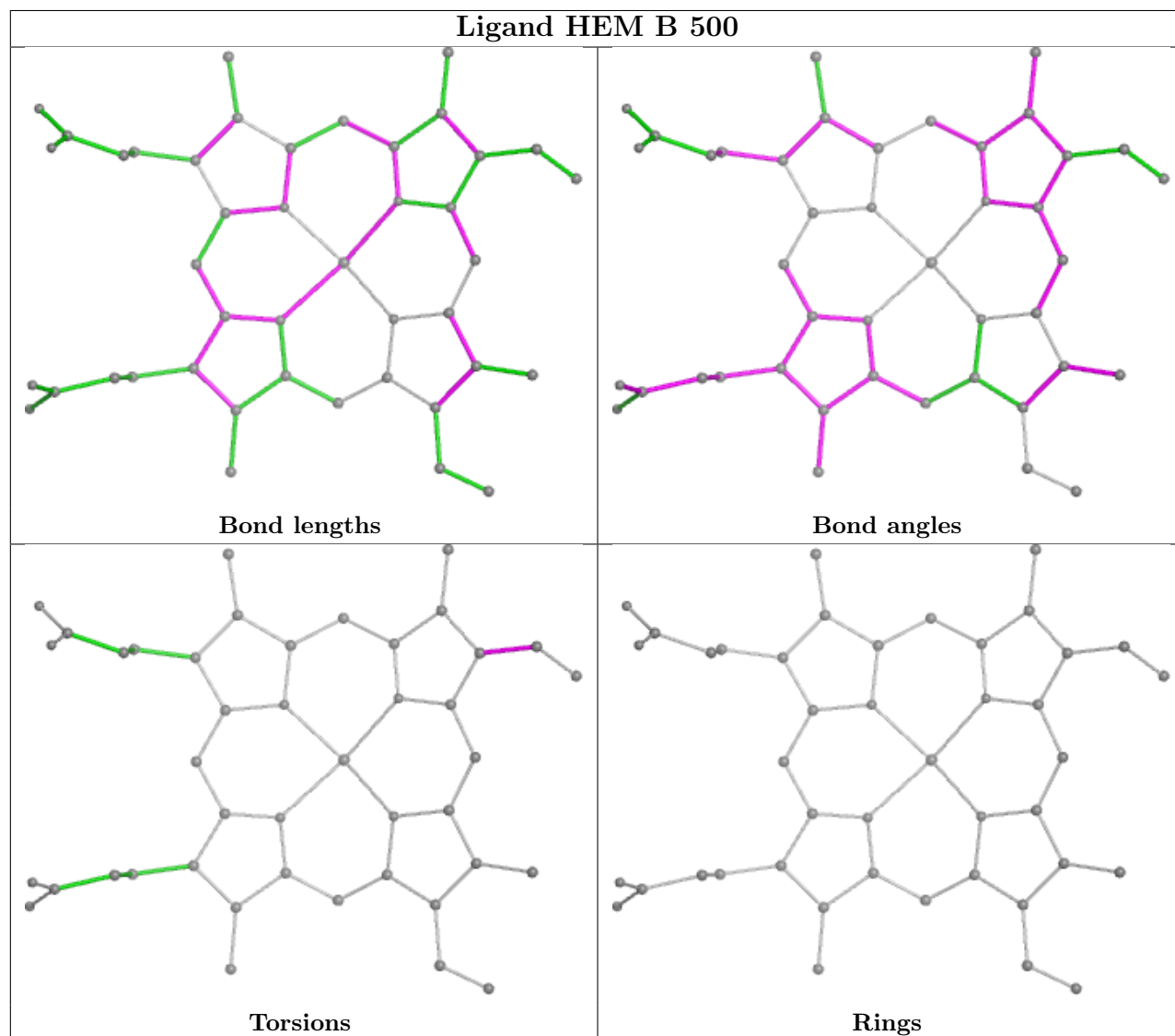
There are no ring outliers.

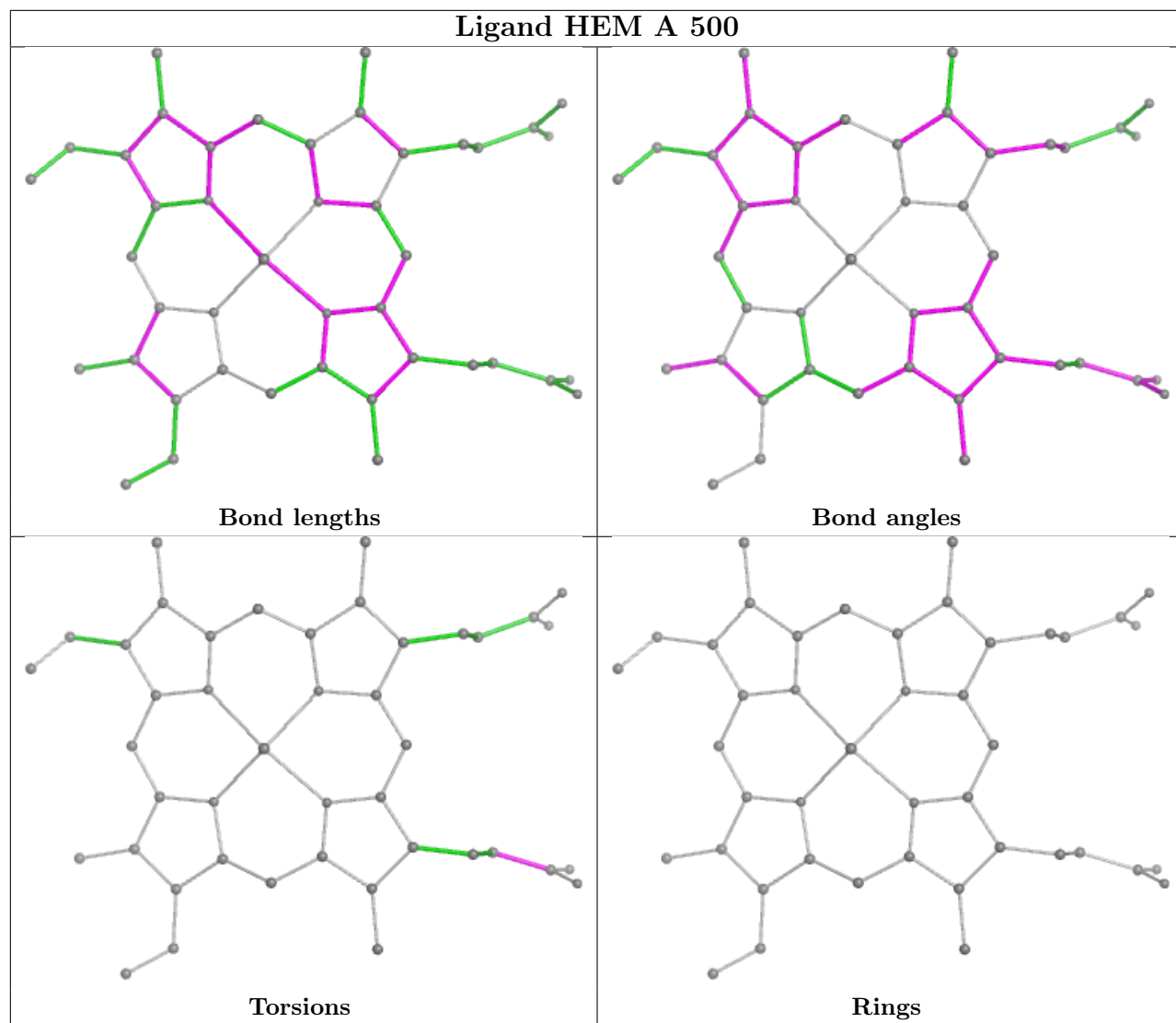
6 monomers are involved in 12 short contacts:

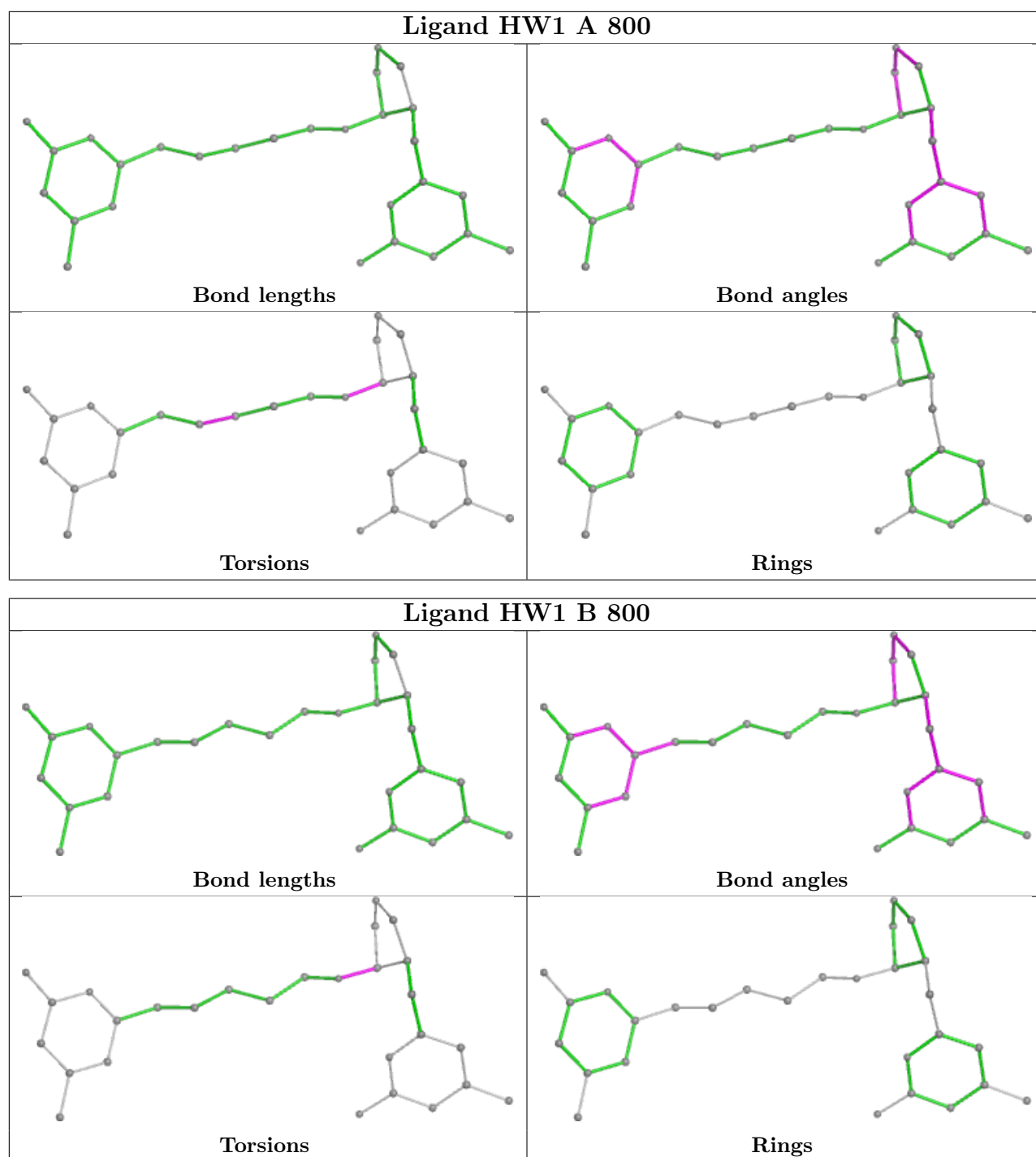
Mol	Chain	Res	Type	Clashes	Symm-Clashes
2	B	500	HEM	6	0
2	A	500	HEM	2	0
3	B	600	H4B	1	0
4	A	800	HW1	3	0
4	B	800	HW1	3	0
3	A	600	H4B	2	0

The following is a two-dimensional graphical depiction of Mogul quality analysis of bond lengths, bond angles, torsion angles, and ring geometry for all instances of the Ligand of Interest. In addition, ligands with molecular weight > 250 and outliers as shown on the validation Tables will also be included. For torsion angles, if less than 5% of the Mogul distribution of torsion angles is within 10 degrees of the torsion angle in question, then that torsion angle is considered an outlier.

Any bond that is central to one or more torsion angles identified as an outlier by Mogul will be highlighted in the graph. For rings, the root-mean-square deviation (RMSD) between the ring in question and similar rings identified by Mogul is calculated over all ring torsion angles. If the average RMSD is greater than 60 degrees and the minimal RMSD between the ring in question and any Mogul-identified rings is also greater than 60 degrees, then that ring is considered an outlier. The outliers are highlighted in purple. The color gray indicates Mogul did not find sufficient equivalents in the CSD to analyse the geometry.







## 5.7 Other polymers [i](#)

There are no such residues in this entry.

## 5.8 Polymer linkage issues [i](#)

There are no chain breaks in this entry.

## 6 Fit of model and data [i](#)

### 6.1 Protein, DNA and RNA chains [i](#)

In the following table, the column labelled ‘#RSRZ> 2’ contains the number (and percentage) of RSRZ outliers, followed by percent RSRZ outliers for the chain as percentile scores relative to all X-ray entries and entries of similar resolution. The OWAB column contains the minimum, median, 95<sup>th</sup> percentile and maximum values of the occupancy-weighted average B-factor per residue. The column labelled ‘Q< 0.9’ lists the number of (and percentage) of residues with an average occupancy less than 0.9.

Mol	Chain	Analysed	<RSRZ>	#RSRZ>2	OWAB(Å <sup>2</sup> )	Q<0.9
1	A	403/443 (90%)	-0.30	10 (2%) 58 63	34, 46, 77, 99	0
1	B	401/443 (90%)	-0.28	5 (1%) 76 79	34, 49, 81, 110	0
All	All	804/886 (90%)	-0.29	15 (1%) 66 70	34, 47, 80, 110	0

All (15) RSRZ outliers are listed below:

Mol	Chain	Res	Type	RSRZ
1	B	108	PRO	4.9
1	A	108	PRO	4.4
1	A	121	PRO	3.1
1	A	106	VAL	3.0
1	A	122	ALA	3.0
1	B	107	LEU	2.7
1	A	239	GLY	2.5
1	A	105	LEU	2.5
1	A	98	PRO	2.4
1	A	95	PRO	2.4
1	B	105	LEU	2.3
1	A	107	LEU	2.3
1	B	104	SER	2.2
1	A	101	CYS	2.1
1	B	92	GLN	2.1

### 6.2 Non-standard residues in protein, DNA, RNA chains [i](#)

In the following table, the Atoms column lists the number of modelled atoms in the group and the number defined in the chemical component dictionary. The B-factors column lists the minimum, median, 95<sup>th</sup> percentile and maximum values of B factors of atoms in the group. The column labelled ‘Q< 0.9’ lists the number of atoms with occupancy less than 0.9.

Mol	Type	Chain	Res	Atoms	RSCC	RSR	B-factors( $\text{\AA}^2$ )	Q<0.9
1	CAS	B	384	9/10	0.93	0.11	54,55,70,76	0
1	CAS	A	384	9/10	0.97	0.08	45,46,61,64	0

### 6.3 Carbohydrates [i](#)

There are no monosaccharides in this entry.

### 6.4 Ligands [i](#)

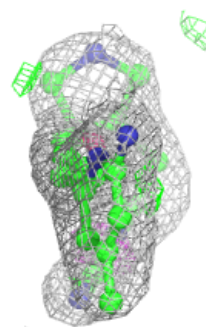
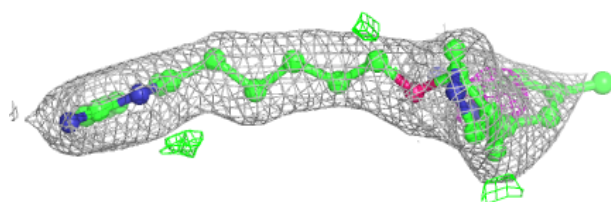
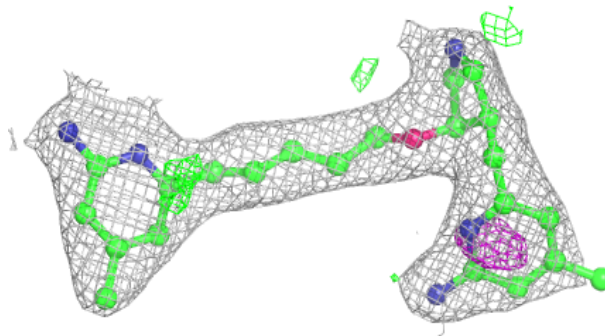
In the following table, the Atoms column lists the number of modelled atoms in the group and the number defined in the chemical component dictionary. The B-factors column lists the minimum, median, 95<sup>th</sup> percentile and maximum values of B factors of atoms in the group. The column labelled 'Q< 0.9' lists the number of atoms with occupancy less than 0.9.

Mol	Type	Chain	Res	Atoms	RSCC	RSR	B-factors( $\text{\AA}^2$ )	Q<0.9
4	HW1	B	800	28/28	0.93	0.10	36,47,60,63	0
5	ACT	B	860	4/4	0.94	0.14	56,60,62,64	0
5	ACT	B	861	4/4	0.94	0.14	42,45,46,46	0
5	ACT	A	861	4/4	0.95	0.09	41,42,43,45	0
4	HW1	A	800	28/28	0.95	0.08	34,47,55,56	0
5	ACT	A	860	4/4	0.95	0.12	52,59,59,61	0
3	H4B	A	600	17/17	0.96	0.05	39,42,46,50	0
3	H4B	B	600	17/17	0.97	0.05	38,42,45,45	0
2	HEM	A	500	43/43	0.98	0.06	30,32,42,51	0
2	HEM	B	500	43/43	0.99	0.06	33,37,44,50	0
6	ZN	B	1483	1/1	0.99	0.10	49,49,49,49	1

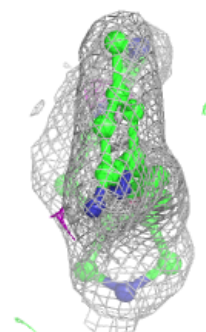
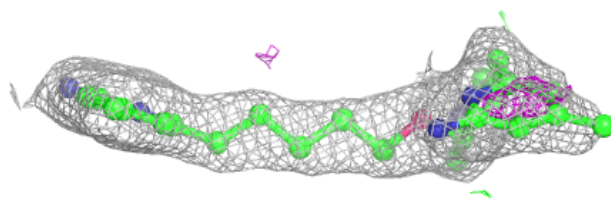
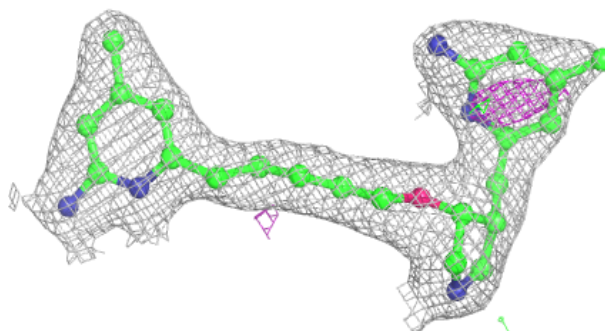
The following is a graphical depiction of the model fit to experimental electron density of all instances of the Ligand of Interest. In addition, ligands with molecular weight > 250 and outliers as shown on the geometry validation Tables will also be included. Each fit is shown from different orientation to approximate a three-dimensional view.

**Electron density around HW1 B 800:**

$2mF_o-DF_c$  (at 0.7 rmsd) in gray  
 $mF_o-DF_c$  (at 3 rmsd) in purple (negative)  
and green (positive)

**Electron density around HW1 A 800:**

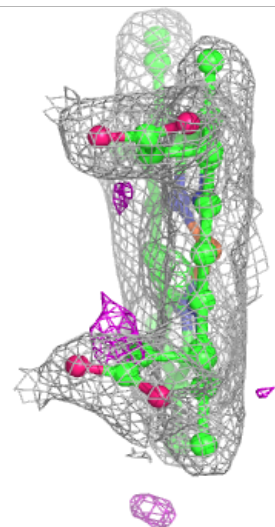
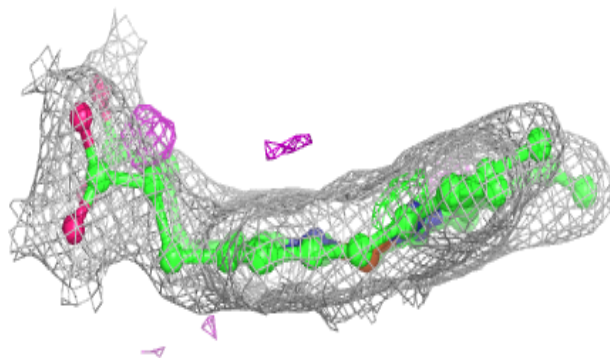
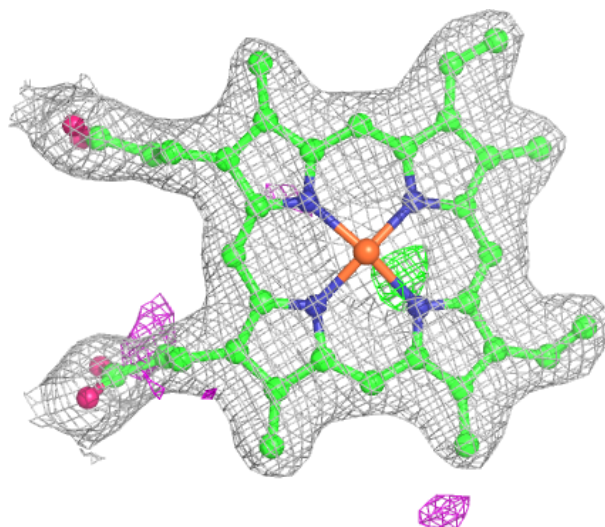
$2mF_o-DF_c$  (at 0.7 rmsd) in gray  
 $mF_o-DF_c$  (at 3 rmsd) in purple (negative)  
and green (positive)

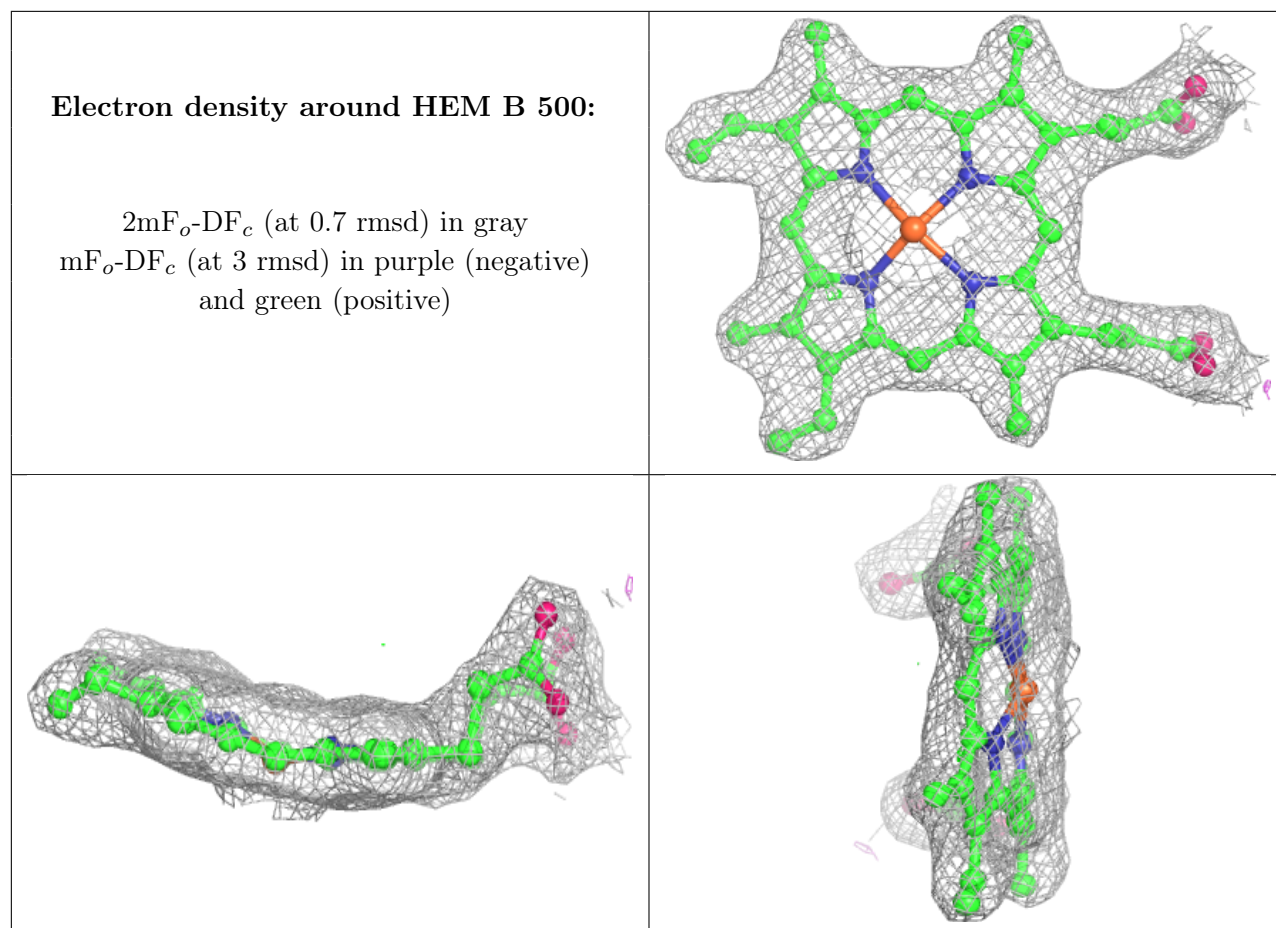




**Electron density around HEM A 500:**

$2mF_o-DF_c$  (at 0.7 rmsd) in gray  
 $mF_o-DF_c$  (at 3 rmsd) in purple (negative)  
and green (positive)





## 6.5 Other polymers [i](#)

There are no such residues in this entry.