



Full wwPDB X-ray Structure Validation Report ⓘ

Jun 12, 2025 – 02:06 PM EDT

PDB ID : 9CUD / pdb_00009cud
Title : Human STING G230A/R293Q variant bound to diABZI-i
Authors : Critton, D.A.
Deposited on : 2024-07-26
Resolution : 1.53 Å(reported)

This is a Full wwPDB X-ray Structure Validation Report for a publicly released PDB entry.

We welcome your comments at validation@mail.wwpdb.org

A user guide is available at

<https://www.wwpdb.org/validation/2017/XrayValidationReportHelp>

with specific help available everywhere you see the ⓘ symbol.

The types of validation reports are described at

<http://www.wwpdb.org/validation/2017/FAQs#types>.

The following versions of software and data (see [references ⓘ](#)) were used in the production of this report:

MolProbity : 4-5-2 with Phenix2.0rc1
Mogul : 2022.3.0, CSD as543be (2022)
Xtriage (Phenix) : 2.0rc1
EDS : 3.0
buster-report : 1.1.7 (2018)
Percentile statistics : 20231227.v01 (using entries in the PDB archive December 27th 2023)
CCP4 : 9.0.006 (Gargrove)
Density-Fitness : 1.0.12
Ideal geometry (proteins) : Engh & Huber (2001)
Ideal geometry (DNA, RNA) : Parkinson et al. (1996)
Validation Pipeline (wwPDB-VP) : 2.43.1

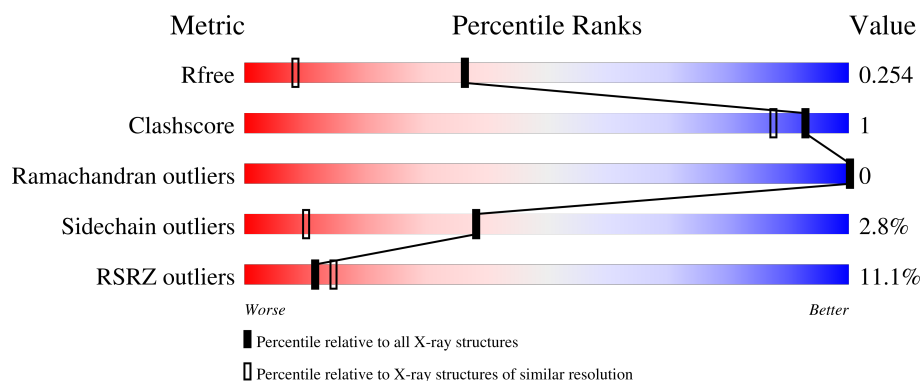
1 Overall quality at a glance

The following experimental techniques were used to determine the structure:

X-RAY DIFFRACTION

The reported resolution of this entry is 1.53 Å.

Percentile scores (ranging between 0-100) for global validation metrics of the entry are shown in the following graphic. The table shows the number of entries on which the scores are based.



Metric	Whole archive (#Entries)	Similar resolution (#Entries, resolution range(Å))
R_{free}	164625	3511 (1.56-1.52)
Clashscore	180529	3784 (1.56-1.52)
Ramachandran outliers	177936	3720 (1.56-1.52)
Sidechain outliers	177891	3717 (1.56-1.52)
RSRZ outliers	164620	3510 (1.56-1.52)

The table below summarises the geometric issues observed across the polymeric chains and their fit to the electron density. The red, orange, yellow and green segments of the lower bar indicate the fraction of residues that contain outliers for ≥ 3 , 2, 1 and 0 types of geometric quality criteria respectively. A grey segment represents the fraction of residues that are not modelled. The numeric value for each fraction is indicated below the corresponding segment, with a dot representing fractions $\leq 5\%$. The upper red bar (where present) indicates the fraction of residues that have poor fit to the electron density. The numeric value is given above the bar.

Mol	Chain	Length	Quality of chain
1	A	210	<div> <div>12%</div> <div>70%</div> <div>26%</div> </div>
1	B	210	<div> <div>5%</div> <div>71%</div> <div>25%</div> </div>

2 Entry composition

There are 3 unique types of molecules in this entry. The entry contains 5444 atoms, of which 2518 are hydrogens and 0 are deuteriums.

In the tables below, the ZeroOcc column contains the number of atoms modelled with zero occupancy, the AltConf column contains the number of residues with at least one atom in alternate conformation and the Trace column contains the number of residues modelled with at most 2 atoms.

- Molecule 1 is a protein called Stimulator of interferon genes protein.

Mol	Chain	Residues	Atoms						ZeroOcc	AltConf	Trace
1	A	156	Total	C	H	N	O	S	1190	3	0
			2425	795	1190	209	225	6			
1	B	158	Total	C	H	N	O	S	1224	3	0
			2478	804	1224	211	233	6			

There are 52 discrepancies between the modelled and reference sequences:

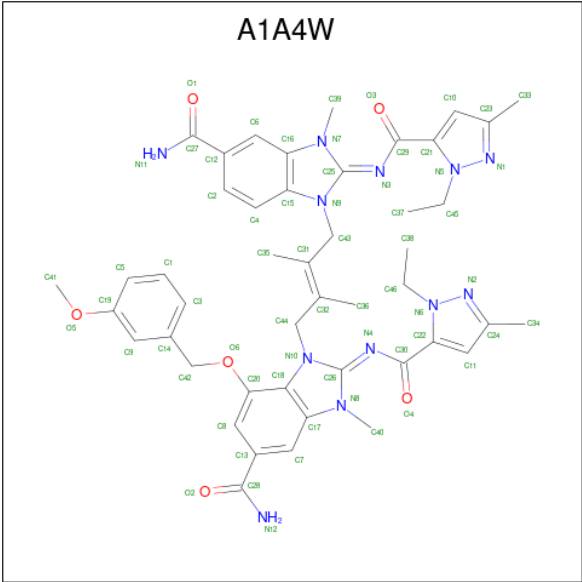
Chain	Residue	Modelled	Actual	Comment	Reference
A	132	MET	-	initiating methionine	UNP Q86WV6
A	133	GLY	-	expression tag	UNP Q86WV6
A	134	SER	-	expression tag	UNP Q86WV6
A	135	SER	-	expression tag	UNP Q86WV6
A	136	HIS	-	expression tag	UNP Q86WV6
A	137	HIS	-	expression tag	UNP Q86WV6
A	138	HIS	-	expression tag	UNP Q86WV6
A	139	HIS	-	expression tag	UNP Q86WV6
A	140	HIS	-	expression tag	UNP Q86WV6
A	141	HIS	-	expression tag	UNP Q86WV6
A	142	SER	-	expression tag	UNP Q86WV6
A	143	SER	-	expression tag	UNP Q86WV6
A	144	GLY	-	expression tag	UNP Q86WV6
A	145	GLU	-	expression tag	UNP Q86WV6
A	146	THR	-	expression tag	UNP Q86WV6
A	147	VAL	-	expression tag	UNP Q86WV6
A	148	ARG	-	expression tag	UNP Q86WV6
A	149	PHE	-	expression tag	UNP Q86WV6
A	150	GLN	-	expression tag	UNP Q86WV6
A	151	GLY	-	expression tag	UNP Q86WV6
A	152	HIS	-	expression tag	UNP Q86WV6
A	153	MET	-	expression tag	UNP Q86WV6
A	154	SER	-	expression tag	UNP Q86WV6
A	230	ALA	GLY	variant	UNP Q86WV6
A	232	ARG	HIS	conflict	UNP Q86WV6

Continued on next page...

Continued from previous page...

Chain	Residue	Modelled	Actual	Comment	Reference
A	293	GLN	ARG	variant	UNP Q86WV6
B	132	MET	-	initiating methionine	UNP Q86WV6
B	133	GLY	-	expression tag	UNP Q86WV6
B	134	SER	-	expression tag	UNP Q86WV6
B	135	SER	-	expression tag	UNP Q86WV6
B	136	HIS	-	expression tag	UNP Q86WV6
B	137	HIS	-	expression tag	UNP Q86WV6
B	138	HIS	-	expression tag	UNP Q86WV6
B	139	HIS	-	expression tag	UNP Q86WV6
B	140	HIS	-	expression tag	UNP Q86WV6
B	141	HIS	-	expression tag	UNP Q86WV6
B	142	SER	-	expression tag	UNP Q86WV6
B	143	SER	-	expression tag	UNP Q86WV6
B	144	GLY	-	expression tag	UNP Q86WV6
B	145	GLU	-	expression tag	UNP Q86WV6
B	146	THR	-	expression tag	UNP Q86WV6
B	147	VAL	-	expression tag	UNP Q86WV6
B	148	ARG	-	expression tag	UNP Q86WV6
B	149	PHE	-	expression tag	UNP Q86WV6
B	150	GLN	-	expression tag	UNP Q86WV6
B	151	GLY	-	expression tag	UNP Q86WV6
B	152	HIS	-	expression tag	UNP Q86WV6
B	153	MET	-	expression tag	UNP Q86WV6
B	154	SER	-	expression tag	UNP Q86WV6
B	230	ALA	GLY	variant	UNP Q86WV6
B	232	ARG	HIS	conflict	UNP Q86WV6
B	293	GLN	ARG	variant	UNP Q86WV6

- Molecule 2 is (2E)-1-[(2E)-4-{(2E)-5-carbamoyl-2-[(1-ethyl-3-methyl-1H-pyrazole-5-carbonyl)imino]-3-methyl-2,3-dihydro-1H-1,3-benzimidazol-1-yl}-2,3-dimethylbut-2-en-1-yl]-2-[(1-ethyl-3-methyl-1H-pyrazole-5-carbonyl)imino]-7-[(3-methoxyphenyl)methoxy]-3-methyl-2,3-dihydro-1H-1,3-benzimidazole-5-carboxamide (CCD ID: A1A4W) (formula: C₄₆H₅₂N₁₂O₆) (labeled as "Ligand of Interest" by depositor).



Mol	Chain	Residues	Atoms					ZeroOcc	AltConf
2	A	1	Total	C	H	N	O	104	1
			232	92	104	24	12		

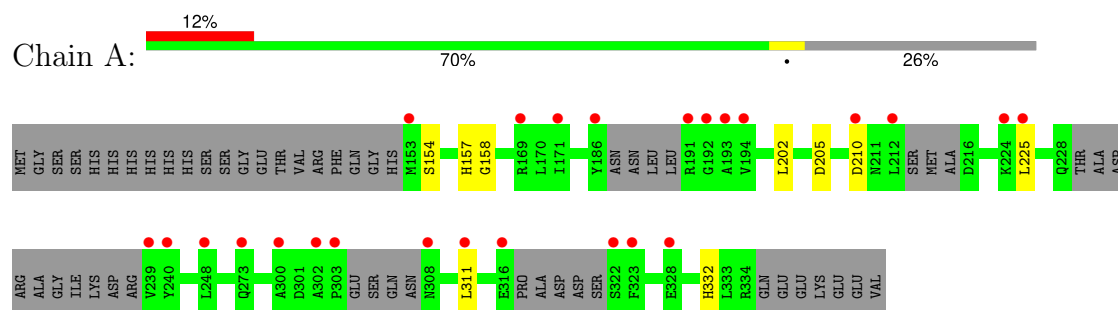
- Molecule 3 is water.

Mol	Chain	Residues	Atoms		ZeroOcc	AltConf
3	A	142	Total	O	0	0
			142	142		
3	B	167	Total	O	0	0
			167	167		

3 Residue-property plots [i](#)

These plots are drawn for all protein, RNA, DNA and oligosaccharide chains in the entry. The first graphic for a chain summarises the proportions of the various outlier classes displayed in the second graphic. The second graphic shows the sequence view annotated by issues in geometry and electron density. Residues are color-coded according to the number of geometric quality criteria for which they contain at least one outlier: green = 0, yellow = 1, orange = 2 and red = 3 or more. A red dot above a residue indicates a poor fit to the electron density ($RSRZ > 2$). Stretches of 2 or more consecutive residues without any outlier are shown as a green connector. Residues present in the sample, but not in the model, are shown in grey.

- Molecule 1: Stimulator of interferon genes protein



- Molecule 1: Stimulator of interferon genes protein



4 Data and refinement statistics

Property	Value	Source
Space group	P 21 21 2	Depositor
Cell constants a, b, c, α , β , γ	80.07Å 122.95Å 36.45Å 90.00° 90.00° 90.00°	Depositor
Resolution (Å)	21.53 – 1.53 21.53 – 1.53	Depositor EDS
% Data completeness (in resolution range)	72.3 (21.53-1.53) 74.6 (21.53-1.53)	Depositor EDS
R_{merge}	(Not available)	Depositor
R_{sym}	(Not available)	Depositor
$\langle I/\sigma(I) \rangle$ ¹	1.79 (at 1.52Å)	Xtriage
Refinement program	BUSTER 2.11.8 (16-JUL-2021)	Depositor
R, R_{free}	0.226 , 0.258 0.223 , 0.254	Depositor DCC
R_{free} test set	15758 reflections (5.06%)	wwPDB-VP
Wilson B-factor (Å ²)	18.4	Xtriage
Anisotropy	0.047	Xtriage
Bulk solvent k_{sol} (e/Å ³), B_{sol} (Å ²)	0.37 , 51.1	EDS
L-test for twinning ²	$\langle L \rangle = 0.50$, $\langle L^2 \rangle = 0.33$	Xtriage
Estimated twinning fraction	No twinning to report.	Xtriage
F_o, F_c correlation	0.94	EDS
Total number of atoms	5444	wwPDB-VP
Average B, all atoms (Å ²)	21.0	wwPDB-VP

Xtriage's analysis on translational NCS is as follows: *The largest off-origin peak in the Patterson function is 6.28% of the height of the origin peak. No significant pseudotranslation is detected.*

¹Intensities estimated from amplitudes.

²Theoretical values of $\langle |L| \rangle$, $\langle L^2 \rangle$ for acentric reflections are 0.5, 0.333 respectively for untwinned datasets, and 0.375, 0.2 for perfectly twinned datasets.

5 Model quality [i](#)

5.1 Standard geometry [i](#)

Bond lengths and bond angles in the following residue types are not validated in this section: A1A4W

The Z score for a bond length (or angle) is the number of standard deviations the observed value is removed from the expected value. A bond length (or angle) with $|Z| > 5$ is considered an outlier worth inspection. RMSZ is the root-mean-square of all Z scores of the bond lengths (or angles).

Mol	Chain	Bond lengths		Bond angles	
		RMSZ	$\# Z > 5$	RMSZ	$\# Z > 5$
1	A	0.74	1/1265 (0.1%)	0.91	1/1713 (0.1%)
1	B	0.71	0/1284	0.89	3/1739 (0.2%)
All	All	0.72	1/2549 (0.0%)	0.90	4/3452 (0.1%)

All (1) bond length outliers are listed below:

Mol	Chain	Res	Type	Atoms	Z	Observed(Å)	Ideal(Å)
1	A	225	LEU	CA-C	5.03	1.59	1.52

All (4) bond angle outliers are listed below:

Mol	Chain	Res	Type	Atoms	Z	Observed(°)	Ideal(°)
1	B	205	ASP	CA-CB-CG	6.03	118.63	112.60
1	A	205	ASP	CA-CB-CG	5.46	118.06	112.60
1	B	273	GLN	CG-CD-NE2	5.29	124.34	116.40
1	B	273	GLN	OE1-CD-NE2	-5.08	117.52	122.60

There are no chirality outliers.

There are no planarity outliers.

5.2 Too-close contacts [i](#)

In the following table, the Non-H and H(model) columns list the number of non-hydrogen atoms and hydrogen atoms in the chain respectively. The H(added) column lists the number of hydrogen atoms added and optimized by MolProbity. The Clashes column lists the number of clashes within the asymmetric unit, whereas Symm-Clashes lists symmetry-related clashes.

Mol	Chain	Non-H	H(model)	H(added)	Clashes	Symm-Clashes
1	A	1235	1190	1192	5	0

Continued on next page...

Continued from previous page...

Mol	Chain	Non-H	H(model)	H(added)	Clashes	Symm-Clashes
1	B	1254	1224	1226	2	0
2	A	128	104	0	1	0
3	A	142	0	0	2	0
3	B	167	0	0	2	0
All	All	2926	2518	2418	7	0

The all-atom clashscore is defined as the number of clashes found per 1000 atoms (including hydrogen atoms). The all-atom clashscore for this structure is 1.

All (7) close contacts within the same asymmetric unit are listed below, sorted by their clash magnitude.

Atom-1	Atom-2	Interatomic distance (Å)	Clash overlap (Å)
1:A:154:SER:OG	1:A:157:HIS:ND1	2.25	0.68
1:B:332:HIS:HE1	3:B:409:HOH:O	1.93	0.51
2:A:401[A]:A1A4W:O4	1:B:263:THR:OG1	2.28	0.49
1:A:158:GLY:HA3	3:B:420:HOH:O	2.14	0.48
1:A:202:LEU:CD1	1:A:311:LEU:HB3	2.46	0.45
1:A:332:HIS:HD2	3:A:629:HOH:O	2.01	0.42
1:A:332:HIS:HE1	3:A:503:HOH:O	2.02	0.42

There are no symmetry-related clashes.

5.3 Torsion angles [i](#)

5.3.1 Protein backbone [i](#)

In the following table, the Percentiles column shows the percent Ramachandran outliers of the chain as a percentile score with respect to all X-ray entries followed by that with respect to entries of similar resolution.

The Analysed column shows the number of residues for which the backbone conformation was analysed, and the total number of residues.

Mol	Chain	Analysed	Favoured	Allowed	Outliers	Percentiles	
1	A	146/210 (70%)	144 (99%)	2 (1%)	0	100	100
1	B	151/210 (72%)	150 (99%)	1 (1%)	0	100	100
All	All	297/420 (71%)	294 (99%)	3 (1%)	0	100	100

There are no Ramachandran outliers to report.

5.3.2 Protein sidechains ⓘ

In the following table, the Percentiles column shows the percent sidechain outliers of the chain as a percentile score with respect to all X-ray entries followed by that with respect to entries of similar resolution.

The Analysed column shows the number of residues for which the sidechain conformation was analysed, and the total number of residues.

Mol	Chain	Analysed	Rotameric	Outliers	Percentiles	
1	A	127/183 (69%)	126 (99%)	1 (1%)	79	62
1	B	132/183 (72%)	125 (95%)	7 (5%)	19	2
All	All	259/366 (71%)	251 (97%)	8 (3%)	38	8

All (8) residues with a non-rotameric sidechain are listed below:

Mol	Chain	Res	Type
1	A	210	ASP
1	B	176	GLN
1	B	210	ASP
1	B	241[A]	SER
1	B	241[B]	SER
1	B	273	GLN
1	B	296	GLU
1	B	310	ARG

Sometimes sidechains can be flipped to improve hydrogen bonding and reduce clashes. All (7) such sidechains are listed below:

Mol	Chain	Res	Type
1	A	266	GLN
1	A	327	GLN
1	A	332	HIS
1	B	196	GLN
1	B	227	GLN
1	B	273	GLN
1	B	332	HIS

5.3.3 RNA ⓘ

There are no RNA molecules in this entry.

5.4 Non-standard residues in protein, DNA, RNA chains [i](#)

There are no non-standard protein/DNA/RNA residues in this entry.

5.5 Carbohydrates [i](#)

There are no oligosaccharides in this entry.

5.6 Ligand geometry [i](#)

2 ligands are modelled in this entry.

In the following table, the Counts columns list the number of bonds (or angles) for which Mogul statistics could be retrieved, the number of bonds (or angles) that are observed in the model and the number of bonds (or angles) that are defined in the Chemical Component Dictionary. The Link column lists molecule types, if any, to which the group is linked. The Z score for a bond length (or angle) is the number of standard deviations the observed value is removed from the expected value. A bond length (or angle) with $|Z| > 2$ is considered an outlier worth inspection. RMSZ is the root-mean-square of all Z scores of the bond lengths (or angles).

Mol	Type	Chain	Res	Link	Bond lengths			Bond angles		
					Counts	RMSZ	$\# Z > 2$	Counts	RMSZ	$\# Z > 2$
2	A1A4W	A	401[B]	-	68,70,70	0.46	0	91,103,103	0.87	4 (4%)
2	A1A4W	A	401[A]	-	68,70,70	0.41	0	91,103,103	0.97	5 (5%)

In the following table, the Chirals column lists the number of chiral outliers, the number of chiral centers analysed, the number of these observed in the model and the number defined in the Chemical Component Dictionary. Similar counts are reported in the Torsion and Rings columns. '-' means no outliers of that kind were identified.

Mol	Type	Chain	Res	Link	Chirals	Torsions	Rings
2	A1A4W	A	401[B]	-	-	6/39/47/47	0/7/7/7
2	A1A4W	A	401[A]	-	-	10/39/47/47	0/7/7/7

There are no bond length outliers.

All (9) bond angle outliers are listed below:

Mol	Chain	Res	Type	Atoms	Z	Observed(°)	Ideal(°)
2	A	401[A]	A1A4W	C29-N3-C25	4.10	129.04	120.03
2	A	401[A]	A1A4W	C30-N4-C26	3.81	128.41	120.03
2	A	401[B]	A1A4W	N7-C25-N3	2.71	134.88	125.84
2	A	401[A]	A1A4W	N7-C25-N3	2.37	133.75	125.84

Continued on next page...

Continued from previous page...

Mol	Chain	Res	Type	Atoms	Z	Observed(°)	Ideal(°)
2	A	401[A]	A1A4W	C17-C18-C20	-2.32	118.41	121.80
2	A	401[B]	A1A4W	N9-C25-N3	-2.28	115.97	126.14
2	A	401[A]	A1A4W	C7-C17-C18	2.28	122.30	118.80
2	A	401[B]	A1A4W	C7-C17-C18	2.20	122.18	118.80
2	A	401[B]	A1A4W	C17-C18-C20	-2.03	118.84	121.80

There are no chirality outliers.

All (16) torsion outliers are listed below:

Mol	Chain	Res	Type	Atoms
2	A	401[A]	A1A4W	O3-C29-N3-C25
2	A	401[A]	A1A4W	C35-C31-C43-N9
2	A	401[A]	A1A4W	C36-C32-C44-N10
2	A	401[B]	A1A4W	C35-C31-C43-N9
2	A	401[B]	A1A4W	C36-C32-C44-N10
2	A	401[B]	A1A4W	C9-C19-O5-C41
2	A	401[B]	A1A4W	C5-C19-O5-C41
2	A	401[A]	A1A4W	C9-C19-O5-C41
2	A	401[A]	A1A4W	C5-C19-O5-C41
2	A	401[A]	A1A4W	C6-C12-C27-N11
2	A	401[A]	A1A4W	C6-C12-C27-O1
2	A	401[A]	A1A4W	C2-C12-C27-N11
2	A	401[A]	A1A4W	C2-C12-C27-O1
2	A	401[B]	A1A4W	O3-C29-N3-C25
2	A	401[A]	A1A4W	O4-C30-N4-C26
2	A	401[B]	A1A4W	O4-C30-N4-C26

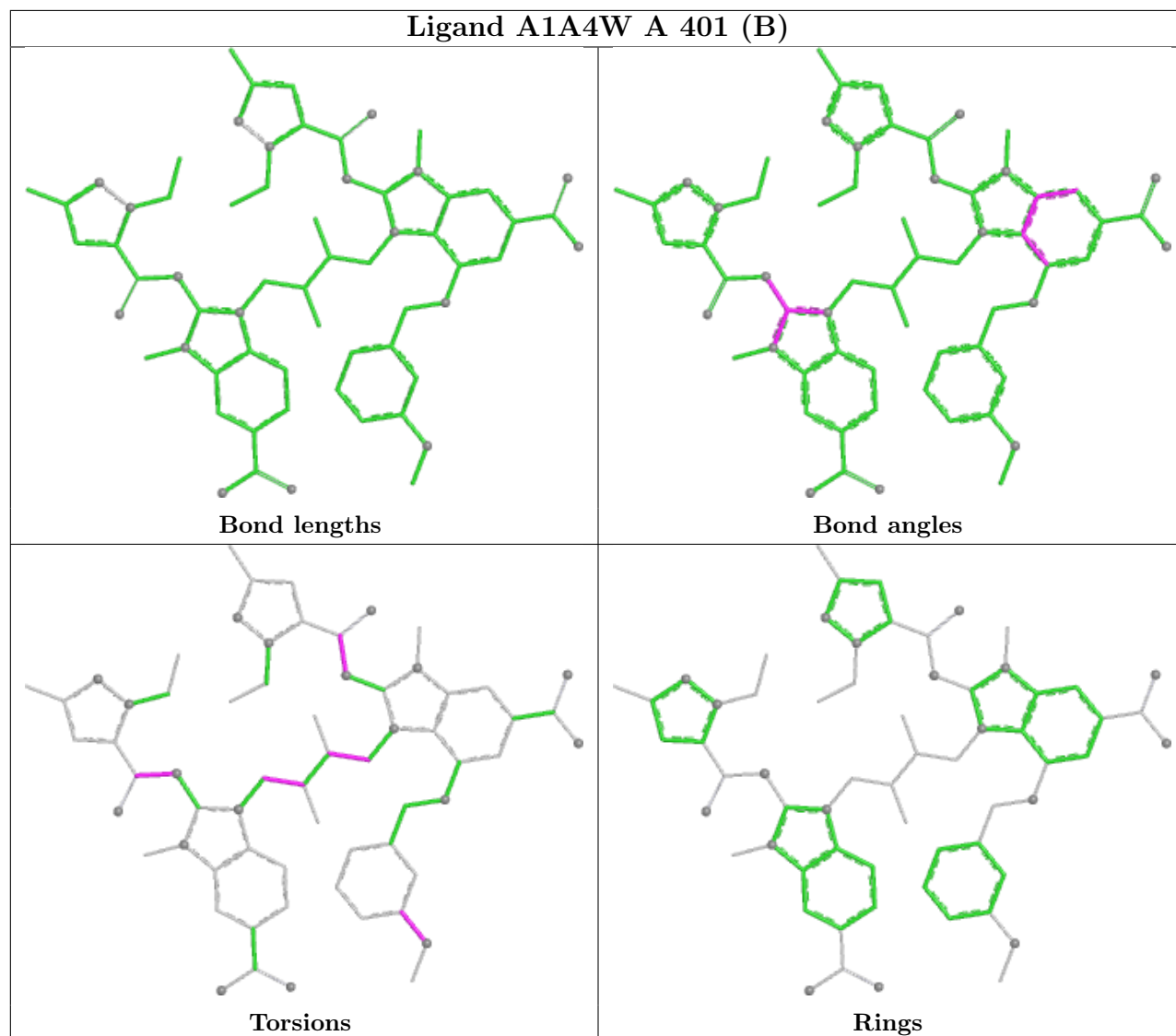
There are no ring outliers.

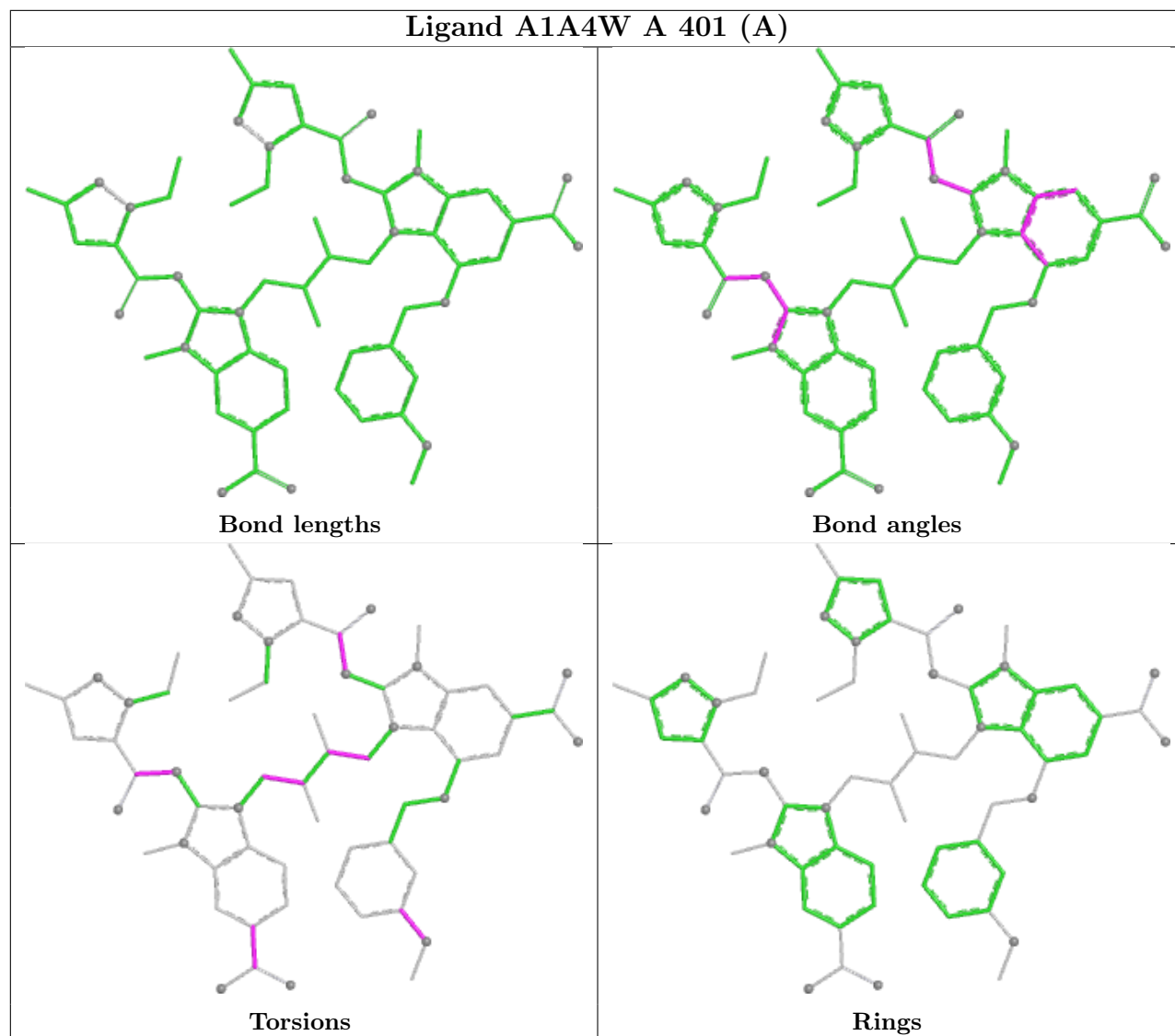
1 monomer is involved in 1 short contact:

Mol	Chain	Res	Type	Clashes	Symm-Clashes
2	A	401[A]	A1A4W	1	0

The following is a two-dimensional graphical depiction of Mogul quality analysis of bond lengths, bond angles, torsion angles, and ring geometry for all instances of the Ligand of Interest. In addition, ligands with molecular weight > 250 and outliers as shown on the validation Tables will also be included. For torsion angles, if less than 5% of the Mogul distribution of torsion angles is within 10 degrees of the torsion angle in question, then that torsion angle is considered an outlier. Any bond that is central to one or more torsion angles identified as an outlier by Mogul will be highlighted in the graph. For rings, the root-mean-square deviation (RMSD) between the ring in question and similar rings identified by Mogul is calculated over all ring torsion angles. If the average RMSD is greater than 60 degrees and the minimal RMSD between the ring in question and

any Mogul-identified rings is also greater than 60 degrees, then that ring is considered an outlier. The outliers are highlighted in purple. The color gray indicates Mogul did not find sufficient equivalents in the CSD to analyse the geometry.





5.7 Other polymers [i](#)

There are no such residues in this entry.

5.8 Polymer linkage issues [i](#)

There are no chain breaks in this entry.

6 Fit of model and data

6.1 Protein, DNA and RNA chains

In the following table, the column labelled ‘#RSRZ> 2’ contains the number (and percentage) of RSRZ outliers, followed by percent RSRZ outliers for the chain as percentile scores relative to all X-ray entries and entries of similar resolution. The OWAB column contains the minimum, median, 95th percentile and maximum values of the occupancy-weighted average B-factor per residue. The column labelled ‘Q< 0.9’ lists the number of (and percentage) of residues with an average occupancy less than 0.9.

Mol	Chain	Analysed	<RSRZ>	#RSRZ>2	OWAB(Å ²)	Q<0.9
1	A	156/210 (74%)	0.92	25 (16%) 6 6	5, 13, 26, 38	3 (1%)
1	B	158/210 (75%)	0.45	10 (6%) 27 33	5, 10, 20, 29	3 (1%)
All	All	314/420 (74%)	0.68	35 (11%) 12 15	5, 11, 24, 38	6 (1%)

All (35) RSRZ outliers are listed below:

Mol	Chain	Res	Type	RSRZ
1	A	191	ARG	5.1
1	A	303	PRO	5.0
1	A	302	ALA	4.8
1	A	193	ALA	3.9
1	A	212	LEU	3.8
1	A	171	ILE	3.7
1	B	153	MET	3.3
1	B	303	PRO	3.3
1	B	210	ASP	3.2
1	B	322	SER	3.1
1	B	310	ARG	3.0
1	A	308	ASN	3.0
1	A	323	PHE	3.0
1	A	240	TYR	2.9
1	A	328	GLU	2.9
1	A	186	TYR	2.7
1	A	224	LYS	2.7
1	A	239	VAL	2.7
1	A	322	SER	2.6
1	B	274	TYR	2.5
1	B	304	GLU	2.5
1	A	316	GLU	2.5
1	A	225	LEU	2.4
1	A	153	MET	2.4

Continued on next page...

Continued from previous page...

Mol	Chain	Res	Type	RSRZ
1	A	300	ALA	2.3
1	A	194	VAL	2.3
1	B	333	LEU	2.3
1	A	210	ASP	2.2
1	A	248	LEU	2.2
1	A	311	LEU	2.1
1	A	192	GLY	2.1
1	B	209	PRO	2.0
1	A	273	GLN	2.0
1	B	336	GLU	2.0
1	A	169	ARG	2.0

6.2 Non-standard residues in protein, DNA, RNA chains [i](#)

There are no non-standard protein/DNA/RNA residues in this entry.

6.3 Carbohydrates [i](#)

There are no monosaccharides in this entry.

6.4 Ligands [i](#)

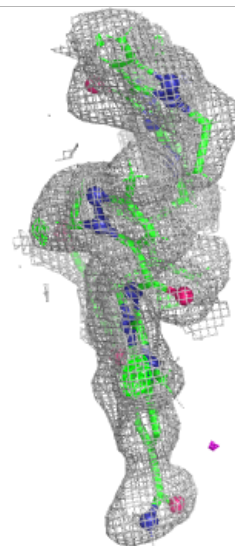
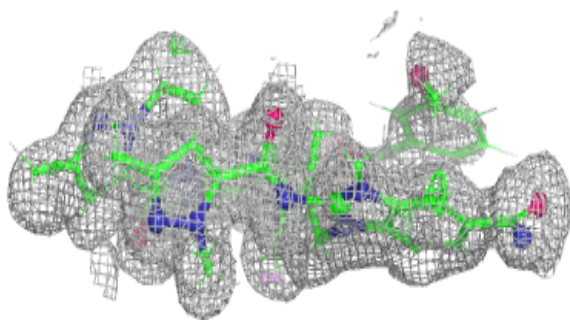
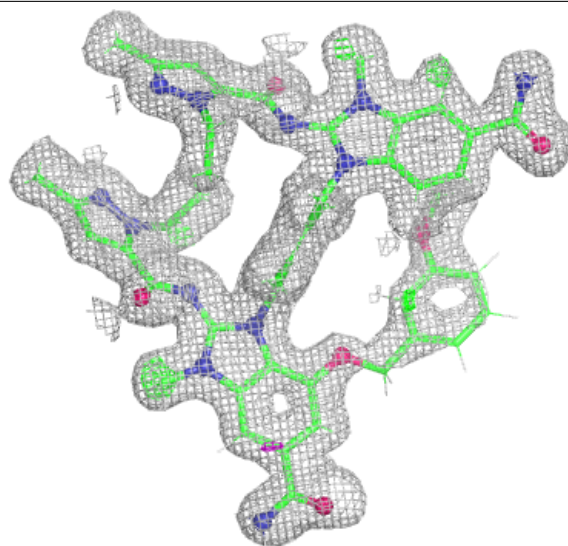
In the following table, the Atoms column lists the number of modelled atoms in the group and the number defined in the chemical component dictionary. The B-factors column lists the minimum, median, 95th percentile and maximum values of B factors of atoms in the group. The column labelled 'Q< 0.9' lists the number of atoms with occupancy less than 0.9.

Mol	Type	Chain	Res	Atoms	RSCC	RSR	B-factors(\AA^2)	Q<0.9
2	A1A4W	A	401[A]	64/64	0.85	0.12	24,26,30,32	116
2	A1A4W	A	401[B]	64/64	0.85	0.12	6,9,22,26	116

The following is a graphical depiction of the model fit to experimental electron density of all instances of the Ligand of Interest. In addition, ligands with molecular weight > 250 and outliers as shown on the geometry validation Tables will also be included. Each fit is shown from different orientation to approximate a three-dimensional view.

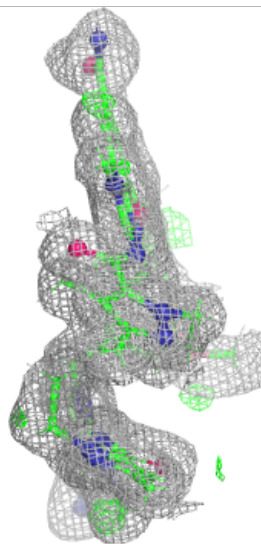
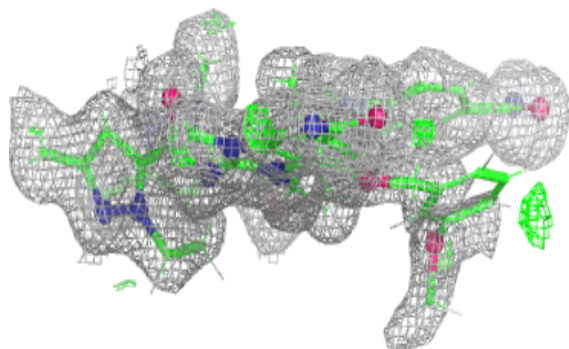
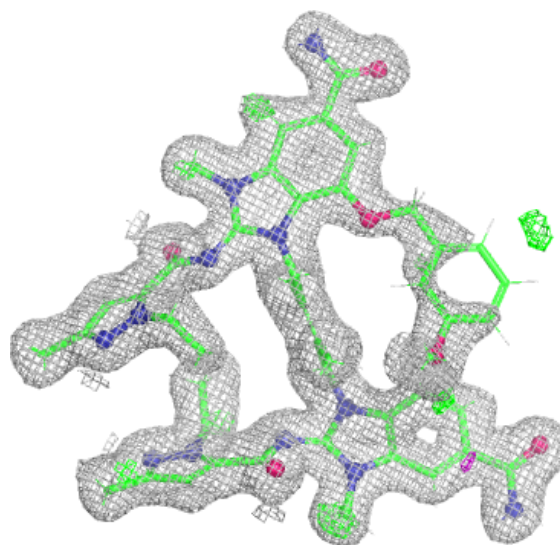
Electron density around A1A4W A 401 (A):

2mF_o-DF_c (at 0.7 rmsd) in gray
mF_o-DF_c (at 3 rmsd) in purple (negative)
and green (positive)



Electron density around A1A4W A 401 (B):

$2mF_o-DF_c$ (at 0.7 rmsd) in gray
 mF_o-DF_c (at 3 rmsd) in purple (negative)
and green (positive)



6.5 Other polymers [i](#)

There are no such residues in this entry.