



wwPDB X-ray Structure Validation Summary Report ⓘ

Jun 16, 2024 – 09:39 AM EDT

PDB ID : 5CTB
Title : Humanized yeast ACC carboxyltransferase domain bound to 6,7-dimethyl-1'-[(7-methyl-1H-indazol-5-yl)carbonyl]spiro[chromene-2,4'-piperidin]-4(3H)-one
Authors : Vajdos, F.F.
Deposited on : 2015-07-23
Resolution : 2.40 Å(reported)

This is a wwPDB X-ray Structure Validation Summary Report for a publicly released PDB entry.

We welcome your comments at validation@mail.wwpdb.org

A user guide is available at

<https://www.wwpdb.org/validation/2017/XrayValidationReportHelp>

with specific help available everywhere you see the ⓘ symbol.

The types of validation reports are described at

<http://www.wwpdb.org/validation/2017/FAQs#types>.

The following versions of software and data (see [references ⓘ](#)) were used in the production of this report:

MolProbity	:	4.02b-467
Mogul	:	1.8.5 (274361), CSD as541be (2020)
Xtriage (Phenix)	:	1.13
EDS	:	2.37.1
buster-report	:	1.1.7 (2018)
Percentile statistics	:	20191225.v01 (using entries in the PDB archive December 25th 2019)
Refmac	:	5.8.0158
CCP4	:	7.0.044 (Gargrove)
Ideal geometry (proteins)	:	Engh & Huber (2001)
Ideal geometry (DNA, RNA)	:	Parkinson et al. (1996)
Validation Pipeline (wwPDB-VP)	:	2.37.1

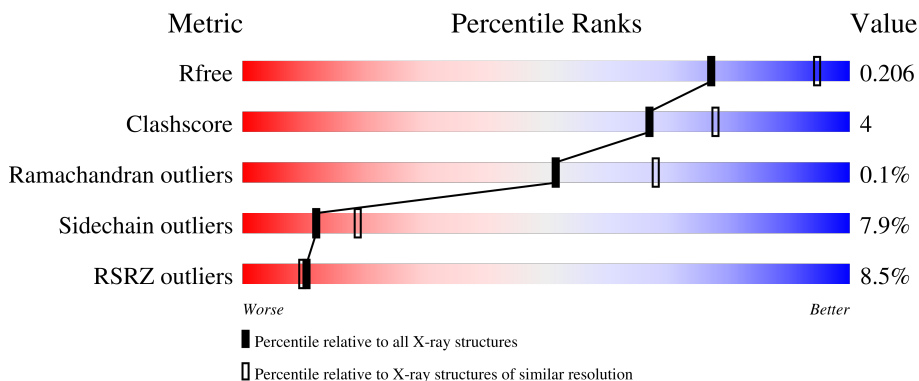
1 Overall quality at a glance

The following experimental techniques were used to determine the structure:

X-RAY DIFFRACTION

The reported resolution of this entry is 2.40 Å.

Percentile scores (ranging between 0-100) for global validation metrics of the entry are shown in the following graphic. The table shows the number of entries on which the scores are based.



Metric	Whole archive (#Entries)	Similar resolution (#Entries, resolution range(Å))
R_{free}	130704	3907 (2.40-2.40)
Clashscore	141614	4398 (2.40-2.40)
Ramachandran outliers	138981	4318 (2.40-2.40)
Sidechain outliers	138945	4319 (2.40-2.40)
RSRZ outliers	127900	3811 (2.40-2.40)

The table below summarises the geometric issues observed across the polymeric chains and their fit to the electron density. The red, orange, yellow and green segments of the lower bar indicate the fraction of residues that contain outliers for ≥ 3 , 2, 1 and 0 types of geometric quality criteria respectively. A grey segment represents the fraction of residues that are not modelled. The numeric value for each fraction is indicated below the corresponding segment, with a dot representing fractions $\leq 5\%$. The upper red bar (where present) indicates the fraction of residues that have poor fit to the electron density. The numeric value is given above the bar.

Mol	Chain	Length	Quality of chain
1	A	769	<div> <div>8%</div> <div>78%</div> <div>12%</div> <div>10%</div> </div>
1	B	769	<div> <div>7%</div> <div>75%</div> <div>11%</div> <div>12%</div> </div>
1	C	769	<div> <div>8%</div> <div>75%</div> <div>11%</div> <div>13%</div> </div>

2 Entry composition

There are 4 unique types of molecules in this entry. The entry contains 17717 atoms, of which 75 are hydrogens and 0 are deuteriums.

In the tables below, the ZeroOcc column contains the number of atoms modelled with zero occupancy, the AltConf column contains the number of residues with at least one atom in alternate conformation and the Trace column contains the number of residues modelled with at most 2 atoms.

- Molecule 1 is a protein called Acetyl-CoA carboxylase.

Mol	Chain	Residues	Atoms					ZeroOcc	AltConf	Trace
1	A	695	Total	C	N	O	S	0	0	0
			5502	3506	945	1034	17			
1	B	673	Total	C	N	O	S	0	0	0
			5358	3417	918	1006	17			
1	C	672	Total	C	N	O	S	0	0	0
			5296	3374	910	995	17			

There are 60 discrepancies between the modelled and reference sequences:

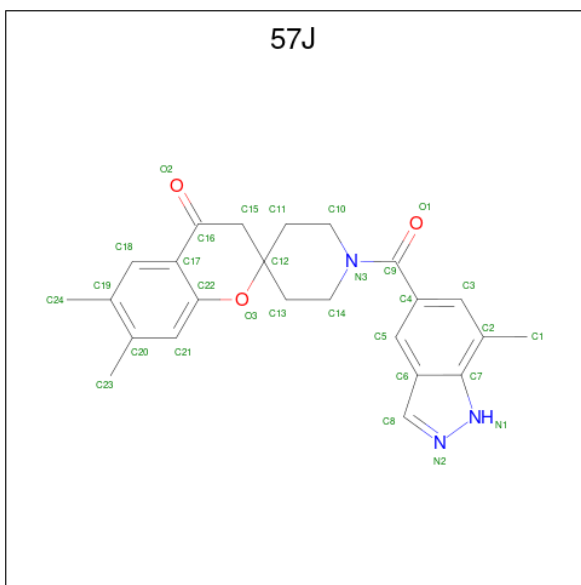
Chain	Residue	Modelled	Actual	Comment	Reference
A	1473	MET	-	expression tag	UNP Q00955
A	1474	ALA	-	expression tag	UNP Q00955
A	1475	SER	-	expression tag	UNP Q00955
A	1760	SER	PRO	engineered mutation	UNP Q00955
A	1762	LEU	ILE	engineered mutation	UNP Q00955
A	1765	VAL	MET	engineered mutation	UNP Q00955
A	1919	GLN	GLU	engineered mutation	UNP Q00955
A	1920	ALA	PRO	engineered mutation	UNP Q00955
A	1925	PHE	HIS	engineered mutation	UNP Q00955
A	2028	GLU	GLN	engineered mutation	UNP Q00955
A	2030	THR	MET	engineered mutation	UNP Q00955
A	2032	GLU	GLY	engineered mutation	UNP Q00955
A	2234	LEU	-	expression tag	UNP Q00955
A	2235	GLU	-	expression tag	UNP Q00955
A	2236	HIS	-	expression tag	UNP Q00955
A	2237	HIS	-	expression tag	UNP Q00955
A	2238	HIS	-	expression tag	UNP Q00955
A	2239	HIS	-	expression tag	UNP Q00955
A	2240	HIS	-	expression tag	UNP Q00955
A	2241	HIS	-	expression tag	UNP Q00955
B	1473	MET	-	expression tag	UNP Q00955
B	1474	ALA	-	expression tag	UNP Q00955
B	1475	SER	-	expression tag	UNP Q00955

Continued on next page...

Continued from previous page...

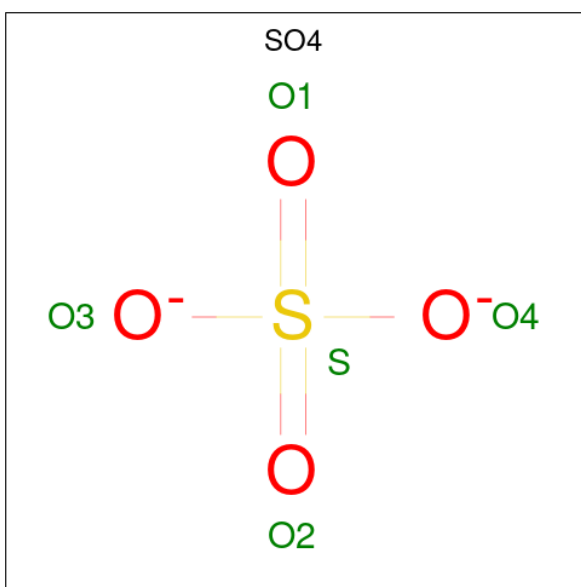
Chain	Residue	Modelled	Actual	Comment	Reference
B	1760	SER	PRO	engineered mutation	UNP Q00955
B	1762	LEU	ILE	engineered mutation	UNP Q00955
B	1765	VAL	MET	engineered mutation	UNP Q00955
B	1919	GLN	GLU	engineered mutation	UNP Q00955
B	1920	ALA	PRO	engineered mutation	UNP Q00955
B	1925	PHE	HIS	engineered mutation	UNP Q00955
B	2028	GLU	GLN	engineered mutation	UNP Q00955
B	2030	THR	MET	engineered mutation	UNP Q00955
B	2032	GLU	GLY	engineered mutation	UNP Q00955
B	2234	LEU	-	expression tag	UNP Q00955
B	2235	GLU	-	expression tag	UNP Q00955
B	2236	HIS	-	expression tag	UNP Q00955
B	2237	HIS	-	expression tag	UNP Q00955
B	2238	HIS	-	expression tag	UNP Q00955
B	2239	HIS	-	expression tag	UNP Q00955
B	2240	HIS	-	expression tag	UNP Q00955
B	2241	HIS	-	expression tag	UNP Q00955
C	1473	MET	-	expression tag	UNP Q00955
C	1474	ALA	-	expression tag	UNP Q00955
C	1475	SER	-	expression tag	UNP Q00955
C	1760	SER	PRO	engineered mutation	UNP Q00955
C	1762	LEU	ILE	engineered mutation	UNP Q00955
C	1765	VAL	MET	engineered mutation	UNP Q00955
C	1919	GLN	GLU	engineered mutation	UNP Q00955
C	1920	ALA	PRO	engineered mutation	UNP Q00955
C	1925	PHE	HIS	engineered mutation	UNP Q00955
C	2028	GLU	GLN	engineered mutation	UNP Q00955
C	2030	THR	MET	engineered mutation	UNP Q00955
C	2032	GLU	GLY	engineered mutation	UNP Q00955
C	2234	LEU	-	expression tag	UNP Q00955
C	2235	GLU	-	expression tag	UNP Q00955
C	2236	HIS	-	expression tag	UNP Q00955
C	2237	HIS	-	expression tag	UNP Q00955
C	2238	HIS	-	expression tag	UNP Q00955
C	2239	HIS	-	expression tag	UNP Q00955
C	2240	HIS	-	expression tag	UNP Q00955
C	2241	HIS	-	expression tag	UNP Q00955

- Molecule 2 is 6,7-dimethyl-1'-[(7-methyl-1H-indazol-5-yl)carbonyl]spiro[chromene-2,4'-piperidin]-4(3H)-one (three-letter code: 57J) (formula: C₂₄H₂₅N₃O₃).



Mol	Chain	Residues	Atoms					ZeroOcc	AltConf
2	A	1	Total	C	H	N	O	0	0
			55	24	25	3	3		
2	B	1	Total	C	H	N	O	0	0
			55	24	25	3	3		
2	C	1	Total	C	H	N	O	0	0
			55	24	25	3	3		

- Molecule 3 is SULFATE ION (three-letter code: SO4) (formula: O₄S).



Mol	Chain	Residues	Atoms			ZeroOcc	AltConf
3	A	1	Total	O	S	0	0
			5	4	1		

Continued on next page...

Continued from previous page...

Mol	Chain	Residues	Atoms			ZeroOcc	AltConf
3	A	1	Total	O	S	0	0
			5	4	1		
3	C	1	Total	O	S	0	0
			5	4	1		
3	C	1	Total	O	S	0	0
			5	4	1		
3	C	1	Total	O	S	0	0
			5	4	1		

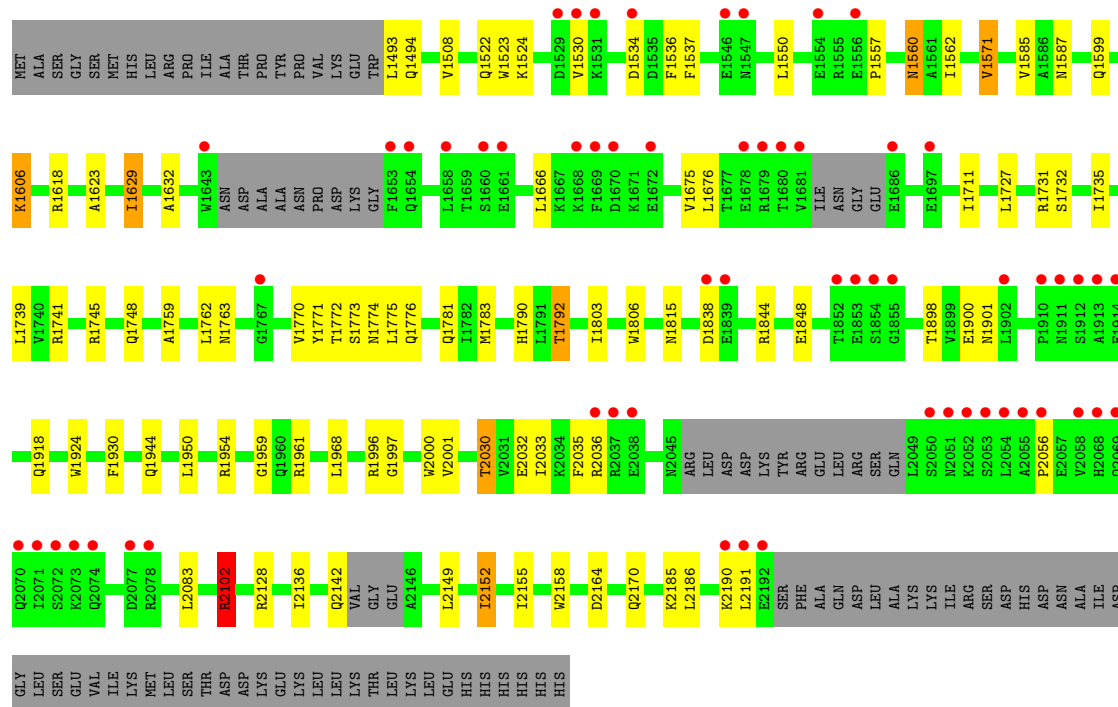
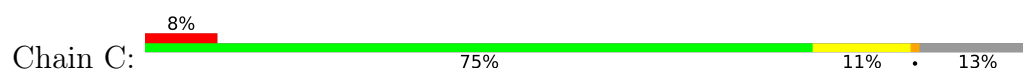
- Molecule 4 is water.

Mol	Chain	Residues	Atoms		ZeroOcc	AltConf
4	A	488	Total	O	0	0
			488	488		
4	B	449	Total	O	0	0
			449	449		
4	C	434	Total	O	0	0
			434	434		

- Molecule 1: Acetyl-CoA carboxylase



- Molecule 1: Acetyl-CoA carboxylase



4 Data and refinement statistics

Property	Value	Source
Space group	C 1 2 1	Depositor
Cell constants a, b, c, α , β , γ	245.85Å 124.38Å 145.67Å 90.00° 94.39° 90.00°	Depositor
Resolution (Å)	19.66 – 2.40 19.64 – 2.40	Depositor EDS
% Data completeness (in resolution range)	98.5 (19.66-2.40) 98.5 (19.64-2.40)	Depositor EDS
R_{merge}	0.09	Depositor
R_{sym}	0.09	Depositor
$\langle I/\sigma(I) \rangle$ ¹	1.83 (at 2.41Å)	Xtriage
Refinement program	BUSTER-TNT BUSTER 2.11.6	Depositor
R, R_{free}	0.172 , 0.199 0.178 , 0.206	Depositor DCC
R_{free} test set	16730 reflections (9.98%)	wwPDB-VP
Wilson B-factor (Å ²)	43.8	Xtriage
Anisotropy	0.404	Xtriage
Bulk solvent k_{sol} (e/Å ³), B_{sol} (Å ²)	0.35 , 64.5	EDS
L-test for twinning ²	$\langle L \rangle = 0.49$, $\langle L^2 \rangle = 0.32$	Xtriage
Estimated twinning fraction	No twinning to report.	Xtriage
F_o, F_c correlation	0.96	EDS
Total number of atoms	17717	wwPDB-VP
Average B, all atoms (Å ²)	57.0	wwPDB-VP

Xtriage's analysis on translational NCS is as follows: *The largest off-origin peak in the Patterson function is 3.14% of the height of the origin peak. No significant pseudotranslation is detected.*

¹Intensities estimated from amplitudes.

²Theoretical values of $\langle |L| \rangle$, $\langle L^2 \rangle$ for acentric reflections are 0.5, 0.333 respectively for untwinned datasets, and 0.375, 0.2 for perfectly twinned datasets.

5 Model quality [i](#)

5.1 Standard geometry [i](#)

Bond lengths and bond angles in the following residue types are not validated in this section: 57J, SO4

The Z score for a bond length (or angle) is the number of standard deviations the observed value is removed from the expected value. A bond length (or angle) with $|Z| > 5$ is considered an outlier worth inspection. RMSZ is the root-mean-square of all Z scores of the bond lengths (or angles).

Mol	Chain	Bond lengths		Bond angles	
		RMSZ	$\# Z > 5$	RMSZ	$\# Z > 5$
1	A	0.51	0/5621	0.70	0/7618
1	B	0.51	0/5476	0.70	0/7421
1	C	0.51	0/5404	0.71	2/7317 (0.0%)
All	All	0.51	0/16501	0.70	2/22356 (0.0%)

There are no bond length outliers.

All (2) bond angle outliers are listed below:

Mol	Chain	Res	Type	Atoms	Z	Observed(°)	Ideal(°)
1	C	2056	PRO	N-CA-CB	6.05	110.56	103.30
1	C	2102	ARG	CB-CG-CD	5.15	124.99	111.60

There are no chirality outliers.

There are no planarity outliers.

5.2 Too-close contacts [i](#)

In the following table, the Non-H and H(model) columns list the number of non-hydrogen atoms and hydrogen atoms in the chain respectively. The H(added) column lists the number of hydrogen atoms added and optimized by MolProbity. The Clashes column lists the number of clashes within the asymmetric unit, whereas Symm-Clashes lists symmetry-related clashes.

Mol	Chain	Non-H	H(model)	H(added)	Clashes	Symm-Clashes
1	A	5502	0	5403	44	0
1	B	5358	0	5291	46	0
1	C	5296	0	5179	43	0
2	A	30	25	25	0	0
2	B	30	25	25	0	0
2	C	30	25	25	0	0

Continued on next page...

Continued from previous page...

Mol	Chain	Non-H	H(model)	H(added)	Clashes	Symm-Clashes
3	A	10	0	0	0	0
3	C	15	0	0	0	0
4	A	488	0	0	12	0
4	B	449	0	0	11	0
4	C	434	0	0	11	0
All	All	17642	75	15948	124	0

The all-atom clashscore is defined as the number of clashes found per 1000 atoms (including hydrogen atoms). The all-atom clashscore for this structure is 4.

The worst 5 of 124 close contacts within the same asymmetric unit are listed below, sorted by their clash magnitude.

Atom-1	Atom-2	Interatomic distance (Å)	Clash overlap (Å)
1:A:1742:LEU:HD22	4:A:2412:HOH:O	1.57	1.03
1:B:1588:ASP:HB2	4:B:2736:HOH:O	1.63	0.98
1:A:1603:PHE:HB3	4:A:2446:HOH:O	1.65	0.95
1:A:1716:SER:HB2	4:A:2412:HOH:O	1.67	0.95
1:C:1599:GLN:HB2	4:C:2428:HOH:O	1.68	0.94

There are no symmetry-related clashes.

5.3 Torsion angles [i](#)

5.3.1 Protein backbone [i](#)

In the following table, the Percentiles column shows the percent Ramachandran outliers of the chain as a percentile score with respect to all X-ray entries followed by that with respect to entries of similar resolution.

The Analysed column shows the number of residues for which the backbone conformation was analysed, and the total number of residues.

Mol	Chain	Analysed	Favoured	Allowed	Outliers	Percentiles	
1	A	689/769 (90%)	665 (96%)	23 (3%)	1 (0%)	51	68
1	B	667/769 (87%)	643 (96%)	24 (4%)	0	100	100
1	C	660/769 (86%)	637 (96%)	22 (3%)	1 (0%)	47	62
All	All	2016/2307 (87%)	1945 (96%)	69 (3%)	2 (0%)	51	68

All (2) Ramachandran outliers are listed below:

Mol	Chain	Res	Type
1	C	1997	GLY
1	A	1997	GLY

5.3.2 Protein sidechains [i](#)

In the following table, the Percentiles column shows the percent sidechain outliers of the chain as a percentile score with respect to all X-ray entries followed by that with respect to entries of similar resolution.

The Analysed column shows the number of residues for which the sidechain conformation was analysed, and the total number of residues.

Mol	Chain	Analysed	Rotameric	Outliers	Percentiles	
1	A	578/658 (88%)	535 (93%)	43 (7%)	13	22
1	B	569/658 (86%)	521 (92%)	48 (8%)	11	16
1	C	552/658 (84%)	509 (92%)	43 (8%)	12	19
All	All	1699/1974 (86%)	1565 (92%)	134 (8%)	12	19

5 of 134 residues with a non-rotameric sidechain are listed below:

Mol	Chain	Res	Type
1	C	1838	ASP
1	C	1950	LEU
1	C	2149	LEU
1	B	1524	LYS
1	B	1508	VAL

Sometimes sidechains can be flipped to improve hydrogen bonding and reduce clashes. 5 of 47 such sidechains are listed below:

Mol	Chain	Res	Type
1	B	1944	GLN
1	C	1605	ASN
1	B	2097	HIS
1	C	1522	GLN
1	C	1763	ASN

5.3.3 RNA [i](#)

There are no RNA molecules in this entry.

5.4 Non-standard residues in protein, DNA, RNA chains [i](#)

There are no non-standard protein/DNA/RNA residues in this entry.

5.5 Carbohydrates [i](#)

There are no monosaccharides in this entry.

5.6 Ligand geometry [i](#)

8 ligands are modelled in this entry.

In the following table, the Counts columns list the number of bonds (or angles) for which Mogul statistics could be retrieved, the number of bonds (or angles) that are observed in the model and the number of bonds (or angles) that are defined in the Chemical Component Dictionary. The Link column lists molecule types, if any, to which the group is linked. The Z score for a bond length (or angle) is the number of standard deviations the observed value is removed from the expected value. A bond length (or angle) with $|Z| > 2$ is considered an outlier worth inspection. RMSZ is the root-mean-square of all Z scores of the bond lengths (or angles).

Mol	Type	Chain	Res	Link	Bond lengths			Bond angles		
					Counts	RMSZ	# Z > 2	Counts	RMSZ	# Z > 2
3	SO4	C	2303	-	4,4,4	0.16	0	6,6,6	0.11	0
2	57J	B	2301	-	34,34,34	0.89	1 (2%)	36,52,52	0.91	2 (5%)
2	57J	A	2301	-	34,34,34	0.88	1 (2%)	36,52,52	0.96	2 (5%)
3	SO4	C	2304	-	4,4,4	0.16	0	6,6,6	0.15	0
3	SO4	C	2302	-	4,4,4	0.23	0	6,6,6	0.13	0
2	57J	C	2301	-	34,34,34	0.90	1 (2%)	36,52,52	0.96	2 (5%)
3	SO4	A	2303	-	4,4,4	0.21	0	6,6,6	0.18	0
3	SO4	A	2302	-	4,4,4	0.10	0	6,6,6	0.12	0

In the following table, the Chirals column lists the number of chiral outliers, the number of chiral centers analysed, the number of these observed in the model and the number defined in the Chemical Component Dictionary. Similar counts are reported in the Torsion and Rings columns. '-' means no outliers of that kind were identified.

Mol	Type	Chain	Res	Link	Chirals	Torsions	Rings
2	57J	C	2301	-	-	0/8/34/34	0/5/5/5
2	57J	A	2301	-	-	0/8/34/34	0/5/5/5
2	57J	B	2301	-	-	0/8/34/34	0/5/5/5

All (3) bond length outliers are listed below:

Mol	Chain	Res	Type	Atoms	Z	Observed(Å)	Ideal(Å)
2	C	2301	57J	C9-N3	2.53	1.40	1.34
2	B	2301	57J	C9-N3	2.32	1.39	1.34
2	A	2301	57J	C9-N3	2.23	1.39	1.34

The worst 5 of 6 bond angle outliers are listed below:

Mol	Chain	Res	Type	Atoms	Z	Observed(°)	Ideal(°)
2	B	2301	57J	C4-C5-C6	-2.54	117.32	121.24
2	C	2301	57J	C4-C5-C6	-2.52	117.35	121.24
2	A	2301	57J	C4-C5-C6	-2.49	117.40	121.24
2	A	2301	57J	C5-C4-C3	2.17	122.51	119.83
2	C	2301	57J	C5-C4-C3	2.16	122.49	119.83

There are no chirality outliers.

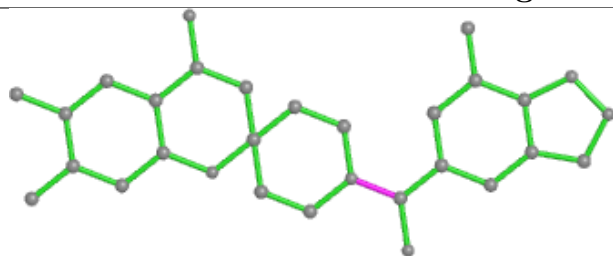
There are no torsion outliers.

There are no ring outliers.

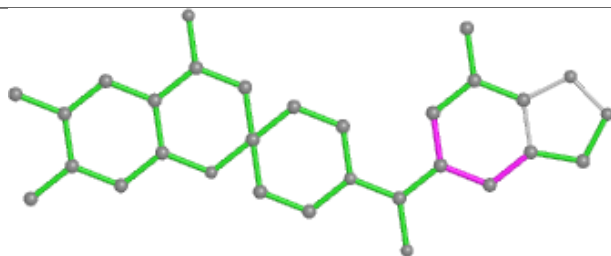
No monomer is involved in short contacts.

The following is a two-dimensional graphical depiction of Mogul quality analysis of bond lengths, bond angles, torsion angles, and ring geometry for all instances of the Ligand of Interest. In addition, ligands with molecular weight > 250 and outliers as shown on the validation Tables will also be included. For torsion angles, if less than 5% of the Mogul distribution of torsion angles is within 10 degrees of the torsion angle in question, then that torsion angle is considered an outlier. Any bond that is central to one or more torsion angles identified as an outlier by Mogul will be highlighted in the graph. For rings, the root-mean-square deviation (RMSD) between the ring in question and similar rings identified by Mogul is calculated over all ring torsion angles. If the average RMSD is greater than 60 degrees and the minimal RMSD between the ring in question and any Mogul-identified rings is also greater than 60 degrees, then that ring is considered an outlier. The outliers are highlighted in purple. The color gray indicates Mogul did not find sufficient equivalents in the CSD to analyse the geometry.

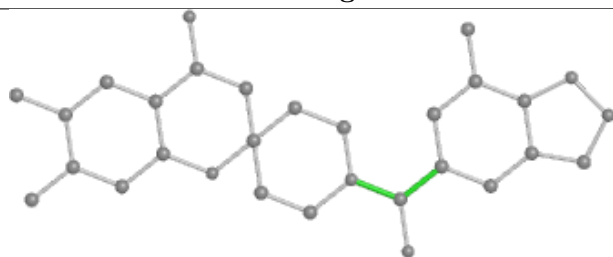
Ligand 57J B 2301



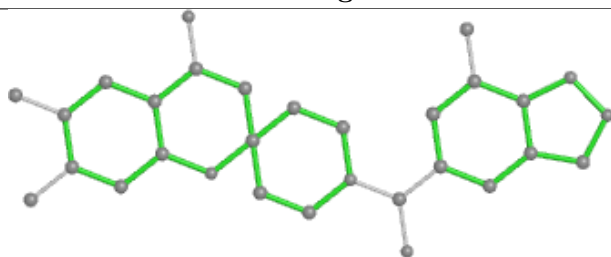
Bond lengths



Bond angles

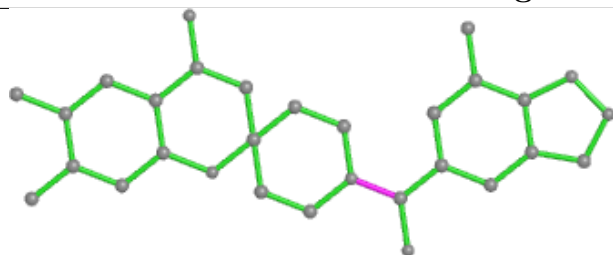


Torsions

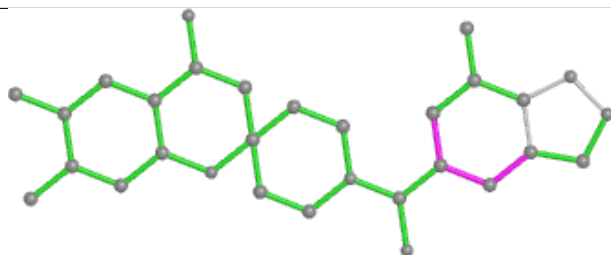


Rings

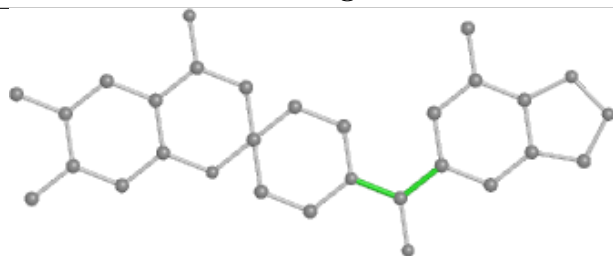
Ligand 57J A 2301



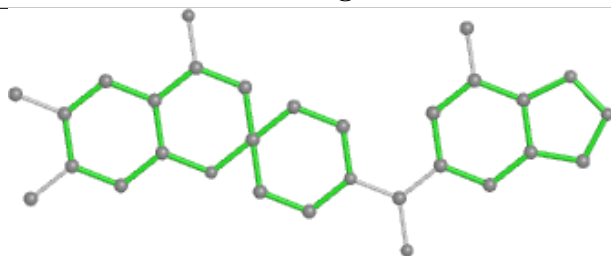
Bond lengths



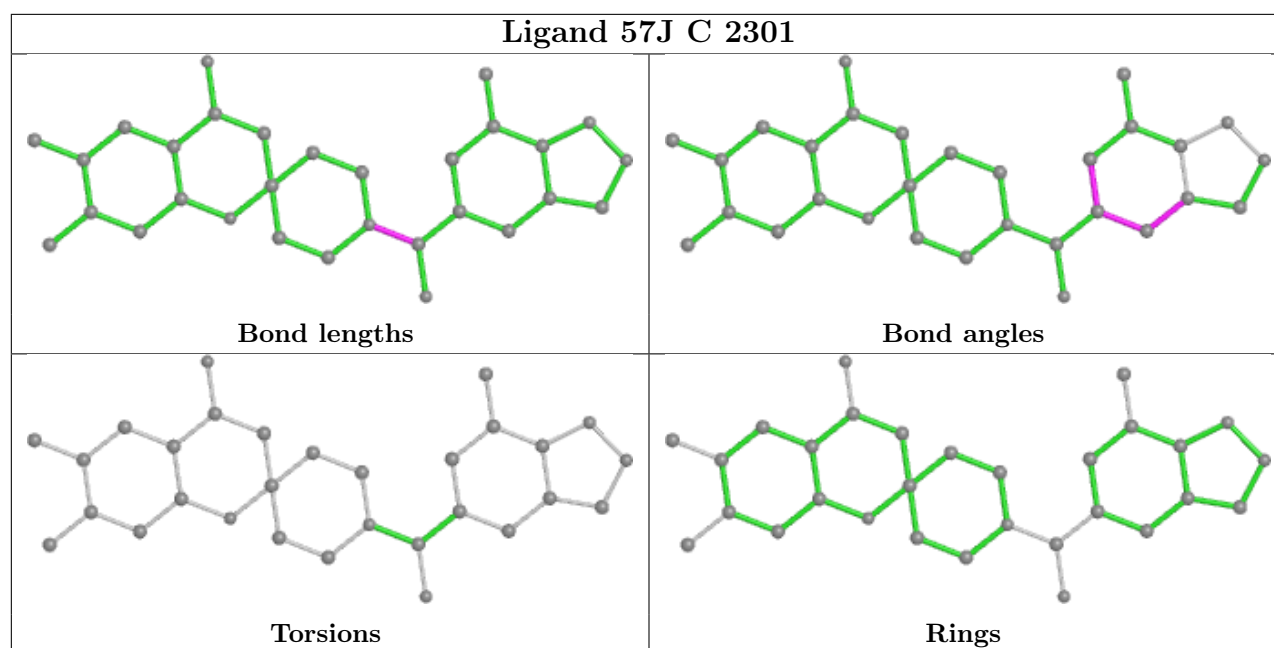
Bond angles



Torsions



Rings



5.7 Other polymers [i](#)

There are no such residues in this entry.

5.8 Polymer linkage issues [i](#)

The following chains have linkage breaks:

Mol	Chain	Number of breaks
1	C	1

All chain breaks are listed below:

Model	Chain	Residue-1	Atom-1	Residue-2	Atom-2	Distance (Å)
1	C	2058:VAL	C	2068:HIS	N	10.40

6 Fit of model and data [i](#)

6.1 Protein, DNA and RNA chains [i](#)

In the following table, the column labelled ‘#RSRZ> 2’ contains the number (and percentage) of RSRZ outliers, followed by percent RSRZ outliers for the chain as percentile scores relative to all X-ray entries and entries of similar resolution. The OWAB column contains the minimum, median, 95th percentile and maximum values of the occupancy-weighted average B-factor per residue. The column labelled ‘Q< 0.9’ lists the number of (and percentage) of residues with an average occupancy less than 0.9.

Mol	Chain	Analysed	<RSRZ>	#RSRZ>2		OWAB(Å²)	Q<0.9	
1	A	695/769 (90%)	-0.11	59 (8%)	10	10	25, 47, 102, 135	0
1	B	673/769 (87%)	-0.06	55 (8%)	11	10	28, 50, 104, 135	0
1	C	672/769 (87%)	-0.07	60 (8%)	9	9	27, 50, 105, 144	0
All	All	2040/2307 (88%)	-0.08	174 (8%)	10	10	25, 49, 104, 144	0

The worst 5 of 174 RSRZ outliers are listed below:

Mol	Chain	Res	Type	RSRZ
1	A	2194	PHE	7.5
1	A	2068	HIS	6.5
1	A	2071	ILE	5.8
1	B	2082	LEU	5.8
1	C	2069	GLN	5.7

6.2 Non-standard residues in protein, DNA, RNA chains [i](#)

There are no non-standard protein/DNA/RNA residues in this entry.

6.3 Carbohydrates [i](#)

There are no monosaccharides in this entry.

6.4 Ligands [i](#)

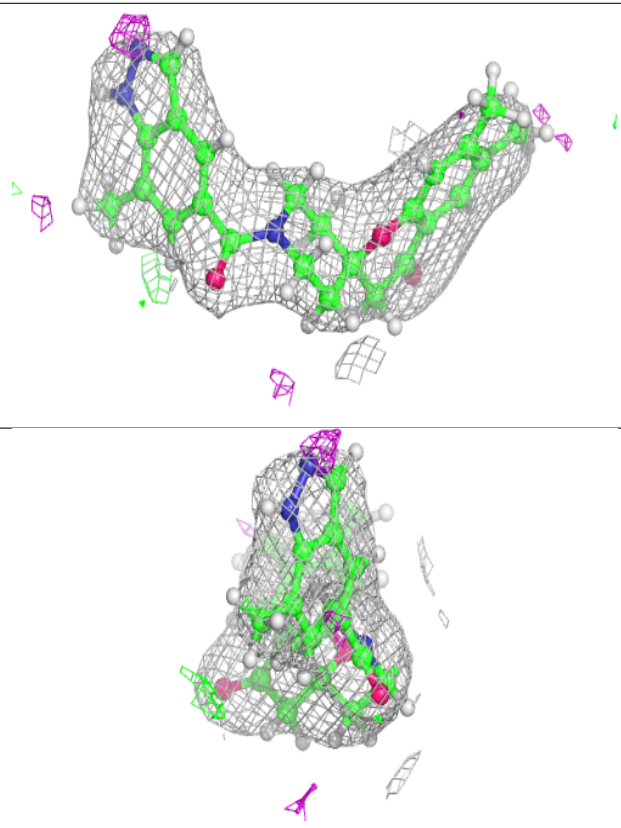
In the following table, the Atoms column lists the number of modelled atoms in the group and the number defined in the chemical component dictionary. The B-factors column lists the minimum, median, 95th percentile and maximum values of B factors of atoms in the group. The column labelled ‘Q< 0.9’ lists the number of atoms with occupancy less than 0.9.

Mol	Type	Chain	Res	Atoms	RSCC	RSR	B-factors(\AA^2)	Q<0.9
3	SO4	C	2304	5/5	0.83	0.46	143,144,144,145	0
3	SO4	C	2302	5/5	0.87	0.26	121,122,123,123	0
3	SO4	A	2303	5/5	0.94	0.34	121,121,122,122	0
2	57J	C	2301	30/30	0.95	0.11	48,56,65,68	0
2	57J	B	2301	30/30	0.95	0.15	53,61,74,75	0
2	57J	A	2301	30/30	0.96	0.14	46,51,61,63	0
3	SO4	A	2302	5/5	0.97	0.26	107,107,108,109	0
3	SO4	C	2303	5/5	0.98	0.24	101,101,101,101	0

The following is a graphical depiction of the model fit to experimental electron density of all instances of the Ligand of Interest. In addition, ligands with molecular weight > 250 and outliers as shown on the geometry validation Tables will also be included. Each fit is shown from different orientation to approximate a three-dimensional view.

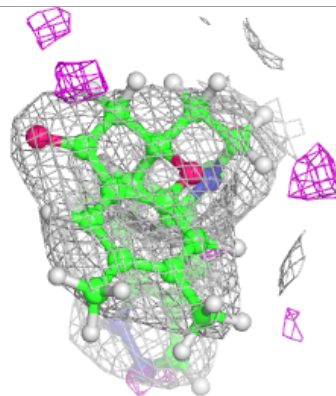
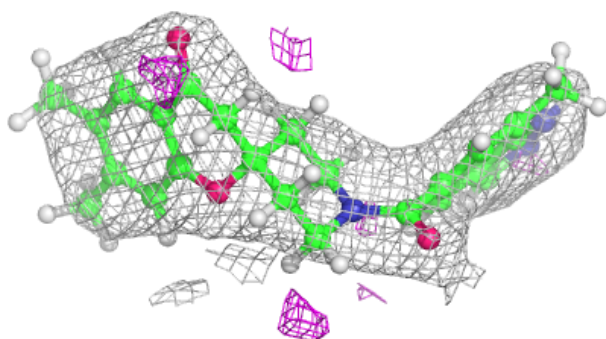
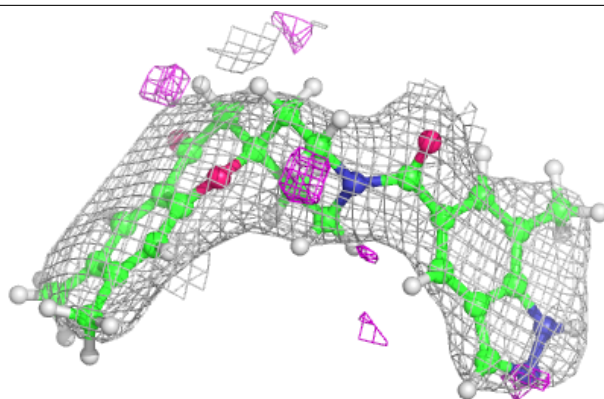
Electron density around 57J C 2301:

2mF_o-DF_c (at 0.7 rmsd) in gray
mF_o-DF_c (at 3 rmsd) in purple (negative)
and green (positive)

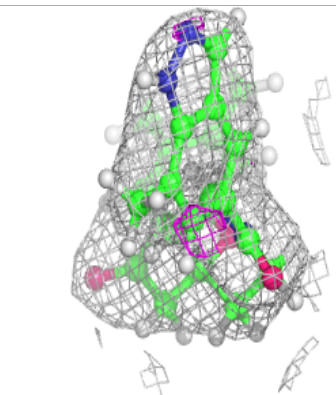
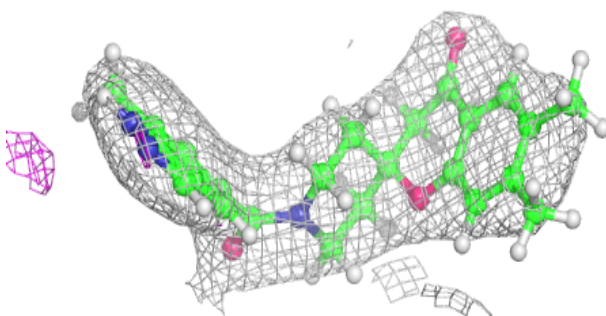
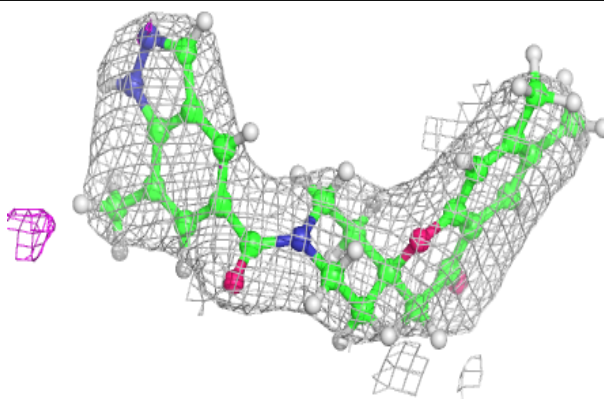


Electron density around 57J B 2301:

$2mF_o-DF_c$ (at 0.7 rmsd) in gray
 mF_o-DF_c (at 3 rmsd) in purple (negative)
and green (positive)

**Electron density around 57J A 2301:**

$2mF_o-DF_c$ (at 0.7 rmsd) in gray
 mF_o-DF_c (at 3 rmsd) in purple (negative)
and green (positive)



6.5 Other polymers [i](#)

There are no such residues in this entry.