



# wwPDB X-ray Structure Validation Summary Report ⓘ

Nov 2, 2024 – 01:17 PM EDT

PDB ID : 2CGR  
Title : LOCAL AND TRANSMITTED CONFORMATIONAL CHANGES ON  
COMPLEXATION OF AN ANTI-SWEETENER FAB  
Authors : Guddat, L.W.; Shan, L.; Edmundson, A.B.  
Deposited on : 1993-11-23  
Resolution : 2.20 Å(reported)

This is a wwPDB X-ray Structure Validation Summary Report for a publicly released PDB entry.

We welcome your comments at [validation@mail.wwpdb.org](mailto:validation@mail.wwpdb.org)

A user guide is available at

<https://www.wwpdb.org/validation/2017/XrayValidationReportHelp>

with specific help available everywhere you see the ⓘ symbol.

The types of validation reports are described at

<http://www.wwpdb.org/validation/2017/FAQs#types>.

---

The following versions of software and data (see [references ⓘ](#)) were used in the production of this report:

MolProbity	:	4.02b-467
Mogul	:	2022.3.0, CSD as543be (2022)
Xtriage (Phenix)	:	NOT EXECUTED
EDS	:	NOT EXECUTED
buster-report	:	1.1.7 (2018)
Percentile statistics	:	20231227.v01 (using entries in the PDB archive December 27th 2023)
Ideal geometry (proteins)	:	Engh & Huber (2001)
Ideal geometry (DNA, RNA)	:	Parkinson et al. (1996)
Validation Pipeline (wwPDB-VP)	:	2.39

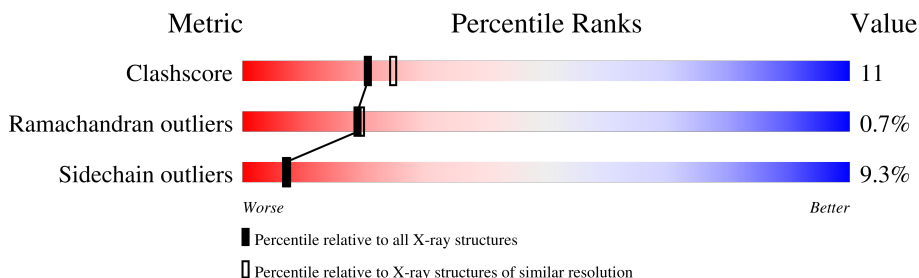
# 1 Overall quality at a glance

The following experimental techniques were used to determine the structure:

*X-RAY DIFFRACTION*

The reported resolution of this entry is 2.20 Å.

Percentile scores (ranging between 0-100) for global validation metrics of the entry are shown in the following graphic. The table shows the number of entries on which the scores are based.



Metric	Whole archive (#Entries)	Similar resolution (#Entries, resolution range(Å))
Clashscore	180529	6634 (2.20-2.20)
Ramachandran outliers	177936	6560 (2.20-2.20)
Sidechain outliers	177891	6561 (2.20-2.20)

The table below summarises the geometric issues observed across the polymeric chains and their fit to the electron density. The red, orange, yellow and green segments of the lower bar indicate the fraction of residues that contain outliers for  $\geq 3$ , 2, 1 and 0 types of geometric quality criteria respectively. A grey segment represents the fraction of residues that are not modelled. The numeric value for each fraction is indicated below the corresponding segment, with a dot representing fractions  $\leq 5\%$ .

Note EDS was not executed.

Mol	Chain	Length	Quality of chain
1	L	219	 72% 25% .
2	H	214	 74% 22% . .

## 2 Entry composition

There are 4 unique types of molecules in this entry. The entry contains 3508 atoms, of which 0 are hydrogens and 0 are deuteriums.

In the tables below, the ZeroOcc column contains the number of atoms modelled with zero occupancy, the AltConf column contains the number of residues with at least one atom in alternate conformation and the Trace column contains the number of residues modelled with at most 2 atoms.

- Molecule 1 is a protein called IGG2B-KAPPA NC6.8 FAB (LIGHT CHAIN).

Mol	Chain	Residues	Atoms					ZeroOcc	AltConf	Trace
1	L	219	Total	C	N	O	S	0	0	0
			1696	1059	291	339	7			

There are 8 discrepancies between the modelled and reference sequences:

Chain	Residue	Modelled	Actual	Comment	Reference
L	7	SER	THR	conflict	PIR S16112
L	25	PRO	SER	conflict	PIR S16112
L	39	HIS	TYR	conflict	PIR S16112
L	51	LEU	PRO	conflict	PIR S16112
L	75	ALA	ASP	conflict	PIR S16112
L	94	SER	PHE	conflict	PIR S16112
L	108	LYS	ARG	conflict	PIR S16112
L	111	LEU	ILE	conflict	PIR S16112

- Molecule 2 is a protein called IGG2B-KAPPA NC6.8 FAB (HEAVY CHAIN).

Mol	Chain	Residues	Atoms					ZeroOcc	AltConf	Trace
2	H	214	Total	C	N	O	S	0	0	0
			1608	1012	260	327	9			

There are 17 discrepancies between the modelled and reference sequences:

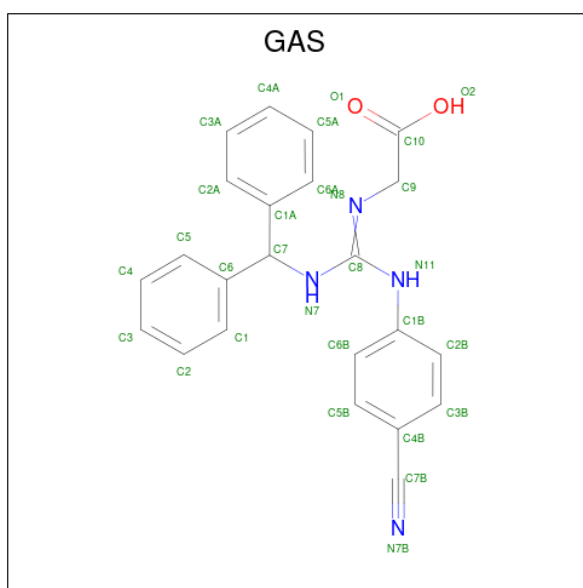
Chain	Residue	Modelled	Actual	Comment	Reference
H	5	LEU	VAL	conflict	GB 1613777
H	19	GLN	LYS	conflict	GB 1613777
H	31	GLU	SER	conflict	GB 1613777
H	37	VAL	ILE	conflict	GB 1613777
H	39	GLU	GLN	conflict	GB 1613777
H	48	ILE	THR	conflict	GB 1613777
H	57	ARG	THR	conflict	GB 1613777
H	59	ASN	LYS	conflict	GB 1613777

*Continued on next page...*

Continued from previous page...

Chain	Residue	Modelled	Actual	Comment	Reference
H	61	ARG	ASN	conflict	GB 1613777
H	66	GLY	ASP	conflict	GB 1613777
H	97	THR	ALA	conflict	GB 1613777
H	?	-	SER	deletion	GB 1613777
H	?	-	TYR	deletion	GB 1613777
H	99	GLY	ARG	conflict	GB 1613777
H	101	SER	ALA	conflict	GB 1613777
H	102	SER	PRO	conflict	GB 1613777
H	116	ALA	SER	conflict	GB 1613777

- Molecule 3 is N-(P-CYANOPHENYL)-N'-DIPHENYLMETHYL-GUANIDINE-ACETIC ACID (three-letter code: GAS) (formula:  $C_{23}H_{20}N_4O_2$ ).



Mol	Chain	Residues	Atoms				ZeroOcc	AltConf
3	H	1	Total	C	N	O	0	0
			29	23	4	2		

- Molecule 4 is water.

Mol	Chain	Residues	Atoms		ZeroOcc	AltConf
4	L	89	Total	O	0	0
			89	89		
4	H	86	Total	O	0	0
			86	86		

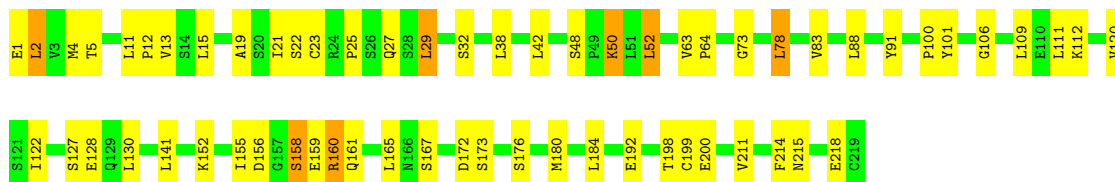
### 3 Residue-property plots

These plots are drawn for all protein, RNA, DNA and oligosaccharide chains in the entry. The first graphic for a chain summarises the proportions of the various outlier classes displayed in the second graphic. The second graphic shows the sequence view annotated by issues in geometry. Residues are color-coded according to the number of geometric quality criteria for which they contain at least one outlier: green = 0, yellow = 1, orange = 2 and red = 3 or more. Stretches of 2 or more consecutive residues without any outlier are shown as a green connector. Residues present in the sample, but not in the model, are shown in grey.

Note EDS was not executed.

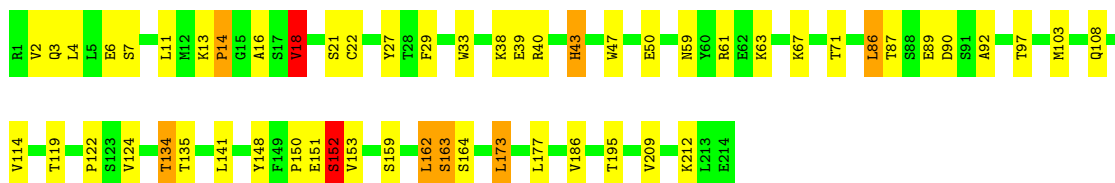
- Molecule 1: IGG2B-KAPPA NC6.8 FAB (LIGHT CHAIN)

Chain L: 



- Molecule 2: IGG2B-KAPPA NC6.8 FAB (HEAVY CHAIN)

Chain H: 



## 4 Data and refinement statistics

Xtriage (Phenix) and EDS were not executed - this section is therefore incomplete.

Property	Value	Source
Space group	P 21 21 2	Depositor
Cell constants a, b, c, $\alpha$ , $\beta$ , $\gamma$	131.00Å 114.10Å 37.30Å 90.00° 90.00° 90.00°	Depositor
Resolution (Å)	10.00 – 2.20	Depositor
% Data completeness (in resolution range)	(Not available) (10.00-2.20)	Depositor
$R_{merge}$	(Not available)	Depositor
$R_{sym}$	(Not available)	Depositor
Refinement program	X-PLOR	Depositor
R, $R_{free}$	0.214 , (Not available)	Depositor
Estimated twinning fraction	No twinning to report.	Xtriage
Total number of atoms	3508	wwPDB-VP
Average B, all atoms (Å <sup>2</sup> )	27.0	wwPDB-VP

## 5 Model quality

### 5.1 Standard geometry

Bond lengths and bond angles in the following residue types are not validated in this section: GAS

The Z score for a bond length (or angle) is the number of standard deviations the observed value is removed from the expected value. A bond length (or angle) with  $|Z| > 5$  is considered an outlier worth inspection. RMSZ is the root-mean-square of all Z scores of the bond lengths (or angles).

Mol	Chain	Bond lengths		Bond angles	
		RMSZ	$\# Z  > 5$	RMSZ	$\# Z  > 5$
1	L	0.68	0/1736	0.91	5/2355 (0.2%)
2	H	0.68	0/1650	0.91	2/2251 (0.1%)
All	All	0.68	0/3386	0.91	7/4606 (0.2%)

Chiral center outliers are detected by calculating the chiral volume of a chiral center and verifying if the center is modelled as a planar moiety or with the opposite hand. A planarity outlier is detected by checking planarity of atoms in a peptide group, atoms in a mainchain group or atoms of a sidechain that are expected to be planar.

Mol	Chain	#Chirality outliers	#Planarity outliers
1	L	0	1

There are no bond length outliers.

The worst 5 of 7 bond angle outliers are listed below:

Mol	Chain	Res	Type	Atoms	Z	Observed( $^{\circ}$ )	Ideal( $^{\circ}$ )
1	L	161	GLN	N-CA-C	7.03	129.98	111.00
1	L	160	ARG	N-CA-C	-6.31	93.95	111.00
1	L	78	LEU	CA-CB-CG	6.27	129.72	115.30
1	L	52	LEU	CA-CB-CG	5.61	128.20	115.30
2	H	18	VAL	CB-CA-C	-5.60	100.77	111.40

There are no chirality outliers.

All (1) planarity outliers are listed below:

Mol	Chain	Res	Type	Group
1	L	101	TYR	Sidechain

## 5.2 Too-close contacts [i](#)

In the following table, the Non-H and H(model) columns list the number of non-hydrogen atoms and hydrogen atoms in the chain respectively. The H(added) column lists the number of hydrogen atoms added and optimized by MolProbity. The Clashes column lists the number of clashes within the asymmetric unit, whereas Symm-Clashes lists symmetry-related clashes.

Mol	Chain	Non-H	H(model)	H(added)	Clashes	Symm-Clashes
1	L	1696	0	1637	34	0
2	H	1608	0	1550	39	0
3	H	29	0	18	0	0
4	H	86	0	0	2	0
4	L	89	0	0	5	0
All	All	3508	0	3205	72	0

The all-atom clashscore is defined as the number of clashes found per 1000 atoms (including hydrogen atoms). The all-atom clashscore for this structure is 11.

The worst 5 of 72 close contacts within the same asymmetric unit are listed below, sorted by their clash magnitude.

Atom-1	Atom-2	Interatomic distance (Å)	Clash overlap (Å)
2:H:18:VAL:HG22	2:H:86:LEU:HD21	1.60	0.83
1:L:215:ASN:HB2	1:L:218:GLU:HG2	1.60	0.81
2:H:87:THR:HG22	2:H:89:GLU:H	1.46	0.79
1:L:200:GLU:HG3	1:L:211:VAL:HG22	1.66	0.77
1:L:11:LEU:HD21	1:L:19:ALA:HB1	1.65	0.76

There are no symmetry-related clashes.

## 5.3 Torsion angles [i](#)

### 5.3.1 Protein backbone [i](#)

In the following table, the Percentiles column shows the percent Ramachandran outliers of the chain as a percentile score with respect to all X-ray entries followed by that with respect to entries of similar resolution.

The Analysed column shows the number of residues for which the backbone conformation was analysed, and the total number of residues.

Mol	Chain	Analysed	Favoured	Allowed	Outliers	Percentiles
1	L	217/219 (99%)	208 (96%)	8 (4%)	1 (0%)	25 28

*Continued on next page...*



*Continued from previous page...*

Mol	Chain	Analysed	Favoured	Allowed	Outliers	Percentiles	
2	H	212/214 (99%)	199 (94%)	11 (5%)	2 (1%)	14	14
All	All	429/433 (99%)	407 (95%)	19 (4%)	3 (1%)	19	19

All (3) Ramachandran outliers are listed below:

Mol	Chain	Res	Type
2	H	163	SER
1	L	73	GLY
2	H	152	SER

### 5.3.2 Protein sidechains [i](#)

In the following table, the Percentiles column shows the percent sidechain outliers of the chain as a percentile score with respect to all X-ray entries followed by that with respect to entries of similar resolution.

The Analysed column shows the number of residues for which the sidechain conformation was analysed, and the total number of residues.

Mol	Chain	Analysed	Rotameric	Outliers	Percentiles	
1	L	195/195 (100%)	176 (90%)	19 (10%)	6	6
2	H	182/182 (100%)	166 (91%)	16 (9%)	8	8
All	All	377/377 (100%)	342 (91%)	35 (9%)	7	7

5 of 35 residues with a non-rotameric sidechain are listed below:

Mol	Chain	Res	Type
2	H	97	THR
2	H	114	VAL
2	H	159	SER
1	L	127	SER
1	L	88	LEU

Sometimes sidechains can be flipped to improve hydrogen bonding and reduce clashes. All (2) such sidechains are listed below:

Mol	Chain	Res	Type
2	H	3	GLN
2	H	77	ASN

### 5.3.3 RNA [i](#)

There are no RNA molecules in this entry.

## 5.4 Non-standard residues in protein, DNA, RNA chains [i](#)

There are no non-standard protein/DNA/RNA residues in this entry.

## 5.5 Carbohydrates [i](#)

There are no oligosaccharides in this entry.

## 5.6 Ligand geometry [i](#)

1 ligand is modelled in this entry.

In the following table, the Counts columns list the number of bonds (or angles) for which Mogul statistics could be retrieved, the number of bonds (or angles) that are observed in the model and the number of bonds (or angles) that are defined in the Chemical Component Dictionary. The Link column lists molecule types, if any, to which the group is linked. The Z score for a bond length (or angle) is the number of standard deviations the observed value is removed from the expected value. A bond length (or angle) with  $|Z| > 2$  is considered an outlier worth inspection. RMSZ is the root-mean-square of all Z scores of the bond lengths (or angles).

Mol	Type	Chain	Res	Link	Bond lengths			Bond angles		
					Counts	RMSZ	# Z  > 2	Counts	RMSZ	# Z  > 2
3	GAS	H	215	-	30,31,31	2.82	5 (16%)	35,40,40	0.94	2 (5%)

In the following table, the Chirals column lists the number of chiral outliers, the number of chiral centers analysed, the number of these observed in the model and the number defined in the Chemical Component Dictionary. Similar counts are reported in the Torsion and Rings columns. '-' means no outliers of that kind were identified.

Mol	Type	Chain	Res	Link	Chirals	Torsions	Rings
3	GAS	H	215	-	-	2/21/23/23	0/3/3/3

All (5) bond length outliers are listed below:

Mol	Chain	Res	Type	Atoms	Z	Observed(Å)	Ideal(Å)
3	H	215	GAS	C1A-C7	-9.75	1.40	1.52
3	H	215	GAS	C6-C7	-9.75	1.40	1.52
3	H	215	GAS	C1B-N11	3.63	1.49	1.41

*Continued on next page...*

*Continued from previous page...*

Mol	Chain	Res	Type	Atoms	Z	Observed(Å)	Ideal(Å)
3	H	215	GAS	C8-N11	-3.39	1.29	1.36
3	H	215	GAS	C4B-C7B	3.26	1.51	1.44

All (2) bond angle outliers are listed below:

Mol	Chain	Res	Type	Atoms	Z	Observed(°)	Ideal(°)
3	H	215	GAS	C1B-N11-C8	2.75	134.25	126.70
3	H	215	GAS	N11-C8-N8	-2.45	119.66	122.69

There are no chirality outliers.

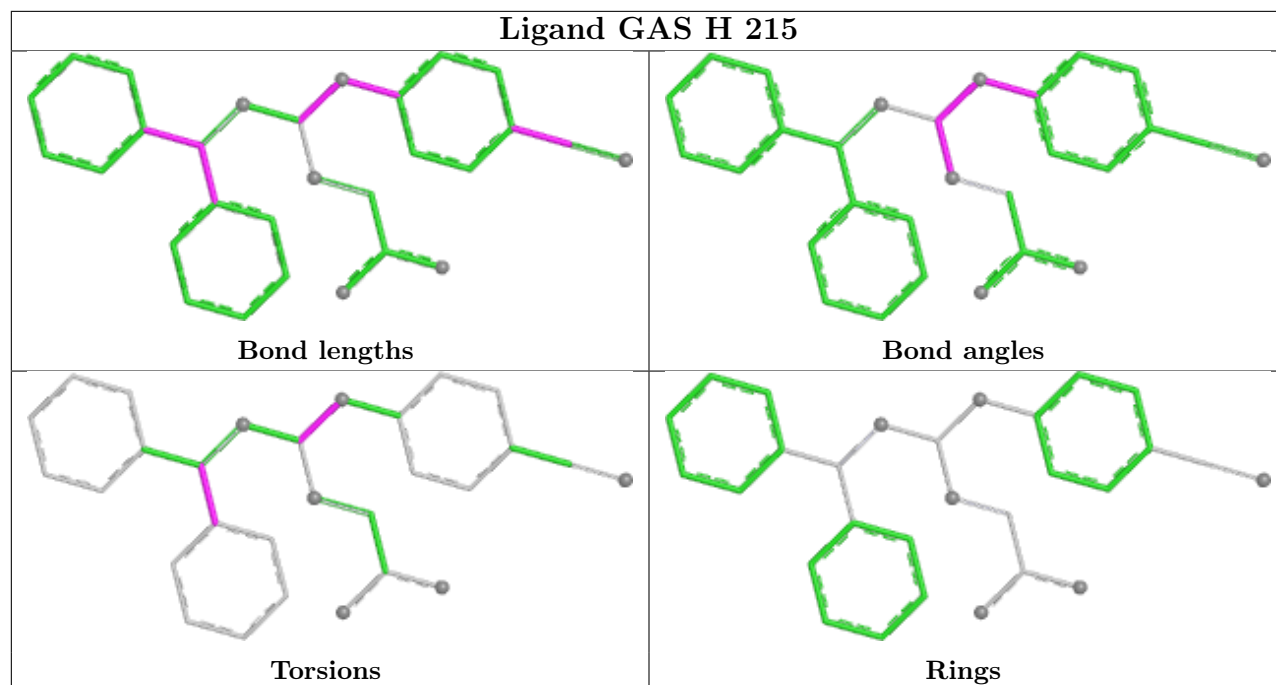
All (2) torsion outliers are listed below:

Mol	Chain	Res	Type	Atoms
3	H	215	GAS	C5-C6-C7-C1A
3	H	215	GAS	N7-C8-N11-C1B

There are no ring outliers.

No monomer is involved in short contacts.

The following is a two-dimensional graphical depiction of Mogul quality analysis of bond lengths, bond angles, torsion angles, and ring geometry for all instances of the Ligand of Interest. In addition, ligands with molecular weight > 250 and outliers as shown on the validation Tables will also be included. For torsion angles, if less than 5% of the Mogul distribution of torsion angles is within 10 degrees of the torsion angle in question, then that torsion angle is considered an outlier. Any bond that is central to one or more torsion angles identified as an outlier by Mogul will be highlighted in the graph. For rings, the root-mean-square deviation (RMSD) between the ring in question and similar rings identified by Mogul is calculated over all ring torsion angles. If the average RMSD is greater than 60 degrees and the minimal RMSD between the ring in question and any Mogul-identified rings is also greater than 60 degrees, then that ring is considered an outlier. The outliers are highlighted in purple. The color gray indicates Mogul did not find sufficient equivalents in the CSD to analyse the geometry.



## 5.7 Other polymers [i](#)

There are no such residues in this entry.

## 5.8 Polymer linkage issues [i](#)

There are no chain breaks in this entry.

## 6 Fit of model and data

### 6.1 Protein, DNA and RNA chains

EDS was not executed - this section is therefore empty.

### 6.2 Non-standard residues in protein, DNA, RNA chains

EDS was not executed - this section is therefore empty.

### 6.3 Carbohydrates

EDS was not executed - this section is therefore empty.

### 6.4 Ligands

EDS was not executed - this section is therefore empty.

### 6.5 Other polymers

EDS was not executed - this section is therefore empty.