



wwPDB X-ray Structure Validation Summary Report ⓘ

Nov 13, 2024 – 06:24 pm GMT

PDB ID : 2CFK
Title : AGAO in complex with wc5 (Ru-wire inhibitor, 5-carbon linker)
Authors : Langley, D.B.; Duff, A.P.; Freeman, H.C.; Guss, J.M.; Juda, G.A.; Dooley, D.M.; Contakes, S.M.; Halpern-Manners, N.W.; Dunn, A.R.; Gray, H.B.
Deposited on : 2006-02-21
Resolution : 1.80 Å(reported)

This is a wwPDB X-ray Structure Validation Summary Report for a publicly released PDB entry.

We welcome your comments at validation@mail.wwpdb.org

A user guide is available at

<https://www.wwpdb.org/validation/2017/XrayValidationReportHelp>

with specific help available everywhere you see the ⓘ symbol.

The types of validation reports are described at

<http://www.wwpdb.org/validation/2017/FAQs#types>.

The following versions of software and data (see [references ⓘ](#)) were used in the production of this report:

MolProbity : 4.02b-467
Mogul : 1.8.4, CSD as541be (2020)
Xtriage (Phenix) : 1.13
EDS : 3.0
buster-report : 1.1.7 (2018)
Percentile statistics : 20231227.v01 (using entries in the PDB archive December 27th 2023)
CCP4 : 9.0.003 (Gargrove)
Density-Fitness : 1.0.11
Ideal geometry (proteins) : Engh & Huber (2001)
Ideal geometry (DNA, RNA) : Parkinson et al. (1996)
Validation Pipeline (wwPDB-VP) : 2.39

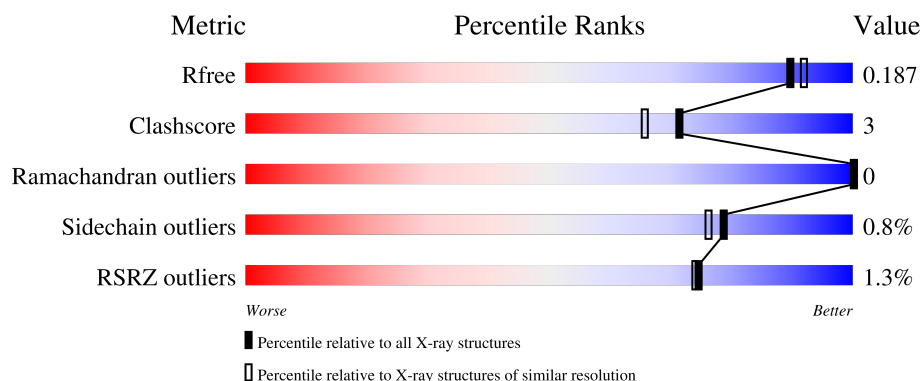
1 Overall quality at a glance

The following experimental techniques were used to determine the structure:

X-RAY DIFFRACTION

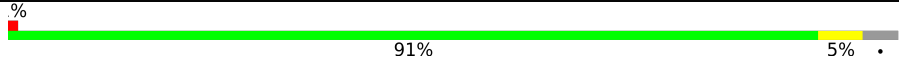
The reported resolution of this entry is 1.80 Å.

Percentile scores (ranging between 0-100) for global validation metrics of the entry are shown in the following graphic. The table shows the number of entries on which the scores are based.



Metric	Whole archive (#Entries)	Similar resolution (#Entries, resolution range(Å))
R_{free}	164625	7108 (1.80-1.80)
Clashscore	180529	8162 (1.80-1.80)
Ramachandran outliers	177936	8077 (1.80-1.80)
Sidechain outliers	177891	8076 (1.80-1.80)
RSRZ outliers	164620	7108 (1.80-1.80)

The table below summarises the geometric issues observed across the polymeric chains and their fit to the electron density. The red, orange, yellow and green segments of the lower bar indicate the fraction of residues that contain outliers for ≥ 3 , 2, 1 and 0 types of geometric quality criteria respectively. A grey segment represents the fraction of residues that are not modelled. The numeric value for each fraction is indicated below the corresponding segment, with a dot representing fractions $\leq 5\%$. The upper red bar (where present) indicates the fraction of residues that have poor fit to the electron density. The numeric value is given above the bar.

Mol	Chain	Length	Quality of chain
1	A	646	

The following table lists non-polymeric compounds, carbohydrate monomers and non-standard residues in protein, DNA, RNA chains that are outliers for geometric or electron-density-fit criteria:

Mol	Type	Chain	Res	Chirality	Geometry	Clashes	Electron density
4	R5A	A	1631[A]	X	-	-	-

Continued on next page...

Continued from previous page...

Mol	Type	Chain	Res	Chirality	Geometry	Clashes	Electron density
4	R5A	A	1632[B]	X	-	-	-

2 Entry composition

There are 7 unique types of molecules in this entry. The entry contains 10117 atoms, of which 4628 are hydrogens and 0 are deuteriums.

In the tables below, the ZeroOcc column contains the number of atoms modelled with zero occupancy, the AltConf column contains the number of residues with at least one atom in alternate conformation and the Trace column contains the number of residues modelled with at most 2 atoms.

- Molecule 1 is a protein called Phenylethylamine oxidase.

Mol	Chain	Residues	Atoms						ZeroOcc	AltConf	Trace
1	A	620	Total	C	H	N	O	S	0	9	0
			9404	3095	4507	856	935	11			

There are 10 discrepancies between the modelled and reference sequences:

Chain	Residue	Modelled	Actual	Comment	Reference
A	639	SER	-	expression tag	UNP P46881
A	640	ASN	-	expression tag	UNP P46881
A	641	TRP	-	expression tag	UNP P46881
A	642	SER	-	expression tag	UNP P46881
A	643	HIS	-	expression tag	UNP P46881
A	644	PRO	-	expression tag	UNP P46881
A	645	GLN	-	expression tag	UNP P46881
A	646	PHE	-	expression tag	UNP P46881
A	647	GLU	-	expression tag	UNP P46881
A	648	LYS	-	expression tag	UNP P46881

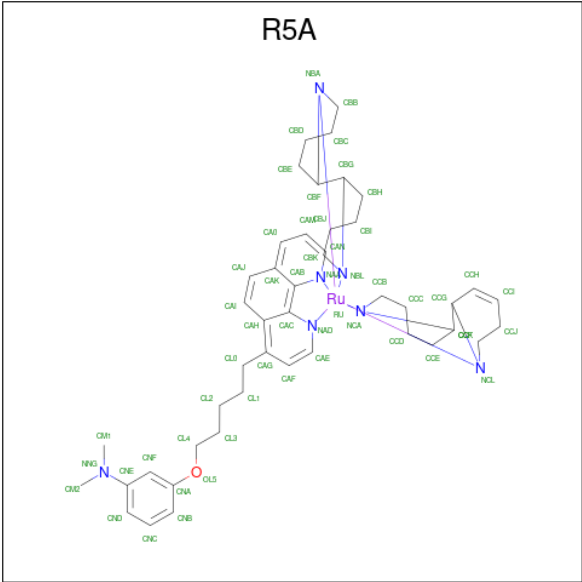
- Molecule 2 is COPPER (II) ION (three-letter code: CU) (formula: Cu).

Mol	Chain	Residues	Atoms		ZeroOcc	AltConf
2	A	1	Total	Cu	0	0
			1	1		

- Molecule 3 is SODIUM ION (three-letter code: NA) (formula: Na).

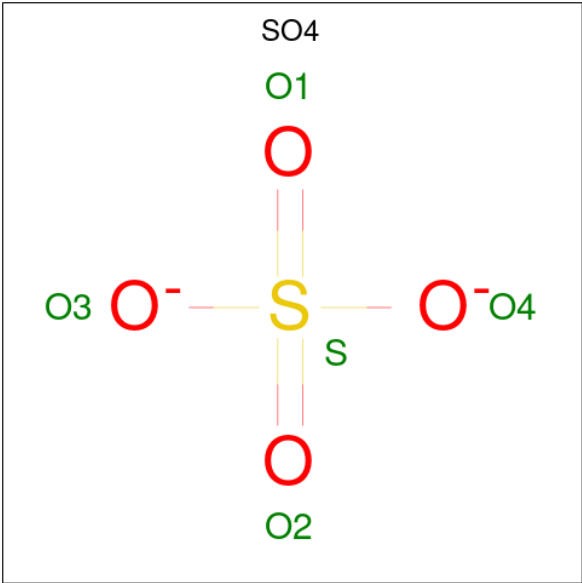
Mol	Chain	Residues	Atoms		ZeroOcc	AltConf
3	A	1	Total	Na	0	0
			1	1		

- Molecule 4 is RUTHENIUM WIRE, 5 CARBON LINKER (three-letter code: R5A) (formula: C₄₅H₆₁N₇ORu).



Mol	Chain	Residues	Atoms						ZeroOcc	AltConf
4	A	1	Total	C	H	N	O	Ru	0	1
			97	45	43	7	1	1		
4	A	1	Total	C	H	N	O	Ru	0	1
			97	45	43	7	1	1		

- Molecule 5 is SULFATE ION (three-letter code: SO4) (formula: O₄S).



Mol	Chain	Residues	Atoms		ZeroOcc	AltConf
5	A	1	Total	O S	0	0
			5	4 1		
5	A	1	Total	O S	0	0
			5	4 1		

Continued on next page...

Continued from previous page...

Mol	Chain	Residues	Atoms			ZeroOcc	AltConf
5	A	1	Total	O	S	0	0
			5	4	1		

- Molecule 6 is GLYCEROL (three-letter code: GOL) (formula: $C_3H_8O_3$).

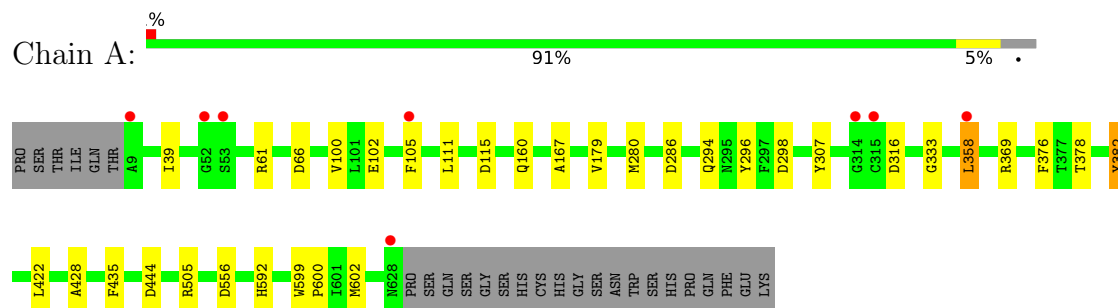


Mol	Chain	Residues	Atoms				ZeroOcc	AltConf
6	A	1	Total	C	H	O	0	0
			11	3	5	3		
6	A	1	Total	C	H	O	0	0
			11	3	5	3		
6	A	1	Total	C	H	O	0	0
			11	3	5	3		
6	A	1	Total	C	H	O	0	0
			11	3	5	3		
6	A	1	Total	C	H	O	0	0
			11	3	5	3		
6	A	1	Total	C	H	O	0	0
			11	3	5	3		

- Molecule 7 is water.

Mol	Chain	Residues	Atoms		ZeroOcc	AltConf
7	A	425	Total	O	0	0
			425	425		

- Molecule 1: Phenylethylamine oxidase



4 Data and refinement statistics

Property	Value	Source
Space group	C 1 2 1	Depositor
Cell constants a, b, c, α , β , γ	157.88Å 62.94Å 92.01Å 90.00° 112.20° 90.00°	Depositor
Resolution (Å)	15.02 – 1.80 15.02 – 1.80	Depositor EDS
% Data completeness (in resolution range)	98.9 (15.02-1.80) 98.8 (15.02-1.80)	Depositor EDS
R_{merge}	0.03	Depositor
R_{sym}	(Not available)	Depositor
$\langle I/\sigma(I) \rangle$ ¹	1.70 (at 1.79Å)	Xtriage
Refinement program	REFMAC 5.1.24	Depositor
R, R_{free}	0.145 , 0.165 0.171 , 0.187	Depositor DCC
R_{free} test set	3847 reflections (5.01%)	wwPDB-VP
Wilson B-factor (Å ²)	21.9	Xtriage
Anisotropy	0.602	Xtriage
Bulk solvent k_{sol} (e/Å ³), B_{sol} (Å ²)	0.45 , 43.7	EDS
L-test for twinning ²	$\langle L \rangle = 0.49$, $\langle L^2 \rangle = 0.32$	Xtriage
Estimated twinning fraction	No twinning to report.	Xtriage
F_o, F_c correlation	0.96	EDS
Total number of atoms	10117	wwPDB-VP
Average B, all atoms (Å ²)	22.0	wwPDB-VP

Xtriage's analysis on translational NCS is as follows: *The largest off-origin peak in the Patterson function is 5.19% of the height of the origin peak. No significant pseudotranslation is detected.*

¹Intensities estimated from amplitudes.

²Theoretical values of $\langle |L| \rangle$, $\langle L^2 \rangle$ for acentric reflections are 0.5, 0.333 respectively for untwinned datasets, and 0.375, 0.2 for perfectly twinned datasets.

5 Model quality [i](#)

5.1 Standard geometry [i](#)

Bond lengths and bond angles in the following residue types are not validated in this section: GOL, SO4, CU, NA, TPQ, R5A

The Z score for a bond length (or angle) is the number of standard deviations the observed value is removed from the expected value. A bond length (or angle) with $|Z| > 5$ is considered an outlier worth inspection. RMSZ is the root-mean-square of all Z scores of the bond lengths (or angles).

Mol	Chain	Bond lengths		Bond angles	
		RMSZ	$\# Z > 5$	RMSZ	$\# Z > 5$
1	A	0.50	0/5045	0.79	7/6869 (0.1%)

There are no bond length outliers.

The worst 5 of 7 bond angle outliers are listed below:

Mol	Chain	Res	Type	Atoms	Z	Observed(°)	Ideal(°)
1	A	505	ARG	NE-CZ-NH2	-6.08	117.26	120.30
1	A	505	ARG	NE-CZ-NH1	5.87	123.23	120.30
1	A	298	ASP	CB-CG-OD2	5.71	123.44	118.30
1	A	286	ASP	CB-CG-OD1	5.45	123.21	118.30
1	A	316	ASP	CB-CG-OD2	5.45	123.20	118.30

There are no chirality outliers.

There are no planarity outliers.

5.2 Too-close contacts [i](#)

In the following table, the Non-H and H(model) columns list the number of non-hydrogen atoms and hydrogen atoms in the chain respectively. The H(added) column lists the number of hydrogen atoms added and optimized by MolProbity. The Clashes column lists the number of clashes within the asymmetric unit, whereas Symm-Clashes lists symmetry-related clashes.

Mol	Chain	Non-H	H(model)	H(added)	Clashes	Symm-Clashes
1	A	4897	4507	4712	26	0
2	A	1	0	0	0	0
3	A	1	0	0	0	0
4	A	108	86	114	15	0
5	A	15	0	0	0	0
6	A	42	35	56	2	0

Continued on next page...

Continued from previous page...

Mol	Chain	Non-H	H(model)	H(added)	Clashes	Symm-Clashes
7	A	425	0	0	3	0
All	All	5489	4628	4882	32	0

The all-atom clashscore is defined as the number of clashes found per 1000 atoms (including hydrogen atoms). The all-atom clashscore for this structure is 3.

The worst 5 of 32 close contacts within the same asymmetric unit are listed below, sorted by their clash magnitude.

Atom-1	Atom-2	Interatomic distance (Å)	Clash overlap (Å)
1:A:294[A]:GLN:HG3	1:A:296:TYR:CZ	2.29	0.68
6:A:1639:GOL:O3	7:A:2418:HOH:O	2.15	0.62
1:A:599:TRP:CD2	1:A:600:PRO:HA	2.36	0.61
1:A:102:GLU:HB3	4:A:1631[A]:R5A:HAG	1.82	0.61
1:A:382:TPQ:O5	4:A:1631[A]:R5A:HM12	2.08	0.54

There are no symmetry-related clashes.

5.3 Torsion angles [i](#)

5.3.1 Protein backbone [i](#)

In the following table, the Percentiles column shows the percent Ramachandran outliers of the chain as a percentile score with respect to all X-ray entries followed by that with respect to entries of similar resolution.

The Analysed column shows the number of residues for which the backbone conformation was analysed, and the total number of residues.

Mol	Chain	Analysed	Favoured	Allowed	Outliers	Percentiles
1	A	626/646 (97%)	608 (97%)	18 (3%)	0	100 100

There are no Ramachandran outliers to report.

5.3.2 Protein sidechains [i](#)

In the following table, the Percentiles column shows the percent sidechain outliers of the chain as a percentile score with respect to all X-ray entries followed by that with respect to entries of similar resolution.

The Analysed column shows the number of residues for which the sidechain conformation was

analysed, and the total number of residues.

Mol	Chain	Analysed	Rotameric	Outliers	Percentiles
1	A	522/537 (97%)	518 (99%)	4 (1%)	79 76

All (4) residues with a non-rotameric sidechain are listed below:

Mol	Chain	Res	Type
1	A	358	LEU
1	A	369	ARG
1	A	376	PHE
1	A	444	ASP

Sometimes sidechains can be flipped to improve hydrogen bonding and reduce clashes. There are no such sidechains identified.

5.3.3 RNA ⓘ

There are no RNA molecules in this entry.

5.4 Non-standard residues in protein, DNA, RNA chains ⓘ

1 non-standard protein/DNA/RNA residue is modelled in this entry.

In the following table, the Counts columns list the number of bonds (or angles) for which Mogul statistics could be retrieved, the number of bonds (or angles) that are observed in the model and the number of bonds (or angles) that are defined in the Chemical Component Dictionary. The Link column lists molecule types, if any, to which the group is linked. The Z score for a bond length (or angle) is the number of standard deviations the observed value is removed from the expected value. A bond length (or angle) with $|Z| > 2$ is considered an outlier worth inspection. RMSZ is the root-mean-square of all Z scores of the bond lengths (or angles).

Mol	Type	Chain	Res	Link	Bond lengths			Bond angles		
					Counts	RMSZ	# $ Z > 2$	Counts	RMSZ	# $ Z > 2$
1	TPQ	A	382	1	13,14,15	1.44	2 (15%)	15,19,21	2.05	3 (20%)

In the following table, the Chirals column lists the number of chiral outliers, the number of chiral centers analysed, the number of these observed in the model and the number defined in the Chemical Component Dictionary. Similar counts are reported in the Torsion and Rings columns. '-' means no outliers of that kind were identified.

Mol	Type	Chain	Res	Link	Chirals	Torsions	Rings
1	TPQ	A	382	1	-	0/5/22/24	0/1/1/1

All (2) bond length outliers are listed below:

Mol	Chain	Res	Type	Atoms	Z	Observed(Å)	Ideal(Å)
1	A	382	TPQ	C3-C4	3.14	1.40	1.35
1	A	382	TPQ	O4-C4	-3.06	1.26	1.34

All (3) bond angle outliers are listed below:

Mol	Chain	Res	Type	Atoms	Z	Observed(°)	Ideal(°)
1	A	382	TPQ	CB-CA-C	-6.01	100.20	111.47
1	A	382	TPQ	C6-C1-C2	3.43	121.28	118.64
1	A	382	TPQ	O5-C5-C4	2.41	123.33	119.38

There are no chirality outliers.

There are no torsion outliers.

There are no ring outliers.

1 monomer is involved in 2 short contacts:

Mol	Chain	Res	Type	Clashes	Symm-Clashes
1	A	382	TPQ	2	0

5.5 Carbohydrates [i](#)

There are no oligosaccharides in this entry.

5.6 Ligand geometry [i](#)

Of 14 ligands modelled in this entry, 2 are monoatomic - leaving 12 for Mogul analysis.

In the following table, the Counts columns list the number of bonds (or angles) for which Mogul statistics could be retrieved, the number of bonds (or angles) that are observed in the model and the number of bonds (or angles) that are defined in the Chemical Component Dictionary. The Link column lists molecule types, if any, to which the group is linked. The Z score for a bond length (or angle) is the number of standard deviations the observed value is removed from the expected value. A bond length (or angle) with $|Z| > 2$ is considered an outlier worth inspection. RMSZ is the root-mean-square of all Z scores of the bond lengths (or angles).

Mol	Type	Chain	Res	Link	Bond lengths			Bond angles		
					Counts	RMSZ	$\# Z > 2$	Counts	RMSZ	$\# Z > 2$
6	GOL	A	1638	-	5,5,5	0.35	0	5,5,5	0.19	0
5	SO4	A	1642	-	4,4,4	0.11	0	6,6,6	0.29	0
6	GOL	A	1636	-	5,5,5	0.31	0	5,5,5	0.31	0
6	GOL	A	1637	-	5,5,5	0.35	0	5,5,5	0.18	0

Mol	Type	Chain	Res	Link	Bond lengths			Bond angles		
					Counts	RMSZ	# Z > 2	Counts	RMSZ	# Z > 2
6	GOL	A	1635	-	5,5,5	0.37	0	5,5,5	0.27	0
5	SO4	A	1634	-	4,4,4	0.15	0	6,6,6	0.25	0
4	R5A	A	1632[B]	-	52,64,64	3.60	20 (38%)	44,102,102	2.59	16 (36%)
4	R5A	A	1631[A]	-	52,64,64	3.58	20 (38%)	44,102,102	2.67	18 (40%)
6	GOL	A	1640	-	5,5,5	0.41	0	5,5,5	0.19	0
6	GOL	A	1639	-	5,5,5	0.36	0	5,5,5	0.08	0
6	GOL	A	1641	-	5,5,5	0.23	0	5,5,5	0.47	0
5	SO4	A	1633	-	4,4,4	0.11	0	6,6,6	0.17	0

In the following table, the Chirals column lists the number of chiral outliers, the number of chiral centers analysed, the number of these observed in the model and the number defined in the Chemical Component Dictionary. Similar counts are reported in the Torsion and Rings columns. '-' means no outliers of that kind were identified.

Mol	Type	Chain	Res	Link	Chirals	Torsions	Rings
6	GOL	A	1638	-	-	2/4/4/4	-
6	GOL	A	1636	-	-	0/4/4/4	-
6	GOL	A	1637	-	-	3/4/4/4	-
4	R5A	A	1632[B]	-	4/4/12/12	6/13/125/125	0/11/11/11
4	R5A	A	1631[A]	-	4/4/12/12	7/13/125/125	0/11/11/11
6	GOL	A	1640	-	-	2/4/4/4	-
6	GOL	A	1639	-	-	0/4/4/4	-
6	GOL	A	1641	-	-	0/4/4/4	-
6	GOL	A	1635	-	-	0/4/4/4	-

The worst 5 of 40 bond length outliers are listed below:

Mol	Chain	Res	Type	Atoms	Z	Observed(Å)	Ideal(Å)
4	A	1632[B]	R5A	CCB-NCA	-10.81	1.28	1.49
4	A	1631[A]	R5A	CCB-NCA	-10.79	1.28	1.49
4	A	1632[B]	R5A	CBB-NBA	-10.73	1.28	1.49
4	A	1631[A]	R5A	CBB-NBA	-10.67	1.28	1.49
4	A	1631[A]	R5A	CCD-CCE	-7.75	1.32	1.53

The worst 5 of 34 bond angle outliers are listed below:

Mol	Chain	Res	Type	Atoms	Z	Observed(°)	Ideal(°)
4	A	1631[A]	R5A	CBC-CBB-NBA	5.81	122.48	113.00
4	A	1632[B]	R5A	CBC-CBB-NBA	5.69	122.27	113.00
4	A	1632[B]	R5A	CCC-CCB-NCA	5.57	122.08	113.00

Continued on next page...

Continued from previous page...

Mol	Chain	Res	Type	Atoms	Z	Observed(°)	Ideal(°)
4	A	1631[A]	R5A	CCC-CCB-NCA	5.35	121.73	113.00
4	A	1632[B]	R5A	CBK-CBJ-CBI	5.24	120.32	111.44

5 of 8 chirality outliers are listed below:

Mol	Chain	Res	Type	Atom
4	A	1631[A]	R5A	CCG
4	A	1631[A]	R5A	CBF
4	A	1631[A]	R5A	CCF
4	A	1631[A]	R5A	CBG
4	A	1632[B]	R5A	CCG

5 of 20 torsion outliers are listed below:

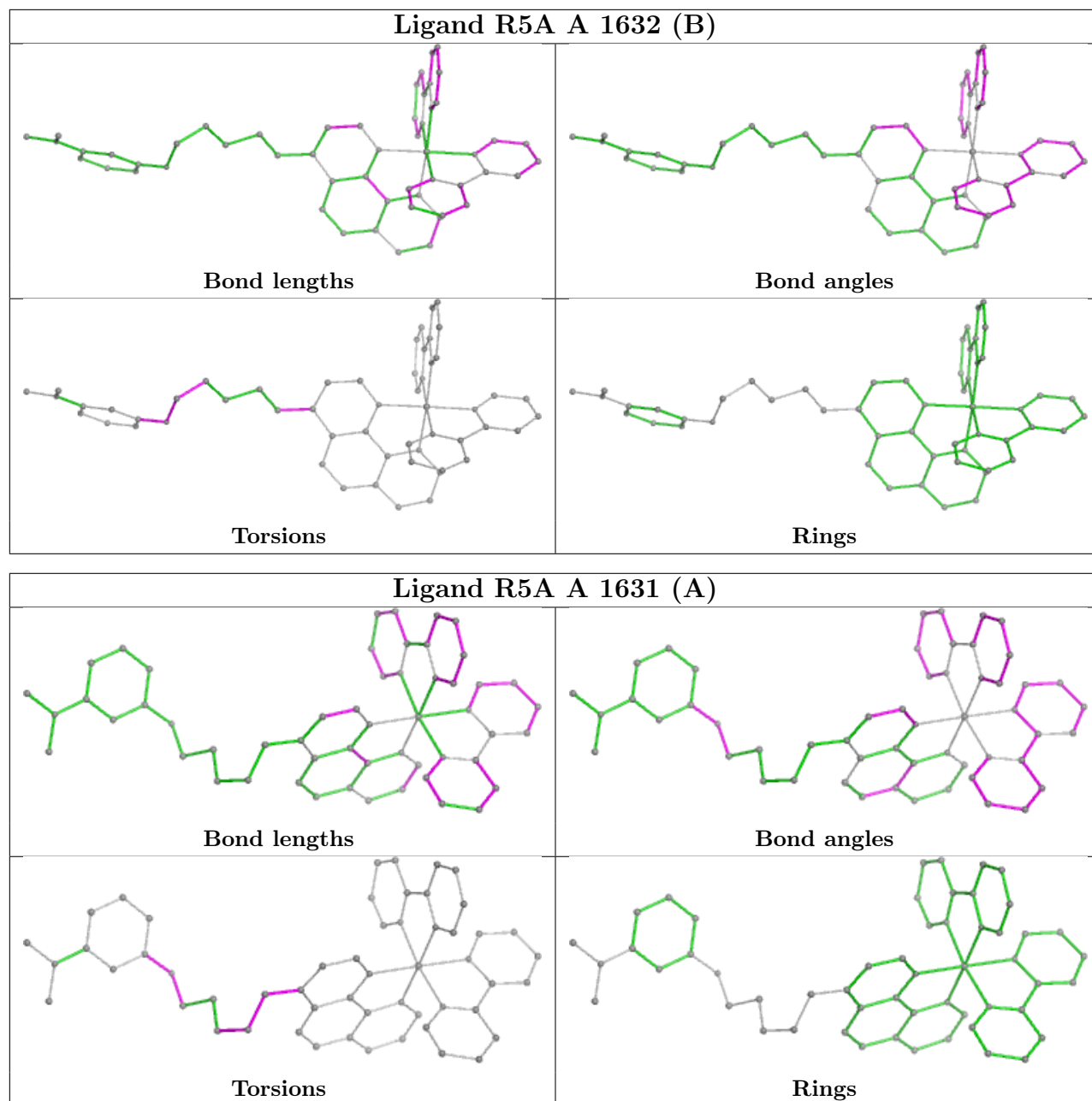
Mol	Chain	Res	Type	Atoms
4	A	1631[A]	R5A	CAH-CAG-CL0-CL1
4	A	1632[B]	R5A	CAH-CAG-CL0-CL1
6	A	1637	GOL	C1-C2-C3-O3
6	A	1638	GOL	C1-C2-C3-O3
4	A	1631[A]	R5A	CAG-CL0-CL1-CL2

There are no ring outliers.

4 monomers are involved in 17 short contacts:

Mol	Chain	Res	Type	Clashes	Symm-Clashes
4	A	1632[B]	R5A	4	0
4	A	1631[A]	R5A	11	0
6	A	1639	GOL	1	0
6	A	1641	GOL	1	0

The following is a two-dimensional graphical depiction of Mogul quality analysis of bond lengths, bond angles, torsion angles, and ring geometry for all instances of the Ligand of Interest. In addition, ligands with molecular weight > 250 and outliers as shown on the validation Tables will also be included. For torsion angles, if less than 5% of the Mogul distribution of torsion angles is within 10 degrees of the torsion angle in question, then that torsion angle is considered an outlier. Any bond that is central to one or more torsion angles identified as an outlier by Mogul will be highlighted in the graph. For rings, the root-mean-square deviation (RMSD) between the ring in question and similar rings identified by Mogul is calculated over all ring torsion angles. If the average RMSD is greater than 60 degrees and the minimal RMSD between the ring in question and any Mogul-identified rings is also greater than 60 degrees, then that ring is considered an outlier. The outliers are highlighted in purple. The color gray indicates Mogul did not find sufficient equivalents in the CSD to analyse the geometry.



5.7 Other polymers [i](#)

There are no such residues in this entry.

5.8 Polymer linkage issues [i](#)

There are no chain breaks in this entry.

6 Fit of model and data [i](#)

6.1 Protein, DNA and RNA chains [i](#)

In the following table, the column labelled ‘#RSRZ > 2’ contains the number (and percentage) of RSRZ outliers, followed by percent RSRZ outliers for the chain as percentile scores relative to all X-ray entries and entries of similar resolution. The OWAB column contains the minimum, median, 95th percentile and maximum values of the occupancy-weighted average B-factor per residue. The column labelled ‘Q < 0.9’ lists the number of (and percentage) of residues with an average occupancy less than 0.9.

Mol	Chain	Analysed	<RSRZ>	#RSRZ>2	OWAB(Å ²)	Q<0.9
1	A	619/646 (95%)	-0.57	8 (1%) 74 74	9, 18, 34, 70	9 (1%)

The worst 5 of 8 RSRZ outliers are listed below:

Mol	Chain	Res	Type	RSRZ
1	A	105	PHE	3.7
1	A	358	LEU	3.7
1	A	628	ASN	3.4
1	A	52	GLY	3.2
1	A	53	SER	3.0

6.2 Non-standard residues in protein, DNA, RNA chains [i](#)

In the following table, the Atoms column lists the number of modelled atoms in the group and the number defined in the chemical component dictionary. The B-factors column lists the minimum, median, 95th percentile and maximum values of B factors of atoms in the group. The column labelled ‘Q < 0.9’ lists the number of atoms with occupancy less than 0.9.

Mol	Type	Chain	Res	Atoms	RSCC	RSR	B-factors(Å ²)	Q<0.9
1	TPQ	A	382	14/15	0.94	0.09	14,24,44,54	0

6.3 Carbohydrates [i](#)

There are no monosaccharides in this entry.

6.4 Ligands [i](#)

In the following table, the Atoms column lists the number of modelled atoms in the group and the number defined in the chemical component dictionary. The B-factors column lists the minimum,

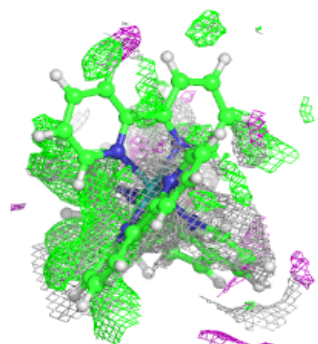
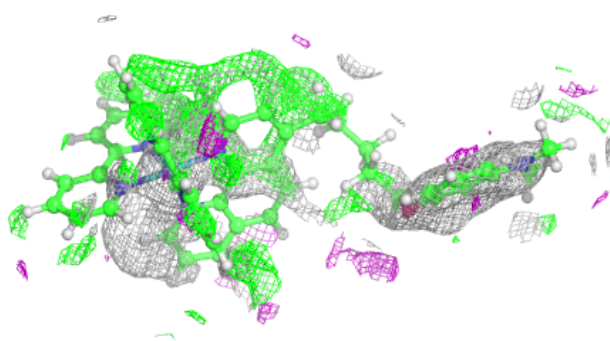
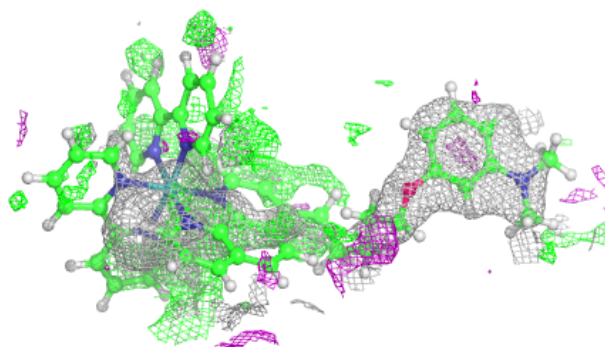
median, 95th percentile and maximum values of B factors of atoms in the group. The column labelled 'Q< 0.9' lists the number of atoms with occupancy less than 0.9.

Mol	Type	Chain	Res	Atoms	RSCC	RSR	B-factors(Å ²)	Q<0.9
4	R5A	A	1631[A]	54/54	0.67	0.37	36,47,54,54	97
5	SO4	A	1633	5/5	0.68	0.17	89,95,96,99	0
5	SO4	A	1634	5/5	0.68	0.17	67,75,81,83	0
6	GOL	A	1640	6/6	0.70	0.22	54,58,61,65	0
6	GOL	A	1637	6/6	0.73	0.21	68,73,76,77	0
4	R5A	A	1632[B]	54/54	0.75	0.29	36,46,50,54	97
6	GOL	A	1636	6/6	0.79	0.16	38,45,48,54	0
6	GOL	A	1641	6/6	0.81	0.16	34,49,53,59	0
6	GOL	A	1638	6/6	0.85	0.13	40,55,58,59	0
6	GOL	A	1639	6/6	0.86	0.14	37,59,67,67	0
5	SO4	A	1642	5/5	0.88	0.12	56,58,60,64	0
6	GOL	A	1635	6/6	0.89	0.11	27,31,34,36	0
2	CU	A	1629	1/1	0.99	0.10	28,28,28,28	0
3	NA	A	1630	1/1	0.99	0.15	26,26,26,26	0

The following is a graphical depiction of the model fit to experimental electron density of all instances of the Ligand of Interest. In addition, ligands with molecular weight > 250 and outliers as shown on the geometry validation Tables will also be included. Each fit is shown from different orientation to approximate a three-dimensional view.

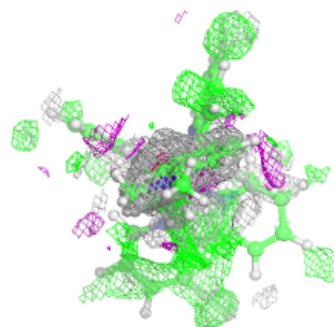
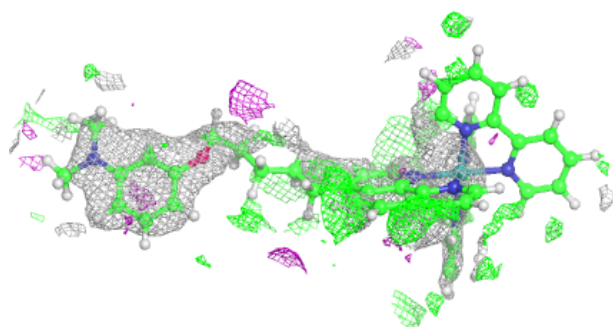
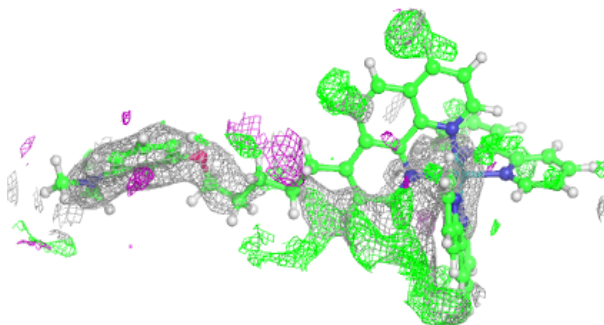
Electron density around R5A A 1631 (A):

2mF_o-DF_c (at 0.7 rmsd) in gray
mF_o-DF_c (at 3 rmsd) in purple (negative)
and green (positive)



Electron density around R5A A 1632 (B):

$2mF_o-DF_c$ (at 0.7 rmsd) in gray
 mF_o-DF_c (at 3 rmsd) in purple (negative)
and green (positive)



6.5 Other polymers [i](#)

There are no such residues in this entry.