



Full wwPDB X-ray Structure Validation Report ⓘ

Jun 17, 2024 – 04:30 PM EDT

PDB ID : 3BJ8
Title : Spermine/spermidine N1-acetyltransferase from mouse: Crystal structure of a ternary complex reveals solvent-mediated spermine binding
Authors : Montemayor, E.J.; Hoffman, D.W.
Deposited on : 2007-12-03
Resolution : 2.30 Å(reported)

This is a Full wwPDB X-ray Structure Validation Report for a publicly released PDB entry.

We welcome your comments at validation@mail.wwpdb.org

A user guide is available at

<https://www.wwpdb.org/validation/2017/XrayValidationReportHelp>

with specific help available everywhere you see the ⓘ symbol.

The types of validation reports are described at

<http://www.wwpdb.org/validation/2017/FAQs#types>.

The following versions of software and data (see [references ⓘ](#)) were used in the production of this report:

MolProbity	:	4.02b-467
Mogul	:	2022.3.0, CSD as543be (2022)
Xtriage (Phenix)	:	1.20.1
EDS	:	2.37.1
buster-report	:	1.1.7 (2018)
Percentile statistics	:	20191225.v01 (using entries in the PDB archive December 25th 2019)
Refmac	:	5.8.0158
CCP4	:	7.0.044 (Gargrove)
Ideal geometry (proteins)	:	Engh & Huber (2001)
Ideal geometry (DNA, RNA)	:	Parkinson et al. (1996)
Validation Pipeline (wwPDB-VP)	:	2.37.1

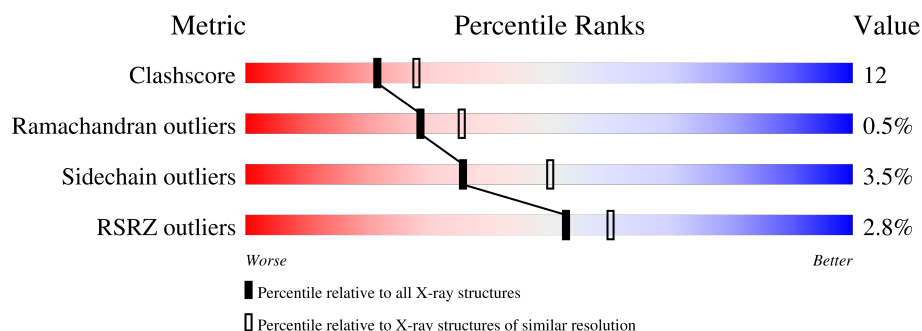
1 Overall quality at a glance

The following experimental techniques were used to determine the structure:

X-RAY DIFFRACTION

The reported resolution of this entry is 2.30 Å.

Percentile scores (ranging between 0-100) for global validation metrics of the entry are shown in the following graphic. The table shows the number of entries on which the scores are based.



Metric	Whole archive (#Entries)	Similar resolution (#Entries, resolution range(Å))
Clashscore	141614	5643 (2.30-2.30)
Ramachandran outliers	138981	5575 (2.30-2.30)
Sidechain outliers	138945	5575 (2.30-2.30)
RSRZ outliers	127900	4938 (2.30-2.30)

The table below summarises the geometric issues observed across the polymeric chains and their fit to the electron density. The red, orange, yellow and green segments of the lower bar indicate the fraction of residues that contain outliers for ≥ 3 , 2, 1 and 0 types of geometric quality criteria respectively. A grey segment represents the fraction of residues that are not modelled. The numeric value for each fraction is indicated below the corresponding segment, with a dot representing fractions $\leq 5\%$. The upper red bar (where present) indicates the fraction of residues that have poor fit to the electron density. The numeric value is given above the bar.

Mol	Chain	Length	Quality of chain
1	A	171	<div> <div>4%</div> <div> <div></div> <div>67%</div> <div>26%</div> <div>• 5%</div> </div> </div>
1	B	171	<div> <div>2%</div> <div> <div></div> <div>68%</div> <div>25%</div> <div>• 5%</div> </div> </div>
1	C	171	<div> <div>4%</div> <div> <div></div> <div>72%</div> <div>20%</div> <div>• 8%</div> </div> </div>
1	D	171	<div> <div></div> <div> <div></div> <div>75%</div> <div>18%</div> <div>• 6%</div> </div> </div>

2 Entry composition ⓘ

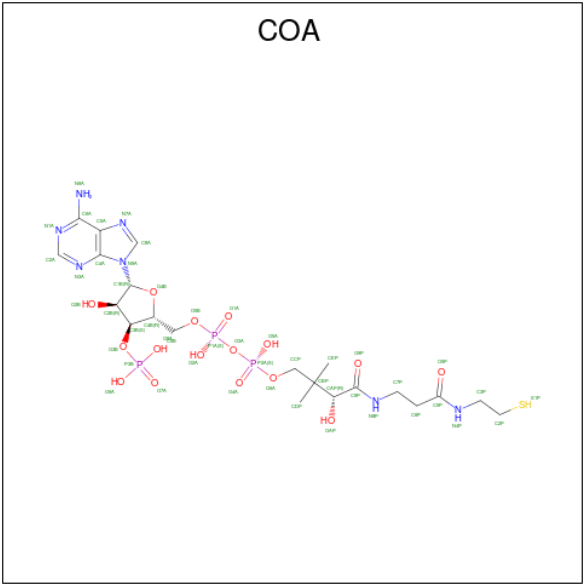
There are 4 unique types of molecules in this entry. The entry contains 5743 atoms, of which 0 are hydrogens and 0 are deuteriums.

In the tables below, the ZeroOcc column contains the number of atoms modelled with zero occupancy, the AltConf column contains the number of residues with at least one atom in alternate conformation and the Trace column contains the number of residues modelled with at most 2 atoms.

- Molecule 1 is a protein called Diamine acetyltransferase 1.

Mol	Chain	Residues	Atoms					ZeroOcc	AltConf	Trace
1	A	163	Total	C	N	O	S	0	0	0
			1347	879	217	241	10			
1	B	162	Total	C	N	O	S	0	0	0
			1342	876	216	240	10			
1	C	158	Total	C	N	O	S	0	0	0
			1298	847	208	233	10			
1	D	161	Total	C	N	O	S	0	0	0
			1337	873	215	239	10			

- Molecule 2 is COENZYME A (three-letter code: COA) (formula: C₂₁H₃₆N₇O₁₆P₃S).



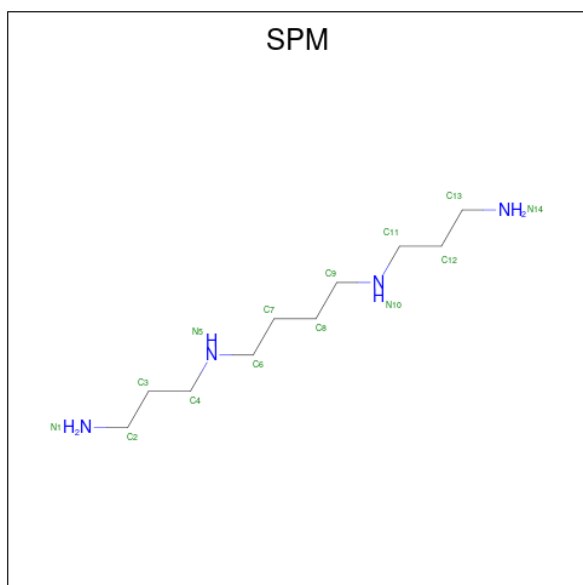
Mol	Chain	Residues	Atoms					ZeroOcc	AltConf
2	A	1	Total	C	N	O	P S	0	0
			48	21	7	16	3 1		
2	B	1	Total	C	N	O	P S	0	0
			48	21	7	16	3 1		

Continued on next page...

Continued from previous page...

Mol	Chain	Residues	Atoms						ZeroOcc	AltConf
2	C	1	Total	C	N	O	P	S	0	0
			48	21	7	16	3	1		
2	D	1	Total	C	N	O	P	S	0	0
			48	21	7	16	3	1		

- Molecule 3 is SPERMINE (three-letter code: SPM) (formula: $C_{10}H_{26}N_4$).



Mol	Chain	Residues	Atoms			ZeroOcc	AltConf
3	C	1	Total	C	N	0	0
			14	10	4		

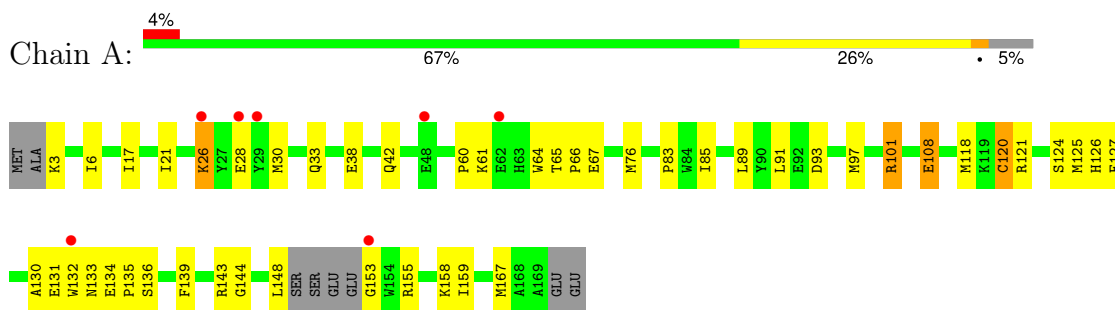
- Molecule 4 is water.

Mol	Chain	Residues	Atoms		ZeroOcc	AltConf
4	A	43	Total	O	0	0
			43	43		
4	B	57	Total	O	0	0
			57	57		
4	C	51	Total	O	0	0
			51	51		
4	D	62	Total	O	0	0
			62	62		

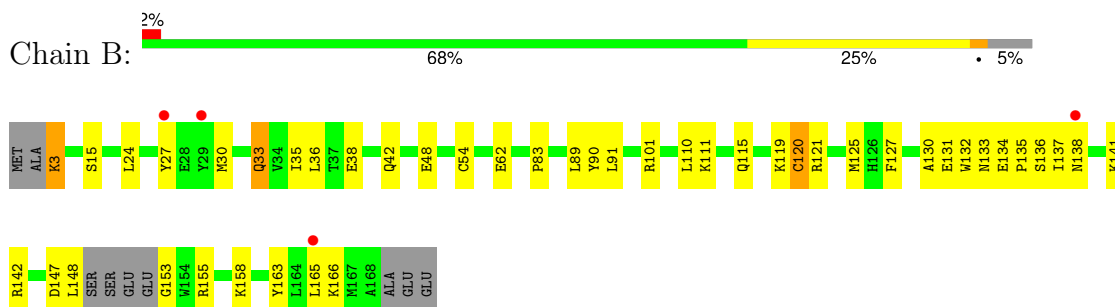
3 Residue-property plots [i](#)

These plots are drawn for all protein, RNA, DNA and oligosaccharide chains in the entry. The first graphic for a chain summarises the proportions of the various outlier classes displayed in the second graphic. The second graphic shows the sequence view annotated by issues in geometry and electron density. Residues are color-coded according to the number of geometric quality criteria for which they contain at least one outlier: green = 0, yellow = 1, orange = 2 and red = 3 or more. A red dot above a residue indicates a poor fit to the electron density ($RSRZ > 2$). Stretches of 2 or more consecutive residues without any outlier are shown as a green connector. Residues present in the sample, but not in the model, are shown in grey.

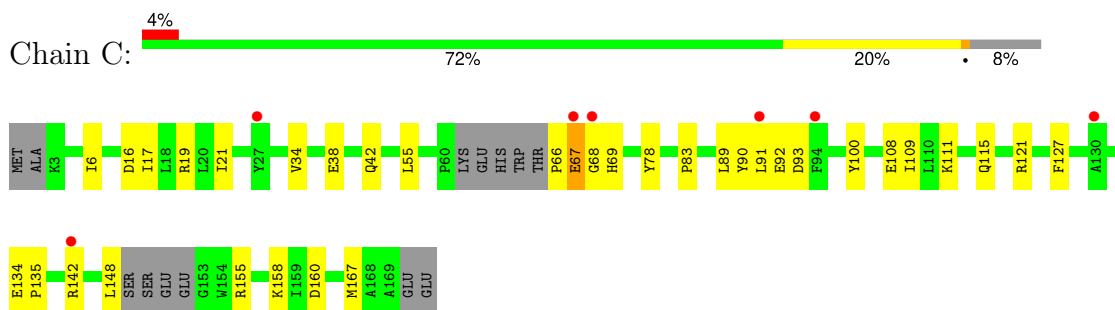
- Molecule 1: Diamine acetyltransferase 1



- Molecule 1: Diamine acetyltransferase 1

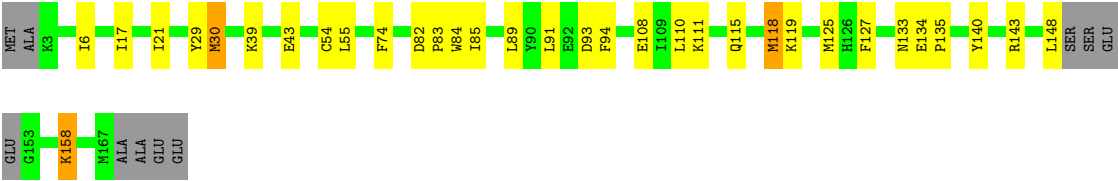


- Molecule 1: Diamine acetyltransferase 1



- Molecule 1: Diamine acetyltransferase 1





4 Data and refinement statistics

Property	Value	Source
Space group	P 21 21 21	Depositor
Cell constants a, b, c, α , β , γ	77.25Å 97.12Å 105.50Å 90.00° 90.00° 90.00°	Depositor
Resolution (Å)	33.98 – 2.30 33.98 – 2.29	Depositor EDS
% Data completeness (in resolution range)	98.0 (33.98-2.30) 94.5 (33.98-2.29)	Depositor EDS
R_{merge}	(Not available)	Depositor
R_{sym}	(Not available)	Depositor
$\langle I/\sigma(I) \rangle$ ¹	4.27 (at 2.29Å)	Xtriage
Refinement program	CNS 1.1	Depositor
R, R_{free}	0.232 , 0.289 0.227 , (Not available)	Depositor DCC
R_{free} test set	No test flags present.	wwPDB-VP
Wilson B-factor (Å ²)	33.6	Xtriage
Anisotropy	0.238	Xtriage
Bulk solvent k_{sol} (e/Å ³), B_{sol} (Å ²)	0.35 , 41.0	EDS
L-test for twinning ²	$\langle L \rangle = 0.48$, $\langle L^2 \rangle = 0.31$	Xtriage
Estimated twinning fraction	No twinning to report.	Xtriage
F_o, F_c correlation	0.93	EDS
Total number of atoms	5743	wwPDB-VP
Average B, all atoms (Å ²)	36.0	wwPDB-VP

Xtriage's analysis on translational NCS is as follows: *The largest off-origin peak in the Patterson function is 5.73% of the height of the origin peak. No significant pseudotranslation is detected.*

¹Intensities estimated from amplitudes.

²Theoretical values of $\langle |L| \rangle$, $\langle L^2 \rangle$ for acentric reflections are 0.5, 0.333 respectively for untwinned datasets, and 0.375, 0.2 for perfectly twinned datasets.

5 Model quality [i](#)

5.1 Standard geometry [i](#)

Bond lengths and bond angles in the following residue types are not validated in this section: SPM, COA

The Z score for a bond length (or angle) is the number of standard deviations the observed value is removed from the expected value. A bond length (or angle) with $|Z| > 5$ is considered an outlier worth inspection. RMSZ is the root-mean-square of all Z scores of the bond lengths (or angles).

Mol	Chain	Bond lengths		Bond angles	
		RMSZ	$\# Z > 5$	RMSZ	$\# Z > 5$
1	A	0.37	0/1385	0.55	0/1865
1	B	0.41	0/1380	0.57	0/1858
1	C	0.38	0/1332	0.56	0/1790
1	D	0.39	0/1375	0.58	0/1851
All	All	0.39	0/5472	0.57	0/7364

There are no bond length outliers.

There are no bond angle outliers.

There are no chirality outliers.

There are no planarity outliers.

5.2 Too-close contacts [i](#)

In the following table, the Non-H and H(model) columns list the number of non-hydrogen atoms and hydrogen atoms in the chain respectively. The H(added) column lists the number of hydrogen atoms added and optimized by MolProbity. The Clashes column lists the number of clashes within the asymmetric unit, whereas Symm-Clashes lists symmetry-related clashes.

Mol	Chain	Non-H	H(model)	H(added)	Clashes	Symm-Clashes
1	A	1347	0	1309	51	0
1	B	1342	0	1304	55	0
1	C	1298	0	1268	26	0
1	D	1337	0	1301	28	0
2	A	48	0	31	2	0
2	B	48	0	31	1	0
2	C	48	0	31	0	0
2	D	48	0	31	0	0
3	C	14	0	26	0	0

Continued on next page...

Continued from previous page...

Mol	Chain	Non-H	H(model)	H(added)	Clashes	Symm-Clashes
4	A	43	0	0	1	0
4	B	57	0	0	0	0
4	C	51	0	0	0	0
4	D	62	0	0	0	0
All	All	5743	0	5332	129	0

The all-atom clashscore is defined as the number of clashes found per 1000 atoms (including hydrogen atoms). The all-atom clashscore for this structure is 12.

All (129) close contacts within the same asymmetric unit are listed below, sorted by their clash magnitude.

Atom-1	Atom-2	Interatomic distance (Å)	Clash overlap (Å)
1:A:148:LEU:HD11	1:B:158:LYS:HD2	1.47	0.97
1:A:85:ILE:HA	1:B:35:ILE:HD11	1.54	0.88
1:B:133:ASN:ND2	1:B:136:SER:HB2	1.93	0.83
1:B:121:ARG:NE	1:B:121:ARG:HA	1.93	0.83
1:B:133:ASN:HD22	1:B:136:SER:HB2	1.43	0.83
1:A:131:GLU:HB3	1:B:155:ARG:HG3	1.64	0.79
1:C:66:PRO:HG2	1:C:69:HIS:O	1.90	0.71
1:A:21:ILE:HD12	1:B:83:PRO:HB3	1.72	0.71
1:A:134:GLU:HB3	1:A:135:PRO:HD3	1.72	0.70
1:A:155:ARG:HG3	1:B:131:GLU:HG2	1.73	0.69
1:C:6:ILE:HD12	1:C:108:GLU:HB3	1.76	0.67
1:A:153:GLY:O	1:B:131:GLU:HG3	1.94	0.66
1:D:94:PHE:HD2	1:D:140:TYR:HH	1.44	0.66
1:A:76:MET:CE	1:B:83:PRO:HG3	2.27	0.65
1:C:66:PRO:HG3	1:C:100:TYR:OH	1.95	0.65
1:A:28:GLU:O	1:A:30:MET:HG3	1.98	0.63
1:A:76:MET:HE2	1:B:83:PRO:HG3	1.80	0.63
1:B:3:LYS:N	1:B:3:LYS:HZ3	1.96	0.63
1:A:89:LEU:C	1:A:89:LEU:HD23	2.19	0.63
1:A:158:LYS:HD3	1:B:148:LEU:HD13	1.81	0.63
1:B:121:ARG:HA	1:B:121:ARG:HE	1.64	0.62
1:B:38:GLU:O	1:B:42:GLN:HG3	2.00	0.61
1:A:61:LYS:HA	1:A:64:TRP:NE1	2.16	0.61
1:A:155:ARG:CD	1:B:131:GLU:HG2	2.31	0.60
1:C:17:ILE:O	1:C:21:ILE:HG12	2.01	0.60
1:C:142:ARG:O	1:C:142:ARG:HD3	2.01	0.60
1:A:61:LYS:HA	1:A:64:TRP:CD1	2.37	0.59
1:B:120:CYS:O	1:B:121:ARG:HB2	2.02	0.59
1:D:91:LEU:HB3	1:D:127:PHE:HB3	1.84	0.59

Continued on next page...

Continued from previous page...

Atom-1	Atom-2	Interatomic distance (Å)	Clash overlap (Å)
1:A:17:ILE:O	1:A:21:ILE:HG12	2.04	0.58
1:B:133:ASN:HD22	1:B:136:SER:CB	2.15	0.58
1:A:155:ARG:CG	1:B:131:GLU:HG2	2.35	0.56
1:D:134:GLU:HB3	1:D:135:PRO:HD3	1.86	0.56
1:D:17:ILE:O	1:D:21:ILE:HG12	2.05	0.56
1:B:15:SER:HB2	1:B:38:GLU:OE1	2.06	0.56
1:B:142:ARG:HD2	2:B:401:COA:O9A	2.06	0.56
1:C:158:LYS:HB3	1:D:148:LEU:HD22	1.88	0.56
1:C:121:ARG:HH11	1:C:121:ARG:HG3	1.72	0.55
1:A:61:LYS:HA	1:A:64:TRP:CE2	2.41	0.55
1:A:167:MET:CE	1:B:110:LEU:HB3	2.37	0.55
1:A:83:PRO:O	1:B:36:LEU:HD12	2.05	0.55
1:A:131:GLU:HB3	1:B:155:ARG:CG	2.37	0.55
1:B:166:LYS:O	1:B:166:LYS:HD3	2.07	0.54
1:B:130:ALA:HB1	1:B:132:TRP:CE2	2.42	0.54
1:D:94:PHE:HD2	1:D:140:TYR:OH	1.91	0.54
1:A:143:ARG:HH11	1:A:143:ARG:HG3	1.73	0.54
1:A:85:ILE:HA	1:B:35:ILE:CD1	2.33	0.54
1:A:139:PHE:HE1	2:A:400:COA:H52A	1.72	0.54
1:A:30:MET:HB3	1:A:33:GLN:HG2	1.90	0.53
1:C:148:LEU:HD21	1:D:158:LYS:NZ	2.24	0.53
1:D:110:LEU:HD23	1:D:143:ARG:HD3	1.91	0.52
1:C:83:PRO:HB2	1:D:21:ILE:HD12	1.92	0.52
1:D:17:ILE:HD12	1:D:54:CYS:SG	2.50	0.51
1:A:97:MET:HE3	4:A:405:HOH:O	2.10	0.51
1:B:130:ALA:HB1	1:B:132:TRP:NE1	2.25	0.51
1:A:6:ILE:HD13	1:A:108:GLU:HB3	1.93	0.51
1:C:6:ILE:CD1	1:C:108:GLU:HB3	2.40	0.51
1:A:3:LYS:O	1:A:60:PRO:HD2	2.10	0.51
1:C:121:ARG:HG3	1:C:121:ARG:NH1	2.26	0.51
1:D:55:LEU:O	1:D:74:PHE:HA	2.11	0.50
1:B:62:GLU:H	1:B:62:GLU:CD	2.13	0.50
1:A:167:MET:HE1	1:B:110:LEU:HB3	1.94	0.49
1:B:35:ILE:HD12	1:B:36:LEU:N	2.27	0.49
1:B:166:LYS:HD3	1:B:166:LYS:C	2.31	0.49
1:D:6:ILE:HG13	1:D:108:GLU:CG	2.42	0.49
1:D:89:LEU:HD22	1:D:125:MET:HG3	1.96	0.48
1:A:30:MET:HB3	1:A:33:GLN:CG	2.44	0.47
1:A:38:GLU:O	1:A:42:GLN:HG3	2.14	0.47
1:B:134:GLU:HG3	1:B:138:ASN:ND2	2.29	0.47
1:D:6:ILE:HG13	1:D:108:GLU:HG3	1.97	0.47

Continued on next page...

Continued from previous page...

Atom-1	Atom-2	Interatomic distance (Å)	Clash overlap (Å)
1:A:130:ALA:HB1	1:A:132:TRP:NE1	2.29	0.47
1:A:65:THR:HB	1:A:66:PRO:HD2	1.97	0.47
1:B:27:TYR:HE1	1:B:101:ARG:HH22	1.63	0.47
1:C:167:MET:O	1:D:111:LYS:HG3	2.14	0.47
1:A:26:LYS:C	1:A:26:LYS:HD3	2.35	0.47
1:A:101:ARG:CZ	2:A:400:COA:H72	2.45	0.47
1:C:6:ILE:HD12	1:C:108:GLU:CB	2.45	0.46
1:C:38:GLU:O	1:C:42:GLN:HG3	2.14	0.46
1:A:131:GLU:HG2	1:B:153:GLY:O	2.16	0.46
1:D:89:LEU:C	1:D:89:LEU:HD23	2.36	0.46
1:A:6:ILE:N	1:A:6:ILE:HD12	2.31	0.46
1:A:76:MET:HE1	1:B:83:PRO:HG3	1.96	0.46
1:B:111:LYS:O	1:B:115:GLN:HG3	2.16	0.45
1:C:21:ILE:HD12	1:D:83:PRO:HB3	1.98	0.45
1:D:111:LYS:O	1:D:115:GLN:HG3	2.17	0.45
1:A:167:MET:O	1:B:111:LYS:HG3	2.18	0.44
1:C:16:ASP:O	1:C:19:ARG:HB3	2.17	0.44
1:B:91:LEU:HB3	1:B:127:PHE:HB3	1.99	0.44
1:B:120:CYS:O	1:B:120:CYS:SG	2.75	0.44
1:B:89:LEU:C	1:B:89:LEU:HD23	2.38	0.44
1:D:82:ASP:OD2	1:D:85:ILE:HG12	2.18	0.44
1:C:6:ILE:HD12	1:C:108:GLU:CG	2.48	0.44
1:A:67:GLU:H	1:A:67:GLU:CD	2.20	0.44
1:A:120:CYS:O	1:A:121:ARG:HB2	2.18	0.44
1:B:119:LYS:HE3	1:B:119:LYS:HB2	1.84	0.44
1:B:137:ILE:O	1:B:141:LYS:HG2	2.18	0.43
1:C:148:LEU:HD21	1:D:158:LYS:HZ2	1.82	0.43
1:C:111:LYS:O	1:C:115:GLN:HG3	2.17	0.43
1:C:91:LEU:HB3	1:C:127:PHE:HB3	2.01	0.43
1:A:159:ILE:HD12	1:B:125:MET:CE	2.49	0.43
1:C:34:VAL:HG22	1:D:84:TRP:CD1	2.54	0.43
1:A:136:SER:O	1:A:139:PHE:HB3	2.19	0.43
1:B:30:MET:O	1:B:33:GLN:HB2	2.18	0.43
1:B:134:GLU:N	1:B:135:PRO:CD	2.82	0.43
1:A:126:HIS:NE2	1:B:158:LYS:HE3	2.32	0.43
1:C:134:GLU:N	1:C:135:PRO:CD	2.81	0.42
1:C:158:LYS:HE2	1:C:160:ASP:OD2	2.19	0.42
1:C:6:ILE:HD13	1:C:109:ILE:HG13	2.00	0.42
1:C:78:TYR:CE1	1:C:92:GLU:HB2	2.55	0.42
1:B:134:GLU:HG3	1:B:138:ASN:HD21	1.85	0.42
1:D:133:ASN:OD1	1:D:135:PRO:HD2	2.20	0.42

Continued on next page...

Continued from previous page...

Atom-1	Atom-2	Interatomic distance (Å)	Clash overlap (Å)
1:B:89:LEU:HD22	1:B:125:MET:HG3	2.02	0.42
1:D:118:MET:HG3	1:D:119:LYS:N	2.34	0.42
1:A:118:MET:CE	1:B:165:LEU:HB2	2.50	0.41
1:B:35:ILE:HD12	1:B:35:ILE:C	2.40	0.41
1:D:89:LEU:O	1:D:125:MET:HA	2.20	0.41
1:A:124:SER:OG	1:B:158:LYS:HG3	2.20	0.41
1:A:144:GLY:HA3	1:B:163:TYR:CG	2.55	0.41
1:C:89:LEU:HD23	1:C:90:TYR:N	2.35	0.41
1:A:134:GLU:HB3	1:A:135:PRO:CD	2.48	0.41
1:B:165:LEU:C	1:B:165:LEU:HD23	2.40	0.41
1:A:65:THR:HB	1:A:66:PRO:CD	2.50	0.41
1:A:89:LEU:O	1:A:125:MET:HA	2.20	0.41
1:D:39:LYS:O	1:D:43:GLU:HG3	2.21	0.41
1:A:91:LEU:HB3	1:A:127:PHE:HB3	2.03	0.40
1:D:29:TYR:O	1:D:30:MET:HB3	2.21	0.40
1:B:89:LEU:HD23	1:B:90:TYR:N	2.36	0.40
1:D:6:ILE:HG12	1:D:108:GLU:HG2	2.03	0.40
1:D:82:ASP:HA	1:D:83:PRO:HD3	1.94	0.40

There are no symmetry-related clashes.

5.3 Torsion angles

5.3.1 Protein backbone

In the following table, the Percentiles column shows the percent Ramachandran outliers of the chain as a percentile score with respect to all X-ray entries followed by that with respect to entries of similar resolution.

The Analysed column shows the number of residues for which the backbone conformation was analysed, and the total number of residues.

Mol	Chain	Analysed	Favoured	Allowed	Outliers	Percentiles	
1	A	159/171 (93%)	158 (99%)	1 (1%)	0	100	100
1	B	158/171 (92%)	155 (98%)	3 (2%)	0	100	100
1	C	152/171 (89%)	147 (97%)	3 (2%)	2 (1%)	12	12
1	D	157/171 (92%)	154 (98%)	2 (1%)	1 (1%)	25	31
All	All	626/684 (92%)	614 (98%)	9 (1%)	3 (0%)	29	35

All (3) Ramachandran outliers are listed below:

Mol	Chain	Res	Type
1	D	30	MET
1	C	67	GLU
1	C	68	GLY

5.3.2 Protein sidechains ⓘ

In the following table, the Percentiles column shows the percent sidechain outliers of the chain as a percentile score with respect to all X-ray entries followed by that with respect to entries of similar resolution.

The Analysed column shows the number of residues for which the sidechain conformation was analysed, and the total number of residues.

Mol	Chain	Analysed	Rotameric	Outliers	Percentiles	
1	A	143/150 (95%)	137 (96%)	6 (4%)	30	42
1	B	143/150 (95%)	136 (95%)	7 (5%)	25	35
1	C	138/150 (92%)	134 (97%)	4 (3%)	42	58
1	D	143/150 (95%)	140 (98%)	3 (2%)	53	70
All	All	567/600 (94%)	547 (96%)	20 (4%)	36	50

All (20) residues with a non-rotameric sidechain are listed below:

Mol	Chain	Res	Type
1	A	26	LYS
1	A	93	ASP
1	A	101	ARG
1	A	108	GLU
1	A	120	CYS
1	A	133	ASN
1	B	3	LYS
1	B	24	LEU
1	B	33	GLN
1	B	48	GLU
1	B	54	CYS
1	B	120	CYS
1	B	147	ASP
1	C	55	LEU
1	C	67	GLU
1	C	93	ASP
1	C	155	ARG
1	D	93	ASP
1	D	118	MET

Continued on next page...

Continued from previous page...

Mol	Chain	Res	Type
1	D	158	LYS

Sometimes sidechains can be flipped to improve hydrogen bonding and reduce clashes. All (9) such sidechains are listed below:

Mol	Chain	Res	Type
1	A	115	GLN
1	A	133	ASN
1	B	133	ASN
1	B	138	ASN
1	C	42	GLN
1	C	49	HIS
1	C	115	GLN
1	D	69	HIS
1	D	112	ASN

5.3.3 RNA [i](#)

There are no RNA molecules in this entry.

5.4 Non-standard residues in protein, DNA, RNA chains [i](#)

There are no non-standard protein/DNA/RNA residues in this entry.

5.5 Carbohydrates [i](#)

There are no monosaccharides in this entry.

5.6 Ligand geometry [i](#)

5 ligands are modelled in this entry.

In the following table, the Counts columns list the number of bonds (or angles) for which Mogul statistics could be retrieved, the number of bonds (or angles) that are observed in the model and the number of bonds (or angles) that are defined in the Chemical Component Dictionary. The Link column lists molecule types, if any, to which the group is linked. The Z score for a bond length (or angle) is the number of standard deviations the observed value is removed from the expected value. A bond length (or angle) with $|Z| > 2$ is considered an outlier worth inspection. RMSZ is the root-mean-square of all Z scores of the bond lengths (or angles).

Mol	Type	Chain	Res	Link	Bond lengths			Bond angles		
					Counts	RMSZ	# Z > 2	Counts	RMSZ	# Z > 2
2	COA	B	401	-	43,50,50	2.86	18 (41%)	56,75,75	2.24	16 (28%)
2	COA	C	402	-	43,50,50	3.07	18 (41%)	56,75,75	2.22	19 (33%)
3	SPM	C	500	-	13,13,13	0.62	0	12,12,12	1.79	2 (16%)
2	COA	A	400	-	43,50,50	3.07	17 (39%)	56,75,75	2.06	14 (25%)
2	COA	D	403	-	43,50,50	3.10	18 (41%)	56,75,75	2.11	14 (25%)

In the following table, the Chirals column lists the number of chiral outliers, the number of chiral centers analysed, the number of these observed in the model and the number defined in the Chemical Component Dictionary. Similar counts are reported in the Torsion and Rings columns. '-' means no outliers of that kind were identified.

Mol	Type	Chain	Res	Link	Chirals	Torsions	Rings
2	COA	B	401	-	-	9/44/64/64	0/3/3/3
2	COA	C	402	-	-	13/44/64/64	0/3/3/3
3	SPM	C	500	-	-	2/11/11/11	-
2	COA	A	400	-	-	12/44/64/64	0/3/3/3
2	COA	D	403	-	-	6/44/64/64	0/3/3/3

All (71) bond length outliers are listed below:

Mol	Chain	Res	Type	Atoms	Z	Observed(Å)	Ideal(Å)
2	A	400	COA	P1A-O3A	-9.72	1.49	1.59
2	C	402	COA	P1A-O3A	-9.00	1.49	1.59
2	D	403	COA	P1A-O3A	-8.98	1.49	1.59
2	A	400	COA	C2A-N1A	8.04	1.48	1.33
2	D	403	COA	C2A-N1A	7.92	1.48	1.33
2	B	401	COA	C2A-N1A	7.81	1.47	1.33
2	C	402	COA	C2A-N1A	7.73	1.47	1.33
2	B	401	COA	P1A-O3A	-6.76	1.52	1.59
2	C	402	COA	O9P-C9P	6.33	1.35	1.23
2	D	403	COA	O9P-C9P	6.31	1.35	1.23
2	A	400	COA	O9P-C9P	5.86	1.34	1.23
2	D	403	COA	C2A-N3A	5.76	1.41	1.32
2	B	401	COA	O9P-C9P	5.74	1.34	1.23
2	B	401	COA	C2A-N3A	5.66	1.40	1.32
2	A	400	COA	C2A-N3A	5.59	1.40	1.32
2	C	402	COA	C2A-N3A	5.54	1.40	1.32
2	C	402	COA	CCP-CBP	5.47	1.61	1.52
2	D	403	COA	O5P-C5P	4.73	1.32	1.23
2	A	400	COA	O5P-C5P	4.70	1.32	1.23

Continued on next page...

Continued from previous page...

Mol	Chain	Res	Type	Atoms	Z	Observed(Å)	Ideal(Å)
2	D	403	COA	CCP-CBP	4.59	1.60	1.52
2	B	401	COA	CCP-CBP	4.56	1.60	1.52
2	B	401	COA	O5P-C5P	4.51	1.32	1.23
2	A	400	COA	CCP-CBP	4.39	1.59	1.52
2	A	400	COA	O4B-C4B	4.38	1.54	1.45
2	C	402	COA	O5P-C5P	4.28	1.31	1.23
2	B	401	COA	C3B-C4B	4.27	1.64	1.52
2	D	403	COA	C3B-C4B	4.23	1.63	1.52
2	C	402	COA	P3B-O3B	4.21	1.66	1.59
2	D	403	COA	O4B-C4B	4.19	1.54	1.45
2	C	402	COA	C3B-C4B	3.99	1.63	1.52
2	D	403	COA	P3B-O3B	3.92	1.66	1.59
2	C	402	COA	O4B-C4B	3.72	1.53	1.45
2	B	401	COA	O4B-C4B	3.70	1.53	1.45
2	A	400	COA	C3B-C4B	3.70	1.62	1.52
2	B	401	COA	P3B-O3B	3.64	1.65	1.59
2	D	403	COA	C3P-N4P	3.58	1.54	1.46
2	A	400	COA	C3P-N4P	3.47	1.54	1.46
2	A	400	COA	P3B-O3B	3.47	1.65	1.59
2	B	401	COA	O4B-C1B	3.40	1.45	1.40
2	A	400	COA	O4B-C1B	3.39	1.45	1.40
2	C	402	COA	OAP-CAP	3.38	1.48	1.42
2	A	400	COA	O3B-C3B	3.30	1.55	1.44
2	C	402	COA	O3B-C3B	3.19	1.55	1.44
2	D	403	COA	O4B-C1B	3.17	1.45	1.40
2	C	402	COA	P3B-O7A	3.09	1.60	1.50
2	B	401	COA	O3B-C3B	3.07	1.54	1.44
2	C	402	COA	O4B-C1B	3.05	1.44	1.40
2	D	403	COA	O3B-C3B	3.04	1.54	1.44
2	B	401	COA	P3B-O7A	2.92	1.59	1.50
2	C	402	COA	C3P-N4P	2.87	1.52	1.46
2	D	403	COA	P3B-O7A	2.71	1.58	1.50
2	D	403	COA	OAP-CAP	2.68	1.47	1.42
2	B	401	COA	CDP-CBP	2.66	1.59	1.53
2	B	401	COA	OAP-CAP	2.60	1.46	1.42
2	A	400	COA	P3B-O7A	2.54	1.58	1.50
2	C	402	COA	CDP-CBP	2.52	1.58	1.53
2	B	401	COA	C3P-N4P	2.49	1.51	1.46
2	A	400	COA	OAP-CAP	2.49	1.46	1.42
2	D	403	COA	C4A-N3A	2.48	1.39	1.35
2	A	400	COA	C4A-N3A	2.42	1.38	1.35
2	D	403	COA	C6A-C5A	2.35	1.52	1.43

Continued on next page...

Continued from previous page...

Mol	Chain	Res	Type	Atoms	Z	Observed(Å)	Ideal(Å)
2	B	401	COA	P1A-O5B	2.32	1.68	1.59
2	A	400	COA	CDP-CBP	2.26	1.58	1.53
2	D	403	COA	C2B-C3B	-2.25	1.48	1.53
2	C	402	COA	C4A-N3A	2.24	1.38	1.35
2	C	402	COA	C6A-C5A	2.24	1.51	1.43
2	D	403	COA	CDP-CBP	2.22	1.58	1.53
2	A	400	COA	C6A-C5A	2.19	1.51	1.43
2	C	402	COA	C2B-C3B	-2.18	1.48	1.53
2	B	401	COA	C6A-C5A	2.11	1.51	1.43
2	B	401	COA	C4A-N3A	2.03	1.38	1.35

All (65) bond angle outliers are listed below:

Mol	Chain	Res	Type	Atoms	Z	Observed(°)	Ideal(°)
2	C	402	COA	O4B-C1B-N9A	-8.15	97.94	108.75
2	B	401	COA	O4B-C1B-N9A	-8.06	98.06	108.75
2	D	403	COA	O4B-C1B-N9A	-7.41	98.91	108.75
2	A	400	COA	O4B-C1B-N9A	-6.41	100.24	108.75
2	B	401	COA	O4B-C4B-C5B	6.18	129.14	109.33
2	B	401	COA	C1B-N9A-C4A	-5.59	116.82	126.64
2	C	402	COA	C1B-N9A-C4A	-5.54	116.90	126.64
2	D	403	COA	C1B-N9A-C4A	-5.37	117.20	126.64
2	D	403	COA	O4B-C4B-C5B	5.35	126.47	109.33
2	A	400	COA	C1B-N9A-C4A	-5.13	117.62	126.64
3	C	500	SPM	C11-N10-C9	5.11	137.59	113.40
2	A	400	COA	O4B-C4B-C5B	5.03	125.46	109.33
2	C	402	COA	O4B-C4B-C5B	4.94	125.15	109.33
2	B	401	COA	N3A-C2A-N1A	-4.25	122.91	128.67
2	D	403	COA	N3A-C2A-N1A	-4.20	122.97	128.67
2	A	400	COA	N3A-C2A-N1A	-4.16	123.03	128.67
2	C	402	COA	N3A-C2A-N1A	-3.95	123.31	128.67
2	B	401	COA	P3B-O3B-C3B	-3.92	112.95	123.43
2	A	400	COA	P3B-O3B-C3B	-3.88	113.06	123.43
2	C	402	COA	P3B-O3B-C3B	-3.78	113.34	123.43
2	D	403	COA	P3B-O3B-C3B	-3.60	113.82	123.43
2	A	400	COA	O3B-C3B-C2B	3.56	124.46	111.68
2	C	402	COA	CEP-CBP-CCP	-3.55	102.36	108.22
2	B	401	COA	C4A-C5A-N7A	3.31	112.83	109.34
2	D	403	COA	O3B-C3B-C2B	3.27	123.42	111.68
2	A	400	COA	C4A-C5A-N7A	3.25	112.77	109.34
2	B	401	COA	C4B-O4B-C1B	-3.20	106.99	109.92
2	D	403	COA	O2A-P1A-O3A	3.12	115.69	107.27

Continued on next page...

Continued from previous page...

Mol	Chain	Res	Type	Atoms	Z	Observed(°)	Ideal(°)
2	C	402	COA	C4A-C5A-N7A	3.10	112.61	109.34
2	B	401	COA	C3B-C2B-C1B	3.10	106.70	99.89
2	A	400	COA	O2A-P1A-O3A	3.09	115.62	107.27
2	D	403	COA	C4B-O4B-C1B	-3.03	107.15	109.92
2	D	403	COA	C4A-C5A-N7A	3.02	112.53	109.34
2	A	400	COA	CEP-CBP-CAP	2.99	113.87	108.77
2	D	403	COA	CEP-CBP-CCP	-2.93	103.39	108.22
2	C	402	COA	O3B-C3B-C2B	2.92	122.17	111.68
2	C	402	COA	O2A-P1A-O3A	2.92	115.17	107.27
2	A	400	COA	O3B-C3B-C4B	-2.86	99.96	110.03
2	C	402	COA	C3B-C2B-C1B	2.85	106.17	99.89
2	A	400	COA	O5B-C5B-C4B	-2.84	99.33	108.99
2	A	400	COA	C3B-C2B-C1B	2.79	106.02	99.89
2	B	401	COA	CEP-CBP-CCP	-2.77	103.65	108.22
2	A	400	COA	CEP-CBP-CCP	-2.74	103.69	108.22
2	C	402	COA	O5B-C5B-C4B	-2.72	99.73	108.99
2	B	401	COA	O3B-C3B-C2B	2.70	121.37	111.68
2	B	401	COA	C2P-C3P-N4P	-2.67	106.24	112.31
2	C	402	COA	CEP-CBP-CAP	2.67	113.32	108.77
2	D	403	COA	O5B-C5B-C4B	-2.61	100.11	108.99
2	D	403	COA	O3B-C3B-C4B	-2.59	100.89	110.03
2	B	401	COA	O3B-C3B-C4B	-2.59	100.92	110.03
2	B	401	COA	CEP-CBP-CAP	2.57	113.14	108.77
2	B	401	COA	O2A-P1A-O3A	2.57	114.21	107.27
2	B	401	COA	O3A-P1A-O1A	-2.56	102.99	110.70
2	D	403	COA	CEP-CBP-CAP	2.54	113.09	108.77
2	B	401	COA	C6P-C5P-N4P	-2.48	111.83	116.34
2	C	402	COA	C6P-C5P-N4P	-2.47	111.84	116.34
2	A	400	COA	O3A-P1A-O1A	-2.36	103.62	110.70
2	C	402	COA	C7P-N8P-C9P	2.33	126.74	122.55
2	C	402	COA	C2P-C3P-N4P	-2.30	107.09	112.31
3	C	500	SPM	C12-C11-N10	-2.29	105.91	112.07
2	C	402	COA	O3B-C3B-C4B	-2.20	102.27	110.03
2	C	402	COA	O3A-P1A-O1A	-2.19	104.11	110.70
2	D	403	COA	O3A-P1A-O1A	-2.13	104.28	110.70
2	C	402	COA	O6A-P2A-O4A	2.06	117.08	108.94
2	C	402	COA	CDP-CBP-CCP	2.02	111.56	108.22

There are no chirality outliers.

All (42) torsion outliers are listed below:

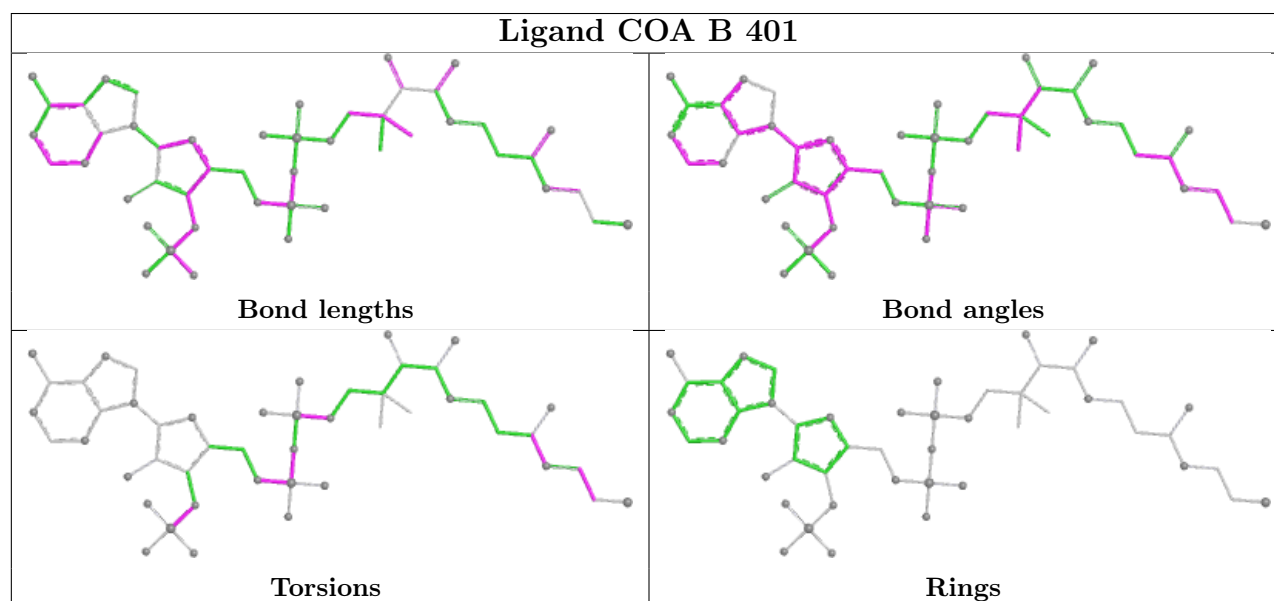
Mol	Chain	Res	Type	Atoms
2	A	400	COA	C5B-O5B-P1A-O3A
2	A	400	COA	N8P-C9P-CAP-OAP
2	A	400	COA	CAP-C9P-N8P-C7P
2	A	400	COA	O9P-C9P-N8P-C7P
2	A	400	COA	C6P-C5P-N4P-C3P
2	A	400	COA	O5P-C5P-N4P-C3P
2	A	400	COA	S1P-C2P-C3P-N4P
2	B	401	COA	C5B-O5B-P1A-O1A
2	B	401	COA	C5B-O5B-P1A-O2A
2	B	401	COA	C6P-C5P-N4P-C3P
2	C	402	COA	CDP-CBP-CCP-O6A
2	C	402	COA	CEP-CBP-CCP-O6A
2	C	402	COA	CAP-CBP-CCP-O6A
2	C	402	COA	O9P-C9P-CAP-OAP
2	C	402	COA	N8P-C9P-CAP-OAP
2	C	402	COA	CAP-C9P-N8P-C7P
2	D	403	COA	N8P-C9P-CAP-OAP
2	D	403	COA	O9P-C9P-N8P-C7P
2	D	403	COA	S1P-C2P-C3P-N4P
2	B	401	COA	O5P-C5P-N4P-C3P
2	C	402	COA	O5P-C5P-N4P-C3P
2	D	403	COA	O5P-C5P-N4P-C3P
2	D	403	COA	C6P-C5P-N4P-C3P
2	C	402	COA	O9P-C9P-N8P-C7P
2	C	402	COA	C6P-C5P-N4P-C3P
3	C	500	SPM	N1-C2-C3-C4
2	D	403	COA	CAP-C9P-N8P-C7P
2	C	402	COA	O9P-C9P-CAP-CBP
2	C	402	COA	N8P-C9P-CAP-CBP
3	C	500	SPM	C7-C8-C9-N10
2	B	401	COA	S1P-C2P-C3P-N4P
2	A	400	COA	C5B-O5B-P1A-O1A
2	B	401	COA	C5B-O5B-P1A-O3A
2	B	401	COA	CCP-O6A-P2A-O4A
2	C	402	COA	CCP-O6A-P2A-O4A
2	B	401	COA	C3B-O3B-P3B-O8A
2	A	400	COA	O5P-C5P-C6P-C7P
2	A	400	COA	N4P-C5P-C6P-C7P
2	A	400	COA	C4B-C5B-O5B-P1A
2	B	401	COA	P2A-O3A-P1A-O2A
2	C	402	COA	P2A-O3A-P1A-O2A
2	A	400	COA	C3B-O3B-P3B-O9A

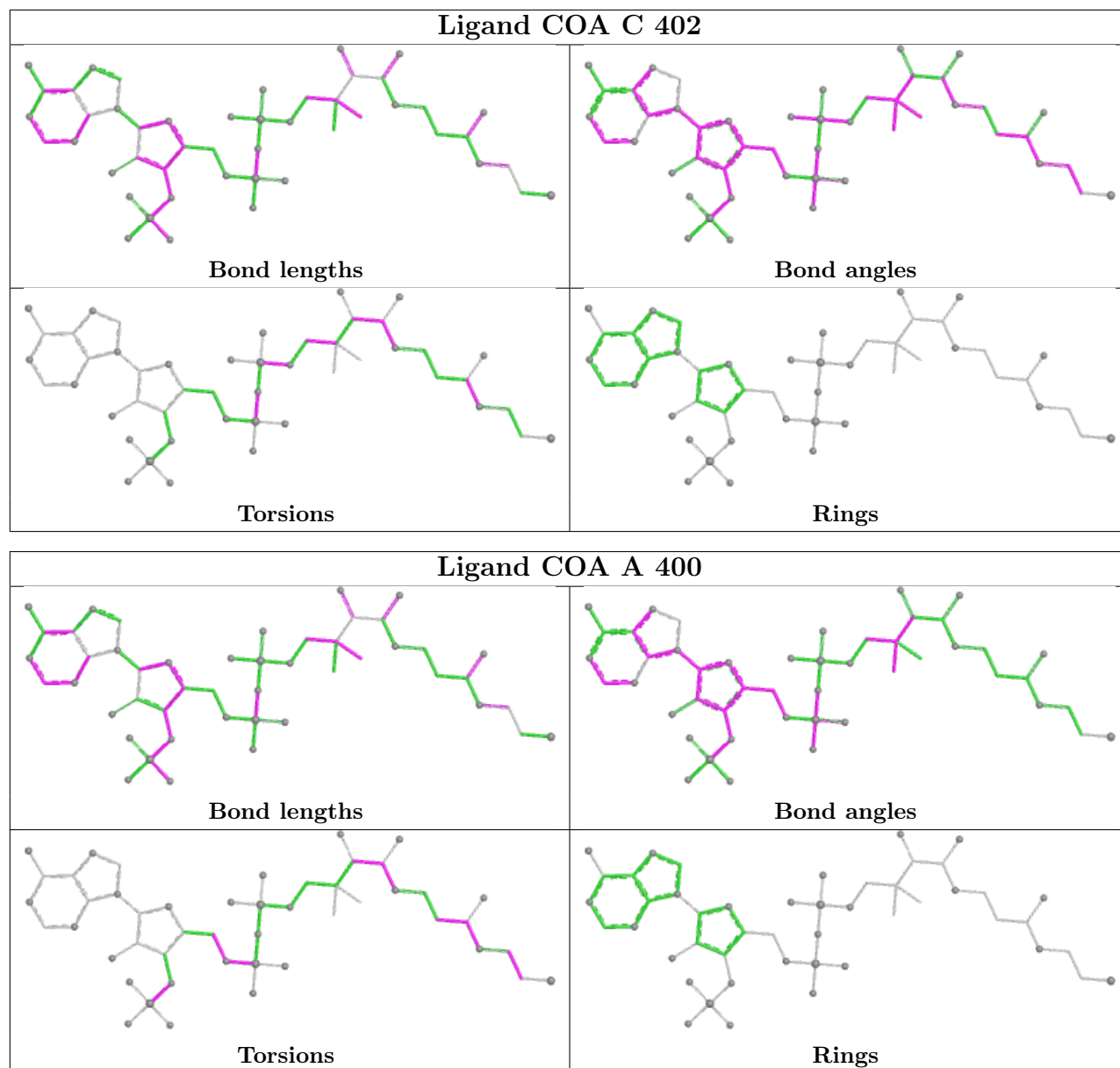
There are no ring outliers.

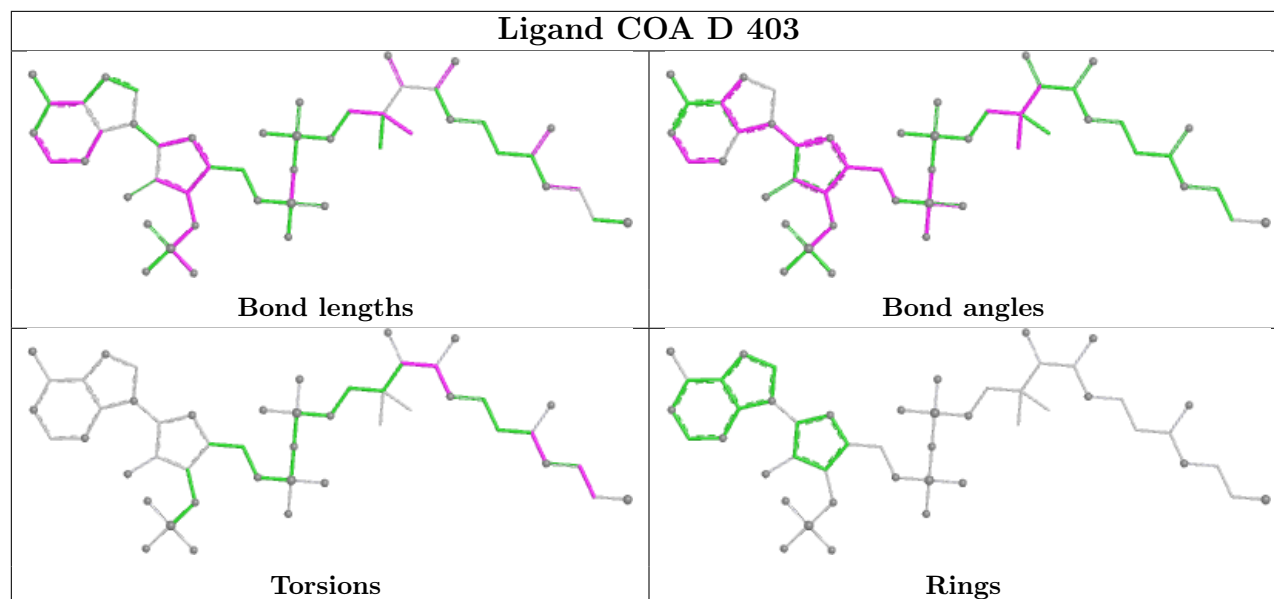
2 monomers are involved in 3 short contacts:

Mol	Chain	Res	Type	Clashes	Symm-Clashes
2	B	401	COA	1	0
2	A	400	COA	2	0

The following is a two-dimensional graphical depiction of Mogul quality analysis of bond lengths, bond angles, torsion angles, and ring geometry for all instances of the Ligand of Interest. In addition, ligands with molecular weight > 250 and outliers as shown on the validation Tables will also be included. For torsion angles, if less than 5% of the Mogul distribution of torsion angles is within 10 degrees of the torsion angle in question, then that torsion angle is considered an outlier. Any bond that is central to one or more torsion angles identified as an outlier by Mogul will be highlighted in the graph. For rings, the root-mean-square deviation (RMSD) between the ring in question and similar rings identified by Mogul is calculated over all ring torsion angles. If the average RMSD is greater than 60 degrees and the minimal RMSD between the ring in question and any Mogul-identified rings is also greater than 60 degrees, then that ring is considered an outlier. The outliers are highlighted in purple. The color gray indicates Mogul did not find sufficient equivalents in the CSD to analyse the geometry.







5.7 Other polymers [i](#)

There are no such residues in this entry.

5.8 Polymer linkage issues [i](#)

There are no chain breaks in this entry.

6 Fit of model and data

6.1 Protein, DNA and RNA chains

In the following table, the column labelled ‘#RSRZ> 2’ contains the number (and percentage) of RSRZ outliers, followed by percent RSRZ outliers for the chain as percentile scores relative to all X-ray entries and entries of similar resolution. The OWAB column contains the minimum, median, 95th percentile and maximum values of the occupancy-weighted average B-factor per residue. The column labelled ‘Q< 0.9’ lists the number of (and percentage) of residues with an average occupancy less than 0.9.

Mol	Chain	Analysed	<RSRZ>	#RSRZ>2	OWAB(Å ²)	Q<0.9
1	A	163/171 (95%)	0.13	7 (4%) 35 42	20, 38, 57, 83	0
1	B	162/171 (94%)	-0.01	4 (2%) 57 64	19, 30, 60, 72	0
1	C	158/171 (92%)	0.11	7 (4%) 34 41	22, 36, 55, 66	0
1	D	161/171 (94%)	-0.08	0 100 100	18, 30, 52, 61	0
All	All	644/684 (94%)	0.04	18 (2%) 53 60	18, 34, 57, 83	0

All (18) RSRZ outliers are listed below:

Mol	Chain	Res	Type	RSRZ
1	A	29	TYR	4.4
1	B	27	TYR	3.2
1	C	142	ARG	3.1
1	B	29	TYR	3.0
1	B	138	ASN	2.8
1	A	62	GLU	2.5
1	B	165	LEU	2.3
1	C	91	LEU	2.3
1	C	94	PHE	2.2
1	A	132	TRP	2.2
1	C	68	GLY	2.1
1	A	28	GLU	2.1
1	A	26	LYS	2.1
1	C	130	ALA	2.1
1	A	153	GLY	2.0
1	A	48	GLU	2.0
1	C	27	TYR	2.0
1	C	67	GLU	2.0

6.2 Non-standard residues in protein, DNA, RNA chains [i](#)

There are no non-standard protein/DNA/RNA residues in this entry.

6.3 Carbohydrates [i](#)

There are no monosaccharides in this entry.

6.4 Ligands [i](#)

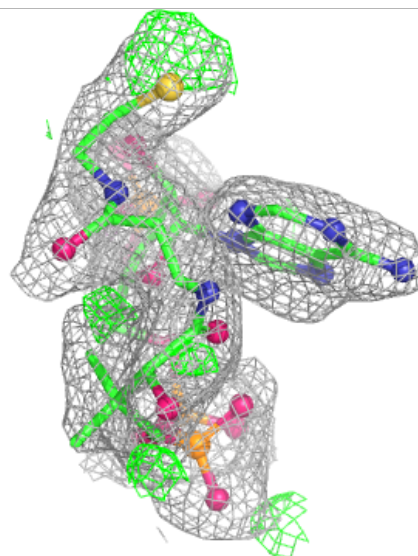
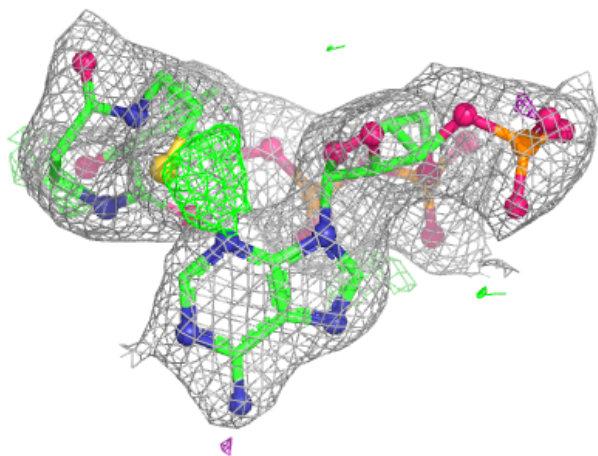
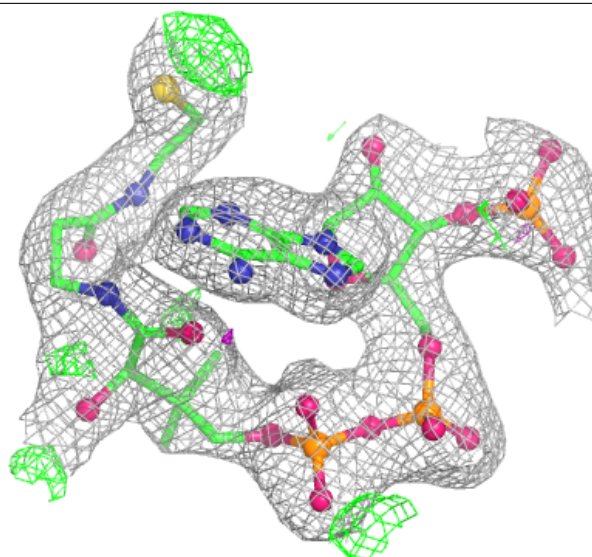
In the following table, the Atoms column lists the number of modelled atoms in the group and the number defined in the chemical component dictionary. The B-factors column lists the minimum, median, 95th percentile and maximum values of B factors of atoms in the group. The column labelled 'Q< 0.9' lists the number of atoms with occupancy less than 0.9.

Mol	Type	Chain	Res	Atoms	RSCC	RSR	B-factors(\AA^2)	Q<0.9
3	SPM	C	500	14/14	0.84	0.22	35,44,50,50	0
2	COA	C	402	48/48	0.93	0.15	32,40,53,54	0
2	COA	B	401	48/48	0.93	0.14	23,36,62,64	0
2	COA	D	403	48/48	0.94	0.17	31,54,66,71	0
2	COA	A	400	48/48	0.94	0.17	34,56,66,71	0

The following is a graphical depiction of the model fit to experimental electron density of all instances of the Ligand of Interest. In addition, ligands with molecular weight > 250 and outliers as shown on the geometry validation Tables will also be included. Each fit is shown from different orientation to approximate a three-dimensional view.

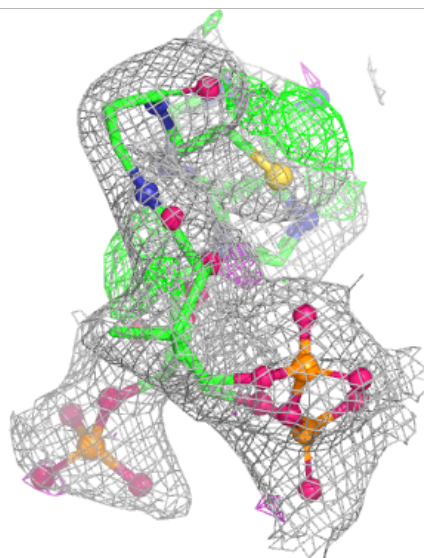
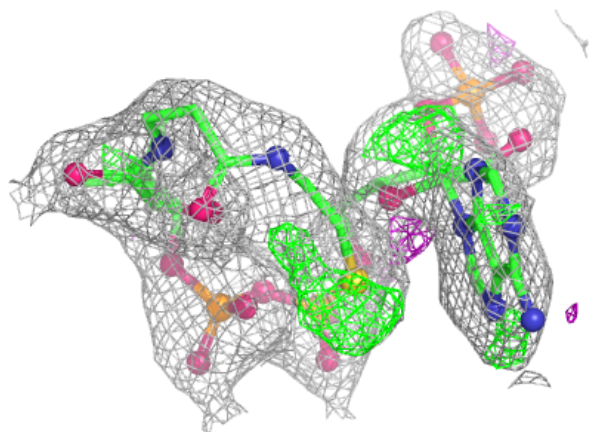
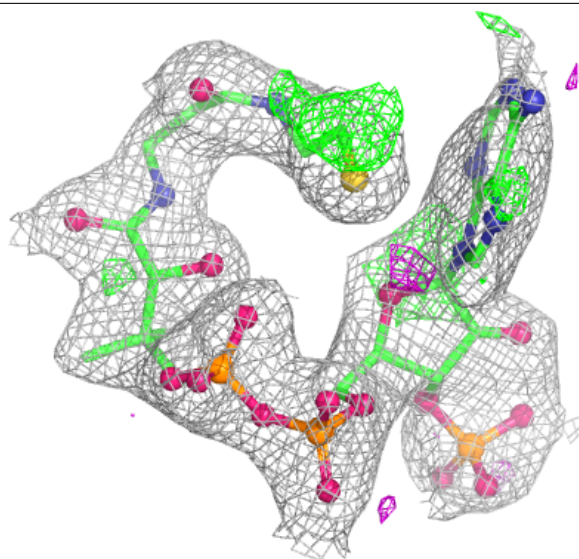
Electron density around COA C 402:

$2mF_o-DF_c$ (at 0.7 rmsd) in gray
 mF_o-DF_c (at 3 rmsd) in purple (negative)
and green (positive)



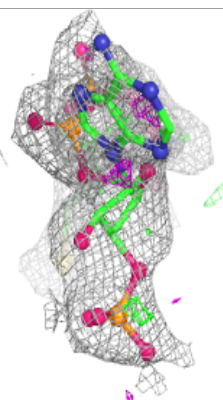
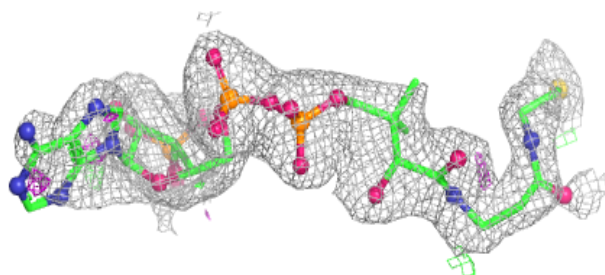
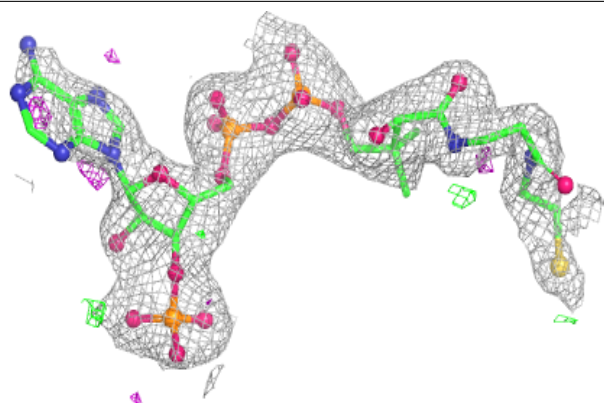
Electron density around COA B 401:

$2mF_o-DF_c$ (at 0.7 rmsd) in gray
 mF_o-DF_c (at 3 rmsd) in purple (negative)
and green (positive)

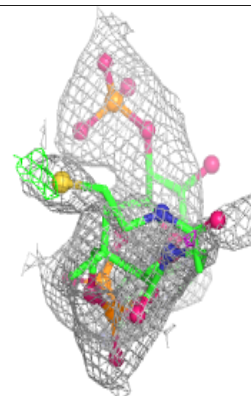
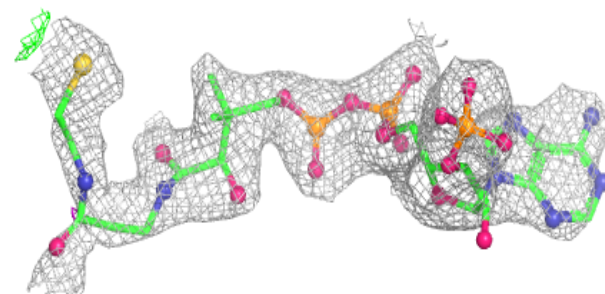
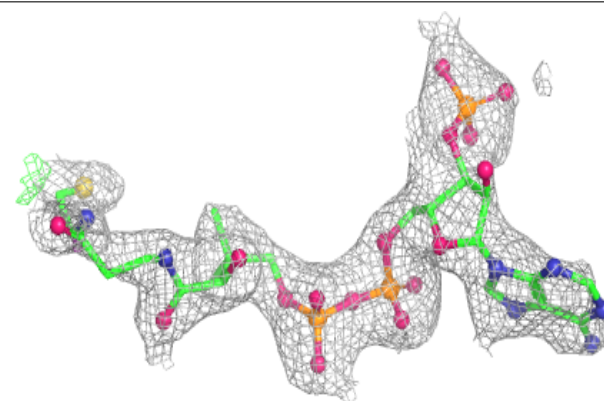


Electron density around COA D 403:

$2mF_o-DF_c$ (at 0.7 rmsd) in gray
 mF_o-DF_c (at 3 rmsd) in purple (negative)
and green (positive)

**Electron density around COA A 400:**

$2mF_o-DF_c$ (at 0.7 rmsd) in gray
 mF_o-DF_c (at 3 rmsd) in purple (negative)
and green (positive)



6.5 Other polymers [i](#)

There are no such residues in this entry.