



wwPDB X-ray Structure Validation Summary Report ⓘ

Apr 2, 2025 – 12:52 am BST

PDB ID : 2BHZ / pdb_00002bhz
Title : Crystal structure of Deinococcus radiodurans maltooligosyltrehalose trehalohydrolase in complex with maltose
Authors : Timmins, J.; Leiros, H.-K.S.; Leonard, G.; Leiros, I.; McSweeney, S.
Deposited on : 2005-01-20
Resolution : 1.20 Å(reported)

This is a wwPDB X-ray Structure Validation Summary Report for a publicly released PDB entry.

We welcome your comments at validation@mail.wwpdb.org

A user guide is available at

<https://www.wwpdb.org/validation/2017/XrayValidationReportHelp>

with specific help available everywhere you see the ⓘ symbol.

The types of validation reports are described at

<http://www.wwpdb.org/validation/2017/FAQs#types>.

The following versions of software and data (see [references ⓘ](#)) were used in the production of this report:

MolProbity : 4.02b-467
Mogul : 1.8.4, CSD as541be (2020)
Xtriage (Phenix) : 1.13
EDS : 3.0
Percentile statistics : 20231227.v01 (using entries in the PDB archive December 27th 2023)
CCP4 : 9.0.003 (Gargrove)
Density-Fitness : 1.0.11
Ideal geometry (proteins) : Engh & Huber (2001)
Ideal geometry (DNA, RNA) : Parkinson et al. (1996)
Validation Pipeline (wwPDB-VP) : 2.42

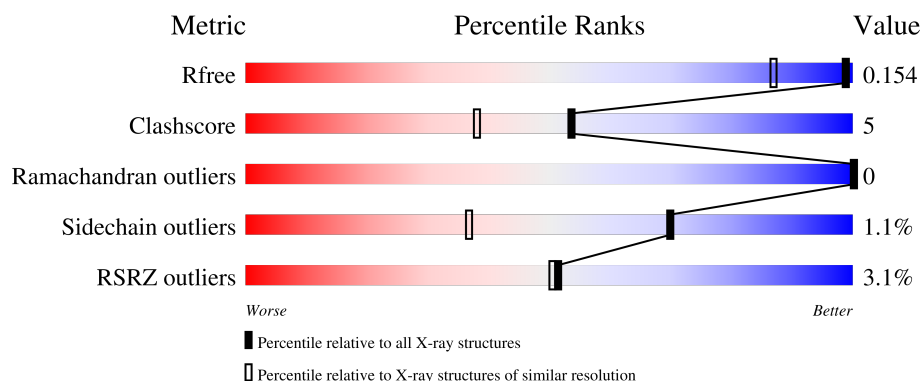
1 Overall quality at a glance

The following experimental techniques were used to determine the structure:

X-RAY DIFFRACTION

The reported resolution of this entry is 1.20 Å.

Percentile scores (ranging between 0-100) for global validation metrics of the entry are shown in the following graphic. The table shows the number of entries on which the scores are based.






Metric	Whole archive (#Entries)	Similar resolution (#Entries, resolution range(Å))
R_{free}	164625	1079 (1.20-1.20)
Clashscore	180529	1183 (1.20-1.20)
Ramachandran outliers	177936	1146 (1.20-1.20)
Sidechain outliers	177891	1146 (1.20-1.20)
RSRZ outliers	164620	1078 (1.20-1.20)

The table below summarises the geometric issues observed across the polymeric chains and their fit to the electron density. The red, orange, yellow and green segments of the lower bar indicate the fraction of residues that contain outliers for ≥ 3 , 2, 1 and 0 types of geometric quality criteria respectively. A grey segment represents the fraction of residues that are not modelled. The numeric value for each fraction is indicated below the corresponding segment, with a dot representing fractions $\leq 5\%$. The upper red bar (where present) indicates the fraction of residues that have poor fit to the electron density. The numeric value is given above the bar.

Mol	Chain	Length	Quality of chain
1	A	602	<div> <div>3%</div> <div> <div></div> <div>90%</div> <div>7%</div> <div>..</div> </div> </div>
2	B	2	<div> <div>100%</div> </div>
2	C	2	<div> <div>50%</div> <div>50%</div> </div>
2	D	2	<div> <div>50%</div> <div>50%</div> </div>
2	E	2	<div> <div>100%</div> </div>

Continued on next page...

Continued from previous page...

Mol	Chain	Length	Quality of chain
2	F	2	 50% 50%
2	G	2	 50% 50%
2	H	2	 50% 50%

The following table lists non-polymeric compounds, carbohydrate monomers and non-standard residues in protein, DNA, RNA chains that are outliers for geometric or electron-density-fit criteria:

Mol	Type	Chain	Res	Chirality	Geometry	Clashes	Electron density
2	GLC	B	1[A]	X	-	-	-
2	GLC	B	1[B]	X	-	-	-
2	GLC	C	1	X	-	-	-
2	GLC	D	1	X	-	-	-
2	GLC	E	1	X	-	-	-
2	GLC	F	1	X	-	-	-
2	GLC	G	1	X	-	-	-
2	GLC	H	1	X	-	-	-

2 Entry composition [i](#)

There are 6 unique types of molecules in this entry. The entry contains 6325 atoms, of which 0 are hydrogens and 0 are deuteriums.

In the tables below, the ZeroOcc column contains the number of atoms modelled with zero occupancy, the AltConf column contains the number of residues with at least one atom in alternate conformation and the Trace column contains the number of residues modelled with at most 2 atoms.

- Molecule 1 is a protein called MALTOOLIGOSYLTREHALOSE TREHALOHYDROLASE.

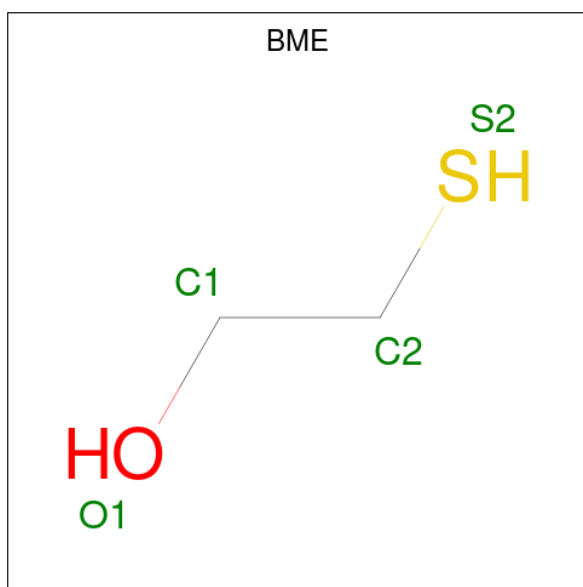
Mol	Chain	Residues	Atoms						ZeroOcc	AltConf	Trace
1	A	589	Total	C	N	O	S	Se	39	49	0
			5132	3243	917	959	2	11			

- Molecule 2 is an oligosaccharide called alpha-D-glucopyranose-(1-4)-alpha-D-glucopyranose.



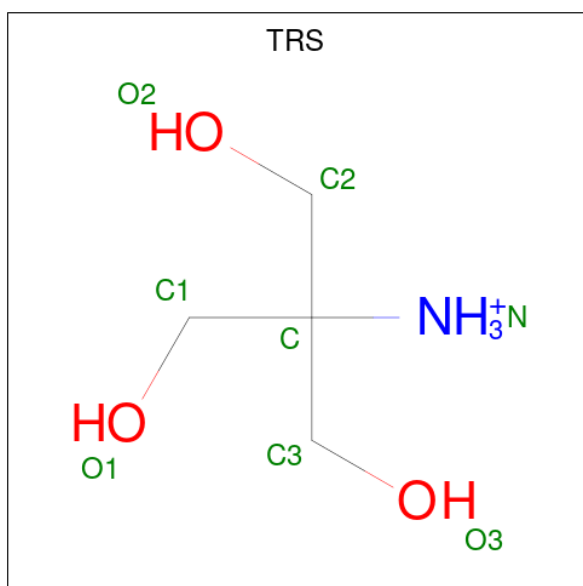
Mol	Chain	Residues	Atoms			ZeroOcc	AltConf	Trace
2	B	2	Total	C	O	0	2	0
			46	24	22			
2	C	2	Total	C	O	0	0	0
			23	12	11			
2	D	2	Total	C	O	0	0	0
			23	12	11			
2	E	2	Total	C	O	0	0	0
			23	12	11			
2	F	2	Total	C	O	0	0	0
			23	12	11			
2	G	2	Total	C	O	0	0	0
			23	12	11			
2	H	2	Total	C	O	0	0	0
			23	12	11			

- Molecule 3 is BETA-MERCAPTOETHANOL (CCD ID: BME) (formula: C₂H₆OS).



Mol	Chain	Residues	Atoms				ZeroOcc	AltConf
3	A	1	Total	C	O	S	0	0
			4	2	1	1		

- Molecule 4 is 2-AMINO-2-HYDROXYMETHYL-PROPANE-1,3-DIOL (CCD ID: TRS) (formula: $C_4H_{12}NO_3$).



Mol	Chain	Residues	Atoms				ZeroOcc	AltConf
4	A	1	Total	C	N	O	0	0
			8	4	1	3		

- Molecule 5 is MAGNESIUM ION (CCD ID: MG) (formula: Mg).

Mol	Chain	Residues	Atoms		ZeroOcc	AltConf
5	A	2	Total 2	Mg 2	0	0

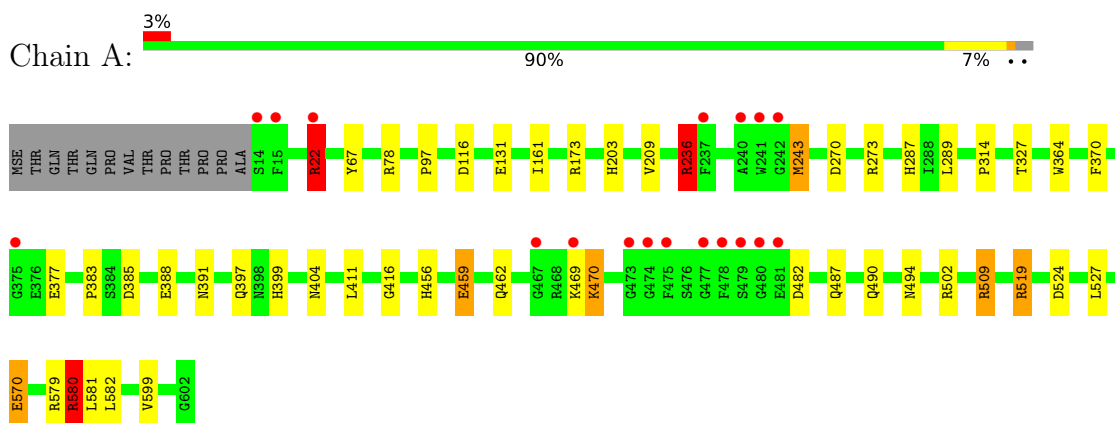
- Molecule 6 is water.

Mol	Chain	Residues	Atoms		ZeroOcc	AltConf
6	A	995	Total 995	O 995	0	0

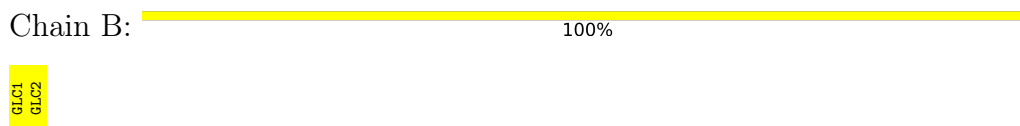
3 Residue-property plots [i](#)

These plots are drawn for all protein, RNA, DNA and oligosaccharide chains in the entry. The first graphic for a chain summarises the proportions of the various outlier classes displayed in the second graphic. The second graphic shows the sequence view annotated by issues in geometry and electron density. Residues are color-coded according to the number of geometric quality criteria for which they contain at least one outlier: green = 0, yellow = 1, orange = 2 and red = 3 or more. A red dot above a residue indicates a poor fit to the electron density ($RSRZ > 2$). Stretches of 2 or more consecutive residues without any outlier are shown as a green connector. Residues present in the sample, but not in the model, are shown in grey.

- Molecule 1: MALTOOLIGOSYLTREHALOSE TREHALOXYDROLASE



- Molecule 2: alpha-D-glucopyranose-(1-4)-alpha-D-glucopyranose



- Molecule 2: alpha-D-glucopyranose-(1-4)-alpha-D-glucopyranose



- Molecule 2: alpha-D-glucopyranose-(1-4)-alpha-D-glucopyranose



- Molecule 2: alpha-D-glucopyranose-(1-4)-alpha-D-glucopyranose





- Molecule 2: alpha-D-glucopyranose-(1-4)-alpha-D-glucopyranose

Chain F:



- Molecule 2: alpha-D-glucopyranose-(1-4)-alpha-D-glucopyranose

Chain G:



- Molecule 2: alpha-D-glucopyranose-(1-4)-alpha-D-glucopyranose

Chain H:



4 Data and refinement statistics

Property	Value	Source
Space group	P 21 21 21	Depositor
Cell constants a, b, c, α , β , γ	59.15Å 66.56Å 153.50Å 90.00° 90.00° 90.00°	Depositor
Resolution (Å)	76.70 – 1.20 76.70 – 1.20	Depositor EDS
% Data completeness (in resolution range)	99.0 (76.70-1.20) 99.0 (76.70-1.20)	Depositor EDS
R_{merge}	0.06	Depositor
R_{sym}	(Not available)	Depositor
$\langle I/\sigma(I) \rangle$ ¹	2.27 (at 1.20Å)	Xtriage
Refinement program	REFMAC 5.2.0003	Depositor
R, R_{free}	0.125 , 0.142 0.139 , 0.154	Depositor DCC
R_{free} test set	9432 reflections (5.03%)	wwPDB-VP
Wilson B-factor (Å ²)	8.6	Xtriage
Anisotropy	0.099	Xtriage
Bulk solvent k_{sol} (e/Å ³), B_{sol} (Å ²)	0.37 , 47.3	EDS
L-test for twinning ²	$\langle L \rangle = 0.49$, $\langle L^2 \rangle = 0.32$	Xtriage
Estimated twinning fraction	No twinning to report.	Xtriage
F_o, F_c correlation	0.97	EDS
Total number of atoms	6325	wwPDB-VP
Average B, all atoms (Å ²)	12.0	wwPDB-VP

Xtriage's analysis on translational NCS is as follows: *The largest off-origin peak in the Patterson function is 4.78% of the height of the origin peak. No significant pseudotranslation is detected.*

¹Intensities estimated from amplitudes.

²Theoretical values of $\langle |L| \rangle$, $\langle L^2 \rangle$ for acentric reflections are 0.5, 0.333 respectively for untwinned datasets, and 0.375, 0.2 for perfectly twinned datasets.

5 Model quality [i](#)

5.1 Standard geometry [i](#)

Bond lengths and bond angles in the following residue types are not validated in this section: BME, GLC, TRS, MG

The Z score for a bond length (or angle) is the number of standard deviations the observed value is removed from the expected value. A bond length (or angle) with $|Z| > 5$ is considered an outlier worth inspection. RMSZ is the root-mean-square of all Z scores of the bond lengths (or angles).

Mol	Chain	Bond lengths		Bond angles	
		RMSZ	$\# Z > 5$	RMSZ	$\# Z > 5$
1	A	12.91	27/5264 (0.5%)	4.61	35/7141 (0.5%)

Chiral center outliers are detected by calculating the chiral volume of a chiral center and verifying if the center is modelled as a planar moiety or with the opposite hand. A planarity outlier is detected by checking planarity of atoms in a peptide group, atoms in a mainchain group or atoms of a sidechain that are expected to be planar.

Mol	Chain	#Chirality outliers	#Planarity outliers
1	A	0	6

The worst 5 of 27 bond length outliers are listed below:

Mol	Chain	Res	Type	Atoms	Z	Observed(Å)	Ideal(Å)
1	A	22[A]	ARG	CZ-NH2	539.87	8.34	1.33
1	A	22[B]	ARG	CZ-NH2	539.87	8.34	1.33
1	A	236[A]	ARG	CZ-NH1	283.80	5.01	1.33
1	A	236[B]	ARG	CZ-NH1	283.80	5.01	1.33
1	A	470	LYS	CE-NZ	187.07	6.16	1.49

The worst 5 of 35 bond angle outliers are listed below:

Mol	Chain	Res	Type	Atoms	Z	Observed(°)	Ideal(°)
1	A	236[A]	ARG	NE-CZ-NH1	-171.79	34.40	120.30
1	A	236[B]	ARG	NE-CZ-NH1	-171.79	34.40	120.30
1	A	580[A]	ARG	NE-CZ-NH2	-148.17	46.21	120.30
1	A	580[B]	ARG	NE-CZ-NH2	-148.17	46.21	120.30
1	A	22[A]	ARG	NE-CZ-NH2	-126.60	57.00	120.30

There are no chirality outliers.

5 of 6 planarity outliers are listed below:

Mol	Chain	Res	Type	Group
1	A	22[A]	ARG	Sidechain
1	A	236[A]	ARG	Sidechain
1	A	509[A]	ARG	Sidechain
1	A	519[A]	ARG	Sidechain
1	A	570	GLU	Sidechain

5.2 Too-close contacts

In the following table, the Non-H and H(model) columns list the number of non-hydrogen atoms and hydrogen atoms in the chain respectively. The H(added) column lists the number of hydrogen atoms added and optimized by MolProbity. The Clashes column lists the number of clashes within the asymmetric unit, whereas Symm-Clashes lists symmetry-related clashes.

Mol	Chain	Non-H	H(model)	H(added)	Clashes	Symm-Clashes
1	A	5132	0	4847	45	0
2	B	46	0	42	0	0
2	C	23	0	21	0	0
2	D	23	0	20	0	0
2	E	23	0	21	0	0
2	F	23	0	21	0	0
2	G	23	0	21	0	0
2	H	23	0	21	1	0
3	A	4	0	5	0	0
4	A	8	0	12	4	0
5	A	2	0	0	0	0
6	A	995	0	0	20	0
All	All	6325	0	5031	50	0

The all-atom clashscore is defined as the number of clashes found per 1000 atoms (including hydrogen atoms). The all-atom clashscore for this structure is 5.

The worst 5 of 50 close contacts within the same asymmetric unit are listed below, sorted by their clash magnitude.

Atom-1	Atom-2	Interatomic distance (Å)	Clash overlap (Å)
1:A:327[B]:THR:HG22	6:A:2567:HOH:O	1.52	1.10
1:A:243[B]:MSE:SE	6:A:2478:HOH:O	2.24	1.06
1:A:580[B]:ARG:CZ	1:A:580[B]:ARG:NE	2.28	0.96
4:A:1611:TRS:C3	6:A:2995:HOH:O	2.23	0.85
1:A:236[B]:ARG:HD3	1:A:236[B]:ARG:NH1	1.95	0.81

There are no symmetry-related clashes.

5.3 Torsion angles

5.3.1 Protein backbone

In the following table, the Percentiles column shows the percent Ramachandran outliers of the chain as a percentile score with respect to all X-ray entries followed by that with respect to entries of similar resolution.

The Analysed column shows the number of residues for which the backbone conformation was analysed, and the total number of residues.

Mol	Chain	Analysed	Favoured	Allowed	Outliers	Percentiles	
1	A	642/602 (107%)	638 (99%)	4 (1%)	0	100	100

There are no Ramachandran outliers to report.

5.3.2 Protein sidechains

In the following table, the Percentiles column shows the percent sidechain outliers of the chain as a percentile score with respect to all X-ray entries followed by that with respect to entries of similar resolution.

The Analysed column shows the number of residues for which the sidechain conformation was analysed, and the total number of residues.

Mol	Chain	Analysed	Rotameric	Outliers	Percentiles	
1	A	526/475 (111%)	521 (99%)	5 (1%)	73	43

All (5) residues with a non-rotameric sidechain are listed below:

Mol	Chain	Res	Type
1	A	173	ARG
1	A	273	ARG
1	A	385	ASP
1	A	459	GLU
1	A	470	LYS

Sometimes sidechains can be flipped to improve hydrogen bonding and reduce clashes. 5 of 9 such sidechains are listed below:

Mol	Chain	Res	Type
1	A	399	HIS
1	A	487	GLN
1	A	378	HIS

Continued on next page...

Continued from previous page...

Mol	Chain	Res	Type
1	A	382	HIS
1	A	391	ASN

5.3.3 RNA ⓘ

There are no RNA molecules in this entry.

5.4 Non-standard residues in protein, DNA, RNA chains ⓘ

There are no non-standard protein/DNA/RNA residues in this entry.

5.5 Carbohydrates ⓘ

16 monosaccharides are modelled in this entry.

In the following table, the Counts columns list the number of bonds (or angles) for which Mogul statistics could be retrieved, the number of bonds (or angles) that are observed in the model and the number of bonds (or angles) that are defined in the Chemical Component Dictionary. The Link column lists molecule types, if any, to which the group is linked. The Z score for a bond length (or angle) is the number of standard deviations the observed value is removed from the expected value. A bond length (or angle) with $|Z| > 2$ is considered an outlier worth inspection. RMSZ is the root-mean-square of all Z scores of the bond lengths (or angles).

Mol	Type	Chain	Res	Link	Bond lengths			Bond angles		
					Counts	RMSZ	$\# Z > 2$	Counts	RMSZ	$\# Z > 2$
2	GLC	B	1[A]	2	12,12,12	0.47	0	17,17,17	0.67	0
2	GLC	B	1[B]	2	12,12,12	0.61	0	17,17,17	1.06	2 (11%)
2	GLC	B	2[A]	2	11,11,12	0.52	0	15,15,17	0.75	0
2	GLC	B	2[B]	2	11,11,12	0.40	0	15,15,17	0.87	1 (6%)
2	GLC	C	1	2	12,12,12	0.41	0	17,17,17	3.17	5 (29%)
2	GLC	C	2	2	11,11,12	0.73	0	15,15,17	0.38	0
2	GLC	D	1	2	12,12,12	0.48	0	17,17,17	3.54	4 (23%)
2	GLC	D	2	2	11,11,12	0.37	0	15,15,17	0.85	0
2	GLC	E	1	2	12,12,12	0.54	0	17,17,17	0.69	0
2	GLC	E	2	2	11,11,12	0.51	0	15,15,17	0.64	0
2	GLC	F	1	2	12,12,12	0.71	0	17,17,17	0.60	0
2	GLC	F	2	2	11,11,12	0.68	0	15,15,17	1.11	1 (6%)
2	GLC	G	1	2	12,12,12	0.69	0	17,17,17	0.75	0
2	GLC	G	2	2	11,11,12	0.57	0	15,15,17	0.84	1 (6%)
2	GLC	H	1	2	12,12,12	0.59	0	17,17,17	1.90	6 (35%)

Mol	Type	Chain	Res	Link	Bond lengths			Bond angles		
					Counts	RMSZ	# Z > 2	Counts	RMSZ	# Z > 2
2	GLC	H	2	2	11,11,12	0.99	1 (9%)	15,15,17	1.13	3 (20%)

In the following table, the Chirals column lists the number of chiral outliers, the number of chiral centers analysed, the number of these observed in the model and the number defined in the Chemical Component Dictionary. Similar counts are reported in the Torsion and Rings columns. '-' means no outliers of that kind were identified.

Mol	Type	Chain	Res	Link	Chirals	Torsions	Rings
2	GLC	B	1[A]	2	1/1/5/5	0/2/22/22	0/1/1/1
2	GLC	B	1[B]	2	1/1/5/5	1/2/22/22	0/1/1/1
2	GLC	B	2[A]	2	-	0/2/19/22	0/1/1/1
2	GLC	B	2[B]	2	-	0/2/19/22	0/1/1/1
2	GLC	C	1	2	1/1/5/5	0/2/22/22	0/1/1/1
2	GLC	C	2	2	-	0/2/19/22	0/1/1/1
2	GLC	D	1	2	1/1/5/5	0/2/22/22	0/1/1/1
2	GLC	D	2	2	-	1/2/19/22	0/1/1/1
2	GLC	E	1	2	1/1/5/5	0/2/22/22	0/1/1/1
2	GLC	E	2	2	-	0/2/19/22	0/1/1/1
2	GLC	F	1	2	1/1/5/5	0/2/22/22	0/1/1/1
2	GLC	F	2	2	-	0/2/19/22	0/1/1/1
2	GLC	G	1	2	1/1/5/5	0/2/22/22	0/1/1/1
2	GLC	G	2	2	-	0/2/19/22	0/1/1/1
2	GLC	H	1	2	1/1/5/5	1/2/22/22	0/1/1/1
2	GLC	H	2	2	-	2/2/19/22	0/1/1/1

All (1) bond length outliers are listed below:

Mol	Chain	Res	Type	Atoms	Z	Observed(Å)	Ideal(Å)
2	H	2	GLC	O5-C1	2.10	1.47	1.43

The worst 5 of 23 bond angle outliers are listed below:

Mol	Chain	Res	Type	Atoms	Z	Observed(°)	Ideal(°)
2	D	1	GLC	C1-O5-C5	-10.70	93.47	113.66
2	C	1	GLC	C1-O5-C5	-9.75	95.26	113.66
2	D	1	GLC	C1-C2-C3	-6.28	97.28	110.31
2	D	1	GLC	O1-C1-C2	5.81	125.39	109.03
2	C	1	GLC	C1-C2-C3	-5.66	98.57	110.31

5 of 8 chirality outliers are listed below:

Mol	Chain	Res	Type	Atom
2	B	1[A]	GLC	C1
2	B	1[B]	GLC	C1
2	C	1	GLC	C1
2	D	1	GLC	C1
2	E	1	GLC	C1

All (5) torsion outliers are listed below:

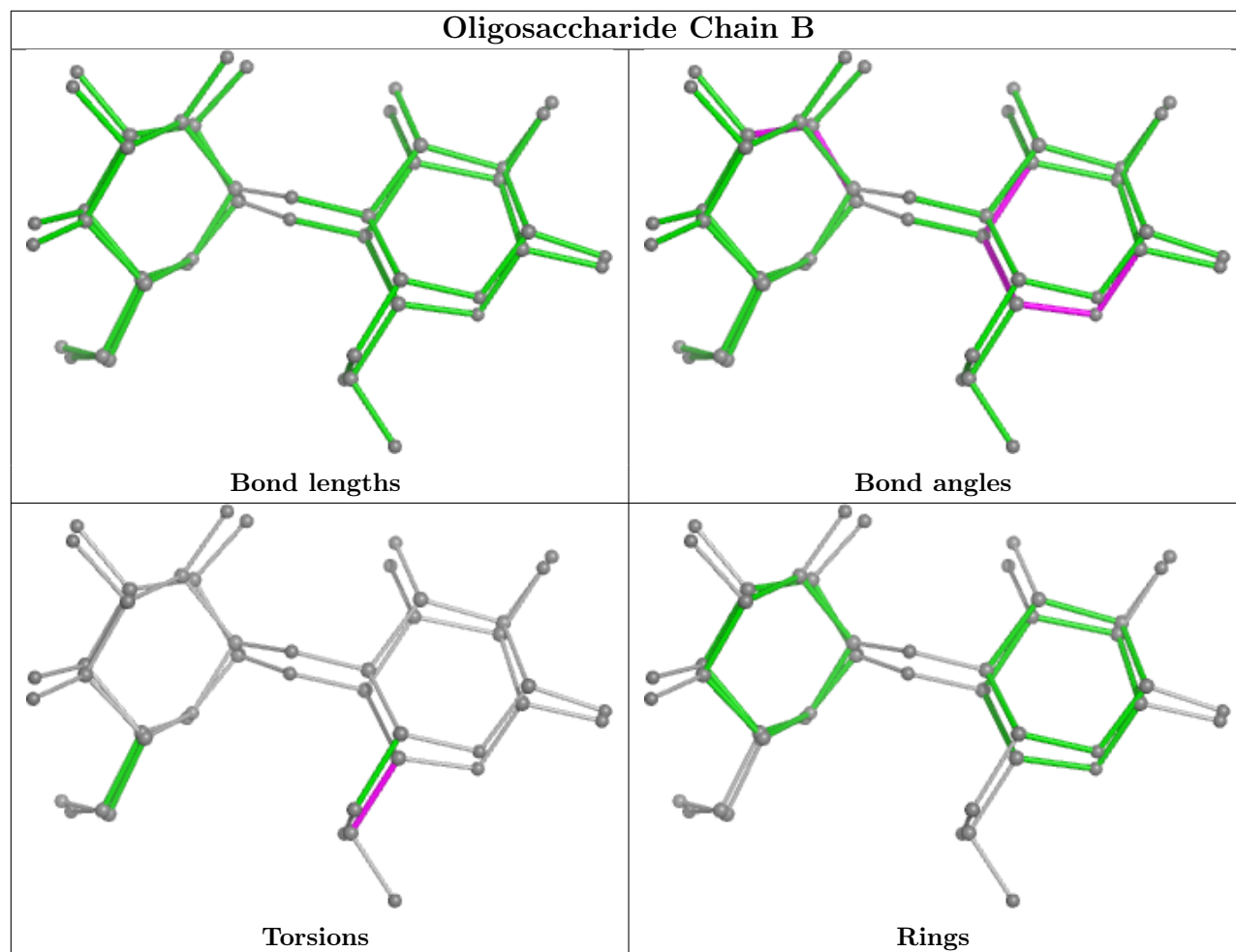
Mol	Chain	Res	Type	Atoms
2	H	2	GLC	C4-C5-C6-O6
2	H	2	GLC	O5-C5-C6-O6
2	B	1[B]	GLC	O5-C5-C6-O6
2	H	1	GLC	C4-C5-C6-O6
2	D	2	GLC	C4-C5-C6-O6

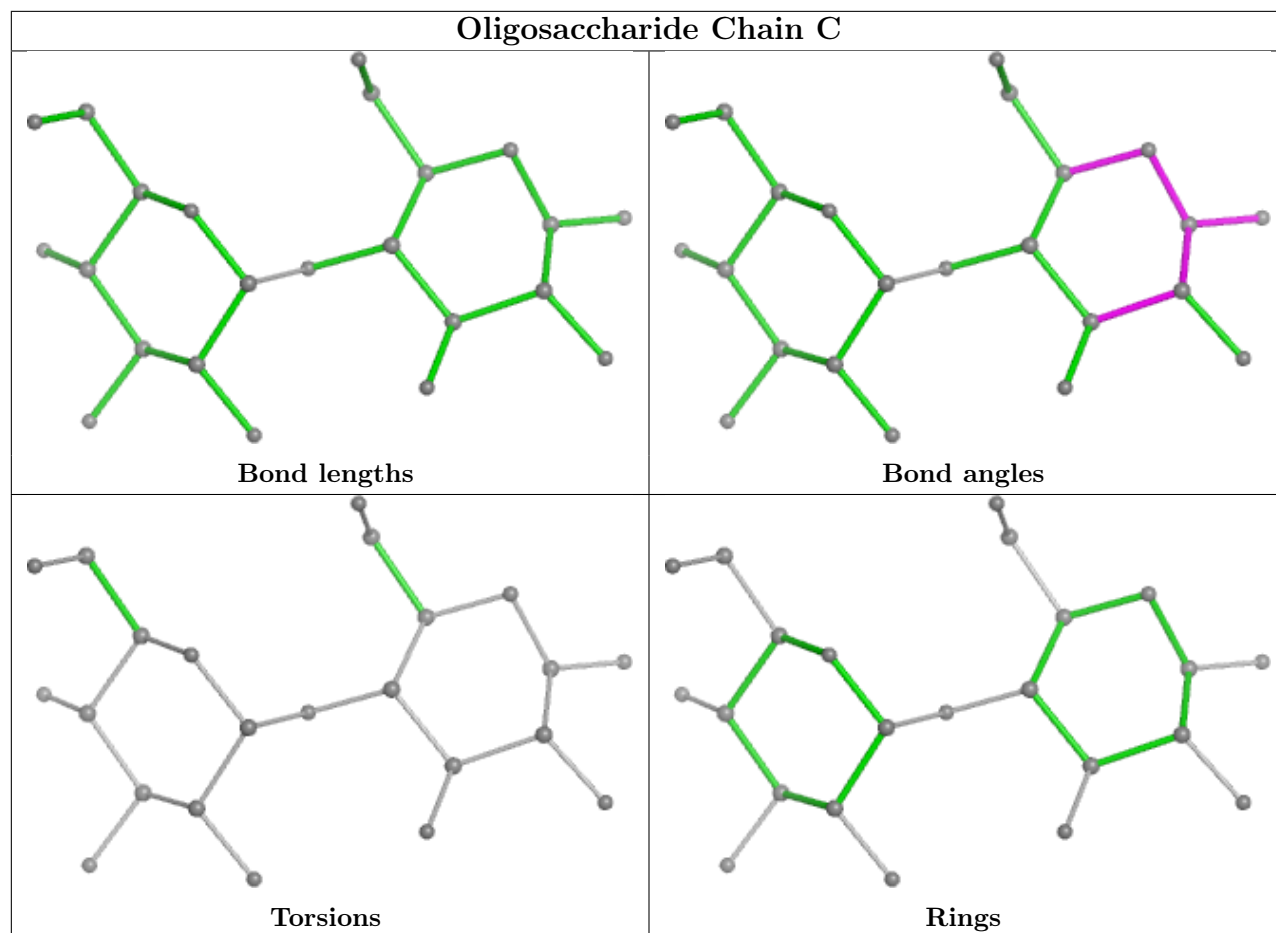
There are no ring outliers.

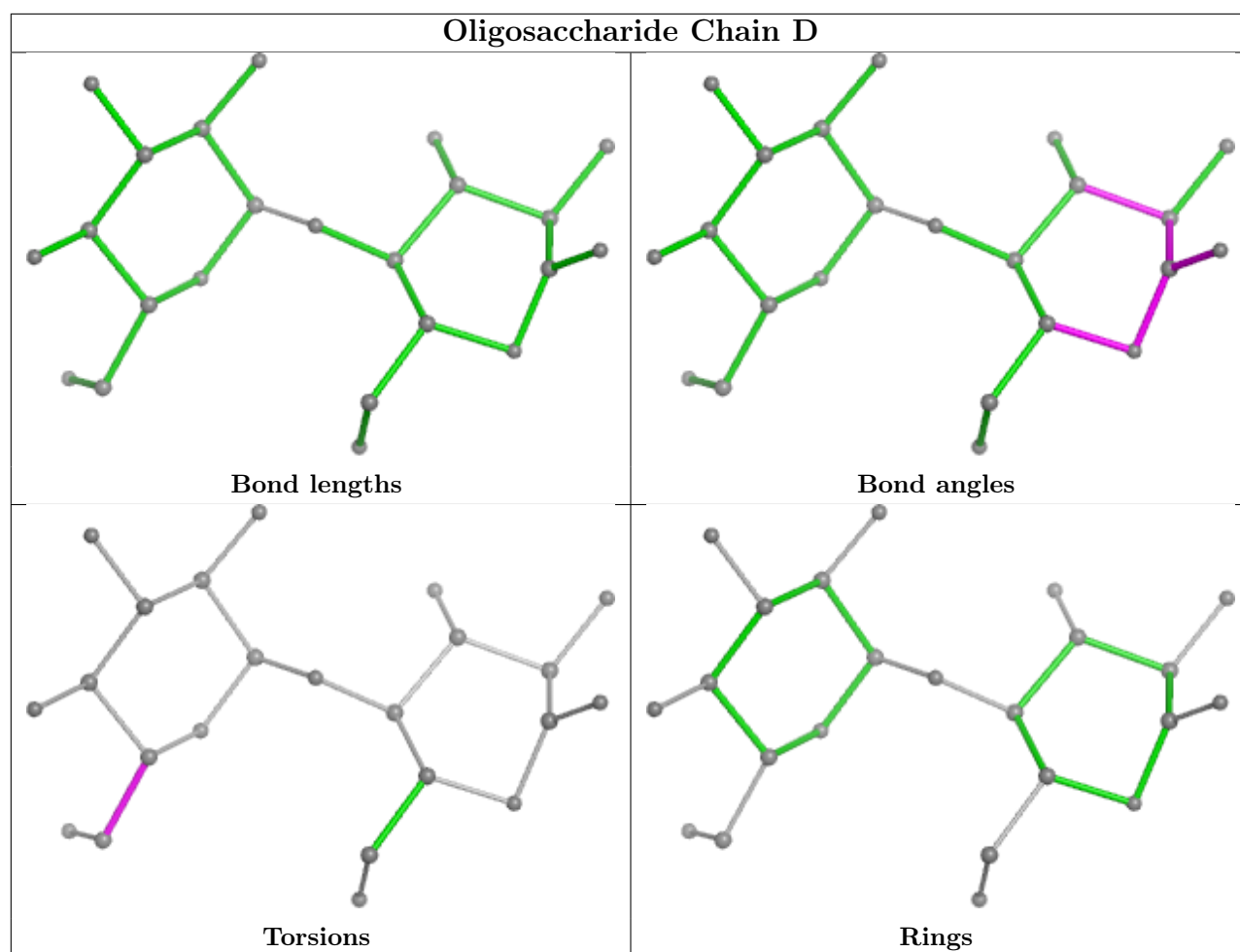
1 monomer is involved in 1 short contact:

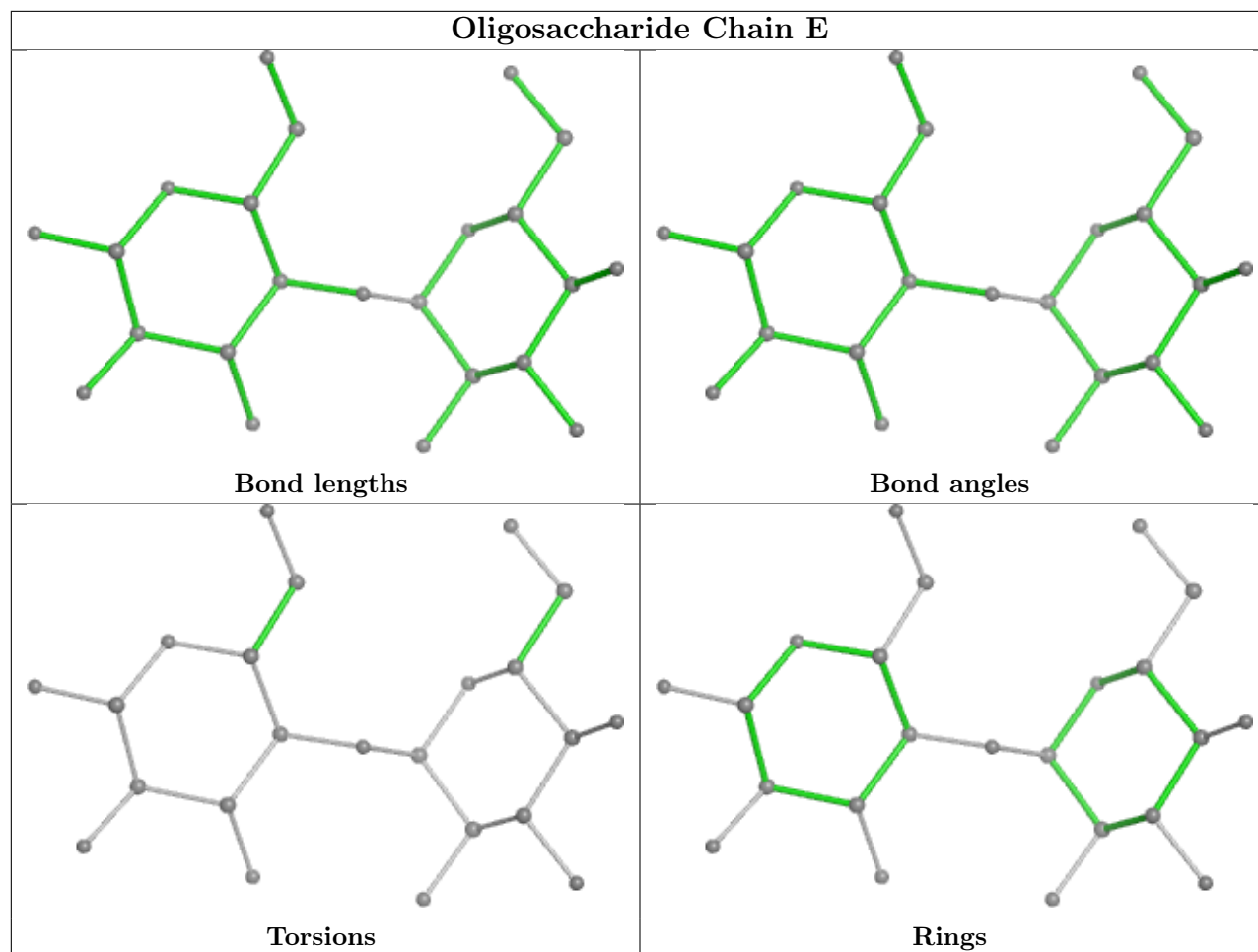
Mol	Chain	Res	Type	Clashes	Symm-Clashes
2	H	1	GLC	1	0

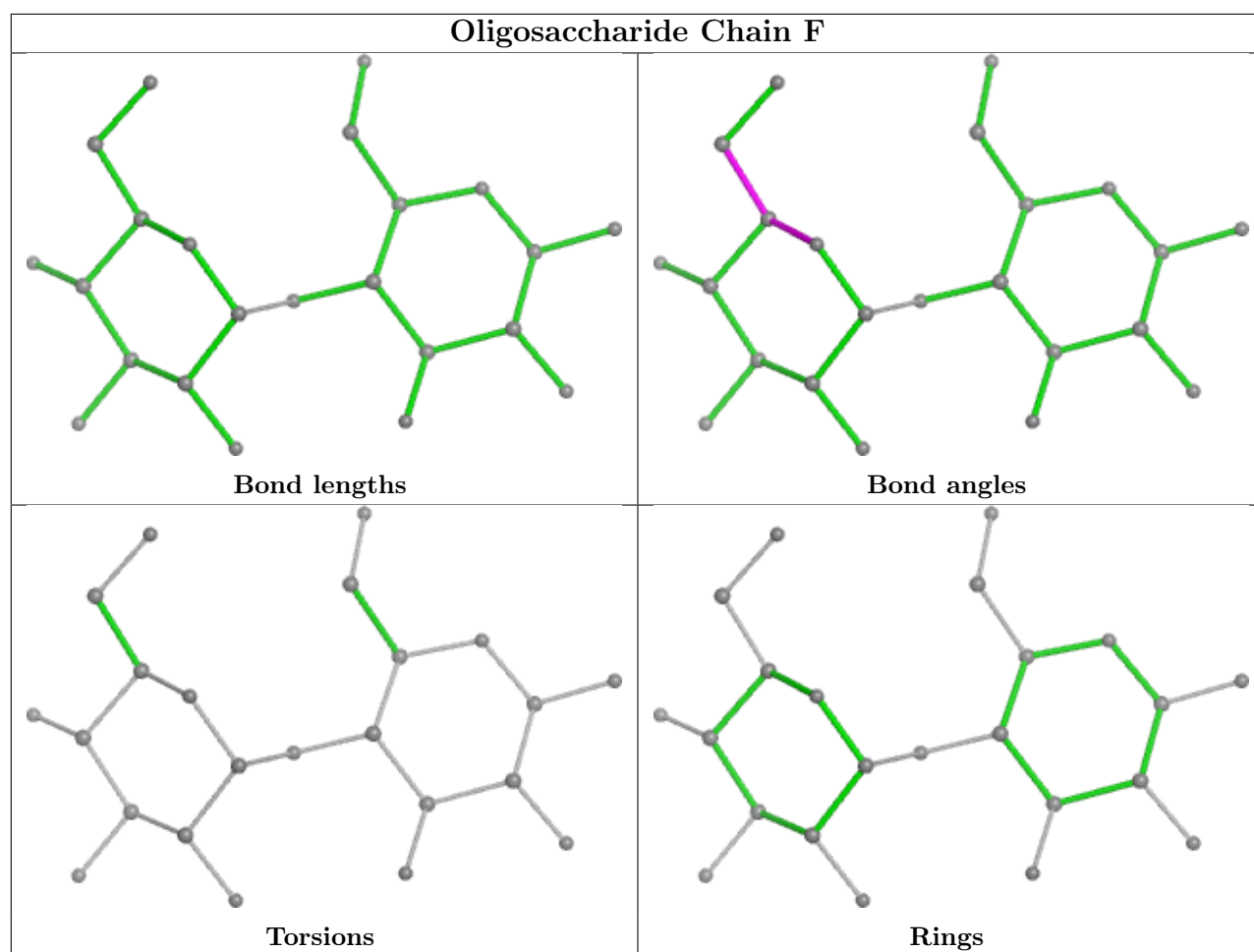
The following is a two-dimensional graphical depiction of Mogul quality analysis of bond lengths, bond angles, torsion angles, and ring geometry for oligosaccharide.



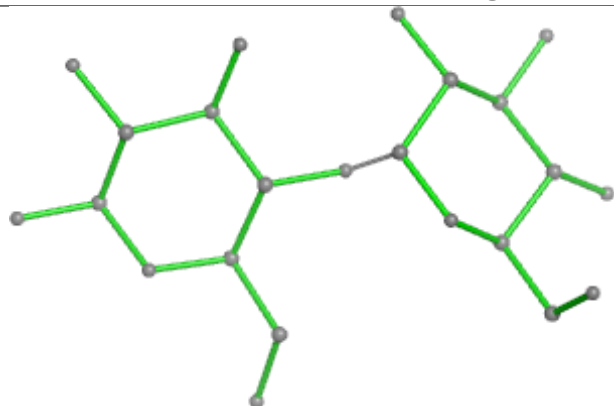




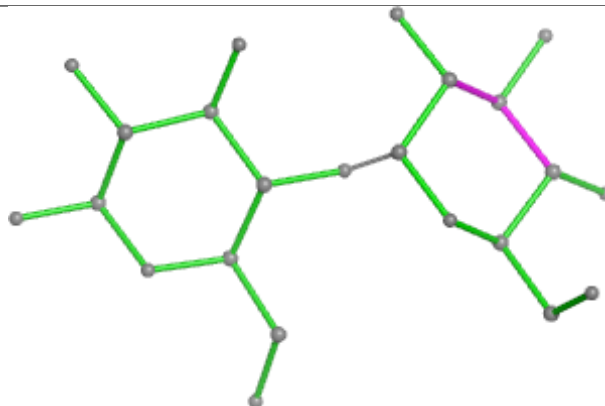




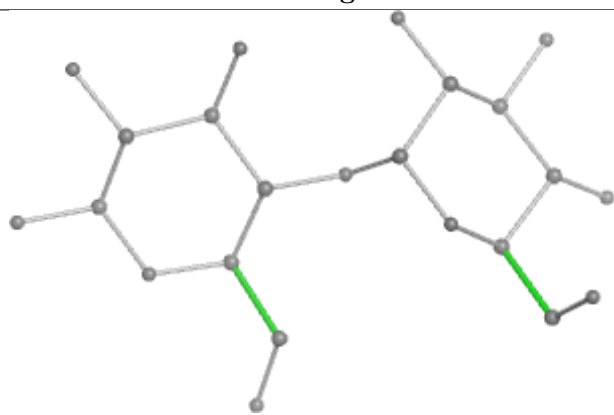
Oligosaccharide Chain G



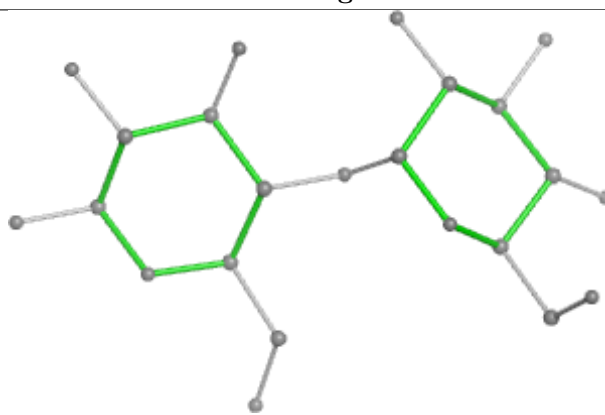
Bond lengths



Bond angles

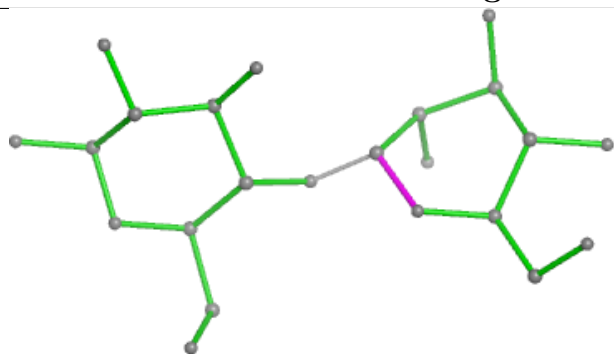


Torsions

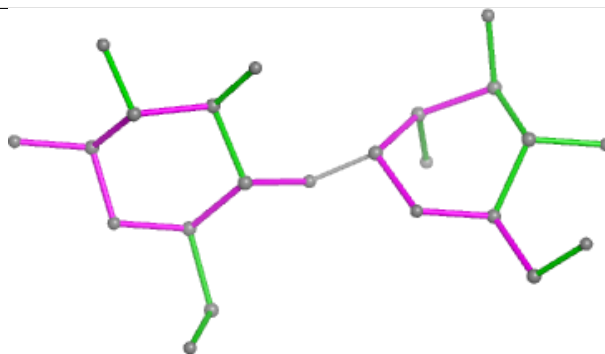


Rings

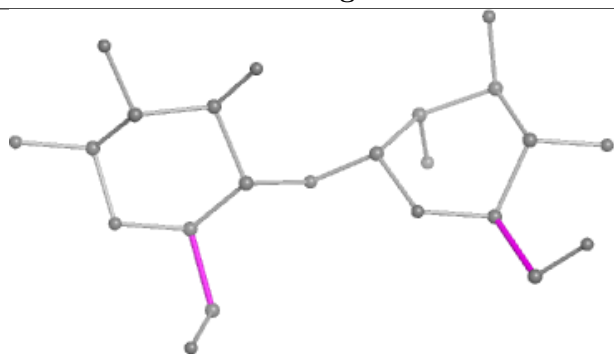
Oligosaccharide Chain H



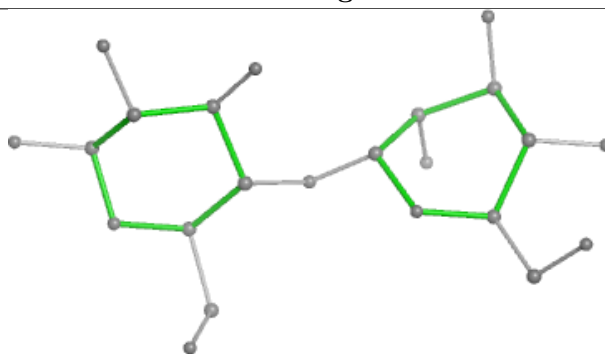
Bond lengths



Bond angles



Torsions



Rings

5.6 Ligand geometry

Of 4 ligands modelled in this entry, 2 are monoatomic - leaving 2 for Mogul analysis.

In the following table, the Counts columns list the number of bonds (or angles) for which Mogul statistics could be retrieved, the number of bonds (or angles) that are observed in the model and the number of bonds (or angles) that are defined in the Chemical Component Dictionary. The Link column lists molecule types, if any, to which the group is linked. The Z score for a bond length (or angle) is the number of standard deviations the observed value is removed from the expected value. A bond length (or angle) with $|Z| > 2$ is considered an outlier worth inspection. RMSZ is the root-mean-square of all Z scores of the bond lengths (or angles).

Mol	Type	Chain	Res	Link	Bond lengths			Bond angles		
					Counts	RMSZ	# Z > 2	Counts	RMSZ	# Z > 2
3	BME	A	1610	-	3,3,3	0.26	0	1,2,2	0.17	0
4	TRS	A	1611	-	7,7,7	0.30	0	9,9,9	0.78	0

In the following table, the Chirals column lists the number of chiral outliers, the number of chiral centers analysed, the number of these observed in the model and the number defined in the Chemical Component Dictionary. Similar counts are reported in the Torsion and Rings columns. '-' means no outliers of that kind were identified.

Mol	Type	Chain	Res	Link	Chirals	Torsions	Rings
3	BME	A	1610	-	-	0/1/1/1	-
4	TRS	A	1611	-	-	3/9/9/9	-

There are no bond length outliers.

There are no bond angle outliers.

There are no chirality outliers.

All (3) torsion outliers are listed below:

Mol	Chain	Res	Type	Atoms
4	A	1611	TRS	N-C-C3-O3
4	A	1611	TRS	C1-C-C3-O3
4	A	1611	TRS	C2-C-C3-O3

There are no ring outliers.

1 monomer is involved in 4 short contacts:

Mol	Chain	Res	Type	Clashes	Symm-Clashes
4	A	1611	TRS	4	0

5.7 Other polymers [i](#)

There are no such residues in this entry.

5.8 Polymer linkage issues [i](#)

There are no chain breaks in this entry.

6 Fit of model and data [i](#)

6.1 Protein, DNA and RNA chains [i](#)

In the following table, the column labelled ‘#RSRZ > 2’ contains the number (and percentage) of RSRZ outliers, followed by percent RSRZ outliers for the chain as percentile scores relative to all X-ray entries and entries of similar resolution. The OWAB column contains the minimum, median, 95th percentile and maximum values of the occupancy-weighted average B-factor per residue. The column labelled ‘Q < 0.9’ lists the number of (and percentage) of residues with an average occupancy less than 0.9.

Mol	Chain	Analysed	<RSRZ>	#RSRZ > 2		OWAB(Å ²)	Q < 0.9
1	A	581/602 (96%)	-0.37	18 (3%)	51 50	2, 8, 15, 24	80 (13%)

The worst 5 of 18 RSRZ outliers are listed below:

Mol	Chain	Res	Type	RSRZ
1	A	22[A]	ARG	5.3
1	A	475	PHE	5.1
1	A	14	SER	3.9
1	A	480	GLY	3.6
1	A	477	GLY	3.5

6.2 Non-standard residues in protein, DNA, RNA chains [i](#)

There are no non-standard protein/DNA/RNA residues in this entry.

6.3 Carbohydrates [i](#)

In the following table, the Atoms column lists the number of modelled atoms in the group and the number defined in the chemical component dictionary. The B-factors column lists the minimum, median, 95th percentile and maximum values of B factors of atoms in the group. The column labelled ‘Q < 0.9’ lists the number of atoms with occupancy less than 0.9.

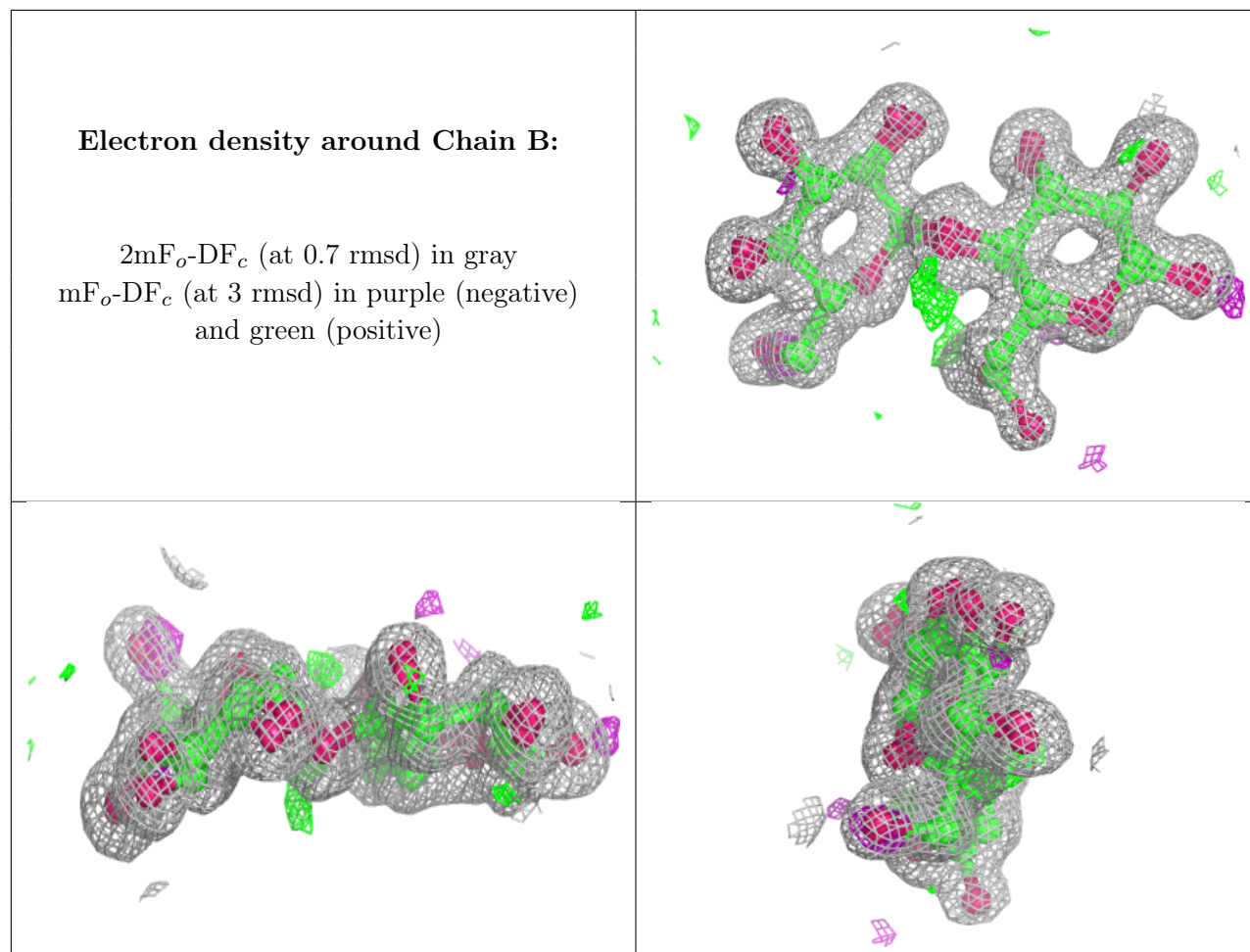
Mol	Type	Chain	Res	Atoms	RSCC	RSR	B-factors(Å ²)	Q < 0.9
2	GLC	H	2	11/12	0.47	0.17	39,42,43,44	2
2	GLC	H	1	12/12	0.75	0.14	22,31,33,34	1
2	GLC	G	2	11/12	0.87	0.11	16,18,22,24	7
2	GLC	E	2	11/12	0.90	0.09	15,17,20,24	0
2	GLC	G	1	12/12	0.91	0.09	16,18,22,23	1
2	GLC	F	2	11/12	0.91	0.10	16,17,18,20	1
2	GLC	C	1	12/12	0.93	0.07	11,12,14,16	3

Continued on next page...

Continued from previous page...

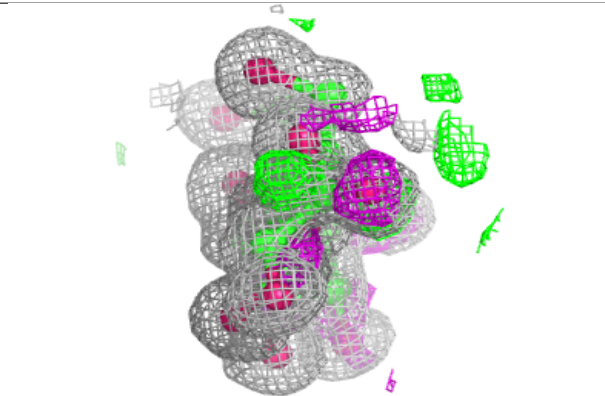
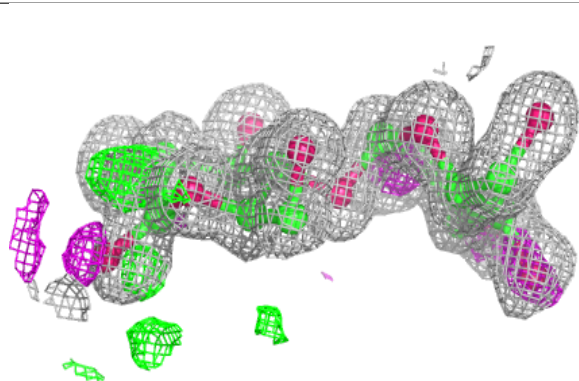
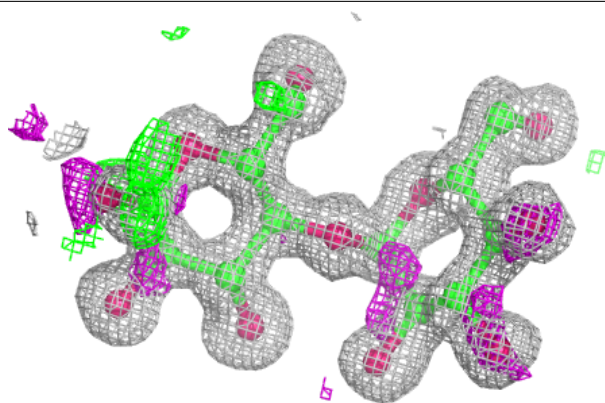
Mol	Type	Chain	Res	Atoms	RSCC	RSR	B-factors(\AA^2)	Q<0.9
2	GLC	E	1	12/12	0.93	0.08	12,15,19,21	1
2	GLC	B	2[B]	11/12	0.94	0.07	16,17,18,19	11
2	GLC	B	2[A]	11/12	0.94	0.07	15,16,17,19	11
2	GLC	F	1	12/12	0.94	0.07	15,17,18,19	2
2	GLC	D	1	12/12	0.94	0.07	7,10,13,13	1
2	GLC	C	2	11/12	0.95	0.07	13,17,20,20	0
2	GLC	B	1[B]	12/12	0.96	0.06	12,13,14,14	12
2	GLC	B	1[A]	12/12	0.96	0.06	10,12,14,15	12
2	GLC	D	2	11/12	0.98	0.04	7,8,9,9	0

The following is a graphical depiction of the model fit to experimental electron density for oligosaccharide. Each fit is shown from different orientation to approximate a three-dimensional view.

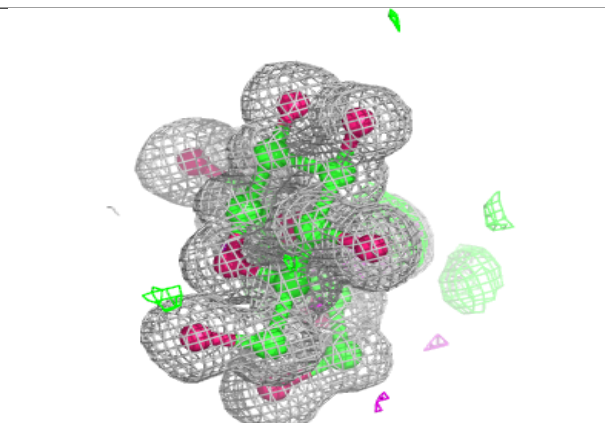
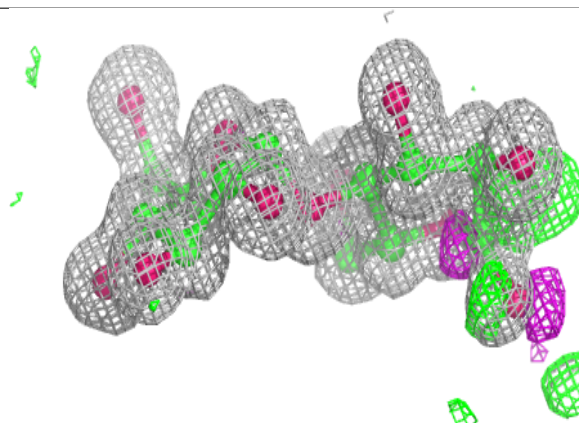
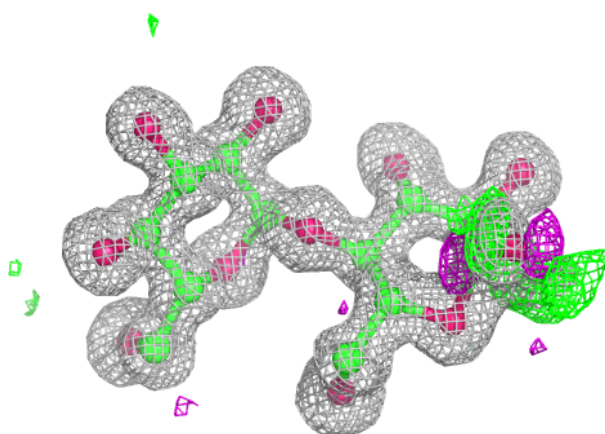


Electron density around Chain C:

$2mF_o-DF_c$ (at 0.7 rmsd) in gray
 mF_o-DF_c (at 3 rmsd) in purple (negative)
and green (positive)

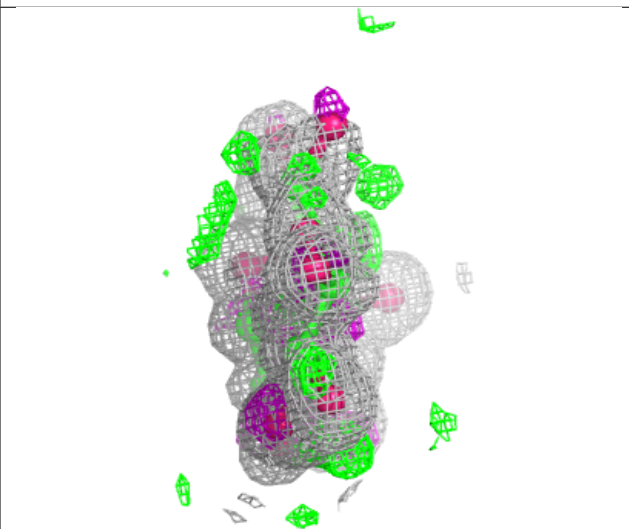
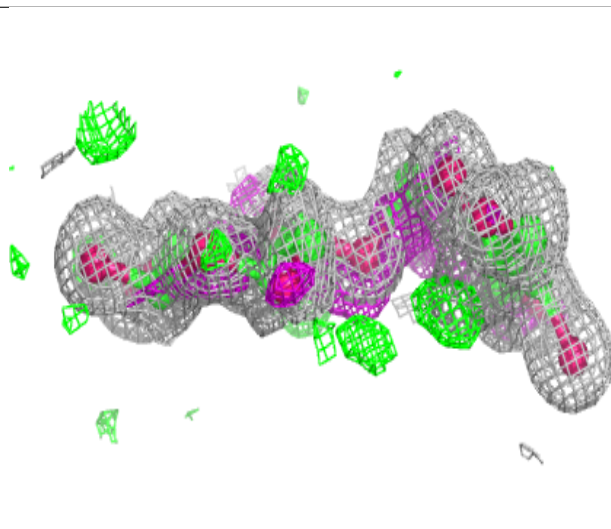
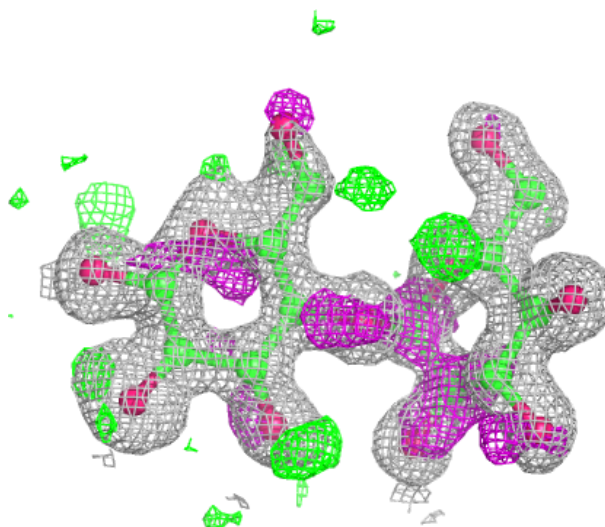
**Electron density around Chain D:**

$2mF_o-DF_c$ (at 0.7 rmsd) in gray
 mF_o-DF_c (at 3 rmsd) in purple (negative)
and green (positive)



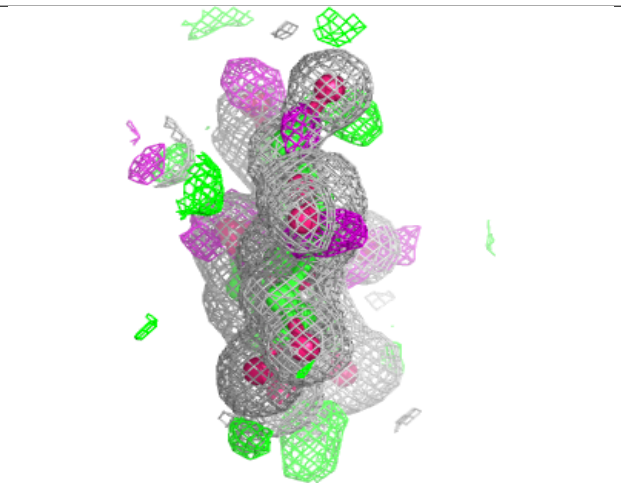
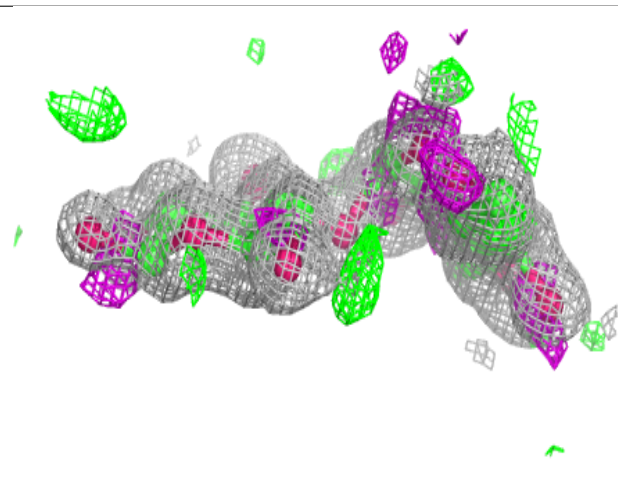
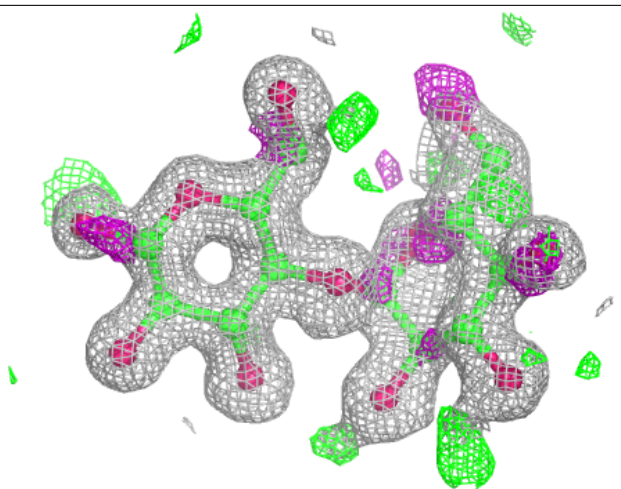
Electron density around Chain E:

$2mF_o-DF_c$ (at 0.7 rmsd) in gray
 mF_o-DF_c (at 3 rmsd) in purple (negative)
and green (positive)



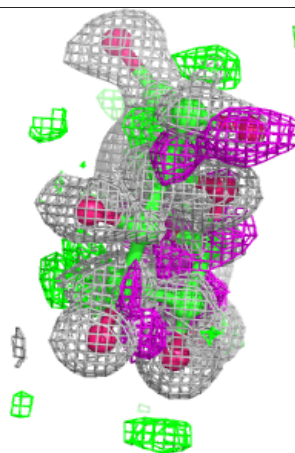
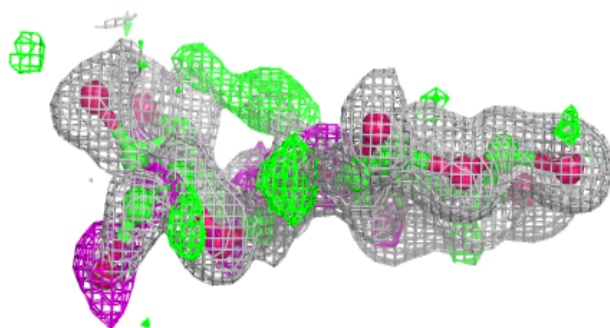
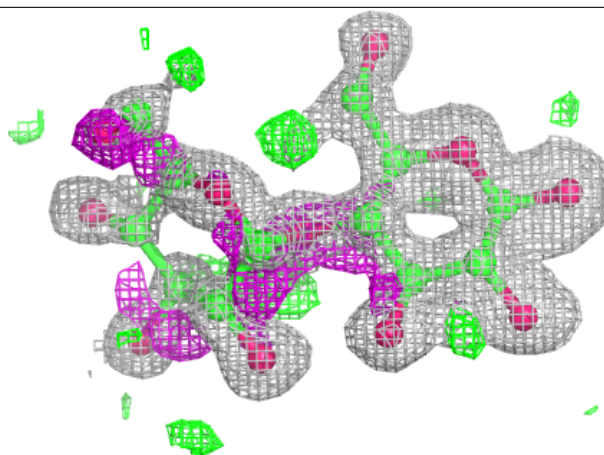
Electron density around Chain F:

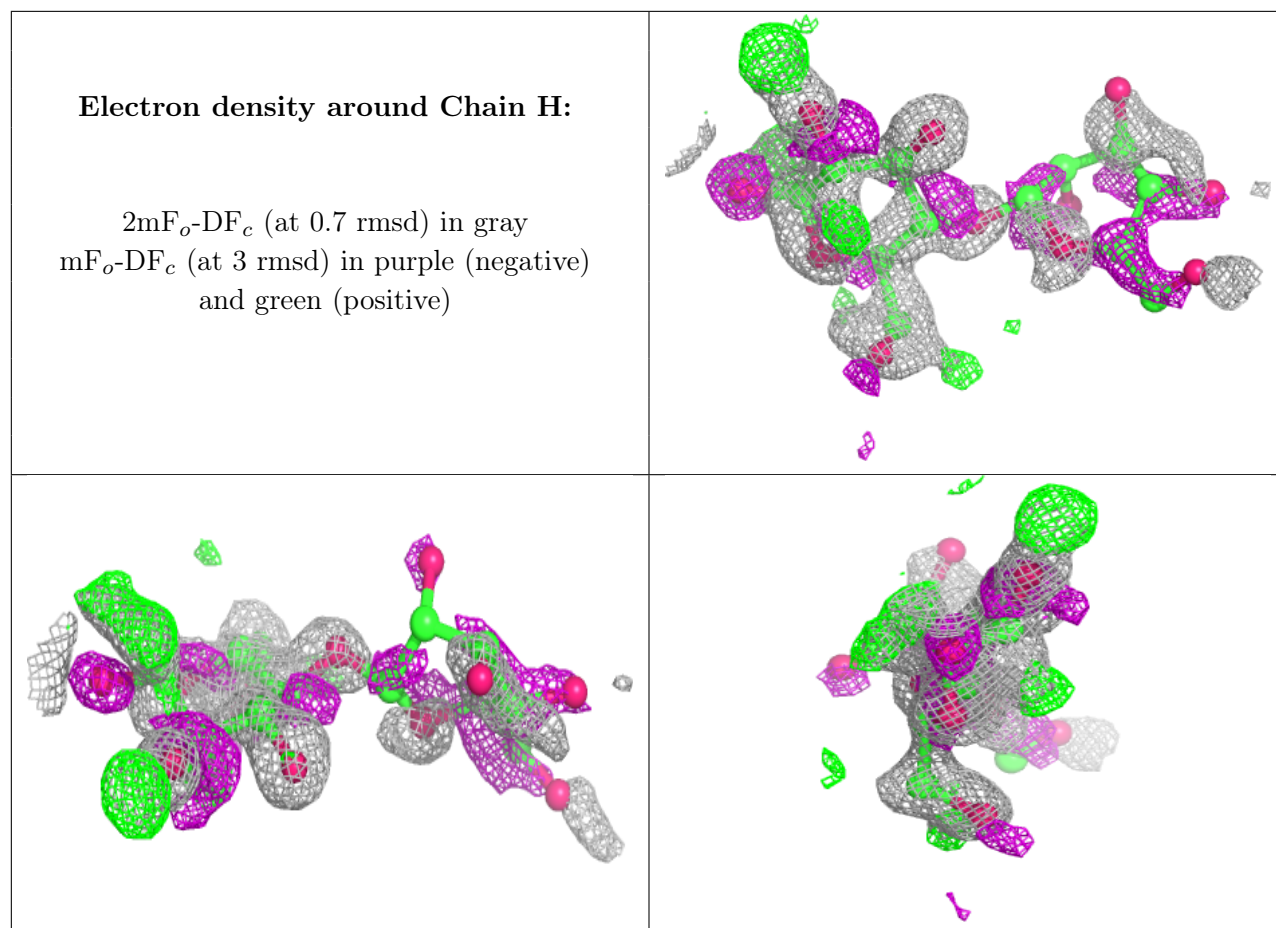
$2mF_o-DF_c$ (at 0.7 rmsd) in gray
 mF_o-DF_c (at 3 rmsd) in purple (negative)
and green (positive)



Electron density around Chain G:

$2mF_o-DF_c$ (at 0.7 rmsd) in gray
 mF_o-DF_c (at 3 rmsd) in purple (negative)
and green (positive)





6.4 Ligands [i](#)

In the following table, the Atoms column lists the number of modelled atoms in the group and the number defined in the chemical component dictionary. The B-factors column lists the minimum, median, 95th percentile and maximum values of B factors of atoms in the group. The column labelled 'Q< 0.9' lists the number of atoms with occupancy less than 0.9.

Mol	Type	Chain	Res	Atoms	RSCC	RSR	B-factors(\AA^2)	Q<0.9
4	TRS	A	1611	8/8	0.70	0.17	18,20,21,22	7
3	BME	A	1610	4/4	0.98	0.08	9,9,9,9	0
5	MG	A	1613	1/1	0.99	0.13	13,13,13,13	1
5	MG	A	1612	1/1	1.00	0.04	10,10,10,10	0

6.5 Other polymers [i](#)

There are no such residues in this entry.