



Full wwPDB X-ray Structure Validation Report ⓘ

Jun 18, 2024 – 02:58 PM EDT

PDB ID : 4B85
Title : Mus musculus Acetylcholinesterase in complex with 4-Chloranyl-N-(2-diethylamino-ethyl)-benzenesulfonamide
Authors : Andersson, C.D.; Forsgren, N.; Akfur, C.; Allgardsson, A.; Berg, L.; Qian, W.; Ekstrom, F.; Linusson, A.
Deposited on : 2012-08-24
Resolution : 2.10 Å(reported)

This is a Full wwPDB X-ray Structure Validation Report for a publicly released PDB entry.

We welcome your comments at validation@mail.wwpdb.org

A user guide is available at

<https://www.wwpdb.org/validation/2017/XrayValidationReportHelp>

with specific help available everywhere you see the ⓘ symbol.

The types of validation reports are described at

<http://www.wwpdb.org/validation/2017/FAQs#types>.

The following versions of software and data (see [references ⓘ](#)) were used in the production of this report:

MolProbity	:	4.02b-467
Mogul	:	2022.3.0, CSD as543be (2022)
Xtriage (Phenix)	:	1.20.1
EDS	:	2.37.1
buster-report	:	1.1.7 (2018)
Percentile statistics	:	20191225.v01 (using entries in the PDB archive December 25th 2019)
Refmac	:	5.8.0158
CCP4	:	7.0.044 (Gargrove)
Ideal geometry (proteins)	:	Engh & Huber (2001)
Ideal geometry (DNA, RNA)	:	Parkinson et al. (1996)
Validation Pipeline (wwPDB-VP)	:	2.37.1

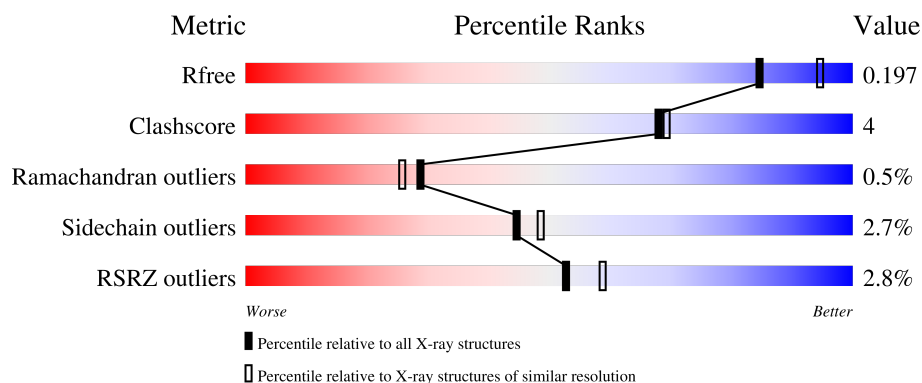
1 Overall quality at a glance

The following experimental techniques were used to determine the structure:

X-RAY DIFFRACTION

The reported resolution of this entry is 2.10 Å.

Percentile scores (ranging between 0-100) for global validation metrics of the entry are shown in the following graphic. The table shows the number of entries on which the scores are based.



Metric	Whole archive (#Entries)	Similar resolution (#Entries, resolution range(Å))
R_{free}	130704	5197 (2.10-2.10)
Clashscore	141614	5710 (2.10-2.10)
Ramachandran outliers	138981	5647 (2.10-2.10)
Sidechain outliers	138945	5648 (2.10-2.10)
RSRZ outliers	127900	5083 (2.10-2.10)

The table below summarises the geometric issues observed across the polymeric chains and their fit to the electron density. The red, orange, yellow and green segments of the lower bar indicate the fraction of residues that contain outliers for ≥ 3 , 2, 1 and 0 types of geometric quality criteria respectively. A grey segment represents the fraction of residues that are not modelled. The numeric value for each fraction is indicated below the corresponding segment, with a dot representing fractions $\leq 5\%$. The upper red bar (where present) indicates the fraction of residues that have poor fit to the electron density. The numeric value is given above the bar.

Mol	Chain	Length	Quality of chain
1	A	548	<div> <div>3%</div> <div>86%</div> <div>11%</div> <div>..</div> </div>
1	B	548	<div> <div>3%</div> <div>88%</div> <div>8%</div> <div>..</div> </div>

The following table lists non-polymeric compounds, carbohydrate monomers and non-standard residues in protein, DNA, RNA chains that are outliers for geometric or electron-density-fit criteria:

Mol	Type	Chain	Res	Chirality	Geometry	Clashes	Electron density
5	NAG	A	1546	X	-	-	-
5	NAG	B	1547	-	-	-	X

2 Entry composition

There are 7 unique types of molecules in this entry. The entry contains 9251 atoms, of which 0 are hydrogens and 0 are deuteriums.

In the tables below, the ZeroOcc column contains the number of atoms modelled with zero occupancy, the AltConf column contains the number of residues with at least one atom in alternate conformation and the Trace column contains the number of residues modelled with at most 2 atoms.

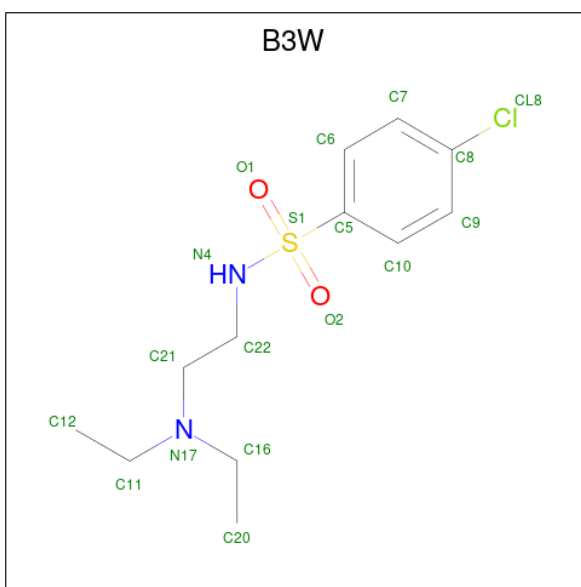
- Molecule 1 is a protein called ACETYLCHOLINESTERASE.

Mol	Chain	Residues	Atoms					ZeroOcc	AltConf	Trace
1	A	536	Total	C	N	O	S	0	13	0
			4265	2742	745	762	16			
1	B	533	Total	C	N	O	S	0	4	0
			4168	2681	715	757	15			

There are 10 discrepancies between the modelled and reference sequences:

Chain	Residue	Modelled	Actual	Comment	Reference
A	544	ALA	-	expression tag	UNP P21836
A	545	THR	-	expression tag	UNP P21836
A	546	GLU	-	expression tag	UNP P21836
A	547	ALA	-	expression tag	UNP P21836
A	548	PRO	-	expression tag	UNP P21836
B	544	ALA	-	expression tag	UNP P21836
B	545	THR	-	expression tag	UNP P21836
B	546	GLU	-	expression tag	UNP P21836
B	547	ALA	-	expression tag	UNP P21836
B	548	PRO	-	expression tag	UNP P21836

- Molecule 2 is 4-chloranyl-N-[2-(diethylamino)ethyl]benzenesulfonamide (three-letter code: B3W) (formula: C₁₂H₁₉ClN₂O₂S).



Mol	Chain	Residues	Atoms						ZeroOcc	AltConf
2	A	1	Total	C	Cl	N	O	S	0	1
			36	24	2	4	4	2		
2	B	1	Total	C	Cl	N	O	S	0	0
			18	12	1	2	2	1		

- Molecule 3 is SULFATE ION (three-letter code: SO4) (formula: O₄S).



Mol	Chain	Residues	Atoms			ZeroOcc	AltConf
3	A	1	Total	O	S	0	0
			5	4	1		
3	B	1	Total	O	S	0	0
			5	4	1		

- Molecule 4 is DI(HYDROXYETHYL)ETHER (three-letter code: PEG) (formula: $C_4H_{10}O_3$).



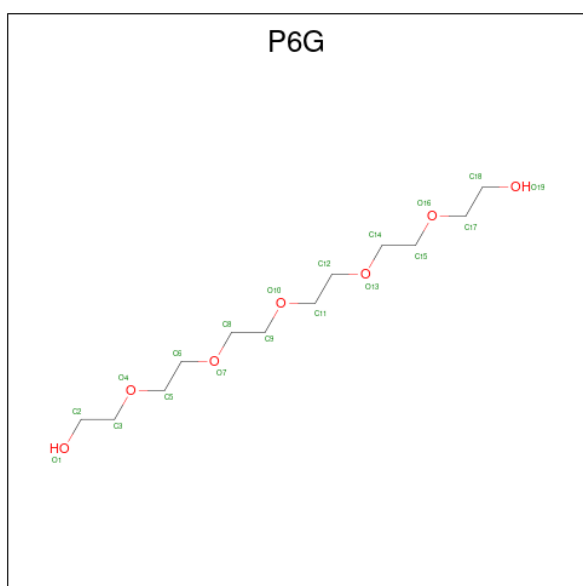
Mol	Chain	Residues	Atoms			ZeroOcc	AltConf
4	A	1	Total	C	O	0	0
			7	4	3		
4	A	1	Total	C	O	0	0
			7	4	3		
4	A	1	Total	C	O	0	0
			4	2	2		
4	A	1	Total	C	O	0	0
			4	2	2		
4	B	1	Total	C	O	0	0
			7	4	3		
4	B	1	Total	C	O	0	0
			4	2	2		
4	B	1	Total	C	O	0	0
			7	4	3		
4	B	1	Total	C	O	0	0
			7	4	3		

- Molecule 5 is 2-acetamido-2-deoxy-beta-D-glucopyranose (three-letter code: NAG) (formula: $C_8H_{15}NO_6$).



Mol	Chain	Residues	Atoms				ZeroOcc	AltConf
5	A	1	Total	C	N	O	0	0
			14	8	1	5		
5	B	1	Total	C	N	O	0	0
			14	8	1	5		

- Molecule 6 is HEXAETHYLENE GLYCOL (three-letter code: P6G) (formula: $C_{12}H_{26}O_7$).



Mol	Chain	Residues	Atoms			ZeroOcc	AltConf
6	B	1	Total	C	O	0	0
			16	10	6		

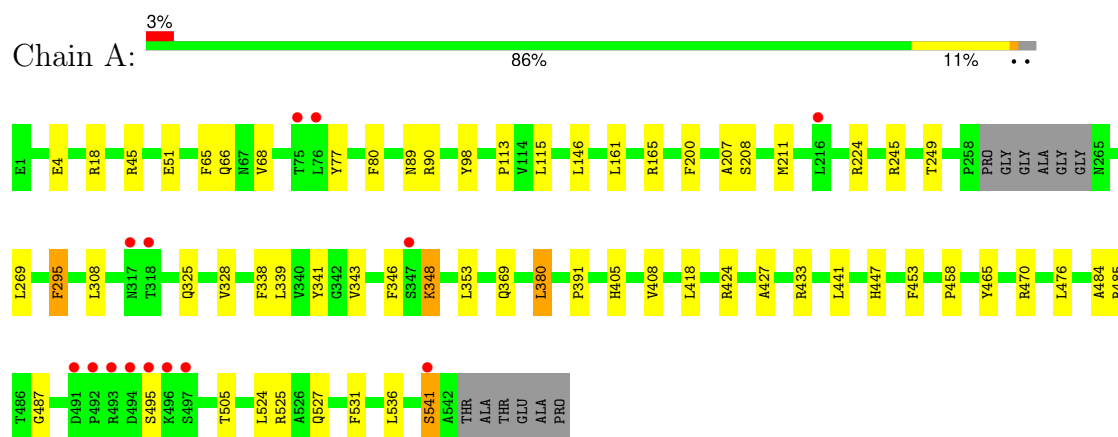
- Molecule 7 is water.

Mol	Chain	Residues	Atoms		ZeroOcc	AltConf
7	A	380	Total 380	O 380	0	0
7	B	283	Total 283	O 283	0	0

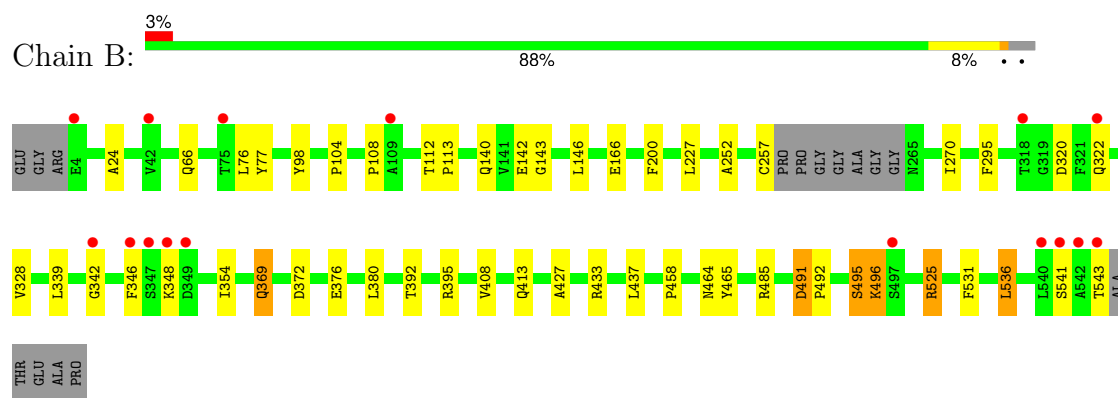
3 Residue-property plots

These plots are drawn for all protein, RNA, DNA and oligosaccharide chains in the entry. The first graphic for a chain summarises the proportions of the various outlier classes displayed in the second graphic. The second graphic shows the sequence view annotated by issues in geometry and electron density. Residues are color-coded according to the number of geometric quality criteria for which they contain at least one outlier: green = 0, yellow = 1, orange = 2 and red = 3 or more. A red dot above a residue indicates a poor fit to the electron density ($RSRZ > 2$). Stretches of 2 or more consecutive residues without any outlier are shown as a green connector. Residues present in the sample, but not in the model, are shown in grey.

• Molecule 1: ACETYLCHOLINESTERASE



• Molecule 1: ACETYLCHOLINESTERASE



4 Data and refinement statistics

Property	Value	Source
Space group	P 21 21 21	Depositor
Cell constants a, b, c, α , β , γ	79.53Å 112.89Å 226.50Å 90.00° 90.00° 90.00°	Depositor
Resolution (Å)	29.19 – 2.10 29.19 – 2.10	Depositor EDS
% Data completeness (in resolution range)	99.8 (29.19-2.10) 99.8 (29.19-2.10)	Depositor EDS
R_{merge}	0.05	Depositor
R_{sym}	(Not available)	Depositor
$\langle I/\sigma(I) \rangle$ ¹	4.10 (at 2.10Å)	Xtriage
Refinement program	PHENIX (PHENIX.REFINE: 1.7.3_928)	Depositor
R, R_{free}	0.177 , 0.206 0.170 , 0.197	Depositor DCC
R_{free} test set	2414 reflections (2.02%)	wwPDB-VP
Wilson B-factor (Å ²)	37.3	Xtriage
Anisotropy	0.121	Xtriage
Bulk solvent k_{sol} (e/Å ³), B_{sol} (Å ²)	0.33 , 55.2	EDS
L-test for twinning ²	$\langle L \rangle = 0.49$, $\langle L^2 \rangle = 0.32$	Xtriage
Estimated twinning fraction	No twinning to report.	Xtriage
F_o, F_c correlation	0.97	EDS
Total number of atoms	9251	wwPDB-VP
Average B, all atoms (Å ²)	43.0	wwPDB-VP

Xtriage's analysis on translational NCS is as follows: *The largest off-origin peak in the Patterson function is 2.91% of the height of the origin peak. No significant pseudotranslation is detected.*

¹Intensities estimated from amplitudes.

²Theoretical values of $\langle |L| \rangle$, $\langle L^2 \rangle$ for acentric reflections are 0.5, 0.333 respectively for untwinned datasets, and 0.375, 0.2 for perfectly twinned datasets.

5 Model quality

5.1 Standard geometry

Bond lengths and bond angles in the following residue types are not validated in this section: B3W, SO4, P6G, PEG, NAG

The Z score for a bond length (or angle) is the number of standard deviations the observed value is removed from the expected value. A bond length (or angle) with $|Z| > 5$ is considered an outlier worth inspection. RMSZ is the root-mean-square of all Z scores of the bond lengths (or angles).

Mol	Chain	Bond lengths		Bond angles	
		RMSZ	# Z >5	RMSZ	# Z >5
1	A	0.40	0/4429	0.55	0/6044
1	B	0.36	0/4303	0.54	0/5884
All	All	0.38	0/8732	0.54	0/11928

There are no bond length outliers.

There are no bond angle outliers.

There are no chirality outliers.

There are no planarity outliers.

5.2 Too-close contacts

In the following table, the Non-H and H(model) columns list the number of non-hydrogen atoms and hydrogen atoms in the chain respectively. The H(added) column lists the number of hydrogen atoms added and optimized by MolProbity. The Clashes column lists the number of clashes within the asymmetric unit, whereas Symm-Clashes lists symmetry-related clashes.

Mol	Chain	Non-H	H(model)	H(added)	Clashes	Symm-Clashes
1	A	4265	0	4200	34	0
1	B	4168	0	4061	30	0
2	A	36	0	38	3	0
2	B	18	0	19	0	0
3	A	5	0	0	0	0
3	B	5	0	0	0	0
4	A	22	0	30	0	0
4	B	25	0	35	2	0
5	A	14	0	13	0	0
5	B	14	0	13	0	0
6	B	16	0	21	4	0

Continued on next page...

Continued from previous page...

Mol	Chain	Non-H	H(model)	H(added)	Clashes	Symm-Clashes
7	A	380	0	0	2	0
7	B	283	0	0	3	0
All	All	9251	0	8430	64	0

The all-atom clashscore is defined as the number of clashes found per 1000 atoms (including hydrogen atoms). The all-atom clashscore for this structure is 4.

All (64) close contacts within the same asymmetric unit are listed below, sorted by their clash magnitude.

Atom-1	Atom-2	Interatomic distance (Å)	Clash overlap (Å)
1:B:485:ARG:HD3	4:B:1546:PEG:H11	1.64	0.79
1:A:113:PRO:HG2	1:A:485:ARG:HG2	1.73	0.70
1:B:113:PRO:HG2	1:B:485:ARG:HG2	1.74	0.70
1:A:531:PHE:HB2	6:B:1550:P6G:H112	1.72	0.69
1:A:65:PHE:HB2	1:A:90[B]:ARG:HD2	1.75	0.67
1:A:353:LEU:HB3	1:A:391:PRO:HB2	1.76	0.67
1:B:495:SER:OG	1:B:496:LYS:N	2.25	0.67
1:A:245:ARG:O	1:A:249:THR:HG23	1.94	0.66
1:A:45[A]:ARG:NH2	1:A:51:GLU:OE1	2.30	0.63
1:A:18:ARG:NH2	7:A:2024:HOH:O	2.33	0.61
1:A:161:LEU:HD11	1:A:269:LEU:HD22	1.83	0.60
1:A:433[A]:ARG:NH1	7:A:2337:HOH:O	2.20	0.60
1:B:531:PHE:HD1	6:B:1550:P6G:H32	1.71	0.56
1:A:4:GLU:OE1	1:A:18:ARG:HD3	2.07	0.54
1:B:376:GLU:O	1:B:380:LEU:HG	2.07	0.54
1:A:77:TYR:CE2	1:A:348:LYS:HG2	2.44	0.53
1:A:207:ALA:O	1:A:211[B]:MET:HG2	2.09	0.52
1:A:224:ARG:HG2	1:A:325:GLN:HB2	1.91	0.52
1:A:369:GLN:HE22	1:A:405:HIS:CE1	2.29	0.51
1:A:295:PHE:N	2:A:600[B]:B3W:CL8	2.82	0.50
1:B:339:LEU:HD13	1:B:346:PHE:CE2	2.47	0.49
1:A:115:LEU:HD21	1:A:484:ALA:HB2	1.96	0.48
1:A:80:PHE:CE1	1:A:348:LYS:HE2	2.50	0.47
1:A:68:VAL:HG23	1:A:90[B]:ARG:HB2	1.96	0.47
1:B:142:GLU:O	4:B:1546:PEG:H22	2.15	0.47
1:A:338[B]:PHE:HZ	1:A:447:HIS:CD2	2.33	0.47
1:A:380:LEU:HB3	6:B:1550:P6G:O1	2.15	0.46
1:A:408:VAL:HG11	1:A:525:ARG:HG3	1.98	0.46
1:B:66:GLN:HG3	1:B:98:TYR:CD2	2.51	0.46
1:A:208:SER:HA	1:A:211[B]:MET:HG3	1.97	0.45
1:A:341:TYR:CD2	2:A:600[A]:B3W:H9	2.52	0.45

Continued on next page...

Continued from previous page...

Atom-1	Atom-2	Interatomic distance (Å)	Clash overlap (Å)
1:B:464:ASN:ND2	7:B:2232:HOH:O	2.38	0.45
1:A:338[B]:PHE:HB3	2:A:600[B]:B3W:CL8	2.54	0.45
1:B:433:ARG:CZ	1:B:437:LEU:HD23	2.47	0.45
1:B:320:ASP:OD1	1:B:322:GLN:HG3	2.17	0.45
1:B:408:VAL:HG11	1:B:525:ARG:HG3	1.98	0.45
1:B:339:LEU:HB3	1:B:346:PHE:CG	2.52	0.44
1:A:66:GLN:HG3	1:A:98:TYR:CD2	2.52	0.44
1:B:458:PRO:HA	1:B:465:TYR:CD1	2.53	0.44
1:B:491:ASP:HA	1:B:492:PRO:HD3	1.83	0.44
1:A:89:ASN:O	1:A:90[A]:ARG:NH1	2.51	0.43
1:A:211[B]:MET:HE2	1:A:308:LEU:HD21	1.99	0.43
1:A:527:GLN:HE21	6:B:1550:P6G:H141	1.84	0.43
1:B:24:ALA:HB3	1:B:140:GLN:HG3	2.01	0.43
1:B:166:GLU:HG2	1:B:270:ILE:HD13	1.99	0.42
1:A:339:LEU:HD13	1:A:346:PHE:CE2	2.54	0.42
1:A:541:SER:O	1:A:541:SER:OG	2.37	0.42
1:A:458:PRO:HA	1:A:465:TYR:CD1	2.54	0.42
1:A:328:VAL:O	1:A:427:ALA:HA	2.18	0.42
1:B:372:ASP:O	1:B:376:GLU:HG3	2.20	0.42
1:B:369:GLN:HG3	7:B:2183:HOH:O	2.19	0.42
1:B:76:LEU:HG	1:B:77:TYR:CD2	2.55	0.42
1:B:346:PHE:HE2	1:B:395:ARG:HG2	1.85	0.42
1:A:453:PHE:HB3	1:A:476:LEU:HD12	2.01	0.41
1:B:104:PRO:HG2	1:B:108:PRO:HD3	2.02	0.41
1:B:227:LEU:HB2	1:B:328[A]:VAL:HG12	2.03	0.41
1:B:413:GLN:HG3	7:B:2212:HOH:O	2.21	0.41
1:A:325:GLN:OE1	1:A:487:GLY:HA3	2.21	0.41
1:B:346:PHE:CE1	1:B:354:ILE:HG21	2.56	0.41
1:B:77:TYR:CD2	1:B:348:LYS:HD3	2.56	0.40
1:B:112:THR:HG21	1:B:143:GLY:O	2.21	0.40
1:B:252:ALA:HB1	1:B:257:CYS:HB2	2.03	0.40
1:B:536:LEU:HD23	1:B:536:LEU:HA	1.93	0.40

There are no symmetry-related clashes.

5.3 Torsion angles ⓘ

5.3.1 Protein backbone ⓘ

In the following table, the Percentiles column shows the percent Ramachandran outliers of the chain as a percentile score with respect to all X-ray entries followed by that with respect to entries

of similar resolution.

The Analysed column shows the number of residues for which the backbone conformation was analysed, and the total number of residues.

Mol	Chain	Analysed	Favoured	Allowed	Outliers	Percentiles	
1	A	545/548 (100%)	528 (97%)	15 (3%)	2 (0%)	34	32
1	B	533/548 (97%)	513 (96%)	17 (3%)	3 (1%)	25	21
All	All	1078/1096 (98%)	1041 (97%)	32 (3%)	5 (0%)	29	26

All (5) Ramachandran outliers are listed below:

Mol	Chain	Res	Type
1	A	343	VAL
1	B	495	SER
1	A	495	SER
1	B	342	GLY
1	B	496	LYS

5.3.2 Protein sidechains ⓘ

In the following table, the Percentiles column shows the percent sidechain outliers of the chain as a percentile score with respect to all X-ray entries followed by that with respect to entries of similar resolution.

The Analysed column shows the number of residues for which the sidechain conformation was analysed, and the total number of residues.

Mol	Chain	Analysed	Rotameric	Outliers	Percentiles	
1	A	452/446 (101%)	437 (97%)	15 (3%)	38	40
1	B	440/446 (99%)	430 (98%)	10 (2%)	50	55
All	All	892/892 (100%)	867 (97%)	25 (3%)	44	47

All (25) residues with a non-rotameric sidechain are listed below:

Mol	Chain	Res	Type
1	A	146	LEU
1	A	165	ARG
1	A	200	PHE
1	A	295	PHE
1	A	348	LYS
1	A	380	LEU
1	A	418	LEU

Continued on next page...

Continued from previous page...

Mol	Chain	Res	Type
1	A	424	ARG
1	A	441	LEU
1	A	470[A]	ARG
1	A	470[B]	ARG
1	A	505	THR
1	A	524	LEU
1	A	536	LEU
1	A	541	SER
1	B	146	LEU
1	B	200	PHE
1	B	295	PHE
1	B	369	GLN
1	B	392	THR
1	B	491	ASP
1	B	525	ARG
1	B	536	LEU
1	B	541	SER
1	B	543	THR

Sometimes sidechains can be flipped to improve hydrogen bonding and reduce clashes. All (1) such sidechains are listed below:

Mol	Chain	Res	Type
1	A	421	GLN

5.3.3 RNA [i](#)

There are no RNA molecules in this entry.

5.4 Non-standard residues in protein, DNA, RNA chains [i](#)

There are no non-standard protein/DNA/RNA residues in this entry.

5.5 Carbohydrates [i](#)

There are no monosaccharides in this entry.

5.6 Ligand geometry [i](#)

16 ligands are modelled in this entry.

In the following table, the Counts columns list the number of bonds (or angles) for which Mogul statistics could be retrieved, the number of bonds (or angles) that are observed in the model and the number of bonds (or angles) that are defined in the Chemical Component Dictionary. The Link column lists molecule types, if any, to which the group is linked. The Z score for a bond length (or angle) is the number of standard deviations the observed value is removed from the expected value. A bond length (or angle) with $|Z| > 2$ is considered an outlier worth inspection. RMSZ is the root-mean-square of all Z scores of the bond lengths (or angles).

Mol	Type	Chain	Res	Link	Bond lengths			Bond angles		
					Counts	RMSZ	# Z > 2	Counts	RMSZ	# Z > 2
4	PEG	A	1548	-	3,3,6	0.54	0	2,2,5	0.90	0
4	PEG	A	1547	-	3,3,6	0.58	0	2,2,5	0.90	0
4	PEG	A	1544	-	6,6,6	0.82	0	5,5,5	0.84	0
6	P6G	B	1550	-	15,15,18	0.79	0	14,14,17	0.68	0
4	PEG	B	1548	-	6,6,6	0.73	0	5,5,5	0.91	0
5	NAG	A	1546	1	14,14,15	0.49	0	17,19,21	1.01	1 (5%)
2	B3W	A	600[A]	-	18,18,18	1.71	3 (16%)	24,24,24	1.39	5 (20%)
4	PEG	B	1549	-	6,6,6	0.64	0	5,5,5	1.01	0
2	B3W	B	600	-	18,18,18	1.80	4 (22%)	24,24,24	1.40	5 (20%)
5	NAG	B	1547	1	14,14,15	0.42	0	17,19,21	1.94	2 (11%)
3	SO4	A	1543	-	4,4,4	0.27	0	6,6,6	0.27	0
3	SO4	B	1544	-	4,4,4	0.22	0	6,6,6	0.14	0
4	PEG	B	1545	-	6,6,6	0.66	0	5,5,5	0.99	0
4	PEG	B	1546	-	3,3,6	0.60	0	2,2,5	0.84	0
4	PEG	A	1545	-	6,6,6	0.67	0	5,5,5	0.97	0
2	B3W	A	600[B]	-	18,18,18	1.72	2 (11%)	24,24,24	1.44	7 (29%)

In the following table, the Chirals column lists the number of chiral outliers, the number of chiral centers analysed, the number of these observed in the model and the number defined in the Chemical Component Dictionary. Similar counts are reported in the Torsion and Rings columns. '-' means no outliers of that kind were identified.

Mol	Type	Chain	Res	Link	Chirals	Torsions	Rings
4	PEG	A	1548	-	-	0/1/1/4	-
4	PEG	A	1547	-	-	0/1/1/4	-
4	PEG	A	1544	-	-	2/4/4/4	-
6	P6G	B	1550	-	-	6/13/13/16	-
4	PEG	B	1548	-	-	1/4/4/4	-
2	B3W	A	600[A]	-	-	5/17/17/17	0/1/1/1
4	PEG	B	1549	-	-	2/4/4/4	-
2	B3W	B	600	-	-	12/17/17/17	0/1/1/1
5	NAG	B	1547	1	-	4/6/23/26	0/1/1/1

Continued on next page...

Continued from previous page...

Mol	Type	Chain	Res	Link	Chirals	Torsions	Rings
5	NAG	A	1546	1	1/1/5/7	0/6/23/26	0/1/1/1
4	PEG	B	1545	-	-	4/4/4/4	-
4	PEG	B	1546	-	-	1/1/1/4	-
4	PEG	A	1545	-	-	2/4/4/4	-
2	B3W	A	600[B]	-	-	7/17/17/17	0/1/1/1

All (9) bond length outliers are listed below:

Mol	Chain	Res	Type	Atoms	Z	Observed(Å)	Ideal(Å)
2	A	600[A]	B3W	C5-S1	-5.01	1.68	1.76
2	A	600[B]	B3W	C5-S1	-4.92	1.68	1.76
2	B	600	B3W	C5-S1	-4.68	1.69	1.76
2	B	600	B3W	S1-N4	3.29	1.66	1.61
2	A	600[B]	B3W	S1-N4	3.25	1.66	1.61
2	A	600[A]	B3W	S1-N4	3.10	1.66	1.61
2	B	600	B3W	C21-N17	2.30	1.52	1.47
2	B	600	B3W	C22-N4	2.21	1.52	1.47
2	A	600[A]	B3W	C21-N17	2.17	1.52	1.47

All (20) bond angle outliers are listed below:

Mol	Chain	Res	Type	Atoms	Z	Observed(°)	Ideal(°)
5	B	1547	NAG	C1-O5-C5	5.82	119.98	112.19
5	B	1547	NAG	C4-C3-C2	-3.32	106.15	111.02
2	B	600	B3W	C9-C10-C5	3.06	122.42	119.44
2	A	600[A]	B3W	C7-C6-C5	2.94	122.30	119.44
2	A	600[B]	B3W	C9-C10-C5	2.92	122.28	119.44
2	A	600[A]	B3W	C21-C22-N4	2.74	115.45	110.35
5	A	1546	NAG	C1-O5-C5	2.71	115.81	112.19
2	B	600	B3W	C6-C5-C10	-2.62	117.05	120.47
2	B	600	B3W	C6-C5-S1	2.59	122.60	119.76
2	A	600[B]	B3W	C6-C5-S1	2.55	122.56	119.76
2	A	600[A]	B3W	C6-C5-C10	-2.40	117.33	120.47
2	B	600	B3W	C7-C6-C5	2.37	121.75	119.44
2	A	600[A]	B3W	C10-C5-S1	2.32	122.31	119.76
2	A	600[B]	B3W	C5-S1-N4	-2.32	104.34	107.54
2	A	600[B]	B3W	C6-C5-C10	-2.31	117.45	120.47
2	B	600	B3W	C21-C22-N4	2.30	114.63	110.35
2	A	600[B]	B3W	C21-C22-N4	2.29	114.61	110.35
2	A	600[B]	B3W	C22-C21-N17	-2.23	107.38	112.84
2	A	600[A]	B3W	C9-C10-C5	2.16	121.54	119.44

Continued on next page...

Continued from previous page...

Mol	Chain	Res	Type	Atoms	Z	Observed(°)	Ideal(°)
2	A	600[B]	B3W	C7-C6-C5	2.14	121.53	119.44

All (1) chirality outliers are listed below:

Mol	Chain	Res	Type	Atom
5	A	1546	NAG	C1

All (46) torsion outliers are listed below:

Mol	Chain	Res	Type	Atoms
5	B	1547	NAG	C8-C7-N2-C2
5	B	1547	NAG	O7-C7-N2-C2
2	A	600[B]	B3W	C22-N4-S1-C5
6	B	1550	P6G	O10-C11-C12-O13
5	B	1547	NAG	O5-C5-C6-O6
6	B	1550	P6G	O4-C5-C6-O7
4	B	1548	PEG	O1-C1-C2-O2
6	B	1550	P6G	O7-C8-C9-O10
4	B	1549	PEG	O2-C3-C4-O4
2	B	600	B3W	C10-C5-S1-O2
2	B	600	B3W	C6-C5-S1-O2
2	B	600	B3W	C6-C5-S1-N4
2	B	600	B3W	C12-C11-N17-C21
2	A	600[A]	B3W	C20-C16-N17-C21
4	A	1544	PEG	O2-C3-C4-O4
4	B	1545	PEG	O1-C1-C2-O2
2	B	600	B3W	C10-C5-S1-N4
2	A	600[A]	B3W	C12-C11-N17-C21
2	A	600[A]	B3W	C20-C16-N17-C11
2	B	600	B3W	C20-C16-N17-C11
2	B	600	B3W	C20-C16-N17-C21
2	A	600[B]	B3W	C10-C5-S1-O1
4	B	1545	PEG	O2-C3-C4-O4
2	A	600[B]	B3W	C20-C16-N17-C21
2	B	600	B3W	C22-N4-S1-O1
2	A	600[B]	B3W	C6-C5-S1-O1
2	A	600[A]	B3W	C12-C11-N17-C16
6	B	1550	P6G	O1-C2-C3-O4
2	B	600	B3W	C22-N4-S1-O2
5	B	1547	NAG	C4-C5-C6-O6
4	B	1545	PEG	C4-C3-O2-C2
4	A	1545	PEG	O2-C3-C4-O4

Continued on next page...

Continued from previous page...

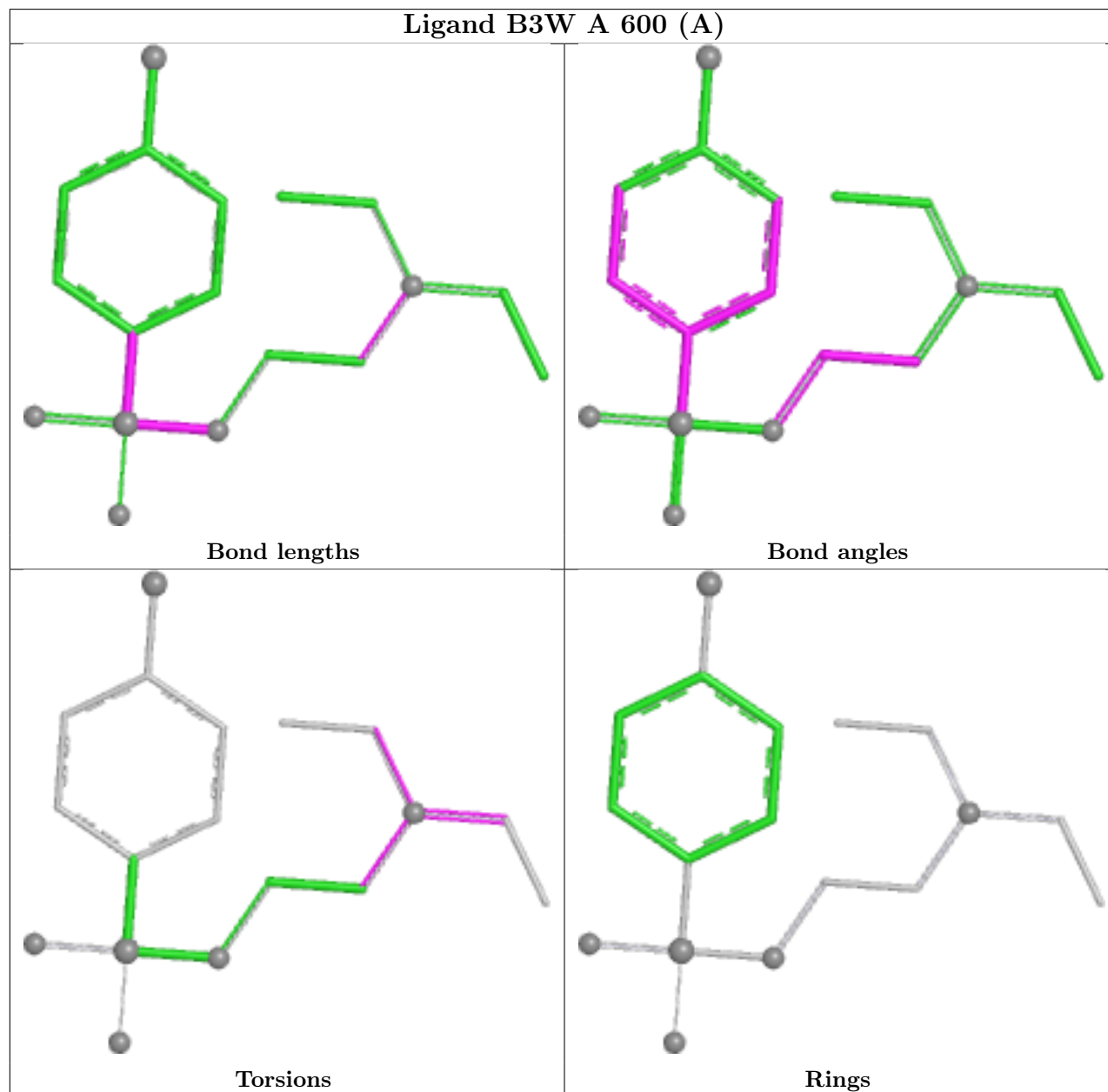
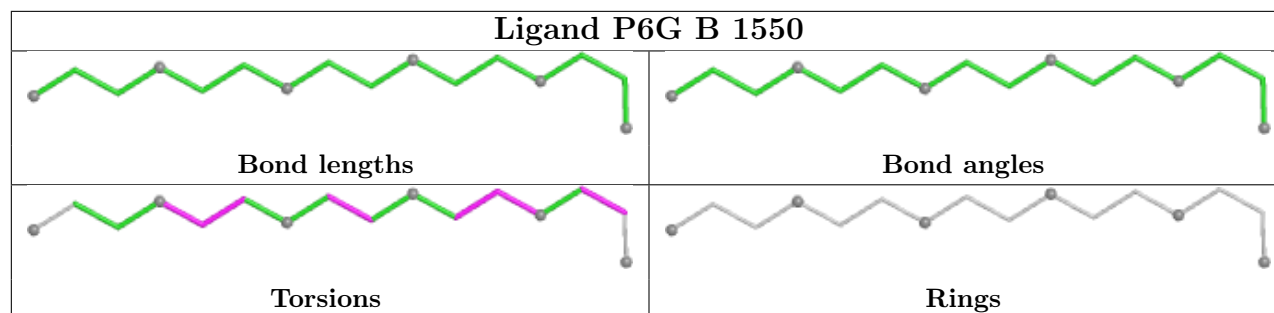
Mol	Chain	Res	Type	Atoms
4	B	1549	PEG	C4-C3-O2-C2
6	B	1550	P6G	C11-C12-O13-C14
6	B	1550	P6G	C6-C5-O4-C3
4	B	1546	PEG	O1-C1-C2-O2
2	B	600	B3W	N17-C21-C22-N4
2	B	600	B3W	C22-N4-S1-C5
2	A	600[B]	B3W	C10-C5-S1-N4
2	A	600[B]	B3W	C20-C16-N17-C11
2	B	600	B3W	C12-C11-N17-C16
4	A	1545	PEG	O1-C1-C2-O2
2	A	600[B]	B3W	C6-C5-S1-N4
2	A	600[A]	B3W	C22-C21-N17-C11
4	B	1545	PEG	C1-C2-O2-C3
4	A	1544	PEG	C4-C3-O2-C2

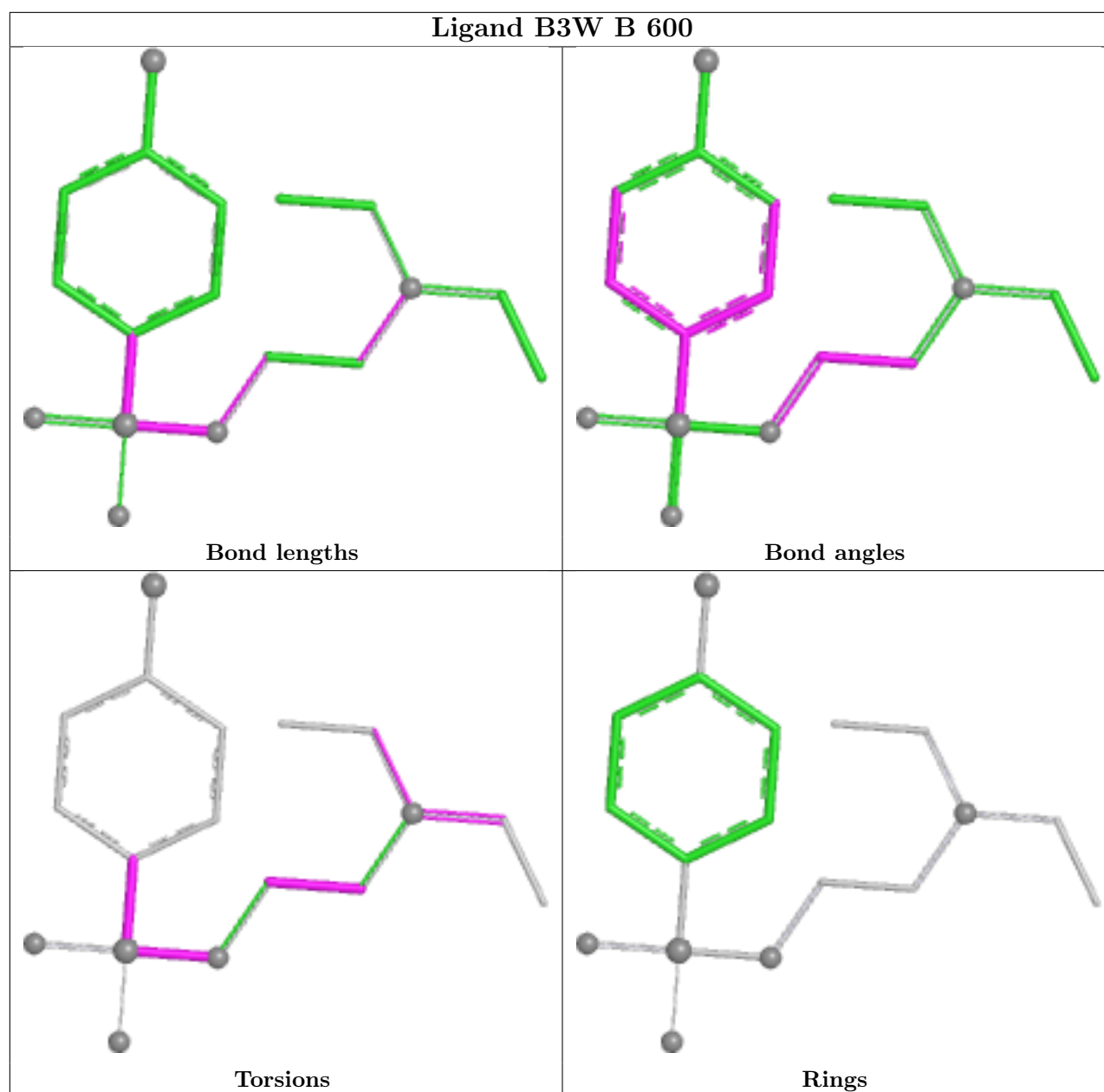
There are no ring outliers.

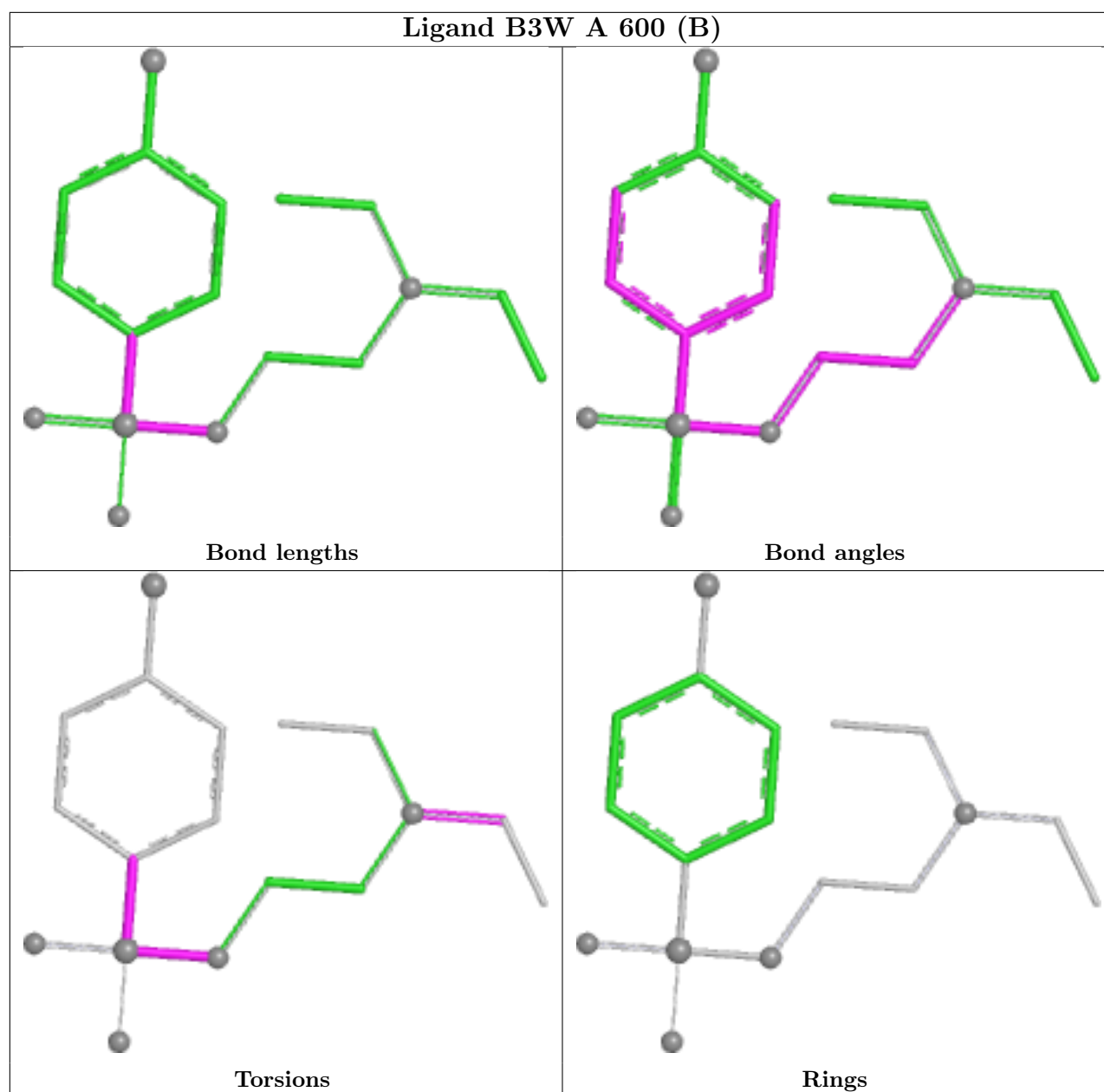
4 monomers are involved in 9 short contacts:

Mol	Chain	Res	Type	Clashes	Symm-Clashes
6	B	1550	P6G	4	0
2	A	600[A]	B3W	1	0
4	B	1546	PEG	2	0
2	A	600[B]	B3W	2	0

The following is a two-dimensional graphical depiction of Mogul quality analysis of bond lengths, bond angles, torsion angles, and ring geometry for all instances of the Ligand of Interest. In addition, ligands with molecular weight > 250 and outliers as shown on the validation Tables will also be included. For torsion angles, if less than 5% of the Mogul distribution of torsion angles is within 10 degrees of the torsion angle in question, then that torsion angle is considered an outlier. Any bond that is central to one or more torsion angles identified as an outlier by Mogul will be highlighted in the graph. For rings, the root-mean-square deviation (RMSD) between the ring in question and similar rings identified by Mogul is calculated over all ring torsion angles. If the average RMSD is greater than 60 degrees and the minimal RMSD between the ring in question and any Mogul-identified rings is also greater than 60 degrees, then that ring is considered an outlier. The outliers are highlighted in purple. The color gray indicates Mogul did not find sufficient equivalents in the CSD to analyse the geometry.







5.7 Other polymers [i](#)

There are no such residues in this entry.

5.8 Polymer linkage issues [i](#)

There are no chain breaks in this entry.

6 Fit of model and data ⓘ

6.1 Protein, DNA and RNA chains ⓘ

In the following table, the column labelled ‘#RSRZ> 2’ contains the number (and percentage) of RSRZ outliers, followed by percent RSRZ outliers for the chain as percentile scores relative to all X-ray entries and entries of similar resolution. The OWAB column contains the minimum, median, 95th percentile and maximum values of the occupancy-weighted average B-factor per residue. The column labelled ‘Q< 0.9’ lists the number of (and percentage) of residues with an average occupancy less than 0.9.

Mol	Chain	Analysed	<RSRZ>	#RSRZ>2	OWAB(Å ²)	Q<0.9
1	A	536/548 (97%)	-0.24	14 (2%) 56 61	21, 36, 68, 145	0
1	B	533/548 (97%)	-0.17	16 (3%) 50 56	25, 40, 74, 115	0
All	All	1069/1096 (97%)	-0.20	30 (2%) 53 59	21, 38, 72, 145	0

All (30) RSRZ outliers are listed below:

Mol	Chain	Res	Type	RSRZ
1	A	495	SER	6.9
1	A	76	LEU	5.5
1	A	493	ARG	4.5
1	B	542	ALA	4.1
1	B	497	SER	4.0
1	B	543	THR	3.6
1	B	346	PHE	3.5
1	A	494	ASP	3.5
1	B	541	SER	3.1
1	A	541	SER	2.9
1	A	496	LYS	2.9
1	B	540	LEU	2.8
1	A	497	SER	2.8
1	A	347	SER	2.8
1	B	347	SER	2.8
1	B	342	GLY	2.6
1	B	109	ALA	2.6
1	A	491	ASP	2.5
1	A	492	PRO	2.4
1	A	318	THR	2.4
1	B	349	ASP	2.3
1	B	322	GLN	2.3
1	A	317	ASN	2.2
1	A	75	THR	2.2

Continued on next page...

Continued from previous page...

Mol	Chain	Res	Type	RSRZ
1	B	4	GLU	2.2
1	B	75	THR	2.2
1	B	318	THR	2.1
1	B	42	VAL	2.0
1	A	216	LEU	2.0
1	B	348	LYS	2.0

6.2 Non-standard residues in protein, DNA, RNA chains ⓘ

There are no non-standard protein/DNA/RNA residues in this entry.

6.3 Carbohydrates ⓘ

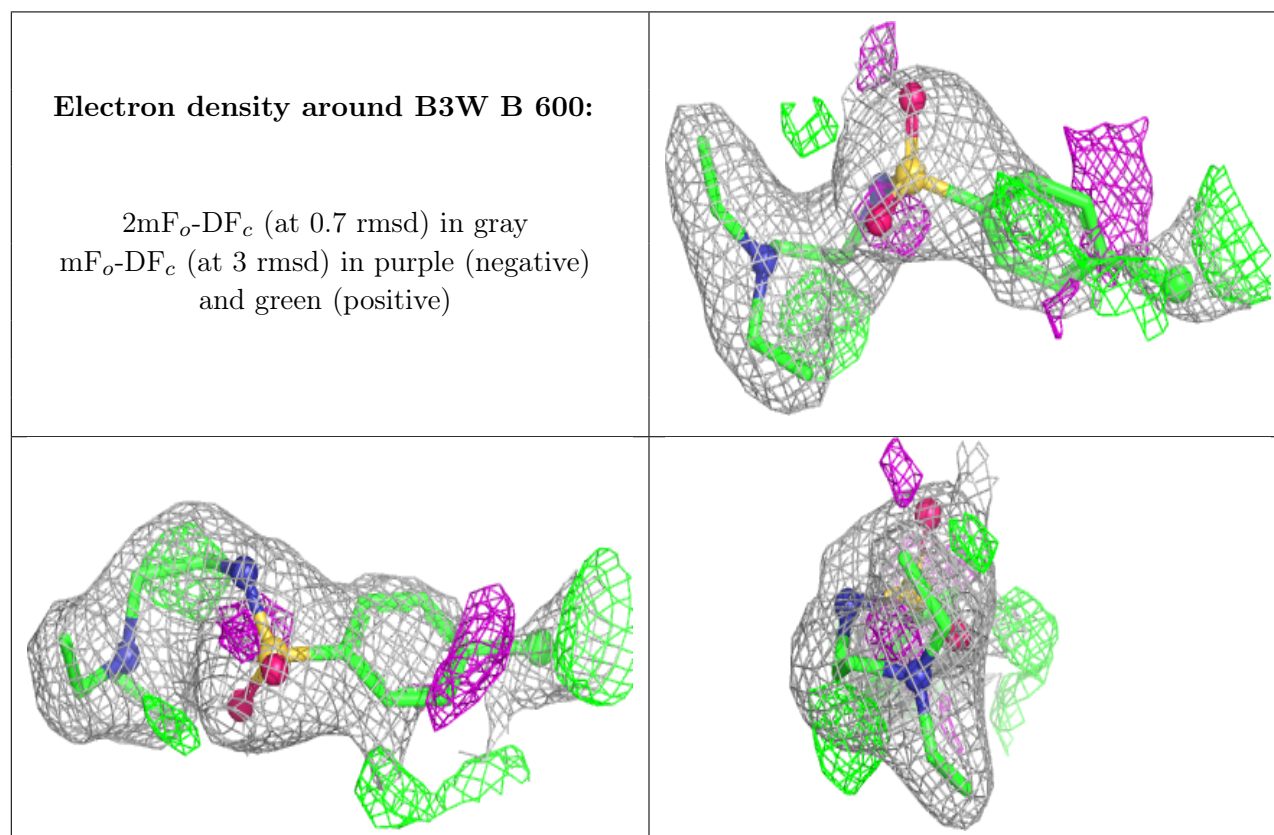
There are no monosaccharides in this entry.

6.4 Ligands ⓘ

In the following table, the Atoms column lists the number of modelled atoms in the group and the number defined in the chemical component dictionary. The B-factors column lists the minimum, median, 95th percentile and maximum values of B factors of atoms in the group. The column labelled 'Q< 0.9' lists the number of atoms with occupancy less than 0.9.

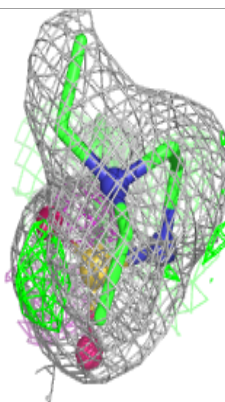
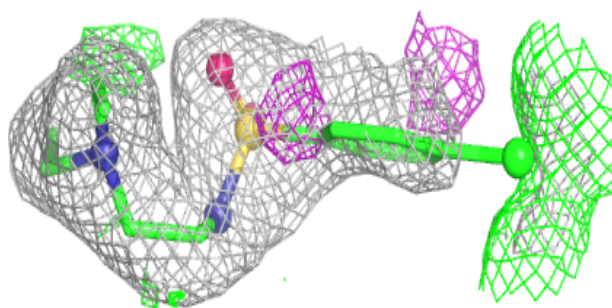
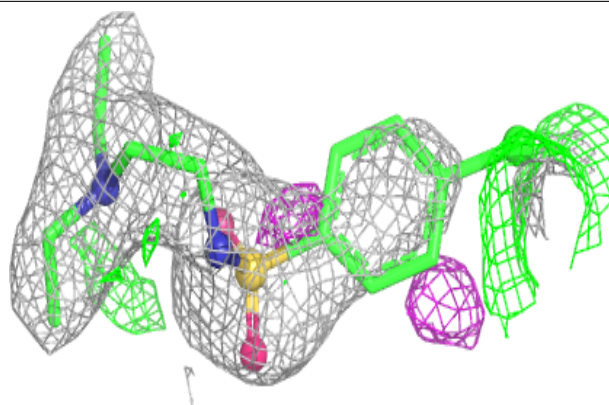
Mol	Type	Chain	Res	Atoms	RSCC	RSR	B-factors(Å ²)	Q<0.9
5	NAG	B	1547	14/15	0.63	0.41	86,105,120,123	0
4	PEG	B	1548	7/7	0.65	0.22	77,83,89,91	0
5	NAG	A	1546	14/15	0.75	0.37	99,111,121,123	0
4	PEG	B	1545	7/7	0.80	0.15	69,73,74,75	0
4	PEG	A	1548	4/7	0.85	0.18	76,78,79,83	0
4	PEG	A	1547	4/7	0.87	0.18	69,71,72,77	0
4	PEG	B	1546	4/7	0.88	0.15	76,79,87,88	0
2	B3W	B	600	18/18	0.89	0.20	41,62,90,116	0
2	B3W	A	600[A]	18/18	0.90	0.26	40,48,56,102	18
4	PEG	B	1549	7/7	0.90	0.17	73,78,83,86	0
4	PEG	A	1544	7/7	0.90	0.13	55,66,71,72	0
2	B3W	A	600[B]	18/18	0.90	0.26	30,43,58,64	18
6	P6G	B	1550	16/19	0.90	0.20	33,63,71,76	0
3	SO4	A	1543	5/5	0.92	0.12	73,84,86,88	0
4	PEG	A	1545	7/7	0.93	0.20	63,68,77,78	0
3	SO4	B	1544	5/5	0.94	0.14	96,98,101,105	0

The following is a graphical depiction of the model fit to experimental electron density of all instances of the Ligand of Interest. In addition, ligands with molecular weight > 250 and outliers as shown on the geometry validation Tables will also be included. Each fit is shown from different orientation to approximate a three-dimensional view.

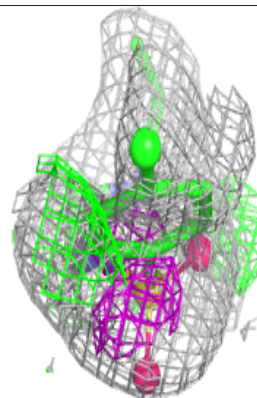
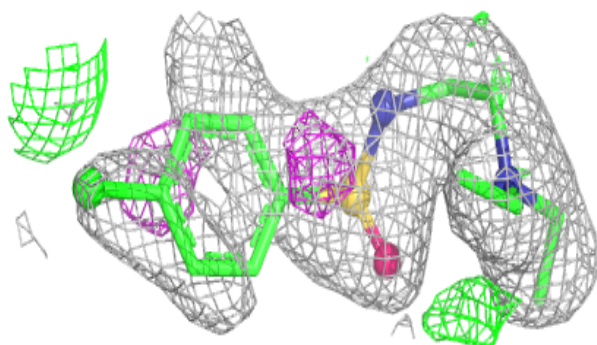
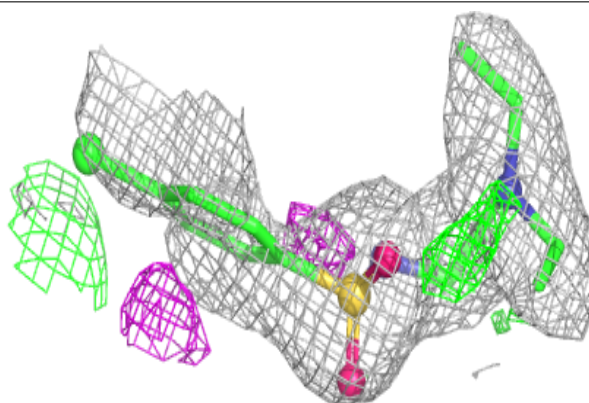


Electron density around B3W A 600 (A):

$2mF_o-DF_c$ (at 0.7 rmsd) in gray
 mF_o-DF_c (at 3 rmsd) in purple (negative)
and green (positive)

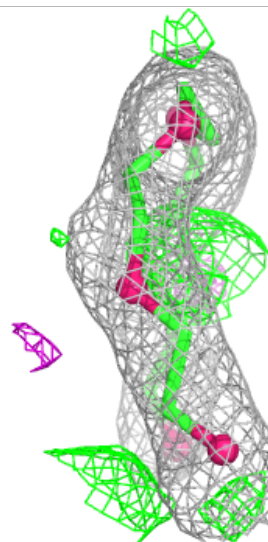
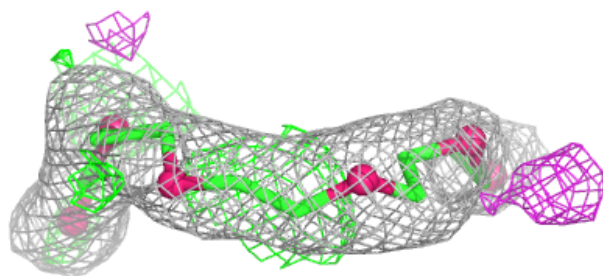
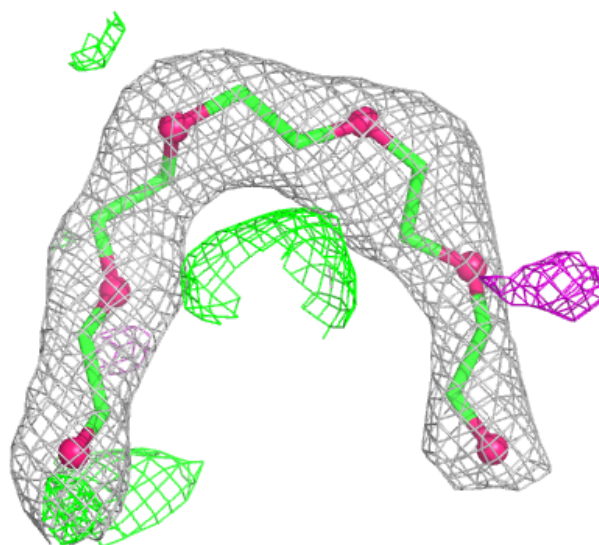
**Electron density around B3W A 600 (B):**

$2mF_o-DF_c$ (at 0.7 rmsd) in gray
 mF_o-DF_c (at 3 rmsd) in purple (negative)
and green (positive)



Electron density around P6G B 1550:

$2mF_o-DF_c$ (at 0.7 rmsd) in gray
 mF_o-DF_c (at 3 rmsd) in purple (negative)
and green (positive)



6.5 Other polymers ⓘ

There are no such residues in this entry.