



# wwPDB X-ray Structure Validation Summary Report ⓘ

Nov 9, 2024 – 07:08 AM EST

PDB ID : 1AVE  
Title : CRYSTAL STRUCTURE OF HEN EGG-WHITE APO-AVIDIN IN RELATION TO ITS THERMAL STABILITY PROPERTIES  
Authors : Pugliese, L.; Coda, A.; Malcovati, M.; Bolognesi, M.  
Deposited on : 1993-03-05  
Resolution : 2.80 Å(reported)

This is a wwPDB X-ray Structure Validation Summary Report for a publicly released PDB entry.

We welcome your comments at [validation@mail.wwpdb.org](mailto:validation@mail.wwpdb.org)

A user guide is available at

<https://www.wwpdb.org/validation/2017/XrayValidationReportHelp>

with specific help available everywhere you see the ⓘ symbol.

The types of validation reports are described at

<http://www.wwpdb.org/validation/2017/FAQs#types>.

---

The following versions of software and data (see [references ⓘ](#)) were used in the production of this report:

MolProbity	:	4.02b-467
Mogul	:	2022.3.0, CSD as543be (2022)
Xtriage (Phenix)	:	1.20.1
EDS	:	3.0
Percentile statistics	:	20231227.v01 (using entries in the PDB archive December 27th 2023)
CCP4	:	9.0.003 (Gargrove)
Density-Fitness	:	1.0.11
Ideal geometry (proteins)	:	Engh & Huber (2001)
Ideal geometry (DNA, RNA)	:	Parkinson et al. (1996)
Validation Pipeline (wwPDB-VP)	:	2.39

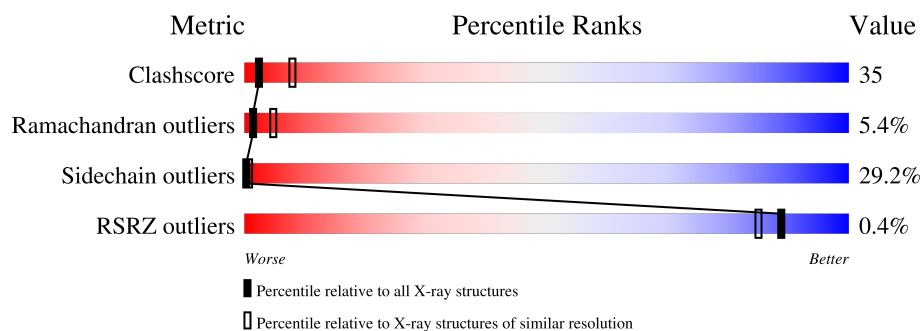
# 1 Overall quality at a glance

The following experimental techniques were used to determine the structure:

*X-RAY DIFFRACTION*

The reported resolution of this entry is 2.80 Å.

Percentile scores (ranging between 0-100) for global validation metrics of the entry are shown in the following graphic. The table shows the number of entries on which the scores are based.



Metric	Whole archive (#Entries)	Similar resolution (#Entries, resolution range(Å))
Clashscore	180529	4123 (2.80-2.80)
Ramachandran outliers	177936	4071 (2.80-2.80)
Sidechain outliers	177891	4073 (2.80-2.80)
RSRZ outliers	164620	3659 (2.80-2.80)

The table below summarises the geometric issues observed across the polymeric chains and their fit to the electron density. The red, orange, yellow and green segments of the lower bar indicate the fraction of residues that contain outliers for  $\geq 3$ , 2, 1 and 0 types of geometric quality criteria respectively. A grey segment represents the fraction of residues that are not modelled. The numeric value for each fraction is indicated below the corresponding segment, with a dot representing fractions  $\leq 5\%$ . The upper red bar (where present) indicates the fraction of residues that have poor fit to the electron density. The numeric value is given above the bar.

Mol	Chain	Length	Quality of chain
1	A	128	
1	B	128	

## 2 Entry composition [i](#)

There are 3 unique types of molecules in this entry. The entry contains 1977 atoms, of which 0 are hydrogens and 0 are deuteriums.

In the tables below, the ZeroOcc column contains the number of atoms modelled with zero occupancy, the AltConf column contains the number of residues with at least one atom in alternate conformation and the Trace column contains the number of residues modelled with at most 2 atoms.

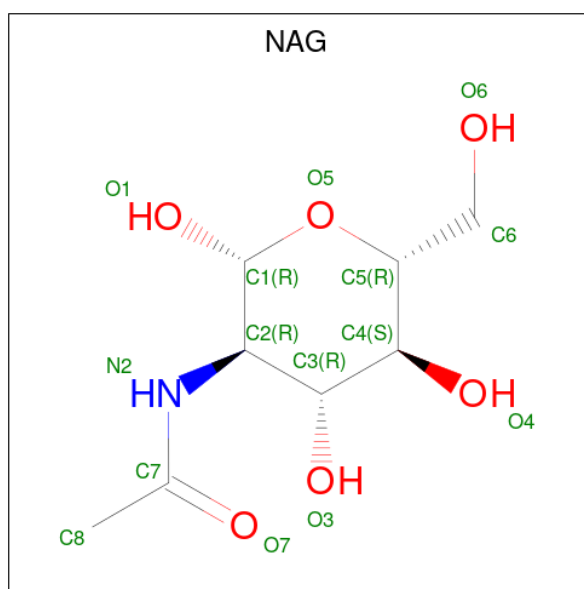
- Molecule 1 is a protein called AVIDIN.

Mol	Chain	Residues	Atoms					ZeroOcc	AltConf	Trace
1	A	123	Total	C	N	O	S	86	0	0
			964	602	170	188	4			
1	B	123	Total	C	N	O	S	70	0	0
			964	602	170	188	4			

There are 2 discrepancies between the modelled and reference sequences:

Chain	Residue	Modelled	Actual	Comment	Reference
A	34	THR	ILE	SEE REMARK 999	UNP P02701
B	34	THR	ILE	SEE REMARK 999	UNP P02701

- Molecule 2 is 2-acetamido-2-deoxy-beta-D-glucopyranose (three-letter code: NAG) (formula: C<sub>8</sub>H<sub>15</sub>NO<sub>6</sub>).



Mol	Chain	Residues	Atoms				ZeroOcc	AltConf
2	A	1	Total	C	N	O	4	0
			14	8	1	5		

*Continued on next page...*

*Continued from previous page...*

Mol	Chain	Residues	Atoms				ZeroOcc	AltConf
2	B	1	Total	C	N	O	11	0
			14	8	1	5		

- Molecule 3 is water.

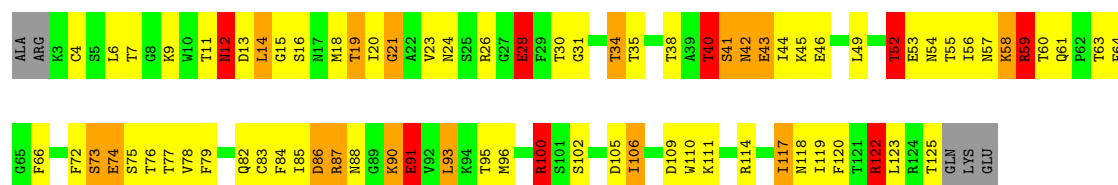
Mol	Chain	Residues	Atoms		ZeroOcc	AltConf
3	A	15	Total	O	0	0
			15	15		
3	B	6	Total	O	0	0
			6	6		

### 3 Residue-property plots [i](#)

These plots are drawn for all protein, RNA, DNA and oligosaccharide chains in the entry. The first graphic for a chain summarises the proportions of the various outlier classes displayed in the second graphic. The second graphic shows the sequence view annotated by issues in geometry and electron density. Residues are color-coded according to the number of geometric quality criteria for which they contain at least one outlier: green = 0, yellow = 1, orange = 2 and red = 3 or more. A red dot above a residue indicates a poor fit to the electron density ( $RSRZ > 2$ ). Stretches of 2 or more consecutive residues without any outlier are shown as a green connector. Residues present in the sample, but not in the model, are shown in grey.

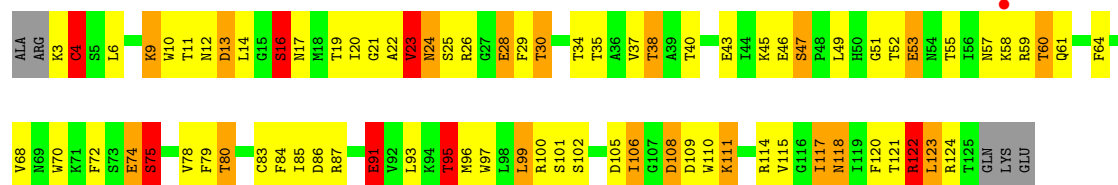
#### • Molecule 1: AVIDIN

Chain A: 



#### • Molecule 1: AVIDIN

Chain B: 



## 4 Data and refinement statistics

Property	Value	Source
Space group	P 42 21 2	Depositor
Cell constants a, b, c, $\alpha$ , $\beta$ , $\gamma$	80.15Å 80.15Å 85.28Å 90.00° 90.00° 90.00°	Depositor
Resolution (Å)	(Not available) – 2.80 58.40 – 2.82	Depositor EDS
% Data completeness (in resolution range)	(Not available) ((Not available)-2.80) 89.5 (58.40-2.82)	Depositor EDS
$R_{merge}$	(Not available)	Depositor
$R_{sym}$	(Not available)	Depositor
$\langle I/\sigma(I) \rangle$	-	Xtriage
Refinement program	TNT	Depositor
R, $R_{free}$	0.166 , (Not available) (Not available) , (Not available)	Depositor DCC
$R_{free}$ test set	No test flags present.	wwPDB-VP
Wilson B-factor (Å <sup>2</sup> )	42.0	Xtriage
Anisotropy	0.266	Xtriage
Bulk solvent $k_{sol}$ (e/Å <sup>3</sup> ), $B_{sol}$ (Å <sup>2</sup> )	0.35 , 226.5	EDS
L-test for twinning <sup>1</sup>	$\langle  L  \rangle = 0.46$ , $\langle L^2 \rangle = 0.29$	Xtriage
Estimated twinning fraction	No twinning to report.	Xtriage
$F_o, F_c$ correlation	0.93	EDS
Total number of atoms	1977	wwPDB-VP
Average B, all atoms (Å <sup>2</sup> )	32.0	wwPDB-VP

Xtriage's analysis on translational NCS is as follows: *The largest off-origin peak in the Patterson function is 4.80% of the height of the origin peak. No significant pseudotranslation is detected.*

<sup>1</sup>Theoretical values of  $\langle |L| \rangle$ ,  $\langle L^2 \rangle$  for acentric reflections are 0.5, 0.333 respectively for untwinned datasets, and 0.375, 0.2 for perfectly twinned datasets.

## 5 Model quality

### 5.1 Standard geometry

Bond lengths and bond angles in the following residue types are not validated in this section: NAG

The Z score for a bond length (or angle) is the number of standard deviations the observed value is removed from the expected value. A bond length (or angle) with  $|Z| > 5$  is considered an outlier worth inspection. RMSZ is the root-mean-square of all Z scores of the bond lengths (or angles).

Mol	Chain	Bond lengths		Bond angles	
		RMSZ	$\# Z  > 5$	RMSZ	$\# Z  > 5$
1	A	1.17	6/982 (0.6%)	1.63	14/1330 (1.1%)
1	B	1.21	6/982 (0.6%)	1.67	21/1330 (1.6%)
All	All	1.19	12/1964 (0.6%)	1.65	35/2660 (1.3%)

Chiral center outliers are detected by calculating the chiral volume of a chiral center and verifying if the center is modelled as a planar moiety or with the opposite hand. A planarity outlier is detected by checking planarity of atoms in a peptide group, atoms in a mainchain group or atoms of a sidechain that are expected to be planar.

Mol	Chain	#Chirality outliers	#Planarity outliers
1	A	0	1
1	B	1	0
All	All	1	1

The worst 5 of 12 bond length outliers are listed below:

Mol	Chain	Res	Type	Atoms	Z	Observed(Å)	Ideal(Å)
1	B	91	GLU	CD-OE2	7.69	1.34	1.25
1	B	91	GLU	CD-OE1	-6.65	1.18	1.25
1	A	28	GLU	CD-OE2	6.03	1.32	1.25
1	B	43	GLU	CD-OE2	5.84	1.32	1.25
1	B	46	GLU	CD-OE2	5.79	1.32	1.25

The worst 5 of 35 bond angle outliers are listed below:

Mol	Chain	Res	Type	Atoms	Z	Observed(°)	Ideal(°)
1	A	12	ASN	CB-CA-C	-9.65	91.11	110.40
1	A	100	ARG	NE-CZ-NH1	8.79	124.70	120.30
1	B	105	ASP	CB-CG-OD1	-8.52	110.63	118.30
1	A	86	ASP	CB-CG-OD2	-8.29	110.84	118.30

*Continued on next page...*

*Continued from previous page...*

Mol	Chain	Res	Type	Atoms	Z	Observed(°)	Ideal(°)
1	B	108	ASP	CB-CG-OD1	-8.27	110.86	118.30

All (1) chirality outliers are listed below:

Mol	Chain	Res	Type	Atom
1	B	4	CYS	CA

All (1) planarity outliers are listed below:

Mol	Chain	Res	Type	Group
1	A	12	ASN	Mainchain

## 5.2 Too-close contacts [i](#)

In the following table, the Non-H and H(model) columns list the number of non-hydrogen atoms and hydrogen atoms in the chain respectively. The H(added) column lists the number of hydrogen atoms added and optimized by MolProbity. The Clashes column lists the number of clashes within the asymmetric unit, whereas Symm-Clashes lists symmetry-related clashes.

Mol	Chain	Non-H	H(model)	H(added)	Clashes	Symm-Clashes
1	A	964	0	946	65	0
1	B	964	0	946	58	0
2	A	14	0	13	0	0
2	B	14	0	13	0	0
3	A	15	0	0	2	0
3	B	6	0	0	1	0
All	All	1977	0	1918	121	0

The all-atom clashscore is defined as the number of clashes found per 1000 atoms (including hydrogen atoms). The all-atom clashscore for this structure is 35.

The worst 5 of 121 close contacts within the same asymmetric unit are listed below, sorted by their clash magnitude.

Atom-1	Atom-2	Interatomic distance (Å)	Clash overlap (Å)
1:B:38:THR:HG21	1:B:72:PHE:CE2	2.00	0.95
1:B:38:THR:HG21	1:B:72:PHE:CZ	2.03	0.94
1:B:16:SER:HB3	1:B:35:THR:HA	1.57	0.87
1:B:93:LEU:HB2	1:B:120:PHE:HB2	1.57	0.85
1:B:4:CYS:HB2	1:B:91:GLU:CG	2.09	0.83



There are no symmetry-related clashes.

## 5.3 Torsion angles [i](#)

### 5.3.1 Protein backbone [i](#)

In the following table, the Percentiles column shows the percent Ramachandran outliers of the chain as a percentile score with respect to all X-ray entries followed by that with respect to entries of similar resolution.

The Analysed column shows the number of residues for which the backbone conformation was analysed, and the total number of residues.

Mol	Chain	Analysed	Favoured	Allowed	Outliers	Percentiles	
1	A	121/128 (94%)	102 (84%)	11 (9%)	8 (7%)	1	3
1	B	121/128 (94%)	106 (88%)	10 (8%)	5 (4%)	2	8
All	All	242/256 (94%)	208 (86%)	21 (9%)	13 (5%)	1	5

5 of 13 Ramachandran outliers are listed below:

Mol	Chain	Res	Type
1	A	58	LYS
1	A	59	ARG
1	B	13	ASP
1	B	23	VAL
1	B	58	LYS

### 5.3.2 Protein sidechains [i](#)

In the following table, the Percentiles column shows the percent sidechain outliers of the chain as a percentile score with respect to all X-ray entries followed by that with respect to entries of similar resolution.

The Analysed column shows the number of residues for which the sidechain conformation was analysed, and the total number of residues.

Mol	Chain	Analysed	Rotameric	Outliers	Percentiles	
1	A	108/112 (96%)	79 (73%)	29 (27%)	0	1
1	B	108/112 (96%)	74 (68%)	34 (32%)	0	0
All	All	216/224 (96%)	153 (71%)	63 (29%)	0	1

5 of 63 residues with a non-rotameric sidechain are listed below:

Mol	Chain	Res	Type
1	A	125	THR
1	B	102	SER
1	B	25	SER
1	B	99	LEU
1	B	121	THR

Sometimes sidechains can be flipped to improve hydrogen bonding and reduce clashes. 5 of 8 such sidechains are listed below:

Mol	Chain	Res	Type
1	B	50	HIS
1	B	24	ASN
1	A	118	ASN
1	A	61	GLN
1	B	12	ASN

### 5.3.3 RNA [i](#)

There are no RNA molecules in this entry.

## 5.4 Non-standard residues in protein, DNA, RNA chains [i](#)

There are no non-standard protein/DNA/RNA residues in this entry.

## 5.5 Carbohydrates [i](#)

There are no oligosaccharides in this entry.

## 5.6 Ligand geometry [i](#)

2 ligands are modelled in this entry.

In the following table, the Counts columns list the number of bonds (or angles) for which Mogul statistics could be retrieved, the number of bonds (or angles) that are observed in the model and the number of bonds (or angles) that are defined in the Chemical Component Dictionary. The Link column lists molecule types, if any, to which the group is linked. The Z score for a bond length (or angle) is the number of standard deviations the observed value is removed from the expected value. A bond length (or angle) with  $|Z| > 2$  is considered an outlier worth inspection. RMSZ is the root-mean-square of all Z scores of the bond lengths (or angles).

Mol	Type	Chain	Res	Link	Bond lengths			Bond angles		
					Counts	RMSZ	# Z  > 2	Counts	RMSZ	# Z  > 2
2	NAG	B	601	1	14,14,15	0.98	1 (7%)	17,19,21	1.17	3 (17%)
2	NAG	A	600	1	14,14,15	0.99	1 (7%)	17,19,21	1.83	5 (29%)

In the following table, the Chirals column lists the number of chiral outliers, the number of chiral centers analysed, the number of these observed in the model and the number defined in the Chemical Component Dictionary. Similar counts are reported in the Torsion and Rings columns. '-' means no outliers of that kind were identified.

Mol	Type	Chain	Res	Link	Chirals	Torsions	Rings
2	NAG	B	601	1	-	4/6/23/26	0/1/1/1
2	NAG	A	600	1	-	2/6/23/26	0/1/1/1

All (2) bond length outliers are listed below:

Mol	Chain	Res	Type	Atoms	Z	Observed(Å)	Ideal(Å)
2	B	601	NAG	C8-C7	3.15	1.57	1.50
2	A	600	NAG	C8-C7	3.13	1.57	1.50

The worst 5 of 8 bond angle outliers are listed below:

Mol	Chain	Res	Type	Atoms	Z	Observed(°)	Ideal(°)
2	A	600	NAG	O4-C4-C5	5.01	121.66	109.32
2	A	600	NAG	C1-O5-C5	2.60	115.67	112.19
2	B	601	NAG	O3-C3-C4	-2.23	105.11	110.38
2	B	601	NAG	C1-O5-C5	2.18	115.11	112.19
2	A	600	NAG	O4-C4-C3	-2.16	105.28	110.38

There are no chirality outliers.

5 of 6 torsion outliers are listed below:

Mol	Chain	Res	Type	Atoms
2	B	601	NAG	C8-C7-N2-C2
2	B	601	NAG	O7-C7-N2-C2
2	A	600	NAG	C4-C5-C6-O6
2	A	600	NAG	O5-C5-C6-O6
2	B	601	NAG	O5-C5-C6-O6

There are no ring outliers.

No monomer is involved in short contacts.

## 5.7 Other polymers [i](#)

There are no such residues in this entry.

## 5.8 Polymer linkage issues [i](#)

There are no chain breaks in this entry.

## 6 Fit of model and data [i](#)

### 6.1 Protein, DNA and RNA chains [i](#)

In the following table, the column labelled ‘#RSRZ > 2’ contains the number (and percentage) of RSRZ outliers, followed by percent RSRZ outliers for the chain as percentile scores relative to all X-ray entries and entries of similar resolution. The OWAB column contains the minimum, median, 95<sup>th</sup> percentile and maximum values of the occupancy-weighted average B-factor per residue. The column labelled ‘Q < 0.9’ lists the number of (and percentage) of residues with an average occupancy less than 0.9.

Mol	Chain	Analysed	<RSRZ>	#RSRZ > 2		OWAB(Å <sup>2</sup> )	Q < 0.9
1	A	121/128 (94%)	-0.71	0	100   100	1, 27, 49, 60	19 (15%)
1	B	122/128 (95%)	-0.60	1 (0%)	82   77	9, 29, 51, 71	29 (23%)
All	All	243/256 (94%)	-0.65	1 (0%)	89   85	1, 28, 51, 71	48 (19%)

All (1) RSRZ outliers are listed below:

Mol	Chain	Res	Type	RSRZ
1	B	58	LYS	3.7

### 6.2 Non-standard residues in protein, DNA, RNA chains [i](#)

There are no non-standard protein/DNA/RNA residues in this entry.

### 6.3 Carbohydrates [i](#)

There are no monosaccharides in this entry.

### 6.4 Ligands [i](#)

In the following table, the Atoms column lists the number of modelled atoms in the group and the number defined in the chemical component dictionary. The B-factors column lists the minimum, median, 95<sup>th</sup> percentile and maximum values of B factors of atoms in the group. The column labelled ‘Q < 0.9’ lists the number of atoms with occupancy less than 0.9.

Mol	Type	Chain	Res	Atoms	RSCC	RSR	B-factors(Å <sup>2</sup> )	Q < 0.9
2	NAG	B	601	14/15	0.78	0.14	27,55,90,90	11
2	NAG	A	600	14/15	0.89	0.13	20,82,90,90	4

## 6.5 Other polymers [i](#)

There are no such residues in this entry.