



wwPDB X-ray Structure Validation Summary Report ⓘ

Jun 16, 2024 – 02:01 AM EDT

PDB ID : 2AO2
Title : The 2.07 Angstrom crystal structure of Mycobacterium tuberculosis chorismate mutase reveals unexpected gene duplication and suggests a role in host-pathogen interactions
Authors : Qamra, R.; Prakash, P.; Aruna, B.; Hasnain, S.E.; Mande, S.C.; TB Structural Genomics Consortium (TBSGC)
Deposited on : 2005-08-12
Resolution : 2.07 Å(reported)

This is a wwPDB X-ray Structure Validation Summary Report for a publicly released PDB entry.

We welcome your comments at validation@mail.wwpdb.org

A user guide is available at

<https://www.wwpdb.org/validation/2017/XrayValidationReportHelp>

with specific help available everywhere you see the ⓘ symbol.

The types of validation reports are described at

<http://www.wwpdb.org/validation/2017/FAQs#types>.

The following versions of software and data (see [references ⓘ](#)) were used in the production of this report:

MolProbity	:	4.02b-467
Mogul	:	2022.3.0, CSD as543be (2022)
Xtriage (Phenix)	:	1.20.1
EDS	:	2.37.1
Percentile statistics	:	20191225.v01 (using entries in the PDB archive December 25th 2019)
Refmac	:	5.8.0158
CCP4	:	7.0.044 (Gargrove)
Ideal geometry (proteins)	:	Engh & Huber (2001)
Ideal geometry (DNA, RNA)	:	Parkinson et al. (1996)
Validation Pipeline (wwPDB-VP)	:	2.37.1

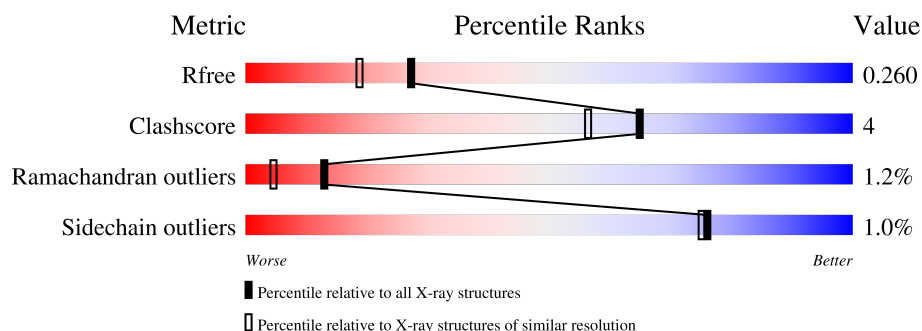
1 Overall quality at a glance

The following experimental techniques were used to determine the structure:

X-RAY DIFFRACTION

The reported resolution of this entry is 2.07 Å.

Percentile scores (ranging between 0-100) for global validation metrics of the entry are shown in the following graphic. The table shows the number of entries on which the scores are based.



Metric	Whole archive (#Entries)	Similar resolution (#Entries, resolution range(Å))
R_{free}	130704	2684 (2.08-2.04)
Clashscore	141614	2801 (2.08-2.04)
Ramachandran outliers	138981	2768 (2.08-2.04)
Sidechain outliers	138945	2768 (2.08-2.04)

The table below summarises the geometric issues observed across the polymeric chains and their fit to the electron density. The red, orange, yellow and green segments of the lower bar indicate the fraction of residues that contain outliers for ≥ 3 , 2, 1 and 0 types of geometric quality criteria respectively. A grey segment represents the fraction of residues that are not modelled. The numeric value for each fraction is indicated below the corresponding segment, with a dot representing fractions $\leq 5\%$.

Mol	Chain	Length	Quality of chain
1	A	165	<div> <div style="width: 95%;"></div> <div>95%</div> <div style="width: 5%;"></div> <div>5%</div> </div>
1	B	165	<div> <div style="width: 88%;"></div> <div>88%</div> <div style="width: 9%;"></div> <div>9%</div> <div style="width: 3%;"></div> <div>.</div> </div>
1	C	165	<div> <div style="width: 90%;"></div> <div>90%</div> <div style="width: 8%;"></div> <div>8%</div> <div style="width: 2%;"></div> <div>.</div> </div>

2 Entry composition [i](#)

There are 4 unique types of molecules in this entry. The entry contains 4167 atoms, of which 0 are hydrogens and 0 are deuteriums.

In the tables below, the ZeroOcc column contains the number of atoms modelled with zero occupancy, the AltConf column contains the number of residues with at least one atom in alternate conformation and the Trace column contains the number of residues modelled with at most 2 atoms.

- Molecule 1 is a protein called Chorismate mutase.

Mol	Chain	Residues	Atoms					ZeroOcc	AltConf	Trace
1	A	165	Total	C	N	O	S	0	0	0
			1293	802	235	253	3			
1	B	165	Total	C	N	O	S	0	0	0
			1293	802	235	253	3			
1	C	165	Total	C	N	O	S	0	0	0
			1293	802	235	253	3			

- Molecule 2 is SULFATE ION (three-letter code: SO4) (formula: O₄S).



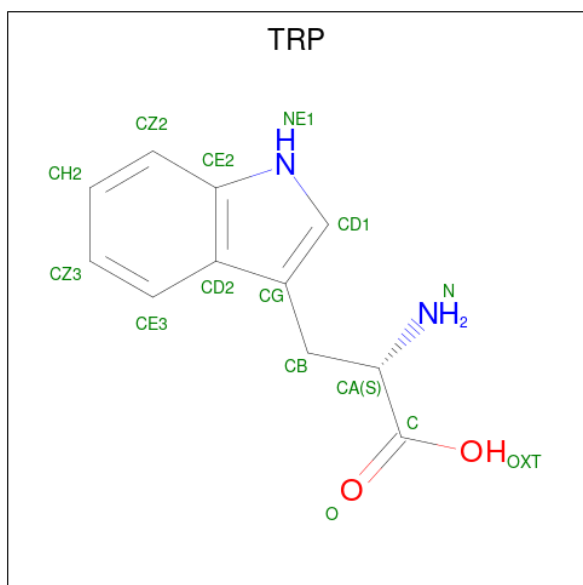
Mol	Chain	Residues	Atoms			ZeroOcc	AltConf
2	A	1	Total	O	S	0	0
			5	4	1		
2	A	1	Total	O	S	0	0
			5	4	1		
2	B	1	Total	O	S	0	0
			5	4	1		

Continued on next page...

Continued from previous page...

Mol	Chain	Residues	Atoms			ZeroOcc	AltConf
2	C	1	Total	O	S	0	0
			5	4	1		
2	C	1	Total	O	S	0	0
			5	4	1		

- Molecule 3 is TRYPTOPHAN (three-letter code: TRP) (formula: $C_{11}H_{12}N_2O_2$).



Mol	Chain	Residues	Atoms				ZeroOcc	AltConf
3	A	1	Total	C	N	O	0	0
			15	11	2	2		
3	B	1	Total	C	N	O	0	1
			30	22	4	4		

- Molecule 4 is water.

Mol	Chain	Residues	Atoms		ZeroOcc	AltConf
4	A	84	Total	O	0	0
			84	84		
4	B	66	Total	O	0	0
			66	66		
4	C	68	Total	O	0	0
			68	68		

3 Residue-property plots


These plots are drawn for all protein, RNA, DNA and oligosaccharide chains in the entry. The first graphic for a chain summarises the proportions of the various outlier classes displayed in the second graphic. The second graphic shows the sequence view annotated by issues in geometry. Residues are color-coded according to the number of geometric quality criteria for which they contain at least one outlier: green = 0, yellow = 1, orange = 2 and red = 3 or more. Stretches of 2 or more consecutive residues without any outlier are shown as a green connector. Residues present in the sample, but not in the model, are shown in grey.

- Molecule 1: Chorismate mutase

Chain A: 




- Molecule 1: Chorismate mutase

Chain B: 



- Molecule 1: Chorismate mutase

Chain C: 



4 Data and refinement statistics

Property	Value	Source
Space group	C 1 2 1	Depositor
Cell constants a, b, c, α , β , γ	124.45Å 83.84Å 62.67Å 90.00° 93.36° 90.00°	Depositor
Resolution (Å)	47.30 – 2.07 47.27 – 2.07	Depositor EDS
% Data completeness (in resolution range)	93.3 (47.30-2.07) 93.4 (47.27-2.07)	Depositor EDS
R_{merge}	(Not available)	Depositor
R_{sym}	(Not available)	Depositor
$\langle I/\sigma(I) \rangle$ ¹	2.17 (at 2.07Å)	Xtriage
Refinement program	REFMAC 5.2.0005	Depositor
R, R_{free}	0.178 , 0.224 0.230 , 0.260	Depositor DCC
R_{free} test set	1843 reflections (4.71%)	wwPDB-VP
Wilson B-factor (Å ²)	32.2	Xtriage
Anisotropy	0.129	Xtriage
Bulk solvent k_{sol} (e/Å ³), B_{sol} (Å ²)	0.36 , 42.6	EDS
L-test for twinning ²	$\langle L \rangle = 0.49$, $\langle L^2 \rangle = 0.32$	Xtriage
Estimated twinning fraction	No twinning to report.	Xtriage
F_o, F_c correlation	0.93	EDS
Total number of atoms	4167	wwPDB-VP
Average B, all atoms (Å ²)	42.0	wwPDB-VP

Xtriage's analysis on translational NCS is as follows: *The largest off-origin peak in the Patterson function is 5.22% of the height of the origin peak. No significant pseudotranslation is detected.*

¹Intensities estimated from amplitudes.

²Theoretical values of $\langle |L| \rangle$, $\langle L^2 \rangle$ for acentric reflections are 0.5, 0.333 respectively for untwinned datasets, and 0.375, 0.2 for perfectly twinned datasets.

5 Model quality

5.1 Standard geometry

Bond lengths and bond angles in the following residue types are not validated in this section: SO4

The Z score for a bond length (or angle) is the number of standard deviations the observed value is removed from the expected value. A bond length (or angle) with $|Z| > 5$ is considered an outlier worth inspection. RMSZ is the root-mean-square of all Z scores of the bond lengths (or angles).

Mol	Chain	Bond lengths		Bond angles	
		RMSZ	$\# Z > 5$	RMSZ	$\# Z > 5$
1	A	0.89	0/1321	0.80	0/1800
1	B	0.82	1/1321 (0.1%)	0.78	1/1800 (0.1%)
1	C	0.75	1/1321 (0.1%)	0.73	1/1800 (0.1%)
All	All	0.82	2/3963 (0.1%)	0.77	2/5400 (0.0%)

Chiral center outliers are detected by calculating the chiral volume of a chiral center and verifying if the center is modelled as a planar moiety or with the opposite hand. A planarity outlier is detected by checking planarity of atoms in a peptide group, atoms in a mainchain group or atoms of a sidechain that are expected to be planar.

Mol	Chain	#Chirality outliers	#Planarity outliers
1	A	0	1

All (2) bond length outliers are listed below:

Mol	Chain	Res	Type	Atoms	Z	Observed(Å)	Ideal(Å)
1	B	41	GLU	CG-CD	5.19	1.59	1.51
1	C	103	ARG	CG-CD	5.16	1.64	1.51

All (2) bond angle outliers are listed below:

Mol	Chain	Res	Type	Atoms	Z	Observed(°)	Ideal(°)
1	C	178	ASP	CB-CG-OD1	6.53	124.17	118.30
1	B	99	ASP	CB-CG-OD2	5.29	123.06	118.30

There are no chirality outliers.

All (1) planarity outliers are listed below:

Mol	Chain	Res	Type	Group
1	A	198	PRO	Peptide

5.2 Too-close contacts

In the following table, the Non-H and H(model) columns list the number of non-hydrogen atoms and hydrogen atoms in the chain respectively. The H(added) column lists the number of hydrogen atoms added and optimized by MolProbity. The Clashes column lists the number of clashes within the asymmetric unit, whereas Symm-Clashes lists symmetry-related clashes.

Mol	Chain	Non-H	H(model)	H(added)	Clashes	Symm-Clashes
1	A	1293	0	1255	6	0
1	B	1293	0	1255	17	0
1	C	1293	0	1255	11	0
2	A	10	0	0	1	0
2	B	5	0	0	0	0
2	C	10	0	0	1	0
3	A	15	0	9	0	0
3	B	30	0	18	7	0
4	A	84	0	0	2	0
4	B	66	0	0	0	0
4	C	68	0	0	2	0
All	All	4167	0	3792	32	0

The all-atom clashscore is defined as the number of clashes found per 1000 atoms (including hydrogen atoms). The all-atom clashscore for this structure is 4.

The worst 5 of 32 close contacts within the same asymmetric unit are listed below, sorted by their clash magnitude.

Atom-1	Atom-2	Interatomic distance (Å)	Clash overlap (Å)
3:B:2001[B]:TRP:OXT	1:C:67:ILE:N	2.14	0.76
1:B:66:PRO:CA	3:B:2001[A]:TRP:OXT	2.39	0.70
1:B:66:PRO:HA	3:B:2001[A]:TRP:OXT	1.93	0.69
1:A:68:GLU:OE2	4:A:1262:HOH:O	2.10	0.68
1:A:77:LEU:HD12	1:B:38:GLN:HE22	1.59	0.68

There are no symmetry-related clashes.

5.3 Torsion angles

5.3.1 Protein backbone

In the following table, the Percentiles column shows the percent Ramachandran outliers of the chain as a percentile score with respect to all X-ray entries followed by that with respect to entries of similar resolution.

The Analysed column shows the number of residues for which the backbone conformation was analysed, and the total number of residues.

Mol	Chain	Analysed	Favoured	Allowed	Outliers	Percentiles	
1	A	163/165 (99%)	163 (100%)	0	0	100	100
1	B	163/165 (99%)	158 (97%)	2 (1%)	3 (2%)	8	2
1	C	163/165 (99%)	159 (98%)	1 (1%)	3 (2%)	8	2
All	All	489/495 (99%)	480 (98%)	3 (1%)	6 (1%)	13	4

5 of 6 Ramachandran outliers are listed below:

Mol	Chain	Res	Type
1	C	130	LEU
1	B	38	GLN
1	C	198	PRO
1	B	126	GLU
1	B	129	ASP

5.3.2 Protein sidechains

In the following table, the Percentiles column shows the percent sidechain outliers of the chain as a percentile score with respect to all X-ray entries followed by that with respect to entries of similar resolution.

The Analysed column shows the number of residues for which the sidechain conformation was analysed, and the total number of residues.

Mol	Chain	Analysed	Rotameric	Outliers	Percentiles	
1	A	138/138 (100%)	138 (100%)	0	100	100
1	B	138/138 (100%)	137 (99%)	1 (1%)	84	84
1	C	138/138 (100%)	136 (99%)	2 (1%)	67	64
All	All	414/414 (100%)	411 (99%)	3 (1%)	76	84

All (3) residues with a non-rotameric sidechain are listed below:

Mol	Chain	Res	Type
1	B	36	THR
1	C	36	THR
1	C	62	ARG

Sometimes sidechains can be flipped to improve hydrogen bonding and reduce clashes. All (3) such sidechains are listed below:

Mol	Chain	Res	Type
1	B	38	GLN
1	B	163	GLN
1	C	163	GLN

5.3.3 RNA [i](#)

There are no RNA molecules in this entry.

5.4 Non-standard residues in protein, DNA, RNA chains [i](#)

There are no non-standard protein/DNA/RNA residues in this entry.

5.5 Carbohydrates [i](#)

There are no monosaccharides in this entry.

5.6 Ligand geometry [i](#)

8 ligands are modelled in this entry.

In the following table, the Counts columns list the number of bonds (or angles) for which Mogul statistics could be retrieved, the number of bonds (or angles) that are observed in the model and the number of bonds (or angles) that are defined in the Chemical Component Dictionary. The Link column lists molecule types, if any, to which the group is linked. The Z score for a bond length (or angle) is the number of standard deviations the observed value is removed from the expected value. A bond length (or angle) with $|Z| > 2$ is considered an outlier worth inspection. RMSZ is the root-mean-square of all Z scores of the bond lengths (or angles).

Mol	Type	Chain	Res	Link	Bond lengths			Bond angles		
					Counts	RMSZ	# $ Z > 2$	Counts	RMSZ	# $ Z > 2$
2	SO4	A	1203	-	4,4,4	0.52	0	6,6,6	0.47	0
2	SO4	A	1201	-	4,4,4	0.43	0	6,6,6	0.47	0
3	TRP	B	2001[B]	-	14,16,16	1.01	1 (7%)	13,22,22	0.93	1 (7%)

Mol	Type	Chain	Res	Link	Bond lengths			Bond angles		
					Counts	RMSZ	# Z > 2	Counts	RMSZ	# Z > 2
2	SO4	C	1205	-	4,4,4	0.34	0	6,6,6	0.48	0
3	TRP	A	1001	-	14,16,16	1.02	1 (7%)	13,22,22	1.06	0
3	TRP	B	2001[A]	-	14,16,16	1.03	2 (14%)	13,22,22	1.29	2 (15%)
2	SO4	B	1204	-	4,4,4	0.36	0	6,6,6	0.73	0
2	SO4	C	1202	-	4,4,4	0.44	0	6,6,6	0.07	0

In the following table, the Chirals column lists the number of chiral outliers, the number of chiral centers analysed, the number of these observed in the model and the number defined in the Chemical Component Dictionary. Similar counts are reported in the Torsion and Rings columns. '-' means no outliers of that kind were identified.

Mol	Type	Chain	Res	Link	Chirals	Torsions	Rings
3	TRP	B	2001[B]	-	-	4/7/8/8	0/2/2/2
3	TRP	A	1001	-	-	0/7/8/8	0/2/2/2
3	TRP	B	2001[A]	-	-	1/7/8/8	0/2/2/2

All (4) bond length outliers are listed below:

Mol	Chain	Res	Type	Atoms	Z	Observed(Å)	Ideal(Å)
3	B	2001[B]	TRP	OXT-C	-2.25	1.23	1.30
3	B	2001[A]	TRP	OXT-C	-2.25	1.23	1.30
3	A	1001	TRP	OXT-C	-2.25	1.23	1.30
3	B	2001[A]	TRP	CH2-CZ3	2.08	1.42	1.38

All (3) bond angle outliers are listed below:

Mol	Chain	Res	Type	Atoms	Z	Observed(°)	Ideal(°)
3	B	2001[A]	TRP	OXT-C-O	-2.64	118.08	124.08
3	B	2001[B]	TRP	CH2-CZ2-CE2	-2.09	117.24	120.09
3	B	2001[A]	TRP	CH2-CZ2-CE2	-2.01	117.34	120.09

There are no chirality outliers.

All (5) torsion outliers are listed below:

Mol	Chain	Res	Type	Atoms
3	B	2001[B]	TRP	OXT-C-CA-N
3	B	2001[B]	TRP	OXT-C-CA-CB
3	B	2001[B]	TRP	O-C-CA-CB
3	B	2001[B]	TRP	O-C-CA-N
3	B	2001[A]	TRP	CA-CB-CG-CD1

There are no ring outliers.

4 monomers are involved in 9 short contacts:

Mol	Chain	Res	Type	Clashes	Symm-Clashes
2	A	1203	SO4	1	0
3	B	2001[B]	TRP	4	0
2	C	1205	SO4	1	0
3	B	2001[A]	TRP	3	0

5.7 Other polymers [i](#)

There are no such residues in this entry.

5.8 Polymer linkage issues [i](#)

There are no chain breaks in this entry.

6 Fit of model and data ⓘ

6.1 Protein, DNA and RNA chains ⓘ

Unable to reproduce the depositors R factor - this section is therefore empty.

6.2 Non-standard residues in protein, DNA, RNA chains ⓘ

Unable to reproduce the depositors R factor - this section is therefore empty.

6.3 Carbohydrates ⓘ

Unable to reproduce the depositors R factor - this section is therefore empty.

6.4 Ligands ⓘ

Unable to reproduce the depositors R factor - this section is therefore empty.

6.5 Other polymers ⓘ

Unable to reproduce the depositors R factor - this section is therefore empty.