



wwPDB X-ray Structure Validation Summary Report ⓘ

Oct 19, 2024 – 10:57 AM EDT

PDB ID : 1ALX
Title : GRAMICIDIN D FROM BACILLUS BREVIS (METHANOL SOLVATE)
Authors : Burkhart, B.M.; Langs, D.A.; Smith, G.D.; Courseille, C.; Precigoux, G.;
Hospital, M.; Pangborn, W.A.; Duax, W.L.
Deposited on : 1997-06-05
Resolution : 1.20 Å(reported)

This is a wwPDB X-ray Structure Validation Summary Report for a publicly released PDB entry.

We welcome your comments at validation@mail.wwpdb.org

A user guide is available at

<https://www.wwpdb.org/validation/2017/XrayValidationReportHelp>

with specific help available everywhere you see the ⓘ symbol.

The types of validation reports are described at

<http://www.wwpdb.org/validation/2017/FAQs#types>.

The following versions of software and data (see [references ⓘ](#)) were used in the production of this report:

MolProbity	:	4.02b-467
Mogul	:	2022.3.0, CSD as543be (2022)
Xtriage (Phenix)	:	1.20.1
EDS	:	3.0
Percentile statistics	:	20231227.v01 (using entries in the PDB archive December 27th 2023)
CCP4	:	9.0.003 (Gargrove)
Density-Fitness	:	1.0.11
Ideal geometry (proteins)	:	Engh & Huber (2001)
Ideal geometry (DNA, RNA)	:	Parkinson et al. (1996)
Validation Pipeline (wwPDB-VP)	:	2.39

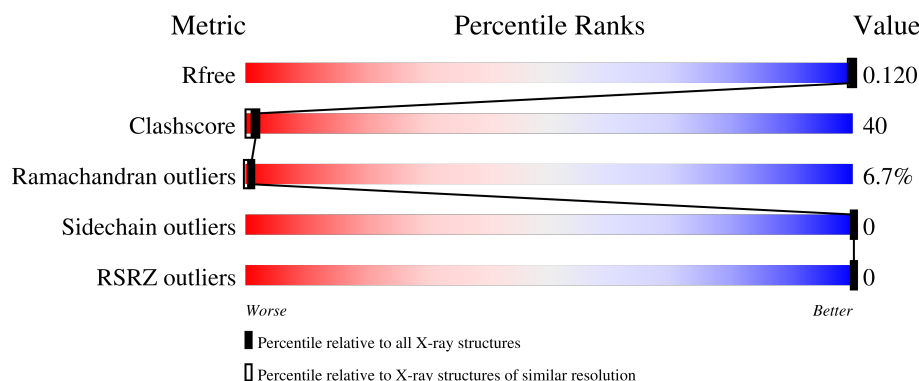
1 Overall quality at a glance

The following experimental techniques were used to determine the structure:

X-RAY DIFFRACTION

The reported resolution of this entry is 1.20 Å.

Percentile scores (ranging between 0-100) for global validation metrics of the entry are shown in the following graphic. The table shows the number of entries on which the scores are based.



Metric	Whole archive (#Entries)	Similar resolution (#Entries, resolution range(Å))
R_{free}	164625	1079 (1.20-1.20)
Clashscore	180529	1183 (1.20-1.20)
Ramachandran outliers	177936	1146 (1.20-1.20)
Sidechain outliers	177891	1146 (1.20-1.20)
RSRZ outliers	164620	1078 (1.20-1.20)

The table below summarises the geometric issues observed across the polymeric chains and their fit to the electron density. The red, orange, yellow and green segments of the lower bar indicate the fraction of residues that contain outliers for ≥ 3 , 2, 1 and 0 types of geometric quality criteria respectively. A grey segment represents the fraction of residues that are not modelled. The numeric value for each fraction is indicated below the corresponding segment, with a dot representing fractions $\leq 5\%$. The upper red bar (where present) indicates the fraction of residues that have poor fit to the electron density. The numeric value is given above the bar.

Mol	Chain	Length	Quality of chain
1	A	17	 65% 29% 6%
2	B	16	 50% 44% 6%

The following table lists non-polymeric compounds, carbohydrate monomers and non-standard residues in protein, DNA, RNA chains that are outliers for geometric or electron-density-fit criteria:

Mol	Type	Chain	Res	Chirality	Geometry	Clashes	Electron density
2	DLE	B	4	-	-	X	-
3	MOH	B	510	-	-	X	-

2 Entry composition [i](#)

There are 3 unique types of molecules in this entry. The entry contains 866 atoms, of which 483 are hydrogens and 0 are deuteriums.

In the tables below, the ZeroOcc column contains the number of atoms modelled with zero occupancy, the AltConf column contains the number of residues with at least one atom in alternate conformation and the Trace column contains the number of residues modelled with at most 2 atoms.

- Molecule 1 is a protein called GRAMICIDIN A.

Mol	Chain	Residues	Atoms					ZeroOcc	AltConf	Trace
1	A	16	Total	C	H	N	O	0	3	0
			327	115	168	23	21			

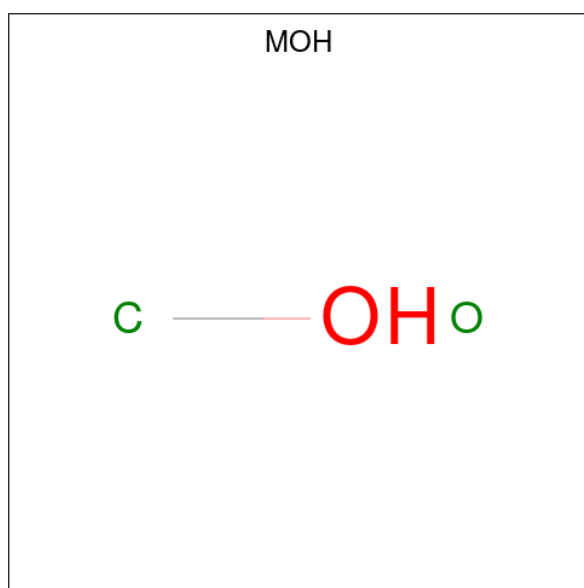
There is a discrepancy between the modelled and reference sequences:

Chain	Residue	Modelled	Actual	Comment	Reference
A	11	TYR	TRP	microheterogeneity	NOR NOR00243

- Molecule 2 is a protein called GRAMICIDIN A.

Mol	Chain	Residues	Atoms					ZeroOcc	AltConf	Trace
2	B	16	Total	C	H	N	O	0	4	0
			329	113	175	22	19			

- Molecule 3 is METHANOL (three-letter code: MOH) (formula: CH₄O).



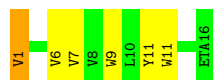
Mol	Chain	Residues	Atoms				ZeroOcc	AltConf
3	A	1	Total 6	C 1	H 4	O 1	0	0
3	A	1	Total 6	C 1	H 4	O 1	0	0
3	A	1	Total 6	C 1	H 4	O 1	0	0
3	A	1	Total 6	C 1	H 4	O 1	0	0
3	A	1	Total 6	C 1	H 4	O 1	0	0
3	A	1	Total 12	C 2	H 8	O 2	0	1
3	A	1	Total 12	C 2	H 8	O 2	0	1
3	A	1	Total 12	C 2	H 8	O 2	0	1
3	A	1	Total 24	C 4	H 16	O 4	0	1
3	B	1	Total 12	C 2	H 8	O 2	0	1
3	B	1	Total 6	C 1	H 4	O 1	0	0
3	B	1	Total 6	C 1	H 4	O 1	0	0
3	B	1	Total 6	C 1	H 4	O 1	0	0
3	B	1	Total 6	C 1	H 4	O 1	0	0
3	B	1	Total 6	C 1	H 4	O 1	0	1
3	B	1	Total 12	C 2	H 8	O 2	0	1
3	B	1	Total 12	C 2	H 8	O 2	0	1
3	B	1	Total 12	C 2	H 8	O 2	0	1
3	B	1	Total 12	C 2	H 8	O 2	0	1
3	B	1	Total 12	C 2	H 8	O 2	0	1
3	B	1	Total 30	C 5	H 20	O 5	0	1

3 Residue-property plots [i](#)

These plots are drawn for all protein, RNA, DNA and oligosaccharide chains in the entry. The first graphic for a chain summarises the proportions of the various outlier classes displayed in the second graphic. The second graphic shows the sequence view annotated by issues in geometry and electron density. Residues are color-coded according to the number of geometric quality criteria for which they contain at least one outlier: green = 0, yellow = 1, orange = 2 and red = 3 or more. A red dot above a residue indicates a poor fit to the electron density ($RSRZ > 2$). Stretches of 2 or more consecutive residues without any outlier are shown as a green connector. Residues present in the sample, but not in the model, are shown in grey.

- Molecule 1: GRAMICIDIN A

Chain A: 



- Molecule 2: GRAMICIDIN A

Chain B: 



4 Data and refinement statistics

Property	Value	Source
Space group	P 1 21 1	Depositor
Cell constants a, b, c, α , β , γ	14.91Å 26.01Å 31.91Å 90.00° 92.03° 90.00°	Depositor
Resolution (Å)	100.00 – 1.20 31.89 – 1.20	Depositor EDS
% Data completeness (in resolution range)	99.9 (100.00-1.20) 99.9 (31.89-1.20)	Depositor EDS
R_{merge}	(Not available)	Depositor
R_{sym}	(Not available)	Depositor
$\langle I/\sigma(I) \rangle$ ¹	32.69 (at 1.20Å)	Xtriage
Refinement program	SHELXL-97	Depositor
R, R_{free}	0.102 , 0.168 0.114 , 0.120	Depositor DCC
R_{free} test set	376 reflections (4.87%)	wwPDB-VP
Wilson B-factor (Å ²)	7.2	Xtriage
Anisotropy	0.235	Xtriage
Bulk solvent k_{sol} (e/Å ³), B_{sol} (Å ²)	0.27 , 101.2	EDS
L-test for twinning ²	$\langle L \rangle = 0.49$, $\langle L^2 \rangle = 0.33$	Xtriage
Estimated twinning fraction	0.055 for h,-k,-l	Xtriage
F_o, F_c correlation	0.98	EDS
Total number of atoms	866	wwPDB-VP
Average B, all atoms (Å ²)	13.0	wwPDB-VP

Xtriage's analysis on translational NCS is as follows: *The analyses of the Patterson function reveals a significant off-origin peak that is 21.09 % of the origin peak, indicating pseudo-translational symmetry. The chance of finding a peak of this or larger height randomly in a structure without pseudo-translational symmetry is equal to 7.5489e-03. The detected translational NCS is most likely also responsible for the elevated intensity ratio.*

¹ Intensities estimated from amplitudes.

² Theoretical values of $\langle |L| \rangle$, $\langle L^2 \rangle$ for acentric reflections are 0.5, 0.333 respectively for untwinned datasets, and 0.375, 0.2 for perfectly twinned datasets.

5 Model quality

5.1 Standard geometry

Bond lengths and bond angles in the following residue types are not validated in this section: DLE, FVA, DVA, ETA, MOH

The Z score for a bond length (or angle) is the number of standard deviations the observed value is removed from the expected value. A bond length (or angle) with $|Z| > 5$ is considered an outlier worth inspection. RMSZ is the root-mean-square of all Z scores of the bond lengths (or angles).

Mol	Chain	Bond lengths		Bond angles	
		RMSZ	$\# Z > 5$	RMSZ	$\# Z > 5$
1	A	0.74	0/96	1.47	0/122
2	B	0.83	0/78	1.43	0/100
All	All	0.79	0/174	1.45	0/222

There are no bond length outliers.

There are no bond angle outliers.

There are no chirality outliers.

There are no planarity outliers.

5.2 Too-close contacts

In the following table, the Non-H and H(model) columns list the number of non-hydrogen atoms and hydrogen atoms in the chain respectively. The H(added) column lists the number of hydrogen atoms added and optimized by MolProbity. The Clashes column lists the number of clashes within the asymmetric unit, whereas Symm-Clashes lists symmetry-related clashes.

Mol	Chain	Non-H	H(model)	H(added)	Clashes	Symm-Clashes
1	A	159	168	142	14	0
2	B	154	175	155	18	1
3	A	30	60	0	7	1
3	B	40	80	0	9	0
All	All	383	483	297	27	1

The all-atom clashscore is defined as the number of clashes found per 1000 atoms (including hydrogen atoms). The all-atom clashscore for this structure is 40.

The worst 5 of 27 close contacts within the same asymmetric unit are listed below, sorted by their clash magnitude.

Atom-1	Atom-2	Interatomic distance (Å)	Clash overlap (Å)
1:A:6:DVA:HG22	1:A:7[B]:VAL:HG13	1.63	0.81
2:B:6[A]:DVA:HG12	3:B:510:MOH:C	2.16	0.76
1:A:11[A]:TYR:CD2	2:B:4:DLE:CD1	2.72	0.73
2:B:6[B]:DVA:HG13	2:B:7:VAL:HG12	1.70	0.73
1:A:11[A]:TYR:HD2	2:B:4:DLE:CD1	2.04	0.71

All (1) symmetry-related close contacts are listed below. The label for Atom-2 includes the symmetry operator and encoded unit-cell translations to be applied.

Atom-1	Atom-2	Interatomic distance (Å)	Clash overlap (Å)
2:B:11:TRP:HE1	3:A:519[A]:MOH:HO[2_654]	1.26	0.34

5.3 Torsion angles [i](#)

5.3.1 Protein backbone [i](#)

In the following table, the Percentiles column shows the percent Ramachandran outliers of the chain as a percentile score with respect to all X-ray entries followed by that with respect to entries of similar resolution.

The Analysed column shows the number of residues for which the backbone conformation was analysed, and the total number of residues.

Mol	Chain	Analysed	Favoured	Allowed	Outliers	Percentiles	
1	A	8/17 (47%)	5 (62%)	3 (38%)	0	100	100
2	B	8/16 (50%)	4 (50%)	3 (38%)	1 (12%)	0	0
All	All	16/33 (48%)	9 (56%)	6 (38%)	1 (6%)	1	0

All (1) Ramachandran outliers are listed below:

Mol	Chain	Res	Type
2	B	7	VAL

5.3.2 Protein sidechains [i](#)

In the following table, the Percentiles column shows the percent sidechain outliers of the chain as a percentile score with respect to all X-ray entries followed by that with respect to entries of similar resolution.

The Analysed column shows the number of residues for which the sidechain conformation was

analysed, and the total number of residues.

Mol	Chain	Analysed	Rotameric	Outliers	Percentiles	
1	A	7/6 (117%)	7 (100%)	0	100	100
2	B	5/5 (100%)	5 (100%)	0	100	100
All	All	12/11 (109%)	12 (100%)	0	100	100

There are no protein residues with a non-rotameric sidechain to report.

Sometimes sidechains can be flipped to improve hydrogen bonding and reduce clashes. There are no such sidechains identified.

5.3.3 RNA ⓘ

There are no RNA molecules in this entry.

5.4 Non-standard residues in protein, DNA, RNA chains ⓘ

23 non-standard protein/DNA/RNA residues are modelled in this entry.

In the following table, the Counts columns list the number of bonds (or angles) for which Mogul statistics could be retrieved, the number of bonds (or angles) that are observed in the model and the number of bonds (or angles) that are defined in the Chemical Component Dictionary. The Link column lists molecule types, if any, to which the group is linked. The Z score for a bond length (or angle) is the number of standard deviations the observed value is removed from the expected value. A bond length (or angle) with $|Z| > 2$ is considered an outlier worth inspection. RMSZ is the root-mean-square of all Z scores of the bond lengths (or angles).

Mol	Type	Chain	Res	Link	Bond lengths			Bond angles		
					Counts	RMSZ	$\# Z > 2$	Counts	RMSZ	$\# Z > 2$
1	FVA	A	1	1	7,8,9	0.75	0	9,9,11	1.97	3 (33%)
1	ETA	A	16[C]	1	3,3,3	0.50	0	2,2,2	0.14	0
1	ETA	A	16[A]	1	3,3,3	0.56	0	2,2,2	0.63	0
2	ETA	B	16[A]	2	3,3,3	0.35	0	2,2,2	0.38	0
2	ETA	B	16[B]	2	3,3,3	0.39	0	2,2,2	0.74	0
2	ETA	B	16[C]	2	3,3,3	0.53	0	2,2,2	0.92	0
1	ETA	A	16[B]	1	3,3,3	0.47	0	2,2,2	0.75	0
2	FVA	B	1	2	7,8,9	0.72	0	9,9,11	1.22	1 (11%)

In the following table, the Chirals column lists the number of chiral outliers, the number of chiral centers analysed, the number of these observed in the model and the number defined in the Chemical Component Dictionary. Similar counts are reported in the Torsion and Rings columns. '-' means no outliers of that kind were identified.

Mol	Type	Chain	Res	Link	Chirals	Torsions	Rings
1	FVA	A	1	1	-	1/7/9/11	-
1	ETA	A	16[C]	1	-	0/1/1/1	-
1	ETA	A	16[A]	1	-	1/1/1/1	-
2	ETA	B	16[A]	2	-	0/1/1/1	-
2	ETA	B	16[B]	2	-	0/1/1/1	-
2	ETA	B	16[C]	2	-	1/1/1/1	-
1	ETA	A	16[B]	1	-	1/1/1/1	-
2	FVA	B	1	2	-	0/7/9/11	-

There are no bond length outliers.

All (4) bond angle outliers are listed below:

Mol	Chain	Res	Type	Atoms	Z	Observed(°)	Ideal(°)
1	A	1	FVA	CB-CA-C	-3.85	107.99	112.96
2	B	1	FVA	C-CA-N	-2.79	105.41	109.80
1	A	1	FVA	CG1-CB-CA	2.72	115.34	111.18
1	A	1	FVA	O-C-CA	-2.40	118.51	124.86

There are no chirality outliers.

All (4) torsion outliers are listed below:

Mol	Chain	Res	Type	Atoms
1	A	1	FVA	O-C-CA-CB
2	B	16[C]	ETA	O-C-CA-N
1	A	16[A]	ETA	O-C-CA-N
1	A	16[B]	ETA	O-C-CA-N

There are no ring outliers.

1 monomer is involved in 1 short contact:

Mol	Chain	Res	Type	Clashes	Symm-Clashes
1	A	1	FVA	1	0

5.5 Carbohydrates [i](#)

There are no oligosaccharides in this entry.

5.6 Ligand geometry [i](#)

35 ligands are modelled in this entry.

In the following table, the Counts columns list the number of bonds (or angles) for which Mogul statistics could be retrieved, the number of bonds (or angles) that are observed in the model and the number of bonds (or angles) that are defined in the Chemical Component Dictionary. The Link column lists molecule types, if any, to which the group is linked. The Z score for a bond length (or angle) is the number of standard deviations the observed value is removed from the expected value. A bond length (or angle) with $|Z| > 2$ is considered an outlier worth inspection. RMSZ is the root-mean-square of all Z scores of the bond lengths (or angles).

Mol	Type	Chain	Res	Link	Bond lengths			Bond angles		
					Counts	RMSZ	$\# Z > 2$	Counts	RMSZ	$\# Z > 2$
3	MOH	A	519[D]	-	1,1,1	0.31	0	-		
3	MOH	A	515[A]	-	1,1,1	0.28	0	-		
3	MOH	A	519[A]	-	1,1,1	0.30	0	-		
3	MOH	B	517[A]	-	1,1,1	0.18	0	-		
3	MOH	A	518[A]	-	1,1,1	0.32	0	-		
3	MOH	A	506	-	1,1,1	0.39	0	-		
3	MOH	B	511[A]	-	1,1,1	0.31	0	-		
3	MOH	A	515[B]	-	1,1,1	0.52	0	-		
3	MOH	A	519[B]	-	1,1,1	0.25	0	-		
3	MOH	A	501	-	1,1,1	0.40	0	-		
3	MOH	A	516[C]	-	1,1,1	0.35	0	-		
3	MOH	B	517[B]	-	1,1,1	0.38	0	-		
3	MOH	A	518[B]	-	1,1,1	0.30	0	-		
3	MOH	B	503[A]	-	1,1,1	0.35	0	-		
3	MOH	B	513[A]	-	1,1,1	0.28	0	-		
3	MOH	B	520[E]	-	1,1,1	0.26	0	-		
3	MOH	A	505	-	1,1,1	0.35	0	-		
3	MOH	B	510	-	1,1,1	0.09	0	-		
3	MOH	B	503[B]	-	1,1,1	0.24	0	-		
3	MOH	B	520[C]	-	1,1,1	0.16	0	-		
3	MOH	B	514[A]	-	1,1,1	0.34	0	-		
3	MOH	B	507	-	1,1,1	0.17	0	-		
3	MOH	B	513[B]	-	1,1,1	0.27	0	-		
3	MOH	A	516[A]	-	1,1,1	0.01	0	-		
3	MOH	B	514[B]	-	1,1,1	0.20	0	-		
3	MOH	B	520[D]	-	1,1,1	0.08	0	-		
3	MOH	B	512[A]	-	1,1,1	0.25	0	-		
3	MOH	B	520[A]	-	1,1,1	0.28	0	-		
3	MOH	A	502	-	1,1,1	0.54	0	-		
3	MOH	B	520[B]	-	1,1,1	0.25	0	-		
3	MOH	A	508	-	1,1,1	0.32	0	-		
3	MOH	B	509	-	1,1,1	0.38	0	-		
3	MOH	B	512[B]	-	1,1,1	0.21	0	-		
3	MOH	B	504	-	1,1,1	0.36	0	-		
3	MOH	A	519[C]	-	1,1,1	0.42	0	-		

There are no bond length outliers.

There are no bond angle outliers.

There are no chirality outliers.

There are no torsion outliers.

There are no ring outliers.

14 monomers are involved in 15 short contacts:

Mol	Chain	Res	Type	Clashes	Symm-Clashes
3	A	515[A]	MOH	1	0
3	A	519[A]	MOH	0	1
3	A	518[A]	MOH	1	0
3	A	506	MOH	1	0
3	B	511[A]	MOH	1	0
3	A	515[B]	MOH	1	0
3	A	516[C]	MOH	1	0
3	A	505	MOH	1	0
3	B	510	MOH	5	0
3	A	516[A]	MOH	1	0
3	B	520[A]	MOH	1	0
3	B	520[B]	MOH	1	0
3	B	504	MOH	1	0
3	A	519[C]	MOH	1	0

5.7 Other polymers [i](#)

There are no such residues in this entry.

5.8 Polymer linkage issues [i](#)

There are no chain breaks in this entry.

6 Fit of model and data [i](#)

6.1 Protein, DNA and RNA chains [i](#)

In the following table, the column labelled ‘#RSRZ> 2’ contains the number (and percentage) of RSRZ outliers, followed by percent RSRZ outliers for the chain as percentile scores relative to all X-ray entries and entries of similar resolution. The OWAB column contains the minimum, median, 95th percentile and maximum values of the occupancy-weighted average B-factor per residue. The column labelled ‘Q< 0.9’ lists the number of (and percentage) of residues with an average occupancy less than 0.9.

Mol	Chain	Analysed	<RSRZ>	#RSRZ>2	OWAB(Å ²)	Q<0.9
1	A	7/17 (41%)	-0.59	0 100 100	6, 8, 12, 12	1 (14%)
2	B	8/16 (50%)	-0.74	0 100 100	6, 9, 10, 11	0
All	All	15/33 (45%)	-0.67	0 100 100	6, 9, 12, 12	1 (6%)

There are no RSRZ outliers to report.

6.2 Non-standard residues in protein, DNA, RNA chains [i](#)

In the following table, the Atoms column lists the number of modelled atoms in the group and the number defined in the chemical component dictionary. The B-factors column lists the minimum, median, 95th percentile and maximum values of B factors of atoms in the group. The column labelled ‘Q< 0.9’ lists the number of atoms with occupancy less than 0.9.

Mol	Type	Chain	Res	Atoms	RSCC	RSR	B-factors(Å ²)	Q<0.9
1	ETA	A	16[A]	4/4	0.91	0.09	7,10,14,21	10
1	ETA	A	16[B]	4/4	0.91	0.09	7,10,10,16	10
1	ETA	A	16[C]	4/4	0.91	0.09	7,9,12,16	10
2	ETA	B	16[A]	4/4	0.93	0.06	7,9,11,16	10
2	ETA	B	16[B]	4/4	0.93	0.06	7,9,9,13	10
2	ETA	B	16[C]	4/4	0.93	0.06	7,10,13,20	10
2	FVA	B	1	9/10	0.98	0.03	6,7,13,13	0
2	DVA	B	6[A]	7/8	0.98	0.06	6,13,24,24	10
2	DVA	B	6[B]	7/8	0.98	0.06	6,12,18,18	10
2	DVA	B	8[A]	7/8	0.98	0.06	4,7,18,18	10
2	DVA	B	8[B]	7/8	0.98	0.06	4,8,16,16	10
2	DLE	B	10[A]	8/9	0.98	0.05	5,6,10,10	13
2	DLE	B	10[B]	8/9	0.98	0.05	5,6,17,17	13
1	DLE	A	4	8/9	0.98	0.04	6,8,19,19	0
1	DLE	A	10	8/9	0.98	0.04	6,9,21,21	0
1	DLE	A	12	8/9	0.98	0.03	4,5,13,13	0

Continued on next page...

Continued from previous page...

Mol	Type	Chain	Res	Atoms	RSCC	RSR	B-factors(\AA^2)	Q<0.9
2	DLE	B	4	8/9	0.99	0.03	5,7,17,17	0
1	DVA	A	8	7/8	0.99	0.03	6,10,17,17	0
2	DLE	B	12	8/9	0.99	0.03	4,8,22,22	0
2	DLE	B	14	8/9	0.99	0.03	4,9,19,19	0
1	FVA	A	1	9/10	0.99	0.04	7,10,19,19	0
1	DVA	A	6	7/8	0.99	0.03	4,7,13,13	0
1	DLE	A	14	8/9	0.99	0.02	5,6,11,11	0

6.3 Carbohydrates [i](#)

There are no monosaccharides in this entry.

6.4 Ligands [i](#)

In the following table, the Atoms column lists the number of modelled atoms in the group and the number defined in the chemical component dictionary. The B-factors column lists the minimum, median, 95th percentile and maximum values of B factors of atoms in the group. The column labelled 'Q< 0.9' lists the number of atoms with occupancy less than 0.9.

Mol	Type	Chain	Res	Atoms	RSCC	RSR	B-factors(\AA^2)	Q<0.9
3	MOH	A	518[A]	2/2	0.58	0.15	26,39,39,42	6
3	MOH	A	518[B]	2/2	0.58	0.15	25,38,38,38	6
3	MOH	A	515[A]	2/2	0.78	0.12	12,18,20,30	6
3	MOH	A	515[B]	2/2	0.78	0.12	12,18,22,22	6
3	MOH	B	513[A]	2/2	0.81	0.13	19,29,29,31	6
3	MOH	B	513[B]	2/2	0.81	0.13	20,30,32,32	6
3	MOH	A	506	2/2	0.84	0.14	31,47,48,48	0
3	MOH	B	511[A]	2/2	0.87	0.10	26,39,39,40	6
3	MOH	B	517[A]	2/2	0.87	0.20	21,32,32,43	6
3	MOH	B	517[B]	2/2	0.87	0.20	31,47,47,52	6
3	MOH	B	509	2/2	0.88	0.12	31,47,47,50	0
3	MOH	A	508	2/2	0.90	0.19	21,32,33,33	0
3	MOH	B	512[A]	2/2	0.91	0.12	12,18,20,20	6
3	MOH	B	512[B]	2/2	0.91	0.12	15,23,23,28	6
3	MOH	A	505	2/2	0.91	0.11	20,30,30,34	0
3	MOH	B	503[A]	2/2	0.94	0.08	12,18,25,25	6
3	MOH	B	503[B]	2/2	0.94	0.08	23,34,34,43	6
3	MOH	B	520[A]	2/2	0.94	0.17	7,11,11,16	6
3	MOH	B	520[B]	2/2	0.94	0.17	8,12,12,14	6
3	MOH	B	520[C]	2/2	0.94	0.17	11,17,18,18	6
3	MOH	B	520[D]	2/2	0.94	0.17	11,16,16,19	6

Continued on next page...

Continued from previous page...

Mol	Type	Chain	Res	Atoms	RSCC	RSR	B-factors(\AA^2)	Q<0.9
3	MOH	B	520[E]	2/2	0.94	0.17	8,13,17,17	6
3	MOH	B	504	2/2	0.95	0.13	19,28,28,34	0
3	MOH	B	514[A]	2/2	0.95	0.08	11,17,17,17	6
3	MOH	B	514[B]	2/2	0.95	0.08	15,23,23,31	6
3	MOH	A	516[A]	2/2	0.95	0.14	11,17,17,19	6
3	MOH	A	516[C]	2/2	0.95	0.14	9,14,15,23	6
3	MOH	B	510	2/2	0.96	0.21	8,13,14,14	6
3	MOH	A	501	2/2	0.97	0.05	13,20,30,30	0
3	MOH	A	519[D]	2/2	0.98	0.23	14,22,22,22	6
3	MOH	A	519[A]	2/2	0.98	0.23	5,8,8,8	6
3	MOH	A	519[B]	2/2	0.98	0.23	18,27,27,35	6
3	MOH	A	519[C]	2/2	0.98	0.23	21,32,34,34	6
3	MOH	A	502	2/2	0.99	0.03	12,18,18,18	0
3	MOH	B	507	2/2	0.99	0.04	14,22,22,22	0

6.5 Other polymers [i](#)

There are no such residues in this entry.