



## wwPDB EM Validation Summary Report ⓘ

Nov 10, 2024 – 12:26 am GMT

PDB ID : 8AFH  
EMDB ID : EMD-15398  
Title : Cryo-EM structure of crescentin filaments (stutter mutant, C2, symmetry and small box)  
Authors : Liu, Y.; Lowe, J.  
Deposited on : 2022-07-18  
Resolution : 3.90 Å(reported)

This is a wwPDB EM Validation Summary Report for a publicly released PDB entry.

We welcome your comments at [validation@mail.wwpdb.org](mailto:validation@mail.wwpdb.org)

A user guide is available at

<https://www.wwpdb.org/validation/2017/EMValidationReportHelp>  
with specific help available everywhere you see the ⓘ symbol.

The types of validation reports are described at

<http://www.wwpdb.org/validation/2017/FAQs#types>.

---

The following versions of software and data (see [references ⓘ](#)) were used in the production of this report:

EMDB validation analysis : 0.0.1.dev113  
MolProbity : 4.02b-467  
Percentile statistics : 20231227.v01 (using entries in the PDB archive December 27th 2023)  
MapQ : 1.9.13  
Ideal geometry (proteins) : Engh & Huber (2001)  
Ideal geometry (DNA, RNA) : Parkinson et al. (1996)  
Validation Pipeline (wwPDB-VP) : 2.39

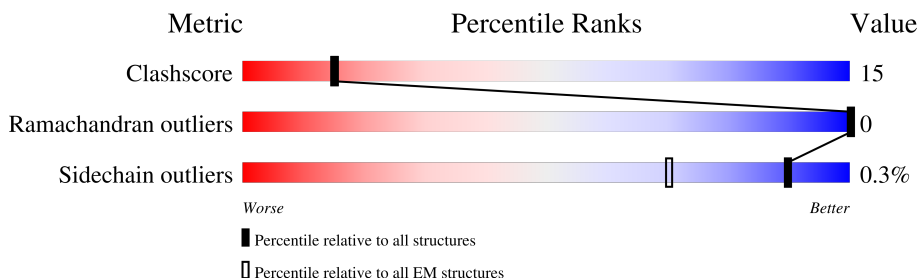
# 1 Overall quality at a glance

The following experimental techniques were used to determine the structure:

*ELECTRON MICROSCOPY*

The reported resolution of this entry is 3.90 Å.

Percentile scores (ranging between 0-100) for global validation metrics of the entry are shown in the following graphic. The table shows the number of entries on which the scores are based.















Metric	Whole archive (#Entries)	EM structures (#Entries)
Clashscore	210492	15764
Ramachandran outliers	207382	16835
Sidechain outliers	206894	16415

The table below summarises the geometric issues observed across the polymeric chains and their fit to the map. The red, orange, yellow and green segments of the bar indicate the fraction of residues that contain outliers for  $\geq 3$ , 2, 1 and 0 types of geometric quality criteria respectively. A grey segment represents the fraction of residues that are not modelled. The numeric value for each fraction is indicated below the corresponding segment, with a dot representing fractions  $\leq 5\%$ . The upper red bar (where present) indicates the fraction of residues that have poor fit to the EM map (all-atom inclusion  $< 40\%$ ). The numeric value is given above the bar.

Mol	Chain	Length	Quality of chain
1	A	460	 17% 79%
1	B	460	 15% 6% 79%
1	E	460	 14% 83%
1	F	460	 15% 83%
1	G	460	 7% 91%
1	H	460	 7% 92%
1	K	460	 17% 79%
1	L	460	 15% 6% 79%

*Continued on next page...*

*Continued from previous page...*

Mol	Chain	Length	Quality of chain
1	O	460	 14% 83%
1	P	460	 15% 83%
1	Q	460	 7% 91%
1	R	460	 7% 92%
2	C	907	 8% 5% 88%
2	D	907	 8% 5% 88%
2	I	907	 8% 88%
2	J	907	 8% 5% 88%
2	M	907	 7% 5% 88%
2	N	907	 8% 5% 88%
2	S	907	 8% 88%
2	T	907	 8% 88%

## 2 Entry composition

There are 2 unique types of molecules in this entry. The entry contains 13570 atoms, of which 0 are hydrogens and 0 are deuteriums.

In the tables below, the AltConf column contains the number of residues with at least one atom in alternate conformation and the Trace column contains the number of residues modelled with at most 2 atoms.

- Molecule 1 is a protein called Crescentin.

Mol	Chain	Residues	Atoms					AltConf	Trace
1	A	96	Total	C	N	O	S	0	0
			739	438	152	148	1		
1	B	97	Total	C	N	O	S	0	0
			747	443	153	149	2		
1	E	79	Total	C	N	O		0	0
			600	359	114	127			
1	F	79	Total	C	N	O		0	0
			600	359	114	127			
1	G	43	Total	C	N	O		0	0
			333	197	69	67			
1	H	39	Total	C	N	O		0	0
			299	177	61	61			
1	K	96	Total	C	N	O	S	0	0
			739	438	152	148	1		
1	L	97	Total	C	N	O	S	0	0
			747	443	153	149	2		
1	O	79	Total	C	N	O		0	0
			600	359	114	127			
1	P	79	Total	C	N	O		0	0
			600	359	114	127			
1	Q	43	Total	C	N	O		0	0
			333	197	69	67			
1	R	39	Total	C	N	O		0	0
			299	177	61	61			

There are 36 discrepancies between the modelled and reference sequences:

Chain	Residue	Modelled	Actual	Comment	Reference
A	406	SER	-	insertion	UNP A0A8F8EC09
A	407	ALA	-	insertion	UNP A0A8F8EC09
A	408	THR	-	insertion	UNP A0A8F8EC09
B	406	SER	-	insertion	UNP A0A8F8EC09
B	407	ALA	-	insertion	UNP A0A8F8EC09
B	408	THR	-	insertion	UNP A0A8F8EC09

*Continued on next page...*

*Continued from previous page...*

Chain	Residue	Modelled	Actual	Comment	Reference
E	406	SER	-	insertion	UNP A0A8F8EC09
E	407	ALA	-	insertion	UNP A0A8F8EC09
E	408	THR	-	insertion	UNP A0A8F8EC09
F	406	SER	-	insertion	UNP A0A8F8EC09
F	407	ALA	-	insertion	UNP A0A8F8EC09
F	408	THR	-	insertion	UNP A0A8F8EC09
G	406	SER	-	insertion	UNP A0A8F8EC09
G	407	ALA	-	insertion	UNP A0A8F8EC09
G	408	THR	-	insertion	UNP A0A8F8EC09
H	406	SER	-	insertion	UNP A0A8F8EC09
H	407	ALA	-	insertion	UNP A0A8F8EC09
H	408	THR	-	insertion	UNP A0A8F8EC09
K	406	SER	-	insertion	UNP A0A8F8EC09
K	407	ALA	-	insertion	UNP A0A8F8EC09
K	408	THR	-	insertion	UNP A0A8F8EC09
L	406	SER	-	insertion	UNP A0A8F8EC09
L	407	ALA	-	insertion	UNP A0A8F8EC09
L	408	THR	-	insertion	UNP A0A8F8EC09
O	406	SER	-	insertion	UNP A0A8F8EC09
O	407	ALA	-	insertion	UNP A0A8F8EC09
O	408	THR	-	insertion	UNP A0A8F8EC09
P	406	SER	-	insertion	UNP A0A8F8EC09
P	407	ALA	-	insertion	UNP A0A8F8EC09
P	408	THR	-	insertion	UNP A0A8F8EC09
Q	406	SER	-	insertion	UNP A0A8F8EC09
Q	407	ALA	-	insertion	UNP A0A8F8EC09
Q	408	THR	-	insertion	UNP A0A8F8EC09
R	406	SER	-	insertion	UNP A0A8F8EC09
R	407	ALA	-	insertion	UNP A0A8F8EC09
R	408	THR	-	insertion	UNP A0A8F8EC09

- Molecule 2 is a protein called Crescentus-specific megabody MB13.

Mol	Chain	Residues	Atoms					AltConf	Trace
2	D	112	Total	C	N	O	S	0	0
			869	539	155	170	5		
2	C	112	Total	C	N	O	S	0	0
			869	539	155	170	5		
2	I	111	Total	C	N	O	S	0	0
			860	534	154	167	5		
2	J	112	Total	C	N	O	S	0	0
			869	539	155	170	5		

*Continued on next page...*

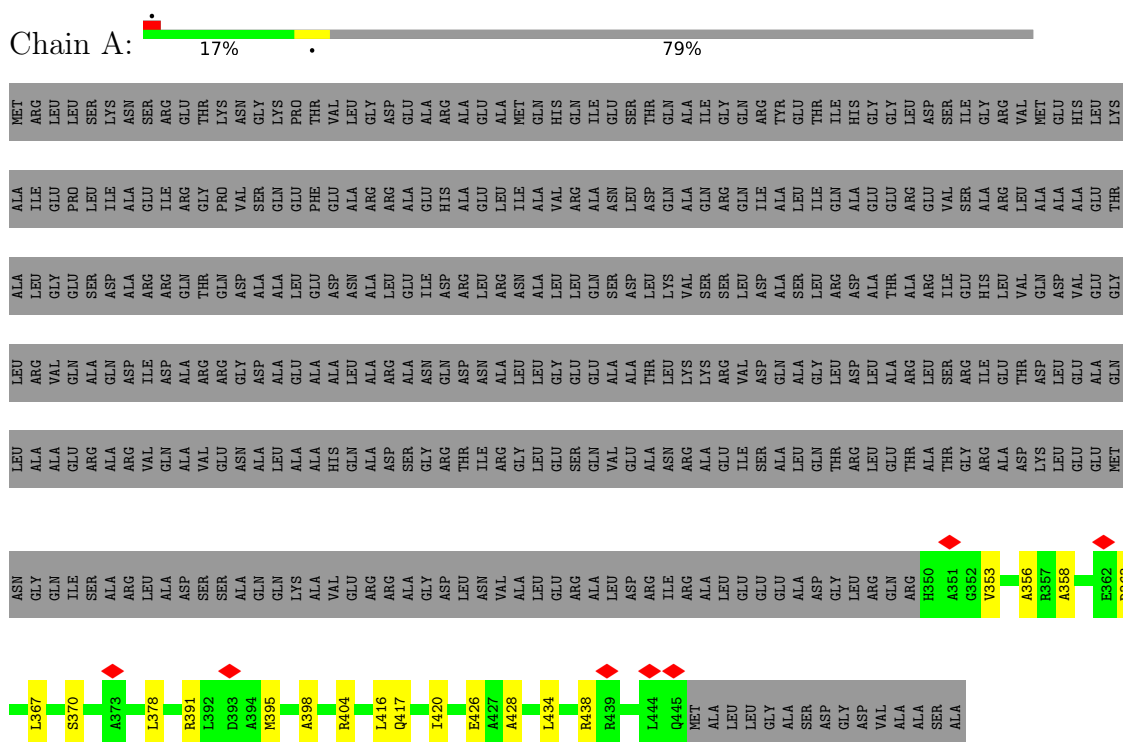
*Continued from previous page...*

Mol	Chain	Residues	Atoms					AltConf	Trace
2	N	112	Total 869	C 539	N 155	O 170	S 5	0	0
2	M	112	Total 869	C 539	N 155	O 170	S 5	0	0
2	S	111	Total 860	C 534	N 154	O 167	S 5	0	0
2	T	112	Total 869	C 539	N 155	O 170	S 5	0	0

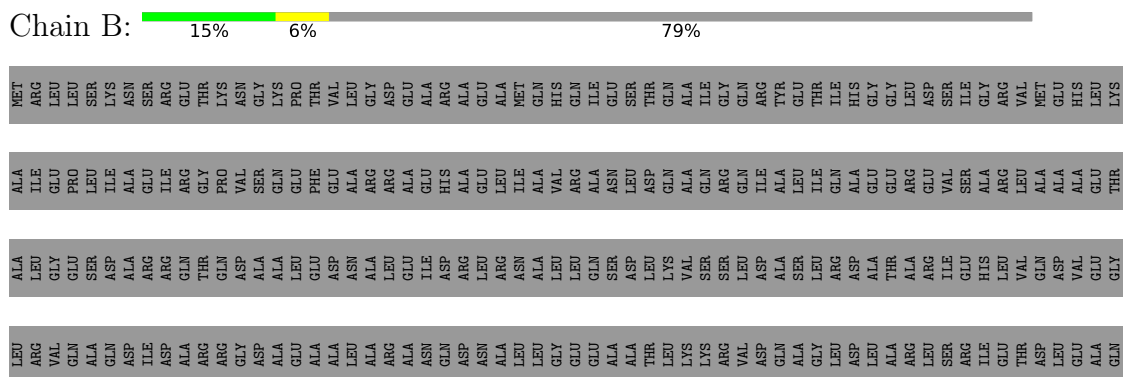
### 3 Residue-property plots

These plots are drawn for all protein, RNA, DNA and oligosaccharide chains in the entry. The first graphic for a chain summarises the proportions of the various outlier classes displayed in the second graphic. The second graphic shows the sequence view annotated by issues in geometry and atom inclusion in map density. Residues are color-coded according to the number of geometric quality criteria for which they contain at least one outlier: green = 0, yellow = 1, orange = 2 and red = 3 or more. A red diamond above a residue indicates a poor fit to the EM map for this residue (all-atom inclusion < 40%). Stretches of 2 or more consecutive residues without any outlier are shown as a green connector. Residues present in the sample, but not in the model, are shown in grey.

#### • Molecule 1: Crescentin



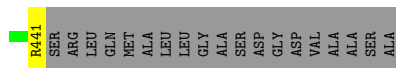
#### • Molecule 1: Crescentin











- Molecule 1: Crescentin



LEU ALA ALA ALA GLU ARG ARG VAL GLN LEU ALA ALA HIS GLN ASP SER GLY THR ILE ARG GLY LEU LEU GLU SER GLN VAL GLU ALA ASN ARG ALA ALA LEU THR ARG GLU ILE SER ALA ALA LEU GLN THR ARG THR GLY ARG ALA ASP LYS LEU LEU GLU GLU MET

ASN	GLY	GLN	ILE	SER	ALA	ARG	ALA	LEU	ASP	SER	SER	ALA	GLN	GLN	LYS	VAL	GLU	ARG	ARG	GLY	ASP	LEU	ASN	VAL	ALA	ALA	LEU	GLU	ARG	ILE	ARG	LEU	GLY	GLU	GLU	CLU	ALA	ASP	GLY	LEU	ARG	GLN	ARG	R350	R351	R352	R353	R354	T355	A356	R357	A358
-----	-----	-----	-----	-----	-----	-----	-----	-----	-----	-----	-----	-----	-----	-----	-----	-----	-----	-----	-----	-----	-----	-----	-----	-----	-----	-----	-----	-----	-----	-----	-----	-----	-----	-----	-----	-----	-----	-----	-----	-----	-----	-----	-----	------	------	------	------	------	------	------	------	------



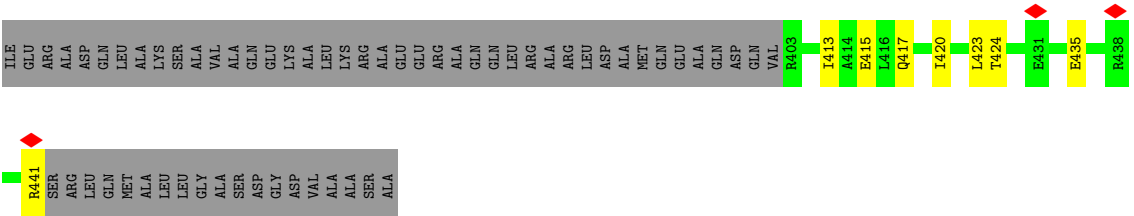
- Molecule 1: Crescentin



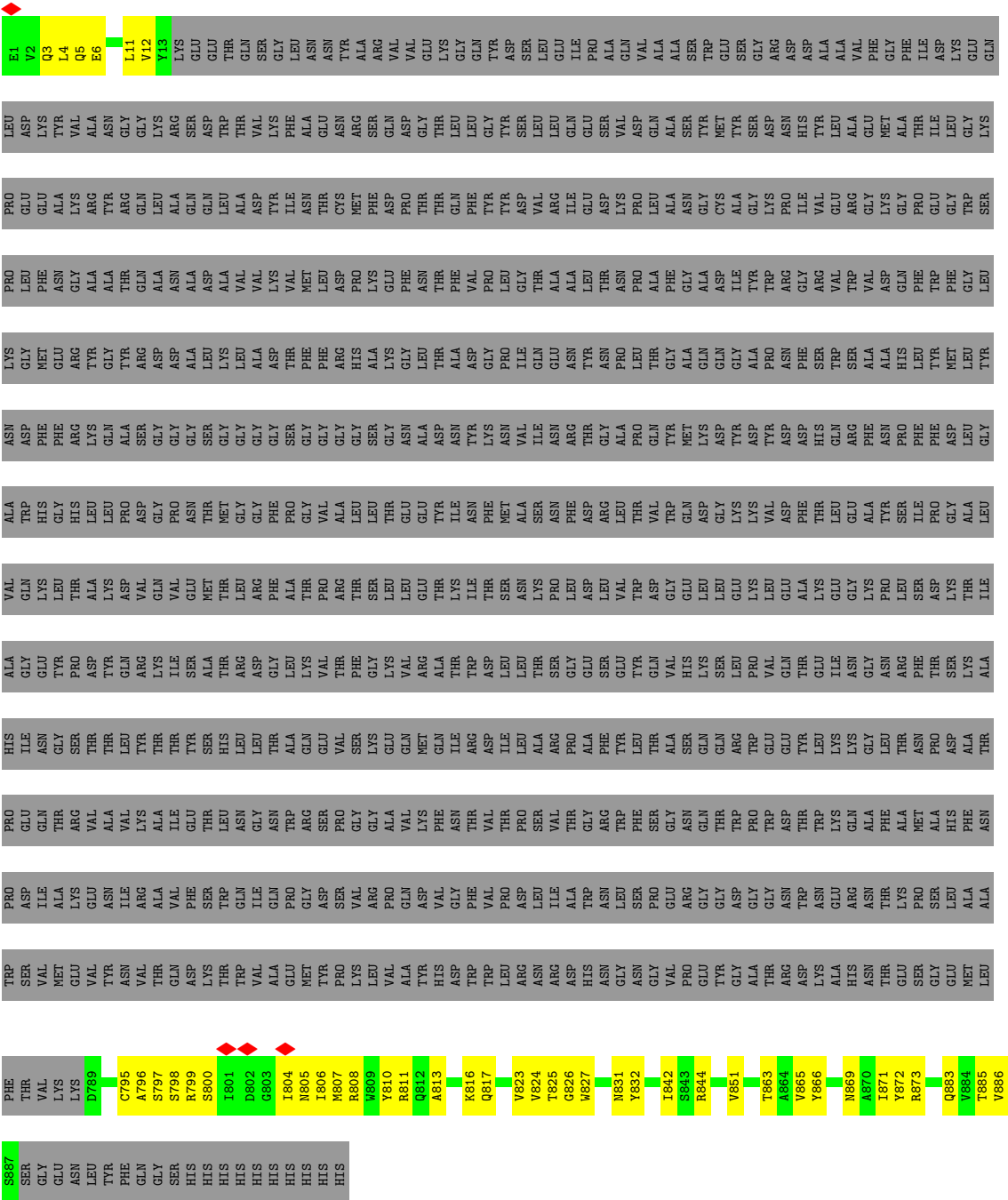
LEU  
ALA  
ALA  
GLU  
ARG  
ARG  
ALA  
VAL  
GLN  
ALA  
VAL  
GLU  
ASN  
ALA  
LEU  
ALA  
ALA  
ALA  
HIS  
GLN  
ASP  
SER  
GLY  
ARG  
THR  
ILE  
ARG  
GLY  
LEU  
GLU  
GLN  
VAL  
GLU  
ALA  
ASN  
ARG  
ALA  
GLU  
ILE  
SER  
ALA  
LEU  
GLN  
THR  
ARG  
GLY  
LEU  
GLU  
THR  
ALA  
THR  
GLY  
ARG  
ALA  
ASP  
LYS  
LEU  
LEU  
GLU  
GLU  
MET





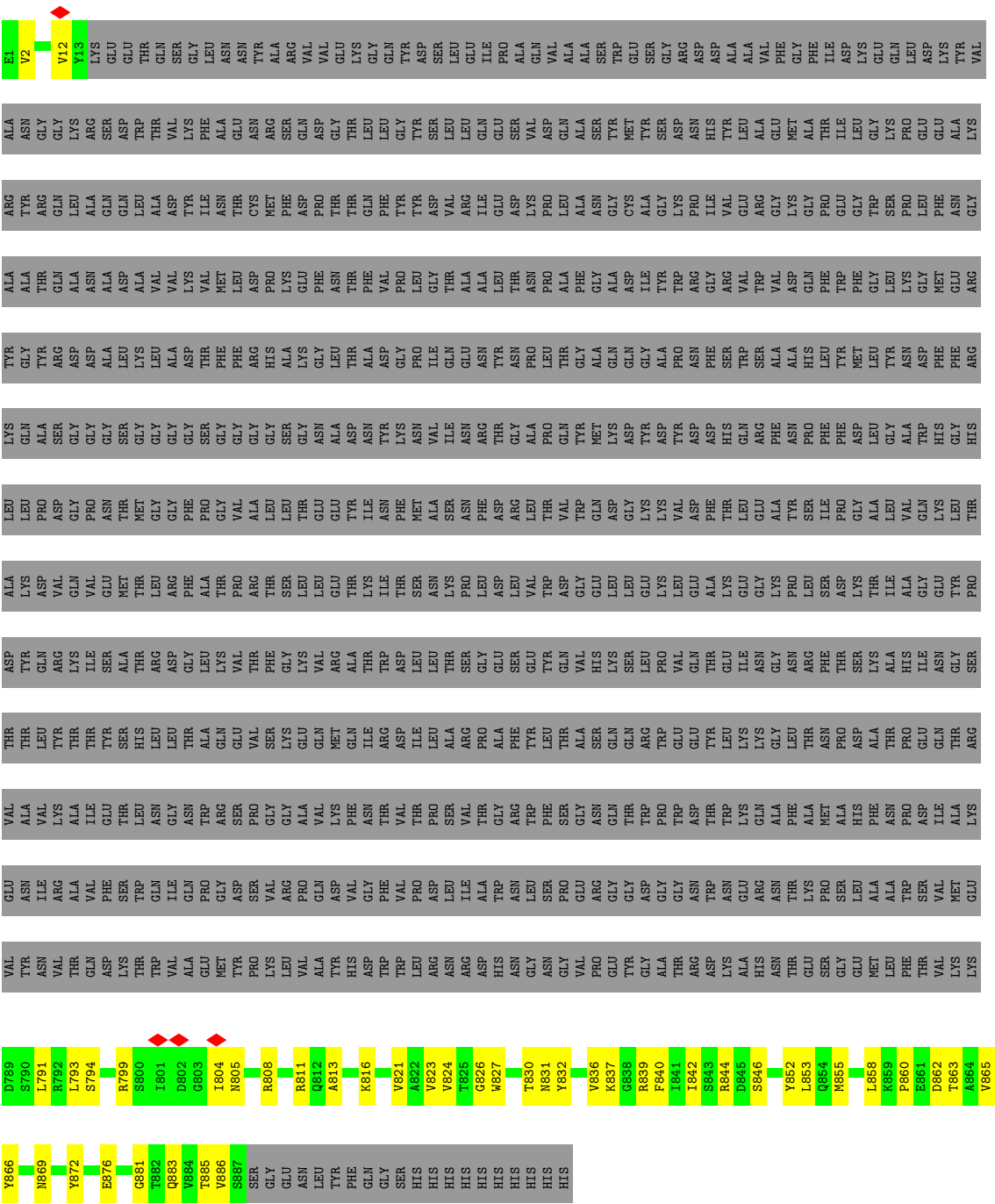


• Molecule 2: Crescentus-specific megabody MB13



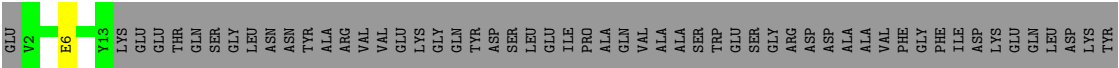
● Molecule 2: Crescentus-specific megabody MB13

Chain C:  88%

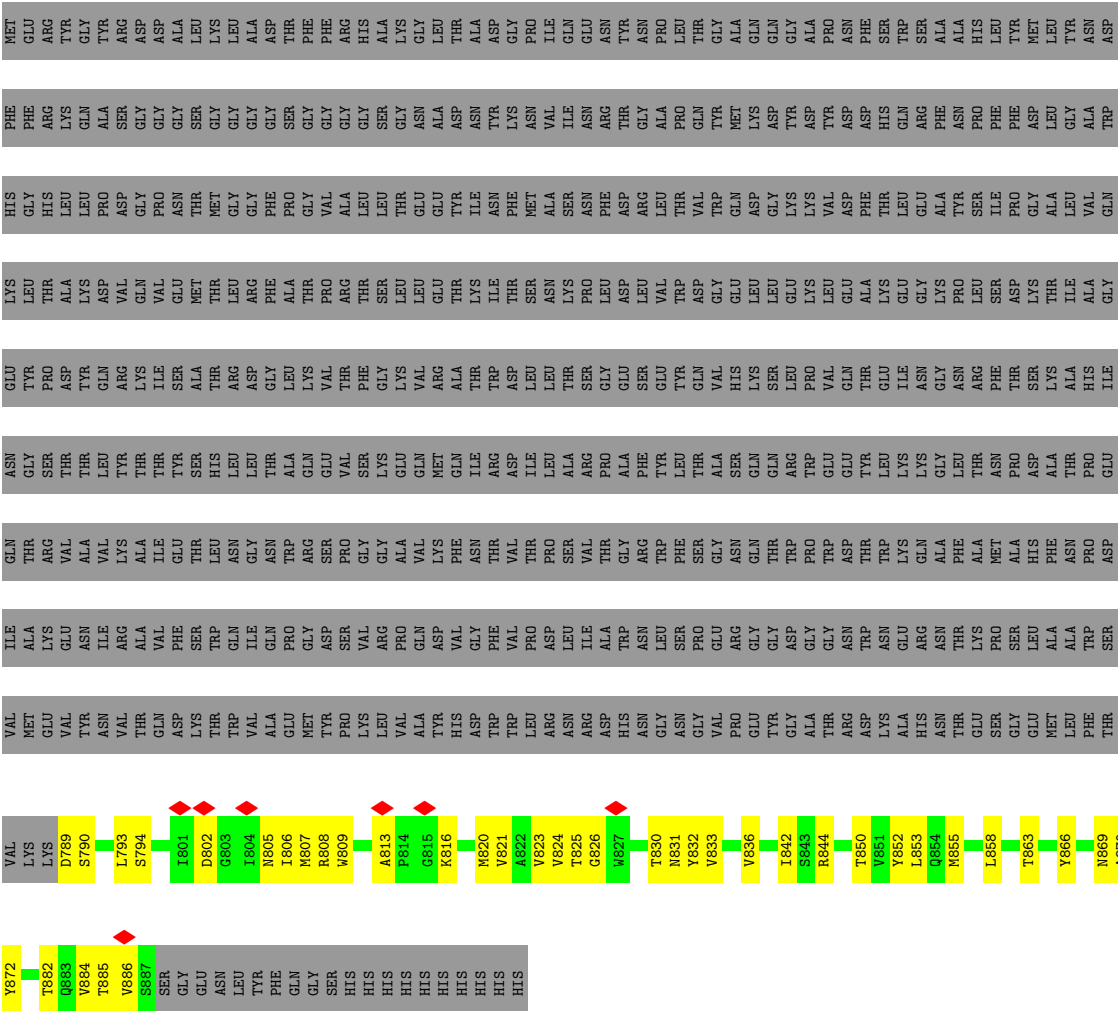


● Molecule 2: Crescentus-specific megabody MB13

Chain I:  88%

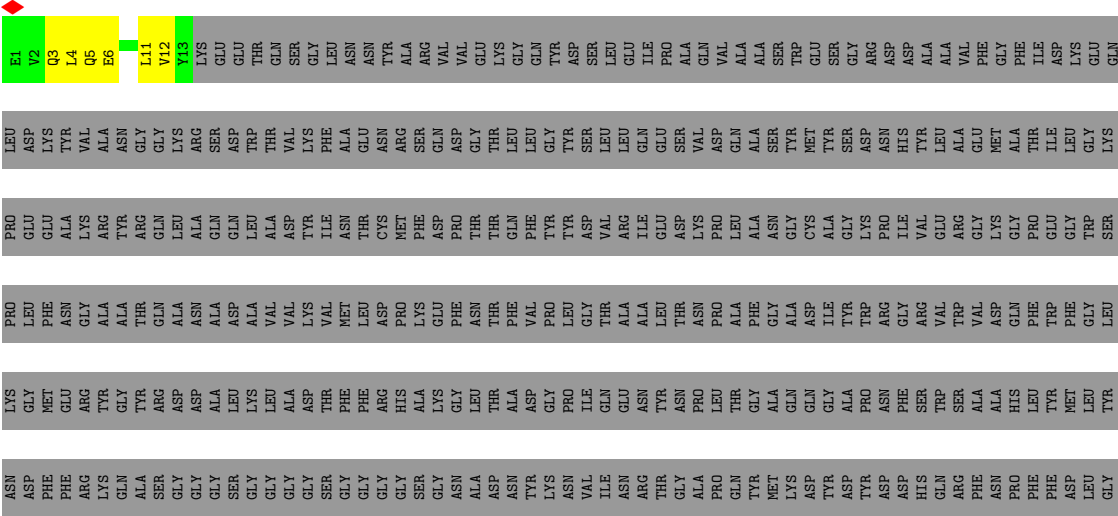




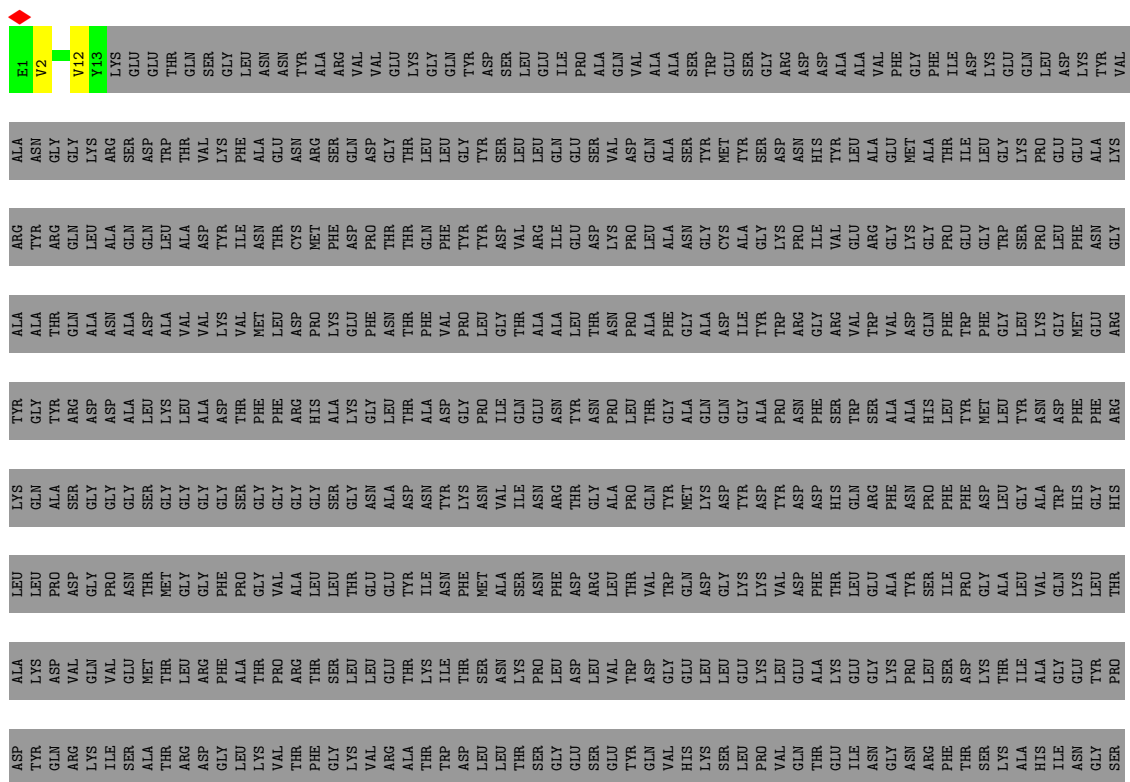


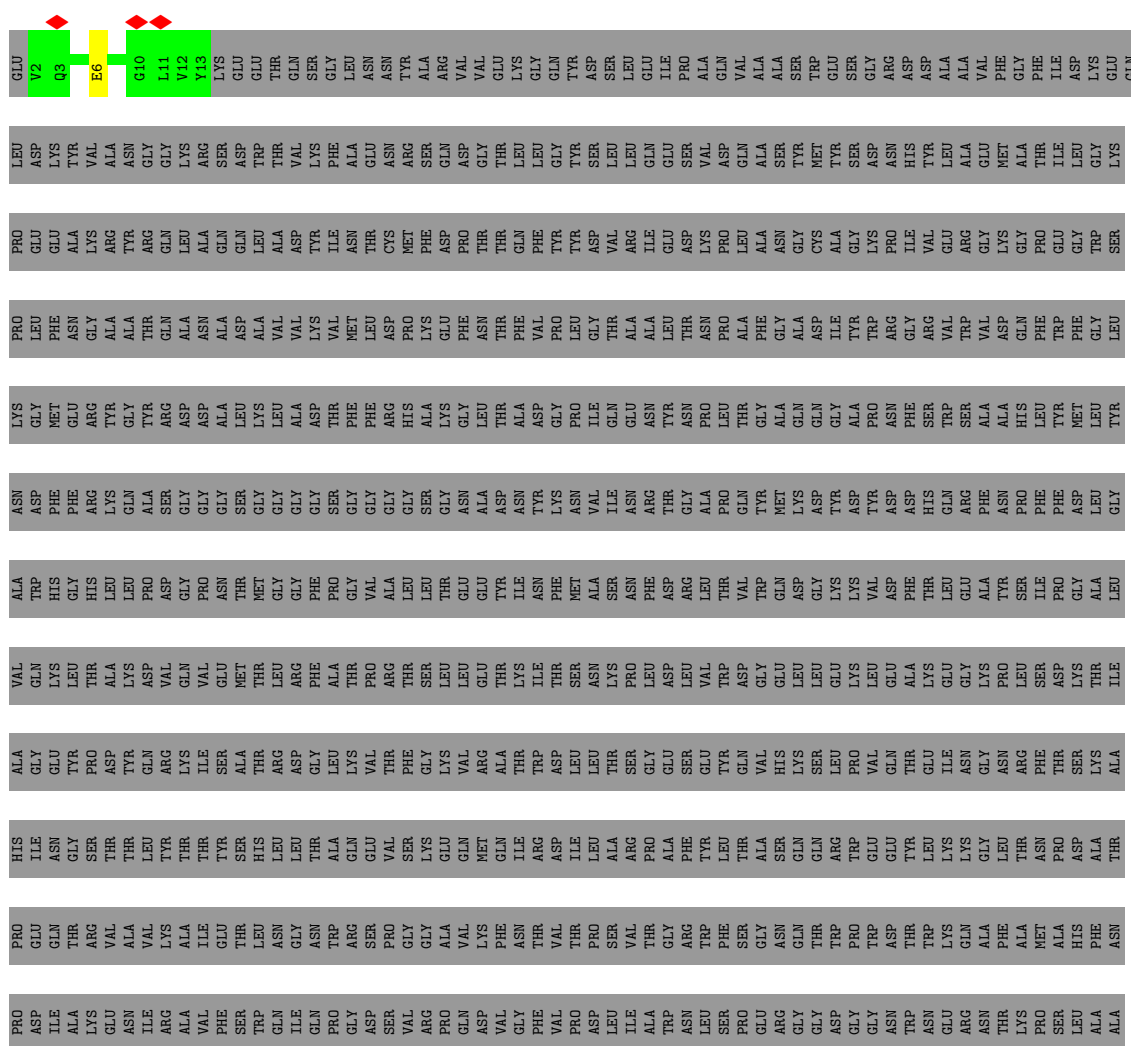
● Molecule 2: Crescentus-specific megabody MB13

Chain N: 8% 5% 88%














Q880	G881	T882	Q883	V884	T885	V886	S887	SER	GLY	GLU	ASN	LEU	TYR	PHE	GLN	GLY	SER	HIS	HIS	HIS	HIS	HIS	HIS	HIS	HIS	HIS	HIS
------	------	------	------	------	------	------	------	-----	-----	-----	-----	-----	-----	-----	-----	-----	-----	-----	-----	-----	-----	-----	-----	-----	-----	-----	-----

## 4 Experimental information

Property	Value	Source
EM reconstruction method	SINGLE PARTICLE	Depositor
Imposed symmetry	POINT, C2	Depositor
Number of particles used	599993	Depositor
Resolution determination method	FSC 0.143 CUT-OFF	Depositor
CTF correction method	PHASE FLIPPING AND AMPLITUDE CORRECTION	Depositor
Microscope	FEI TITAN KRIOS	Depositor
Voltage (kV)	300	Depositor
Electron dose ( $e^-/\text{\AA}^2$ )	53	Depositor
Minimum defocus (nm)	800	Depositor
Maximum defocus (nm)	2400	Depositor
Magnification	81000	Depositor
Image detector	GATAN K3 (6k x 4k)	Depositor
Maximum map value	1.996	Depositor
Minimum map value	-0.002	Depositor
Average map value	0.001	Depositor
Map value standard deviation	0.017	Depositor
Recommended contour level	0.06	Depositor
Map size (Å)	424.0, 424.0, 424.0	wwPDB
Map dimensions	320, 320, 320	wwPDB
Map angles (°)	90.0, 90.0, 90.0	wwPDB
Pixel spacing (Å)	1.325, 1.325, 1.325	Depositor

## 5 Model quality [i](#)

### 5.1 Standard geometry [i](#)

The Z score for a bond length (or angle) is the number of standard deviations the observed value is removed from the expected value. A bond length (or angle) with  $|Z| > 5$  is considered an outlier worth inspection. RMSZ is the root-mean-square of all Z scores of the bond lengths (or angles).

Mol	Chain	Bond lengths		Bond angles	
		RMSZ	# Z  >5	RMSZ	# Z  >5
1	A	0.25	0/740	0.40	0/991
1	B	0.27	0/748	0.40	0/1001
1	E	0.31	0/599	0.46	0/808
1	F	0.30	0/599	0.45	0/808
1	G	0.27	0/333	0.41	0/445
1	H	0.27	0/299	0.48	0/400
1	K	0.25	0/740	0.40	0/991
1	L	0.27	0/748	0.40	0/1001
1	O	0.31	0/599	0.46	0/808
1	P	0.30	0/599	0.45	0/808
1	Q	0.27	0/333	0.41	0/445
1	R	0.28	0/299	0.47	0/400
2	C	0.43	0/883	0.51	0/1192
2	D	0.41	0/883	0.50	0/1192
2	I	0.39	0/874	0.53	0/1180
2	J	0.37	0/883	0.51	0/1192
2	M	0.43	0/883	0.51	0/1192
2	N	0.41	0/883	0.50	0/1192
2	S	0.39	0/874	0.53	0/1180
2	T	0.37	0/883	0.51	0/1192
All	All	0.35	0/13682	0.47	0/18418

There are no bond length outliers.

There are no bond angle outliers.

There are no chirality outliers.

There are no planarity outliers.

### 5.2 Too-close contacts [i](#)

In the following table, the Non-H and H(model) columns list the number of non-hydrogen atoms and hydrogen atoms in the chain respectively. The H(added) column lists the number of hydrogen

atoms added and optimized by MolProbity. The Clashes column lists the number of clashes within the asymmetric unit, whereas Symm-Clashes lists symmetry-related clashes.

Mol	Chain	Non-H	H(model)	H(added)	Clashes	Symm-Clashes
1	A	739	0	745	27	0
1	B	747	0	754	30	0
1	E	600	0	601	17	0
1	F	600	0	601	13	0
1	G	333	0	336	10	0
1	H	299	0	299	13	0
1	K	739	0	745	27	0
1	L	747	0	754	30	0
1	O	600	0	601	16	0
1	P	600	0	601	12	0
1	Q	333	0	336	9	0
1	R	299	0	299	12	0
2	C	869	0	846	37	0
2	D	869	0	846	49	0
2	I	860	0	837	26	0
2	J	869	0	846	33	0
2	M	869	0	846	38	0
2	N	869	0	846	48	0
2	S	860	0	837	27	0
2	T	869	0	846	32	0
All	All	13570	0	13422	397	0

The all-atom clashscore is defined as the number of clashes found per 1000 atoms (including hydrogen atoms). The all-atom clashscore for this structure is 15.

The worst 5 of 397 close contacts within the same asymmetric unit are listed below, sorted by their clash magnitude.

Atom-1	Atom-2	Interatomic distance (Å)	Clash overlap (Å)
1:H:441:ARG:NH2	1:K:358:ALA:CB	2.28	0.97
2:D:873:ARG:HE	1:L:396:GLN:CD	1.69	0.95
1:B:396:GLN:CD	2:N:873:ARG:HE	1.70	0.95
1:H:441:ARG:NH2	1:K:358:ALA:HB2	1.83	0.92
2:M:808:ARG:HG2	2:M:823:VAL:HG22	1.52	0.92

There are no symmetry-related clashes.

## 5.3 Torsion angles

### 5.3.1 Protein backbone

In the following table, the Percentiles column shows the percent Ramachandran outliers of the chain as a percentile score with respect to all PDB entries followed by that with respect to all EM entries.

The Analysed column shows the number of residues for which the backbone conformation was analysed, and the total number of residues.

Mol	Chain	Analysed	Favoured	Allowed	Outliers	Percentiles	
1	A	94/460 (20%)	94 (100%)	0	0	100	100
1	B	95/460 (21%)	94 (99%)	1 (1%)	0	100	100
1	E	77/460 (17%)	75 (97%)	2 (3%)	0	100	100
1	F	77/460 (17%)	77 (100%)	0	0	100	100
1	G	41/460 (9%)	41 (100%)	0	0	100	100
1	H	37/460 (8%)	35 (95%)	2 (5%)	0	100	100
1	K	94/460 (20%)	94 (100%)	0	0	100	100
1	L	95/460 (21%)	94 (99%)	1 (1%)	0	100	100
1	O	77/460 (17%)	75 (97%)	2 (3%)	0	100	100
1	P	77/460 (17%)	77 (100%)	0	0	100	100
1	Q	41/460 (9%)	41 (100%)	0	0	100	100
1	R	37/460 (8%)	35 (95%)	2 (5%)	0	100	100
2	C	108/907 (12%)	99 (92%)	9 (8%)	0	100	100
2	D	108/907 (12%)	99 (92%)	9 (8%)	0	100	100
2	I	107/907 (12%)	100 (94%)	7 (6%)	0	100	100
2	J	108/907 (12%)	96 (89%)	12 (11%)	0	100	100
2	M	108/907 (12%)	99 (92%)	9 (8%)	0	100	100
2	N	108/907 (12%)	99 (92%)	9 (8%)	0	100	100
2	S	107/907 (12%)	100 (94%)	7 (6%)	0	100	100
2	T	108/907 (12%)	96 (89%)	12 (11%)	0	100	100
All	All	1704/12776 (13%)	1620 (95%)	84 (5%)	0	100	100

There are no Ramachandran outliers to report.



### 5.3.2 Protein sidechains ⓘ

In the following table, the Percentiles column shows the percent sidechain outliers of the chain as a percentile score with respect to all PDB entries followed by that with respect to all EM entries.

The Analysed column shows the number of residues for which the sidechain conformation was analysed, and the total number of residues.

Mol	Chain	Analysed	Rotameric	Outliers	Percentiles	
1	A	70/347 (20%)	69 (99%)	1 (1%)	62	75
1	B	71/347 (20%)	71 (100%)	0	100	100
1	E	61/347 (18%)	61 (100%)	0	100	100
1	F	61/347 (18%)	61 (100%)	0	100	100
1	G	32/347 (9%)	31 (97%)	1 (3%)	35	56
1	H	28/347 (8%)	28 (100%)	0	100	100
1	K	70/347 (20%)	69 (99%)	1 (1%)	62	75
1	L	71/347 (20%)	71 (100%)	0	100	100
1	O	61/347 (18%)	61 (100%)	0	100	100
1	P	61/347 (18%)	61 (100%)	0	100	100
1	Q	32/347 (9%)	31 (97%)	1 (3%)	35	56
1	R	28/347 (8%)	28 (100%)	0	100	100
2	C	94/749 (13%)	94 (100%)	0	100	100
2	D	94/749 (13%)	94 (100%)	0	100	100
2	I	93/749 (12%)	93 (100%)	0	100	100
2	J	94/749 (13%)	94 (100%)	0	100	100
2	M	94/749 (13%)	94 (100%)	0	100	100
2	N	94/749 (13%)	94 (100%)	0	100	100
2	S	93/749 (12%)	93 (100%)	0	100	100
2	T	94/749 (13%)	94 (100%)	0	100	100
All	All	1396/10156 (14%)	1392 (100%)	4 (0%)	90	92

All (4) residues with a non-rotameric sidechain are listed below:

Mol	Chain	Res	Type
1	A	404	ARG
1	G	404	ARG
1	K	404	ARG

*Continued on next page...*

*Continued from previous page...*

Mol	Chain	Res	Type
1	Q	404	ARG

Sometimes sidechains can be flipped to improve hydrogen bonding and reduce clashes. All (3) such sidechains are listed below:

Mol	Chain	Res	Type
1	B	417	GLN
1	L	417	GLN
2	N	831	ASN

### 5.3.3 RNA [i](#)

There are no RNA molecules in this entry.

## 5.4 Non-standard residues in protein, DNA, RNA chains [i](#)

There are no non-standard protein/DNA/RNA residues in this entry.

## 5.5 Carbohydrates [i](#)

There are no oligosaccharides in this entry.

## 5.6 Ligand geometry [i](#)

There are no ligands in this entry.

## 5.7 Other polymers [i](#)

There are no such residues in this entry.

## 5.8 Polymer linkage issues [i](#)

There are no chain breaks in this entry.

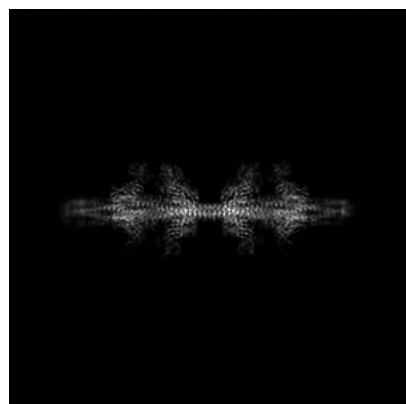
## 6 Map visualisation [i](#)

This section contains visualisations of the EMDB entry EMD-15398. These allow visual inspection of the internal detail of the map and identification of artifacts.

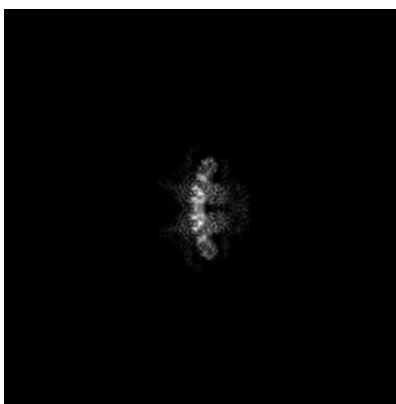
Images derived from a raw map, generated by summing the deposited half-maps, are presented below the corresponding image components of the primary map to allow further visual inspection and comparison with those of the primary map.

### 6.1 Orthogonal projections [i](#)

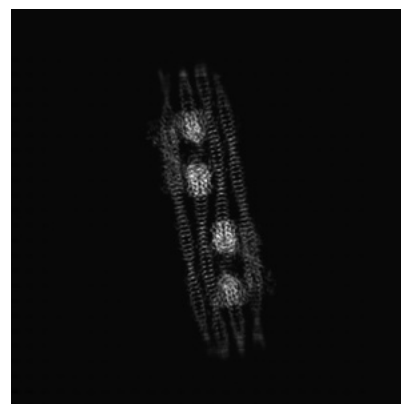
#### 6.1.1 Primary map



X

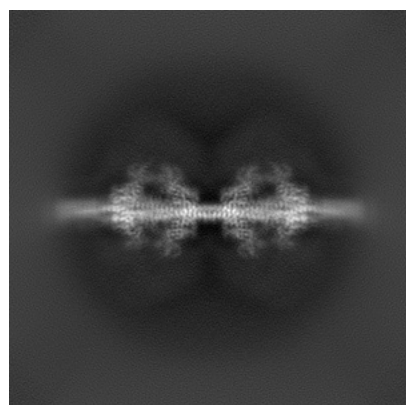


Y

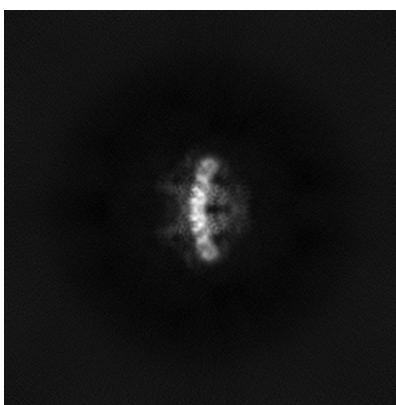


Z

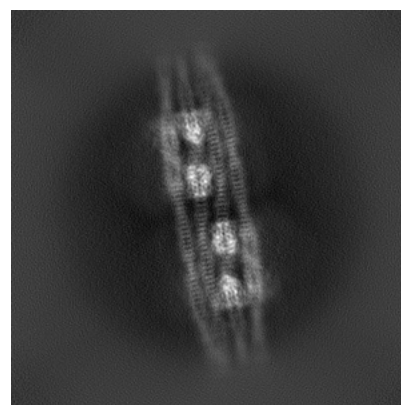
#### 6.1.2 Raw map



X



Y

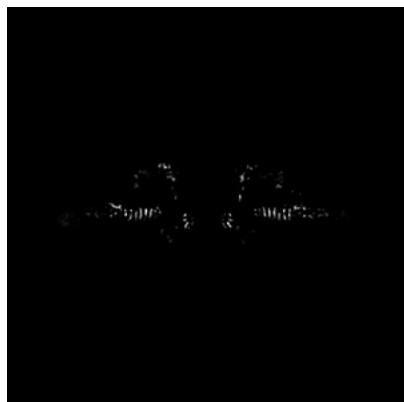


Z

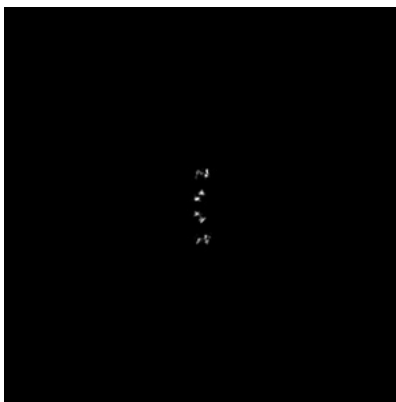
The images above show the map projected in three orthogonal directions.

## 6.2 Central slices [i](#)

### 6.2.1 Primary map



X Index: 160

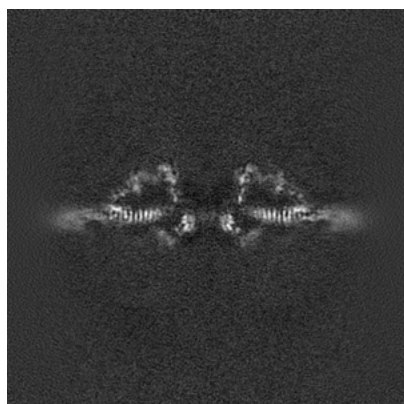


Y Index: 160

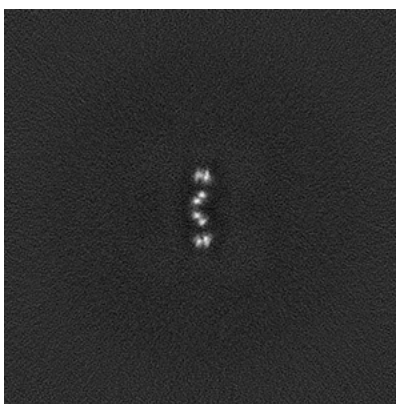


Z Index: 160

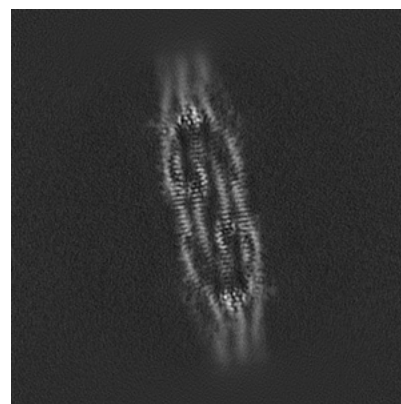
### 6.2.2 Raw map



X Index: 160



Y Index: 160



Z Index: 160

The images above show central slices of the map in three orthogonal directions.

## 6.3 Largest variance slices [i](#)

### 6.3.1 Primary map



X Index: 172



Y Index: 140

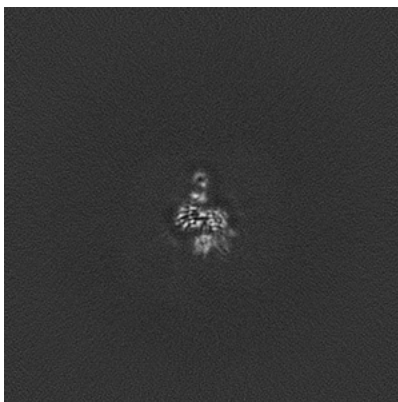


Z Index: 156

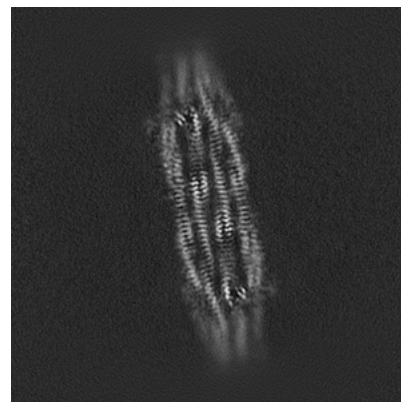
### 6.3.2 Raw map



X Index: 172



Y Index: 180

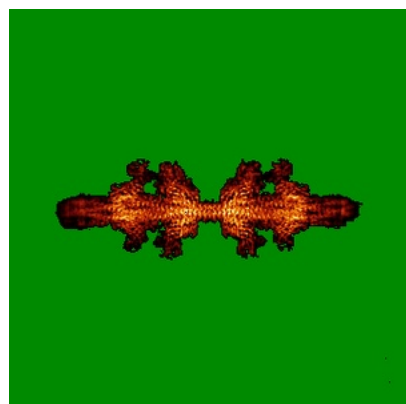


Z Index: 158

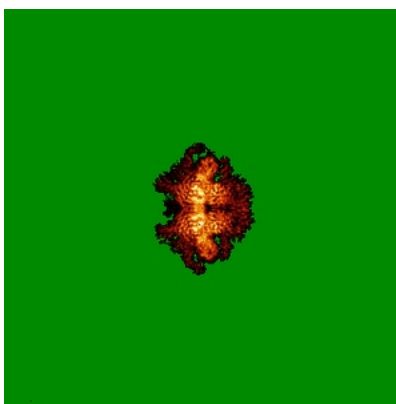
The images above show the largest variance slices of the map in three orthogonal directions.

## 6.4 Orthogonal standard-deviation projections (False-color) [i](#)

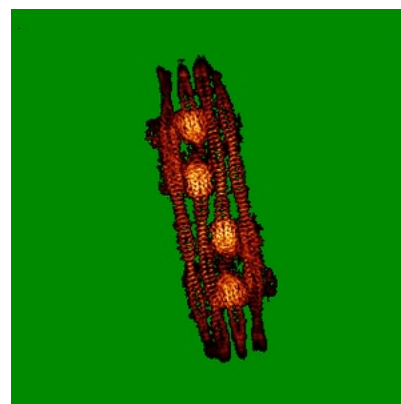
### 6.4.1 Primary map



X

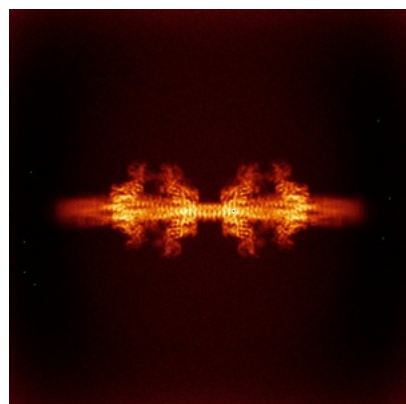


Y

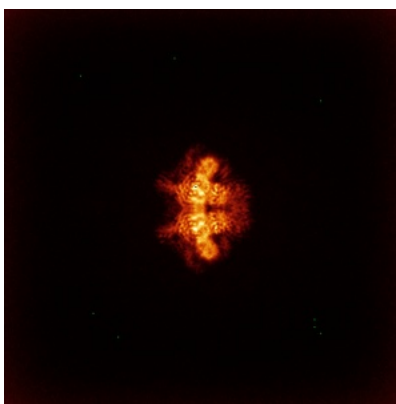


Z

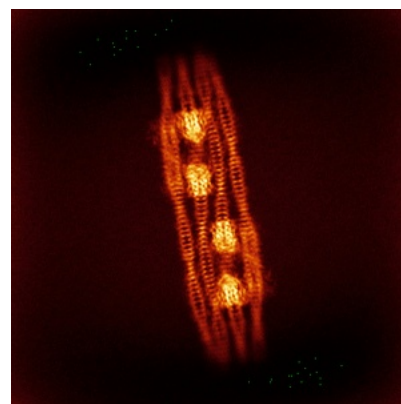
### 6.4.2 Raw map



X



Y

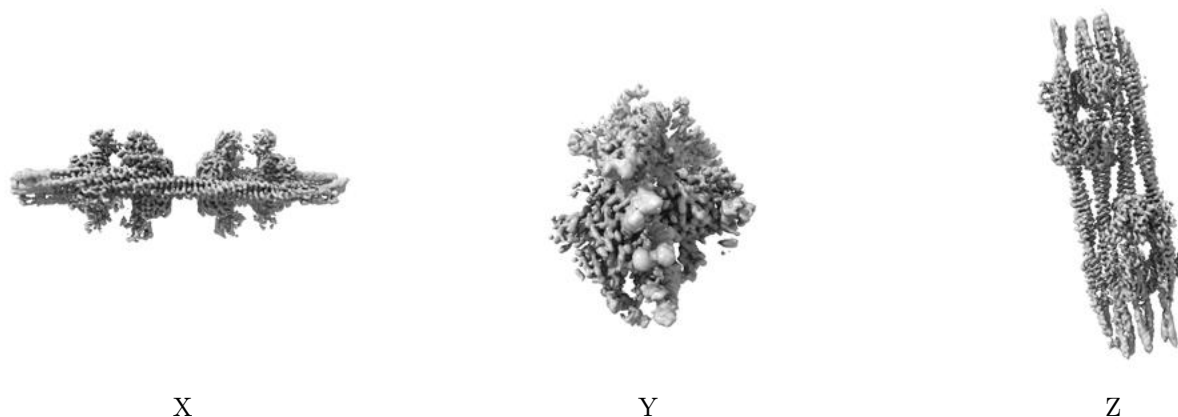


Z

The images above show the map standard deviation projections with false color in three orthogonal directions. Minimum values are shown in green, max in blue, and dark to light orange shades represent small to large values respectively.

## 6.5 Orthogonal surface views [i](#)

### 6.5.1 Primary map



The images above show the 3D surface view of the map at the recommended contour level 0.06. These images, in conjunction with the slice images, may facilitate assessment of whether an appropriate contour level has been provided.

### 6.5.2 Raw map



These images show the 3D surface of the raw map. The raw map's contour level was selected so that its surface encloses the same volume as the primary map does at its recommended contour level.

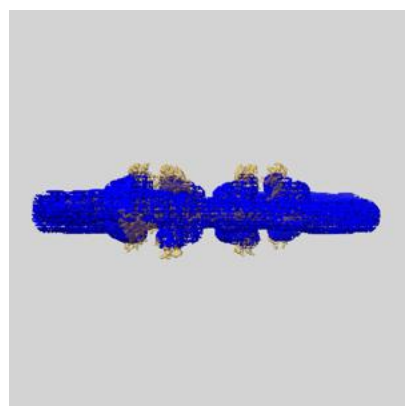
## 6.6 Mask visualisation [i](#)

This section shows the 3D surface view of the primary map at 50% transparency overlaid with the specified mask at 0% transparency

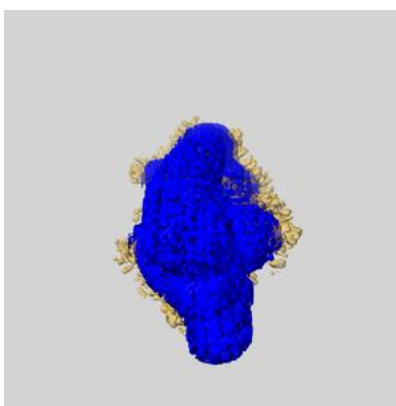
A mask typically either:

- Encompasses the whole structure
- Separates out a domain, a functional unit, a monomer or an area of interest from a larger structure

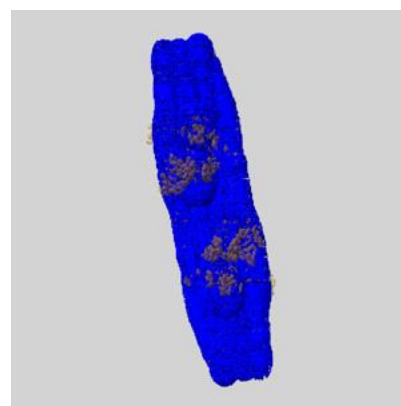
### 6.6.1 emd\_15398\_msk\_1.map [i](#)



X



Y



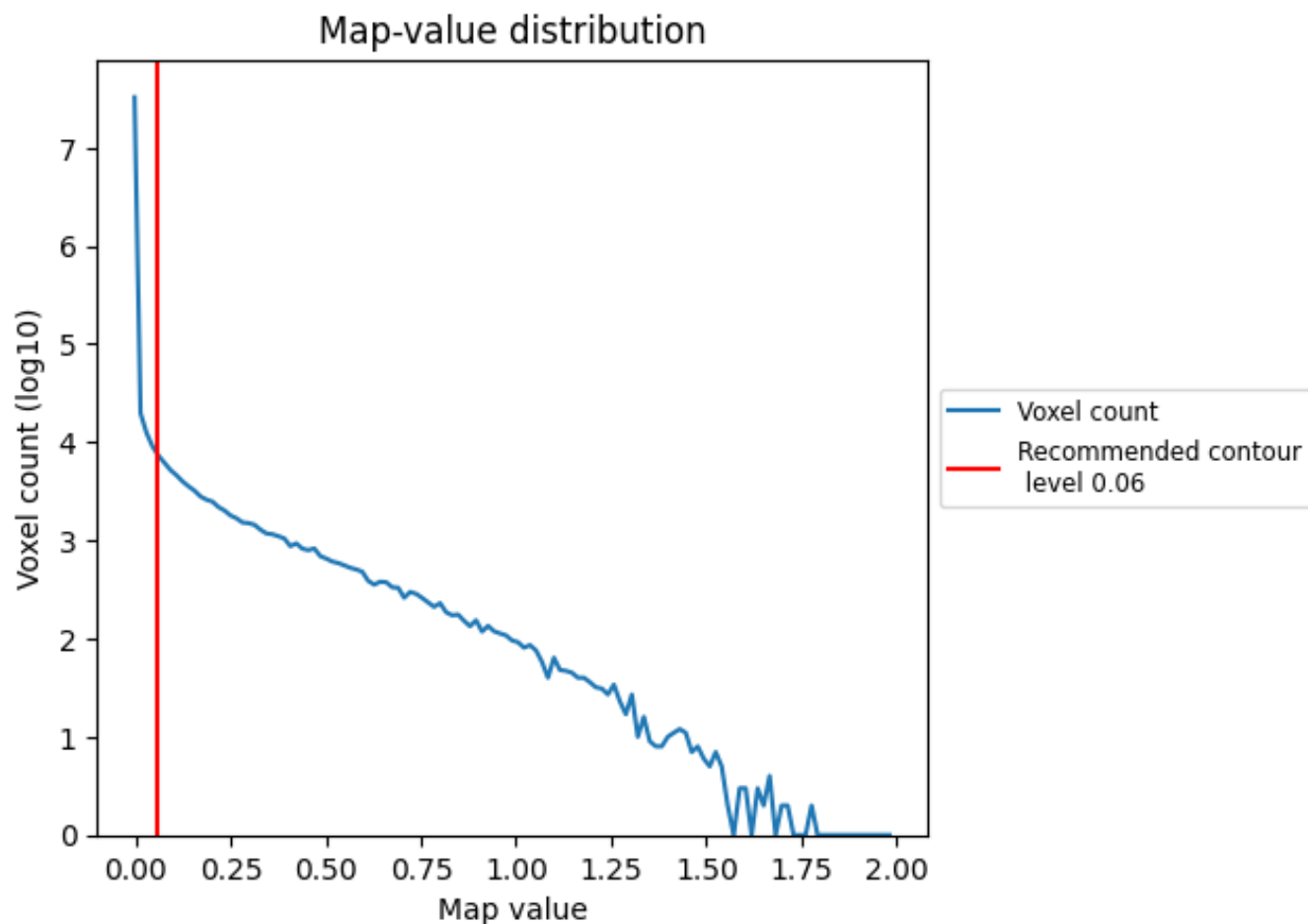
Z



## 7 Map analysis [i](#)

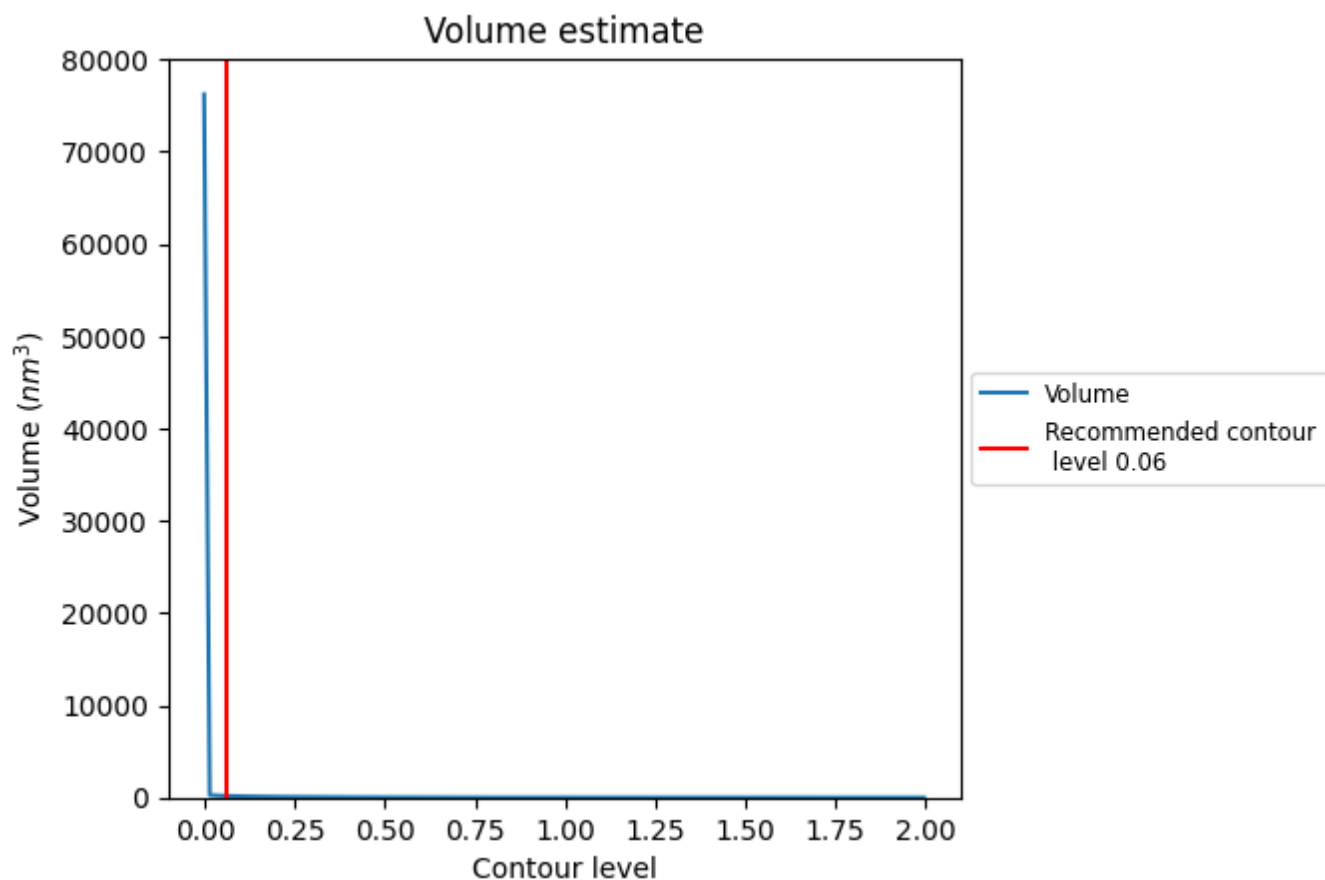
This section contains the results of statistical analysis of the map.

### 7.1 Map-value distribution [i](#)



The map-value distribution is plotted in 128 intervals along the x-axis. The y-axis is logarithmic. A spike in this graph at zero usually indicates that the volume has been masked.

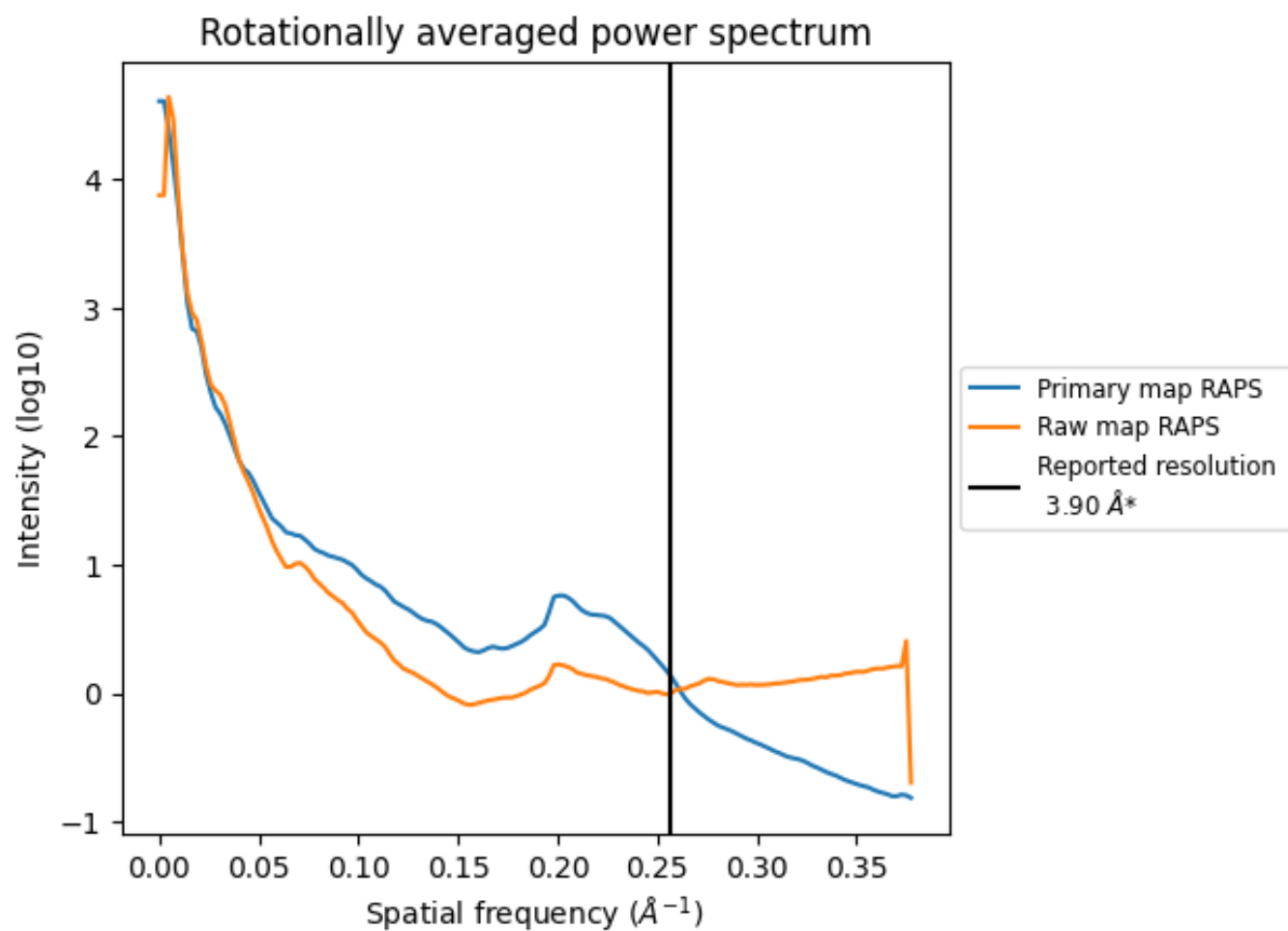
## 7.2 Volume estimate [i](#)



The volume at the recommended contour level is 177 nm<sup>3</sup>; this corresponds to an approximate mass of 160 kDa.

The volume estimate graph shows how the enclosed volume varies with the contour level. The recommended contour level is shown as a vertical line and the intersection between the line and the curve gives the volume of the enclosed surface at the given level.

### 7.3 Rotationally averaged power spectrum ⓘ

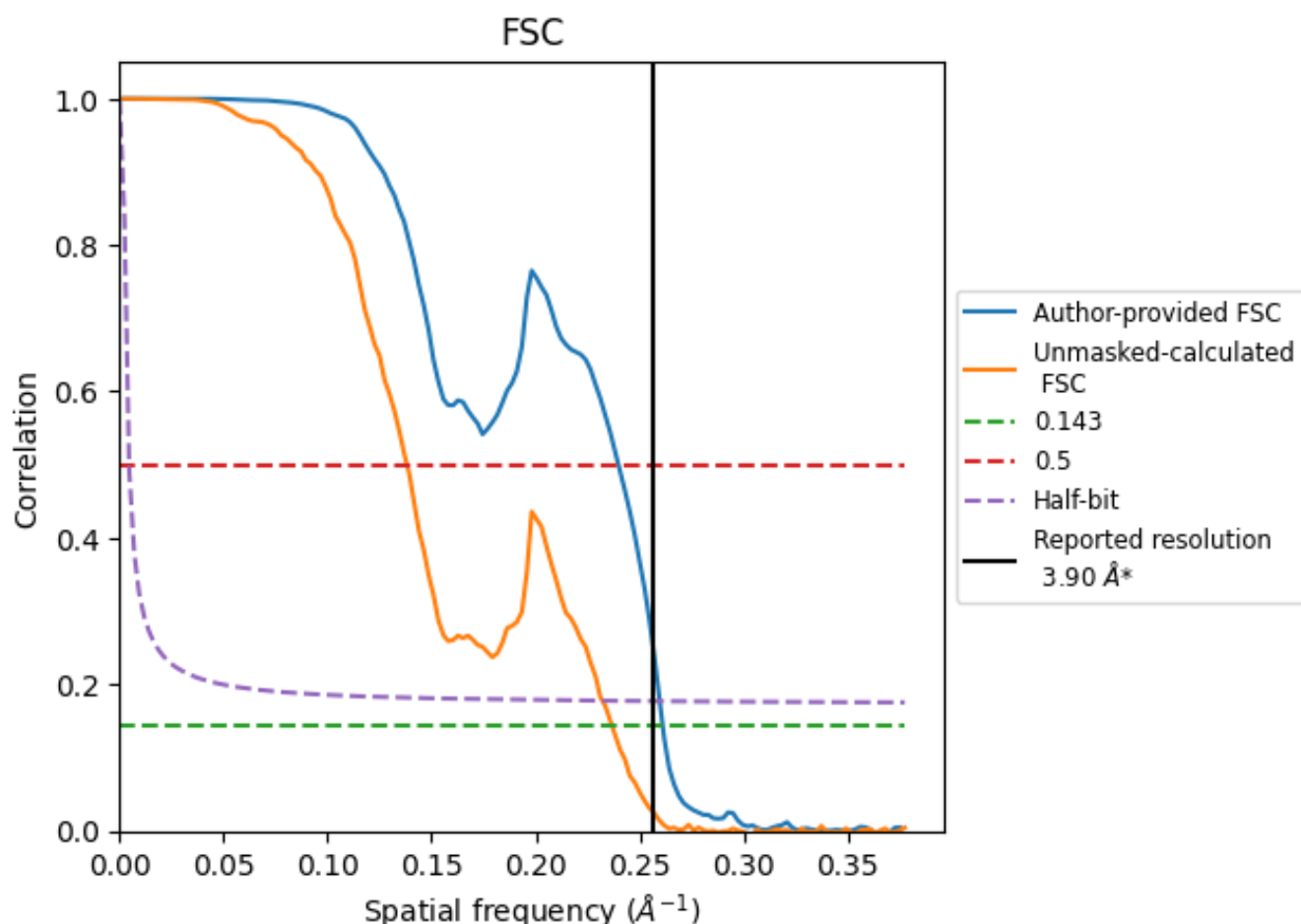


\*Reported resolution corresponds to spatial frequency of 0.256 Å<sup>-1</sup>

## 8 Fourier-Shell correlation [i](#)

Fourier-Shell Correlation (FSC) is the most commonly used method to estimate the resolution of single-particle and subtomogram-averaged maps. The shape of the curve depends on the imposed symmetry, mask and whether or not the two 3D reconstructions used were processed from a common reference. The reported resolution is shown as a black line. A curve is displayed for the half-bit criterion in addition to lines showing the 0.143 gold standard cut-off and 0.5 cut-off.

### 8.1 FSC [i](#)



\*Reported resolution corresponds to spatial frequency of 0.256  $\text{\AA}^{-1}$

## 8.2 Resolution estimates [i](#)

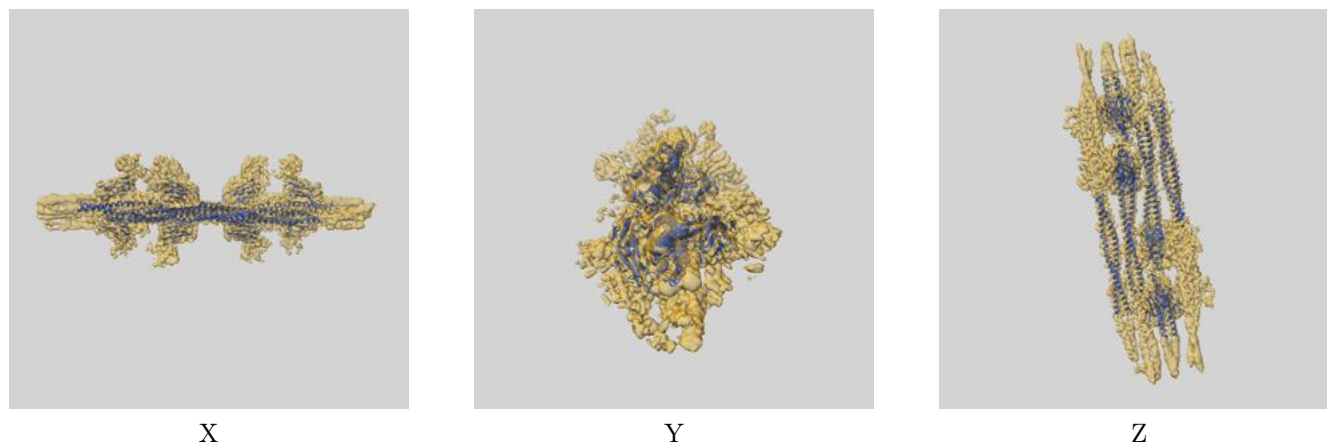
Resolution estimate (Å)	Estimation criterion (FSC cut-off)		
	0.143	0.5	Half-bit
Reported by author	3.90	-	-
Author-provided FSC curve	3.83	4.17	3.85
Unmasked-calculated*	4.22	7.24	4.31

\*Resolution estimate based on FSC curve calculated by comparison of deposited half-maps.

## 9 Map-model fit [i](#)

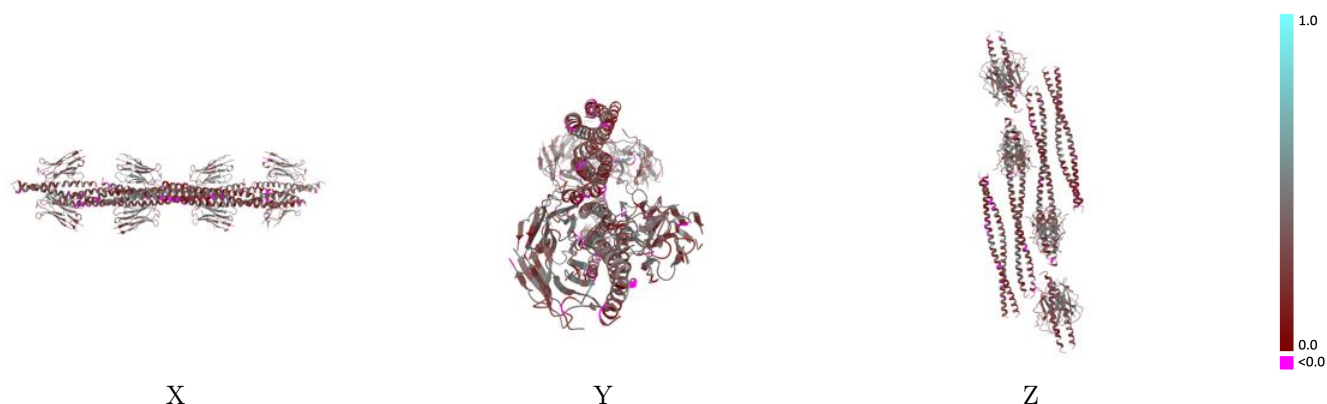
This section contains information regarding the fit between EMDB map EMD-15398 and PDB model 8AFH. Per-residue inclusion information can be found in [section 3](#) on [page 7](#).

### 9.1 Map-model overlay [i](#)



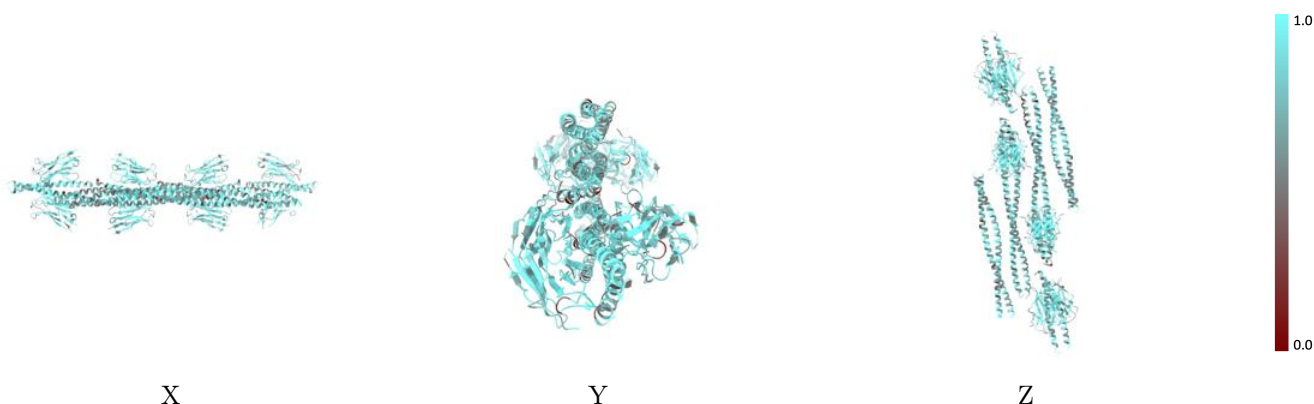
The images above show the 3D surface view of the map at the recommended contour level 0.06 at 50% transparency in yellow overlaid with a ribbon representation of the model coloured in blue. These images allow for the visual assessment of the quality of fit between the atomic model and the map.

## 9.2 Q-score mapped to coordinate model [i](#)



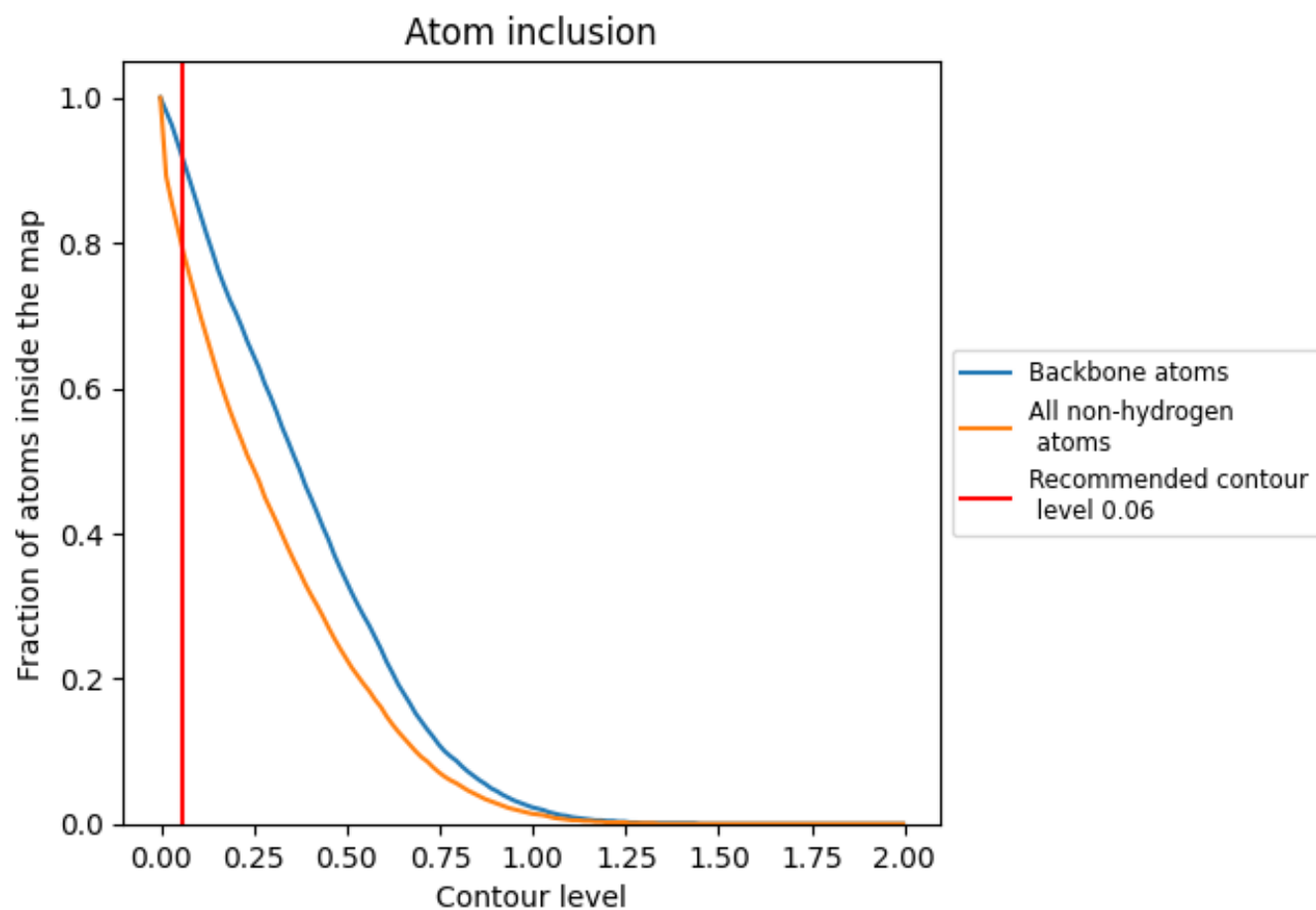
The images above show the model with each residue coloured according to its Q-score. This shows their resolvability in the map with higher Q-score values reflecting better resolvability. Please note: Q-score is calculating the resolvability of atoms, and thus high values are only expected at resolutions at which atoms can be resolved. Low Q-score values may therefore be expected for many entries.

## 9.3 Atom inclusion mapped to coordinate model [i](#)



The images above show the model with each residue coloured according to its atom inclusion. This shows to what extent they are inside the map at the recommended contour level (0.06).

## 9.4 Atom inclusion [i](#)













































At the recommended contour level, 91% of all backbone atoms, 79% of all non-hydrogen atoms, are inside the map.



## 9.5 Map-model fit summary

The table lists the average atom inclusion at the recommended contour level (0.06) and Q-score for the entire model and for each chain.

Chain	Atom inclusion	Q-score
All	 0.7880	 0.3100
A	 0.7480	 0.2680
B	 0.8040	 0.3270
C	 0.8420	 0.3670
D	 0.8420	 0.3710
E	 0.7120	 0.1900
F	 0.7500	 0.2400
G	 0.7650	 0.3030
H	 0.8330	 0.3240
I	 0.8350	 0.3390
J	 0.7770	 0.3300
K	 0.7180	 0.2710
L	 0.7890	 0.3030
M	 0.8330	 0.3600
N	 0.8100	 0.3550
O	 0.7180	 0.2030
P	 0.7570	 0.2640
Q	 0.7870	 0.2970
R	 0.7840	 0.2810
S	 0.7930	 0.3510
T	 0.7980	 0.3160

