



# Full wwPDB X-ray Structure Validation Report ⓘ

Jun 24, 2024 – 12:56 PM EDT

PDB ID : 7AEU  
Title : Pressure wave-exposed human hemoglobin: probe only data (5500 indexed images)  
Authors : Barends, T.R.M.; Schlichting, I.  
Deposited on : 2020-09-18  
Resolution : 2.54 Å(reported)

This is a Full wwPDB X-ray Structure Validation Report for a publicly released PDB entry.

We welcome your comments at [validation@mail.wwpdb.org](mailto:validation@mail.wwpdb.org)

A user guide is available at

<https://www.wwpdb.org/validation/2017/XrayValidationReportHelp>

with specific help available everywhere you see the ⓘ symbol.

The types of validation reports are described at

<http://www.wwpdb.org/validation/2017/FAQs#types>.

---

The following versions of software and data (see [references ⓘ](#)) were used in the production of this report:

MolProbity	:	4.02b-467
Mogul	:	2022.3.0, CSD as543be (2022)
Xtriage (Phenix)	:	1.20.1
EDS	:	2.37.1
buster-report	:	1.1.7 (2018)
Percentile statistics	:	20191225.v01 (using entries in the PDB archive December 25th 2019)
Refmac	:	5.8.0158
CCP4	:	7.0.044 (Gargrove)
Ideal geometry (proteins)	:	Engh & Huber (2001)
Ideal geometry (DNA, RNA)	:	Parkinson et al. (1996)
Validation Pipeline (wwPDB-VP)	:	2.37.1

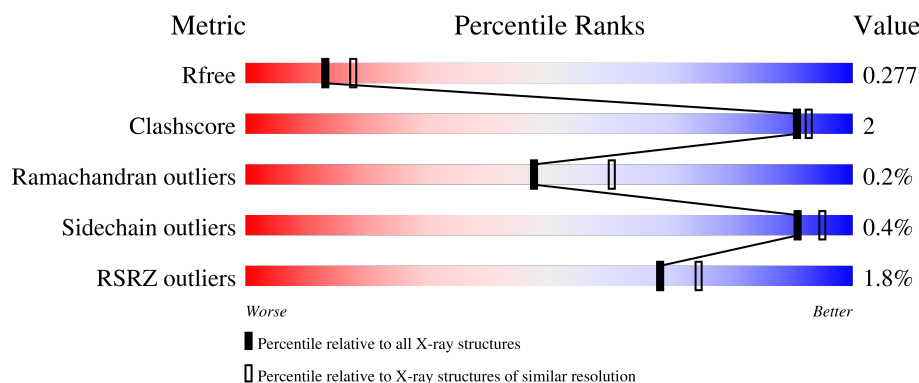
# 1 Overall quality at a glance

The following experimental techniques were used to determine the structure:

*X-RAY DIFFRACTION*

The reported resolution of this entry is 2.54 Å.

Percentile scores (ranging between 0-100) for global validation metrics of the entry are shown in the following graphic. The table shows the number of entries on which the scores are based.



Metric	Whole archive (#Entries)	Similar resolution (#Entries, resolution range(Å))
$R_{free}$	130704	1284 (2.56-2.52)
Clashscore	141614	1332 (2.56-2.52)
Ramachandran outliers	138981	1315 (2.56-2.52)
Sidechain outliers	138945	1315 (2.56-2.52)
RSRZ outliers	127900	1272 (2.56-2.52)

The table below summarises the geometric issues observed across the polymeric chains and their fit to the electron density. The red, orange, yellow and green segments of the lower bar indicate the fraction of residues that contain outliers for  $\geq 3$ , 2, 1 and 0 types of geometric quality criteria respectively. A grey segment represents the fraction of residues that are not modelled. The numeric value for each fraction is indicated below the corresponding segment, with a dot representing fractions  $\leq 5\%$ . The upper red bar (where present) indicates the fraction of residues that have poor fit to the electron density. The numeric value is given above the bar.

Mol	Chain	Length	Quality of chain
1	AAA	139	
1	CCC	139	
2	BBB	145	
2	DDD	145	

## 2 Entry composition [i](#)

There are 5 unique types of molecules in this entry. The entry contains 4550 atoms, of which 0 are hydrogens and 0 are deuteriums.

In the tables below, the ZeroOcc column contains the number of atoms modelled with zero occupancy, the AltConf column contains the number of residues with at least one atom in alternate conformation and the Trace column contains the number of residues modelled with at most 2 atoms.

- Molecule 1 is a protein called Hemoglobin subunit alpha.

Mol	Chain	Residues	Atoms					ZeroOcc	AltConf	Trace
1	AAA	139	Total	C	N	O	S	0	0	0
			1050	674	182	191	3			
1	CCC	139	Total	C	N	O	S	0	0	0
			1050	674	182	191	3			

- Molecule 2 is a protein called Hemoglobin subunit beta.

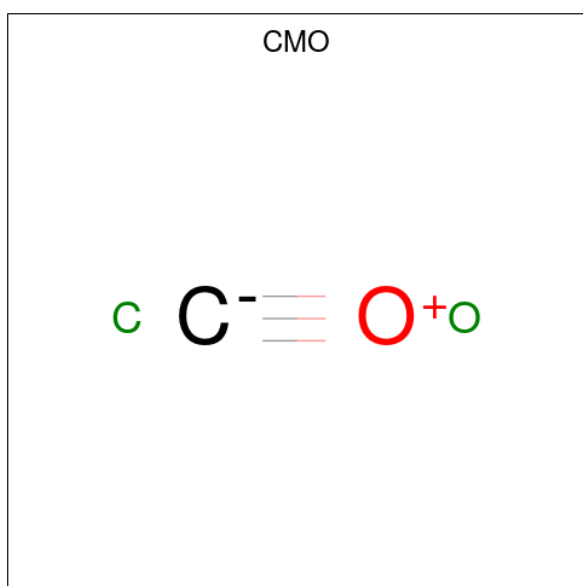
Mol	Chain	Residues	Atoms					ZeroOcc	AltConf	Trace
2	BBB	145	Total	C	N	O	S	0	0	0
			1116	719	194	200	3			
2	DDD	145	Total	C	N	O	S	0	0	0
			1116	719	194	200	3			

- Molecule 3 is PROTOPORPHYRIN IX CONTAINING FE (three-letter code: HEM) (formula:  $C_{34}H_{32}FeN_4O_4$ ).



Mol	Chain	Residues	Atoms					ZeroOcc	AltConf
3	AAA	1	Total	C	Fe	N	O	0	0
			43	34	1	4	4		
3	BBB	1	Total	C	Fe	N	O	0	0
			43	34	1	4	4		
3	CCC	1	Total	C	Fe	N	O	0	0
			43	34	1	4	4		
3	DDD	1	Total	C	Fe	N	O	0	0
			43	34	1	4	4		

- Molecule 4 is CARBON MONOXIDE (three-letter code: CMO) (formula: CO).



Mol	Chain	Residues	Atoms			ZeroOcc	AltConf
4	AAA	1	Total	C	O	0	0
			2	1	1		
4	BBB	1	Total	C	O	0	0
			2	1	1		
4	CCC	1	Total	C	O	0	0
			2	1	1		
4	DDD	1	Total	C	O	0	0
			2	1	1		

- Molecule 5 is water.

Mol	Chain	Residues	Atoms		ZeroOcc	AltConf
5	AAA	14	Total	O	0	0
			14	14		
5	BBB	11	Total	O	0	0
			11	11		

*Continued on next page...*

*Continued from previous page...*

Mol	Chain	Residues	Atoms		ZeroOcc	AltConf
5	CCC	7	Total	O	0	0
			7	7		
5	DDD	6	Total	O	0	0
			6	6		

### 3 Residue-property plots [i](#)

These plots are drawn for all protein, RNA, DNA and oligosaccharide chains in the entry. The first graphic for a chain summarises the proportions of the various outlier classes displayed in the second graphic. The second graphic shows the sequence view annotated by issues in geometry and electron density. Residues are color-coded according to the number of geometric quality criteria for which they contain at least one outlier: green = 0, yellow = 1, orange = 2 and red = 3 or more. A red dot above a residue indicates a poor fit to the electron density ( $RSRZ > 2$ ). Stretches of 2 or more consecutive residues without any outlier are shown as a green connector. Residues present in the sample, but not in the model, are shown in grey.

- Molecule 1: Hemoglobin subunit alpha

Chain AAA:  97% .



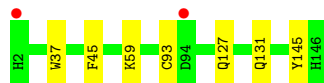
- Molecule 1: Hemoglobin subunit alpha

Chain CCC:  96% .



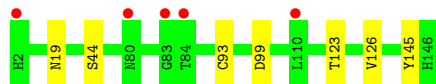
- Molecule 2: Hemoglobin subunit beta

Chain BBB:  95% 5%



- Molecule 2: Hemoglobin subunit beta

Chain DDD:  95% 5%



## 4 Data and refinement statistics

Property	Value	Source
Space group	P 21 21 21	Depositor
Cell constants a, b, c, $\alpha$ , $\beta$ , $\gamma$	55.70Å 158.10Å 67.70Å 90.00° 90.00° 90.00°	Depositor
Resolution (Å)	28.06 – 2.54 28.48 – 2.54	Depositor EDS
% Data completeness (in resolution range)	97.6 (28.06-2.54) 99.9 (28.48-2.54)	Depositor EDS
$R_{merge}$	(Not available)	Depositor
$R_{sym}$	(Not available)	Depositor
$\langle I/\sigma(I) \rangle$ <sup>1</sup>	1.41 (at 2.54Å)	Xtriage
Refinement program	REFMAC 5.8.0258	Depositor
R, $R_{free}$	0.207 , 0.273 0.212 , 0.277	Depositor DCC
$R_{free}$ test set	1043 reflections (5.12%)	wwPDB-VP
Wilson B-factor (Å <sup>2</sup> )	46.2	Xtriage
Anisotropy	0.251	Xtriage
Bulk solvent $k_{sol}$ (e/Å <sup>3</sup> ), $B_{sol}$ (Å <sup>2</sup> )	0.31 , 37.8	EDS
L-test for twinning <sup>2</sup>	$\langle  L  \rangle = 0.46$ , $\langle L^2 \rangle = 0.29$	Xtriage
Estimated twinning fraction	No twinning to report.	Xtriage
$F_o, F_c$ correlation	0.94	EDS
Total number of atoms	4550	wwPDB-VP
Average B, all atoms (Å <sup>2</sup> )	47.0	wwPDB-VP

Xtriage's analysis on translational NCS is as follows: *The largest off-origin peak in the Patterson function is 8.85% of the height of the origin peak. No significant pseudotranslation is detected.*

<sup>1</sup>Intensities estimated from amplitudes.

<sup>2</sup>Theoretical values of  $\langle |L| \rangle$ ,  $\langle L^2 \rangle$  for acentric reflections are 0.5, 0.333 respectively for untwinned datasets, and 0.375, 0.2 for perfectly twinned datasets.

## 5 Model quality [i](#)

### 5.1 Standard geometry [i](#)

Bond lengths and bond angles in the following residue types are not validated in this section: HEM, CMO

The Z score for a bond length (or angle) is the number of standard deviations the observed value is removed from the expected value. A bond length (or angle) with  $|Z| > 5$  is considered an outlier worth inspection. RMSZ is the root-mean-square of all Z scores of the bond lengths (or angles).

Mol	Chain	Bond lengths		Bond angles	
		RMSZ	$\# Z  > 5$	RMSZ	$\# Z  > 5$
1	AAA	0.71	0/1078	0.79	0/1467
1	CCC	0.74	0/1078	0.81	0/1467
2	BBB	0.71	0/1146	0.80	0/1556
2	DDD	0.73	0/1146	0.80	0/1556
All	All	0.72	0/4448	0.80	0/6046

There are no bond length outliers.

There are no bond angle outliers.

There are no chirality outliers.

There are no planarity outliers.

### 5.2 Too-close contacts [i](#)

In the following table, the Non-H and H(model) columns list the number of non-hydrogen atoms and hydrogen atoms in the chain respectively. The H(added) column lists the number of hydrogen atoms added and optimized by MolProbity. The Clashes column lists the number of clashes within the asymmetric unit, whereas Symm-Clashes lists symmetry-related clashes.

Mol	Chain	Non-H	H(model)	H(added)	Clashes	Symm-Clashes
1	AAA	1050	0	1048	2	0
1	CCC	1050	0	1048	3	0
2	BBB	1116	0	1106	5	0
2	DDD	1116	0	1106	3	0
3	AAA	43	0	30	1	0
3	BBB	43	0	30	2	0
3	CCC	43	0	30	0	0
3	DDD	43	0	30	1	0
4	AAA	2	0	0	0	0

*Continued on next page...*



*Continued from previous page...*

Mol	Chain	Non-H	H(model)	H(added)	Clashes	Symm-Clashes
4	BBB	2	0	0	0	0
4	CCC	2	0	0	0	0
4	DDD	2	0	0	0	0
5	AAA	14	0	0	0	0
5	BBB	11	0	0	0	0
5	CCC	7	0	0	0	0
5	DDD	6	0	0	0	0
All	All	4550	0	4428	15	0

The all-atom clashscore is defined as the number of clashes found per 1000 atoms (including hydrogen atoms). The all-atom clashscore for this structure is 2.

All (15) close contacts within the same asymmetric unit are listed below, sorted by their clash magnitude.

Atom-1	Atom-2	Interatomic distance (Å)	Clash overlap (Å)
3:BBB:201:HEM:HBC2	3:BBB:201:HEM:HMC1	1.78	0.65
1:CCC:75:ASP:OD1	1:CCC:78:ASN:ND2	2.30	0.64
2:BBB:45:PHE:HA	2:BBB:59:LYS:HD3	1.84	0.59
2:BBB:127:GLN:HE21	2:BBB:131:GLN:HE21	1.51	0.58
2:BBB:93:CYS:SG	2:BBB:145:TYR:CE2	2.94	0.52
1:CCC:73:VAL:HA	1:CCC:76:MET:HE3	1.91	0.52
2:DDD:93:CYS:SG	2:DDD:145:TYR:CE2	3.03	0.52
3:BBB:201:HEM:HBC2	3:BBB:201:HEM:CMC	2.40	0.50
1:AAA:96:VAL:HG11	2:DDD:99:ASP:CG	2.34	0.47
3:DDD:201:HEM:HMC1	3:DDD:201:HEM:HBC2	1.96	0.46
2:BBB:37:TRP:HA	1:CCC:92:ARG:HB3	1.98	0.46
1:AAA:76:MET:N	1:AAA:77:PRO:CD	2.79	0.46
2:DDD:123:THR:OG1	2:DDD:126:VAL:HG23	2.20	0.42
2:BBB:127:GLN:HE21	2:BBB:131:GLN:NE2	2.17	0.41
3:AAA:201:HEM:HBC2	3:AAA:201:HEM:CMC	2.51	0.41

There are no symmetry-related clashes.

## 5.3 Torsion angles [i](#)

### 5.3.1 Protein backbone [i](#)

In the following table, the Percentiles column shows the percent Ramachandran outliers of the chain as a percentile score with respect to all X-ray entries followed by that with respect to entries of similar resolution.

The Analysed column shows the number of residues for which the backbone conformation was analysed, and the total number of residues.

Mol	Chain	Analysed	Favoured	Allowed	Outliers	Percentiles	
1	AAA	137/139 (99%)	132 (96%)	5 (4%)	0	100	100
1	CCC	137/139 (99%)	133 (97%)	4 (3%)	0	100	100
2	BBB	143/145 (99%)	137 (96%)	6 (4%)	0	100	100
2	DDD	143/145 (99%)	138 (96%)	4 (3%)	1 (1%)	22	30
All	All	560/568 (99%)	540 (96%)	19 (3%)	1 (0%)	47	60

All (1) Ramachandran outliers are listed below:

Mol	Chain	Res	Type
2	DDD	19	ASN

### 5.3.2 Protein sidechains ⓘ

In the following table, the Percentiles column shows the percent sidechain outliers of the chain as a percentile score with respect to all X-ray entries followed by that with respect to entries of similar resolution.

The Analysed column shows the number of residues for which the sidechain conformation was analysed, and the total number of residues.

Mol	Chain	Analysed	Rotameric	Outliers	Percentiles	
1	AAA	111/111 (100%)	110 (99%)	1 (1%)	78	86
1	CCC	111/111 (100%)	111 (100%)	0	100	100
2	BBB	117/117 (100%)	117 (100%)	0	100	100
2	DDD	117/117 (100%)	116 (99%)	1 (1%)	78	86
All	All	456/456 (100%)	454 (100%)	2 (0%)	91	95

All (2) residues with a non-rotameric sidechain are listed below:

Mol	Chain	Res	Type
1	AAA	52	SER
2	DDD	44	SER

Sometimes sidechains can be flipped to improve hydrogen bonding and reduce clashes. There are no such sidechains identified.

### 5.3.3 RNA ⓘ

There are no RNA molecules in this entry.

## 5.4 Non-standard residues in protein, DNA, RNA chains ⓘ

There are no non-standard protein/DNA/RNA residues in this entry.

## 5.5 Carbohydrates ⓘ

There are no monosaccharides in this entry.

## 5.6 Ligand geometry ⓘ

8 ligands are modelled in this entry.

In the following table, the Counts columns list the number of bonds (or angles) for which Mogul statistics could be retrieved, the number of bonds (or angles) that are observed in the model and the number of bonds (or angles) that are defined in the Chemical Component Dictionary. The Link column lists molecule types, if any, to which the group is linked. The Z score for a bond length (or angle) is the number of standard deviations the observed value is removed from the expected value. A bond length (or angle) with  $|Z| > 2$  is considered an outlier worth inspection. RMSZ is the root-mean-square of all Z scores of the bond lengths (or angles).

Mol	Type	Chain	Res	Link	Bond lengths			Bond angles		
					Counts	RMSZ	$\# Z  > 2$	Counts	RMSZ	$\# Z  > 2$
4	CMO	DDD	202	-	0,1,1	-	-	-		
3	HEM	BBB	201	2	42,50,50	1.34	6 (14%)	46,82,82	1.77	11 (23%)
4	CMO	AAA	202	-	0,1,1	-	-	-		
3	HEM	CCC	201	1	42,50,50	1.29	7 (16%)	46,82,82	1.81	12 (26%)
3	HEM	DDD	201	2	42,50,50	1.28	4 (9%)	46,82,82	1.79	15 (32%)
3	HEM	AAA	201	1	42,50,50	1.33	6 (14%)	46,82,82	1.82	10 (21%)
4	CMO	CCC	202	-	0,1,1	-	-	-		
4	CMO	BBB	202	-	0,1,1	-	-	-		

In the following table, the Chirals column lists the number of chiral outliers, the number of chiral centers analysed, the number of these observed in the model and the number defined in the Chemical Component Dictionary. Similar counts are reported in the Torsion and Rings columns. '-' means no outliers of that kind were identified.

Mol	Type	Chain	Res	Link	Chirals	Torsions	Rings
3	HEM	AAA	201	1	-	4/12/54/54	-

*Continued on next page...*

*Continued from previous page...*

Mol	Type	Chain	Res	Link	Chirals	Torsions	Rings
3	HEM	BBB	201	2	-	2/12/54/54	-
3	HEM	CCC	201	1	-	4/12/54/54	-
3	HEM	DDD	201	2	-	5/12/54/54	-

All (23) bond length outliers are listed below:

Mol	Chain	Res	Type	Atoms	Z	Observed(Å)	Ideal(Å)
3	DDD	201	HEM	C3B-C4B	3.37	1.51	1.44
3	AAA	201	HEM	C3B-C4B	2.98	1.50	1.44
3	BBB	201	HEM	CHB-C1B	2.96	1.41	1.34
3	BBB	201	HEM	C1B-NB	-2.94	1.35	1.40
3	DDD	201	HEM	CHB-C1B	2.77	1.41	1.34
3	CCC	201	HEM	C3B-C4B	2.69	1.50	1.44
3	CCC	201	HEM	C1B-NB	-2.68	1.35	1.40
3	AAA	201	HEM	C1B-NB	-2.59	1.35	1.40
3	BBB	201	HEM	FE-NB	2.57	2.12	1.98
3	AAA	201	HEM	C4D-ND	-2.57	1.35	1.40
3	DDD	201	HEM	FE-NB	2.56	2.12	1.98
3	AAA	201	HEM	CHB-C1B	2.55	1.40	1.34
3	CCC	201	HEM	CHB-C1B	2.50	1.40	1.34
3	DDD	201	HEM	C1B-NB	-2.49	1.35	1.40
3	BBB	201	HEM	CHA-C4D	2.47	1.40	1.34
3	AAA	201	HEM	FE-NB	2.39	2.11	1.98
3	CCC	201	HEM	CHA-C4D	2.16	1.39	1.34
3	CCC	201	HEM	FE-NB	2.11	2.09	1.98
3	CCC	201	HEM	C4B-NB	-2.11	1.34	1.38
3	BBB	201	HEM	C3B-C4B	2.08	1.49	1.44
3	AAA	201	HEM	CHA-C4D	2.06	1.39	1.34
3	CCC	201	HEM	C1D-C2D	2.06	1.48	1.44
3	BBB	201	HEM	C3C-C2C	-2.05	1.37	1.40

All (48) bond angle outliers are listed below:

Mol	Chain	Res	Type	Atoms	Z	Observed(°)	Ideal(°)
3	AAA	201	HEM	CHC-C4B-NB	5.65	130.51	124.44
3	BBB	201	HEM	CHC-C4B-NB	5.41	130.25	124.44
3	CCC	201	HEM	CHC-C4B-NB	4.81	129.61	124.44
3	AAA	201	HEM	C1B-NB-C4B	4.19	110.17	105.21
3	BBB	201	HEM	C1B-NB-C4B	3.93	109.86	105.21
3	CCC	201	HEM	C1B-NB-C4B	3.92	109.84	105.21
3	AAA	201	HEM	CHD-C1D-ND	3.50	128.20	124.44

*Continued on next page...*

*Continued from previous page...*

Mol	Chain	Res	Type	Atoms	Z	Observed(°)	Ideal(°)
3	DDD	201	HEM	C1B-NB-C4B	3.45	109.29	105.21
3	AAA	201	HEM	C3B-C4B-NB	-3.33	107.08	109.47
3	AAA	201	HEM	CHB-C1B-NB	3.32	128.49	124.37
3	CCC	201	HEM	CHD-C1D-ND	3.23	127.91	124.44
3	DDD	201	HEM	CHD-C1D-ND	3.09	127.76	124.44
3	DDD	201	HEM	CHA-C4D-ND	3.03	128.12	124.37
3	CCC	201	HEM	CHA-C4D-ND	3.01	128.11	124.37
3	DDD	201	HEM	C3B-C4B-NB	-2.98	107.33	109.47
3	CCC	201	HEM	CHB-C1B-NB	2.84	127.89	124.37
3	CCC	201	HEM	C4B-C3B-C2B	-2.78	104.72	107.28
3	DDD	201	HEM	CAB-C3B-C2B	-2.76	119.46	128.43
3	DDD	201	HEM	CHD-C1D-C2D	-2.75	120.69	125.03
3	BBB	201	HEM	CHB-C1B-NB	2.68	127.70	124.37
3	BBB	201	HEM	CHA-C4D-ND	2.67	127.68	124.37
3	DDD	201	HEM	O2D-CGD-CBD	2.67	122.42	114.00
3	AAA	201	HEM	CHA-C4D-ND	2.66	127.67	124.37
3	DDD	201	HEM	C3B-C2B-C1B	2.65	108.40	106.41
3	DDD	201	HEM	CHB-C1B-NB	2.57	127.56	124.37
3	BBB	201	HEM	C4A-C3A-C2A	2.52	108.75	107.00
3	DDD	201	HEM	O2D-CGD-O1D	-2.51	116.88	123.33
3	BBB	201	HEM	CHD-C1D-ND	2.51	127.13	124.44
3	BBB	201	HEM	CHA-C4D-C3D	-2.48	120.66	125.23
3	DDD	201	HEM	CAB-C3B-C4B	2.47	135.30	124.39
3	CCC	201	HEM	O2A-CGA-CBA	2.42	121.65	114.00
3	CCC	201	HEM	C4A-C3A-C2A	2.42	108.68	107.00
3	DDD	201	HEM	CHC-C4B-NB	2.38	126.99	124.44
3	BBB	201	HEM	O2A-CGA-CBA	2.37	121.47	114.00
3	CCC	201	HEM	O2D-CGD-O1D	-2.33	117.35	123.33
3	DDD	201	HEM	C4B-C3B-C2B	-2.30	105.16	107.28
3	AAA	201	HEM	CMA-C3A-C4A	-2.29	125.09	128.46
3	DDD	201	HEM	CHA-C4D-C3D	-2.29	121.01	125.23
3	CCC	201	HEM	CHA-C4D-C3D	-2.23	121.11	125.23
3	BBB	201	HEM	C4B-C3B-C2B	-2.20	105.25	107.28
3	AAA	201	HEM	CAD-C3D-C4D	2.16	128.45	124.70
3	AAA	201	HEM	C3C-C4C-NC	-2.15	106.89	110.94
3	BBB	201	HEM	O2D-CGD-CBD	2.14	120.77	114.00
3	BBB	201	HEM	C3B-C4B-NB	-2.12	107.94	109.47
3	CCC	201	HEM	O2D-CGD-CBD	2.11	120.68	114.00
3	CCC	201	HEM	CMA-C3A-C4A	-2.08	125.41	128.46
3	DDD	201	HEM	O2A-CGA-O1A	-2.04	118.08	123.33
3	AAA	201	HEM	CMA-C3A-C2A	2.03	128.77	124.94

There are no chirality outliers.

All (15) torsion outliers are listed below:

Mol	Chain	Res	Type	Atoms
3	DDD	201	HEM	C4B-C3B-CAB-CBB
3	DDD	201	HEM	CAD-CBD-CGD-O1D
3	CCC	201	HEM	CAD-CBD-CGD-O2D
3	CCC	201	HEM	CAD-CBD-CGD-O1D
3	DDD	201	HEM	CAD-CBD-CGD-O2D
3	BBB	201	HEM	CAD-CBD-CGD-O1D
3	CCC	201	HEM	CAA-CBA-CGA-O1A
3	AAA	201	HEM	CAD-CBD-CGD-O1D
3	BBB	201	HEM	CAD-CBD-CGD-O2D
3	AAA	201	HEM	CAD-CBD-CGD-O2D
3	CCC	201	HEM	CAA-CBA-CGA-O2A
3	AAA	201	HEM	CAA-CBA-CGA-O2A
3	DDD	201	HEM	CAA-CBA-CGA-O2A
3	AAA	201	HEM	CAA-CBA-CGA-O1A
3	DDD	201	HEM	CAA-CBA-CGA-O1A

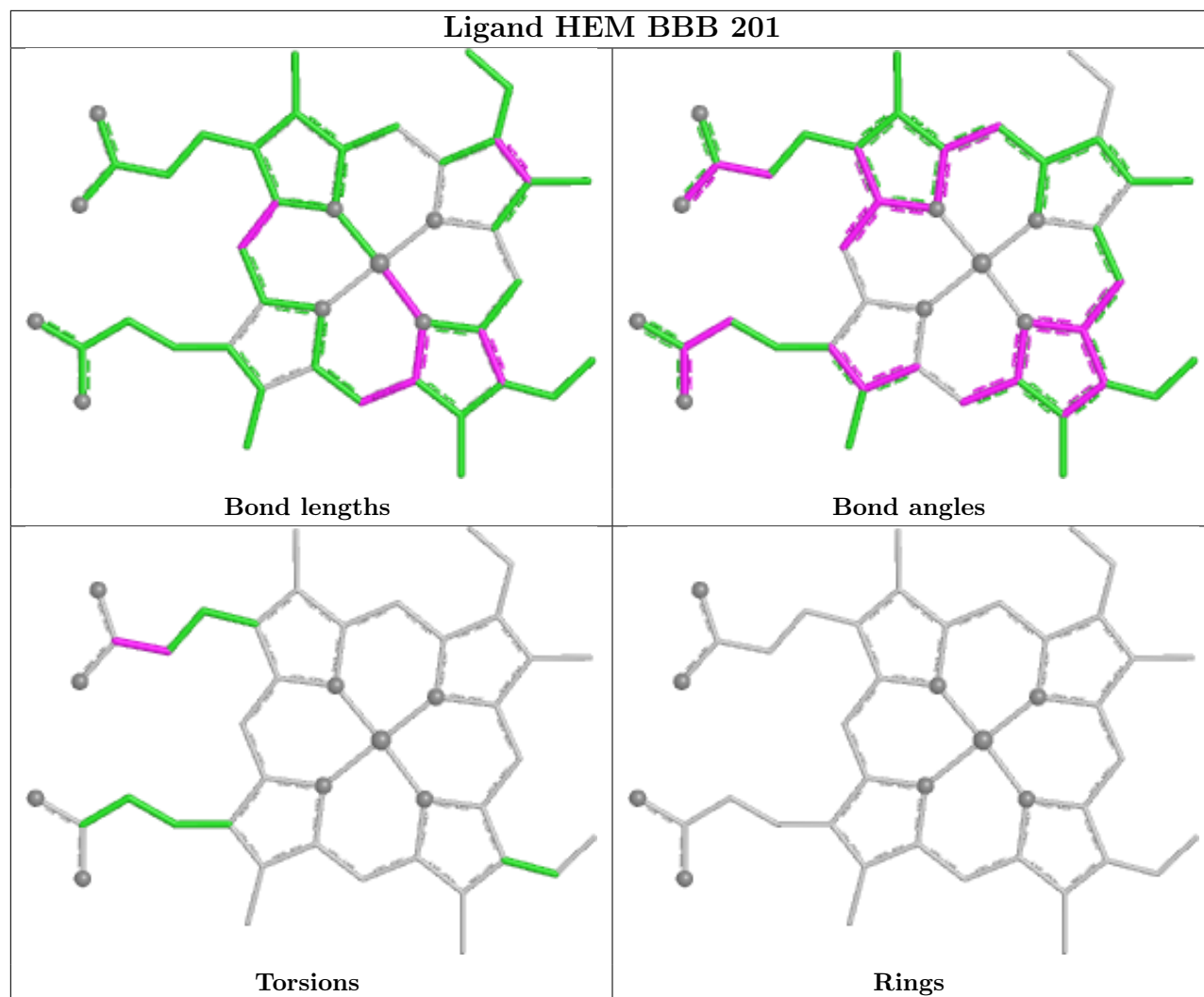
There are no ring outliers.

3 monomers are involved in 4 short contacts:

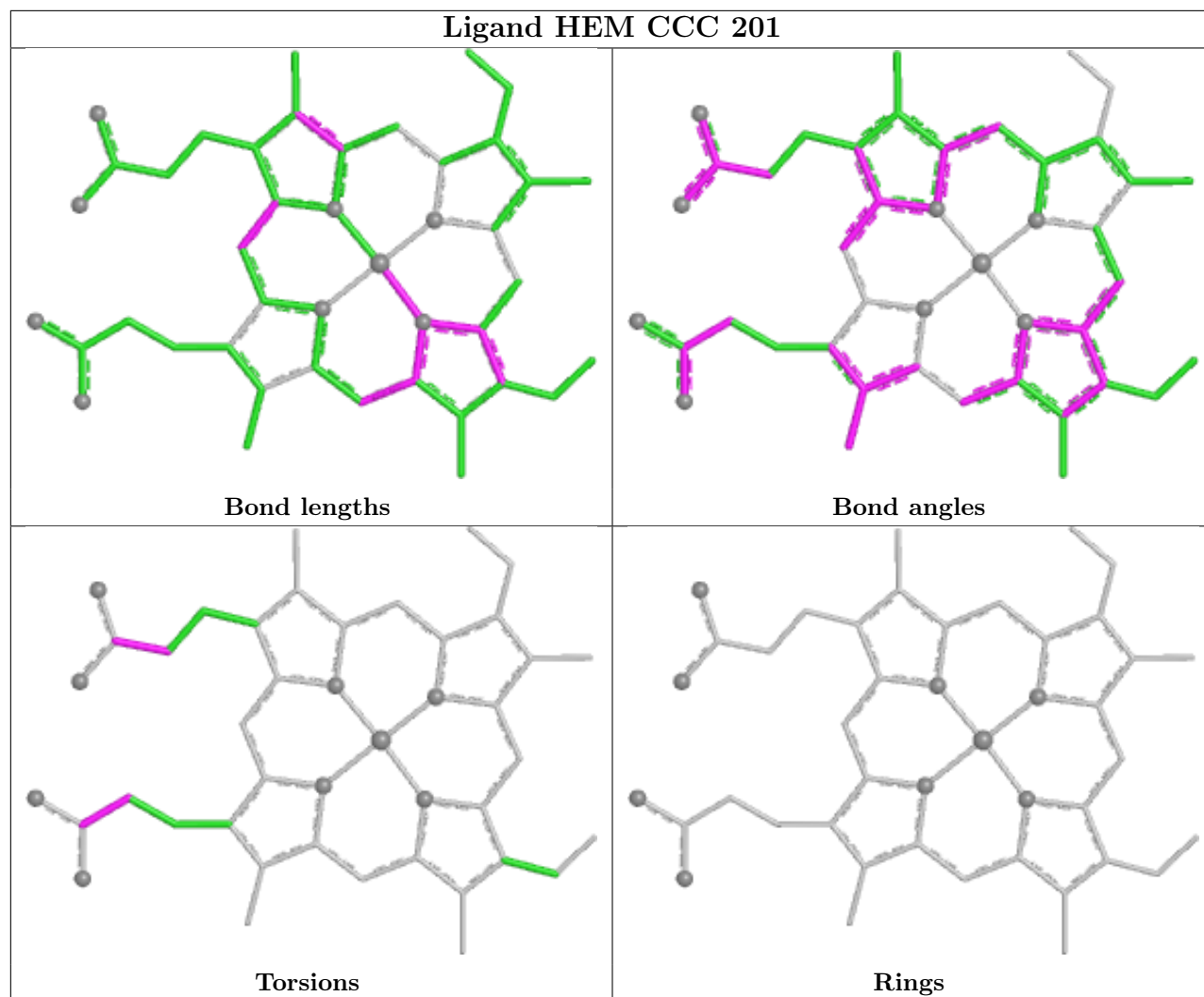
Mol	Chain	Res	Type	Clashes	Symm-Clashes
3	BBB	201	HEM	2	0
3	DDD	201	HEM	1	0
3	AAA	201	HEM	1	0

The following is a two-dimensional graphical depiction of Mogul quality analysis of bond lengths, bond angles, torsion angles, and ring geometry for all instances of the Ligand of Interest. In addition, ligands with molecular weight > 250 and outliers as shown on the validation Tables will also be included. For torsion angles, if less than 5% of the Mogul distribution of torsion angles is within 10 degrees of the torsion angle in question, then that torsion angle is considered an outlier. Any bond that is central to one or more torsion angles identified as an outlier by Mogul will be highlighted in the graph. For rings, the root-mean-square deviation (RMSD) between the ring in question and similar rings identified by Mogul is calculated over all ring torsion angles. If the average RMSD is greater than 60 degrees and the minimal RMSD between the ring in question and any Mogul-identified rings is also greater than 60 degrees, then that ring is considered an outlier. The outliers are highlighted in purple. The color gray indicates Mogul did not find sufficient equivalents in the CSD to analyse the geometry.

## Ligand HEM BBB 201

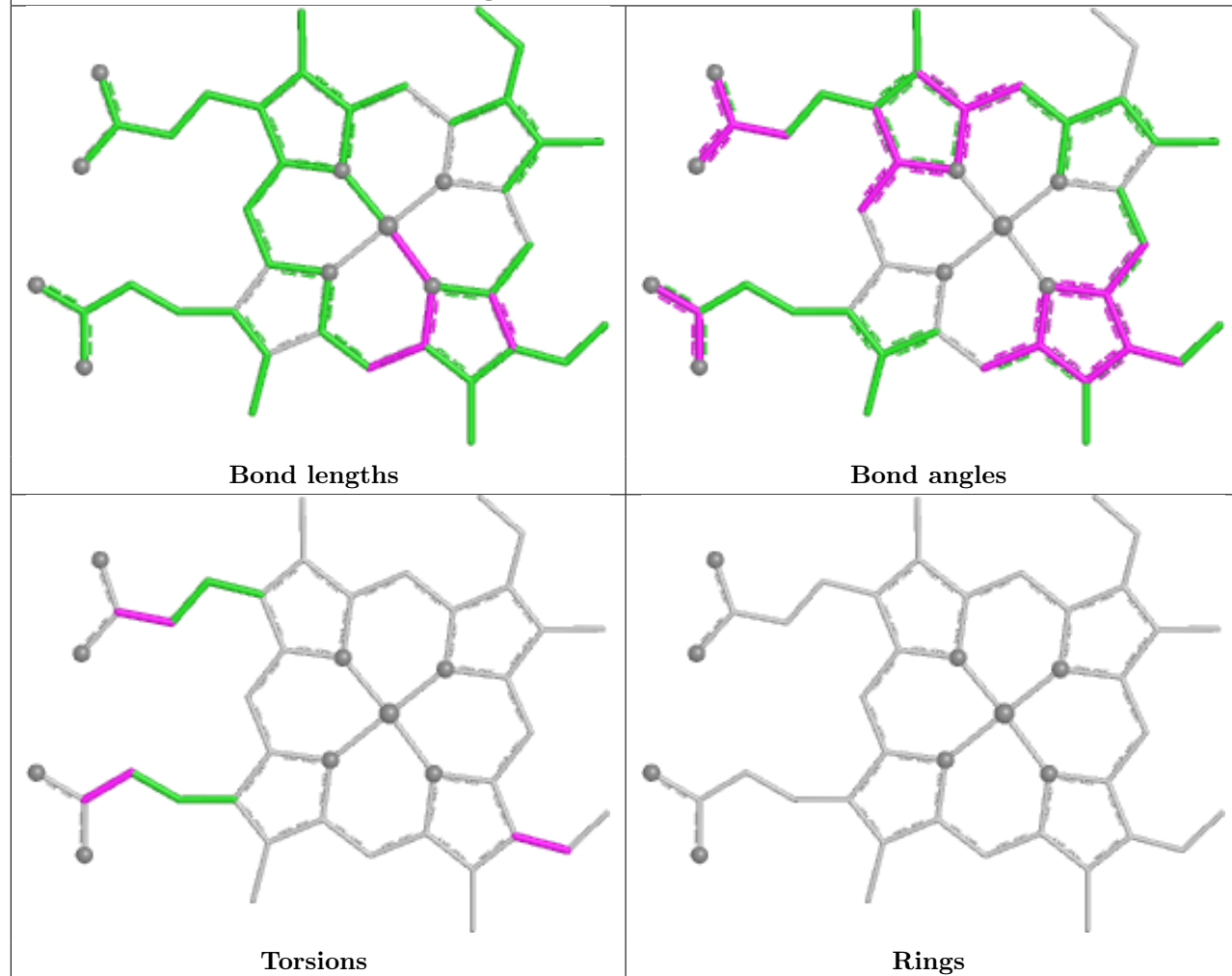


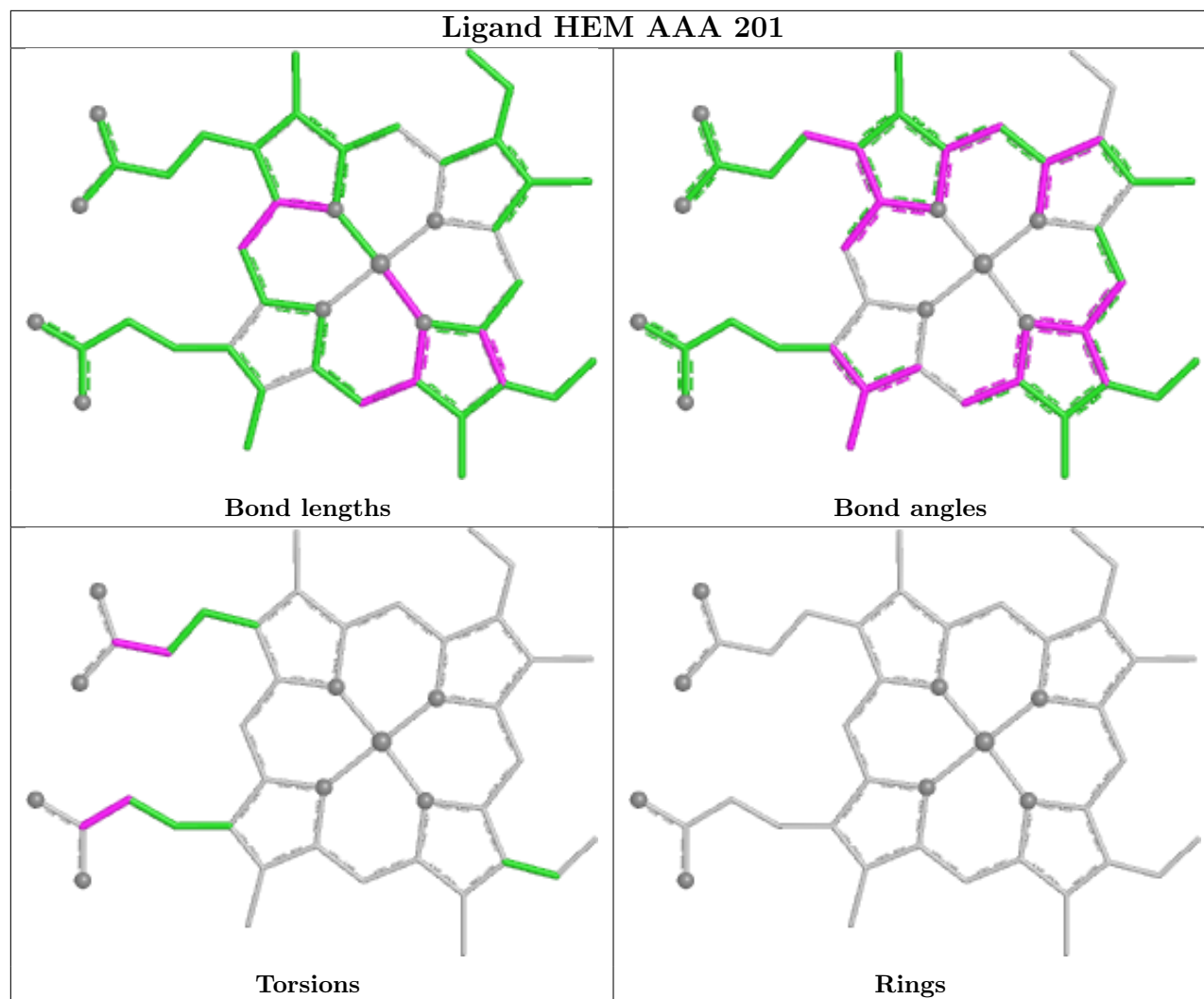
## Ligand HEM CCC 201





## Ligand HEM DDD 201





## 5.7 Other polymers [i](#)

There are no such residues in this entry.

## 5.8 Polymer linkage issues [i](#)

There are no chain breaks in this entry.

## 6 Fit of model and data [i](#)

### 6.1 Protein, DNA and RNA chains [i](#)

In the following table, the column labelled ‘#RSRZ> 2’ contains the number (and percentage) of RSRZ outliers, followed by percent RSRZ outliers for the chain as percentile scores relative to all X-ray entries and entries of similar resolution. The OWAB column contains the minimum, median, 95<sup>th</sup> percentile and maximum values of the occupancy-weighted average B-factor per residue. The column labelled ‘Q< 0.9’ lists the number of (and percentage) of residues with an average occupancy less than 0.9.

Mol	Chain	Analysed	<RSRZ>	#RSRZ>2	OWAB(Å <sup>2</sup> )	Q<0.9
1	AAA	139/139 (100%)	-0.40	0 100 100	26, 40, 59, 72	0
1	CCC	139/139 (100%)	-0.07	3 (2%) 62 68	28, 49, 71, 86	0
2	BBB	145/145 (100%)	-0.22	2 (1%) 75 81	25, 43, 67, 97	0
2	DDD	145/145 (100%)	0.18	5 (3%) 45 52	27, 53, 81, 98	0
All	All	568/568 (100%)	-0.13	10 (1%) 68 74	25, 46, 72, 98	0

All (10) RSRZ outliers are listed below:

Mol	Chain	Res	Type	RSRZ
1	CCC	81	SER	5.0
2	DDD	2	HIS	3.8
2	DDD	83	GLY	3.2
1	CCC	50	HIS	2.7
2	BBB	2	HIS	2.6
1	CCC	78	ASN	2.6
2	DDD	80	ASN	2.6
2	DDD	110	LEU	2.5
2	DDD	84	THR	2.3
2	BBB	94	ASP	2.2

### 6.2 Non-standard residues in protein, DNA, RNA chains [i](#)

There are no non-standard protein/DNA/RNA residues in this entry.

### 6.3 Carbohydrates [i](#)

There are no monosaccharides in this entry.

## 6.4 Ligands

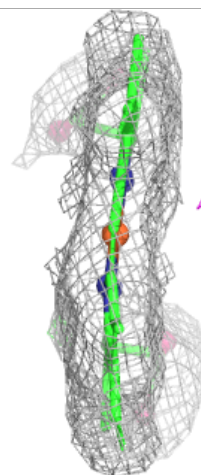
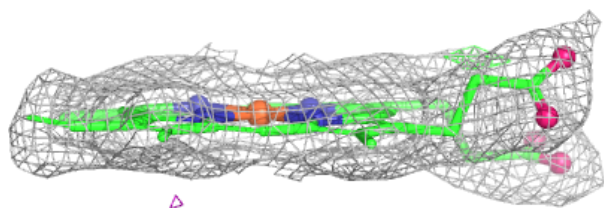
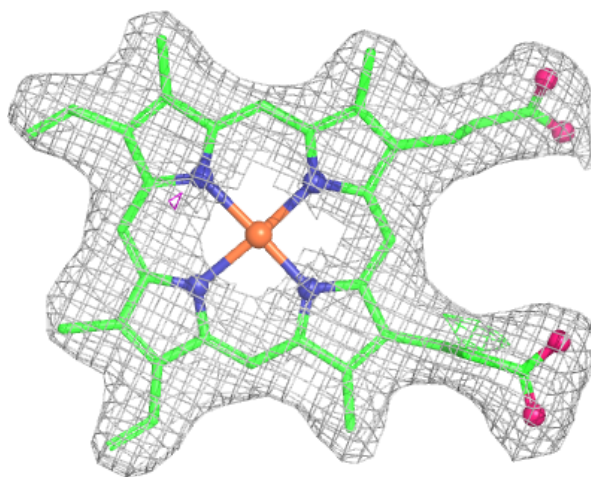
In the following table, the Atoms column lists the number of modelled atoms in the group and the number defined in the chemical component dictionary. The B-factors column lists the minimum, median, 95<sup>th</sup> percentile and maximum values of B factors of atoms in the group. The column labelled 'Q< 0.9' lists the number of atoms with occupancy less than 0.9.

Mol	Type	Chain	Res	Atoms	RSCC	RSR	B-factors( $\text{\AA}^2$ )	Q<0.9
3	HEM	DDD	201	43/43	0.95	0.12	38,44,52,58	0
3	HEM	BBB	201	43/43	0.96	0.12	36,41,47,56	0
3	HEM	CCC	201	43/43	0.96	0.11	31,40,46,55	0
3	HEM	AAA	201	43/43	0.96	0.10	28,34,45,53	0
4	CMO	AAA	202	2/2	0.98	0.13	29,29,29,30	0
4	CMO	CCC	202	2/2	0.98	0.12	36,36,36,39	0
4	CMO	DDD	202	2/2	0.98	0.10	41,41,41,42	0
4	CMO	BBB	202	2/2	0.99	0.09	37,37,37,43	0

The following is a graphical depiction of the model fit to experimental electron density of all instances of the Ligand of Interest. In addition, ligands with molecular weight > 250 and outliers as shown on the geometry validation Tables will also be included. Each fit is shown from different orientation to approximate a three-dimensional view.

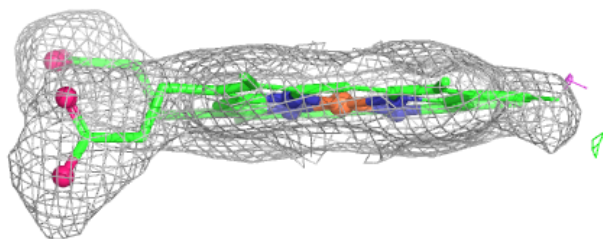
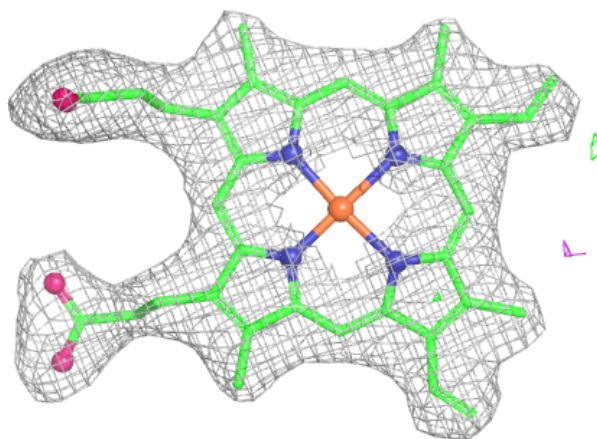
**Electron density around HEM DDD 201:**

$2mF_o-DF_c$  (at 0.7 rmsd) in gray  
 $mF_o-DF_c$  (at 3 rmsd) in purple (negative)  
and green (positive)



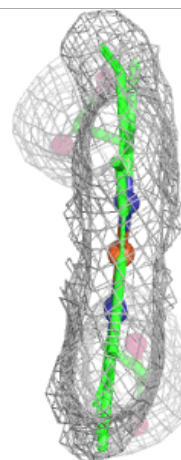
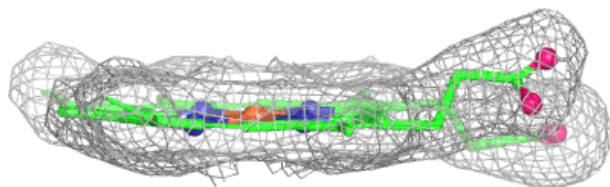
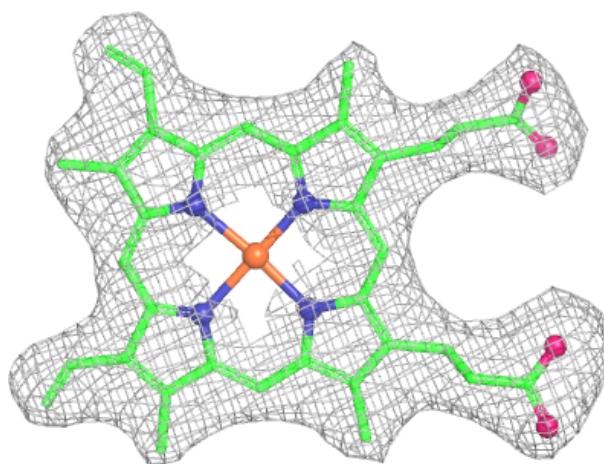
**Electron density around HEM BBB 201:**

$2mF_o - DF_c$  (at 0.7 rmsd) in gray  
 $mF_o - DF_c$  (at 3 rmsd) in purple (negative)  
and green (positive)



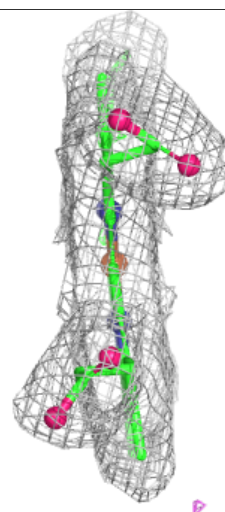
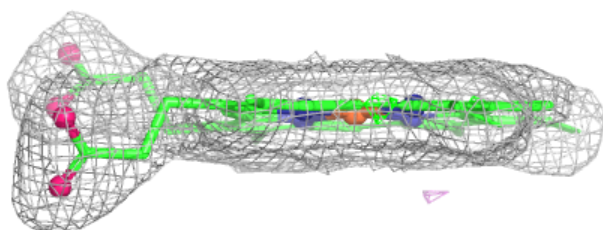
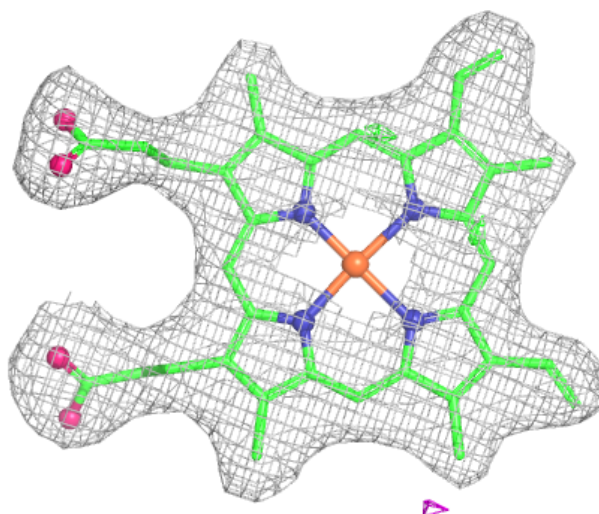
**Electron density around HEM CCC 201:**

$2mF_o-DF_c$  (at 0.7 rmsd) in gray  
 $mF_o-DF_c$  (at 3 rmsd) in purple (negative)  
and green (positive)



**Electron density around HEM AAA 201:**

$2mF_o-DF_c$  (at 0.7 rmsd) in gray  
 $mF_o-DF_c$  (at 3 rmsd) in purple (negative)  
and green (positive)



## 6.5 Other polymers ⓘ

There are no such residues in this entry.