



## Full wwPDB EM Validation Report ⓘ

Jul 15, 2024 – 06:50 pm BST

PDB ID : 8ACQ  
EMDB ID : EMD-14715  
Title : S-layer Deinoxanthin-Binding Complex (SDBC), subunit DR\_2577 assembled  
with its SOD DR\_0644  
Authors : Farci, D.; Piano, D.  
Deposited on : 2022-07-06  
Resolution : 2.54 Å(reported)

This is a Full wwPDB EM Validation Report for a publicly released PDB entry.

We welcome your comments at [validation@mail.wwpdb.org](mailto:validation@mail.wwpdb.org)

A user guide is available at

<https://www.wwpdb.org/validation/2017/EMValidationReportHelp>  
with specific help available everywhere you see the ⓘ symbol.

The types of validation reports are described at

<http://www.wwpdb.org/validation/2017/FAQs#types>.

---

The following versions of software and data (see [references ⓘ](#)) were used in the production of this report:

EMDB validation analysis : 0.0.1.dev92  
Mogul : 1.8.4, CSD as541be (2020)  
MolProbity : 4.02b-467  
buster-report : 1.1.7 (2018)  
Percentile statistics : 20191225.v01 (using entries in the PDB archive December 25th 2019)  
MapQ : 1.9.13  
Ideal geometry (proteins) : Engh & Huber (2001)  
Ideal geometry (DNA, RNA) : Parkinson et al. (1996)  
Validation Pipeline (wwPDB-VP) : 2.37.1

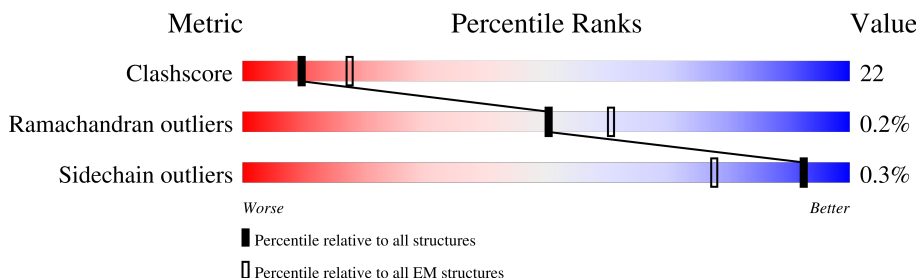
# 1 Overall quality at a glance

The following experimental techniques were used to determine the structure:

*ELECTRON MICROSCOPY*

The reported resolution of this entry is 2.54 Å.

Percentile scores (ranging between 0-100) for global validation metrics of the entry are shown in the following graphic. The table shows the number of entries on which the scores are based.



Metric	Whole archive (#Entries)	EM structures (#Entries)
Clashscore	158937	4297
Ramachandran outliers	154571	4023
Sidechain outliers	154315	3826

The table below summarises the geometric issues observed across the polymeric chains and their fit to the map. The red, orange, yellow and green segments of the bar indicate the fraction of residues that contain outliers for  $\geq 3$ , 2, 1 and 0 types of geometric quality criteria respectively. A grey segment represents the fraction of residues that are not modelled. The numeric value for each fraction is indicated below the corresponding segment, with a dot representing fractions  $\leq 5\%$ . The upper red bar (where present) indicates the fraction of residues that have poor fit to the EM map (all-atom inclusion  $< 40\%$ ). The numeric value is given above the bar.

Mol	Chain	Length	Quality of chain
1	A	1167	
1	B	1167	
1	C	1167	
2	H	206	
2	I	206	
2	L	206	

The following table lists non-polymeric compounds, carbohydrate monomers and non-standard residues in protein, DNA, RNA chains that are outliers for geometric or electron-density-fit criteria:

Mol	Type	Chain	Res	Chirality	Geometry	Clashes	Electron density
3	JPI	A	1201	X	-	-	-
3	JPI	B	1302	X	-	-	-
3	JPI	C	1201	X	-	-	-

## 2 Entry composition

There are 7 unique types of molecules in this entry. The entry contains 25170 atoms, of which 714 are hydrogens and 0 are deuteriums.

In the tables below, the AltConf column contains the number of residues with at least one atom in alternate conformation and the Trace column contains the number of residues modelled with at most 2 atoms.

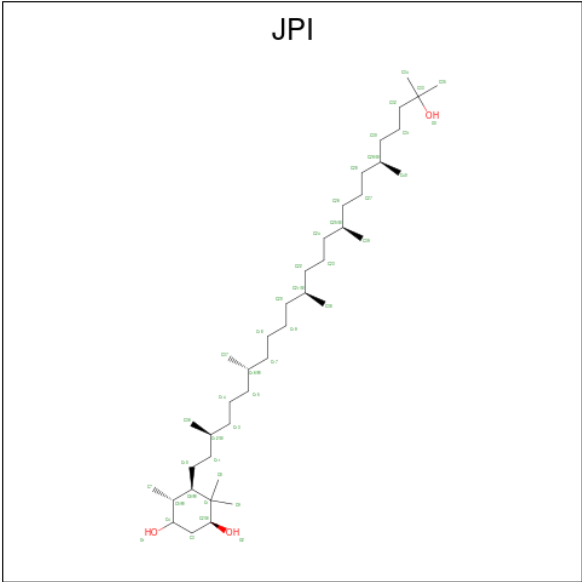
- Molecule 1 is a protein called S-layer protein SlpA.

Mol	Chain	Residues	Atoms					AltConf	Trace
1	A	949	Total	C	N	O	S	0	0
			7117	4415	1265	1431	6		
1	B	949	Total	C	N	O	S	0	0
			7117	4415	1265	1431	6		
1	C	949	Total	C	N	O	S	0	0
			7117	4415	1265	1431	6		

- Molecule 2 is a protein called DR\_0644, only-Cu Superoxide Dismutase.

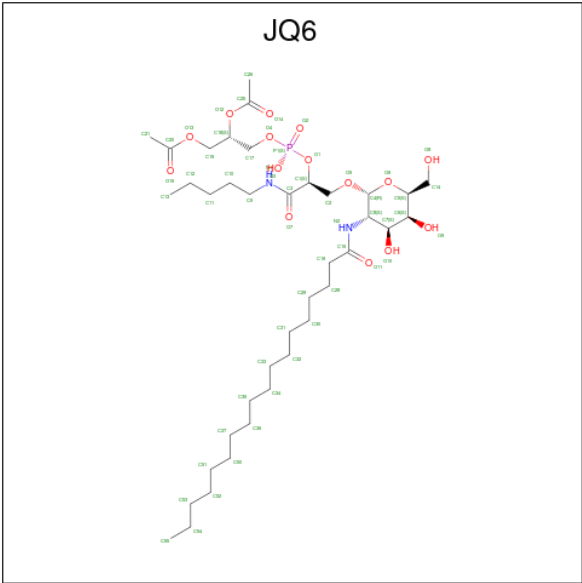
Mol	Chain	Residues	Atoms					AltConf	Trace
2	H	120	Total	C	N	O	S	0	0
			864	547	147	165	5		
2	I	120	Total	C	N	O	S	0	0
			864	547	147	165	5		
2	L	120	Total	C	N	O	S	0	0
			864	547	147	165	5		

- Molecule 3 is (3 {S},5 {R},6 {R})-5-[(3 {S},7 {R},12 {S},16 {S},20 {S})-3,7,12,16,20,24-hexamethyl-24-oxidanyl-pentacosyl]-4,4,6-trimethyl-cyclohexane-1,3-diol (three-letter code: JPI) (formula: C<sub>40</sub>H<sub>80</sub>O<sub>3</sub>) (labeled as "Ligand of Interest" by depositor).



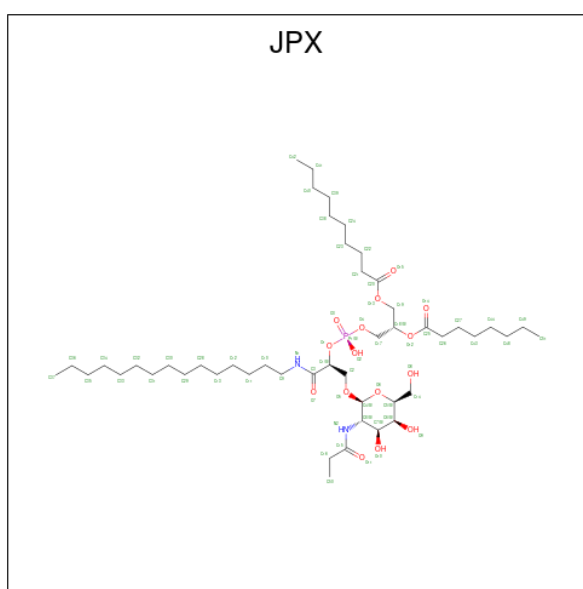
Mol	Chain	Residues	Atoms				AltConf
			Total	C	H	O	
3	A	1	119	40	76	3	0
3	B	1	119	40	76	3	0
3	C	1	119	40	76	3	0

- Molecule 4 is [(2 {S})-2-acetyloxy-3-[(2 {S})-3-[(2 {R},3 {S},4 {S},5 {S},6 {S})-6-(hydroxy methyl)-3-(octadecanoylamino)-4,5-bis(oxidanyl)oxan-2-yl]oxy-1-oxidanylidene-1-(pentyla mino)propan-2-yl]oxy-oxidanyl-phosphoryl]oxy-propyl] ethanoate (three-letter code: JQ6) (formula: C<sub>39</sub>H<sub>73</sub>N<sub>2</sub>O<sub>15</sub>P) (labeled as "Ligand of Interest" by depositor).



Mol	Chain	Residues	Atoms						AltConf
4	A	1	Total	C	H	N	O	P	0
			129	39	72	2	15	1	
4	B	1	Total	C	H	N	O	P	0
			129	39	72	2	15	1	
4	C	1	Total	C	H	N	O	P	0
			129	39	72	2	15	1	

- Molecule 5 is [(2 {S})-3-[[[(2 {S})-3-[(2 {S},3 {S},4 {S},5 {S},6 {S})-6-(hydroxymethyl)-4,5-bis(oxidanyl)-3-(propanoylamino)oxan-2-yl]oxy-1-oxidanylidene-1-(pentadecylamino)propan-2-yl]oxy-oxidanyl-phosphoryl]oxy-2-octanoyloxy-propyl] decanoate (three-letter code: JPX) (formula: C<sub>48</sub>H<sub>91</sub>N<sub>2</sub>O<sub>15</sub>P) (labeled as "Ligand of Interest" by depositor).



Mol	Chain	Residues	Atoms						AltConf
5	A	1	Total	C	H	N	O	P	0
			156	48	90	2	15	1	
5	B	1	Total	C	H	N	O	P	0
			156	48	90	2	15	1	
5	B	1	Total	C	H	N	O	P	0
			156	48	90	2	15	1	

- Molecule 6 is COPPER (II) ION (three-letter code: CU) (formula: Cu) (labeled as "Ligand of Interest" by depositor).

Mol	Chain	Residues	Atoms		AltConf
6	A	3	Total	Cu	0
			3	3	
6	B	3	Total	Cu	0
			3	3	

Continued on next page...

*Continued from previous page...*

Mol	Chain	Residues	Atoms		AltConf
6	C	3	Total 3	Cu 3	0
6	H	1	Total 1	Cu 1	0
6	I	1	Total 1	Cu 1	0
6	L	1	Total 1	Cu 1	0

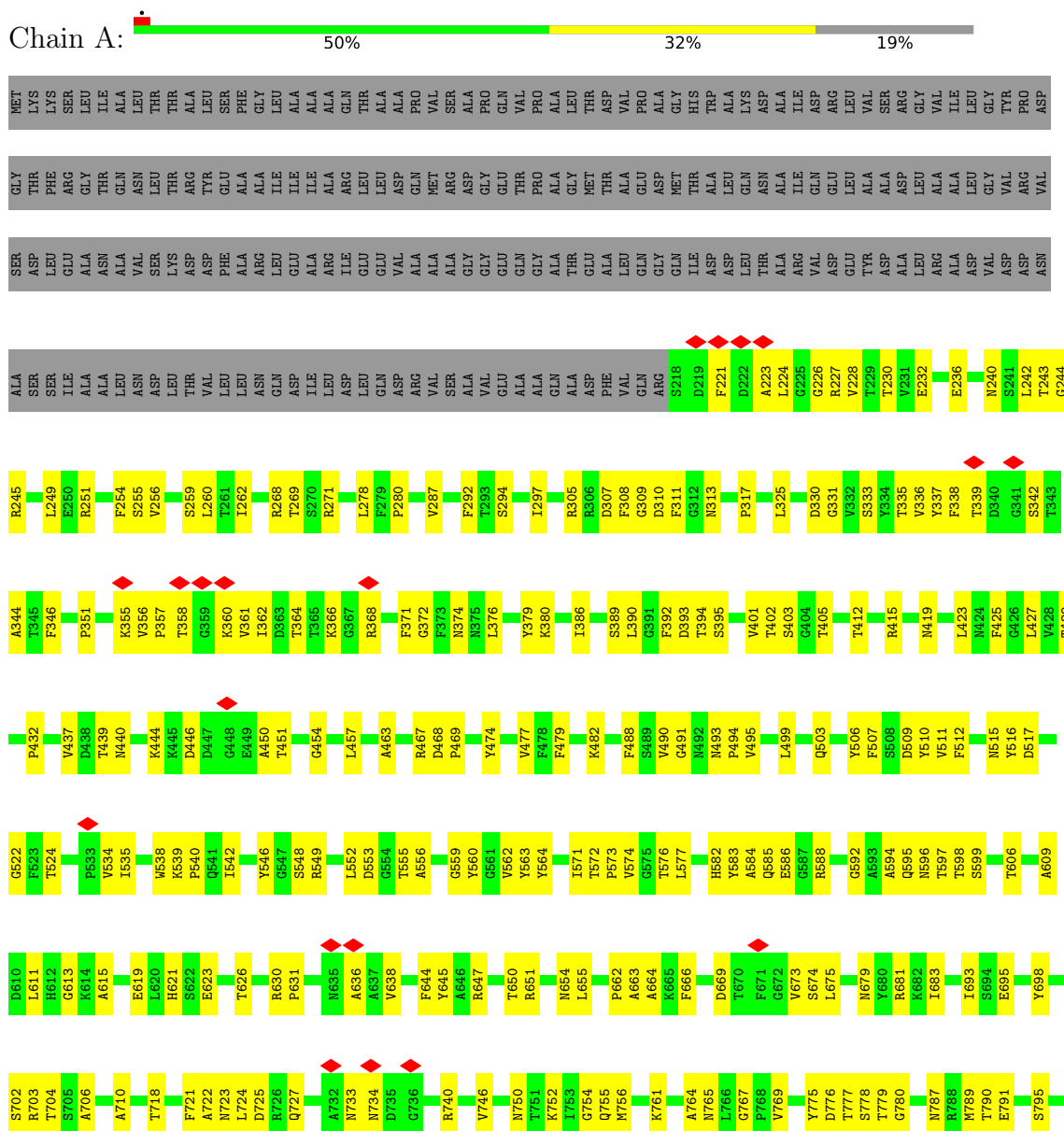
- Molecule 7 is FE (III) ION (three-letter code: FE) (formula: Fe) (labeled as "Ligand of Interest" by depositor).

Mol	Chain	Residues	Atoms		AltConf
7	A	1	Total 1	Fe 1	0
7	B	1	Total 1	Fe 1	0
7	C	1	Total 1	Fe 1	0

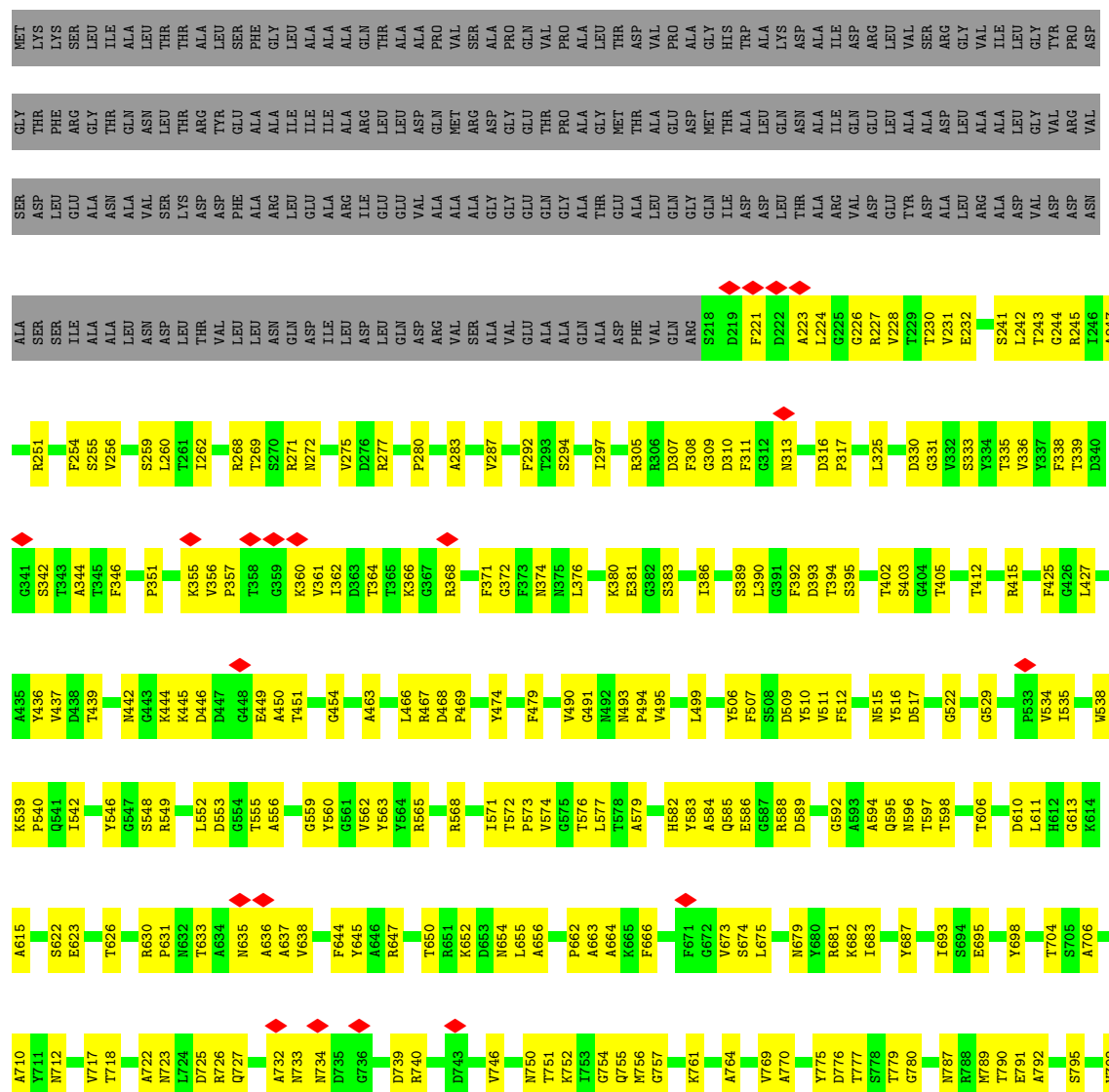
### 3 Residue-property plots

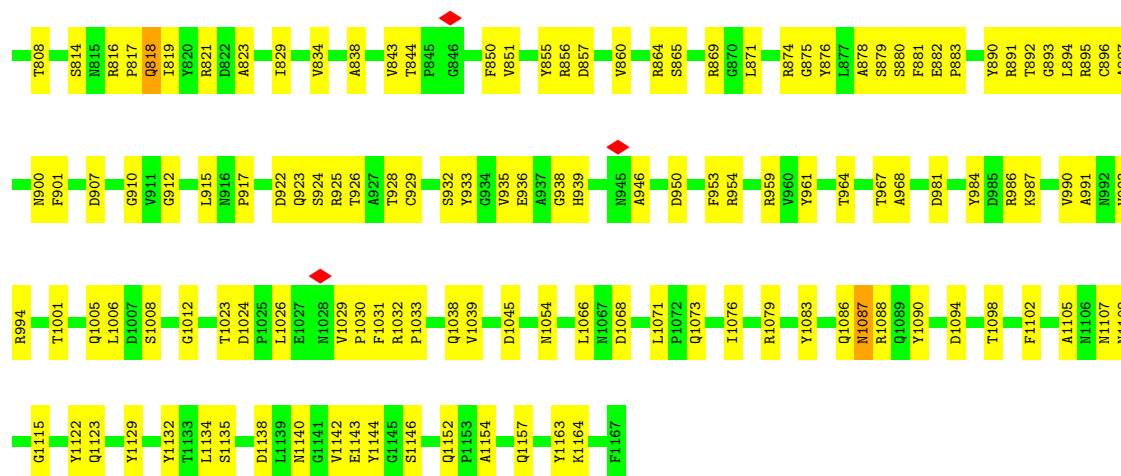
These plots are drawn for all protein, RNA, DNA and oligosaccharide chains in the entry. The first graphic for a chain summarises the proportions of the various outlier classes displayed in the second graphic. The second graphic shows the sequence view annotated by issues in geometry and atom inclusion in map density. Residues are color-coded according to the number of geometric quality criteria for which they contain at least one outlier: green = 0, yellow = 1, orange = 2 and red = 3 or more. A red diamond above a residue indicates a poor fit to the EM map for this residue (all-atom inclusion < 40%). Stretches of 2 or more consecutive residues without any outlier are shown as a green connector. Residues present in the sample, but not in the model, are shown in grey.

#### • Molecule 1: S-layer protein SlpA



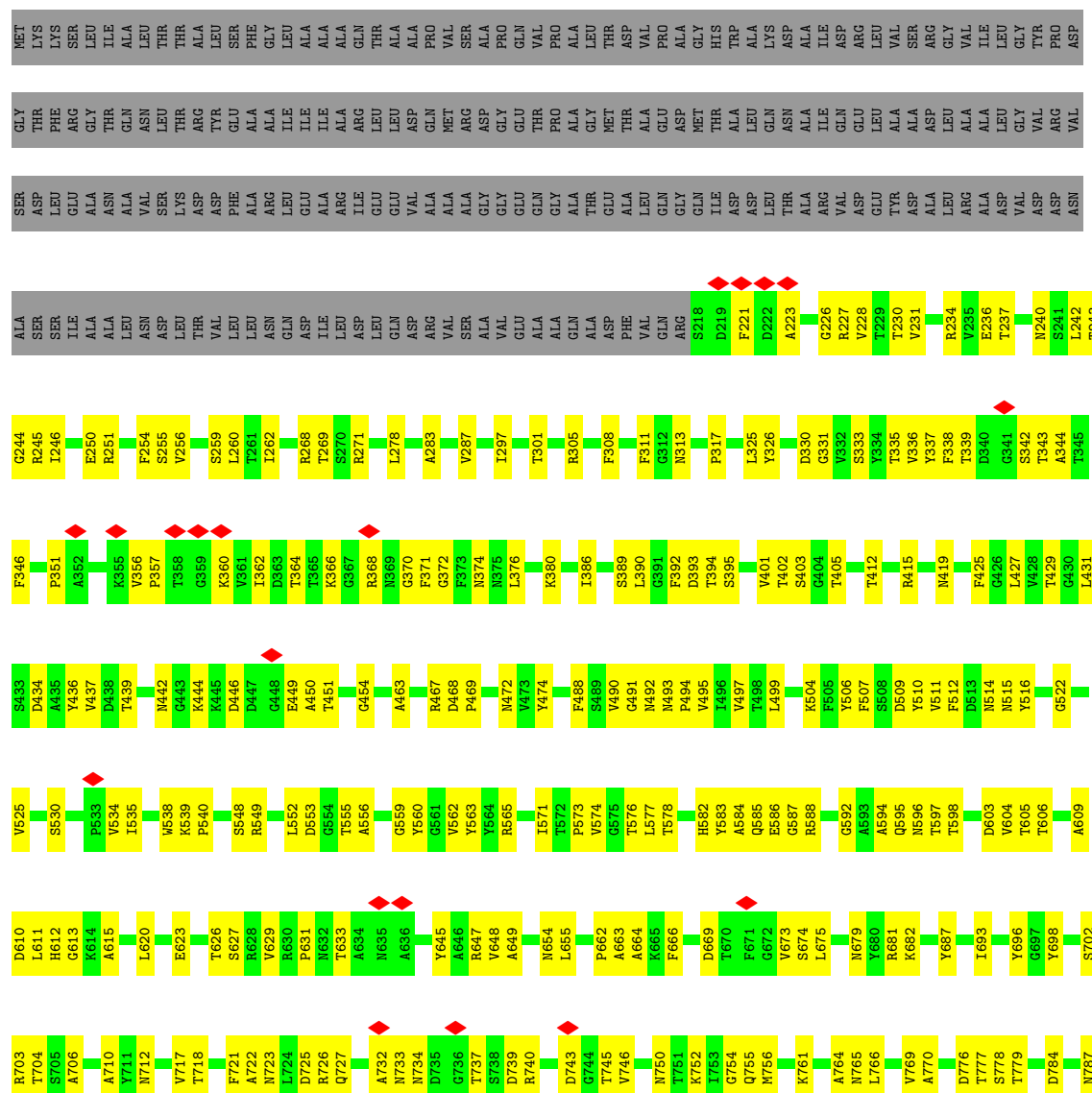


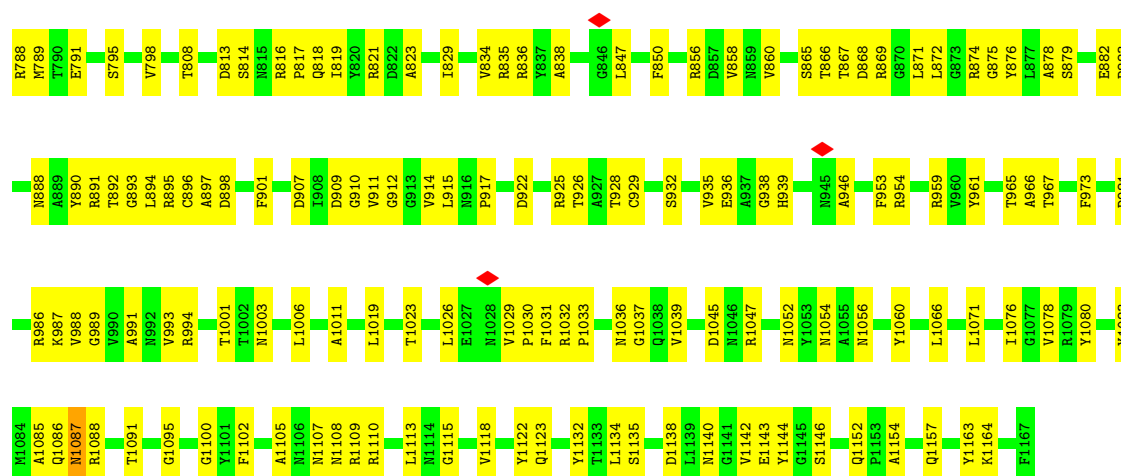




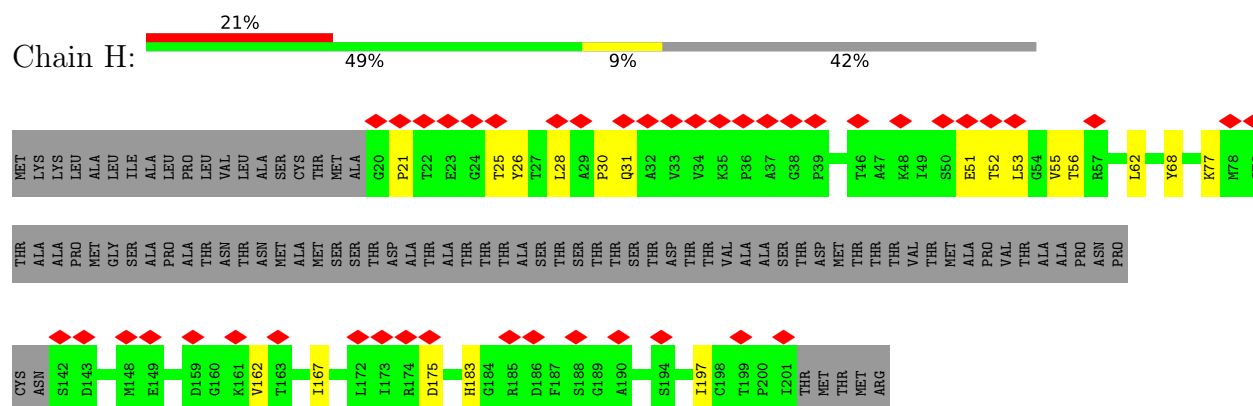
• Molecule 1: S-layer protein SlpA

Chain C: 49% 32% 19%

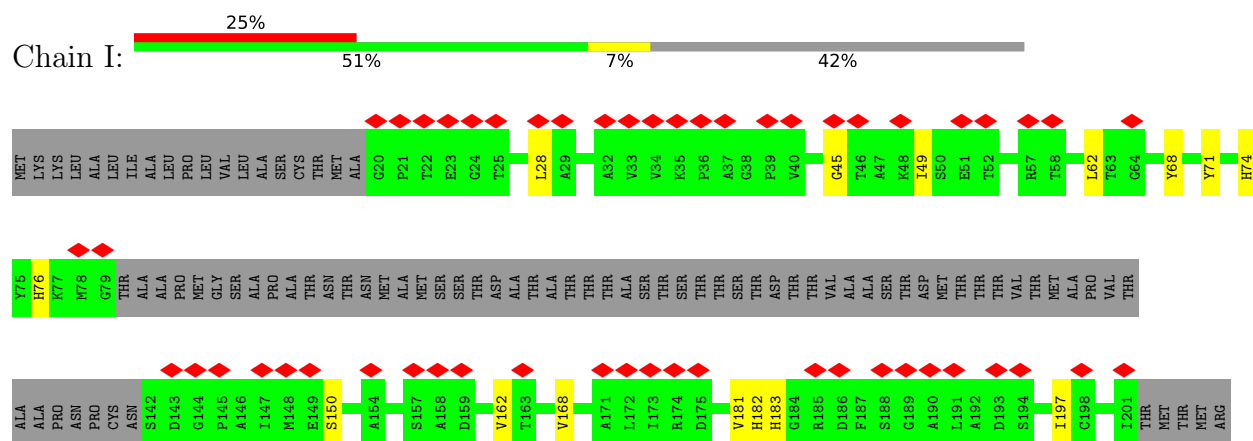




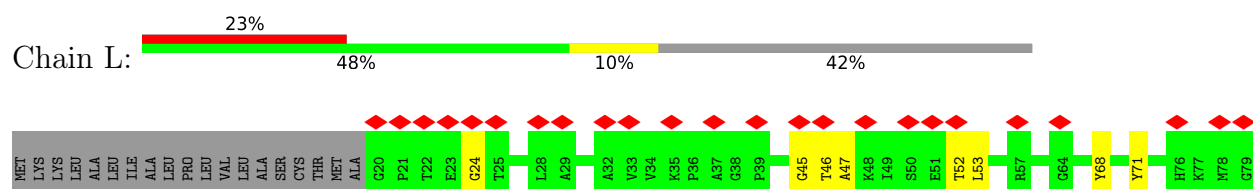
- Molecule 2: DR 0644, only-Cu Superoxide Dismutase

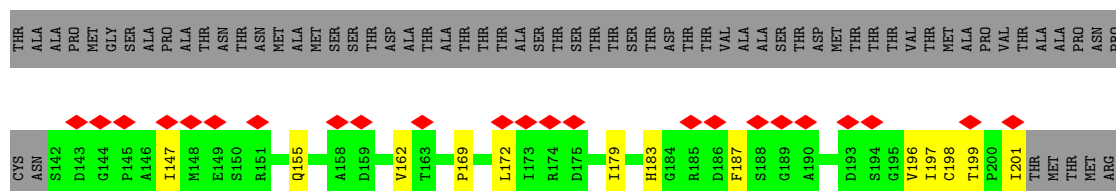


- Molecule 2: DR 0644, only-Cu Superoxide Dismutase



- Molecule 2: DR 0644, only-Cu Superoxide Dismutase





## 4 Experimental information

Property	Value	Source
EM reconstruction method	SINGLE PARTICLE	Depositor
Imposed symmetry	POINT, C3	Depositor
Number of particles used	252122	Depositor
Resolution determination method	FSC 0.143 CUT-OFF	Depositor
CTF correction method	PHASE FLIPPING AND AMPLITUDE CORRECTION	Depositor
Microscope	FEI TITAN KRIOS	Depositor
Voltage (kV)	300	Depositor
Electron dose ( $e^-/\text{\AA}^2$ )	1.3	Depositor
Minimum defocus (nm)	500	Depositor
Maximum defocus (nm)	1000	Depositor
Magnification	Not provided	
Image detector	GATAN K2 QUANTUM (4k x 4k)	Depositor
Maximum map value	2.993	Depositor
Minimum map value	-1.662	Depositor
Average map value	0.002	Depositor
Map value standard deviation	0.060	Depositor
Recommended contour level	0.46	Depositor
Map size (Å)	431.90402, 431.90402, 431.90402	wwPDB
Map dimensions	528, 528, 528	wwPDB
Map angles (°)	90.0, 90.0, 90.0	wwPDB
Pixel spacing (Å)	0.818, 0.818, 0.818	Depositor

## 5 Model quality [i](#)

### 5.1 Standard geometry [i](#)

Bond lengths and bond angles in the following residue types are not validated in this section: FE, JPX, JQ6, JPI, CU

The Z score for a bond length (or angle) is the number of standard deviations the observed value is removed from the expected value. A bond length (or angle) with  $|Z| > 5$  is considered an outlier worth inspection. RMSZ is the root-mean-square of all Z scores of the bond lengths (or angles).

Mol	Chain	Bond lengths		Bond angles	
		RMSZ	# Z  >5	RMSZ	# Z  >5
1	A	0.29	0/7258	0.53	0/9865
1	B	0.29	0/7258	0.53	0/9865
1	C	0.29	0/7258	0.53	0/9865
2	H	0.72	0/882	0.84	0/1205
2	I	0.73	0/882	0.80	0/1205
2	L	0.67	0/882	0.76	0/1205
All	All	0.36	0/24420	0.57	0/33210

Chiral center outliers are detected by calculating the chiral volume of a chiral center and verifying if the center is modelled as a planar moiety or with the opposite hand. A planarity outlier is detected by checking planarity of atoms in a peptide group, atoms in a mainchain group or atoms of a sidechain that are expected to be planar.

Mol	Chain	#Chirality outliers	#Planarity outliers
1	C	0	1

There are no bond length outliers.

There are no bond angle outliers.

There are no chirality outliers.

All (1) planarity outliers are listed below:

Mol	Chain	Res	Type	Group
1	C	696	TYR	Peptide

### 5.2 Too-close contacts [i](#)

In the following table, the Non-H and H(model) columns list the number of non-hydrogen atoms and hydrogen atoms in the chain respectively. The H(added) column lists the number of hydrogen atoms added and optimized by MolProbity. The Clashes column lists the number of clashes within

the asymmetric unit, whereas Symm-Clashes lists symmetry-related clashes.

Mol	Chain	Non-H	H(model)	H(added)	Clashes	Symm-Clashes
1	A	7117	0	6745	350	0
1	B	7117	0	6745	352	0
1	C	7117	0	6745	362	0
2	H	864	0	871	22	0
2	I	864	0	871	9	0
2	L	864	0	871	28	0
3	A	43	76	0	7	0
3	B	43	76	0	5	0
3	C	43	76	0	1	0
4	A	57	72	0	3	0
4	B	57	72	0	3	0
4	C	57	72	0	7	0
5	A	66	90	0	8	0
5	B	132	180	0	11	0
6	A	3	0	0	0	0
6	B	3	0	0	0	0
6	C	3	0	0	0	0
6	H	1	0	0	0	0
6	I	1	0	0	0	0
6	L	1	0	0	0	0
7	A	1	0	0	0	0
7	B	1	0	0	0	0
7	C	1	0	0	0	0
All	All	24456	714	22848	1046	0

The all-atom clashscore is defined as the number of clashes found per 1000 atoms (including hydrogen atoms). The all-atom clashscore for this structure is 22.

All (1046) close contacts within the same asymmetric unit are listed below, sorted by their clash magnitude.

Atom-1	Atom-2	Interatomic distance (Å)	Clash overlap (Å)
5:B:1301:JPX:C30	5:B:1301:JPX:O15	1.82	1.28
4:A:1202:JQ6:C20	5:A:1203:JPX:C50	2.23	1.15
1:B:247:ALA:HB1	2:L:187:PHE:CE2	1.88	1.08
5:A:1203:JPX:O15	5:A:1203:JPX:C31	2.00	1.08
4:A:1202:JQ6:C21	5:A:1203:JPX:C16	2.33	1.05
1:A:540:PRO:HB2	3:A:1201:JPI:C37	1.87	1.04
1:B:631:PRO:HD2	1:B:636:ALA:HB1	1.38	1.02
5:A:1203:JPX:O15	5:A:1203:JPX:C30	2.07	1.01
5:B:1303:JPX:C50	4:C:1202:JQ6:O15	2.10	0.99

*Continued on next page...*

*Continued from previous page...*

Atom-1	Atom-2	Interatomic distance (Å)	Clash overlap (Å)
1:C:605:THR:OG1	4:C:1202:JQ6:O10	1.81	0.96
1:B:549:ARG:HB2	1:B:562:VAL:HG23	1.47	0.96
1:A:609:ALA:HB1	3:A:1201:JPI:C40	1.97	0.95
1:B:546:TYR:CD1	5:B:1301:JPX:O14	2.20	0.94
5:A:1203:JPX:C19	5:A:1203:JPX:C12	2.46	0.93
1:B:819:ILE:HG12	1:B:829:ILE:HG12	1.51	0.92
1:C:549:ARG:HB2	1:C:562:VAL:HG13	1.49	0.92
1:A:549:ARG:HB2	1:A:562:VAL:HG13	1.50	0.92
2:H:21:PRO:HD2	2:L:52:THR:HA	1.53	0.91
1:A:819:ILE:HG12	1:A:829:ILE:HG12	1.53	0.90
1:B:882:GLU:HG3	1:B:883:PRO:HD2	1.53	0.90
1:A:333:SER:O	1:A:374:ASN:ND2	2.04	0.89
1:A:647:ARG:HG3	1:A:679:ASN:HB3	1.52	0.89
1:B:247:ALA:CB	2:L:187:PHE:CE2	2.55	0.89
4:A:1202:JQ6:C21	5:A:1203:JPX:C50	0.89	0.89
1:C:882:GLU:HG3	1:C:883:PRO:HD2	1.54	0.87
1:A:882:GLU:HG3	1:A:883:PRO:HD2	1.56	0.86
1:C:577:LEU:HG	1:C:615:ALA:HB2	1.56	0.86
2:H:51:GLU:HG2	2:H:56:THR:OG1	1.76	0.85
5:B:1301:JPX:O15	5:B:1301:JPX:C13	2.24	0.84
1:A:791:GLU:OE1	1:A:875:GLY:HA3	1.79	0.83
1:A:336:VAL:HG12	1:A:371:PHE:HD1	1.44	0.83
1:C:965:THR:HG23	1:C:966:ALA:H	1.42	0.82
1:A:915:LEU:HD11	1:A:1038:GLN:HG2	1.61	0.82
1:C:336:VAL:HG12	1:C:371:PHE:HD1	1.43	0.82
1:C:333:SER:O	1:C:374:ASN:ND2	2.13	0.81
1:A:777:THR:HG22	1:A:790:THR:HG23	1.61	0.81
1:C:791:GLU:OE1	1:C:875:GLY:HA3	1.80	0.81
1:C:681:ARG:HH21	1:C:778:SER:HB3	1.45	0.80
1:A:630:ARG:HH11	1:A:638:VAL:HG23	1.45	0.80
1:C:819:ILE:HG12	1:C:829:ILE:HG12	1.63	0.80
1:B:791:GLU:OE1	1:B:875:GLY:HA3	1.80	0.80
1:B:622:SER:OG	3:B:1302:JPI:C34	2.30	0.79
1:C:666:PHE:HB2	1:C:673:VAL:HG13	1.65	0.78
1:C:1045:ASP:OD1	1:C:1054:ASN:ND2	2.17	0.78
1:B:857:ASP:OD2	1:B:864:ARG:NH1	2.16	0.78
1:C:991:ALA:HB2	1:C:1023:THR:HG22	1.65	0.78
1:B:333:SER:O	1:B:374:ASN:ND2	2.17	0.77
1:B:247:ALA:C	2:L:187:PHE:HE2	1.88	0.77
1:A:1115:GLY:HA3	1:A:1132:TYR:CD2	2.20	0.77
1:A:583:TYR:OH	1:A:585:GLN:OE1	2.03	0.77

*Continued on next page...*



*Continued from previous page...*

Atom-1	Atom-2	Interatomic distance (Å)	Clash overlap (Å)
1:A:787:ASN:O	1:A:816:ARG:NH1	2.18	0.76
1:B:381:GLU:HB3	1:C:552:LEU:HD23	1.67	0.76
1:C:336:VAL:HG12	1:C:371:PHE:CD1	2.21	0.76
1:C:1115:GLY:HA3	1:C:1132:TYR:CD2	2.19	0.76
1:A:294:SER:OG	1:A:309:GLY:O	2.02	0.76
1:B:493:ASN:HB3	1:B:494:PRO:HD3	1.67	0.75
1:B:336:VAL:HG12	1:B:371:PHE:CD1	2.21	0.75
1:B:595:GLN:O	1:B:595:GLN:HG2	1.87	0.75
1:B:1115:GLY:HA3	1:B:1132:TYR:CD2	2.21	0.75
1:B:991:ALA:HB2	1:B:1023:THR:HG22	1.67	0.75
1:C:765:ASN:OD1	1:C:888:ASN:ND2	2.19	0.75
1:A:542:ILE:HD11	3:A:1201:JPI:C18	2.17	0.74
1:B:779:THR:HG22	1:B:780:GLY:H	1.51	0.74
1:C:493:ASN:HB3	1:C:494:PRO:HD3	1.67	0.74
1:B:294:SER:OG	1:B:309:GLY:O	2.02	0.74
1:B:336:VAL:HG12	1:B:371:PHE:HD1	1.49	0.74
1:C:226:GLY:O	1:C:230:THR:HG23	1.87	0.74
1:A:493:ASN:HB3	1:A:494:PRO:HD3	1.70	0.74
1:A:651:ARG:HD3	1:A:655:LEU:HA	1.69	0.74
1:A:669:ASP:O	1:A:765:ASN:ND2	2.20	0.74
1:B:226:GLY:O	1:B:230:THR:HG23	1.87	0.74
1:B:574:VAL:CG2	1:B:577:LEU:HB2	2.18	0.74
1:B:579:ALA:HB1	3:B:1302:JPI:C27	2.18	0.74
1:A:268:ARG:NH1	1:A:1157:GLN:OE1	2.22	0.73
1:A:336:VAL:HG12	1:A:371:PHE:CD1	2.22	0.73
1:B:725:ASP:HB3	1:B:752:LYS:HD3	1.69	0.73
1:C:647:ARG:HG3	1:C:679:ASN:HB3	1.70	0.73
1:A:725:ASP:HB3	1:A:752:LYS:HD3	1.70	0.73
1:B:821:ARG:O	1:B:869:ARG:HG2	1.88	0.72
1:A:226:GLY:O	1:A:230:THR:HG23	1.89	0.72
1:C:268:ARG:NH1	1:C:1157:GLN:OE1	2.22	0.72
1:A:479:PHE:CD2	1:C:429:THR:HG21	2.24	0.72
1:A:574:VAL:CG2	1:A:577:LEU:HB2	2.18	0.72
1:C:262:ILE:HD13	1:C:386:ILE:HG13	1.72	0.72
1:B:666:PHE:HB2	1:B:673:VAL:HG13	1.71	0.72
1:B:630:ARG:HH11	1:B:638:VAL:HG23	1.55	0.72
1:A:262:ILE:CD1	1:A:386:ILE:HG13	2.20	0.72
1:B:879:SER:HA	1:B:891:ARG:O	1.90	0.72
1:C:878:ALA:HB1	1:C:894:LEU:HG	1.72	0.72
2:H:21:PRO:CD	2:L:52:THR:HA	2.18	0.71
1:A:540:PRO:HA	1:A:571:ILE:HG22	1.72	0.71

*Continued on next page...*

*Continued from previous page...*

Atom-1	Atom-2	Interatomic distance (Å)	Clash overlap (Å)
1:A:878:ALA:HB3	1:A:893:GLY:H	1.53	0.71
1:B:896:CYS:SG	1:B:929:CYS:HB3	2.30	0.71
1:C:879:SER:HA	1:C:891:ARG:O	1.90	0.71
1:A:666:PHE:HB2	1:A:673:VAL:HG13	1.72	0.71
1:C:492:ASN:ND2	2:H:55:VAL:HG21	2.05	0.71
1:C:1087:ASN:ND2	1:C:1107:ASN:O	2.22	0.71
1:C:492:ASN:ND2	2:H:55:VAL:HG11	2.06	0.70
2:L:52:THR:HG23	2:L:53:LEU:H	1.54	0.70
1:B:262:ILE:CD1	1:B:386:ILE:HG13	2.21	0.70
1:C:530:SER:HB2	1:C:539:LYS:NZ	2.06	0.70
1:A:779:THR:HG22	1:A:780:GLY:H	1.56	0.69
1:A:896:CYS:SG	1:A:929:CYS:HB3	2.32	0.69
1:C:779:THR:OG1	1:C:784:ASP:O	2.11	0.69
1:B:901:PHE:CE1	1:B:1006:LEU:HD13	2.27	0.69
1:B:1122:TYR:HE2	1:C:491:GLY:HA3	1.57	0.69
1:B:313:ASN:OD1	1:B:380:LYS:HG2	1.93	0.69
1:B:232:GLU:OE2	1:C:231:VAL:HB	1.93	0.69
1:C:821:ARG:O	1:C:869:ARG:HG2	1.92	0.69
2:H:28:LEU:HD23	2:L:45:GLY:C	2.12	0.69
1:C:988:VAL:HG23	1:C:989:GLY:H	1.57	0.68
1:B:437:VAL:HB	1:B:450:ALA:HB2	1.75	0.68
1:B:535:ILE:HG23	1:B:535:ILE:O	1.94	0.68
1:B:777:THR:HG22	1:B:790:THR:HG23	1.76	0.68
1:A:910:GLY:O	1:A:1088:ARG:NH1	2.27	0.68
1:B:540:PRO:HA	1:B:571:ILE:HG22	1.76	0.68
1:C:512:PHE:CZ	1:C:584:ALA:HB1	2.29	0.68
1:A:868:ASP:HB3	1:A:929:CYS:SG	2.33	0.68
1:A:823:ALA:HB3	1:A:967:THR:HG22	1.76	0.68
1:B:241:SER:HA	2:L:68:TYR:O	1.94	0.68
1:C:669:ASP:O	1:C:765:ASN:ND2	2.26	0.68
1:B:512:PHE:CZ	1:B:584:ALA:HB1	2.28	0.68
2:L:169:PRO:HD2	2:L:172:LEU:HD22	1.74	0.68
1:B:878:ALA:HB3	1:B:893:GLY:H	1.58	0.67
1:B:787:ASN:O	1:B:816:ARG:NH1	2.27	0.67
2:I:181:VAL:HB	2:I:197:ILE:HG22	1.76	0.67
1:C:574:VAL:HG21	1:C:577:LEU:HD12	1.76	0.67
1:C:583:TYR:OH	1:C:585:GLN:OE1	2.11	0.67
1:B:268:ARG:NH1	1:B:1157:GLN:OE1	2.27	0.67
1:C:392:PHE:HB2	1:C:427:LEU:HB2	1.75	0.67
1:C:437:VAL:HB	1:C:450:ALA:HB2	1.75	0.67
1:C:577:LEU:CG	1:C:615:ALA:HB2	2.25	0.67

*Continued on next page...*

*Continued from previous page...*

Atom-1	Atom-2	Interatomic distance (Å)	Clash overlap (Å)
1:A:535:ILE:O	1:A:535:ILE:HG23	1.95	0.67
1:B:583:TYR:OH	1:B:585:GLN:OE1	2.11	0.67
1:C:1056:ASN:OD1	1:C:1086:GLN:HB2	1.96	0.66
1:A:232:GLU:OE2	1:B:231:VAL:HB	1.95	0.66
1:C:468:ASP:OD1	1:C:469:PRO:HD2	1.95	0.66
1:A:1056:ASN:OD1	1:A:1086:GLN:HB2	1.95	0.66
1:B:864:ARG:HD2	1:B:961:TYR:CE2	2.30	0.66
1:A:512:PHE:CZ	1:A:584:ALA:HB1	2.31	0.66
4:B:1304:JQ6:C28	4:B:1304:JQ6:O2	2.44	0.66
1:A:546:TYR:CD1	5:A:1203:JPX:O14	2.49	0.66
1:C:965:THR:HG23	1:C:966:ALA:N	2.10	0.66
1:A:542:ILE:CD1	3:A:1201:JPI:C18	2.74	0.65
1:B:910:GLY:O	1:B:1088:ARG:NH1	2.29	0.65
5:B:1301:JPX:O15	5:B:1301:JPX:C29	2.45	0.65
1:B:1066:LEU:HB2	1:B:1076:ILE:HG22	1.76	0.65
1:B:1086:GLN:O	1:B:1088:ARG:N	2.30	0.65
1:C:766:LEU:HB2	1:C:769:VAL:HG13	1.78	0.65
2:I:49:ILE:HG22	2:L:24:GLY:O	1.97	0.65
1:A:821:ARG:O	1:A:869:ARG:HG2	1.97	0.65
1:A:838:ALA:CB	1:A:856:ARG:HG2	2.27	0.65
1:A:609:ALA:CB	3:A:1201:JPI:C40	2.73	0.65
1:C:442:ASN:HD22	1:C:444:LYS:HZ3	1.45	0.65
1:C:896:CYS:SG	1:C:929:CYS:HB3	2.37	0.65
1:A:540:PRO:CB	3:A:1201:JPI:C37	2.72	0.64
1:B:869:ARG:N	1:B:869:ARG:HD2	2.13	0.64
1:B:546:TYR:CG	5:B:1301:JPX:O14	2.50	0.64
1:C:451:THR:O	1:C:454:GLY:N	2.24	0.64
1:C:868:ASP:HB3	1:C:929:CYS:SG	2.38	0.64
2:H:28:LEU:HD23	2:L:46:THR:N	2.13	0.64
2:I:45:GLY:HA3	2:I:62:LEU:HD23	1.79	0.64
1:B:779:THR:HG22	1:B:780:GLY:N	2.13	0.64
1:C:878:ALA:HB3	1:C:893:GLY:H	1.63	0.64
1:A:702:SER:O	1:A:703:ARG:HB2	1.97	0.63
2:H:77:LYS:HE3	2:H:175:ASP:HB3	1.79	0.63
1:A:844:THR:HG23	1:A:844:THR:O	1.98	0.63
1:A:244:GLY:HA3	2:I:68:TYR:O	1.98	0.63
1:A:907:ASP:OD1	1:A:1102:PHE:HB2	1.98	0.63
1:A:1086:GLN:O	1:A:1088:ARG:N	2.32	0.63
1:B:506:TYR:HA	1:B:512:PHE:O	1.99	0.63
1:A:779:THR:HG22	1:A:780:GLY:N	2.13	0.63
1:A:879:SER:HA	1:A:891:ARG:O	1.98	0.63

*Continued on next page...*

*Continued from previous page...*

Atom-1	Atom-2	Interatomic distance (Å)	Clash overlap (Å)
1:B:844:THR:HG23	1:B:844:THR:O	1.98	0.63
1:C:492:ASN:OD1	1:C:493:ASN:N	2.32	0.63
1:A:838:ALA:HB1	1:A:856:ARG:HG2	1.81	0.62
1:B:878:ALA:HB1	1:B:894:LEU:HG	1.80	0.62
1:B:510:TYR:HA	1:B:698:TYR:CZ	2.35	0.62
1:B:467:ARG:NH1	1:C:436:TYR:OH	2.32	0.62
1:B:897:ALA:O	1:B:925:ARG:HG2	1.99	0.62
1:C:559:GLY:HA2	1:C:562:VAL:HG11	1.82	0.62
1:A:559:GLY:HA2	1:A:562:VAL:HG11	1.79	0.62
1:B:907:ASP:OD1	1:B:1102:PHE:HB2	1.99	0.62
1:B:1029:VAL:HG13	1:B:1033:PRO:HD2	1.82	0.62
1:A:858:VAL:HG11	1:A:868:ASP:HB2	1.81	0.62
1:B:247:ALA:CB	2:L:187:PHE:HE2	2.10	0.62
1:C:577:LEU:HA	1:C:613:GLY:HA3	1.81	0.62
1:C:991:ALA:CB	1:C:1023:THR:HG22	2.29	0.62
1:B:991:ALA:CB	1:B:1023:THR:HG22	2.30	0.62
1:C:681:ARG:HD3	1:C:721:PHE:CE1	2.34	0.62
1:C:1086:GLN:O	1:C:1088:ARG:N	2.33	0.62
1:A:490:VAL:HG12	1:C:1122:TYR:CD2	2.34	0.61
1:A:490:VAL:HG12	1:C:1122:TYR:HD2	1.65	0.61
1:C:664:ALA:HB2	1:C:675:LEU:HB3	1.82	0.61
1:A:495:VAL:HG21	1:C:1071:LEU:HD11	1.81	0.61
1:A:706:ALA:HB1	1:A:876:TYR:HB3	1.82	0.61
1:B:838:ALA:CB	1:B:856:ARG:HG2	2.30	0.61
1:C:991:ALA:HA	1:C:1023:THR:HA	1.80	0.61
1:A:307:ASP:OD1	1:A:1090:TYR:OH	2.13	0.61
1:C:1029:VAL:HG13	1:C:1033:PRO:HD2	1.82	0.61
1:A:339:THR:HA	1:A:364:THR:OG1	2.01	0.61
1:C:725:ASP:OD1	1:C:752:LYS:HD2	2.01	0.61
1:A:451:THR:O	1:A:454:GLY:N	2.30	0.61
1:A:467:ARG:NH1	1:B:436:TYR:OH	2.33	0.61
1:A:468:ASP:OD1	1:A:469:PRO:HD2	2.01	0.61
1:A:1079:ARG:HG3	1:A:1079:ARG:NH1	2.14	0.61
1:A:1142:VAL:HB	1:A:1144:TYR:CE1	2.36	0.61
1:C:509:ASP:HB3	1:C:718:THR:O	2.00	0.61
1:C:565:ARG:NH2	4:C:1202:JQ6:O2	2.34	0.61
1:C:733:ASN:OD1	1:C:734:ASN:N	2.31	0.61
1:B:262:ILE:HG23	1:B:1163:TYR:HB3	1.82	0.61
1:C:1135:SER:HB2	1:C:1143:GLU:OE1	2.01	0.61
1:B:247:ALA:HB1	2:L:187:PHE:CD2	2.33	0.60
1:A:664:ALA:HB2	1:A:675:LEU:HB3	1.81	0.60

*Continued on next page...*

*Continued from previous page...*

Atom-1	Atom-2	Interatomic distance (Å)	Clash overlap (Å)
1:C:313:ASN:ND2	1:C:380:LYS:HG2	2.16	0.60
2:H:28:LEU:HD13	2:L:199:THR:HB	1.83	0.60
1:A:262:ILE:HG23	1:A:1163:TYR:HB3	1.84	0.60
1:A:1066:LEU:HB2	1:A:1076:ILE:HG22	1.83	0.60
2:H:25:THR:HA	2:L:47:ALA:O	2.00	0.60
1:A:1071:LEU:HD11	1:B:495:VAL:HG21	1.83	0.60
1:C:506:TYR:HA	1:C:512:PHE:O	2.02	0.60
1:A:221:PHE:HE2	1:C:221:PHE:HB2	1.66	0.60
1:A:1029:VAL:HG13	1:A:1033:PRO:HD2	1.83	0.60
1:C:647:ARG:HD3	1:C:649:ALA:HB3	1.84	0.60
1:C:823:ALA:HB3	1:C:967:THR:HG22	1.83	0.60
1:B:339:THR:HA	1:B:364:THR:OG1	2.02	0.60
1:C:437:VAL:HB	1:C:450:ALA:CB	2.32	0.60
1:A:262:ILE:HD12	1:A:386:ILE:HG13	1.84	0.60
1:A:681:ARG:HD3	1:A:721:PHE:CE1	2.37	0.60
1:B:897:ALA:HA	1:B:900:ASN:HD21	1.67	0.60
1:A:901:PHE:CE1	1:A:1006:LEU:HD13	2.36	0.60
1:C:256:VAL:HG13	1:C:390:LEU:HD11	1.84	0.60
1:C:603:ASP:OD1	4:C:1202:JQ6:O10	2.20	0.60
1:A:331:GLY:O	1:A:376:LEU:HD21	2.02	0.59
1:B:664:ALA:HB2	1:B:675:LEU:HB3	1.84	0.59
1:C:1087:ASN:HB3	1:C:1105:ALA:O	2.02	0.59
1:A:437:VAL:HB	1:A:450:ALA:HB2	1.84	0.59
1:C:838:ALA:CB	1:C:856:ARG:HG2	2.31	0.59
1:A:437:VAL:HB	1:A:450:ALA:CB	2.32	0.59
1:A:1079:ARG:HG3	1:A:1079:ARG:HH11	1.68	0.59
1:B:392:PHE:HB2	1:B:427:LEU:HB2	1.85	0.59
1:B:1026:LEU:O	1:B:1032:ARG:HA	2.03	0.59
1:C:706:ALA:HB1	1:C:876:TYR:HB3	1.84	0.59
1:A:509:ASP:HB3	1:A:718:THR:O	2.02	0.59
1:B:437:VAL:H	1:B:450:ALA:HB3	1.68	0.59
1:A:392:PHE:HB2	1:A:427:LEU:HB2	1.83	0.59
1:A:559:GLY:HA2	1:A:562:VAL:CG1	2.32	0.59
1:C:817:PRO:HB3	1:C:829:ILE:CG2	2.32	0.59
1:A:733:ASN:OD1	1:A:734:ASN:N	2.30	0.59
1:B:468:ASP:OD1	1:B:469:PRO:HD2	2.02	0.59
1:A:1087:ASN:ND2	1:A:1107:ASN:O	2.33	0.59
1:C:702:SER:O	1:C:703:ARG:HB2	2.02	0.59
1:A:556:ALA:HA	1:A:597:THR:OG1	2.03	0.59
1:A:515:ASN:O	1:A:516:TYR:HB3	2.03	0.58
1:A:727:GLN:HG2	1:A:750:ASN:OD1	2.03	0.58

*Continued on next page...*

*Continued from previous page...*

Atom-1	Atom-2	Interatomic distance (Å)	Clash overlap (Å)
1:B:259:SER:HB2	1:B:389:SER:OG	2.03	0.58
1:B:733:ASN:OD1	1:B:734:ASN:N	2.30	0.58
1:A:1135:SER:HB2	1:A:1143:GLU:OE1	2.03	0.58
1:C:571:ILE:CD1	1:C:573:PRO:HG3	2.34	0.58
1:B:271:ARG:HB3	1:B:1154:ALA:HB1	1.84	0.58
1:B:271:ARG:NH2	1:B:330:ASP:O	2.31	0.58
1:B:451:THR:O	1:B:454:GLY:N	2.25	0.58
1:C:515:ASN:O	1:C:516:TYR:HB3	2.03	0.58
1:C:777:THR:OG1	1:C:788:ARG:NH1	2.37	0.58
1:B:559:GLY:HA2	1:B:562:VAL:HG21	1.85	0.58
1:C:364:THR:HG22	1:C:366:LYS:HG3	1.86	0.58
1:B:515:ASN:O	1:B:516:TYR:HB3	2.04	0.58
1:B:655:LEU:CD1	1:B:718:THR:HG21	2.33	0.58
1:A:878:ALA:HB3	1:A:893:GLY:N	2.17	0.58
1:C:259:SER:HB2	1:C:389:SER:OG	2.04	0.58
1:B:606:THR:HA	1:B:626:THR:O	2.03	0.58
1:C:577:LEU:CD1	1:C:615:ALA:HB2	2.34	0.58
1:B:437:VAL:HB	1:B:450:ALA:CB	2.34	0.58
1:B:631:PRO:HD2	1:B:636:ALA:CB	2.24	0.58
1:C:838:ALA:HB1	1:C:856:ARG:HG2	1.85	0.58
1:A:271:ARG:HB3	1:A:1154:ALA:HB1	1.85	0.58
1:A:339:THR:CG2	1:A:362:ILE:HB	2.33	0.58
1:A:540:PRO:C	3:A:1201:JPI:C37	2.73	0.58
1:B:228:VAL:O	1:B:231:VAL:HG12	2.03	0.58
1:B:247:ALA:C	2:L:187:PHE:CE2	2.76	0.58
1:B:878:ALA:HB3	1:B:893:GLY:N	2.18	0.58
1:B:991:ALA:HA	1:B:1023:THR:HA	1.85	0.58
1:C:246:ILE:O	1:C:250:GLU:HG3	2.04	0.58
1:A:339:THR:HG23	1:A:362:ILE:O	2.04	0.57
1:A:440:ASN:ND2	1:A:446:ASP:OD2	2.37	0.57
1:A:1122:TYR:HE2	1:B:491:GLY:HA3	1.69	0.57
1:B:255:SER:OG	1:B:393:ASP:HB2	2.04	0.57
1:B:939:HIS:CE1	1:B:946:ALA:HB1	2.39	0.57
1:C:559:GLY:HA2	1:C:562:VAL:CG1	2.34	0.57
2:H:62:LEU:HB2	2:H:162:VAL:HG13	1.86	0.57
1:A:882:GLU:HG3	1:A:883:PRO:CD	2.32	0.57
1:B:559:GLY:HA2	1:B:562:VAL:CG2	2.34	0.57
1:B:262:ILE:HD12	1:B:386:ILE:HG13	1.85	0.57
1:B:556:ALA:HA	1:B:597:THR:OG1	2.04	0.57
1:A:259:SER:HB2	1:A:389:SER:OG	2.03	0.57
1:A:439:THR:HA	1:C:463:ALA:O	2.05	0.57

*Continued on next page...*

*Continued from previous page...*

Atom-1	Atom-2	Interatomic distance (Å)	Clash overlap (Å)
1:B:463:ALA:O	1:C:439:THR:HA	2.05	0.57
1:A:662:PRO:HB3	1:A:674:SER:HB3	1.87	0.57
1:C:234:ARG:HA	1:C:237:THR:HG22	1.85	0.57
1:C:262:ILE:CD1	1:C:386:ILE:HG13	2.35	0.57
1:A:655:LEU:CD1	1:A:718:THR:HG21	2.34	0.57
1:C:338:PHE:HB2	1:C:342:SER:O	2.05	0.57
2:I:71:TYR:HB2	2:I:162:VAL:HG21	1.87	0.57
1:A:463:ALA:O	1:B:439:THR:HA	2.04	0.57
1:A:606:THR:HA	1:A:626:THR:O	2.04	0.57
1:C:664:ALA:CB	1:C:675:LEU:HB3	2.35	0.57
1:A:506:TYR:HA	1:A:512:PHE:O	2.04	0.56
1:C:722:ALA:O	1:C:755:GLN:NE2	2.38	0.56
1:C:907:ASP:OD2	1:C:912:GLY:HA2	2.06	0.56
1:B:880:SER:OG	1:B:895:ARG:HD3	2.05	0.56
1:A:869:ARG:HD2	1:A:869:ARG:N	2.20	0.56
1:A:1026:LEU:O	1:A:1032:ARG:HA	2.04	0.56
1:A:1122:TYR:HD2	1:B:490:VAL:HG23	1.70	0.56
1:B:256:VAL:HG13	1:B:390:LEU:HD11	1.87	0.56
1:B:662:PRO:HB3	1:B:674:SER:HB3	1.87	0.56
1:C:271:ARG:HB3	1:C:1154:ALA:HB1	1.85	0.56
1:C:1066:LEU:HB2	1:C:1076:ILE:HG22	1.87	0.56
1:A:594:ALA:O	1:A:595:GLN:HG2	2.04	0.56
1:A:789:MET:HG3	1:A:814:SER:HB2	1.88	0.56
1:B:247:ALA:HB1	2:L:187:PHE:HE2	1.59	0.56
1:B:442:ASN:HB2	1:B:444:LYS:HZ3	1.70	0.56
1:C:331:GLY:O	1:C:376:LEU:HD21	2.05	0.56
1:A:236:GLU:OE1	1:A:236:GLU:HA	2.04	0.56
1:A:910:GLY:HA3	1:A:1083:TYR:CE1	2.41	0.56
1:B:1135:SER:HB2	1:B:1143:GLU:OE1	2.06	0.56
1:C:492:ASN:HD22	2:H:167:ILE:HD11	1.70	0.56
1:C:493:ASN:HB3	1:C:494:PRO:CD	2.34	0.56
1:A:271:ARG:NH2	1:A:330:ASP:O	2.34	0.56
1:B:221:PHE:HB2	1:C:221:PHE:HE2	1.70	0.56
1:B:509:ASP:HB3	1:B:718:THR:O	2.05	0.56
1:B:761:LYS:HZ2	1:B:892:THR:HG23	1.71	0.56
1:B:878:ALA:HB3	1:B:893:GLY:CA	2.36	0.56
1:C:339:THR:HA	1:C:364:THR:OG1	2.05	0.56
1:B:577:LEU:HG	1:B:615:ALA:HB2	1.86	0.56
1:B:838:ALA:HB1	1:B:856:ARG:HG2	1.86	0.56
1:B:511:VAL:HG21	1:B:582:HIS:HE2	1.71	0.56
1:B:1071:LEU:HD11	1:C:495:VAL:HG21	1.88	0.56

*Continued on next page...*



*Continued from previous page...*

Atom-1	Atom-2	Interatomic distance (Å)	Clash overlap (Å)
1:C:234:ARG:O	1:C:237:THR:HG22	2.05	0.56
1:C:236:GLU:OE1	1:C:236:GLU:HA	2.06	0.56
1:C:910:GLY:HA3	1:C:1083:TYR:CE1	2.41	0.56
1:A:243:THR:HG23	1:B:245:ARG:HH12	1.70	0.56
1:B:1086:GLN:HG2	1:B:1087:ASN:H	1.72	0.55
1:C:437:VAL:H	1:C:450:ALA:HB3	1.71	0.55
1:C:606:THR:HG23	1:C:626:THR:O	2.05	0.55
1:A:224:LEU:HD22	1:B:224:LEU:HD21	1.88	0.55
1:A:1087:ASN:HB3	1:A:1105:ALA:O	2.07	0.55
1:C:662:PRO:HB3	1:C:674:SER:HB3	1.88	0.55
1:B:664:ALA:CB	1:B:675:LEU:HB3	2.36	0.55
1:C:1001:THR:O	1:C:1001:THR:HG22	2.06	0.55
1:A:761:LYS:HZ2	1:A:892:THR:HG23	1.72	0.55
1:A:1138:ASP:OD1	1:A:1140:ASN:N	2.39	0.55
1:B:939:HIS:HE1	1:B:946:ALA:HB1	1.71	0.55
1:B:1142:VAL:HB	1:B:1144:TYR:CE1	2.41	0.55
2:H:26:TYR:O	2:L:47:ALA:N	2.40	0.55
1:A:922:ASP:O	1:A:954:ARG:HD3	2.07	0.55
1:B:990:VAL:CG2	1:B:1024:ASP:HB2	2.37	0.55
1:A:444:LYS:NZ	1:A:446:ASP:OD1	2.39	0.55
1:B:722:ALA:O	1:B:755:GLN:NE2	2.37	0.55
1:B:777:THR:HG22	1:B:790:THR:CG2	2.37	0.55
1:C:740:ARG:NE	1:C:746:VAL:HG12	2.22	0.55
1:C:556:ALA:HA	1:C:597:THR:OG1	2.07	0.55
1:C:655:LEU:HB3	1:C:718:THR:HG21	1.88	0.55
1:B:493:ASN:HB3	1:B:494:PRO:CD	2.36	0.55
1:C:655:LEU:CD1	1:C:718:THR:HG21	2.36	0.55
1:B:1087:ASN:ND2	1:B:1107:ASN:O	2.40	0.55
1:C:574:VAL:CG2	1:C:577:LEU:HB2	2.37	0.55
1:C:740:ARG:HD3	1:C:746:VAL:HA	1.88	0.55
1:C:1138:ASP:OD1	1:C:1140:ASN:N	2.40	0.55
1:C:910:GLY:O	1:C:1088:ARG:NH1	2.40	0.54
1:B:706:ALA:HB1	1:B:876:TYR:HB3	1.88	0.54
2:H:30:PRO:HA	2:L:197:ILE:HA	1.89	0.54
1:B:710:ALA:HB2	1:B:722:ALA:HA	1.89	0.54
1:C:228:VAL:O	1:C:231:VAL:HG12	2.06	0.54
1:C:901:PHE:CE1	1:C:1006:LEU:HD13	2.41	0.54
1:B:647:ARG:HG2	1:B:679:ASN:CB	2.37	0.54
2:L:169:PRO:HB2	2:L:172:LEU:HD13	1.89	0.54
1:B:723:ASN:OD1	1:B:754:GLY:HA2	2.08	0.54
1:C:492:ASN:HD21	2:H:55:VAL:HG11	1.70	0.54

*Continued on next page...*



*Continued from previous page...*

Atom-1	Atom-2	Interatomic distance (Å)	Clash overlap (Å)
2:L:183:HIS:CE1	2:L:196:VAL:HG11	2.43	0.54
1:A:338:PHE:HB2	1:A:342:SER:O	2.07	0.54
1:B:577:LEU:CD1	1:B:615:ALA:HB2	2.38	0.54
1:A:866:THR:OG1	1:A:961:TYR:O	2.14	0.54
1:B:823:ALA:HB3	1:B:967:THR:HG22	1.90	0.54
1:C:710:ALA:HB2	1:C:722:ALA:HB2	1.88	0.54
1:C:869:ARG:HD2	1:C:869:ARG:N	2.23	0.54
1:A:511:VAL:HG21	1:A:582:HIS:NE2	2.23	0.54
1:A:577:LEU:HA	1:A:613:GLY:HA3	1.88	0.54
1:A:664:ALA:CB	1:A:675:LEU:HB3	2.38	0.54
1:B:606:THR:HG23	1:B:626:THR:O	2.08	0.54
1:C:512:PHE:HE1	1:C:693:ILE:HB	1.73	0.54
1:C:597:THR:OG1	1:C:598:THR:N	2.41	0.54
1:A:262:ILE:HD13	1:A:386:ILE:HG13	1.90	0.54
1:B:325:LEU:HD12	1:B:1134:LEU:CD2	2.37	0.54
1:C:336:VAL:CG2	1:C:344:ALA:HB3	2.38	0.54
1:C:511:VAL:HG21	1:C:582:HIS:HE2	1.73	0.54
1:A:339:THR:HG21	1:A:362:ILE:HB	1.91	0.54
1:B:655:LEU:HD12	1:B:718:THR:HG21	1.90	0.54
1:B:910:GLY:HA3	1:B:1083:TYR:CE1	2.43	0.54
1:C:878:ALA:HB3	1:C:893:GLY:N	2.23	0.54
1:A:249:LEU:HD21	1:C:250:GLU:HG2	1.89	0.53
1:C:493:ASN:CB	1:C:494:PRO:HD3	2.38	0.53
1:B:732:ALA:N	1:B:739:ASP:OD2	2.30	0.53
1:A:221:PHE:HB2	1:B:221:PHE:HE2	1.73	0.53
1:A:795:SER:HG	1:A:881:PHE:HD2	1.55	0.53
1:B:262:ILE:HD13	1:B:386:ILE:HG13	1.91	0.53
1:C:703:ARG:NH1	1:C:725:ASP:OD2	2.41	0.53
1:A:655:LEU:HB3	1:A:718:THR:HG21	1.89	0.53
1:B:512:PHE:HE1	1:B:693:ILE:HB	1.74	0.53
1:C:467:ARG:HG2	1:C:468:ASP:H	1.72	0.53
1:A:260:LEU:HD11	1:A:386:ILE:HG23	1.90	0.53
1:A:681:ARG:O	1:A:756:MET:HA	2.09	0.53
1:B:650:THR:OG1	1:B:663:ALA:HB2	2.08	0.53
1:B:1087:ASN:HB3	1:B:1105:ALA:O	2.08	0.53
1:B:542:ILE:HG13	3:B:1302:JPI:C37	2.39	0.53
1:B:630:ARG:CZ	1:B:636:ALA:HB3	2.38	0.53
1:B:740:ARG:NE	1:B:746:VAL:HG12	2.24	0.53
1:C:240:ASN:ND2	2:H:183:HIS:CE1	2.76	0.53
1:A:325:LEU:HD12	1:A:1134:LEU:CD2	2.39	0.53
1:A:503:GLN:HE21	1:A:524:THR:HG23	1.74	0.53

*Continued on next page...*

*Continued from previous page...*

Atom-1	Atom-2	Interatomic distance (Å)	Clash overlap (Å)
1:C:681:ARG:O	1:C:756:MET:HA	2.09	0.53
1:A:346:PHE:CE2	1:A:351:PRO:HA	2.44	0.53
1:A:549:ARG:HB2	1:A:562:VAL:CG1	2.32	0.53
1:B:331:GLY:O	1:B:376:LEU:HD21	2.08	0.53
1:C:571:ILE:HG13	1:C:573:PRO:HD3	1.90	0.53
1:A:651:ARG:HD3	1:A:655:LEU:HD22	1.91	0.53
1:B:1001:THR:HG22	1:B:1001:THR:O	2.09	0.53
1:C:467:ARG:HG2	1:C:468:ASP:N	2.24	0.53
1:C:540:PRO:HA	1:C:571:ILE:HG22	1.90	0.53
1:C:571:ILE:HD12	1:C:573:PRO:HG3	1.91	0.53
1:A:512:PHE:HE1	1:A:693:ILE:HB	1.74	0.53
1:B:597:THR:OG1	1:B:598:THR:N	2.42	0.53
1:C:251:ARG:O	1:C:395:SER:OG	2.16	0.53
1:C:655:LEU:HB3	1:C:718:THR:CG2	2.39	0.53
1:A:493:ASN:CB	1:A:494:PRO:HD3	2.39	0.52
1:A:664:ALA:HB3	1:A:675:LEU:H	1.72	0.52
1:C:761:LYS:HZ2	1:C:892:THR:HG23	1.74	0.52
1:C:993:VAL:HG13	1:C:1019:LEU:HD11	1.91	0.52
2:H:28:LEU:HB3	2:L:197:ILE:HG12	1.90	0.52
1:A:740:ARG:HD3	1:A:746:VAL:HA	1.91	0.52
1:B:540:PRO:HB2	3:B:1302:JPI:C17	2.40	0.52
1:B:864:ARG:HD2	1:B:961:TYR:CD2	2.44	0.52
1:B:882:GLU:HG3	1:B:883:PRO:CD	2.34	0.52
1:A:1001:THR:O	1:A:1001:THR:HG22	2.08	0.52
1:C:244:GLY:HA3	2:H:68:TYR:O	2.09	0.52
1:C:402:THR:HB	1:C:415:ARG:HH11	1.74	0.52
1:C:535:ILE:HG23	1:C:535:ILE:O	2.09	0.52
1:A:655:LEU:HB3	1:A:718:THR:CG2	2.40	0.52
1:B:221:PHE:HB2	1:C:221:PHE:CE2	2.44	0.52
1:C:1026:LEU:O	1:C:1032:ARG:HA	2.09	0.52
1:B:740:ARG:HD3	1:B:746:VAL:HA	1.92	0.52
1:C:623:GLU:HB3	1:C:645:TYR:CE2	2.44	0.52
1:A:255:SER:OG	1:A:393:ASP:HB2	2.10	0.52
1:B:338:PHE:HB2	1:B:342:SER:O	2.09	0.52
1:C:606:THR:HA	1:C:626:THR:O	2.10	0.52
1:C:1003:ASN:C	1:C:1011:ALA:HB1	2.29	0.52
1:A:221:PHE:CE2	1:C:221:PHE:HB2	2.45	0.52
1:C:681:ARG:NH2	1:C:778:SER:HB3	2.21	0.52
1:B:243:THR:HG23	1:C:245:ARG:HH12	1.75	0.52
1:C:260:LEU:HD11	1:C:386:ILE:HG23	1.92	0.52
1:A:313:ASN:ND2	1:A:380:LYS:HG2	2.25	0.52

*Continued on next page...*

*Continued from previous page...*

Atom-1	Atom-2	Interatomic distance (Å)	Clash overlap (Å)
1:A:394:THR:HG21	1:A:425:PHE:CE2	2.45	0.52
1:A:574:VAL:HG23	1:A:577:LEU:HB2	1.92	0.52
1:B:655:LEU:HB3	1:B:718:THR:HG21	1.91	0.52
1:B:662:PRO:O	1:B:663:ALA:HB3	2.10	0.52
1:C:878:ALA:HB3	1:C:893:GLY:CA	2.40	0.52
1:C:988:VAL:HG23	1:C:989:GLY:N	2.23	0.52
1:C:1087:ASN:ND2	1:C:1108:ASN:HA	2.24	0.52
1:C:1087:ASN:HD21	1:C:1108:ASN:HA	1.74	0.52
1:C:539:LYS:N	1:C:540:PRO:HD3	2.26	0.51
1:A:907:ASP:OD2	1:A:912:GLY:HA2	2.10	0.51
1:A:939:HIS:CE1	1:A:946:ALA:HB1	2.45	0.51
1:B:843:VAL:CG1	1:B:851:VAL:HB	2.40	0.51
1:A:795:SER:HB3	1:A:808:THR:HG23	1.92	0.51
1:B:346:PHE:CE2	1:B:351:PRO:HA	2.44	0.51
1:B:511:VAL:HG21	1:B:582:HIS:NE2	2.24	0.51
1:C:256:VAL:CG1	1:C:390:LEU:HD11	2.40	0.51
1:C:813:ASP:OD1	1:C:835:ARG:NH1	2.32	0.51
1:A:251:ARG:O	1:A:395:SER:OG	2.17	0.51
1:B:655:LEU:HB3	1:B:718:THR:CG2	2.41	0.51
1:B:915:LEU:HD22	1:B:1038:GLN:HG2	1.93	0.51
1:C:939:HIS:CE1	1:C:946:ALA:HB1	2.46	0.51
1:A:491:GLY:CA	1:C:1122:TYR:HE2	2.24	0.51
1:B:260:LEU:HD11	1:B:386:ILE:HG23	1.92	0.51
1:B:402:THR:HB	1:B:415:ARG:HH11	1.75	0.51
2:H:197:ILE:HG12	2:I:28:LEU:HD12	1.91	0.51
1:A:597:THR:OG1	1:A:598:THR:N	2.43	0.51
1:B:335:THR:HG22	1:B:372:GLY:HA3	1.90	0.51
1:B:950:ASP:O	1:B:984:TYR:HD1	1.93	0.51
1:C:817:PRO:HB3	1:C:829:ILE:HG22	1.92	0.51
1:A:240:ASN:CG	2:I:183:HIS:ND1	2.64	0.51
1:A:493:ASN:HB3	1:A:494:PRO:CD	2.38	0.51
1:A:549:ARG:HD2	1:A:586:GLU:OE2	2.11	0.51
1:C:549:ARG:HB2	1:C:562:VAL:CG1	2.33	0.51
1:C:588:ARG:HD3	1:C:592:GLY:O	2.11	0.51
1:C:627:SER:OG	1:C:629:VAL:HG23	2.11	0.51
1:A:878:ALA:HB3	1:A:893:GLY:CA	2.41	0.51
1:B:507:PHE:HB2	1:B:512:PHE:HB2	1.93	0.51
1:C:574:VAL:HG22	1:C:577:LEU:HB2	1.93	0.51
1:A:816:ARG:O	1:A:818:GLN:HG2	2.11	0.51
1:B:262:ILE:CG2	1:B:1163:TYR:HB3	2.40	0.51
1:B:307:ASP:OD1	1:B:1090:TYR:OH	2.11	0.51

*Continued on next page...*

*Continued from previous page...*

Atom-1	Atom-2	Interatomic distance (Å)	Clash overlap (Å)
1:B:647:ARG:HG2	1:B:679:ASN:HB3	1.93	0.51
1:C:511:VAL:HG21	1:C:582:HIS:NE2	2.26	0.51
1:C:734:ASN:ND2	1:C:737:THR:HG23	2.26	0.51
1:B:251:ARG:O	1:B:395:SER:OG	2.22	0.50
1:A:325:LEU:HD12	1:A:1134:LEU:HD21	1.93	0.50
1:A:588:ARG:HD3	1:A:592:GLY:O	2.11	0.50
5:B:1301:JPX:C13	5:B:1301:JPX:C20	2.88	0.50
1:C:594:ALA:O	1:C:595:GLN:HG2	2.11	0.50
1:C:662:PRO:O	1:C:663:ALA:HB3	2.11	0.50
1:A:262:ILE:CG2	1:A:1163:TYR:HB3	2.42	0.50
1:B:493:ASN:CB	1:B:494:PRO:HD3	2.39	0.50
1:B:652:LYS:HE2	1:B:656:ALA:HB3	1.94	0.50
1:A:482:LYS:HG3	1:C:472:ASN:OD1	2.12	0.50
1:A:662:PRO:O	1:A:663:ALA:HB3	2.10	0.50
1:A:990:VAL:HG22	1:A:1024:ASP:HB2	1.92	0.50
1:B:727:GLN:HG2	1:B:750:ASN:OD1	2.12	0.50
1:C:509:ASP:O	1:C:510:TYR:HB2	2.12	0.50
1:A:337:TYR:HB3	1:A:366:LYS:HE2	1.92	0.50
1:A:510:TYR:HA	1:A:698:TYR:CZ	2.47	0.50
1:A:777:THR:HG22	1:A:790:THR:CG2	2.36	0.50
1:A:878:ALA:HB1	1:A:894:LEU:HG	1.92	0.50
1:B:325:LEU:HD12	1:B:1134:LEU:HD21	1.92	0.50
1:B:499:LEU:HD12	1:B:522:GLY:O	2.12	0.50
1:B:879:SER:HB3	1:B:890:TYR:CE2	2.47	0.50
1:A:655:LEU:HD12	1:A:718:THR:HG21	1.93	0.50
1:B:577:LEU:HD12	1:B:615:ALA:HB2	1.93	0.50
1:B:789:MET:HG3	1:B:814:SER:HB2	1.94	0.50
1:C:346:PHE:CE2	1:C:351:PRO:HA	2.46	0.50
1:C:1078:VAL:HG23	1:C:1118:VAL:HG22	1.93	0.50
1:A:990:VAL:CG2	1:A:1024:ASP:HB2	2.42	0.49
2:L:179:ILE:HG13	2:L:201:ILE:HG21	1.94	0.49
1:A:631:PRO:HG2	1:A:636:ALA:O	2.12	0.49
1:B:442:ASN:HD22	1:B:444:LYS:HZ1	1.59	0.49
1:B:704:THR:O	1:B:874:ARG:HD3	2.12	0.49
1:A:577:LEU:HD12	1:A:615:ALA:HB2	1.95	0.49
1:A:673:VAL:HA	1:A:764:ALA:HA	1.94	0.49
1:A:1029:VAL:HG23	1:A:1030:PRO:HD2	1.93	0.49
1:B:510:TYR:HA	1:B:698:TYR:OH	2.12	0.49
1:B:926:THR:HG23	1:B:928:THR:H	1.76	0.49
1:C:255:SER:OG	1:C:393:ASP:HB2	2.12	0.49
1:C:993:VAL:HG12	1:C:994:ARG:N	2.28	0.49

*Continued on next page...*

*Continued from previous page...*

Atom-1	Atom-2	Interatomic distance (Å)	Clash overlap (Å)
1:C:1142:VAL:HB	1:C:1144:TYR:CE1	2.47	0.49
1:A:221:PHE:HB2	1:B:221:PHE:CE2	2.46	0.49
1:C:882:GLU:HG3	1:C:883:PRO:CD	2.35	0.49
1:A:457:LEU:HD23	1:B:437:VAL:HG11	1.95	0.49
1:B:394:THR:HG21	1:B:425:PHE:CE2	2.46	0.49
1:B:1129:TYR:HE1	1:B:1157:GLN:HE21	1.60	0.49
1:A:509:ASP:O	1:A:510:TYR:HB2	2.12	0.49
1:A:993:VAL:HG12	1:A:994:ARG:N	2.27	0.49
1:B:922:ASP:O	1:B:954:ARG:HD3	2.12	0.49
1:C:339:THR:HG23	1:C:362:ILE:O	2.12	0.49
1:A:402:THR:HB	1:A:415:ARG:HH11	1.77	0.49
1:B:511:VAL:HG21	1:B:582:HIS:CD2	2.48	0.49
1:C:858:VAL:HG11	1:C:868:ASP:HB2	1.94	0.49
1:C:1011:ALA:O	1:C:1047:ARG:HG2	2.13	0.49
1:A:512:PHE:CE1	1:A:584:ALA:HB1	2.48	0.49
1:B:1029:VAL:HG23	1:B:1030:PRO:HD2	1.95	0.49
1:C:394:THR:HG21	1:C:425:PHE:CE1	2.48	0.49
1:A:710:ALA:HB2	1:A:722:ALA:HB2	1.94	0.49
1:B:777:THR:HG22	1:B:790:THR:OG1	2.13	0.49
2:L:71:TYR:CD2	2:L:162:VAL:HG21	2.47	0.49
1:A:681:ARG:HH21	1:A:778:SER:HB3	1.78	0.49
1:A:722:ALA:O	1:A:755:GLN:NE2	2.45	0.49
1:A:991:ALA:HA	1:A:1023:THR:HA	1.93	0.49
1:B:512:PHE:CE1	1:B:584:ALA:HB1	2.48	0.49
1:B:915:LEU:HD21	1:B:1039:VAL:O	2.13	0.49
1:C:337:TYR:HD1	1:C:343:THR:HG22	1.78	0.49
1:A:356:VAL:N	1:A:357:PRO:HD3	2.28	0.48
1:C:262:ILE:HD13	1:C:386:ILE:CG1	2.40	0.48
1:A:843:VAL:CG1	1:A:851:VAL:HB	2.43	0.48
1:B:1157:GLN:NE2	5:B:1303:JPX:O3	2.37	0.48
1:C:337:TYR:HB3	1:C:366:LYS:HD3	1.95	0.48
1:C:732:ALA:N	1:C:739:ASP:OD2	2.32	0.48
1:C:743:ASP:OD1	1:C:745:THR:HG23	2.13	0.48
1:A:555:THR:HG22	1:A:556:ALA:N	2.28	0.48
1:B:795:SER:HB3	1:B:808:THR:HG23	1.94	0.48
1:A:224:LEU:CD2	1:B:224:LEU:HD21	2.43	0.48
1:A:499:LEU:HD12	1:A:522:GLY:O	2.13	0.48
1:A:650:THR:OG1	1:A:663:ALA:HB2	2.12	0.48
1:B:577:LEU:CG	1:B:615:ALA:HB2	2.43	0.48
1:B:588:ARG:HD3	1:B:592:GLY:O	2.14	0.48
1:C:907:ASP:OD1	1:C:1102:PHE:HB2	2.14	0.48

*Continued on next page...*

*Continued from previous page...*

Atom-1	Atom-2	Interatomic distance (Å)	Clash overlap (Å)
1:A:704:THR:O	1:A:874:ARG:HD3	2.13	0.48
1:A:710:ALA:HB2	1:A:722:ALA:HA	1.95	0.48
1:A:879:SER:HB3	1:A:890:TYR:CE2	2.48	0.48
1:B:256:VAL:CG1	1:B:390:LEU:HD11	2.43	0.48
1:C:922:ASP:O	1:C:954:ARG:HD3	2.13	0.48
1:A:647:ARG:HG3	1:A:679:ASN:CB	2.34	0.48
1:B:816:ARG:HG3	1:B:817:PRO:HD2	1.95	0.48
1:B:1029:VAL:HG13	1:B:1033:PRO:CD	2.43	0.48
1:C:1029:VAL:CG2	1:C:1030:PRO:HD2	2.43	0.48
1:B:594:ALA:O	1:B:595:GLN:HB3	2.14	0.48
1:B:1031:PHE:HD1	1:B:1068:ASP:O	1.96	0.48
1:C:866:THR:OG1	1:C:961:TYR:O	2.09	0.48
1:A:488:PHE:HZ	1:C:260:LEU:HD21	1.78	0.48
1:A:850:PHE:CZ	1:A:938:GLY:HA3	2.49	0.48
1:A:1029:VAL:CG2	1:A:1030:PRO:HD2	2.44	0.48
1:B:336:VAL:CG2	1:B:344:ALA:HB3	2.43	0.48
1:B:552:LEU:HD12	1:B:552:LEU:O	2.13	0.48
1:C:510:TYR:HA	1:C:698:TYR:CZ	2.48	0.48
1:C:604:VAL:HG13	1:C:629:VAL:HG22	1.95	0.48
1:B:1029:VAL:CG2	1:B:1030:PRO:HD2	2.43	0.48
1:C:356:VAL:N	1:C:357:PRO:HD3	2.29	0.48
1:C:623:GLU:HB3	1:C:645:TYR:CD2	2.49	0.48
1:C:673:VAL:HA	1:C:764:ALA:HA	1.96	0.48
1:C:727:GLN:HG2	1:C:750:ASN:OD1	2.14	0.48
1:C:795:SER:HB3	1:C:808:THR:HG23	1.95	0.48
1:A:335:THR:CG2	1:A:372:GLY:HA3	2.43	0.48
1:B:339:THR:CG2	1:B:362:ILE:HB	2.43	0.48
1:B:509:ASP:O	1:B:510:TYR:HB2	2.14	0.48
1:C:271:ARG:NH2	1:C:330:ASP:O	2.39	0.48
1:C:325:LEU:HD12	1:C:1134:LEU:CD2	2.44	0.48
1:C:620:LEU:HD13	1:C:648:VAL:HG22	1.95	0.48
1:A:939:HIS:HE1	1:A:946:ALA:HB1	1.79	0.47
1:A:964:THR:HB	1:A:968:ALA:HB3	1.96	0.47
1:A:1129:TYR:HE1	1:A:1157:GLN:HE21	1.62	0.47
1:B:339:THR:HG23	1:B:362:ILE:O	2.14	0.47
1:B:1122:TYR:HD2	1:C:490:VAL:HG23	1.78	0.47
1:C:595:GLN:O	1:C:595:GLN:HG3	2.14	0.47
1:C:553:ASP:O	1:C:560:TYR:HD1	1.97	0.47
1:C:588:ARG:NH1	1:C:596:ASN:HB3	2.28	0.47
1:C:953:PHE:HA	1:C:981:ASP:O	2.14	0.47
1:C:787:ASN:O	1:C:816:ARG:HG3	2.14	0.47

*Continued on next page...*

*Continued from previous page...*

Atom-1	Atom-2	Interatomic distance (Å)	Clash overlap (Å)
1:A:280:PRO:HG3	1:A:1079:ARG:NH2	2.29	0.47
1:B:1138:ASP:OD1	1:B:1140:ASN:N	2.47	0.47
1:C:511:VAL:HG21	1:C:582:HIS:CD2	2.49	0.47
2:I:150:SER:HA	2:I:168:VAL:HG21	1.96	0.47
1:A:280:PRO:HG3	1:A:1079:ARG:HH21	1.79	0.47
1:B:356:VAL:N	1:B:357:PRO:HD3	2.29	0.47
1:B:795:SER:HG	1:B:881:PHE:HD2	1.61	0.47
1:B:924:SER:O	1:B:954:ARG:NH1	2.37	0.47
2:L:147:ILE:HD13	2:L:172:LEU:O	2.14	0.47
1:A:866:THR:HG23	1:A:867:THR:N	2.30	0.47
1:B:664:ALA:HB3	1:B:675:LEU:H	1.80	0.47
1:C:710:ALA:HB2	1:C:722:ALA:CB	2.45	0.47
1:A:548:SER:HB2	1:A:563:TYR:CE2	2.49	0.47
1:A:1023:THR:HG22	1:A:1024:ASP:O	2.14	0.47
1:B:571:ILE:CD1	1:B:573:PRO:HG3	2.44	0.47
1:B:761:LYS:NZ	1:B:892:THR:HG23	2.29	0.47
1:B:855:TYR:HD1	1:B:933:TYR:HB3	1.78	0.47
1:C:655:LEU:HD12	1:C:718:THR:HG21	1.96	0.47
1:C:710:ALA:HB2	1:C:722:ALA:CA	2.44	0.47
1:C:965:THR:CG2	1:C:966:ALA:H	2.19	0.47
1:B:383:SER:HB3	1:C:552:LEU:HG	1.96	0.47
1:B:402:THR:HG22	1:B:415:ARG:HA	1.97	0.47
1:B:1146:SER:HB3	1:B:1152:GLN:O	2.15	0.47
1:C:611:LEU:HG	1:C:611:LEU:O	2.14	0.47
1:C:850:PHE:CZ	1:C:938:GLY:HA3	2.50	0.47
1:C:879:SER:H	1:C:893:GLY:H	1.62	0.47
1:A:429:THR:HG22	1:A:477:VAL:HG22	1.97	0.47
1:B:623:GLU:HB3	1:B:645:TYR:CE2	2.50	0.47
1:B:775:TYR:CD1	1:B:792:ALA:HB2	2.50	0.47
1:C:335:THR:CG2	1:C:372:GLY:HA3	2.45	0.47
1:C:442:ASN:HB2	1:C:444:LYS:HZ2	1.80	0.47
1:C:512:PHE:CE1	1:C:584:ALA:HB1	2.50	0.47
1:A:703:ARG:HH12	1:A:750:ASN:ND2	2.13	0.46
1:B:635:ASN:O	1:B:637:ALA:N	2.46	0.46
1:B:816:ARG:O	1:B:818:GLN:HG2	2.15	0.46
1:B:838:ALA:HB2	1:B:856:ARG:HG2	1.96	0.46
1:C:401:VAL:HG23	1:C:419:ASN:HB2	1.96	0.46
1:B:817:PRO:HB3	1:B:829:ILE:HG22	1.97	0.46
1:C:497:VAL:HG13	1:C:525:VAL:HG22	1.96	0.46
1:C:576:THR:O	1:C:576:THR:HG22	2.15	0.46
1:C:681:ARG:HD3	1:C:721:PHE:CD1	2.50	0.46

*Continued on next page...*



*Continued from previous page...*

Atom-1	Atom-2	Interatomic distance (Å)	Clash overlap (Å)
1:A:1164:LYS:O	1:B:403:SER:HA	2.14	0.46
1:B:681:ARG:HG2	1:B:757:GLY:O	2.15	0.46
1:B:683:ILE:HD12	1:B:683:ILE:H	1.80	0.46
1:C:879:SER:HB3	1:C:890:TYR:CE2	2.50	0.46
1:A:571:ILE:HG13	1:A:573:PRO:HD3	1.97	0.46
1:A:857:ASP:OD2	1:A:864:ARG:NH1	2.49	0.46
1:B:335:THR:CG2	1:B:372:GLY:HA3	2.45	0.46
1:C:510:TYR:O	1:C:687:TYR:OH	2.24	0.46
1:C:512:PHE:CE1	1:C:693:ILE:HB	2.51	0.46
1:C:1029:VAL:HG23	1:C:1030:PRO:HD2	1.98	0.46
1:A:256:VAL:CG1	1:A:390:LEU:HD11	2.46	0.46
1:A:495:VAL:CG2	1:C:1071:LEU:HD11	2.44	0.46
1:A:552:LEU:HD12	1:A:552:LEU:O	2.16	0.46
1:C:364:THR:O	1:C:370:GLY:HA2	2.15	0.46
1:C:1122:TYR:O	1:C:1123:GLN:C	2.53	0.46
2:I:76:HIS:NE2	2:I:182:HIS:NE2	2.63	0.46
1:A:511:VAL:HG21	1:A:582:HIS:CD2	2.50	0.46
1:C:911:VAL:CG2	1:C:914:VAL:HG12	2.45	0.46
1:C:1060:TYR:HE1	1:C:1080:TYR:CE2	2.34	0.46
1:A:333:SER:HA	1:A:346:PHE:O	2.16	0.46
1:A:390:LEU:HD22	1:B:479:PHE:CE1	2.50	0.46
1:A:839:VAL:HG23	1:A:839:VAL:O	2.16	0.46
1:B:381:GLU:HB3	1:C:552:LEU:CD2	2.42	0.46
1:C:297:ILE:HD11	1:C:305:ARG:HD3	1.98	0.46
1:C:534:VAL:HG23	1:C:535:ILE:HG22	1.98	0.46
1:C:712:ASN:HB3	1:C:717:VAL:HB	1.97	0.46
2:H:31:GLN:HG2	2:L:198:CYS:SG	2.56	0.46
1:A:540:PRO:CA	1:A:571:ILE:HG22	2.45	0.46
1:A:864:ARG:HB3	1:A:961:TYR:CE1	2.51	0.46
1:B:555:THR:HG22	1:B:556:ALA:H	1.81	0.46
1:B:775:TYR:HD1	1:B:792:ALA:HB2	1.80	0.46
1:C:655:LEU:CB	1:C:718:THR:HG21	2.45	0.46
1:B:654:ASN:O	1:B:655:LEU:HB2	2.16	0.46
1:C:710:ALA:HB2	1:C:722:ALA:HA	1.97	0.46
1:C:766:LEU:HB2	1:C:769:VAL:O	2.16	0.46
1:A:403:SER:HA	1:C:1164:LYS:O	2.15	0.46
1:A:1113:LEU:HD13	1:A:1134:LEU:HB2	1.98	0.46
5:B:1301:JPX:O7	5:B:1301:JPX:C27	2.64	0.46
1:C:493:ASN:CB	1:C:494:PRO:CD	2.94	0.46
1:C:534:VAL:HG23	1:C:535:ILE:N	2.32	0.46
1:C:555:THR:HG23	1:C:595:GLN:O	2.16	0.46

*Continued on next page...*



*Continued from previous page...*

Atom-1	Atom-2	Interatomic distance (Å)	Clash overlap (Å)
1:B:446:ASP:HB2	1:B:449:GLU:OE2	2.16	0.45
1:B:535:ILE:O	1:B:535:ILE:CG2	2.63	0.45
1:B:568:ARG:NH1	1:B:610:ASP:OD2	2.48	0.45
1:B:571:ILE:HG13	1:B:573:PRO:HD3	1.97	0.45
1:C:530:SER:HB2	1:C:539:LYS:HZ3	1.80	0.45
1:C:548:SER:HB2	1:C:563:TYR:CE2	2.51	0.45
1:C:587:GLY:HA3	4:C:1202:JQ6:C13	2.45	0.45
1:C:766:LEU:HD12	1:C:769:VAL:HG13	1.96	0.45
1:C:1029:VAL:HG13	1:C:1033:PRO:CD	2.45	0.45
1:A:606:THR:HG23	1:A:626:THR:O	2.15	0.45
1:A:631:PRO:HD2	1:A:636:ALA:HB1	1.97	0.45
1:A:710:ALA:HB2	1:A:722:ALA:CA	2.46	0.45
1:A:838:ALA:HB2	1:A:856:ARG:HG2	1.98	0.45
1:B:223:ALA:O	1:B:227:ARG:HG3	2.17	0.45
1:B:631:PRO:O	1:B:633:THR:HG23	2.16	0.45
1:B:993:VAL:HG12	1:B:994:ARG:N	2.31	0.45
1:C:262:ILE:HG23	1:C:1163:TYR:HB3	1.98	0.45
1:C:776:ASP:HB3	1:C:791:GLU:HG2	1.99	0.45
1:A:571:ILE:CD1	1:A:573:PRO:HG3	2.47	0.45
1:A:576:THR:HG22	1:A:576:THR:O	2.16	0.45
1:A:1029:VAL:HG13	1:A:1033:PRO:CD	2.46	0.45
1:B:271:ARG:CD	1:B:376:LEU:HD13	2.47	0.45
1:C:271:ARG:CD	1:C:376:LEU:HD13	2.46	0.45
1:C:333:SER:HA	1:C:346:PHE:O	2.16	0.45
1:C:335:THR:HG22	1:C:372:GLY:HA3	1.99	0.45
1:C:761:LYS:NZ	1:C:892:THR:HG23	2.31	0.45
1:B:565:ARG:NH1	4:B:1304:JQ6:C32	2.80	0.45
1:B:574:VAL:HG23	1:B:577:LEU:HB2	1.94	0.45
1:B:623:GLU:HB3	1:B:645:TYR:CD2	2.51	0.45
1:B:630:ARG:CD	1:B:638:VAL:HG22	2.46	0.45
1:B:932:SER:HB2	1:B:959:ARG:O	2.17	0.45
1:C:631:PRO:O	1:C:633:THR:HG23	2.16	0.45
1:B:297:ILE:HD11	1:B:305:ARG:HD3	1.99	0.45
1:B:953:PHE:HA	1:B:981:ASP:O	2.16	0.45
1:C:402:THR:HG22	1:C:415:ARG:HA	1.98	0.45
1:A:588:ARG:NH1	1:A:596:ASN:HB3	2.32	0.45
1:A:1026:LEU:HB3	1:A:1029:VAL:HG12	1.99	0.45
1:A:1094:ASP:OD1	1:A:1098:THR:HB	2.16	0.45
1:B:280:PRO:HG3	1:B:1079:ARG:NH2	2.31	0.45
1:B:681:ARG:O	1:B:756:MET:HA	2.15	0.45
1:B:710:ALA:HB2	1:B:722:ALA:CA	2.46	0.45

*Continued on next page...*

*Continued from previous page...*

Atom-1	Atom-2	Interatomic distance (Å)	Clash overlap (Å)
1:C:499:LEU:HD12	1:C:522:GLY:O	2.16	0.45
1:C:559:GLY:C	1:C:562:VAL:HG12	2.37	0.45
1:A:287:VAL:HG13	1:A:305:ARG:CZ	2.46	0.45
1:A:761:LYS:NZ	1:A:892:THR:HG23	2.31	0.45
1:A:889:ALA:HB3	1:A:891:ARG:CZ	2.47	0.45
1:B:260:LEU:HD21	1:C:488:PHE:CZ	2.52	0.45
1:B:964:THR:HB	1:B:968:ALA:HB3	1.98	0.45
1:A:271:ARG:CD	1:A:376:LEU:HD13	2.46	0.45
1:A:491:GLY:HA3	1:C:1122:TYR:HE2	1.81	0.45
1:A:553:ASP:O	1:A:560:TYR:HD1	2.00	0.45
1:A:932:SER:HB2	1:A:959:ARG:O	2.16	0.45
1:A:1071:LEU:HD11	1:B:495:VAL:CG2	2.46	0.45
1:B:776:ASP:HB3	1:B:791:GLU:HG2	1.98	0.45
1:B:1079:ARG:NH1	1:B:1079:ARG:HG3	2.31	0.45
1:C:504:LYS:HG2	1:C:515:ASN:HA	1.99	0.45
1:C:555:THR:HG22	1:C:556:ALA:N	2.32	0.45
1:C:555:THR:O	1:C:556:ALA:HB3	2.17	0.45
1:A:297:ILE:HG13	1:A:305:ARG:HG3	1.99	0.45
1:A:401:VAL:HG23	1:A:419:ASN:HB2	1.99	0.45
1:A:423:LEU:HD12	1:A:482:LYS:O	2.17	0.45
1:A:535:ILE:O	1:A:535:ILE:CG2	2.65	0.45
1:A:1031:PHE:HD1	1:A:1068:ASP:O	2.00	0.45
1:B:555:THR:HG22	1:B:556:ALA:N	2.32	0.45
1:B:647:ARG:HG2	1:B:679:ASN:HB2	1.99	0.45
1:B:655:LEU:CB	1:B:718:THR:HG21	2.47	0.45
1:B:879:SER:H	1:B:893:GLY:H	1.63	0.45
1:A:555:THR:O	1:A:556:ALA:HB3	2.17	0.45
1:A:655:LEU:CB	1:A:718:THR:HG21	2.47	0.45
1:B:510:TYR:O	1:B:687:TYR:OH	2.23	0.45
1:B:510:TYR:N	1:B:698:TYR:OH	2.48	0.45
1:B:907:ASP:OD2	1:B:912:GLY:HA2	2.17	0.45
1:B:1164:LYS:O	1:C:403:SER:HA	2.17	0.45
1:B:287:VAL:HG13	1:B:305:ARG:CZ	2.47	0.44
1:C:897:ALA:HB1	1:C:925:ARG:CB	2.47	0.44
1:B:1012:GLY:HA3	1:B:1045:ASP:O	2.16	0.44
1:C:510:TYR:HD2	1:C:623:GLU:HG2	1.82	0.44
1:C:798:VAL:O	1:C:798:VAL:HG13	2.18	0.44
1:A:623:GLU:HB3	1:A:645:TYR:CD2	2.52	0.44
1:B:555:THR:O	1:B:556:ALA:HB3	2.18	0.44
1:B:576:THR:HG22	1:B:576:THR:O	2.17	0.44
5:B:1303:JPX:C6	4:C:1202:JQ6:C13	2.95	0.44

*Continued on next page...*

*Continued from previous page...*

Atom-1	Atom-2	Interatomic distance (Å)	Clash overlap (Å)
1:A:243:THR:HG23	1:B:245:ARG:NH1	2.31	0.44
1:A:432:PRO:HG2	1:C:474:TYR:OH	2.17	0.44
1:A:555:THR:HG22	1:A:556:ALA:H	1.83	0.44
1:A:623:GLU:HB3	1:A:645:TYR:CE2	2.51	0.44
1:A:880:SER:OG	1:A:895:ARG:HD3	2.17	0.44
1:B:673:VAL:HA	1:B:764:ALA:HA	1.98	0.44
1:C:493:ASN:ND2	2:H:53:LEU:HB3	2.32	0.44
1:C:718:THR:O	1:C:718:THR:HG22	2.17	0.44
1:B:864:ARG:HD2	1:B:961:TYR:CZ	2.52	0.44
1:B:990:VAL:HG22	1:B:1024:ASP:HB2	2.00	0.44
1:C:761:LYS:HZ2	1:C:892:THR:CG2	2.30	0.44
1:A:512:PHE:CE1	1:A:693:ILE:HB	2.52	0.44
1:A:843:VAL:HG12	1:A:851:VAL:HB	2.00	0.44
1:A:1012:GLY:HA3	1:A:1045:ASP:O	2.17	0.44
1:A:1072:PRO:HD3	2:L:53:LEU:HD12	1.99	0.44
1:B:565:ARG:HH11	4:B:1304:JQ6:C32	2.30	0.44
1:B:1005:GLN:HE21	1:B:1008:SER:HA	1.83	0.44
1:C:789:MET:HG3	1:C:814:SER:HB2	2.00	0.44
1:A:292:PHE:O	1:A:310:ASP:HB3	2.18	0.44
1:A:798:VAL:O	1:A:798:VAL:HG13	2.17	0.44
1:A:834:VAL:HG21	1:A:871:LEU:HB2	1.99	0.44
1:B:726:ARG:N	1:B:751:THR:O	2.41	0.44
1:C:492:ASN:CG	2:H:55:VAL:HG21	2.38	0.44
1:A:491:GLY:HA3	1:C:1122:TYR:CE2	2.52	0.44
1:A:539:LYS:N	1:A:540:PRO:HD3	2.33	0.44
1:A:654:ASN:O	1:A:655:LEU:HB2	2.18	0.44
1:A:817:PRO:HB3	1:A:829:ILE:HG22	2.00	0.44
1:A:879:SER:H	1:A:893:GLY:H	1.65	0.44
1:A:1087:ASN:ND2	1:A:1108:ASN:HA	2.33	0.44
1:A:1122:TYR:O	1:A:1123:GLN:C	2.56	0.44
1:B:260:LEU:HD21	1:C:488:PHE:HZ	1.82	0.44
1:B:897:ALA:HB1	1:B:925:ARG:HB3	1.99	0.44
1:B:1122:TYR:HE2	1:C:491:GLY:CA	2.30	0.44
1:A:507:PHE:HB2	1:A:512:PHE:HB2	2.00	0.44
1:A:860:VAL:HB	1:A:865:SER:HB2	2.00	0.44
1:A:935:VAL:HG22	1:A:936:GLU:N	2.33	0.44
1:C:986:ARG:HG3	1:C:987:LYS:N	2.33	0.44
1:A:223:ALA:O	1:A:227:ARG:HG3	2.18	0.43
1:A:703:ARG:HD2	1:A:727:GLN:NE2	2.32	0.43
1:A:864:ARG:HB3	1:A:961:TYR:CZ	2.53	0.43
1:C:538:TRP:CE3	1:C:571:ILE:HD12	2.53	0.43

*Continued on next page...*

*Continued from previous page...*

Atom-1	Atom-2	Interatomic distance (Å)	Clash overlap (Å)
1:C:909:ASP:OD2	1:C:915:LEU:HB2	2.18	0.43
1:C:926:THR:HG23	1:C:928:THR:H	1.83	0.43
1:C:965:THR:CG2	1:C:966:ALA:N	2.80	0.43
1:A:897:ALA:HB1	1:A:925:ARG:CB	2.47	0.43
1:A:915:LEU:HD23	1:A:1059:LYS:HD2	2.00	0.43
1:B:512:PHE:CE1	1:B:693:ILE:HB	2.52	0.43
1:B:630:ARG:HD3	1:B:638:VAL:HG22	2.00	0.43
1:C:283:ALA:HA	1:C:917:PRO:HB2	2.01	0.43
1:C:287:VAL:HG13	1:C:305:ARG:CZ	2.49	0.43
1:A:402:THR:HG22	1:A:415:ARG:HA	1.99	0.43
1:A:493:ASN:CB	1:A:494:PRO:CD	2.96	0.43
1:A:761:LYS:HE3	1:A:879:SER:OG	2.17	0.43
1:A:816:ARG:HG3	1:A:817:PRO:HD2	1.99	0.43
1:B:850:PHE:CZ	1:B:938:GLY:HA3	2.54	0.43
1:B:798:VAL:O	1:B:798:VAL:HG13	2.18	0.43
1:C:446:ASP:HB2	1:C:449:GLU:OE2	2.18	0.43
1:C:514:ASN:ND2	1:C:693:ILE:O	2.52	0.43
1:C:726:ARG:HD2	1:C:787:ASN:OD1	2.19	0.43
1:A:723:ASN:OD1	1:A:754:GLY:HA2	2.18	0.43
1:A:1078:VAL:HG23	1:A:1118:VAL:HG22	2.00	0.43
1:B:333:SER:HA	1:B:346:PHE:O	2.18	0.43
1:B:553:ASP:O	1:B:560:TYR:HD1	2.01	0.43
1:C:897:ALA:HB1	1:C:925:ARG:HB3	1.99	0.43
1:B:539:LYS:N	1:B:540:PRO:HD3	2.34	0.43
1:C:682:LYS:HG3	1:C:682:LYS:O	2.19	0.43
1:A:510:TYR:HD2	1:A:623:GLU:HG2	1.83	0.43
1:A:710:ALA:HB2	1:A:722:ALA:CB	2.48	0.43
1:C:278:LEU:HD11	1:C:1113:LEU:HG	2.00	0.43
1:C:935:VAL:HG22	1:C:936:GLU:N	2.34	0.43
1:C:939:HIS:HE1	1:C:946:ALA:HB1	1.83	0.43
1:C:1036:ASN:OD1	1:C:1037:GLY:N	2.51	0.43
1:A:538:TRP:CE3	1:A:571:ILE:HD12	2.54	0.43
1:B:392:PHE:CE1	1:C:254:PHE:HZ	2.36	0.43
1:B:935:VAL:HG22	1:B:936:GLU:N	2.34	0.43
1:C:571:ILE:O	1:C:578:THR:HA	2.18	0.43
1:C:1047:ARG:HG3	1:C:1047:ARG:O	2.18	0.43
1:A:308:PHE:HA	1:A:317:PRO:HA	2.01	0.43
1:A:392:PHE:CE1	1:B:254:PHE:HZ	2.37	0.43
1:B:294:SER:OG	1:B:310:ASP:HA	2.18	0.43
1:B:761:LYS:HE3	1:B:879:SER:OG	2.18	0.43
1:C:325:LEU:HD12	1:C:1134:LEU:HD21	2.01	0.43

*Continued on next page...*

*Continued from previous page...*

Atom-1	Atom-2	Interatomic distance (Å)	Clash overlap (Å)
1:C:723:ASN:OD1	1:C:754:GLY:HA2	2.19	0.43
1:A:405:THR:OG1	1:A:412:THR:O	2.26	0.43
1:B:242:LEU:CB	1:C:242:LEU:HD13	2.49	0.43
1:C:761:LYS:HE3	1:C:879:SER:OG	2.18	0.43
1:C:987:LYS:HG3	1:C:991:ALA:O	2.19	0.43
1:A:245:ARG:HH12	1:C:243:THR:HG23	1.83	0.42
1:A:256:VAL:HG13	1:A:390:LEU:HD11	2.00	0.42
1:A:339:THR:HG23	1:A:362:ILE:HB	2.00	0.42
1:A:534:VAL:HG23	1:A:535:ILE:N	2.34	0.42
1:A:611:LEU:O	1:A:611:LEU:HG	2.19	0.42
1:B:549:ARG:HB2	1:B:562:VAL:CG2	2.34	0.42
1:B:775:TYR:CE2	1:B:777:THR:HG23	2.54	0.42
1:C:326:TYR:CE2	1:C:1109:ARG:HD2	2.54	0.42
1:C:932:SER:HB2	1:C:959:ARG:O	2.19	0.42
1:B:283:ALA:HA	1:B:917:PRO:HB2	2.01	0.42
1:B:548:SER:HB2	1:B:563:TYR:CE2	2.54	0.42
1:B:611:LEU:O	1:B:611:LEU:HG	2.19	0.42
1:B:1122:TYR:O	1:B:1123:GLN:C	2.56	0.42
1:C:271:ARG:O	1:C:271:ARG:HG3	2.19	0.42
1:C:769:VAL:HG22	1:C:770:ALA:N	2.35	0.42
1:C:895:ARG:NH2	1:C:898:ASP:OD2	2.52	0.42
1:A:242:LEU:HD13	1:C:242:LEU:CB	2.49	0.42
1:A:364:THR:HG22	1:A:366:LYS:HG3	2.01	0.42
5:A:1203:JPX:C31	5:A:1203:JPX:C20	2.89	0.42
1:B:493:ASN:CB	1:B:494:PRO:CD	2.96	0.42
1:B:595:GLN:O	1:B:595:GLN:CG	2.62	0.42
1:B:834:VAL:HG21	1:B:871:LEU:HB2	2.00	0.42
1:A:336:VAL:CG2	1:A:344:ALA:HB3	2.49	0.42
1:B:534:VAL:HG23	1:B:535:ILE:N	2.34	0.42
1:B:1094:ASP:OD1	1:B:1098:THR:HB	2.19	0.42
1:C:530:SER:HB2	1:C:539:LYS:HZ1	1.80	0.42
1:A:953:PHE:HA	1:A:981:ASP:O	2.20	0.42
1:A:993:VAL:HG13	1:A:1019:LEU:HD11	2.01	0.42
1:B:712:ASN:HB3	1:B:717:VAL:HB	2.01	0.42
1:B:761:LYS:HZ2	1:B:892:THR:CG2	2.30	0.42
1:C:549:ARG:HD2	1:C:586:GLU:OE2	2.19	0.42
1:A:268:ARG:HG2	1:A:379:TYR:HE1	1.84	0.42
1:A:724:LEU:HB2	1:A:754:GLY:O	2.20	0.42
1:A:897:ALA:HB1	1:A:925:ARG:HB3	2.01	0.42
1:B:292:PHE:O	1:B:310:ASP:HB3	2.20	0.42
1:B:549:ARG:HD2	1:B:586:GLU:OE2	2.19	0.42

*Continued on next page...*

*Continued from previous page...*

Atom-1	Atom-2	Interatomic distance (Å)	Clash overlap (Å)
1:B:577:LEU:HA	1:B:613:GLY:HA3	2.02	0.42
1:C:297:ILE:HG13	1:C:305:ARG:HG3	2.01	0.42
1:C:507:PHE:HB2	1:C:512:PHE:HB2	2.01	0.42
1:C:860:VAL:HB	1:C:865:SER:HB2	2.00	0.42
1:A:260:LEU:HD11	1:A:386:ILE:CG2	2.50	0.42
1:A:278:LEU:HD11	1:A:1113:LEU:HG	2.02	0.42
1:B:364:THR:HG21	1:B:366:LYS:NZ	2.35	0.42
1:B:436:TYR:HB3	1:B:445:LYS:HD2	2.01	0.42
1:B:574:VAL:HG22	1:B:577:LEU:HB2	1.99	0.42
1:C:223:ALA:O	1:C:227:ARG:HG3	2.19	0.42
1:C:402:THR:HB	1:C:415:ARG:NH1	2.33	0.42
1:C:664:ALA:HB3	1:C:675:LEU:H	1.84	0.42
1:A:572:THR:HG22	1:A:574:VAL:O	2.20	0.42
1:A:619:GLU:HG2	1:A:621:HIS:NE2	2.35	0.42
1:A:775:TYR:CE2	1:A:777:THR:HG23	2.54	0.42
1:B:517:ASP:HB2	1:B:695:GLU:OE1	2.20	0.42
1:B:572:THR:HG22	1:B:574:VAL:O	2.19	0.42
1:C:654:ASN:O	1:C:655:LEU:HB2	2.18	0.42
1:C:836:ARG:HG3	1:C:858:VAL:HG22	2.02	0.42
1:A:297:ILE:HD11	1:A:305:ARG:HD3	2.02	0.42
1:B:402:THR:HB	1:B:415:ARG:NH1	2.34	0.42
1:C:405:THR:OG1	1:C:412:THR:O	2.21	0.42
1:C:565:ARG:HH12	4:C:1202:JQ6:C19	2.33	0.42
1:A:254:PHE:HZ	1:C:392:PHE:CE1	2.38	0.42
1:A:776:ASP:HB3	1:A:791:GLU:HG2	2.01	0.42
1:A:1125:LEU:CD1	1:A:1163:TYR:HB2	2.50	0.42
1:B:275:VAL:HG22	1:B:310:ASP:OD2	2.19	0.42
1:B:405:THR:OG1	1:B:412:THR:O	2.25	0.42
1:B:1087:ASN:ND2	1:B:1108:ASN:HA	2.35	0.42
1:A:662:PRO:O	1:A:675:LEU:O	2.38	0.41
1:B:855:TYR:CD1	1:B:933:TYR:HB3	2.55	0.41
1:B:860:VAL:HB	1:B:865:SER:HB2	2.01	0.41
1:C:301:THR:HG22	1:C:1095:GLY:O	2.20	0.41
1:C:609:ALA:HB1	3:C:1201:JPI:C31	2.50	0.41
1:C:704:THR:O	1:C:874:ARG:HD3	2.19	0.41
1:A:402:THR:HB	1:A:415:ARG:NH1	2.35	0.41
1:A:1148:ILE:HD11	1:A:1150:ASN:ND2	2.35	0.41
1:B:269:THR:HB	1:B:311:PHE:HB3	2.02	0.41
1:B:272:ASN:ND2	1:B:316:ASP:OD2	2.47	0.41
1:B:355:LYS:HE2	1:B:355:LYS:HA	2.02	0.41
1:B:1073:GLN:OE1	1:B:1073:GLN:HA	2.19	0.41

*Continued on next page...*

*Continued from previous page...*

Atom-1	Atom-2	Interatomic distance (Å)	Clash overlap (Å)
1:A:358:THR:OG1	1:A:361:VAL:HG13	2.20	0.41
1:A:844:THR:O	1:A:844:THR:CG2	2.68	0.41
1:A:1091:THR:O	1:A:1100:GLY:HA2	2.20	0.41
1:B:698:TYR:N	1:B:698:TYR:CD1	2.86	0.41
1:B:777:THR:CG2	1:B:790:THR:HG23	2.48	0.41
1:C:823:ALA:CB	1:C:967:THR:HG22	2.50	0.41
1:C:915:LEU:HD21	1:C:1039:VAL:O	2.21	0.41
1:A:681:ARG:HD3	1:A:721:PHE:CD1	2.55	0.41
1:A:1060:TYR:HE1	1:A:1080:TYR:CE2	2.37	0.41
1:B:434:ASP:OD1	1:B:434:ASP:N	2.43	0.41
1:B:466:LEU:HD21	1:C:431:LEU:HD11	2.01	0.41
1:B:538:TRP:CE3	1:B:571:ILE:HD12	2.56	0.41
1:B:540:PRO:CB	3:B:1302:JPI:C17	2.98	0.41
1:C:866:THR:HG23	1:C:867:THR:N	2.35	0.41
1:C:1047:ARG:HA	1:C:1052:ASN:HA	2.02	0.41
1:A:269:THR:HB	1:A:311:PHE:HB3	2.01	0.41
1:A:879:SER:HB3	1:A:890:TYR:CD2	2.55	0.41
1:B:260:LEU:HD11	1:B:386:ILE:CG2	2.50	0.41
1:B:939:HIS:HB3	1:B:953:PHE:CE2	2.55	0.41
1:C:766:LEU:CD1	1:C:769:VAL:HG13	2.50	0.41
1:C:834:VAL:HG21	1:C:871:LEU:HB2	2.02	0.41
1:C:961:TYR:HA	1:C:973:PHE:HA	2.02	0.41
1:C:1085:ALA:O	1:C:1110:ARG:HA	2.21	0.41
1:A:294:SER:OG	1:A:310:ASP:HA	2.20	0.41
1:A:939:HIS:HB3	1:A:953:PHE:CE2	2.56	0.41
1:B:588:ARG:CZ	1:B:596:ASN:HD22	2.33	0.41
1:B:1005:GLN:NE2	1:B:1008:SER:HA	2.36	0.41
1:C:907:ASP:OD1	1:C:909:ASP:O	2.39	0.41
1:C:1030:PRO:O	1:C:1031:PHE:HB2	2.20	0.41
1:A:813:ASP:OD1	1:A:835:ARG:NH1	2.38	0.41
1:A:817:PRO:O	1:A:818:GLN:HB2	2.21	0.41
1:A:847:LEU:O	1:A:946:ALA:HA	2.21	0.41
1:B:297:ILE:HG13	1:B:305:ARG:HG3	2.02	0.41
1:B:339:THR:HG21	1:B:362:ILE:HB	2.02	0.41
1:B:923:GLN:HA	1:B:925:ARG:NH1	2.36	0.41
1:B:1071:LEU:HD11	1:C:495:VAL:CG2	2.50	0.41
1:A:337:TYR:HB3	1:A:366:LYS:CE	2.51	0.41
1:A:355:LYS:HE2	1:A:355:LYS:HA	2.02	0.41
1:A:559:GLY:C	1:A:562:VAL:HG12	2.41	0.41
1:A:761:LYS:HZ2	1:A:892:THR:CG2	2.32	0.41
1:A:986:ARG:HG3	1:A:987:LYS:N	2.35	0.41

*Continued on next page...*



*Continued from previous page...*

Atom-1	Atom-2	Interatomic distance (Å)	Clash overlap (Å)
1:B:623:GLU:O	1:B:644:PHE:HA	2.20	0.41
1:B:769:VAL:HG12	1:B:770:ALA:N	2.36	0.41
1:B:986:ARG:HG3	1:B:987:LYS:N	2.35	0.41
1:C:308:PHE:HA	1:C:317:PRO:HA	2.01	0.41
1:C:346:PHE:CD2	1:C:351:PRO:HA	2.56	0.41
1:C:847:LEU:O	1:C:946:ALA:HA	2.20	0.41
1:C:1146:SER:HB3	1:C:1152:GLN:O	2.20	0.41
1:A:479:PHE:CE1	1:C:390:LEU:HD22	2.56	0.41
1:A:488:PHE:CZ	1:C:260:LEU:HD21	2.55	0.41
1:A:594:ALA:O	1:A:595:GLN:CG	2.68	0.41
1:A:651:ARG:HD3	1:A:655:LEU:CA	2.46	0.41
1:A:683:ILE:HD12	1:A:683:ILE:H	1.86	0.41
1:A:855:TYR:CD2	1:A:933:TYR:HB3	2.56	0.41
1:A:961:TYR:HA	1:A:973:PHE:HA	2.03	0.41
1:A:1125:LEU:HD12	1:A:1163:TYR:HB2	2.03	0.41
1:B:338:PHE:CZ	1:B:361:VAL:HG21	2.56	0.41
1:B:529:GLY:O	1:B:540:PRO:HD2	2.21	0.41
1:C:364:THR:CG2	1:C:366:LYS:HG3	2.50	0.41
1:C:434:ASP:OD1	1:C:434:ASP:N	2.45	0.41
1:A:468:ASP:HB2	1:A:474:TYR:HE2	1.86	0.41
1:A:623:GLU:O	1:A:644:PHE:HA	2.21	0.41
1:A:834:VAL:HG11	1:A:872:LEU:HG	2.03	0.41
1:C:662:PRO:O	1:C:675:LEU:O	2.39	0.41
1:C:1091:THR:O	1:C:1100:GLY:HA2	2.21	0.41
1:B:308:PHE:HA	1:B:317:PRO:HA	2.02	0.40
1:B:474:TYR:OH	1:C:432:PRO:HG2	2.21	0.40
1:B:1045:ASP:OD1	1:B:1054:ASN:ND2	2.54	0.40
1:C:834:VAL:HG11	1:C:872:LEU:HG	2.03	0.40
1:A:228:VAL:O	1:A:232:GLU:HG2	2.21	0.40
1:A:564:TYR:HB3	1:A:586:GLU:OE1	2.21	0.40
1:A:577:LEU:HG	1:A:615:ALA:HB2	2.04	0.40
1:A:598:THR:HB	1:A:599:SER:H	1.76	0.40
1:B:271:ARG:HB3	1:B:1154:ALA:CB	2.51	0.40
1:B:682:LYS:HD3	1:B:756:MET:HG3	2.03	0.40
1:C:269:THR:HB	1:C:311:PHE:HB3	2.02	0.40
1:C:510:TYR:HA	1:C:698:TYR:CE1	2.57	0.40
1:A:242:LEU:CB	1:B:242:LEU:HD13	2.52	0.40
1:A:767:GLY:C	1:A:769:VAL:H	2.24	0.40
1:A:987:LYS:HG3	1:A:991:ALA:O	2.22	0.40
1:B:277:ARG:HE	1:B:277:ARG:HB3	1.79	0.40
1:B:589:ASP:OD1	1:B:592:GLY:N	2.54	0.40

*Continued on next page...*



Continued from previous page...

Atom-1	Atom-2	Interatomic distance (Å)	Clash overlap (Å)
5:B:1301:JPX:O15	5:B:1301:JPX:C28	2.69	0.40
1:C:555:THR:HG22	1:C:556:ALA:H	1.87	0.40
1:A:437:VAL:H	1:A:450:ALA:HB3	1.86	0.40
1:A:517:ASP:HB2	1:A:695:GLU:OE1	2.21	0.40
1:C:679:ASN:OD1	1:C:681:ARG:NH1	2.54	0.40
1:C:838:ALA:HB2	1:C:856:ARG:HG2	2.00	0.40
1:C:911:VAL:HG21	1:C:914:VAL:HG12	2.03	0.40
1:A:242:LEU:HD22	1:C:246:ILE:HD12	2.02	0.40
1:B:244:GLY:O	2:L:155:GLN:NE2	2.55	0.40
1:B:817:PRO:O	1:B:818:GLN:HB2	2.22	0.40
1:C:339:THR:CG2	1:C:362:ILE:HB	2.52	0.40
1:C:610:ASP:HB2	1:C:612:HIS:NE2	2.36	0.40

There are no symmetry-related clashes.

## 5.3 Torsion angles [i](#)

### 5.3.1 Protein backbone [i](#)

In the following table, the Percentiles column shows the percent Ramachandran outliers of the chain as a percentile score with respect to all PDB entries followed by that with respect to all EM entries.

The Analysed column shows the number of residues for which the backbone conformation was analysed, and the total number of residues.

Mol	Chain	Analysed	Favoured	Allowed	Outliers	Percentiles	
1	A	947/1167 (81%)	848 (90%)	97 (10%)	2 (0%)	47	60
1	B	947/1167 (81%)	846 (89%)	99 (10%)	2 (0%)	47	60
1	C	947/1167 (81%)	850 (90%)	95 (10%)	2 (0%)	47	60
2	H	116/206 (56%)	97 (84%)	19 (16%)	0	100	100
2	I	116/206 (56%)	89 (77%)	27 (23%)	0	100	100
2	L	116/206 (56%)	96 (83%)	20 (17%)	0	100	100
All	All	3189/4119 (77%)	2826 (89%)	357 (11%)	6 (0%)	50	60

All (6) Ramachandran outliers are listed below:

Mol	Chain	Res	Type
1	A	818	GLN

Continued on next page...

*Continued from previous page...*

Mol	Chain	Res	Type
1	B	818	GLN
1	C	818	GLN
1	B	1087	ASN
1	A	1087	ASN
1	C	1087	ASN

### 5.3.2 Protein sidechains ⓘ

In the following table, the Percentiles column shows the percent sidechain outliers of the chain as a percentile score with respect to all PDB entries followed by that with respect to all EM entries.

The Analysed column shows the number of residues for which the sidechain conformation was analysed, and the total number of residues.

Mol	Chain	Analysed	Rotameric	Outliers	Percentiles	
1	A	726/891 (82%)	724 (100%)	2 (0%)	92	96
1	B	726/891 (82%)	724 (100%)	2 (0%)	92	96
1	C	726/891 (82%)	724 (100%)	2 (0%)	92	96
2	H	89/157 (57%)	88 (99%)	1 (1%)	73	83
2	I	89/157 (57%)	88 (99%)	1 (1%)	73	83
2	L	89/157 (57%)	89 (100%)	0	100	100
All	All	2445/3144 (78%)	2437 (100%)	8 (0%)	92	96

All (8) residues with a non-rotameric sidechain are listed below:

Mol	Chain	Res	Type
1	A	360	LYS
1	A	368	ARG
1	B	360	LYS
1	B	368	ARG
1	C	360	LYS
1	C	368	ARG
2	H	52	THR
2	I	74	HIS

Sometimes sidechains can be flipped to improve hydrogen bonding and reduce clashes. All (8) such sidechains are listed below:

Mol	Chain	Res	Type
1	A	487	GLN
1	A	765	ASN
1	A	888	ASN
1	B	493	ASN
1	B	596	ASN
1	C	240	ASN
1	C	493	ASN
1	C	1054	ASN

### 5.3.3 RNA [i](#)

There are no RNA molecules in this entry.

## 5.4 Non-standard residues in protein, DNA, RNA chains [i](#)

There are no non-standard protein/DNA/RNA residues in this entry.

## 5.5 Carbohydrates [i](#)

There are no monosaccharides in this entry.

## 5.6 Ligand geometry [i](#)

Of 24 ligands modelled in this entry, 15 are monoatomic - leaving 9 for Mogul analysis.

In the following table, the Counts columns list the number of bonds (or angles) for which Mogul statistics could be retrieved, the number of bonds (or angles) that are observed in the model and the number of bonds (or angles) that are defined in the Chemical Component Dictionary. The Link column lists molecule types, if any, to which the group is linked. The Z score for a bond length (or angle) is the number of standard deviations the observed value is removed from the expected value. A bond length (or angle) with  $|Z| > 2$  is considered an outlier worth inspection. RMSZ is the root-mean-square of all Z scores of the bond lengths (or angles).

Mol	Type	Chain	Res	Link	Bond lengths			Bond angles		
					Counts	RMSZ	$\# Z  > 2$	Counts	RMSZ	$\# Z  > 2$
4	JQ6	C	1202	-	56,57,57	0.25	0	66,71,71	0.67	2 (3%)
5	JPX	B	1301	4	65,66,66	0.47	1 (1%)	75,80,80	0.76	3 (4%)
4	JQ6	B	1304	5	56,57,57	0.28	0	66,71,71	0.53	0
5	JPX	B	1303	-	65,66,66	0.37	0	75,80,80	1.27	7 (9%)
3	JPI	A	1201	-	43,43,43	2.29	3 (6%)	55,58,58	2.03	8 (14%)
3	JPI	C	1201	-	43,43,43	2.29	3 (6%)	55,58,58	2.10	8 (14%)

Mol	Type	Chain	Res	Link	Bond lengths			Bond angles		
					Counts	RMSZ	# Z  > 2	Counts	RMSZ	# Z  > 2
4	JQ6	A	1202	-	56,57,57	0.30	0	66,71,71	0.53	0
5	JPX	A	1203	-	65,66,66	0.46	1 (1%)	75,80,80	0.72	2 (2%)
3	JPI	B	1302	-	43,43,43	2.25	3 (6%)	55,58,58	2.04	8 (14%)

In the following table, the Chirals column lists the number of chiral outliers, the number of chiral centers analysed, the number of these observed in the model and the number defined in the Chemical Component Dictionary. Similar counts are reported in the Torsion and Rings columns. '-' means no outliers of that kind were identified.

Mol	Type	Chain	Res	Link	Chirals	Torsions	Rings
4	JQ6	C	1202	-	-	27/58/78/78	0/1/1/1
5	JPX	B	1301	4	-	38/69/89/89	0/1/1/1
4	JQ6	B	1304	5	-	24/58/78/78	0/1/1/1
5	JPX	B	1303	-	-	31/69/89/89	0/1/1/1
3	JPI	A	1201	-	4/4/11/11	10/37/61/61	0/1/1/1
3	JPI	C	1201	-	4/4/11/11	16/37/61/61	0/1/1/1
4	JQ6	A	1202	-	-	31/58/78/78	0/1/1/1
5	JPX	A	1203	-	-	34/69/89/89	0/1/1/1
3	JPI	B	1302	-	4/4/11/11	18/37/61/61	0/1/1/1

All (11) bond length outliers are listed below:

Mol	Chain	Res	Type	Atoms	Z	Observed(Å)	Ideal(Å)
3	C	1201	JPI	C5-C6	-11.82	1.34	1.54
3	A	1201	JPI	C5-C6	-11.70	1.34	1.54
3	B	1302	JPI	C5-C6	-11.39	1.35	1.54
3	A	1201	JPI	O1-C4	-8.79	1.24	1.43
3	B	1302	JPI	O1-C4	-8.66	1.25	1.43
3	C	1201	JPI	O1-C4	-8.62	1.25	1.43
5	A	1203	JPX	C2-C1	-2.50	1.48	1.52
5	B	1301	JPX	C2-C1	-2.49	1.48	1.52
3	C	1201	JPI	C5-C4	-2.31	1.46	1.53
3	A	1201	JPI	C5-C4	-2.25	1.46	1.53
3	B	1302	JPI	C5-C4	-2.12	1.46	1.53

All (38) bond angle outliers are listed below:

Mol	Chain	Res	Type	Atoms	Z	Observed(°)	Ideal(°)
3	A	1201	JPI	C7-C5-C6	9.28	126.14	113.04

*Continued on next page...*

*Continued from previous page...*

Mol	Chain	Res	Type	Atoms	Z	Observed(°)	Ideal(°)
3	C	1201	JPI	C7-C5-C6	9.22	126.06	113.04
3	B	1302	JPI	C7-C5-C6	8.58	125.15	113.04
5	B	1303	JPX	O6-C4-O5	-5.99	95.79	109.97
3	B	1302	JPI	O1-C4-C5	5.60	122.18	110.66
3	C	1201	JPI	O1-C4-C5	5.52	122.03	110.66
3	A	1201	JPI	O1-C4-C5	5.49	121.97	110.66
3	A	1201	JPI	C3-C4-C5	5.36	117.85	111.02
3	C	1201	JPI	C11-C10-C6	5.30	121.19	112.77
3	C	1201	JPI	C3-C4-C5	5.23	117.68	111.02
3	B	1302	JPI	C3-C4-C5	5.19	117.64	111.02
3	B	1302	JPI	C1-C6-C5	4.82	119.25	112.96
3	C	1201	JPI	C7-C5-C4	4.80	117.24	111.36
3	A	1201	JPI	C7-C5-C4	4.76	117.19	111.36
3	B	1302	JPI	C7-C5-C4	4.50	116.87	111.36
3	A	1201	JPI	C1-C6-C5	4.31	118.58	112.96
3	C	1201	JPI	O1-C4-C3	4.17	120.29	109.94
3	A	1201	JPI	O1-C4-C3	4.12	120.16	109.94
3	B	1302	JPI	O1-C4-C3	4.11	120.15	109.94
3	B	1302	JPI	C6-C5-C4	4.03	117.90	110.60
5	B	1303	JPX	P1-O1-C1	3.95	132.11	123.04
5	B	1303	JPX	O1-C1-C2	3.34	112.05	106.56
3	A	1201	JPI	C6-C5-C4	3.32	116.61	110.60
3	C	1201	JPI	C6-C5-C4	3.28	116.54	110.60
3	C	1201	JPI	C1-C6-C5	3.17	117.09	112.96
5	B	1303	JPX	O12-C25-C26	3.06	118.09	111.50
5	A	1203	JPX	O12-C25-C26	2.95	117.85	111.50
5	B	1301	JPX	C4-C8-N2	-2.90	106.00	111.00
3	B	1302	JPI	C9-C1-C6	2.59	116.79	110.92
5	B	1301	JPX	O12-C25-C26	2.51	116.91	111.50
4	C	1202	JQ6	O1-C1-C2	-2.39	102.65	106.56
5	A	1203	JPX	C4-C8-N2	-2.32	107.01	111.00
4	C	1202	JQ6	C4-C8-N2	2.28	114.92	111.00
3	A	1201	JPI	C11-C10-C6	2.21	116.27	112.77
5	B	1301	JPX	C7-C8-N2	2.13	114.65	110.62
5	B	1303	JPX	C2-O5-C4	2.12	117.88	113.74
5	B	1303	JPX	O6-C4-C8	2.07	114.62	110.58
5	B	1303	JPX	O2-P1-O1	2.07	114.95	106.78

All (12) chirality outliers are listed below:

Mol	Chain	Res	Type	Atom
3	A	1201	JPI	C2

*Continued on next page...*

*Continued from previous page...*

Mol	Chain	Res	Type	Atom
3	A	1201	JPI	C6
3	A	1201	JPI	C5
3	A	1201	JPI	C4
3	B	1302	JPI	C2
3	B	1302	JPI	C6
3	B	1302	JPI	C5
3	B	1302	JPI	C4
3	C	1201	JPI	C2
3	C	1201	JPI	C6
3	C	1201	JPI	C5
3	C	1201	JPI	C4

All (229) torsion outliers are listed below:

Mol	Chain	Res	Type	Atoms
3	B	1302	JPI	C6-C10-C11-C12
3	B	1302	JPI	C11-C10-C6-C1
3	C	1201	JPI	C11-C10-C6-C5
4	A	1202	JQ6	O1-C1-C2-O5
4	A	1202	JQ6	C2-C1-C3-O7
4	A	1202	JQ6	C16-C15-N2-C8
4	A	1202	JQ6	O11-C15-N2-C8
4	A	1202	JQ6	C1-C3-N1-C9
4	A	1202	JQ6	C1-O1-P1-O4
4	A	1202	JQ6	C17-O4-P1-O2
4	B	1304	JQ6	O1-C1-C2-O5
4	B	1304	JQ6	C16-C15-N2-C8
4	B	1304	JQ6	O11-C15-N2-C8
4	B	1304	JQ6	C26-C25-O12-C18
4	B	1304	JQ6	C1-C3-N1-C9
4	C	1202	JQ6	C2-C1-C3-N1
4	C	1202	JQ6	C2-C1-C3-O7
4	C	1202	JQ6	C16-C15-N2-C8
4	C	1202	JQ6	O11-C15-N2-C8
4	C	1202	JQ6	C26-C25-O12-C18
4	C	1202	JQ6	O14-C25-O12-C18
4	C	1202	JQ6	C1-C3-N1-C9
5	A	1203	JPX	C1-C3-N1-C9
5	A	1203	JPX	O7-C3-N1-C9
5	A	1203	JPX	C8-C4-O5-C2
5	A	1203	JPX	C4-C8-N2-C15
5	A	1203	JPX	C16-C15-N2-C8

*Continued on next page...*

*Continued from previous page...*

Mol	Chain	Res	Type	Atoms
5	A	1203	JPX	O11-C15-N2-C8
5	A	1203	JPX	C26-C25-O12-C18
5	A	1203	JPX	C17-O4-P1-O2
5	B	1301	JPX	C1-C3-N1-C9
5	B	1301	JPX	O7-C3-N1-C9
5	B	1301	JPX	C8-C4-O5-C2
5	B	1301	JPX	C4-C8-N2-C15
5	B	1301	JPX	C16-C15-N2-C8
5	B	1301	JPX	O11-C15-N2-C8
5	B	1301	JPX	C26-C25-O12-C18
5	B	1301	JPX	C17-O4-P1-O2
5	B	1303	JPX	C2-C1-O1-P1
5	B	1303	JPX	C2-C1-C3-N1
5	B	1303	JPX	C2-C1-C3-O7
5	B	1303	JPX	C8-C4-O5-C2
5	B	1303	JPX	O6-C4-O5-C2
5	B	1303	JPX	C4-C8-N2-C15
5	B	1303	JPX	C16-C15-N2-C8
5	B	1303	JPX	O11-C15-N2-C8
5	B	1303	JPX	O4-C17-C18-O12
5	B	1303	JPX	C26-C25-O12-C18
4	A	1202	JQ6	C26-C25-O12-C18
4	A	1202	JQ6	O14-C25-O12-C18
4	B	1304	JQ6	O14-C25-O12-C18
4	A	1202	JQ6	C21-C20-O13-C19
4	A	1202	JQ6	O7-C3-N1-C9
4	B	1304	JQ6	O7-C3-N1-C9
4	C	1202	JQ6	O7-C3-N1-C9
4	A	1202	JQ6	O15-C20-O13-C19
5	A	1203	JPX	O14-C25-O12-C18
5	B	1301	JPX	O14-C25-O12-C18
5	B	1303	JPX	O14-C25-O12-C18
4	B	1304	JQ6	O15-C20-O13-C19
4	C	1202	JQ6	O15-C20-O13-C19
5	A	1203	JPX	O8-C14-C5-O6
5	B	1301	JPX	O8-C14-C5-O6
5	A	1203	JPX	C21-C20-O13-C19
5	B	1301	JPX	C21-C20-O13-C19
4	B	1304	JQ6	C21-C20-O13-C19
4	C	1202	JQ6	C21-C20-O13-C19
4	C	1202	JQ6	C15-C16-C28-C29
5	B	1303	JPX	O8-C14-C5-O6

*Continued on next page...*

*Continued from previous page...*

Mol	Chain	Res	Type	Atoms
5	B	1301	JPX	O15-C20-O13-C19
5	A	1203	JPX	O8-C14-C5-C6
5	B	1301	JPX	O8-C14-C5-C6
5	B	1303	JPX	O8-C14-C5-C6
5	B	1301	JPX	C18-C17-O4-P1
5	A	1203	JPX	O15-C20-O13-C19
4	C	1202	JQ6	C11-C10-C9-N1
5	A	1203	JPX	O6-C4-O5-C2
5	B	1301	JPX	O6-C4-O5-C2
5	B	1303	JPX	C21-C20-O13-C19
5	B	1301	JPX	C11-C10-C9-N1
3	A	1201	JPI	C22-C23-C24-C25
5	B	1303	JPX	O15-C20-O13-C19
5	A	1203	JPX	C25-C26-C27-C43
3	B	1302	JPI	C16-C17-C18-C19
3	B	1302	JPI	C18-C19-C20-C21
3	A	1201	JPI	C13-C14-C15-C16
3	B	1302	JPI	C26-C27-C28-C29
5	A	1203	JPX	C18-C17-O4-P1
3	A	1201	JPI	C18-C19-C20-C21
3	C	1201	JPI	C30-C31-C32-C33
3	A	1201	JPI	C29-C30-C31-C32
3	C	1201	JPI	C21-C22-C23-C24
4	A	1202	JQ6	C17-O4-P1-O1
3	B	1302	JPI	C31-C32-C33-C34
4	B	1304	JQ6	C29-C30-C31-C32
5	A	1203	JPX	C28-C29-C30-C31
5	A	1203	JPX	C30-C31-C32-C33
3	C	1201	JPI	C13-C14-C15-C16
5	A	1203	JPX	C27-C43-C44-C48
5	B	1301	JPX	C26-C27-C43-C44
5	A	1203	JPX	C24-C38-C39-C40
5	B	1303	JPX	C21-C22-C23-C24
4	B	1304	JQ6	C33-C34-C35-C36
4	C	1202	JQ6	O8-C14-C5-O6
5	A	1203	JPX	C12-C13-C28-C29
4	B	1304	JQ6	C16-C28-C29-C30
4	B	1304	JQ6	C31-C32-C33-C34
5	B	1301	JPX	C31-C32-C33-C34
4	C	1202	JQ6	C50-C51-C52-C53
3	C	1201	JPI	C12-C13-C14-C15
4	A	1202	JQ6	C9-C10-C11-C12

*Continued on next page...*



*Continued from previous page...*

Mol	Chain	Res	Type	Atoms
5	B	1301	JPX	O12-C18-C19-O13
4	C	1202	JQ6	C28-C29-C30-C31
5	B	1301	JPX	C17-O4-P1-O1
5	B	1303	JPX	O4-C17-C18-C19
5	B	1301	JPX	C11-C12-C13-C28
5	B	1303	JPX	C28-C29-C30-C31
4	C	1202	JQ6	C34-C35-C36-C37
4	A	1202	JQ6	C15-C16-C28-C29
4	A	1202	JQ6	C17-C18-C19-O13
5	B	1301	JPX	C17-C18-C19-O13
5	B	1303	JPX	C44-C48-C49-C51
4	B	1304	JQ6	C10-C11-C12-C13
5	B	1301	JPX	C33-C34-C35-C36
4	C	1202	JQ6	C17-C18-O12-C25
4	C	1202	JQ6	C10-C11-C12-C13
5	B	1301	JPX	C38-C39-C40-C41
3	A	1201	JPI	C12-C13-C14-C15
5	B	1301	JPX	C22-C23-C24-C38
5	B	1301	JPX	C23-C24-C38-C39
4	C	1202	JQ6	C17-C18-C19-O13
5	B	1303	JPX	C17-C18-C19-O13
5	B	1303	JPX	C34-C35-C36-C37
4	B	1304	JQ6	C35-C36-C37-C50
5	B	1303	JPX	C11-C12-C13-C28
4	A	1202	JQ6	C1-O1-P1-O2
5	A	1203	JPX	C1-O1-P1-O3
3	C	1201	JPI	C17-C18-C19-C20
5	B	1303	JPX	C23-C24-C38-C39
3	B	1302	JPI	C31-C32-C33-C35
4	C	1202	JQ6	O12-C18-C19-O13
3	B	1302	JPI	C39-C25-C26-C27
3	C	1201	JPI	C10-C11-C12-C36
5	A	1203	JPX	C32-C33-C34-C35
4	B	1304	JQ6	C9-C10-C11-C12
4	A	1202	JQ6	C3-C1-C2-O5
4	B	1304	JQ6	C3-C1-C2-O5
3	A	1201	JPI	C10-C11-C12-C13
3	B	1302	JPI	C24-C25-C26-C27
3	B	1302	JPI	C28-C29-C30-C31
3	C	1201	JPI	C28-C29-C30-C31
4	B	1304	JQ6	C18-C17-O4-P1
5	B	1301	JPX	O4-C17-C18-O12

*Continued on next page...*

*Continued from previous page...*

Mol	Chain	Res	Type	Atoms
4	A	1202	JQ6	C37-C50-C51-C52
5	A	1203	JPX	C44-C48-C49-C51
4	A	1202	JQ6	O1-C1-C3-O7
5	B	1303	JPX	O1-C1-C3-O7
3	B	1302	JPI	C13-C14-C15-C16
3	B	1302	JPI	C40-C29-C30-C31
3	B	1302	JPI	C29-C30-C31-C32
5	B	1303	JPX	O1-C1-C3-N1
5	A	1203	JPX	C17-O4-P1-O1
5	B	1301	JPX	C44-C48-C49-C51
5	B	1303	JPX	C39-C40-C41-C42
3	B	1302	JPI	C31-C32-C33-O3
4	A	1202	JQ6	C17-O4-P1-O3
5	B	1301	JPX	C17-O4-P1-O3
5	B	1301	JPX	O4-C17-C18-C19
5	B	1301	JPX	C21-C22-C23-C24
4	C	1202	JQ6	C31-C32-C33-C34
3	A	1201	JPI	C27-C28-C29-C30
3	B	1302	JPI	C19-C20-C21-C22
3	C	1201	JPI	C15-C16-C17-C18
4	A	1202	JQ6	O12-C18-C19-O13
5	B	1303	JPX	O12-C18-C19-O13
3	A	1201	JPI	C10-C11-C12-C36
3	C	1201	JPI	C19-C20-C21-C38
3	C	1201	JPI	C40-C29-C30-C31
4	B	1304	JQ6	C50-C51-C52-C53
4	B	1304	JQ6	C51-C52-C53-C54
5	A	1203	JPX	C29-C30-C31-C32
4	A	1202	JQ6	C50-C51-C52-C53
5	B	1303	JPX	C30-C31-C32-C33
4	A	1202	JQ6	C30-C31-C32-C33
4	C	1202	JQ6	C17-O4-P1-O1
3	C	1201	JPI	C23-C24-C25-C26
4	C	1202	JQ6	C32-C33-C34-C35
5	B	1301	JPX	C24-C38-C39-C40
5	A	1203	JPX	C9-C10-C11-C12
3	A	1201	JPI	C20-C21-C22-C23
5	B	1303	JPX	C24-C38-C39-C40
5	A	1203	JPX	O4-C17-C18-C19
5	B	1303	JPX	C7-C8-N2-C15
5	A	1203	JPX	C1-O1-P1-O4
3	C	1201	JPI	C6-C10-C11-C12

*Continued on next page...*

*Continued from previous page...*

Mol	Chain	Res	Type	Atoms
4	A	1202	JQ6	C2-C1-O1-P1
4	A	1202	JQ6	C51-C52-C53-C54
5	B	1301	JPX	C20-C21-C22-C23
5	B	1301	JPX	C7-C8-N2-C15
3	B	1302	JPI	C19-C20-C21-C38
4	B	1304	JQ6	C37-C50-C51-C52
5	B	1301	JPX	O12-C25-C26-C27
4	A	1202	JQ6	C31-C32-C33-C34
4	B	1304	JQ6	O1-C1-C3-O7
4	C	1202	JQ6	O1-C1-C3-O7
5	B	1301	JPX	O1-C1-C3-O7
4	C	1202	JQ6	C36-C37-C50-C51
3	C	1201	JPI	C19-C20-C21-C22
3	A	1201	JPI	C27-C28-C29-C40
3	C	1201	JPI	C37-C16-C17-C18
4	A	1202	JQ6	C2-C1-C3-N1
4	A	1202	JQ6	O1-C1-C3-N1
4	B	1304	JQ6	O1-C1-C3-N1
4	C	1202	JQ6	O1-C1-C3-N1
5	A	1203	JPX	O1-C1-C3-N1
5	B	1301	JPX	O1-C1-C3-N1
4	A	1202	JQ6	C28-C29-C30-C31
4	B	1304	JQ6	C17-O4-P1-O2
4	C	1202	JQ6	C17-O4-P1-O2
5	A	1203	JPX	C17-O4-P1-O3
3	B	1302	JPI	C17-C18-C19-C20
4	A	1202	JQ6	C36-C37-C50-C51
3	C	1201	JPI	C23-C24-C25-C39
5	A	1203	JPX	C7-C8-N2-C15
5	A	1203	JPX	O12-C25-C26-C27
3	B	1302	JPI	C25-C26-C27-C28
5	A	1203	JPX	O14-C25-C26-C27
5	B	1303	JPX	O12-C25-C26-C27
5	B	1301	JPX	O14-C25-C26-C27

There are no ring outliers.

9 monomers are involved in 40 short contacts:

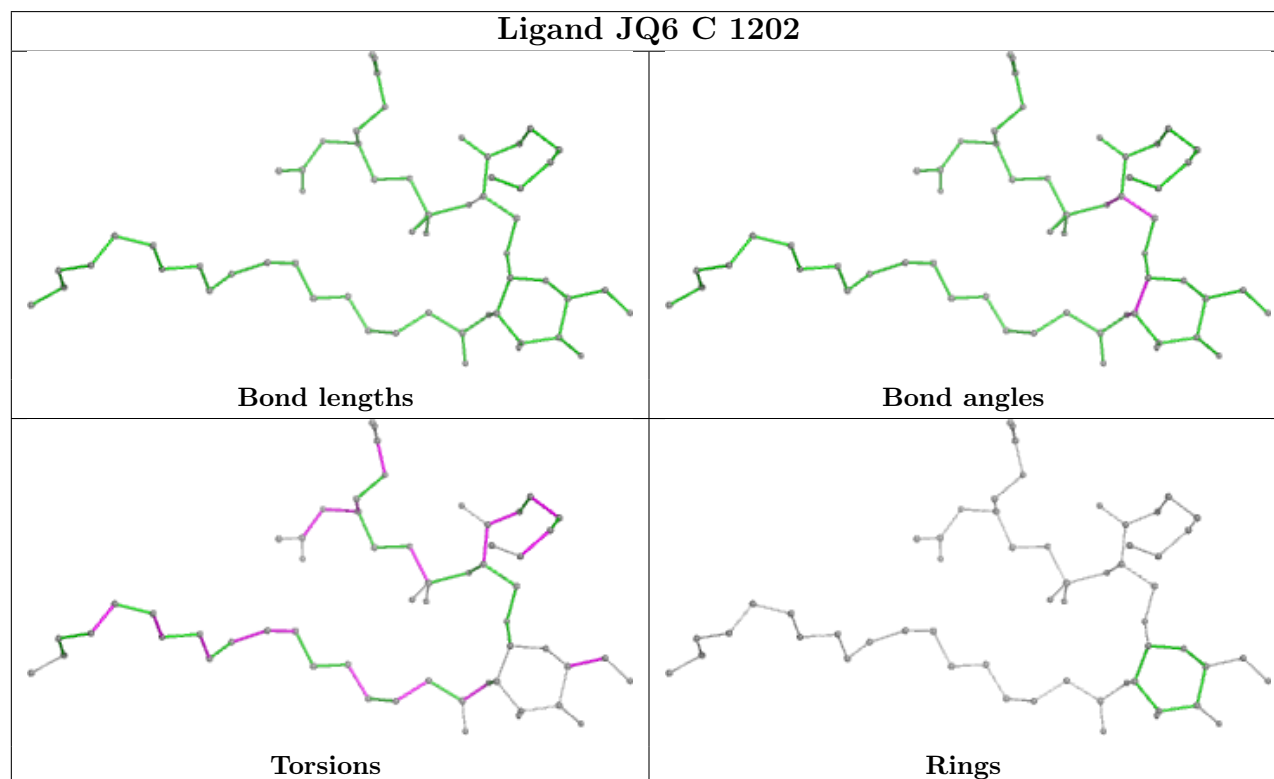
Mol	Chain	Res	Type	Clashes	Symm-Clashes
4	C	1202	JQ6	7	0
5	B	1301	JPX	8	0
4	B	1304	JQ6	3	0

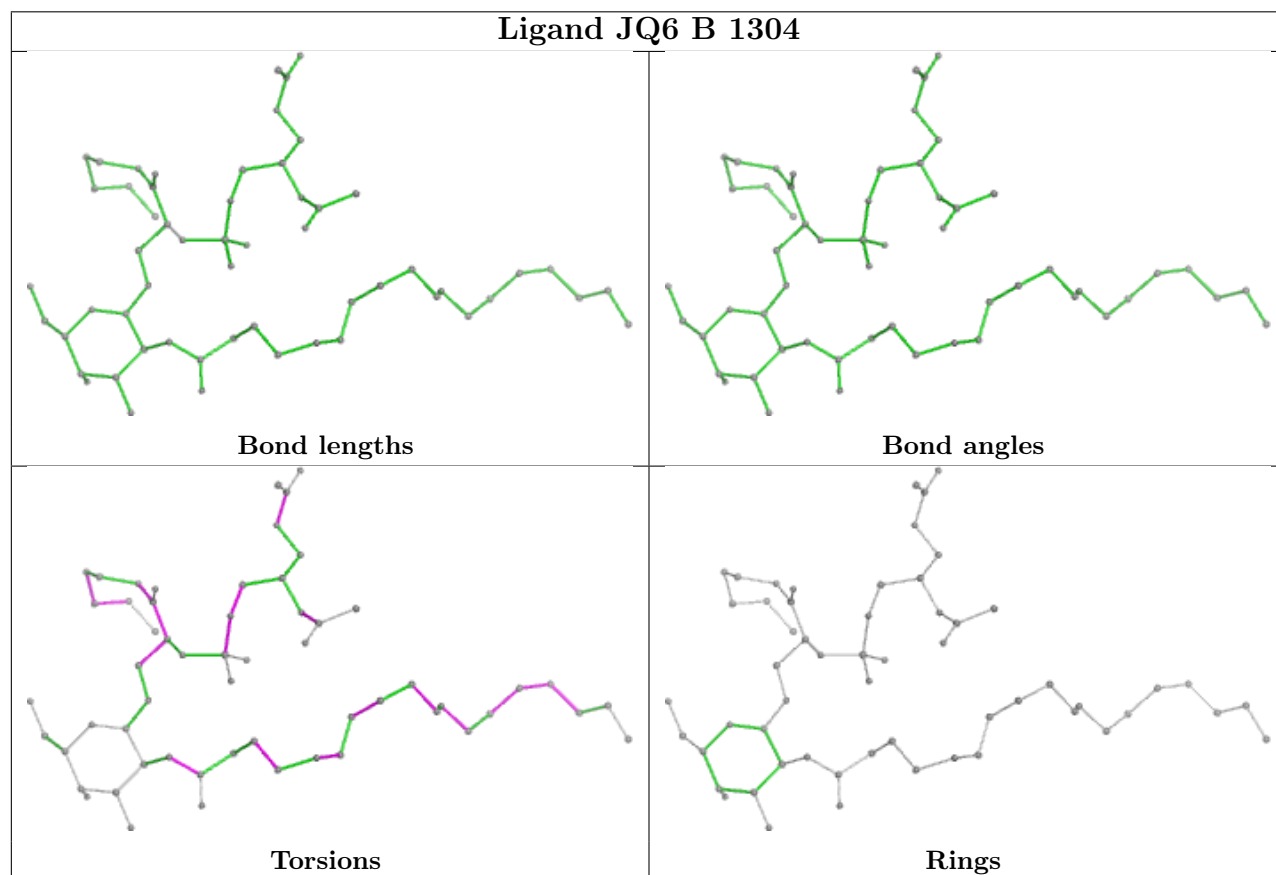
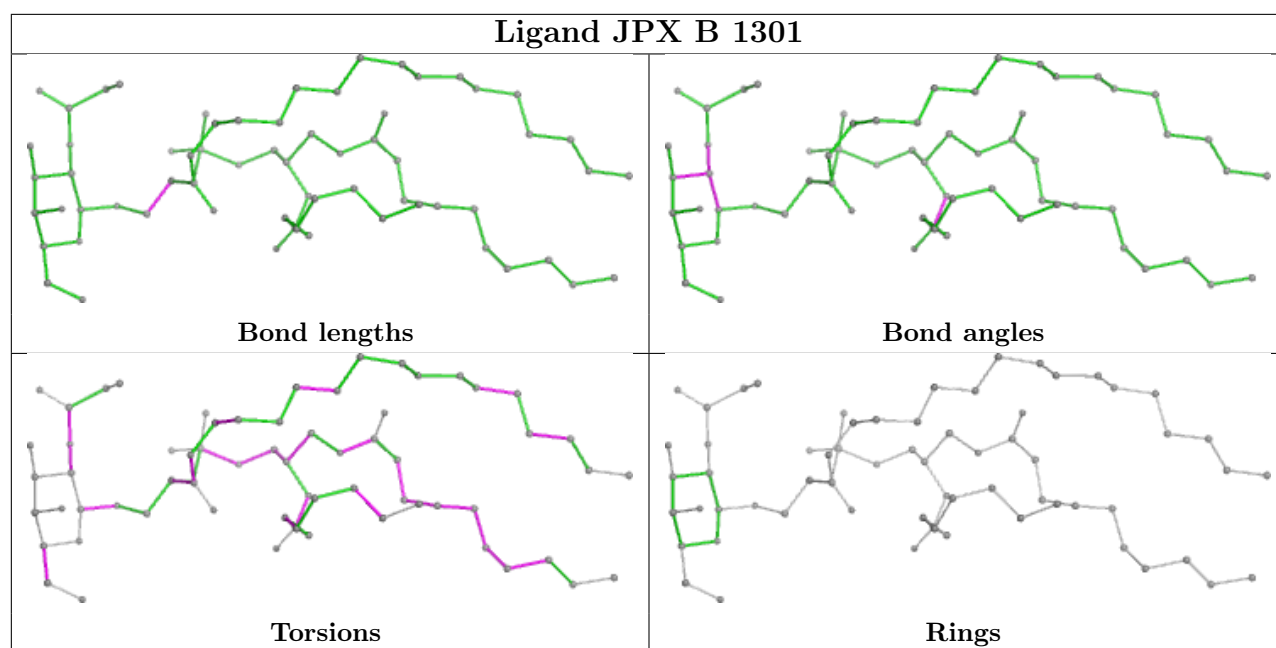
*Continued on next page...*

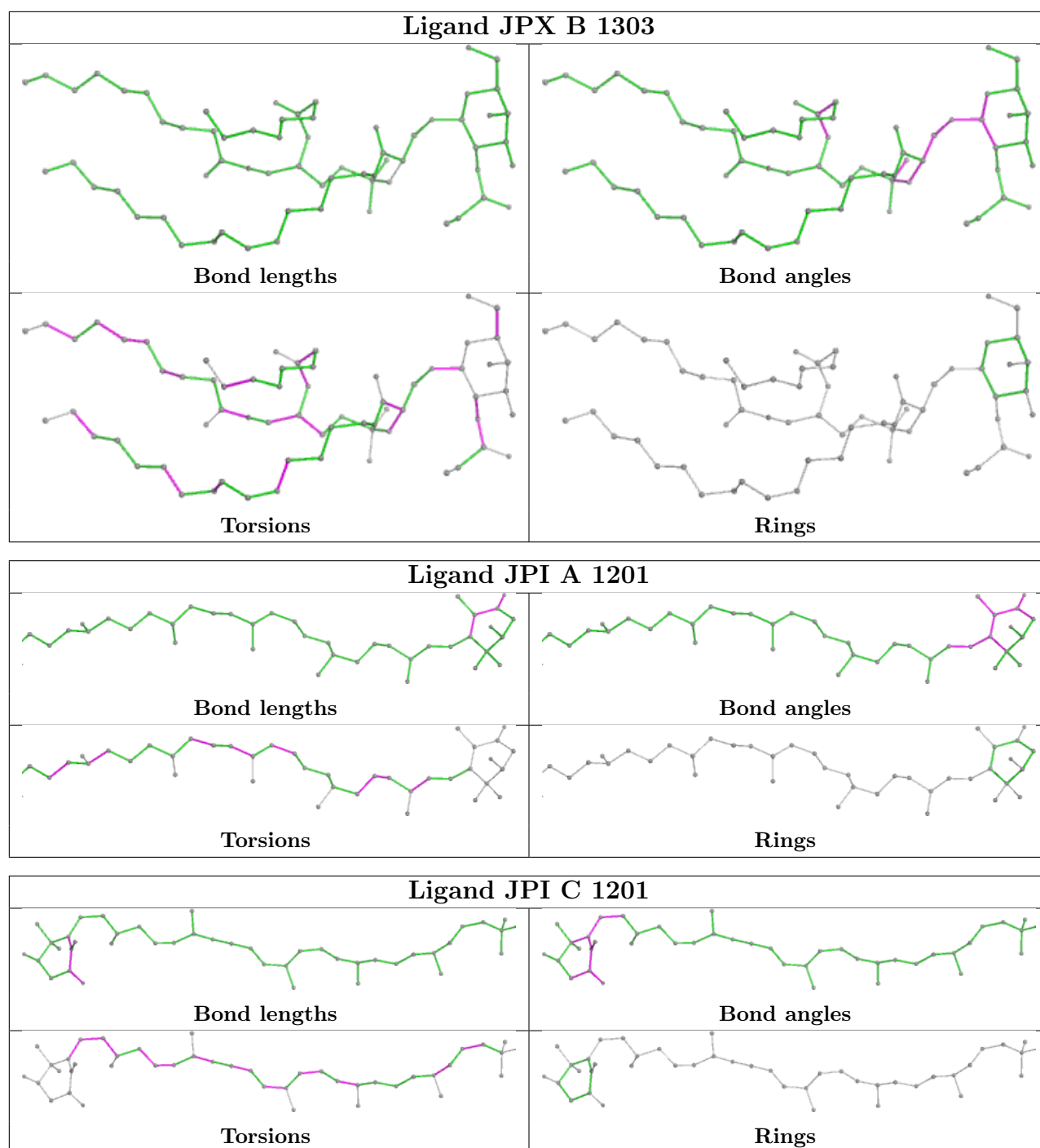
*Continued from previous page...*

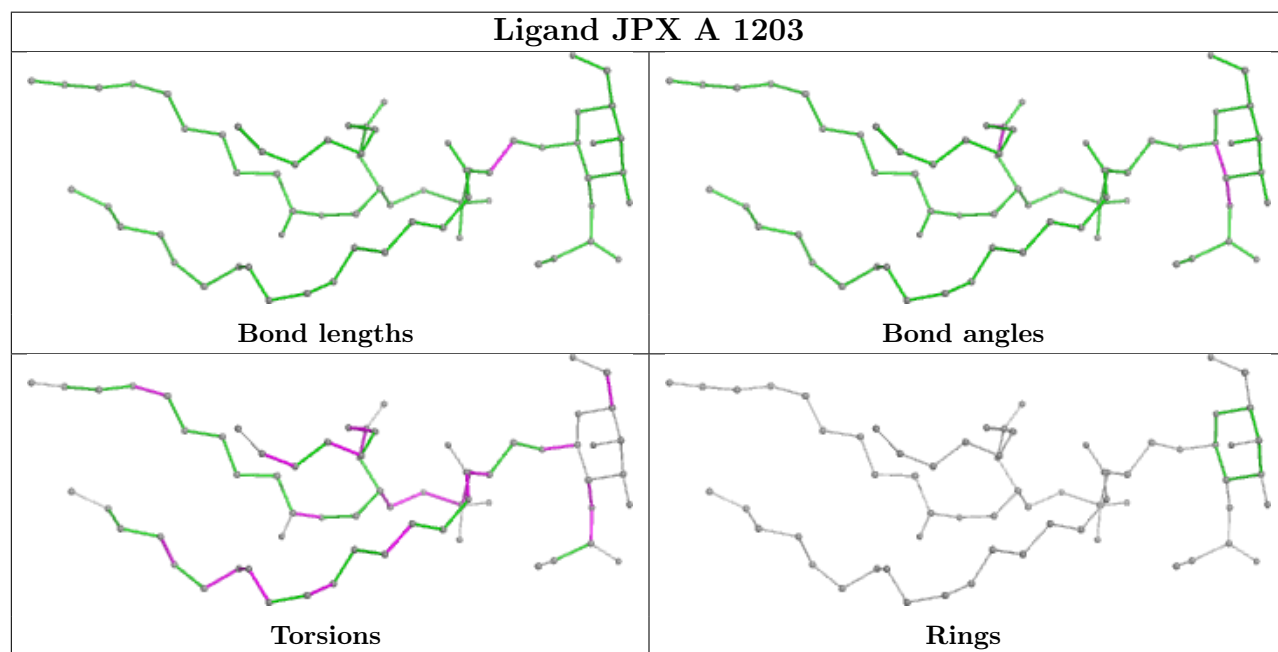
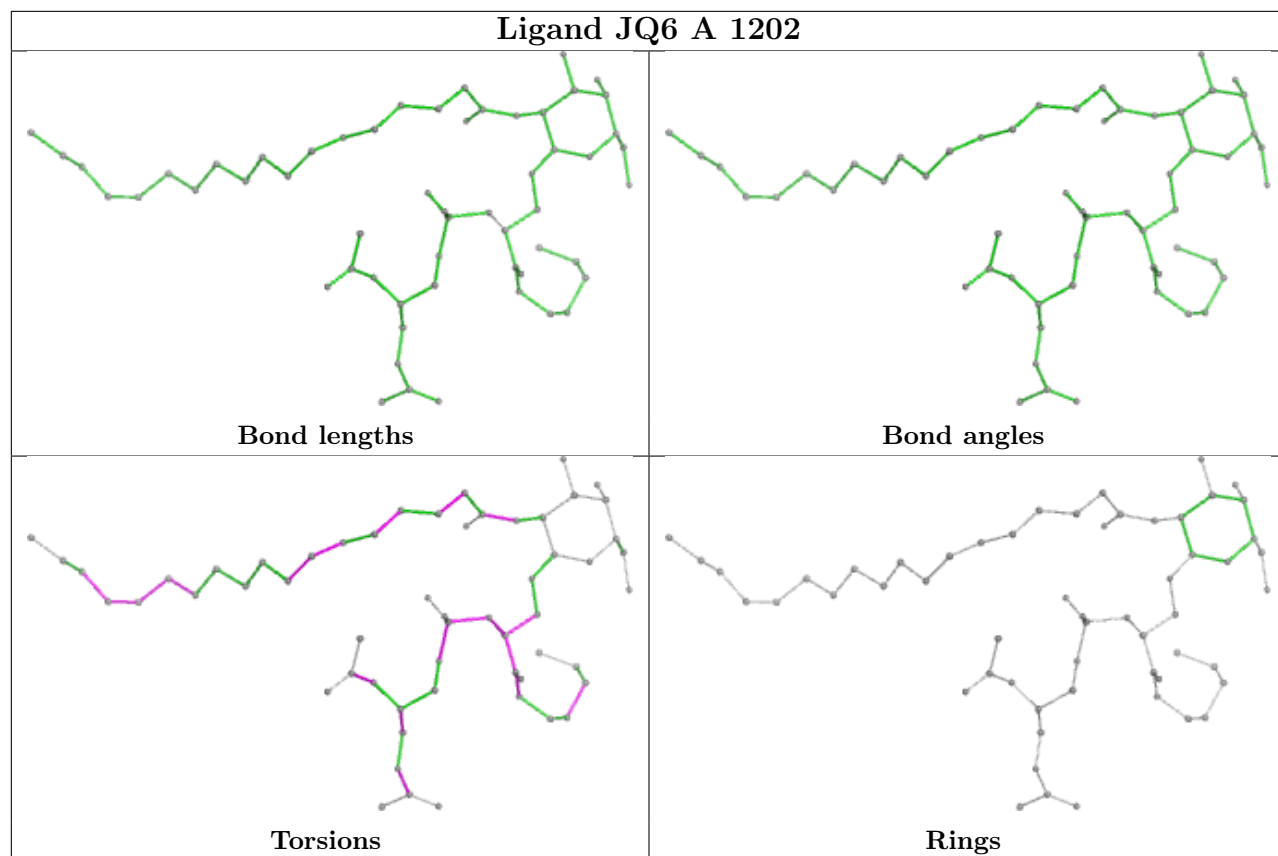
Mol	Chain	Res	Type	Clashes	Symm-Clashes
5	B	1303	JPX	3	0
3	A	1201	JPI	7	0
3	C	1201	JPI	1	0
4	A	1202	JQ6	3	0
5	A	1203	JPX	8	0
3	B	1302	JPI	5	0

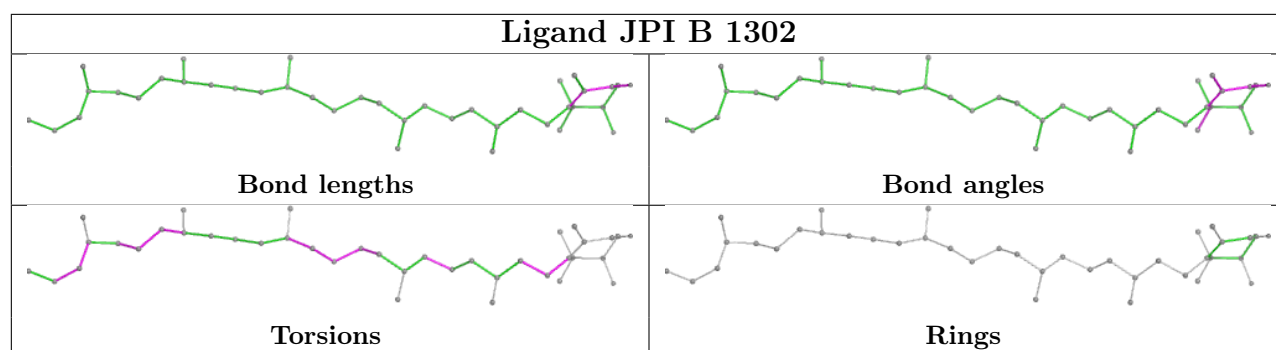
The following is a two-dimensional graphical depiction of Mogul quality analysis of bond lengths, bond angles, torsion angles, and ring geometry for all instances of the Ligand of Interest. In addition, ligands with molecular weight > 250 and outliers as shown on the validation Tables will also be included. For torsion angles, if less than 5% of the Mogul distribution of torsion angles is within 10 degrees of the torsion angle in question, then that torsion angle is considered an outlier. Any bond that is central to one or more torsion angles identified as an outlier by Mogul will be highlighted in the graph. For rings, the root-mean-square deviation (RMSD) between the ring in question and similar rings identified by Mogul is calculated over all ring torsion angles. If the average RMSD is greater than 60 degrees and the minimal RMSD between the ring in question and any Mogul-identified rings is also greater than 60 degrees, then that ring is considered an outlier. The outliers are highlighted in purple. The color gray indicates Mogul did not find sufficient equivalents in the CSD to analyse the geometry.











## 5.7 Other polymers [i](#)

There are no such residues in this entry.

## 5.8 Polymer linkage issues [i](#)

There are no chain breaks in this entry.



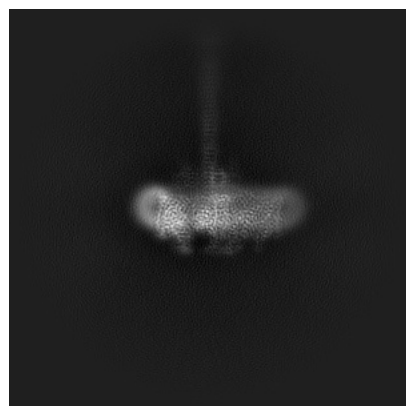
## 6 Map visualisation [i](#)

This section contains visualisations of the EMDB entry EMD-14715. These allow visual inspection of the internal detail of the map and identification of artifacts.

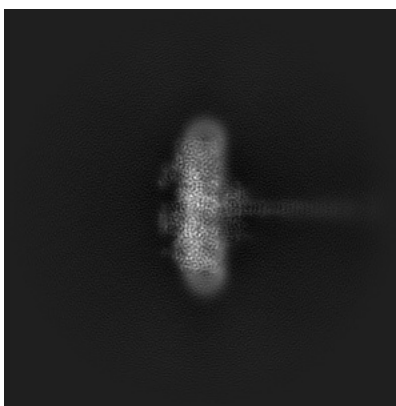
Images derived from a raw map, generated by summing the deposited half-maps, are presented below the corresponding image components of the primary map to allow further visual inspection and comparison with those of the primary map.

### 6.1 Orthogonal projections [i](#)

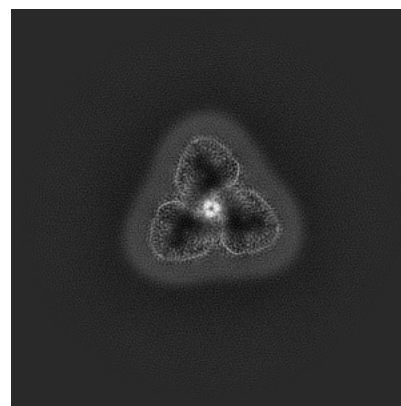
#### 6.1.1 Primary map



X

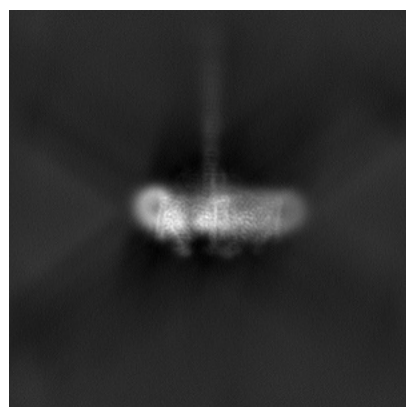


Y

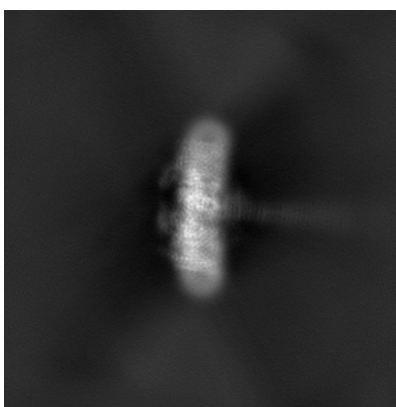


Z

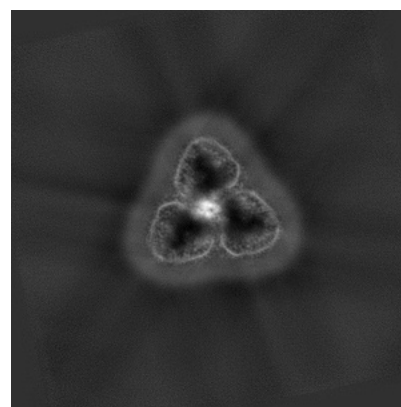
#### 6.1.2 Raw map



X



Y

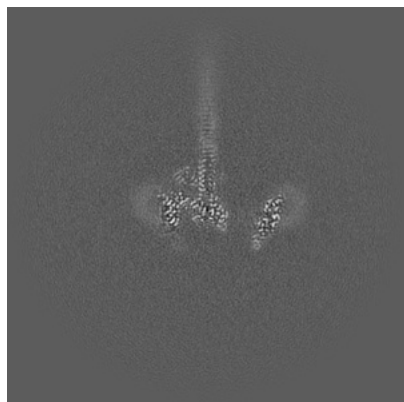


Z

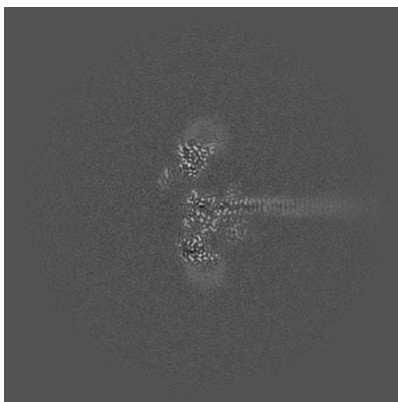
The images above show the map projected in three orthogonal directions.

## 6.2 Central slices [i](#)

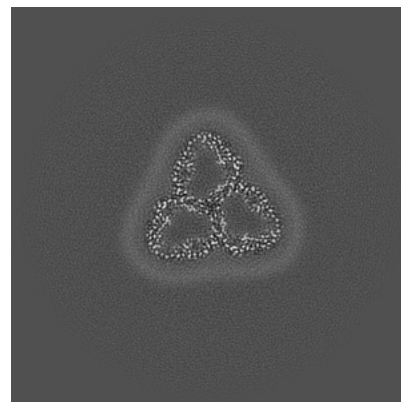
### 6.2.1 Primary map



X Index: 264

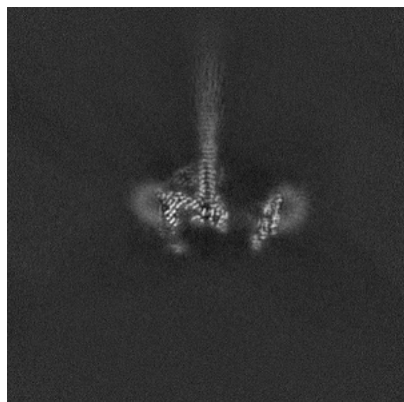


Y Index: 264

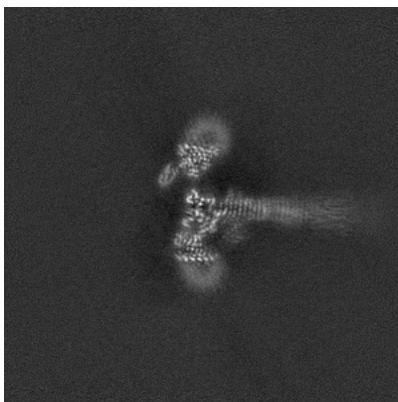


Z Index: 264

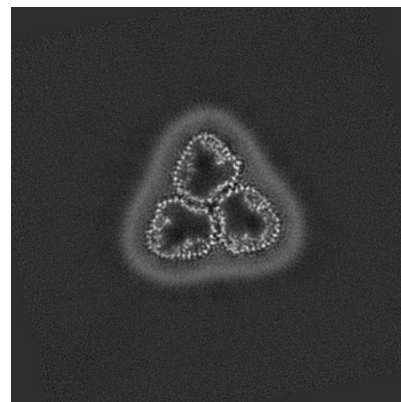
### 6.2.2 Raw map



X Index: 264



Y Index: 264

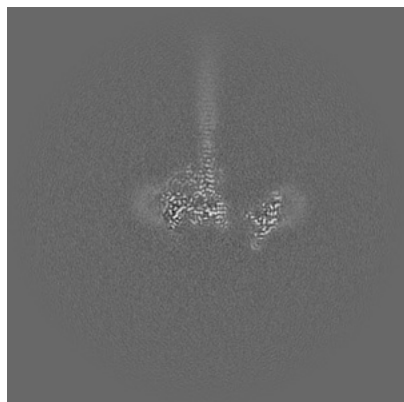


Z Index: 264

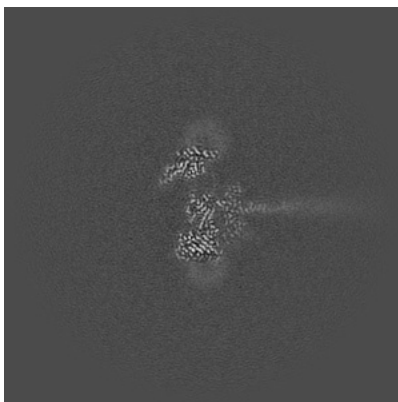
The images above show central slices of the map in three orthogonal directions.

## 6.3 Largest variance slices [i](#)

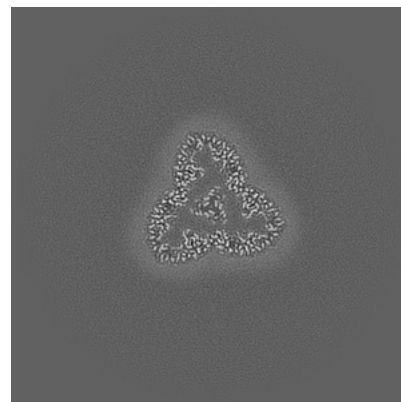
### 6.3.1 Primary map



X Index: 268

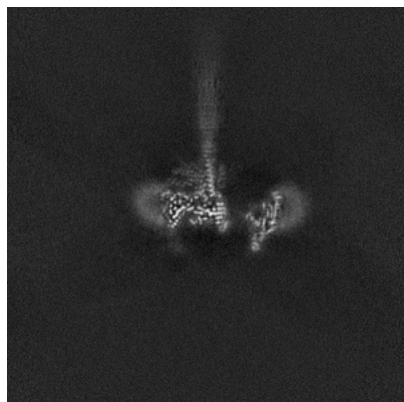


Y Index: 272

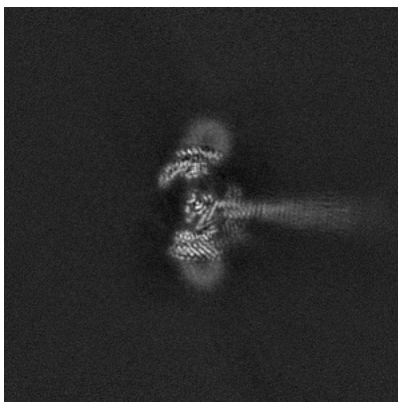


Z Index: 246

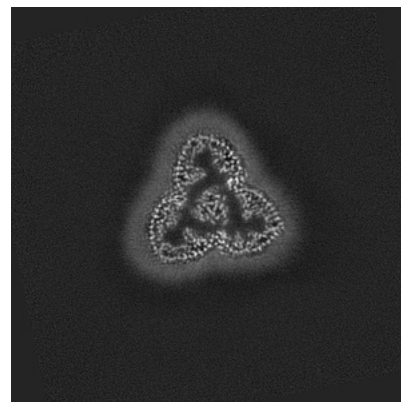
### 6.3.2 Raw map



X Index: 268



Y Index: 271

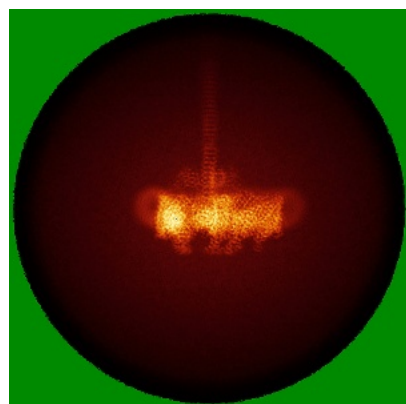


Z Index: 247

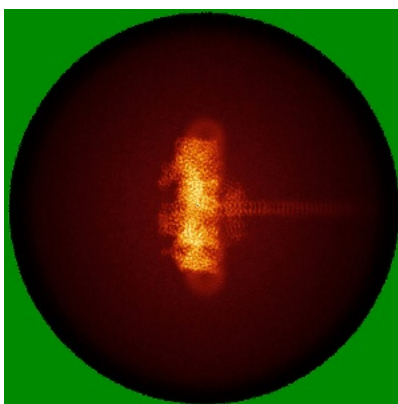
The images above show the largest variance slices of the map in three orthogonal directions.

## 6.4 Orthogonal standard-deviation projections (False-color) [i](#)

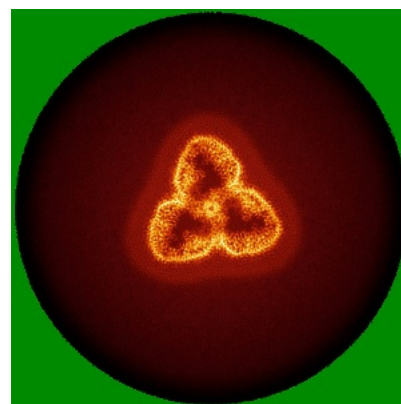
### 6.4.1 Primary map



X

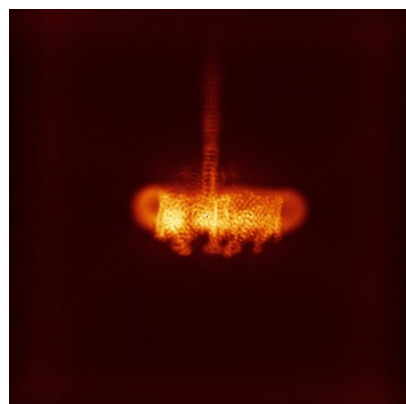


Y

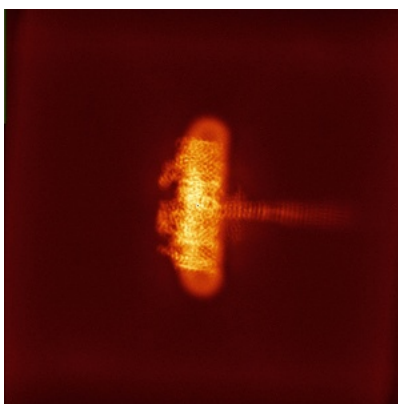


Z

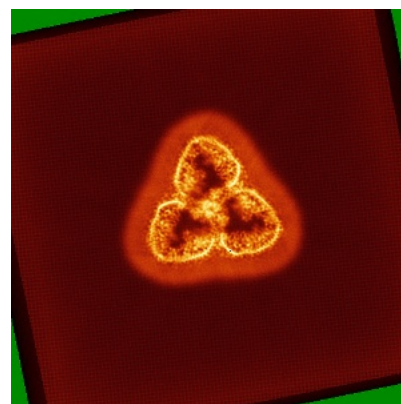
### 6.4.2 Raw map



X



Y

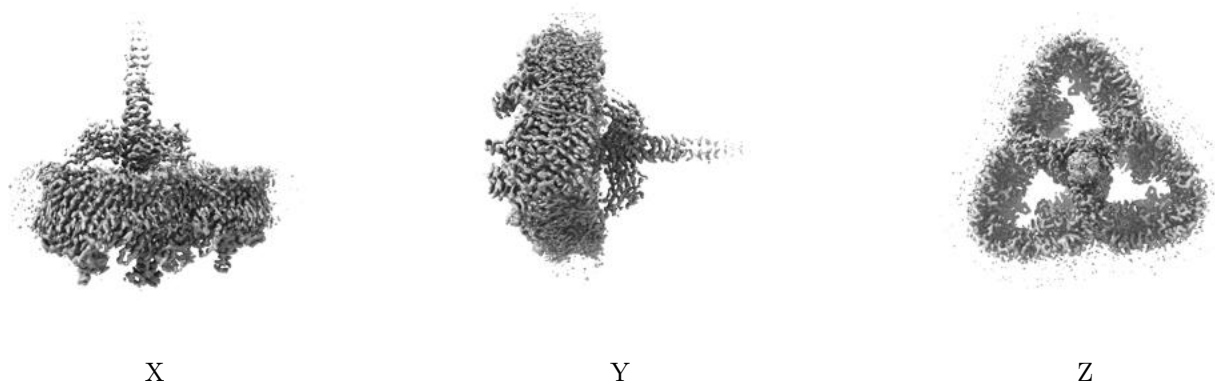


Z

The images above show the map standard deviation projections with false color in three orthogonal directions. Minimum values are shown in green, max in blue, and dark to light orange shades represent small to large values respectively.

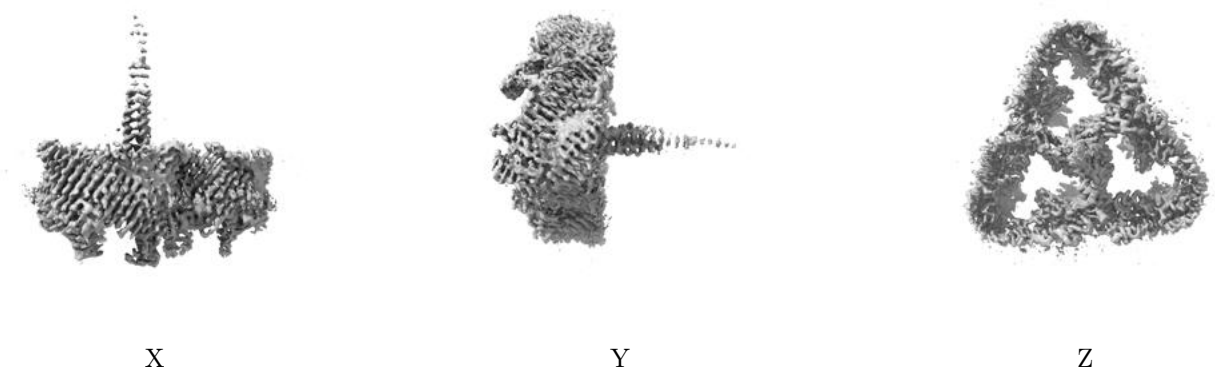
## 6.5 Orthogonal surface views [i](#)

### 6.5.1 Primary map



The images above show the 3D surface view of the map at the recommended contour level 0.46. These images, in conjunction with the slice images, may facilitate assessment of whether an appropriate contour level has been provided.

### 6.5.2 Raw map



These images show the 3D surface of the raw map. The raw map's contour level was selected so that its surface encloses the same volume as the primary map does at its recommended contour level.

## 6.6 Mask visualisation [i](#)

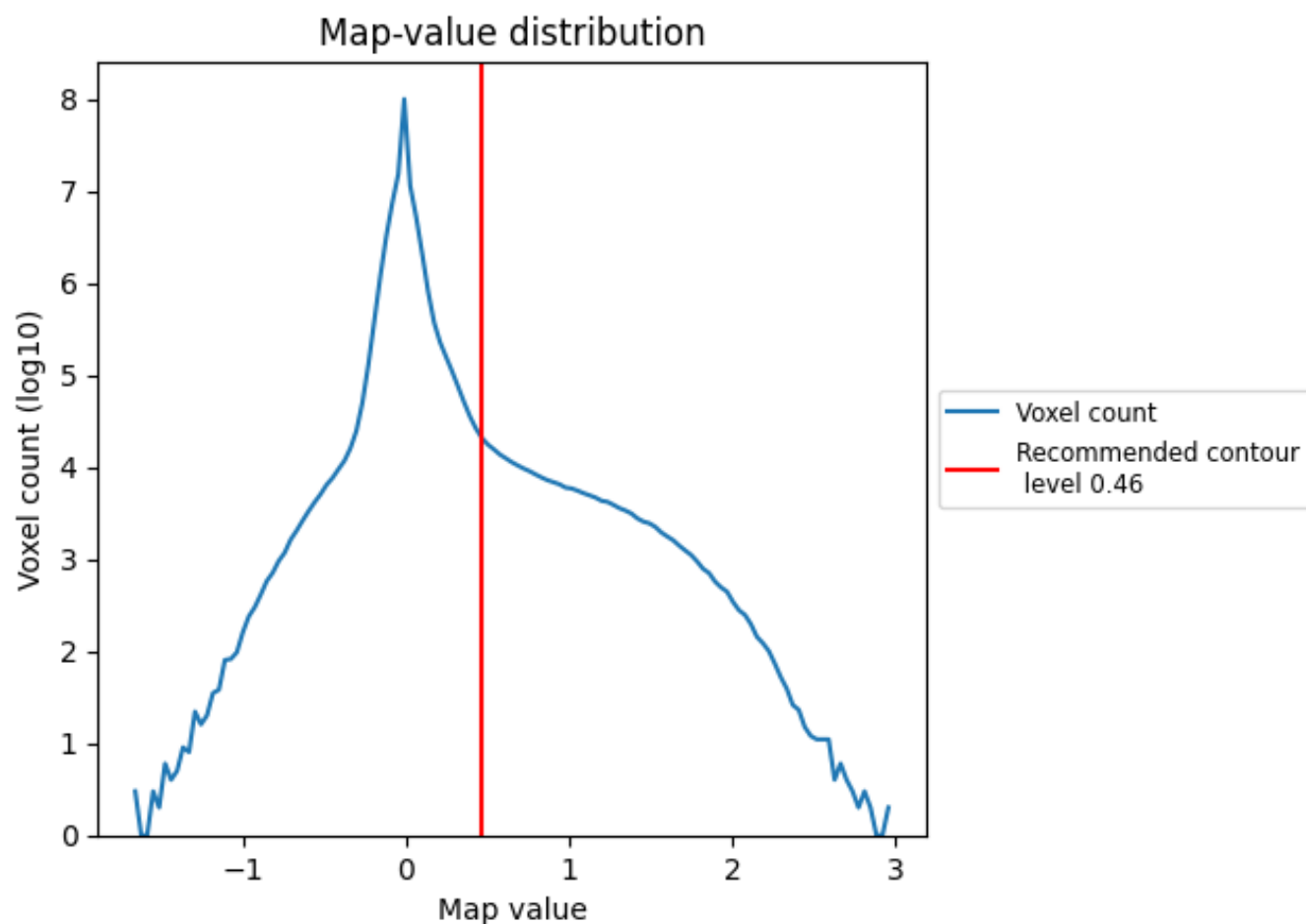
This section was not generated. No masks/segmentation were deposited.



## 7 Map analysis [i](#)

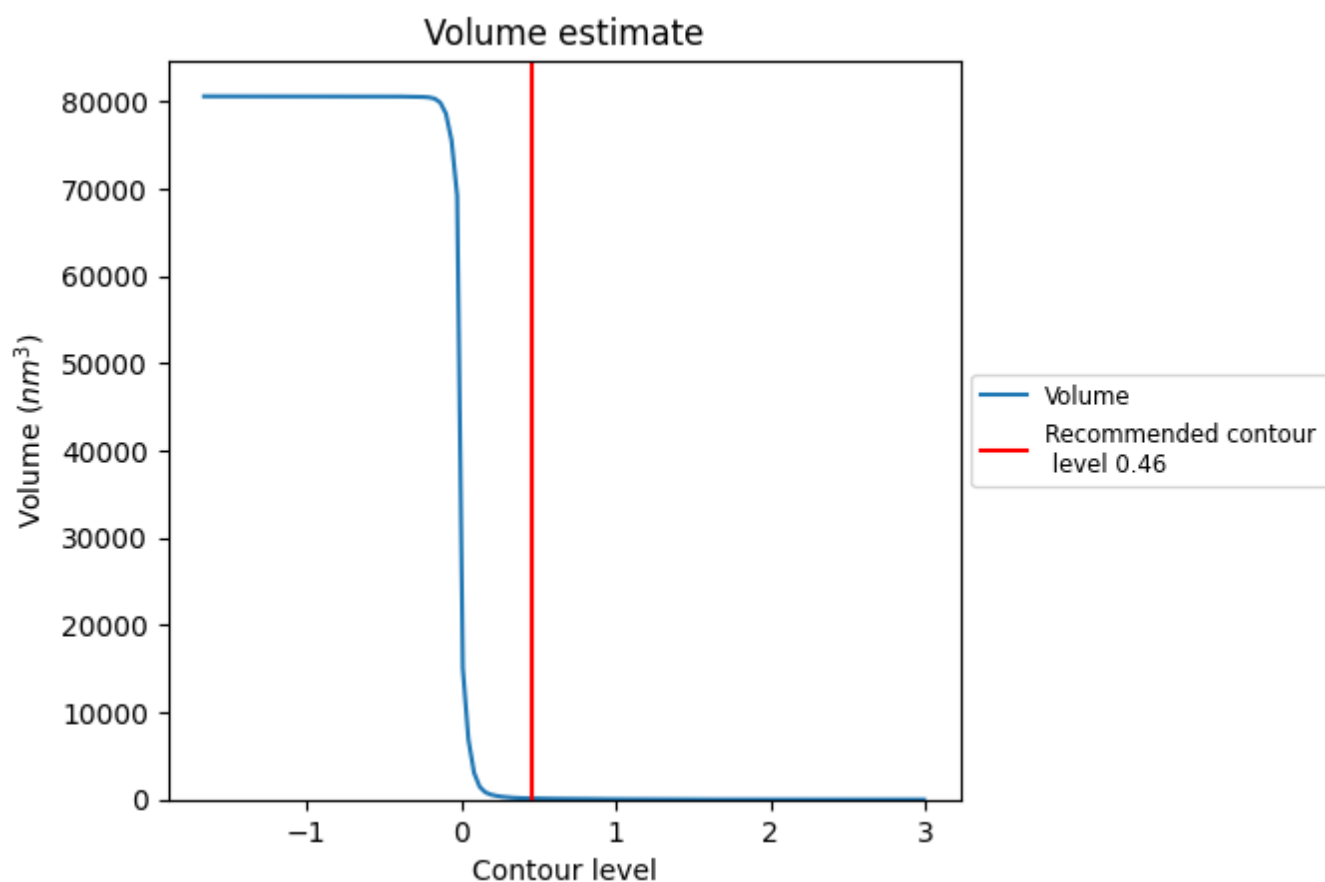
This section contains the results of statistical analysis of the map.

### 7.1 Map-value distribution [i](#)



The map-value distribution is plotted in 128 intervals along the x-axis. The y-axis is logarithmic. A spike in this graph at zero usually indicates that the volume has been masked.

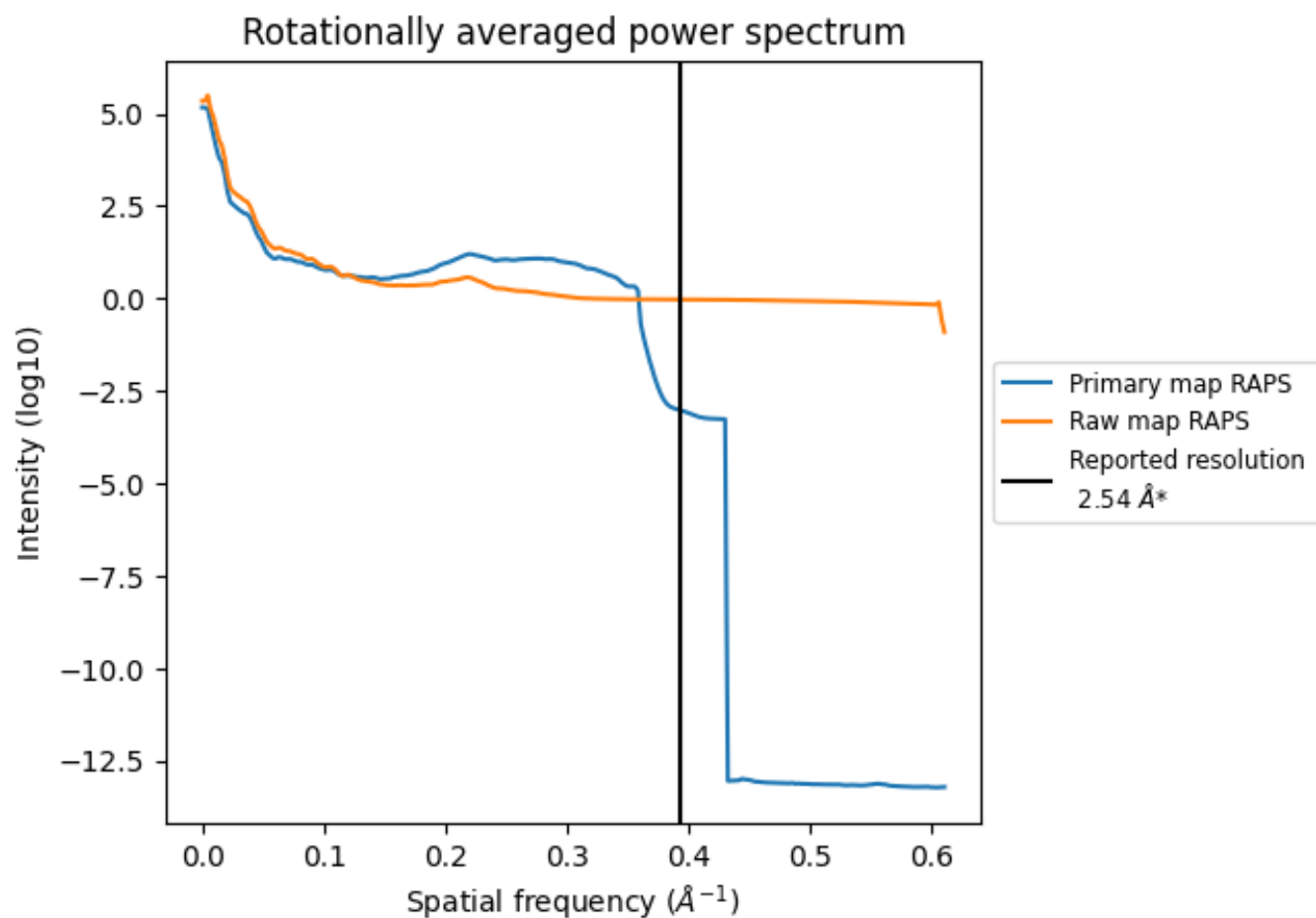
## 7.2 Volume estimate [i](#)



The volume at the recommended contour level is 131 nm<sup>3</sup>; this corresponds to an approximate mass of 118 kDa.

The volume estimate graph shows how the enclosed volume varies with the contour level. The recommended contour level is shown as a vertical line and the intersection between the line and the curve gives the volume of the enclosed surface at the given level.

### 7.3 Rotationally averaged power spectrum ⓘ



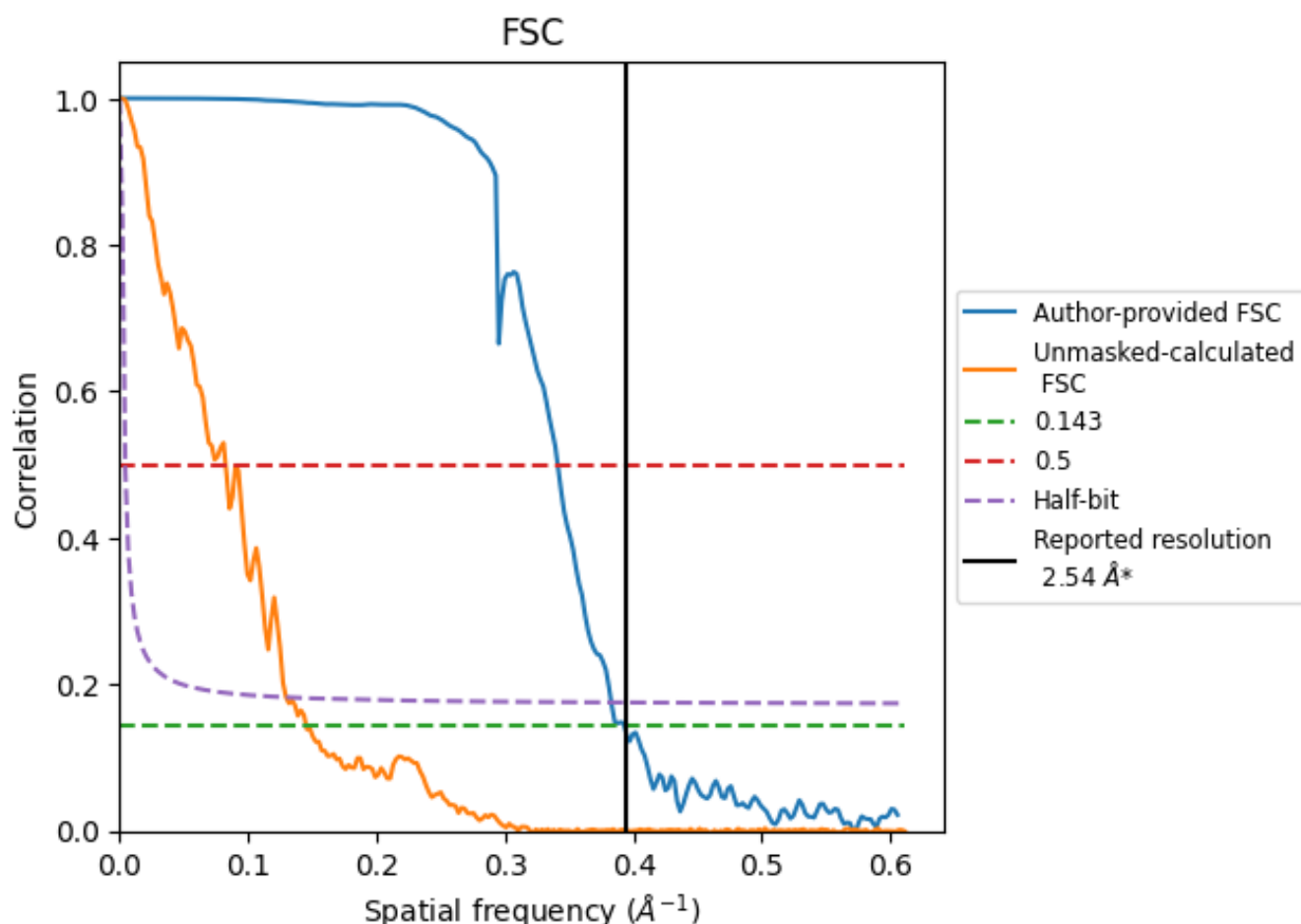
\*Reported resolution corresponds to spatial frequency of 0.394  $\text{\AA}^{-1}$



## 8 Fourier-Shell correlation [i](#)

Fourier-Shell Correlation (FSC) is the most commonly used method to estimate the resolution of single-particle and subtomogram-averaged maps. The shape of the curve depends on the imposed symmetry, mask and whether or not the two 3D reconstructions used were processed from a common reference. The reported resolution is shown as a black line. A curve is displayed for the half-bit criterion in addition to lines showing the 0.143 gold standard cut-off and 0.5 cut-off.

### 8.1 FSC [i](#)



\*Reported resolution corresponds to spatial frequency of 0.394 Å<sup>-1</sup>

## 8.2 Resolution estimates [i](#)

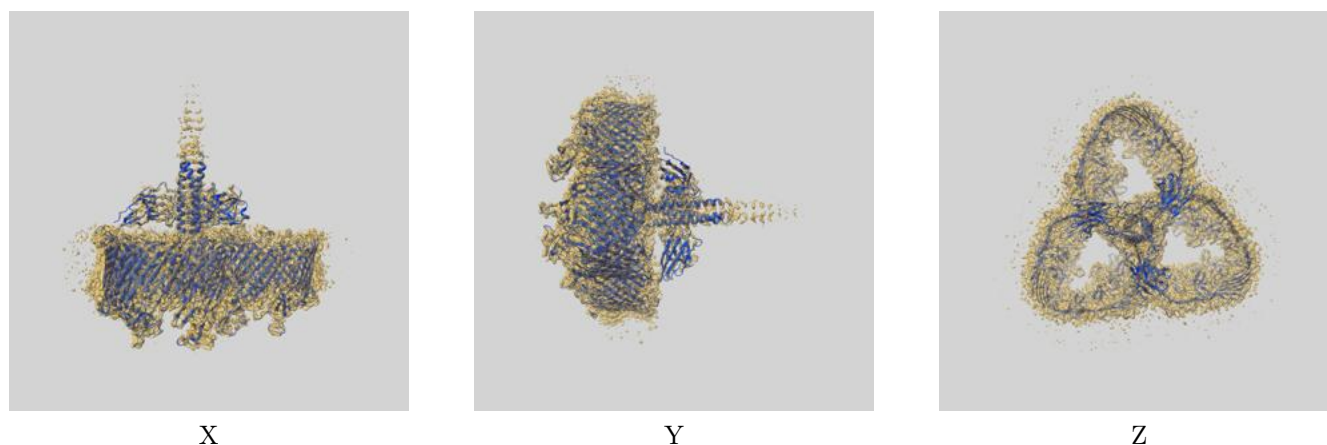
Resolution estimate (Å)	Estimation criterion (FSC cut-off)		
	0.143	0.5	Half-bit
Reported by author	2.54	-	-
Author-provided FSC curve	2.54	2.93	2.61
Unmasked-calculated*	6.88	12.11	7.72

\*Resolution estimate based on FSC curve calculated by comparison of deposited half-maps. The value from deposited half-maps intersecting FSC 0.143 CUT-OFF 6.88 differs from the reported value 2.54 by more than 10 %

## 9 Map-model fit [i](#)

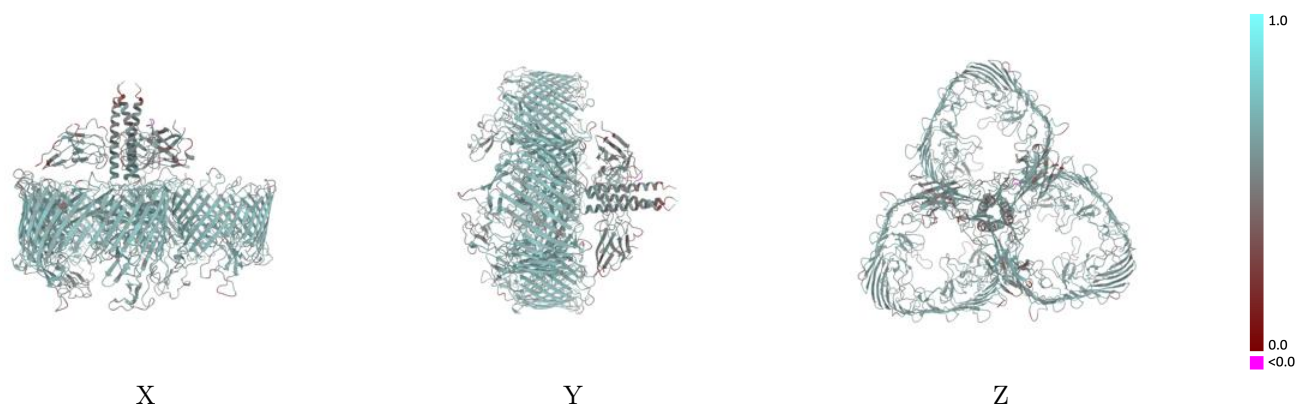
This section contains information regarding the fit between EMDB map EMD-14715 and PDB model 8ACQ. Per-residue inclusion information can be found in section [3](#) on page [8](#).

### 9.1 Map-model overlay [i](#)



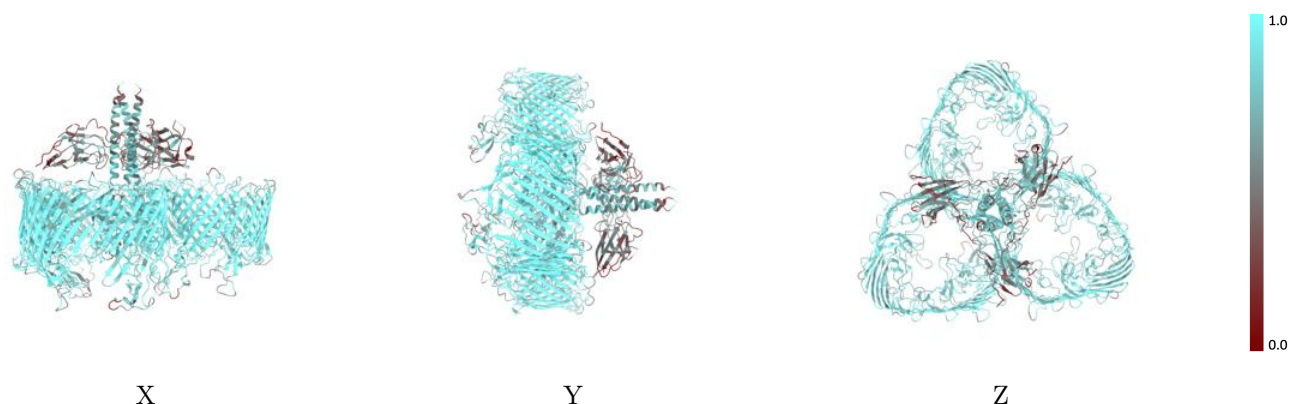
The images above show the 3D surface view of the map at the recommended contour level 0.46 at 50% transparency in yellow overlaid with a ribbon representation of the model coloured in blue. These images allow for the visual assessment of the quality of fit between the atomic model and the map.

## 9.2 Q-score mapped to coordinate model [i](#)



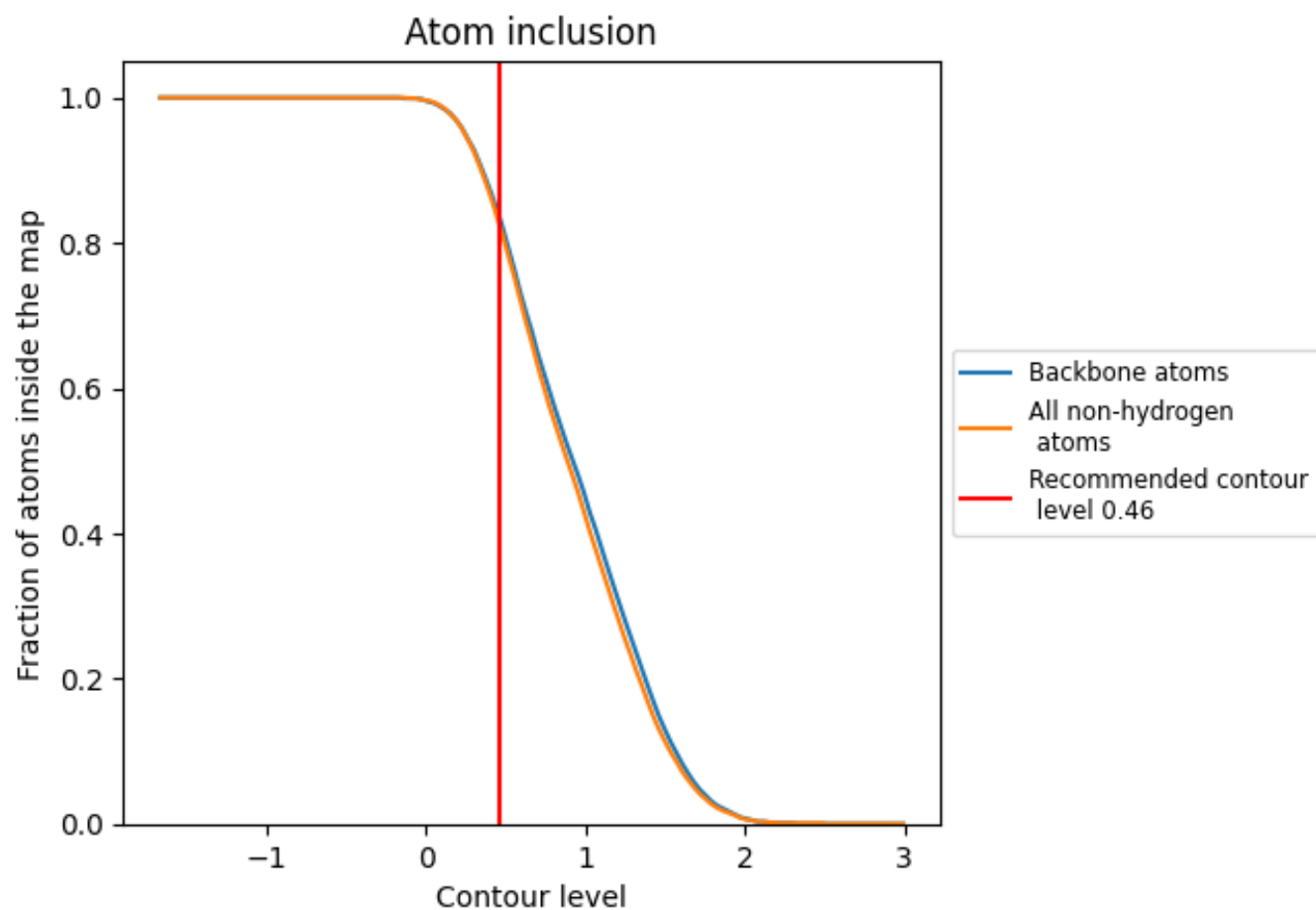
The images above show the model with each residue coloured according to its Q-score. This shows their resolvability in the map with higher Q-score values reflecting better resolvability. Please note: Q-score is calculating the resolvability of atoms, and thus high values are only expected at resolutions at which atoms can be resolved. Low Q-score values may therefore be expected for many entries.

## 9.3 Atom inclusion mapped to coordinate model [i](#)



The images above show the model with each residue coloured according to its atom inclusion. This shows to what extent they are inside the map at the recommended contour level (0.46).

## 9.4 Atom inclusion [i](#)



At the recommended contour level, 84% of all backbone atoms, 83% of all non-hydrogen atoms, are inside the map.

9.5 Map-model fit summary ⓘ

The table lists the average atom inclusion at the recommended contour level (0.46) and Q-score for the entire model and for each chain.

Chain	Atom inclusion	Q-score
All	<div><div></div></div> 0.8270	<div><div></div></div> 0.5790
A	<div><div></div></div> 0.8730	<div><div></div></div> 0.5900
B	<div><div></div></div> 0.8740	<div><div></div></div> 0.5910
C	<div><div></div></div> 0.8700	<div><div></div></div> 0.5890
H	<div><div></div></div> 0.4570	<div><div></div></div> 0.5020
I	<div><div></div></div> 0.4560	<div><div></div></div> 0.4930
L	<div><div></div></div> 0.4430	<div><div></div></div> 0.4710

1.0

0.0

<0.0