



Full wwPDB X-ray Structure Validation Report ⓘ

Jun 24, 2024 – 08:33 AM EDT

PDB ID : 7AC8
Title : Molecular basis for the unique allosteric activation mechanism of the heterodimeric imidazole glycerol phosphate synthase complex.
Authors : Sung, S.; Wilmanns, M.
Deposited on : 2020-09-10
Resolution : 2.06 Å(reported)

This is a Full wwPDB X-ray Structure Validation Report for a publicly released PDB entry.

We welcome your comments at validation@mail.wwpdb.org

A user guide is available at

<https://www.wwpdb.org/validation/2017/XrayValidationReportHelp>

with specific help available everywhere you see the ⓘ symbol.

The types of validation reports are described at

<http://www.wwpdb.org/validation/2017/FAQs#types>.

The following versions of software and data (see [references ⓘ](#)) were used in the production of this report:

MolProbity	:	4.02b-467
Mogul	:	2022.3.0, CSD as543be (2022)
Xtriage (Phenix)	:	1.20.1
EDS	:	2.37.1
buster-report	:	1.1.7 (2018)
Percentile statistics	:	20191225.v01 (using entries in the PDB archive December 25th 2019)
Refmac	:	5.8.0158
CCP4	:	7.0.044 (Gargrove)
Ideal geometry (proteins)	:	Engh & Huber (2001)
Ideal geometry (DNA, RNA)	:	Parkinson et al. (1996)
Validation Pipeline (wwPDB-VP)	:	2.37.1

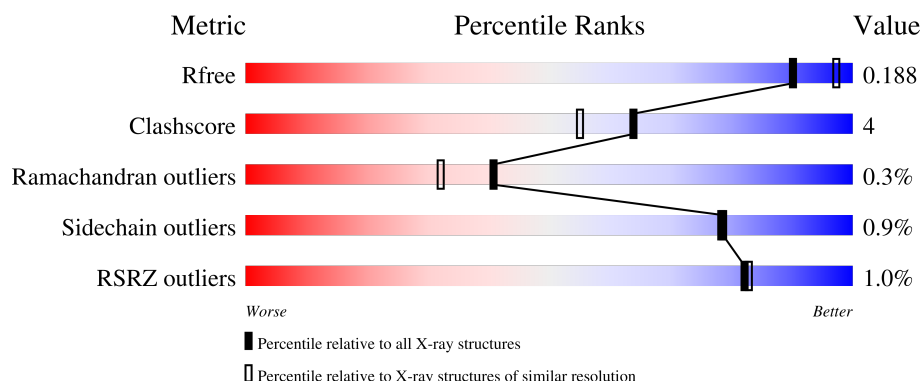
1 Overall quality at a glance

The following experimental techniques were used to determine the structure:

X-RAY DIFFRACTION

The reported resolution of this entry is 2.06 Å.

Percentile scores (ranging between 0-100) for global validation metrics of the entry are shown in the following graphic. The table shows the number of entries on which the scores are based.




Metric	Whole archive (#Entries)	Similar resolution (#Entries, resolution range(Å))
R_{free}	130704	2684 (2.08-2.04)
Clashscore	141614	2801 (2.08-2.04)
Ramachandran outliers	138981	2768 (2.08-2.04)
Sidechain outliers	138945	2768 (2.08-2.04)
RSRZ outliers	127900	2646 (2.08-2.04)

The table below summarises the geometric issues observed across the polymeric chains and their fit to the electron density. The red, orange, yellow and green segments of the lower bar indicate the fraction of residues that contain outliers for ≥ 3 , 2, 1 and 0 types of geometric quality criteria respectively. A grey segment represents the fraction of residues that are not modelled. The numeric value for each fraction is indicated below the corresponding segment, with a dot representing fractions $\leq 5\%$. The upper red bar (where present) indicates the fraction of residues that have poor fit to the electron density. The numeric value is given above the bar.

Mol	Chain	Length	Quality of chain
1	A	253	<div> <div>4%</div> <div>88%</div> <div>11%</div> </div>
1	C	253	<div> <div>94%</div> <div>5%</div> </div>
1	E	253	<div> <div>89%</div> <div>9%</div> <div>.</div> </div>
2	B	203	<div> <div>90%</div> <div>8%</div> <div>.</div> </div>
2	D	203	<div> <div>%</div> <div>92%</div> <div>6%</div> <div>.</div> </div>

Continued on next page...

Continued from previous page...

Mol	Chain	Length	Quality of chain
2	F	203	 A horizontal bar chart showing the quality of the chain. The bar is divided into three segments: a green segment representing 86%, a yellow segment representing 11%, and a small grey segment at the end. A small black dot is located at the end of the grey segment.

2 Entry composition

There are 6 unique types of molecules in this entry. The entry contains 11328 atoms, of which 0 are hydrogens and 0 are deuteriums.

In the tables below, the ZeroOcc column contains the number of atoms modelled with zero occupancy, the AltConf column contains the number of residues with at least one atom in alternate conformation and the Trace column contains the number of residues modelled with at most 2 atoms.

- Molecule 1 is a protein called Imidazole glycerol phosphate synthase subunit HisF.

Mol	Chain	Residues	Atoms					ZeroOcc	AltConf	Trace
1	A	252	Total	C	N	O	S	0	0	0
			1918	1223	321	368	6			
1	C	252	Total	C	N	O	S	0	0	0
			1938	1233	330	369	6			
1	E	251	Total	C	N	O	S	0	0	0
			1938	1233	329	370	6			

- Molecule 2 is a protein called Imidazole glycerol phosphate synthase subunit HisH.

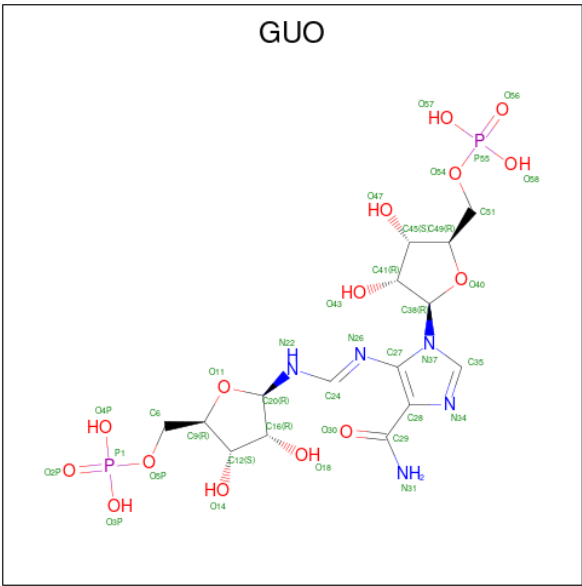
Mol	Chain	Residues	Atoms					ZeroOcc	AltConf	Trace
2	B	202	Total	C	N	O	S	0	0	0
			1620	1033	283	296	8			
2	D	201	Total	C	N	O	S	0	0	0
			1615	1030	282	295	8			
2	F	198	Total	C	N	O	S	0	0	0
			1597	1020	279	291	7			

There are 9 discrepancies between the modelled and reference sequences:

Chain	Residue	Modelled	Actual	Comment	Reference
B	-1	MET	-	initiating methionine	UNP Q9X0C8
B	0	GLY	-	expression tag	UNP Q9X0C8
B	84	ALA	CYS	engineered mutation	UNP Q9X0C8
D	-1	MET	-	initiating methionine	UNP Q9X0C8
D	0	GLY	-	expression tag	UNP Q9X0C8
D	84	ALA	CYS	engineered mutation	UNP Q9X0C8
F	-1	MET	-	initiating methionine	UNP Q9X0C8
F	0	GLY	-	expression tag	UNP Q9X0C8
F	84	ALA	CYS	engineered mutation	UNP Q9X0C8

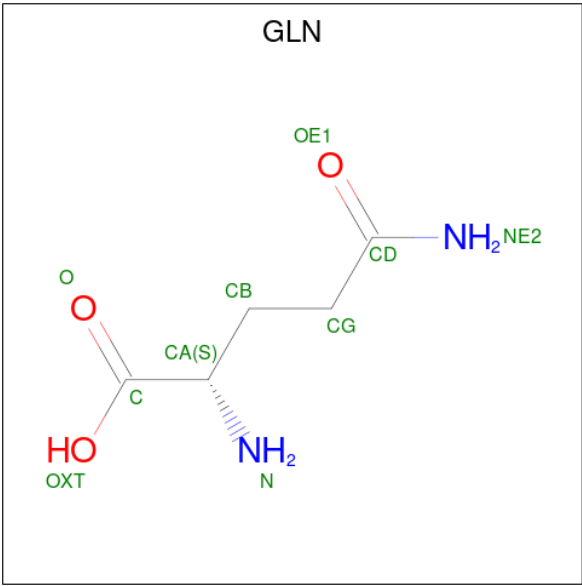
- Molecule 3 is [(2R,3S,4R,5R)-5-[4-aminocarbonyl-5-[(E)-[[[(2R,3R,4S,5R)-3,4-bis(oxidanyl)-5-(phosphonooxymethyl)oxolan-2-yl]amino]methylideneamino]imidazol-1-yl]-3,4-bis(oxidanyl)oxolan-2-yl]methyl dihydrogen phosphate (three-letter code: GUO) (formula:

C₁₅H₂₅N₅O₁₅P₂) (labeled as "Ligand of Interest" by depositor).



Mol	Chain	Residues	Atoms					ZeroOcc	AltConf
3	A	1	Total	C	N	O	P	0	0
			37	15	5	15	2		
3	E	1	Total	C	N	O	P	0	0
			37	15	5	15	2		

- Molecule 4 is GLUTAMINE (three-letter code: GLN) (formula: C₅H₁₀N₂O₃).



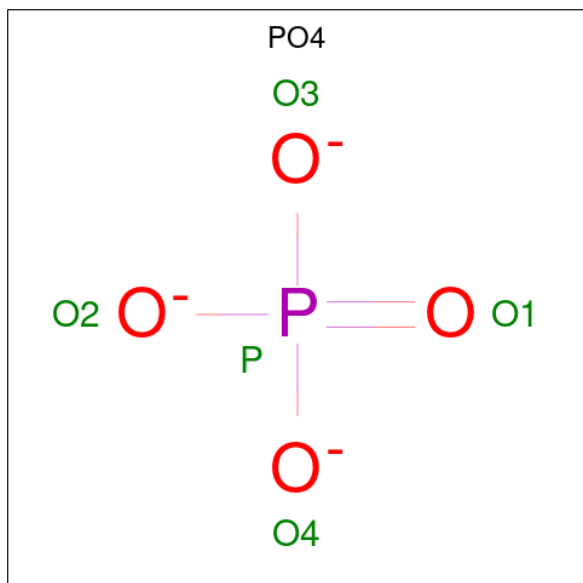
Mol	Chain	Residues	Atoms				ZeroOcc	AltConf
4	B	1	Total	C	N	O	0	0
			10	5	2	3		

Continued on next page...

Continued from previous page...

Mol	Chain	Residues	Atoms				ZeroOcc	AltConf
4	D	1	Total	C	N	O	0	0
			10	5	2	3		
4	F	1	Total	C	N	O	0	0
			10	5	2	3		

- Molecule 5 is PHOSPHATE ION (three-letter code: PO4) (formula: O₄P) (labeled as "Ligand of Interest" by depositor).



Mol	Chain	Residues	Atoms			ZeroOcc	AltConf
5	C	1	Total	O	P	0	0
			5	4	1		

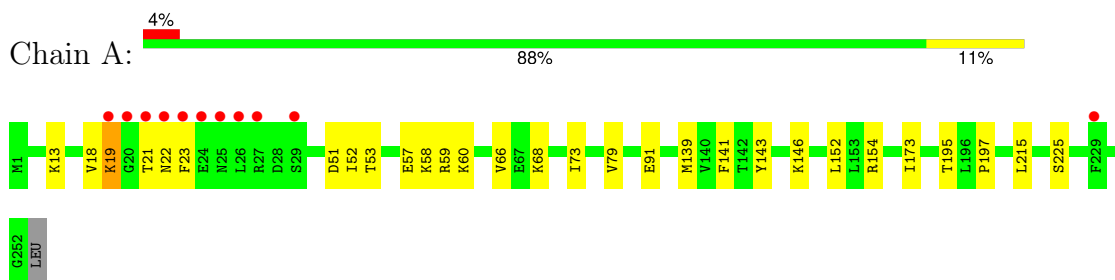
- Molecule 6 is water.

Mol	Chain	Residues	Atoms		ZeroOcc	AltConf
6	A	66	Total	O	0	0
			66	66		
6	B	74	Total	O	0	0
			74	74		
6	C	147	Total	O	0	0
			147	147		
6	D	124	Total	O	0	0
			124	124		
6	E	120	Total	O	0	0
			120	120		
6	F	62	Total	O	0	0
			62	62		

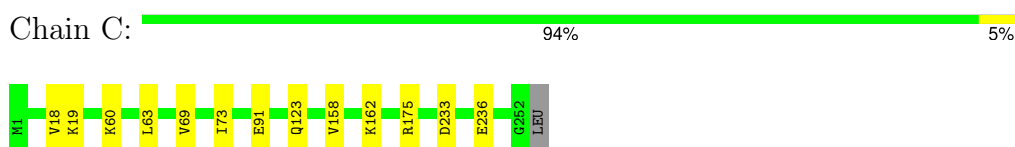
3 Residue-property plots

These plots are drawn for all protein, RNA, DNA and oligosaccharide chains in the entry. The first graphic for a chain summarises the proportions of the various outlier classes displayed in the second graphic. The second graphic shows the sequence view annotated by issues in geometry and electron density. Residues are color-coded according to the number of geometric quality criteria for which they contain at least one outlier: green = 0, yellow = 1, orange = 2 and red = 3 or more. A red dot above a residue indicates a poor fit to the electron density ($RSRZ > 2$). Stretches of 2 or more consecutive residues without any outlier are shown as a green connector. Residues present in the sample, but not in the model, are shown in grey.

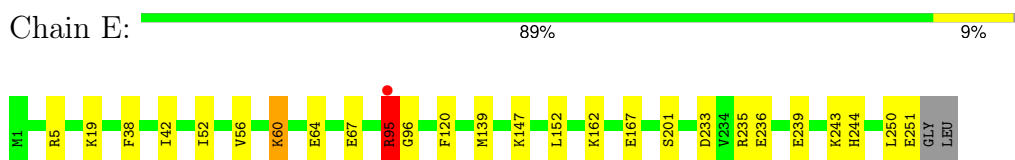
- Molecule 1: Imidazole glycerol phosphate synthase subunit HisF



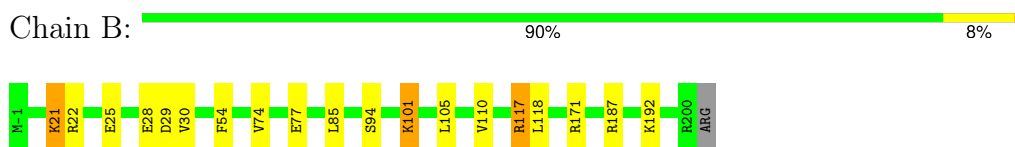
- Molecule 1: Imidazole glycerol phosphate synthase subunit HisF



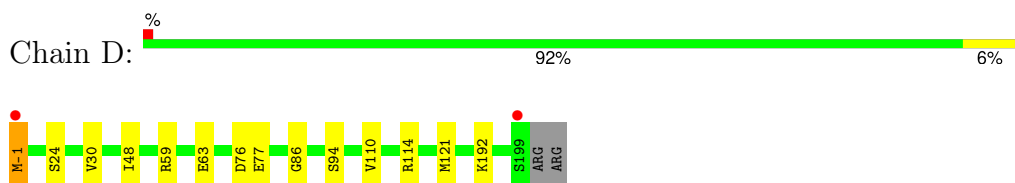
- Molecule 1: Imidazole glycerol phosphate synthase subunit HisF



- Molecule 2: Imidazole glycerol phosphate synthase subunit HisH



- Molecule 2: Imidazole glycerol phosphate synthase subunit HisH



● Molecule 2: Imidazole glycerol phosphate synthase subunit HisH

Chain F:

86%

11%



4 Data and refinement statistics

Property	Value	Source
Space group	P 32	Depositor
Cell constants a, b, c, α , β , γ	92.83Å 92.83Å 168.62Å 90.00° 90.00° 120.00°	Depositor
Resolution (Å)	46.07 – 2.06 46.42 – 2.06	Depositor EDS
% Data completeness (in resolution range)	100.0 (46.07-2.06) 100.0 (46.42-2.06)	Depositor EDS
R_{merge}	0.09	Depositor
R_{sym}	(Not available)	Depositor
$\langle I/\sigma(I) \rangle$ ¹	2.24 (at 2.07Å)	Xtriage
Refinement program	PHENIX 1.17.1_3660	Depositor
R, R_{free}	0.156 , 0.186 0.160 , 0.188	Depositor DCC
R_{free} test set	4833 reflections (4.81%)	wwPDB-VP
Wilson B-factor (Å ²)	40.2	Xtriage
Anisotropy	0.158	Xtriage
Bulk solvent k_{sol} (e/Å ³), B_{sol} (Å ²)	0.34 , 53.3	EDS
L-test for twinning ²	$\langle L \rangle = 0.48$, $\langle L^2 \rangle = 0.30$	Xtriage
Estimated twinning fraction	0.015 for -h,-k,l 0.052 for h,-h-k,-l 0.027 for -k,-h,-l	Xtriage
F_o, F_c correlation	0.97	EDS
Total number of atoms	11328	wwPDB-VP
Average B, all atoms (Å ²)	49.0	wwPDB-VP

Xtriage's analysis on translational NCS is as follows: *The largest off-origin peak in the Patterson function is 2.90% of the height of the origin peak. No significant pseudotranslation is detected.*

¹Intensities estimated from amplitudes.

²Theoretical values of $\langle |L| \rangle$, $\langle L^2 \rangle$ for acentric reflections are 0.5, 0.333 respectively for untwinned datasets, and 0.375, 0.2 for perfectly twinned datasets.

5 Model quality

5.1 Standard geometry

Bond lengths and bond angles in the following residue types are not validated in this section: PO4, GUO

The Z score for a bond length (or angle) is the number of standard deviations the observed value is removed from the expected value. A bond length (or angle) with $|Z| > 5$ is considered an outlier worth inspection. RMSZ is the root-mean-square of all Z scores of the bond lengths (or angles).

Mol	Chain	Bond lengths		Bond angles	
		RMSZ	$\# Z > 5$	RMSZ	$\# Z > 5$
1	A	0.42	0/1944	0.74	2/2623 (0.1%)
1	C	0.43	0/1965	0.61	0/2649
1	E	0.42	0/1965	0.64	1/2649 (0.0%)
2	B	0.48	0/1654	0.68	4/2225 (0.2%)
2	D	0.46	0/1649	0.61	1/2218 (0.0%)
2	F	0.43	0/1631	0.60	3/2195 (0.1%)
All	All	0.44	0/10808	0.65	11/14559 (0.1%)

There are no bond length outliers.

All (11) bond angle outliers are listed below:

Mol	Chain	Res	Type	Atoms	Z	Observed(°)	Ideal(°)
2	B	117	ARG	NE-CZ-NH1	-8.54	116.03	120.30
2	B	117	ARG	CA-CB-CG	-7.81	96.22	113.40
1	A	19	LYS	CD-CE-NZ	-7.32	94.88	111.70
2	F	39	ARG	NE-CZ-NH1	6.10	123.35	120.30
2	B	101	LYS	CD-CE-NZ	-5.80	98.37	111.70
1	A	68	LYS	CA-CB-CG	5.69	125.92	113.40
1	E	95	ARG	NE-CZ-NH2	5.65	123.12	120.30
2	D	114	ARG	NE-CZ-NH2	-5.55	117.53	120.30
2	F	39	ARG	NE-CZ-NH2	-5.36	117.62	120.30
2	F	25	GLU	CB-CA-C	-5.26	99.88	110.40
2	B	117	ARG	CB-CG-CD	5.05	124.72	111.60

There are no chirality outliers.

There are no planarity outliers.

5.2 Too-close contacts ⓘ

In the following table, the Non-H and H(model) columns list the number of non-hydrogen atoms and hydrogen atoms in the chain respectively. The H(added) column lists the number of hydrogen atoms added and optimized by MolProbity. The Clashes column lists the number of clashes within the asymmetric unit, whereas Symm-Clashes lists symmetry-related clashes.

Mol	Chain	Non-H	H(model)	H(added)	Clashes	Symm-Clashes
1	A	1918	0	1947	28	0
1	C	1938	0	1978	8	0
1	E	1938	0	1979	19	0
2	B	1620	0	1612	12	0
2	D	1615	0	1610	10	0
2	F	1597	0	1593	18	0
3	A	37	0	21	4	0
3	E	37	0	21	3	0
4	B	10	0	7	0	0
4	D	10	0	7	0	0
4	F	10	0	7	0	0
5	C	5	0	0	0	0
6	A	66	0	0	0	0
6	B	74	0	0	0	0
6	C	147	0	0	2	0
6	D	124	0	0	0	0
6	E	120	0	0	2	0
6	F	62	0	0	0	0
All	All	11328	0	10782	91	0

The all-atom clashscore is defined as the number of clashes found per 1000 atoms (including hydrogen atoms). The all-atom clashscore for this structure is 4.

All (91) close contacts within the same asymmetric unit are listed below, sorted by their clash magnitude.

Atom-1	Atom-2	Interatomic distance (Å)	Clash overlap (Å)
1:A:21:THR:HG22	1:A:22:ASN:H	1.38	0.87
3:A:301:GUO:HN31	3:A:301:GUO:H24	1.47	0.80
1:C:69:VAL:HG13	1:C:73:ILE:HG13	1.65	0.77
1:A:146:LYS:HE3	1:A:146:LYS:CA	2.15	0.76
1:A:21:THR:HG22	1:A:22:ASN:N	2.05	0.71
1:C:63:LEU:HD21	1:C:91:GLU:HG3	1.73	0.71
1:A:57:GLU:OE1	1:A:60:LYS:NZ	2.23	0.70
1:C:60:LYS:NZ	6:C:401:HOH:O	2.25	0.69
1:A:21:THR:HG21	1:A:23:PHE:CD2	2.29	0.67

Continued on next page...

Continued from previous page...

Atom-1	Atom-2	Interatomic distance (Å)	Clash overlap (Å)
1:C:158:VAL:HG12	1:C:162:LYS:HE2	1.76	0.66
2:F:24:SER:HB2	2:F:30:VAL:HG11	1.77	0.66
1:A:143:TYR:O	1:A:146:LYS:HB2	1.95	0.66
1:E:67:GLU:CD	1:E:95:ARG:HD2	2.16	0.66
1:A:195:THR:OG1	2:B:117:ARG:NH2	2.30	0.64
2:F:1:MET:SD	2:F:3:ILE:HG13	2.38	0.63
1:E:120:PHE:HA	2:F:52:GLY:HA2	1.81	0.63
2:F:22:ARG:O	2:F:25:GLU:HB2	2.00	0.62
1:A:146:LYS:HA	1:A:146:LYS:CE	2.29	0.62
3:E:301:GUO:O30	3:E:301:GUO:H24	2.01	0.61
1:A:146:LYS:HE3	1:A:146:LYS:HA	1.81	0.61
2:B:28:GLU:O	2:B:30:VAL:N	2.35	0.60
1:E:139:MET:SD	1:E:152:LEU:HD23	2.42	0.58
3:A:301:GUO:HN31	3:A:301:GUO:C24	2.14	0.58
2:B:117:ARG:HG3	2:B:118:LEU:N	2.20	0.56
1:E:235:ARG:NH2	1:E:251:GLU:OE2	2.30	0.56
2:D:24:SER:HB2	2:D:30:VAL:HG11	1.86	0.56
1:A:21:THR:CG2	1:A:22:ASN:H	2.12	0.56
2:D:-1:MET:HE1	2:D:-1:MET:N	2.23	0.54
2:D:-1:MET:N	2:D:-1:MET:CE	2.71	0.54
2:F:1:MET:CE	2:F:3:ILE:CG1	2.86	0.53
1:A:215:LEU:HD12	2:F:162:ILE:HD11	1.91	0.53
1:A:197:PRO:HD3	2:B:117:ARG:HD2	1.91	0.52
1:A:51:ASP:OD1	1:A:58:LYS:HE2	2.09	0.52
6:C:465:HOH:O	1:E:244:HIS:HD2	1.91	0.52
1:E:147:LYS:HE2	6:E:475:HOH:O	2.11	0.51
1:A:152:LEU:HD13	1:A:154:ARG:NH1	2.25	0.51
2:B:94:SER:HB2	2:B:110:VAL:HB	1.93	0.50
2:D:-1:MET:HE1	2:D:-1:MET:H1	1.77	0.50
1:E:67:GLU:HB2	1:E:95:ARG:HH11	1.77	0.50
1:A:66:VAL:HG22	1:A:79:VAL:HG11	1.94	0.49
1:A:13:LYS:HA	1:A:53:THR:OG1	2.13	0.49
1:C:18:VAL:HG12	1:C:19:LYS:HG3	1.95	0.48
2:F:79:TYR:CE2	2:F:171:ARG:HD3	2.49	0.48
2:B:77:GLU:HB3	2:B:171:ARG:HH11	1.78	0.47
1:A:21:THR:CG2	1:A:22:ASN:N	2.75	0.46
2:B:77:GLU:HB3	2:B:171:ARG:NH1	2.29	0.46
1:C:175:ARG:HH22	1:E:243:LYS:NZ	2.14	0.46
2:F:25:GLU:OE2	2:F:187:ARG:NH2	2.43	0.46
2:B:74:VAL:HG21	2:B:105:LEU:HD22	1.97	0.46
1:E:38:PHE:CE2	1:E:42:ILE:HD13	2.51	0.46

Continued on next page...

Continued from previous page...

Atom-1	Atom-2	Interatomic distance (Å)	Clash overlap (Å)
1:E:233:ASP:HB3	1:E:236:GLU:HB2	1.98	0.45
1:A:18:VAL:HG21	1:A:52:ILE:HD11	1.98	0.45
1:E:64:GLU:H	1:E:64:GLU:CD	2.20	0.45
1:E:239:GLU:HG2	1:E:250:LEU:HD21	1.99	0.45
2:F:17:TYR:CE2	2:F:21:LYS:HE3	2.52	0.44
2:B:21:LYS:HE3	2:B:21:LYS:HB2	1.76	0.44
1:A:146:LYS:CA	1:A:146:LYS:CE	2.83	0.43
2:D:76:ASP:O	2:D:77:GLU:HB2	2.17	0.43
1:A:13:LYS:HB2	1:A:18:VAL:HG22	2.01	0.43
1:E:67:GLU:OE1	1:E:95:ARG:NH1	2.51	0.43
2:F:71:ARG:O	2:F:75:GLU:HG2	2.17	0.43
2:F:1:MET:HE1	2:F:3:ILE:HG12	2.00	0.43
2:F:1:MET:HE3	2:F:3:ILE:HD11	2.01	0.43
2:B:54:PHE:HA	2:B:85:LEU:HD11	2.01	0.42
2:D:59:ARG:NH1	2:D:63:GLU:OE2	2.51	0.42
1:E:5:ARG:NH2	1:E:167:GLU:OE2	2.43	0.42
2:D:-1:MET:CE	2:D:-1:MET:H3	2.32	0.42
1:E:52:ILE:HB	3:E:301:GUO:C35	2.49	0.42
1:A:225:SER:OG	3:A:301:GUO:O4P	2.33	0.42
2:D:48:ILE:O	2:D:86:GLY:HA3	2.20	0.42
1:E:201:SER:OG	3:E:301:GUO:H9	2.20	0.42
1:C:123:GLN:HB2	2:D:121:MET:SD	2.60	0.41
2:F:1:MET:CE	2:F:3:ILE:HG12	2.50	0.41
1:A:59:ARG:HH21	1:A:91:GLU:CD	2.24	0.41
1:E:60:LYS:H	1:E:60:LYS:HE2	1.85	0.41
1:E:56:VAL:HG22	6:E:410:HOH:O	2.20	0.41
1:A:13:LYS:HG3	1:A:53:THR:HA	2.01	0.41
2:F:101:LYS:HG3	2:F:102:GLY:O	2.21	0.41
2:D:94:SER:HB2	2:D:110:VAL:HB	2.03	0.41
2:B:22:ARG:O	2:B:25:GLU:HG3	2.21	0.41
3:A:301:GUO:H24	3:A:301:GUO:N31	2.26	0.41
1:A:141:PHE:HB2	1:A:173:ILE:HD11	2.01	0.41
1:A:215:LEU:CD1	2:F:162:ILE:HD11	2.51	0.41
1:E:162:LYS:HE2	1:E:162:LYS:HB2	1.85	0.41
1:A:73:ILE:HD12	1:A:73:ILE:HA	1.99	0.41
2:F:1:MET:CE	2:F:3:ILE:HG13	2.50	0.40
1:A:197:PRO:HD3	2:B:117:ARG:CD	2.51	0.40
1:C:233:ASP:HB3	1:C:236:GLU:HB2	2.02	0.40
2:F:58:MET:SD	2:F:89:LEU:HD22	2.61	0.40
2:F:123:TRP:CH2	2:F:182:SER:HA	2.56	0.40
1:A:139:MET:SD	1:A:152:LEU:HD23	2.62	0.40

There are no symmetry-related clashes.

5.3 Torsion angles [i](#)

5.3.1 Protein backbone [i](#)

In the following table, the Percentiles column shows the percent Ramachandran outliers of the chain as a percentile score with respect to all X-ray entries followed by that with respect to entries of similar resolution.

The Analysed column shows the number of residues for which the backbone conformation was analysed, and the total number of residues.

Mol	Chain	Analysed	Favoured	Allowed	Outliers	Percentiles	
1	A	250/253 (99%)	243 (97%)	6 (2%)	1 (0%)	34	25
1	C	250/253 (99%)	246 (98%)	4 (2%)	0	100	100
1	E	249/253 (98%)	244 (98%)	4 (2%)	1 (0%)	34	25
2	B	200/203 (98%)	194 (97%)	5 (2%)	1 (0%)	29	19
2	D	199/203 (98%)	194 (98%)	5 (2%)	0	100	100
2	F	196/203 (97%)	191 (97%)	4 (2%)	1 (0%)	29	19
All	All	1344/1368 (98%)	1312 (98%)	28 (2%)	4 (0%)	41	32

All (4) Ramachandran outliers are listed below:

Mol	Chain	Res	Type
1	A	19	LYS
2	B	29	ASP
1	E	96	GLY
2	F	51	VAL

5.3.2 Protein sidechains [i](#)

In the following table, the Percentiles column shows the percent sidechain outliers of the chain as a percentile score with respect to all X-ray entries followed by that with respect to entries of similar resolution.

The Analysed column shows the number of residues for which the sidechain conformation was analysed, and the total number of residues.

Mol	Chain	Analysed	Rotameric	Outliers	Percentiles	
1	A	202/208 (97%)	202 (100%)	0	100	100

Continued on next page...

Continued from previous page...

Mol	Chain	Analysed	Rotameric	Outliers	Percentiles	
1	C	206/208 (99%)	206 (100%)	0	100	100
1	E	207/208 (100%)	204 (99%)	3 (1%)	67	64
2	B	175/177 (99%)	171 (98%)	4 (2%)	50	45
2	D	175/177 (99%)	173 (99%)	2 (1%)	73	72
2	F	173/177 (98%)	172 (99%)	1 (1%)	86	86
All	All	1138/1155 (98%)	1128 (99%)	10 (1%)	78	78

All (10) residues with a non-rotameric sidechain are listed below:

Mol	Chain	Res	Type
2	B	21	LYS
2	B	101	LYS
2	B	187	ARG
2	B	192	LYS
2	D	-1	MET
2	D	192	LYS
1	E	19	LYS
1	E	60	LYS
1	E	95	ARG
2	F	192	LYS

Sometimes sidechains can be flipped to improve hydrogen bonding and reduce clashes. All (2) such sidechains are listed below:

Mol	Chain	Res	Type
2	B	26	ASN
2	F	26	ASN

5.3.3 RNA ⓘ

There are no RNA molecules in this entry.

5.4 Non-standard residues in protein, DNA, RNA chains ⓘ

There are no non-standard protein/DNA/RNA residues in this entry.

5.5 Carbohydrates [i](#)

There are no monosaccharides in this entry.

5.6 Ligand geometry [i](#)

6 ligands are modelled in this entry.

In the following table, the Counts columns list the number of bonds (or angles) for which Mogul statistics could be retrieved, the number of bonds (or angles) that are observed in the model and the number of bonds (or angles) that are defined in the Chemical Component Dictionary. The Link column lists molecule types, if any, to which the group is linked. The Z score for a bond length (or angle) is the number of standard deviations the observed value is removed from the expected value. A bond length (or angle) with $|Z| > 2$ is considered an outlier worth inspection. RMSZ is the root-mean-square of all Z scores of the bond lengths (or angles).

Mol	Type	Chain	Res	Link	Bond lengths			Bond angles		
					Counts	RMSZ	# Z > 2	Counts	RMSZ	# Z > 2
4	GLN	D	301	-	8,9,9	1.02	1 (12%)	8,11,11	0.85	1 (12%)
4	GLN	B	301	-	8,9,9	0.87	1 (12%)	8,11,11	1.05	1 (12%)
5	PO4	C	301	-	4,4,4	0.93	0	6,6,6	0.70	0
3	GUO	E	301	-	35,39,39	4.18	19 (54%)	42,59,59	1.95	11 (26%)
4	GLN	F	301	-	8,9,9	0.84	0	8,11,11	0.78	1 (12%)
3	GUO	A	301	-	35,39,39	4.20	18 (51%)	42,59,59	1.70	6 (14%)

In the following table, the Chirals column lists the number of chiral outliers, the number of chiral centers analysed, the number of these observed in the model and the number defined in the Chemical Component Dictionary. Similar counts are reported in the Torsion and Rings columns. '-' means no outliers of that kind were identified.

Mol	Type	Chain	Res	Link	Chirals	Torsions	Rings
4	GLN	D	301	-	-	1/9/9/9	-
4	GLN	B	301	-	-	1/9/9/9	-
3	GUO	E	301	-	-	7/13/58/58	0/3/3/3
4	GLN	F	301	-	-	0/9/9/9	-
3	GUO	A	301	-	-	2/13/58/58	0/3/3/3

All (39) bond length outliers are listed below:

Mol	Chain	Res	Type	Atoms	Z	Observed(Å)	Ideal(Å)
3	E	301	GUO	C16-C12	-10.63	1.24	1.53
3	A	301	GUO	C16-C12	-10.45	1.25	1.53
3	A	301	GUO	O40-C38	-9.69	1.28	1.40

Continued on next page...

Continued from previous page...

Mol	Chain	Res	Type	Atoms	Z	Observed(Å)	Ideal(Å)
3	E	301	GUO	O40-C38	-9.45	1.28	1.40
3	A	301	GUO	O11-C20	-8.29	1.29	1.43
3	E	301	GUO	O11-C20	-8.17	1.29	1.43
3	A	301	GUO	C29-N31	8.02	1.47	1.33
3	A	301	GUO	O40-C49	7.59	1.61	1.45
3	A	301	GUO	C45-C49	-7.58	1.33	1.53
3	E	301	GUO	C29-N31	7.36	1.46	1.33
3	E	301	GUO	O40-C49	7.33	1.61	1.45
3	E	301	GUO	C45-C49	-7.28	1.34	1.53
3	E	301	GUO	C24-N22	6.71	1.49	1.34
3	A	301	GUO	C24-N22	6.07	1.47	1.34
3	E	301	GUO	O14-C12	4.70	1.54	1.43
3	E	301	GUO	C27-N26	4.31	1.48	1.37
3	A	301	GUO	C27-N26	4.27	1.48	1.37
3	E	301	GUO	C16-C20	4.07	1.66	1.53
3	A	301	GUO	O14-C12	4.05	1.53	1.43
3	A	301	GUO	C16-C20	3.92	1.65	1.53
3	A	301	GUO	C6-C9	-3.51	1.41	1.51
3	A	301	GUO	O47-C45	3.46	1.51	1.43
3	A	301	GUO	O11-C9	3.45	1.52	1.45
3	E	301	GUO	O11-C9	3.18	1.52	1.45
3	E	301	GUO	O47-C45	3.17	1.50	1.43
3	E	301	GUO	C6-C9	-2.86	1.43	1.51
3	E	301	GUO	C20-N22	2.67	1.46	1.43
3	A	301	GUO	C12-C9	2.56	1.59	1.53
3	E	301	GUO	C12-C9	2.34	1.58	1.53
3	E	301	GUO	C28-C27	-2.32	1.37	1.43
3	E	301	GUO	O30-C29	-2.30	1.19	1.24
3	A	301	GUO	O43-C41	-2.27	1.37	1.43
3	E	301	GUO	O43-C41	-2.23	1.37	1.43
3	A	301	GUO	O18-C16	2.22	1.48	1.43
4	B	301	GLN	OXT-C	-2.21	1.23	1.30
4	D	301	GLN	OXT-C	-2.19	1.23	1.30
3	A	301	GUO	C28-C27	-2.14	1.37	1.43
3	E	301	GUO	P55-O54	2.10	1.66	1.60
3	A	301	GUO	O30-C29	-2.06	1.20	1.24

All (20) bond angle outliers are listed below:

Mol	Chain	Res	Type	Atoms	Z	Observed(°)	Ideal(°)
3	E	301	GUO	C27-N26-C24	6.80	123.98	116.96
3	A	301	GUO	C27-N26-C24	5.09	122.21	116.96

Continued on next page...

Continued from previous page...

Mol	Chain	Res	Type	Atoms	Z	Observed(°)	Ideal(°)
3	A	301	GUO	C28-C29-N31	4.48	123.51	116.28
3	A	301	GUO	C16-C20-N22	-4.36	106.42	112.11
3	A	301	GUO	C35-N34-C28	3.78	108.99	102.55
3	E	301	GUO	O40-C38-N37	-3.59	103.99	108.75
3	A	301	GUO	C49-O40-C38	-3.57	106.66	109.92
3	E	301	GUO	O11-C20-N22	-3.37	106.49	110.27
3	E	301	GUO	C35-N34-C28	3.19	107.98	102.55
3	A	301	GUO	O30-C29-N31	-3.08	118.16	122.62
3	E	301	GUO	O11-C20-C16	-2.96	103.21	106.29
3	E	301	GUO	C49-O40-C38	-2.88	107.29	109.92
4	B	301	GLN	OXT-C-O	-2.83	117.66	124.08
3	E	301	GUO	C41-C45-C49	2.73	107.89	102.61
3	E	301	GUO	O3P-P1-O5P	2.43	113.02	106.67
3	E	301	GUO	N22-C24-N26	2.31	125.63	122.23
3	E	301	GUO	C16-C20-N22	2.27	115.08	112.11
4	D	301	GLN	OXT-C-O	-2.20	119.10	124.08
4	F	301	GLN	OXT-C-O	-2.13	119.25	124.08
3	E	301	GUO	O11-C9-C6	2.12	116.12	109.33

There are no chirality outliers.

All (11) torsion outliers are listed below:

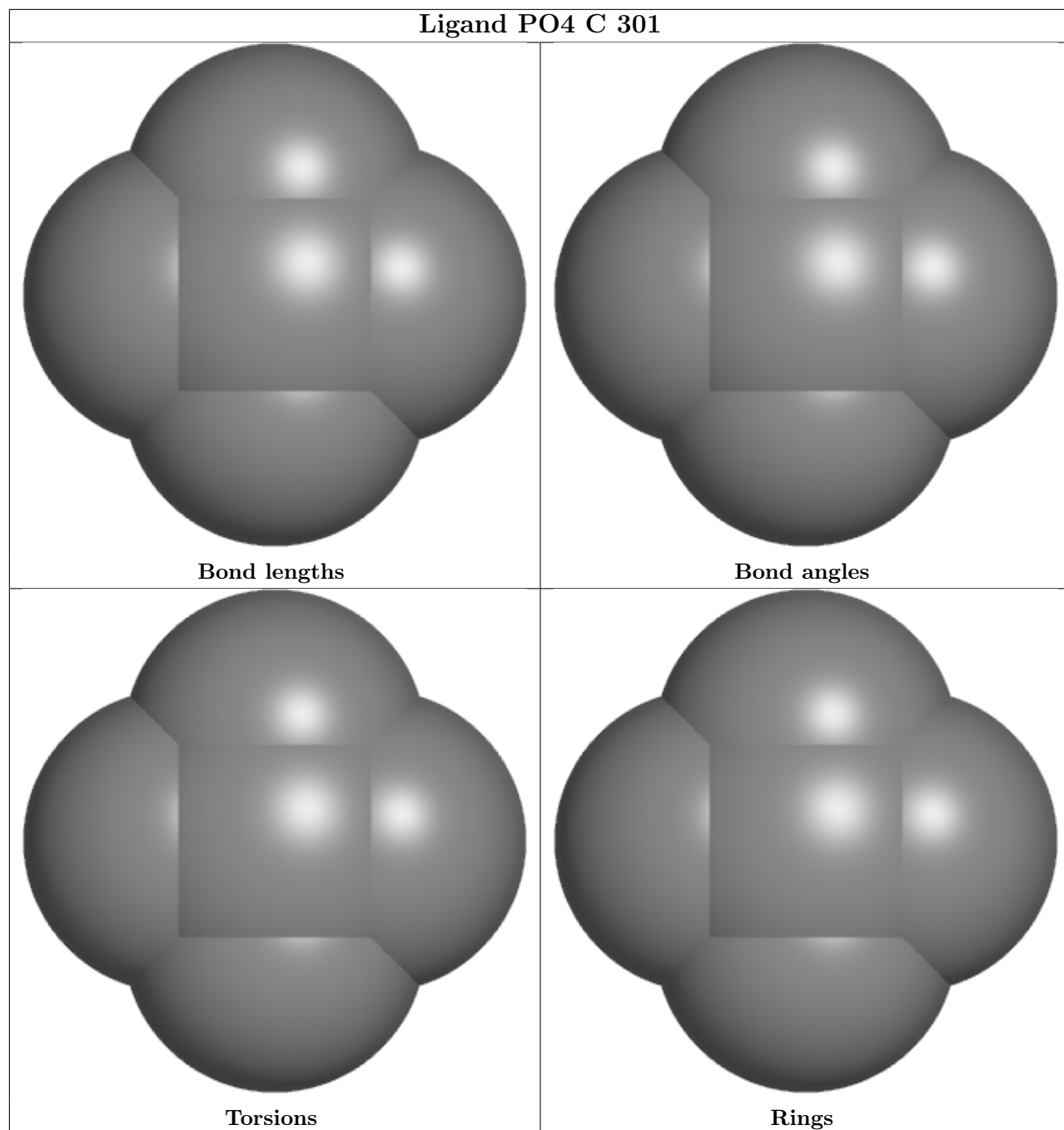
Mol	Chain	Res	Type	Atoms
3	E	301	GUO	C6-O5P-P1-O2P
3	E	301	GUO	C6-O5P-P1-O3P
3	E	301	GUO	C6-O5P-P1-O4P
3	E	301	GUO	O5P-C6-C9-O11
3	E	301	GUO	O5P-C6-C9-C12
3	A	301	GUO	C45-C49-C51-O54
3	A	301	GUO	O40-C49-C51-O54
3	E	301	GUO	O40-C49-C51-O54
4	B	301	GLN	C-CA-CB-CG
4	D	301	GLN	C-CA-CB-CG
3	E	301	GUO	C45-C49-C51-O54

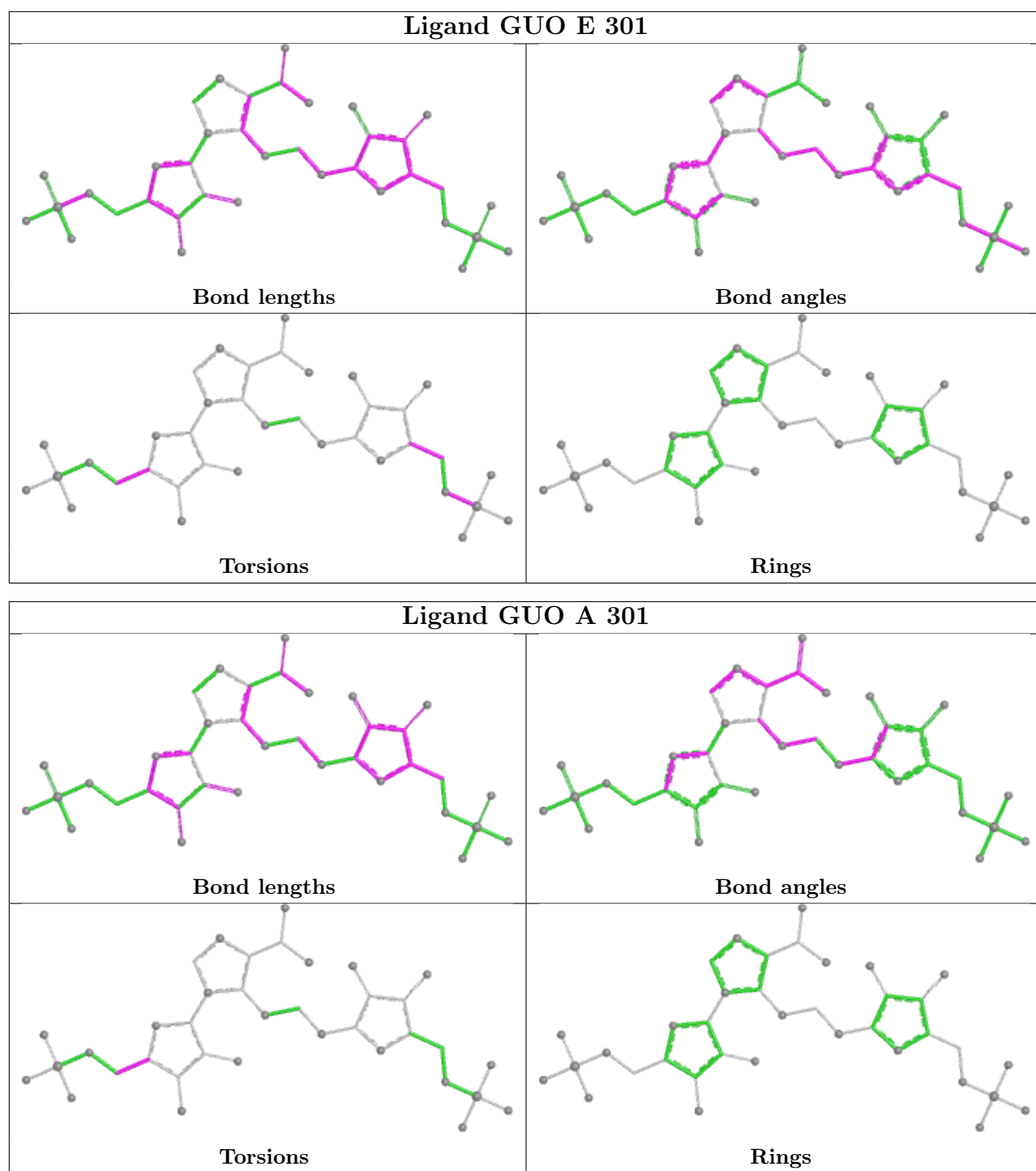
There are no ring outliers.

2 monomers are involved in 7 short contacts:

Mol	Chain	Res	Type	Clashes	Symm-Clashes
3	E	301	GUO	3	0
3	A	301	GUO	4	0

The following is a two-dimensional graphical depiction of Mogul quality analysis of bond lengths, bond angles, torsion angles, and ring geometry for all instances of the Ligand of Interest. In addition, ligands with molecular weight > 250 and outliers as shown on the validation Tables will also be included. For torsion angles, if less than 5% of the Mogul distribution of torsion angles is within 10 degrees of the torsion angle in question, then that torsion angle is considered an outlier. Any bond that is central to one or more torsion angles identified as an outlier by Mogul will be highlighted in the graph. For rings, the root-mean-square deviation (RMSD) between the ring in question and similar rings identified by Mogul is calculated over all ring torsion angles. If the average RMSD is greater than 60 degrees and the minimal RMSD between the ring in question and any Mogul-identified rings is also greater than 60 degrees, then that ring is considered an outlier. The outliers are highlighted in purple. The color gray indicates Mogul did not find sufficient equivalents in the CSD to analyse the geometry.





5.7 Other polymers [i](#)

There are no such residues in this entry.

5.8 Polymer linkage issues [i](#)

There are no chain breaks in this entry.

6 Fit of model and data [i](#)

6.1 Protein, DNA and RNA chains [i](#)

In the following table, the column labelled ‘#RSRZ> 2’ contains the number (and percentage) of RSRZ outliers, followed by percent RSRZ outliers for the chain as percentile scores relative to all X-ray entries and entries of similar resolution. The OWAB column contains the minimum, median, 95th percentile and maximum values of the occupancy-weighted average B-factor per residue. The column labelled ‘Q< 0.9’ lists the number of (and percentage) of residues with an average occupancy less than 0.9.

Mol	Chain	Analysed	<RSRZ>	#RSRZ>2	OWAB(Å ²)	Q<0.9
1	A	252/253 (99%)	-0.09	11 (4%) 34 35	34, 50, 92, 152	0
1	C	252/253 (99%)	-0.55	0 100 100	25, 39, 63, 75	0
1	E	251/253 (99%)	-0.44	1 (0%) 92 93	28, 43, 68, 97	0
2	B	202/203 (99%)	-0.57	0 100 100	35, 48, 72, 89	0
2	D	201/203 (99%)	-0.62	2 (0%) 82 83	28, 38, 56, 106	0
2	F	198/203 (97%)	-0.37	0 100 100	32, 51, 89, 117	0
All	All	1356/1368 (99%)	-0.43	14 (1%) 82 83	25, 45, 76, 152	0

All (14) RSRZ outliers are listed below:

Mol	Chain	Res	Type	RSRZ
1	A	21	THR	7.8
1	A	26	LEU	5.8
1	A	20	GLY	5.0
1	A	24	GLU	4.9
1	A	23	PHE	4.6
2	D	199	SER	3.3
1	A	29	SER	3.1
1	A	25	ASN	3.0
1	E	95	ARG	3.0
1	A	19	LYS	2.7
1	A	229	PHE	2.6
2	D	-1	MET	2.5
1	A	22	ASN	2.5
1	A	27	ARG	2.2

6.2 Non-standard residues in protein, DNA, RNA chains [i](#)

There are no non-standard protein/DNA/RNA residues in this entry.

6.3 Carbohydrates [i](#)

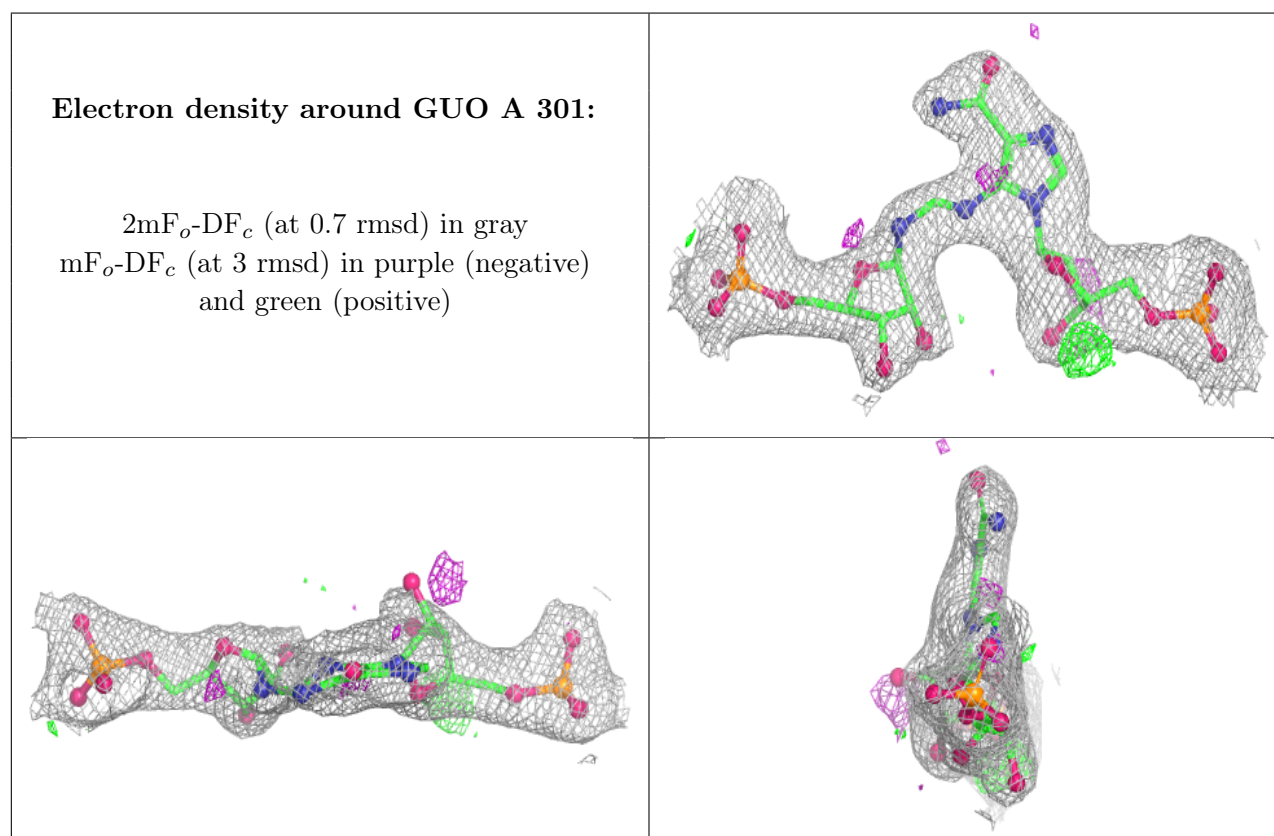
There are no monosaccharides in this entry.

6.4 Ligands [i](#)

In the following table, the Atoms column lists the number of modelled atoms in the group and the number defined in the chemical component dictionary. The B-factors column lists the minimum, median, 95th percentile and maximum values of B factors of atoms in the group. The column labelled 'Q< 0.9' lists the number of atoms with occupancy less than 0.9.

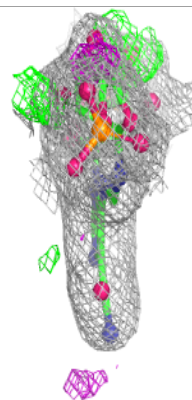
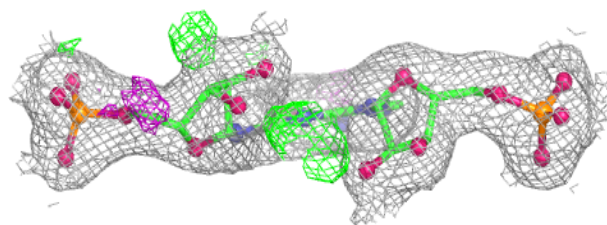
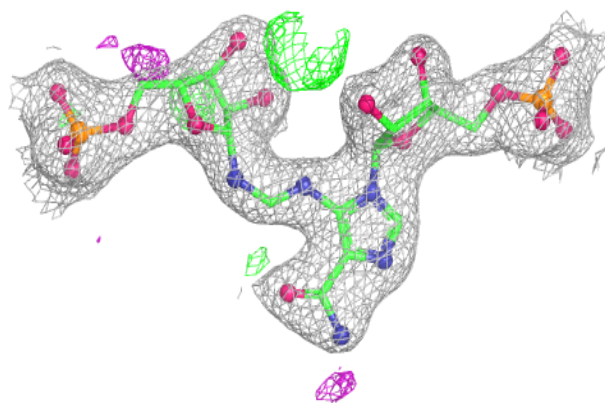
Mol	Type	Chain	Res	Atoms	RSCC	RSR	B-factors(\AA^2)	Q<0.9
4	GLN	D	301	10/10	0.95	0.11	32,35,48,50	0
4	GLN	B	301	10/10	0.96	0.10	43,47,58,64	0
3	GUO	A	301	37/37	0.96	0.11	48,59,79,86	0
4	GLN	F	301	10/10	0.97	0.10	33,36,40,40	0
3	GUO	E	301	37/37	0.98	0.11	31,46,54,55	0
5	PO4	C	301	5/5	0.98	0.11	40,48,60,61	0

The following is a graphical depiction of the model fit to experimental electron density of all instances of the Ligand of Interest. In addition, ligands with molecular weight > 250 and outliers as shown on the geometry validation Tables will also be included. Each fit is shown from different orientation to approximate a three-dimensional view.



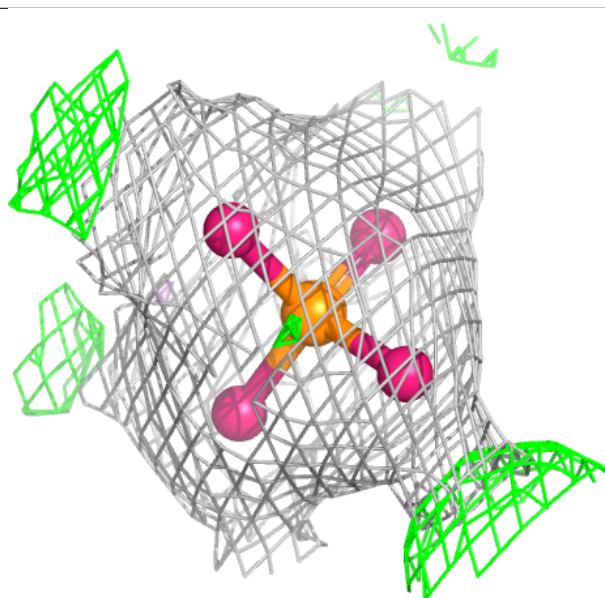
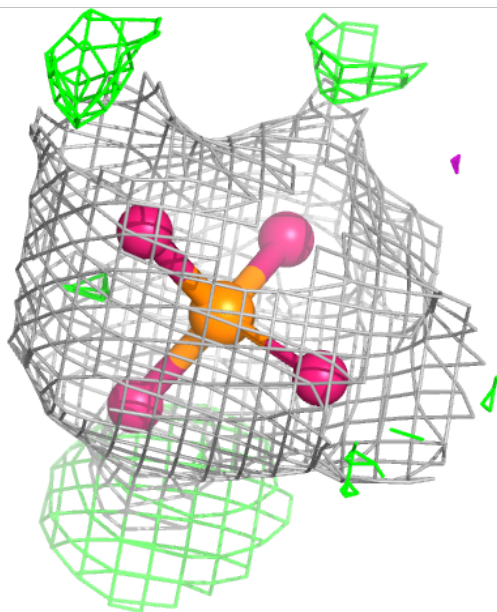
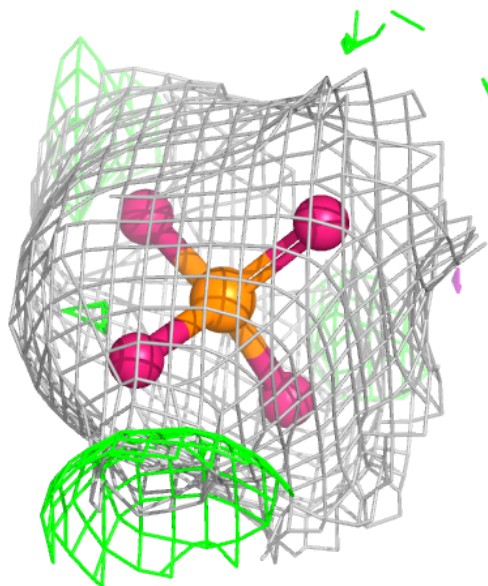
Electron density around GUO E 301:

$2mF_o-DF_c$ (at 0.7 rmsd) in gray
 mF_o-DF_c (at 3 rmsd) in purple (negative)
and green (positive)



Electron density around PO4 C 301:

$2mF_o-DF_c$ (at 0.7 rmsd) in gray
 mF_o-DF_c (at 3 rmsd) in purple (negative)
and green (positive)



6.5 Other polymers ⓘ

There are no such residues in this entry.