



Full wwPDB X-ray Structure Validation Report ⓘ

Mar 19, 2025 – 11:04 AM EDT

PDB ID : 3A9Z
Title : Crystal structure of ras selenocysteine lyase in complex with selenopropionate
Authors : Omi, R.; Hirotsu, K.
Deposited on : 2009-11-09
Resolution : 1.55 Å(reported)

This is a Full wwPDB X-ray Structure Validation Report for a publicly released PDB entry.

We welcome your comments at validation@mail.wwpdb.org

A user guide is available at

<https://www.wwpdb.org/validation/2017/XrayValidationReportHelp>

with specific help available everywhere you see the ⓘ symbol.

The types of validation reports are described at

<http://www.wwpdb.org/validation/2017/FAQs#types>.

The following versions of software and data (see [references ⓘ](#)) were used in the production of this report:

MolProbity : 4.02b-467
Mogul : 2022.3.0, CSD as543be (2022)
Xtriage (Phenix) : 1.21
EDS : 3.0
Percentile statistics : 20231227.v01 (using entries in the PDB archive December 27th 2023)
CCP4 : 9.0.004 (Gargrove)
Density-Fitness : 1.0.11
Ideal geometry (proteins) : Engh & Huber (2001)
Ideal geometry (DNA, RNA) : Parkinson et al. (1996)
Validation Pipeline (wwPDB-VP) : 2.41.4

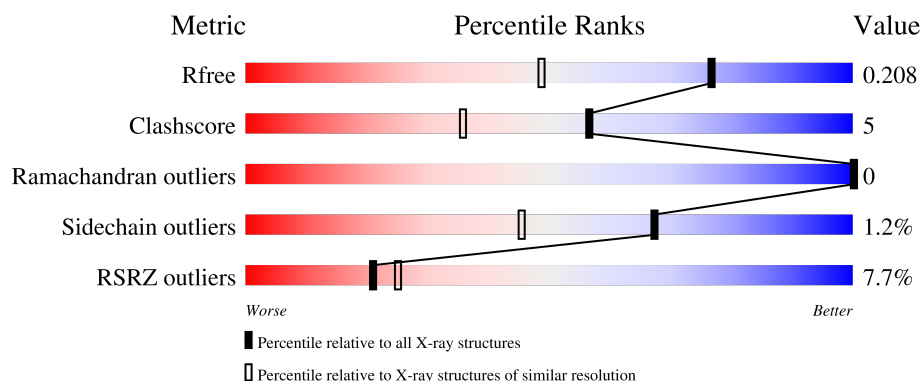
1 Overall quality at a glance

The following experimental techniques were used to determine the structure:

X-RAY DIFFRACTION



The reported resolution of this entry is 1.55 Å.

Percentile scores (ranging between 0-100) for global validation metrics of the entry are shown in the following graphic. The table shows the number of entries on which the scores are based.



Metric	Whole archive (#Entries)	Similar resolution (#Entries, resolution range(Å))
R_{free}	164625	1935 (1.56-1.56)
Clashscore	180529	2073 (1.56-1.56)
Ramachandran outliers	177936	2037 (1.56-1.56)
Sidechain outliers	177891	2034 (1.56-1.56)
RSRZ outliers	164620	1935 (1.56-1.56)

The table below summarises the geometric issues observed across the polymeric chains and their fit to the electron density. The red, orange, yellow and green segments of the lower bar indicate the fraction of residues that contain outliers for ≥ 3 , 2, 1 and 0 types of geometric quality criteria respectively. A grey segment represents the fraction of residues that are not modelled. The numeric value for each fraction is indicated below the corresponding segment, with a dot representing fractions $\leq 5\%$. The upper red bar (where present) indicates the fraction of residues that have poor fit to the electron density. The numeric value is given above the bar.

Mol	Chain	Length	Quality of chain
1	A	432	
1	B	432	

The following table lists non-polymeric compounds, carbohydrate monomers and non-standard residues in protein, DNA, RNA chains that are outliers for geometric or electron-density-fit criteria:

Mol	Type	Chain	Res	Chirality	Geometry	Clashes	Electron density
3	SLP	A	502[A]	-	X	-	-
3	SLP	A	502[B]	-	X	-	-
3	SLP	B	503[A]	-	X	-	-

2 Entry composition [i](#)

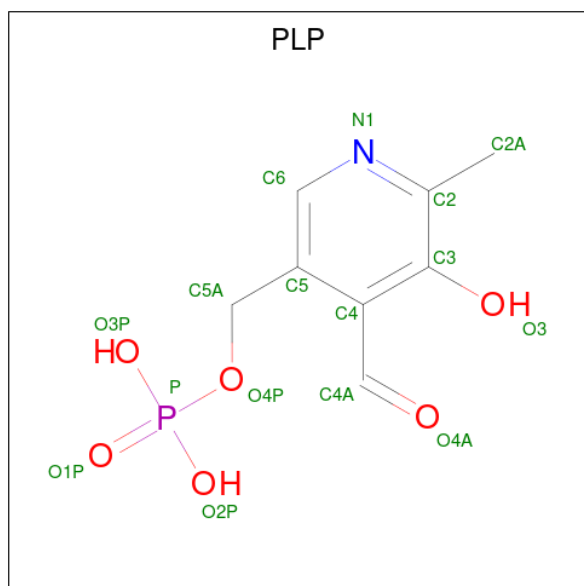
There are 5 unique types of molecules in this entry. The entry contains 6730 atoms, of which 0 are hydrogens and 0 are deuteriums.

In the tables below, the ZeroOcc column contains the number of atoms modelled with zero occupancy, the AltConf column contains the number of residues with at least one atom in alternate conformation and the Trace column contains the number of residues modelled with at most 2 atoms.

- Molecule 1 is a protein called Selenocysteine lyase.

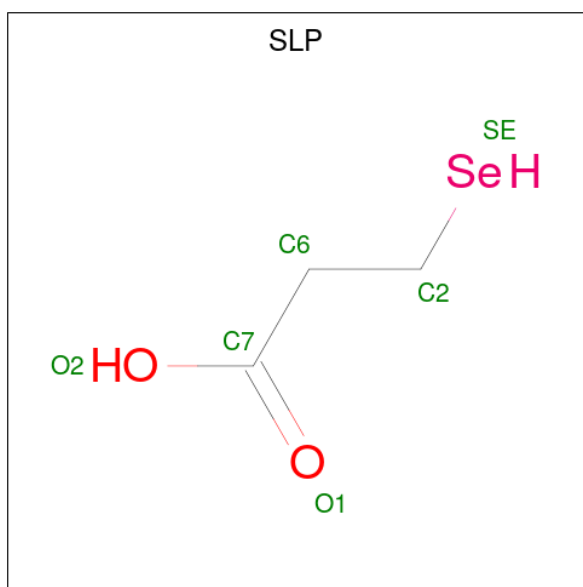
Mol	Chain	Residues	Atoms					ZeroOcc	AltConf	Trace
1	A	403	Total	C	N	O	S	0	0	0
			3087	1929	556	585	17			
1	B	399	Total	C	N	O	S	0	0	0
			3052	1908	550	577	17			

- Molecule 2 is PYRIDOXAL-5'-PHOSPHATE (three-letter code: PLP) (formula: C₈H₁₀NO₆P).



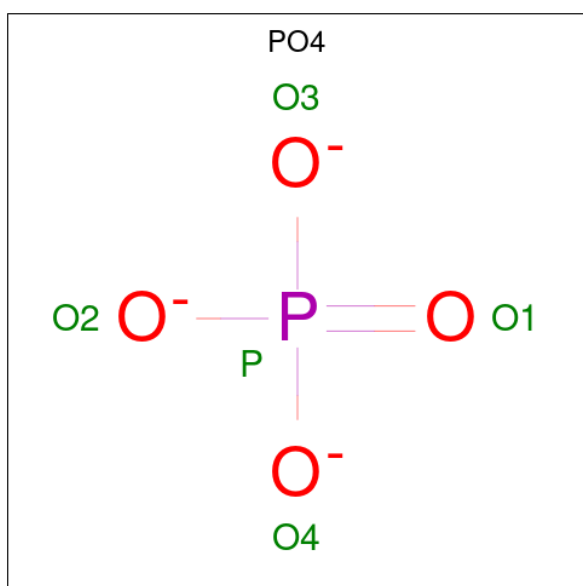
Mol	Chain	Residues	Atoms					ZeroOcc	AltConf
2	A	1	Total	C	N	O	P	0	0
			15	8	1	5	1		
2	B	1	Total	C	N	O	P	0	0
			15	8	1	5	1		

- Molecule 3 is 3-selanylpropanoic acid (three-letter code: SLP) (formula: C₃H₆O₂Se).



Mol	Chain	Residues	Atoms				ZeroOcc	AltConf
3	A	1	Total	C	O	Se	0	1
			12	6	4	2		
3	B	1	Total	C	O	Se	0	1
			12	6	4	2		

- Molecule 4 is PHOSPHATE ION (three-letter code: PO4) (formula: O_4P).



Mol	Chain	Residues	Atoms			ZeroOcc	AltConf
4	A	1	Total	O	P	0	0
			5	4	1		
4	A	1	Total	O	P	0	0
			5	4	1		

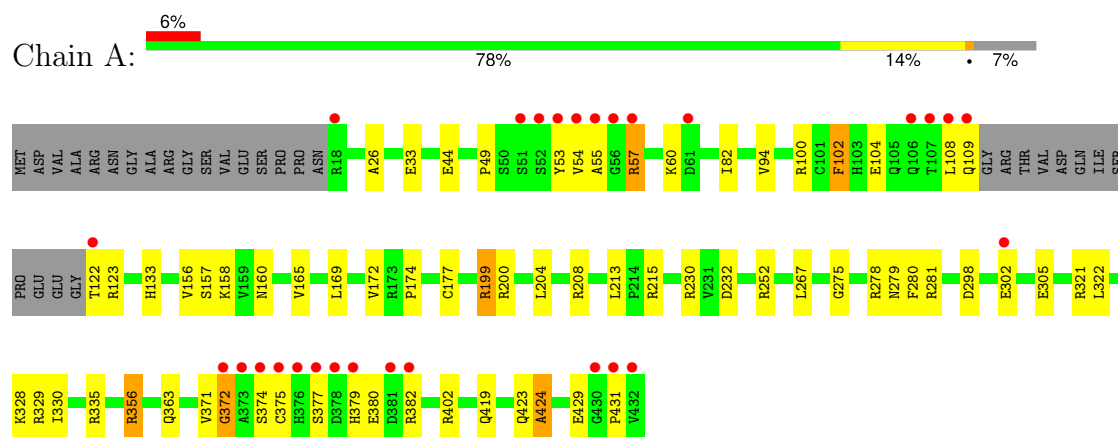
- Molecule 5 is water.

Mol	Chain	Residues	Atoms		ZeroOcc	AltConf
5	A	273	Total 273	O 273	0	0
5	B	254	Total 254	O 254	0	0

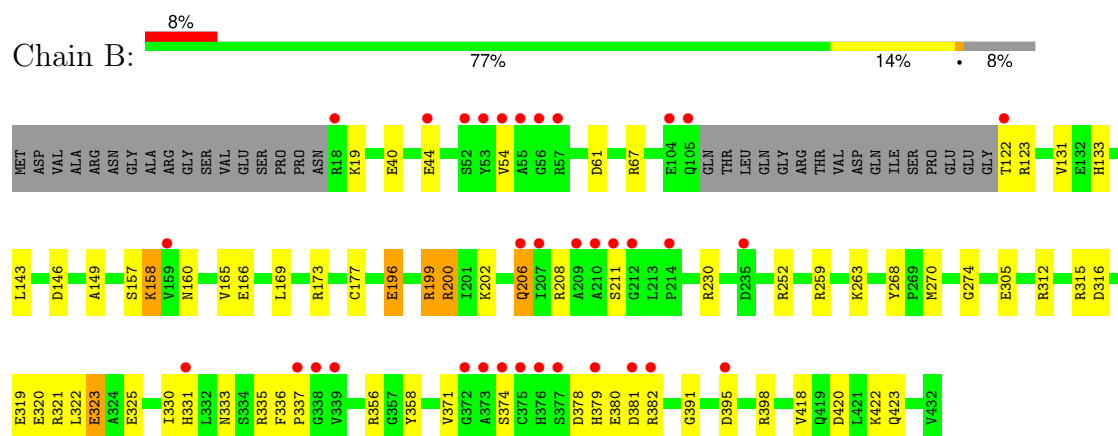
3 Residue-property plots [i](#)

These plots are drawn for all protein, RNA, DNA and oligosaccharide chains in the entry. The first graphic for a chain summarises the proportions of the various outlier classes displayed in the second graphic. The second graphic shows the sequence view annotated by issues in geometry and electron density. Residues are color-coded according to the number of geometric quality criteria for which they contain at least one outlier: green = 0, yellow = 1, orange = 2 and red = 3 or more. A red dot above a residue indicates a poor fit to the electron density ($RSRZ > 2$). Stretches of 2 or more consecutive residues without any outlier are shown as a green connector. Residues present in the sample, but not in the model, are shown in grey.

• Molecule 1: Selenocysteine lyase



• Molecule 1: Selenocysteine lyase



4 Data and refinement statistics

Property	Value	Source
Space group	P 21 21 21	Depositor
Cell constants a, b, c, α , β , γ	55.42Å 101.21Å 197.36Å 90.00° 90.00° 90.00°	Depositor
Resolution (Å)	19.99 – 1.55 19.99 – 1.55	Depositor EDS
% Data completeness (in resolution range)	98.6 (19.99-1.55) 98.7 (19.99-1.55)	Depositor EDS
R_{merge}	(Not available)	Depositor
R_{sym}	(Not available)	Depositor
$\langle I/\sigma(I) \rangle$ ¹	2.71 (at 1.55Å)	Xtriage
Refinement program	CNS 1.1	Depositor
R, R_{free}	0.187 , 0.209 0.186 , 0.208	Depositor DCC
R_{free} test set	15884 reflections (9.96%)	wwPDB-VP
Wilson B-factor (Å ²)	19.4	Xtriage
Anisotropy	0.155	Xtriage
Bulk solvent k_{sol} (e/Å ³), B_{sol} (Å ²)	0.42 , 42.3	EDS
L-test for twinning ²	$\langle L \rangle = 0.48$, $\langle L^2 \rangle = 0.31$	Xtriage
Estimated twinning fraction	No twinning to report.	Xtriage
F_o, F_c correlation	0.96	EDS
Total number of atoms	6730	wwPDB-VP
Average B, all atoms (Å ²)	23.0	wwPDB-VP

Xtriage's analysis on translational NCS is as follows: *The largest off-origin peak in the Patterson function is 3.80% of the height of the origin peak. No significant pseudotranslation is detected.*

¹Intensities estimated from amplitudes.

²Theoretical values of $\langle |L| \rangle$, $\langle L^2 \rangle$ for acentric reflections are 0.5, 0.333 respectively for untwinned datasets, and 0.375, 0.2 for perfectly twinned datasets.

5 Model quality

5.1 Standard geometry

Bond lengths and bond angles in the following residue types are not validated in this section: PLP, SLP, PO4

The Z score for a bond length (or angle) is the number of standard deviations the observed value is removed from the expected value. A bond length (or angle) with $|Z| > 5$ is considered an outlier worth inspection. RMSZ is the root-mean-square of all Z scores of the bond lengths (or angles).

Mol	Chain	Bond lengths		Bond angles	
		RMSZ	$\# Z > 5$	RMSZ	$\# Z > 5$
1	A	1.33	13/3139 (0.4%)	1.28	30/4259 (0.7%)
1	B	1.37	15/3104 (0.5%)	1.27	31/4213 (0.7%)
All	All	1.35	28/6243 (0.4%)	1.28	61/8472 (0.7%)

Chiral center outliers are detected by calculating the chiral volume of a chiral center and verifying if the center is modelled as a planar moiety or with the opposite hand. A planarity outlier is detected by checking planarity of atoms in a peptide group, atoms in a mainchain group or atoms of a sidechain that are expected to be planar.

Mol	Chain	#Chirality outliers	#Planarity outliers
1	B	0	1

All (28) bond length outliers are listed below:

Mol	Chain	Res	Type	Atoms	Z	Observed(Å)	Ideal(Å)
1	A	177	CYS	CB-SG	-13.38	1.59	1.82
1	B	305	GLU	CD-OE2	7.88	1.34	1.25
1	B	44	GLU	CD-OE1	7.86	1.34	1.25
1	A	302	GLU	CD-OE2	7.65	1.34	1.25
1	B	177	CYS	CB-SG	-7.62	1.69	1.82
1	A	33	GLU	CG-CD	7.39	1.63	1.51
1	B	44	GLU	CD-OE2	7.06	1.33	1.25
1	A	302	GLU	CD-OE1	7.04	1.33	1.25
1	B	263	LYS	CA-CB	-6.86	1.38	1.53
1	A	305	GLU	CD-OE1	6.82	1.33	1.25
1	B	166	GLU	CD-OE2	6.66	1.32	1.25
1	B	206	GLN	CG-CD	6.35	1.65	1.51
1	A	33	GLU	CD-OE1	6.16	1.32	1.25
1	A	158	LYS	CE-NZ	5.94	1.64	1.49
1	B	422	LYS	CD-CE	5.79	1.65	1.51
1	B	312	ARG	CZ-NH1	5.73	1.40	1.33

Continued on next page...

Continued from previous page...

Mol	Chain	Res	Type	Atoms	Z	Observed(Å)	Ideal(Å)
1	B	149	ALA	CA-CB	5.66	1.64	1.52
1	B	40	GLU	CD-OE1	5.63	1.31	1.25
1	A	156	VAL	CB-CG2	5.54	1.64	1.52
1	A	302	GLU	CG-CD	5.38	1.60	1.51
1	A	328	LYS	CD-CE	5.37	1.64	1.51
1	B	131	VAL	CB-CG2	5.28	1.64	1.52
1	B	202	LYS	CD-CE	5.21	1.64	1.51
1	B	320	GLU	CD-OE1	5.13	1.31	1.25
1	A	431	PRO	C-O	5.10	1.33	1.23
1	B	358	TYR	CE2-CZ	5.08	1.45	1.38
1	A	429	GLU	CB-CG	-5.06	1.42	1.52
1	A	424	ALA	CA-CB	5.01	1.62	1.52

All (61) bond angle outliers are listed below:

Mol	Chain	Res	Type	Atoms	Z	Observed(°)	Ideal(°)
1	B	398	ARG	NE-CZ-NH1	12.53	126.56	120.30
1	A	57	ARG	NE-CZ-NH2	-10.89	114.85	120.30
1	A	335	ARG	NE-CZ-NH1	10.62	125.61	120.30
1	A	335	ARG	NE-CZ-NH2	-10.54	115.03	120.30
1	B	398	ARG	NE-CZ-NH2	-9.53	115.54	120.30
1	B	321	ARG	NE-CZ-NH2	-8.94	115.83	120.30
1	A	329	ARG	NE-CZ-NH2	-8.30	116.15	120.30
1	B	196	GLU	OE1-CD-OE2	-8.23	113.43	123.30
1	B	199	ARG	NE-CZ-NH1	-7.80	116.40	120.30
1	A	57	ARG	NE-CZ-NH1	7.67	124.13	120.30
1	B	395	ASP	CB-CG-OD1	7.04	124.63	118.30
1	A	199	ARG	NE-CZ-NH1	7.00	123.80	120.30
1	A	230	ARG	NE-CZ-NH1	6.98	123.79	120.30
1	A	44	GLU	OE1-CD-OE2	-6.97	114.94	123.30
1	B	315	ARG	NE-CZ-NH2	-6.94	116.83	120.30
1	A	199	ARG	NE-CZ-NH2	-6.93	116.83	120.30
1	A	215	ARG	NE-CZ-NH2	-6.91	116.85	120.30
1	A	356	ARG	NE-CZ-NH1	6.89	123.74	120.30
1	B	395	ASP	CB-CG-OD2	-6.87	112.12	118.30
1	A	402	ARG	NE-CZ-NH1	-6.85	116.88	120.30
1	B	230	ARG	NE-CZ-NH1	6.82	123.71	120.30
1	B	422	LYS	CD-CE-NZ	6.77	127.28	111.70
1	A	371	VAL	C-N-CA	-6.50	108.64	122.30
1	B	67	ARG	NE-CZ-NH2	-6.49	117.06	120.30
1	A	252	ARG	NE-CZ-NH2	-6.38	117.11	120.30
1	B	199	ARG	NE-CZ-NH2	6.37	123.48	120.30

Continued on next page...

Continued from previous page...

Mol	Chain	Res	Type	Atoms	Z	Observed(°)	Ideal(°)
1	A	123	ARG	NE-CZ-NH2	-6.31	117.15	120.30
1	A	321	ARG	CG-CD-NE	-6.30	98.57	111.80
1	B	67	ARG	NE-CZ-NH1	6.29	123.45	120.30
1	B	252	ARG	NE-CZ-NH2	-6.24	117.18	120.30
1	B	123	ARG	NE-CZ-NH2	-6.22	117.19	120.30
1	B	378	ASP	CB-CG-OD2	-6.21	112.71	118.30
1	A	356	ARG	NE-CZ-NH2	-6.19	117.20	120.30
1	B	381	ASP	CB-CG-OD1	6.14	123.82	118.30
1	A	298	ASP	CB-CG-OD2	-6.13	112.78	118.30
1	B	270	MET	CG-SD-CE	-6.12	90.40	100.20
1	B	61	ASP	CB-CG-OD1	6.11	123.80	118.30
1	B	123	ARG	NE-CZ-NH1	5.98	123.29	120.30
1	B	259	ARG	NE-CZ-NH1	5.91	123.26	120.30
1	B	259	ARG	NE-CZ-NH2	-5.88	117.36	120.30
1	B	356	ARG	NE-CZ-NH2	-5.88	117.36	120.30
1	A	278	ARG	NE-CZ-NH2	-5.82	117.39	120.30
1	A	94	VAL	CG1-CB-CG2	-5.79	101.64	110.90
1	B	19	LYS	CD-CE-NZ	-5.72	98.53	111.70
1	A	200	ARG	NE-CZ-NH2	5.72	123.16	120.30
1	A	281	ARG	NE-CZ-NH2	-5.69	117.45	120.30
1	A	232	ASP	CB-CG-OD1	5.62	123.36	118.30
1	B	323	GLU	OE1-CD-OE2	-5.61	116.57	123.30
1	A	109	GLN	N-CA-C	-5.56	95.99	111.00
1	A	252	ARG	NE-CZ-NH1	5.56	123.08	120.30
1	B	173	ARG	NE-CZ-NH2	-5.51	117.55	120.30
1	A	158	LYS	CD-CE-NZ	5.39	124.10	111.70
1	A	102	PHE	CB-CG-CD2	-5.37	117.04	120.80
1	B	208	ARG	NE-CZ-NH1	-5.36	117.62	120.30
1	B	54	VAL	CG1-CB-CG2	5.33	119.42	110.90
1	B	316	ASP	CB-CG-OD1	5.29	123.06	118.30
1	A	199	ARG	CB-CG-CD	-5.27	97.90	111.60
1	A	230	ARG	NE-CZ-NH2	-5.25	117.67	120.30
1	B	274	GLY	N-CA-C	5.24	126.21	113.10
1	B	200	ARG	NE-CZ-NH1	-5.15	117.72	120.30
1	A	372	GLY	N-CA-C	-5.07	100.42	113.10

There are no chirality outliers.

All (1) planarity outliers are listed below:

Mol	Chain	Res	Type	Group
1	B	268	TYR	Sidechain

5.2 Too-close contacts ⓘ

In the following table, the Non-H and H(model) columns list the number of non-hydrogen atoms and hydrogen atoms in the chain respectively. The H(added) column lists the number of hydrogen atoms added and optimized by MolProbity. The Clashes column lists the number of clashes within the asymmetric unit, whereas Symm-Clashes lists symmetry-related clashes.

Mol	Chain	Non-H	H(model)	H(added)	Clashes	Symm-Clashes
1	A	3087	0	3096	34	0
1	B	3052	0	3060	21	0
2	A	15	0	6	2	0
2	B	15	0	6	2	0
3	A	12	0	4	2	0
3	B	12	0	4	2	0
4	A	10	0	0	0	0
5	A	273	0	0	4	0
5	B	254	0	0	0	0
All	All	6730	0	6176	56	0

The all-atom clashscore is defined as the number of clashes found per 1000 atoms (including hydrogen atoms). The all-atom clashscore for this structure is 5.

All (56) close contacts within the same asymmetric unit are listed below, sorted by their clash magnitude.

Atom-1	Atom-2	Interatomic distance (Å)	Clash overlap (Å)
2:A:501:PLP:C4A	3:A:502[A]:SLP:SE	2.28	1.30
2:B:501:PLP:C4A	3:B:503[A]:SLP:SE	2.50	1.09
1:A:379:HIS:HB3	1:A:382:ARG:HD2	1.52	0.88
1:A:102:PHE:HE2	1:A:122:THR:O	1.57	0.86
1:B:200:ARG:HG3	1:B:200:ARG:NH1	1.98	0.78
1:B:319:GLU:O	1:B:323:GLU:HG3	1.85	0.77
1:A:82:ILE:HD13	1:A:267:LEU:CD2	2.19	0.72
1:A:82:ILE:CD1	1:A:267:LEU:HD22	2.22	0.70
1:A:165:VAL:O	1:A:169:LEU:HD23	1.91	0.70
1:A:379:HIS:CD2	1:A:382:ARG:CZ	2.75	0.70
1:B:200:ARG:HG3	1:B:200:ARG:HH11	1.57	0.69
1:A:377:SER:O	1:A:380:GLU:HG3	1.95	0.67
1:B:200:ARG:HH11	1:B:200:ARG:CG	2.09	0.65
1:A:104:GLU:O	1:A:108:LEU:HG	2.00	0.61
1:A:372:GLY:HA3	5:A:667:HOH:O	2.00	0.60
1:B:157:SER:HB3	1:B:160:ASN:OD1	2.02	0.59
1:B:165:VAL:O	1:B:169:LEU:HD23	2.02	0.59
1:B:325:GLU:HG3	1:B:418:VAL:CG1	2.34	0.58

Continued on next page...

Continued from previous page...

Atom-1	Atom-2	Interatomic distance (Å)	Clash overlap (Å)
1:B:325:GLU:HG3	1:B:418:VAL:HG11	1.86	0.57
1:A:54:VAL:HG23	1:A:57:ARG:NH2	2.19	0.57
1:A:82:ILE:CD1	1:A:267:LEU:CD2	2.81	0.56
1:A:267:LEU:HD23	1:A:280:PHE:HB3	1.88	0.55
1:A:54:VAL:HG23	1:A:57:ARG:HH22	1.72	0.54
1:B:379:HIS:ND1	1:B:382:ARG:CZ	2.70	0.54
1:A:49:PRO:O	1:A:60:LYS:HE2	2.08	0.54
1:A:356:ARG:HD3	5:A:656:HOH:O	2.08	0.53
1:A:53:TYR:CE1	1:A:55:ALA:HB3	2.44	0.53
1:A:379:HIS:HD2	1:A:382:ARG:CZ	2.21	0.52
1:B:420:ASP:O	1:B:423:GLN:HG3	2.10	0.52
1:A:100:ARG:NH1	1:B:146:ASP:OD2	2.33	0.51
1:B:133:HIS:HE2	3:B:503[B]:SLP:SE	2.44	0.51
1:A:26:ALA:HB1	1:A:374:SER:OG	2.11	0.51
1:A:172:VAL:HG11	1:A:204:LEU:HD21	1.94	0.50
1:A:82:ILE:HD13	1:A:267:LEU:HD22	1.90	0.48
1:B:379:HIS:CE1	1:B:382:ARG:NH2	2.83	0.46
1:A:322:LEU:HB3	1:A:330:ILE:HD13	1.96	0.46
1:B:196:GLU:OE2	1:B:199:ARG:NH2	2.44	0.46
1:B:158:LYS:HD3	1:B:391:GLY:HA2	1.99	0.45
1:B:133:HIS:HB2	2:B:501:PLP:H2A3	2.00	0.44
1:B:371:VAL:HG21	1:B:380:GLU:HB3	1.98	0.44
1:A:157:SER:HB3	1:A:160:ASN:OD1	2.18	0.44
1:B:322:LEU:HB3	1:B:330:ILE:HD13	1.99	0.44
1:A:275:GLY:HA2	1:A:279:ASN:CG	2.39	0.43
1:A:208:ARG:HB3	1:A:213:LEU:HB2	2.00	0.42
1:A:133:HIS:HB2	2:A:501:PLP:H2A3	2.01	0.42
1:A:199:ARG:HG2	5:A:524:HOH:O	2.19	0.42
1:B:331:HIS:ND1	1:B:333:ASN:OD1	2.46	0.42
1:B:336:PHE:HB3	1:B:337:PRO:HD2	2.02	0.42
1:A:53:TYR:CD1	1:A:55:ALA:HB3	2.55	0.42
1:A:419:GLN:HG2	5:A:663:HOH:O	2.20	0.41
1:A:375:CYS:SG	3:A:502[B]:SLP:SE	3.29	0.41
1:A:275:GLY:HA2	1:A:279:ASN:ND2	2.36	0.41
1:A:53:TYR:HE1	1:A:55:ALA:HB3	1.87	0.41
1:A:102:PHE:CE2	1:A:122:THR:O	2.50	0.40
1:A:363:GLN:HB2	1:A:424:ALA:HB1	2.03	0.40
1:B:143:LEU:HD23	1:B:143:LEU:HA	1.89	0.40

There are no symmetry-related clashes.

5.3 Torsion angles

5.3.1 Protein backbone

In the following table, the Percentiles column shows the percent Ramachandran outliers of the chain as a percentile score with respect to all X-ray entries followed by that with respect to entries of similar resolution.

The Analysed column shows the number of residues for which the backbone conformation was analysed, and the total number of residues.

Mol	Chain	Analysed	Favoured	Allowed	Outliers	Percentiles	
1	A	399/432 (92%)	388 (97%)	11 (3%)	0	100	100
1	B	395/432 (91%)	384 (97%)	11 (3%)	0	100	100
All	All	794/864 (92%)	772 (97%)	22 (3%)	0	100	100

There are no Ramachandran outliers to report.

5.3.2 Protein sidechains

In the following table, the Percentiles column shows the percent sidechain outliers of the chain as a percentile score with respect to all X-ray entries followed by that with respect to entries of similar resolution.

The Analysed column shows the number of residues for which the sidechain conformation was analysed, and the total number of residues.

Mol	Chain	Analysed	Rotameric	Outliers	Percentiles	
1	A	337/364 (93%)	335 (99%)	2 (1%)	84	72
1	B	333/364 (92%)	327 (98%)	6 (2%)	54	27
All	All	670/728 (92%)	662 (99%)	8 (1%)	67	45

All (8) residues with a non-rotameric sidechain are listed below:

Mol	Chain	Res	Type
1	A	174	PRO
1	A	423	GLN
1	B	122	THR
1	B	158	LYS
1	B	206	GLN
1	B	211	SER
1	B	335	ARG
1	B	374	SER

Sometimes sidechains can be flipped to improve hydrogen bonding and reduce clashes. All (4) such sidechains are listed below:

Mol	Chain	Res	Type
1	A	363	GLN
1	A	365	GLN
1	A	376	HIS
1	A	379	HIS

5.3.3 RNA [i](#)

There are no RNA molecules in this entry.

5.4 Non-standard residues in protein, DNA, RNA chains [i](#)

There are no non-standard protein/DNA/RNA residues in this entry.

5.5 Carbohydrates [i](#)

There are no oligosaccharides in this entry.

5.6 Ligand geometry [i](#)

8 ligands are modelled in this entry.

In the following table, the Counts columns list the number of bonds (or angles) for which Mogul statistics could be retrieved, the number of bonds (or angles) that are observed in the model and the number of bonds (or angles) that are defined in the Chemical Component Dictionary. The Link column lists molecule types, if any, to which the group is linked. The Z score for a bond length (or angle) is the number of standard deviations the observed value is removed from the expected value. A bond length (or angle) with $|Z| > 2$ is considered an outlier worth inspection. RMSZ is the root-mean-square of all Z scores of the bond lengths (or angles).

Mol	Type	Chain	Res	Link	Bond lengths			Bond angles		
					Counts	RMSZ	$\# Z > 2$	Counts	RMSZ	$\# Z > 2$
3	SLP	B	503[B]	-	3,5,5	2.82	2 (66%)	5,5,5	1.55	1 (20%)
2	PLP	A	501	1	15,15,16	1.84	3 (20%)	21,22,23	1.55	5 (23%)
3	SLP	A	502[A]	-	3,5,5	2.53	2 (66%)	5,5,5	3.05	2 (40%)
4	PO4	A	504	-	4,4,4	1.87	2 (50%)	6,6,6	0.82	0
4	PO4	A	505	-	4,4,4	1.83	1 (25%)	6,6,6	0.63	0
2	PLP	B	501	1	15,15,16	1.39	3 (20%)	21,22,23	1.11	2 (9%)
3	SLP	A	502[B]	-	3,5,5	2.80	3 (100%)	5,5,5	1.54	1 (20%)

Mol	Type	Chain	Res	Link	Bond lengths			Bond angles		
					Counts	RMSZ	# Z > 2	Counts	RMSZ	# Z > 2
3	SLP	B	503[A]	-	3,5,5	2.67	2 (66%)	5,5,5	3.31	3 (60%)

In the following table, the Chirals column lists the number of chiral outliers, the number of chiral centers analysed, the number of these observed in the model and the number defined in the Chemical Component Dictionary. Similar counts are reported in the Torsion and Rings columns. '-' means no outliers of that kind were identified.

Mol	Type	Chain	Res	Link	Chirals	Torsions	Rings
3	SLP	B	503[B]	-	-	2/3/3/3	-
2	PLP	A	501	1	-	0/6/6/8	0/1/1/1
3	SLP	A	502[A]	-	-	2/3/3/3	-
2	PLP	B	501	1	-	0/6/6/8	0/1/1/1
3	SLP	A	502[B]	-	-	2/3/3/3	-
3	SLP	B	503[A]	-	-	2/3/3/3	-

All (18) bond length outliers are listed below:

Mol	Chain	Res	Type	Atoms	Z	Observed(Å)	Ideal(Å)
2	A	501	PLP	P-O1P	5.39	1.67	1.50
3	B	503[A]	SLP	O2-C7	-3.76	1.18	1.30
3	B	503[B]	SLP	O2-C7	-3.71	1.18	1.30
3	A	502[B]	SLP	O1-C7	3.33	1.33	1.22
3	A	502[A]	SLP	O1-C7	3.21	1.32	1.22
2	B	501	PLP	C3-C2	-3.16	1.37	1.41
4	A	505	PO4	P-O3	-2.64	1.46	1.54
3	A	502[B]	SLP	C6-C7	2.62	1.56	1.50
4	A	504	PO4	P-O3	-2.56	1.47	1.54
2	A	501	PLP	C2A-C2	2.54	1.54	1.50
3	B	503[B]	SLP	O1-C7	2.53	1.30	1.22
2	B	501	PLP	C2A-C2	2.50	1.54	1.50
3	A	502[B]	SLP	O2-C7	-2.36	1.23	1.30
4	A	504	PO4	P-O2	-2.36	1.47	1.54
3	B	503[A]	SLP	O1-C7	2.33	1.29	1.22
3	A	502[A]	SLP	O2-C7	-2.29	1.23	1.30
2	A	501	PLP	P-O4P	-2.18	1.53	1.60
2	B	501	PLP	P-O1P	2.01	1.56	1.50

All (14) bond angle outliers are listed below:

Mol	Chain	Res	Type	Atoms	Z	Observed(°)	Ideal(°)
3	B	503[A]	SLP	SE-C2-C6	-6.20	97.54	112.77

Continued on next page...

Continued from previous page...

Mol	Chain	Res	Type	Atoms	Z	Observed(°)	Ideal(°)
3	A	502[A]	SLP	SE-C2-C6	-6.12	97.72	112.77
2	A	501	PLP	O4P-C5A-C5	4.09	117.03	109.36
3	B	503[A]	SLP	O2-C7-C6	2.60	122.22	114.00
2	A	501	PLP	C4A-C4-C5	-2.60	118.26	120.94
3	B	503[B]	SLP	O2-C7-C6	2.55	122.04	114.00
2	B	501	PLP	O4P-C5A-C5	2.37	113.80	109.36
2	B	501	PLP	C5-C6-N1	-2.29	120.10	123.83
3	A	502[A]	SLP	O2-C7-C6	2.21	121.00	114.00
2	A	501	PLP	C6-C5-C4	2.20	119.90	118.10
3	B	503[A]	SLP	C2-C6-C7	-2.17	108.22	113.28
2	A	501	PLP	C5-C6-N1	-2.14	120.34	123.83
3	A	502[B]	SLP	O2-C7-C6	2.10	120.63	114.00
2	A	501	PLP	C2A-C2-C3	2.07	123.22	120.80

There are no chirality outliers.

All (8) torsion outliers are listed below:

Mol	Chain	Res	Type	Atoms
3	B	503[A]	SLP	C2-C6-C7-O1
3	B	503[B]	SLP	C2-C6-C7-O1
3	A	502[B]	SLP	C2-C6-C7-O1
3	B	503[A]	SLP	C2-C6-C7-O2
3	A	502[B]	SLP	C2-C6-C7-O2
3	B	503[B]	SLP	C2-C6-C7-O2
3	A	502[A]	SLP	C2-C6-C7-O2
3	A	502[A]	SLP	C2-C6-C7-O1

There are no ring outliers.

6 monomers are involved in 6 short contacts:

Mol	Chain	Res	Type	Clashes	Symm-Clashes
3	B	503[B]	SLP	1	0
2	A	501	PLP	2	0
3	A	502[A]	SLP	1	0
2	B	501	PLP	2	0
3	A	502[B]	SLP	1	0
3	B	503[A]	SLP	1	0

5.7 Other polymers ⓘ

There are no such residues in this entry.

5.8 Polymer linkage issues ⓘ

There are no chain breaks in this entry.

6 Fit of model and data

6.1 Protein, DNA and RNA chains

In the following table, the column labelled ‘#RSRZ> 2’ contains the number (and percentage) of RSRZ outliers, followed by percent RSRZ outliers for the chain as percentile scores relative to all X-ray entries and entries of similar resolution. The OWAB column contains the minimum, median, 95th percentile and maximum values of the occupancy-weighted average B-factor per residue. The column labelled ‘Q< 0.9’ lists the number of (and percentage) of residues with an average occupancy less than 0.9.

Mol	Chain	Analysed	<RSRZ>	#RSRZ>2	OWAB(Å ²)	Q<0.9
1	A	403/432 (93%)	0.19	28 (6%) 24 29	13, 19, 36, 48	0
1	B	399/432 (92%)	0.37	34 (8%) 18 21	14, 22, 37, 46	0
All	All	802/864 (92%)	0.28	62 (7%) 21 25	13, 20, 37, 48	0

All (62) RSRZ outliers are listed below:

Mol	Chain	Res	Type	RSRZ
1	A	432	VAL	8.2
1	A	373	ALA	7.7
1	A	56	GLY	6.6
1	B	54	VAL	5.4
1	A	122	THR	5.3
1	A	379	HIS	5.2
1	B	373	ALA	5.1
1	A	431	PRO	5.0
1	A	374	SER	4.9
1	A	375	CYS	4.9
1	B	56	GLY	4.6
1	A	381	ASP	4.4
1	A	108	LEU	4.4
1	B	375	CYS	4.3
1	A	52	SER	4.3
1	A	377	SER	4.1
1	B	379	HIS	3.9
1	B	210	ALA	3.9
1	B	105	GLN	3.8
1	B	209	ALA	3.6
1	B	376	HIS	3.6
1	A	18	ARG	3.6
1	B	377	SER	3.6
1	A	376	HIS	3.6

Continued on next page...

Continued from previous page...

Mol	Chain	Res	Type	RSRZ
1	A	53	TYR	3.5
1	B	337	PRO	3.5
1	A	372	GLY	3.4
1	B	382	ARG	3.4
1	B	372	GLY	3.3
1	A	57	ARG	3.3
1	A	378	ASP	3.1
1	B	207	ILE	2.9
1	B	159	VAL	2.9
1	B	57	ARG	2.9
1	A	54	VAL	2.8
1	B	122	THR	2.8
1	B	331	HIS	2.8
1	A	55	ALA	2.8
1	A	106	GLN	2.7
1	A	382	ARG	2.7
1	B	374	SER	2.6
1	B	55	ALA	2.6
1	A	61	ASP	2.6
1	B	395	ASP	2.6
1	B	18	ARG	2.6
1	B	235	ASP	2.5
1	B	104	GLU	2.5
1	B	338	GLY	2.5
1	B	44	GLU	2.5
1	A	109	GLN	2.4
1	B	206	GLN	2.4
1	B	214	PRO	2.3
1	B	53	TYR	2.2
1	A	302	GLU	2.2
1	B	212	GLY	2.2
1	A	51	SER	2.2
1	A	430	GLY	2.1
1	B	52	SER	2.1
1	B	381	ASP	2.0
1	B	339	VAL	2.0
1	A	107	THR	2.0
1	B	211	SER	2.0

6.2 Non-standard residues in protein, DNA, RNA chains ⓘ

There are no non-standard protein/DNA/RNA residues in this entry.

6.3 Carbohydrates [i](#)

There are no monosaccharides in this entry.

6.4 Ligands [i](#)

In the following table, the Atoms column lists the number of modelled atoms in the group and the number defined in the chemical component dictionary. The B-factors column lists the minimum, median, 95th percentile and maximum values of B factors of atoms in the group. The column labelled 'Q< 0.9' lists the number of atoms with occupancy less than 0.9.

Mol	Type	Chain	Res	Atoms	RSCC	RSR	B-factors(Å ²)	Q<0.9
4	PO4	A	505	5/5	0.89	0.11	36,38,40,40	0
4	PO4	A	504	5/5	0.94	0.10	29,29,30,31	0
3	SLP	B	503[A]	6/6	0.96	0.15	19,23,24,25	6
3	SLP	B	503[B]	6/6	0.96	0.15	9,18,19,20	6
2	PLP	A	501	15/16	0.98	0.05	13,15,17,18	0
2	PLP	B	501	15/16	0.98	0.05	16,18,19,21	0
3	SLP	A	502[A]	6/6	0.98	0.13	13,20,21,21	6
3	SLP	A	502[B]	6/6	0.98	0.13	10,18,19,20	6

6.5 Other polymers [i](#)

There are no such residues in this entry.