



wwPDB EM Validation Summary Report ⓘ

Dec 6, 2023 – 08:10 PM JST

EMDB ID : EMD-32071
Title : A tomogram of medusaviruses outside the host cell by cryo-electron tomography
Authors : Murata, K.; Song, C.; Watanabe, R.
Deposited on : 2021-10-18
Resolution : Not provided

This is a wwPDB EM Validation Summary Report for a publicly released PDB entry.

We welcome your comments at validation@mail.wwpdb.org

A user guide is available at

<https://www.wwpdb.org/validation/2017/EMTomogramValidationReportHelp>

with specific help available everywhere you see the ⓘ symbol.

The types of validation reports are described at

<http://www.wwpdb.org/validation/2017/FAQs#types>.

The following versions of software and data (see [references ⓘ](#)) were used in the production of this report:

EMDB validation analysis : 0.0.1.dev70
Validation Pipeline (wwPDB-VP) : 2.36

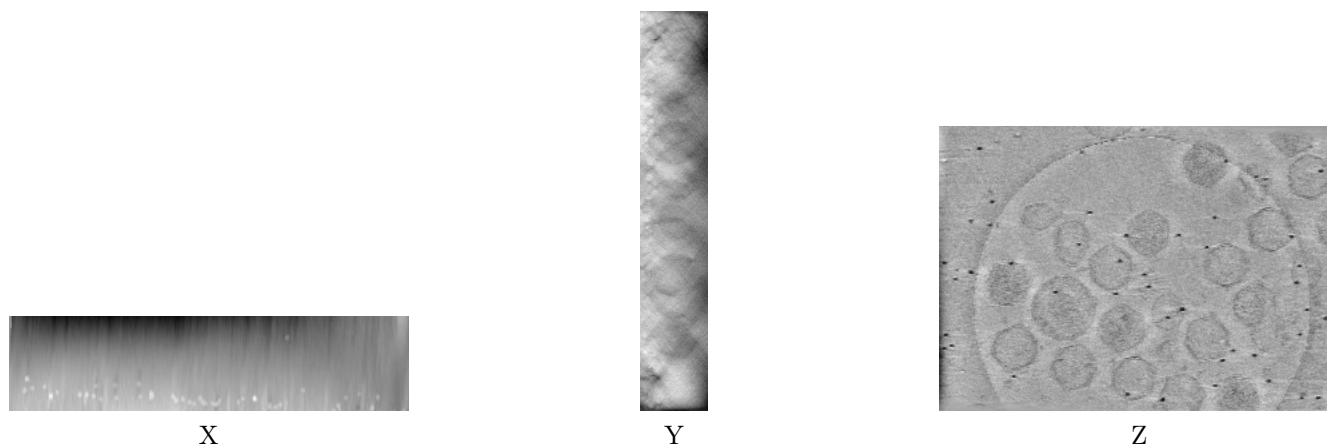
1 Experimental information

Property	Value	Source
EM reconstruction method	TOMOGRAPHY	Depositor
Imposed symmetry	Not Provided	
Number of tilted images used	60	Depositor
Resolution determination method	Not provided	
CTF correction method	Not provided	
Microscope	JEOL CRYO ARM 300	Depositor
Voltage (kV)	300	Depositor
Electron dose ($e^-/\text{\AA}^2$)	100.0	Depositor
Minimum defocus (nm)	Not provided	
Maximum defocus (nm)	Not provided	
Magnification	15000.0	Depositor
Image detector	GATAN K3 (6k x 4k)	Depositor
Maximum voxel value	127.000	Depositor
Minimum voxel value	-128.000	Depositor
Average voxel value	40.339	Depositor
Voxel value standard deviation	15.591	Depositor
Recommended contour level	Not applicable	
Tomogram size (\AA)	18760.32, 13340.672, 3126.72	wwPDB
Tomogram dimensions	1440, 1024, 240	wwPDB
Tomogram angles ($^\circ$)	90.0, 90.0, 90.0	wwPDB
Grid spacing (\AA)	13.028, 13.028, 13.028	Depositor

2 Tomogram visualisation [i](#)

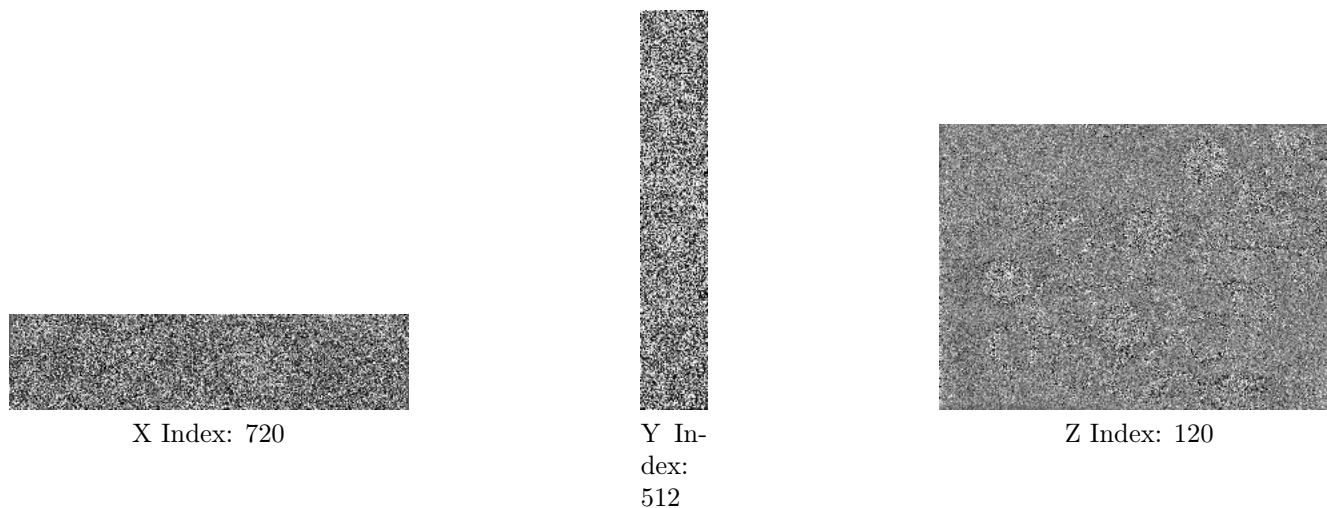
This section contains visualisations of the EMDB entry EMD-32071. These allow visual inspection of the internal detail of the tomogram and identification of artifacts.

2.1 Orthogonal projections [i](#)



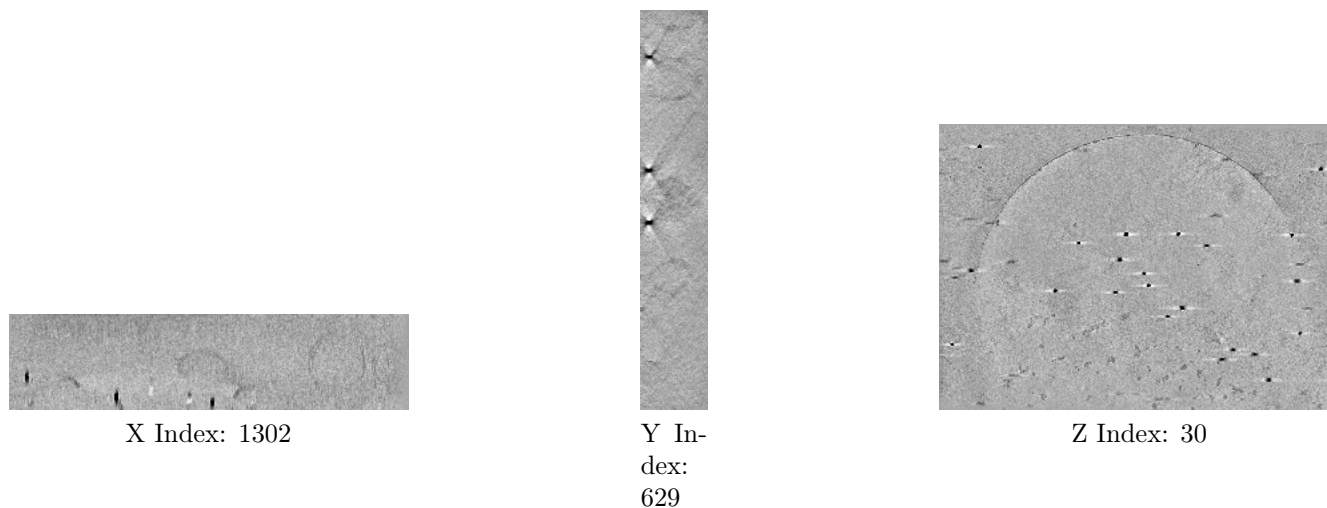
The images above show the tomogram projected in three orthogonal directions.

2.2 Central slices [i](#)



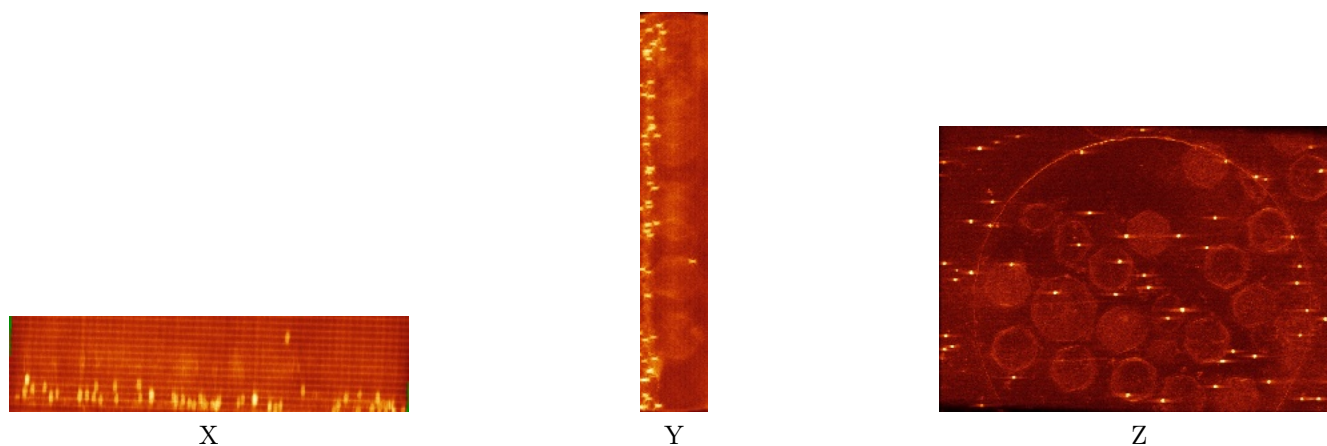
The images above show central slices of the tomogram in three orthogonal directions.

2.3 Largest variance slices [i](#)



The images above show the largest variance slices of the tomogram in three orthogonal directions.

2.4 Orthogonal standard-deviation projections (False-color) [i](#)



The images above show the tomogram projected in three orthogonal directions.

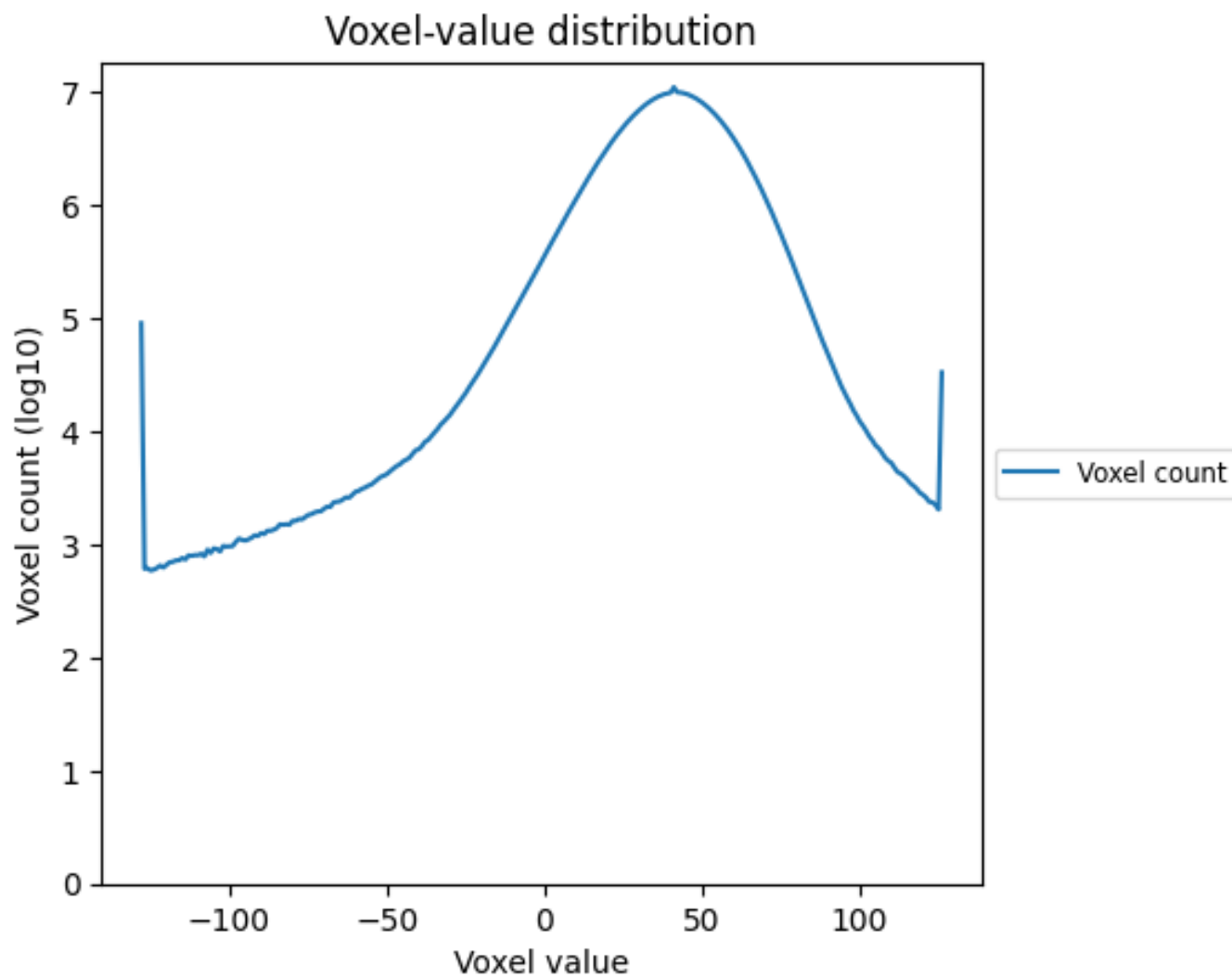
2.5 Mask visualisation [i](#)

This section was not generated. No masks/segmentation were deposited.

3 Tomogram analysis [i](#)

This section contains the results of statistical analysis of the tomogram.

3.1 Voxel-value distribution [i](#)



The voxel-value distribution is plotted in 128 intervals along the x-axis. The y-axis is logarithmic.