



wwPDB EM Validation Summary Report ⓘ

Jan 22, 2024 – 02:05 PM EST

EMDB ID : EMD-28753
Title : Cryo-electron tomography of S42Y a-synuclein preformed fibrils
Authors : Jiang, J.; Boparai, N.; Dai, W.; Kim, Y.S.
Deposited on : 2022-11-01
Resolution : Not provided

This is a wwPDB EM Validation Summary Report for a publicly released PDB entry.

We welcome your comments at validation@mail.wwpdb.org

A user guide is available at

<https://www.wwpdb.org/validation/2017/EMTomogramValidationReportHelp>
with specific help available everywhere you see the ⓘ symbol.

The types of validation reports are described at

<http://www.wwpdb.org/validation/2017/FAQs#types>.

The following versions of software and data (see [references ⓘ](#)) were used in the production of this report:

EMDB validation analysis : 0.0.1.dev70
Validation Pipeline (wwPDB-VP) : 2.36

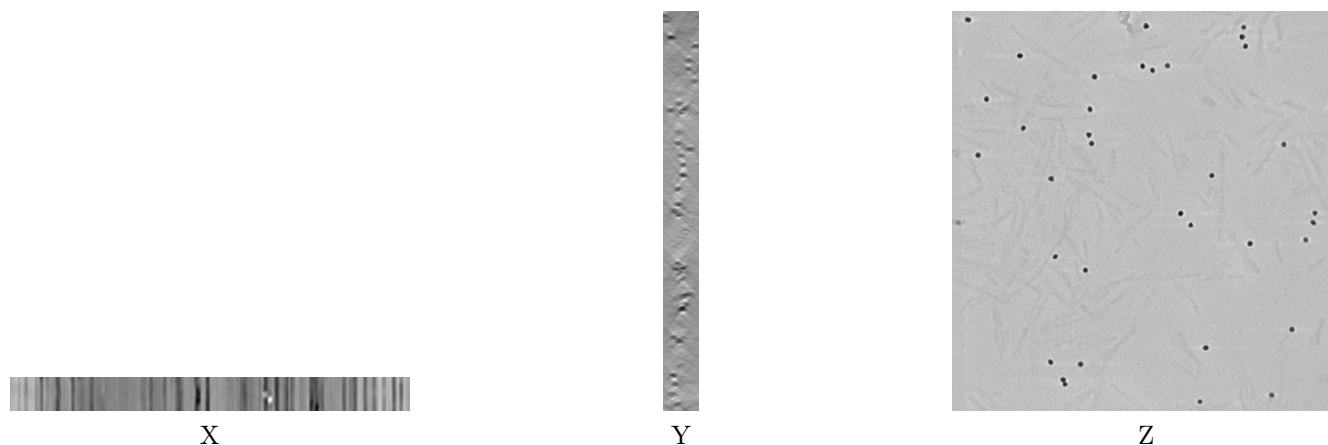
1 Experimental information ⓘ

| Property | Value | Source |
|--------------------------------------|-------------------------------|-----------|
| EM reconstruction method | TOMOGRAPHY | Depositor |
| Imposed symmetry | Not Provided | |
| Number of tilted images used | 41 | Depositor |
| Resolution determination method | Not provided | |
| CTF correction method | Not provided | |
| Microscope | FEI TALOS ARCTICA | Depositor |
| Voltage (kV) | 200 | Depositor |
| Electron dose ($e^-/\text{\AA}^2$) | 1.5 | Depositor |
| Minimum defocus (nm) | 3.5 | Depositor |
| Maximum defocus (nm) | 6.0 | Depositor |
| Magnification | 63000.0 | Depositor |
| Image detector | GATAN K2 SUMMIT (4k x 4k) | Depositor |
| Maximum voxel value | 52.964 | Depositor |
| Minimum voxel value | -72.763 | Depositor |
| Average voxel value | 0.019 | Depositor |
| Voxel value standard deviation | 1.589 | Depositor |
| Recommended contour level | Not applicable | |
| Tomogram size (Å) | 7614.1123, 7861.6562, 648.736 | wwPDB |
| Tomogram dimensions | 892, 921, 76 | wwPDB |
| Tomogram angles (°) | 90.0, 90.0, 90.0 | wwPDB |
| Grid spacing (Å) | 8.536, 8.536, 8.536 | Depositor |

2 Tomogram visualisation [i](#)

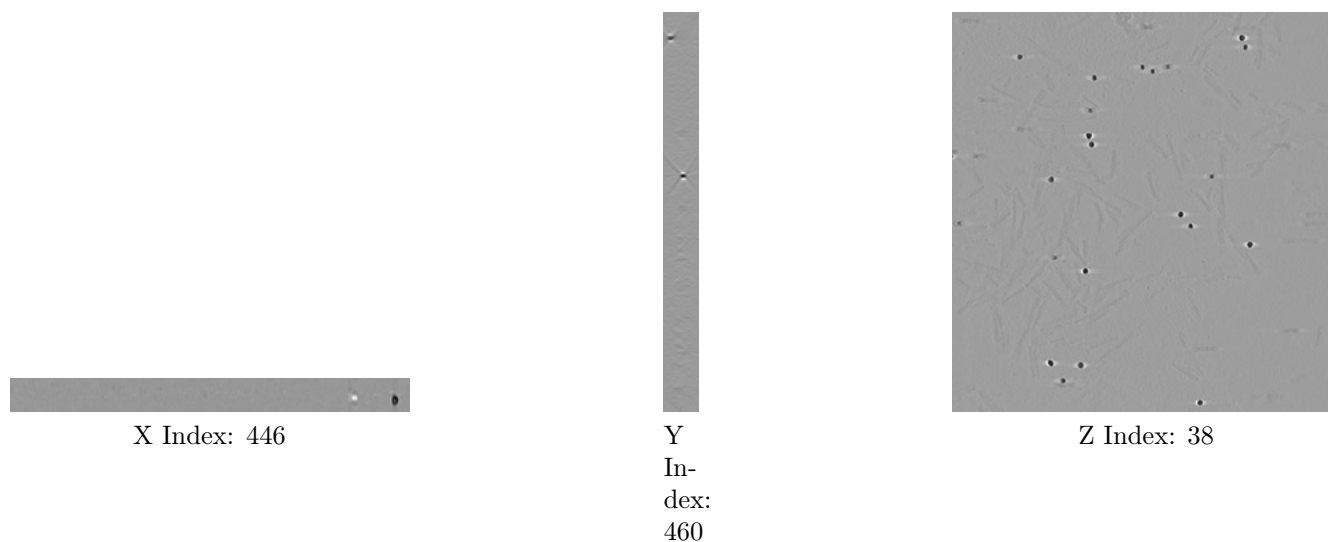
This section contains visualisations of the EMDB entry EMD-28753. These allow visual inspection of the internal detail of the tomogram and identification of artifacts.

2.1 Orthogonal projections [i](#)



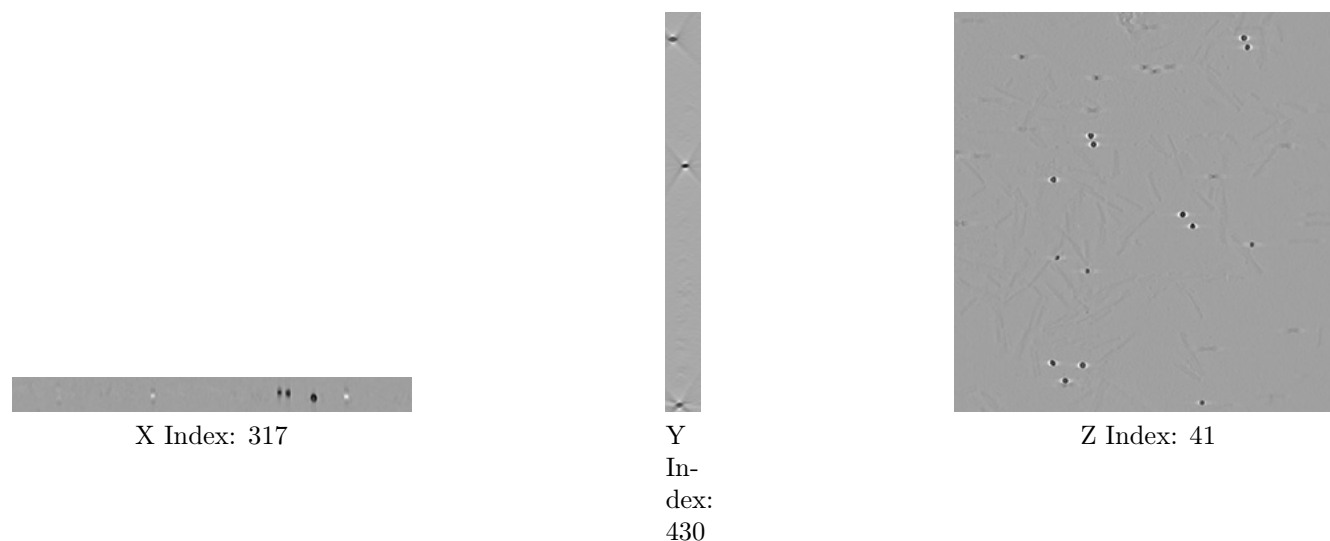
The images above show the tomogram projected in three orthogonal directions.

2.2 Central slices [i](#)



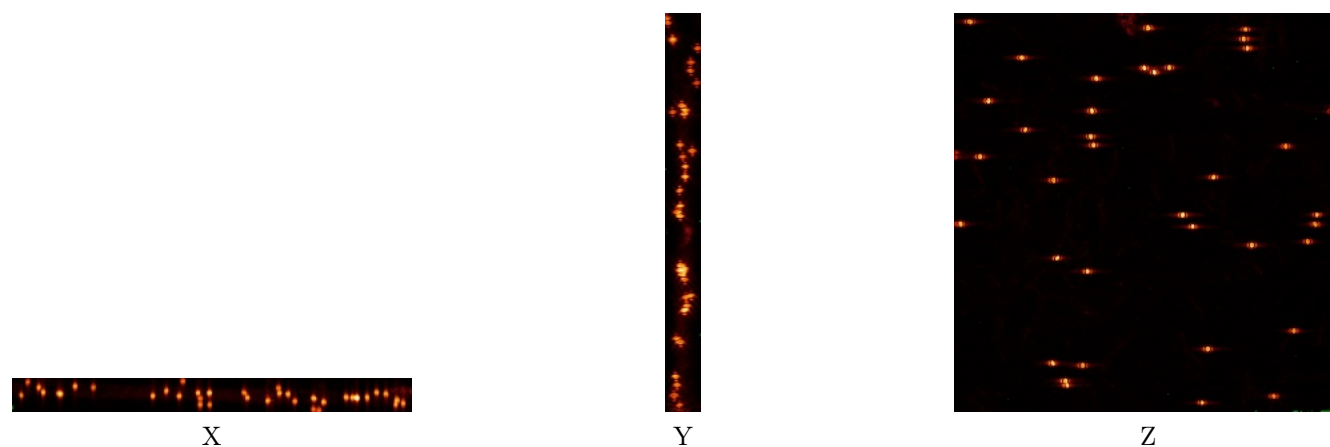
The images above show central slices of the tomogram in three orthogonal directions.

2.3 Largest variance slices [i](#)



The images above show the largest variance slices of the tomogram in three orthogonal directions.

2.4 Orthogonal standard-deviation projections (False-color) [i](#)



The images above show the tomogram projected in three orthogonal directions.

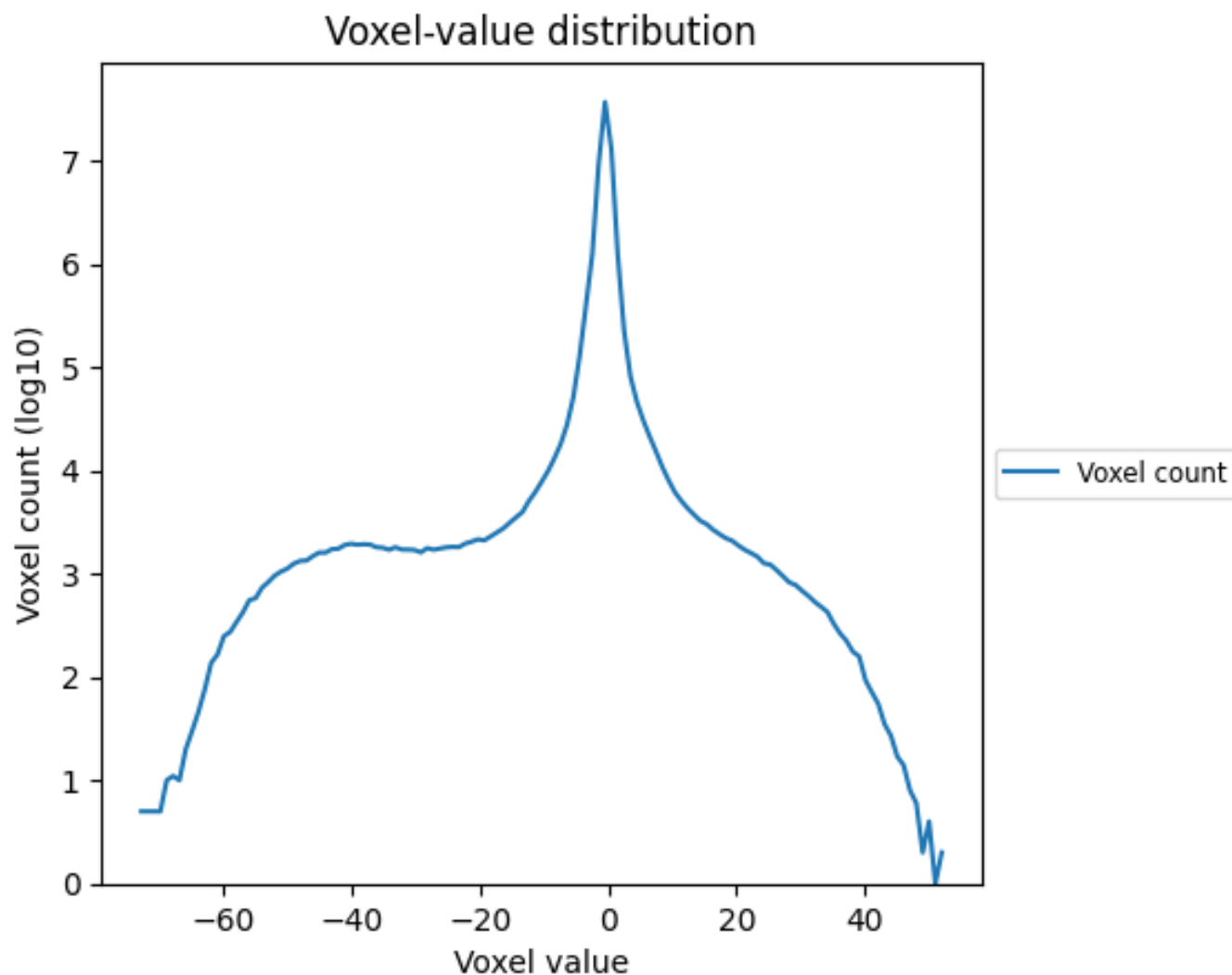
2.5 Mask visualisation [i](#)

This section was not generated. No masks/segmentation were deposited.

3 Tomogram analysis [i](#)

This section contains the results of statistical analysis of the tomogram.

3.1 Voxel-value distribution [i](#)



The voxel-value distribution is plotted in 128 intervals along the x-axis. The y-axis is logarithmic.